

**AL RAHA LOFTS TWO**

|

- 1B LOFT
- 2B LOFT
- 3B LOFT
- 3B LOFT +ROOF



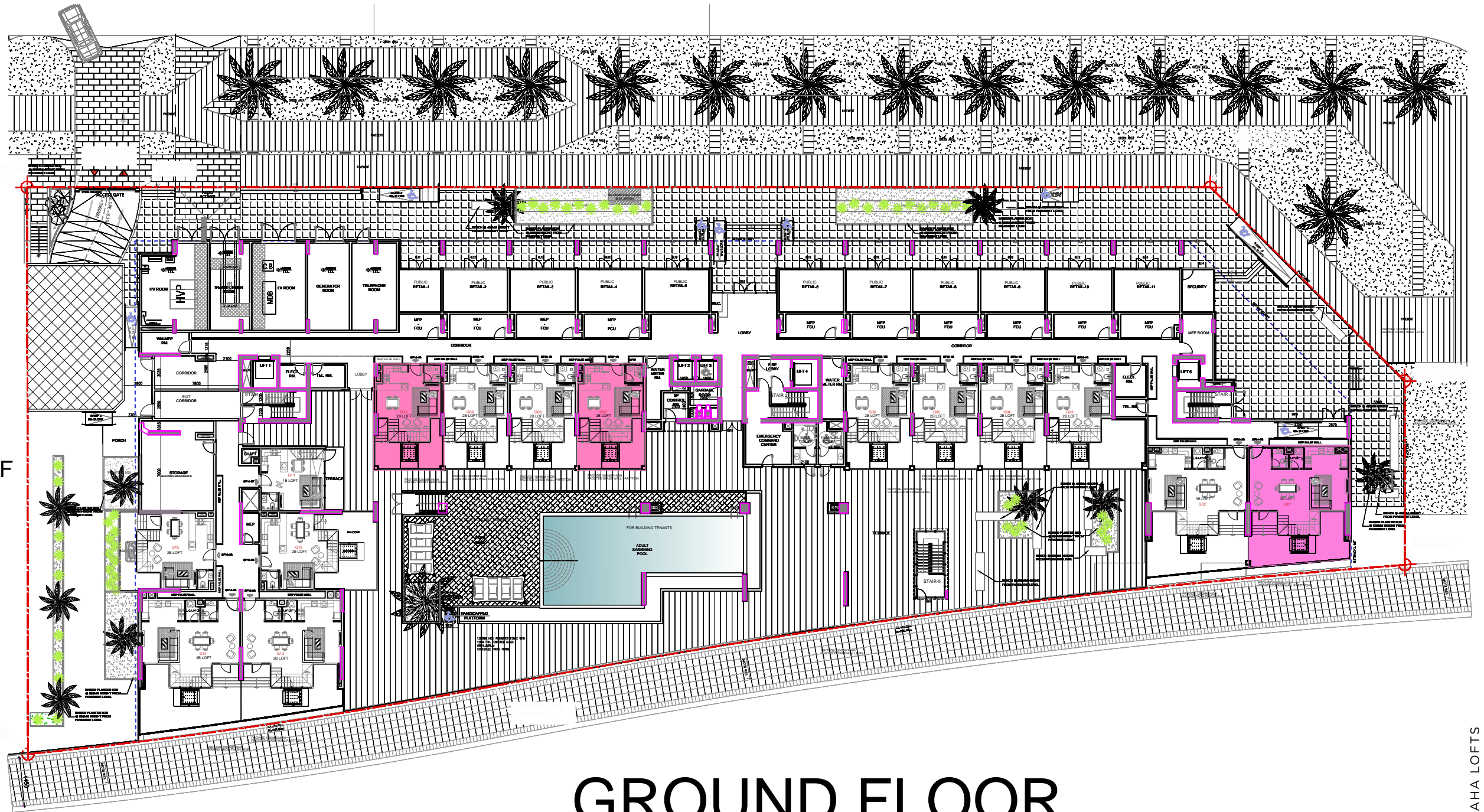
# 1ST BASEMENT FLOOR

- 1B LOFT
- 2B LOFT
- 3B LOFT
- 3B LOFT +ROOF



# 2ND BASEMENT FLOOR

- 1B LOFT
- 2B LOFT
- 3B LOFT
- 3B LOFT + ROOF



# GROUND FLOOR

- 1B LOFT
- 2B LOFT
- 3B LOFT
- 3B LOFT + ROOF



# FIRST FLOOR

- 1B LOFT
- 2B LOFT
- 3B LOFT
- 3B LOFT +ROOF



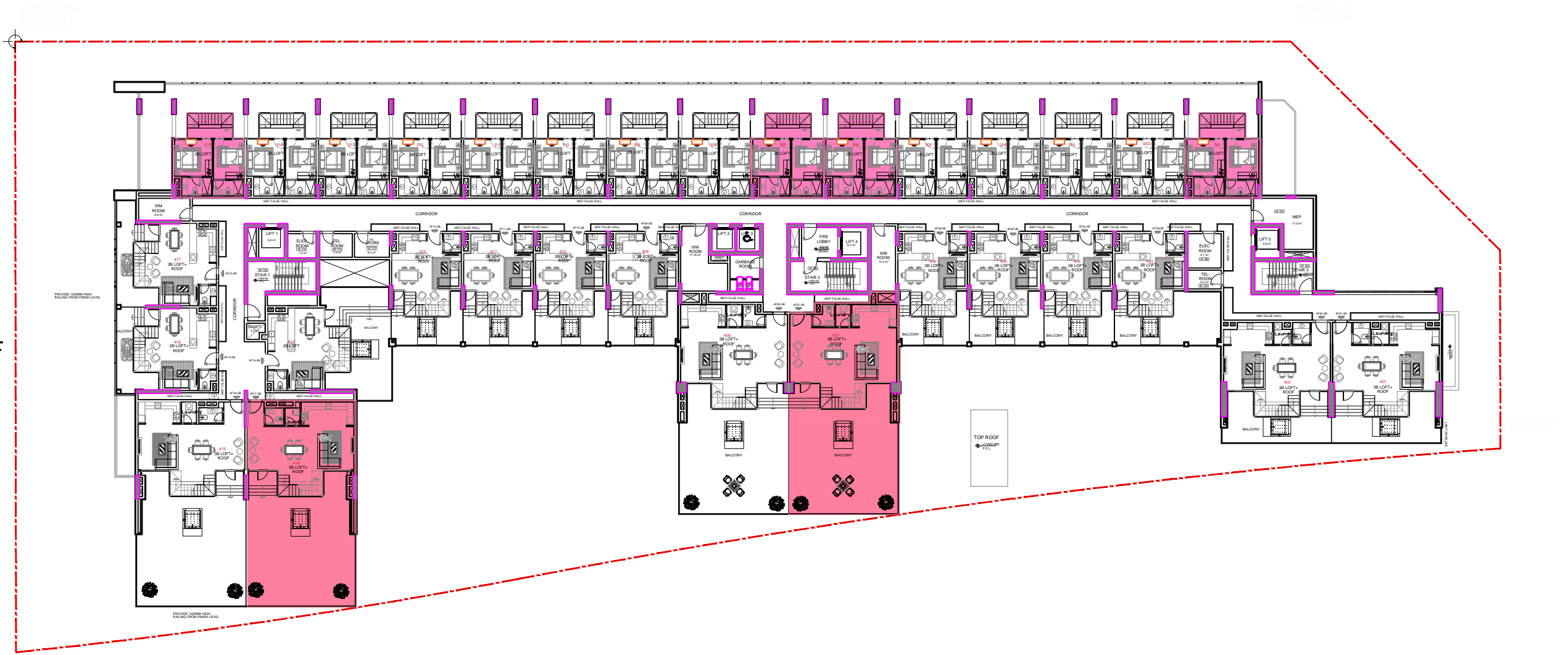
# SECOND FLOOR

- 1B LOFT
- 2B LOFT
- 3B LOFT
- 3B LOFT + ROOF



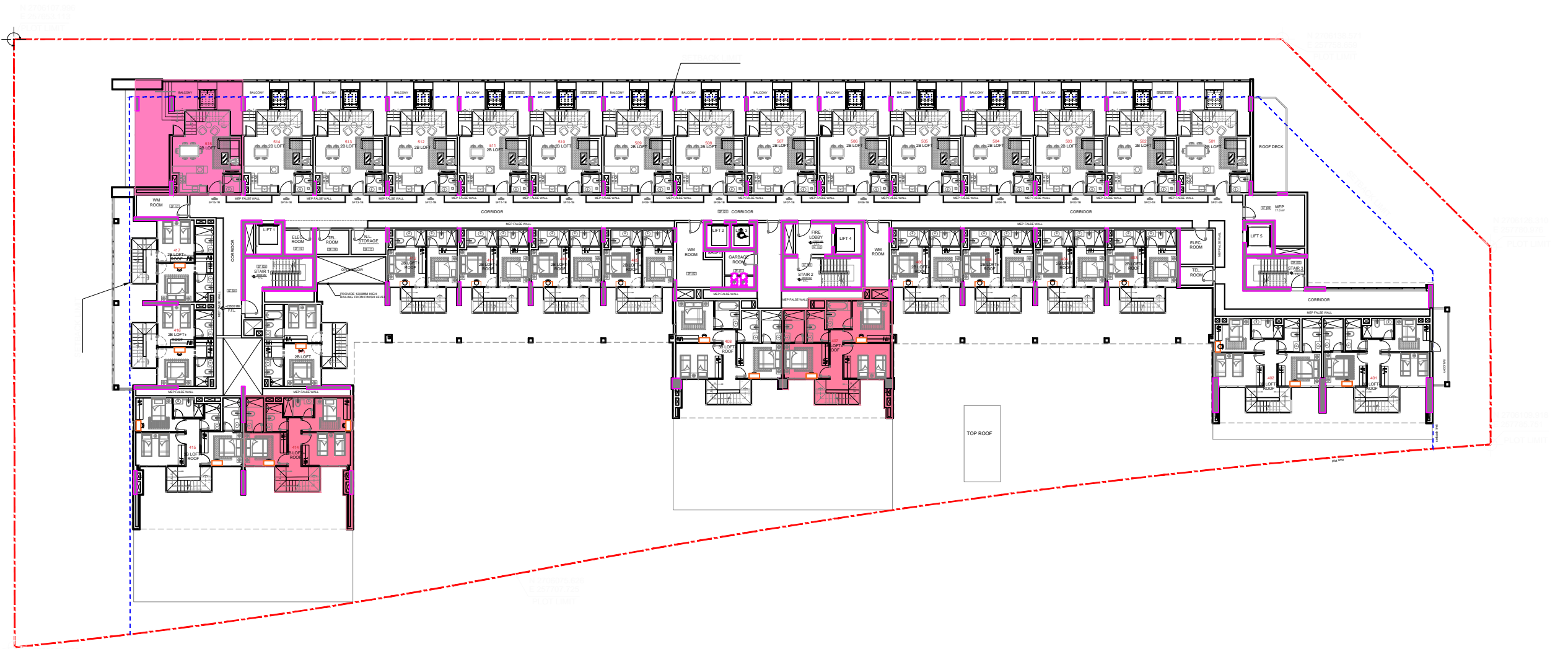
# THIRD FLOOR

- 1B LOFT
- 2B LOFT
- 3B LOFT
- 3B LOFT + ROOF



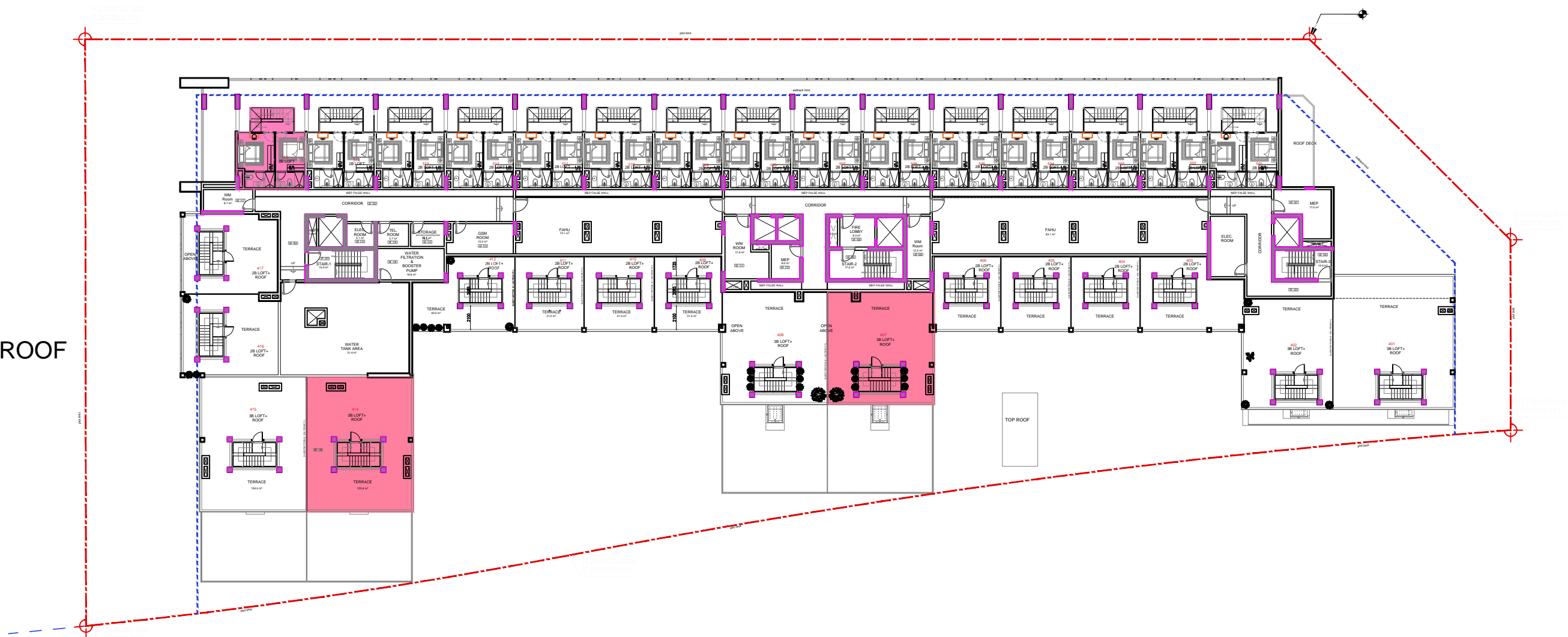
# FOURTH FLOOR

- 1B LOFT
- 2B LOFT
- 3B LOFT
- 3B LOFT +ROOF



# FIFTH FLOOR

- 1B LOFT
- 2B LOFT
- 3B LOFT
- 3B LOFT +ROOF



# SIXTH FLOOR

N 2700107.000  
E 207000.113  
PLOT LIMIT

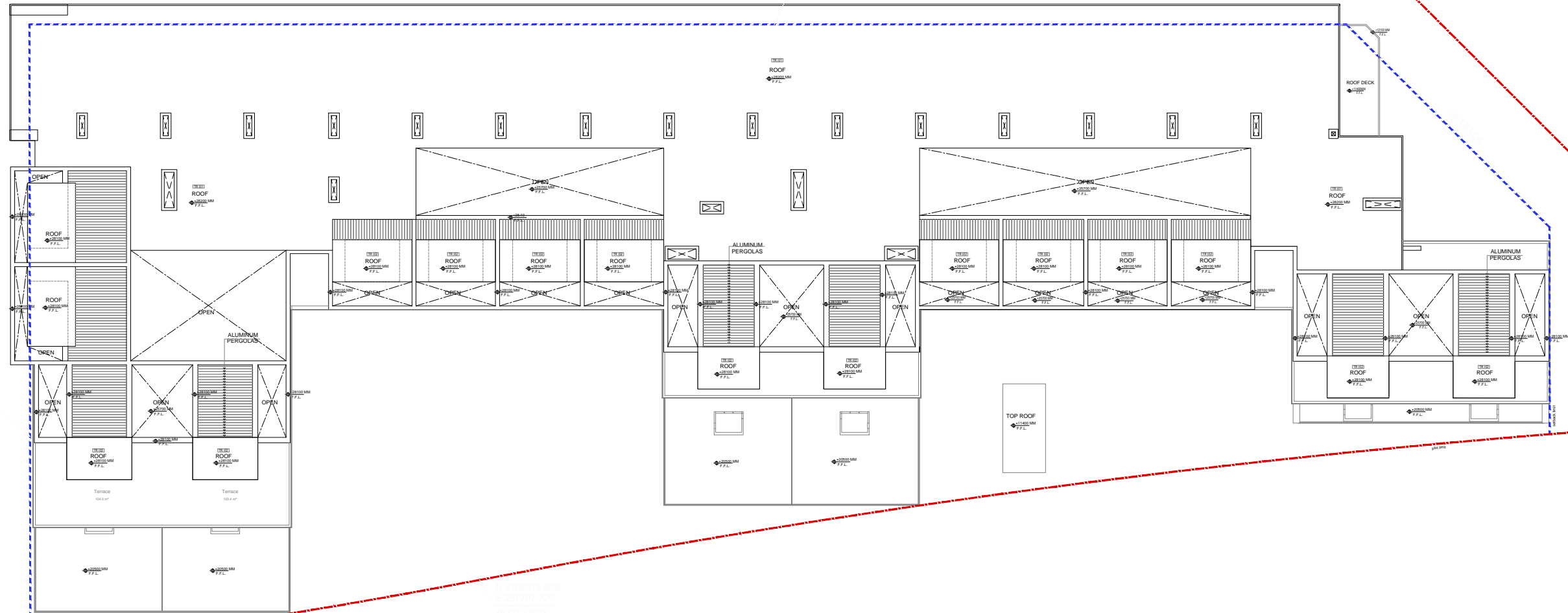
N 2700107.000  
E 207000.113  
PLOT LIMIT

N 2700107.000  
E 207000.113  
PLOT LIMIT

N 2700107.000  
E 207000.113  
PLOT LIMIT

N 2700107.000  
E 207000.113  
PLOT LIMIT

N 2700107.000  
E 207000.113  
PLOT LIMIT



# ROOF FLOOR

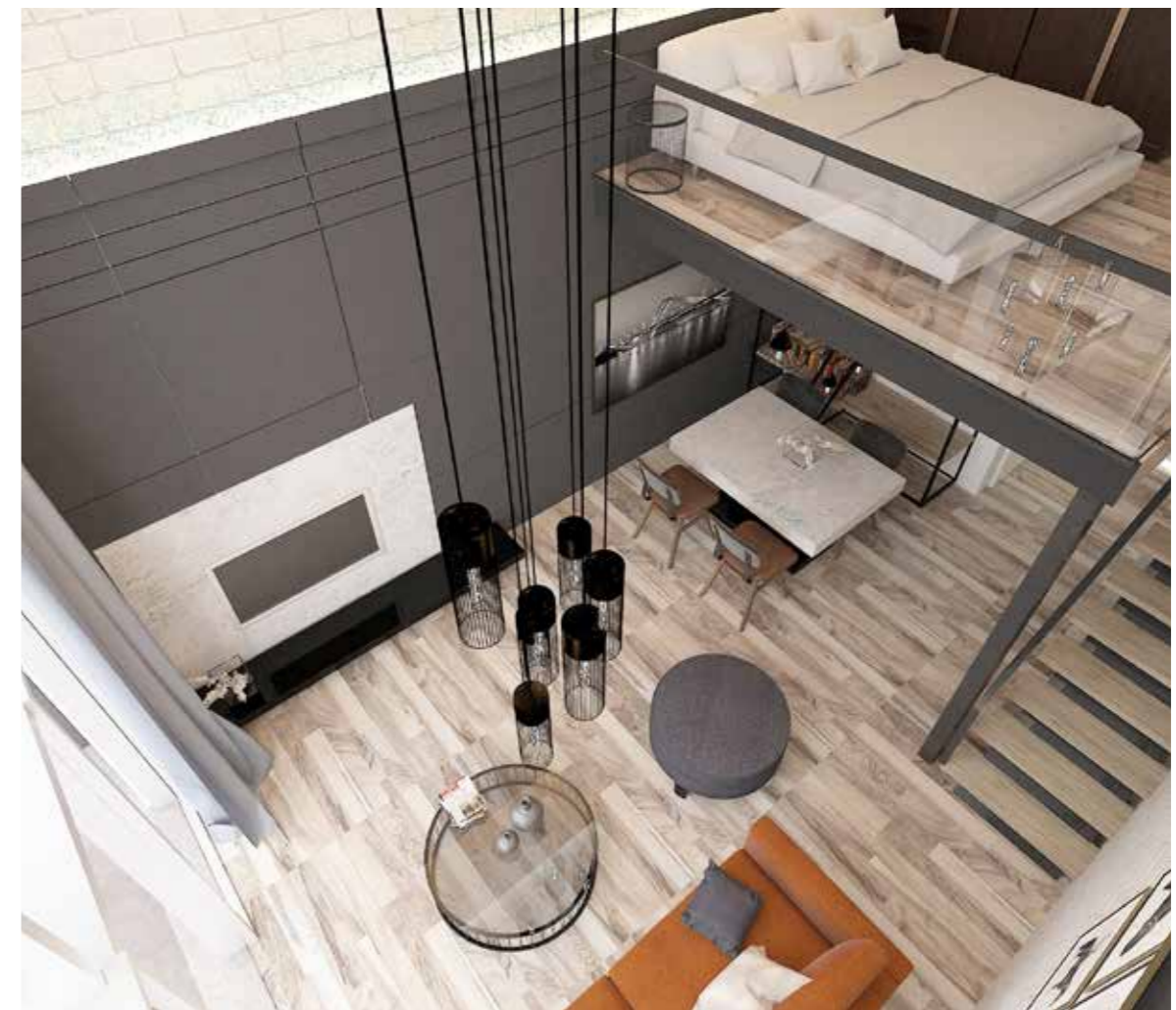


## RENDERINGS AND LAYOUTS

LOFT (LUXURY)



LOFT (NEW YORK STYLE)



**STUDIO**



DUPLEX TYPE C LARGE

