

Al Waha Residences at Expo City - Apartment

GROUND FLOOR



1-BEDROOM APARTMENT 2-BEDROOM APARTMENT LOFT RETAIL/FOOD & BEVERAGE

FIRST FLOOR



1-BEDROOM APARTMENT 2-BEDROOM APARTMENT LOFT

SECOND FLOOR



1-BEDROOM APARTMENT 2-BEDROOM APARTMENT

THIRD FLOOR



1-BEDROOM APARTMENT 2-BEDROOM APARTMENT

MOBILITY DISTRICT

There are 284 units on offer in the Mobility District across all floors.



AL WAHA

1-BEDROOM APARTMENT (TYPE 1)



1-BEDROOM APARTMENT TYPE 1

TOTAL AREA: 80.40 SQM / 865.42 SQFT

AREA RANGE: 72.40 SQM - 80.40 SQM
779.31 SQFT - 865.42 SQFT

DISCLAIMER: 1. All room dimensions are in metres to the nearest decimal place, measured to structural elements, and exclude wall finishes and construction tolerances. 2. All dimensions have been provided by our consultant architects. 3. Areas are exclusive of partition walls, risers and terraces. 4. All materials, dimensions, drawings, features and amenities are approximate at the time of printing. 5. Actual area may vary from stated area. 6. Drawings not to scale E&OE. 7. Unit plans may exist in mirrored versions. 8. The developer reserves the right to make revisions to the floor plans and any features, materials, dimensions, drawings and amenities mentioned on this plan and in the brochure without notice.



AL WAHA

09 - UNIT PLANS

2-BEDROOM APARTMENT
(TYPE1)



2-BEDROOM
APARTMENT
TYPE 1

TOTAL AREA:
116.99 SQM / 1,259.27 SQFT

AREA RANGE:
109.09 SQM - 116.99 SQM
1,174.23 SQFT - 1,259.27 SQFT



DISCLAIMER: 1. All room dimensions are in metres to the nearest decimal place, measured to structural elements, and exclude wall finishes and construction tolerances. 2. All dimensions have been provided by our consultant architects. 3. Areas are exclusive of partition walls, risers and terraces. 4. All materials, dimensions, drawings, features and amenities are approximate at the time of printing. 5. Actual area may vary from stated area. 6. Drawings not to scale E&OE. 7. Unit plans may exist in mirrored versions. 8. The developer reserves the right to make revisions to the floor plans and any features, materials, dimensions, drawings and amenities mentioned on this plan and in the brochure without notice.

AL WAHA

17 - UNIT PLANS

1-BEDROOM APARTMENT
(TYPE10)



1-BEDROOM
APARTMENT
TYPE 10

TOTAL AREA:
99.06 SQM / 1,066.27 SQFT

AREA RANGE:
99.06 SQM - 103.38 SQM
1,066.27 SQFT - 1,112.77 SQFT

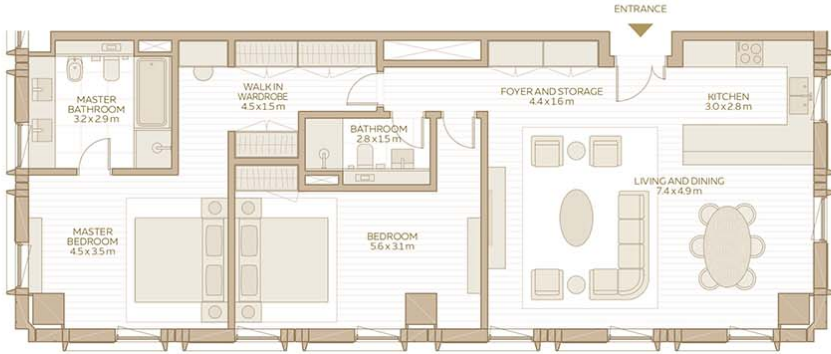


DISCLAIMER: 1. All room dimensions are in metres to the nearest decimal place, measured to structural elements, and exclude wall finishes and construction tolerances. 2. All dimensions have been provided by our consultant architects. 3. Areas are exclusive of partition walls, risers and terraces. 4. All materials, dimensions, drawings, features and amenities are approximate at the time of printing. 5. Actual area may vary from stated area. 6. Drawings not to scale E&OE. 7. Unit plans may exist in mirrored versions. 8. The developer reserves the right to make revisions to the floor plans and any features, materials, dimensions, drawings and amenities mentioned on this plan and in the brochure without notice.

AL WAHA

16 - UNIT PLANS

2-BEDROOM APARTMENT
(TYPE 10)



2-BEDROOM
APARTMENT
TYPE 10

TOTAL AREA:
118.91 SQM / 1,279.94 SQFT

AREA RANGE:
118.91 SQM - 128.67 SQM
1,279.94 SQFT - 1384.99 SQFT



DISCLAIMER: 1. All room dimensions are in metres to the nearest decimal place, measured to structural elements, and exclude wall finishes and construction tolerances. 2. All dimensions have been provided by our consultant architects. 3. Areas are exclusive of partition walls, risers and terraces. 4. All materials, dimensions, drawings, features and amenities are approximate at the time of printing. 5. Actual area may vary from stated area. 6. Drawings not to scale E&OE. 7. Unit plans may exist in mirrored versions. 8. The developer reserves the right to make revisions to the floor plans and any features, materials, dimensions, drawings and amenities mentioned on this plan and in the brochure without notice.

AL WAHA
25 - UNIT PLANS

2-BEDROOM APARTMENT
(TYPE 11)



2-BEDROOM
APARTMENT
TYPE 11

TOTAL AREA:
109.01 SQM / 1,173.37 SQFT

AREA RANGE:
109.01 SQM - 114.52 SQM
1,173.37 SQFT - 1,232.68 SQFT



DISCLAIMER: 1. All room dimensions are in metres to the nearest decimal place, measured to structural elements, and exclude wall finishes and construction tolerances. 2. All dimensions have been provided by our consultant architects. 3. Areas are exclusive of partition walls, risers and terraces. 4. All materials, dimensions, drawings, features and amenities are approximate at the time of printing. 5. Actual area may vary from stated area. 6. Drawings not to scale E&OE. 7. Unit plans may exist in mirrored versions. 8. The developer reserves the right to make revisions to the floor plans and any features, materials, dimensions, drawings and amenities mentioned on this plan and in the brochure without notice.

AL WAHA
26 - UNIT PLANS

2-BEDROOM APARTMENT
(TYPE 12)



2-BEDROOM APARTMENT
TYPE 12

TOTAL AREA:
128.17 SQM / 1,379.61 SQFT

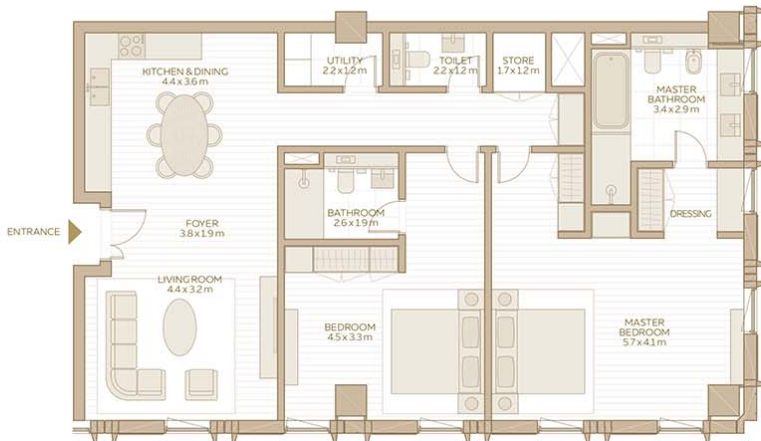
AREA RANGE:
128.17 SQM - 128.64 SQM
1,379.61 SQFT - 1,384.67 SQFT



DISCLAIMER: 1. All room dimensions are in metres to the nearest decimal place, measured to structural elements, and exclude wall finishes and construction tolerances. 2. All dimensions have been provided by our consultant architects. 3. Areas are exclusive of partition walls, risers and terraces. 4. All materials, dimensions, drawings, features and amenities are approximate at the time of printing. 5. Actual area may vary from stated area. 6. Drawings not to scale E&OE. 7. Unit plans may exist in mirrored versions. 8. The developer reserves the right to make revisions to the floor plans and any features, materials, dimensions, drawings and amenities mentioned on this plan and in the brochure without notice.

AL WAHA
27 - UNIT PLANS

2-BEDROOM APARTMENT
(TYPE 13)



2-BEDROOM APARTMENT
TYPE 13

TOTAL AREA:
133.86 SQM / 1,440.86 SQFT

AREA RANGE:
133.03 SQM - 133.86 SQM
1,431.92 SQFT - 1,440.86 SQFT



DISCLAIMER: 1. All room dimensions are in metres to the nearest decimal place, measured to structural elements, and exclude wall finishes and construction tolerances. 2. All dimensions have been provided by our consultant architects. 3. Areas are exclusive of partition walls, risers and terraces. 4. All materials, dimensions, drawings, features and amenities are approximate at the time of printing. 5. Actual area may vary from stated area. 6. Drawings not to scale E&OE. 7. Unit plans may exist in mirrored versions. 8. The developer reserves the right to make revisions to the floor plans and any features, materials, dimensions, drawings and amenities mentioned on this plan and in the brochure without notice.

AL WAHA
28 - UNIT PLANS

2-BEDROOM APARTMENT
(TYPE 14)



2-BEDROOM APARTMENT
TYPE 14

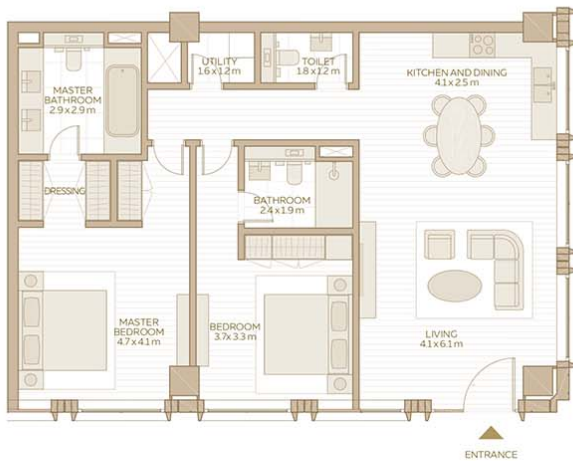
TOTAL AREA:
113.22 SQM / 1,218.69 SQFT

AREA RANGE:
113.22 SQM - 113.43 SQM
1,218.69 SQFT - 1,220.95 SQFT

DISCLAIMER: 1. All room dimensions are in metres to the nearest decimal place, measured to structural elements, and exclude wall finishes and construction tolerances. 2. All dimensions have been provided by our consultant architects. 3. Areas are exclusive of partition walls, risers and terraces. 4. All materials, dimensions, drawings, features and amenities are approximate at the time of printing. 5. Actual area may vary from stated area. 6. Drawings not to scale E&OE. 7. Unit plans may exist in mirrored versions. 8. The developer reserves the right to make revisions to the floor plans and any features, materials, dimensions, drawings and amenities mentioned on this plan and in the brochure without notice.

AL WAHIA
29 - UNIT PLANS

2-BEDROOM APARTMENT
(TYPE 2)



2-BEDROOM APARTMENT
TYPE 2

TOTAL AREA:
118.03 SQM / 1,270.46 SQFT

AREA RANGE:
111.27 SQM - 118.03 SQM
1,197.70 SQFT - 1,270.46 SQFT

DISCLAIMER: 1. All room dimensions are in metres to the nearest decimal place, measured to structural elements, and exclude wall finishes and construction tolerances. 2. All dimensions have been provided by our consultant architects. 3. Areas are exclusive of partition walls, risers and terraces. 4. All materials, dimensions, drawings, features and amenities are approximate at the time of printing. 5. Actual area may vary from stated area. 6. Drawings not to scale E&OE. 7. Unit plans may exist in mirrored versions. 8. The developer reserves the right to make revisions to the floor plans and any features, materials, dimensions, drawings and amenities mentioned on this plan and in the brochure without notice.

AL WAHIA
18 - UNIT PLANS

1-BEDROOM APARTMENT
(TYPE 3)



1-BEDROOM
APARTMENT
TYPE 3

TOTAL AREA:
68.71 SQM / 739.59 SQFT

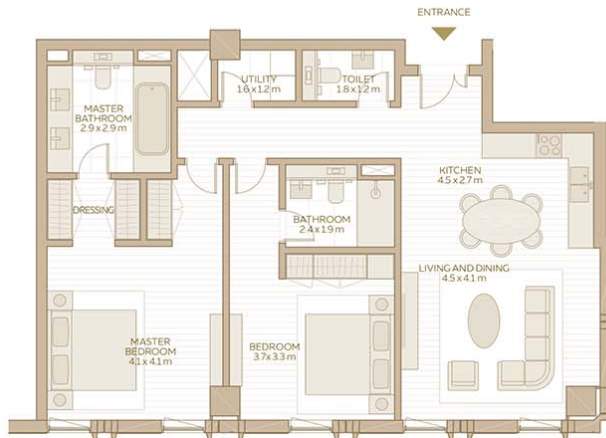
AREA RANGE:
68.71 SQM - 72.41 SQM
739.59 SQFT - 779.41 SQFT

DISCLAIMER: 1. All room dimensions are in metres to the nearest decimal place, measured to structural elements, and exclude wall finishes and construction tolerances. 2. All dimensions have been provided by our consultant architects. 3. Areas are exclusive of partition walls, risers and terraces. 4. All materials, dimensions, drawings, features and amenities are approximate at the time of printing. 5. Actual area may vary from stated area. 6. Drawings not to scale E&OE. 7. Unit plans may exist in mirrored versions. 8. The developer reserves the right to make revisions to the floor plans and any features, materials, dimensions, drawings and amenities mentioned on this plan and in the brochure without notice.

AL WAHA

10 - UNIT PLANS

2-BEDROOM APARTMENT
(TYPE 3)



2-BEDROOM
APARTMENT
TYPE 3

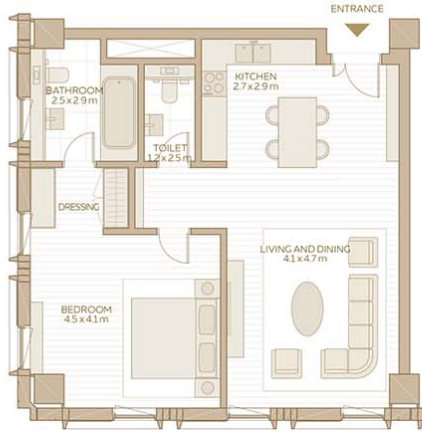
TOTAL AREA:
108.33 SQM / 1,166.05 SQFT

DISCLAIMER: 1. All room dimensions are in metres to the nearest decimal place, measured to structural elements, and exclude wall finishes and construction tolerances. 2. All dimensions have been provided by our consultant architects. 3. Areas are exclusive of partition walls, risers and terraces. 4. All materials, dimensions, drawings, features and amenities are approximate at the time of printing. 5. Actual area may vary from stated area. 6. Drawings not to scale E&OE. 7. Unit plans may exist in mirrored versions. 8. The developer reserves the right to make revisions to the floor plans and any features, materials, dimensions, drawings and amenities mentioned on this plan and in the brochure without notice.

AL WAHA

19 - UNIT PLANS

1-BEDROOM APARTMENT
(TYPE 4)



1-BEDROOM
APARTMENT
TYPE 4

TOTAL AREA:
78.60 SQM / 846.04 SQFT

AREA RANGE:
78.60 SQM - 87.53 SQM
846.04 SQFT - 942.17 SQFT

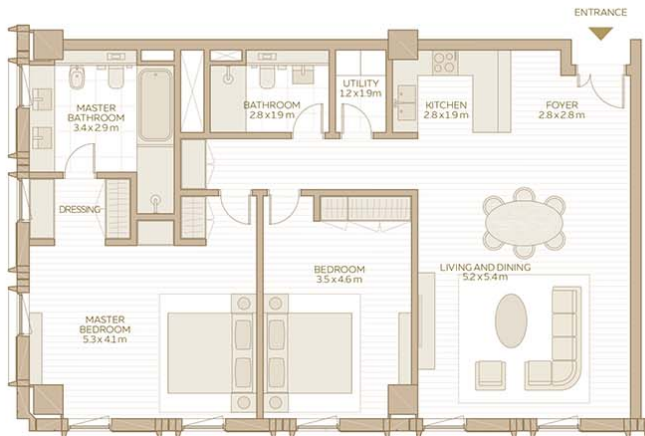


DISCLAIMER: 1. All room dimensions are in metres to the nearest decimal place, measured to structural elements, and exclude wall finishes and construction tolerances. 2. All dimensions have been provided by our consultant architects. 3. Areas are exclusive of partition walls, risers and terraces. 4. All materials, dimensions, drawings, features and amenities are approximate at the time of printing. 5. Actual area may vary from stated area. 6. Drawings not to scale E&OE. 7. Unit plans may exist in mirrored versions. 8. The developer reserves the right to make revisions to the floor plans and any features, materials, dimensions, drawings and amenities mentioned on this plan and in the brochure without notice.

AL WAHIA

11 - UNIT PLANS

2-BEDROOM APARTMENT
(TYPE 4)



2-BEDROOM
APARTMENT
TYPE 4

TOTAL AREA:
127.70 SQM / 1,374.55 SQFT

AREA RANGE:
127.70 SQM - 127.72 SQM
1,374.55 SQFT - 1,374.77 SQFT



DISCLAIMER: 1. All room dimensions are in metres to the nearest decimal place, measured to structural elements, and exclude wall finishes and construction tolerances. 2. All dimensions have been provided by our consultant architects. 3. Areas are exclusive of partition walls, risers and terraces. 4. All materials, dimensions, drawings, features and amenities are approximate at the time of printing. 5. Actual area may vary from stated area. 6. Drawings not to scale E&OE. 7. Unit plans may exist in mirrored versions. 8. The developer reserves the right to make revisions to the floor plans and any features, materials, dimensions, drawings and amenities mentioned on this plan and in the brochure without notice.

AL WAHIA

20 - UNIT PLANS

1-BEDROOM APARTMENT
(TYPE 5)



1-BEDROOM
APARTMENT
TYPE 5

TOTAL AREA:
107.85 SQM / 1,160.89 SQFT

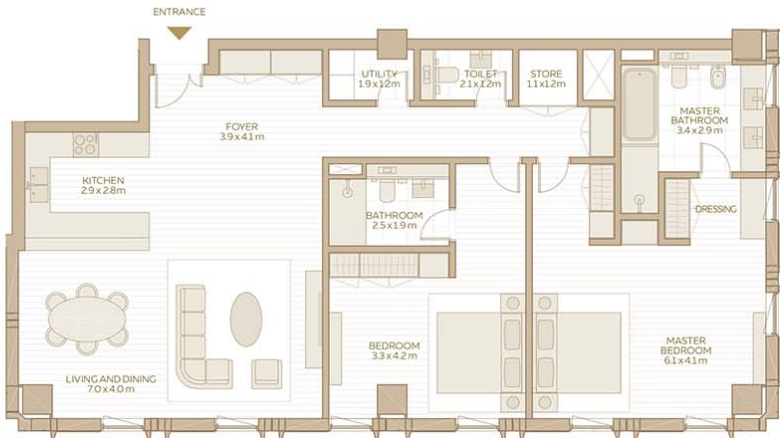
AREA RANGE:
103.22 SQM - 107.85 SQM
1,111.05 SQFT - 1,160.89 SQFT

DISCLAIMER: 1. All room dimensions are in metres to the nearest decimal place, measured to structural elements, and exclude wall finishes and construction tolerances. 2. All dimensions have been provided by our consultant architects. 3. Areas are exclusive of partition walls, risers and terraces. 4. All materials, dimensions, drawings, features and amenities are approximate at the time of printing. 5. Actual area may vary from stated area. 6. Drawings not to scale E&OE. 7. Unit plans may exist in mirrored versions. 8. The developer reserves the right to make revisions to the floor plans and any features, materials, dimensions, drawings and amenities mentioned on this plan and in the brochure without notice.

AL WAHA

12 - UNIT PLANS

2-BEDROOM APARTMENT
(TYPE 5)



2-BEDROOM
APARTMENT
TYPE 5

TOTAL AREA:
153.30 SQM / 1,650.11 SQFT

DISCLAIMER: 1. All room dimensions are in metres to the nearest decimal place, measured to structural elements, and exclude wall finishes and construction tolerances. 2. All dimensions have been provided by our consultant architects. 3. Areas are exclusive of partition walls, risers and terraces. 4. All materials, dimensions, drawings, features and amenities are approximate at the time of printing. 5. Actual area may vary from stated area. 6. Drawings not to scale E&OE. 7. Unit plans may exist in mirrored versions. 8. The developer reserves the right to make revisions to the floor plans and any features, materials, dimensions, drawings and amenities mentioned on this plan and in the brochure without notice.

AL WAHA

21 - UNIT PLANS

1-BEDROOM APARTMENT
(TYPE 6)



1-BEDROOM
APARTMENT
TYPE 6

AREA RANGE:
103.19 SQM / 1,110.73 SQFT



DISCLAIMER: 1. All room dimensions are in metres to the nearest decimal place, measured to structural elements, and exclude wall finishes and construction tolerances. 2. All dimensions have been provided by our consultant architects. 3. Areas are exclusive of partition walls, risers and terraces. 4. All materials, dimensions, drawings, features and amenities are approximate at the time of printing. 5. Actual area may vary from stated area. 6. Drawings not to scale E&OE. 7. Unit plans may exist in mirrored versions. 8. The developer reserves the right to make revisions to the floor plans and any features, materials, dimensions, drawings and amenities mentioned on this plan and in the brochure without notice.

AL WAHA
13 - UNIT PLANS

1-BEDROOM APARTMENT
(TYPE 7)



1-BEDROOM
APARTMENT
TYPE 7

TOTAL AREA:
86.57 SQM / 931.83 SQFT

AREA RANGE:
86.21 SQM - 86.59 SQM
927.96 SQFT - 932.05 SQFT



DISCLAIMER: 1. All room dimensions are in metres to the nearest decimal place, measured to structural elements, and exclude wall finishes and construction tolerances. 2. All dimensions have been provided by our consultant architects. 3. Areas are exclusive of partition walls, risers and terraces. 4. All materials, dimensions, drawings, features and amenities are approximate at the time of printing. 5. Actual area may vary from stated area. 6. Drawings not to scale E&OE. 7. Unit plans may exist in mirrored versions. 8. The developer reserves the right to make revisions to the floor plans and any features, materials, dimensions, drawings and amenities mentioned on this plan and in the brochure without notice.

AL WAHA
14 - UNIT PLANS

2-BEDROOM APARTMENT
(TYPE 7)



2-BEDROOM
APARTMENT
TYPE 7

TOTAL AREA:
146.19 SQM / 1,573.58 SQFT

AREA RANGE:
146.19 SQM - 147.90 SQM
1,573.58 SQFT - 1,591.98 SQFT



EXPO
CITY
DUBAI

DISCLAIMER 1. All room dimensions are in metres to the nearest decimal place, measured to structural elements, and exclude wall finishes and construction tolerances. 2. All dimensions have been provided by our consultant architects. 3. Areas are exclusive of partition walls, risers and terraces. 4. All materials, dimensions, drawings, features and amenities are approximate at the time of printing. 5. Actual area may vary from stated area. 6. Drawings not to scale E&OE. 7. Unit plans may exist in mirrored versions. 8. The developer reserves the right to make revisions to the floor plans and any features, materials, dimensions, drawings and amenities mentioned on this plan and in the brochure without notice.

AL WAHIA

22 - UNIT PLANS

1-BEDROOM APARTMENT
(TYPE 8)



1-BEDROOM
APARTMENT
TYPE 8

TOTAL AREA:
88.24 SQM / 949.81 SQFT

AREA RANGE:
88.24 SQM - 91.65 SQM
949.81 SQFT - 986.51 SQFT



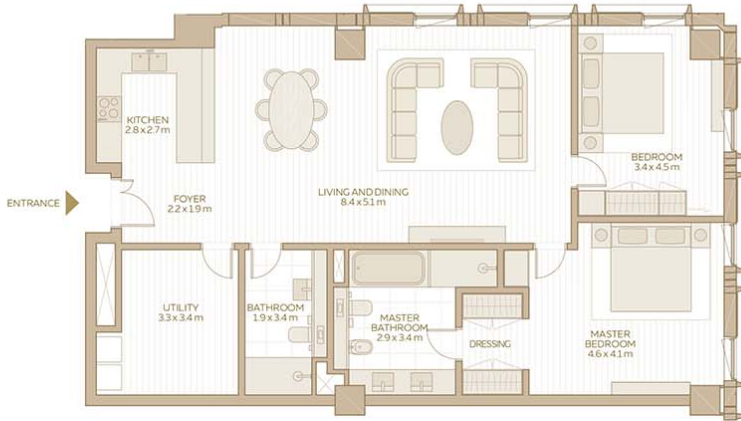
EXPO
CITY
DUBAI

DISCLAIMER 1. All room dimensions are in metres to the nearest decimal place, measured to structural elements, and exclude wall finishes and construction tolerances. 2. All dimensions have been provided by our consultant architects. 3. Areas are exclusive of partition walls, risers and terraces. 4. All materials, dimensions, drawings, features and amenities are approximate at the time of printing. 5. Actual area may vary from stated area. 6. Drawings not to scale E&OE. 7. Unit plans may exist in mirrored versions. 8. The developer reserves the right to make revisions to the floor plans and any features, materials, dimensions, drawings and amenities mentioned on this plan and in the brochure without notice.

AL WAHIA

15 - UNIT PLANS

2-BEDROOM APARTMENT
(TYPE 8)



2-BEDROOM APARTMENT
TYPE 8

TOTAL AREA:
131.90 SQM / 1,419.76 SQFT

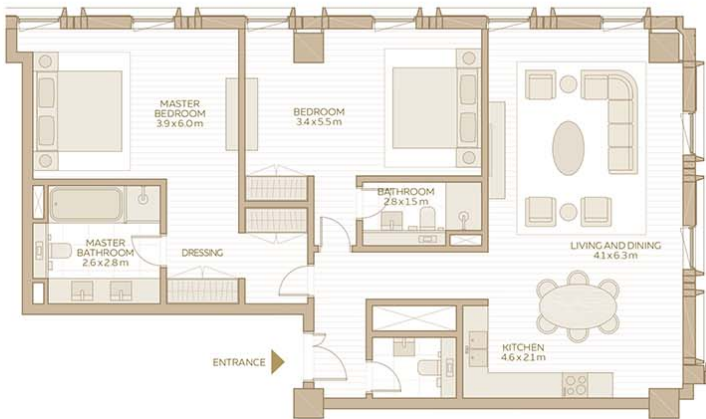
AREA RANGE:
126.40 SQM - 131.90 SQM
1,360.56 SQFT - 1,419.76 SQFT



DISCLAIMER: 1. All room dimensions are in metres to the nearest decimal place, measured to structural elements, and exclude wall finishes and construction tolerances. 2. All dimensions have been provided by our consultant architects. 3. Areas are exclusive of partition walls, risers and terraces. 4. All materials, dimensions, drawings, features and amenities are approximate at the time of printing. 5. Actual area may vary from stated area. 6. Drawings not to scale E&OE. 7. Unit plans may exist in mirrored versions. 8. The developer reserves the right to make revisions to the floor plans and any features, materials, dimensions, drawings and amenities mentioned on this plan and in the brochure without notice.

AL WAHA
23 - UNIT PLANS

2-BEDROOM APARTMENT
(TYPE 9)



2-BEDROOM APARTMENT
TYPE 9

TOTAL AREA:
124.23 SQM / 1,337.20 SQFT

AREA RANGE:
122.44 SQM - 125.17 SQM
1,317.93 SQFT - 1,347.32 SQFT



DISCLAIMER: 1. All room dimensions are in metres to the nearest decimal place, measured to structural elements, and exclude wall finishes and construction tolerances. 2. All dimensions have been provided by our consultant architects. 3. Areas are exclusive of partition walls, risers and terraces. 4. All materials, dimensions, drawings, features and amenities are approximate at the time of printing. 5. Actual area may vary from stated area. 6. Drawings not to scale E&OE. 7. Unit plans may exist in mirrored versions. 8. The developer reserves the right to make revisions to the floor plans and any features, materials, dimensions, drawings and amenities mentioned on this plan and in the brochure without notice.

AL WAHA
24 - UNIT PLANS