

# Arista Wadi Villas - Villa



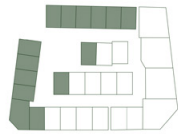
**WADI**  
VILLAS  
BY ARISTA PROPERTIES  
DISTRICT 11 MEYDAN

*4 Bedroom Villa*  
**FIRST FLOOR**

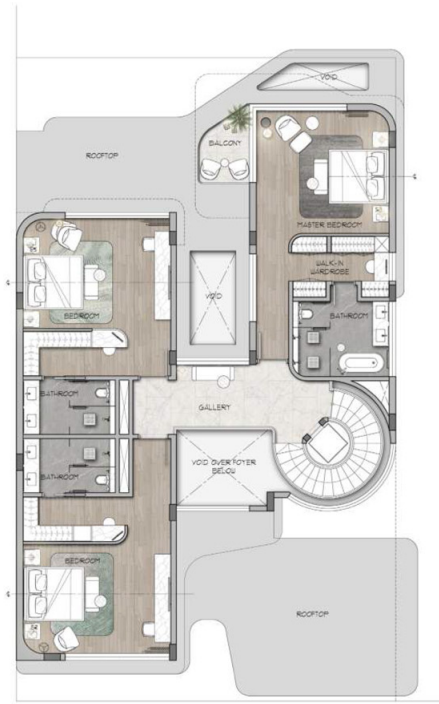
TOTAL AREA  
**2,095 SQ. FT**  
APPROX

TOTAL BUILT UP AREA  
**6,545 SQ. FT**  
APPROX

DISCLAIMER: All measure, dimensions, coordinates and drawings given as the Floor Plans in the literature are approximate and provided only for the purpose of marketing, illustration, information and general guidance as such drawings are not to scale. All the rooms, sizes, locations, orientations, dimensions, fixtures, fittings, finishes and special items (including materials for placement, size of rooms, windows, doors, balcony, furniture's, built-in wardrobe, etc.) provided in the floor plans may vary as the same have been taken from concept designs prior the actual development's construction and therefore their accuracy in relation to actual construction cannot be confirmed. Hence, we make no guarantee, warranty or representation as to the accuracy and completeness of the floor plan information as changes may be made during the development process, without notice. Always refer to latest IBC design available in the sales office for the most accurate representation of all construction details.



KEY PLAN



ARISTA  
PROPERTIES



**WADI**  
VILLAS  
BY ARISTA PROPERTIES  
DISTRICT 11 MEYDAN

*4 Bedroom Villa*  
**GROUND FLOOR**

TOTAL AREA  
**3,645 SQ. FT**  
APPROX

TOTAL BUILT UP AREA  
**6,545 SQ. FT**  
APPROX

DISCLAIMER: All measure, dimensions, coordinates and drawings given as the Floor Plans in the literature are approximate and provided only for the purpose of marketing, illustration, information and general guidance as such drawings are not to scale. All the rooms, sizes, locations, orientations, dimensions, fixtures, fittings, finishes and special items (including materials for placement, size of rooms, windows, doors, balcony, furniture's, built-in wardrobe, etc.) provided in the floor plans may vary as the same have been taken from concept designs prior the actual development's construction and therefore their accuracy in relation to actual construction cannot be confirmed. Hence, we make no guarantee, warranty or representation as to the accuracy and completeness of the floor plan information as changes may be made during the development process, without notice. Always refer to latest IBC design available in the sales office for the most accurate representation of all construction details.



KEY PLAN



ARISTA  
PROPERTIES



**WADI**  
VILLAS

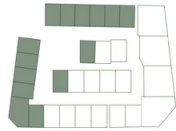
BY ARISTA PROPERTIES  
DISTRICT 11 MEYDAN

*4 Bedroom Villa*  
**SECOND FLOOR**

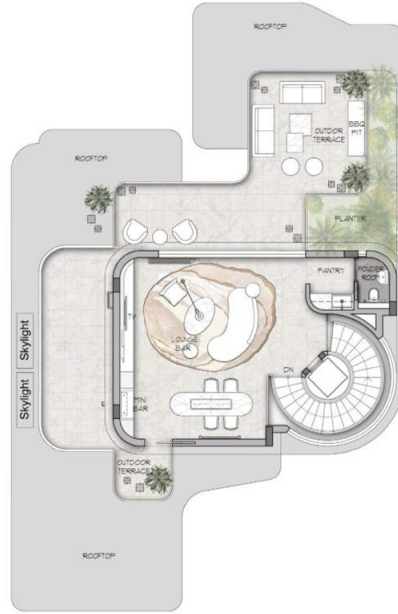
TOTAL AREA  
**805 SQ. FT**  
APPROX

TOTAL BUILT UP AREA  
**6,545 SQ. FT**  
APPROX

DISCLAIMER: All measure, elements, dimensions, coordinates and drawings, given as the Floor Plans in the literature are approximate and provided only for the purpose of marketing, illustration, information and general guidance as such drawings are not to scale. All the rooms, sizes, locations, orientations, dimensions, fittings, finishes and special areas (including materials for placement, size of rooms, windows, doors, balcony, furniture, built-in wardrobe, etc.) provided in the floor plans may vary as the same have been taken from concept designs prior the actual development's construction and therefore their accuracy in relation to actual construction cannot be confirmed. Hence, we make no guarantee, warranty or representation as to the accuracy and completeness of the floor plan information as changes may be made during the development process, without notice. Always refer to latest IFC design available in the sales office for the most accurate representation of all construction details.



KEY PLAN



ARISTA  
PROPERTIES



**WADI**  
VILLAS

BY ARISTA PROPERTIES  
DISTRICT 11 MEYDAN

*5 Bedroom Villa*  
**FIRST FLOOR**

TOTAL AREA  
**2,280 SQ. FT**  
APPROX

TOTAL BUILT UP AREA  
**8,020 SQ. FT**  
APPROX

DISCLAIMER: All measure, elements, dimensions, coordinates and drawings, given as the Floor Plans in the literature are approximate and provided only for the purpose of marketing, illustration, information and general guidance as such drawings are not to scale. All the rooms, sizes, locations, orientations, dimensions, fittings, finishes and special areas (including materials for placement, size of rooms, windows, doors, balcony, furniture, built-in wardrobe, etc.) provided in the floor plans may vary as the same have been taken from concept designs prior the actual development's construction and therefore their accuracy in relation to actual construction cannot be confirmed. Hence, we make no guarantee, warranty or representation as to the accuracy and completeness of the floor plan information as changes may be made during the development process, without notice. Always refer to latest IFC design available in the sales office for the most accurate representation of all construction details.



KEY PLAN



ARISTA  
PROPERTIES



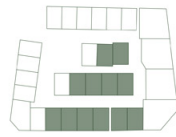
**WADI**  
VILLAS  
BY ARISTA PROPERTIES  
DISTRICT 14 MEYDAN

*5 Bedroom Villa*  
**GROUND FLOOR**

TOTAL AREA  
**4,055 SQ.FT**  
APPROX

TOTAL BUILT UP AREA  
**8,020 SQ.FT**  
APPROX

DISCLAIMER: All measure, dimensions, coordinates and drawings given in the Floor Plans in this literature are approximate and provided only for the purpose of marketing, illustration, information and general guidance as such drawings are not to scale. All the rooms, sizes, locations, orientations, dimensions, fittings, finishes and special areas (including materials, for placement, size of rooms, windows, doors, balcony, furniture, inbuilt wardrobe, etc.) provided in the floor plans may vary as the same have been taken from concept designs prior the actual development's construction and therefore their accuracy in relation to actual construction cannot be confirmed. Hence, we make no guarantee, warranty or representation as to the accuracy and completeness of the floor plan information as changes may be made during the development process, without notice. Always refer to latest I.R. design available in the sales office for the most accurate representation of all construction details.



KEY PLAN



**WADI**  
VILLAS  
BY ARISTA PROPERTIES  
DISTRICT 14 MEYDAN

*5 Bedroom Villa*  
**SECOND FLOOR**

TOTAL AREA  
**1,685 SQ.FT**  
APPROX

TOTAL BUILT UP AREA  
**8,020 SQ.FT**  
APPROX

DISCLAIMER: All measure, dimensions, coordinates and drawings given in the Floor Plans in this literature are approximate and provided only for the purpose of marketing, illustration, information and general guidance as such drawings are not to scale. All the rooms, sizes, locations, orientations, dimensions, fittings, finishes and special areas (including materials, for placement, size of rooms, windows, doors, balcony, furniture, inbuilt wardrobe, etc.) provided in the floor plans may vary as the same have been taken from concept designs prior the actual development's construction and therefore their accuracy in relation to actual construction cannot be confirmed. Hence, we make no guarantee, warranty or representation as to the accuracy and completeness of the floor plan information as changes may be made during the development process, without notice. Always refer to latest I.R. design available in the sales office for the most accurate representation of all construction details.



KEY PLAN

