

# Aurea at Rashid Yachts and Marina - Apartment

## AUREA

RASHID YACHTS & MARINA

### 2 Bedroom Unit Type A2

LEVEL 01

UNIT - 01

Suit Area	101.95 sqm	1097.38 sqft
Balcony Area	30.57 sqm	329.05 sqft
Total Area	132.52 sqm	1426.43 sqft

Key Plan



Key Section



FOOR PLAN 1. All dimensions are in imperial and metric, and measured from finish to finish excluding construction tolerances. 2. All materials, dimensions, and drawings are approximate only. 3. Information is subject to change without notice, at developer's absolute discretion. 4. Actual area may vary from the stated area. 5. Drawings not to scale. 6. All images used are for illustrative purposes only and do not represent the actual site, features, specifications, fittings, and furnishings. 7. The developer reserves the right to make revisions / alterations, at it's absolute discretion, without any liability whatsoever.

EMAAR

# AUREA

RASHID YACHTS & MARINA

## 2 Bedroom Unit Type A3

LEVELS 09 - 13

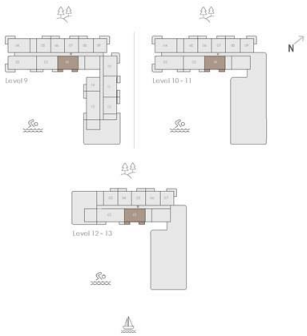
UNIT - 01

Suit Area	102.33 sqm	1101.47 sqft
Balcony Area	13.40 sqm	144.24 sqft
Total Area	115.73 sqm	1245.71 sqft



Key Plan

Key Section



1. All dimensions are in Imperial and metric, and measured from finish to finish excluding construction tolerances. 2. All materials, dimensions, and drawings are approximate only. 3. Information is subject to change without notice, at developer's absolute discretion. 4. Actual area may vary from the stated area. 5. Drawings not to scale. 6. All images used are for illustrative purposes only and do not represent the actual size, features, specifications, fittings, and furnishings. 7. The developer reserves the right to make revisions / alterations, at its absolute discretion, without any liability whatsoever.

EMAAR

# AUREA

RASHID YACHTS & MARINA

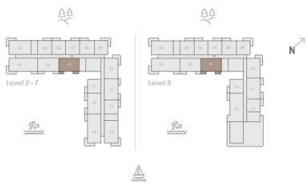
## 2 Bedroom Unit Type A3

LEVELS 02 - 08

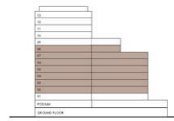
UNIT - 01

Suit Area	101.96 sqm	1097.49 sqft
Balcony Area	13.40 sqm	144.24 sqft
Total Area	115.36 sqm	1241.73 sqft

Key Plan



Key Section



1. All dimensions are in imperial and metric, and measured from finish to finish excluding construction tolerances. 2. All materials, dimensions, and drawings are approximate only. 3. Information is subject to change without notice, at developer's absolute discretion. 4. Actual area may vary from the stated area. 5. Drawings not to scale. 6. All images used are for illustrative purposes only and do not represent the actual size, features, specifications, fittings, and furnishings. 7. The developer reserves the right to make revisions / alterations, at its absolute discretion, without any liability whatsoever.

EMAAR

# AUREA

RASHID YACHTS & MARINA

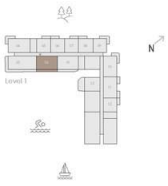
## 2 Bedroom Unit Type A1

LEVEL 01

UNIT - 02

Suit Area	100.45 sqm	1081.23 sqft
Balcony Area	31.29 sqm	336.80 sqft
Total Area	131.74 sqm	1418.03 sqft

Key Plan



Key Section



1. All dimensions are in imperial and metric, and measured from finish to finish excluding construction tolerances. 2. All materials, dimensions, and drawings are approximate only. 3. Information is subject to change without notice, at developer's absolute discretion. 4. Actual area may vary from the stated area. 5. Drawings not to scale. 6. All images used are for illustrative purposes only and do not represent the actual size, features, specifications, fittings, and furnishings. 7. The developer reserves the right to make revisions / alterations, at it's absolute discretion, without any liability whatsoever.

# AUREA

RASHID YACHTS & MARINA

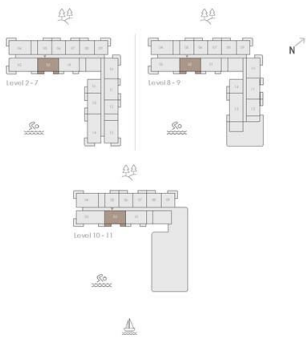
## 2 Bedroom Unit Type A4

LEVELS 02 - 11

UNIT - 02

Suit Area	100.46 sqm	1081.34 sqft
Balcony Area	14.35 sqm	154.46 sqft
Total Area	114.81sqm	1235.80 sqft

Key Plan



Key Section



KEY PLAN 1. All dimensions are in imperial and metric, and measured from finish to finish excluding construction tolerances. 2. All materials, dimensions, and drawings are approximate only. 3. Information is subject to change without notice, at developer's absolute discretion. 4. Actual area may vary from the stated area. 5. Drawings not to scale. 6. All images used are for illustrative purposes only and do not represent the actual size, features, specifications, fittings, and furnishings. 7. The developer reserves the right to make revisions / alterations, at it's absolute discretion, without any liability whatsoever.

# AUREA

RASHID YACHTS & MARINA

## 3 Bedroom Unit Type A6

LEVEL 12

UNIT - 02

Suit Area	134.73 sqm.	1450.22 sqft
Balcony Area	95.91 sqm.	1032.37 sqft
Total Area	230.64 sqm.	2482.59 sqft



Key Plan



Key Section



1. All dimensions are in imperial and metric, and measured from finish to finish excluding construction tolerances. 2. All materials, dimensions, and drawings are approximate only. 3. Information is subject to change without notice at developer's absolute discretion. 4. Actual area may vary from the stated area. 5. Drawings not to scale. 6. All images used are for illustrative purposes only and do not represent the actual size, features, specifications, fittings, and furnishings. 7. The developer reserves the right to make revisions / alterations, at its absolute discretion, without any liability whatsoever.

EMAAR

# AUREA

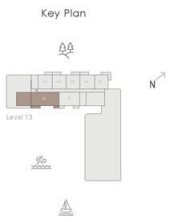
RASHID YACHTS & MARINA

## 3 Bedroom Unit Type A7

LEVEL 13

UNIT - 02

Suit Area	134.73 sqm.	1450.22 sqft
Balcony Area	60.23 sqm.	648.31 sqft
Total Area	194.96 sqm.	2098.53 sqft



1. All dimensions are in imperial and metric, and measured from finish to finish excluding construction tolerances. 2. All materials, dimensions, and drawings are approximate only. 3. Information is subject to change without notice, at developer's absolute discretion. 4. Actual area may vary from the stated area. 5. Drawings not to scale. 6. All images used are for illustrative purposes only and do not represent the actual size, features, specifications, fittings, and furnishings. 7. The developer reserves the right to make revisions / alterations, at its absolute discretion, without any liability whatsoever.



# AUREA

RASHID YACHTS & MARINA

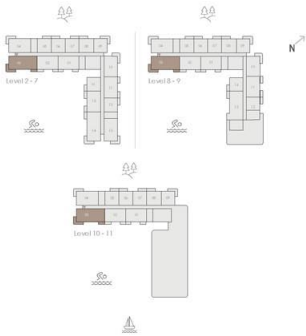
## 3 Bedroom Unit Type A3

LEVELS 02 - 11

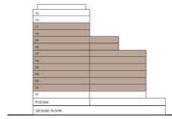
UNIT - 03

Suit Area	134.71 sqm.	1450.01 sqft
Balcony Area	23.07 sqm.	248.32 sqft
Total Area	157.78 sqm.	1698.33 sqft

Key Plan



Key Section



FLOOR PLAN 1. All dimensions are in imperial and metric, and measured from finish to finish excluding construction tolerances. 2. All materials, dimensions, and drawings are approximate only. 3. Information is subject to change without notice, at developer's absolute discretion. 4. Actual area may vary from the stated area. 5. Drawings not to scale. 6. All images used are for illustrative purposes only and do not represent the actual size, features, specifications, fittings, and furnishings. 7. The developer reserves the right to make revisions / alterations, at its absolute discretion, without any liability whatsoever.

EMAAR

# AUREA

RASHID YACHTS & MARINA

## 1 Bedroom Unit Type C1

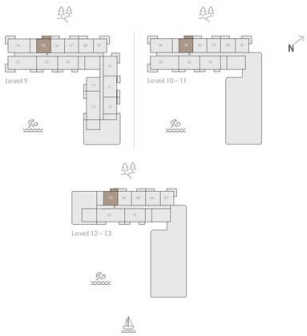
LEVELS 09 - 11      UNITS - 05  
LEVELS 12 - 13      UNITS - 03

Suit Area	68.65 sqm	738.94 sqft
Balcony Area	07.56 sqm	81.38 sqft
Total Area	76.21 sqm	820.32 sqft



Key Plan

Key Section



1. All dimensions are in imperial and metric, and measured from finish to finish excluding construction tolerances. 2. All materials, dimensions, and drawings are approximate only. 3. Information is subject to change without notice, at developer's absolute discretion. 4. Actual area may vary from the stated area. 5. Drawings not to scale. 6. All images used are for illustrative purposes only and do not represent the actual size, features, specifications, fittings, and furnishings. 7. The developer reserves the right to make revisions / alterations, at it's absolute discretion, without any liability whatsoever.

EMAAR

# AUREA

RASHID YACHTS & MARINA

## 2 Bedroom Unit Type B1

LEVELS 01 - 08

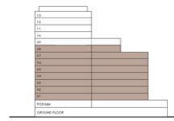
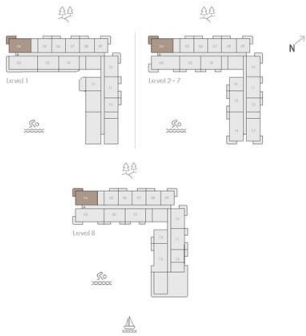
UNITS - 04

Suit Area	103.58 sqm	1114.93 sqft
Balcony Area	15.92 sqm	171.36 sqft
Total Area	119.50 sqm	1286.29 sqft



Key Plan

Key Section



KEY PLAN 1. All dimensions are in imperial and metric, and measured from finish to finish excluding construction tolerances. 2. All materials, dimensions, and drawings are approximate only. 3. Information is subject to change without notice, at developer's absolute discretion. 4. Actual area may vary from the stated area. 5. Drawings not to scale. 6. All images used are for illustrative purposes only and do not represent the actual size, features, specifications, fittings, and furnishings. 7. The developer reserves the right to make revisions / alterations, at its absolute discretion, without any liability whatsoever.

EMAAR



# AUREA

RASHID YACHTS & MARINA

## 1 Bedroom Unit Type A2

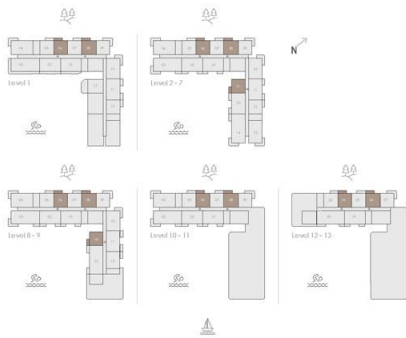
LEVELS 01	UNITS - 06 & 08
LEVELS 02 - 07	UNITS - 06, 08 & 16
LEVELS 08 - 09	UNITS - 06, 08 & 14
LEVELS 10 - 11	UNITS - 06 & 08
LEVELS 12 - 13	UNITS - 04 & 06

Suit Area	66.66 sqm	717.52 sqft
Balcony Area	07.56 sqm	81.38 sqft
Total Area	74.22 sqm	798.90 sqft



Key Plan

Key Section



1. All dimensions are in imperial and metric, and measured from finish to finish excluding construction tolerances. 2. All materials, dimensions, and drawings are approximate only. 3. Information is subject to change without notice, at developer's absolute discretion. 4. Actual area may vary from the stated area. 5. Drawings not to scale. 6. All images used are for illustrative purposes only and do not represent the actual size, features, specifications, fittings, and furnishings. 7. The developer reserves the right to make revisions / alterations, at its absolute discretion, without any liability whatsoever.

EMAAR

# AUREA

RASHID YACHTS & MARINA

## 1 Bedroom Unit Type C1

LEVELS 01 - 08

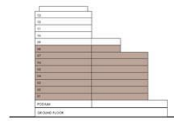
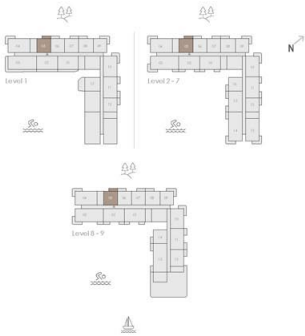
UNITS - 05

Suit Area	68.25 sqm	734.64 sqft
Balcony Area	07.56 sqm	81.38 sqft
Total Area	75.81 sqm	816.01 sqft



Key Plan

Key Section



1. All dimensions are in imperial and metric, and measured from finish to finish excluding construction tolerances. 2. All materials, dimensions, and drawings are approximate only. 3. Information is subject to change without notice, at developer's absolute discretion. 4. Actual area may vary from the stated area. 5. Drawings not to scale. 6. All images used are for illustrative purposes only and do not represent the actual size, features, specifications, fittings, and furnishings. 7. The developer reserves the right to make revisions / alterations, at its absolute discretion, without any liability whatsoever.

EMAAR

# AUREA

RASHID YACHTS & MARINA

## 1 Bedroom Unit Type A1

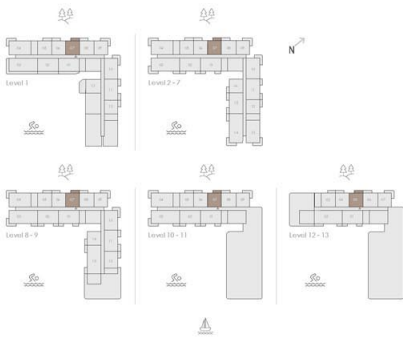
LEVELS 01 - 11      UNITS - 07  
LEVELS 12 - 13      UNITS - 05

Suit Area	66.66 sqm	717.52 sqft
Balcony Area	07.56 sqm	81.38 sqft
Total Area	74.22 sqm	798.90 sqft



Key Plan

Key Section



1. All dimensions are in imperial and metric, and measured from finish to finish excluding construction tolerances. 2. All materials, dimensions, and drawings are approximate only. 3. Information is subject to change without notice, at developer's absolute discretion. 4. Actual area may vary from the stated area. 5. Drawings not to scale. 6. All images used are for illustrative purposes only and do not represent the actual size, features, specifications, fittings, and furnishings. 7. The developer reserves the right to make revisions / alterations, at its absolute discretion, without any liability whatsoever.

EMAAR

# AUREA

RASHID YACHTS & MARINA

## 1 Bedroom Unit Type B1

LEVELS 01 - 11  
LEVELS 12 - 13

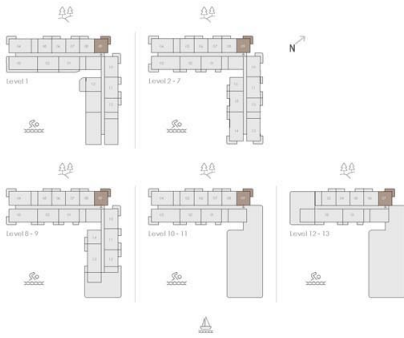
UNITS - 09  
UNITS - 07

Suit Area	66.98 sqm	720.97 sqft
Balcony Area	15.96 sqm	171.79 sqft
Total Area	82.94 sqm	892.76 sqft



Key Plan

Key Section



1. All dimensions are in imperial and metric, and measured from finish to finish excluding construction tolerances. 2. All materials, dimensions, and drawings are approximate only. 3. Information is subject to change without notice, at developer's absolute discretion. 4. Actual area may vary from the stated area. 5. Drawings not to scale. 6. All images used are for illustrative purposes only and do not represent the actual size, features, specifications, fittings, and furnishings. 7. The developer reserves the right to make revisions / alterations, at its absolute discretion, without any liability whatsoever.

EMAAR

# AUREA

RASHID YACHTS & MARINA

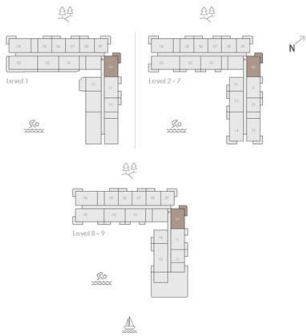
## 2 Bedroom Unit Type B1

LEVELS 01 - 09

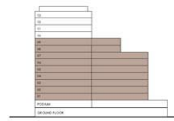
UNITS - 10

Suit Area	101.99 sqm.	1097.81 sqft
Balcony Area	15.91 sqm.	171.25 sqft
Total Area	117.90 sqm.	1269.06 sqft

Key Plan



Key Section



1. All dimensions are in imperial and metric, and measured from finish to finish excluding construction tolerances. 2. All materials, dimensions, and drawings are approximate only. 3. Information is subject to change without notice, at developer's absolute discretion. 4. Actual area may vary from the stated area. 5. Drawings not to scale. 6. All images used are for illustrative purposes only and do not represent the actual size, features, specifications, fittings, and furnishings. 7. The developer reserves the right to make revisions / alterations, at its absolute discretion, without any liability whatsoever.

EMAAR

# AUREA

RASHID YACHTS & MARINA

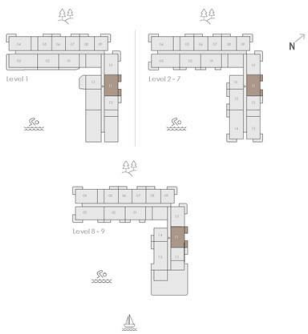
## 2 Bedroom Unit Type C1

LEVELS 01 - 09

UNITS - 11

Suit Area	100.45 sqm.	1081.23 sqft
Balcony Area	13.72 sqm.	147.68 sqft
Total Area	114.17 sqm.	1228.91 sqft

Key Plan



Key Section



KEY PLAN 1. All dimensions are in imperial and metric, and measured from finish to finish excluding construction tolerances. 2. All materials, dimensions, and drawings are approximate only. 3. Information is subject to change without notice, at developer's absolute discretion. 4. Actual area may vary from the stated area. 5. Drawings not to scale. 6. All images used are for illustrative purposes only and do not represent the actual size, features, specifications, fittings, and furnishings. 7. The developer reserves the right to make revisions / alterations, at its absolute discretion, without any liability whatsoever.

EMAAR

# AUREA

RASHID YACHTS & MARINA

## 1 Bedroom Unit Type C2

LEVELS 01 - 08

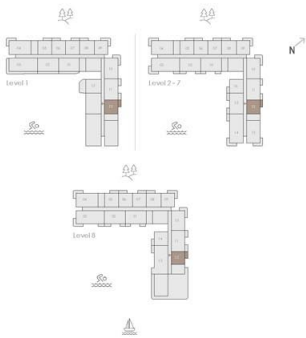
UNIT - 12

Suit Area	68.26 sqm	734.74 sqft
Balcony Area	07.56 sqm	81.38 sqft
Total Area	75.82 sqm	816.12 sqft



Key Plan

Key Section



KEY PLAN 1. All dimensions are in imperial and metric, and measured from finish to finish excluding construction tolerances. 2. All materials, dimensions, and drawings are approximate only. 3. Information is subject to change without notice, at developer's absolute discretion. 4. Actual area may vary from the stated area. 5. Drawings not to scale. 6. All images used are for illustrative purposes only and do not represent the actual size, features, specifications, fittings, and furnishings. 7. The developer reserves the right to make revisions / alterations, at it's absolute discretion, without any liability whatsoever.

EMAAR

# AUREA

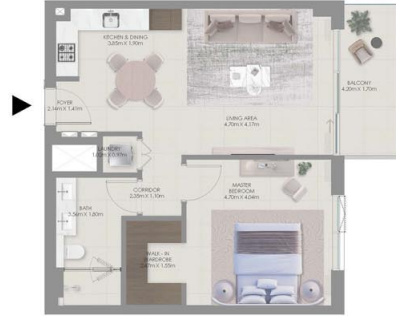
RASHID YACHTS & MARINA

## 1 Bedroom Unit Type C2

LEVEL 09

UNIT - 12

Suit Area	68.66 sqm	739.05 sqft
Balcony Area	07.56 sqm	81.38 sqft
Total Area	76.22 sqm	820.43 sqft



1. All dimensions are in imperial and metric, and measured from finish to finish excluding construction tolerances. 2. All materials, dimensions, and drawings are approximate only. 3. Information is subject to change without notice, at developer's absolute discretion. 4. Actual area may vary from the stated area. 5. Drawings not to scale. 6. All images used are for illustrative purposes only and do not represent the actual size, features, specifications, fittings, and furnishings. 7. The developer reserves the right to make revisions / alterations, at its absolute discretion, without any liability whatsoever.

EMAAR

# AUREA

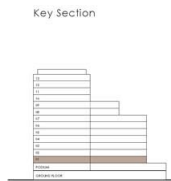
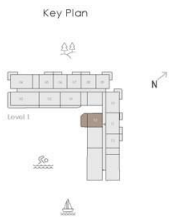
RASHID YACHTS & MARINA

## 1 Bedroom Unit Type A3

LEVEL 01

UNITS - 13

Suit Area	66.85 sqm	719.57 sqft
Balcony Area	24.94 sqm	268.45 sqft
Total Area	91.79 sqm	988.02 sqft



COOR PLAN 1. All dimensions are in imperial and metric, and measured from finish to finish excluding construction tolerances. 2. All materials, dimensions, and drawings are approximate only. 3. Information is subject to change without notice, at developer's absolute discretion. 4. Actual area may vary from the stated area. 5. Drawings not to scale. 6. All images used are for illustrative purposes only and do not represent the actual size, features, specifications, fittings, and furnishings. 7. The developer reserves the right to make revisions / alterations, at it's absolute discretion, without any liability whatsoever.

EMAAR

# AUREA

RASHID YACHTS & MARINA

## 3 Bedroom Unit Type A4

LEVEL 08

UNIT - 13

Suit Area	134.73 sqm.	1450.22 sqft
Balcony Area	96.02 sqm.	1033.55 sqft
Total Area	230.75 sqm.	2483.77 sqft

Key Plan



Key Section



FLOOR PLAN 1. All dimensions are in imperial and metric, and measured from finish to finish excluding construction tolerances. 2. All materials, dimensions, and drawings are approximate only. 3. Information is subject to change without notice, at developer's absolute discretion. 4. Actual area may vary from the stated area. 5. Drawings not to scale. 6. All images used are for illustrative purposes only and do not represent the actual size, features, specifications, fittings, and furnishings. 7. The developer reserves the right to make revisions / alterations, at its absolute discretion, without any liability whatsoever.

EMAAR

# AUREA

RASHID YACHTS & MARINA

## 3 Bedroom Unit Type A5

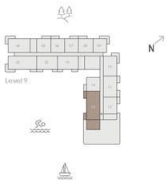
LEVEL 09

UNIT - 13

Suit Area	134.73 sqm.	1450.22 sqft
Balcony Area	73.34 sqm.	789.43 sqft
Total Area	208.07 sqm.	2239.65 sqft



Key Plan



Key Section



1. All dimensions are in imperial and metric, and measured from finish to finish excluding construction tolerances. 2. All materials, dimensions, and drawings are approximate only. 3. Information is subject to change without notice, at developer's absolute discretion. 4. Actual area may vary from the stated area. 5. Drawings not to scale. 6. All images used are for illustrative purposes only and do not represent the actual size, features, specifications, fittings, and furnishings. 7. The developer reserves the right to make revisions / alterations, at its absolute discretion, without any liability whatsoever.

EMAAR

# AUREA

RASHID YACHTS & MARINA

## 2 Bedroom Unit Type B2

LEVELS 02 - 07

UNIT - 13

Suit Area	103.58 sqm.	1114.93 sqft
Balcony Area	16.05 sqm.	172.76 sqft
Total Area	119.63 sqm.	1287.69 sqft



Key Plan



Key Section



1. All dimensions are in imperial and metric, and measured from finish to finish excluding construction tolerances. 2. All materials, dimensions, and drawings are approximate only. 3. Information is subject to change without notice, at developer's absolute discretion. 4. Actual area may vary from the stated area. 5. Drawings not to scale. 6. All images used are for illustrative purposes only and do not represent the actual size, features, specifications, fittings, and furnishings. 7. The developer reserves the right to make revisions / alterations, at its absolute discretion, without any liability whatsoever.

EMAAR

# AUREA

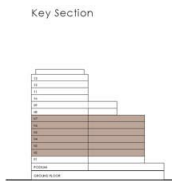
RASHID YACHTS & MARINA

## 3 Bedroom Unit Type A2

LEVELS 02 - 07

UNIT - 14

Suit Area	134.71 sqm.	1450.01 sqft
Balcony Area	23.07 sqm.	248.32 sqft
Total Area	157.78 sqm.	1698.33 sqft



1. All dimensions are in imperial and metric, and measured from finish to finish excluding construction tolerances. 2. All materials, dimensions, and drawings are approximate only. 3. Information is subject to change without notice, at developer's absolute discretion. 4. Actual area may vary from the stated area. 5. Drawings not to scale. 6. All images used are for illustrative purposes only and do not represent the actual size, features, specifications, fittings, and furnishings. 7. The developer reserves the right to make revisions / alterations, at its absolute discretion, without any liability whatsoever.

# AUREA

RASHID YACHTS & MARINA

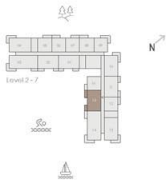
## 2 Bedroom Unit Type C1

LEVELS 02 - 07

UNITS - 15

Suit Area	100.46 sqm.	1081.34 sqft
Balcony Area	14.35 sqm.	154.46 sqft
Total Area	114.81 sqm.	1235.80 sqft

Key Plan



Key Section

