

# DOWNTOWN DUBAI

---

BLVD HEIGHTS  
EXECUTIVE RESIDENCES

FLOOR PLANS

EMAAR

# DOWNTOWN DUBAI

## BLVD HEIGHTS

EXECUTIVE RESIDENCES

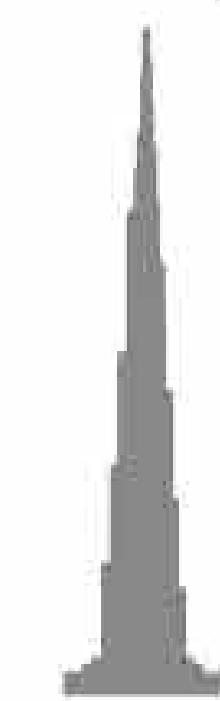
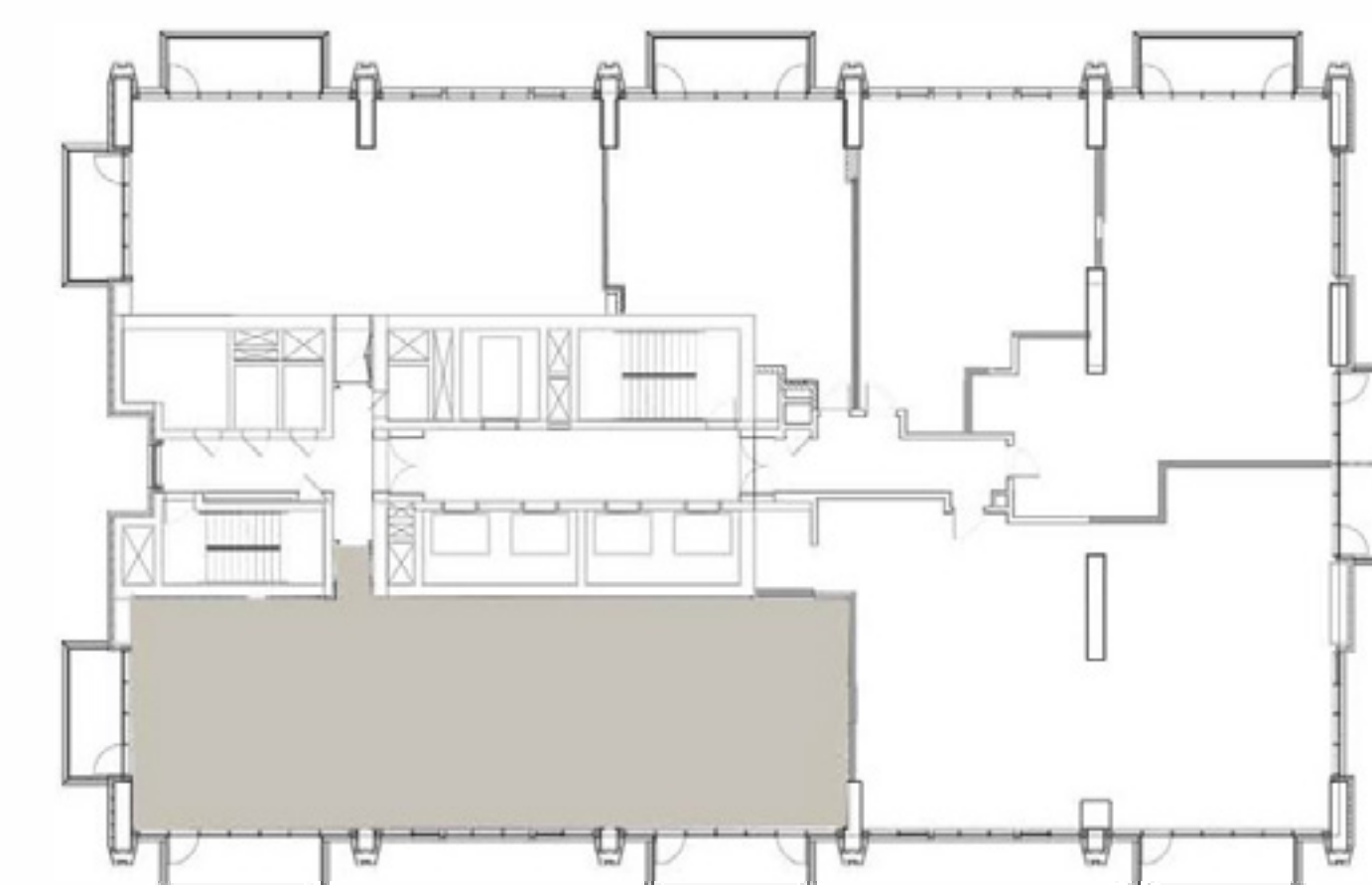
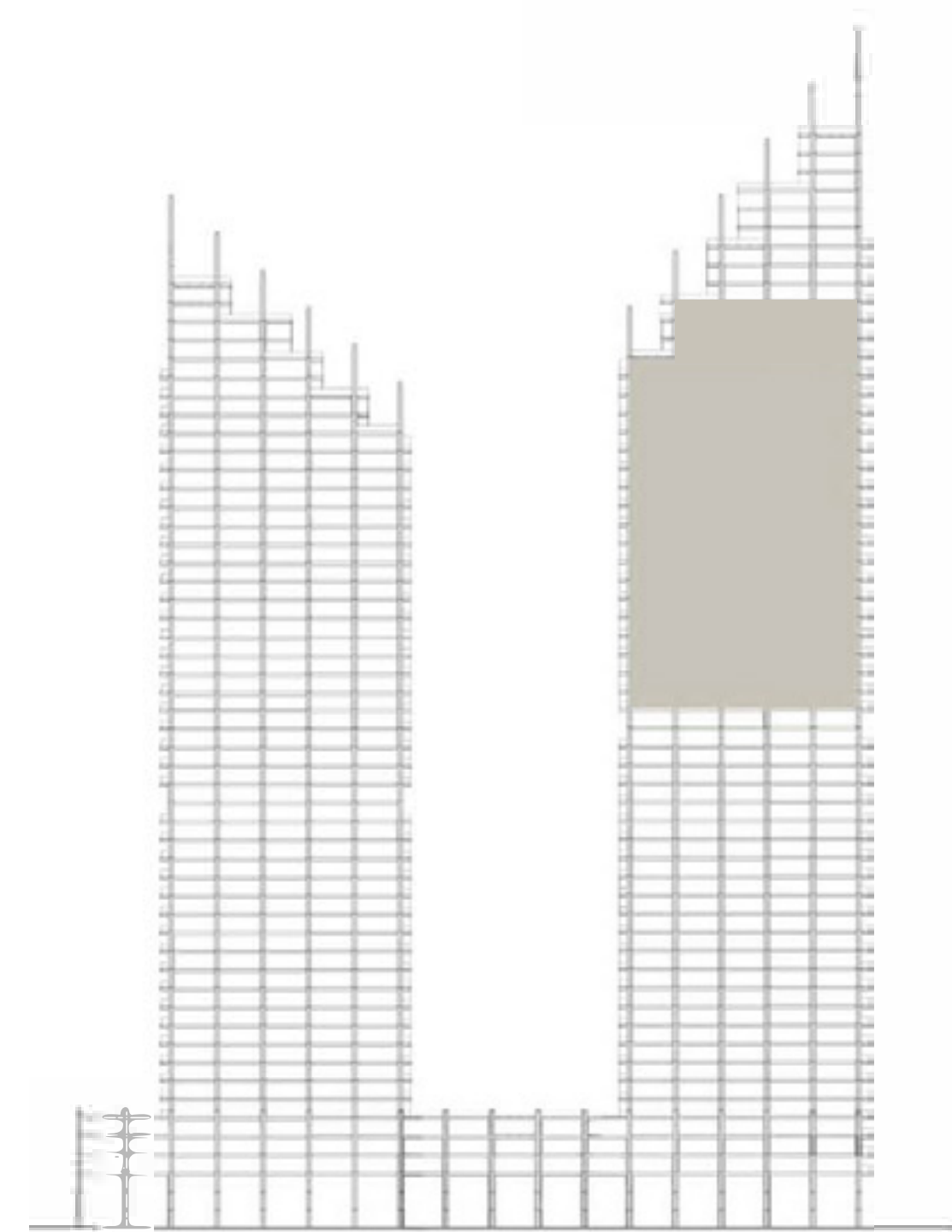
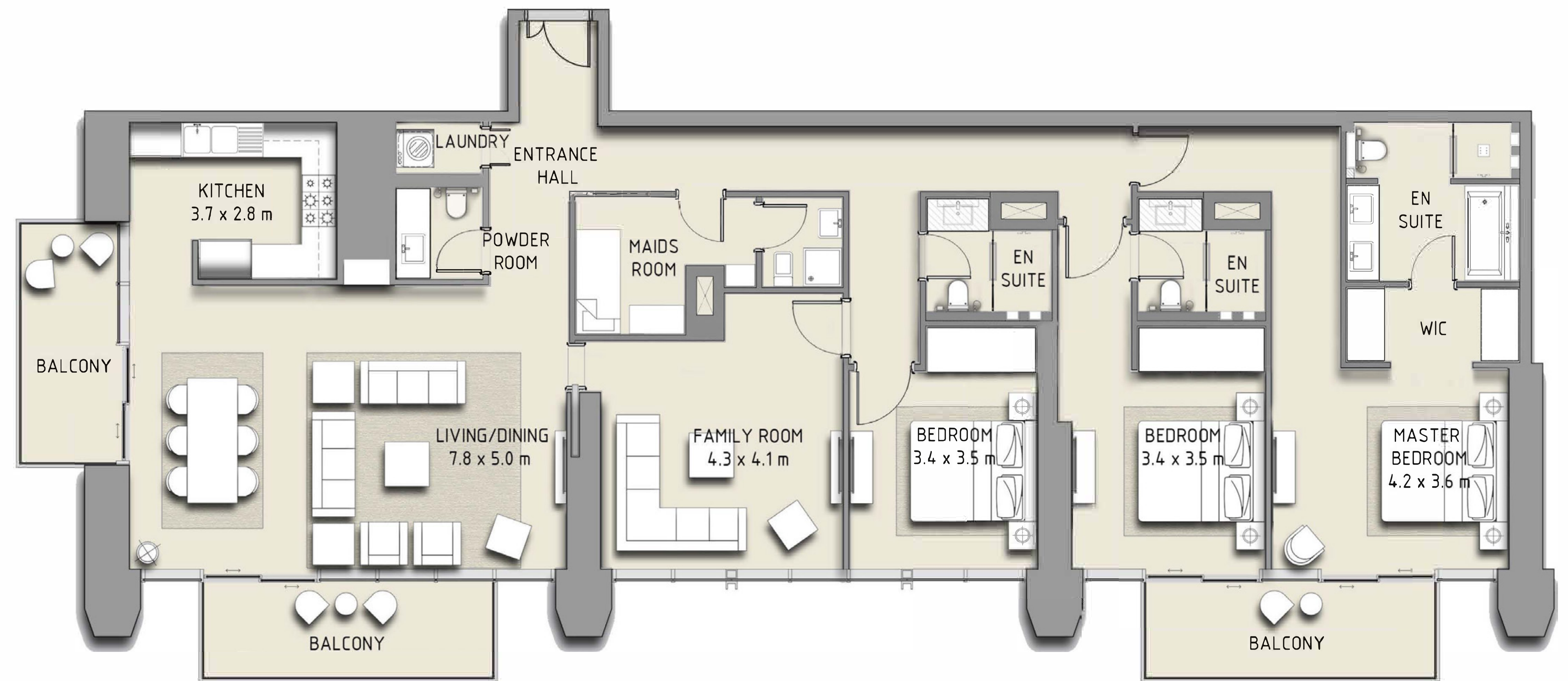
TOWER 1

### 3 BEDROOM

LEVEL 25 - 43

UNIT 01

SUITE AREA	2253 SQ.FT.	209.31 SQ.M.
BALCONY AREA	276 SQ.FT.	28.90 SQ.M.
TOTAL AREA	2529 SQ.FT.	241.07 SQ.M.



FLOOR PLAN 1. All dimensions are in imperial and metric, and measured from finish to finish excluding construction tolerances. 2. All materials, dimensions, and drawings are approximate only. 3. Information is subject to change without notice, at developer's absolute discretion. 4. Actual area may vary from the stated area. 5. Drawings not to scale. 6. All images used are for illustrative purposes only and do not represent the actual size, features, specifications, fittings, and furnishings. 7. The developer reserves the right to make revisions / alterations, at its absolute discretion, without any liability whatsoever.

# DOWNTOWN DUBAI

## BLVD HEIGHTS

EXECUTIVE RESIDENCES

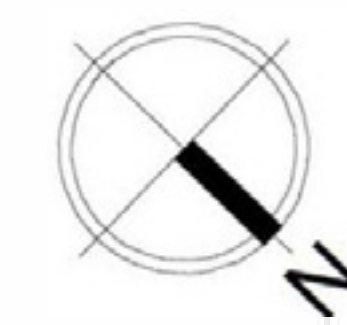
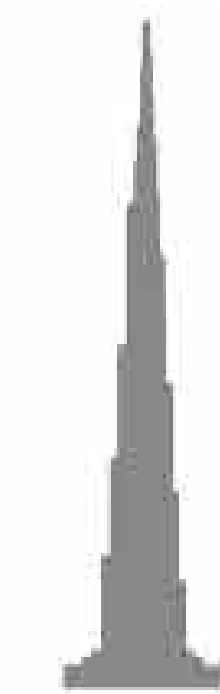
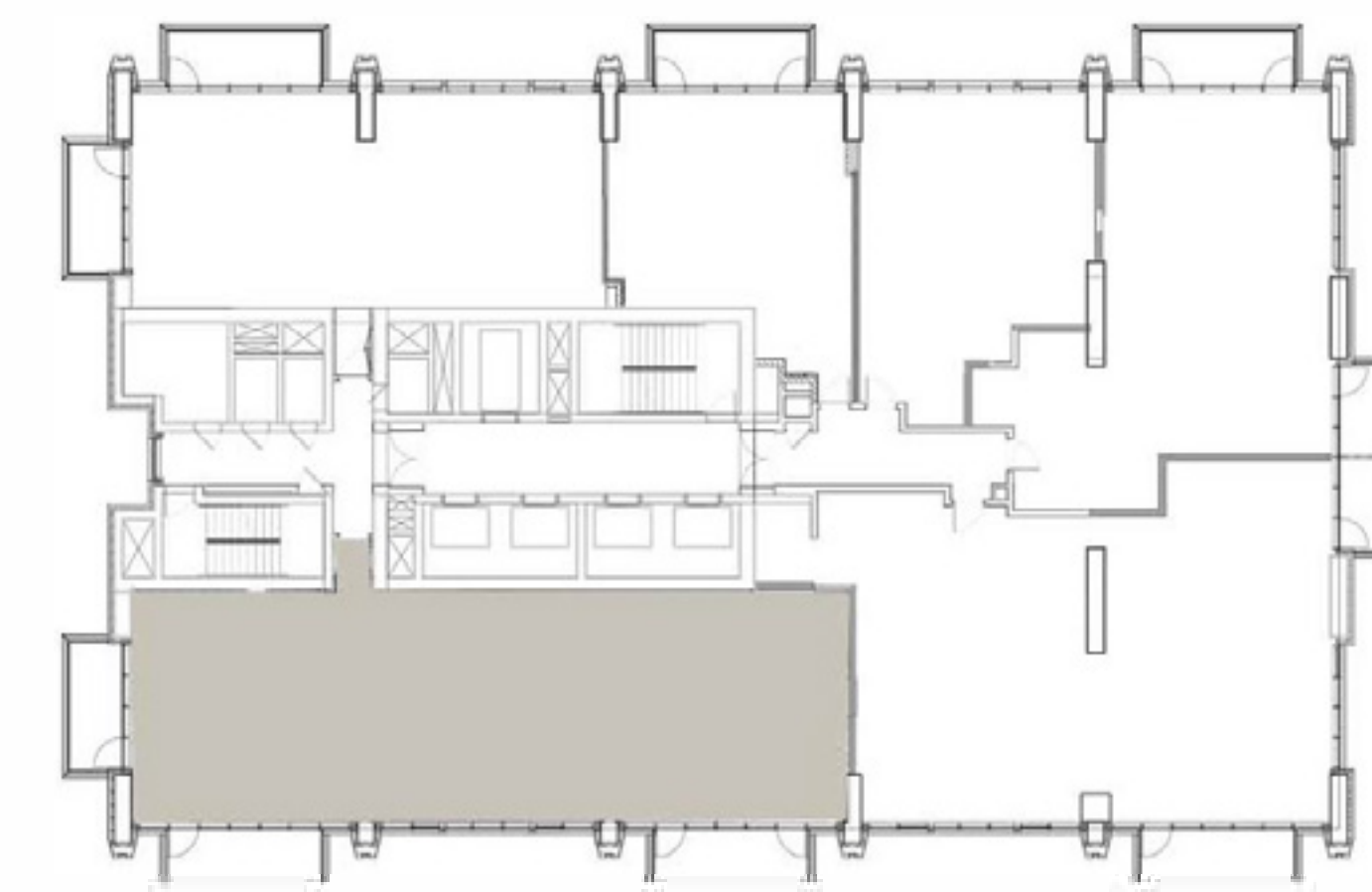
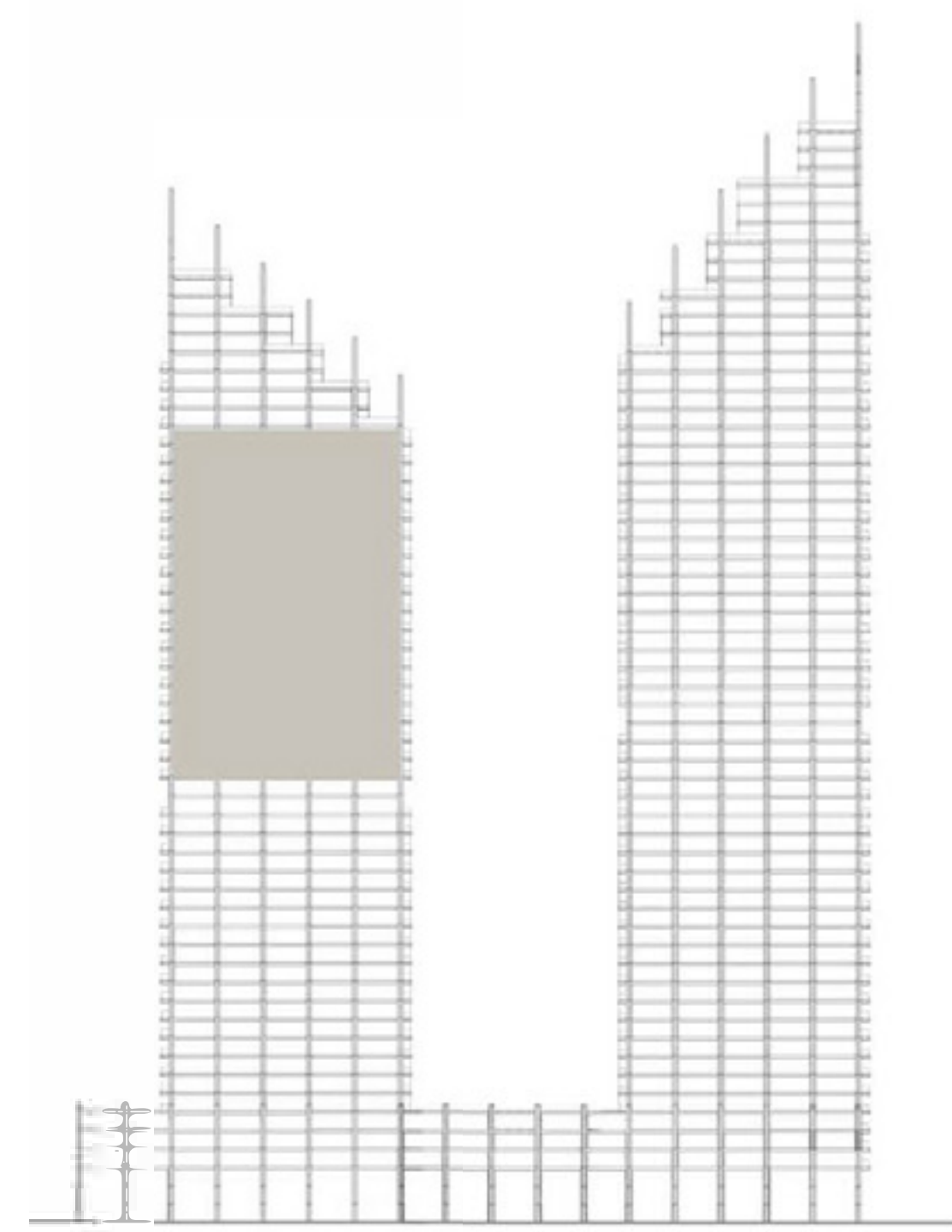
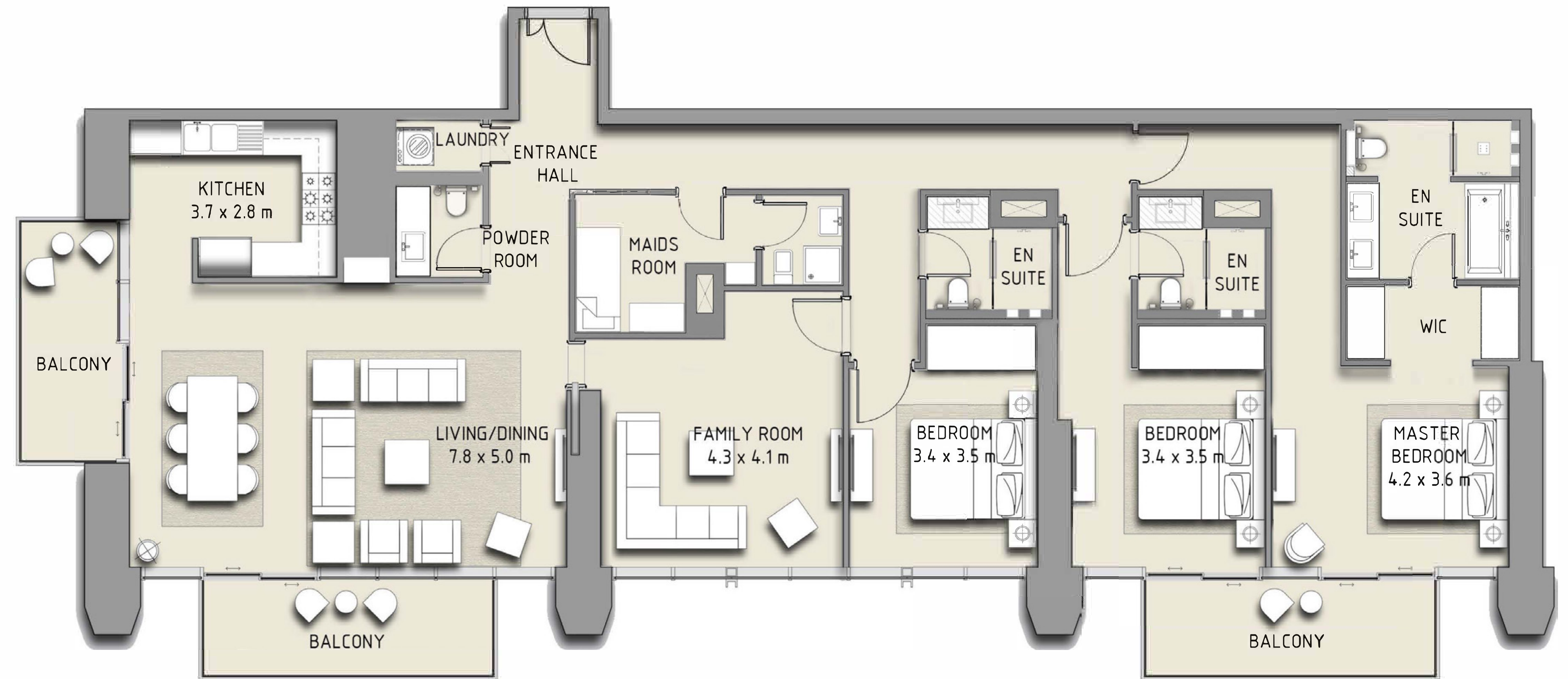
TOWER 2

### 3 BEDROOM

LEVEL 21 - 39

UNIT 01

SUITE AREA	2253 SQ.FT.	209.31 SQ.M.
BALCONY AREA	172.2 SQ.FT.	16.00 SQ.M.
TOTAL AREA	2529 SQ.FT.	241.07 SQ.M.



FLOOR PLAN 1. All dimensions are in imperial and metric, and measured from finish to finish excluding construction tolerances. 2. All materials, dimensions, and drawings are approximate only. 3. Information is subject to change without notice, at developer's absolute discretion. 4. Actual area may vary from the stated area. 5. Drawings not to scale. 6. All images used are for illustrative purposes only and do not represent the actual size, features, specifications, fittings, and furnishings. 7. The developer reserves the right to make revisions / alterations, at it's absolute discretion, without any liability whatsoever.

# DOWNTOWN DUBAI

## BLVD HEIGHTS

EXECUTIVE RESIDENCES

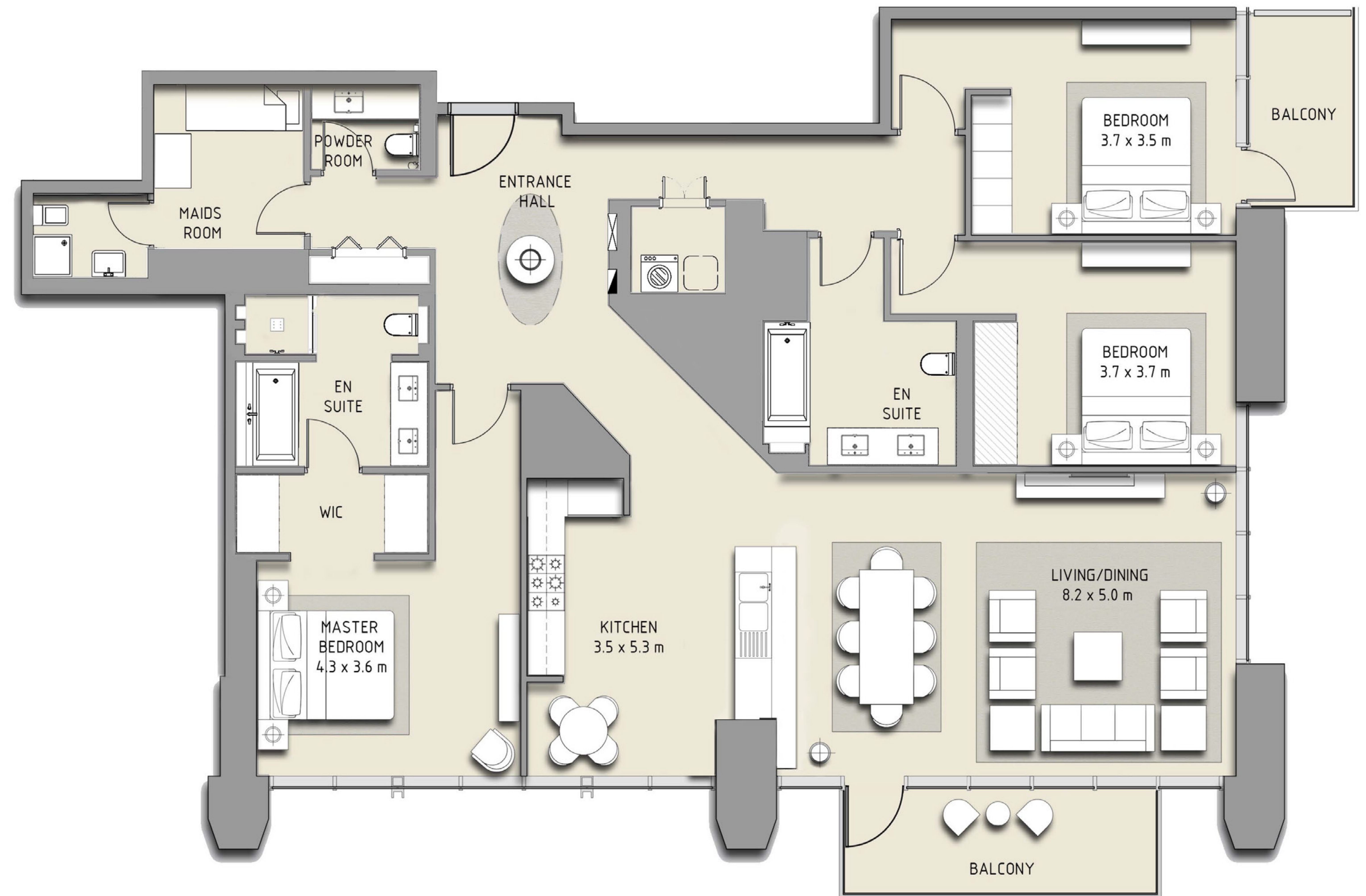
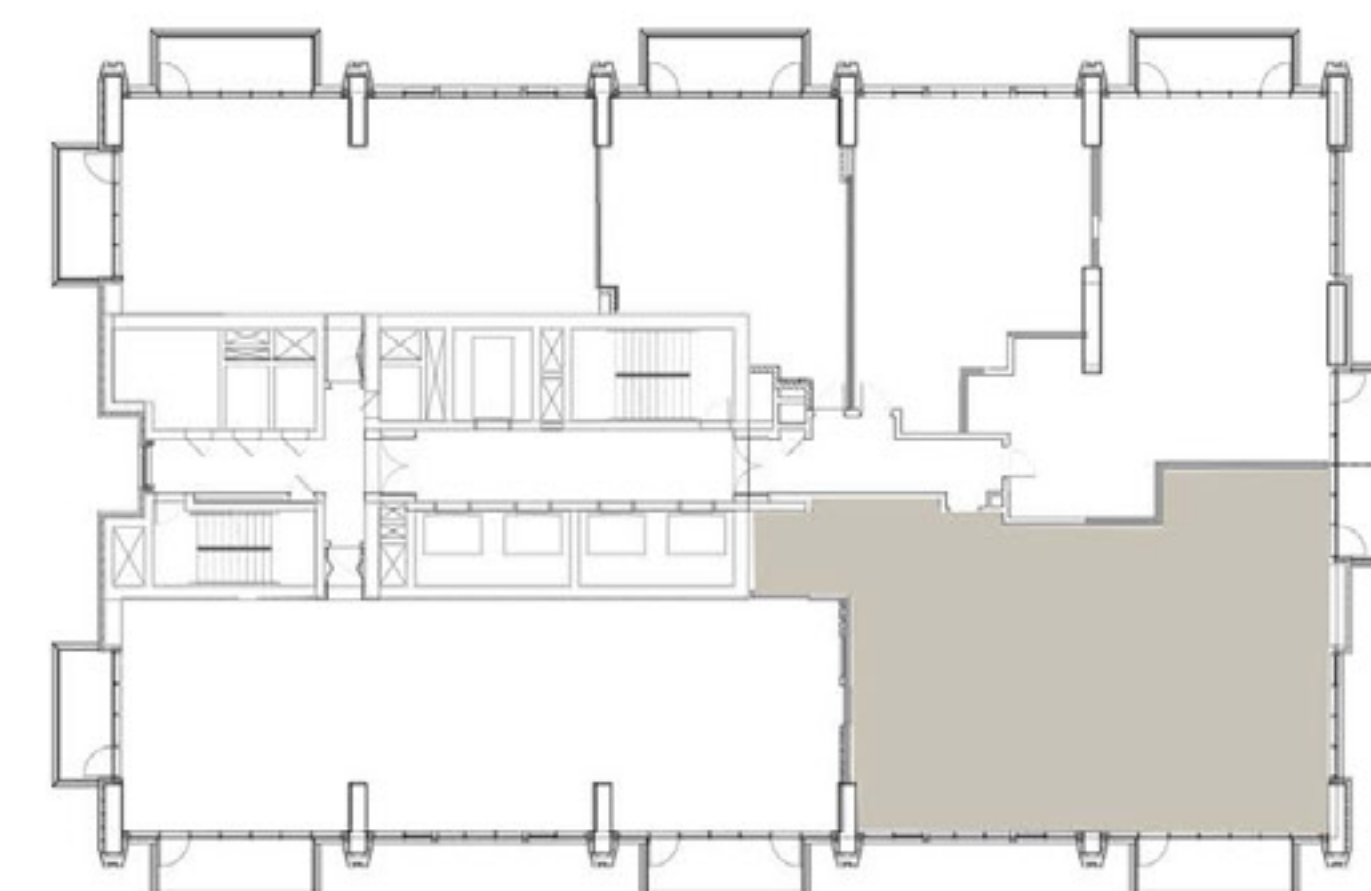
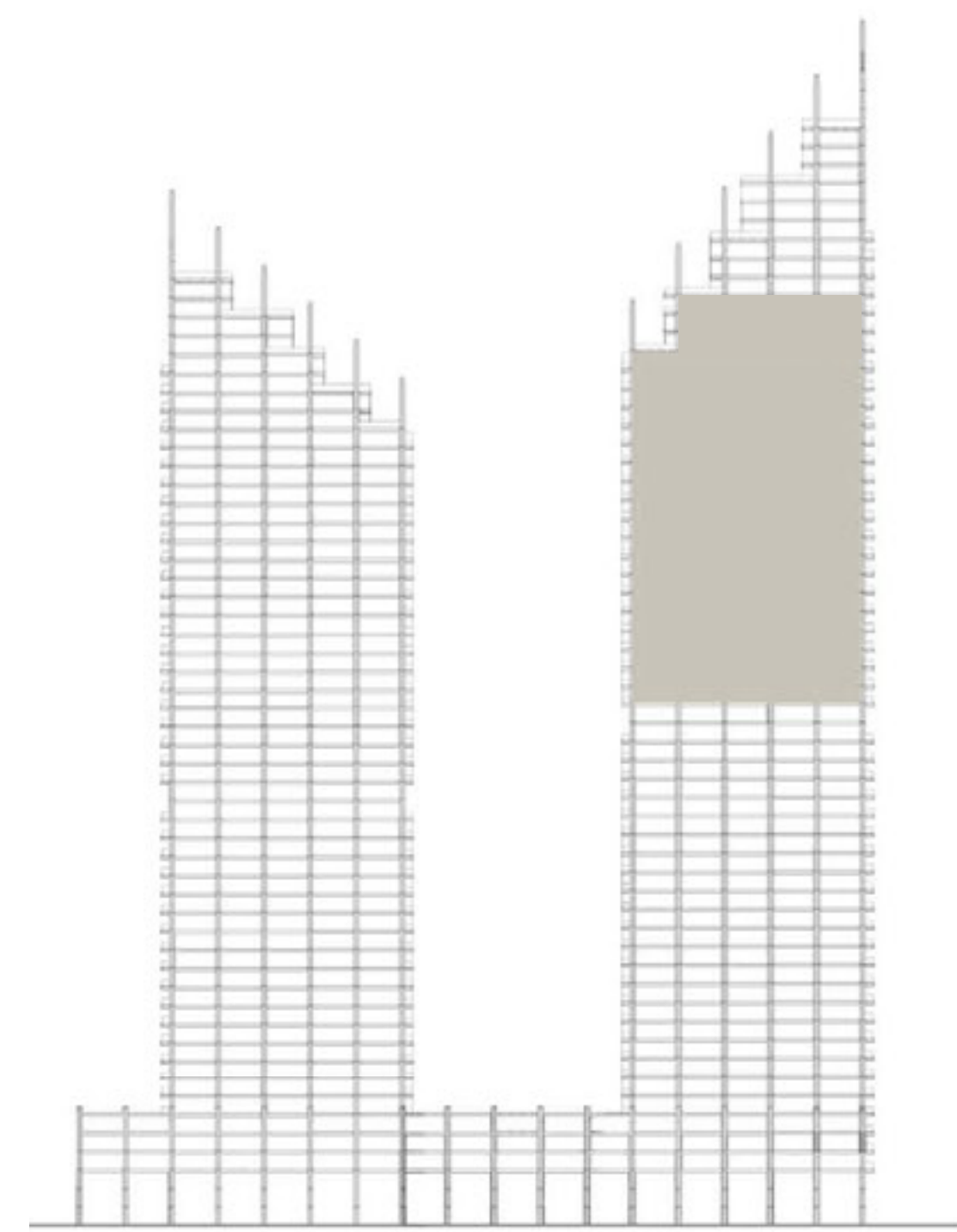
TOWER 1

### 3 BEDROOM

LEVEL 25 - 43

UNIT 06

SUITE AREA	2161 SQ.FT.	212.17 SQ.M.
BALCONY AREA	158 SQ.FT.	28.90 SQ.M.
TOTAL AREA	2319 SQ.FT.	241.07 SQ.M.



FLOOR PLAN 1. All dimensions are in imperial and metric, and measured from finish to finish excluding construction tolerances. 2. All materials, dimensions, and drawings are approximate only. 3. Information is subject to change without notice, at developer's absolute discretion. 4. Actual area may vary from the stated area. 5. Drawings not to scale. 6. All images used are for illustrative purposes only and do not represent the actual size, features, specifications, fittings, and furnishings. 7. The developer reserves the right to make revisions / alterations, at its absolute discretion, without any liability whatsoever.

# DOWNTOWN DUBAI

## BLVD HEIGHTS

EXECUTIVE RESIDENCES

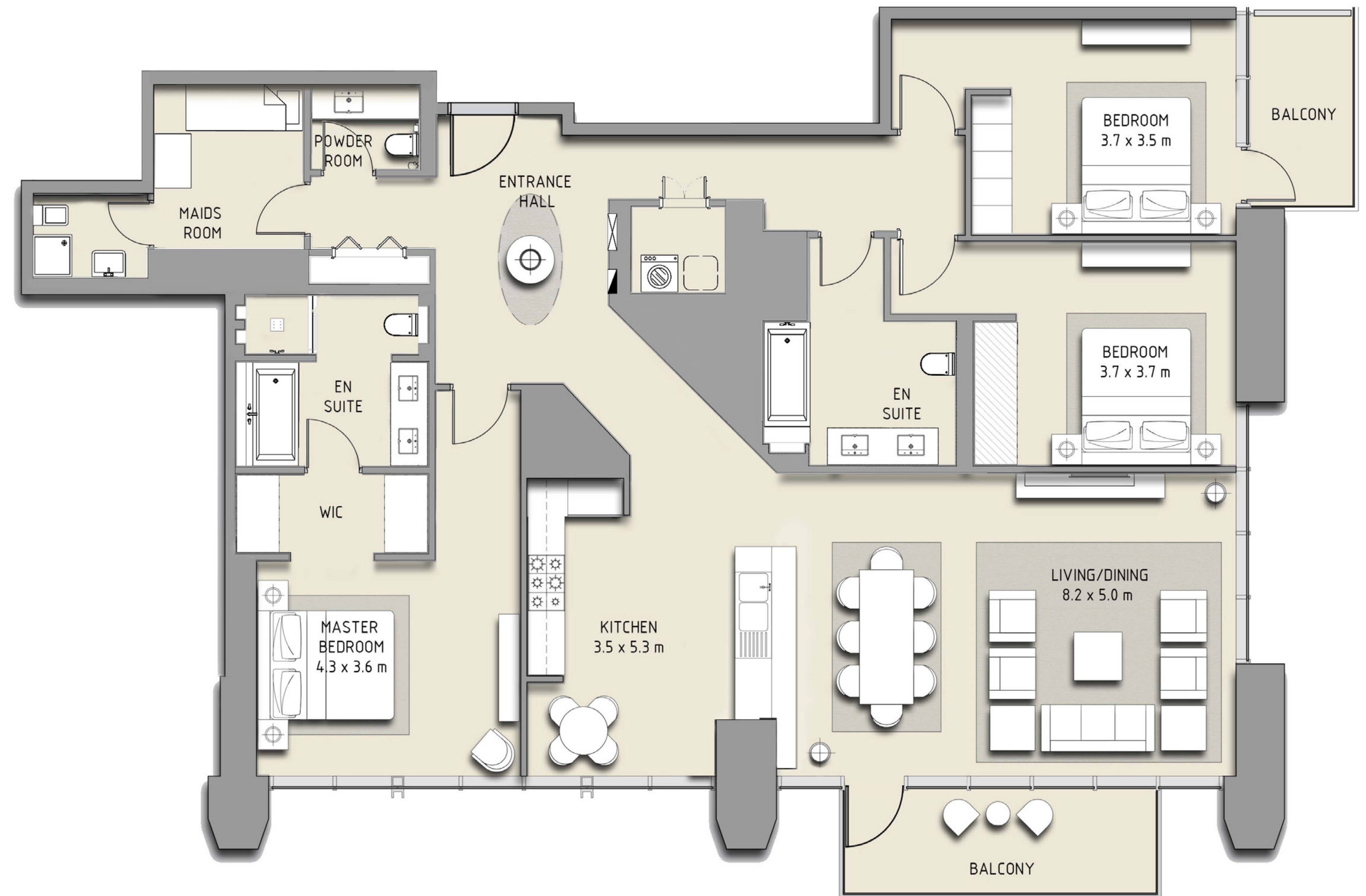
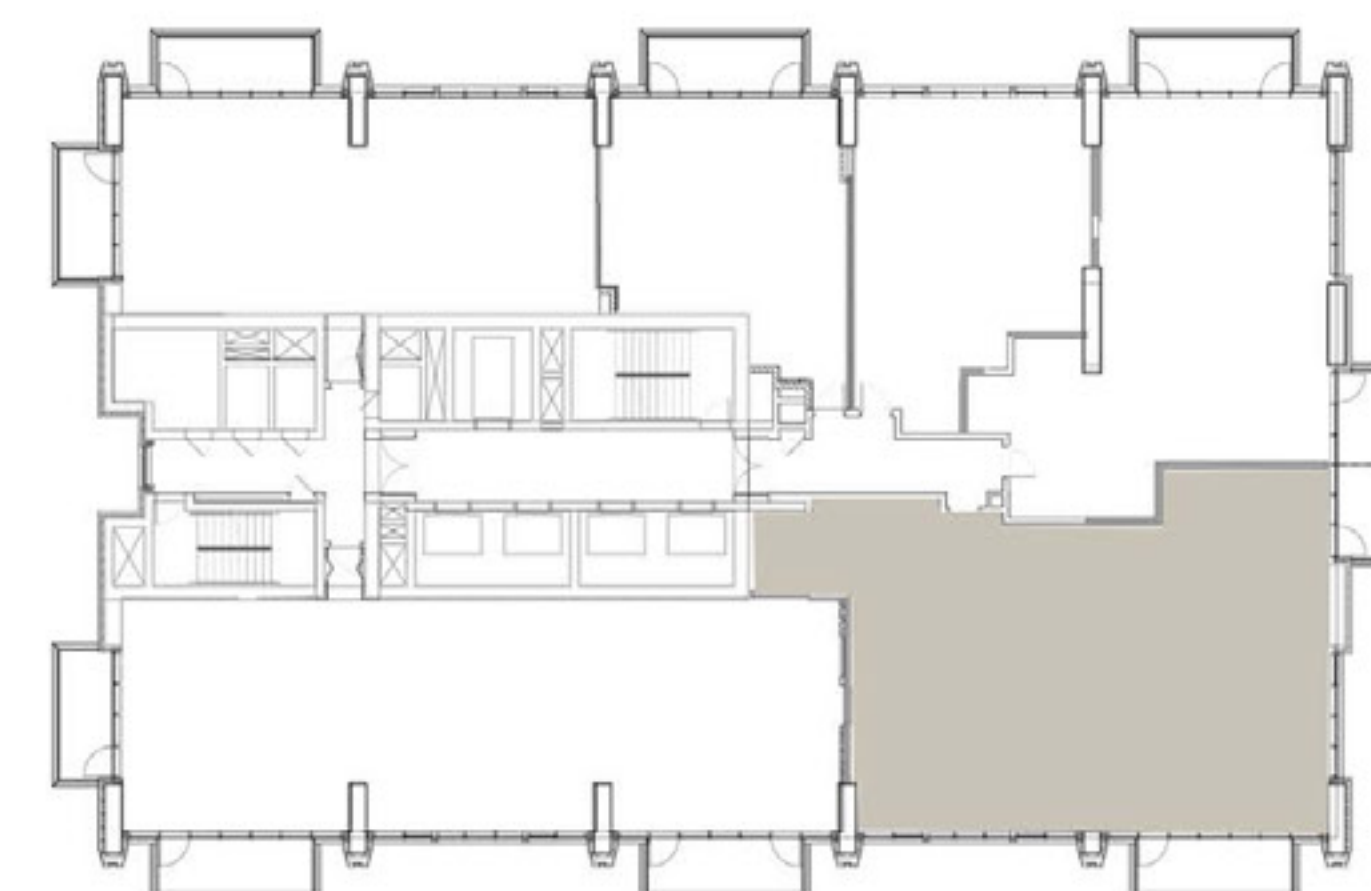
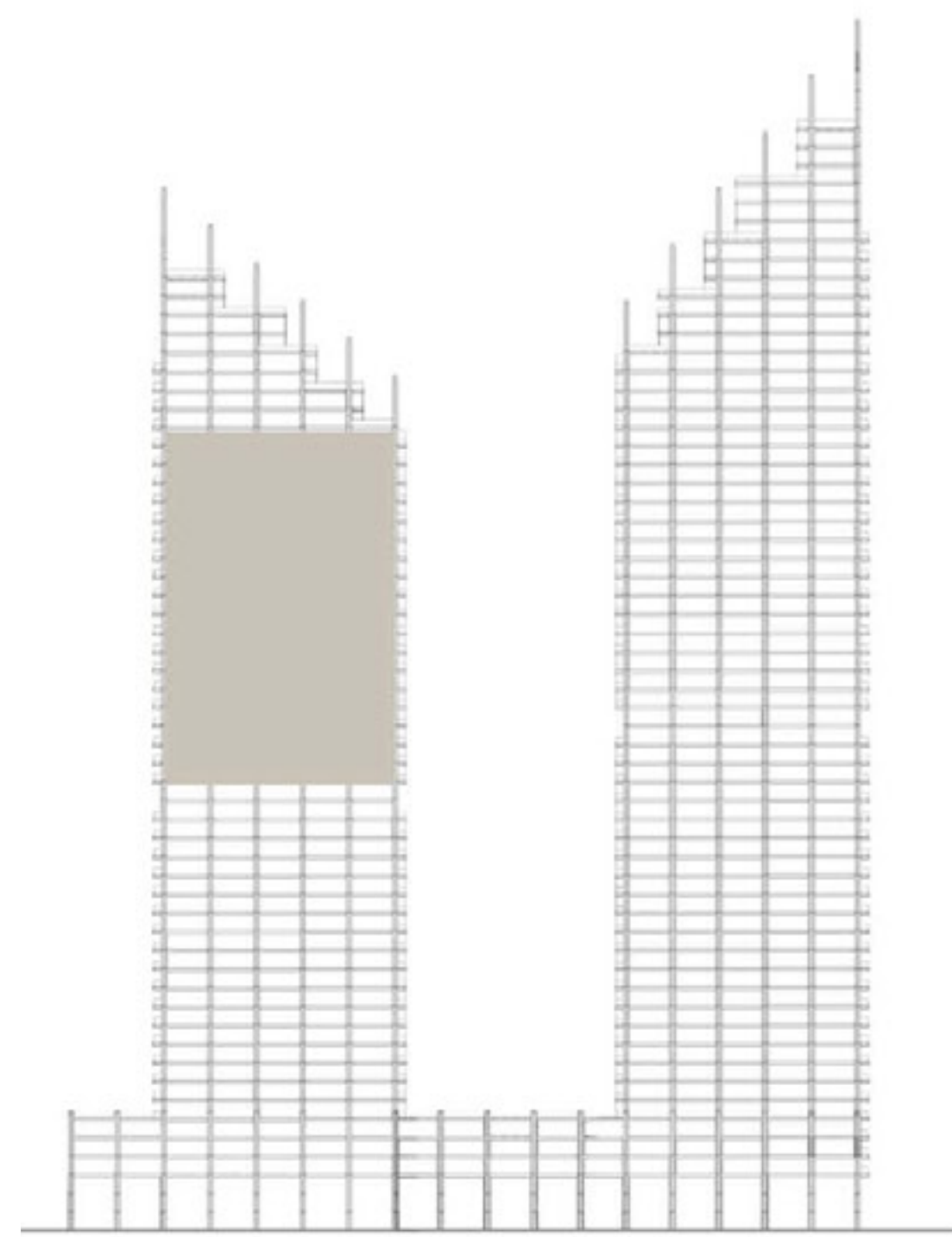
TOWER 2

### 3 BEDROOM

LEVEL 21 - 39

UNIT 06

SUITE AREA	2161 SQ.FT.	212.17 SQ.M.
BALCONY AREA	172.2 SQ.FT.	16.00 SQ.M.
TOTAL AREA	2319 SQ.FT.	241.07 SQ.M.



FLOOR PLAN 1. All dimensions are in imperial and metric, and measured from finish to finish excluding construction tolerances. 2. All materials, dimensions, and drawings are approximate only. 3. Information is subject to change without notice, at developer's absolute discretion. 4. Actual area may vary from the stated area. 5. Drawings not to scale. 6. All images used are for illustrative purposes only and do not represent the actual size, features, specifications, fittings, and furnishings. 7. The developer reserves the right to make revisions / alterations, at its absolute discretion, without any liability whatsoever.

# DOWNTOWN DUBAI

## BLVD HEIGHTS

EXECUTIVE RESIDENCES

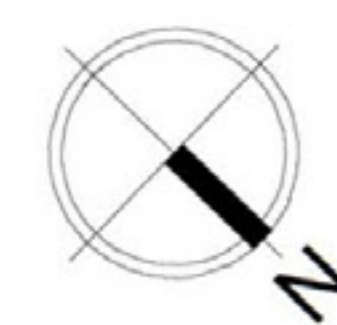
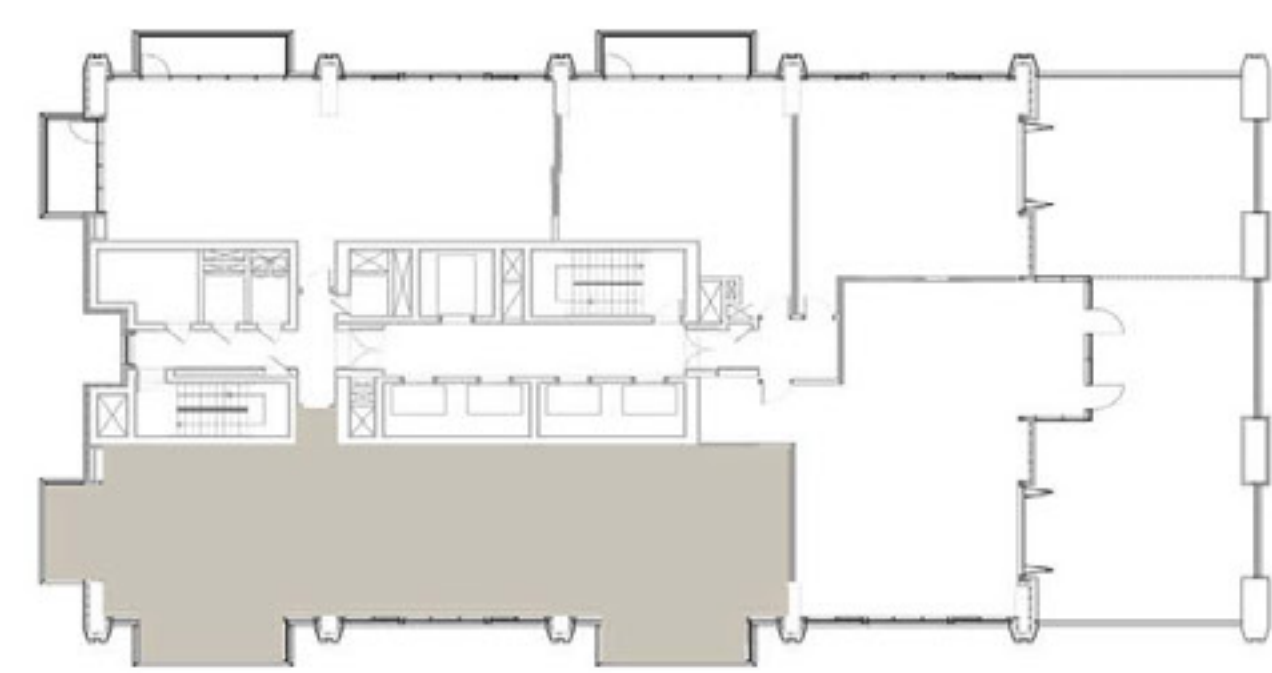
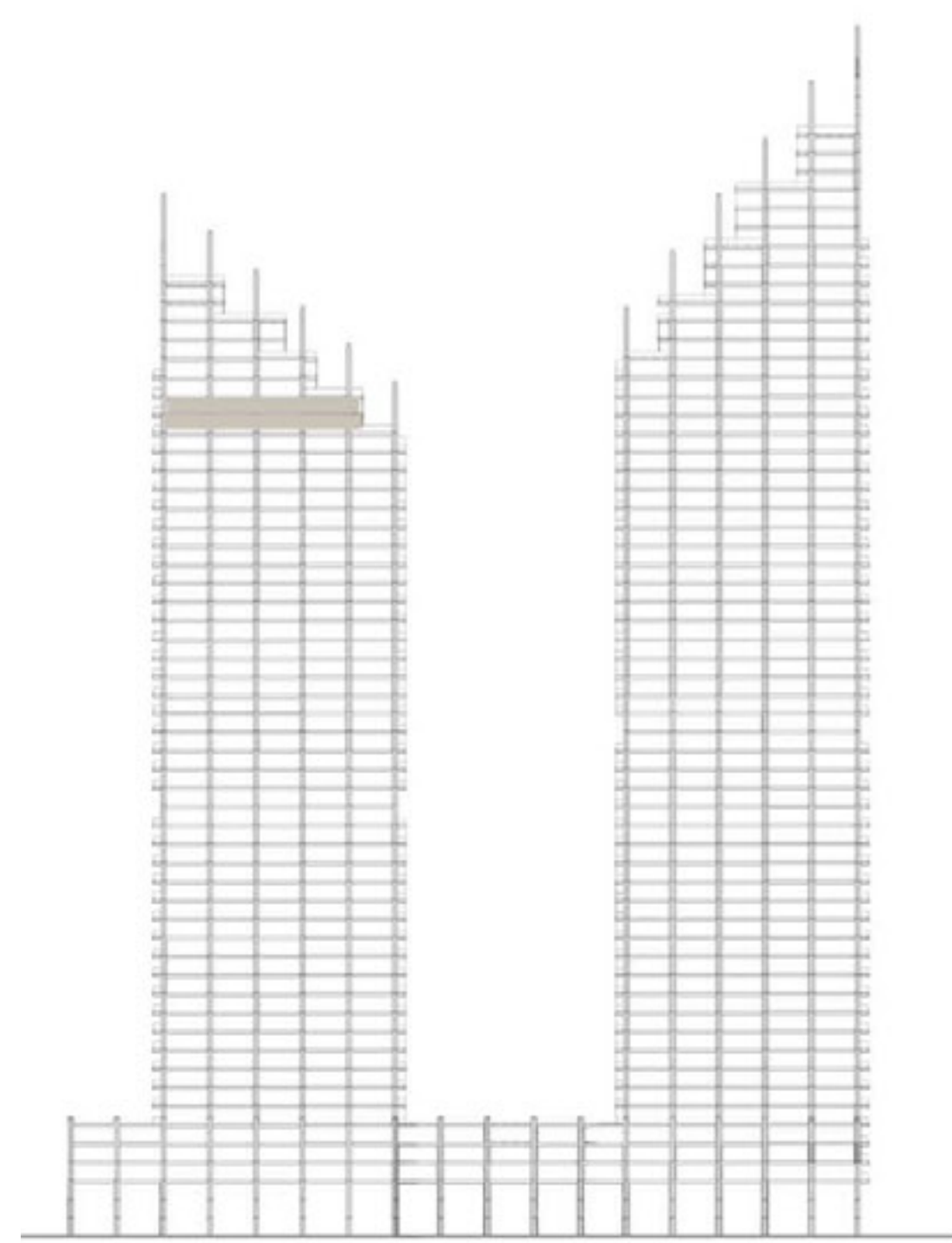
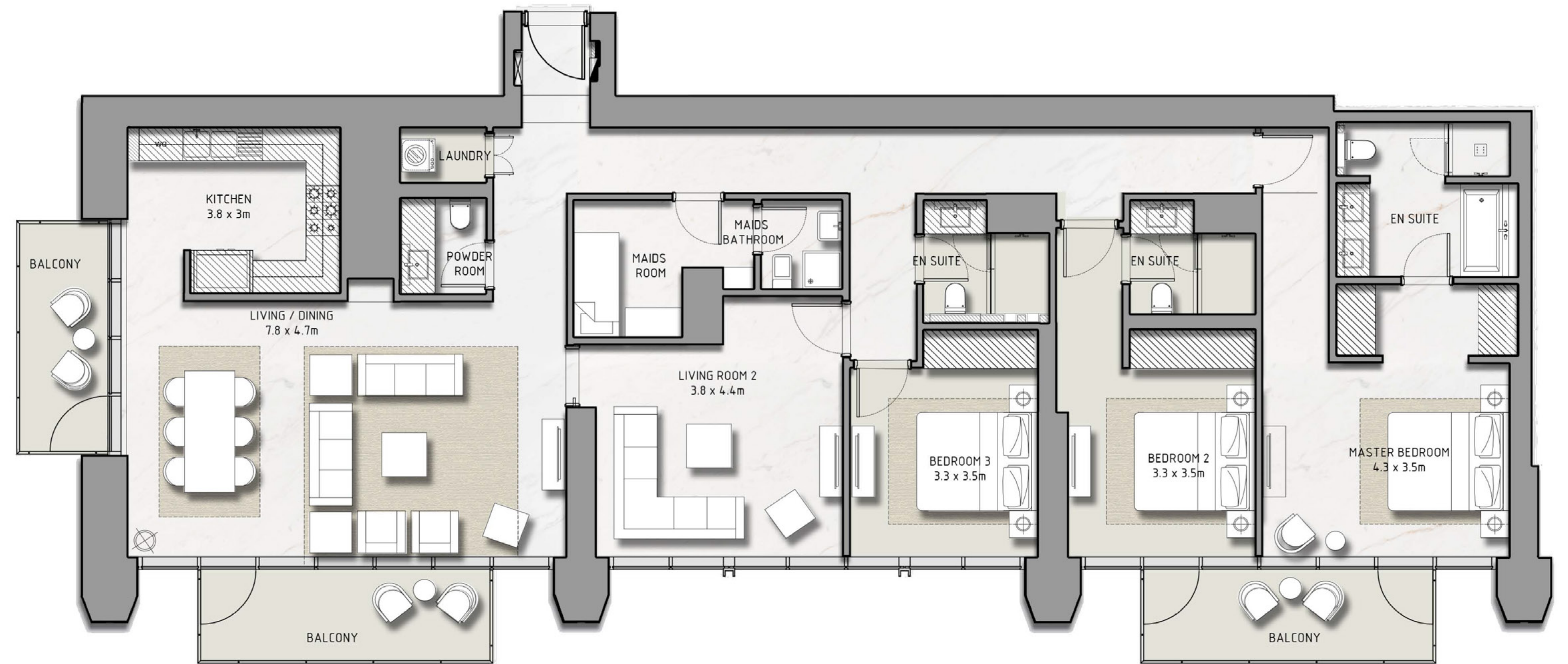
TOWER 2

### 3 BEDROOM

LEVEL 40 - 41

UNIT 01

SUITE AREA	2268 SQ.FT.	213.13 SQ.M.
BALCONY AREA	311 SQ.FT.	28.90 SQ.M.
TOTAL AREA	2579 SQ.FT.	242.03 SQ.M.



FLOOR PLAN 1. All dimensions are in imperial and metric, and measured from finish to finish excluding construction tolerances. 2. All materials, dimensions, and drawings are approximate only. 3. Information is subject to change without notice, at developer's absolute discretion. 4. Actual area may vary from the stated area. 5. Drawings not to scale. 6. All images used are for illustrative purposes only and do not represent the actual size, features, specifications, fittings, and furnishings. 7. The developer reserves the right to make revisions / alterations, at its absolute discretion, without any liability whatsoever.



### CONTACT US

+971 4 248 3400 | +971 55 162 3236

Email Us

info@tanamiproperties.ae

For More Info...

<https://www.tanamiproperties.com/Projects/BLVD-Heights-Executive-Residences>



### ADDRESS

Office 3405, Marina Plaza,  
Al Marsa Street, Dubai Marina, UAE

EMAAR