

Tower C  
**CREST**  
GRANDE



UNIT & FLOOR PLANS



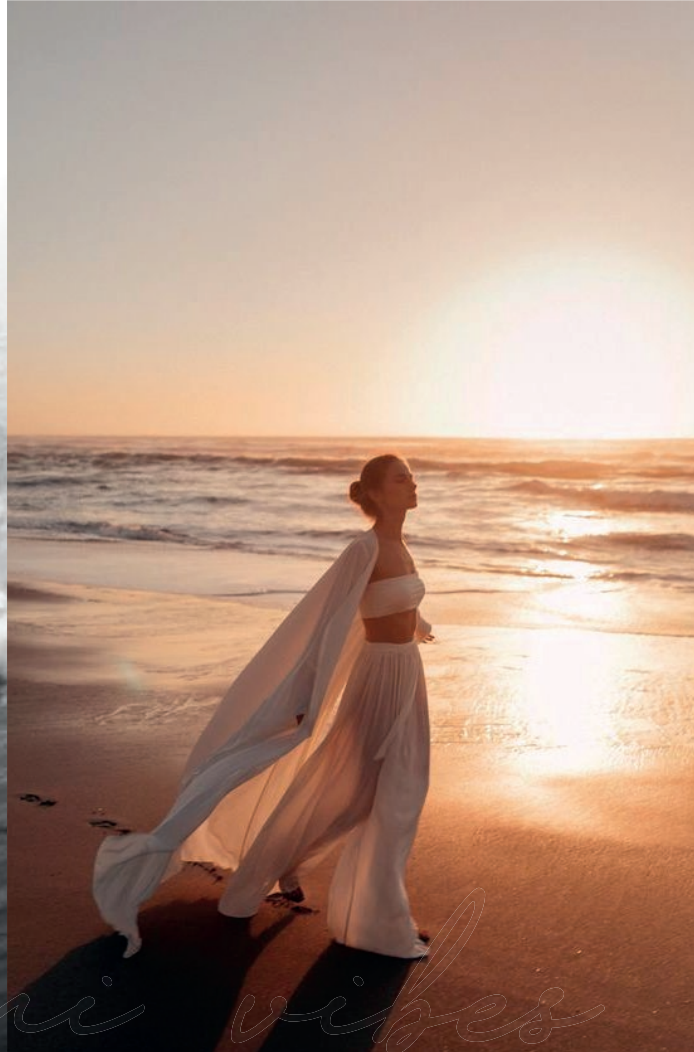
SOBHA HARTLAND



*At the beach*

life is different. Time doesn't move  
hour to hour but mood to moment. We  
live by the currents, plan by the tides  
and follow the Sun.

Sandy Gingras



*Miami vibes*

Beachfront lives &

*Miami vibes*



## Miami-inspired *lifestyle*

A classy, elegant, and cosmopolitan island lifestyle in the center of Dubai, with resort-style relaxation surrounded by untouched nature and soothing waterways, and stunning views of the Dubai skyline and the world's largest tower.

*Refresh . regain . refocus*



## In the Waterfront District of Sobha Hartland

Sobha Hartland enjoys a waterfront boardwalk that is exclusive to the residents of its community who enjoy their evenings as is meant to be.

*Pre-Launching*

Tower C

**CREST**  
GRANDE



Waterfront *lifestyle*



*Enviabile* AMENITIES

*Hustle . sweat . respect*



Indoor & Outdoor  
GYMNASIUM

*Refresh . regain . refocus*



A Pristine Adult & Kids  
SWIMMING POOL



## SAUNA ROOM



*Catch . run . hide*



A Dedicated Playing Area  
**FOR YOUR KIDS**

*Scenic · mouthwatering · cuisines*



## RETAIL & RESTAURANTS



A dedicated barbecue zone  
**TO ENJOY YOUR  
WEEKENDS**

Tower C

# CREST

GRANDE



1-4 bedroom Waterfront Apartments  
starting from **1.3 MN\***

## Payment Plan

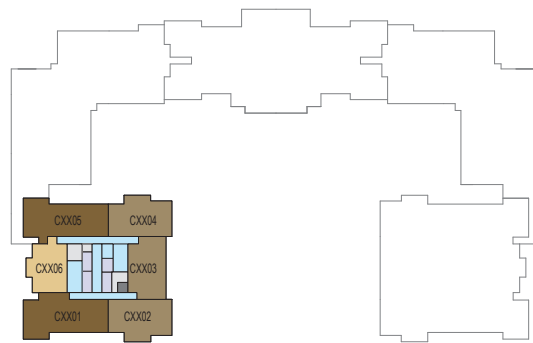
**60%**  
during construction

**40%**  
2 year post completion








# FLOOR PLAN LAYOUT



LEVEL 07-12



15-22 & 24-41

- |  |   |
|--|---|
|  1 BED UNIT |  LOBBIES, CORRIDORS & STAIRS |
|  2 BED UNIT |  SERVICES                    |
|  3 BED UNIT |  LIFT                        |
|  4 BED UNIT |   |

# 1 BEDROOM APARTMENT

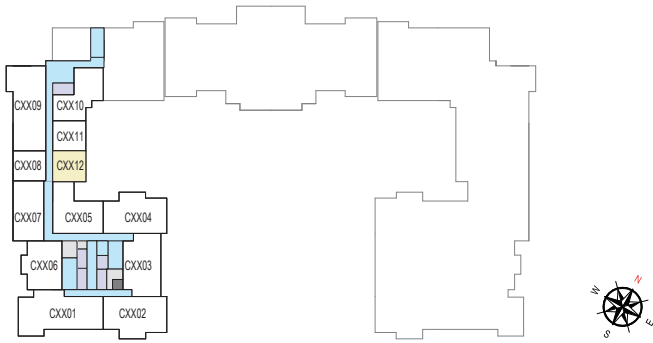
TYPE A (with Balcony)

TOTAL SALEABLE AREA

SUITE = 661.66 SQ.FT.

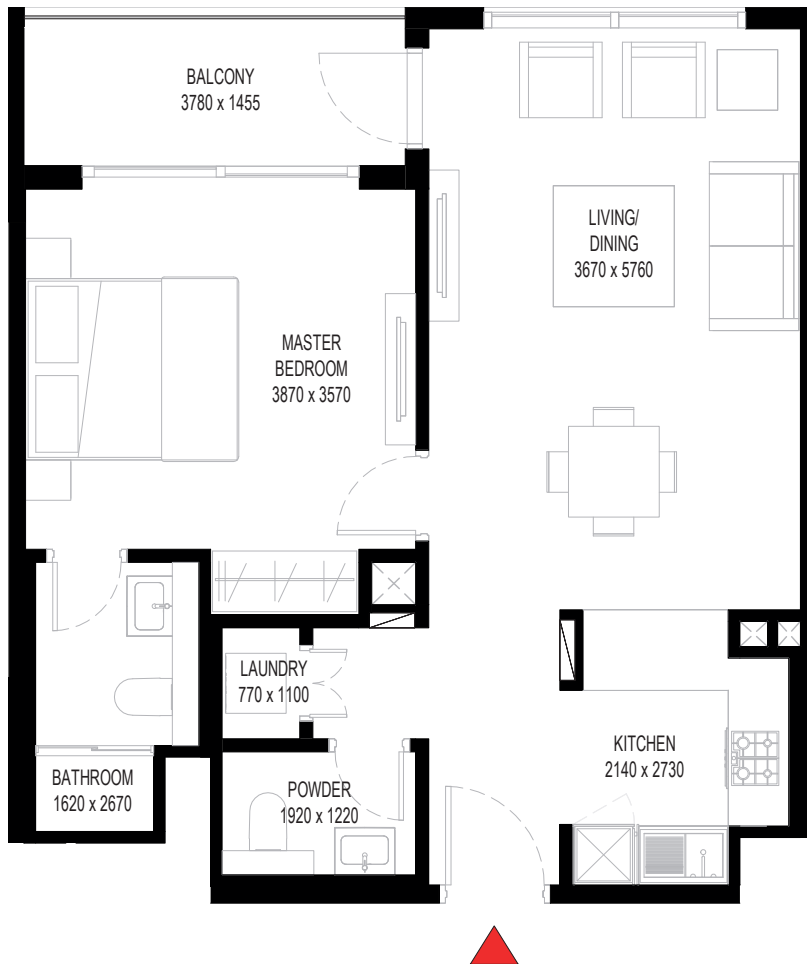
BALCONY = 72.55 SQ.FT.

TOTAL = 734.21 SQ.FT.



LEVEL 07-12

UNIT



List of unit numbers with this unit plan:

## VIEWS

Amenities

C0712, C0812, C0912, C1012, C1112, C1212

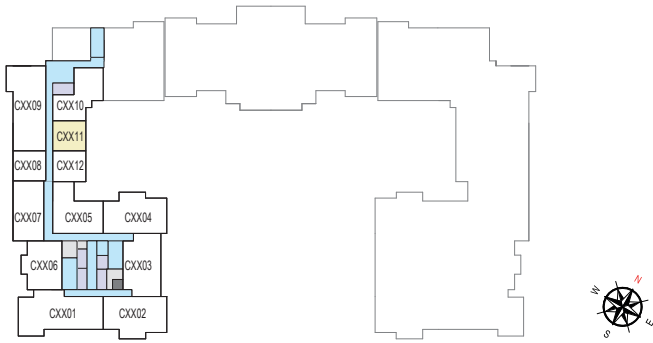


# 1 BEDROOM APARTMENT

TYPE A (with Balcony) - VARIANT 3

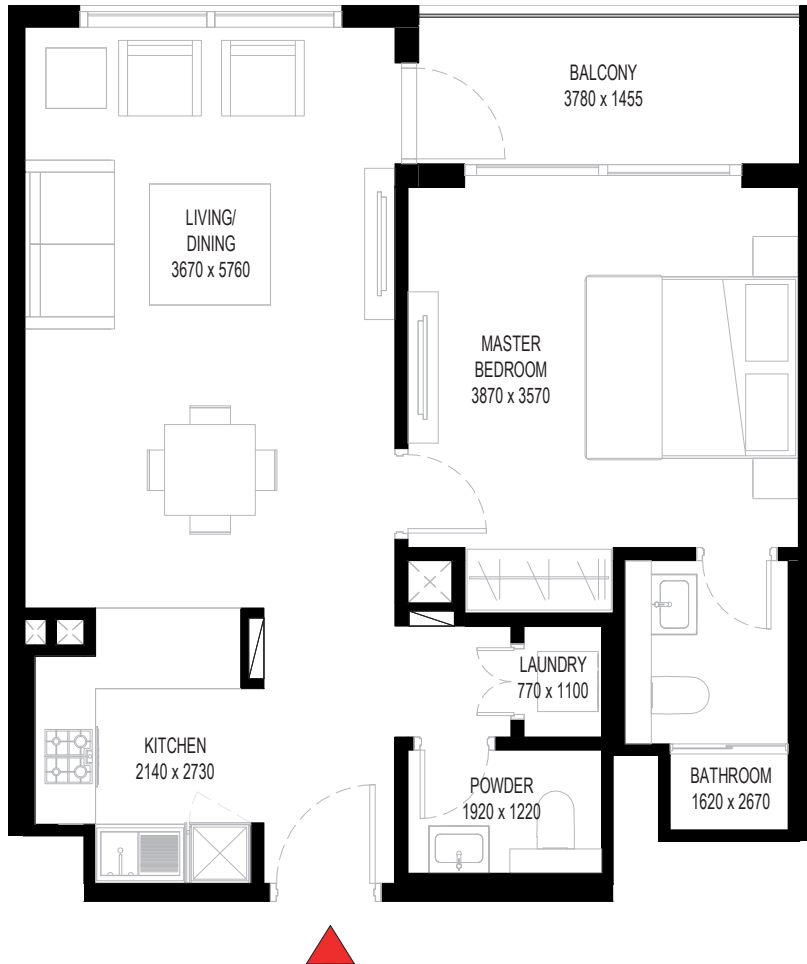
TOTAL SALEABLE AREA

SUITE = 661.12 SQ.FT  
BALCONY = 72.55 SQ.FT.  
TOTAL = 733.67 SQ.FT.



LEVEL 07-12

UNIT



List of unit numbers with this unit plan:

## VIEWS

Amenities

C0711, C0811, C0911, C1011, C1111, C1211



# 1 BEDROOM APARTMENT

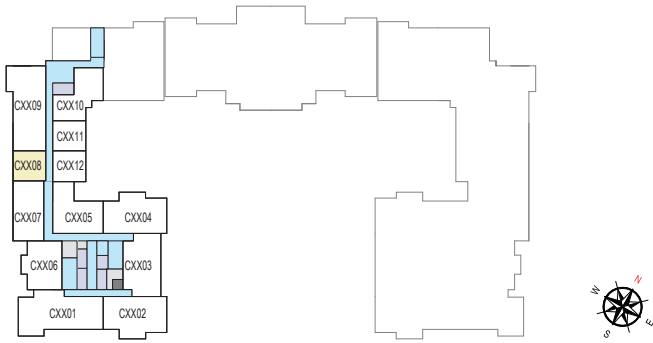
TYPE A (with Balcony) - VARIANT 4

TOTAL SALEABLE AREA

SUITE = 659.72 SQ.FT.

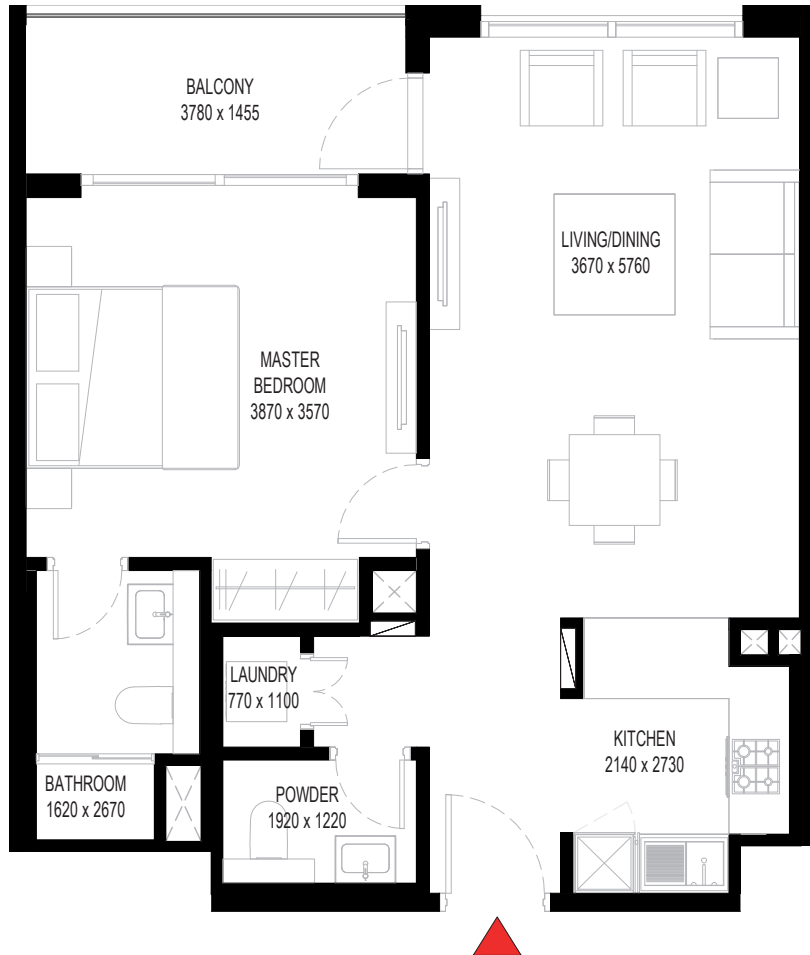
BALCONY = 68.14 SQ.FT.

TOTAL = 727.86 SQ.FT.



LEVEL 07-12

UNIT



List of unit numbers with this unit plan:

## VIEWS

Waterfront, Hartland  
C0708, C0808, C0908, C1008

Waterfront, Hartland, Downtown  
C1108, C1208

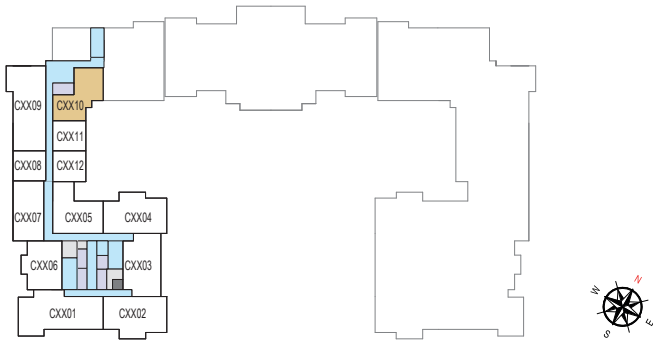


# 2 BEDROOM APARTMENT

TYPE D (with Maid Room + 2 Balconies) - VARIANT 1

**TOTAL SALEABLE AREA**

SUITE = 1,218.15 SQ.FT.  
 BALCONY = 126.05 SQ.FT.  
 TOTAL = 1,344.20 SQ.FT.



LEVEL 07-12

UNIT



List of unit numbers with this unit plan:

## VIEWS

Amenities

C0710, C0810, C0910, C1010, C1110, C1210

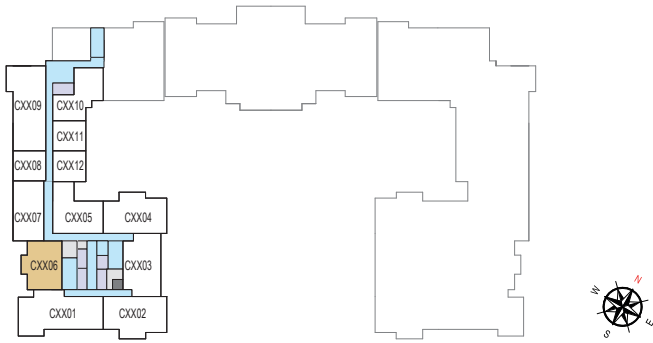


# 2 BEDROOM APARTMENT

TYPE F (with Maid Room + Balcony) - VARIANT 1

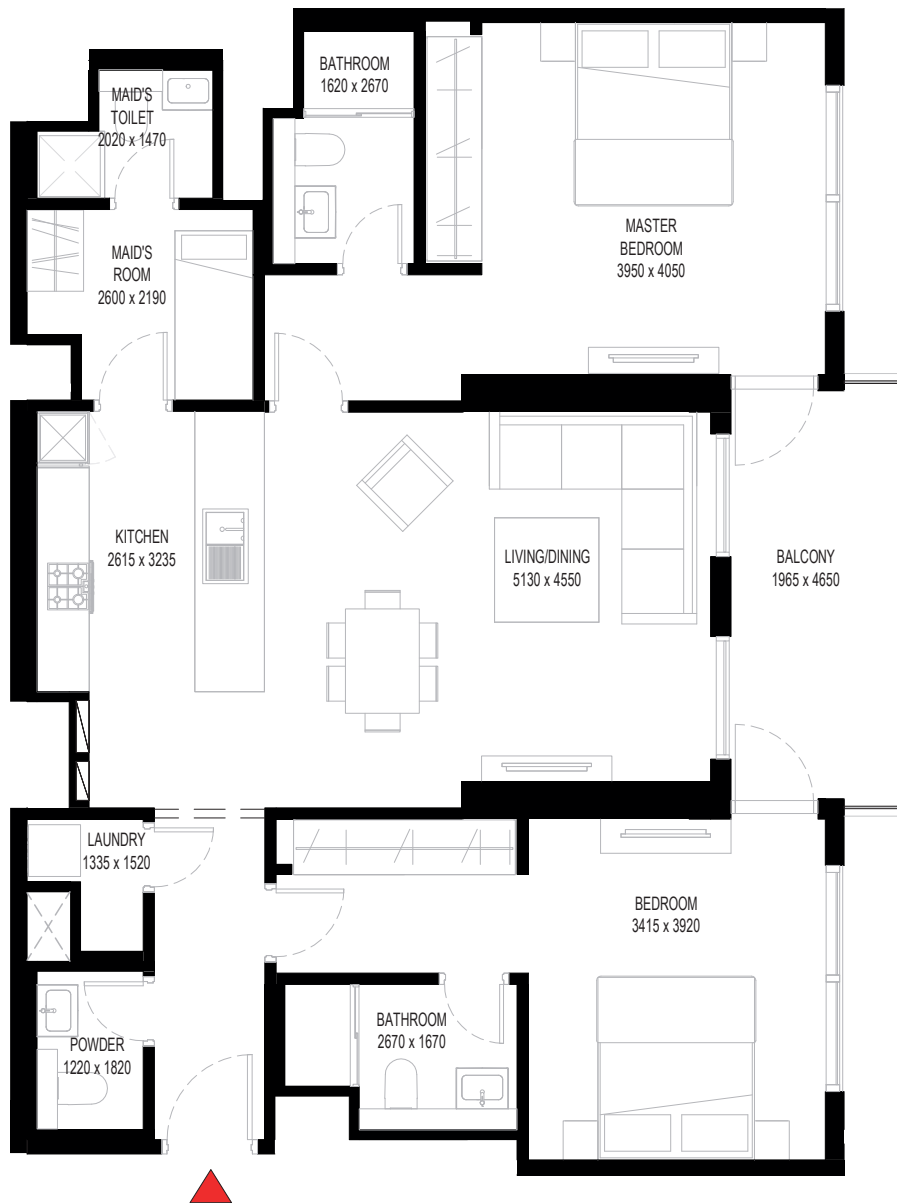
**TOTAL SALEABLE AREA**

SUITE = 1,216.86 SQ.FT.  
BALCONY = 108.82 SQ.FT.  
TOTAL = 1,325.68 SQ.FT.



LEVEL 07-12

UNIT



List of unit numbers with this unit plan:

## VIEWS

Waterfront, Hartland  
C0706, C0806, C0906, C1006

Waterfront, Hartland, Downtown  
C1106, C1206

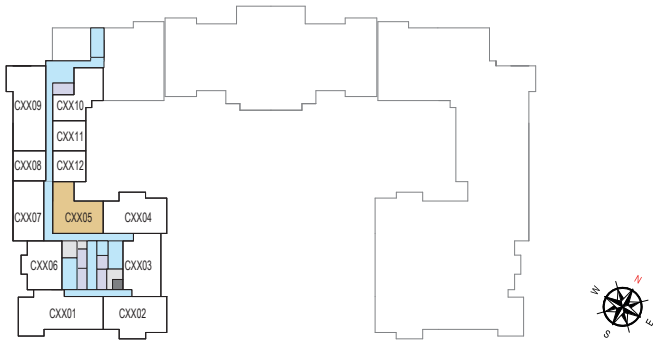


# 2 BEDROOM APARTMENT

TYPE G (with Maid Room + Balcony) - VARIANT 1

## TOTAL SALEABLE AREA

SUITE = 1,216.75 SQ.FT.  
 BALCONY = 334.33 SQ.FT.  
 TOTAL = 1,551.08 SQ.FT.



LEVEL 07-12

UNIT



List of unit numbers with this unit plan:

### VIEWS

Amenities

C0705, C0805, C0905, C1005, C1105, C1205

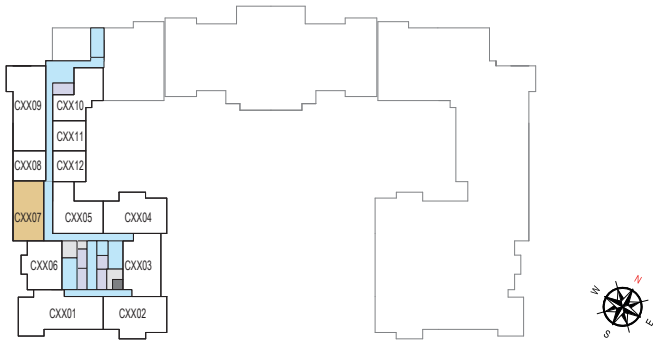


# 2 BEDROOM APARTMENT

TYPE J (with Maid Room + Balcony) - VARIANT 1

## TOTAL SALEABLE AREA

SUITE = 1,255.50 SQ.FT.  
 BALCONY = 137.78 SQ.FT.  
 TOTAL = 1,393.28 SQ.FT.



LEVEL 07-12

UNIT



List of unit numbers with this unit plan:

### VIEWS

Waterfront, Hartland  
 C0707, C0807, C0907, C1007

Waterfront, Hartland, Downtown  
 C1107, C1207

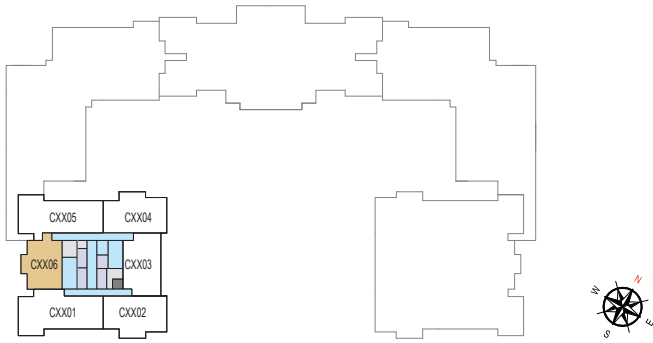


# 2 BEDROOM APARTMENT

TYPE L (with Maid Room + Balcony) - VARIANT 1

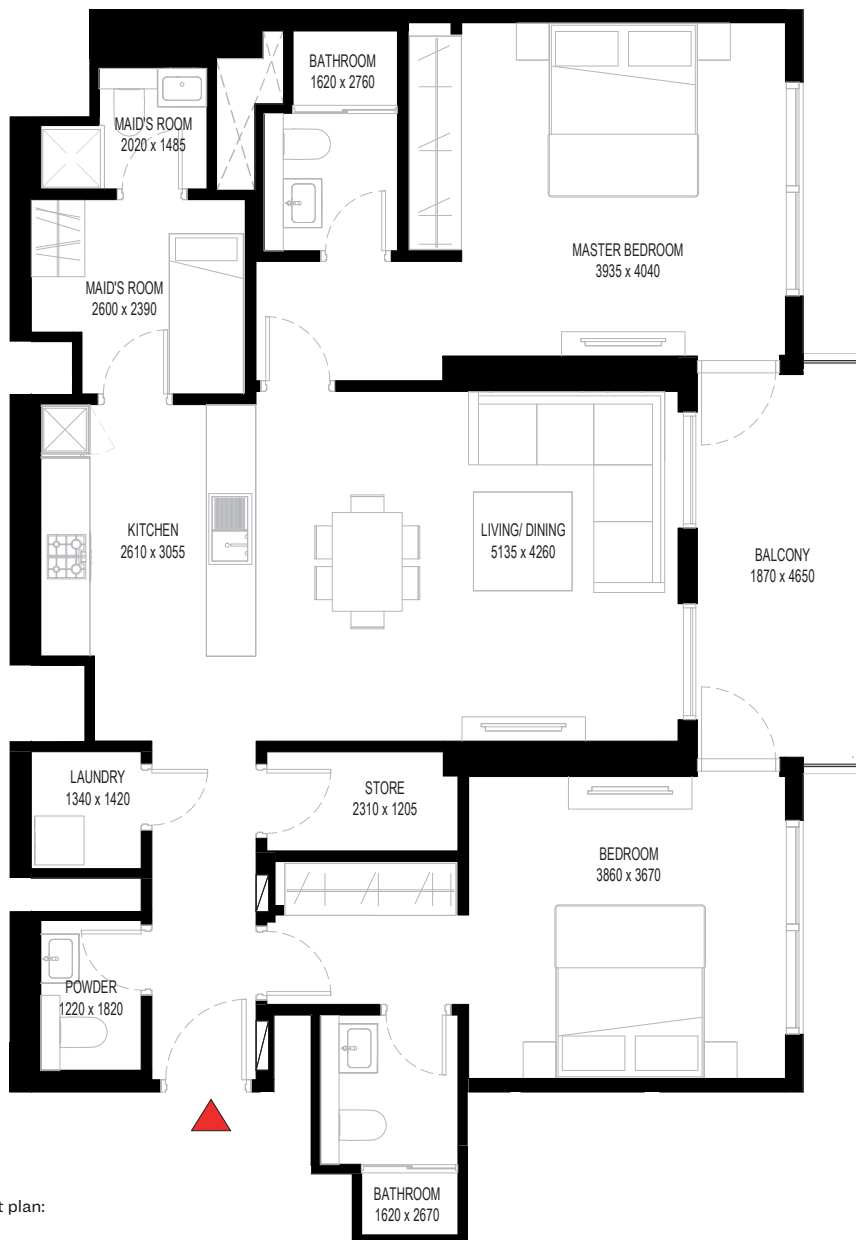
## TOTAL SALEABLE AREA

SUITE = 1,242.05 SQ.FT.  
BALCONY = 108.18 SQ.FT.  
TOTAL = 1,350.23 SQ.FT.



LEVEL 15-22 & 24-41

UNIT



List of unit numbers with this unit plan:

### VIEWS

Waterfront, Hartland, Downtown  
C1506, C1606, C1706, C1806, C1906, C2006, C2106, C2206, C2406

Waterfront, Hartland, Downtown, Burj Khalifa  
C2506, C2606, C2706, C2806, C2906, C3006, C3106, C3206, C3306, C3406, C3506, C3606, C3706, C3806, C3906, C4006, C4106



# 3 BEDROOM APARTMENT

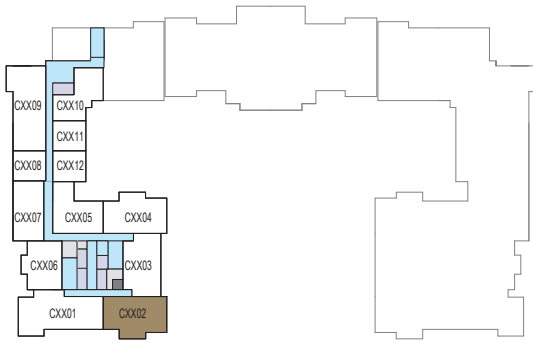
TYPE A (with Maid Room + Balcony)

## TOTAL SALEABLE AREA

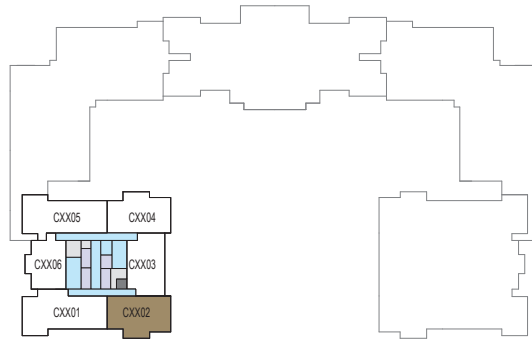
SUITE = 1,476.70 SQ.FT.

BALCONY = 140.15 SQ.FT.

TOTAL = 1,616.85 SQ.FT.



LEVEL 07-12



LEVEL 15-22 & 24-41



UNIT



List of unit numbers with this unit plan:

### VIEWS

Waterfront, Amenities

C0702, C0802, C0902, C1002, C1102, C1202

Waterfront, Amenities, Hartland, Ras Al Khor

C1502

Waterfront, Hartland, Ras Al Khor

C1602, C1702, C1802, C1902, C2002, 2102, C2202, C2402, C2502, C2602, C2702, C2802

C2902, C3002, C3102, C3202, C3302, C3402, C3502, C3602, C3702, C3802, C3902, C4002, C4102



# 3 BEDROOM APARTMENT

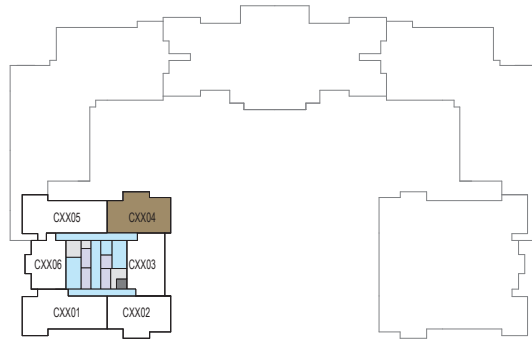
TYPE A (with Maid Room + Balcony) - VARIANT 3

**TOTAL SALEABLE AREA**

SUITE = 1,475.30 SQ.FT.  
BALCONY = 140.04 SQ.FT.  
TOTAL = 1,615.34 SQ.FT.



LEVEL 07-12



LEVEL 15-22 & 24-41



UNIT



List of unit numbers with this unit plan:

## VIEWS

Waterfront, Amenities

C0704, C0804, C0904, C1004, C1104, C1204

Waterfront, Amenities, Hartland, Downtown, Ras Al Khor

C1504

Waterfront, Hartland, Ras Al Khor, Downtown

C1604, C1704, C1804, C1904, C2004, C2104, C2204, C2404

Waterfront, Hartland, Ras Al Khor, Downtown, Burj Khalifa

C2504, C2604, C2704, C2804, C2904, C3004, C3104, C3204, C3304, C3404, C3504, C3604, C3704, C3804, C3904, C4004, C4104



# 3 BEDROOM APARTMENT

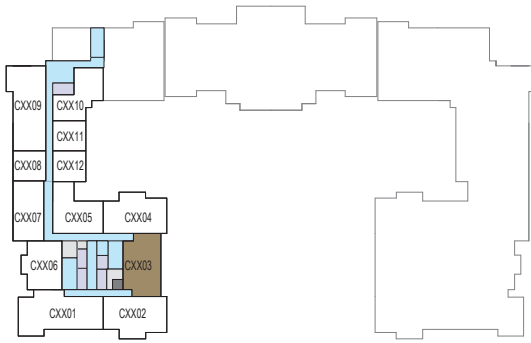
TYPE B (with Maid Room + 2 Balconies)

**TOTAL SALEABLE AREA**

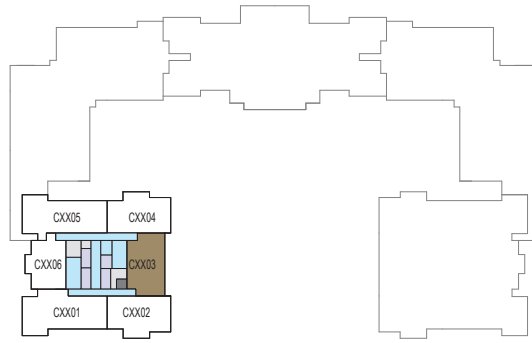
SUITE = 1,557.11 SQ.FT.

BALCONY = 131.32 SQ.FT.

TOTAL = 1,688.43 SQ.FT.



LEVEL 07-12



LEVEL 15-22 & 24-41



UNIT



List of unit numbers with this unit plan:

## VIEWS

Waterfront, Amenities

C0703, C0803, C0903, C1003, C1103, C1203

Waterfront, Amenities, Hartland, Ras Al Khor

C1503

Waterfront, Hartland, Ras Al Khor

C1603, C1703, C1803, C1903, C2003, C2103, C2203, C2403, C2503, C2603, C2703, C2803, C2903, C3003, C3103, C3203, C3303, C3403, C3503, C3603, C3703, C3803, C3903, C4003, C4103

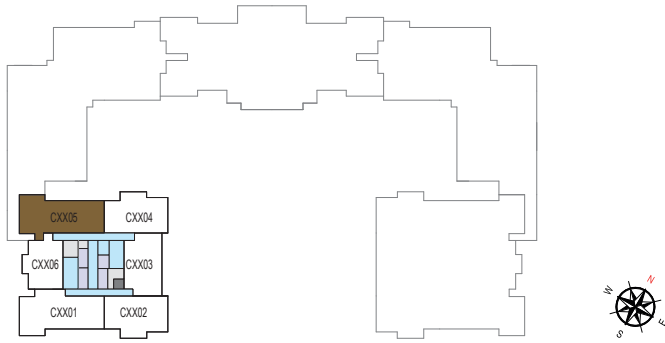


# 4 BEDROOM APARTMENT

TYPE A (with Maid Room + Balcony) - VARIANT 1

**TOTAL SALEABLE AREA**

SUITE = 1,999.61 SQ.FT.  
BALCONY = 206.24 SQ.FT.  
TOTAL = 2,205.85 SQ.FT.



LEVEL 15-22 & 24-41

■ UNIT



List of unit numbers with this unit plan:

## VIEWS

Waterfront, Amenities, Hartland, Downtown  
C1505

Waterfront, Hartland, Downtown  
C1605, C1705, C1805, C1905, C2005, C2105, C2205, C2405

Waterfront, Hartland, Downtown, Burj Khalifa  
C2505, C2605, C2705, C2805, C2905, C3005, C3105, C3205, C3305, C3405, C3505,  
C3605, C3705, C3805, C3905, C4005, C4105



# 4 BEDROOM APARTMENT

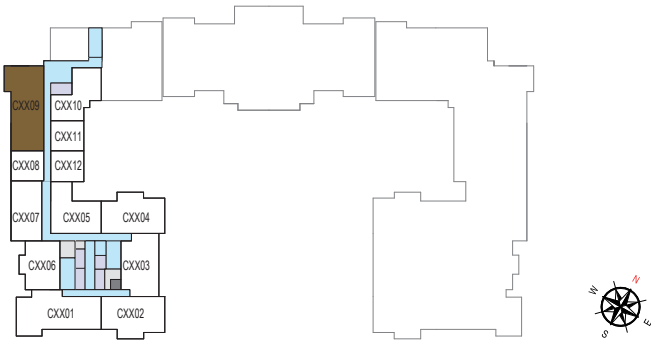
TYPE B (with Maid Room + Balcony) - VARIANT 1

## TOTAL SALEABLE AREA

SUITE = 1,940.63 SQ.FT.

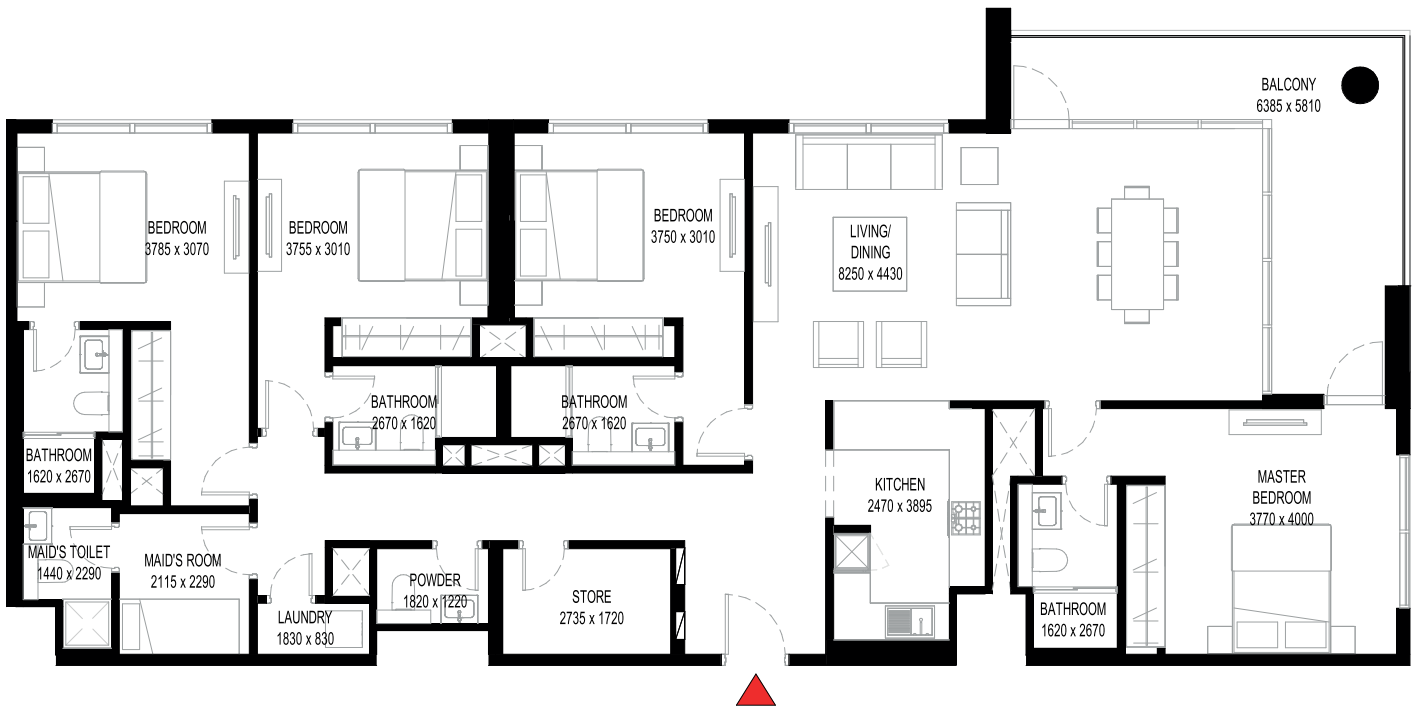
BALCONY = 201.18 SQ.FT.

TOTAL = 2,141.81 SQ.FT.



LEVEL 07-12

UNIT



List of unit numbers with this unit plan:

### VIEWS

Waterfront, Hartland  
C0709, C0809, C0909, C1009

Waterfront, Hartland, Downtown  
C1109, C1209



# 4 BEDROOM APARTMENT

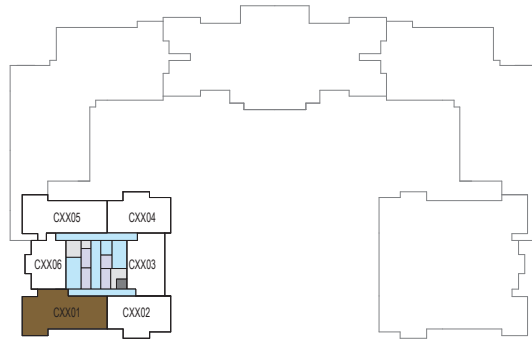
TYPE C (with Maid Room + Balcony) - VARIANT 1

**TOTAL SALEABLE AREA**

SUITE = 2,140.19 SQ.FT.  
BALCONY = 204.08 SQ.FT.  
TOTAL = 2,344.27 SQ.FT.



LEVEL 07-12



LEVEL 15-22 & 24-41



UNIT



List of unit numbers with this unit plan:

## VIEWS

Waterfront, Hartland  
C0701, C0801, C0901, C1001

Waterfront, Hartland, Downtown  
C1101, C1201, C1501, C1601, C1701, C1801, C1901, C2001, C2101, C2201, C2401

Waterfront, Hartland, Downtown, Burj Khalifa  
C2501, C2601, C2701, C2801, C2901, C3001, C3101, C3201, C3301, C3401, C3501, C3601, C3701, C3801, C3901, C4001, C4101





**TANAMI**  
P R O P E R T I E S

**CONTACT US**

+971 4 248 3400 | +971 55 162 3236

**Email Us**

info@tanamiproperties.ae

**For More Info...**

[www.tanamiproperties.com/Projects/Crest-Grande-Tower-C](http://www.tanamiproperties.com/Projects/Crest-Grande-Tower-C)



**ADDRESS**

Office 3405, Marina Plaza,  
Al Marsa Street, Dubai Marina, UAE