

RESIDENCE 14 G+12

WATER HAS A NEW FRONT



MOHAMMED BIN RASHID
AL MAKTOUM CITY
DISTRICT ONE



G+12 Apartments - Residence 14

12th Floor

1, 2 and 3 Bedroom Apartments



**MOHAMMED BIN RASHID
AL MAKTOUM CITY**

DISTRICT ONE

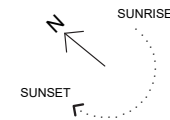
MEYDAN ONE

MEYDAN HOTEL

DUBAI SKYLINE



- 3 BEDROOM
- 2 BEDROOM
- 1 BEDROOM
- CRYSTAL LAGOON



Key Section

G+12 Apartments - Residence 14

5th to 12th Floor

1 and 2 Bedroom Apartments



MOHAMMED BIN RASHID
AL MAKTOUM CITY

DISTRICT ONE

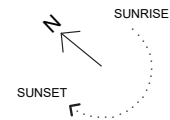
MEYDAN ONE

DUBAI SKYLINE

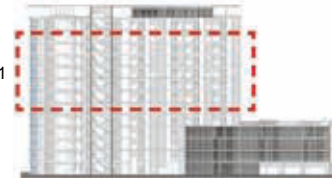
MEYDAN HOTEL



2 BEDROOM
 1 BEDROOM
 CRYSTAL LAGOON



05-11



Key Section

G+12 Apartments - Residence 14

4th Floor

1 and 2 Bedroom Apartments



**MOHAMMED BIN RASHID
AL MAKTOUM CITY**

DISTRICT ONE

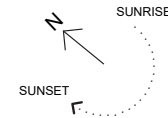
MEYDAN ONE

MEYDAN HOTEL

DUBAI SKYLINE



 2 BEDROOM
 1 BEDROOM
 CRYSTAL LAGOON



Key Section

G+12 Apartments - Residence 14

3rd Floor

1 and 2 Bedroom Apartments



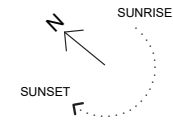
MOHAMMED BIN RASHID
AL MAKTOUN CITY

DISTRICT ONE

MEYDAN ONE

MEYDAN HOTEL

DUBAI SKYLINE



Key Section

G+12 Apartments - Residence 14

1st & 2nd Floor

1 and 2 Bedroom Apartments



MOHAMMED BIN RASHID
AL MAKTOUN CITY

DISTRICT ONE

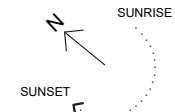
MEYDAN ONE

MEYDAN HOTEL

DUBAI SKYLINE



 2 BEDROOM
 1 BEDROOM
 CRYSTAL LAGOON



01 & 02



Key Section



**MOHAMMED BIN RASHID
AL MAKTOUM CITY**

DISTRICT ONE

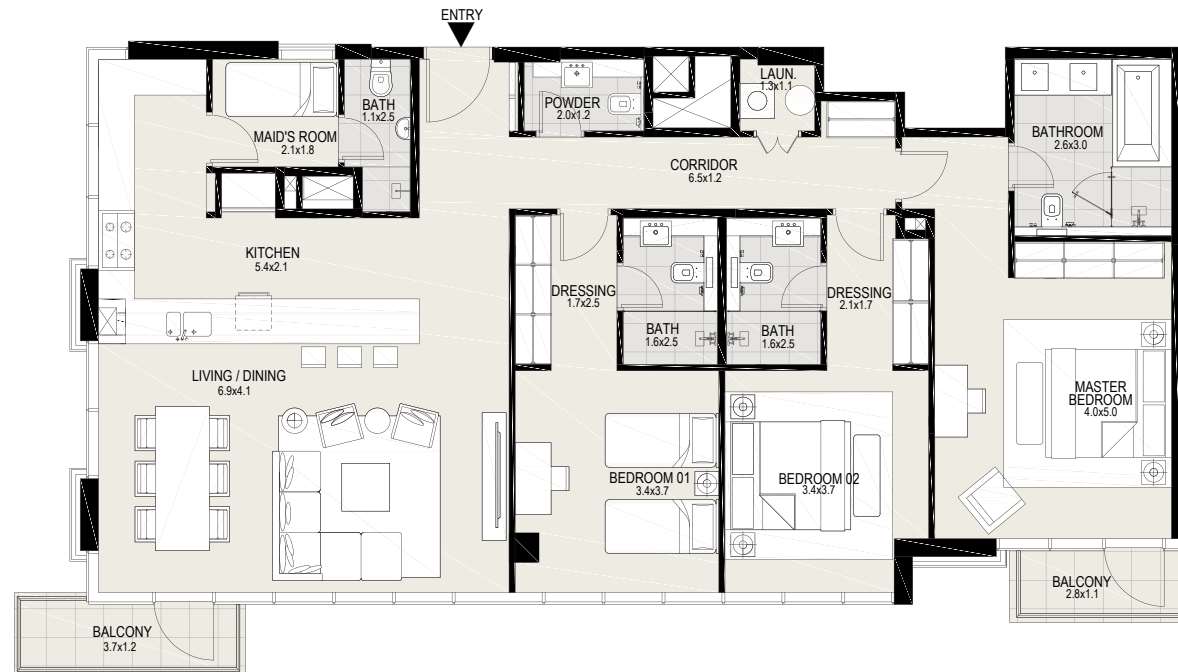
3 BEDROOM

12TH FLOOR

Suite Area: 1683 sq. ft

Balcony Area: 76 sq. ft

Total Area: 1759 sq. ft



**G+12
KEYPLAN**



**MOHAMMED BIN RASHID
AL MAKTOUM CITY**

DISTRICT ONE

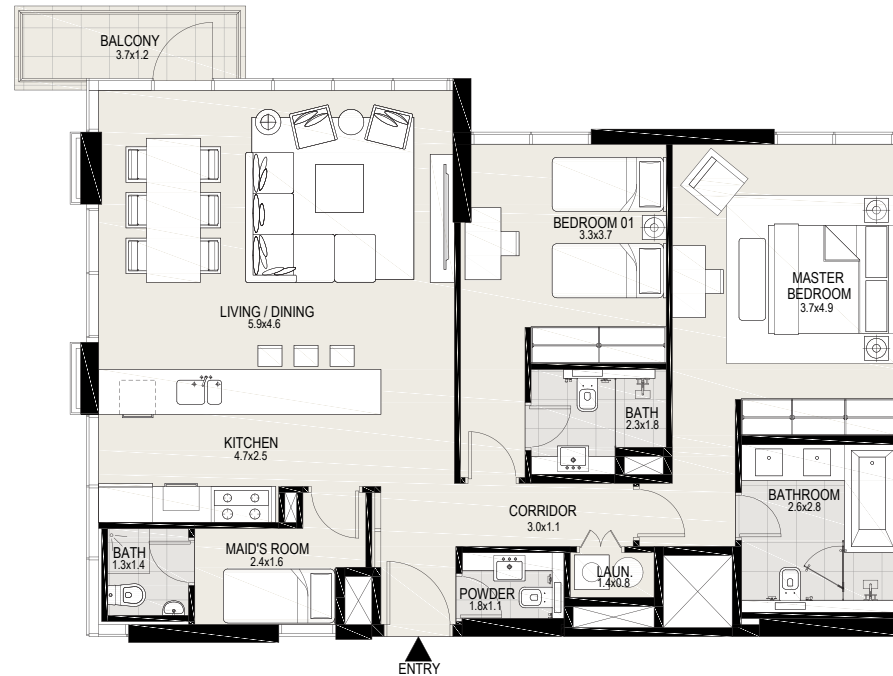
2 BEDROOM

5TH TO 12TH FLOOR

Suite Area: 1152 - 1233 sq. ft

Balcony Area: 33 - 45 sq. ft

Total Area: 1185 - 1277 sq. ft



**G+12
KEYPLAN**



MOHAMMED BIN RASHID
AL MAKTOUM CITY

DISTRICT ONE

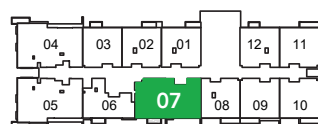
2 BEDROOM

5TH TO 12TH FLOOR

Suite Area: 1152 - 1233 sq. ft

Balcony Area: 33 - 45 sq. ft

Total Area: 1185 - 1277 sq. ft



G+12
KEYPLAN



**MOHAMMED BIN RASHID
AL MAKTOUM CITY**

DISTRICT ONE

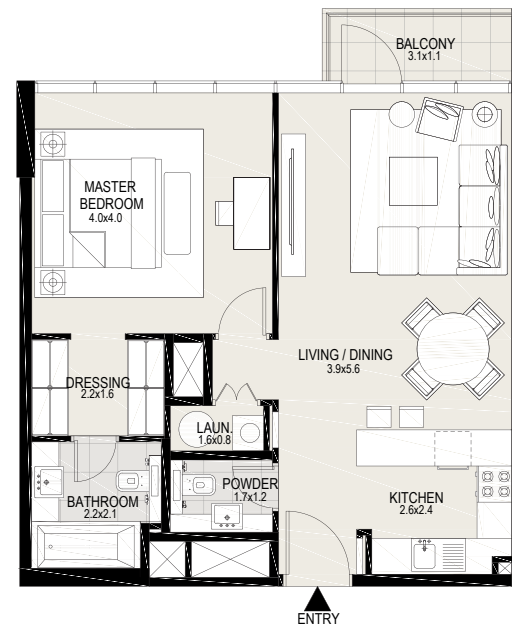
1 BEDROOM

5TH TO 12TH FLOOR

Suite Area: 685 - 744 sq. ft

Balcony Area: 26 - 214 sq. ft

Total Area: 712 - 931 sq. ft



**G+12
KEYPLAN**



**MOHAMMED BIN RASHID
AL MAKTOUM CITY**

DISTRICT ONE

1 BEDROOM

5TH TO 12TH FLOOR

Suite Area: 685 - 744 sq. ft

Balcony Area: 26 - 214 sq. ft

Total Area: 712 - 931 sq. ft



G+12
KEYPLAN



MOHAMMED BIN RASHID
AL MAKTOUM CITY

DISTRICT ONE

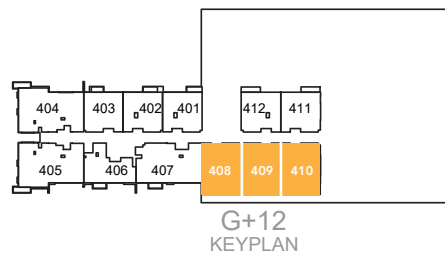
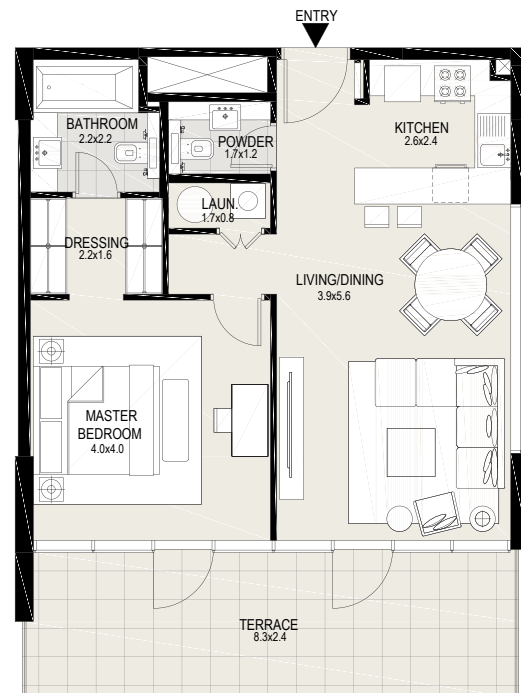
1 BEDROOM

5TH TO 12TH FLOOR

Suite Area: 685 - 744 sq. ft

Balcony Area: 26 - 214 sq. ft

Total Area: 712 - 931 sq. ft



G+12
KEYPLAN

G+12 Apartments - Residence 14

Ground Floor

1 and 2 Bedroom Apartments



MOHAMMED BIN RASHID
AL MAKTUUM CITY

DISTRICT ONE

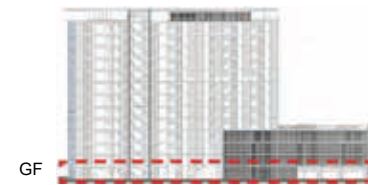
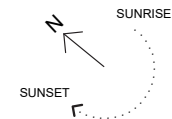
MEYDAN ONE



DUBAI SKYLINE

MEYDAN HOTEL

- 2 BEDROOM
- 1 BEDROOM
- CRYSTAL LAGOON



Key Section



MOHAMMED BIN RASHID
AL MAKTOUM CITY

DISTRICT ONE

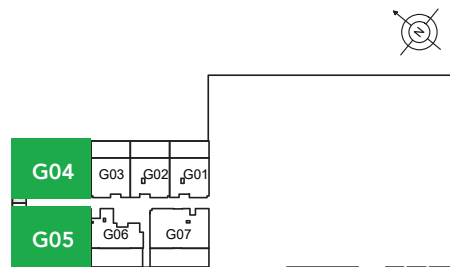
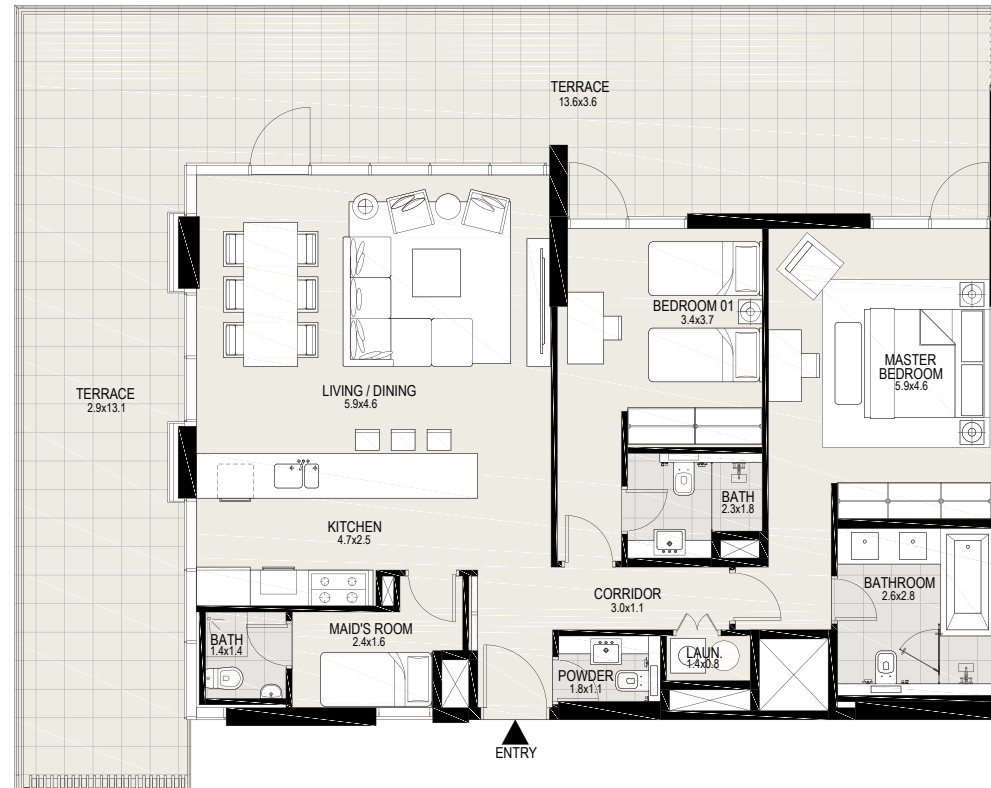
2 BEDROOM

GROUND FLOOR

Suite Area: 1073 - 1231 sq. ft

Balcony Area: 518 - 920 sq. ft

Total Area: 1591 - 2150 sq. ft



G+12
KEYPLAN



MOHAMMED BIN RASHID
AL MAKTOUM CITY

DISTRICT ONE

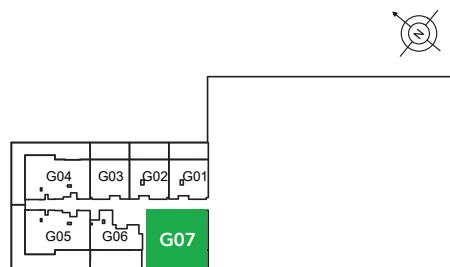
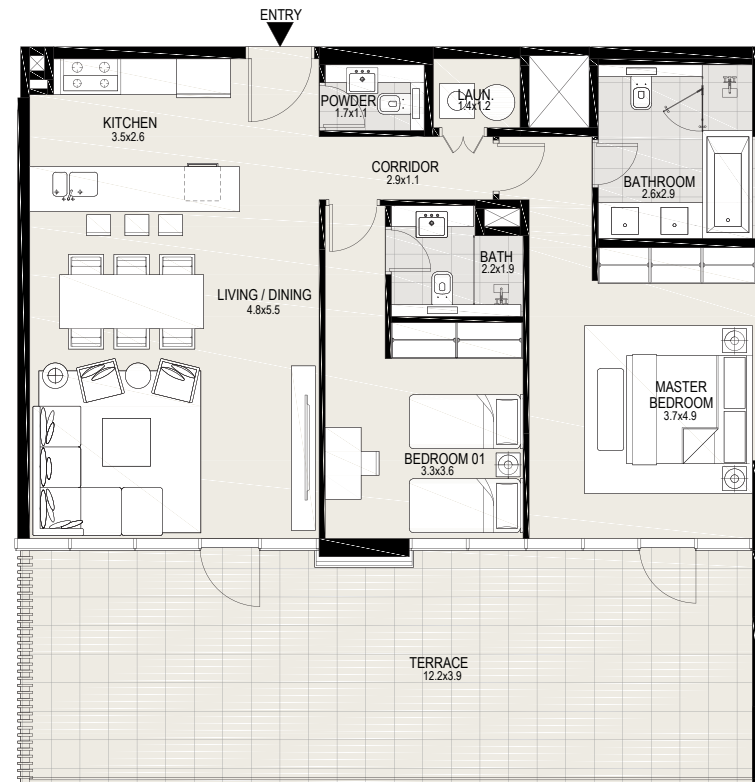
2 BEDROOM

GROUND FLOOR

Suite Area: 1073 - 1231 sq. ft

Balcony Area: 518 - 920 sq. ft

Total Area: 1591 - 2150 sq. ft



G+12
KEYPLAN



MOHAMMED BIN RASHID
AL MAKTOUM CITY

DISTRICT ONE

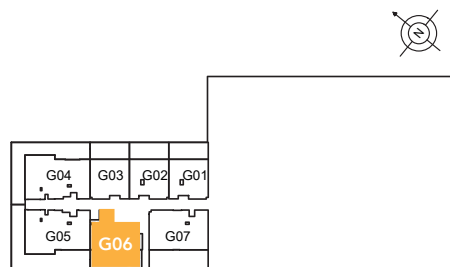
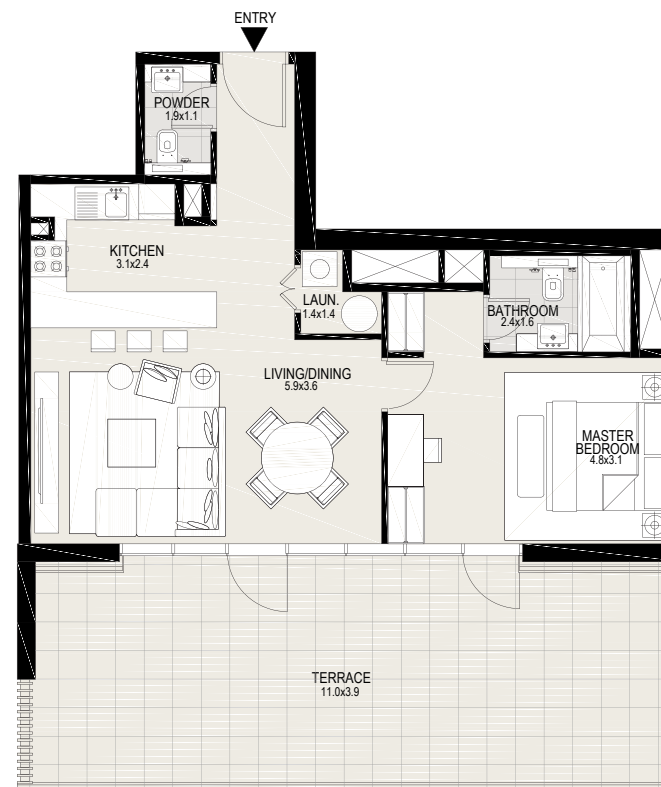
1 BEDROOM

GROUND FLOOR

Suite Area: 686 - 711 sq. ft

Balcony Area: 311 - 455 sq. ft

Total Area: 1015 - 1141 sq. ft



G+12
KEYPLAN



MOHAMMED BIN RASHID
AL MAKTOUM CITY

DISTRICT ONE

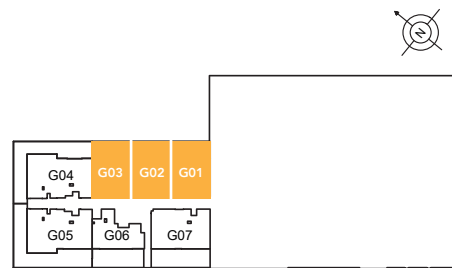
1 BEDROOM

GROUND FLOOR

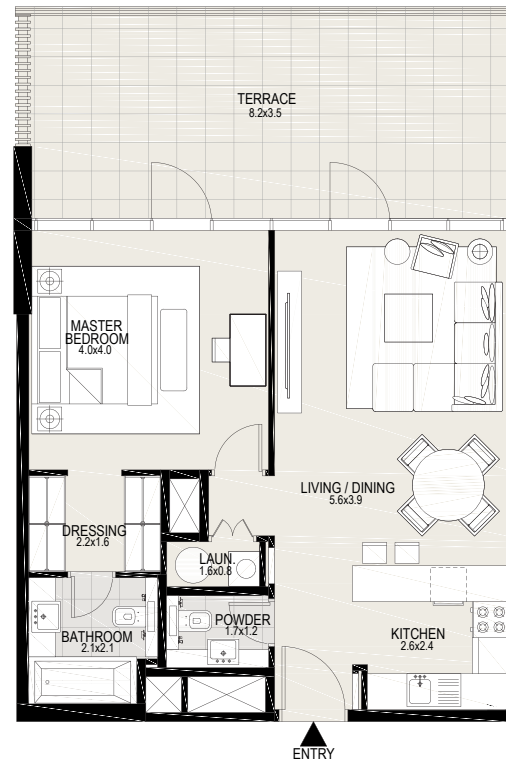
Suite Area: 686 - 711 sq. ft

Balcony Area: 311 - 455 sq. ft

Total Area: 1015 - 1141 sq. ft



G+12
KEYPLAN



PAYMENT PLAN

BOOKING AMOUNT*

10%

**Upon
Booking***

1ST INSTALMENT*

5%

**20%
Construction**

2ND INSTALMENT*

5%

**30%
Construction**

3RD INSTALMENT*

10%

**40%
Construction**

4TH INSTALMENT*

10%

**50%
Construction**

5TH INSTALMENT*

10%

**60%
Construction**

FINAL INSTALMENT*

50%

**On
Completion**