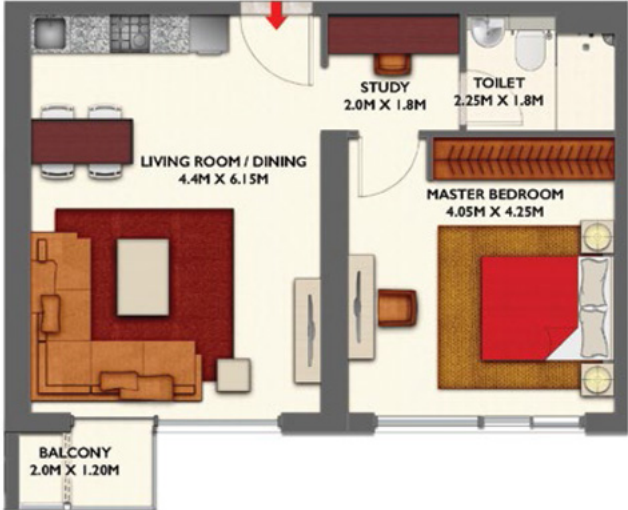


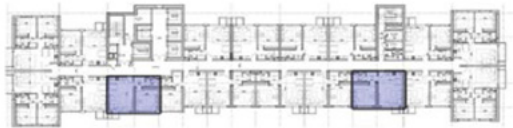
# Dragon Towers

## I BEDROOM

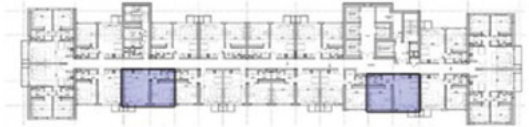
### TYPE C APARTMENT - TYPICAL FLOOR PLAN



Apartment area:	58.04 sq.m	624.74 sq.ft
Balcony area:	2.81 sq.m	30.25 sq.ft
Total area:	60.85 sq.m	654.98 sq.ft



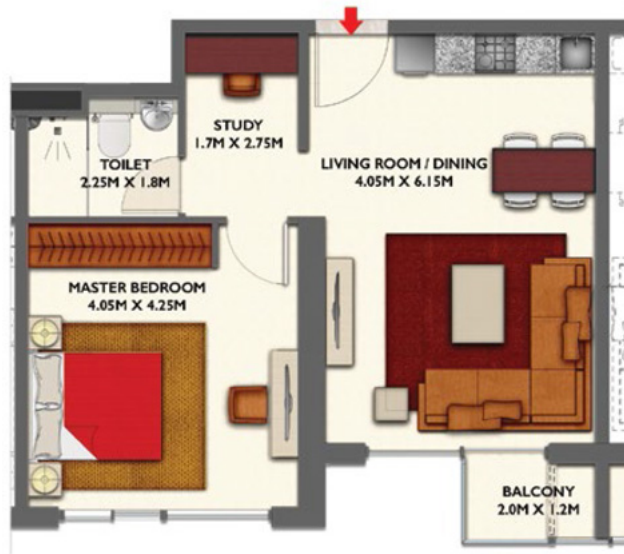
TOWER A KEY PLAN



TOWER B KEY PLAN

# I BEDROOM

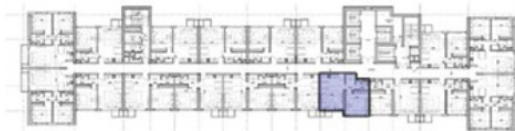
## TYPE D APARTMENT - TYPICAL FLOOR PLAN



Apartment area:	57.07 sq.m	614.30 sq.ft
Balcony area:	2.82 sq.m	30.35 sq.ft
Total area:	59.89 sq.m	644.65 sq.ft



TOWER A KEY PLAN



TOWER B KEY PLAN

# I BEDROOM

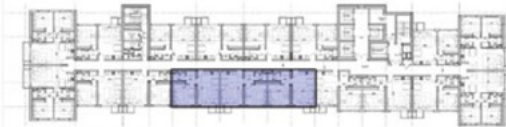
## TYPE E APARTMENT - TYPICAL FLOOR PLAN



Apartment area:	55.18 sq.m	593.95 sq.ft
Balcony area:	2.82 sq.m	30.35 sq.ft
Total area:	58 sq.m	624.31 sq.ft



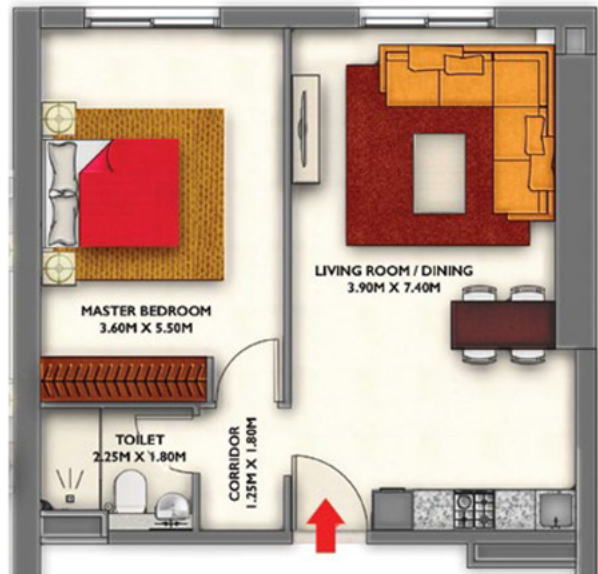
TOWER A KEY PLAN



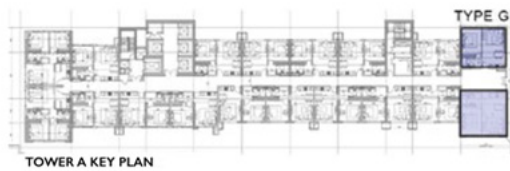
TOWER B KEY PLAN

# I BEDROOM

## TYPE G APARTMENT - TYPICAL FLOOR PLAN

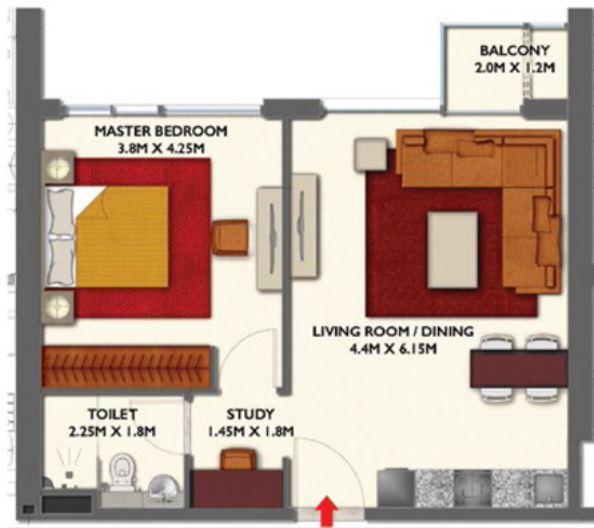


Apartment area:	77.81 sq.m	837.54 sq.ft
Balcony area:	-	-
Total area:	77.81 sq.m	837.54 sq.ft



# I BEDROOM

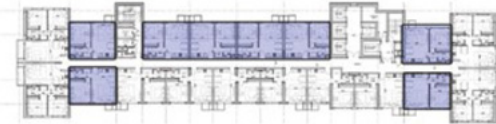
## TYPE B APARTMENT - TYPICAL FLOOR PLAN



Apartment area:	55.11 sq.m	593.20 sq.ft
Balcony area:	2.94 sq.m	31.65 sq.ft
Total area:	58.05 sq.m	624.84 sq.ft



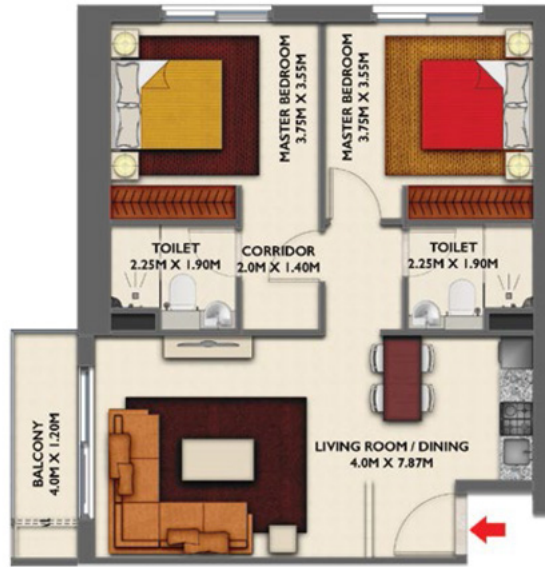
TOWER A KEY PLAN



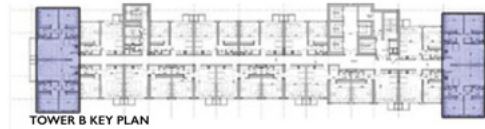
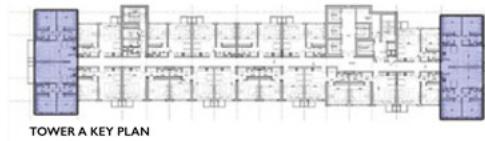
TOWER B KEY PLAN

# 2 BEDROOM

## TYPE A APARTMENT - TYPICAL FLOOR PLAN

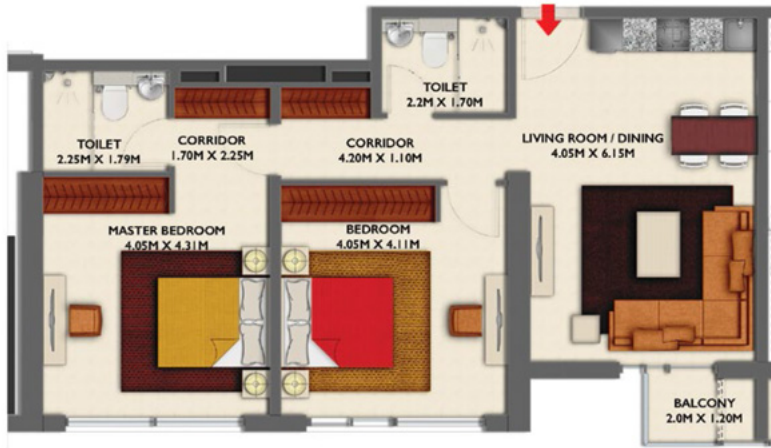


Apartment area:	77.82 sq.m	837.65 sq.ft
Balcony area:	5.31 sq.m	59.16 sq.ft
Total area:	83.23 sq.m	895.88 sq.ft



# 2 BEDROOM

## TYPE F APARTMENT - TYPICAL FLOOR PLAN



Apartment area:	84.25 sq.m	906.86 sq.ft
Balcony area:	2.81 sq.m	30.25 sq.ft
Total area:	87.06 sq.m	937.11 sq.ft



TOWER A KEY PLAN

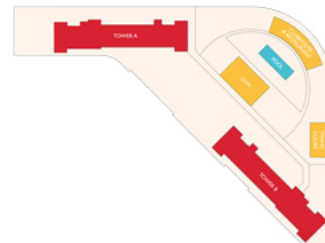


TOWER B KEY PLAN

### GROUND FLOOR PLAN

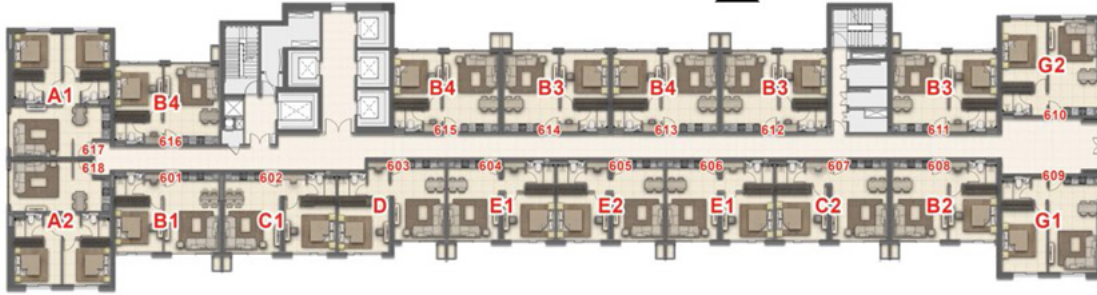


### PODIUM FLOOR PLAN

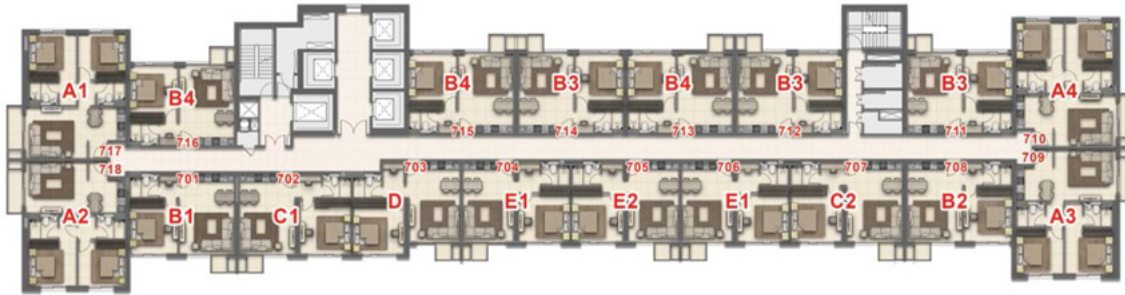


TOWER A

DUBAI SKYLINE VIEW

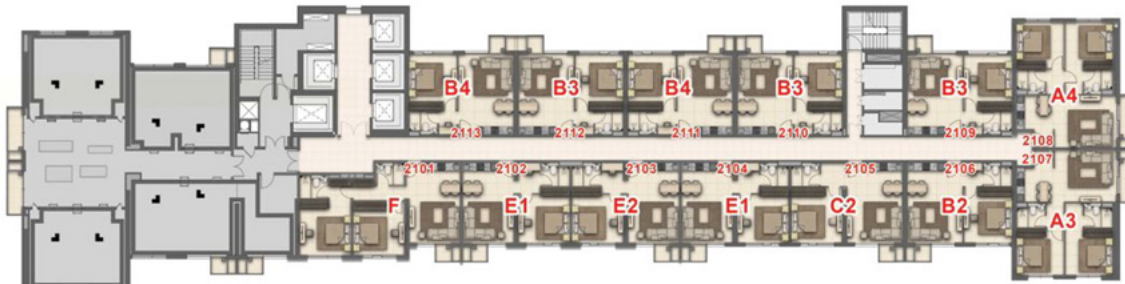


6TH FLOOR PLAN



TYPICAL FLOOR PLAN 7<sup>TH</sup> - 20<sup>TH</sup> AND 22<sup>ND</sup> - 37<sup>TH</sup>

POOL & DRAGON CITY VIEW



21ST FLOOR PLAN

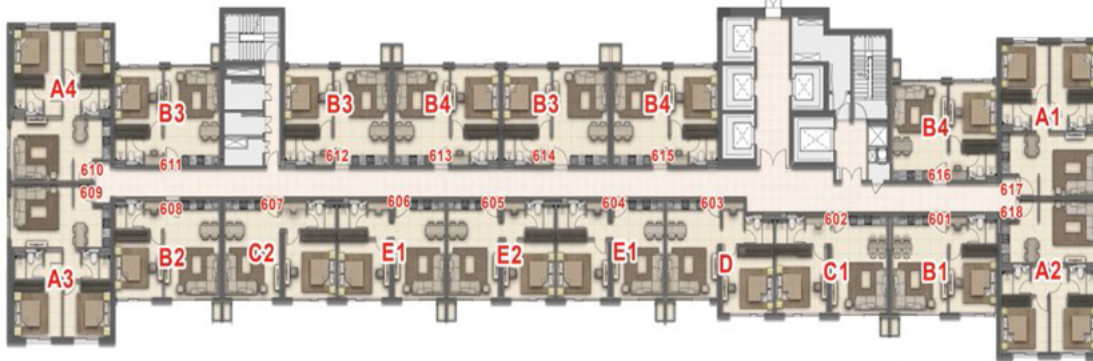
INTERNATIONAL CITY VIEW

POOL & DRAGON CITY VIEW

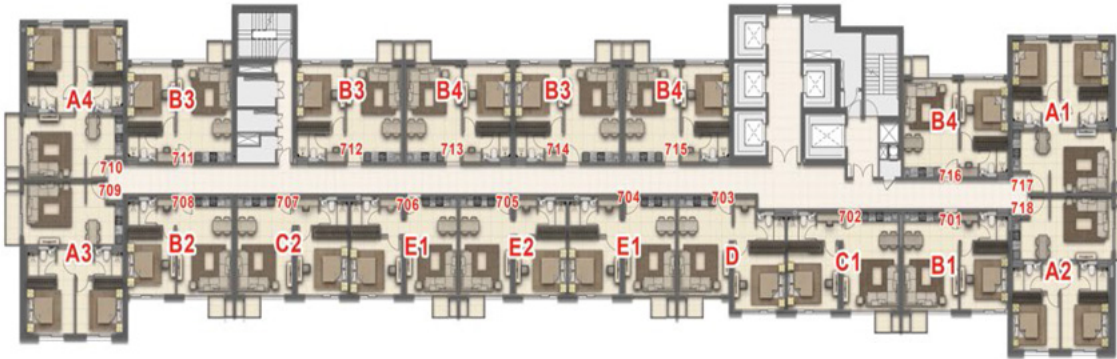


# TOWER B

POOL & DRAGON CITYVIEW

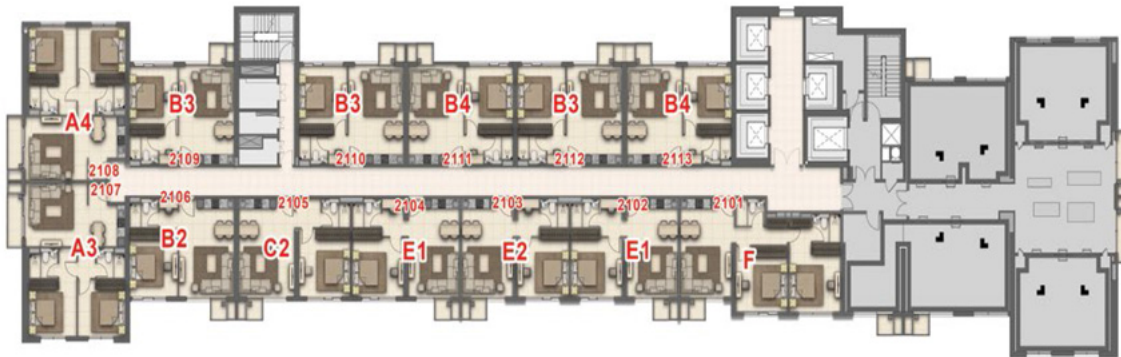


6TH FLOOR PLAN



TYPICAL FLOOR PLAN 7<sup>TH</sup> - 20<sup>TH</sup> AND 22<sup>ND</sup> - 37<sup>TH</sup>

INTERNATIONAL CITY & WARSAW LAKE VIEW



21ST FLOOR PLAN

INTERNATIONAL CITY & DUBAI SKYLINEVIEW