

Harmony Villas Phase 3 - Villa

Floorplan Garden Suite

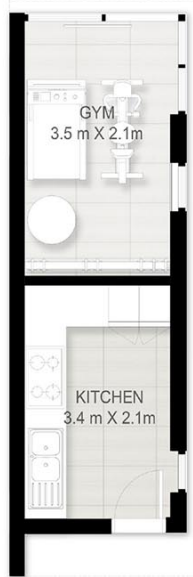
4 & 5 bedroom villas

Total Area Size
19 SQ.M.
205 SQ.FT.

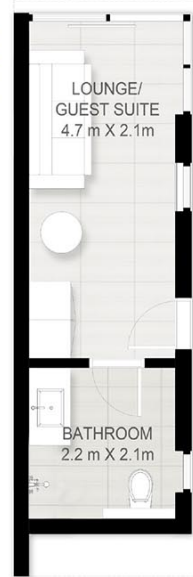
Layout 1
CREATIVE



Layout 2
WELLNESS



Layout 3
CANVAS



Layout 4
CULINARY



Disclaimer: The plans, drawings, images, dimensions, area and all information provided herein are indicative, provided for illustrative purposes.

Floorplan Garden Suite

5 bedroom (Large)
& 6 bedroom villas

Total Area Size
45 SQ.M.
484 SQ.FT.

Layout 1
WORK SUITE



Layout 2
PLAY SUITE



Layout 3
TRAIN SUITE



Disclaimer: The plans, drawings, images, dimensions, area and all information provided herein are indicative, provided for illustrative purposes.



Floorplan 5 Bedroom Villa (Large - Type A) + Garden Suite

Total Area Size
527 SQ.M.
5,677 SQ.FT.

-  All en-suite bathrooms
-  Separate powder room
-  Maid and driver rooms
-  Marble flooring

Select from 3 Garden Suite Options
- Work - Play - Train

harmony III | تلال الغاف Tital Al Ghaf

Ground Floor



First Floor



Disclaimer: The plans, drawings, images, dimensions, area and all information provided herein are indicative, provided for illustrative purposes.



Floorplan 5 Bedroom Villa (Large - Type B) + Garden Suite

Total Area Size
527 SQ.M.
5,677 SQ.FT.

-  All en-suite bathrooms
-  Separate powder room
-  Maid and driver rooms
-  Marble flooring

Select from 3 Garden Suite Options
- Work - Play - Train

harmony III | تلال الغاف Tital Al Ghaf

Ground Floor



First Floor



Disclaimer: The plans, drawings, images, dimensions, area and all information provided herein are indicative, provided for illustrative purposes.



Floorplan 6 Bedroom Villa + Garden Suite

Total Area Size
605 SQ.M.
6,515 SQ.FT.

- All en-suite bathrooms
- Separate powder room
- Maid and driver rooms
- Marble flooring

Select from 3 Garden Suite Options
- Work - Play - Train

harmony III | تلال الغاف Tital Al Ghaf

Ground Floor



First Floor



Disclaimer: The plans, drawings, images, dimensions, area and all information provided herein are indicative, provided for illustrative purposes.



Floorplan 4 Bedroom Villa + Garden Suite

Total Area Size
373 SQ.M.
4,016 SQ.FT.

- All en-suite bathrooms
- Separate powder room
- Maid and driver rooms

Select from 4 Garden Suite Options
- Creative - Wellness - Canvas - Culinary

harmony III | تلال الغاف Tital Al Ghaf

Ground Floor



First Floor

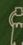


Disclaimer: The plans, drawings, images, dimensions, area and all information provided herein are indicative, provided for illustrative purposes.

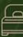


Floorplan 5 Bedroom Villa + Garden Suite

Total Area Size
416 SQ.M.
4,477 SQ.FT.

 All-en-suite
bathrooms

 Separate
powder room

 Maid and
driver rooms

Select from 4 Garden Suite Options
- Creative - Wellness - Canvas - Culinary

harmony III  تلال الغاف
Tilal Al Ghaif

Ground Floor



First Floor



Disclaimer: The plans, drawings, images, dimensions, area and all information provided herein are indicative, provided for illustrative purposes.