

Karma Residences - Apartment

Floor Plan
Typical - 1st to 10th



V

Floor Plan
Ground



Floor Plan Roof



VISION KARMA

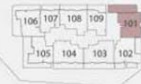
LIWAN DUBAI

UNIT - 101 2 BEDROOM LEVEL-01

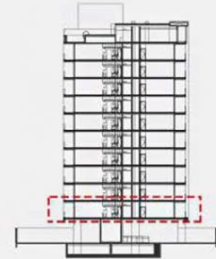
Internal Living Area	888.02 sq.ft.
Outdoor Living Area	355.53 sq.ft.
Total Living Area	1243.55 sq.ft.



TYPICAL FLOOR PLAN 1ST - 10TH FLOOR



KEY SECTION



DISCLAIMER:

All measurements are indicative and are for marketing purposes only. All efforts have been made to ensure their accuracy, however these layouts are subject to change at the discretion of the developer and should not be relied upon as final. The actual area may vary from the stated area and the developer reserves the right to make the revisions/alterations, at its absolute discretion, without any liability whatsoever.

VISION KARMA

LIWAN DUBAI

UNIT - 102

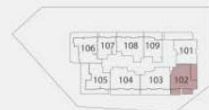
2 BEDROOM

LEVEL-01

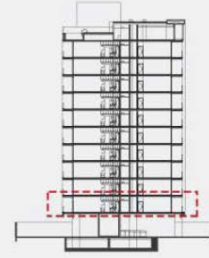
Internal Living Area	921.18 sq.ft.
Outdoor Living Area	353.81 sq.ft.
Total Living Area	1274.99 sq.ft.



TYPICAL FLOOR PLAN
1ST - 10TH
FLOOR



KEY SECTION



DISCLAIMER:

All measurements are indicative and are for marketing purposes only. All efforts have been made to ensure their accuracy, however these layouts are subject to change at the discretion of the developer and should not be relied upon as final. The actual area may vary from the stated area and the developer reserves the right to make the revisions/alterations, at its absolute discretion, without any liability whatsoever



VISION KARMA

LIWAN DUBAI

UNIT - 103

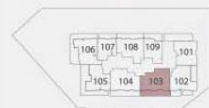
2 BEDROOM

LEVEL-01

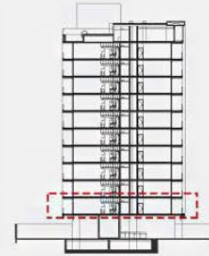
Internal Living Area	985.87 sq.ft.
Outdoor Living Area	287.29 sq.ft.
Total Living Area	1273.16 sq.ft.



TYPICAL FLOOR PLAN
1ST - 10TH
FLOOR



KEY SECTION



DISCLAIMER:

All measurements are indicative and are for marketing purposes only. All efforts have been made to ensure their accuracy, however these layouts are subject to change at the discretion of the developer and should not be relied upon as final. The actual area may vary from the stated area and the developer reserves the right to make the revisions/alterations, at its absolute discretion, without any liability whatsoever



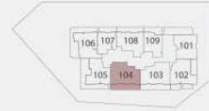
VISION
KARMA
 LIWAN DUBAI

UNIT - 104
 2 BEDROOM
 LEVEL-01

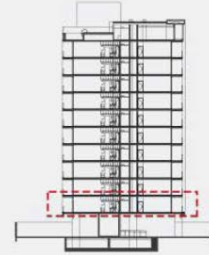
Internal Living Area	1021.50 sq.ft.
Outdoor Living Area	283.09 sq.ft.
Total Living Area	1304.59 sq.ft.



TYPICAL FLOOR PLAN
 1ST - 10TH
 FLOOR



KEY SECTION



DISCLAIMER:

All measurements are indicative and are for marketing purposes only. All efforts have been made to ensure their accuracy, however these layouts are subject to change at the discretion of the developer and should not be relied upon as final. The actual area may vary from the stated area and the developer reserves the right to make the revisions/alterations, at its absolute discretion, without any liability whatsoever



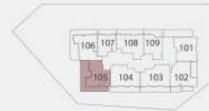
VISION
KARMA
 LIWAN DUBAI

UNIT - 105
 2 BEDROOM
 LEVEL-01

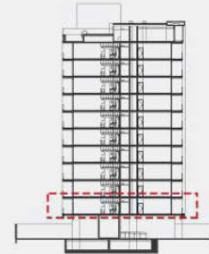
Internal Living Area	876.29 sq.ft.
Outdoor Living Area	461.88 sq.ft.
Total Living Area	1338.17 sq.ft.



TYPICAL FLOOR PLAN
 1ST - 10TH
 FLOOR



KEY SECTION



DISCLAIMER:

All measurements are indicative and are for marketing purposes only. All efforts have been made to ensure their accuracy, however these layouts are subject to change at the discretion of the developer and should not be relied upon as final. The actual area may vary from the stated area and the developer reserves the right to make the revisions/alterations, at its absolute discretion, without any liability whatsoever



VISION KARMA

LIWAN DUBAI

UNIT - 106

2 BEDROOM

LEVEL-01

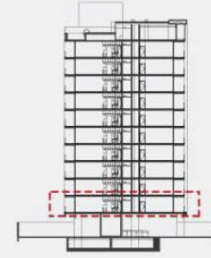
Internal Living Area	905.14 sq.ft.
Outdoor Living Area	535.07 sq.ft.
Total Living Area	1440.21 sq.ft.



TYPICAL FLOOR PLAN
1ST - 10TH
FLOOR



KEY SECTION



DISCLAIMER:

All measurements are indicative and are for marketing purposes only. All efforts have been made to ensure their accuracy, however these layouts are subject to change at the discretion of the developer and should not be relied upon as final. The actual area may vary from the stated area and the developer reserves the right to make the revisions/alterations, at its absolute discretion, without any liability whatsoever



VISION KARMA

LIWAN DUBAI

UNIT - 107

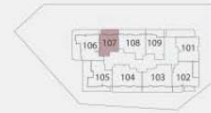
1 BEDROOM

LEVEL-01

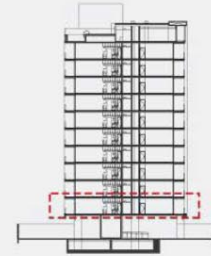
Internal Living Area	621.72 sq.ft.
Outdoor Living Area	154.14 sq.ft.
Total Living Area	775.86 sq.ft.



TYPICAL FLOOR PLAN
1ST - 10TH
FLOOR



KEY SECTION



DISCLAIMER:

All measurements are indicative and are for marketing purposes only. All efforts have been made to ensure their accuracy, however these layouts are subject to change at the discretion of the developer and should not be relied upon as final. The actual area may vary from the stated area and the developer reserves the right to make the revisions/alterations, at its absolute discretion, without any liability whatsoever



VISION KARMA

LIWAN DUBAI

UNIT - 108

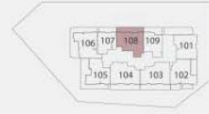
2 BEDROOM

LEVEL-01

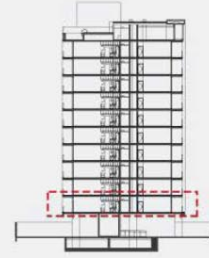
Internal Living Area	919.88 sq.ft.
Outdoor Living Area	242.62 sq.ft.
Total Living Area	1162.50 sq.ft.



TYPICAL FLOOR PLAN
1ST - 10TH
FLOOR



KEY SECTION



DISCLAIMER:

All measurements are indicative and are for marketing purposes only. All efforts have been made to ensure their accuracy, however these layouts are subject to change at the discretion of the developer and should not be relied upon as final. The actual area may vary from the stated area and the developer reserves the right to make the revisions/alterations, at its absolute discretion, without any liability whatsoever



VISION KARMA

LIWAN DUBAI

UNIT - 109

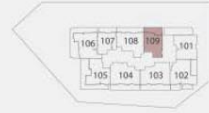
1 BEDROOM

LEVEL-01

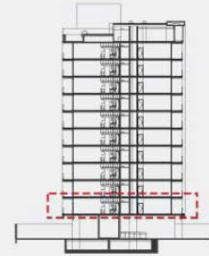
Internal Living Area	688.03 sq.ft.
Outdoor Living Area	199.78 sq.ft.
Total Living Area	887.81 sq.ft.



TYPICAL FLOOR PLAN
1ST - 10TH
FLOOR



KEY SECTION



DISCLAIMER:

All measurements are indicative and are for marketing purposes only. All efforts have been made to ensure their accuracy, however these layouts are subject to change at the discretion of the developer and should not be relied upon as final. The actual area may vary from the stated area and the developer reserves the right to make the revisions/alterations, at its absolute discretion, without any liability whatsoever



CONTACT US



Call Us [+971 4 248 3400](tel:+97142483400)



WhatsApp [+971 55 162 3236](https://wa.me/971551623236)

TANAMI
P R O P E R T I E S