

Lyvia by Palace at Dubai Creek Harbour - Apartment

LYVIA By PALACE

DUBAI CREEK HARBOUR

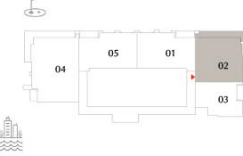
2 BEDROOM TYPE-1

UNIT P202		
SUITE AREA	1055.29 SQ.FT.	98.04 SQ.M.
BALCONY AREA	177.60 SQ.FT.	16.50 SQ.M.
TOTAL AREA	1232.89 SQ.FT.	114.54 SQ.M.
UNIT 102, 202-2202 & 2402-4702, 2302		
SUITE AREA	1062.40 SQ.FT.	98.70 SQ.M.
BALCONY AREA	179.00 SQ.FT.	16.63 SQ.M.
TOTAL AREA	1241.40 SQ.FT.	115.33 SQ.M.

KEY SECTION



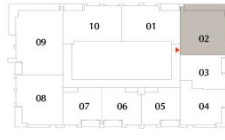
KEY PLAN



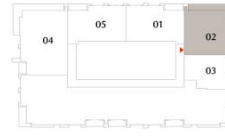
PODIUM LEVEL-2



LEVEL-1



TYPICAL FLOOR LEVEL (2-22 & 24-47)



MEP FLOOR LEVEL-23



FLOOR PLAN 1. All dimensions are in imperial and metric, and measured from finish to finish excluding construction tolerances. 2. All materials, dimensions, and drawings are approximate only. 3. Information is subject to change without notice, at developer's absolute discretion. 4. Actual area may vary from the stated area. 5. Drawings not to scale. 6. All images used are for illustrative purposes only and do not represent the actual size, features, specifications, fittings, and furnishings. 7. The developer reserves the right to make revisions / alterations, at its absolute discretion, without any liability whatsoever.

LYVIA *By* PALACE

DUBAI CREEK HARBOUR

1 BEDROOM TYPE-1

UNIT P203, 103, 203-2203 & 2403-4703, 2303

SUITE AREA	679.85 SQ.FT.	63.16 SQ.M.
BALCONY AREA	74.92 SQ.FT.	6.96 SQ.M.
TOTAL AREA	754.77 SQ.FT.	70.12 SQ.M.



KEY SECTION

KEY PLAN



FLOOR PLAN 1. All dimensions are in imperial and metric, and measured from finish to finish excluding construction tolerances. 2. All materials, dimensions, and drawings are approximate only. 3. Information is subject to change without notice, at developer's absolute discretion. 4. Actual area may vary from the stated area. 5. Drawings not to scale. 6. All images used are for illustrative purposes only and do not represent the actual size, features, specifications, fittings, and furnishings. The developer reserves the right to make revisions / alterations, at its absolute discretion, without any liability whatsoever.

EMAAR

LYVIA *By* PALACE

DUBAI CREEK HARBOUR

1 BEDROOM TYPE-2A

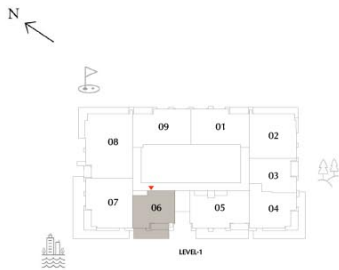
UNIT 106

SUITE AREA	692.55 SQ.FT.	64.34 SQ.M.
BALCONY AREA	291.70 SQ.FT.	27.10 SQ.M.
TOTAL AREA	984.25 SQ.FT.	91.44 SQ.M.

KEY SECTION



KEY PLAN



FLOOR PLAN 1. All dimensions are in imperial and metric, and measured from finish to finish excluding construction tolerances. 2. All materials, dimensions, and drawings are approximate only. 3. Information is subject to change without notice, at developer's absolute discretion. 4. Actual area may vary from the stated area. 5. Drawings not to scale. 6. All images used are for illustrative purposes only and do not represent the actual size, features, specifications, fittings, and furnishings. 7. The developer reserves the right to make revisions / alterations, at its absolute discretion, without any liability whatsoever.

EMAAR

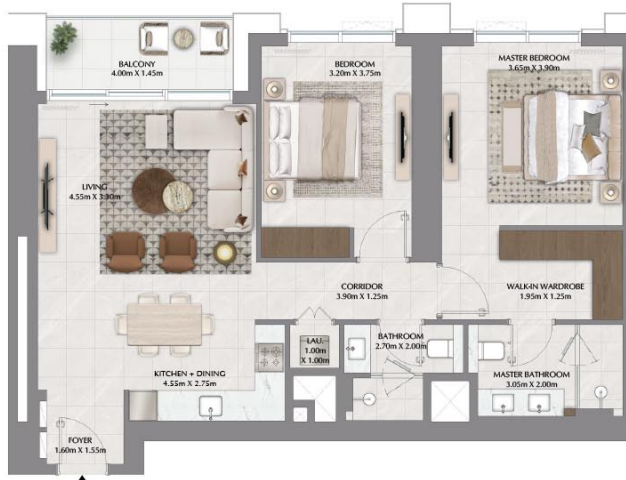
LYVIA By PALACE

DUBAI CREEK HARBOUR

2 BEDROOM TYPE-2A

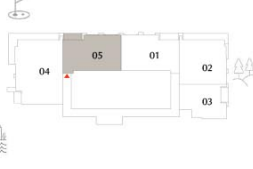
UNIT 109, 210-2210 & 2410-4710, 2305

SUITE AREA	1058.95 SQ.FT.	98.38 SQ.M.
BALCONY AREA	85.03 SQ.FT.	7.90 SQ.M.
TOTAL AREA	1143.98 SQ.FT.	106.28 SQ.M.
UNIT P205		
SUITE AREA	1068.86 SQ.FT.	99.30 SQ.M.
BALCONY AREA	86.54 SQ.FT.	8.04 SQ.M.
TOTAL AREA	1155.40 SQ.FT.	107.34 SQ.M.



KEY SECTION

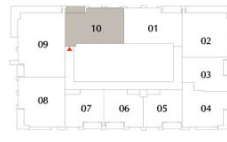
KEY PLAN



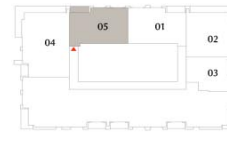
PODIUM LEVEL-2



LEVEL-1



TYPICAL FLOOR LEVEL (Q-22 & 24-47)



MEP FLOOR LEVEL-23

FLOOR PLAN 1. All dimensions are in imperial and metric, and measured from finish to finish excluding construction tolerances. 2. All materials, dimensions, and drawings are approximate only. 3. Information is subject to change without notice, at developer's absolute discretion. 4. Actual area may vary from the stated area. 5. Drawings not to scale. 6. All images used are for illustrative purposes only and do not represent the actual size, features, specifications, fittings, and furnishings. The developer reserves the right to make revisions / alterations, at its absolute discretion, without any liability whatsoever.

EMAAR

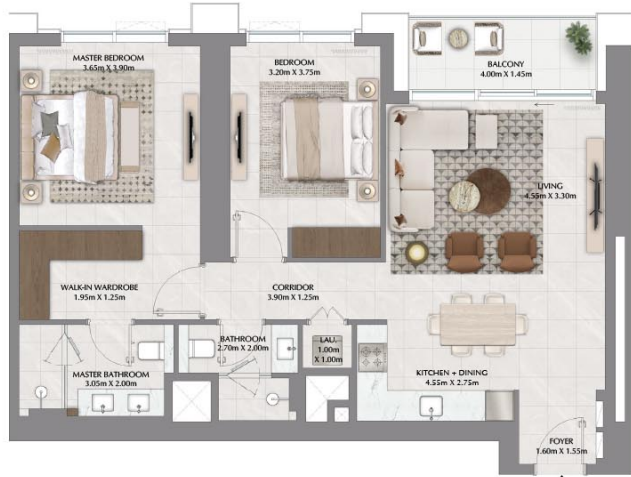
LYVIA By PALACE

DUBAI CREEK HARBOUR

2 BEDROOM TYPE-2B

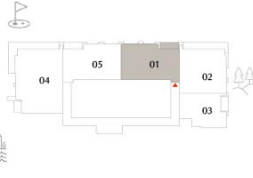
UNIT 101, 201-2201 & 2401-4701, 2301

SUITE AREA	1058.95 SQ.FT.	98.38 SQ.M.
BALCONY AREA	85.03 SQ.FT.	7.90 SQ.M.
TOTAL AREA	1143.98 SQ.FT.	106.28 SQ.M.
UNIT P201		
SUITE AREA	1068.96 SQ.FT.	99.31 SQ.M.
BALCONY AREA	86.54 SQ.FT.	8.04 SQ.M.
TOTAL AREA	1155.50 SQ.FT.	107.35 SQ.M.



KEY SECTION

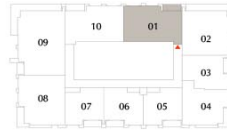
KEY PLAN



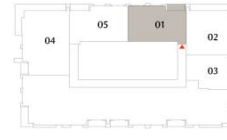
PODIUM LEVEL-2



LEVEL-1



TYPICAL FLOOR LEVEL (2-22 & 24-47)



MEP FLOOR LEVEL-23

FLOOR PLAN 1. All dimensions are in imperial and metric, and measured from finish to finish excluding construction tolerances. 2. All materials, dimensions, and drawings are approximate only. 3. Information is subject to change without notice, at developer's absolute discretion. 4. Actual area may vary from the stated area. 5. Drawings not to scale. 6. All images used are for illustrative purposes only and do not represent the actual size, features, specifications, fittings, and furnishings. The developer reserves the right to make revisions / alterations, at its absolute discretion, without any liability whatsoever.

EMAAR

LYVIA *By* PALACE

DUBAI CREEK HARBOUR

1 BEDROOM TYPE-2B

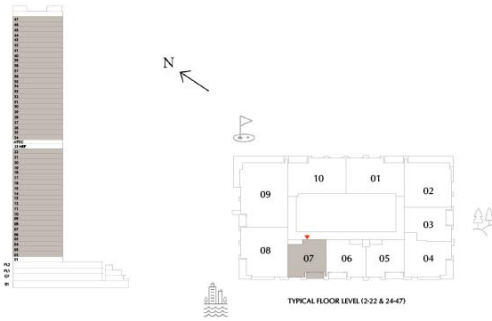
UNIT 207-2207 & 2407-4707

SUITE AREA	695.89 SQ.FT.	64.65 SQ.M.
BALCONY AREA	89.34 SQ.FT.	8.30 SQ.M.
TOTAL AREA	785.23 SQ.FT.	72.95 SQ.M.



KEY SECTION

KEY PLAN



FLOOR PLAN 1. All dimensions are in imperial and metric, and measured from finish to finish excluding construction tolerances. 2. All materials, dimensions, and drawings are approximate only. 3. Information is subject to change without notice, at developer's absolute discretion. 4. Actual area may vary from the stated area. 5. Drawings not to scale. 6. All images used are for illustrative purposes only and do not represent the actual size, features, specifications, fittings, and furnishings. 7. The developer reserves the right to make revisions / alterations, at its absolute discretion, without any liability whatsoever.

EMAAR

LYVIA By PALACE

DUBAI CREEK HARBOUR

1 BEDROOM TYPE-3A

UNIT 104

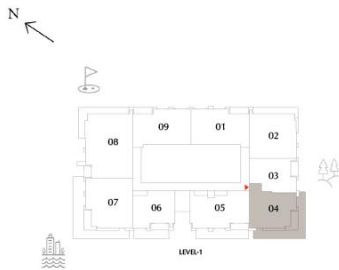
SUITE AREA	816.98 SQ.FT.	75.90 SQ.M.
BALCONY AREA	600.30 SQ.FT.	55.77 SQ.M.
TOTAL AREA	1417.28 SQ.FT.	131.67 SQ.M.



KEY SECTION



KEY PLAN



FLOOR PLAN 1. All dimensions are in imperial and metric, and measured from finish to finish excluding construction tolerances. 2. All materials, dimensions, and drawings are approximate only. 3. Information is subject to change without notice, at developer's absolute discretion. 4. Actual area may vary from the stated area. 5. Drawings not to scale. 6. All images used are for illustrative purposes only and do not represent the actual size, features, specifications, fittings, and furnishings. 7. The developer reserves the right to make revisions / alterations, at its absolute discretion, without any liability whatsoever.

EMAAR

LYVIA By PALACE

DUBAI CREEK HARBOUR

2 BEDROOM TYPE-3A

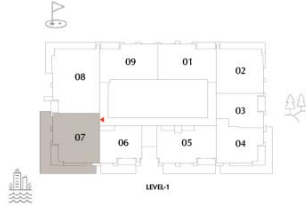
UNIT 107

SUITE AREA	1102.98 SQ.FT.	102.47 SQ.M.
BALCONY AREA	813.75 SQ.FT.	75.60 SQ.M.
TOTAL AREA	1916.73 SQ.FT.	178.07 SQ.M.



KEY SECTION

KEY PLAN



FLOOR PLAN 1. All dimensions are in imperial and metric, and measured from finish to finish excluding construction tolerances. 2. All materials, dimensions, and drawings are approximate only. 3. Information is subject to change without notice, at developer's absolute discretion. 4. Actual area may vary from the stated area. 5. Drawings not to scale. 6. All images used are for illustrative purposes only and do not represent the actual size, features, specifications, fittings, and furnishings. 7. The developer reserves the right to make revisions / alterations, at its absolute discretion, without any liability whatsoever.

EMAAR

LYVIA *By* PALACE

DUBAI CREEK HARBOUR

1 BEDROOM TYPE-3B

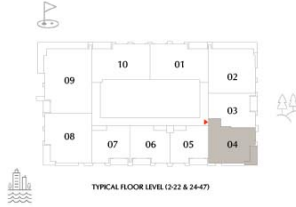
UNIT 204-2204 & 2404-4704

SUITE AREA	818.81 SQ.FT.	76.07 SQ.M.
BALCONY AREA	95.05 SQ.FT.	8.83 SQ.M.
TOTAL AREA	913.86 SQ.FT.	84.90 SQ.M.



KEY SECTION

KEY PLAN



TYPICAL FLOOR LEVEL (2-22 & 24-27)

FLOOR PLAN 1. All dimensions are in imperial and metric, and measured from finish to finish excluding construction tolerances. 2. All materials, dimensions, and drawings are approximate only. 3. Information is subject to change without notice, at developer's absolute discretion. 4. Actual area may vary from the stated area. 5. Drawings not to scale. 6. All images used are for illustrative purposes only and do not represent the actual size, features, specifications, fittings, and furnishings. 7. The developer reserves the right to make revisions / alterations, at its absolute discretion, without any liability whatsoever.

EMAAR

LYVIA *By* PALACE

DUBAI CREEK HARBOUR

2 BEDROOM TYPE-3B

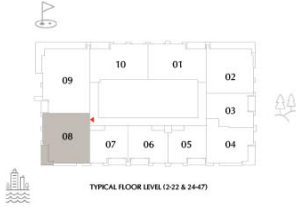
UNIT 208-2208 & 2408-4708

SUITE AREA	1107.07 SQ.FT.	102.85 SQ.M.
BALCONY AREA	99.14 SQ.FT.	9.21 SQ.M.
TOTAL AREA	1206.21 SQ.FT.	112.06 SQ.M.

KEY SECTION



KEY PLAN



FLOOR PLAN 1. All dimensions are in imperial and metric, and measured from finish to finish excluding construction tolerances. 2. All materials, dimensions, and drawings are approximate only. 3. Information is subject to change without notice, at developer's absolute discretion. 4. Actual area may vary from the stated area. 5. Drawings not to scale. 6. All images used are for illustrative purposes only and do not represent the actual size, features, specifications, fittings, and furnishings. 7. The developer reserves the right to make revisions / alterations, at its absolute discretion, without any liability whatsoever.

EMAAR

LYVIA By PALACE

DUBAI CREEK HARBOUR

2 BEDROOM TYPE-4

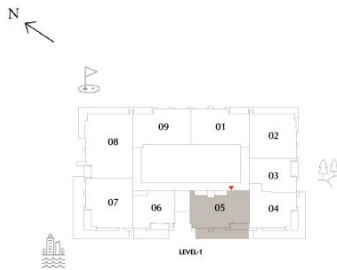
	UNIT 105	
SUITE AREA	1017.84 SQ.FT.	94.56 SQ.M.
BALCONY AREA	400.74 SQ.FT.	37.23 SQ.M.
TOTAL AREA	1418.58 SQ.FT.	131.79 SQ.M.



KEY SECTION



KEY PLAN



FLOOR PLAN 1. All dimensions are in imperial and metric, and measured from finish to finish excluding construction tolerances. 2. All materials, dimensions, and drawings are approximate only. 3. Information is subject to change without notice, at developer's absolute discretion. 4. Actual area may vary from the stated area. 5. Drawings not to scale. 6. All images used are for illustrative purposes only and do not represent the actual size, features, specifications, fittings, and furnishings. The developer reserves the right to make revisions / alterations, at its absolute discretion, without any liability whatsoever.

EMAAR

LYVIA *By* PALACE

DUBAI CREEK HARBOUR

1 BEDROOM TYPE-4A

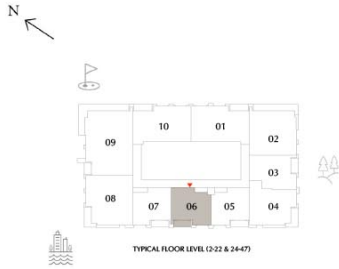
UNIT 206-2206 & 2406-4706

SUITE AREA	672.42 SQ.FT.	62.47 SQ.M.
BALCONY AREA	88.37 SQ.FT.	8.21 SQ.M.
TOTAL AREA	760.79 SQ.FT.	70.68 SQ.M.

KEY SECTION



KEY PLAN



FLOOR PLAN 1. All dimensions are in imperial and metric, and measured from finish to finish excluding construction tolerances. 2. All materials, dimensions, and drawings are approximate only. 3. Information is subject to change without notice, at developer's absolute discretion. 4. Actual area may vary from the stated area. 5. Drawings not to scale. 6. All images used are for illustrative purposes only and do not represent the actual size, features, specifications, fittings, and furnishings. The developer reserves the right to make revisions / alterations, at its absolute discretion, without any liability whatsoever.

EMAAR

LYVIA *By* PALACE

DUBAI CREEK HARBOUR

1 BEDROOM TYPE-4B

UNIT 205-2205 & 2405-4705

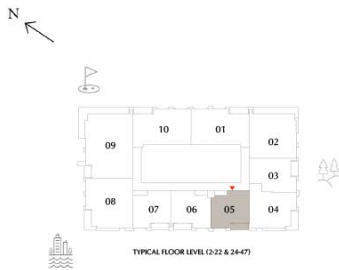
SUITE AREA	684.80 SQ.FT.	63.62 SQ.M.
BALCONY AREA	89.88 SQ.FT.	8.35 SQ.M.
TOTAL AREA	774.68 SQ.FT.	71.97 SQ.M.



KEY SECTION



KEY PLAN



FLOOR PLAN 1. All dimensions are in imperial and metric, and measured from finish to finish excluding construction tolerances. 2. All materials, dimensions, and drawings are approximate only. 3. Information is subject to change without notice, at developer's absolute discretion. 4. Actual area may vary from the stated area. 5. Drawings not to scale. 6. All images used are for illustrative purposes only and do not represent the actual size, features, specifications, fittings, and furnishings. 7. The developer reserves the right to make revisions / alterations, at its absolute discretion, without any liability whatsoever.

EMAAR

LYVIA By PALACE

DUBAI CREEK HARBOUR

3 BEDROOM

UNIT P204

SUITE AREA	1464.32 SQ.FT.	136.04 SQ.M.
BALCONY AREA	357.04 SQ.FT.	33.17 SQ.M.
TOTAL AREA	1821.36 SQ.FT.	169.21 SQ.M.

UNIT 108, 209-2209 & 2409-4709, 2304

SUITE AREA	1472.18 SQ.FT.	136.77 SQ.M.
BALCONY AREA	363.17 SQ.FT.	33.74 SQ.M.
TOTAL AREA	1835.35 SQ.FT.	170.51 SQ.M.



KEY SECTION



KEY PLAN



FLOOR PLAN 1. All dimensions are in imperial and metric, and measured from finish to finish excluding construction tolerances. 2. All materials, dimensions, and drawings are approximate only. 3. Information is subject to change without notice, at developer's absolute discretion. 4. Actual area may vary from the stated area. 5. Drawings not to scale. 6. All images used are for illustrative purposes only and do not represent the actual size, features, specifications, fittings, and furnishings. The developer reserves the right to make revisions / alterations, at it's absolute discretion, without any liability whatsoever.