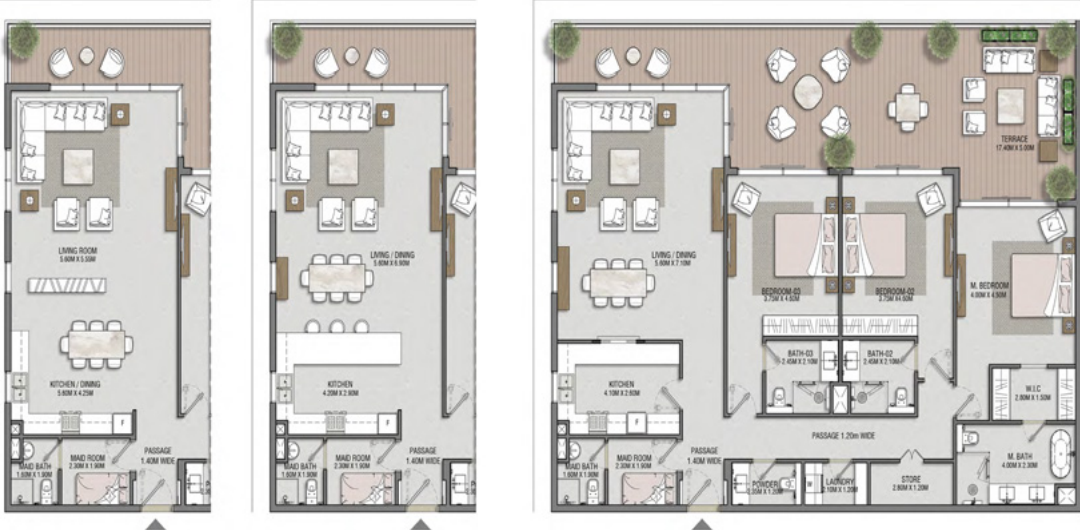


# Manzel and Majlis Reem Island - Apartment

## THREE BEDROOM (TYPE A)



### FEATURES

- Living/Dining
- 3 Bedrooms all with ensuite bathrooms and Master Bedroom with master bathroom & Walk in Closet
- Kitchen
- Maid's room with bath
- Powder Room
- Store
- Laundry
- Deck/Terrace

<b>No. of BR</b>	03
<b>Total Area</b>	2,574 Sq.ft*

\*Starting from

## TWO BEDROOM (TYPE A1)



### FEATURES

- Living/Dining
- 2 Bedrooms both with ensuite bathrooms and Master Bedroom with master bathroom & Walk in Closet
- Kitchen
- Maid's room with bath
- Powder Room
- Store
- Laundry
- Outdoor Deck

<b>No. of BR</b>	02
<b>Total Area</b>	1,692 Sq.ft*

\*Starting from

## TWO BEDROOM (TYPE A2)



### FEATURES

- Living/Dining
- 2 Bedrooms both with ensuite bathrooms
- Kitchen
- Maid's room with bath
- Powder Room
- Store
- Laundry
- Outdoor Deck

<b>No. of BR</b>	02
<b>Total Area</b>	1,825 Sq.ft*

\*Starting from

## ONE BEDROOM (TYPE A2)



### FEATURES

- Living/Dining
- Master Bedroom with Ensuite Master Bathroom & Walk in Closet
- Kitchen
- Powder Room
- Store
- Laundry
- Outdoor Deck

<b>No. of BR</b>	01
<b>Total Area</b>	1,038 Sq.ft*

\*Starting from

## ONE BEDROOM (TYPE A3)



### FEATURES

- Living/Dining
- Master Bedroom with Ensuite Master Bathroom & Walk in Closet
- Kitchen
- Powder Room
- Store
- Laundry
- Outdoor Deck

<b>No. of BR</b>	01
<b>Total Area</b>	1,286 Sq.ft*

\*Starting from

## ONE BEDROOM (TYPE A4)



### FEATURES

- Living/Dining
- Master Bedroom with Ensuite Master Bathroom & Walk in Closet
- Kitchen
- Maid's room with bath
- Powder Room
- Store
- Laundry
- Outdoor Deck

<b>No. of BR</b>	01
<b>Total Area</b>	1,192 Sq.ft*

\*Starting from

Disclaimer: Numbers, square footage and floor plans are approximate. Final dimensions, square footage and floor plans may vary.

## TWO BEDROOM (TYPE B)



### FEATURES

- Living/Dining
- 2 Bedrooms both with ensuite bathrooms
- Kitchen
- Maid's room with bath
- Powder Room
- Store
- Laundry
- Outdoor Deck

<b>No. of BR</b>	02
<b>Total Area</b>	1,612 Sq.ft*

\*Starting from

## THREE BEDROOM (TYPE B)



### FEATURES

- Living/Dining
- 3 Bedrooms all with ensuite bathrooms and Master Bedroom with master bathroom & Walk in Closet
- Kitchen
- Maid's room with bath
- Powder Room
- Store
- Laundry
- Deck/Terrace

<b>No. of BR</b>	03
<b>Total Area</b>	2,405 Sq.ft*

\*Starting from

## ONE BEDROOM (TYPE B)



### FEATURES

- Living/Dining
- Master Bedroom with Ensuite Master Bathroom & Walk in Closet
- Kitchen
- Powder Room
- Store
- Laundry
- Outdoor Deck

<b>No. of BR</b>	01
<b>Total Area</b>	995 Sq.ft*

\*Starting from

## THREE BEDROOM (TYPE C)



### FEATURES

- Living/Dining
- 3 Bedrooms all with ensuite bathrooms and Master Bedroom with master bathroom & Walk in Closet
- Kitchen
- Maid's room with bath
- Powder Room
- Store
- Laundry
- Deck/Terrace

<b>No. of BR</b>	03
<b>Total Area</b>	2,171 Sq.ft*

\*Starting from

Disclaimer: Numbers, square footage and floor plans are approximate. Final dimensions, square footage and floor plans may vary.

## TWO BEDROOM (TYPE C)



### FEATURES

- Living/Dining
- 2 Bedrooms both with ensuite bathrooms
- Kitchen
- Maid's room with bath
- Powder Room
- Store
- Laundry
- Outdoor Deck

<b>No. of BR</b>	02
<b>Total Area</b>	1,457 Sq.ft*

\*Starting from

# CONTACT US



Call Us [+971 4 248 3400](tel:+97142483400)



WhatsApp [+971 55 162 3236](https://wa.me/971551623236)

**TANAMI**  
P R O P E R T I E S