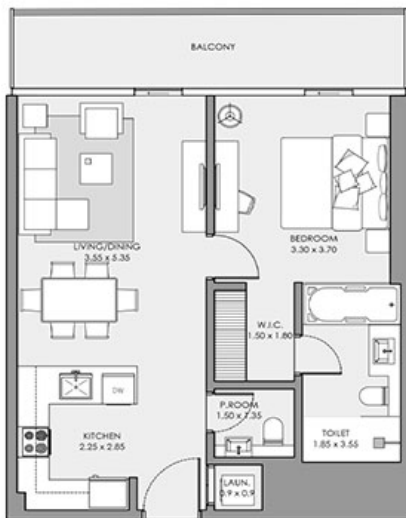


Mar Casa by Deyaar - Apartment

1 BEDROOM APARTMENT

TOTAL 771 SQFT / TYPE 1BR-01

INTERIOR AREA / 650 sq.ft.
BALCONY AREA / 121 sq.ft.
NET AREA / 771 sq.ft.



KEY PLAN

Sea View



Sea View & Dubai Skyline
Floors / 1st to 7th

Sea View



Sea View & Dubai Skyline
Floors / 8th to 10th

Sea View



Sea View & Dubai Skyline
Floors / 11th to 19th

Sea View

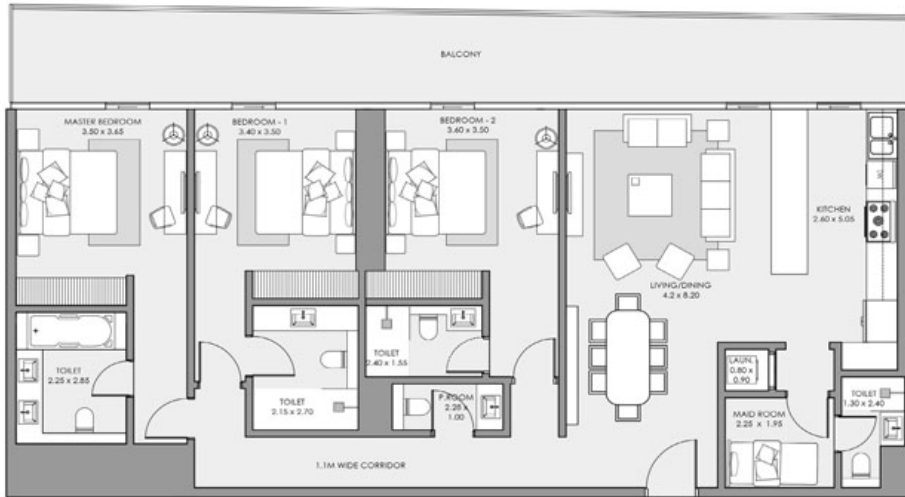


Sea View & Dubai Skyline
Floors / 20th to 25th

3 BEDROOM APARTMENT

TOTAL 1,971 SQFT / TYPE 3BR-01

INTERIOR AREA / 1,630 sq.ft.
BALCONY AREA / 341 sq.ft.
NET AREA / 1,971 sq.ft.



KEY PLAN



Sea View & Dubai Skyline
Floors / 26th to 37th

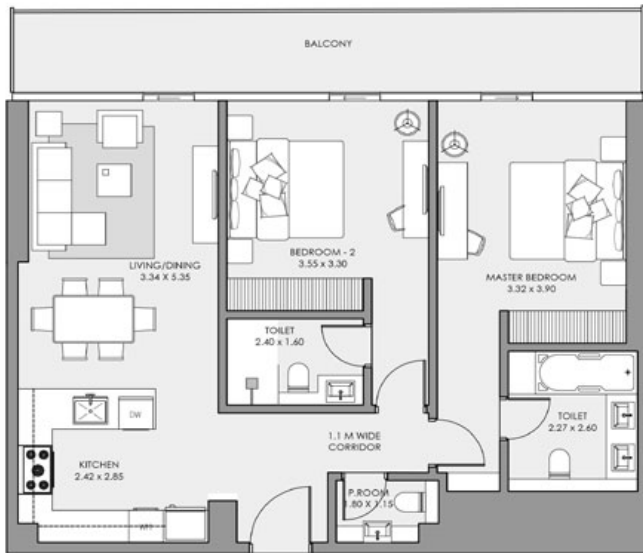


Sea View & Dubai Skyline
Floors / 38th to 41st

2 BEDROOM APARTMENT

TOTAL 1,151 SQFT / TYPE 2BR-01

INTERIOR AREA / 970 sq.ft.
BALCONY AREA / 181 sq.ft.
NET AREA / 1,151 sq.ft.



KEY PLAN

Sea View



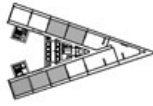
Floors / 11th to 19th

Sea View



Sea View & Dubai Skyline
Floors / 20th to 25th

Sea View

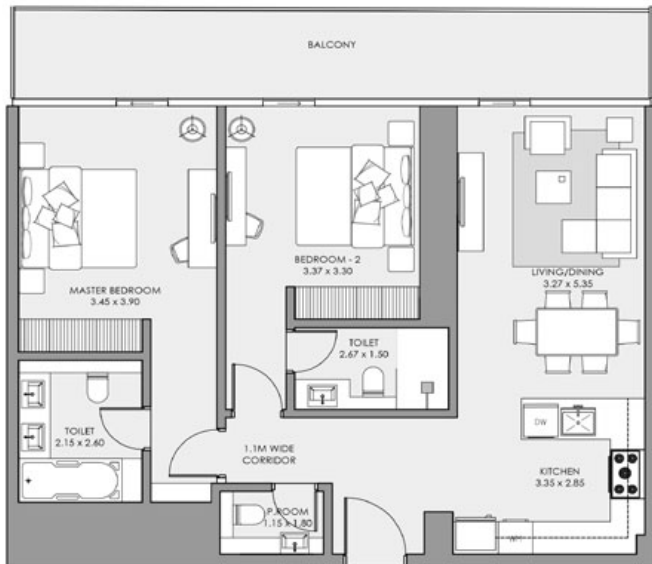


Sea View & Dubai Skyline
Floors / 26th to 37th

2 BEDROOM APARTMENT

TOTAL 1,161 SQFT / TYPE 2BR-01A

INTERIOR AREA / 970 sq.ft.
BALCONY AREA / 191 sq.ft.
NET AREA / 1,161 sq.ft.



KEY PLAN

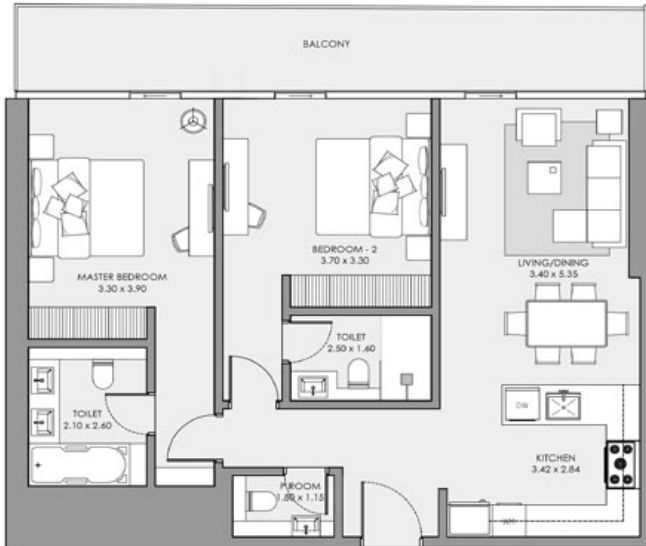


Sea View & Dubai Skyline
Floors / 11th to 19th

2 BEDROOM APARTMENT

TOTAL 1,149 SQFT / TYPE 2BR-01B

INTERIOR AREA / 970 sq.ft.
BALCONY AREA / 179 sq.ft.
NET AREA / 1,149 sq.ft.



KEY PLAN

Sea View

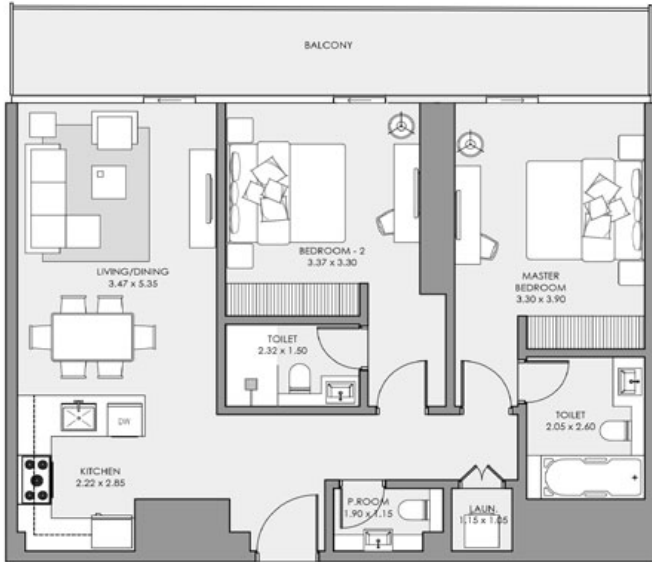


Floors / 26th to 37th

2 BEDROOM APARTMENT

TOTAL 1,157 SQFT / TYPE 2BR-02

INTERIOR AREA / 970 sq.ft.
BALCONY AREA / 187 sq.ft.
NET AREA / 1,157 sq.ft.



KEY PLAN



Sea View & Dubai Skyline
Floors / 11th to 19th

3 BEDROOM APARTMENT

TOTAL 1,895 SQFT / TYPE 3BR-02

INTERIOR AREA / 1,595 sq.ft.
BALCONY AREA / 300 sq.ft.
NET AREA / 1,895 sq.ft.



KEY PLAN

Sea View

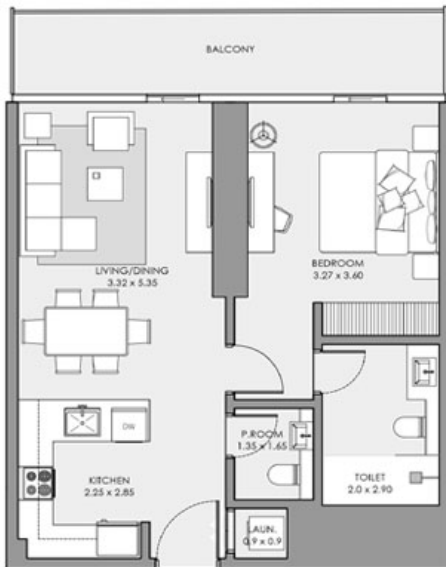


Floors / 38th to 41st

1 BEDROOM APARTMENT

TOTAL 772 SQFT / TYPE 1BR-02

INTERIOR AREA / 650 sq.ft.
BALCONY AREA / 122 sq.ft.
NET AREA / 772 sq.ft.



KEY PLAN

Sea View



Sea View & Dubai Skyline
Floors / 1st to 7th

Sea View



Sea View & Dubai Skyline
Floors / 8th to 10th

Sea View



Sea View & Dubai Skyline
Floors / 11th to 19th

Sea View

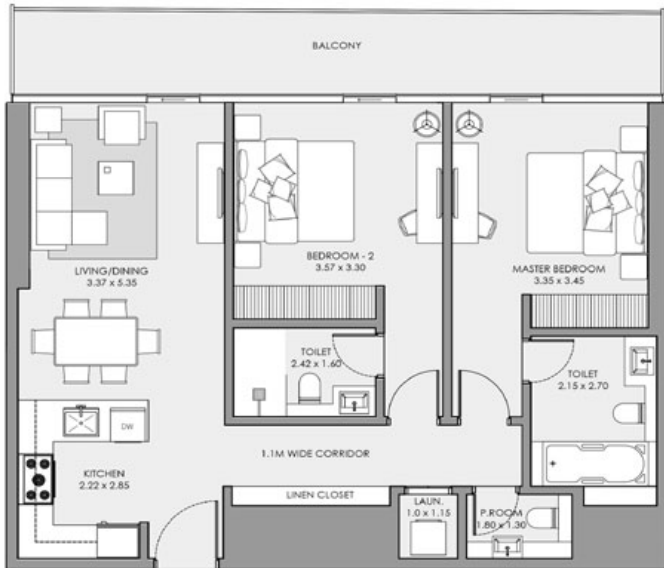


Sea View & Dubai Skyline
Floors / 20th to 25th

2 BEDROOM APARTMENT

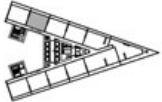
TOTAL 1,150 SQFT / TYPE 2BR-02A

INTERIOR AREA / 970 sq.ft.
BALCONY AREA / 180 sq.ft.
NET AREA / 1,150 sq.ft.



KEY PLAN

Sea View



Floors / 26th to 37th

1 BEDROOM APARTMENT

TOTAL 906 SQFT / TYPE 1BR-03

INTERIOR AREA / 750 sq.ft.
BALCONY AREA / 156 sq.ft.
NET AREA / 906 sq.ft.



KEY PLAN



Sea View & Dubai Skyline
Floors / 1st to 7th

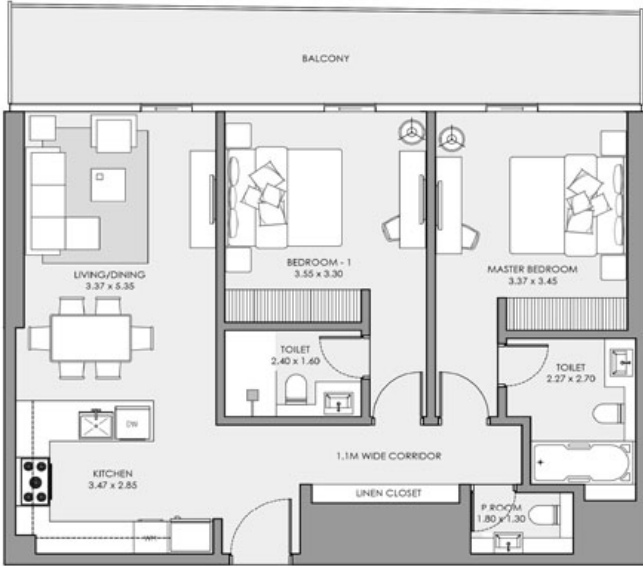


Sea View & Dubai Skyline
Floors / 8th to 10th

2 BEDROOM APARTMENT

TOTAL 1,163 SQFT / TYPE 2BR-03

INTERIOR AREA / 970 sq.ft.
BALCONY AREA / 193 sq.ft.
NET AREA / 1,163 sq.ft.



KEY PLAN

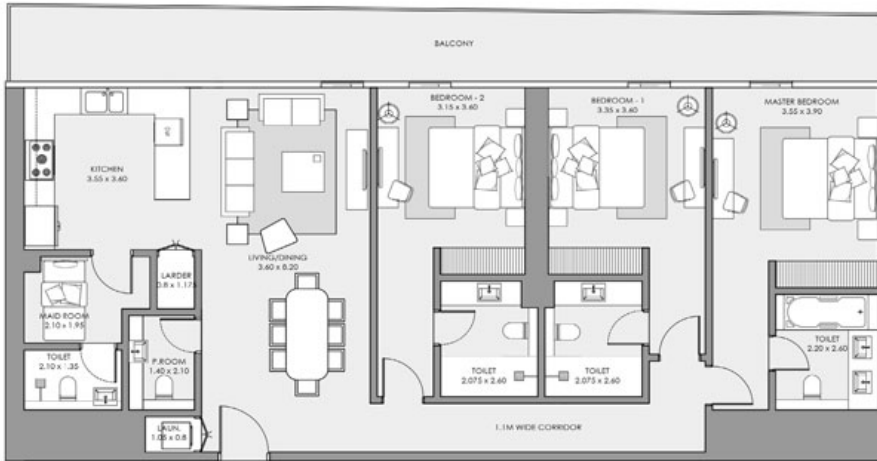


Sea View & Dubai Skyline
Floors / 26th to 37th

3 BEDROOM APARTMENT

TOTAL 1,920 SQFT / TYPE 3BR-03

INTERIOR AREA / 1,615 sq.ft.
BALCONY AREA / 305 sq.ft.
NET AREA / 1,920 sq.ft.



KEY PLAN

Sea View

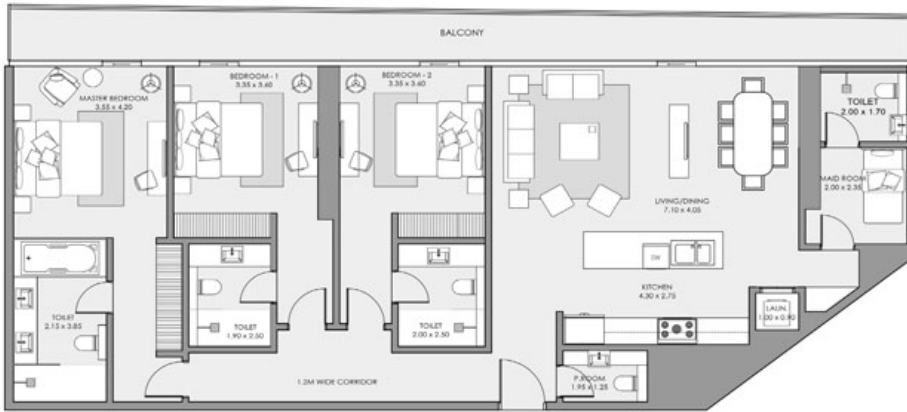


Floors / 38th to 41st

3 BEDROOM APARTMENT

TOTAL 2,100 SQFT / TYPE 3BR-04

INTERIOR AREA / 1,765 sq.ft.
BALCONY AREA / 335 sq.ft.
NET AREA / 2,100 sq.ft.



KEY PLAN

Sea View

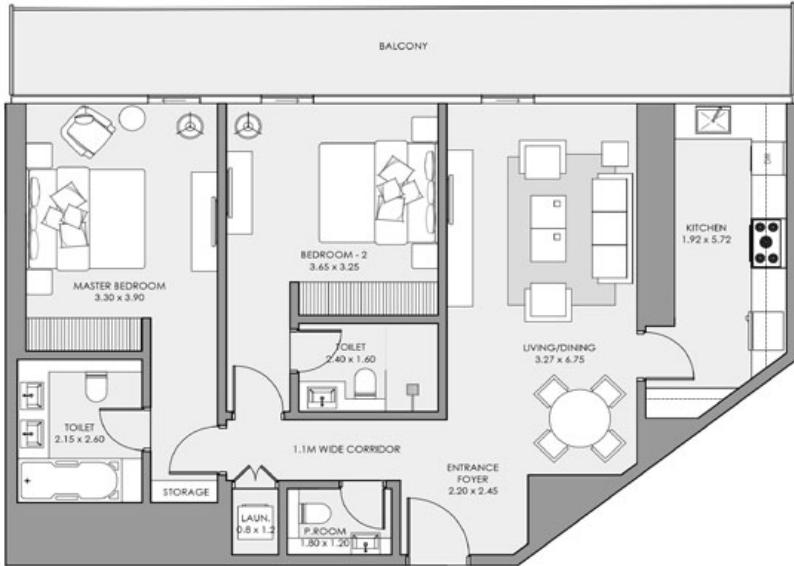


Floors / 38th to 41st

2 BEDROOM APARTMENT

TOTAL 1,312 SQFT / TYPE 2BR-04

INTERIOR AREA / 1,075 sq.ft.
BALCONY AREA / 237 sq.ft.
NET AREA / 1,312 sq.ft.



KEY PLAN

Sea View

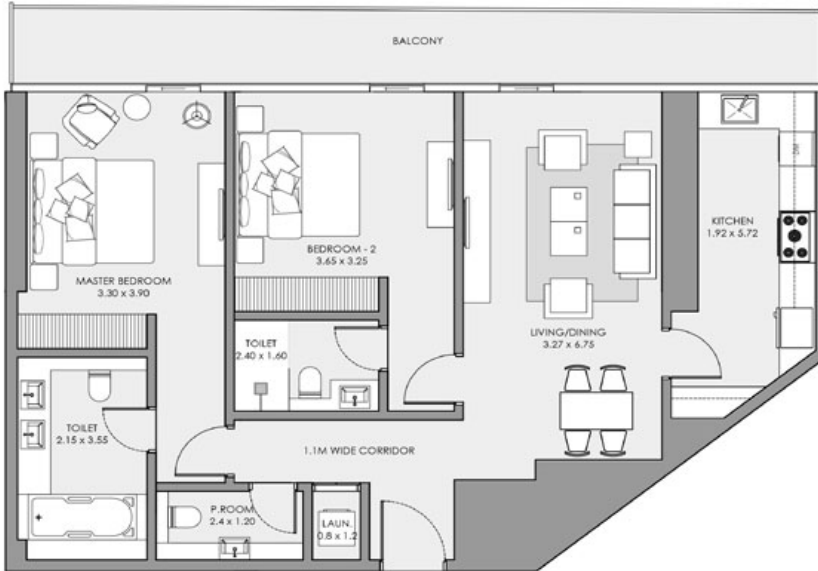


Floors / 11th to 19th

2 BEDROOM APARTMENT

TOTAL 1,328 SQFT / TYPE 2BR-04A

INTERIOR AREA / 1,090 sq.ft.
BALCONY AREA / 238 sq.ft.
NET AREA / 1,328 sq.ft.



KEY PLAN

Sea View



Floors / 20th to 25th

Sea View

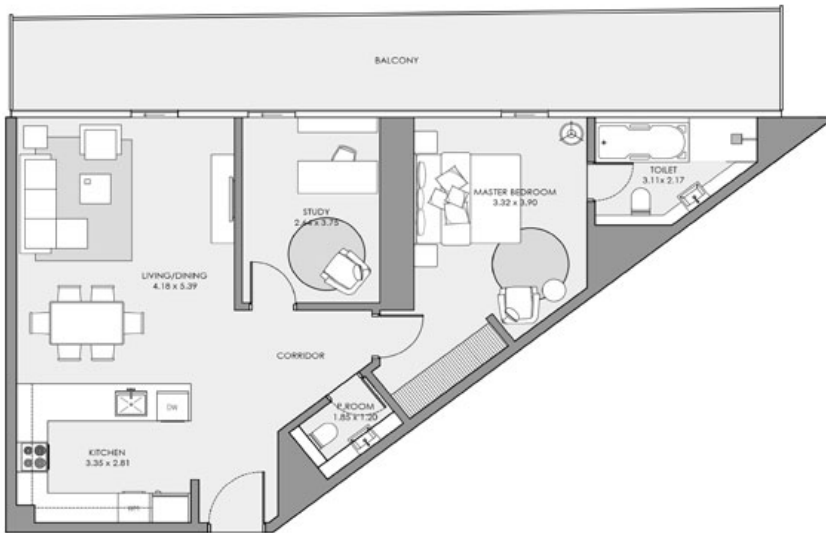


Floors / 26th to 37th

1 BEDROOM APARTMENT

TOTAL 1,181 SQFT / TYPE 1BR-WITH STUDY

INTERIOR AREA / 925 sq.ft.
BALCONY AREA / 256 sq.ft.
NET AREA / 1,181 sq.ft.



KEY PLAN

Sea View



Floors / 1st to 7th

Sea View

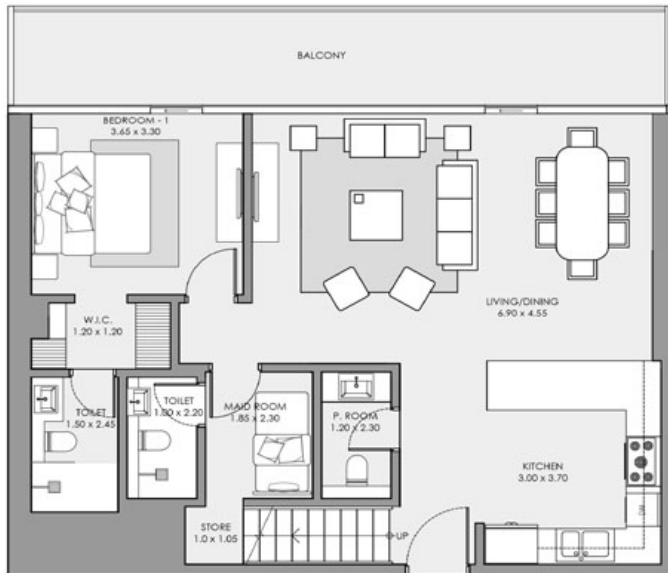


Floors / 8th to 10th

3 BEDROOM APARTMENT

TOTAL 2,295 SQFT / TYPE 3BR-DUPLEX

INTERIOR AREA / 1,970 sq.ft.
BALCONY AREA / 325 sq.ft.
NET AREA / 2,295 sq.ft.



LOWER LEVEL

KEY PLAN

Sea View

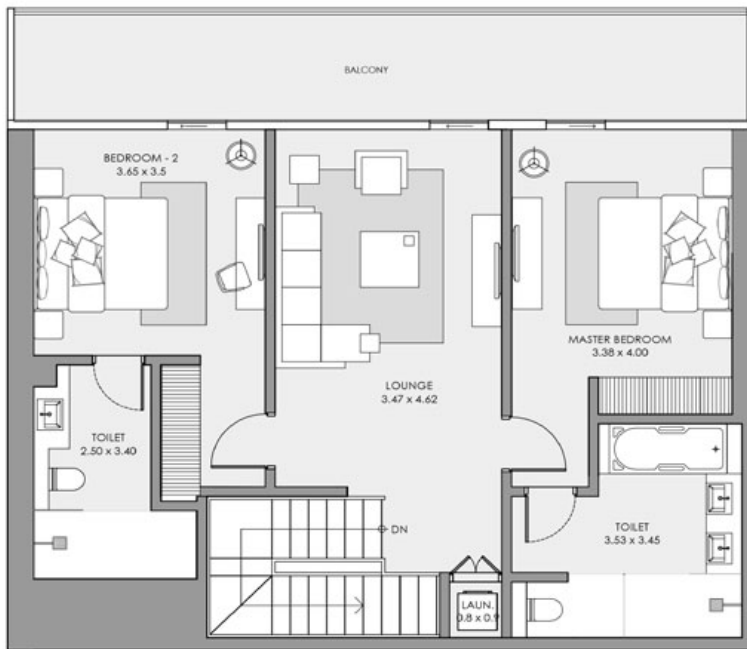


Floors / 42nd to 45th

3 BEDROOM APARTMENT

TOTAL 2,295 SQFT / TYPE 3BR-DUPLEX

INTERIOR AREA / 1,970 sq.ft.
BALCONY AREA / 325 sq.ft.
NET AREA / 2,295 sq.ft.

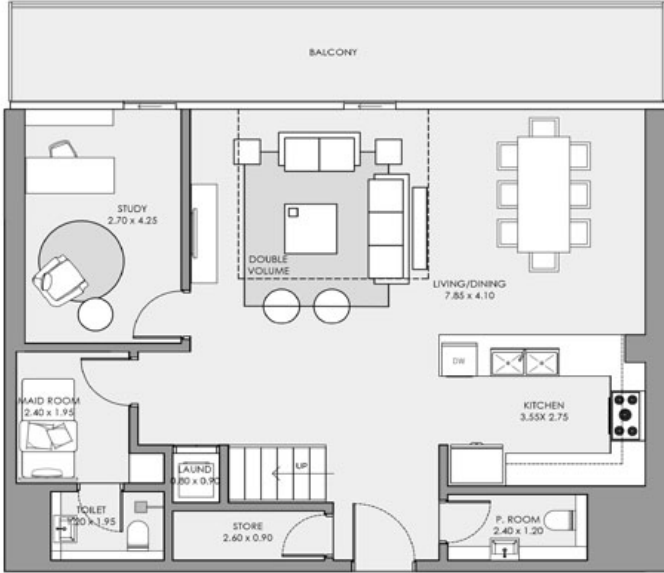


UPPER LEVEL

2 BEDROOM APARTMENT

TOTAL 2,270 SQFT / TYPE 2BR-EXECUTIVE-DUPLEX

INTERIOR AREA / 1,885 sq.ft.
BALCONY AREA / 385 sq.ft.
NET AREA / 2,270 sq.ft.



LOWER LEVEL

KEY PLAN

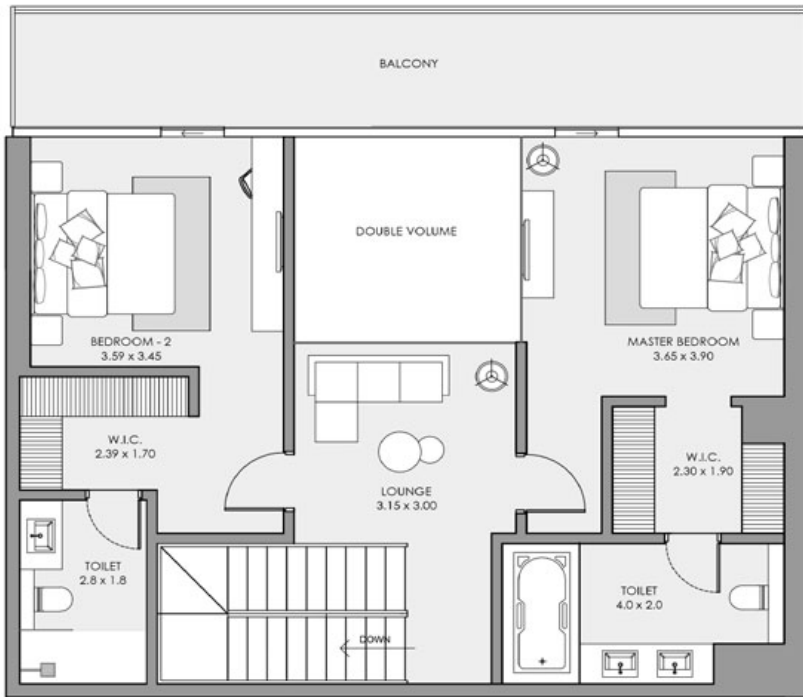


Sea View & Dubai Skyline
Floors / 42nd to 45th

2 BEDROOM APARTMENT

TOTAL 2,270 SQFT / TYPE 2BR-EXECUTIVE-DUPLEX

INTERIOR AREA / 1,885 sq.ft.
BALCONY AREA / 385 sq.ft.
NET AREA / 2,270 sqft.

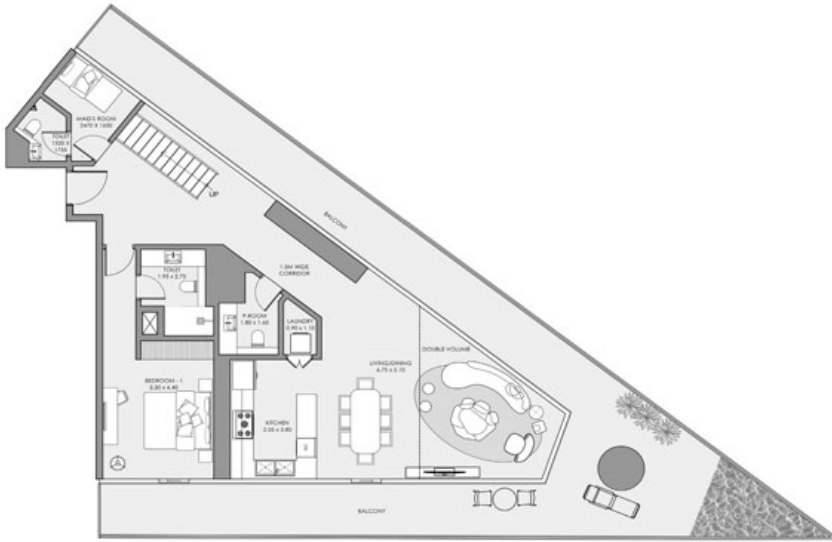


UPPER LEVEL

3 BEDROOM APARTMENT

TOTAL 4,093 SQFT / TYPE ROYAL 3BR-01

INTERIOR AREA / 2,395 sq.ft.
BALCONY AREA / 1,698 sq.ft.
NET AREA / 4,093 sq.ft.



LOWER LEVEL

KEY PLAN



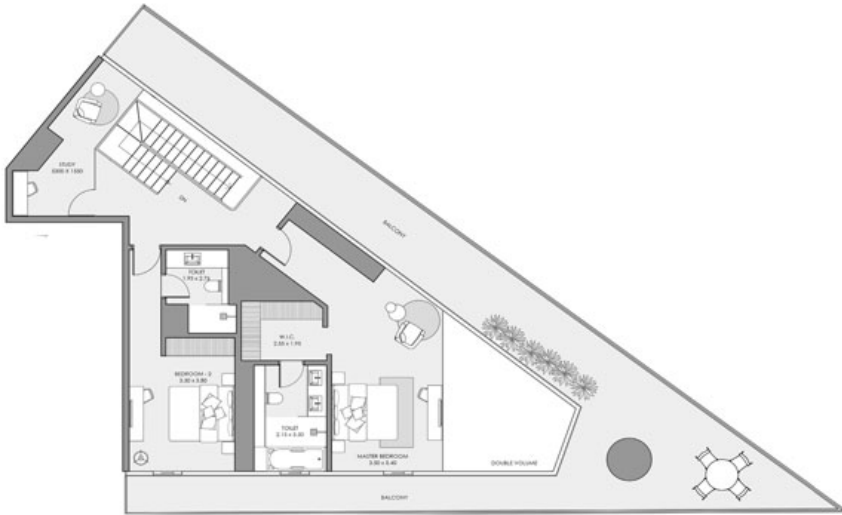
Panoramic
Sea View

Floors / 11th to 19th

3 BEDROOM APARTMENT

TOTAL 4,093 SQFT / TYPE ROYAL 3BR-01

INTERIOR AREA / 2,395 sq.ft.
BALCONY AREA / 1,698 sq.ft.
NET AREA / 4,093 sq.ft.

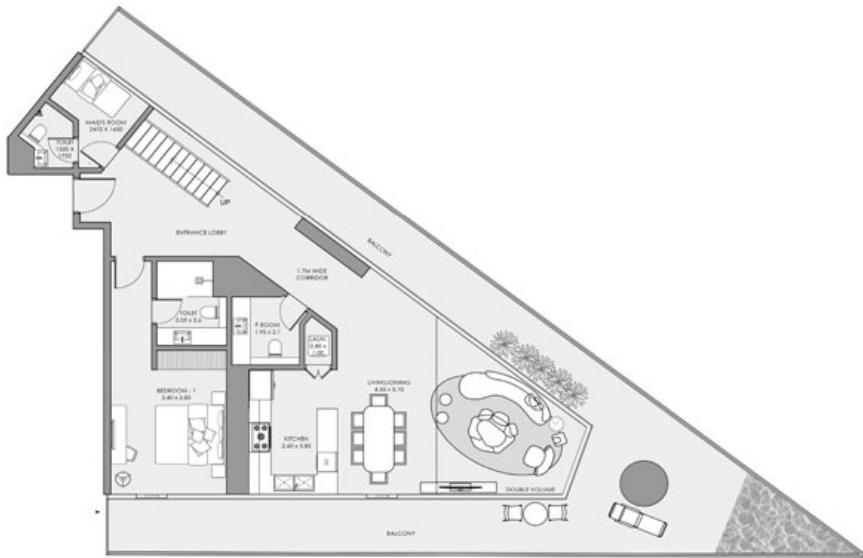


UPPER LEVEL

3 BEDROOM APARTMENT

TOTAL 4,100 SQFT / TYPE ROYAL 3BR-02

INTERIOR AREA / 2,400 sq.ft.
BALCONY AREA / 1,700 sq.ft.
NET AREA / 4,100 sq.ft.



LOWER LEVEL

KEY PLAN



Panoramic
Sea View

Floors / 20th to 25th



Panoramic
Sea View

Floors / 26th to 37th



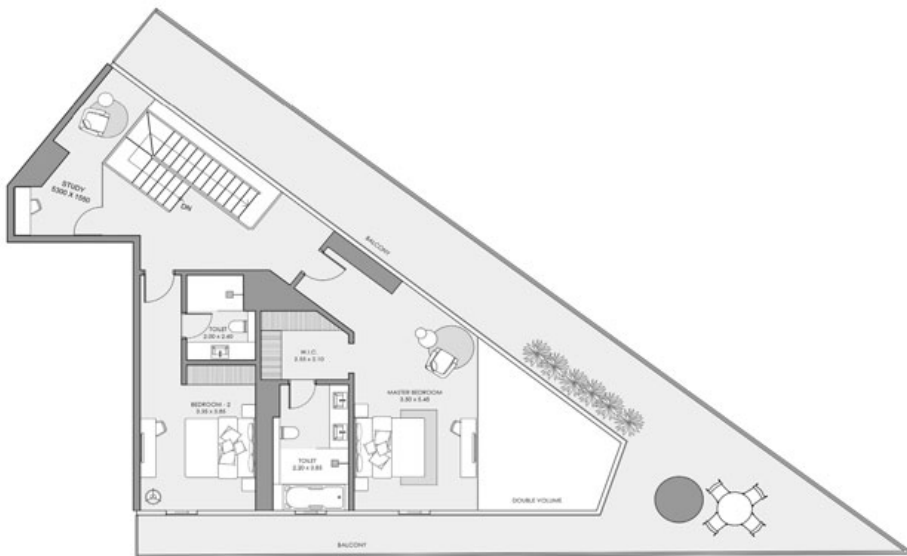
Panoramic
Sea View

Floors / 38th to 41st

3 BEDROOM APARTMENT

TOTAL 4,100 SQFT / TYPE ROYAL 3BR-02

INTERIOR AREA / 2,400 sq.ft.
BALCONY AREA / 1,700 sq.ft.
NET AREA / 4,100 sq.ft.

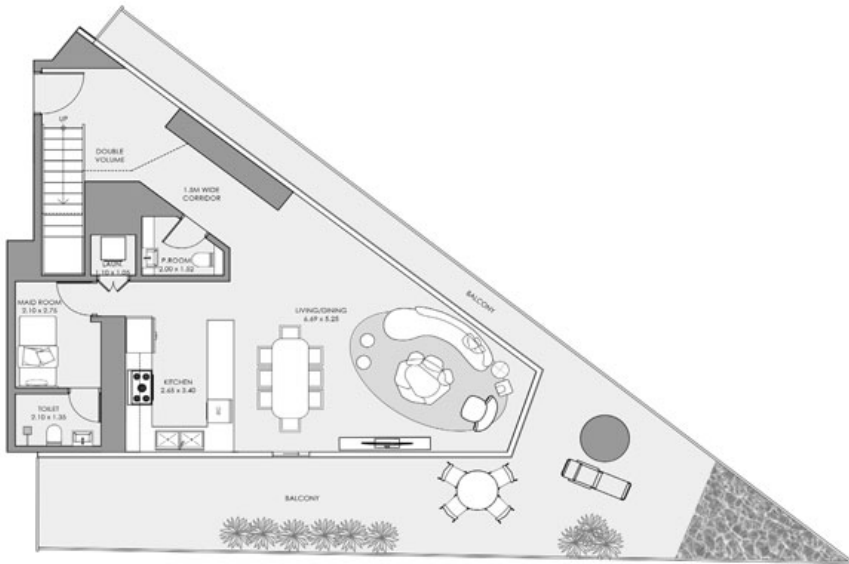


UPPER LEVEL

2 BEDROOM APARTMENT

TOTAL 3,261 SQFT / TYPE ROYAL 2BR

INTERIOR AREA / 1,785 sq.ft.
BALCONY AREA / 1,476 sq.ft.
NET AREA / 3,261 sq.ft.



LOWER LEVEL

KEY PLAN



Panoramic
Sea View

Floors / 1st to 7th



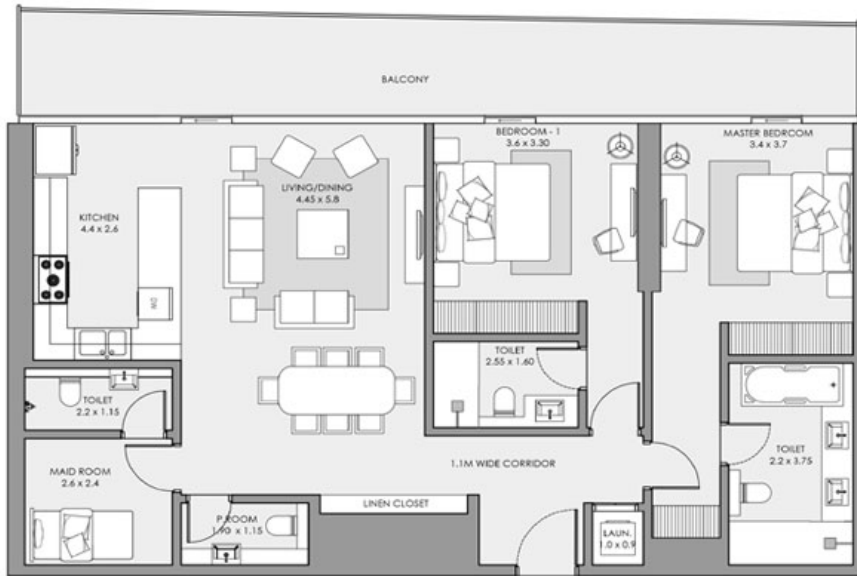
Panoramic
Sea View

Floors / 8th to 10th

2 BEDROOM APARTMENT

TOTAL 1,570 SQFT / TYPE 2BR-SUITE A

INTERIOR AREA / 1,310 sq.ft.
BALCONY AREA / 260 sq.ft.
NET AREA / 1,570 sq.ft.



KEY PLAN

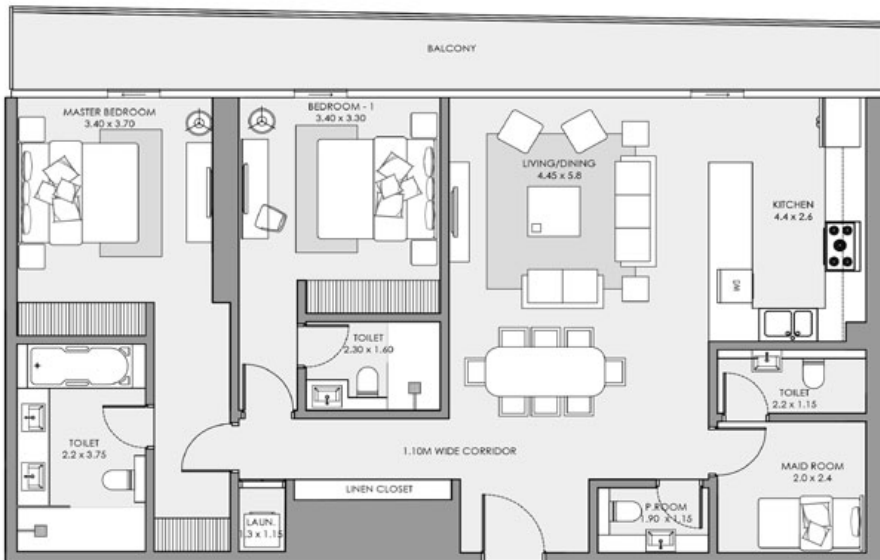


Sea View & Dubai Skyline
Floors / 38th to 41st

2 BEDROOM APARTMENT

TOTAL 1,550 SQFT / TYPE 2BR-SUITE B

INTERIOR AREA / 1,320 sq.ft.
BALCONY AREA / 230 sq.ft.
NET AREA / 1,550 sq.ft.



KEY PLAN



Sea View & Dubai Skyline
Floors / 38th to 41st

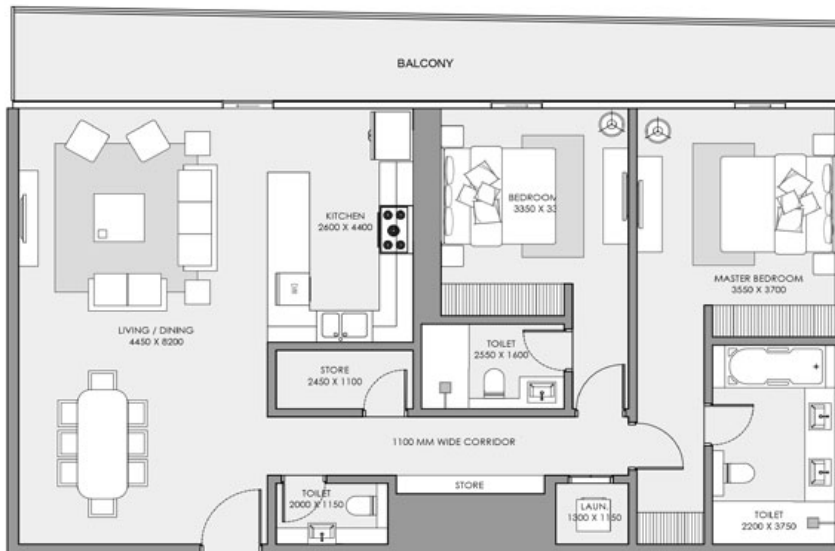
2 BEDROOM APARTMENT

TOTAL 1,560 SQFT / TYPE 2BR-SUITE C

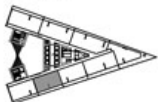
INTERIOR AREA / 1,315 sq.ft.

BALCONY AREA / 245 sq.ft.

NET AREA / 1,560 sq.ft.



KEY PLAN



Sea View & Dubai Skyline
Floors / 38th to 41th