

# Nad Al Sheba Gardens Phase 4 - Townhouse

## 3 - LEVEL TOWNHOUSE

NAD AL SHEBA  
GARDENS

TH-3 - 3-BEDROOM - 4PLEX

TH-3 - 3-BEDROOM - 4PLEX - END - 3BD

TOTAL AREA = 309.06 SQM (3327 SQFT)



GROUND FLOOR



FIRST FLOOR



SECOND FLOOR

# 2 - LEVEL TOWNHOUSE

TH-1 - 3-BEDROOM - 6PLEX

TH-1 - 3-BEDROOM - 6PLEX - MIDDLE - 3BA

TOTAL AREA = 258.07 SQM (2778 SQFT)



GROUND FLOOR



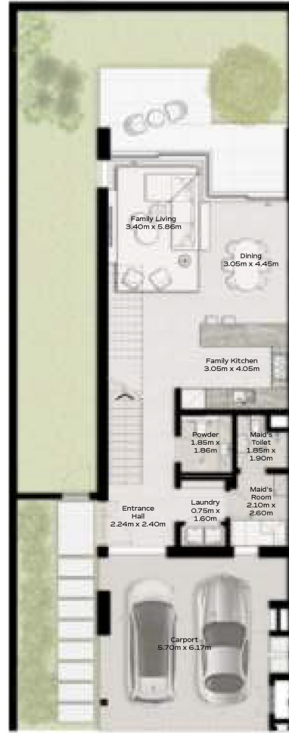
FIRST FLOOR

# 2 - LEVEL TOWNHOUSE

TH-1 - 3-BEDROOM - 6PLEX

TH-1 - 3-BEDROOM - 6PLEX - END - 3BB(M)

TOTAL AREA = 255.49 SQM (2750 SQFT)



GROUND FLOOR



FIRST FLOOR

# 3 - LEVEL TOWNHOUSE

TH-3 - 3-BEDROOM - 4PLEX

TH-3 - 3-BEDROOM - 4PLEX - MIDDLE - 3BC

TOTAL AREA = 314.17 SQM (3382 SQFT)



GROUND FLOOR



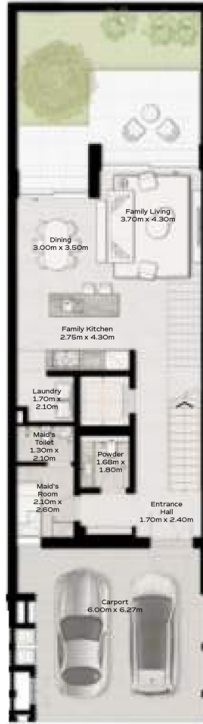
FIRST FLOOR



SECOND FLOOR

# 3 - LEVEL TOWNHOUSE

TH-2 - 3-BEDROOM - 6PLEX  
 TH-2 - 3-BEDROOM - 6PLEX - MIDDLE - 3BC  
 TOTAL AREA = 314.17 SQM (3382 SQFT)



GROUND FLOOR



FIRST FLOOR



SECOND FLOOR

# 3 - LEVEL TOWNHOUSE

TH-2 - 3-BEDROOM - 6PLEX

TH-2 - 3-BEDROOM - 6PLEX - MIDDLE - 3BC(M)

TOTAL AREA = 314.17 SQM (3382 SQFT)



GROUND FLOOR



FIRST FLOOR



SECOND FLOOR

# 3 - LEVEL TOWNHOUSE

TH-2 - 3-BEDROOM - 6PLEX

TH-2 - 3-BEDROOM - 6PLEX - END - 3BD

TOTAL AREA = 309.06 SQM (3327 SQFT)



GROUND FLOOR

FIRST FLOOR

SECOND FLOOR

# 2 - LEVEL TOWNHOUSE

TH-1 - 3-BEDROOM - 6PLEX

TH-1 - 3-BEDROOM - 6PLEX - END - 3BB

TOTAL AREA = 255.49 SQM (2750 SQFT)



GROUND FLOOR



FIRST FLOOR

# 3 - LEVEL TOWNHOUSE

TH-2 - 3-BEDROOM - 6PLEX  
 TH-2 - 3-BEDROOM - 6PLEX - END - 3BD(M)  
 TOTAL AREA = 309.06 SQM (3327 SQFT)



GROUND FLOOR



FIRST FLOOR



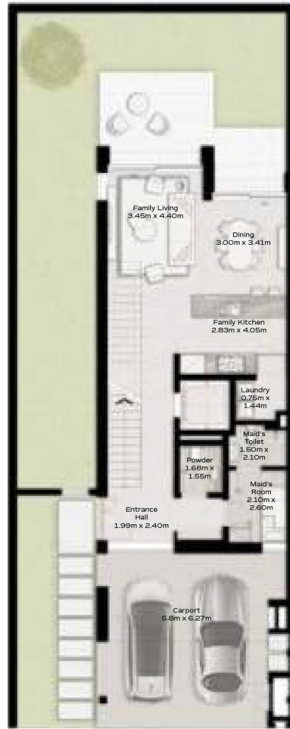
SECOND FLOOR

# 3 - LEVEL TOWNHOUSE

TH-3 - 3-BEDROOM - 4PLEX

TH-3 - 3-BEDROOM - 4PLEX - END - 3BD(M)

TOTAL AREA = 309.06 SQM (3327 SQFT)



GROUND FLOOR



FIRST FLOOR



SECOND FLOOR

# 2 - LEVEL TOWNHOUSE

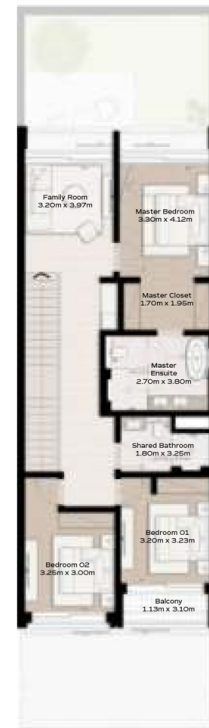
TH-1 - 3-BEDROOM - 6PLEX

TH-1 - 3-BEDROOM - 6PLEX - MIDDLE - 3BA(M)

TOTAL AREA = 258.07 SQM (2778 SQFT)



GROUND FLOOR



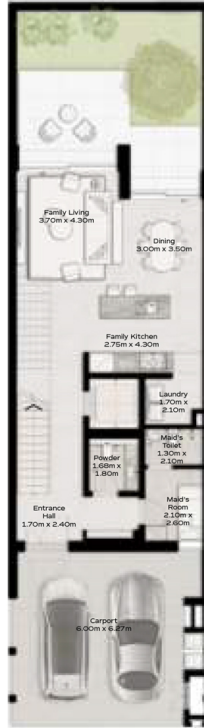
FIRST FLOOR

# 3 - LEVEL TOWNHOUSE

TH-2 - 3-BEDROOM - 6PLEX

TH-2 - 3-BEDROOM - 6PLEX - MIDDLE - 3BC(M)

TOTAL AREA = 314.17 SQM (3382 SQFT)



GROUND FLOOR



FIRST FLOOR



SECOND FLOOR