

Nad Al Sheba Gardens Phase 5 - Townhouse

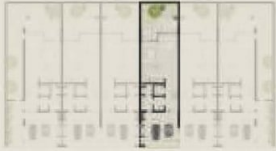
2-LEVEL TOWNHOUSE

NAD AL SHEBA
GARDENS

TH-1 - 3 BEDROOM - 6PLEX

(TH-1 - 3 BEDROOM - 6PLEX - MIDDLE - 3BA)

TOTAL AREA = 261.39 SQM (2,813.58 SQFT)



GROUND FLOOR

FIRST FLOOR

2-LEVEL TOWNHOUSE

NAD AL SHEBA
GARDENS

TH-1 - 3 BEDROOM - 6PLEX

(TH-1 - 3 BEDROOM - 6PLEX - END - 3BE)

TOTAL AREA = 258.35 SQM (2,780.86 SQFT)



2-LEVEL TOWNHOUSE

NAD AL SHEBA
GARDENS

TH-1 - 3 BEDROOM - 6PLEX

(TH-1 - 3 BEDROOM - 6PLEX - END - 3BB (M))

TOTAL AREA = 258.35 SQM (2,780.86 SQFT)



GROUND FLOOR

FIRST FLOOR

3-LEVEL TOWNHOUSE

NAD AL SHEBA
GARDENS

TH-4 - 3 BEDROOM - 6PLEX

(TH-4 - 3 BEDROOM - 6PLEX - END - 3BD)

TOTAL AREA = 304.12 SQM (3,273.52 SQFT)



GROUND FLOOR

FIRST FLOOR

SECOND FLOOR

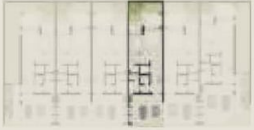
3-LEVEL TOWNHOUSE

NAD AL SHEBA
GARDENS

TH-4 - 3 BEDROOM - 6PLEX

(TH-4 - 3 BEDROOM - 6PLEX - MIDDLE - 3BC)

TOTAL AREA = 310.08 SQM (3,337.67 SQFT)



GROUND FLOOR



FIRST FLOOR



SECOND FLOOR

3-LEVEL TOWNHOUSE

NAD AL SHEBA
GARDENS

TH-3 - 3 BEDROOM - 4PLEX

(TH-3 - 3 BEDROOM - 4PLEX - MIDDLE - 3BC)

TOTAL AREA = 310.08 SQM (3,337.67 SQFT)



GROUND FLOOR



FIRST FLOOR



SECOND FLOOR

3-LEVEL TOWNHOUSE

NAD AL SHEBA
GARDENS

TH-2 - 3 BEDROOM - 6 PLEX

(TH-2 - 3 BEDROOM - 6 PLEX - MIDDLE - 3BC)

TOTAL AREA = 310.08 SQM (3,337.67 SQFT)



GROUND FLOOR



FIRST FLOOR



SECOND FLOOR

3-LEVEL TOWNHOUSE

NAD AL SHEBA
GARDENS

TH-2 - 3 BEDROOM - 6 PLEX

(TH-2 - 3 BEDROOM - 6 PLEX - MIDDLE - 3BC (M))

TOTAL AREA = 310.08 SQM (3,337.67 SQFT)



GROUND FLOOR



FIRST FLOOR



SECOND FLOOR

3-LEVEL TOWNHOUSE

NAD AL SHEBA
GARDENS

TH-3 - 3 BEDROOM - 4PLEX

(TH-3 - 3 BEDROOM - 4PLEX - MIDDLE - 3BC (M))

TOTAL AREA = 310.08 SQM (3,337.67 SQFT)



GROUND FLOOR



FIRST FLOOR



SECOND FLOOR

3-LEVEL TOWNHOUSE

NAD AL SHEBA
GARDENS

TH-2 - 3 BEDROOM - 6PLEX

(TH-2 - 3 BEDROOM - 6PLEX - END - 3BD (M))

TOTAL AREA = 304.12 SQM (3,273.52 SQFT)



GROUND FLOOR

FIRST FLOOR

SECOND FLOOR

3-LEVEL TOWNHOUSE

NAD AL SHEBA
GARDENS

TH-4 - 3 BEDROOM - 6PLEX

(TH-4 - 3 BEDROOM - 6PLEX - END - 3BD (M))

TOTAL AREA = 304.12 SQM (3,273.52 SQFT)



GROUND FLOOR

FIRST FLOOR

SECOND FLOOR

3-LEVEL TOWNHOUSE

NAD AL SHEBA
GARDENS

TH-4 - 3 BEDROOM - 6PLEX

(TH-4 - 3 BEDROOM - 6PLEX - MIDDLE - 3BC (M))

TOTAL AREA = 310.08 SQM (3,337.67 SQFT)



GROUND FLOOR

OOR



FIRST FLOOR



SECOND FLOOR

SE