

Naya at District One - Apartment

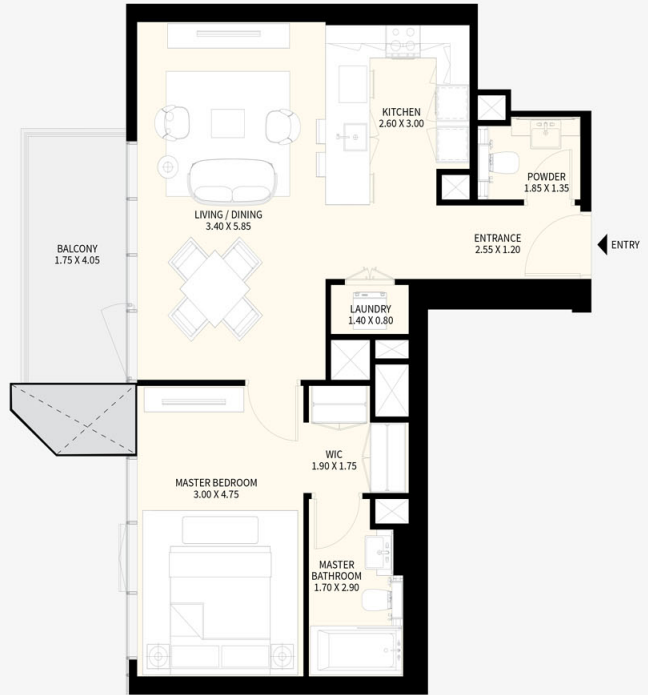
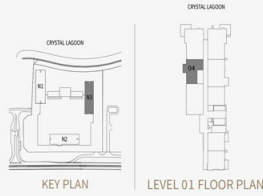
NAYA
AT DISTRICT ONE

MOHAMMED BIN RASHID
AL MAKTUM CITY

NAYA 3

1 BEDROOM
APARTMENT 04
LEVEL 01

SUITE AREA	65.83	SQ.M.	709	SQ.FT
BALCONY AREA	7.86	SQ.M.	84	SQ.FT
TOTAL AREA	73.69	SQ.M.	793	SQ.FT



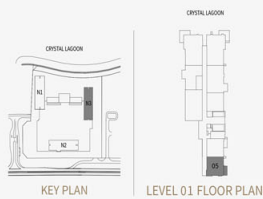
NAYA
AT DISTRICT ONE

MOHAMMED BIN RASHID
AL MAKTUM CITY

NAYA 3

1 BEDROOM
APARTMENT 05
LEVEL 01

SUITE AREA	66.64	SQ.M.	717	SQ.FT
BALCONY AREA	7.36	SQ.M.	80	SQ.FT
TOTAL AREA	74.00	SQ.M.	797	SQ.FT



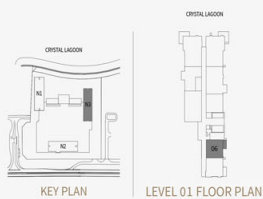
NAYA 3

1 BEDROOM
APARTMENT 06
LEVEL 01

SUITE AREA 66.17 SQ.M. 712 SQ.FT

BALCONY AREA 7.19 SQ.M. 78 SQ.FT

TOTAL AREA 73.36 SQ.M. 790 SQ.FT



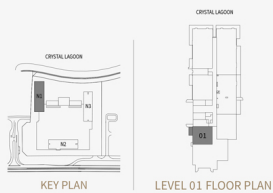
NAYA 1

1 BEDROOM
APARTMENT 01
LEVEL 01

SUITE AREA 74.08 SQ.M. 797 SQ.FT

BALCONY AREA 7.59 SQ.M. 82 SQ.FT

TOTAL AREA 81.67 SQ.M. 879 SQ.FT

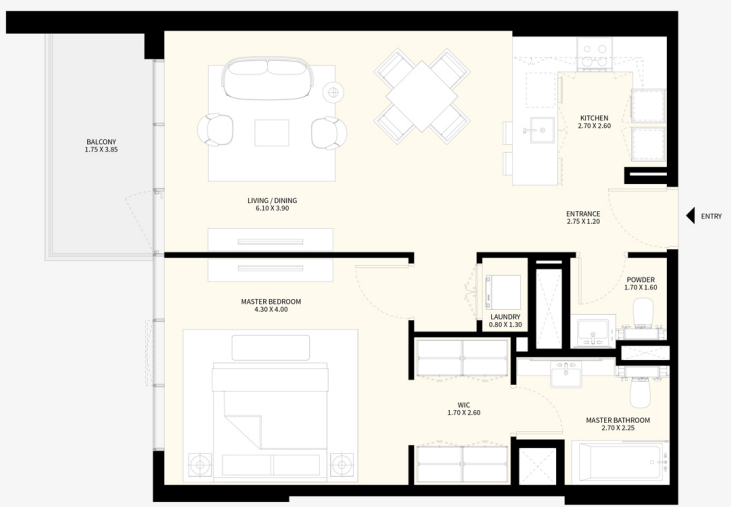
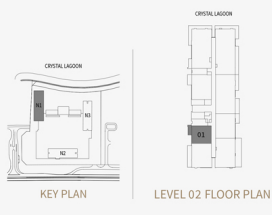


DISCLAIMER: All measurements, dimensions, coordinates and drawings, given as the Floor Plans in the literature are approximate and provided only for the purpose of marketing, illustration, information and general guidance as such drawings are not to scale. All the rooms, sizes, locations, orientations, dimensions, fixtures, fittings, finishes and specifications (including materials for, placement, size of rooms, windows, doors, balcony, furniture's inbuilt wardrobe etc.) provided in the floor plans may vary as the same have been taken from concept designs prior to the actual development/construction and therefore their accuracy in relation to actual construction cannot be confirmed. Hence, we make no guarantee, warranty or representation as to the accuracy and completeness of the floor plan information as changes may be made during the development process, without notice. Always refer to latest IFC design available in the sales office for the most accurate representation of all construction details.

NAYA 1

1 BEDROOM
APARTMENT 01
LEVEL 02

SUITE AREA	73.93	SQ.M.	796	SQ.FT
BALCONY AREA	7.59	SQ.M.	81	SQ.FT
TOTAL AREA	81.52	SQ.M.	877	SQ.FT



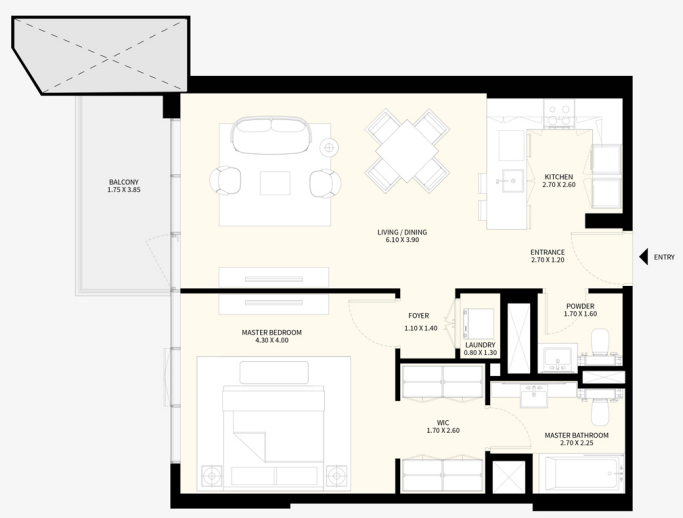
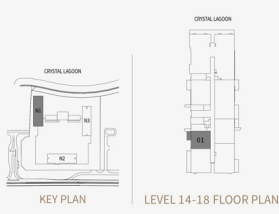
DISCLAIMER: All measurements, dimensions, coordinates and drawings, given as the Floor Plans in the literature are approximate and provided only for the purpose of marketing, illustration, information and general guidance as such drawings are not to scale. All the rooms, sizes, locations, orientations, dimensions, fixtures, fittings, finishes and specifications (including materials for, placement, size of rooms, windows, doors, balcony, furniture's inbuilt wardrobe etc.) provided in the floor plans may vary as the same have been taken from concept designs prior the actual development/construction and therefore their accuracy in relation to actual construction cannot be confirmed. Hence, we make no guarantee, warranty or representation as to the accuracy and completeness of the floor plan information as changes may be made during the development process, without notice. Always refer to latest IFC design available in the sales office for the most accurate representation of all construction details.

STR/PUP/DP/13072023

NAYA 1

1 BEDROOM
APARTMENT 01
LEVEL 14-18 TYPICAL

SUITE AREA	73.88	SQ.M.	795	SQ.FT
BALCONY AREA	7.59	SQ.M.	82	SQ.FT
TOTAL AREA	81.47	SQ.M.	877	SQ.FT



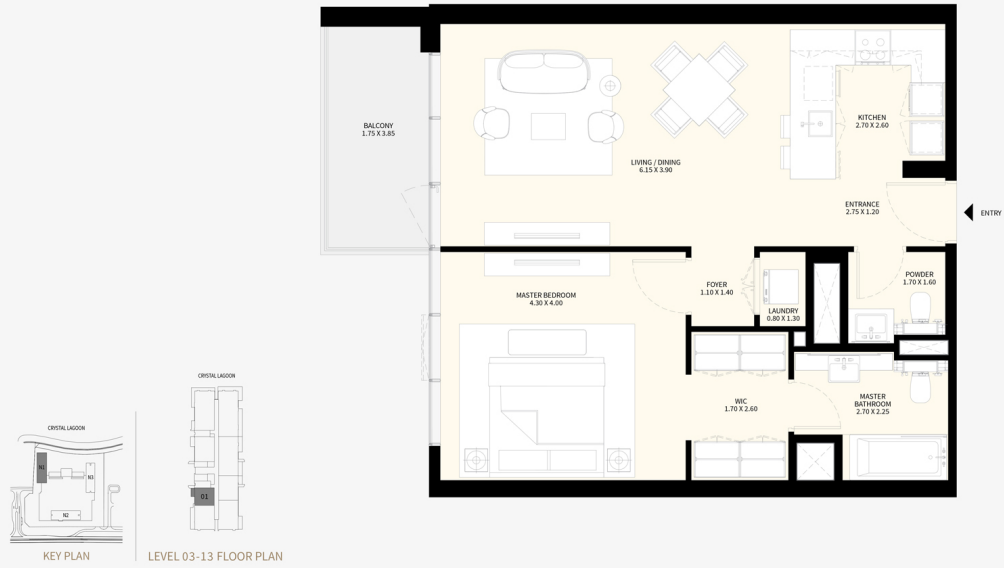
DISCLAIMER: All measurements, dimensions, coordinates and drawings, given as the Floor Plans in the literature are approximate and provided only for the purpose of marketing, illustration, information and general guidance as such drawings are not to scale. All the rooms, sizes, locations, orientations, dimensions, fixtures, fittings, finishes and specifications (including materials for, placement, size of rooms, windows, doors, balcony, furniture's inbuilt wardrobe etc.) provided in the floor plans may vary as the same have been taken from concept designs prior the actual development/construction and therefore their accuracy in relation to actual construction cannot be confirmed. Hence, we make no guarantee, warranty or representation as to the accuracy and completeness of the floor plan information as changes may be made during the development process, without notice. Always refer to latest IFC design available in the sales office for the most accurate representation of all construction details.

STR/PUP/DP/13072023

NAYA 1

1 BEDROOM
APARTMENT 01
LEVEL 03-13 TYPICAL

SUITE AREA	73.88	SQ.M.	795	SQ.FT
BALCONY AREA	7.58	SQ.M.	82	SQ.FT
TOTAL AREA	81.46	SQ.M.	877	SQ.FT



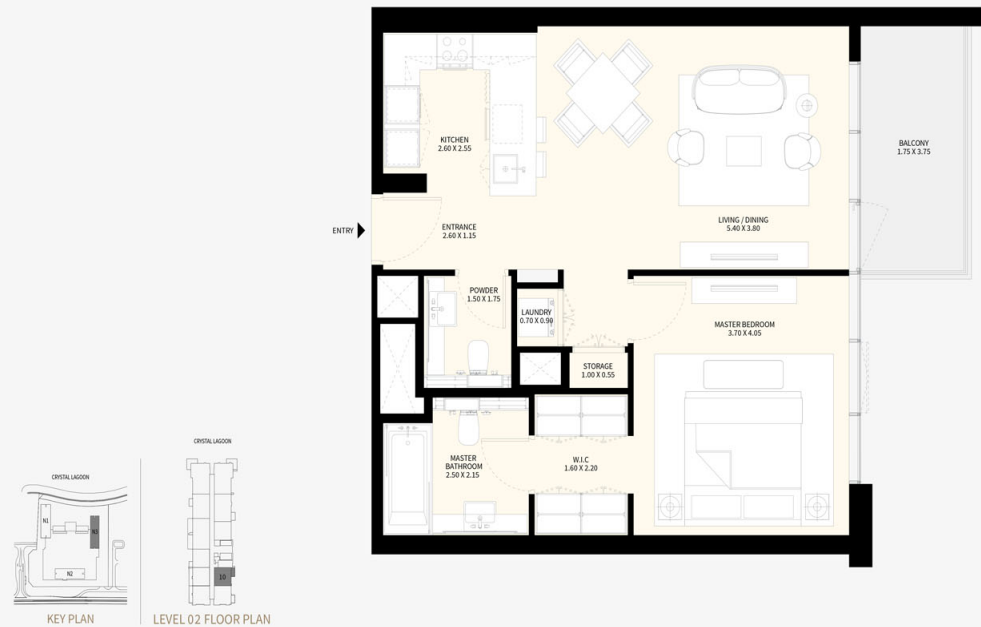
DISCLAIMER: All measurements, dimensions, coordinates and drawings, given as the Floor Plans in the literature are approximate and provided only for the purpose of marketing. Illustration, information and general guidance as such drawings are not to scale. All the rooms, sizes, locations, orientations, dimensions, fixtures, fittings, finishes and specifications (including materials for, placement, size of rooms, windows, doors, balcony, furniture's inbuilt wardrobe etc.) provided in the floor plans may vary as the same have been taken from concept designs prior to the actual development/construction and therefore their accuracy in relation to actual construction cannot be confirmed. Hence, we make no guarantee, warranty or representation as to the accuracy and completeness of the floor plan information as changes may be made during the development process, without notice. Always refer to latest IFC design available in the sales office for the most accurate representation of all construction details.

STR/PUP/DP/13072023

NAYA 3

1 BEDROOM
APARTMENT 10
LEVEL 02

SUITE AREA	66.17	SQ.M.	712	SQ.FT
BALCONY AREA	7.19	SQ.M.	78	SQ.FT
TOTAL AREA	73.36	SQ.M.	790	SQ.FT



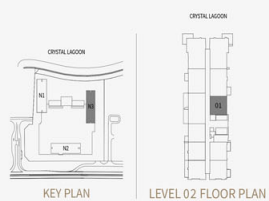
KEY PLAN | LEVEL 02 FLOOR PLAN



NAYA 3

1 BEDROOM
APARTMENT 01
LEVEL 02

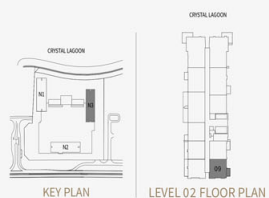
SUITE AREA	66.44	SQ.M.	715	SQ.FT
BALCONY AREA	0.00	SQ.M.	00	SQ.FT
TOTAL AREA	66.44	SQ.M.	715	SQ.FT



NAYA 3

1 BEDROOM
APARTMENT 09
LEVEL 02

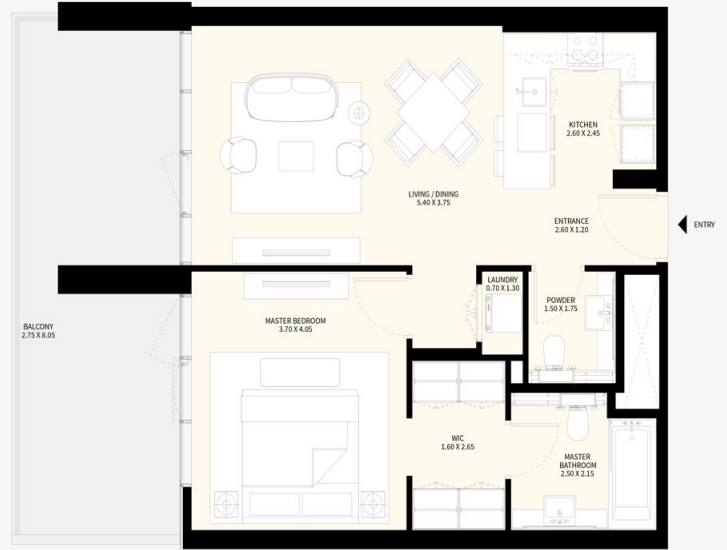
SUITE AREA	66.77	SQ.M.	719	SQ.FT
BALCONY AREA	7.36	SQ.M.	79	SQ.FT
TOTAL AREA	74.13	SQ.M.	798	SQ.FT



NAYA 3

1 BEDROOM
APARTMENT 07
LEVEL 02

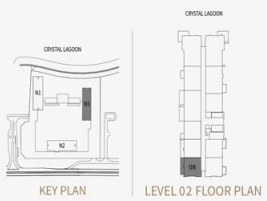
SUITE AREA	66.11	SQ.M.	712	SQ.FT
BALCONY AREA	22.97	SQ.M.	247	SQ.FT
TOTAL AREA	89.08	SQ.M.	959	SQ.FT



NAYA 3

1 BEDROOM
APARTMENT 08
LEVEL 02

SUITE AREA	66.74	SQ.M.	718	SQ.FT
BALCONY AREA	22.25	SQ.M.	240	SQ.FT
TOTAL AREA	88.99	SQ.M.	958	SQ.FT



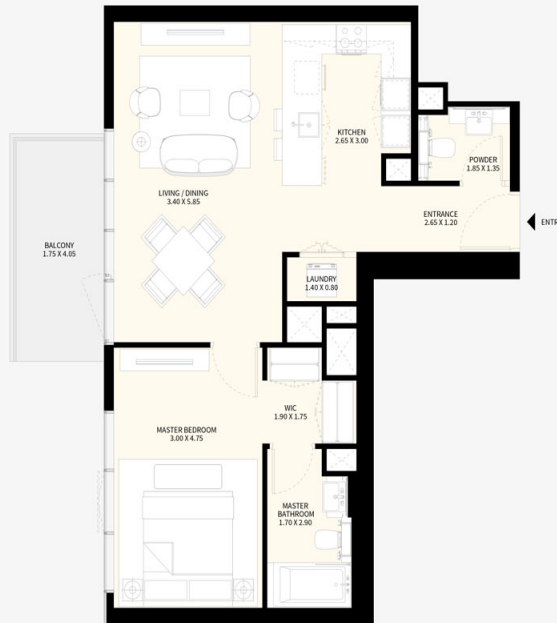
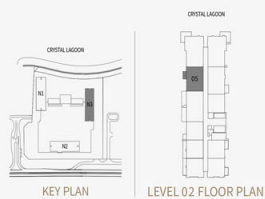
NAYA 3

1 BEDROOM
APARTMENT 05
LEVEL 02

SUITE AREA 65.82 SQ.M. 708 SQ.FT

BALCONY AREA 7.86 SQ.M. 85 SQ.FT

TOTAL AREA 73.68 SQ.M. 793 SQ.FT



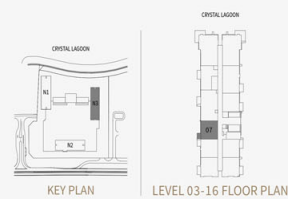
NAYA 3

1 BEDROOM
APARTMENT 07
LEVEL 03 - 16 TYPICAL

SUITE AREA 65.63 SQ.M. 706 SQ.FT

BALCONY AREA 4.96 SQ.M. 54 SQ.FT

TOTAL AREA 70.59 SQ.M. 760 SQ.FT



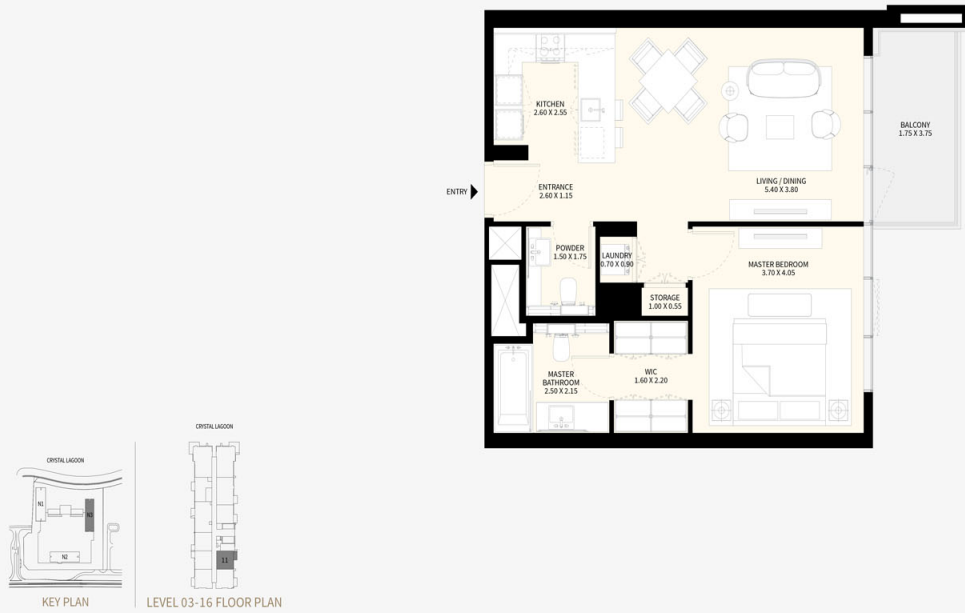
NAYA 3

1 BEDROOM
APARTMENT 11
LEVEL 03 - 16 TYPICAL

SUITE AREA 66.16 SQ.M. 712 SQ.FT

BALCONY AREA 7.21 SQ.M. 78 SQ.FT

TOTAL AREA 73.37 SQ.M. 790 SQ.FT



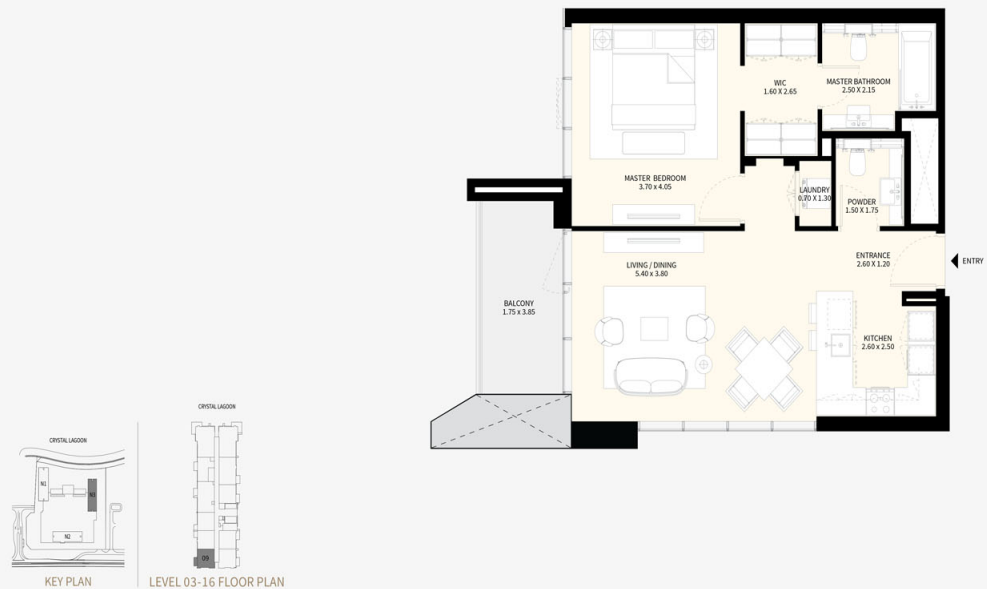
NAYA 3

1 BEDROOM
APARTMENT 09
LEVEL 03 - 16 TYPICAL

SUITE AREA 66.74 SQ.M. 718 SQ.FT

BALCONY AREA 7.69 SQ.M. 83 SQ.FT

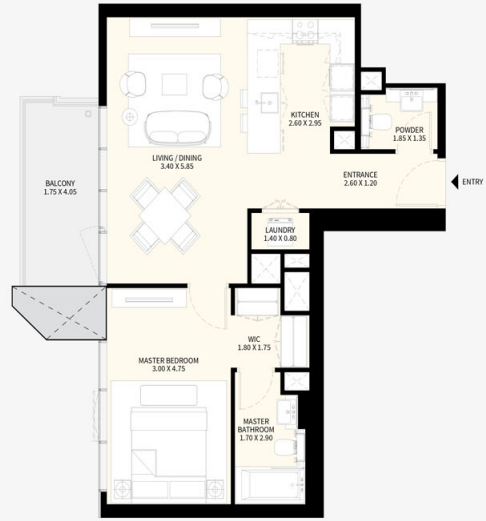
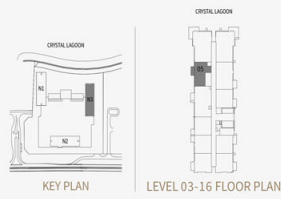
TOTAL AREA 74.43 SQ.M. 801 SQ.FT



NAYA 3

1 BEDROOM
APARTMENT 05
LEVEL 03 - 16 TYPICAL

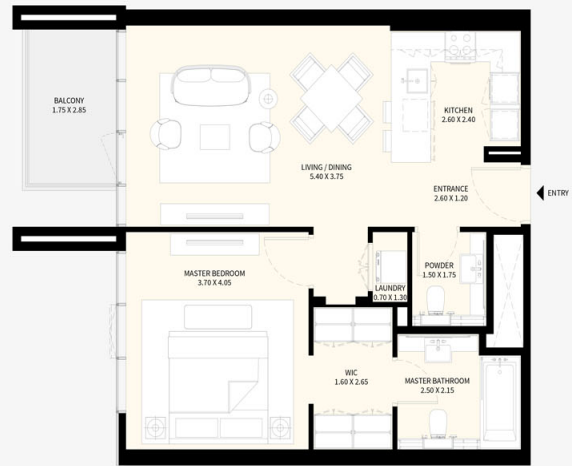
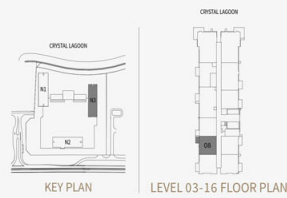
SUITE AREA	65.82	SQ.M.	708	SQ.FT
BALCONY AREA	7.86	SQ.M.	85	SQ.FT
TOTAL AREA	73.68	SQ.M.	793	SQ.FT



NAYA 3

1 BEDROOM
APARTMENT 08
LEVEL 03 - 16 TYPICAL

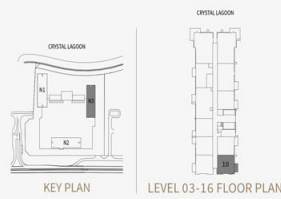
SUITE AREA	66.11	SQ.M.	712	SQ.FT
BALCONY AREA	5.69	SQ.M.	61	SQ.FT
TOTAL AREA	71.80	SQ.M.	773	SQ.FT



NAYA 3

1 BEDROOM
APARTMENT 10
LEVEL 03 - 16 TYPICAL

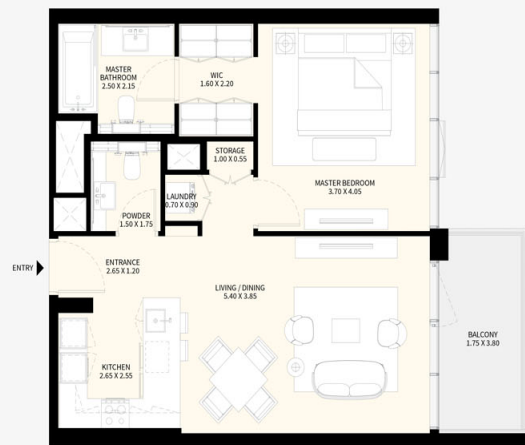
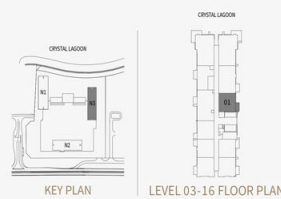
SUITE AREA	66.76	SQ.M.	719	SQ.FT
BALCONY AREA	7.36	SQ.M.	79	SQ.FT
TOTAL AREA	74.12	SQ.M.	798	SQ.FT



NAYA 3

1 BEDROOM
APARTMENT 01
LEVEL 03 - 16 TYPICAL

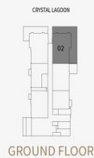
SUITE AREA	66.43	SQ.M.	715	SQ.FT
BALCONY AREA	7.27	SQ.M.	78	SQ.FT
TOTAL AREA	73.70	SQ.M.	793	SQ.FT



NAYA 3

2 BEDROOM
APARTMENT 02
GROUND FLOOR

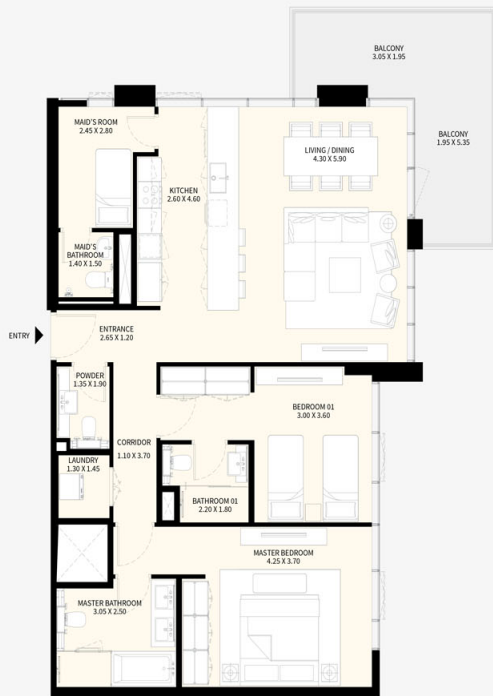
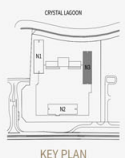
SUITE AREA	116.15 SQ.M.	1,250 SQ.FT
BALCONY AREA	85.55 SQ.M.	921 SQ.FT
TOTAL AREA	201.70 SQ.M.	2,171 SQ.FT



NAYA 3

2 BEDROOM
APARTMENT 02
LEVEL 01

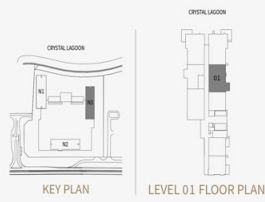
SUITE AREA	116.14 SQ.M.	1,250 SQ.FT
BALCONY AREA	17.07 SQ.M.	184 SQ.FT
TOTAL AREA	133.21 SQ.M.	1,434 SQ.FT



NAYA 3

2 BEDROOM
APARTMENT 01
LEVEL 01

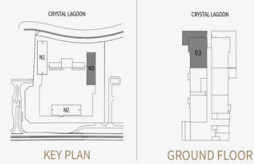
SUITE AREA	98.05	SQ.M.	1,055	SQ.FT
BALCONY AREA	7.75	SQ.M.	84	SQ.FT
TOTAL AREA	105.80	SQ.M.	1,139	SQ.FT



NAYA 3

2 BEDROOM
APARTMENT 03
GROUND FLOOR

SUITE AREA	116.51	SQ.M.	1,254	SQ.FT
BALCONY AREA	47.42	SQ.M.	511	SQ.FT
TOTAL AREA	163.93	SQ.M.	1,765	SQ.FT



NAYA 3

2 BEDROOM
APARTMENT 03
LEVEL 01

SUITE AREA 116.50 SQ.M. 1,254 SQ.FT

BALCONY AREA 17.07 SQ.M. 184 SQ.FT

TOTAL AREA 133.57 SQ.M. 1,438 SQ.FT



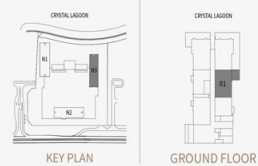
NAYA 3

2 BEDROOM
APARTMENT 01
GROUND FLOOR

SUITE AREA 98.05 SQ.M. 1,055 SQ.FT

BALCONY AREA 18.12 SQ.M. 195 SQ.FT

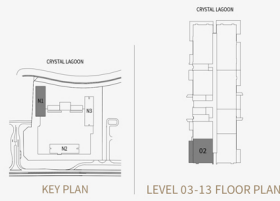
TOTAL AREA 116.17 SQ.M. 1,250 SQ.FT



NAYA 1

2 BEDROOM
APARTMENT 02
LEVEL 03-13 TYPICAL

SUITE AREA	100.45 SQ.M.	1,081 SQ.FT
BALCONY AREA	20.68 SQ.M.	223 SQ.FT
TOTAL AREA	121.13 SQ.M.	1,304 SQ.FT



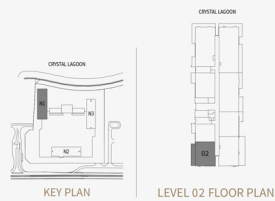
DISCLAIMER: All measurements, dimensions, coordinates and drawings, given as the Floor Plans in the literature are approximate and provided only for the purpose of marketing, illustration, information and general guidance as such drawings are not to scale. All the rooms, sizes, locations, orientations, dimensions, fixtures, fittings, finishes and specifications (including materials for, placement, size of rooms, windows, doors, balcony, furniture's inbuilt wardrobe etc.) provided in the floor plans may vary as the same have been taken from concept designs prior the actual development/construction and therefore their accuracy in relation to actual construction cannot be confirmed. Hence, we make no guarantee, warranty or representation as to the accuracy and completeness of the floor plan information as changes may be made during the development process, without notice. Always refer to latest IFC design available in the sales office for the most accurate representation of all construction details.

STR/PUP/DP/13072023

NAYA 1

2 BEDROOM
APARTMENT 02
LEVEL 02

SUITE AREA	100.20 SQ.M.	1,079 SQ.FT
BALCONY AREA	20.68 SQ.M.	222 SQ.FT
TOTAL AREA	120.88 SQ.M.	1,301 SQ.FT



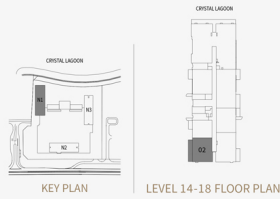
DISCLAIMER: All measurements, dimensions, coordinates and drawings, given as the Floor Plans in the literature are approximate and provided only for the purpose of marketing, illustration, information and general guidance as such drawings are not to scale. All the rooms, sizes, locations, orientations, dimensions, fixtures, fittings, finishes and specifications (including materials for, placement, size of rooms, windows, doors, balcony, furniture's inbuilt wardrobe etc.) provided in the floor plans may vary as the same have been taken from concept designs prior the actual development/construction and therefore their accuracy in relation to actual construction cannot be confirmed. Hence, we make no guarantee, warranty or representation as to the accuracy and completeness of the floor plan information as changes may be made during the development process, without notice. Always refer to latest IFC design available in the sales office for the most accurate representation of all construction details.

STR/PUP/DP/13072023

NAYA 1

2 BEDROOM
APARTMENT 02
LEVEL 14-18 TYPICAL

SUITE AREA	100.42 SQ.M.	1,081 SQ.FT
BALCONY AREA	20.68 SQ.M.	223 SQ.FT
TOTAL AREA	121.10 SQ.M.	1,304 SQ.FT



DISCLAIMER: All measurements, dimensions, coordinates and drawings, given as the Floor Plans in the literature are approximate and provided only for the purpose of marketing, illustration, information and general guidance as such drawings are not to scale. All the rooms, sizes, locations, orientations, dimensions, fixtures, fittings, finishes and specifications (including materials for, placement, size of rooms, windows, doors, balcony, furniture's inbuilt wardrobe etc.) provided in the floor plans may vary as the same have been taken from concept designs prior the actual development/construction and therefore their accuracy in relation to actual construction cannot be confirmed. Hence, we make no guarantee, warranty or representation as to the accuracy and completeness of the floor plan information as changes may be made during the development process, without notice. Always refer to latest IFC design available in the sales office for the most accurate representation of all construction details.

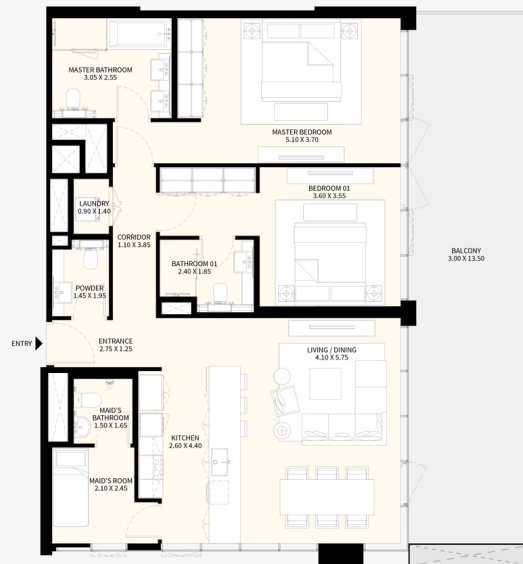
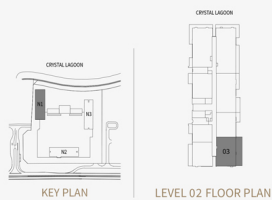
STR/PUP/DP/13072023

MEYDAN

NAYA 1

2 BEDROOM
APARTMENT 03
LEVEL 02

SUITE AREA	120.82 SQ.M.	1,300 SQ.FT
BALCONY AREA	41.74 SQ.M.	450 SQ.FT
TOTAL AREA	162.56 SQ.M.	1,750 SQ.FT



DISCLAIMER: All measurements, dimensions, coordinates and drawings, given as the Floor Plans in the literature are approximate and provided only for the purpose of marketing, illustration, information and general guidance as such drawings are not to scale. All the rooms, sizes, locations, orientations, dimensions, fixtures, fittings, finishes and specifications (including materials for, placement, size of rooms, windows, doors, balcony, furniture's inbuilt wardrobe etc.) provided in the floor plans may vary as the same have been taken from concept designs prior the actual development/construction and therefore their accuracy in relation to actual construction cannot be confirmed. Hence, we make no guarantee, warranty or representation as to the accuracy and completeness of the floor plan information as changes may be made during the development process, without notice. Always refer to latest IFC design available in the sales office for the most accurate representation of all construction details.

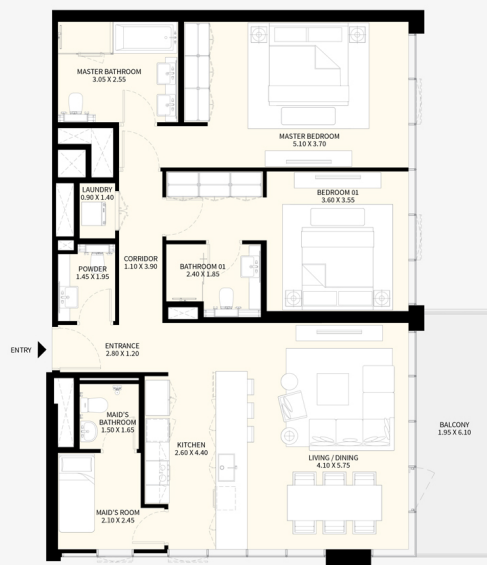
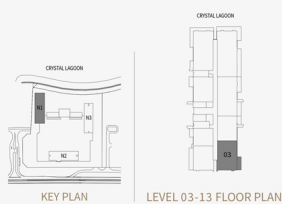
STR/PUP/DP/13072023

MEYDAN

NAYA 1

2 BEDROOM
APARTMENT 03
LEVEL 03-13 TYPICAL

SUITE AREA	120.83 SQ.M.	1,301 SQ.FT
BALCONY AREA	12.42 SQ.M.	133 SQ.FT
TOTAL AREA	133.25 SQ.M.	1,434 SQ.FT



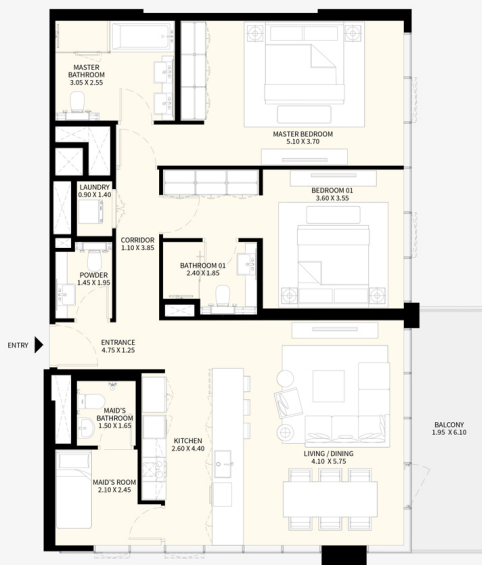
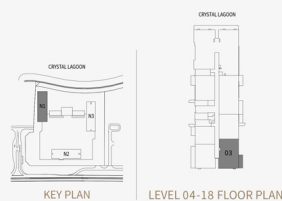
DISCLAIMER: All measurements, dimensions, coordinates and drawings, given as the Floor Plans in the literature are approximate and provided only for the purpose of marketing, illustration, information and general guidance as such drawings are not to scale. All the rooms, sizes, locations, orientations, dimensions, fixtures, fittings, finishes and specifications (including materials for, placement, size of rooms, windows, doors, balcony, furniture's inbuilt wardrobe etc.) provided in the floor plans may vary as the same have been taken from concept designs prior to the actual development/construction and therefore their accuracy in relation to actual construction cannot be confirmed. Hence, we make no guarantee, warranty or representation as to the accuracy and completeness of the floor plan information as changes may be made during the development process, without notice. Always refer to latest IFC design available in the sales office for the most accurate representation of all construction details.

STR/PUP/DP/13072023

NAYA 1

2 BEDROOM
APARTMENT 03
LEVEL 14-18 TYPICAL

SUITE AREA	120.83 SQ.M.	1,301 SQ.FT
BALCONY AREA	12.42 SQ.M.	133 SQ.FT
TOTAL AREA	133.25 SQ.M.	1,434 SQ.FT



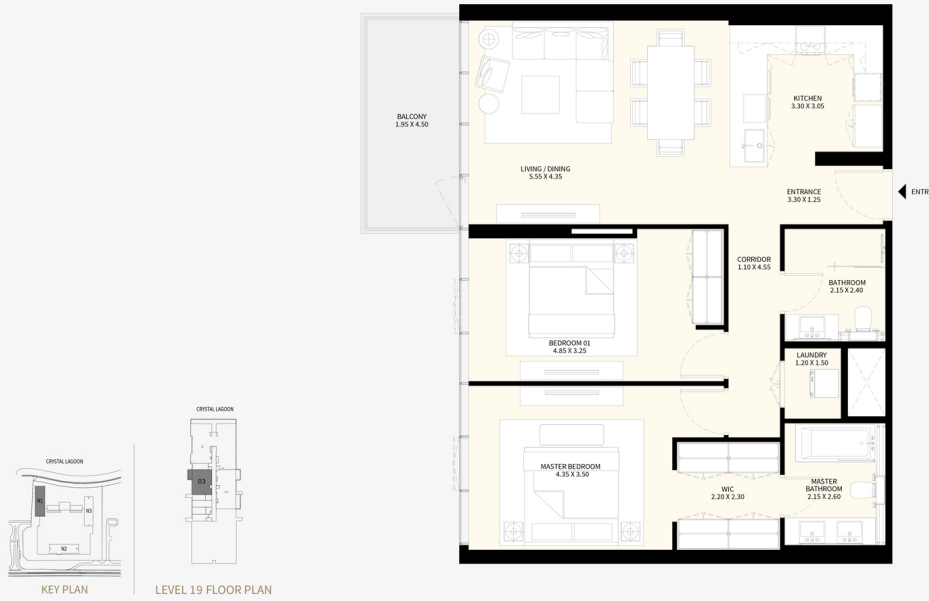
DISCLAIMER: All measurements, dimensions, coordinates and drawings, given as the Floor Plans in the literature are approximate and provided only for the purpose of marketing, illustration, information and general guidance as such drawings are not to scale. All the rooms, sizes, locations, orientations, dimensions, fixtures, fittings, finishes and specifications (including materials for, placement, size of rooms, windows, doors, balcony, furniture's inbuilt wardrobe etc.) provided in the floor plans may vary as the same have been taken from concept designs prior to the actual development/construction and therefore their accuracy in relation to actual construction cannot be confirmed. Hence, we make no guarantee, warranty or representation as to the accuracy and completeness of the floor plan information as changes may be made during the development process, without notice. Always refer to latest IFC design available in the sales office for the most accurate representation of all construction details.

STR/PUP/DP/13072023

NAYA 1

2 BEDROOM
APARTMENT 03
LEVEL 19

SUITE AREA	104.83 SQ.M.	1,128 SQ.FT
BALCONY AREA	9.06 SQ.M.	98 SQ.FT
TOTAL AREA	113.89 SQ.M.	1,226 SQ.FT



DISCLAIMER: All measurements, dimensions, coordinates and drawings, given as the Floor Plans in the literature are approximate and provided only for the purpose of marketing, illustration, information and general guidance as such drawings are not to scale. All the rooms, sizes, locations, orientations, dimensions, fixtures, fittings, finishes and specifications (including materials for, placement, size of rooms, windows, doors, balcony, furniture's inbuilt wardrobe etc.) provided in the floor plans may vary as the same have been taken from concept designs prior to the actual development/construction and therefore their accuracy in relation to actual construction cannot be confirmed. Hence, we make no guarantee, warranty or representation as to the accuracy and completeness of the floor plan information as changes may be made during the development process, without notice. Always refer to latest IFC design available in the sales office for the most accurate representation of all construction details.

STR/PUP/DP/13072023

NAYA 1

2 BEDROOM
APARTMENT 04
GROUND FLOOR

SUITE AREA	104.85 SQ.M.	1,129 SQ.FT
BALCONY AREA	35.21 SQ.M.	379 SQ.FT
TOTAL AREA	140.06 SQ.M.	1,508 SQ.FT



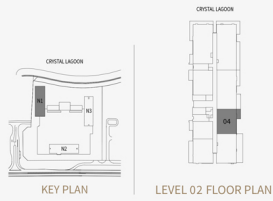
DISCLAIMER: All measurements, dimensions, coordinates and drawings, given as the Floor Plans in the literature are approximate and provided only for the purpose of marketing, illustration, information and general guidance as such drawings are not to scale. All the rooms, sizes, locations, orientations, dimensions, fixtures, fittings, finishes and specifications (including materials for, placement, size of rooms, windows, doors, balcony, furniture's inbuilt wardrobe etc.) provided in the floor plans may vary as the same have been taken from concept designs prior to the actual development/construction and therefore their accuracy in relation to actual construction cannot be confirmed. Hence, we make no guarantee, warranty or representation as to the accuracy and completeness of the floor plan information as changes may be made during the development process, without notice. Always refer to latest IFC design available in the sales office for the most accurate representation of all construction details.

STR/PUP/DP/13072023

NAYA 1

2 BEDROOM
APARTMENT 04
LEVEL 02

SUITE AREA	103.10 SQ.M.	1,110 SQ.FT
BALCONY AREA	8.78 SQ.M.	94 SQ.FT
TOTAL AREA	111.88 SQ.M.	1,204 SQ.FT



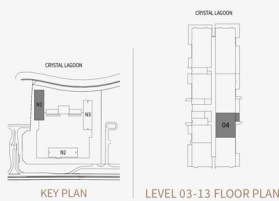
DISCLAIMER: All measurements, dimensions, coordinates and drawings, given as the Floor Plans in the literature are approximate and provided only for the purpose of marketing, illustration, information and general guidance as such drawings are not to scale. All the rooms, sizes, locations, orientations, dimensions, fixtures, fittings, finishes and specifications (including materials for, placement, size of rooms, windows, doors, balcony, furniture's inbuilt wardrobe etc.) provided in the floor plans may vary as the same have been taken from concept designs prior the actual development/construction and therefore their accuracy in relation to actual construction cannot be confirmed. Hence, we make no guarantee, warranty or representation as to the accuracy and completeness of the floor plan information as changes may be made during the development process, without notice. Always refer to latest IFC design available in the sales office for the most accurate representation of all construction details.

STR/PUP/DP/13072023

NAYA 1

2 BEDROOM
APARTMENT 04
LEVEL 03-13 TYPICAL

SUITE AREA	103.19 SQ.M.	1,111 SQ.FT
BALCONY AREA	8.68 SQ.M.	93 SQ.FT
TOTAL AREA	111.87 SQ.M.	1,204 SQ.FT



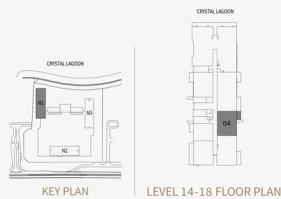
DISCLAIMER: All measurements, dimensions, coordinates and drawings, given as the Floor Plans in the literature are approximate and provided only for the purpose of marketing, illustration, information and general guidance as such drawings are not to scale. All the rooms, sizes, locations, orientations, dimensions, fixtures, fittings, finishes and specifications (including materials for, placement, size of rooms, windows, doors, balcony, furniture's inbuilt wardrobe etc.) provided in the floor plans may vary as the same have been taken from concept designs prior the actual development/construction and therefore their accuracy in relation to actual construction cannot be confirmed. Hence, we make no guarantee, warranty or representation as to the accuracy and completeness of the floor plan information as changes may be made during the development process, without notice. Always refer to latest IFC design available in the sales office for the most accurate representation of all construction details.

STR/PUP/DP/13072023

NAYA 1

2 BEDROOM
APARTMENT 04
LEVEL 14-18 TYPICAL

SUITE AREA	103.10 SQ.M.	1,110 SQ.FT
BALCONY AREA	8.78 SQ.M.	94 SQ.FT
TOTAL AREA	111.88 SQ.M.	1,204 SQ.FT



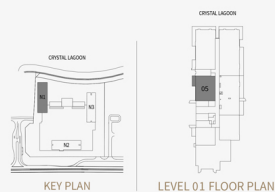
DISCLAIMER: All measurements, dimensions, coordinates and drawings, given as the Floor Plans in the literature are approximate and provided only for the purpose of marketing, illustration, information and general guidance as such drawings are not to scale. All the rooms, sizes, locations, orientations, dimensions, fixtures, fittings, finishes and specifications (including materials for, placement, size of rooms, windows, doors, balcony, furniture's inbuilt wardrobe etc.) provided in the floor plans may vary as the same have been taken from concept designs prior to the actual development/construction and therefore their accuracy in relation to actual construction cannot be confirmed. Hence, we make no guarantee, warranty or representation as to the accuracy and completeness of the floor plan information as changes may be made during the development process, without notice. Always refer to latest IFC design available in the sales office for the most accurate representation of all construction details.

STR/PUP/DP/13072023

NAYA 1

2 BEDROOM
APARTMENT 05
LEVEL 01

SUITE AREA	104.83 SQ.M.	1,128 SQ.FT
BALCONY AREA	9.06 SQ.M.	98 SQ.FT
TOTAL AREA	113.89 SQ.M.	1,226 SQ.FT



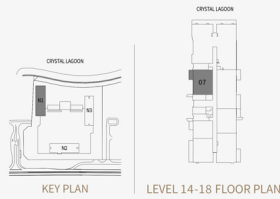
DISCLAIMER: All measurements, dimensions, coordinates and drawings, given as the Floor Plans in the literature are approximate and provided only for the purpose of marketing, illustration, information and general guidance as such drawings are not to scale. All the rooms, sizes, locations, orientations, dimensions, fixtures, fittings, finishes and specifications (including materials for, placement, size of rooms, windows, doors, balcony, furniture's inbuilt wardrobe etc.) provided in the floor plans may vary as the same have been taken from concept designs prior to the actual development/construction and therefore their accuracy in relation to actual construction cannot be confirmed. Hence, we make no guarantee, warranty or representation as to the accuracy and completeness of the floor plan information as changes may be made during the development process, without notice. Always refer to latest IFC design available in the sales office for the most accurate representation of all construction details.

STR/PUP/DP/13072023

NAYA 1

2 BEDROOM
APARTMENT 07
LEVEL 14-18 TYPICAL

SUITE AREA	104.83 SQ.M.	1,128 SQ.FT
BALCONY AREA	9.06 SQ.M.	98 SQ.FT
TOTAL AREA	113.89 SQ.M.	1,226 SQ.FT



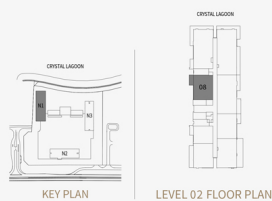
DISCLAIMER: All measurements, dimensions, coordinates and drawings, given as the Floor Plans in the literature are approximate and provided only for the purpose of marketing, illustration, information and general guidance as such drawings are not to scale. All the rooms, sizes, locations, orientations, dimensions, fixtures, fittings, finishes and specifications (including materials for, placement, size of rooms, windows, doors, balcony, furniture's inbuilt wardrobe etc.) provided in the floor plans may vary as the same have been taken from concept designs prior the actual development/construction and therefore their accuracy in relation to actual construction cannot be confirmed. Hence, we make no guarantee, warranty or representation as to the accuracy and completeness of the floor plan information as changes may be made during the development process, without notice. Always refer to latest IFC design available in the sales office for the most accurate representation of all construction details.

STR/PUP/DP/13072023

NAYA 1

2 BEDROOM
APARTMENT 08
LEVEL 02

SUITE AREA	104.83 SQ.M.	1,128 SQ.FT
BALCONY AREA	9.06 SQ.M.	98 SQ.FT
TOTAL AREA	113.89 SQ.M.	1,226 SQ.FT



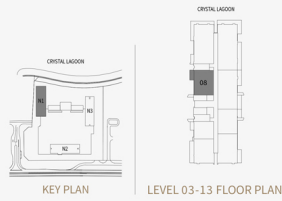
DISCLAIMER: All measurements, dimensions, coordinates and drawings, given as the Floor Plans in the literature are approximate and provided only for the purpose of marketing, illustration, information and general guidance as such drawings are not to scale. All the rooms, sizes, locations, orientations, dimensions, fixtures, fittings, finishes and specifications (including materials for, placement, size of rooms, windows, doors, balcony, furniture's inbuilt wardrobe etc.) provided in the floor plans may vary as the same have been taken from concept designs prior the actual development/construction and therefore their accuracy in relation to actual construction cannot be confirmed. Hence, we make no guarantee, warranty or representation as to the accuracy and completeness of the floor plan information as changes may be made during the development process, without notice. Always refer to latest IFC design available in the sales office for the most accurate representation of all construction details.

STR/PUP/DP/13072023

NAYA 1

2 BEDROOM
APARTMENT 08
LEVEL 03-13 TYPICAL

SUITE AREA	104.83 SQ.M.	1,128 SQ.FT
BALCONY AREA	9.06 SQ.M.	98 SQ.FT
TOTAL AREA	113.89 SQ.M.	1,226 SQ.FT



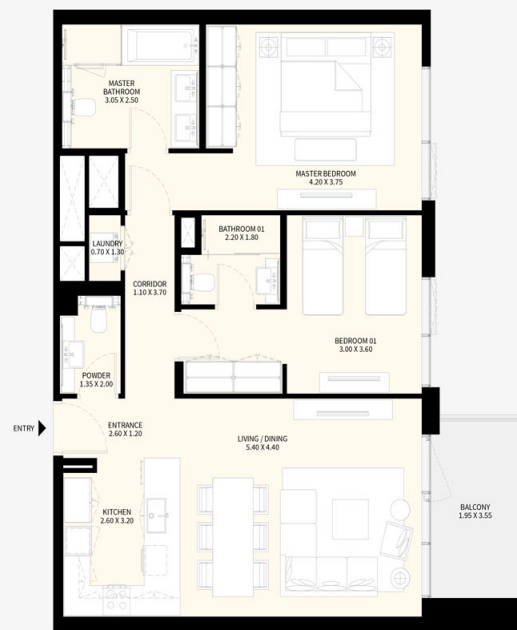
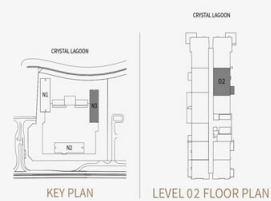
DISCLAIMER: All measurements, dimensions, coordinates and drawings, given as the Floor Plans in the literature are approximate and provided only for the purpose of marketing, illustration, information and general guidance as such drawings are not to scale. All the rooms, sizes, locations, orientations, dimensions, fixtures, fittings, finishes and specifications (including materials for, placement, size of rooms, windows, doors, balcony, furniture's inbuilt wardrobe etc.) provided in the floor plans may vary as the same have been taken from concept designs prior the actual development/construction and therefore their accuracy in relation to actual construction cannot be confirmed. Hence, we make no guarantee, warranty or representation as to the accuracy and completeness of the floor plan information as changes may be made during the development process, without notice. Always refer to latest IFC design available in the sales office for the most accurate representation of all construction details.

STR/PUP/DP/13072023

NAYA 3

2 BEDROOM
APARTMENT 02
LEVEL 02

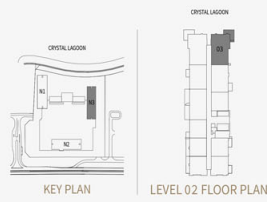
SUITE AREA	97.99 SQ.M.	1,055 SQ.FT
BALCONY AREA	7.75 SQ.M.	83 SQ.FT
TOTAL AREA	105.74 SQ.M.	1,138 SQ.FT



NAYA 3

2 BEDROOM
APARTMENT 03
LEVEL 02

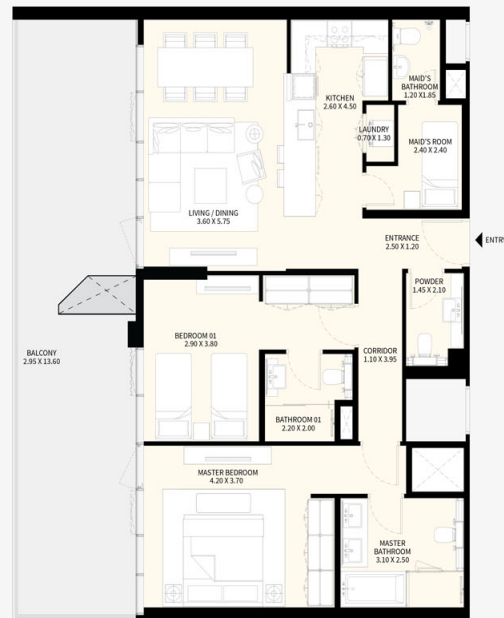
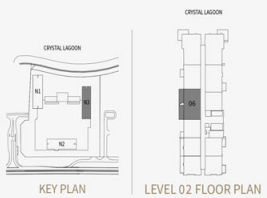
SUITE AREA	116.09 SQ.M.	1,250 SQ.FT
BALCONY AREA	17.16 SQ.M.	184 SQ.FT
TOTAL AREA	133.25 SQ.M.	1,434 SQ.FT



NAYA 3

2 BEDROOM
APARTMENT 06
LEVEL 02

SUITE AREA	107.93 SQ.M.	1,162 SQ.FT
BALCONY AREA	40.66 SQ.M.	437 SQ.FT
TOTAL AREA	148.59 SQ.M.	1,599 SQ.FT



NAYA 3

2 BEDROOM
APARTMENT 04
LEVEL 02

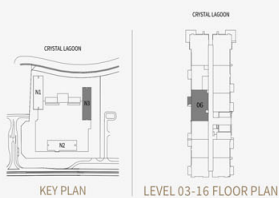
SUITE AREA	116.41 SQ.M.	1,253 SQ.FT
BALCONY AREA	17.16 SQ.M.	185 SQ.FT
TOTAL AREA	133.57 SQ.M.	1,438 SQ.FT



NAYA 3

2 BEDROOM
APARTMENT 06
LEVEL 03 - 16 TYPICAL

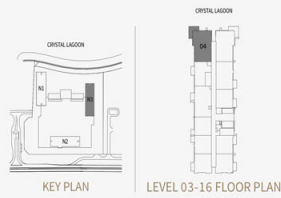
SUITE AREA	107.93 SQ.M.	1,162 SQ.FT
BALCONY AREA	6.65 SQ.M.	71 SQ.FT
TOTAL AREA	114.58 SQ.M.	1,233 SQ.FT



NAYA 3

2 BEDROOM
APARTMENT 04
LEVEL 03 - 16 TYPICAL

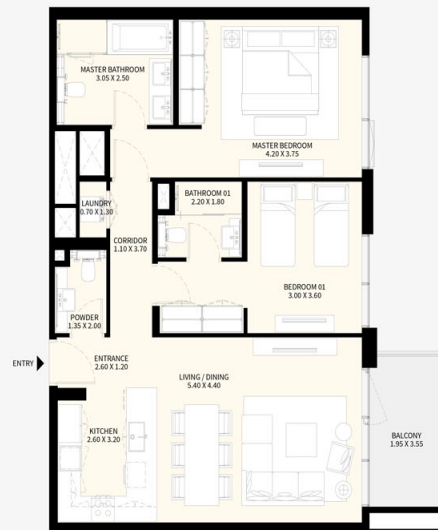
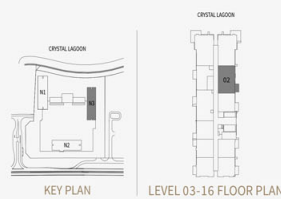
SUITE AREA	116.41 SQ.M.	1,253 SQ.FT
BALCONY AREA	17.16 SQ.M.	185 SQ.FT
TOTAL AREA	133.57 SQ.M.	1,438 SQ.FT



NAYA 3

2 BEDROOM
APARTMENT 02
LEVEL 03 - 16 TYPICAL

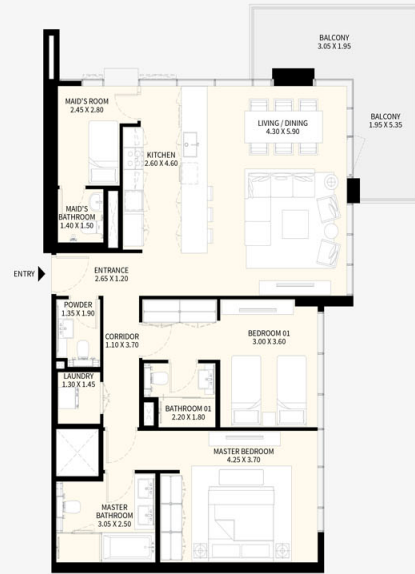
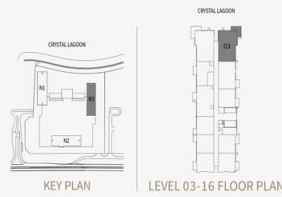
SUITE AREA	97.99 SQ.M.	1,055 SQ.FT
BALCONY AREA	7.74 SQ.M.	83 SQ.FT
TOTAL AREA	105.73 SQ.M.	1,138 SQ.FT



NAYA 3

2 BEDROOM
APARTMENT 03
LEVEL 03 - 16 TYPICAL

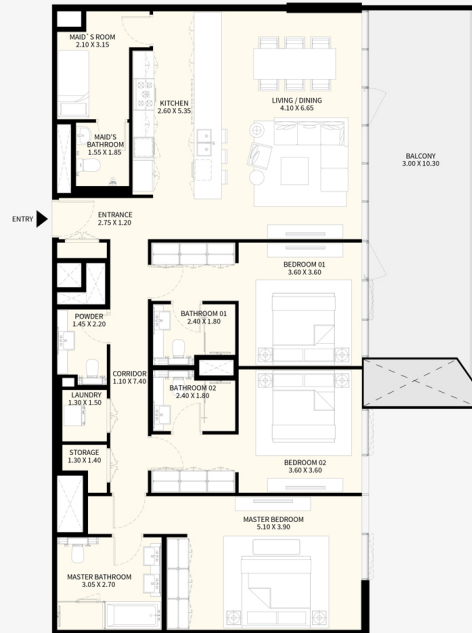
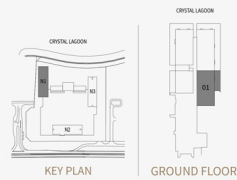
SUITE AREA	116.06 SQ.M.	1,249 SQ.FT
BALCONY AREA	17.15 SQ.M.	185 SQ.FT
TOTAL AREA	133.21 SQ.M.	1,434 SQ.FT



NAYA 1

3 BEDROOM
APARTMENT 01
GROUND FLOOR

SUITE AREA	160.94 SQ.M.	1,732 SQ.FT
BALCONY AREA	31.85 SQ.M.	343 SQ.FT
TOTAL AREA	192.79 SQ.M.	2,075 SQ.FT

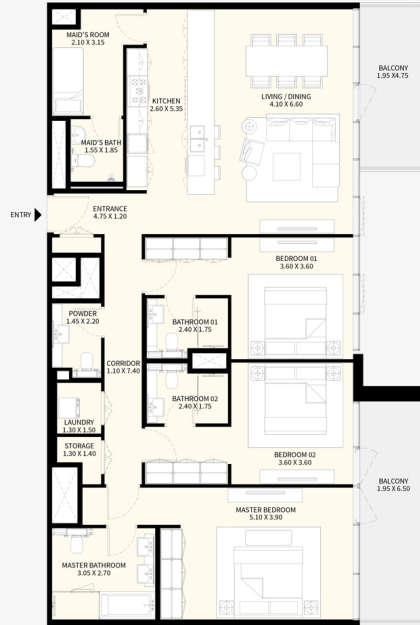
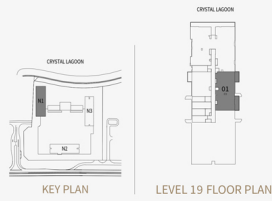


DISCLAIMER: All measurements, dimensions, coordinates and drawings, given as the Floor Plans in the literature are approximate and provided only for the purpose of marketing, illustration, information and general guidance as such drawings are not to scale. All the rooms, sizes, locations, orientations, dimensions, fixtures, fittings, finishes and specifications (including materials for, placement, size of rooms, windows, doors, balcony, furniture's inbuilt wardrobe etc.) provided in the floor plans may vary as the same have been taken from concept designs prior the actual development/construction and therefore their accuracy in relation to actual construction cannot be confirmed. Hence, we make no guarantee, warranty or representation as to the accuracy and completeness of the floor plan information as changes may be made during the development process, without notice. Always refer to latest IFC design available in the sales office for the most accurate representation of all construction details.

NAYA 1

3 BEDROOM
APARTMENT 01
LEVEL 19

SUITE AREA	160.36 SQ.M.	1,726 SQ.FT
BALCONY AREA	23.60 SQ.M.	254 SQ.FT
TOTAL AREA	183.96 SQ.M.	1,980 SQ.FT



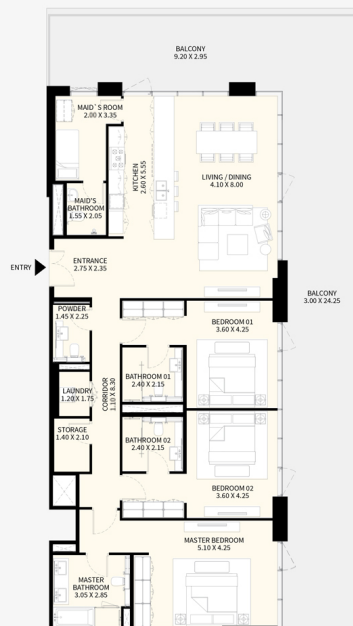
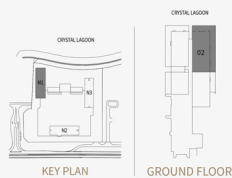
DISCLAIMER: All measurements, dimensions, coordinates and drawings, given as the Floor Plans in the literature are approximate and provided only for the purpose of marketing, illustration, information and general guidance as such drawings are not to scale. All the rooms, sizes, locations, orientations, dimensions, fixtures, fittings, finishes and specifications (including materials for, placement, size of rooms, windows, doors, balcony, furniture's inbuilt wardrobe etc.) provided in the floor plans may vary as the same have been taken from concept designs prior the actual development/construction and therefore their accuracy in relation to actual construction cannot be confirmed. Hence, we make no guarantee, warranty or representation as to the accuracy and completeness of the floor plan information as changes may be made during the development process, without notice. Always refer to latest IFC design available in the sales office for the most accurate representation of all construction details.

STR/PUP/DP/13072023

NAYA 1

3 BEDROOM
APARTMENT 02
GROUND FLOOR

SUITE AREA	187.96 SQ.M.	2,023 SQ.FT
BALCONY AREA	101.78 SQ.M.	1,096 SQ.FT
TOTAL AREA	289.74 SQ.M.	3,119 SQ.FT



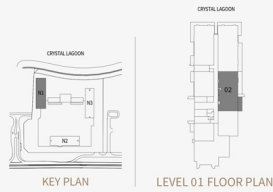
DISCLAIMER: All measurements, dimensions, coordinates and drawings, given as the Floor Plans in the literature are approximate and provided only for the purpose of marketing, illustration, information and general guidance as such drawings are not to scale. All the rooms, sizes, locations, orientations, dimensions, fixtures, fittings, finishes and specifications (including materials for, placement, size of rooms, windows, doors, balcony, furniture's inbuilt wardrobe etc.) provided in the floor plans may vary as the same have been taken from concept designs prior the actual development/construction and therefore their accuracy in relation to actual construction cannot be confirmed. Hence, we make no guarantee, warranty or representation as to the accuracy and completeness of the floor plan information as changes may be made during the development process, without notice. Always refer to latest IFC design available in the sales office for the most accurate representation of all construction details.

STR/PUP/DP/13072023

NAYA 1

3 BEDROOM
APARTMENT 02
LEVEL 01

SUITE AREA	160.91 SQ.M.	1,732 SQ.FT
BALCONY AREA	34.73 SQ.M.	374 SQ.FT
TOTAL AREA	195.64 SQ.M.	2,106 SQ.FT



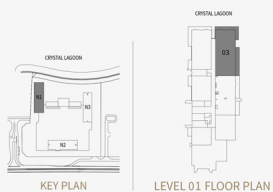
DISCLAIMER: All measurements, dimensions, coordinates and drawings, given as the Floor Plans in the literature are approximate and provided only for the purpose of marketing, illustration, information and general guidance as such drawings are not to scale. All the rooms, sizes, locations, orientations, dimensions, fixtures, fittings, finishes and specifications (including materials for, placement, size of rooms, windows, doors, balcony, furniture's inbuilt wardrobe etc.) provided in the floor plans may vary as the same have been taken from concept designs prior to the actual development/construction and therefore their accuracy in relation to actual construction cannot be confirmed. Hence, we make no guarantee, warranty or representation as to the accuracy and completeness of the floor plan information as changes may be made during the development process, without notice. Always refer to latest IFC design available in the sales office for the most accurate representation of all construction details.

STR/PUP/DP/13072023

NAYA 1

3 BEDROOM
APARTMENT 03
LEVEL 01

SUITE AREA	187.97 SQ.M.	2,023 SQ.FT
BALCONY AREA	58.18 SQ.M.	627 SQ.FT
TOTAL AREA	246.15 SQ.M.	2,650 SQ.FT



DISCLAIMER: All measurements, dimensions, coordinates and drawings, given as the Floor Plans in the literature are approximate and provided only for the purpose of marketing, illustration, information and general guidance as such drawings are not to scale. All the rooms, sizes, locations, orientations, dimensions, fixtures, fittings, finishes and specifications (including materials for, placement, size of rooms, windows, doors, balcony, furniture's inbuilt wardrobe etc.) provided in the floor plans may vary as the same have been taken from concept designs prior to the actual development/construction and therefore their accuracy in relation to actual construction cannot be confirmed. Hence, we make no guarantee, warranty or representation as to the accuracy and completeness of the floor plan information as changes may be made during the development process, without notice. Always refer to latest IFC design available in the sales office for the most accurate representation of all construction details.

STR/PUP/DP/13072023

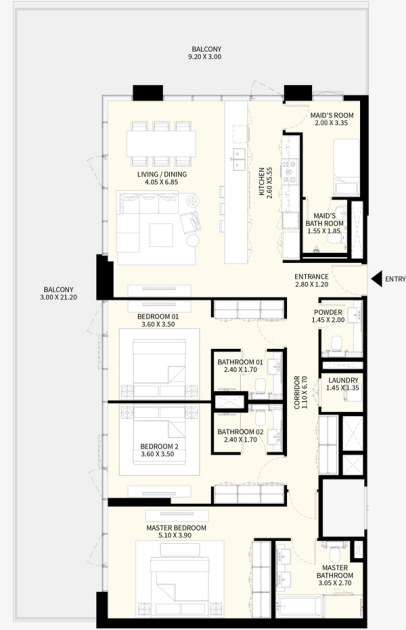
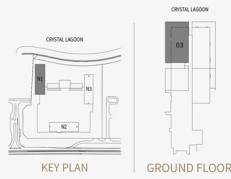
NAYA 1

3 BEDROOM
APARTMENT 03
GROUND FLOOR

SUITE AREA 160.33 SQ.M. 1,726 SQ.FT

BALCONY AREA 92.06 SQ.M. 991 SQ.FT

TOTAL AREA 252.39 SQ.M. 2,717 SQ.FT



DISCLAIMER: All measurements, dimensions, coordinates and drawings, given as the Floor Plans in the literature are approximate and provided only for the purpose of marketing, illustration, information and general guidance as such drawings are not to scale. All the rooms, sizes, locations, orientations, dimensions, fixtures, fittings, finishes and specifications (including materials for, placement, size of rooms, windows, doors, balcony, furniture's inbuilt wardrobe etc.) provided in the floor plans may vary as the same have been taken from concept designs prior to the actual development/construction and therefore their accuracy in relation to actual construction cannot be confirmed. Hence, we make no guarantee, warranty or representation as to the accuracy and completeness of the floor plan information as changes may be made during the development process, without notice. Always refer to latest IFC design available in the sales office for the most accurate representation of all construction details.

STR/PUP/DP/13072023

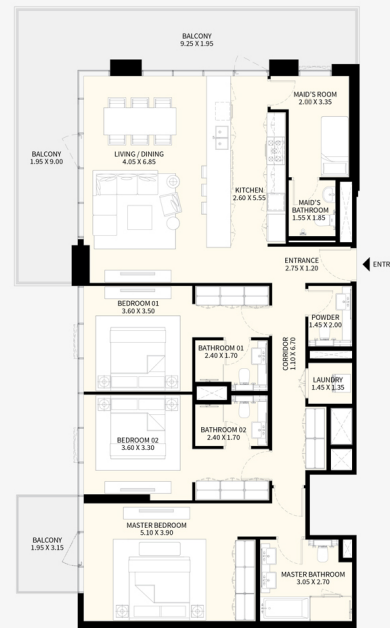
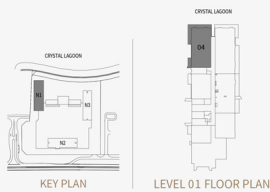
NAYA 1

3 BEDROOM
APARTMENT 04
LEVEL 01

SUITE AREA 160.35 SQ.M. 1,726 SQ.FT

BALCONY AREA 43.35 SQ.M. 467 SQ.FT

TOTAL AREA 203.70 SQ.M. 2,193 SQ.FT



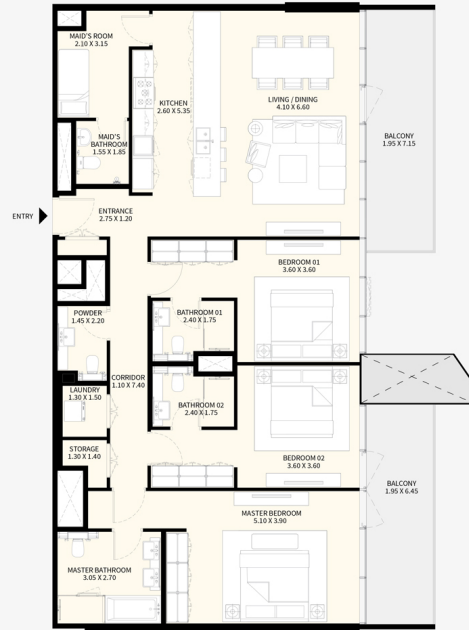
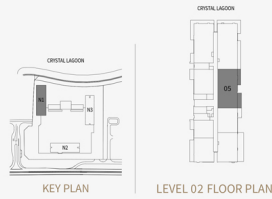
DISCLAIMER: All measurements, dimensions, coordinates and drawings, given as the Floor Plans in the literature are approximate and provided only for the purpose of marketing, illustration, information and general guidance as such drawings are not to scale. All the rooms, sizes, locations, orientations, dimensions, fixtures, fittings, finishes and specifications (including materials for, placement, size of rooms, windows, doors, balcony, furniture's inbuilt wardrobe etc.) provided in the floor plans may vary as the same have been taken from concept designs prior to the actual development/construction and therefore their accuracy in relation to actual construction cannot be confirmed. Hence, we make no guarantee, warranty or representation as to the accuracy and completeness of the floor plan information as changes may be made during the development process, without notice. Always refer to latest IFC design available in the sales office for the most accurate representation of all construction details.

STR/PUP/DP/13072023

NAYA 1

3 BEDROOM
APARTMENT 05
LEVEL 02

SUITE AREA	160.62 SQ.M.	1,729 SQ.FT
BALCONY AREA	28.40 SQ.M.	306 SQ.FT
TOTAL AREA	189.02 SQ.M.	2,035 SQ.FT



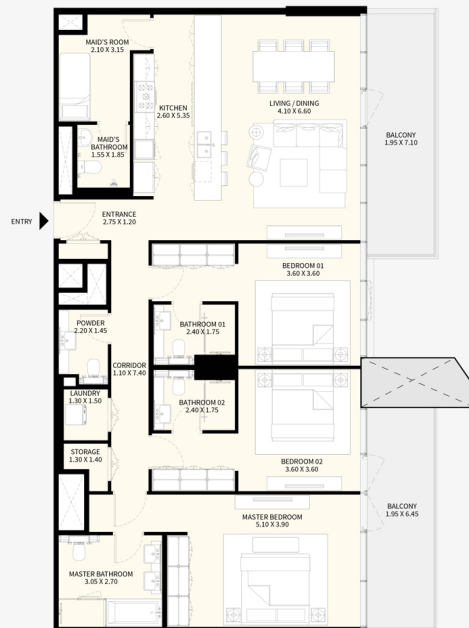
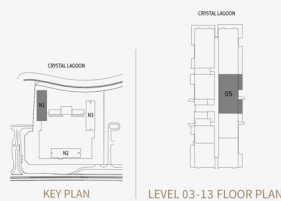
DISCLAIMER: All measurements, dimensions, coordinates and drawings, given as the Floor Plans in the literature are approximate and provided only for the purpose of marketing, illustration, information and general guidance as such drawings are not to scale. All the rooms, sizes, locations, orientations, dimensions, fixtures, fittings, finishes and specifications (including materials for, placement, size of rooms, windows, doors, balcony, furniture's inbuilt wardrobe etc.) provided in the floor plans may vary as the same have been taken from concept designs prior the actual development/construction and therefore their accuracy in relation to actual construction cannot be confirmed. Hence, we make no guarantee, warranty or representation as to the accuracy and completeness of the floor plan information as changes may be made during the development process, without notice. Always refer to latest IFC design available in the sales office for the most accurate representation of all construction details.

STR/PUP/DP/13072023

NAYA 1

3 BEDROOM
APARTMENT 05
LEVEL 03-13 TYPICAL

SUITE AREA	160.78 SQ.M.	1,731 SQ.FT
BALCONY AREA	28.21 SQ.M.	303 SQ.FT
TOTAL AREA	188.99 SQ.M.	2,034 SQ.FT



DISCLAIMER: All measurements, dimensions, coordinates and drawings, given as the Floor Plans in the literature are approximate and provided only for the purpose of marketing, illustration, information and general guidance as such drawings are not to scale. All the rooms, sizes, locations, orientations, dimensions, fixtures, fittings, finishes and specifications (including materials for, placement, size of rooms, windows, doors, balcony, furniture's inbuilt wardrobe etc.) provided in the floor plans may vary as the same have been taken from concept designs prior the actual development/construction and therefore their accuracy in relation to actual construction cannot be confirmed. Hence, we make no guarantee, warranty or representation as to the accuracy and completeness of the floor plan information as changes may be made during the development process, without notice. Always refer to latest IFC design available in the sales office for the most accurate representation of all construction details.

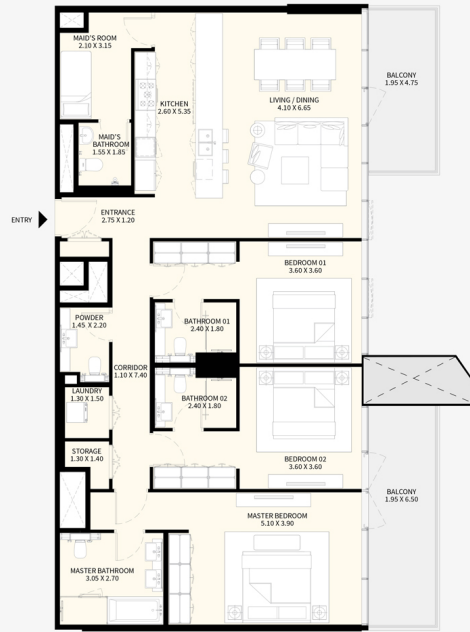
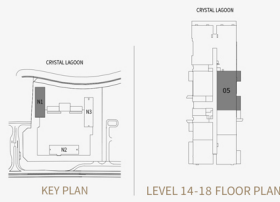
STR/PUP/DP/13072023

NAYA 1

3 BEDROOM
APARTMENT 05
LEVEL 14-18 TYPICAL

SUITE AREA	160.63 SQ.M.	1,729 SQ.FT
BALCONY AREA	23.56 SQ.M.	254 SQ.FT
TOTAL AREA	184.19 SQ.M.	1,983 SQ.FT

MEYDAN



DISCLAIMER: All measurements, dimensions, coordinates and drawings, given as the Floor Plans in the literature are approximate and provided only for the purpose of marketing, illustration, information and general guidance as such drawings are not to scale. All the rooms, sizes, locations, orientations, dimensions, fixtures, fittings, finishes and specifications (including materials for placement, size of rooms, windows, doors, balcony, furniture's inbuilt wardrobe etc.) provided in the floor plans may vary as the same have been taken from concept designs prior the actual development/construction and therefore their accuracy in relation to actual construction cannot be confirmed. Hence, we make no guarantee, warranty or representation as to the accuracy and completeness of the floor plan information as changes may be made during the development process, without notice. Always refer to latest IFC design available in the sales office for the most accurate representation of all construction details.

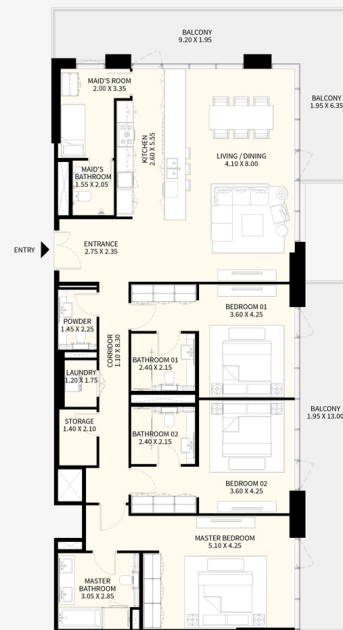
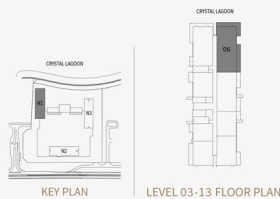
STR/PUP/DP/13072023

NAYA 1

3 BEDROOM
APARTMENT 06
LEVEL 03-13 TYPICAL

SUITE AREA	187.67 SQ.M.	2,020 SQ.FT
BALCONY AREA	58.56 SQ.M.	630 SQ.FT
TOTAL AREA	246.23 SQ.M.	2,650 SQ.FT

MEYDAN



DISCLAIMER: All measurements, dimensions, coordinates and drawings, given as the Floor Plans in the literature are approximate and provided only for the purpose of marketing, illustration, information and general guidance as such drawings are not to scale. All the rooms, sizes, locations, orientations, dimensions, fixtures, fittings, finishes and specifications (including materials for placement, size of rooms, windows, doors, balcony, furniture's inbuilt wardrobe etc.) provided in the floor plans may vary as the same have been taken from concept designs prior the actual development/construction and therefore their accuracy in relation to actual construction cannot be confirmed. Hence, we make no guarantee, warranty or representation as to the accuracy and completeness of the floor plan information as changes may be made during the development process, without notice. Always refer to latest IFC design available in the sales office for the most accurate representation of all construction details.

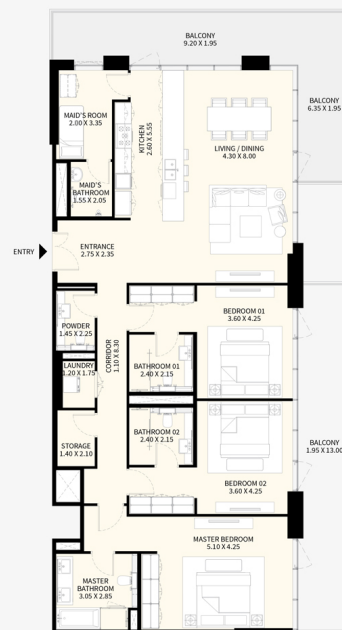
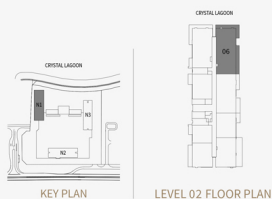
STR/PUP/DP/13072023

NAYA 1

3 BEDROOM
APARTMENT 06
LEVEL 02

SUITE AREA	187.76 SQ.M.	2,021 SQ.FT
BALCONY AREA	58.56 SQ.M.	630 SQ.FT
TOTAL AREA	246.32 SQ.M.	2,651 SQ.FT

MEYDAN



DISCLAIMER: All measurements, dimensions, coordinates and drawings, given as the Floor Plans in the literature are approximate and provided only for the purpose of marketing, illustration, information and general guidance as such drawings are not to scale. All the rooms, sizes, locations, orientations, dimensions, fixtures, fittings, finishes and specifications (including materials for placement, size of rooms, windows, doors, balcony, furniture's inbuilt wardrobe etc.) provided in the floor plans may vary as the same have been taken from concept designs prior the actual development/construction and therefore their accuracy in relation to actual construction cannot be confirmed. Hence, we make no guarantee, warranty or representation as to the accuracy and completeness of the floor plan information as changes may be made during the development process, without notice. Always refer to latest IFC design available in the sales office for the most accurate representation of all construction details.

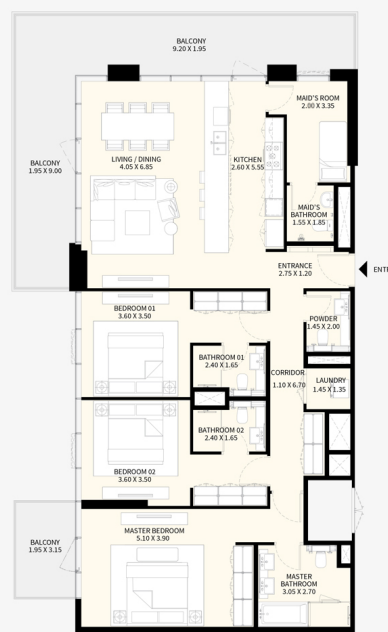
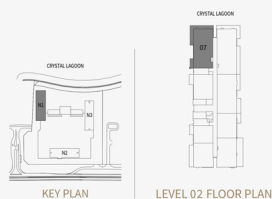
STR/PUP/DP/13072023

NAYA 1

3 BEDROOM
APARTMENT 07
LEVEL 02

SUITE AREA	159.99 SQ.M.	1,722 SQ.FT
BALCONY AREA	43.73 SQ.M.	471 SQ.FT
TOTAL AREA	203.72 SQ.M.	2,193 SQ.FT

MEYDAN



DISCLAIMER: All measurements, dimensions, coordinates and drawings, given as the Floor Plans in the literature are approximate and provided only for the purpose of marketing, illustration, information and general guidance as such drawings are not to scale. All the rooms, sizes, locations, orientations, dimensions, fixtures, fittings, finishes and specifications (including materials for placement, size of rooms, windows, doors, balcony, furniture's inbuilt wardrobe etc.) provided in the floor plans may vary as the same have been taken from concept designs prior the actual development/construction and therefore their accuracy in relation to actual construction cannot be confirmed. Hence, we make no guarantee, warranty or representation as to the accuracy and completeness of the floor plan information as changes may be made during the development process, without notice. Always refer to latest IFC design available in the sales office for the most accurate representation of all construction details.

STR/PUP/DP/13072023

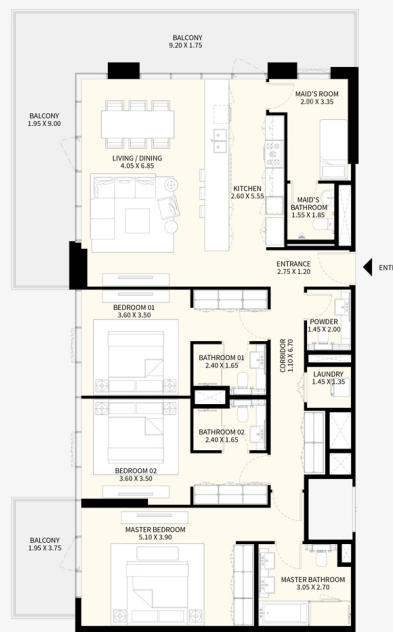
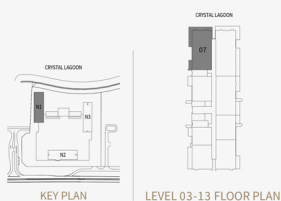
NAYA 1

3 BEDROOM
APARTMENT 07
LEVEL 03-13 TYPICAL

SUITE AREA 159.99 SQ.M. 1,722 SQ.FT

BALCONY AREA 44.97 SQ.M. 484 SQ.FT

TOTAL AREA 204.96 SQ.M. 2,206 SQ.FT



DISCLAIMER: All measurements, dimensions, coordinates and drawings, given as the Floor Plans in the literature are approximate and provided only for the purpose of marketing, illustration, information and general guidance as such drawings are not to scale. All the rooms, sizes, locations, orientations, dimensions, fixtures, fittings, finishes and specifications (including materials for, placement, size of rooms, windows, doors, balcony, furniture's inbuilt wardrobe etc.) provided in the floor plans may vary as the same have been taken from concept designs prior the actual development/construction and therefore their accuracy in relation to actual construction cannot be confirmed. Hence, we make no guarantee, warranty or representation as to the accuracy and completeness of the floor plan information as changes may be made during the development process, without notice. Always refer to latest IFC design available in the sales office for the most accurate representation of all construction details.

STR/PUP/DP/13072023

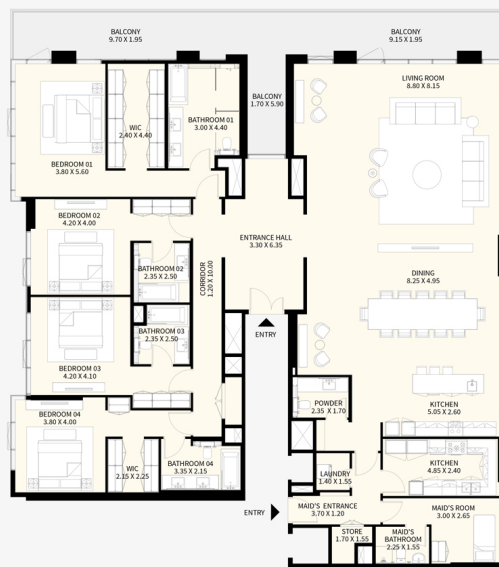
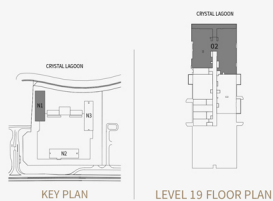
NAYA 1

4 BEDROOM
APARTMENT 02
LEVEL 19

SUITE AREA 368.23 SQ.M. 3,964 SQ.FT

BALCONY AREA 50.82 SQ.M. 547 SQ.FT

TOTAL AREA 419.05 SQ.M. 4,511 SQ.FT



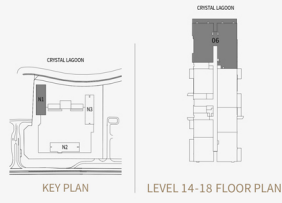
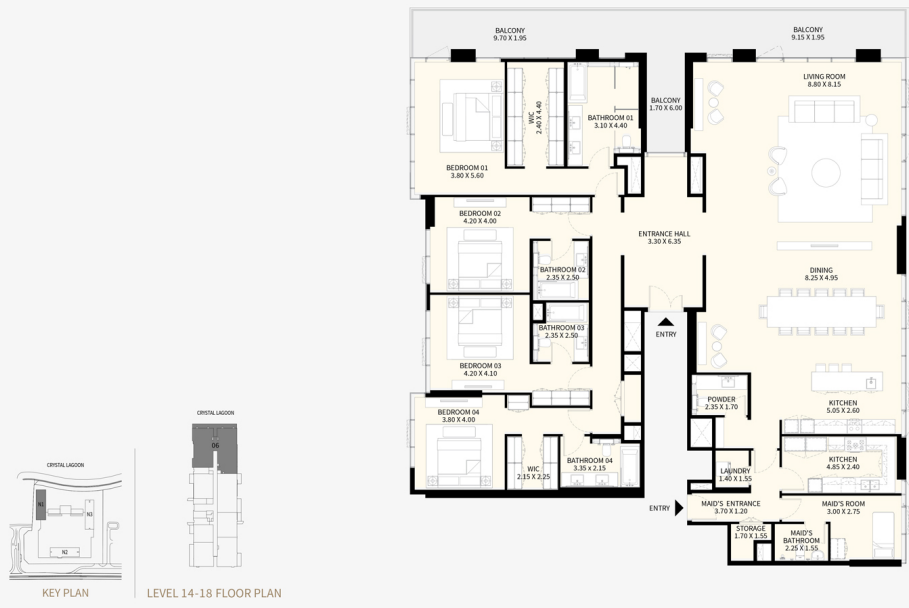
DISCLAIMER: All measurements, dimensions, coordinates and drawings, given as the Floor Plans in the literature are approximate and provided only for the purpose of marketing, illustration, information and general guidance as such drawings are not to scale. All the rooms, sizes, locations, orientations, dimensions, fixtures, fittings, finishes and specifications (including materials for, placement, size of rooms, windows, doors, balcony, furniture's inbuilt wardrobe etc.) provided in the floor plans may vary as the same have been taken from concept designs prior the actual development/construction and therefore their accuracy in relation to actual construction cannot be confirmed. Hence, we make no guarantee, warranty or representation as to the accuracy and completeness of the floor plan information as changes may be made during the development process, without notice. Always refer to latest IFC design available in the sales office for the most accurate representation of all construction details.

STR/PUP/DP/13072023

NAYA 1

4 BEDROOM
APARTMENT 06
LEVEL 14-18 TYPICAL

SUITE AREA	368.25 SQ.M.	3,964 SQ.FT
BALCONY AREA	50.77 SQ.M.	546 SQ.FT
TOTAL AREA	419.02 SQ.M.	4,510 SQ.FT



DISCLAIMER: All measurements, dimensions, coordinates and drawings, given as the Floor Plans in the literature are approximate and provided only for the purpose of marketing, illustration, information and general guidance as such drawings are not to scale. All the rooms, sizes, locations, orientations, dimensions, fixtures, fittings, finishes and specifications (including materials for placement size of rooms, windows, doors, balcony, furniture's inbuilt wardrobe etc.) provided in the floor plans may vary as the same have been taken from concept designs prior the actual development/construction and therefore their accuracy in relation to actual construction cannot be confirmed. Hence, we make no guarantee, warranty or representation as to the accuracy and completeness of the floor plan information as changes may be made during the development process, without notice. Always refer to latest IFC design available in the sales office for the most accurate representation of all construction details.

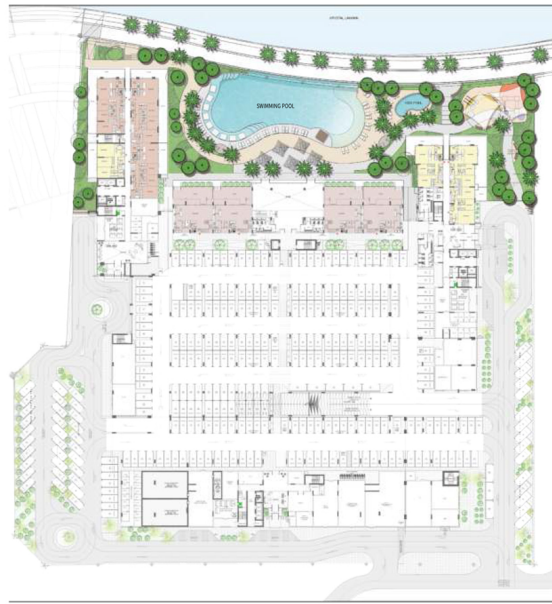
STR/PUP/DP/13072023

NAYA RESIDENTIAL TOWERS OVERALL GROUND LEVEL



NAYA RESIDENTIAL TOWERS

OVERALL GROUND LEVEL



NAYA RESIDENTIAL TOWERS

OVERALL GROUND LEVEL



NAYA RESIDENTIAL TOWERS

NAYA 01 TOWER

GROUND LEVEL



NAYA RESIDENTIAL TOWERS

NAYA 01 TOWER

GROUND LEVEL



NAYA RESIDENTIAL TOWERS

NAYA 03 TOWER

GROUND LEVEL



NAYA RESIDENTIAL TOWERS

OVERALL LEVEL 01



NAYA RESIDENTIAL TOWERS

OVERALL LEVEL 01



NAYA RESIDENTIAL TOWERS

NAYA 03 TOWER

LEVEL 01



NAYA RESIDENTIAL TOWERS

NAYA 01 TOWER

LEVEL 19



NAYA RESIDENTIAL TOWERS

OVERALL LEVEL 02



NAYA RESIDENTIAL TOWERS

OVERALL LEVEL 02



NAYA RESIDENTIAL TOWERS

NAYA 03 TOWER

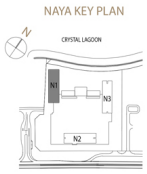
LEVEL 02



NAYA RESIDENTIAL TOWERS

NAYA 01 TOWER

TYPICAL LEVELS 14-18



NAYA RESIDENTIAL TOWERS

NAYA 03 TOWER

TYPICAL LEVELS 03 - 16



NAYA RESIDENTIAL TOWERS

NAYA 01 TOWER

TYPICAL LEVELS 03-13



CONTACT US



Call Us [+971 4 248 3400](tel:+97142483400)



WhatsApp [+971 55 162 3236](https://wa.me/971551623236)

TANAMI
PROPERTIES