

# Nesba 1 at Aljada - Apartment

## الطابق الأول 1st Floor Plan



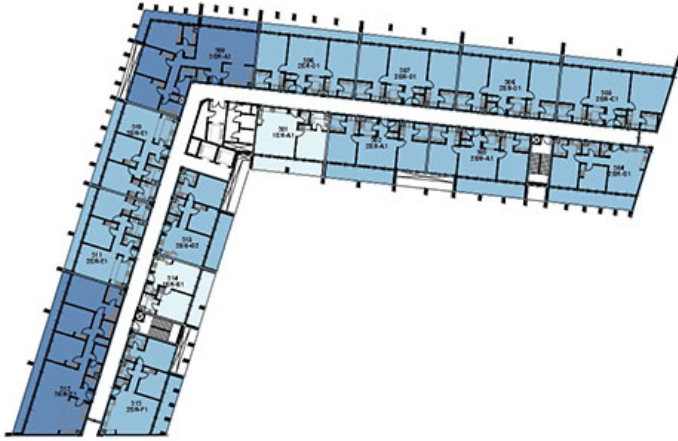
- 1 Bedroom
- 2 Bedroom
- 3 Bedroom



- 1 bedroom
- 2 bedroom
- 3 bedroom

# الطابق الثالث والخامس

## 3rd and 5th Floor Plan



1 bedroom   2 bedroom   3 bedroom

---

# الطابق السادس

## 6th Floor Plan



1 bedroom    2 bedroom    3 bedroom



# الطابق السابع

## 7th Floor Plan



1 bedroom   2 bedroom   3 bedroom

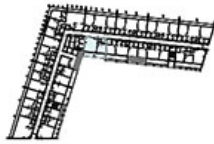
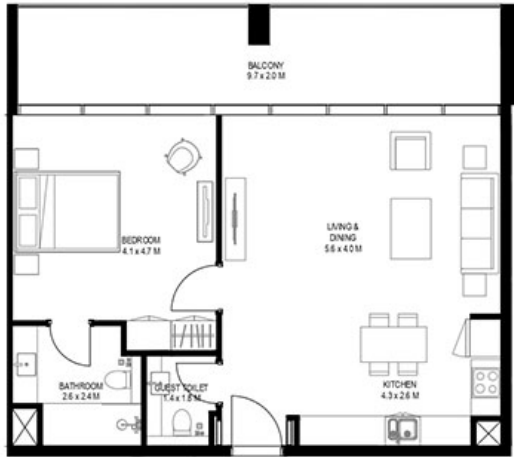


# 3 Bedroom Type A1

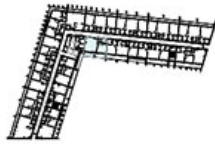


**Unit Area:** 159.09 Sqm (1713 Sqft) | **Balcony Area:** 23.62 Sqm (254 Sqft) | **Total Area:** 182.71 Sqm (1967 Sqft)

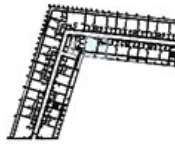
# 1 Bedroom Type A1



1ST FLOOR PLAN



3RD & 5TH FLOOR PLAN

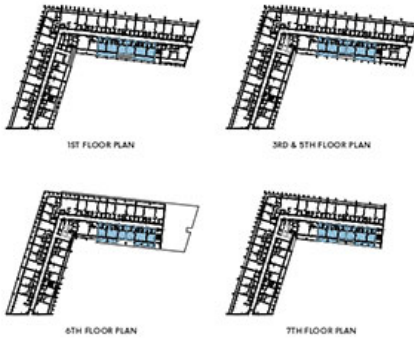
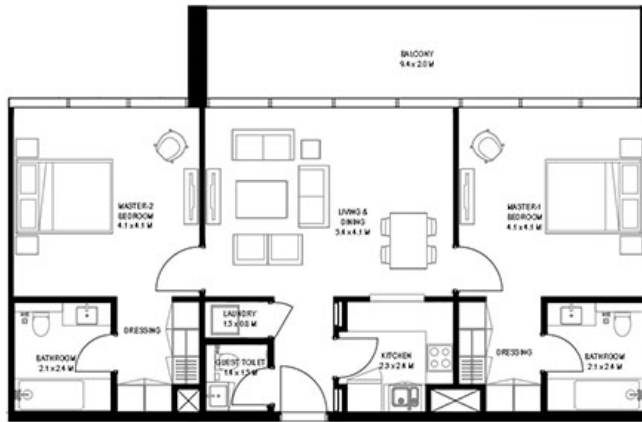


7TH FLOOR PLAN

**Unit Area:** 69.3 Sqm (746 Sqft) | **Balcony Area:** 20.5 Sqm (221 Sqft) | **Total Area:** 89.8 Sqm (967 Sqft)

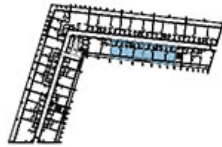
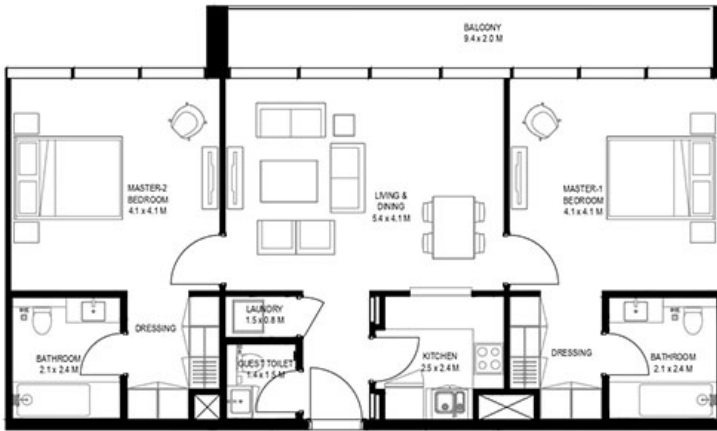
---

## 2 Bedroom Type A1



Unit Area: 96.82 Sqm (1043 Sqft) | Balcony Area: 20.6 Sqm (221 Sqft) | Total Area: 117.42 Sqm (1264 Sqft)

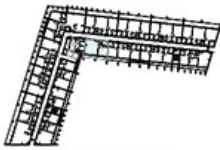
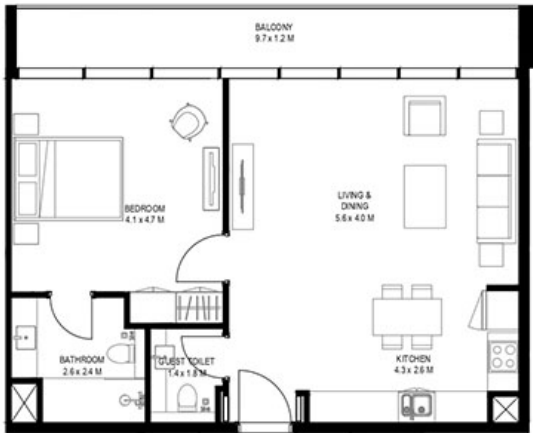
## 2 Bedroom Type A2



2ND & 4TH FLOOR PLAN

**Unit Area:** 96.88 Sqm (1043 Sqft) | **Balcony Area:** 12.36 Sqm (133 Sqft) | **Total Area:** 109.24 Sqm (1176 Sqft)

# 1 Bedroom Type A2



2ND & 4TH FLOOR PLAN

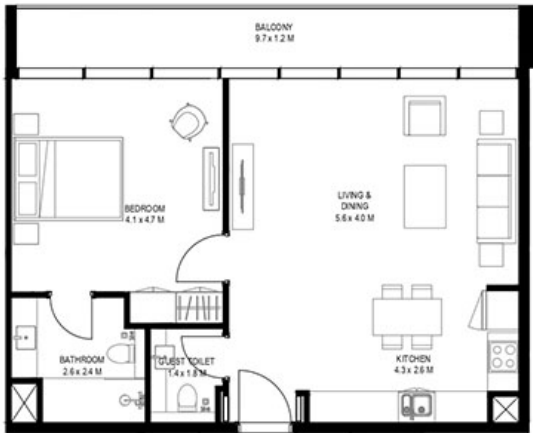


6TH FLOOR PLAN

**Unit Area:** 69.29 Sqm (746 Sqft) | **Balcony Area:** 12.3 Sqm (133 Sqft) | **Total Area:** 81.59 Sqm (879 Sqft)

---

# 1 Bedroom Type A2



2ND & 4TH FLOOR PLAN



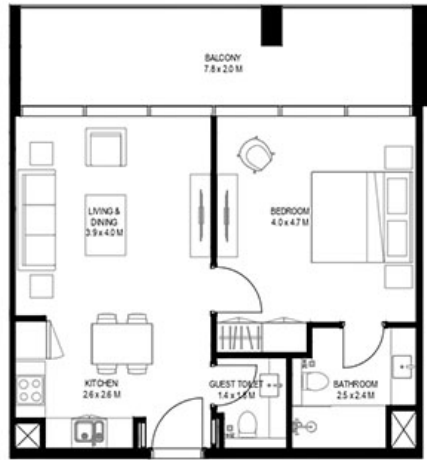
6TH FLOOR PLAN

**Unit Area:** 69.29 Sqm (746 Sqft) | **Balcony Area:** 12.3 Sqm (133 Sqft) | **Total Area:** 81.59 Sqm (879 Sqft)

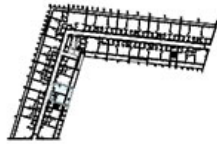
---



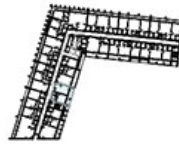
# 1 Bedroom Type B1



1ST FLOOR PLAN



3RD & 5TH FLOOR PLAN

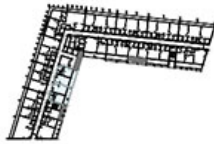
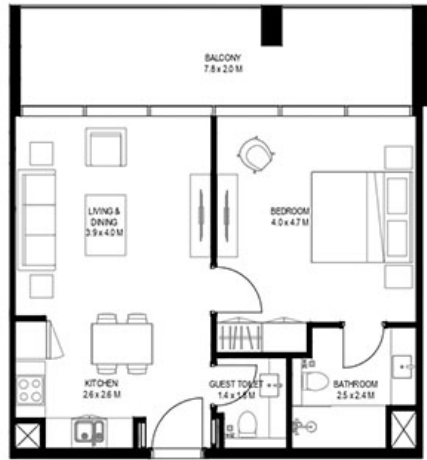


7TH FLOOR PLAN

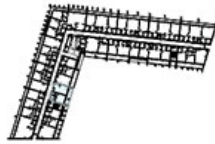
**Unit Area:** 56.39 Sqm (607 Sqft) | **Balcony Area:** 16.8 Sqm (181 Sqft) | **Total Area:** 73.19 Sqm (788 Sqft)

---

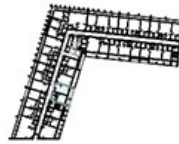
# 1 Bedroom Type B1



1ST FLOOR PLAN



3RD & 5TH FLOOR PLAN

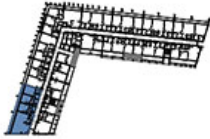
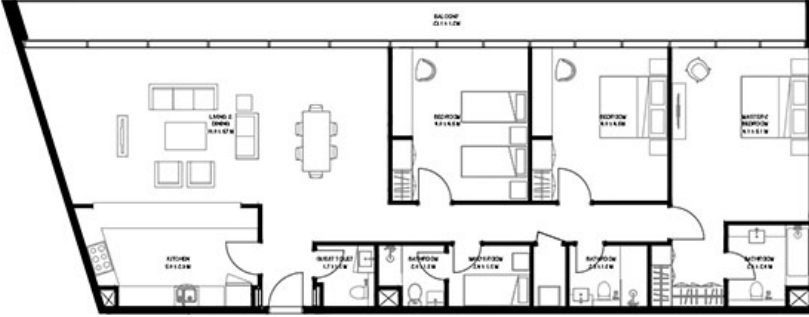


7TH FLOOR PLAN

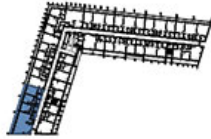
**Unit Area:** 56.39 Sqm (607 Sqft) | **Balcony Area:** 16.8 Sqm (181 Sqft) | **Total Area:** 73.19 Sqm (788 Sqft)

---

# 3 Bedroom Type B1



1ST FLOOR PLAN



3RD & 5TH FLOOR PLAN

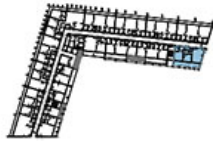
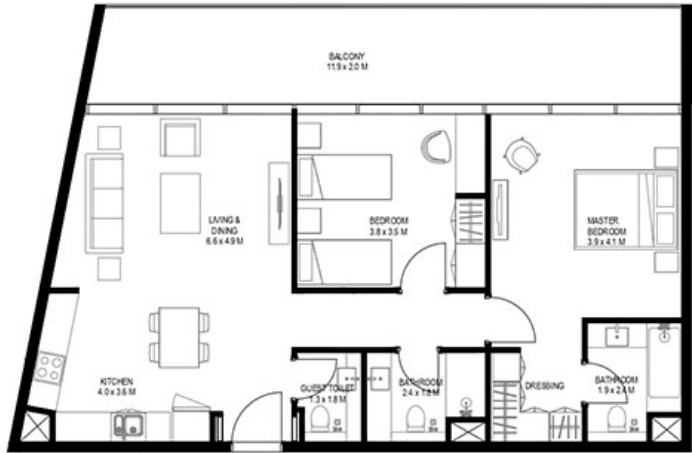


7TH FLOOR PLAN

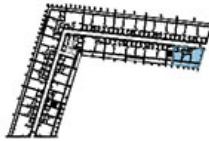
**Unit Area:** 176.1 Sqm (1896 Sqft) | **Balcony Area:** 28.34 Sqm (305 Sqft) | **Total Area:** 204.44 Sqm (2201 Sqft)

---

## 2 Bedroom Type B1



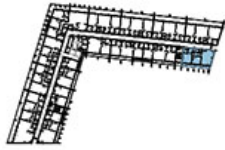
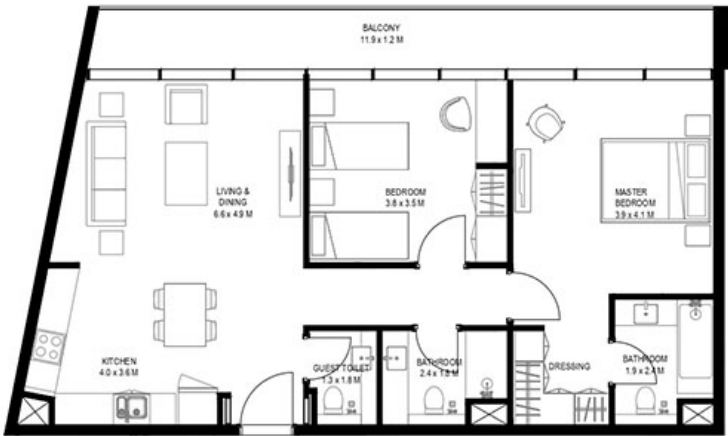
1ST FLOOR PLAN



3RD & 5TH FLOOR PLAN

**Unit Area:** 90.06 Sqm (970 Sqft) | **Balcony Area:** 24.82 Sqm (267 Sqft) | **Total Area:** 114.88 Sqm (1237 Sqft)

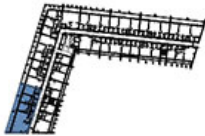
## 2 Bedroom Type B2



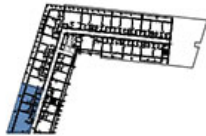
2ND & 4TH FLOOR PLAN

**Unit Area:** 90.21 Sqm (972 Sqft) | **Balcony Area:** 14.99 Sqm (161 Sqft) | **Total Area:** 105.2 Sqm (1133 Sqft)

## 3 Bedroom Type B2



2ND & 4TH FLOOR PLAN

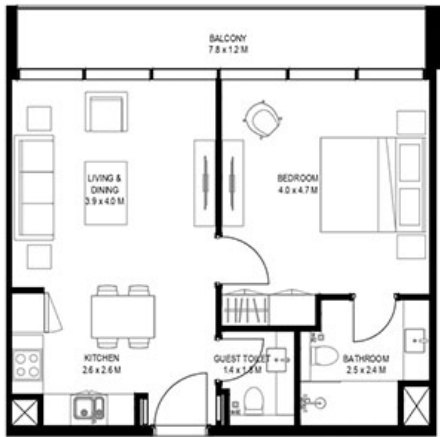


6TH FLOOR PLAN

**Unit Area:** 176.1 Sqm (1896 Sqft) | **Balcony Area:** 47.49 Sqm (511 Sqft) | **Total Area:** 223.59 Sqm (2407 Sqft)

---

# 1 Bedroom Type B2



2ND & 4TH FLOOR PLAN

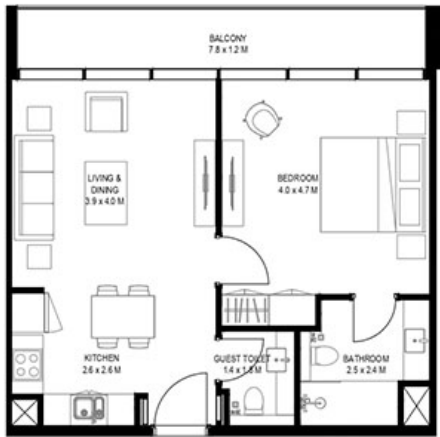


6TH FLOOR PLAN

**Unit Area:** 56.39 Sqm (607 Sqft) | **Balcony Area:** 10.08 Sqm (109 Sqft) | **Total Area:** 66.47 Sqm (716 Sqft)

---

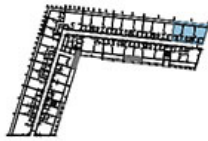
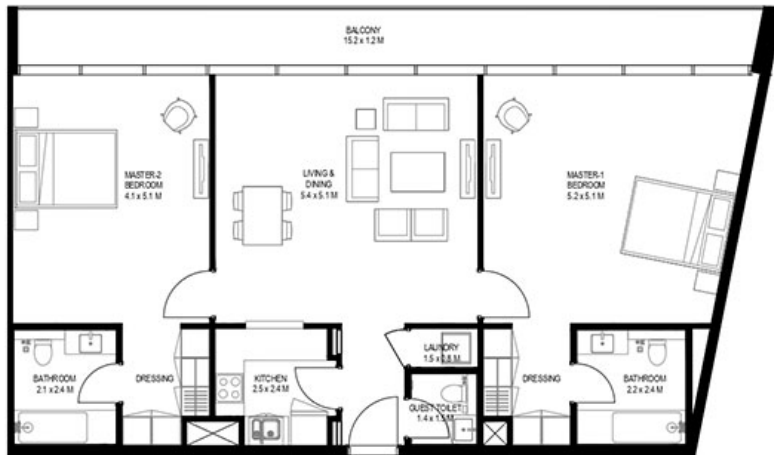
# 1 Bedroom Type B2



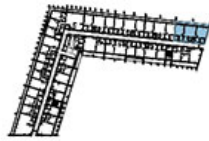
**Unit Area:** 56.39 Sqm (607 Sqft) | **Balcony Area:** 10.08 Sqm (109 Sqft) | **Total Area:** 66.47 Sqm (716 Sqft)

---

## 2 Bedroom Type C1



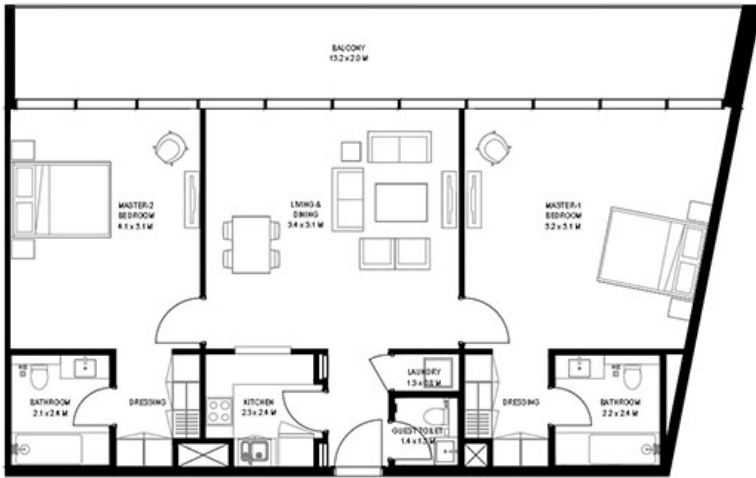
1ST FLOOR PLAN



3RD & 5TH FLOOR PLAN

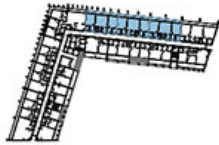
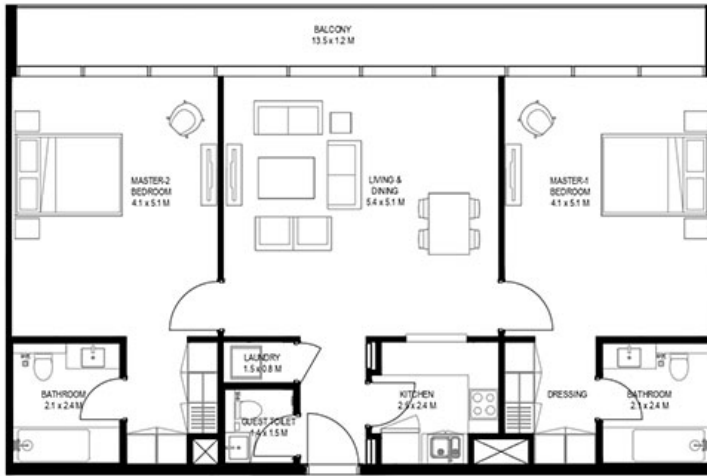
**Unit Area:** 118.05 Sqm (1271 Sqft) | **Balcony Area:** 18.97 Sqm (204 Sqft) | **Total Area:** 137.02 Sqm (1475 Sqft)

## 2 Bedroom Type C2

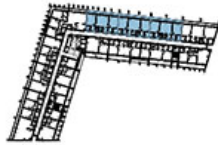


Unit Area: 118.03 Sqm (1271 Sqft) | Balcony Area: 31.75 Sqm (342 Sqft) | Total Area: 149.78 Sqm (1613 Sqft)

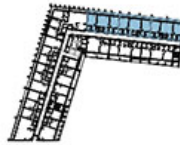
## 2 Bedroom Type D1



1ST FLOOR PLAN



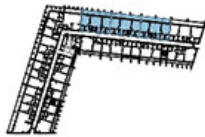
3RD & 5TH FLOOR PLAN



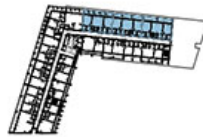
7TH FLOOR PLAN

Unit Area: 110.09 Sqm (1186 Sqft) | Balcony Area: 16.68 Sqm (179 Sqft) | Total Area: 126.77 Sqm (1365 Sqft)

## 2 Bedroom Type D2



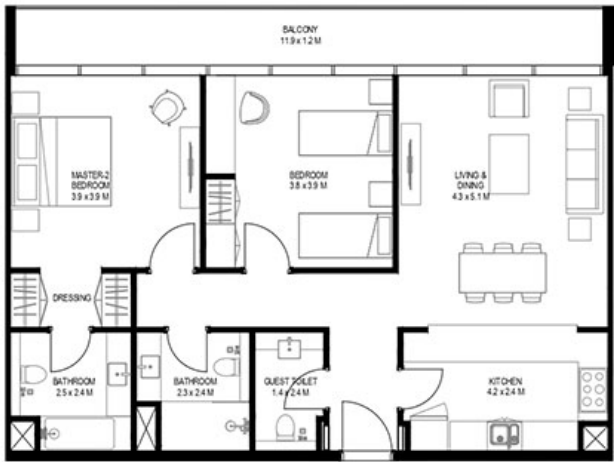
2ND & 4TH FLOOR PLAN



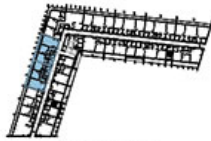
6TH FLOOR PLAN

**Unit Area:** 110.09 Sqm (1186 Sqft) | **Balcony Area:** 27.8 Sqm (299 Sqft) | **Total Area:** 137.89 Sqm (1485 Sqft)

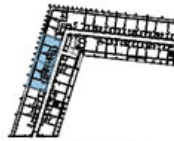
## 2 Bedroom Type E1



1ST FLOOR PLAN



3RD & 5TH FLOOR PLAN

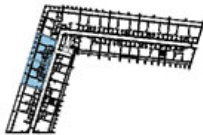
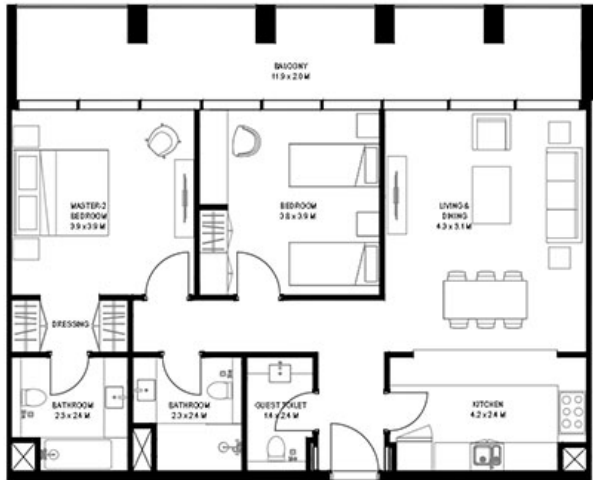


7TH FLOOR PLAN

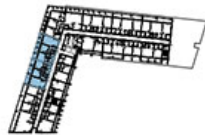
**Unit Area:** 97 Sqm (1045 Sqft) | **Balcony Area:** 15 Sqm (161 Sqft) | **Total Area:** 112 Sqm (1206 Sqft)

---

## 2 Bedroom Type E2



2ND & 4TH FLOOR PLAN

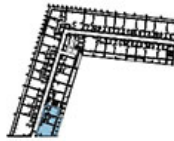
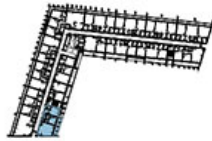
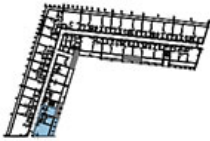
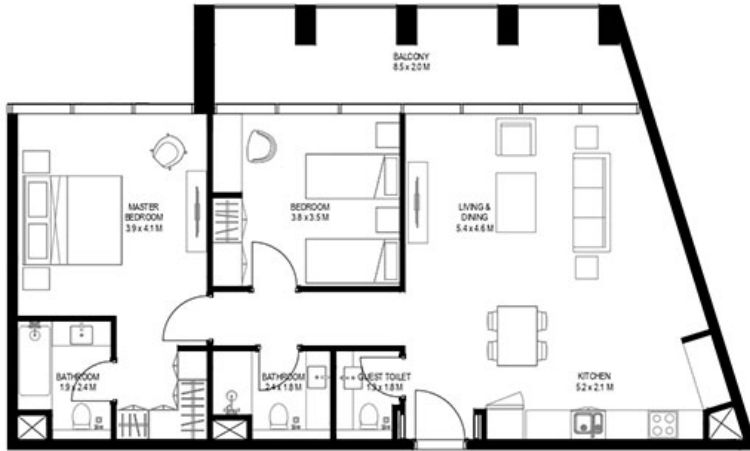


6TH FLOOR PLAN

**Unit Area:** 97 Sqm (1045 Sqft) | **Balcony Area:** 25 Sqm (269 Sqft) | **Total Area:** 122 Sqm (1314 Sqft)

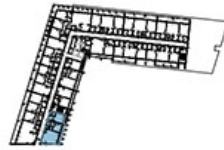
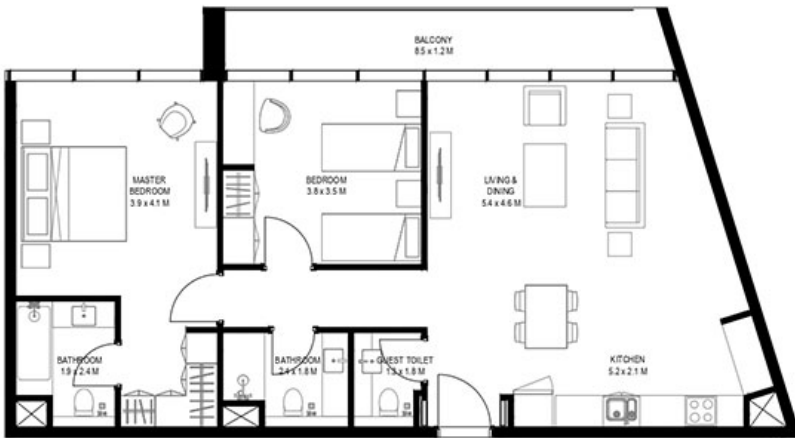
---

## 2 Bedroom Type F1



Unit Area: 97.01 Sqm (1045 Sqft) | Balcony Area: 17.83 Sqm (192 Sqft) | Total Area: 114.84 Sqm (1237 Sqft)

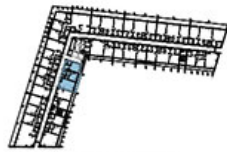
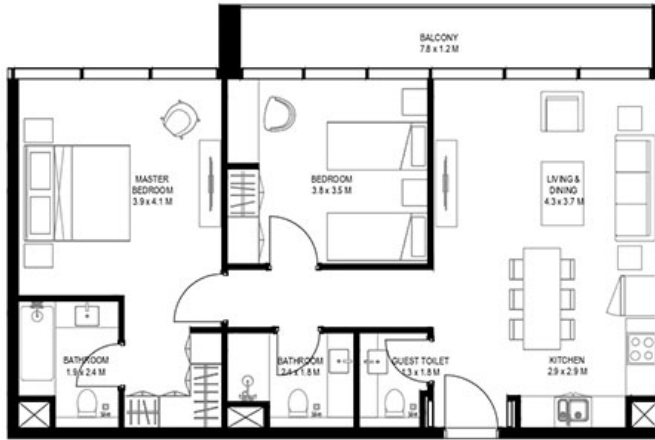
## 2 Bedroom Type F2



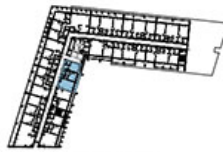
**Unit Area:** 97.02 Sqm (1045 Sqft) | **Balcony Area:** 10.84 Sqm (117 Sqft) | **Total Area:** 107.86 Sqm (1162 Sqft)

---

## 2 Bedroom Type G1



2ND & 4TH FLOOR PLAN

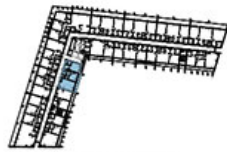


6TH FLOOR PLAN

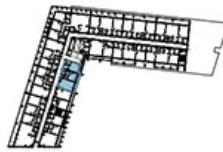
**Unit Area:** 85.4 Sqm (920 Sqft) | **Balcony Area:** 10.08 Sqm (108 Sqft) | **Total Area:** 95.48 Sqm (1028 Sqft)

---

## 2 Bedroom Type G1



2ND & 4TH FLOOR PLAN



6TH FLOOR PLAN

Unit Area: 85.4 Sqm (920 Sqft) | Balcony Area: 10.08 Sqm (108 Sqft) | Total Area: 95.48 Sqm (1028 Sqft)

# CONTACT US



Call Us [+971 4 248 3400](tel:+97142483400)



WhatsApp [+971 55 162 3236](https://wa.me/971551623236)

**TANAMI**  
PROPERTIES