



MINA

PALM JUMEIRAH
by AZIZI

INDEX

Dubai	11
Neighborhood.....	17
Mina by Azizi	25
Architecture.....	41
Bespoke Lifestyle.....	47
Interiors.....	57
Penthouse	67
Developer.....	79





CHAIRMAN'S MESSAGE

It is with great honor that Azizi Developments presents Mina by Azizi. As Chairman and Owner, It is a privilege to introduce to you not only a distinctive standard in Azizi's capabilities, it is also a true testament to a personal legacy.

Named after my own darling granddaughter, Mina, this unique building, located in the most splendid location in Dubai, is a marvel in both architecture and living. It is a fitting reflection of my love for her, and the importance of family when making decisions for life. This project sets new standards in planning and world-class consultation, design, natural environment and lifestyle. It provides an unquestionable bond between nature, habitat and family, and is befitting those who desire the very best for themselves, and for those they love the most.

There's no better way to create an enduring connection with one's family, cementing a concrete bond between parents and children. This is Azizi's most personal project to date, and there's no better way to witness this unique opportunity than with your own eyes.

Mina by Azizi is an endeavor that reflects a family legacy. Not just mine, but everyone's.

Mirwais Azizi, Chariman





THIS IS MINA...THIS IS ME...

*in the golden sands of Arabia,
a princess is born.
The crown jewel of her flagship,
the heart of a new empire.*

*How you were created, crafted, moulded to
perfection with your delicate detailing
glamorous accessories and features that
make you stand out from afar.*

*The sun rise praises you as it gracefully
casts over the skies with majestic shades
of pastel while the evening moon artfully
displays a mild shadow on the ocean surface as
the gentle breeze caresses
your face.*

CLOSE YOUR EYES. BREATHE.

THIS IS MINA, THIS IS ME.

COME AND LIVE REGALLY.



A city with
DUBAI
A CITY STRIVING FOR EXCELLENCE
no limits



A DREAM CITY

Ranked in the top ten happiest cities in the world, Dubai Happiness Index's ambitions are fixed on being number 1. The Mastercard Global Destination Cities Index 2015 forecasted Dubai to be the 4th most popular destination.







DUBAI

GRACED BY ITS ENVIRONMENT

- 01 Tourists' favourite destination
- 02 City of skyscrapers
- 03 Expo 2020, the most awaited event
- 04 Thriving tourism and trade scenario
- 05 Activities for entertainment, relaxation and pleasure
- 06 Grand golf courses



01



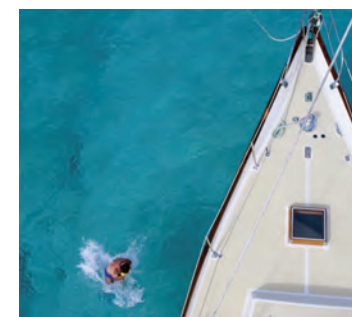
02



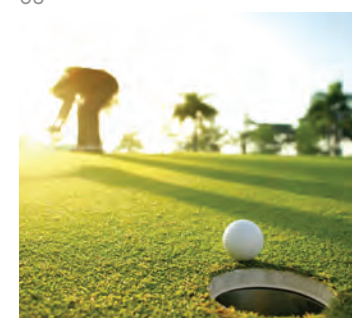
03



04



05



06

This ever growing modern-day marvel is a city that embodies a vision for excellence. Expo 2020 is approaching, and it promises to bring yet another exciting and illustrious chapter to the world's most closely-followed story.

With the 2030 Economic Vision, world-famous iconic statements, architectural magnificence and excellent infrastructure capabilities, the city will continue to achieve the impossible for its residents and tourists alike.

All these things make Dubai a dream for investors, with an increasing number of tourists visiting the city year on year, and foreign nationals making it their new home.





your own
THE 8TH WONDER OF THE
WORLD, YOUR HOME
neighborhood



THE PALM

Imaginations run wild when the words 'Dubai The Palm' are heard. It truly represents the city's ambitious outlook and luxurious lifestyle.



- 01 One & Only Hotel
- 02 Zabeel Saray Hotel
- 03 Kempinski Hotel
- 04 Atlantis Hotel
- 05 Sofitel Hotel
- 06 Waldorf Astoria Hotel
- 07 Anantara Hotel
- 08 Rixos Hotel
- 09 Dubai Marina

05

06

MINA

PALM JUMEIRAH
by AZIZI

07

08



A WELL CONNECTED NEIGHBORHOOD

- 07 Wondrous marine life
- 08 Fascinating Landscape
- 09 Mesmerizing shores at The Palm
- 10 Serene vistas of the skyline, sun and sea

07



08



09





10

With breath-taking panoramic views of the city and sea, this location is the envy of the world. Residents are surrounded by the world's most luxurious hotels and resorts. A locality boasting illustrious community and friends.

Needless to say, access to the city's main thoroughfare and its airports is seamless. Its proximity to Dubai Marina and Jumeirah Beach, and business centres like Dubai Media City and Internet City, make it an even more fascinating proposition.



SUN, SEA, PERFECTION

Envision a place where the sun shines brightly and a view of the infinite sea, a place you can call home.







Mina by Azizi

QUINTESSENTIAL ELEGANCE,
LIVED BEAUTIFULLY



IMPRESSION THAT LASTS

This beautifully crafted waterfront development hugs the shores and is caressed by the lapping sea, on the sands of one of the world's most sought-after addresses.







MINA BY AZIZI

A LIFESTYLE FOR A SELECT FEW

This iconic development covers a total area of 11,244 square metres, encompassing 178 fully furnished and serviced residences divided into 1-, 2- and 3-bedroom apartments and penthouses. The total retail area is of 16,500 square metres.







Elegant, contemporary architecture offers its revered residents an unforgettable lifestyle – quintessentially bespoke. Ergonomically designed with state-of-the-art fully furnished and serviced apartments.



Mina by Azizi boasts stunning views of the sea, deluxe amenities and interiors in a perfect backdrop of nature and style. A unique opportunity for those with a global lifestyle - and immaculate taste.



Have you ever been somewhere so beautiful, so perfect, that you've never wanted to leave? When The Palm is your playground, everything's within reach. Pristine, untouched beaches, clear blue sea – a resort experience unlike any other.



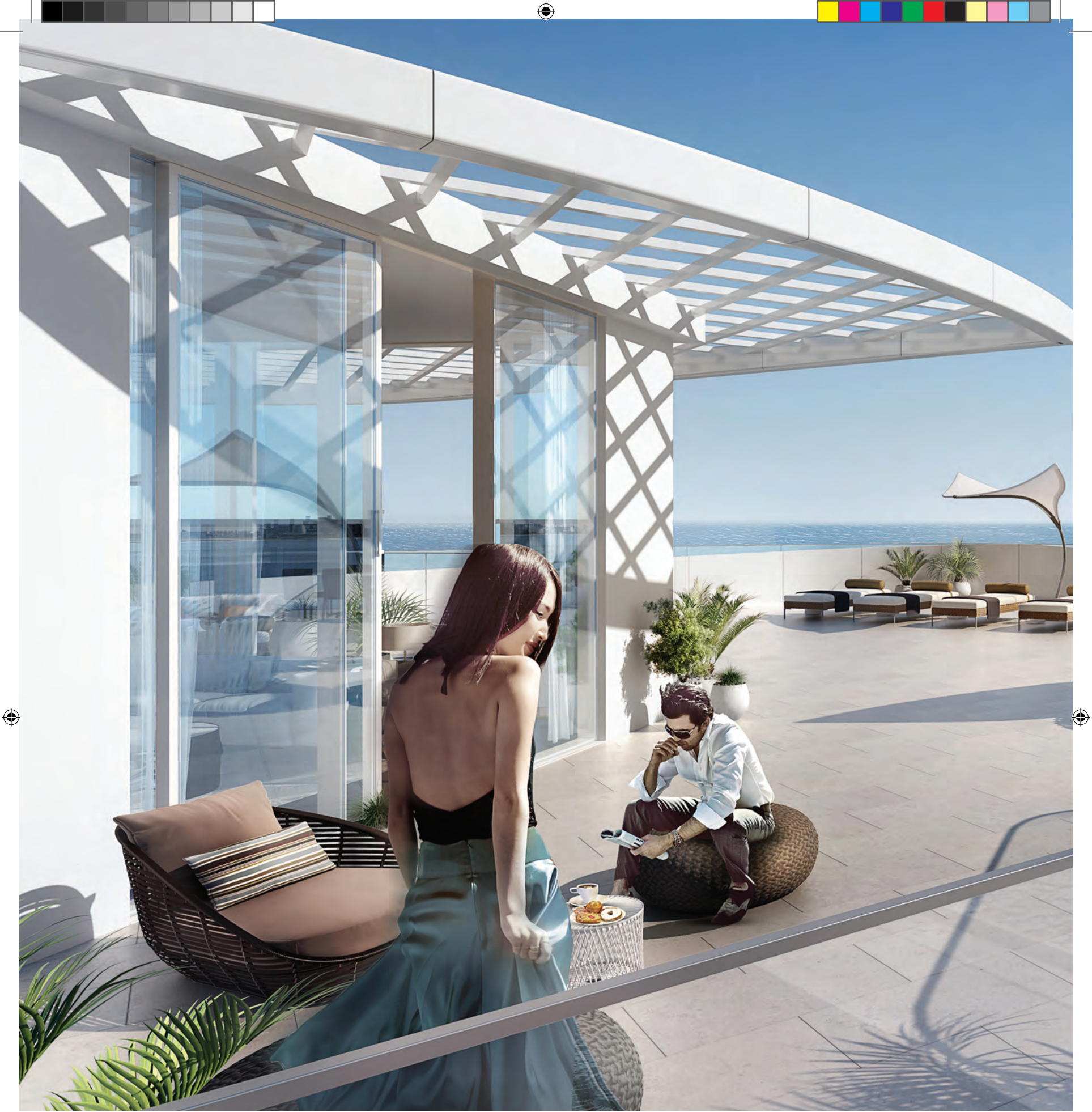
Close enough to some of the city's most exciting venues, but far enough to be called a sanctuary. Residents are immersed in an expression of magnificence. At one with nature, and at the same time benefiting from endless opportunities to discover the surrounding areas and for socialising.

UNFORGETTABLE VIEWS

A world-renowned attraction with stunning landscape and endless horizon.









From the wonderfully calm Arabian Sea to the waterways that caress The Palm's inter-coastal shores, residents are spoilt for choice for vistas. There aren't many places that can offer such enviable attractions. There are even less people who can call this their home.

THE PERFECTION OF DETAIL

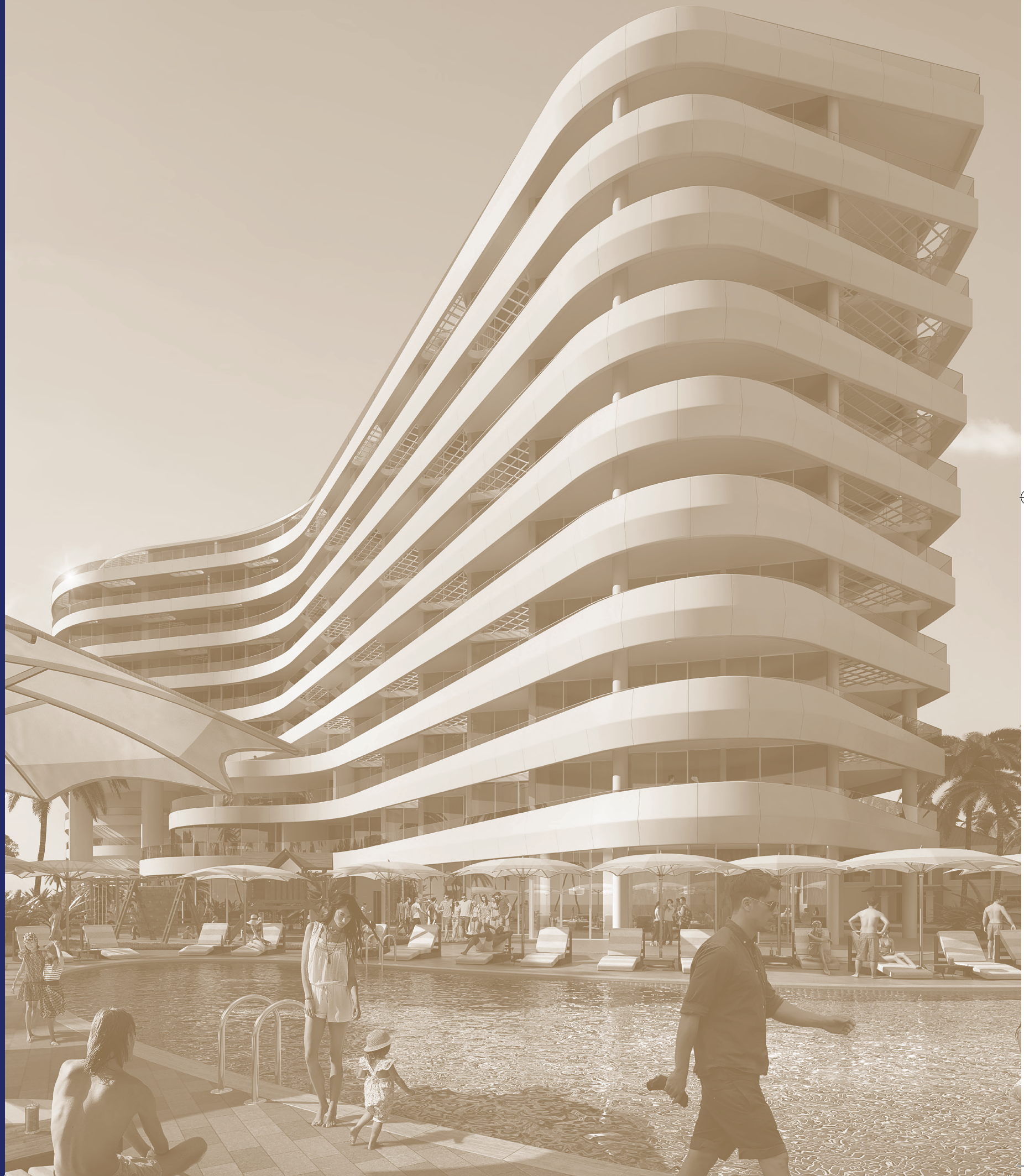
Synonymous with unparalleled excellence, impeccable service and unrivaled elegance. Contemporary and yet timeless.







inspiring
CONTEMPORARY ARCHITECTURE
design



FLAWLESSLY FITTING

With architecture that is a reflection of the embracing surf,
the connection with nature could not be more fluid.









11



12



13



14

BOUNDLESS COMFORT AND CALM

Every single bend and curve has been manipulated and inspired by its surroundings: the deep blue sea and the traditional sea-faring Dhows.

Residents are privy to a gallery of picture-postcard views of sparkling city lights as well as the memories they evoke. A masterpiece of modern living guarantees that no matter where you look, beauty will always be looking back at you.

11 A splendid and an exquisite view

12 Dhow cruising
A novel experience

13 Light that reflects upon the infinite turquoise sea

14 Radiant city lights



bespoke
AN EXTRAORDINARY LIFESTYLE IN AN
EXCEPTIONAL SETTING
lifestyle



LIVE IN NATURAL SYNCHRONICITY

Mina by Azizi celebrates the simple relationship between nature and people. It's a unique place to be at one with yourself, with your family and with your surroundings.





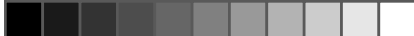


15

- 15 Inspiration from nature
- 16 Looking after your every need
- 17 Unparalleled services with oceanfront living
- 18 Served with love
- 19 Contemporary yet timeless lifestyle

PERFECTION – IN DETAIL AND SERVICE

The choices we make determine who we are. Residents are spoilt from the moment they arrive. Chauffeur-drivers, valet parking and personalised butlers are on call.



16



17



18



19







Room service, housekeeping and around the clock concierge and security offer residents an attentive, personal and chic touches, sought after by the world's most stylish people. Residents' needs are of utmost importance, that's why intuitive and personalised services are in place to make one's stay perfect.

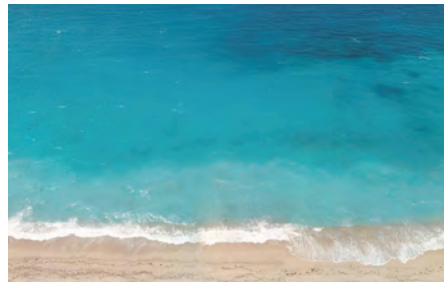


20



PREMIER PRIVACY

- 20 Exclusive private gardens for a morning stroll
- 21 Peaceful retreat away from the hustle and bustle of the city
- 22 Serene surroundings for a perfect escape
- 23 Make perfect memories



21



22



23

A beautiful equilibrium of style and panache is met with high quality, carefully crafted amenities, befitting luxury-focused individuals. A climate controlled infinity pool, state-of-the-art gym and play areas, private

gardens and, of course, residents' very own private beaches - all seconds away from front doors, miles away from crowds.





defined by
INTERIORS
details



BOUNDLESS COMFORT & CALM

A home that is grand and artistic, yet comfortable and familiar, a place where splendor and sophistication come together with flawless ease.









Expansive windows and spacious insides with contemporary lighting fixtures allow light to overtake all corners of the residencies. Fully equipped European-styled kitchens and dreamily oversized en-suite bathrooms and master suites offer the ultimate in both privacy and supreme comfort.

RELAXATION TAKEN TO A WHOLE NEW LEVEL

Paramount attention to detail.







- 24 Craftsman passion in every detail
- 25 Indulge in the simple pleasures of life
- 26 Light and space in perfect harmony
- 27 A sense of connection with nature
- 28 A perfect blend of comfort & elegance

DEFINED BY ITS DETAILS

Sea breezes, serene lights and welcoming spaces - exquisitely decorated in unique styles - give Mina a feeling above and beyond the extraordinary.

25



26



27

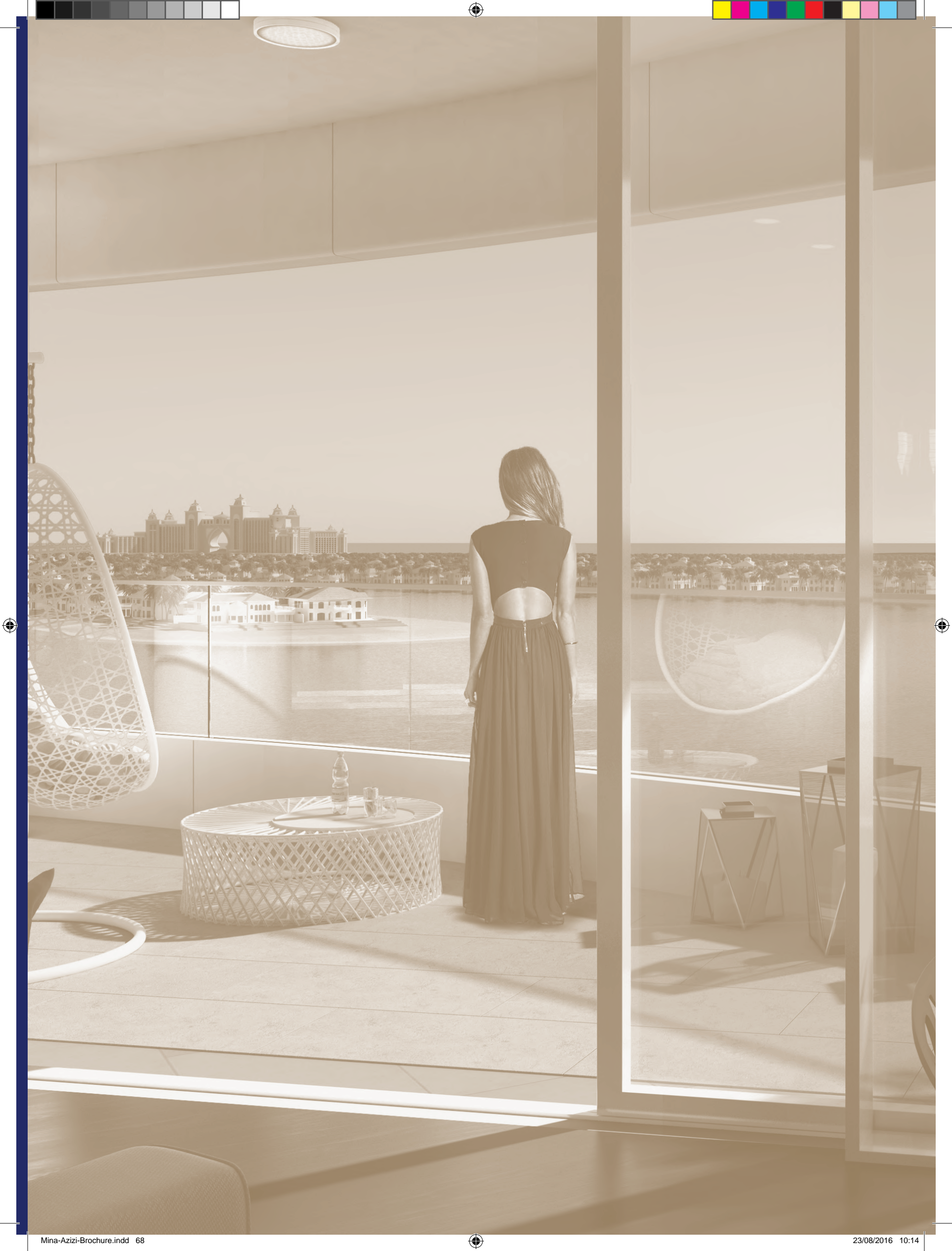


28





your opulent
PENTHOUSE
REFINEMENT IN THE HORIZON
sanctuary



DESIGNED WITH DISCRETE LUXURY

Sophisticated interiors with exquisite finishes.







- 29 Comfortable interiors complimenting the spectacular views
- 30 Beautifully laid out, state-of-the-art kitchen
- 31 An undeniable comfort at your home





30



31





COZY BEDROOMS DESIGNED EFFORTLESSLY

Comfort and luxury - a perfect blend.







- 32 Thoughtfully crafted bathroom to maximize comfort
- 33 Designed with simplicity and sophistication

- 34 Luxury and comfort
- 35 Indulge in the extravagance
- 36 Exclusively fashioned bathrooms

32





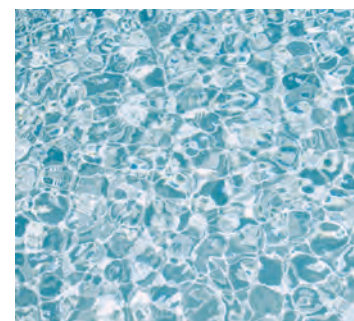
33



34



35



36



NO COMPROMISE ON THE QUALITY OF LIFESTYLE

A new standard for classical elegance.







Azizi Group was incorporated in 1989. With a superb track record of global real estate development, the group has delivered over 6000 units and 5500 plots in destinations worldwide including Moscow, Frankfurt, Central Asia and Dubai.

With an annual turnover exceeding USD 1.5 billion, Azizi Group has diversified operations in banking, oil & gas, tourism, hospitality and real estate across key international markets. The group's net worth stands in excess of USD 11 billion.

Azizi Developments, the real estate investment arm of Azizi Group, is one of the UAE's most financially sound developers. In Dubai, the group has invested over USD 1 billion in

Al Furjan, one of the city's most rewarding and upcoming areas in the south. Azizi Developments is also progressing exciting projects at iconic Palm Island and in Dubai Healthcare City.

With an extensive network and relationship with strategic partners, Azizi Developments consistently locates properties in prime investment areas with significant potential to increase the value for our customers.

With strong investment capital, the group always focuses on quality and timely delivery of projects. All projects are planned and executed by experienced professionals and use high quality construction materials, interior décor, to ensure that projects deliver returns in the long-term.