



Typical Floor Plan

Studio**J**

Unit Nos: 20, 21
Unit Type: J
Area: 46.562 sqmt. - 501.01 sqft.

Type - TJ

1. All room dimensions are measured to structural elements and exclude wall finishes and construction tolerances / 2. All dimensions have been provided by our consultant architects / 3. All materials, dimensions & drawing are approximate. Information is subject to change without notice. / 4. Actual suite area may vary from the stated area. Drawings not to scale. The developers reserve the right to make revisions. / 5. Calculation of suite area is measured as the area bounded by the centre line of demising or partition walls separating one unit from another unit, the exterior face of all exterior walls, and the exterior face of the corridor wall enclosing the joining unit. / 6. Calculation of balcony area is measured as the area bounded by the centre line of demising or partition walls separating one unit from another unit, the outermost face of the enclosing guard and the external face of the unit adjoining the balcony. / 7. The units are measured at typical floor in the building. Columns may vary in size depending on the floor level. Interior furnishing, Kitchen appliances and bath fixtures are indicative and large net area of studio may vary.

1 B/R**A**

Podium

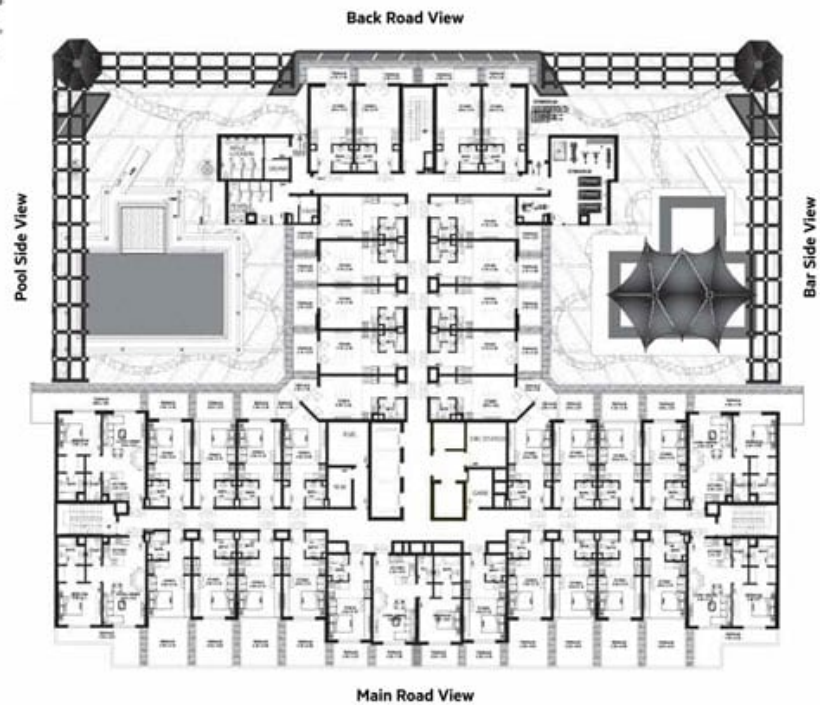


Unit Nos: 01, 32
Unit Type: 1 B/R Type A (Podium Level)
Area: 94.680 sqmt. - 1018.76 sqft.

Type - P1A

1. All room dimensions are measured to structural elements and exclude wall finishes and construction tolerances / 2. All dimensions have been provided by our consultant architects / 3. All materials, dimensions & drawing are approximate. Information is subject to change without notice. / 4. Actual suite area may vary from the stated area. Drawings not to scale. The developers reserve the right to make revisions. / 5. Calculation of suite area is measured as the area bounded by the centre line of demising or partition walls separating one unit from another unit, the exterior face of all exterior walls, and the exterior face of the corridor wall enclosing the joining unit. / 6. Calculation of balcony area is measured as the area bounded by the centre line of demising or partition walls separating one unit from another unit, the outermost face of the enclosing guard and the external face of the unit adjoining the balcony. / 7. The units are measured at typical floor in the building. Columns may vary in size depending on the floor level. Interior furnishing, Kitchen appliances and bath fixtures are indicative and large net area of studio may vary.

Podium Floor Plan



Typical Plan



Studio

A

Podium



Unit Nos: 02, 03, 04, 29, 30, 31

Unit Type: A (Podium Level)

Area: (02), (31) = 57,134 sqmt. - 614.76 sqft.

(03), (30) = 55,052 sqmt. - 592.35 sqft.

(04), (29) = 57,330 sqmt. - 616.87 sqft.

Type - PA

1. All room dimensions are measured to structural elements and exclude wall finishes and construction tolerances / 2. All dimensions have been provided by our consultant architects / 3. All materials, dimensions & drawing are approximate. Information is subject to change without notice. / 4. Actual suite area may vary from the stated area. Drawings not to scale. The developers reserve the right to make revisions. / 5. Calculation of suite area is measured as the area bounded by the centre line of demising or partition walls separating one unit from another unit, the exterior face of all exterior walls, and the exterior face of the corridor wall enclosing the joining unit. / 6. Calculation of balcony area is measured as the area bounded by the centre line of demising or partition walls separating one unit from another unit, the outermost face of the enclosing guard and the external face of the unit adjoining the balcony. / 7. The units are measured at typical floor in the building. Columns may vary in size depending on the floor level. Interior furnishing, Kitchen appliances and bath fixtures are indicative and large net area of studio may vary.

Studio

B

Podium



Unit Nos: 07,26

Unit Type: B (Podium Level)

Area: 45,987 sqmt. - 494.81 sqft.

Type - PB

1. All room dimensions are measured to structural elements and exclude wall finishes and construction tolerances / 2. All dimensions have been provided by our consultant architects / 3. All materials, dimensions & drawing are approximate. Information is subject to change without notice. / 4. Actual suite area may vary from the stated area. Drawings not to scale. The developers reserve the right to make revisions. / 5. Calculation of suite area is measured as the area bounded by the centre line of demising or partition walls separating one unit from another unit, the exterior face of all exterior walls, and the exterior face of the corridor wall enclosing the joining unit. / 6. Calculation of balcony area is measured as the area bounded by the centre line of demising or partition walls separating one unit from another unit, the outermost face of the enclosing guard and the external face of the unit adjoining the balcony. / 7. The units are measured at typical floor in the building. Columns may vary in size depending on the floor level. Interior furnishing, Kitchen appliances and bath fixtures are indicative and large net area of studio may vary.

Studio**C**

Podium



Unit Nos: 08, 25
Unit Type: C (Podium Level)
Area: (08) = 46.428 sqmt. - 499.56 sqft.
 (25) = 47.702 sqmt. - 513.27 sqft.

Type - PC

1. All room dimensions are measured to structural elements and exclude wall finishes and construction tolerances / 2. All dimensions have been provided by our consultant architects / 3. All materials, dimensions & drawing are approximate. Information is subject to change without notice. / 4. Actual suite area may vary from the stated area. The developers reserve the right to make revisions. / 5. Calculation of suite area is measured as the area bounded by the centre line of demising or partition walls separating one unit from another unit, the exterior face of all exterior walls, and the exterior face of the corridor wall enclosing the joining unit. / 6. Calculation of balcony area is measured as the area bounded by the centre line of demising or partition walls separating one unit from another unit, the outermost face of the enclosing guard and the external face of the unit adjoining the balcony. / 7. The units are measured at typical floor in the building. Columns may vary in size depending on the floor level. Interior furnishing, kitchen appliances and bath fixtures are indicative and large net area of studio may vary.

Studio**D**

Podium



Unit Nos: 09
Unit Type: D (Podium Level)
Area: 51.119 sqmt. - 550.04 sqft.

Type - PD

1. All room dimensions are measured to structural elements and exclude wall finishes and construction tolerances / 2. All dimensions have been provided by our consultant architects / 3. All materials, dimensions & drawing are approximate. Information is subject to change without notice. / 4. Actual suite area may vary from the stated area. The developers reserve the right to make revisions. / 5. Calculation of suite area is measured as the area bounded by the centre line of demising or partition walls separating one unit from another unit, the exterior face of all exterior walls, and the exterior face of the corridor wall enclosing the joining unit. / 6. Calculation of balcony area is measured as the area bounded by the centre line of demising or partition walls separating one unit from another unit, the outermost face of the enclosing guard and the external face of the unit adjoining the balcony. / 7. The units are measured at typical floor in the building. Columns may vary in size depending on the floor level. Interior furnishing, kitchen appliances and bath fixtures are indicative and large net area of studio may vary.

Studio**E**

Podium



Unit Nos: 24
Unit Type: E (Podium Level)
Area: 51.597 sqmt. - 555.18 sqft.

Type - PE

1. All room dimensions are measured to structural elements and exclude wall finishes and construction tolerances / 2. All dimensions have been provided by our consultant architects / 3. All materials, dimensions & drawing are approximate. Information is subject to change without notice. / 4. Actual suite area may vary from the stated area. The developers reserve the right to make revisions. / 5. Calculation of suite area is measured as the area bounded by the centre line of demising or partition walls separating one unit from another unit, the exterior face of all exterior walls, and the exterior face of the corridor wall enclosing the joining unit. / 6. Calculation of balcony area is measured as the area bounded by the centre line of demising or partition walls separating one unit from another unit, the outermost face of the enclosing guard and the external face of the unit adjoining the balcony. / 7. The units are measured at typical floor in the building. Columns may vary in size depending on the floor level. Interior furnishing, Kitchen appliances and bath fixtures are indicative and large net area of studio may vary.

Studio**F**

Podium



Unit Nos: 23
Unit Type: F (Podium Level)
Area: 45.068 sqmt. - 484.93 sqft.

Type - PF

1. All room dimensions are measured to structural elements and exclude wall finishes and construction tolerances / 2. All dimensions have been provided by our consultant architects / 3. All materials, dimensions & drawing are approximate. Information is subject to change without notice. / 4. Actual suite area may vary from the stated area. The developers reserve the right to make revisions. / 5. Calculation of suite area is measured as the area bounded by the centre line of demising or partition walls separating one unit from another unit, the exterior face of all exterior walls, and the exterior face of the corridor wall enclosing the joining unit. / 6. Calculation of balcony area is measured as the area bounded by the centre line of demising or partition walls separating one unit from another unit, the outermost face of the enclosing guard and the external face of the unit adjoining the balcony. / 7. The units are measured at typical floor in the building. Columns may vary in size depending on the floor level. Interior furnishing, Kitchen appliances and bath fixtures are indicative and large net area of studio may vary.

Studio**G**

Podium



Unit Nos: 10
Unit Type: G (Podium Level)
Area: 48.829 sqmt. - 525.39 sqft.

Type - PG

1. All room dimensions are measured to structural elements and exclude wall finishes and construction tolerances / 2. All dimensions have been provided by our consultant architects / 3. All materials, dimensions & drawing are approximate. Information is subject to change without notice. / 4. Actual suite area may vary from the stated area. Drawings not to scale. The developers reserve the right to make revisions. / 5. Calculation of suite area is measured as the area bounded by the centre line of demising or partition walls separating one unit from another unit, the exterior face of all exterior walls, and the exterior face of the corridor wall enclosing the joining unit. / 6. Calculation of balcony area is measured as the area bounded by the centre line of demising or partition walls separating one unit from another unit, the outermost face of the enclosing guard and the external face of the unit adjoining the balcony. / 7. The units are measured at typical floor in the building. Columns may vary in size depending on the floor level. Interior furnishing, Kitchen appliances and bath fixtures are indicative and large net area of studio may vary.

Studio**H**

Podium



Unit Nos: 22
Unit Type: H (Podium Level)
Area: 43.328 sqmt. - 466.21 sqft.

Type - PH

1. All room dimensions are measured to structural elements and exclude wall finishes and construction tolerances / 2. All dimensions have been provided by our consultant architects / 3. All materials, dimensions & drawing are approximate. Information is subject to change without notice. / 4. Actual suite area may vary from the stated area. Drawings not to scale. The developers reserve the right to make revisions. / 5. Calculation of suite area is measured as the area bounded by the centre line of demising or partition walls separating one unit from another unit, the exterior face of all exterior walls, and the exterior face of the corridor wall enclosing the joining unit. / 6. Calculation of balcony area is measured as the area bounded by the centre line of demising or partition walls separating one unit from another unit, the outermost face of the enclosing guard and the external face of the unit adjoining the balcony. / 7. The units are measured at typical floor in the building. Columns may vary in size depending on the floor level. Interior furnishing, Kitchen appliances and bath fixtures are indicative and large net area of studio may vary.

Studio**I**

Podium



Unit Nos: 11
Unit Type: I (Podium Level)
Area: 50.580 sqmt. - 544.24 sqft.

Type - PI

1. All room dimensions are measured to structural elements and exclude wall finishes and construction tolerances / 2. All dimensions have been provided by our consultant architects / 3. All materials, dimensions & drawing are approximate. Information is subject to change without notice. / 4. Actual suite area may vary from the stated area. The developers reserve the right to make revisions. / 5. Calculation of suite area is measured as the area bounded by the centre line of demising or partition walls separating one unit from another unit, the exterior face of all exterior walls, and the exterior face of the corridor wall enclosing the joining unit. / 6. Calculation of balcony area is measured as the area bounded by the centre line of demising or partition walls separating one unit from another unit, the outermost face of the enclosing guard and the external face of the unit adjoining the balcony. / 7. The units are measured at typical floor in the building. Columns may vary in size depending on the floor level. Interior furnishing, kitchen appliances and bath fixtures are indicative and large net area of studio may vary.

Studio**J**

Podium



Unit Nos: 20, 21
Unit Type: J (Podium Level)
Area: (20) = 46.097 sqmt. - 496.00 sqft.
 (21) = 46.109 sqmt. - 496.13 sqft.

Type - PJ

1. All room dimensions are measured to structural elements and exclude wall finishes and construction tolerances / 2. All dimensions have been provided by our consultant architects / 3. All materials, dimensions & drawing are approximate. Information is subject to change without notice. / 4. Actual suite area may vary from the stated area. The developers reserve the right to make revisions. / 5. Calculation of suite area is measured as the area bounded by the centre line of demising or partition walls separating one unit from another unit, the exterior face of all exterior walls, and the exterior face of the corridor wall enclosing the joining unit. / 6. Calculation of balcony area is measured as the area bounded by the centre line of demising or partition walls separating one unit from another unit, the outermost face of the enclosing guard and the external face of the unit adjoining the balcony. / 7. The units are measured at typical floor in the building. Columns may vary in size depending on the floor level. Interior furnishing, kitchen appliances and bath fixtures are indicative and large net area of studio may vary.

Studio**K**

Podium



Unit Nos: 12
Unit Type: K (Podium Level)
Area: 49,992 sqmt. - 53,792 sqft.

Type - PK

1. All room dimensions are measured to structural elements and exclude wall finishes and construction tolerances / 2. All dimensions have been provided by our consultant architects / 3. All materials, dimensions & drawing are approximate. Information is subject to change without notice. / 4. Actual suite area may vary from the stated area. The developers reserve the right to make revisions. / 5. Calculation of suite area is measured as the area bounded by the centre line of demising or partition walls separating one unit from another unit, the exterior face of all exterior walls, and the exterior face of the corridor wall enclosing the joining unit. / 6. Calculation of balcony area is measured as the area bounded by the centre line of demising or partition walls separating one unit from another unit, the outermost face of the enclosing guard and the external face of the unit adjoining the balcony. / 7. The units are measured at typical floor in the building. Columns may vary in size depending on the floor level. Interior furnishing, kitchen appliances and bath fixtures are indicative and large net area of studio may vary.

Studio**L**

Podium



Unit Nos: 13
Unit Type: L (Podium Level)
Area: 51,671 sqmt. - 555,97 sqft.

Type - PL

1. All room dimensions are measured to structural elements and exclude wall finishes and construction tolerances / 2. All dimensions have been provided by our consultant architects / 3. All materials, dimensions & drawing are approximate. Information is subject to change without notice. / 4. Actual suite area may vary from the stated area. The developers reserve the right to make revisions. / 5. Calculation of suite area is measured as the area bounded by the centre line of demising or partition walls separating one unit from another unit, the exterior face of all exterior walls, and the exterior face of the corridor wall enclosing the joining unit. / 6. Calculation of balcony area is measured as the area bounded by the centre line of demising or partition walls separating one unit from another unit, the outermost face of the enclosing guard and the external face of the unit adjoining the balcony. / 7. The units are measured at typical floor in the building. Columns may vary in size depending on the floor level. Interior furnishing, kitchen appliances and bath fixtures are indicative and large net area of studio may vary.

Studio**M**

Podium



Unit Nos: 14
Unit Type: M (Podium Level)
Area: 52.063 sqmt. - 560.19 sqft.

Type - PM

1. All room dimensions are measured to structural elements and exclude wall finishes and construction tolerances / 2. All dimensions have been provided by our consultant architects / 3. All materials, dimensions & drawing are approximate. Information is subject to change without notice. / 4. Actual suite area may vary from the stated area. The developers reserve the right to make revisions. / 5. Calculation of suite area is measured as the area bounded by the centre line of demising or partition walls separating one unit from another unit, the exterior face of all exterior walls, and the exterior face of the corridor wall enclosing the joining unit. / 6. Calculation of balcony area is measured as the area bounded by the centre line of demising or partition walls separating one unit from another unit, the outermost face of the enclosing guard and the external face of the unit adjoining the balcony. / 7. The units are measured at typical floor in the building. Columns may vary in size depending on the floor level. Interior furnishing, kitchen appliances and bath fixtures are indicative and large net area of studio may vary.

Studio**N**

Podium



Unit Nos: 19
Unit Type: N (Podium Level)
Area: 46.513 sqmt. - 500.48 sqft.

Type - PN

1. All room dimensions are measured to structural elements and exclude wall finishes and construction tolerances / 2. All dimensions have been provided by our consultant architects / 3. All materials, dimensions & drawing are approximate. Information is subject to change without notice. / 4. Actual suite area may vary from the stated area. The developers reserve the right to make revisions. / 5. Calculation of suite area is measured as the area bounded by the centre line of demising or partition walls separating one unit from another unit, the exterior face of all exterior walls, and the exterior face of the corridor wall enclosing the joining unit. / 6. Calculation of balcony area is measured as the area bounded by the centre line of demising or partition walls separating one unit from another unit, the outermost face of the enclosing guard and the external face of the unit adjoining the balcony. / 7. The units are measured at typical floor in the building. Columns may vary in size depending on the floor level. Interior furnishing, kitchen appliances and bath fixtures are indicative and large net area of studio may vary.

Studio

O

Podium



Unit Nos: 16, 17
Unit Type: O (Podium Level)
Area: (16) = 47,395 sqmt. - 509.97 sqft.
(17) = 47,126 sqmt. - 507.07 sqft.

Type - PO

1. All room dimensions are measured to structural elements and exclude wall finishes and construction tolerances / 2. All dimensions have been provided by our consultant architects / 3. All materials, dimensions & drawing are approximate. Information is subject to change without notice. / 4. Actual suite area may vary from the stated area. The developers reserve the right to make revisions. / 5. Calculation of suite area is measured as the area bounded by the centre line of demising or partition walls separating one unit from another unit, the exterior face of all exterior walls, and the exterior face of the corridor wall enclosing the joining unit. / 6. Calculation of balcony area is measured as the area bounded by the centre line of demising or partition walls separating one unit from another unit, the outermost face of the enclosing guard and the external face of the unit adjoining the balcony. / 7. The units are measured at typical floor in the building. Columns may vary in size depending on the floor level. Interior furnishing, kitchen appliances and bath fixtures are indicative and large net area of studio may vary.

Studio

A



Unit Nos: 02, 03, 04, 29, 30, 31
Unit Type: A
Area: (02), (31) = 44,884 sqmt. - 482.95 sqft.
(03), (30) = 44,174 sqmt. - 475.31 sqft.
(04), (29) = 44,272 sqmt. - 476.36 sqft.

Type - TA

1. All room dimensions are measured to structural elements and exclude wall finishes and construction tolerances / 2. All dimensions have been provided by our consultant architects / 3. All materials, dimensions & drawing are approximate. Information is subject to change without notice. / 4. Actual suite area may vary from the stated area. The developers reserve the right to make revisions. / 5. Calculation of suite area is measured as the area bounded by the centre line of demising or partition walls separating one unit from another unit, the exterior face of all exterior walls, and the exterior face of the corridor wall enclosing the joining unit. / 6. Calculation of balcony area is measured as the area bounded by the centre line of demising or partition walls separating one unit from another unit, the outermost face of the enclosing guard and the external face of the unit adjoining the balcony. / 7. The units are measured at typical floor in the building. Columns may vary in size depending on the floor level. Interior furnishing, kitchen appliances and bath fixtures are indicative and large net area of studio may vary.

Studio B

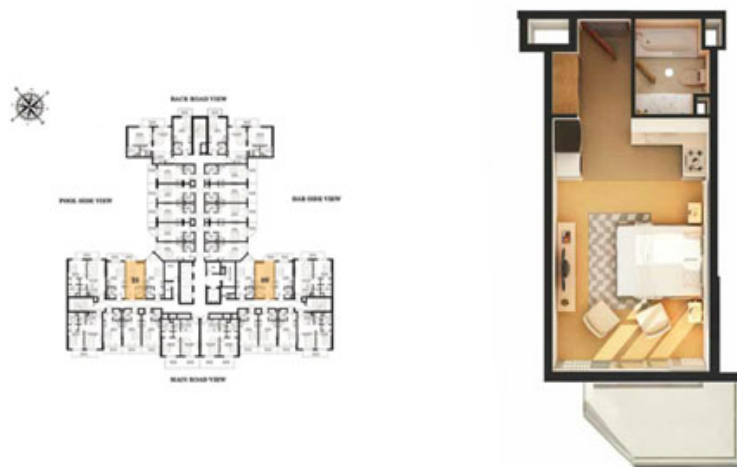


Unit Nos: 07, 26
Unit Type: B
Area: 43,965 sqmt. - 473.07 sqft.

Type - TB

1. All room dimensions are measured to structural elements and exclude wall finishes and construction tolerances / 2. All dimensions have been provided by our consultant architects / 3. All materials, dimensions & drawing are approximate. Information is subject to change without notice. / 4. Actual suite area may vary from the stated area. Drawings not to scale. The developers reserve the right to make revisions. / 5. Calculation of suite area is measured as the area bounded by the centre line of demising or partition walls separating one unit from another unit, the exterior face of all exterior walls, and the exterior face of the corridor wall enclosing the joining unit. / 6. Calculation of balcony area is measured as the area bounded by the centre line of demising or partition walls separating one unit from another unit, the outdoor face of the enclosing guard and the external face of the unit adjoining the balcony. / 7. The units are measured at typical floor in the building. Columns may vary in size depending on the floor level. Interior furnishing, kitchen appliances and bath fixtures are indicative and large net area of studio may vary.

Studio C



Unit Nos: 08, 25
Unit Type: C
Area: 41,981 sqmt. - 451.71 sqft.

Type - TC

1. All room dimensions are measured to structural elements and exclude wall finishes and construction tolerances / 2. All dimensions have been provided by our consultant architects / 3. All materials, dimensions & drawing are approximate. Information is subject to change without notice. / 4. Actual suite area may vary from the stated area. Drawings not to scale. The developers reserve the right to make revisions. / 5. Calculation of suite area is measured as the area bounded by the centre line of demising or partition walls separating one unit from another unit, the exterior face of all exterior walls, and the exterior face of the corridor wall enclosing the joining unit. / 6. Calculation of balcony area is measured as the area bounded by the centre line of demising or partition walls separating one unit from another unit, the outdoor face of the enclosing guard and the external face of the unit adjoining the balcony. / 7. The units are measured at typical floor in the building. Columns may vary in size depending on the floor level. Interior furnishing, kitchen appliances and bath fixtures are indicative and large net area of studio may vary.

Studio D



Unit Nos: 09
Unit Type: D
Area: 40.560 sqmt. - 436.42 sqft.

Type - TD

1. All room dimensions are measured to structural elements and exclude wall finishes and construction tolerances / 2. All dimensions have been provided by our consultant architects / 3. All materials, dimensions & drawing are approximate. Information is subject to change without notice. / 4. Actual suite area may vary from the stated area. The developers reserve the right to make revisions. / 5. Calculation of suite area is measured as the area bounded by the centre line of demising or partition walls separating one unit from another unit, the exterior face of all exterior walls, and the exterior face of the corridor wall enclosing the joining unit. / 6. Calculation of balcony area is measured as the area bounded by the centre line of demising or partition walls separating one unit from another unit, the outermost face of the enclosing guard and the external face of the unit adjoining the balcony. / 7. The units are measured at typical floor in the building. Columns may vary in size depending on the floor level. Interior furnishing, kitchen appliances and bath fixtures are indicative and large net area of studio may vary.

Studio E



Unit Nos: 24
Unit Type: E
Area: 41.515 sqmt. - 446.70 sqft.

Type - TE

1. All room dimensions are measured to structural elements and exclude wall finishes and construction tolerances / 2. All dimensions have been provided by our consultant architects / 3. All materials, dimensions & drawing are approximate. Information is subject to change without notice. / 4. Actual suite area may vary from the stated area. The developers reserve the right to make revisions. / 5. Calculation of suite area is measured as the area bounded by the centre line of demising or partition walls separating one unit from another unit, the exterior face of all exterior walls, and the exterior face of the corridor wall enclosing the joining unit. / 6. Calculation of balcony area is measured as the area bounded by the centre line of demising or partition walls separating one unit from another unit, the outermost face of the enclosing guard and the external face of the unit adjoining the balcony. / 7. The units are measured at typical floor in the building. Columns may vary in size depending on the floor level. Interior furnishing, kitchen appliances and bath fixtures are indicative and large net area of studio may vary.

Studio F



Unit Nos: 23
Unit Type: F
Area: 37,497 sqmt. - 403.47 sqft.

Type - TF

1. All room dimensions are measured to structural elements and exclude wall finishes and construction tolerances / 2. All dimensions have been provided by our consultant architects / 3. All materials, dimensions & drawing are approximate. Information is subject to change without notice. / 4. Actual suite area may vary from the stated area. Drawings not to scale. The developers reserve the right to make revisions. / 5. Calculation of suite area is measured as the area bounded by the centre line of demising or partition walls separating one unit from another unit, the exterior face of all exterior walls, and the exterior face of the corridor wall enclosing the joining unit. / 6. Calculation of balcony area is measured as the area bounded by the centre line of demising or partition walls separating one unit from another unit, the outermost face of the enclosing guard and the external face of the unit adjoining the balcony. / 7. The units are measured at typical floor in the building. Columns may vary in size depending on the floor level. Interior furnishing, kitchen appliances and bath fixtures are indicative and large net area of studio may vary.

Studio G



Unit Nos: 10
Unit Type: G
Area: 41,368 sqmt. - 445.12 sqft.

Type - TG

1. All room dimensions are measured to structural elements and exclude wall finishes and construction tolerances / 2. All dimensions have been provided by our consultant architects / 3. All materials, dimensions & drawing are approximate. Information is subject to change without notice. / 4. Actual suite area may vary from the stated area. Drawings not to scale. The developers reserve the right to make revisions. / 5. Calculation of suite area is measured as the area bounded by the centre line of demising or partition walls separating one unit from another unit, the exterior face of all exterior walls, and the exterior face of the corridor wall enclosing the joining unit. / 6. Calculation of balcony area is measured as the area bounded by the centre line of demising or partition walls separating one unit from another unit, the outermost face of the enclosing guard and the external face of the unit adjoining the balcony. / 7. The units are measured at typical floor in the building. Columns may vary in size depending on the floor level. Interior furnishing, kitchen appliances and bath fixtures are indicative and large net area of studio may vary.

Studio H



Unit Nos: 22
Unit Type: H
Area: 43,157 sqmt. - 464.37 sqft.

Type - TH

1. All room dimensions are measured to structural elements and exclude wall finishes and construction tolerances / 2. All dimensions have been provided by our consultant architects / 3. All materials, dimensions & drawing are approximate. Information is subject to change without notice. / 4. Actual suite area may vary from the stated area. Drawings not to scale. The developers reserve the right to make revisions. / 5. Calculation of suite area is measured as the area bounded by the centre line of demising or partition walls separating one unit from another unit, the exterior face of all exterior walls, and the exterior face of the corridor wall enclosing the joining unit. / 6. Calculation of balcony area is measured as the area bounded by the centre line of demising or partition walls separating one unit from another unit, the outermost face of the enclosing guard and the external face of the unit adjoining the balcony. / 7. The units are measured at typical floor in the building. Columns may vary in size depending on the floor level. Interior furnishing, kitchen appliances and bath fixtures are indicative and large net area of studio may vary.

Studio I



Unit Nos: 11
Unit Type: I
Area: 48,706 sqmt. - 524.08 sqft.

Type - TI

1. All room dimensions are measured to structural elements and exclude wall finishes and construction tolerances / 2. All dimensions have been provided by our consultant architects / 3. All materials, dimensions & drawing are approximate. Information is subject to change without notice. / 4. Actual suite area may vary from the stated area. Drawings not to scale. The developers reserve the right to make revisions. / 5. Calculation of suite area is measured as the area bounded by the centre line of demising or partition walls separating one unit from another unit, the exterior face of all exterior walls, and the exterior face of the corridor wall enclosing the joining unit. / 6. Calculation of balcony area is measured as the area bounded by the centre line of demising or partition walls separating one unit from another unit, the outermost face of the enclosing guard and the external face of the unit adjoining the balcony. / 7. The units are measured at typical floor in the building. Columns may vary in size depending on the floor level. Interior furnishing, kitchen appliances and bath fixtures are indicative and large net area of studio may vary.

1 B/R**B**

Podium

**Unit Nos:** 05, 28**Unit Type:** 1 B/R Type B (Podium Level)

Area: (05) = 84.256 sqmt. - 906.56 sqft.
 (28) = 83.962 sqmt. - 903.43 sqft.

Type - P1B

1. All room dimensions are measured to structural elements and exclude wall finishes and construction tolerances / 2. All dimensions have been provided by our consultant architects / 3. All materials, dimensions & drawing are approximate. Information is subject to change without notice. / 4. Actual suite area may vary from the stated area. The developers reserve the right to make revisions. / 5. Calculation of suite area is measured as the area bounded by the centre line of demising or partition walls separating one unit from another unit, the exterior face of all exterior walls, and the exterior face of the corridor wall enclosing the joining unit. / 6. Calculation of balcony area is measured as the area bounded by the centre line of demising or partition walls separating one unit from another unit, the outermost face of the enclosing guard and the external face of the unit adjoining the balcony. / 7. The units are measured at typical floor in the building. Columns may vary in size depending on the floor level. Interior furnishing, kitchen appliances and bath fixtures are indicative and large net area of studio may vary.

1 B/R**C**

Podium

**Unit Nos:** 06, 27**Unit Type:** 1 B/R Type C (Podium Level)

Area: 92.586 sqmt. - 996.22 sqft.

Type - P1C

1. All room dimensions are measured to structural elements and exclude wall finishes and construction tolerances / 2. All dimensions have been provided by our consultant architects / 3. All materials, dimensions & drawing are approximate. Information is subject to change without notice. / 4. Actual suite area may vary from the stated area. The developers reserve the right to make revisions. / 5. Calculation of suite area is measured as the area bounded by the centre line of demising or partition walls separating one unit from another unit, the exterior face of all exterior walls, and the exterior face of the corridor wall enclosing the joining unit. / 6. Calculation of balcony area is measured as the area bounded by the centre line of demising or partition walls separating one unit from another unit, the outermost face of the enclosing guard and the external face of the unit adjoining the balcony. / 7. The units are measured at typical floor in the building. Columns may vary in size depending on the floor level. Interior furnishing, kitchen appliances and bath fixtures are indicative and large net area of studio may vary.

1 B/R**A****Unit Nos:** 01, 32**Unit Type:** 1 B/R Type A

Area: (01) = 96.640 sqmt. - 1039.85 sqft.
 (32) = 96.751 sqmt. - 1041.04 sqft.

Type - T1A

1. All room dimensions are measured to structural elements and exclude wall finishes and construction tolerances / 2. All dimensions have been provided by our consultant architects / 3. All materials, dimensions & drawing are approximate. Information is subject to change without notice. / 4. Actual suite area may vary from the stated area. Drawings not to scale. The developers reserve the right to make revisions. / 5. Calculation of suite area is measured as the area bounded by the centre line of demising or partition walls separating one unit from another unit, the exterior face of all exterior walls, and the exterior face of the corridor wall enclosing the joining unit. / 6. Calculation of balcony area is measured as the area bounded by the centre line of demising or partition walls separating one unit from another unit, the outermost face of the enclosing guard and the external face of the unit adjoining the balcony. / 7. The units are measured at typical floor in the building. Columns may vary in size depending on the floor level. Interior furnishing, kitchen appliances and bath fixtures are indicative and large net area of studio may vary.

1 B/R**B****Unit Nos:** 05, 28**Unit Type:** 1 B/R Type B

Area: (05) = 77.947 sqmt. - 838.71 sqft.
 (28) = 77.665 sqmt. - 835.68 sqft.

Type - T1B

1. All room dimensions are measured to structural elements and exclude wall finishes and construction tolerances / 2. All dimensions have been provided by our consultant architects / 3. All materials, dimensions & drawing are approximate. Information is subject to change without notice. / 4. Actual suite area may vary from the stated area. Drawings not to scale. The developers reserve the right to make revisions. / 5. Calculation of suite area is measured as the area bounded by the centre line of demising or partition walls separating one unit from another unit, the exterior face of all exterior walls, and the exterior face of the corridor wall enclosing the joining unit. / 6. Calculation of balcony area is measured as the area bounded by the centre line of demising or partition walls separating one unit from another unit, the outermost face of the enclosing guard and the external face of the unit adjoining the balcony. / 7. The units are measured at typical floor in the building. Columns may vary in size depending on the floor level. Interior furnishing, kitchen appliances and bath fixtures are indicative and large net area of studio may vary.

1 B/R**C**

Unit Nos: 06, 27
Unit Type: 1 B/R Type C
Area: (06) = 84.243 sqmt. - 906.46 sqft.
 (27) = 84.464 sqmt. - 908.83 sqft.

Type - T1C

1. All room dimensions are measured to structural elements and exclude wall finishes and construction tolerances / 2. All dimensions have been provided by our consultant architects / 3. All materials, dimensions & drawing are approximate. Information is subject to change without notice. / 4. Actual suite area may vary from the stated area. Drawings not to scale. The developers reserve the right to make revisions. / 5. Calculation of suite area is measured as the area bounded by the centre line of demising or partition walls separating one unit from another unit, the exterior face of all exterior walls, and the exterior face of the corridor wall enclosing the joining unit. / 6. Calculation of balcony area is measured as the area bounded by the centre line of demising or partition walls separating one unit from another unit, the outdoor face of the enclosing guard and the external face of the unit adjoining the balcony. / 7. The units are measured at typical floor in the building. Columns may vary in size depending on the floor level. Interior furnishing, kitchen appliances and bath fixtures are indicative and large net area of studio may vary.

1 B/R**D**

Unit Nos: 15, 18
Unit Type: 1 B/R Type D
Area: (15) = 87.306 sqmt. - 939.41 sqft.
 (18) = 87.918 sqmt. - 946.00 sqft.

Type - T1D

1. All room dimensions are measured to structural elements and exclude wall finishes and construction tolerances / 2. All dimensions have been provided by our consultant architects / 3. All materials, dimensions & drawing are approximate. Information is subject to change without notice. / 4. Actual suite area may vary from the stated area. Drawings not to scale. The developers reserve the right to make revisions. / 5. Calculation of suite area is measured as the area bounded by the centre line of demising or partition walls separating one unit from another unit, the exterior face of all exterior walls, and the exterior face of the corridor wall enclosing the joining unit. / 6. Calculation of balcony area is measured as the area bounded by the centre line of demising or partition walls separating one unit from another unit, the outdoor face of the enclosing guard and the external face of the unit adjoining the balcony. / 7. The units are measured at typical floor in the building. Columns may vary in size depending on the floor level. Interior furnishing, kitchen appliances and bath fixtures are indicative and large net area of studio may vary.