



*Roy Mediterranean*  
SERVICED APARTMENTS

روي ميديتيرينيان  
شقق مخدمة

# Typical Floor Plan

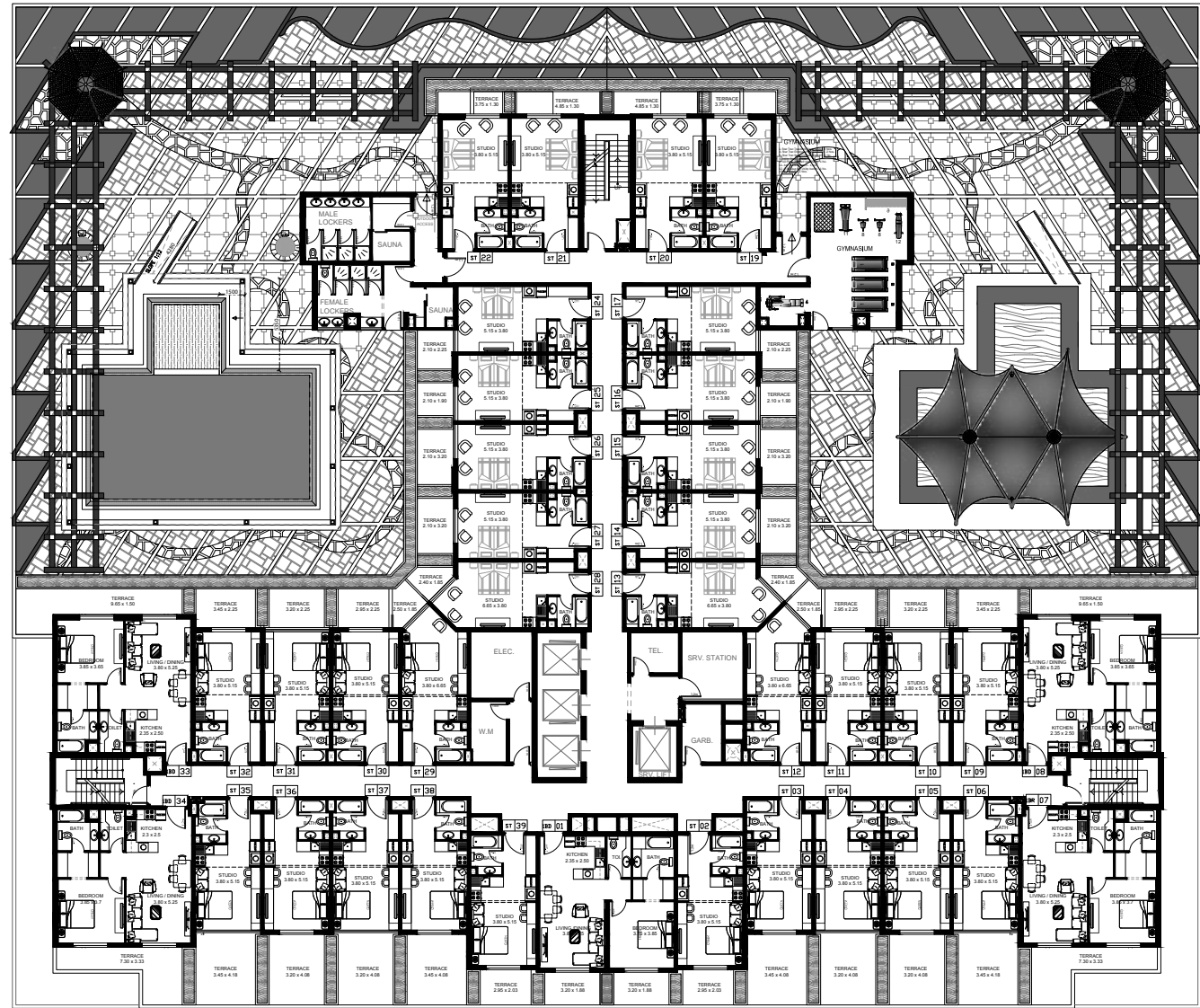
## نموذج لتصميم الطوابق

# Podium Floor Plan



Back Road View

Pool Side View



Main Road View

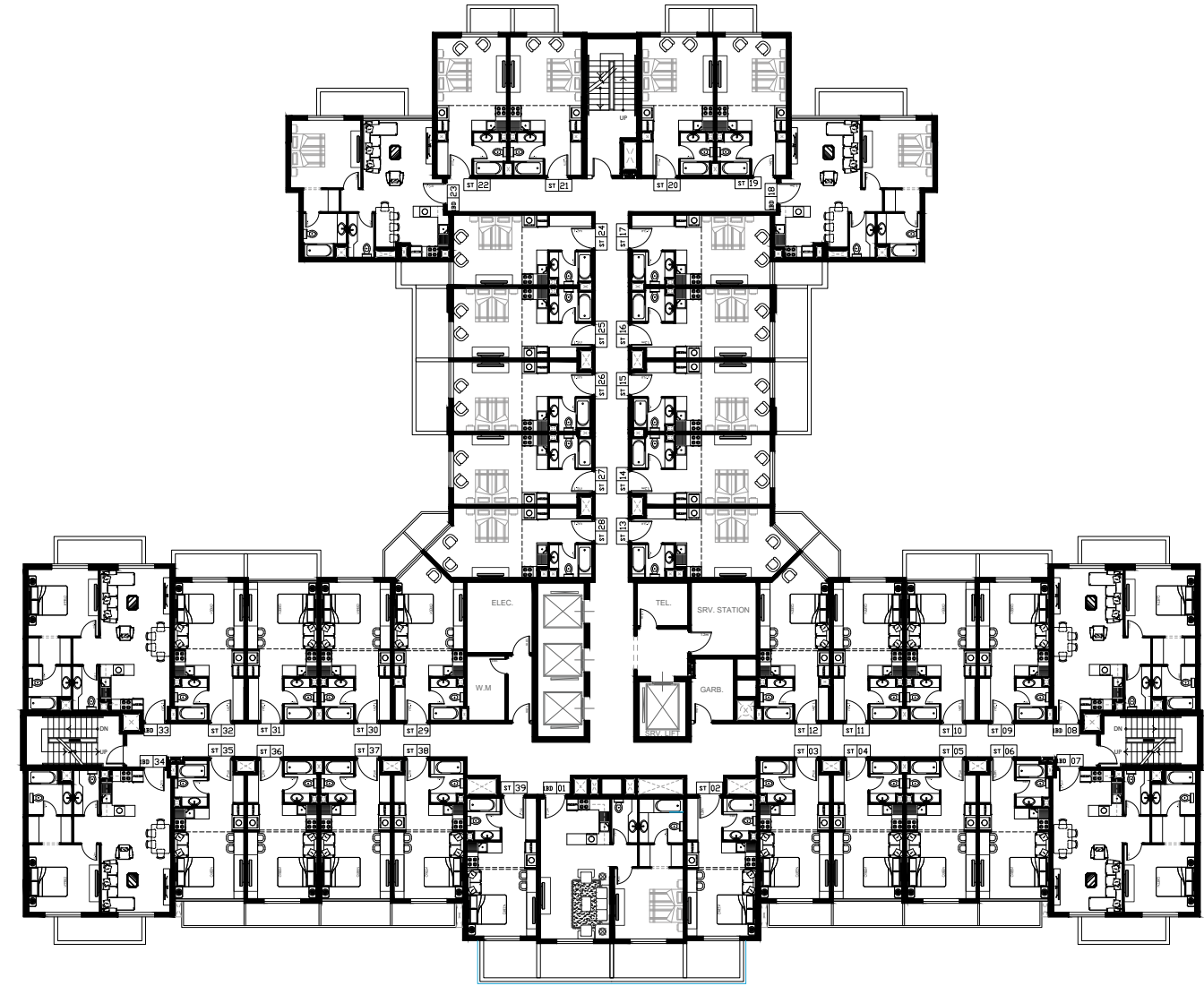
Cafe Side View

# Typical Plan



Back Road View

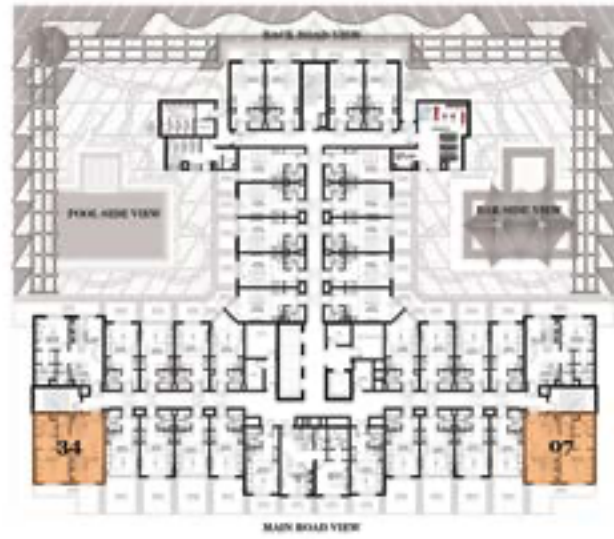
Pool Side View



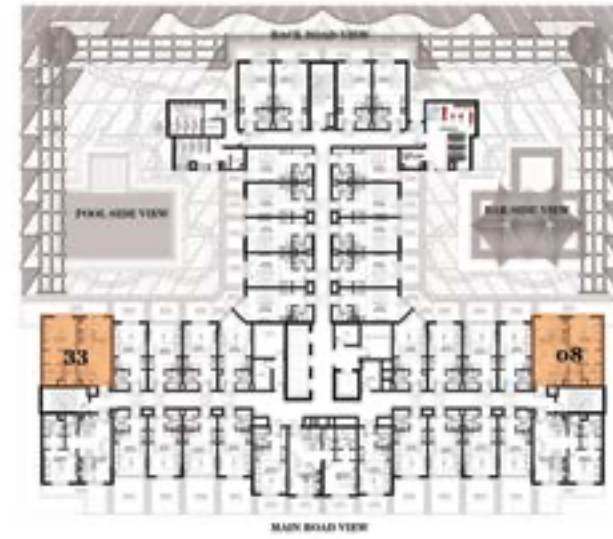
Main Road View

Cafe Side View

<b>1 B/R</b>	<b>A</b>
	Podium



<b>1 B/R</b>	<b>B</b>
	Podium



**Unit Nos:** 07, 34  
**Unit Type:** 1 B/R Type A (Podium Level)  
**Area:** (07) = 79.44 sqmt. - 104.710 sqft.

**Type - A1P**

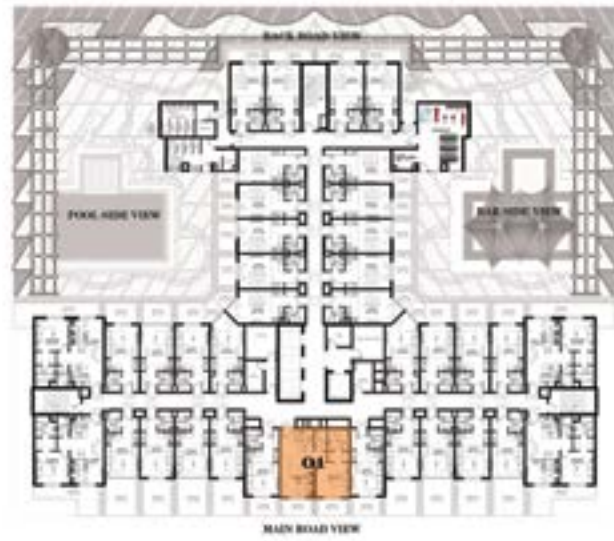
**Unit Nos:** 08, 33  
**Unit Type:** 1 B/R Type B (Podium Level)  
**Area:** (08) = 83.02 sqmt. - 1094.29 sqft.

**Type - B1P**

1. All room dimensions are measured to structural elements and exclude wall finishes and construction tolerances / 2. All dimensions have been provided by our consultant architects. / 3. All materials, dimensions & drawing are approximate. Information is subject to change without notice. / 4. Actual suite area may vary from the stated area. Drawings not to scale. The developers reserve the right to make revisions. / 5. Calculation of suite area is measured as the area bounded by the centre line of demising or partition walls separating one unit from another unit, the exterior face of all exterior walls, and the exterior face of the corridor wall enclosing the joining unit. / 6. Calculation of balcony area is measured as the area bounded by the centre line of demising or partition walls separating one unit from another unit, the outmost face of the enclosing guard and the external face of the unit adjoining the balcony. / 7. The units are measured at typical floor in the building. Columns may vary in size depending on the floor level. Interior furnishing, Kitchen appliances and bath fixtures are indicative and large net area of studio may vary.

1. All room dimensions are measured to structural elements and exclude wall finishes and construction tolerances / 2. All dimensions have been provided by our consultant architects. / 3. All materials, dimensions & drawing are approximate. Information is subject to change without notice. / 4. Actual suite area may vary from the stated area. Drawings not to scale. The developers reserve the right to make revisions. / 5. Calculation of suite area is measured as the area bounded by the centre line of demising or partition walls separating one unit from another unit, the exterior face of all exterior walls, and the exterior face of the corridor wall enclosing the joining unit. / 6. Calculation of balcony area is measured as the area bounded by the centre line of demising or partition walls separating one unit from another unit, the outmost face of the enclosing guard and the external face of the unit adjoining the balcony. / 7. The units are measured at typical floor in the building. Columns may vary in size depending on the floor level. Interior furnishing, Kitchen appliances and bath fixtures are indicative and large net area of studio may vary.

<b>1 B/R</b>	<b>C</b>
	Podium



**Unit Nos:** 01  
**Unit Type:** 1 B/R Type C (Podium Level)  
**Area:** (01) = 77.16 sqmt. - 1017.05 sqft.

**Type - C1P**

1. All room dimensions are measured to structural elements and exclude wall finishes and construction tolerances / 2. All dimensions have been provided by our consultant architects. / 3. All materials, dimensions & drawing are approximate. Information is subject to change without notice. / 4. Actual suite area may vary from the stated area. Drawings not to scale. The developers reserve the right to make revisions. / 5. Calculation of suite area is measured as the area bounded by the centre line of demising or partition walls separating one unit from another unit, the exterior face of all exterior walls, and the exterior face of the corridor wall enclosing the joining unit. / 6. Calculation of balcony area is measured as the area bounded by the centre line of demising or partition walls separating one unit from another unit, the outmost face of the enclosing guard and the external face of the unit adjoining the balcony. / 7. The units are measured at typical floor in the building. Columns may vary in size depending on the floor level. Interior furnishing, Kitchen appliances and bath fixtures are indicative and large net area of studio may vary.

<b>1 B/R</b>	<b>A</b>
	Typical



**Unit Nos:** 07, 08, 33, 34  
**Unit Type:** 1 B/R Type A  
**Area:** 71.40 sqmt. - 941.12 sqft.

**Type - A1T**

1. All room dimensions are measured to structural elements and exclude wall finishes and construction tolerances / 2. All dimensions have been provided by our consultant architects. / 3. All materials, dimensions & drawing are approximate. Information is subject to change without notice. / 4. Actual suite area may vary from the stated area. Drawings not to scale. The developers reserve the right to make revisions. / 5. Calculation of suite area is measured as the area bounded by the centre line of demising or partition walls separating one unit from another unit, the exterior face of all exterior walls, and the exterior face of the corridor wall enclosing the joining unit. / 6. Calculation of balcony area is measured as the area bounded by the centre line of demising or partition walls separating one unit from another unit, the outmost face of the enclosing guard and the external face of the unit adjoining the balcony. / 7. The units are measured at typical floor in the building. Columns may vary in size depending on the floor level. Interior furnishing, Kitchen appliances and bath fixtures are indicative and large net area of studio may vary.

1 B/R	B
	Typical



1 B/R	C
	Typical



**Unit Nos:** 01  
**Unit Type:** 1 B/R Type B  
**Area:** 80 sqmt. - 1054.48 sqft.

**Type - B1T**

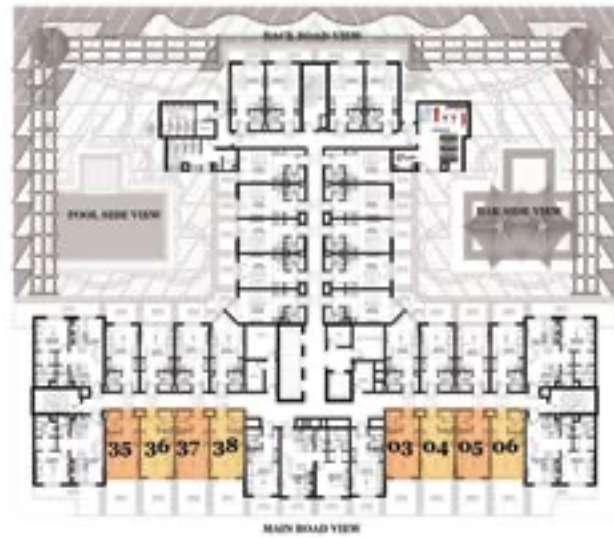
**Unit Nos:** 18, 23  
**Unit Type:** 1 B/R Type C  
**Area:** 67.95 sqmt. - 895.65 sqft.

**Type - C1T**

1. All room dimensions are measured to structural elements and exclude wall finishes and construction tolerances / 2. All dimensions have been provided by our consultant architects. / 3. All materials, dimensions & drawing are approximate. Information is subject to change without notice. / 4. Actual suite area may vary from the stated area. Drawings not to scale. The developers reserve the right to make revisions. / 5. Calculation of suite area is measured as the area bounded by the centre line of demising or partition walls separating one unit from another unit, the exterior face of all exterior walls, and the exterior face of the corridor wall enclosing the joining unit. / 6. Calculation of balcony area is measured as the area bounded by the centre line of demising or partition walls separating one unit from another unit, the outmost face of the enclosing guard and the external face of the unit adjoining the balcony. / 7. The units are measured at typical floor in the building. Columns may vary in size depending on the floor level. Interior furnishing, Kitchen appliances and bath fixtures are indicative and large net area of studio may vary.

1. All room dimensions are measured to structural elements and exclude wall finishes and construction tolerances / 2. All dimensions have been provided by our consultant architects. / 3. All materials, dimensions & drawing are approximate. Information is subject to change without notice. / 4. Actual suite area may vary from the stated area. Drawings not to scale. The developers reserve the right to make revisions. / 5. Calculation of suite area is measured as the area bounded by the centre line of demising or partition walls separating one unit from another unit, the exterior face of all exterior walls, and the exterior face of the corridor wall enclosing the joining unit. / 6. Calculation of balcony area is measured as the area bounded by the centre line of demising or partition walls separating one unit from another unit, the outmost face of the enclosing guard and the external face of the unit adjoining the balcony. / 7. The units are measured at typical floor in the building. Columns may vary in size depending on the floor level. Interior furnishing, Kitchen appliances and bath fixtures are indicative and large net area of studio may vary.

<b>Studio</b>	<b>A</b>
	Podium

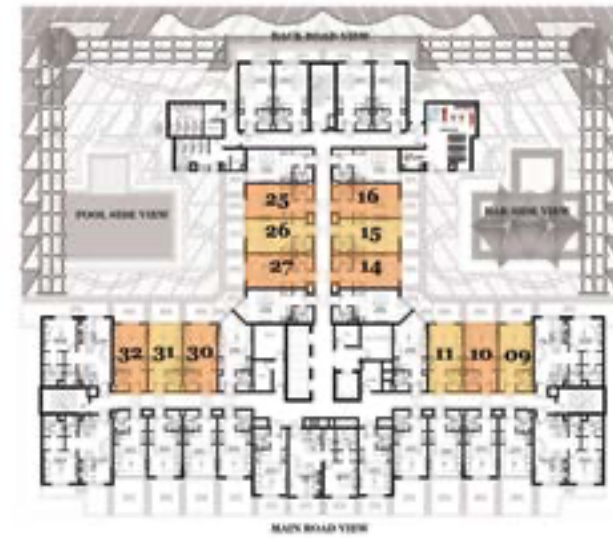


**Unit Nos:** 03, 04, 05, 06, 35, 36, 37, 38  
**Unit Type:** A (Podium Level)  
**Area:** 46.0 sqmt. - 606.33 sqft.

**Type - A.P**

1. All room dimensions are measured to structural elements and exclude wall finishes and construction tolerances / 2. All dimensions have been provided by our consultant architects. / 3. All materials, dimensions & drawing are approximate. Information is subject to change without notice. / 4. Actual suite area may vary from the stated area. Drawings not to scale. The developers reserve the right to make revisions. / 5. Calculation of suite area is measured as the area bounded by the centre line of demising or partition walls separating one unit from another unit, the exterior face of all exterior walls, and the exterior face of the corridor wall enclosing the joining unit. / 6. Calculation of balcony area is measured as the area bounded by the centre line of demising or partition walls separating one unit from another unit, the outmost face of the enclosing guard and the external face of the unit adjoining the balcony. / 7. The units are measured at typical floor in the building. Columns may vary in size depending on the floor level. Interior furnishing, Kitchen appliances and bath fixtures are indicative and large net area of studio may vary.

<b>Studio</b>	<b>B</b>
	Podium



**STUDIO UNIT TYPE B (podium)**

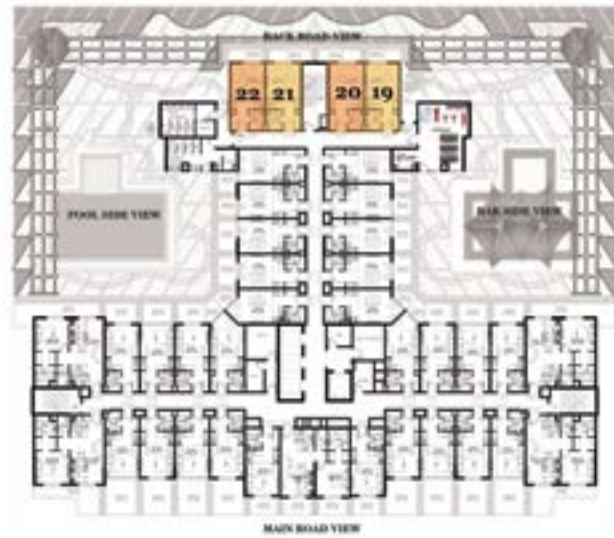


**Unit Nos:** 09, 10, 11, 14, 15, 16, 25, 26, 27, 30, 31, 32  
**Unit Type:** B (Podium Level)  
**Area:** (09), (32) = 39.6 sqmt. - 521.97 sqft.  
(10), (31) = 38.6 sqmt. - 508.79 sqft.  
(14), (27) = 37.70 sqmt. - 496.92 sqft.  
(16), (25) = 34.84 sqmt. - 459.23 sqft.  
(15), (26) = 37.63 sqmt. - 496.00 sqft.  
(11), (30) = 38.24 sqmt. - 504.04 sqft.

**Type - B.P**

1. All room dimensions are measured to structural elements and exclude wall finishes and construction tolerances / 2. All dimensions have been provided by our consultant architects. / 3. All materials, dimensions & drawing are approximate. Information is subject to change without notice. / 4. Actual suite area may vary from the stated area. Drawings not to scale. The developers reserve the right to make revisions. / 5. Calculation of suite area is measured as the area bounded by the centre line of demising or partition walls separating one unit from another unit, the exterior face of all exterior walls, and the exterior face of the corridor wall enclosing the joining unit. / 6. Calculation of balcony area is measured as the area bounded by the centre line of demising or partition walls separating one unit from another unit, the outmost face of the enclosing guard and the external face of the unit adjoining the balcony. / 7. The units are measured at typical floor in the building. Columns may vary in size depending on the floor level. Interior furnishing, Kitchen appliances and bath fixtures are indicative and large net area of studio may vary.

<b>Studio</b>	<b>B</b>
	Podium

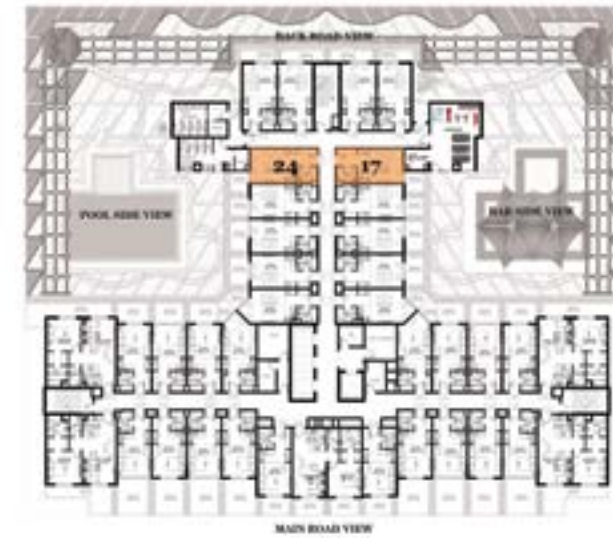


**Unit Nos:** 19, 20, 21, 22  
**Unit Type:** B (Podium Level)  
**Area:** (19), (22) = 36.21 sqmt. - 477.28 sqft.  
 (20), (21) = 38.88 sqmt. - 512.48 sqft.

**Type - B.P**

1. All room dimensions are measured to structural elements and exclude wall finishes and construction tolerances / 2. All dimensions have been provided by our consultant architects. / 3. All materials, dimensions & drawing are approximate. Information is subject to change without notice. / 4. Actual suite area may vary from the stated area. Drawings not to scale. The developers reserve the right to make revisions. / 5. Calculation of suite area is measured as the area bounded by the centre line of demising or partition walls separating one unit from another unit, the exterior face of all exterior walls, and the exterior face of the corridor wall enclosing the joining unit. / 6. Calculation of balcony area is measured as the area bounded by the centre line of demising or partition walls separating one unit from another unit, the outmost face of the enclosing guard and the external face of the unit adjoining the balcony. / 7. The units are measured at typical floor in the building. Columns may vary in size depending on the floor level. Interior furnishing, Kitchen appliances and bath fixtures are indicative and large net area of studio may vary.

<b>Studio</b>	<b>D</b>
	Podium

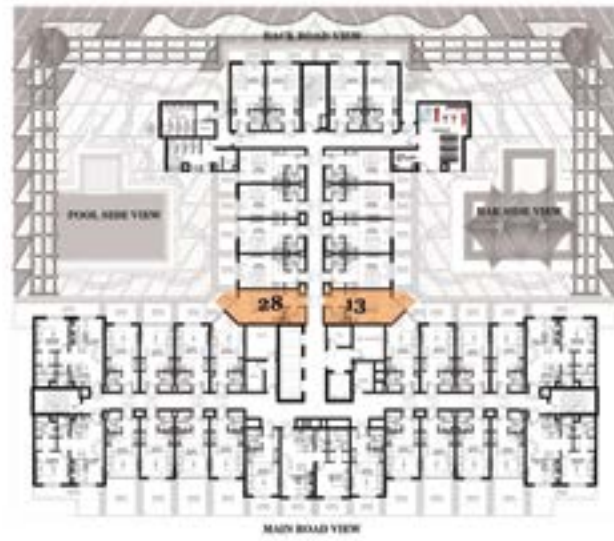


**Unit Nos:** 17, 24  
**Unit Type:** D (Podium Level)  
**Area:** 36.15 sqmt. - 476.49 sqft.

**Type - D.P**

1. All room dimensions are measured to structural elements and exclude wall finishes and construction tolerances / 2. All dimensions have been provided by our consultant architects. / 3. All materials, dimensions & drawing are approximate. Information is subject to change without notice. / 4. Actual suite area may vary from the stated area. Drawings not to scale. The developers reserve the right to make revisions. / 5. Calculation of suite area is measured as the area bounded by the centre line of demising or partition walls separating one unit from another unit, the exterior face of all exterior walls, and the exterior face of the corridor wall enclosing the joining unit. / 6. Calculation of balcony area is measured as the area bounded by the centre line of demising or partition walls separating one unit from another unit, the outmost face of the enclosing guard and the external face of the unit adjoining the balcony. / 7. The units are measured at typical floor in the building. Columns may vary in size depending on the floor level. Interior furnishing, Kitchen appliances and bath fixtures are indicative and large net area of studio may vary.

<b>Studio</b>	<b>E</b>
	Podium

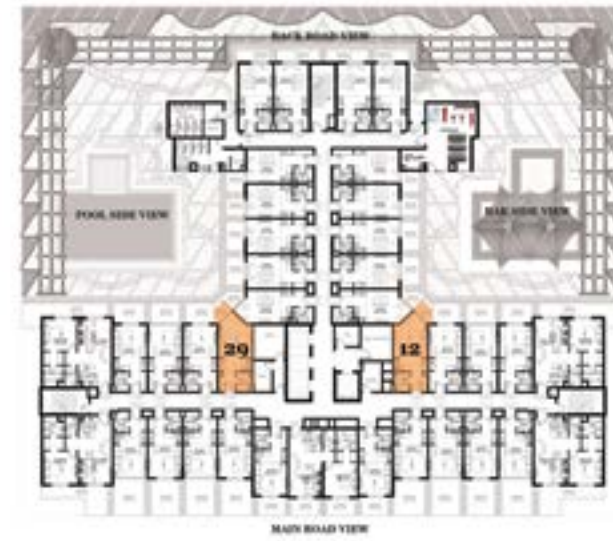


**Unit Nos:** 13, 28  
**Unit Type:** E (Podium Level)  
**Area:** 36.37 sqmt. - 479.39 sqft.

**Type - E.P**

1. All room dimensions are measured to structural elements and exclude wall finishes and construction tolerances / 2. All dimensions have been provided by our consultant architects. / 3. All materials, dimensions & drawing are approximate. Information is subject to change without notice. / 4. Actual suite area may vary from the stated area. Drawings not to scale. The developers reserve the right to make revisions. / 5. Calculation of suite area is measured as the area bounded by the centre line of demising or partition walls separating one unit from another unit, the exterior face of all exterior walls, and the exterior face of the corridor wall enclosing the joining unit. / 6. Calculation of balcony area is measured as the area bounded by the centre line of demising or partition walls separating one unit from another unit, the outmost face of the enclosing guard and the external face of the unit adjoining the balcony. / 7. The units are measured at typical floor in the building. Columns may vary in size depending on the floor level. Interior furnishing, Kitchen appliances and bath fixtures are indicative and large net area of studio may vary.

<b>Studio</b>	<b>F</b>
	Podium



**Unit Nos:** 12, 29  
**Unit Type:** F (Podium Level)  
**Area:** 37.09 sqmt. - 488.88 sqft.

**Type - F.P**

1. All room dimensions are measured to structural elements and exclude wall finishes and construction tolerances / 2. All dimensions have been provided by our consultant architects. / 3. All materials, dimensions & drawing are approximate. Information is subject to change without notice. / 4. Actual suite area may vary from the stated area. Drawings not to scale. The developers reserve the right to make revisions. / 5. Calculation of suite area is measured as the area bounded by the centre line of demising or partition walls separating one unit from another unit, the exterior face of all exterior walls, and the exterior face of the corridor wall enclosing the joining unit. / 6. Calculation of balcony area is measured as the area bounded by the centre line of demising or partition walls separating one unit from another unit, the outmost face of the enclosing guard and the external face of the unit adjoining the balcony. / 7. The units are measured at typical floor in the building. Columns may vary in size depending on the floor level. Interior furnishing, Kitchen appliances and bath fixtures are indicative and large net area of studio may vary.

<b>Studio</b>	<b>G</b>
	Podium



**Unit Nos:** 02, 39  
**Unit Type:** G (Podium Level)  
**Area:** 37.70 sqmt. - 496.92 sqft.

**Type - G.P**

1. All room dimensions are measured to structural elements and exclude wall finishes and construction tolerances / 2. All dimensions have been provided by our consultant architects. / 3. All materials, dimensions & drawing are approximate. Information is subject to change without notice. / 4. Actual suite area may vary from the stated area. Drawings not to scale. The developers reserve the right to make revisions. / 5. Calculation of suite area is measured as the area bounded by the centre line of demising or partition walls separating one unit from another unit, the exterior face of all exterior walls, and the exterior face of the corridor wall enclosing the joining unit. / 6. Calculation of balcony area is measured as the area bounded by the centre line of demising or partition walls separating one unit from another unit, the outmost face of the enclosing guard and the external face of the unit adjoining the balcony. / 7. The units are measured at typical floor in the building. Columns may vary in size depending on the floor level. Interior furnishing, Kitchen appliances and bath fixtures are indicative and large net area of studio may vary.

<b>Studio</b>	<b>A</b>
	Typical



**Unit Nos:** 03, 04, 05, 06, 09, 10, 15, 16  
 25, 26, 31, 32, 35, 36, 37, 38  
**Unit Type:** A  
**Area:** 36.98 sqmt. - 487.43 sqft.

**Type - A.T**

1. All room dimensions are measured to structural elements and exclude wall finishes and construction tolerances / 2. All dimensions have been provided by our consultant architects. / 3. All materials, dimensions & drawing are approximate. Information is subject to change without notice. / 4. Actual suite area may vary from the stated area. Drawings not to scale. The developers reserve the right to make revisions. / 5. Calculation of suite area is measured as the area bounded by the centre line of demising or partition walls separating one unit from another unit, the exterior face of all exterior walls, and the exterior face of the corridor wall enclosing the joining unit. / 6. Calculation of balcony area is measured as the area bounded by the centre line of demising or partition walls separating one unit from another unit, the outmost face of the enclosing guard and the external face of the unit adjoining the balcony. / 7. The units are measured at typical floor in the building. Columns may vary in size depending on the floor level. Interior furnishing, Kitchen appliances and bath fixtures are indicative and large net area of studio may vary.

<b>Studio</b>	<b>B</b>
	Typical



**Unit Nos:** 11, 14, 27, 30  
**Unit Type:** B  
**Area:** 30.86 sqmt. - 406.77 sqft.

**Type - B.T**

1. All room dimensions are measured to structural elements and exclude wall finishes and construction tolerances / 2. All dimensions have been provided by our consultant architects. / 3. All materials, dimensions & drawing are approximate. Information is subject to change without notice. / 4. Actual suite area may vary from the stated area. Drawings not to scale. The developers reserve the right to make revisions. / 5. Calculation of suite area is measured as the area bounded by the centre line of demising or partition walls separating one unit from another unit, the exterior face of all exterior walls, and the exterior face of the corridor wall enclosing the joining unit. / 6. Calculation of balcony area is measured as the area bounded by the centre line of demising or partition walls separating one unit from another unit, the outmost face of the enclosing guard and the external face of the unit adjoining the balcony. / 7. The units are measured at typical floor in the building. Columns may vary in size depending on the floor level. Interior furnishing, Kitchen appliances and bath fixtures are indicative and large net area of studio may vary.

<b>Studio</b>	<b>C</b>
	Typical

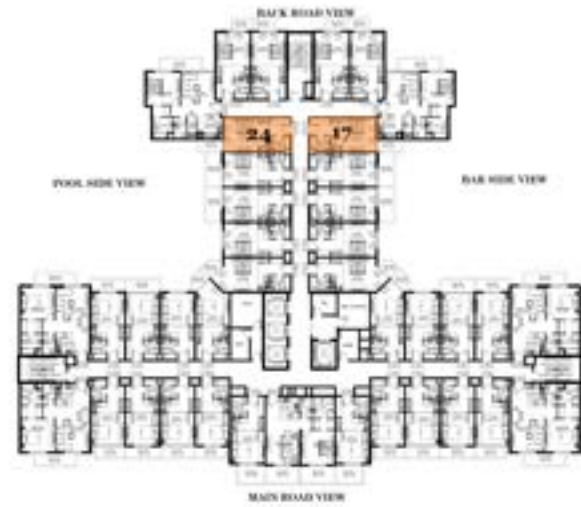


**Unit Nos:** 19, 20, 21, 22  
**Unit Type:** C  
**Area:** 35.18 sqmt. - 463.71 sqft.

**Type - C.T**

1. All room dimensions are measured to structural elements and exclude wall finishes and construction tolerances / 2. All dimensions have been provided by our consultant architects. / 3. All materials, dimensions & drawing are approximate. Information is subject to change without notice. / 4. Actual suite area may vary from the stated area. Drawings not to scale. The developers reserve the right to make revisions. / 5. Calculation of suite area is measured as the area bounded by the centre line of demising or partition walls separating one unit from another unit, the exterior face of all exterior walls, and the exterior face of the corridor wall enclosing the joining unit. / 6. Calculation of balcony area is measured as the area bounded by the centre line of demising or partition walls separating one unit from another unit, the outmost face of the enclosing guard and the external face of the unit adjoining the balcony. / 7. The units are measured at typical floor in the building. Columns may vary in size depending on the floor level. Interior furnishing, Kitchen appliances and bath fixtures are indicative and large net area of studio may vary.

<b>Studio</b>	<b>D</b>
	Typical



**Unit Nos:** 17, 24  
**Unit Type:** D  
**Area:** 34.92 sqmt. - 460.28 sqft.

**Type - D.T**

1. All room dimensions are measured to structural elements and exclude wall finishes and construction tolerances / 2. All dimensions have been provided by our consultant architects. / 3. All materials, dimensions & drawing are approximate. Information is subject to change without notice. / 4. Actual suite area may vary from the stated area. Drawings not to scale. The developers reserve the right to make revisions. / 5. Calculation of suite area is measured as the area bounded by the centre line of demising or partition walls separating one unit from another unit, the exterior face of all exterior walls, and the exterior face of the corridor wall enclosing the joining unit. / 6. Calculation of balcony area is measured as the area bounded by the centre line of demising or partition walls separating one unit from another unit, the outmost face of the enclosing guard and the external face of the unit adjoining the balcony. / 7. The units are measured at typical floor in the building. Columns may vary in size depending on the floor level. Interior furnishing, Kitchen appliances and bath fixtures are indicative and large net area of studio may vary.

<b>Studio</b>	<b>E</b>
	Typical



**Unit Nos:** 13, 28  
**Unit Type:** E  
**Area:** 35.81 sqmt. - 472.01 sqft.

**Type - E.T**

1. All room dimensions are measured to structural elements and exclude wall finishes and construction tolerances / 2. All dimensions have been provided by our consultant architects. / 3. All materials, dimensions & drawing are approximate. Information is subject to change without notice. / 4. Actual suite area may vary from the stated area. Drawings not to scale. The developers reserve the right to make revisions. / 5. Calculation of suite area is measured as the area bounded by the centre line of demising or partition walls separating one unit from another unit, the exterior face of all exterior walls, and the exterior face of the corridor wall enclosing the joining unit. / 6. Calculation of balcony area is measured as the area bounded by the centre line of demising or partition walls separating one unit from another unit, the outmost face of the enclosing guard and the external face of the unit adjoining the balcony. / 7. The units are measured at typical floor in the building. Columns may vary in size depending on the floor level. Interior furnishing, Kitchen appliances and bath fixtures are indicative and large net area of studio may vary.

<b>Studio</b>	<b>F</b>
	Typical



**Unit Nos:** 12, 29  
**Unit Type:** F  
**Area:** 36.26 sqmt. - 477.94 sqft.

**Type - F.T**

1. All room dimensions are measured to structural elements and exclude wall finishes and construction tolerances / 2. All dimensions have been provided by our consultant architects. / 3. All materials, dimensions & drawing are approximate. Information is subject to change without notice. / 4. Actual suite area may vary from the stated area. Drawings not to scale. The developers reserve the right to make revisions. / 5. Calculation of suite area is measured as the area bounded by the centre line of demising or partition walls separating one unit from another unit, the exterior face of all exterior walls, and the exterior face of the corridor wall enclosing the joining unit. / 6. Calculation of balcony area is measured as the area bounded by the centre line of demising or partition walls separating one unit from another unit, the outmost face of the enclosing guard and the external face of the unit adjoining the balcony. / 7. The units are measured at typical floor in the building. Columns may vary in size depending on the floor level. Interior furnishing, Kitchen appliances and bath fixtures are indicative and large net area of studio may vary.

<b>Studio</b>	<b>G</b>
	Typical



**Unit Nos:** 02, 39  
**Unit Type:** G  
**Area:** 37.77 sqmt. - 497.85 sqft.

**Type - G.T**

1. All room dimensions are measured to structural elements and exclude wall finishes and construction tolerances / 2. All dimensions have been provided by our consultant architects. / 3. All materials, dimensions & drawing are approximate. Information is subject to change without notice. / 4. Actual suite area may vary from the stated area. Drawings not to scale. The developers reserve the right to make revisions. / 5. Calculation of suite area is measured as the area bounded by the centre line of demising or partition walls separating one unit from another unit, the exterior face of all exterior walls, and the exterior face of the corridor wall enclosing the joining unit. / 6. Calculation of balcony area is measured as the area bounded by the centre line of demising or partition walls separating one unit from another unit, the outmost face of the enclosing guard and the external face of the unit adjoining the balcony. / 7. The units are measured at typical floor in the building. Columns may vary in size depending on the floor level. Interior furnishing, Kitchen appliances and bath fixtures are indicative and large net area of studio may vary.