

A high-end architectural rendering of a modern multi-story residential building named Hamilton House. The building features a mix of white and dark grey facades, large glass windows, and balconies with black metal railings and potted plants. In the foreground, a large, rectangular swimming pool with blue water is visible, featuring a decorative water fountain on the left side. A yellow swan-shaped inflatable ring floats in the pool. To the left of the pool, there are three wooden cabana-style lounge areas with white cushions. The pool area is surrounded by lush landscaping, including several tall palm trees and various shrubs. In the background, a city skyline with various skyscrapers is visible under a clear blue sky with some light clouds. The overall scene conveys a sense of luxury and modern urban living.

H

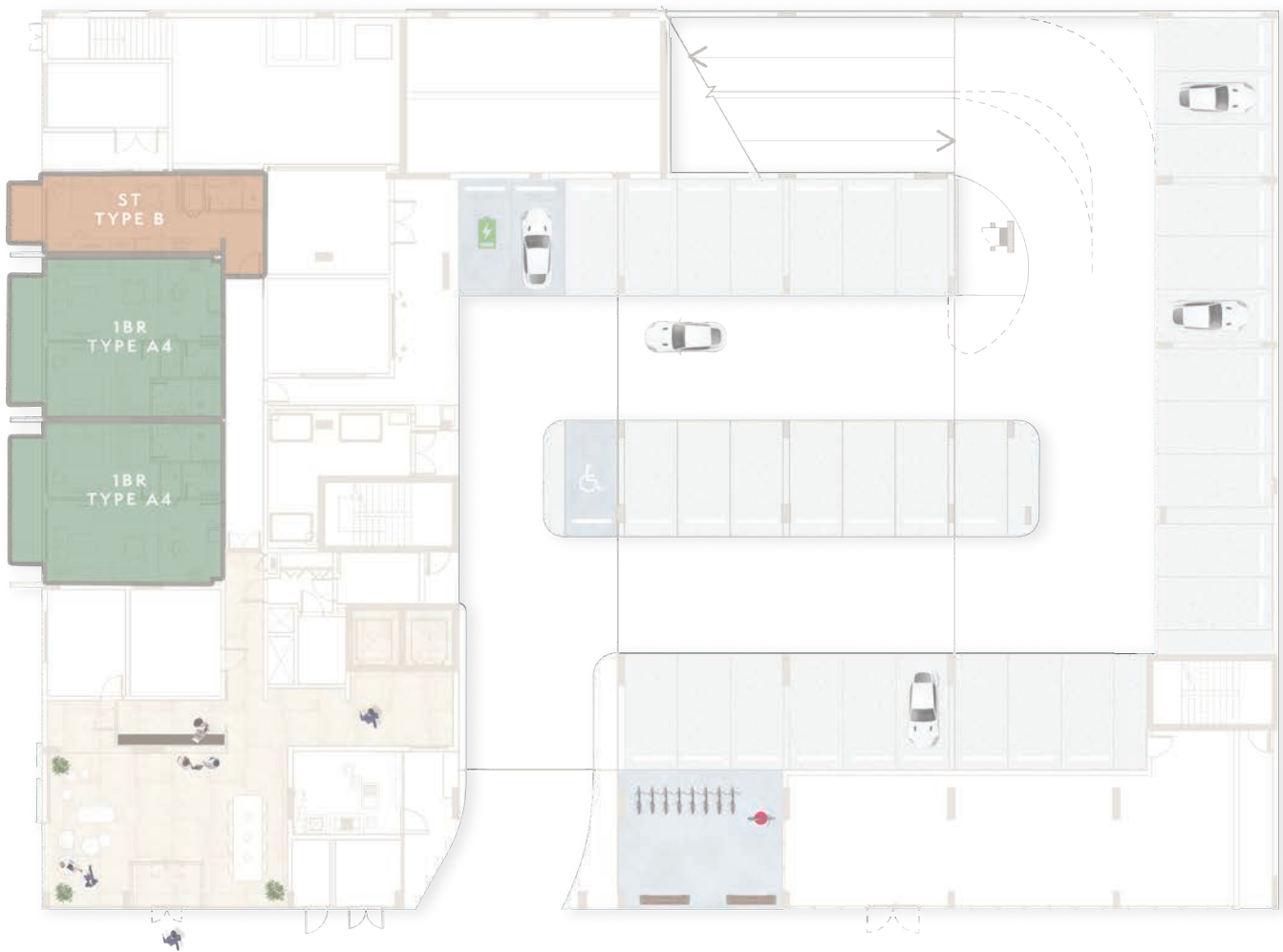
HAMILTON  
HOUSE

FLOOR PLANS



# TYPICAL PLAN

## GROUND FLOOR



GROUND FLOOR TYPICAL PLAN



STUDIOS



1 BEDROOM APARTMENTS



2 BEDROOM APARTMENTS

# TYPICAL PLAN

## FIRST FLOOR



1<sup>ST</sup> FLOOR TYPICAL PLAN



STUDIOS



1 BEDROOM APARTMENTS



2 BEDROOM APARTMENTS

# TYPICAL PLAN

## 2<sup>ND</sup> - 5<sup>TH</sup> FLOOR



2<sup>ND</sup> - 5<sup>TH</sup> FLOOR TYPICAL PLAN



STUDIOS

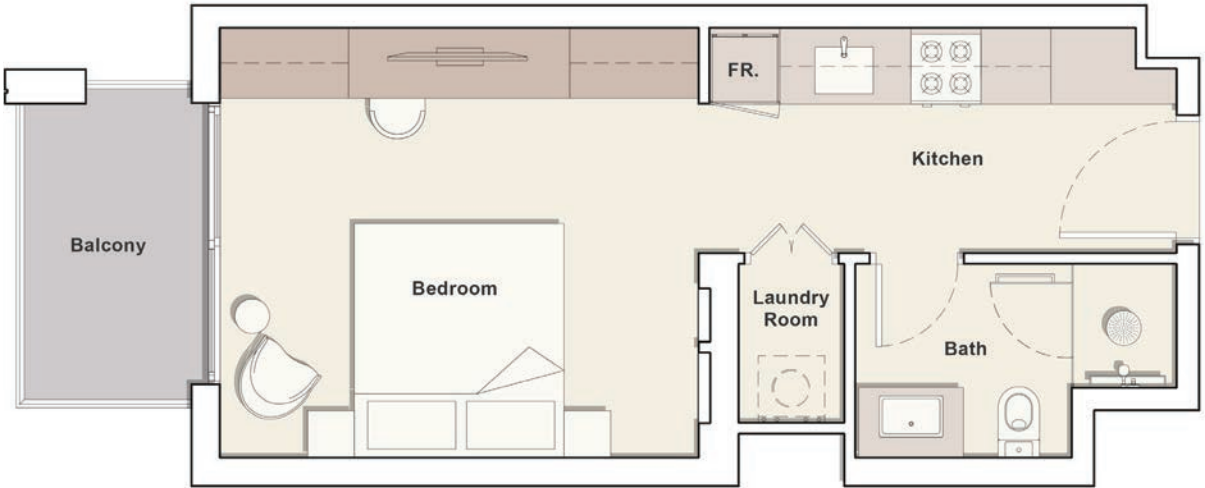


1 BEDROOM APARTMENTS

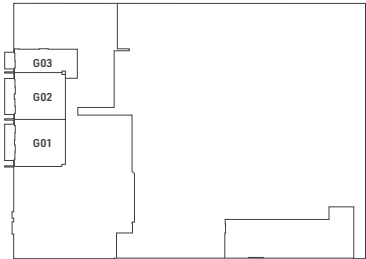


2 BEDROOM APARTMENTS

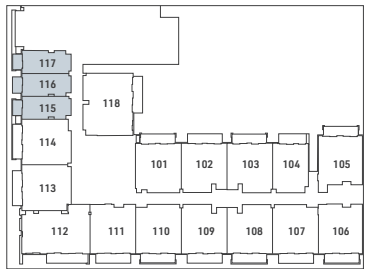
# STUDIO TYPE A



Ground Floor



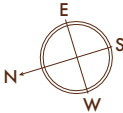
1<sup>st</sup> Floor



2<sup>nd</sup> to 5<sup>th</sup> Floor

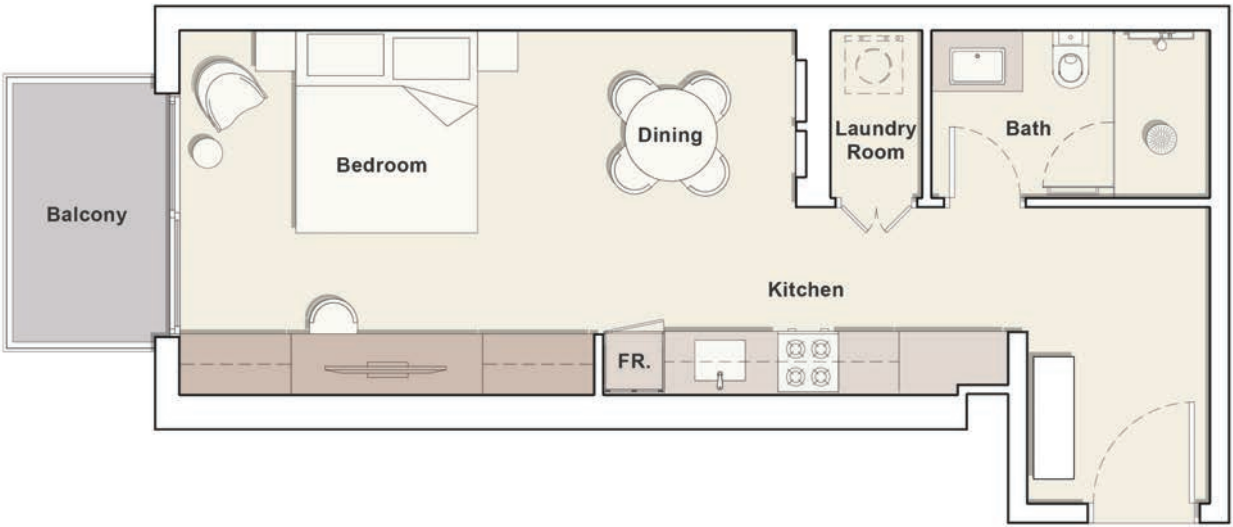


All drawings and dimensions are approximate. Drawings are not to scale and are subject to change without notice. The developer reserves the right to make revisions. The units are measured at typical floor in the building and columns may vary in size depending on the floor level. The furnishings and accessories shown are for representation only. The length and width of the Unit and balcony varies depending on which floor and which orientation the unit is located within the building to comply with the building authority regulations. Apartment unit sizes may vary. Actual unit sizes will be reflected on the Sales and Purchase Agreement.

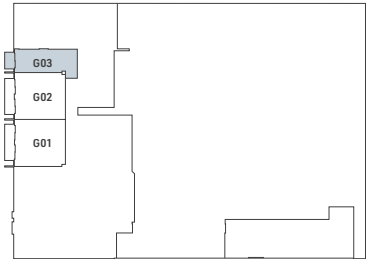


Internal Living Area	339.92 sq.ft.
Outdoor Living Area	47.68 sq.ft.
Total Living Area	387.61 sq.ft.

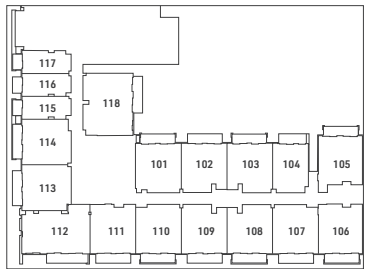
# STUDIO TYPE B



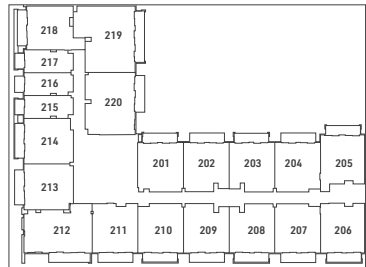
Ground Floor



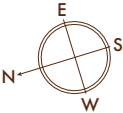
1<sup>st</sup> Floor



2<sup>nd</sup> to 5<sup>th</sup> Floor



All drawings and dimensions are approximate. Drawings are not to scale and are subject to change without notice. The developer reserves the right to make revisions. The units are measured at typical floor in the building and columns may vary in size depending on the floor level. The furnishings and accessories shown are for representation only. The length and width of the Unit and balcony varies depending on which floor and which orientation the unit is located within the building to comply with the building authority regulations. Apartment unit sizes may vary. Actual unit sizes will be reflected on the Sales and Purchase Agreement.

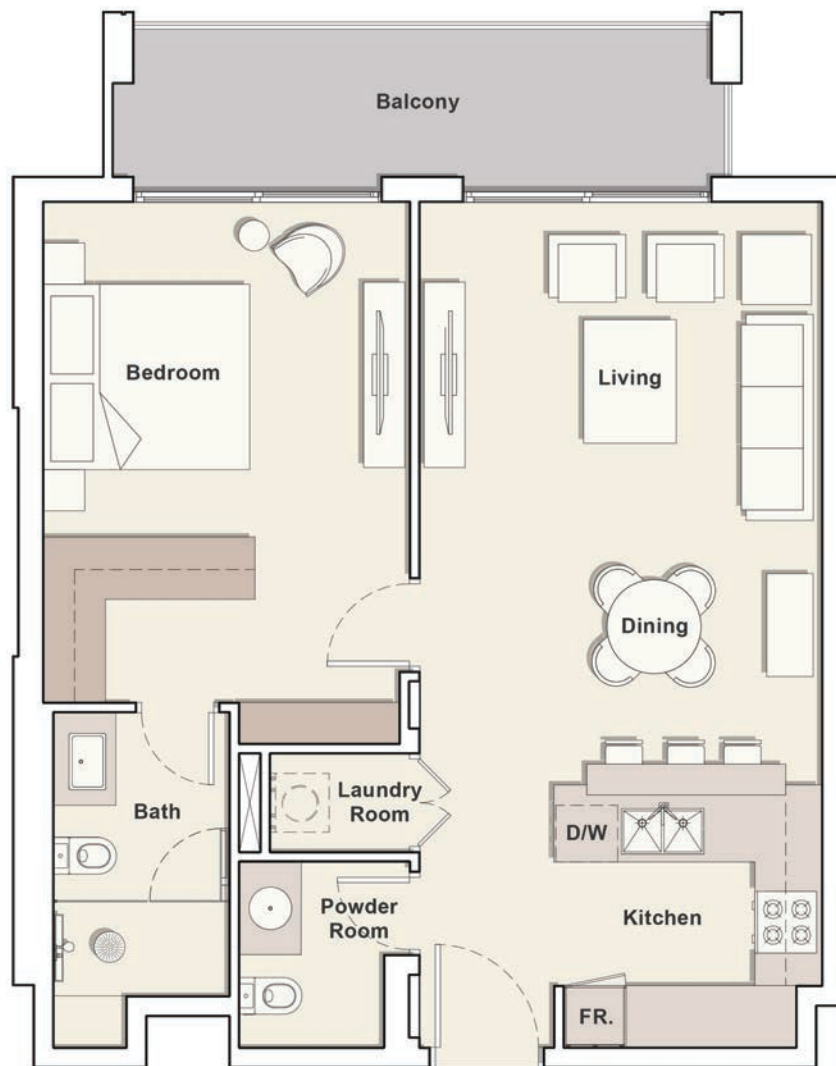


Internal Living Area	456.50 sq.ft.
Outdoor Living Area	47.90 sq.ft.
Total Living Area	504.40 sq.ft.

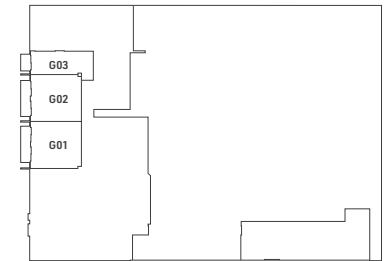


HAMILTON  
HOUSE

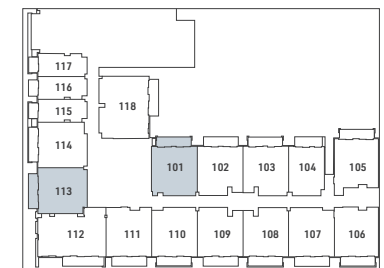
# 1 BEDROOM TYPE A1



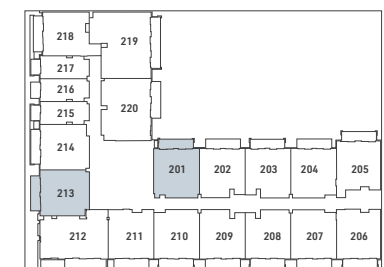
Ground Floor



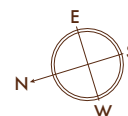
1<sup>st</sup> Floor



2<sup>nd</sup> to 5<sup>th</sup> Floor



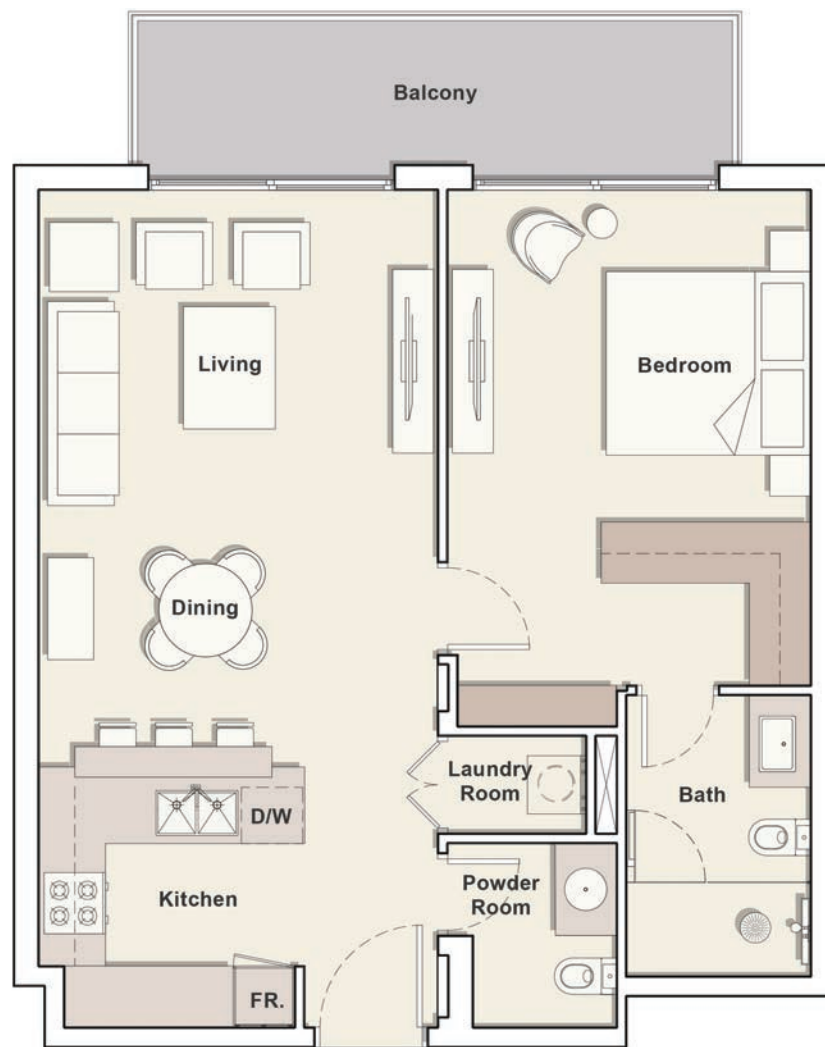
All drawings and dimensions are approximate. Drawings are not to scale and are subject to change without notice. The developer reserves the right to make revisions. The units are measured at typical floor in the building and columns may vary in size depending on the floor level. The furnishings and accessories shown are for representation only. The length and width of the Unit and balcony varies depending on which floor and which orientation the unit is located within the building to comply with the building authority regulations. Apartment unit sizes may vary. Actual unit sizes will be reflected on the Sales and Purchase Agreement.



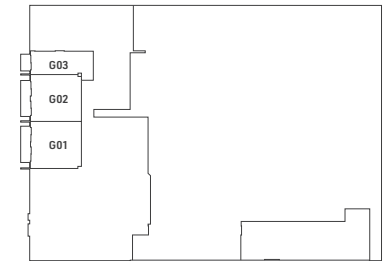
Internal Living Area	693.73 sq.ft.
Outdoor Living Area	104.95 sq.ft.
Total Living Area	798.68 sq.ft.

# 1 BEDROOM TYPE A2

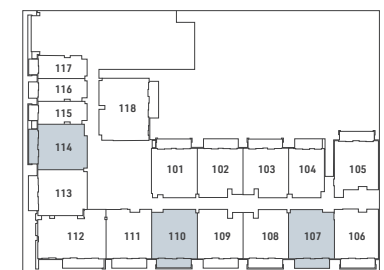
H  
HAMILTON  
HOUSE



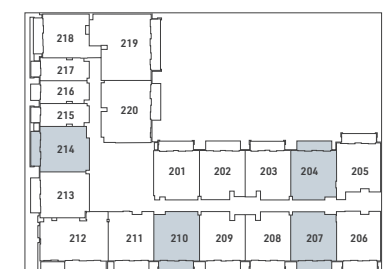
Ground Floor



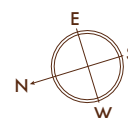
1<sup>st</sup> Floor



2<sup>nd</sup> to 5<sup>th</sup> Floor



All drawings and dimensions are approximate. Drawings are not to scale and are subject to change without notice. The developer reserves the right to make revisions. The units are measured at typical floor in the building and columns may vary in size depending on the floor level. The furnishings and accessories shown are for representation only. The length and width of the Unit and balcony varies depending on which floor and which orientation the unit is located within the building to comply with the building authority regulations. Apartment unit sizes may vary. Actual unit sizes will be reflected on the Sales and Purchase Agreement.



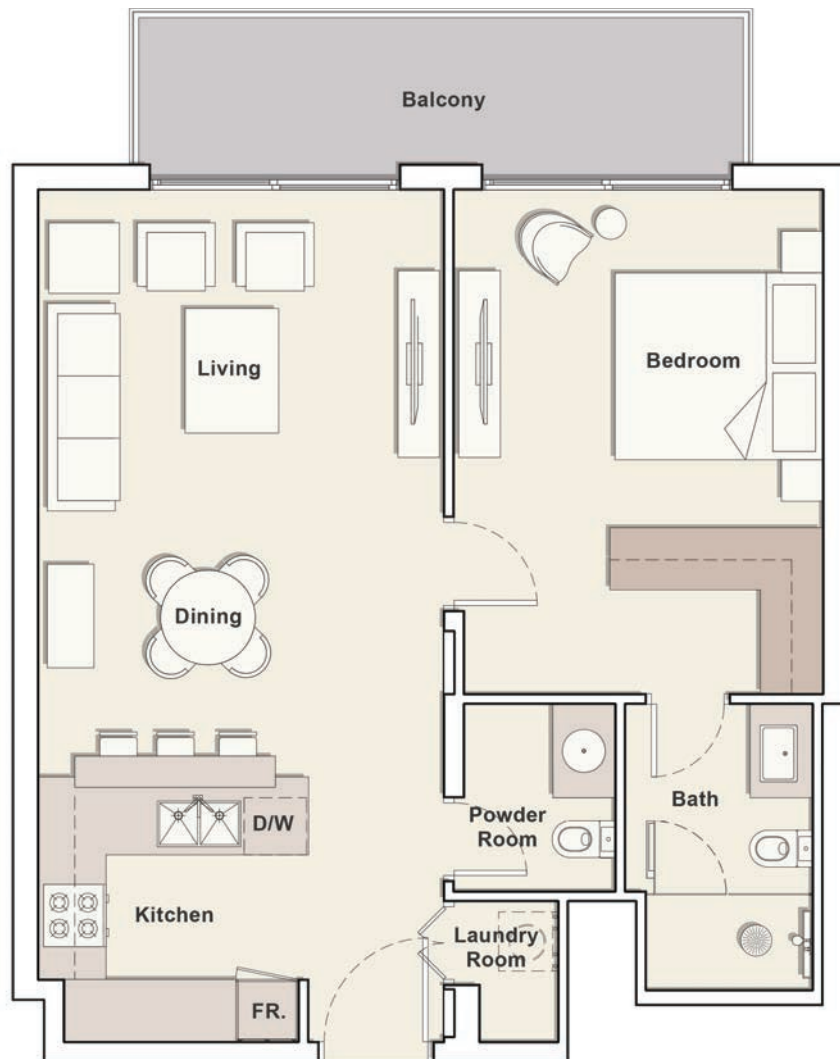
Internal Living Area	687.06 sq.ft.
Outdoor Living Area	105.38 sq.ft.
Total Living Area	792.44 sq.ft.



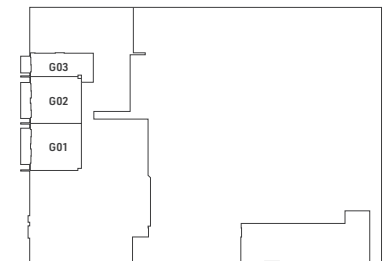


HAMILTON  
HOUSE

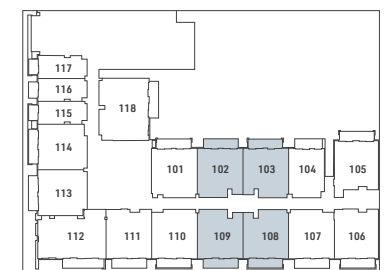
# 1 BEDROOM TYPE A3



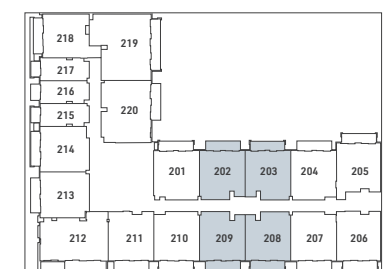
Ground Floor



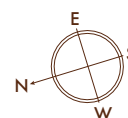
1<sup>st</sup> Floor



2<sup>nd</sup> to 5<sup>th</sup> Floor



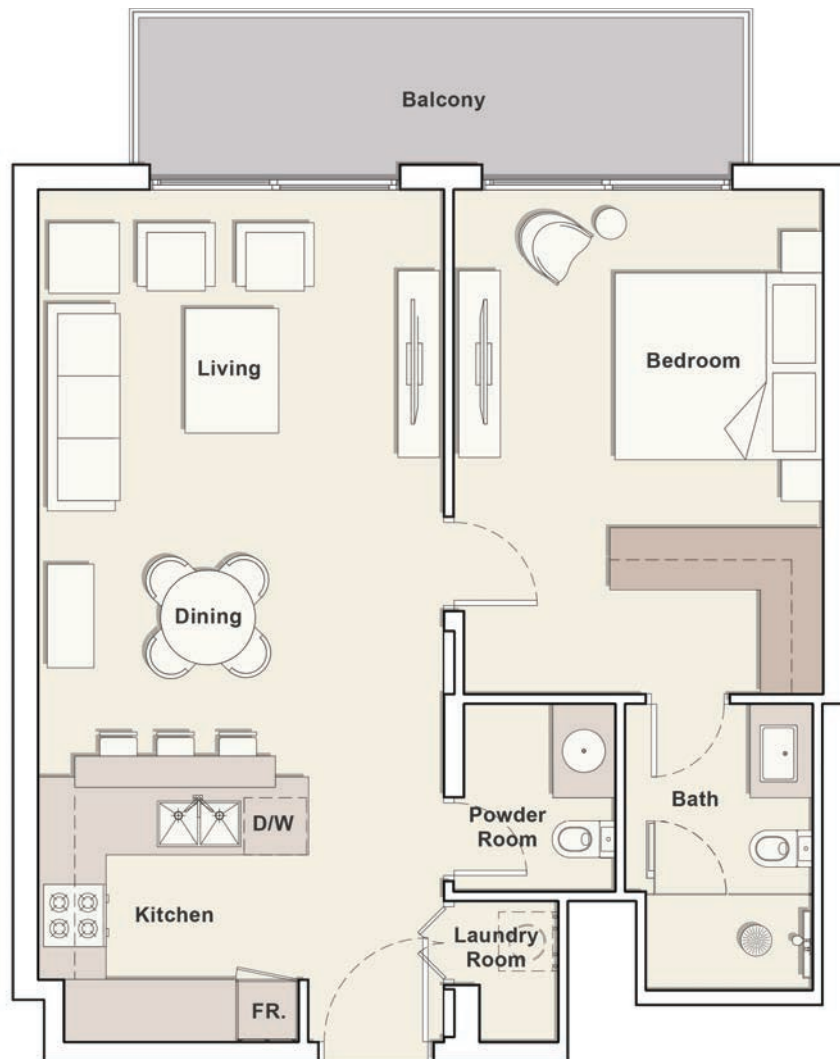
All drawings and dimensions are approximate. Drawings are not to scale and are subject to change without notice. The developer reserves the right to make revisions. The units are measured at typical floor in the building and columns may vary in size depending on the floor level. The furnishings and accessories shown are for representation only. The length and width of the Unit and balcony varies depending on which floor and which orientation the unit is located within the building to comply with the building authority regulations. Apartment unit sizes may vary. Actual unit sizes will be reflected on the Sales and Purchase Agreement.



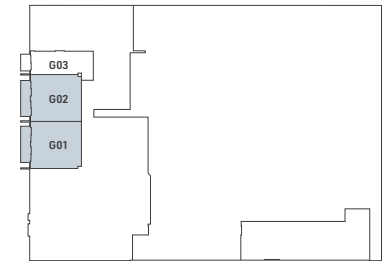
Internal Living Area	678.88 sq.ft.
Outdoor Living Area	105.38 sq.ft.
Total Living Area	784.26 sq.ft.

# 1 BEDROOM TYPE A4

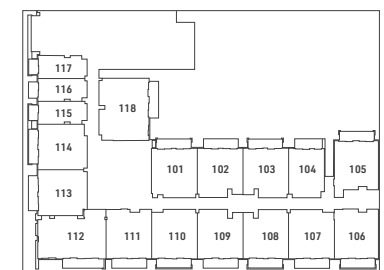
H  
HAMILTON  
HOUSE



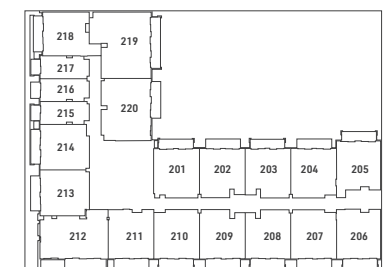
Ground Floor



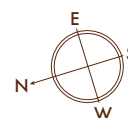
1<sup>st</sup> Floor



2<sup>nd</sup> to 5<sup>th</sup> Floor



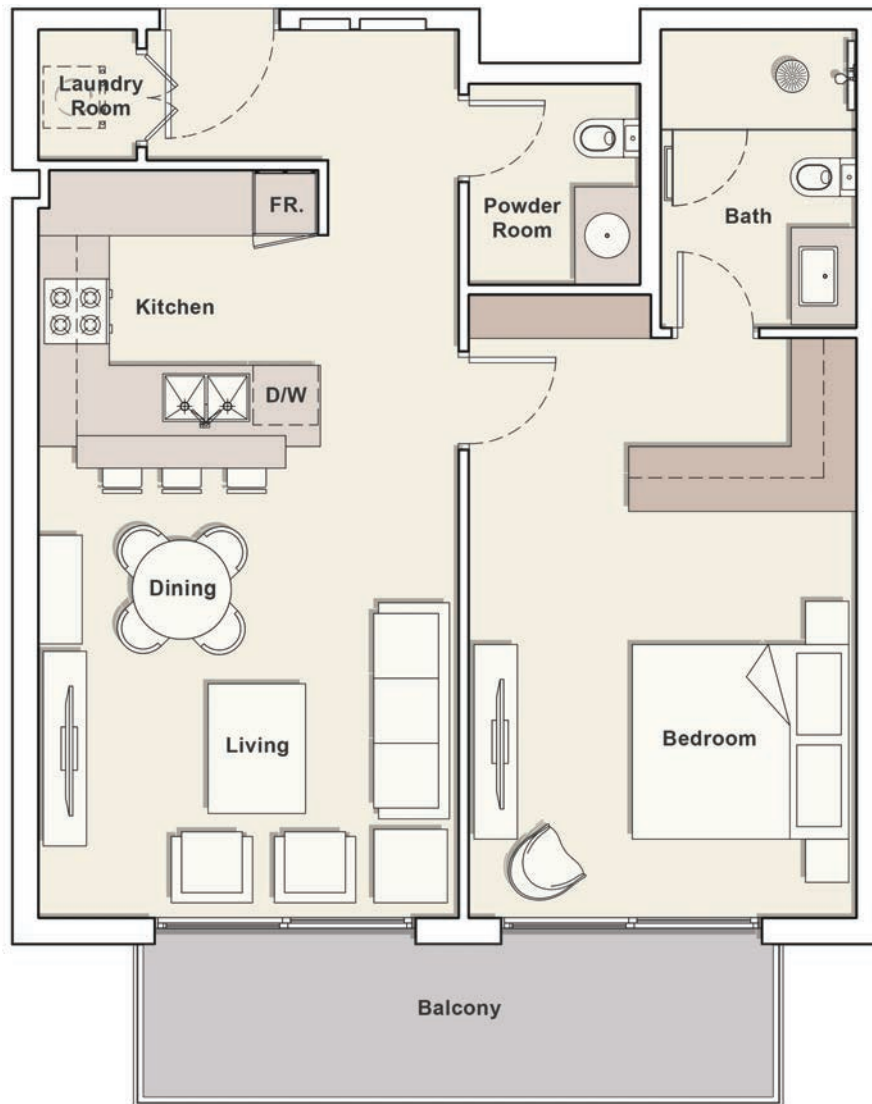
All drawings and dimensions are approximate. Drawings are not to scale and are subject to change without notice. The developer reserves the right to make revisions. The units are measured at typical floor in the building and columns may vary in size depending on the floor level. The furnishings and accessories shown are for representation only. The length and width of the Unit and balcony varies depending on which floor and which orientation the unit is located within the building to comply with the building authority regulations. Apartment unit sizes may vary. Actual unit sizes will be reflected on the Sales and Purchase Agreement.



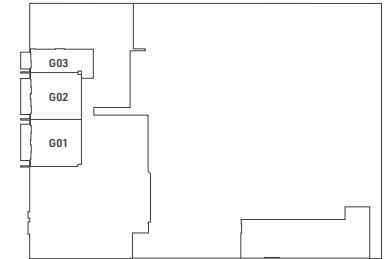
Internal Living Area	701.59 sq.ft.
Outdoor Living Area	99.35 sq.ft.
Total Living Area	800.94 sq.ft.

# 1 BEDROOM TYPE B

H  
HAMILTON  
HOUSE



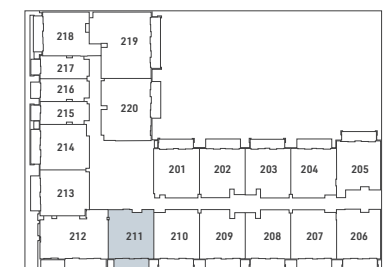
Ground Floor



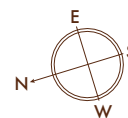
1<sup>st</sup> Floor



2<sup>nd</sup> to 5<sup>th</sup> Floor



All drawings and dimensions are approximate. Drawings are not to scale and are subject to change without notice. The developer reserves the right to make revisions. The units are measured at typical floor in the building and columns may vary in size depending on the floor level. The furnishings and accessories shown are for representation only. The length and width of the Unit and balcony varies depending on which floor and which orientation the unit is located within the building to comply with the building authority regulations. Apartment unit sizes may vary. Actual unit sizes will be reflected on the Sales and Purchase Agreement.

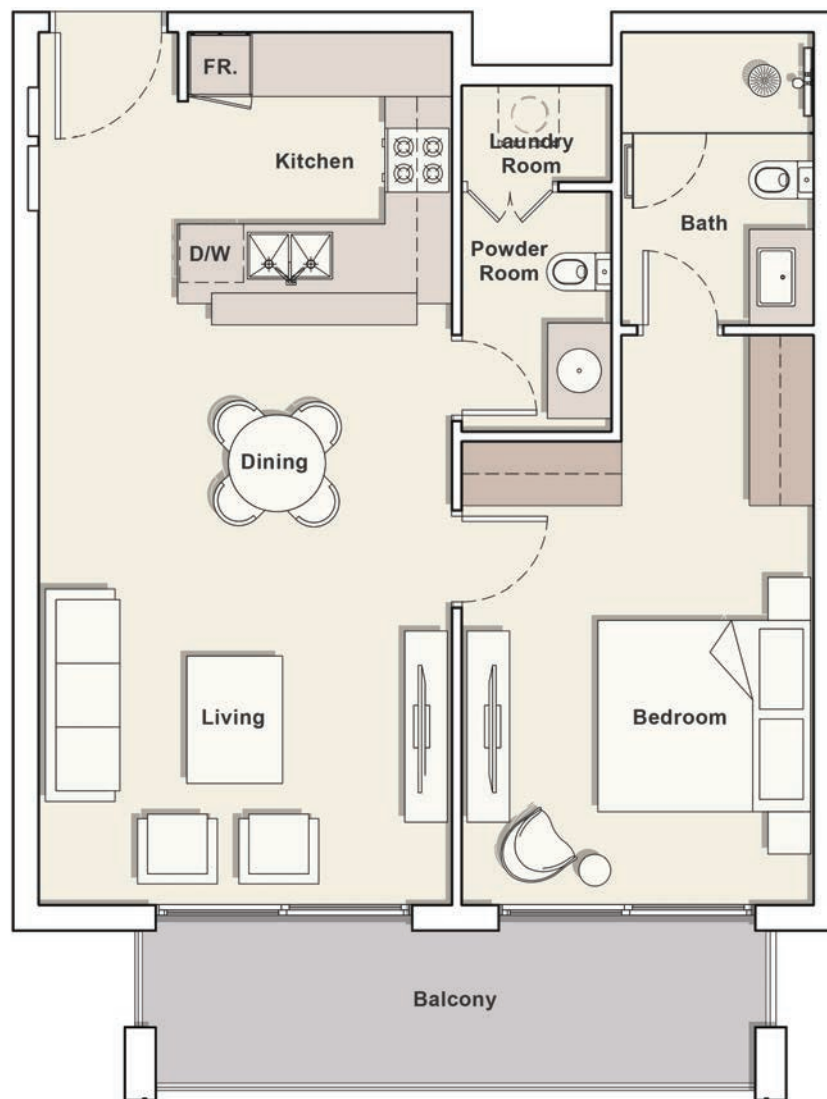


Internal Living Area	694.38 sq.ft.
Outdoor Living Area	105.38 sq.ft.
Total Living Area	799.76 sq.ft.

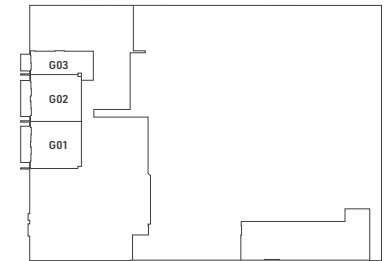


# 1 BEDROOM TYPE C1

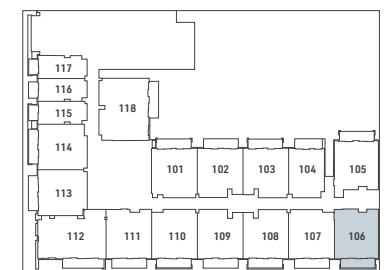
H  
HAMILTON  
HOUSE



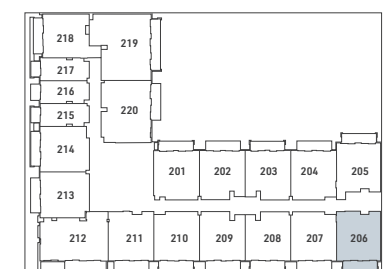
Ground Floor



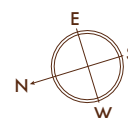
1<sup>st</sup> Floor



2<sup>nd</sup> to 5<sup>th</sup> Floor



All drawings and dimensions are approximate. Drawings are not to scale and are subject to change without notice. The developer reserves the right to make revisions. The units are measured at typical floor in the building and columns may vary in size depending on the floor level. The furnishings and accessories shown are for representation only. The length and width of the Unit and balcony varies depending on which floor and which orientation the unit is located within the building to comply with the building authority regulations. Apartment unit sizes may vary. Actual unit sizes will be reflected on the Sales and Purchase Agreement.



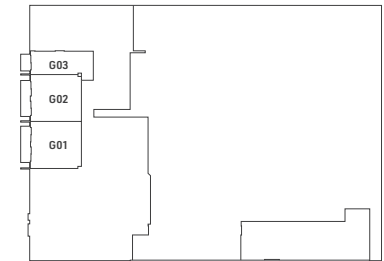
Internal Living Area	673.82 sq.ft.
Outdoor Living Area	103.87 sq.ft.
Total Living Area	777.69 sq.ft.

# 1 BEDROOM TYPE C2

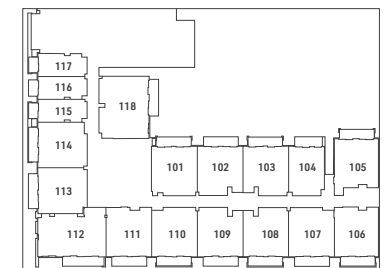
H  
HAMILTON  
HOUSE



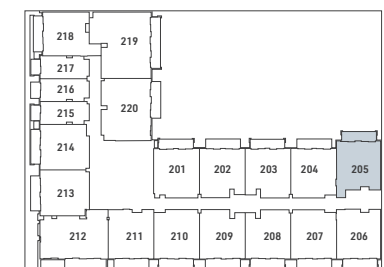
Ground Floor



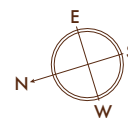
1<sup>st</sup> Floor



2<sup>nd</sup> to 5<sup>th</sup> Floor

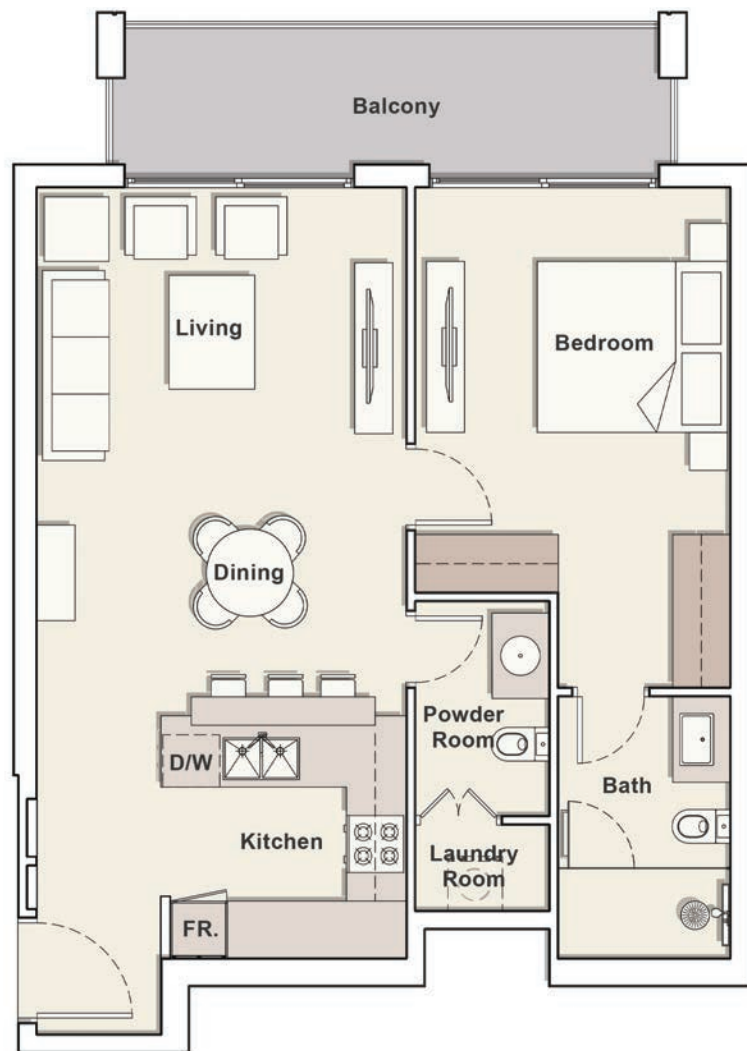


All drawings and dimensions are approximate. Drawings are not to scale and are subject to change without notice. The developer reserves the right to make revisions. The units are measured at typical floor in the building and columns may vary in size depending on the floor level. The furnishings and accessories shown are for representation only. The length and width of the Unit and balcony varies depending on which floor and which orientation the unit is located within the building to comply with the building authority regulations. Apartment unit sizes may vary. Actual unit sizes will be reflected on the Sales and Purchase Agreement.

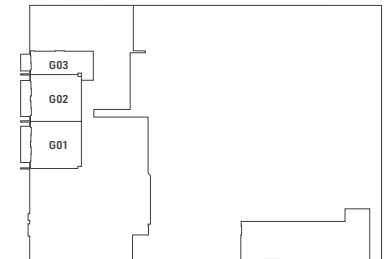


Internal Living Area	689.43 sq.ft.
Outdoor Living Area	104.09 sq.ft.
Total Living Area	793.52 sq.ft.

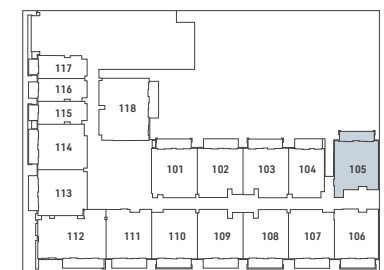
# 1 BEDROOM TYPE C3



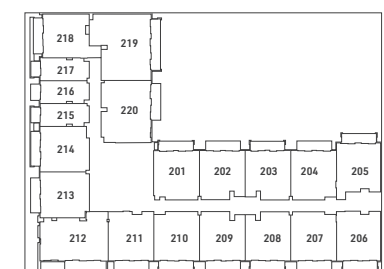
Ground Floor



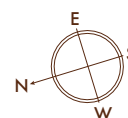
1<sup>st</sup> Floor



2<sup>nd</sup> to 5<sup>th</sup> Floor



All drawings and dimensions are approximate. Drawings are not to scale and are subject to change without notice. The developer reserves the right to make revisions. The units are measured at typical floor in the building and columns may vary in size depending on the floor level. The furnishings and accessories shown are for representation only. The length and width of the Unit and balcony varies depending on which floor and which orientation the unit is located within the building to comply with the building authority regulations. Apartment unit sizes may vary. Actual unit sizes will be reflected on the Sales and Purchase Agreement.

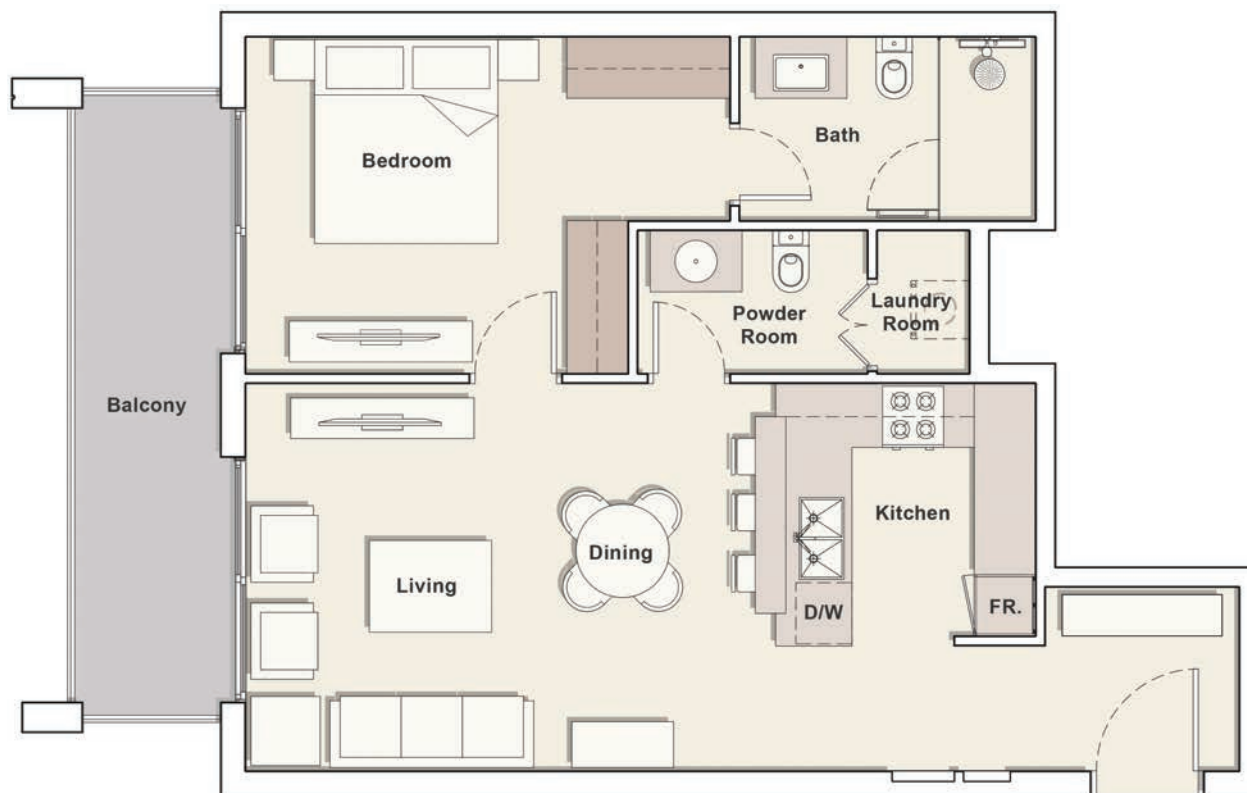


Internal Living Area	678.45 sq.ft.
Outdoor Living Area	103.87 sq.ft.
Total Living Area	782.32 sq.ft.

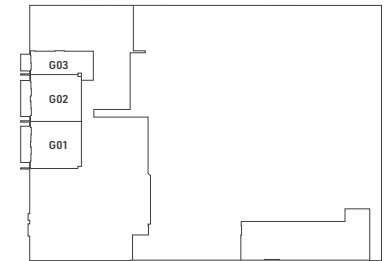


# 1 BEDROOM TYPE C4

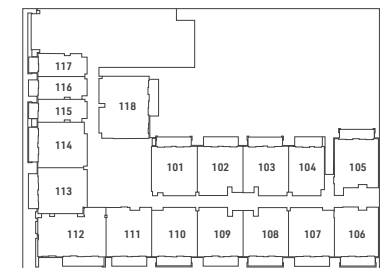
H  
HAMILTON  
HOUSE



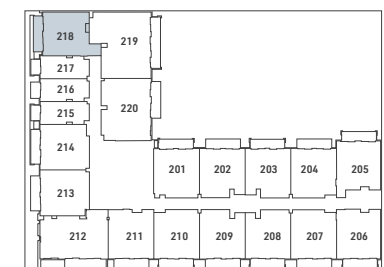
Ground Floor



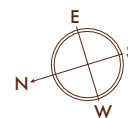
1<sup>st</sup> Floor



2<sup>nd</sup> to 5<sup>th</sup> Floor



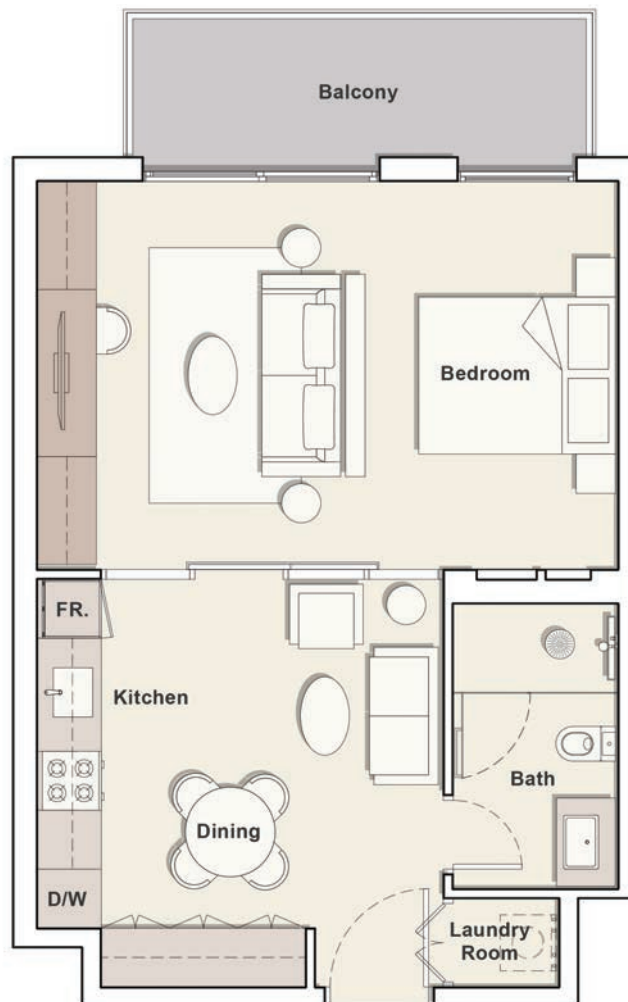
All drawings and dimensions are approximate. Drawings are not to scale and are subject to change without notice. The developer reserves the right to make revisions. The units are measured at typical floor in the building and columns may vary in size depending on the floor level. The furnishings and accessories shown are for representation only. The length and width of the Unit and balcony varies depending on which floor and which orientation the unit is located within the building to comply with the building authority regulations. Apartment unit sizes may vary. Actual unit sizes will be reflected on the Sales and Purchase Agreement.



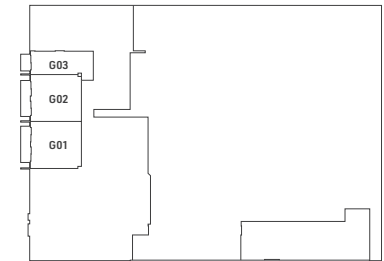
Internal Living Area	669.73 sq.ft.
Outdoor Living Area	107.75 sq.ft.
Total Living Area	777.48 sq.ft.

# 1 BEDROOM TYPE D

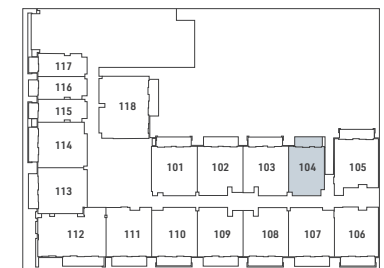
H  
HAMILTON  
HOUSE



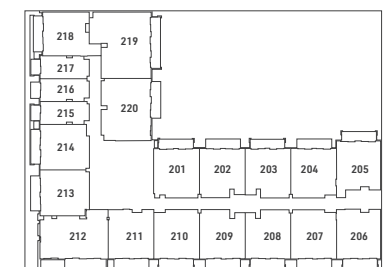
Ground Floor



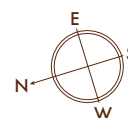
1<sup>st</sup> Floor



2<sup>nd</sup> to 5<sup>th</sup> Floor



All drawings and dimensions are approximate. Drawings are not to scale and are subject to change without notice. The developer reserves the right to make revisions. The units are measured at typical floor in the building and columns may vary in size depending on the floor level. The furnishings and accessories shown are for representation only. The length and width of the Unit and balcony varies depending on which floor and which orientation the unit is located within the building to comply with the building authority regulations. Apartment unit sizes may vary. Actual unit sizes will be reflected on the Sales and Purchase Agreement.

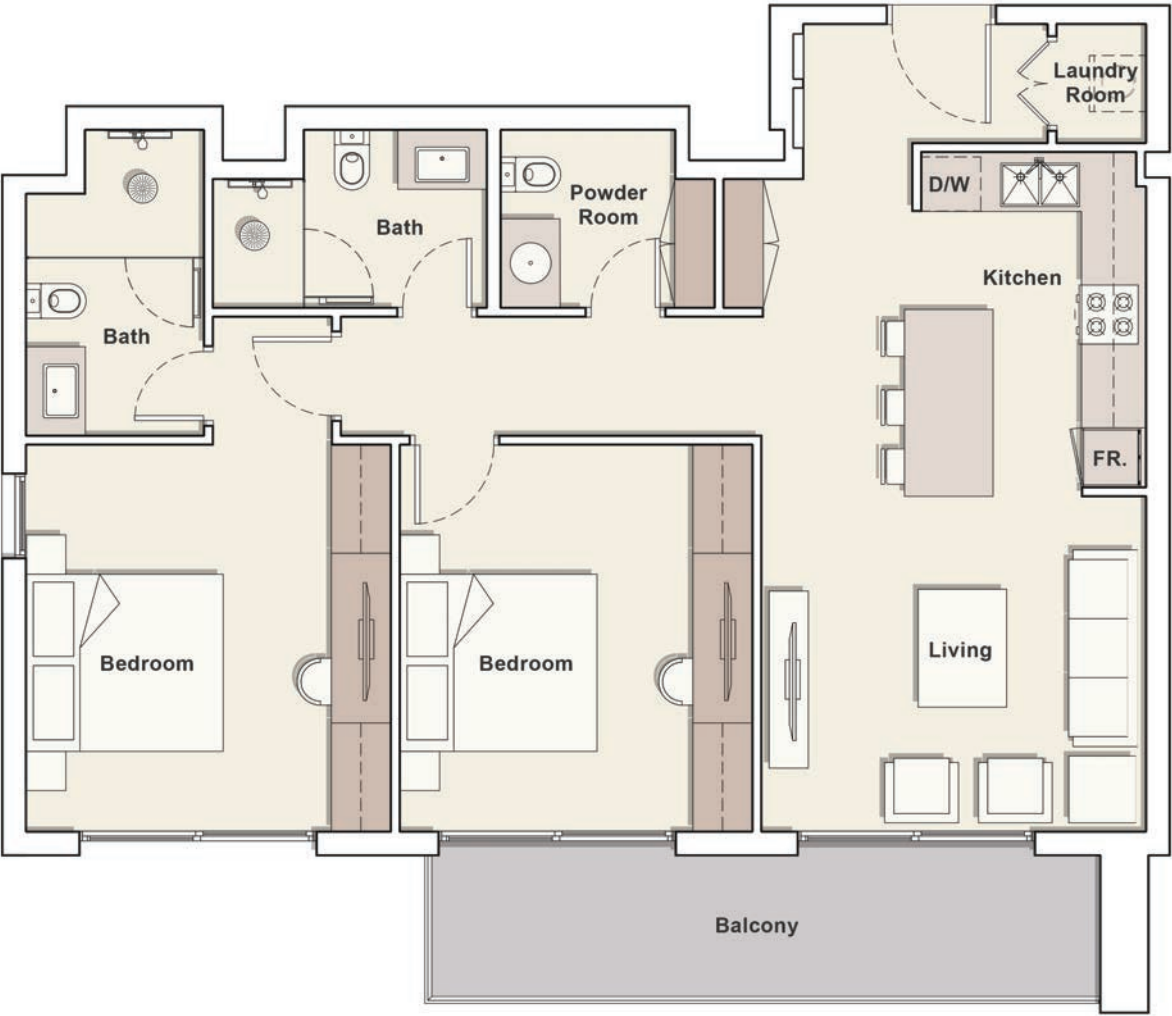


Internal Living Area 541.32 sq.ft.

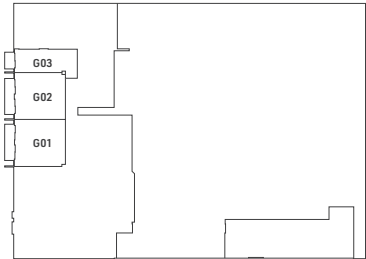
Outdoor Living Area 84.17 sq.ft.

Total Living Area 625.49 sq.ft.

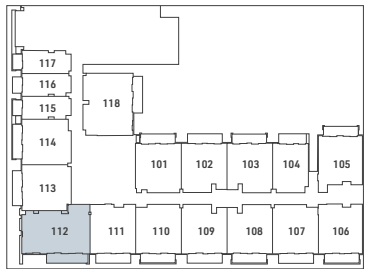
# 2 BEDROOM TYPE A



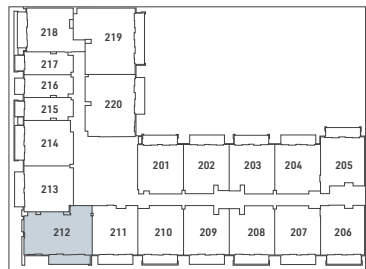
Ground Floor



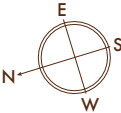
1<sup>st</sup> Floor



2<sup>nd</sup> to 5<sup>th</sup> Floor



All drawings and dimensions are approximate. Drawings are not to scale and are subject to change without notice. The developer reserves the right to make revisions. The units are measured at typical floor in the building and columns may vary in size depending on the floor level. The furnishings and accessories shown are for representation only. The length and width of the Unit and balcony varies depending on which floor and which orientation the unit is located within the building to comply with the building authority regulations. Apartment unit sizes may vary. Actual unit sizes will be reflected on the Sales and Purchase Agreement.



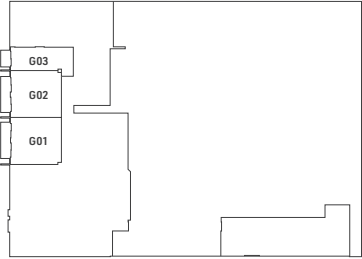
Internal Living Area	942.38 sq.ft.
Outdoor Living Area	123.57 sq.ft.
Total Living Area	1,065.95 sq.ft.



# 2 BEDROOM TYPE B



Ground Floor



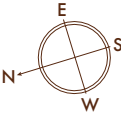
1<sup>st</sup> Floor



2<sup>nd</sup> to 5<sup>th</sup> Floor

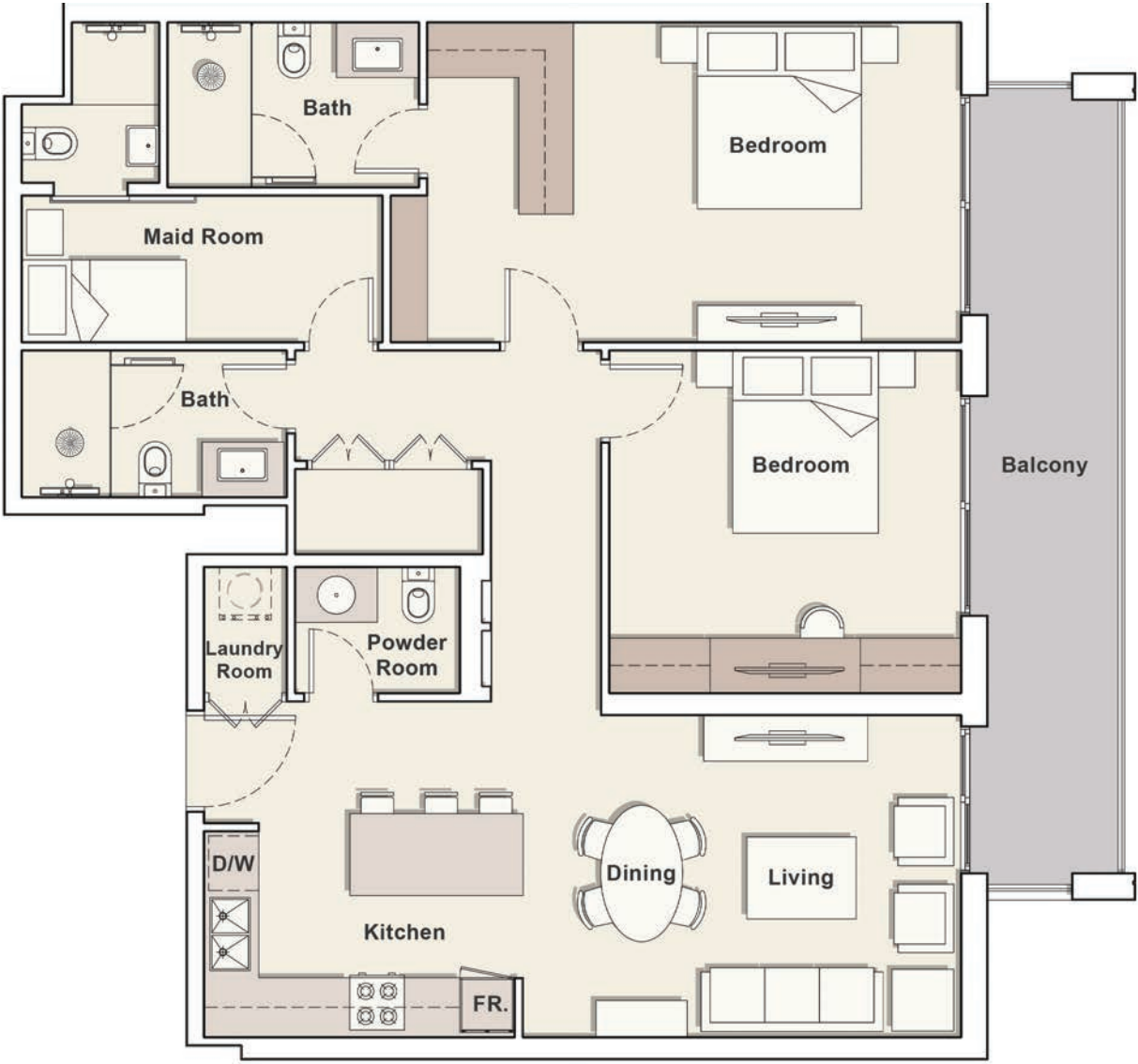


All drawings and dimensions are approximate. Drawings are not to scale and are subject to change without notice. The developer reserves the right to make revisions. The units are measured at typical floor in the building and columns may vary in size depending on the floor level. The furnishings and accessories shown are for representation only. The length and width of the Unit and balcony varies depending on which floor and which orientation the unit is located within the building to comply with the building authority regulations. Apartment unit sizes may vary. Actual unit sizes will be reflected on the Sales and Purchase Agreement.

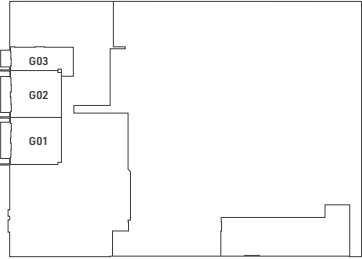


Internal Living Area	952.39 sq.ft.
Outdoor Living Area	113.45 sq.ft.
Total Living Area	1,065.84 sq.ft.

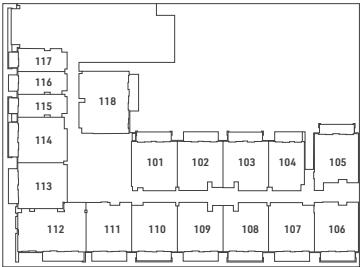
# 2 BEDROOM TYPE C



Ground Floor



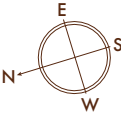
1<sup>st</sup> Floor



2<sup>nd</sup> to 5<sup>th</sup> Floor



All drawings and dimensions are approximate. Drawings are not to scale and are subject to change without notice. The developer reserves the right to make revisions. The units are measured at typical floor in the building and columns may vary in size depending on the floor level. The furnishings and accessories shown are for representation only. The length and width of the Unit and balcony varies depending on which floor and which orientation the unit is located within the building to comply with the building authority regulations. Apartment unit sizes may vary. Actual unit sizes will be reflected on the Sales and Purchase Agreement.



Internal Living Area	1,142.39 sq.ft.
Outdoor Living Area	158.23 sq.ft.
Total Living Area	1,300.71 sq.ft.