

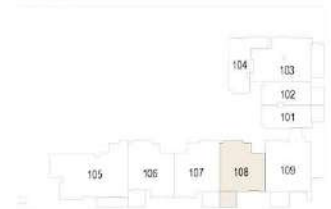
1 BEDROOM TYPE C

THE SLOANE

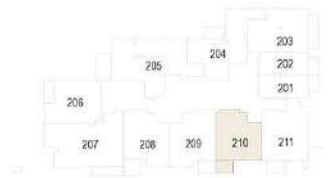
by BELGRAVIA HEIGHTS



1st Floor



2nd - 13th Floor



Internal Living Area	679.96 sq. ft.
External Living Area	71.90 sq. ft.
Total Living Area	751.86 sq. ft.

All drawings and dimensions are approximate. Drawings are not to scale and are subject to change without notice. The developer reserves the right to make revisions. The units are measured at typical floor in the building and columns may vary in size depending on the floor level. The furnishings and accessories shown are for representation only. The length and width of the Unit and balcony varies depending on which floor and which orientation the unit is located within the building to comply with the building authority regulations. Apartment unit sizes may vary. Actual unit sizes will be reflected on the Sales and Purchase Agreement.

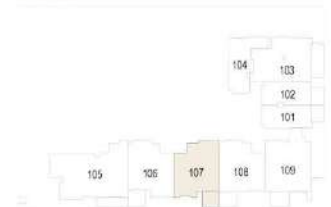
1 BEDROOM TYPE B-2

THE SLOANE

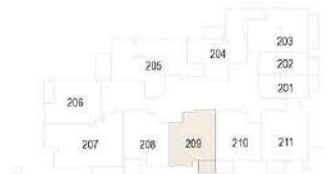
by BELGRAVIA HEIGHTS



1st Floor



2nd - 13th Floor



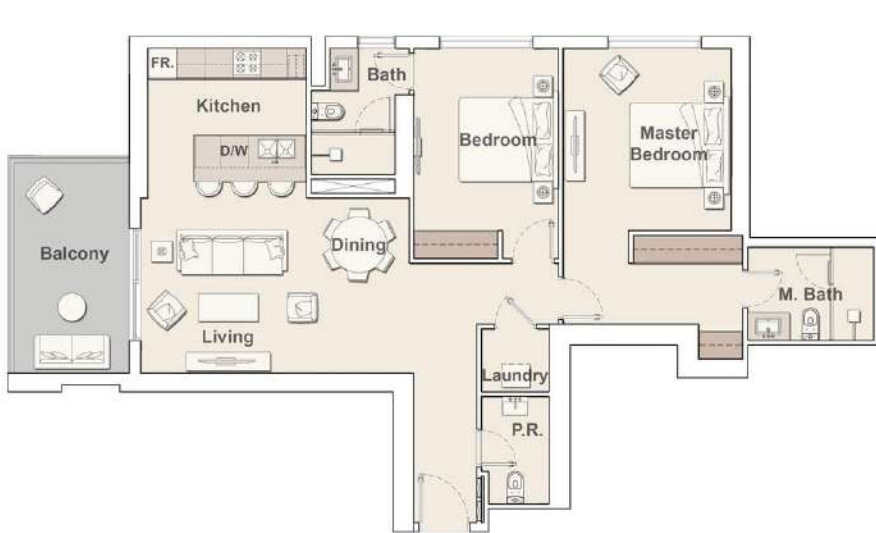
Internal Living Area	728.07 sq. ft.
External Living Area	71.90 sq. ft.
Total Living Area	799.97 sq. ft.

All drawings and dimensions are approximate. Drawings are not to scale and are subject to change without notice. The developer reserves the right to make revisions. The units are measured at typical floor in the building and columns may vary in size depending on the floor level. The furnishings and accessories shown are for representation only. The length and width of the Unit and balcony varies depending on which floor and which orientation the unit is located within the building to comply with the building authority regulations. Apartment unit sizes may vary. Actual unit sizes will be reflected on the Sales and Purchase Agreement.

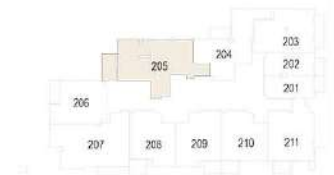
2 BEDROOM TYPE I

THE SLOANE

by BELGRAVIA HEIGHTS



2nd - 13th Floor



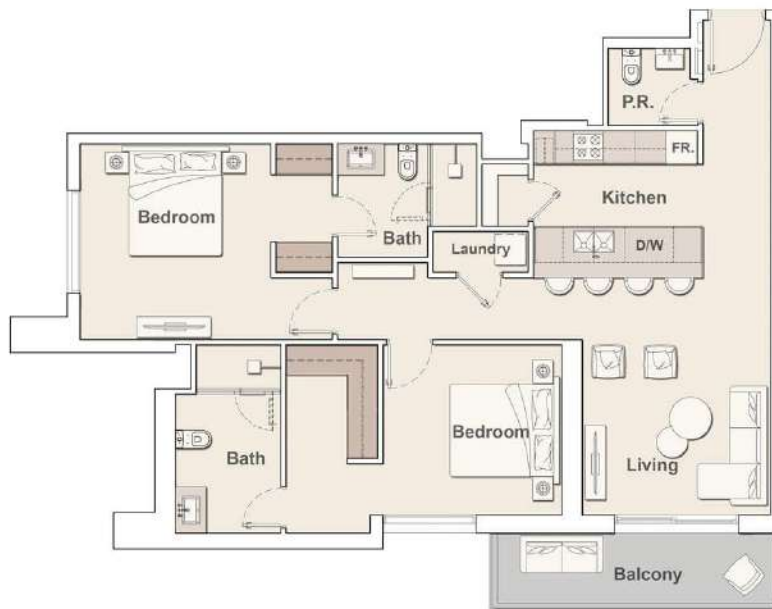
Internal Living Area	1,134.19 sq. ft.
External Living Area	134.12 sq. ft.
Total Living Area	1,268.31 sq. ft.

All drawings and dimensions are approximate. Drawings are not to scale and are subject to change without notice. The developer reserves the right to make revisions. The units are measured at typical floor in the building and columns may vary in size depending on the floor level. The furnishings and accessories shown are for representation only. The length and width of the Unit and balcony varies depending on which floor and which orientation the unit is located within the building to comply with the building authority regulations. Apartment unit sizes may vary. Actual unit sizes will be reflected on the Sales and Purchase Agreement.

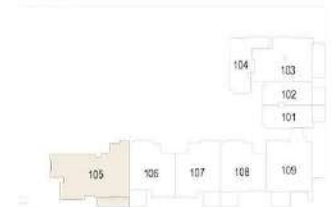
2 BEDROOM TYPE A

THE SLOANE

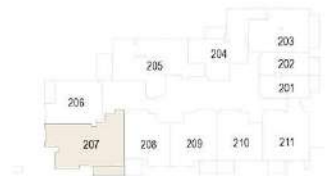
by BELGRAVIA HEIGHTS



1st Floor



2nd - 13th Floor



Internal Living Area	1,105.56 sq. ft.
External Living Area	95.15 sq. ft.
Total Living Area	1,200.71 sq. ft.

All drawings and dimensions are approximate. Drawings are not to scale and are subject to change without notice. The developer reserves the right to make revisions. The units are measured at typical floor in the building and columns may vary in size depending on the floor level. The furnishings and accessories shown are for representation only. The length and width of the Unit and balcony varies depending on which floor and which orientation the unit is located within the building to comply with the building authority regulations. Apartment unit sizes may vary. Actual unit sizes will be reflected on the Sales and Purchase Agreement.

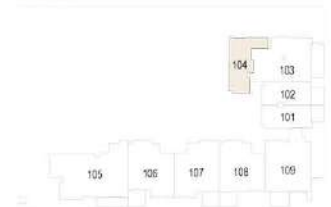
STUDIO TYPE G

THE SLOANE

by BELGRAVIA HEIGHTS



1st Floor



Internal Living Area	454.02 sq. ft.
External Living Area	
Total Living Area	454.02 sq. ft.

All drawings and dimensions are approximate. Drawings are not to scale and are subject to change without notice. The developer reserves the right to make revisions. The units are measured at typical floor in the building and columns may vary in size depending on the floor level. The furnishings and accessories shown are for representation only. The length and width of the Unit and balcony varies depending on which floor and which orientation the unit is located within the building to comply with the building authority regulations. Apartment unit sizes may vary. Actual unit sizes will be reflected on the Sales and Purchase Agreement.

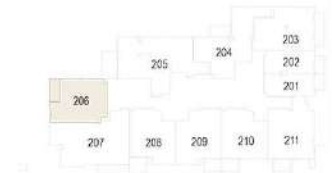
1 BEDROOM TYPE J

THE SLOANE

by BELGRAVIA HEIGHTS



2nd - 13th Floor



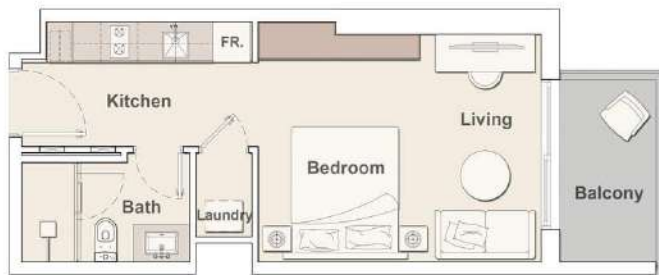
Internal Living Area	708.58 sq. ft.
External Living Area	76.75 sq. ft.
Total Living Area	785.33 sq. ft.

All drawings and dimensions are approximate. Drawings are not to scale and are subject to change without notice. The developer reserves the right to make revisions. The units are measured at typical floor in the building and columns may vary in size depending on the floor level. The furnishings and accessories shown are for representation only. The length and width of the Unit and balcony varies depending on which floor and which orientation the unit is located within the building to comply with the building authority regulations. Apartment unit sizes may vary. Actual unit sizes will be reflected on the Sales and Purchase Agreement.

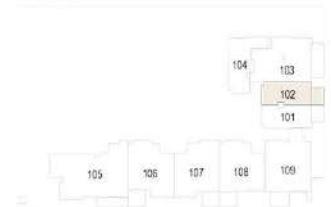
STUDIO TYPE E-2

THE SLOANE

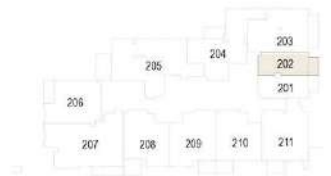
by BELGRAVIA HEIGHTS



1st Floor



2nd - 13th Floor



Internal Living Area	361.88 sq. ft.
External Living Area	59.20 sq. ft.
Total Living Area	421.08 sq. ft.

All drawings and dimensions are approximate. Drawings are not to scale and are subject to change without notice. The developer reserves the right to make revisions. The units are measured at typical floor in the building and columns may vary in size depending on the floor level. The furnishings and accessories shown are for representation only. The length and width of the Unit and balcony varies depending on which floor and which orientation the unit is located within the building to comply with the building authority regulations. Apartment unit sizes may vary. Actual unit sizes will be reflected on the Sales and Purchase Agreement.

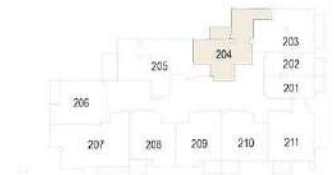
1 BEDROOM TYPE H

THE SLOANE

by BELGRAVIA HEIGHTS



2nd - 13th Floor



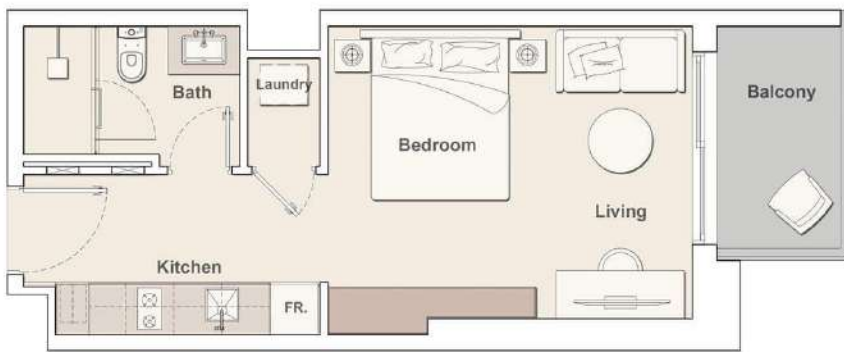
Internal Living Area	864.88 sq. ft.
External Living Area	79.65 sq. ft.
Total Living Area	944.53 sq. ft.

All drawings and dimensions are approximate. Drawings are not to scale and are subject to change without notice. The developer reserves the right to make revisions. The units are measured at typical floor in the building and columns may vary in size depending on the floor level. The furnishings and accessories shown are for representation only. The length and width of the Unit and balcony varies depending on which floor and which orientation the unit is located within the building to comply with the building authority regulations. Apartment unit sizes may vary. Actual unit sizes will be reflected on the Sales and Purchase Agreement.

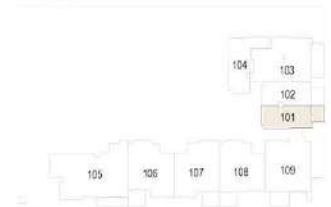
STUDIO TYPE E-1

THE SLOANE

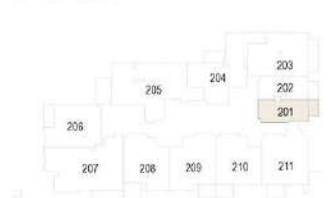
by BELGRAVIA HEIGHTS



1st Floor



2nd - 13th Floor



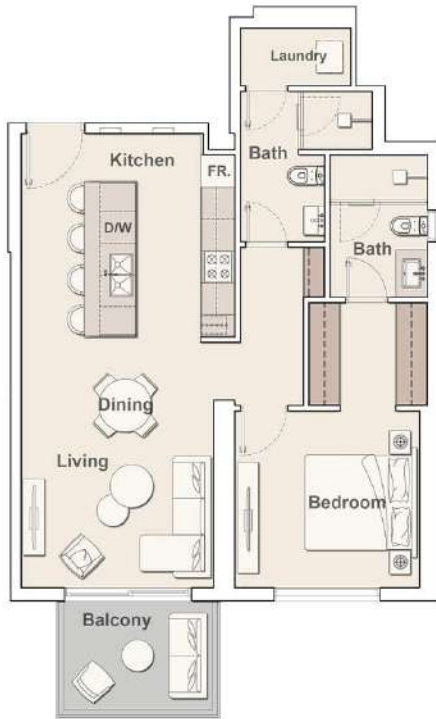
Internal Living Area	363.61 sq. ft.
External Living Area	56.40 sq. ft.
Total Living Area	420.01 sq. ft.

All drawings and dimensions are approximate. Drawings are not to scale and are subject to change without notice. The developer reserves the right to make revisions. The units are measured at typical floor in the building and columns may vary in size depending on the floor level. The furnishings and accessories shown are for representation only. The length and width of the Unit and balcony varies depending on which floor and which orientation the unit is located within the building to comply with the building authority regulations. Apartment unit sizes may vary. Actual unit sizes will be reflected on the Sales and Purchase Agreement.

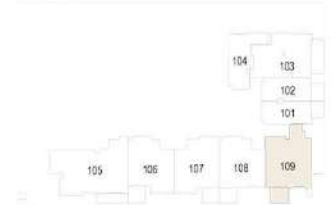
1 BEDROOM TYPE D

THE SLOANE

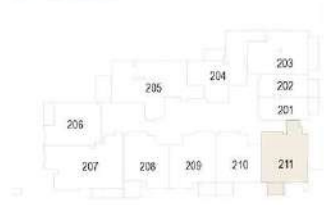
by BELGRAVIA HEIGHTS



1st Floor



2nd - 13th Floor



Internal Living Area	795.13 sq. ft.
External Living Area	70.07 sq. ft.
Total Living Area	865.20 sq. ft.

All drawings and dimensions are approximate. Drawings are not to scale and are subject to change without notice. The developer reserves the right to make revisions. The units are measured at typical floor in the building and columns may vary in size depending on the floor level. The furnishings and accessories shown are for representation only. The length and width of the Unit and balcony varies depending on which floor and which orientation the unit is located within the building to comply with the building authority regulations. Apartment unit sizes may vary. Actual unit sizes will be reflected on the Sales and Purchase Agreement.