

**DUBAI CREEK**  
HARBOUR

**BREEZE AT  
CREEK BEACH**

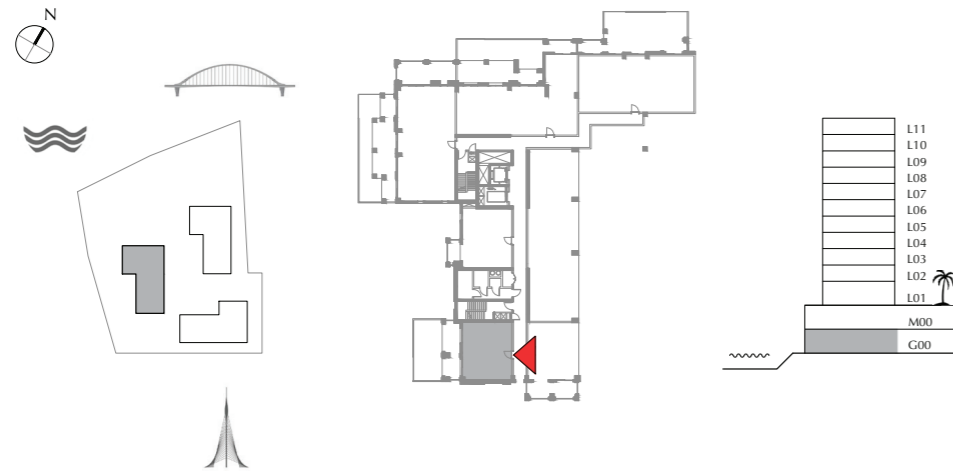
BUILDING 2

GROUND LEVEL

UNIT G01

**1 BEDROOM**

|                |              |                |
|----------------|--------------|----------------|
| APARTMENT AREA | 56.24 SQ.M.  | 605.36 SQ.FT.  |
| BALCONY AREA   | 57.28 SQ.M.  | 616.56 SQ.FT.  |
| TOTAL AREA     | 113.52 SQ.M. | 1221.92 SQ.FT. |



FLOOR PLAN 1. All dimensions are in imperial and metric, and measured from finish to finish excluding construction tolerances. 2. All materials, dimensions, and drawings are approximate only. 3. Information is subject to change without notice, at developer's absolute discretion. 4. Actual area may vary from the stated area. 5. Drawings not to scale. 6. All images used are for illustrative purpose only and do not represent the actual size, features, specifications, fittings, and finishings. 7. The developer reserves the right to make revisions / alterations, at its absolute discretion, without any liability whatsoever.

**DUBAI CREEK**  
HARBOUR

**BREEZE AT  
CREEK BEACH**

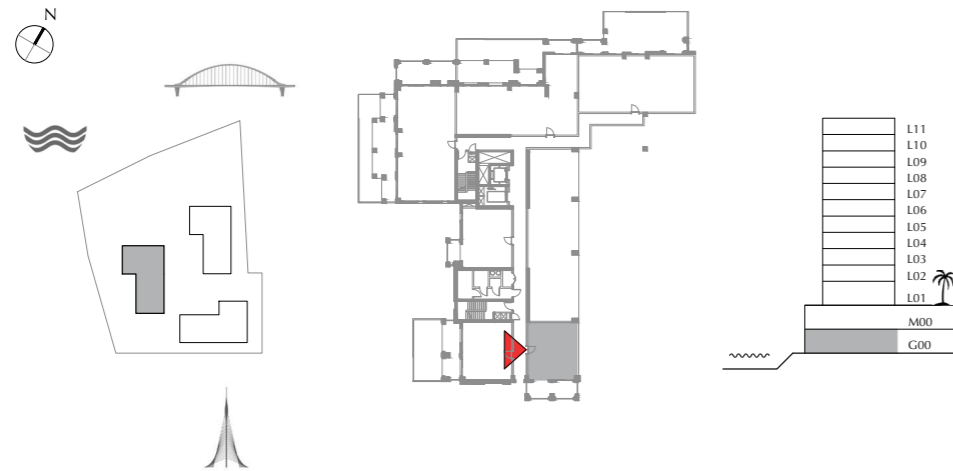
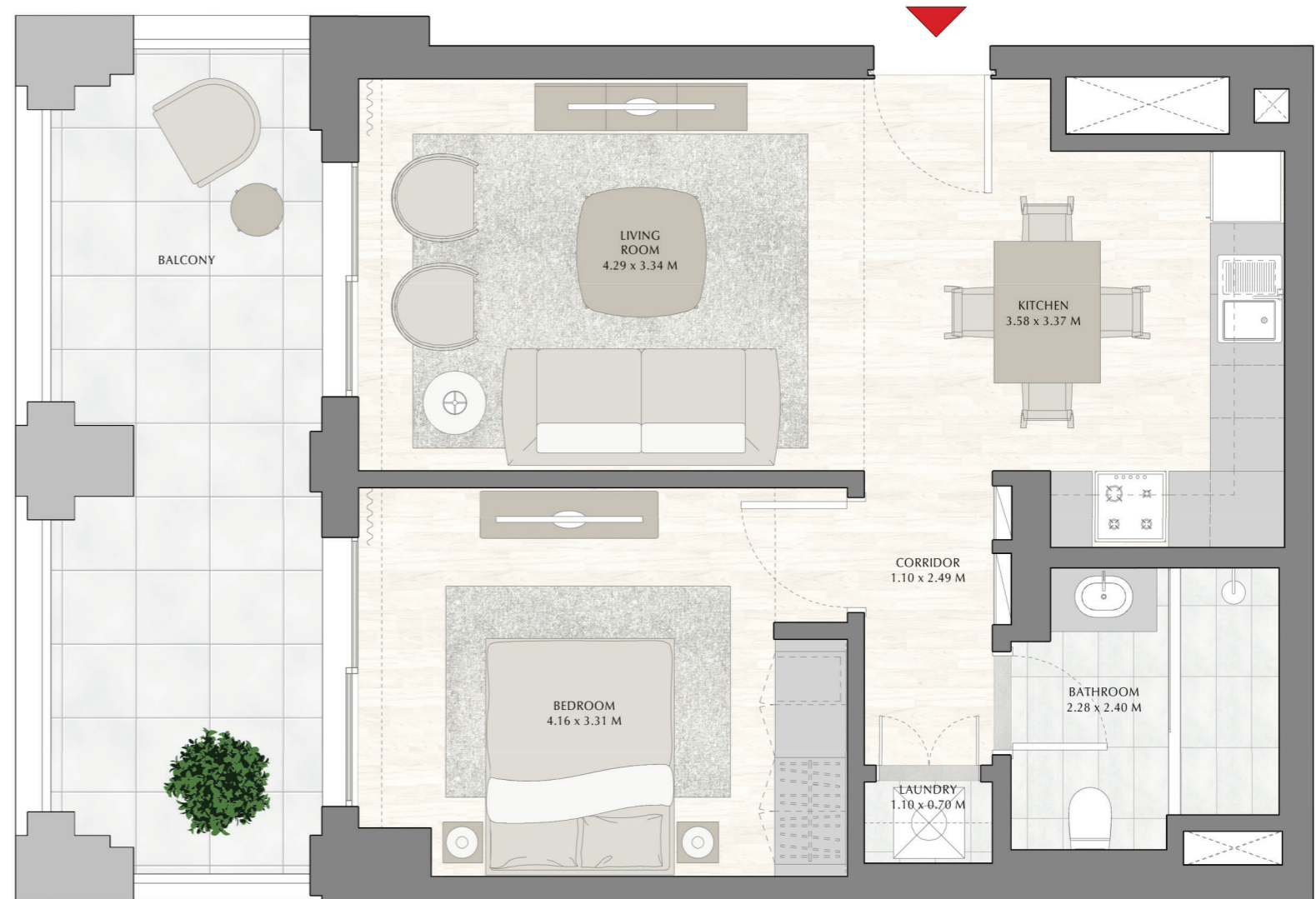
BUILDING 2

GROUND LEVEL

UNIT G02

**1 BEDROOM**

|                |             |               |
|----------------|-------------|---------------|
| APARTMENT AREA | 55.04 SQ.M. | 592.45 SQ.FT. |
| BALCONY AREA   | 18.17 SQ.M. | 195.58 SQ.FT. |
| TOTAL AREA     | 73.21 SQ.M. | 788.03 SQ.FT. |



FLOOR PLAN 1. All dimensions are in imperial and metric, and measured from finish to finish excluding construction tolerances. 2. All materials, dimensions, and drawings are approximate only. 3. Information is subject to change without notice, at developer's absolute discretion. 4. Actual area may vary from the stated area. 5. Drawings not to scale. 6. All images used are for illustrative purpose only and do not represent the actual size, features, specifications, fittings, and finishings. 7. The developer reserves the right to make revisions / alterations, at its absolute discretion, without any liability whatsoever.



DUBAI CREEK  
HARBOUR

BREEZE AT  
CREEK BEACH

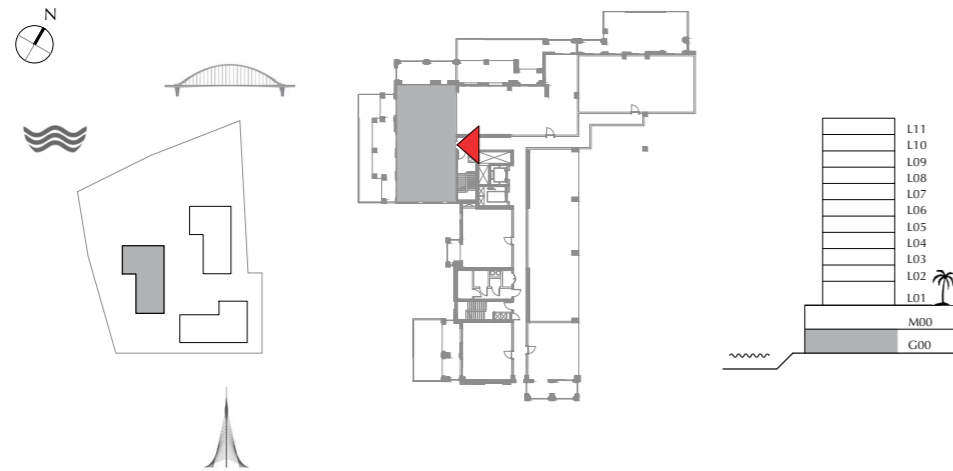
BUILDING 2

GROUND LEVEL

UNIT G03

3 BEDROOM

|                |              |                |
|----------------|--------------|----------------|
| APARTMENT AREA | 129.79 SQ.M. | 1397.05 SQ.FT. |
| BALCONY AREA   | 108.74 SQ.M. | 1170.47 SQ.FT. |
| TOTAL AREA     | 238.53 SQ.M. | 2567.52 SQ.FT. |



FLOOR PLAN 1. All dimensions are in imperial and metric, and measured from finish to finish excluding construction tolerances. 2. All materials, dimensions, and drawings are approximate only. 3. Information is subject to change without notice, at developer's absolute discretion. 4. Actual area may vary from the stated area. 5. Drawings not to scale. 6. All images used are for illustrative purpose only and do not represent the actual size, features, specifications, fittings, and furnishings. 7. The developer reserves the right to make revisions / alterations, at its absolute discretion, without any liability whatsoever.

DUBAI CREEK  
HARBOUR

BREEZE AT  
CREEK BEACH

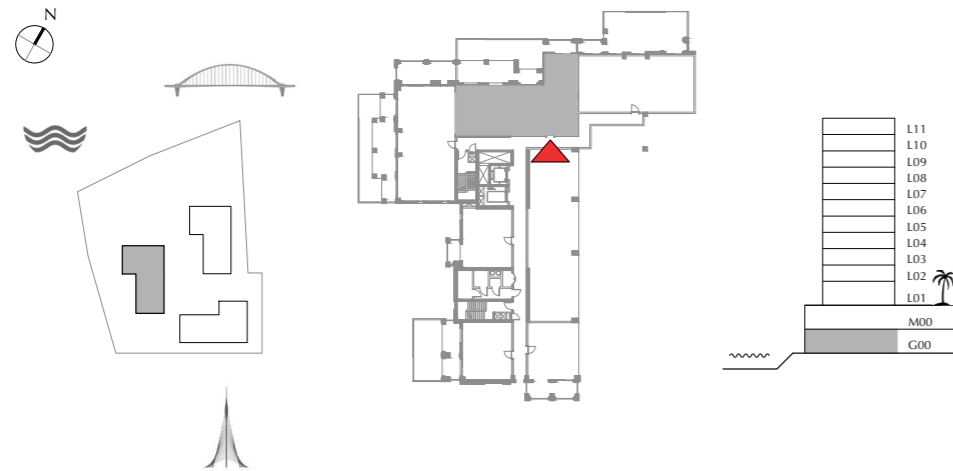
BUILDING 2

GROUND LEVEL

UNIT G04

3 BEDROOM

|                |              |                |
|----------------|--------------|----------------|
| APARTMENT AREA | 132.4 SQ.M.  | 1425.14 SQ.FT. |
| BALCONY AREA   | 87.77 SQ.M.  | 944.75 SQ.FT.  |
| TOTAL AREA     | 220.17 SQ.M. | 2369.89 SQ.FT. |



FLOOR PLAN 1. All dimensions are in imperial and metric, and measured from finish to finish excluding construction tolerances. 2. All materials, dimensions, and drawings are approximate only. 3. Information is subject to change without notice, at developer's absolute discretion. 4. Actual area may vary from the stated area. 5. Drawings not to scale. 6. All images used are for illustrative purpose only and do not represent the actual size, features, specifications, fittings, and finishings. 7. The developer reserves the right to make revisions / alterations, at its absolute discretion, without any liability whatsoever.

DUBAI CREEK  
HARBOUR

BREEZE AT  
CREEK BEACH

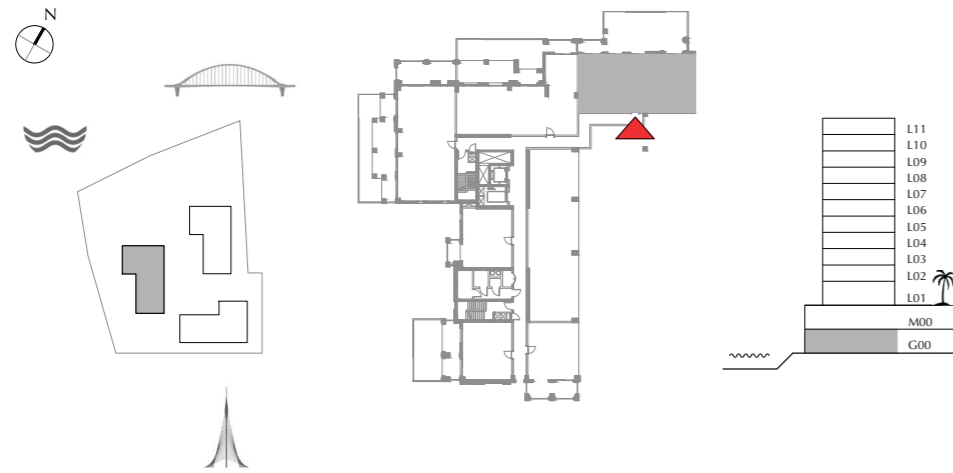
BUILDING 2

GROUND LEVEL

UNIT G05

3 BEDROOM

|                |              |                |
|----------------|--------------|----------------|
| APARTMENT AREA | 133.47 SQ.M. | 1436.66 SQ.FT. |
| BALCONY AREA   | 75.13 SQ.M.  | 808.69 SQ.FT.  |
| TOTAL AREA     | 208.6 SQ.M.  | 2245.35 SQ.FT. |



FLOOR PLAN 1. All dimensions are in imperial and metric, and measured from finish to finish excluding construction tolerances. 2. All materials, dimensions, and drawings are approximate only. 3. Information is subject to change without notice, at developer's absolute discretion. 4. Actual area may vary from the stated area. 5. Drawings not to scale. 6. All images used are for illustrative purpose only and do not represent the actual size, features, specifications, fittings, and finishings. 7. The developer reserves the right to make revisions / alterations, at its absolute discretion, without any liability whatsoever.

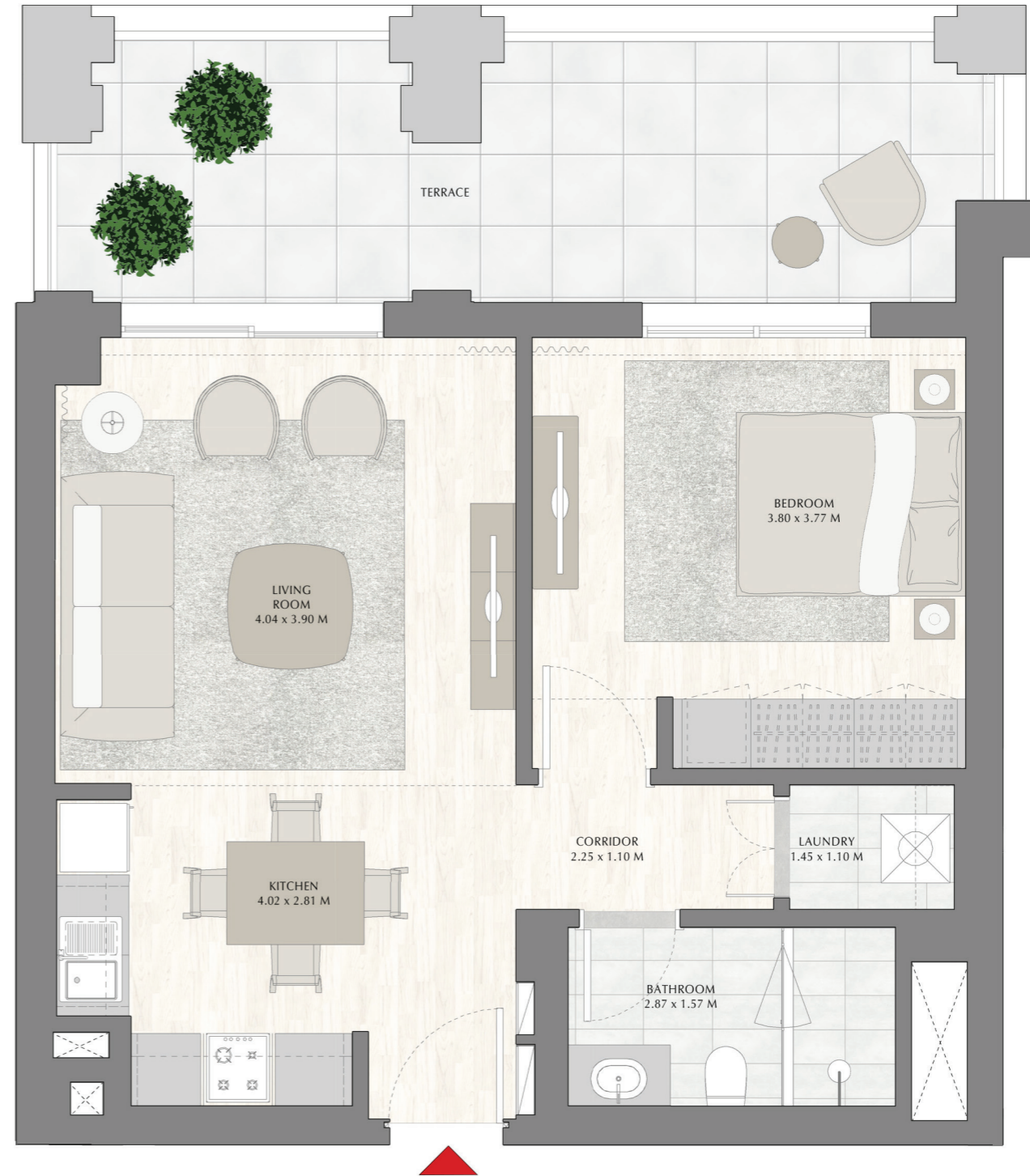
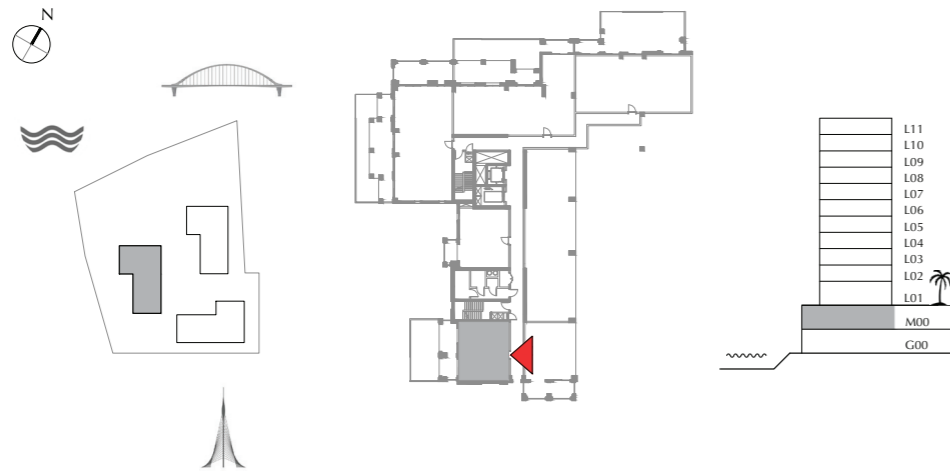
**DUBAI CREEK**  
HARBOUR

**BREEZE AT  
CREEK BEACH**

BUILDING 2  
MEZZANINE LEVEL  
UNIT M01

**1 BEDROOM**

|                |             |               |
|----------------|-------------|---------------|
| APARTMENT AREA | 56.24 SQ.M. | 605.36 SQ.FT. |
| BALCONY AREA   | 21.12 SQ.M. | 227.33 SQ.FT. |
| TOTAL AREA     | 77.36 SQ.M. | 832.69 SQ.FT. |



FLOOR PLAN 1. All dimensions are in imperial and metric, and measured from finish to finish excluding construction tolerances. 2. All materials, dimensions, and drawings are approximate only. 3. Information is subject to change without notice, at developer's absolute discretion. 4. Actual area may vary from the stated area. 5. Drawings not to scale. 6. All images used are for illustrative purpose only and do not represent the actual size, features, specifications, fittings, and finishings. 7. The developer reserves the right to make revisions / alterations, at its absolute discretion, without any liability whatsoever.

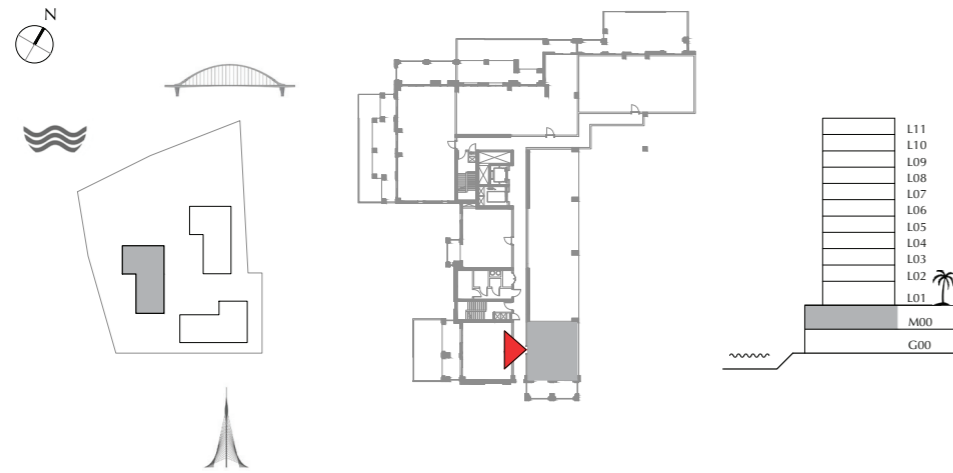
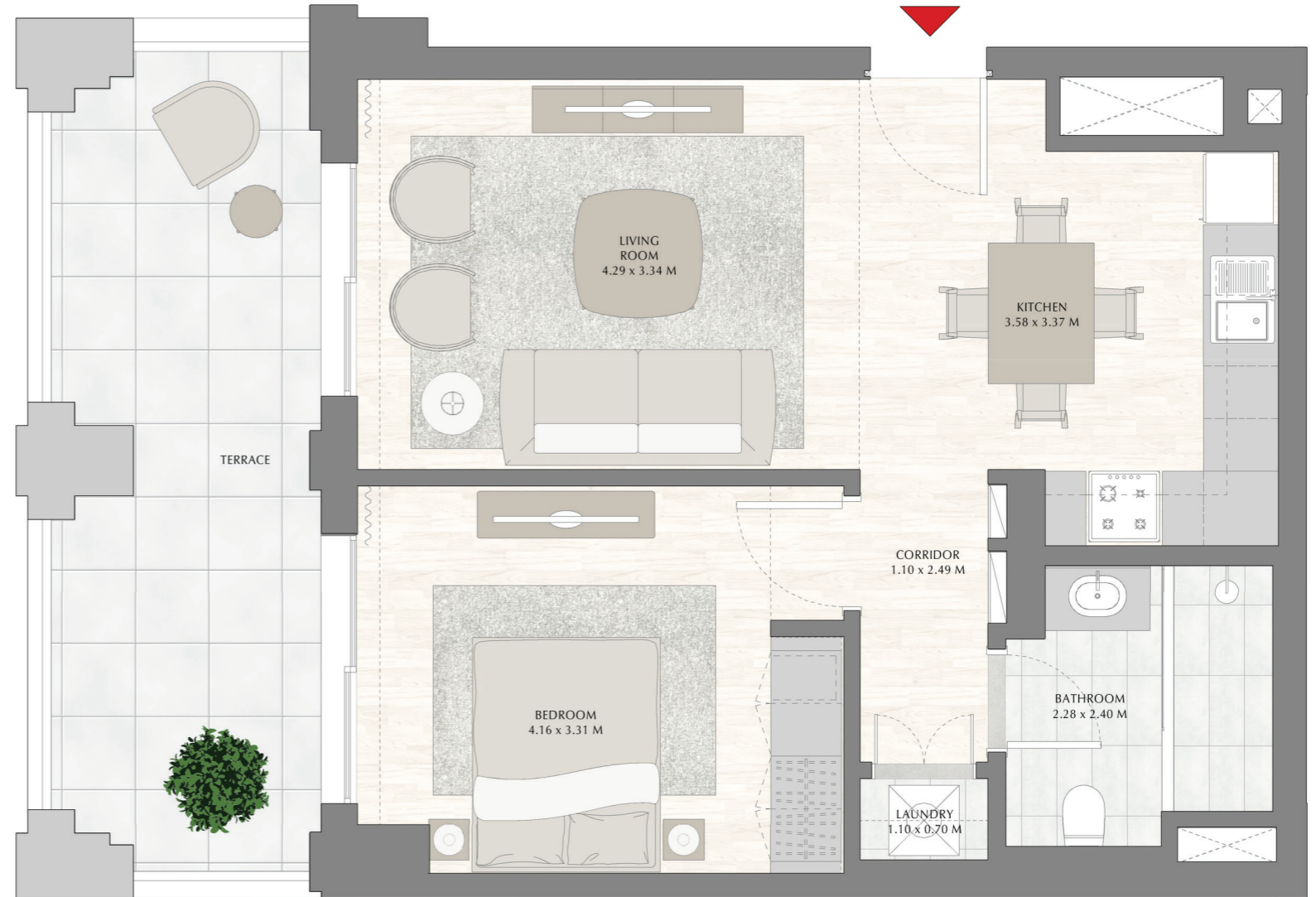
**DUBAI CREEK**  
HARBOUR

**BREEZE AT  
CREEK BEACH**

BUILDING 2  
MEZZANINE LEVEL  
UNIT M02

**1 BEDROOM**

|                |             |               |
|----------------|-------------|---------------|
| APARTMENT AREA | 55.04 SQ.M. | 592.45 SQ.FT. |
| BALCONY AREA   | 18.17 SQ.M. | 195.58 SQ.FT. |
| TOTAL AREA     | 73.21 SQ.M. | 788.03 SQ.FT. |



FLOOR PLAN 1. All dimensions are in imperial and metric, and measured from finish to finish excluding construction tolerances. 2. All materials, dimensions, and drawings are approximate only. 3. Information is subject to change without notice, at developer's absolute discretion. 4. Actual area may vary from the stated area. 5. Drawings not to scale. 6. All images used are for illustrative purpose only and do not represent the actual size, features, specifications, fittings, and furnishings. 7. The developer reserves the right to make revisions / alterations, at its absolute discretion, without any liability whatsoever.



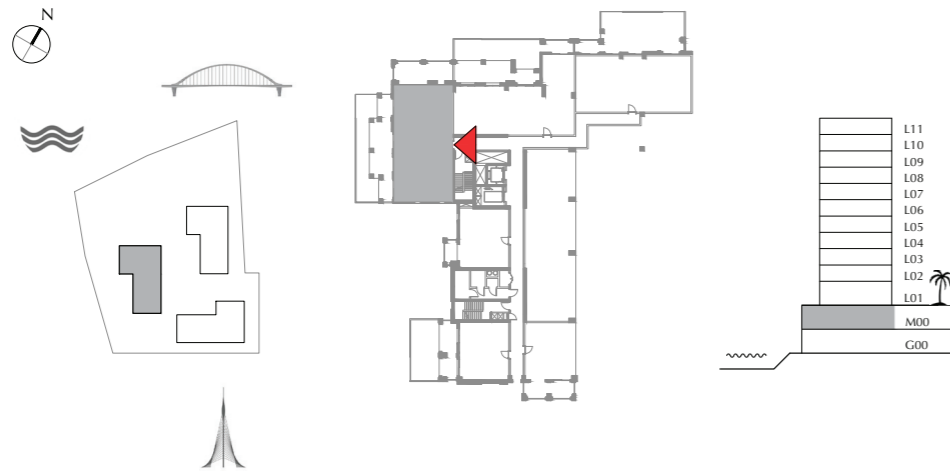
DUBAI CREEK  
HARBOUR

BREEZE AT  
CREEK BEACH

BUILDING 2  
MEZZANINE LEVEL  
UNIT M03

3 BEDROOM

|                |              |                |
|----------------|--------------|----------------|
| APARTMENT AREA | 129.79 SQ.M. | 1397.05 SQ.FT. |
| BALCONY AREA   | 66.92 SQ.M.  | 720.32 SQ.FT.  |
| TOTAL AREA     | 196.71 SQ.M. | 2117.37 SQ.FT. |



FLOOR PLAN 1. All dimensions are in imperial and metric, and measured from finish to finish excluding construction tolerances. 2. All materials, dimensions, and drawings are approximate only. 3. Information is subject to change without notice, at developer's absolute discretion. 4. Actual area may vary from the stated area. 5. Drawings not to scale. 6. All images used are for illustrative purpose only and do not represent the actual size, features, specifications, fittings, and furnishings. 7. The developer reserves the right to make revisions / alterations, at its absolute discretion, without any liability whatsoever.



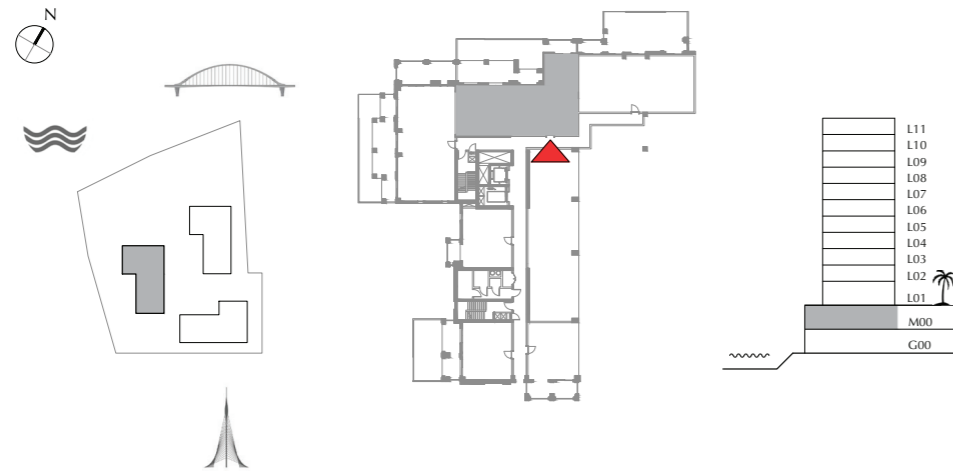
DUBAI CREEK  
HARBOUR

BREEZE AT  
CREEK BEACH

BUILDING 2  
MEZZANINE LEVEL  
UNIT M04

3 BEDROOM

|                |              |                |
|----------------|--------------|----------------|
| APARTMENT AREA | 132.40 SQ.M. | 1425.14 SQ.FT. |
| BALCONY AREA   | 45.13 SQ.M.  | 485.78 SQ.FT.  |
| TOTAL AREA     | 177.53 SQ.M. | 1910.92 SQ.FT. |



FLOOR PLAN 1. All dimensions are in imperial and metric, and measured from finish to finish excluding construction tolerances. 2. All materials, dimensions, and drawings are approximate only. 3. Information is subject to change without notice, at developer's absolute discretion. 4. Actual area may vary from the stated area. 5. Drawings not to scale. 6. All images used are for illustrative purpose only and do not represent the actual size, features, specifications, fittings, and finishings. 7. The developer reserves the right to make revisions / alterations, at its absolute discretion, without any liability whatsoever.

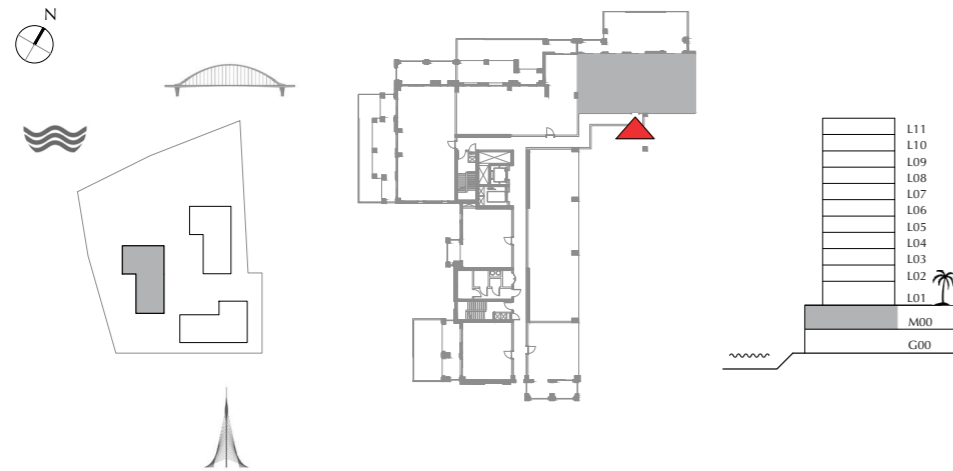
DUBAI CREEK  
HARBOUR

BREEZE AT  
CREEK BEACH

BUILDING 2  
MEZZANINE LEVEL  
UNIT M05

3 BEDROOM

|                |              |                |
|----------------|--------------|----------------|
| APARTMENT AREA | 133.53 SQ.M. | 1437.30 SQ.FT. |
| BALCONY AREA   | 39.78 SQ.M.  | 428.19 SQ.FT.  |
| TOTAL AREA     | 173.31 SQ.M. | 1865.49 SQ.FT. |



FLOOR PLAN 1. All dimensions are in imperial and metric, and measured from finish to finish excluding construction tolerances. 2. All materials, dimensions, and drawings are approximate only. 3. Information is subject to change without notice, at developer's absolute discretion. 4. Actual area may vary from the stated area. 5. Drawings not to scale. 6. All images used are for illustrative purpose only and do not represent the actual size, features, specifications, fittings, and furnishings. 7. The developer reserves the right to make revisions / alterations, at its absolute discretion, without any liability whatsoever.

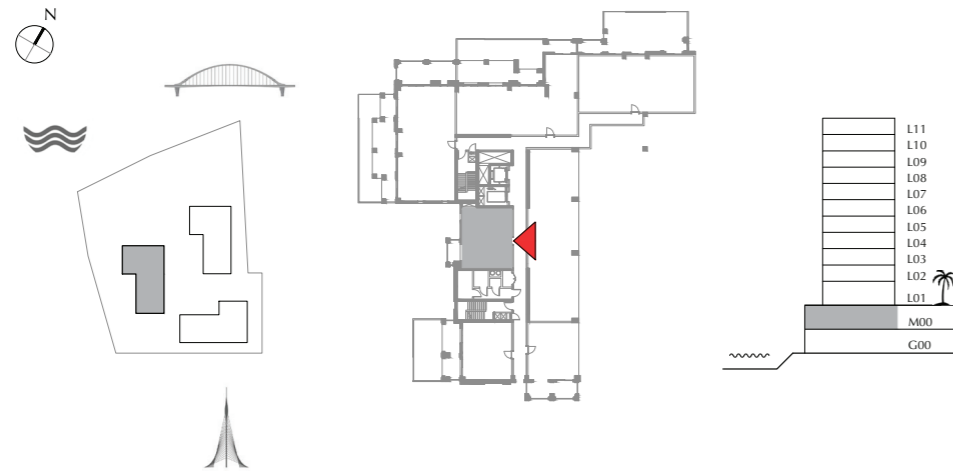
DUBAI CREEK  
HARBOUR

BREEZE AT  
CREEK BEACH

BUILDING 2  
MEZZANINE LEVEL  
UNIT M06

1 BEDROOM

|                |             |               |
|----------------|-------------|---------------|
| APARTMENT AREA | 58.16 SQ.M. | 626.03 SQ.FT. |
| BALCONY AREA   | 6.65 SQ.M.  | 71.58 SQ.FT.  |
| TOTAL AREA     | 64.81 SQ.M. | 697.61SQ.FT.  |



FLOOR PLAN 1. All dimensions are in imperial and metric, and measured from finish to finish excluding construction tolerances. 2.All materials, dimensions, and drawings are approximate only. 3. Information is subject to change without notice, at developer's absolute discretion. 4. Actual area may vary from the stated area. 5. Drawings not to scale. 6. All images used are for illustrative purpose only and do not represent the actual size, features, specifications, fittings, and furnishings. 7. The developer reserves the right to make revisions / alterations, at its absolute discretion, without any liability whatsoever.



DUBAI CREEK  
HARBOUR

BREEZE AT  
CREEK BEACH

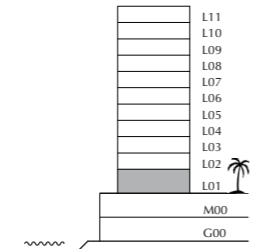
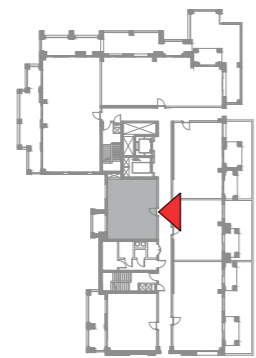
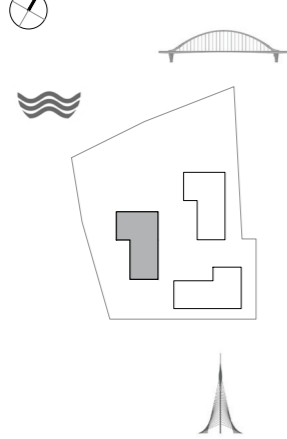
BUILDING 2

LEVEL 1

UNIT 101

1 BEDROOM

|                |             |               |
|----------------|-------------|---------------|
| APARTMENT AREA | 58.56 SQ.M. | 630.33 SQ.FT. |
| BALCONY AREA   | 6.4 SQ.M.   | 68.89 SQ.FT.  |
| TOTAL AREA     | 64.96 SQ.M. | 699.22 SQ.FT. |



FLOOR PLAN 1. All dimensions are in imperial and metric, and measured from finish to finish excluding construction tolerances. 2. All materials, dimensions, and drawings are approximate only. 3. Information is subject to change without notice, at developer's absolute discretion. 4. Actual area may vary from the stated area. 5. Drawings not to scale. 6. All images used are for illustrative purpose only and do not represent the actual size, features, specifications, fittings, and furnishings. 7. The developer reserves the right to make revisions / alterations, at its absolute discretion, without any liability whatsoever.

**DUBAI CREEK**  
HARBOUR

**BREEZE AT  
CREEK BEACH**

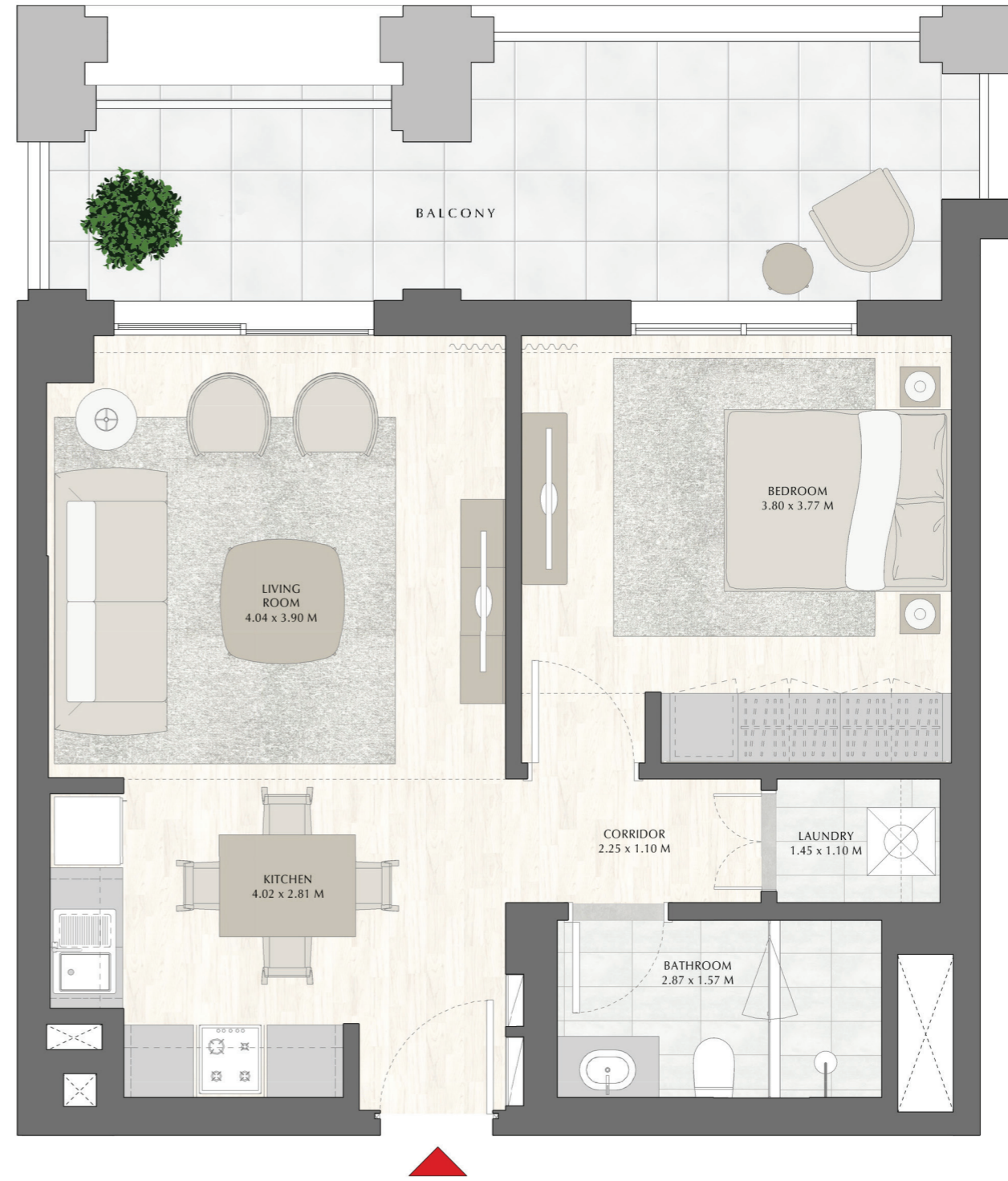
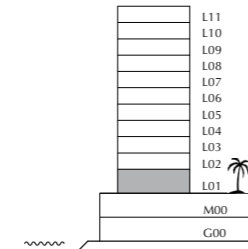
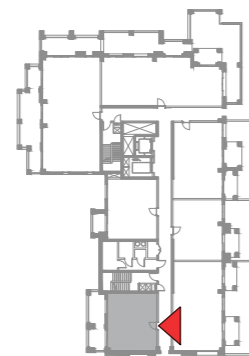
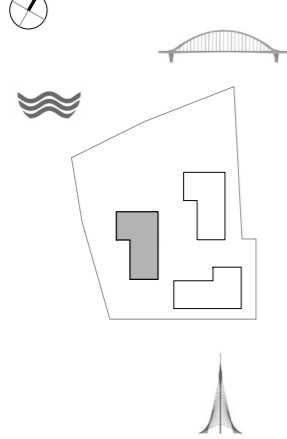
BUILDING 2

LEVEL 1

UNIT 102

**1 BEDROOM**

|                |             |               |
|----------------|-------------|---------------|
| APARTMENT AREA | 56.23 SQ.M. | 605.25 SQ.FT. |
| BALCONY AREA   | 18.96 SQ.M. | 204.08 SQ.FT. |
| TOTAL AREA     | 75.19 SQ.M. | 809.33 SQ.FT. |



FLOOR PLAN 1. All dimensions are in imperial and metric, and measured from finish to finish excluding construction tolerances. 2. All materials, dimensions, and drawings are approximate only. 3. Information is subject to change without notice, at developer's absolute discretion. 4. Actual area may vary from the stated area. 5. Drawings not to scale. 6. All images used are for illustrative purpose only and do not represent the actual size, features, specifications, fittings, and finishings. 7. The developer reserves the right to make revisions / alterations, at its absolute discretion, without any liability whatsoever.

DUBAI CREEK  
HARBOUR

BREEZE AT  
CREEK BEACH

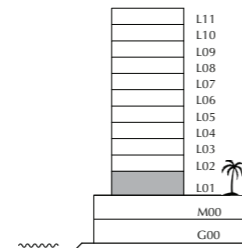
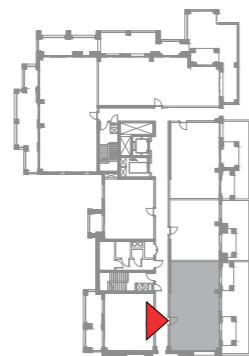
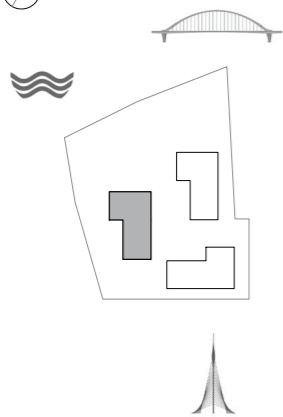
BUILDING 2

LEVEL 1

UNIT 103

2 BEDROOM

|                |              |                |
|----------------|--------------|----------------|
| APARTMENT AREA | 86.02 SQ.M.  | 925.91 SQ.FT.  |
| BALCONY AREA   | 53.45 SQ.M.  | 575.33 SQ.FT.  |
| TOTAL AREA     | 139.47 SQ.M. | 1501.24 SQ.FT. |



FLOOR PLAN 1. All dimensions are in imperial and metric, and measured from finish to finish excluding construction tolerances. 2. All materials, dimensions, and drawings are approximate only. 3. Information is subject to change without notice, at developer's absolute discretion. 4. Actual area may vary from the stated area. 5. Drawings not to scale. 6. All images used are for illustrative purpose only and do not represent the actual size, features, specifications, fittings, and finishings. 7. The developer reserves the right to make revisions / alterations, at its absolute discretion, without any liability whatsoever.

**DUBAI CREEK**  
HARBOUR

**BREEZE AT  
CREEK BEACH**

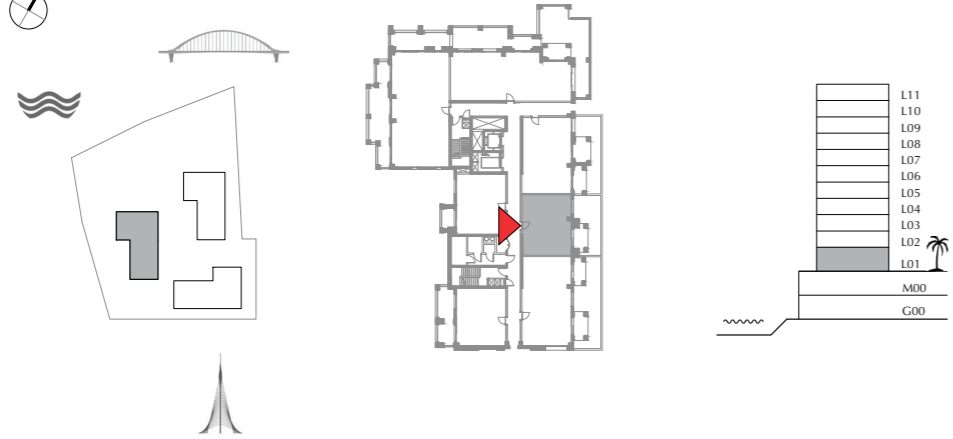
BUILDING 2

LEVEL 1

UNIT 104

**1 BEDROOM**

|                |             |                |
|----------------|-------------|----------------|
| APARTMENT AREA | 58.56 SQ.M. | 630.33 SQ.FT.  |
| BALCONY AREA   | 35.27 SQ.M. | 379.64 SQ.FT.  |
| TOTAL AREA     | 93.83 SQ.M. | 1009.97 SQ.FT. |



FLOOR PLAN 1. All dimensions are in imperial and metric, and measured from finish to finish excluding construction tolerances. 2. All materials, dimensions, and drawings are approximate only. 3. Information is subject to change without notice, at developer's absolute discretion. 4. Actual area may vary from the stated area. 5. Drawings not to scale. 6. All images used are for illustrative purpose only and do not represent the actual size, features, specifications, fittings, and finishings. 7. The developer reserves the right to make revisions / alterations, at its absolute discretion, without any liability whatsoever.

DUBAI CREEK  
HARBOUR

BREEZE AT  
CREEK BEACH

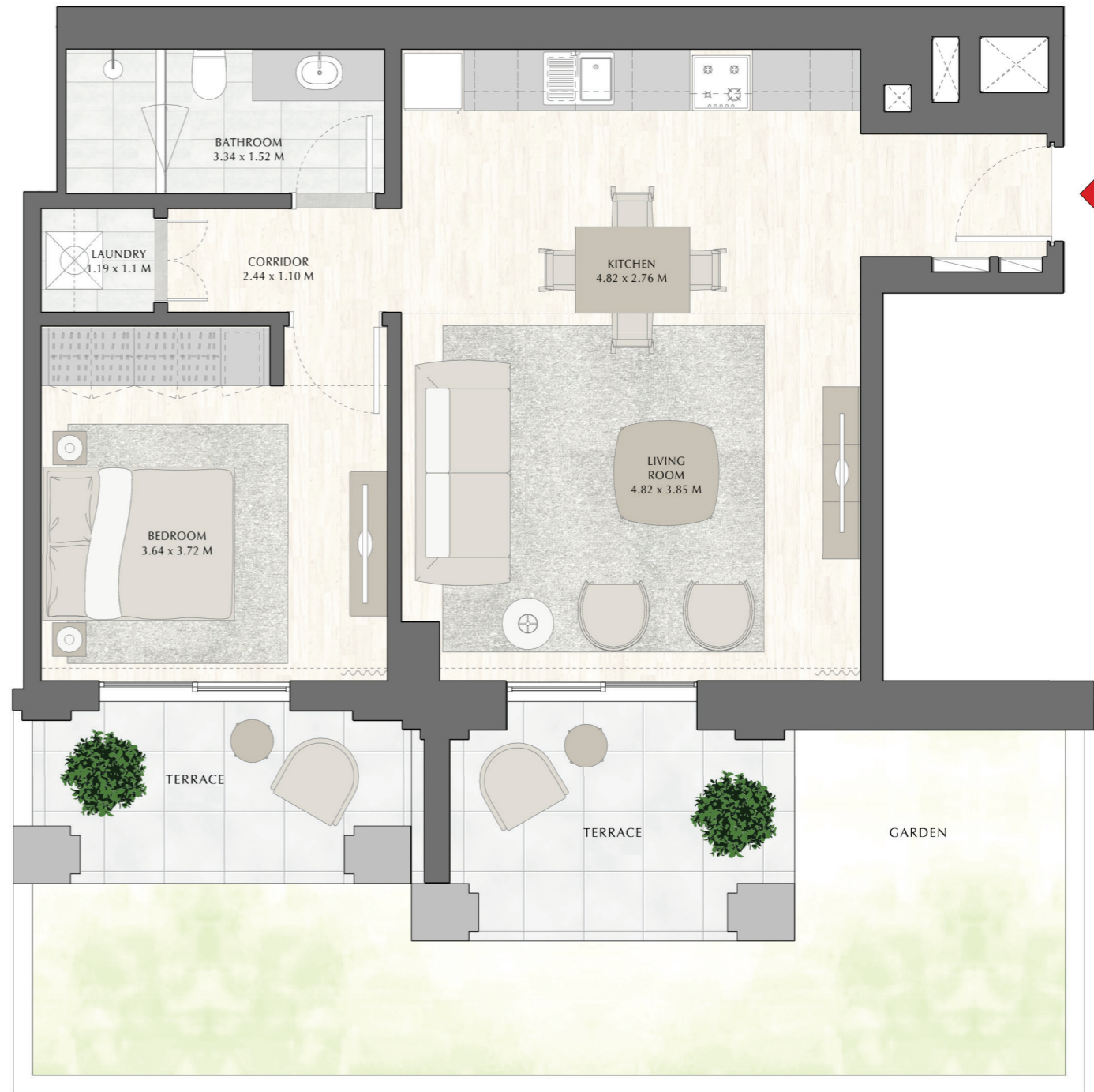
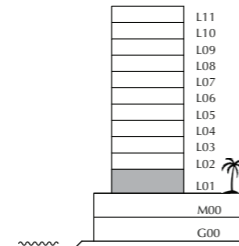
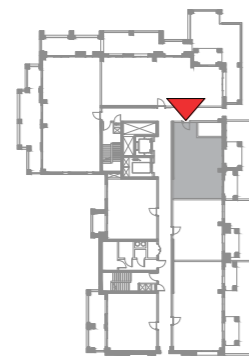
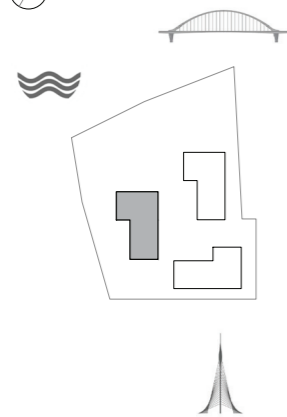
BUILDING 2

LEVEL 1

UNIT 105

1 BEDROOM

|                |              |                |
|----------------|--------------|----------------|
| APARTMENT AREA | 64.38 SQ.M.  | 692.98 SQ.FT.  |
| BALCONY AREA   | 45.26 SQ.M.  | 487.17 SQ.FT.  |
| TOTAL AREA     | 109.64 SQ.M. | 1180.15 SQ.FT. |



FLOOR PLAN 1. All dimensions are in imperial and metric, and measured from finish to finish excluding construction tolerances. 2. All materials, dimensions, and drawings are approximate only. 3. Information is subject to change without notice, at developer's absolute discretion. 4. Actual area may vary from the stated area. 5. Drawings not to scale. 6. All images used are for illustrative purpose only and do not represent the actual size, features, specifications, fittings, and finishings. 7. The developer reserves the right to make revisions / alterations, at its absolute discretion, without any liability whatsoever.

DUBAI CREEK  
HARBOUR

BREEZE AT  
CREEK BEACH

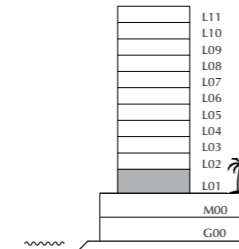
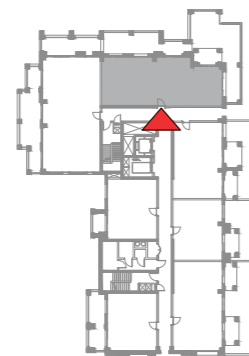
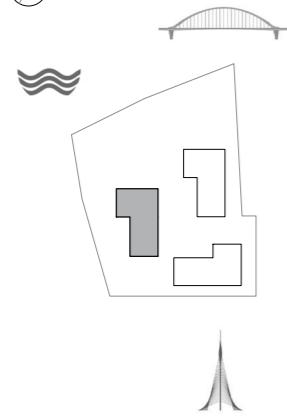
BUILDING 2

LEVEL 1

UNIT 106

2 BEDROOM

|                |              |                |
|----------------|--------------|----------------|
| APARTMENT AREA | 111.24 SQ.M. | 1197.38 SQ.FT. |
| BALCONY AREA   | 93.05 SQ.M.  | 1001.58 SQ.FT. |
| TOTAL AREA     | 204.29 SQ.M. | 2198.96 SQ.FT. |



FLOOR PLAN 1. All dimensions are in imperial and metric, and measured from finish to finish excluding construction tolerances. 2. All materials, dimensions, and drawings are approximate only. 3. Information is subject to change without notice, at developer's absolute discretion. 4. Actual area may vary from the stated area. 5. Drawings not to scale. 6. All images used are for illustrative purpose only and do not represent the actual size, features, specifications, fittings, and finishings. 7. The developer reserves the right to make revisions / alterations, at its absolute discretion, without any liability whatsoever.

DUBAI CREEK  
HARBOUR

BREEZE AT  
CREEK BEACH

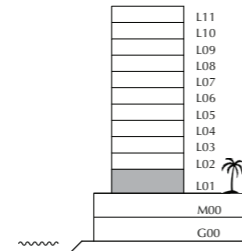
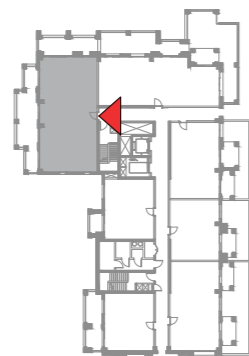
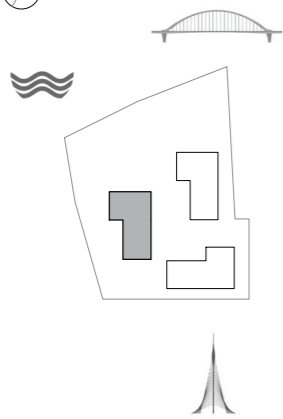
BUILDING 2

LEVEL 1

UNIT 107

3 BEDROOM

|                |              |                |
|----------------|--------------|----------------|
| APARTMENT AREA | 129.79 SQ.M. | 1397.05 SQ.FT. |
| BALCONY AREA   | 60.48 SQ.M.  | 651.00 SQ.FT.  |
| TOTAL AREA     | 190.27 SQ.M. | 2048.05 SQ.FT. |



FLOOR PLAN 1. All dimensions are in imperial and metric, and measured from finish to finish excluding construction tolerances. 2. All materials, dimensions, and drawings are approximate only. 3. Information is subject to change without notice, at developer's absolute discretion. 4. Actual area may vary from the stated area. 5. Drawings not to scale. 6. All images used are for illustrative purpose only and do not represent the actual size, features, specifications, fittings, and finishings. 7. The developer reserves the right to make revisions / alterations, at its absolute discretion, without any liability whatsoever.



DUBAI CREEK  
HARBOUR

BREEZE AT  
CREEK BEACH

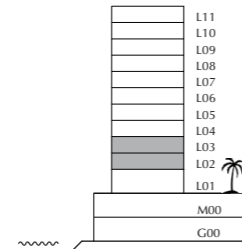
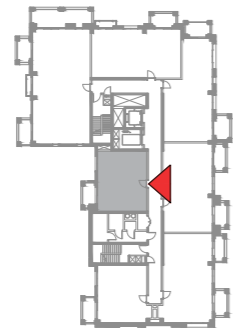
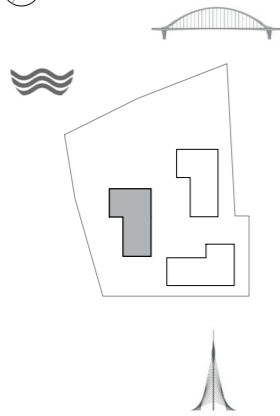
BUILDING 2

LEVEL 2,3

UNIT 01

1 BEDROOM

|                |             |               |
|----------------|-------------|---------------|
| APARTMENT AREA | 58.69 SQ.M. | 631.73 SQ.FT. |
| BALCONY AREA   | 6.58 SQ.M.  | 70.83 SQ.FT.  |
| TOTAL AREA     | 65.27 SQ.M. | 702.56 SQ.FT. |



FLOOR PLAN 1. All dimensions are in imperial and metric, and measured from finish to finish excluding construction tolerances. 2. All materials, dimensions, and drawings are approximate only. 3. Information is subject to change without notice, at developer's absolute discretion. 4. Actual area may vary from the stated area. 5. Drawings not to scale. 6. All images used are for illustrative purpose only and do not represent the actual size, features, specifications, fittings, and finishings. 7. The developer reserves the right to make revisions / alterations, at its absolute discretion, without any liability whatsoever.

DUBAI CREEK  
HARBOUR

BREEZE AT  
CREEK BEACH

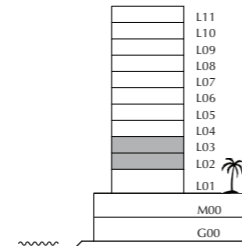
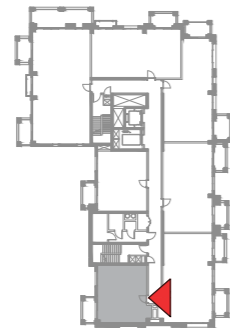
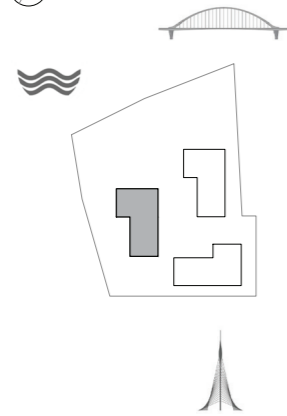
BUILDING 2

LEVEL 2,3

UNIT 02

1 BEDROOM

|                |             |               |
|----------------|-------------|---------------|
| APARTMENT AREA | 58.27 SQ.M. | 627.21 SQ.FT. |
| BALCONY AREA   | 6.96 SQ.M.  | 74.92 SQ.FT.  |
| TOTAL AREA     | 65.23 SQ.M. | 702.13 SQ.FT. |



FLOOR PLAN 1. All dimensions are in imperial and metric, and measured from finish to finish excluding construction tolerances. 2. All materials, dimensions, and drawings are approximate only. 3. Information is subject to change without notice, at developer's absolute discretion. 4. Actual area may vary from the stated area. 5. Drawings not to scale. 6. All images used are for illustrative purpose only and do not represent the actual size, features, specifications, fittings, and finishings. 7. The developer reserves the right to make revisions / alterations, at its absolute discretion, without any liability whatsoever.

DUBAI CREEK  
HARBOUR

BREEZE AT  
CREEK BEACH

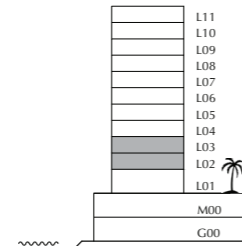
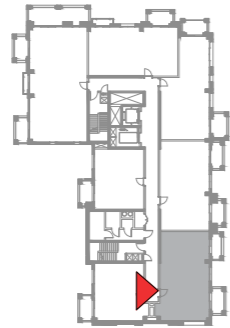
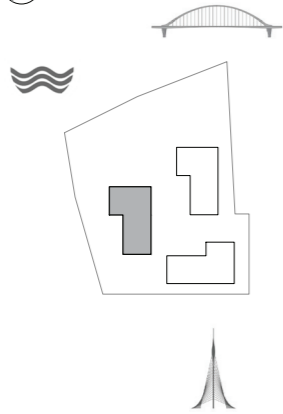
BUILDING 2

LEVEL 2,3

UNIT 03

2 BEDROOM

|                |              |                |
|----------------|--------------|----------------|
| APARTMENT AREA | 88.30 SQ.M.  | 950.45 SQ.FT.  |
| BALCONY AREA   | 12.66 SQ.M.  | 136.27 SQ.FT.  |
| TOTAL AREA     | 100.96 SQ.M. | 1086.72 SQ.FT. |



FLOOR PLAN 1. All dimensions are in imperial and metric, and measured from finish to finish excluding construction tolerances. 2. All materials, dimensions, and drawings are approximate only. 3. Information is subject to change without notice, at developer's absolute discretion. 4. Actual area may vary from the stated area. 5. Drawings not to scale. 6. All images used are for illustrative purpose only and do not represent the actual size, features, specifications, fittings, and finishings. 7. The developer reserves the right to make revisions / alterations, at its absolute discretion, without any liability whatsoever.



DUBAI CREEK  
HARBOUR

BREEZE AT  
CREEK BEACH

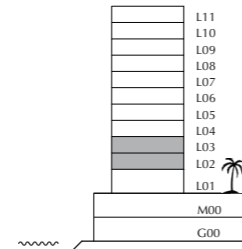
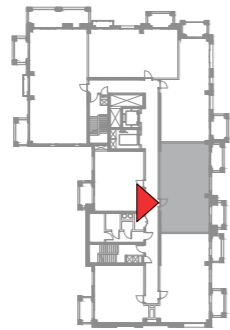
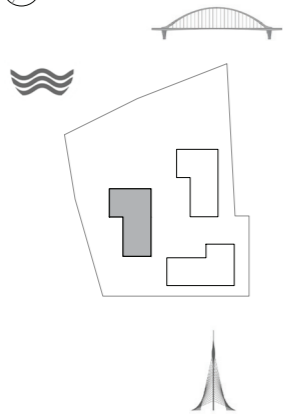
BUILDING 2

LEVEL 2,3

UNIT 04

2 BEDROOM

|                |             |                |
|----------------|-------------|----------------|
| APARTMENT AREA | 85.96 SQ.M. | 925.27 SQ.FT.  |
| BALCONY AREA   | 13.50 SQ.M. | 145.31 SQ.FT.  |
| TOTAL AREA     | 99.46 SQ.M. | 1070.58 SQ.FT. |



FLOOR PLAN 1. All dimensions are in imperial and metric, and measured from finish to finish excluding construction tolerances. 2. All materials, dimensions, and drawings are approximate only. 3. Information is subject to change without notice, at developer's absolute discretion. 4. Actual area may vary from the stated area. 5. Drawings not to scale. 6. All images used are for illustrative purpose only and do not represent the actual size, features, specifications, fittings, and finishings. 7. The developer reserves the right to make revisions / alterations, at its absolute discretion, without any liability whatsoever.



DUBAI CREEK  
HARBOUR

BREEZE AT  
CREEK BEACH

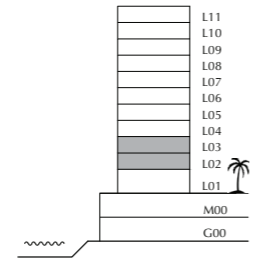
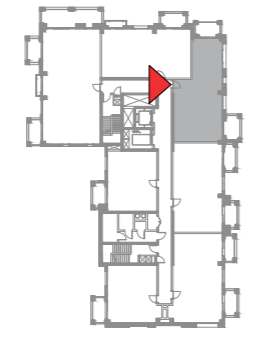
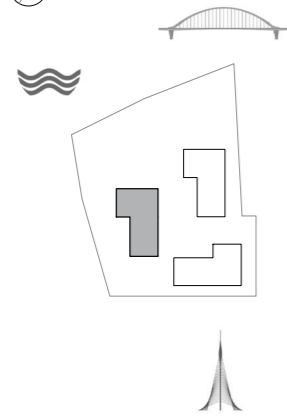
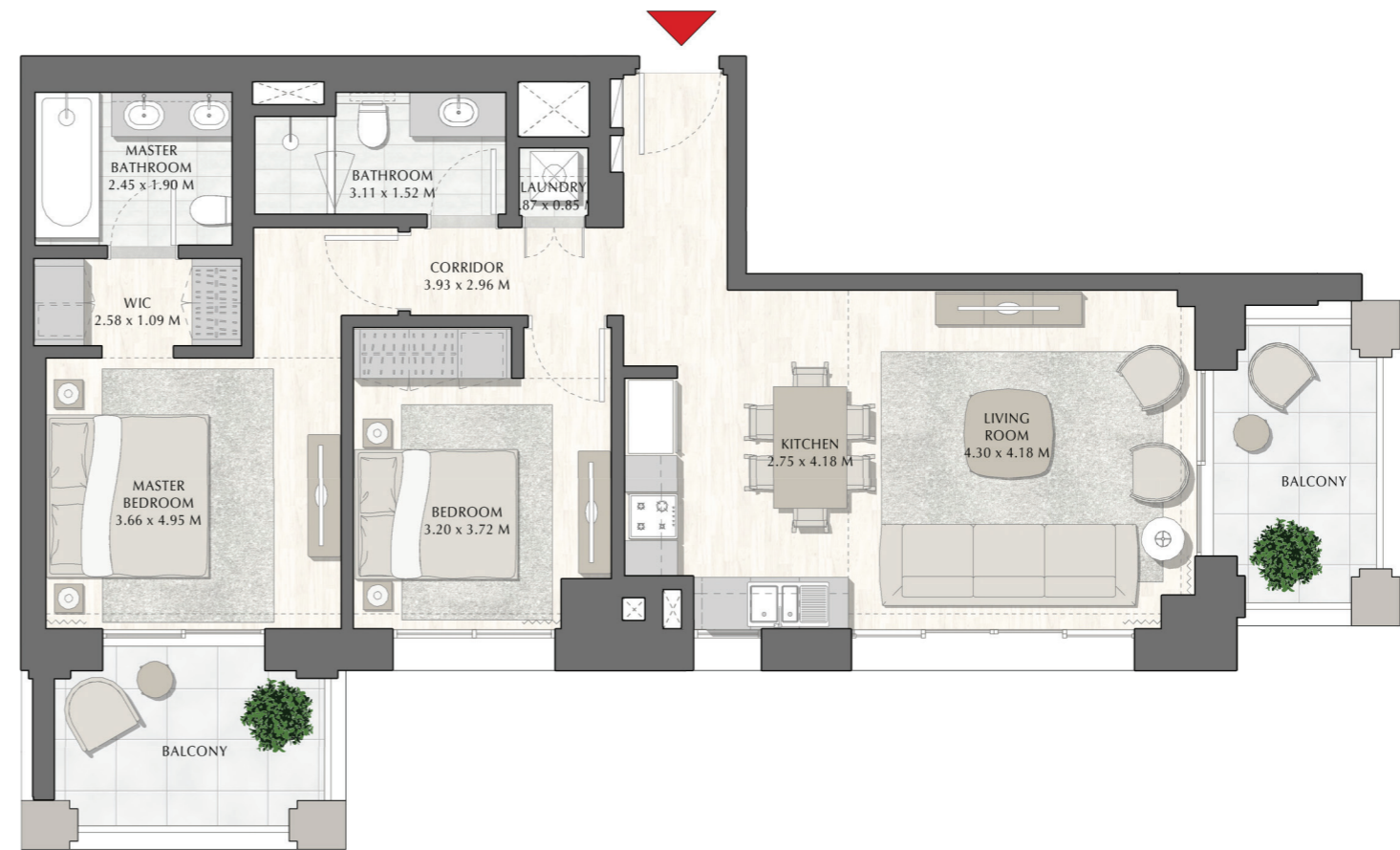
BUILDING 2

LEVEL 2,3

UNIT 05

2 BEDROOM

|                |              |                |
|----------------|--------------|----------------|
| APARTMENT AREA | 84.46 SQ.M.  | 909.12 SQ.FT.  |
| BALCONY AREA   | 15.95 SQ.M.  | 171.68 SQ.FT.  |
| TOTAL AREA     | 100.41 SQ.M. | 1080.80 SQ.FT. |



FLOOR PLAN 1. All dimensions are in imperial and metric, and measured from finish to finish excluding construction tolerances. 2. All materials, dimensions, and drawings are approximate only. 3. Information is subject to change without notice, at developer's absolute discretion. 4. Actual area may vary from the stated area. 5. Drawings not to scale. 6. All images used are for illustrative purpose only and do not represent the actual size, features, specifications, fittings, and finishings. 7. The developer reserves the right to make revisions / alterations, at its absolute discretion, without any liability whatsoever.



DUBAI CREEK  
HARBOUR

BREEZE AT  
CREEK BEACH

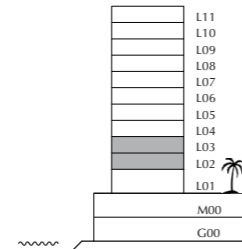
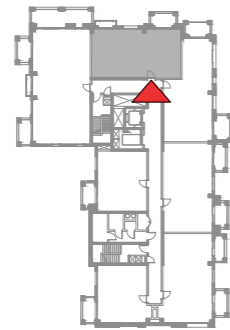
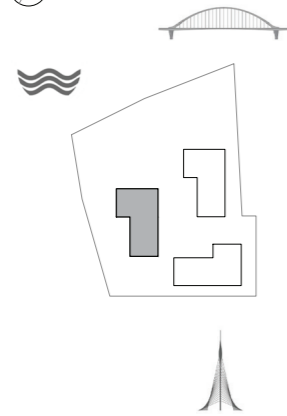
BUILDING 2

LEVEL 2,3

UNIT 06

2 BEDROOM

|                |             |                |
|----------------|-------------|----------------|
| APARTMENT AREA | 86.13 SQ.M. | 927.10 SQ.FT.  |
| BALCONY AREA   | 10.58 SQ.M. | 113.88 SQ.FT.  |
| TOTAL AREA     | 96.71 SQ.M. | 1040.98 SQ.FT. |



FLOOR PLAN 1. All dimensions are in imperial and metric, and measured from finish to finish excluding construction tolerances. 2. All materials, dimensions, and drawings are approximate only. 3. Information is subject to change without notice, at developer's absolute discretion. 4. Actual area may vary from the stated area. 5. Drawings not to scale. 6. All images used are for illustrative purpose only and do not represent the actual size, features, specifications, fittings, and finishings. 7. The developer reserves the right to make revisions / alterations, at its absolute discretion, without any liability whatsoever.

DUBAI CREEK  
HARBOUR

BREEZE AT  
CREEK BEACH

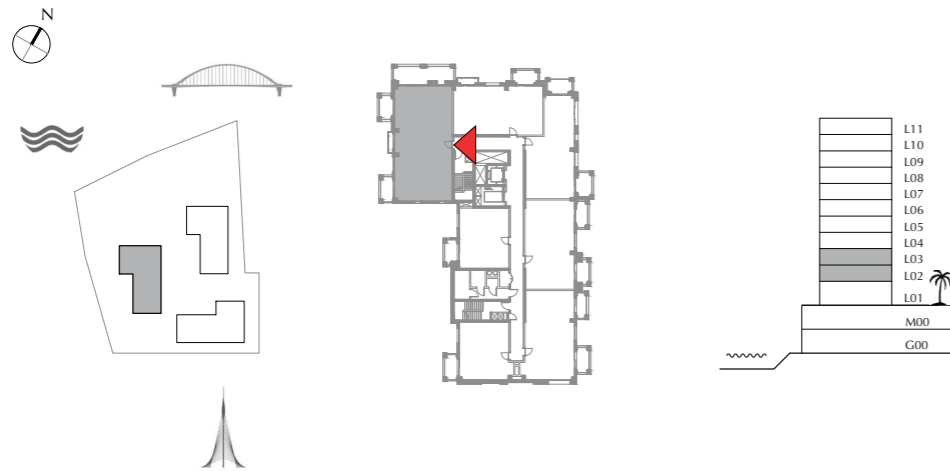
BUILDING 2

LEVEL 2,3

UNIT 07

3 BEDROOM

|                |              |                |
|----------------|--------------|----------------|
| APARTMENT AREA | 129.79 SQ.M. | 1397.05 SQ.FT. |
| BALCONY AREA   | 37.85 SQ.M.  | 407.41 SQ.FT.  |
| TOTAL AREA     | 167.64 SQ.M. | 1804.46 SQ.FT. |



FLOOR PLAN 1. All dimensions are in imperial and metric, and measured from finish to finish excluding construction tolerances. 2. All materials, dimensions, and drawings are approximate only. 3. Information is subject to change without notice, at developer's absolute discretion. 4. Actual area may vary from the stated area. 5. Drawings not to scale. 6. All images used are for illustrative purpose only and do not represent the actual size, features, specifications, fittings, and finishings. 7. The developer reserves the right to make revisions / alterations, at its absolute discretion, without any liability whatsoever.



DUBAI CREEK  
HARBOUR

BREEZE AT  
CREEK BEACH

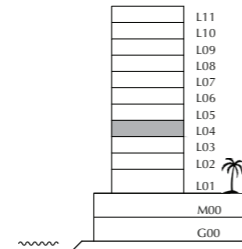
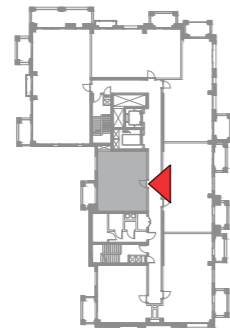
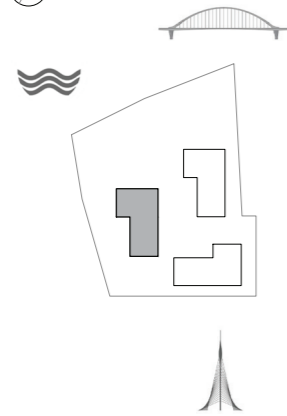
BUILDING 2

LEVEL 4

UNIT 01

1 BEDROOM

|                |             |               |
|----------------|-------------|---------------|
| APARTMENT AREA | 58.69 SQ.M. | 631.73 SQ.FT. |
| BALCONY AREA   | 6.58 SQ.M.  | 70.83 SQ.FT.  |
| TOTAL AREA     | 65.27 SQ.M. | 702.56 SQ.FT. |



FLOOR PLAN 1. All dimensions are in imperial and metric, and measured from finish to finish excluding construction tolerances. 2. All materials, dimensions, and drawings are approximate only. 3. Information is subject to change without notice, at developer's absolute discretion. 4. Actual area may vary from the stated area. 5. Drawings not to scale. 6. All images used are for illustrative purpose only and do not represent the actual size, features, specifications, fittings, and finishings. 7. The developer reserves the right to make revisions / alterations, at its absolute discretion, without any liability whatsoever.

DUBAI CREEK  
HARBOUR

BREEZE AT  
CREEK BEACH

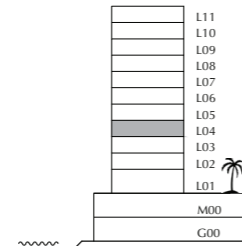
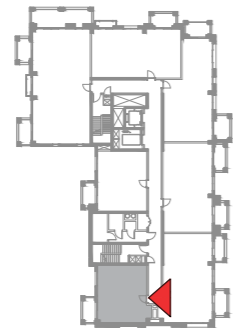
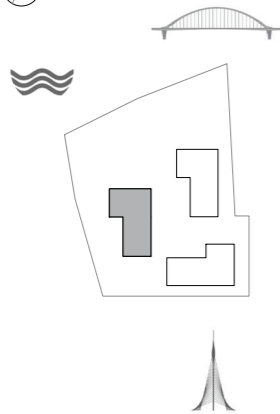
BUILDING 2

LEVEL 4

UNIT 02

1 BEDROOM

|                |             |               |
|----------------|-------------|---------------|
| APARTMENT AREA | 58.27 SQ.M. | 627.21 SQ.FT. |
| BALCONY AREA   | 6.96 SQ.M.  | 74.92 SQ.FT.  |
| TOTAL AREA     | 65.23 SQ.M. | 702.13 SQ.FT. |



FLOOR PLAN 1. All dimensions are in imperial and metric, and measured from finish to finish excluding construction tolerances. 2. All materials, dimensions, and drawings are approximate only. 3. Information is subject to change without notice, at developer's absolute discretion. 4. Actual area may vary from the stated area. 5. Drawings not to scale. 6. All images used are for illustrative purpose only and do not represent the actual size, features, specifications, fittings, and finishings. 7. The developer reserves the right to make revisions / alterations, at its absolute discretion, without any liability whatsoever.



DUBAI CREEK  
HARBOUR

BREEZE AT  
CREEK BEACH

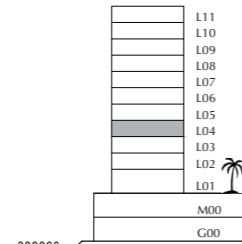
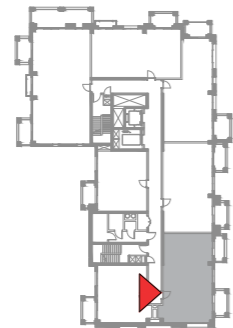
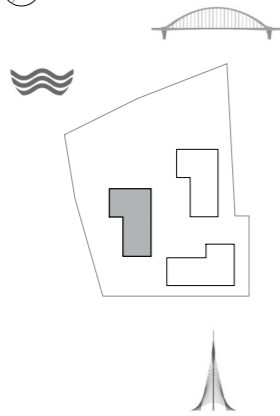
BUILDING 2

LEVEL 4

UNIT 03

2 BEDROOM

|                |             |                |
|----------------|-------------|----------------|
| APARTMENT AREA | 88.30 SQ.M. | 950.45 SQ.FT.  |
| BALCONY AREA   | 9.54 SQ.M.  | 102.69 SQ.FT.  |
| TOTAL AREA     | 97.84 SQ.M. | 1053.14 SQ.FT. |



FLOOR PLAN 1. All dimensions are in imperial and metric, and measured from finish to finish excluding construction tolerances. 2. All materials, dimensions, and drawings are approximate only. 3. Information is subject to change without notice, at developer's absolute discretion. 4. Actual area may vary from the stated area. 5. Drawings not to scale. 6. All images used are for illustrative purpose only and do not represent the actual size, features, specifications, fittings, and finishings. 7. The developer reserves the right to make revisions / alterations, at its absolute discretion, without any liability whatsoever.



DUBAI CREEK  
HARBOUR

BREEZE AT  
CREEK BEACH

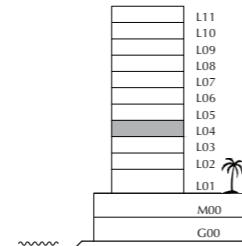
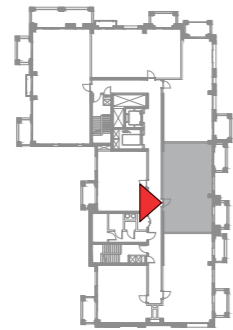
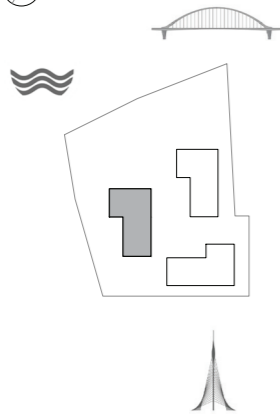
BUILDING 2

LEVEL 4

UNIT 04

2 BEDROOM

|                |             |                |
|----------------|-------------|----------------|
| APARTMENT AREA | 85.96 SQ.M. | 925.27 SQ.FT.  |
| BALCONY AREA   | 9.85 SQ.M.  | 106.02 SQ.FT.  |
| TOTAL AREA     | 95.81 SQ.M. | 1031.29 SQ.FT. |



FLOOR PLAN 1. All dimensions are in imperial and metric, and measured from finish to finish excluding construction tolerances. 2. All materials, dimensions, and drawings are approximate only. 3. Information is subject to change without notice, at developer's absolute discretion. 4. Actual area may vary from the stated area. 5. Drawings not to scale. 6. All images used are for illustrative purpose only and do not represent the actual size, features, specifications, fittings, and finishings. 7. The developer reserves the right to make revisions / alterations, at its absolute discretion, without any liability whatsoever.



DUBAI CREEK  
HARBOUR

BREEZE AT  
CREEK BEACH

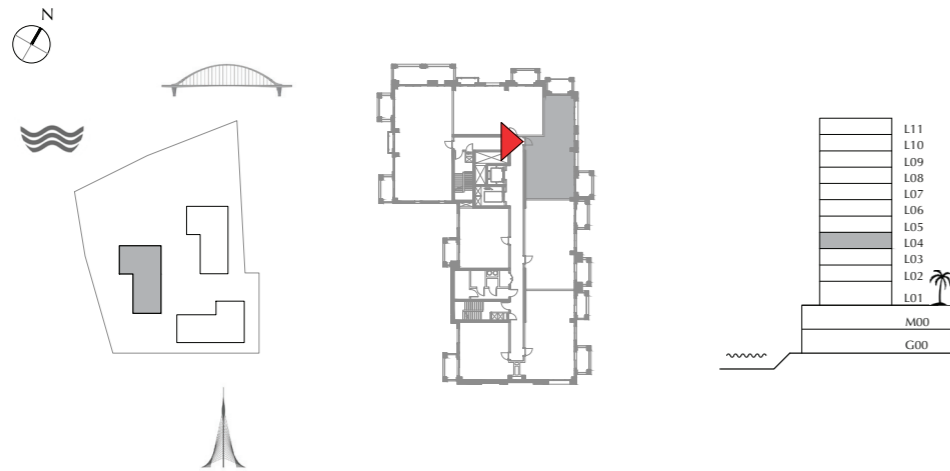
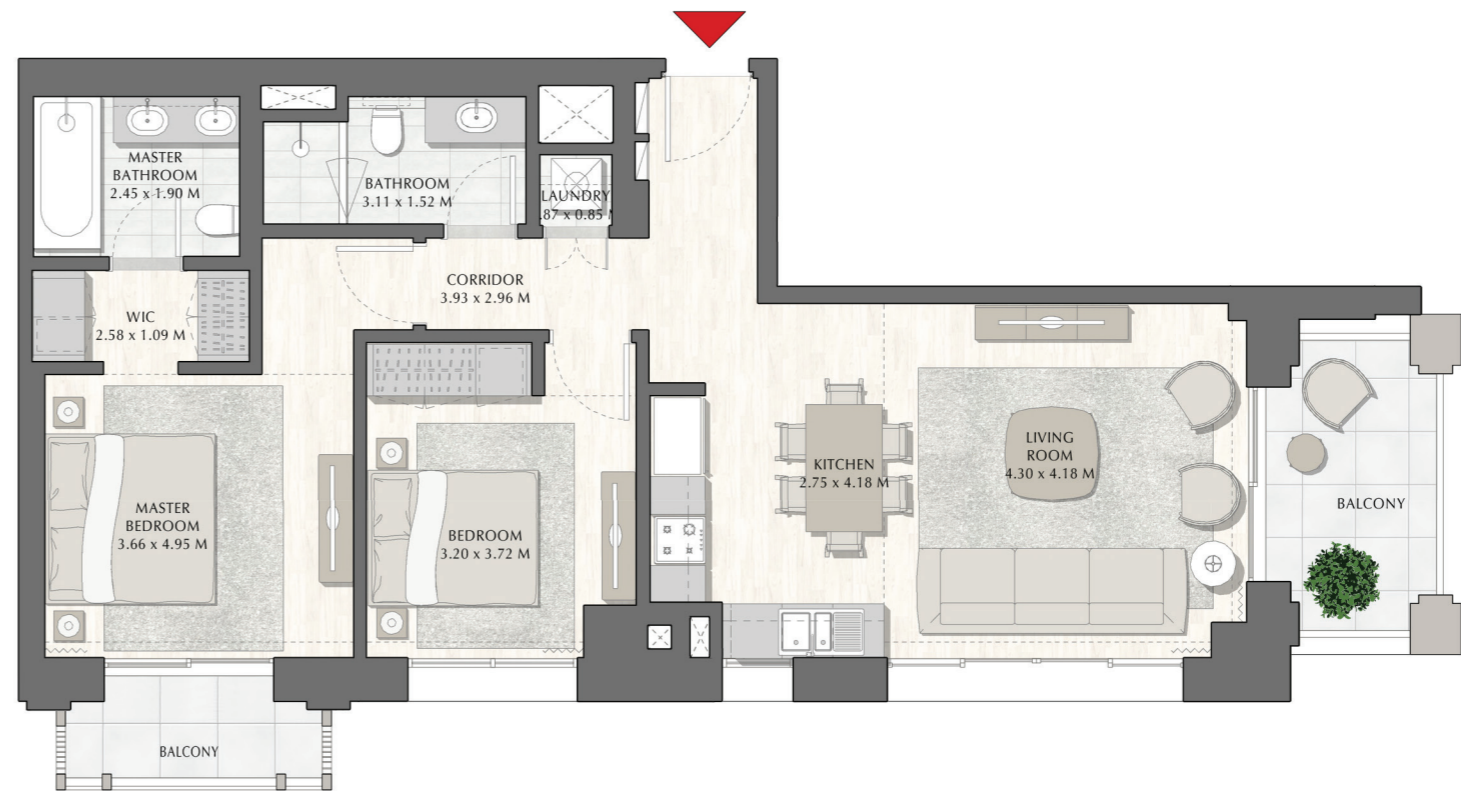
BUILDING 2

LEVEL 4

UNIT 05

2 BEDROOM

|                |              |                |
|----------------|--------------|----------------|
| APARTMENT AREA | 84.46 SQ.M.  | 909.12 SQ.FT.  |
| BALCONY AREA   | 16.43 SQ.M.  | 176.85 SQ.FT.  |
| TOTAL AREA     | 100.89 SQ.M. | 1085.97 SQ.FT. |



FLOOR PLAN 1. All dimensions are in imperial and metric, and measured from finish to finish excluding construction tolerances. 2. All materials, dimensions, and drawings are approximate only. 3. Information is subject to change without notice, at developer's absolute discretion. 4. Actual area may vary from the stated area. 5. Drawings not to scale. 6. All images used are for illustrative purpose only and do not represent the actual size, features, specifications, fittings, and finishings. 7. The developer reserves the right to make revisions / alterations, at its absolute discretion, without any liability whatsoever.



DUBAI CREEK  
HARBOUR

BREEZE AT  
CREEK BEACH

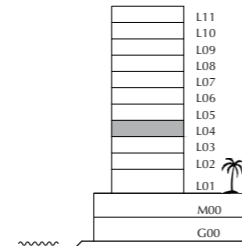
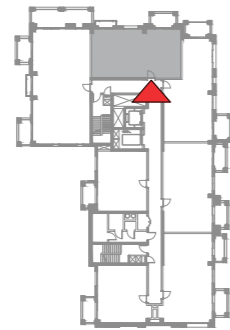
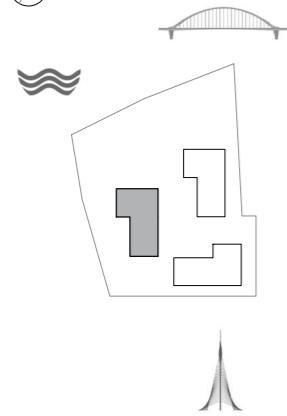
BUILDING 2

LEVEL 4

UNIT 06

2 BEDROOM

|                |             |                |
|----------------|-------------|----------------|
| APARTMENT AREA | 86.13 SQ.M. | 927.10 SQ.FT.  |
| BALCONY AREA   | 10.58 SQ.M. | 113.88 SQ.FT.  |
| TOTAL AREA     | 96.71 SQ.M. | 1040.98 SQ.FT. |



FLOOR PLAN 1. All dimensions are in imperial and metric, and measured from finish to finish excluding construction tolerances. 2. All materials, dimensions, and drawings are approximate only. 3. Information is subject to change without notice, at developer's absolute discretion. 4. Actual area may vary from the stated area. 5. Drawings not to scale. 6. All images used are for illustrative purpose only and do not represent the actual size, features, specifications, fittings, and finishings. 7. The developer reserves the right to make revisions / alterations, at its absolute discretion, without any liability whatsoever.



DUBAI CREEK  
HARBOUR

BREEZE AT  
CREEK BEACH

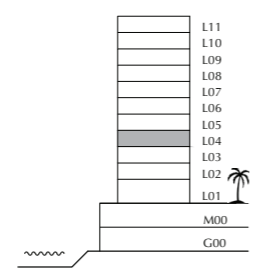
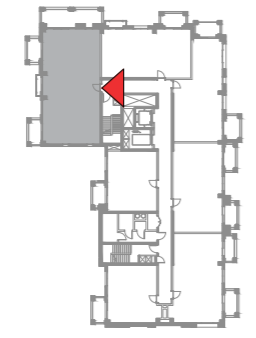
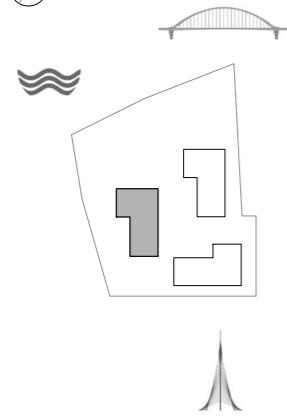
BUILDING 2

LEVEL 4

UNIT 07

3 BEDROOM

|                |              |                |
|----------------|--------------|----------------|
| APARTMENT AREA | 129.79 SQ.M. | 1397.05 SQ.FT. |
| BALCONY AREA   | 15.86 SQ.M.  | 170.72 SQ.FT.  |
| TOTAL AREA     | 145.65 SQ.M. | 1567.77 SQ.FT. |



FLOOR PLAN 1. All dimensions are in imperial and metric, and measured from finish to finish excluding construction tolerances. 2. All materials, dimensions, and drawings are approximate only. 3. Information is subject to change without notice, at developer's absolute discretion. 4. Actual area may vary from the stated area. 5. Drawings not to scale. 6. All images used are for illustrative purpose only and do not represent the actual size, features, specifications, fittings, and finishings. 7. The developer reserves the right to make revisions / alterations, at its absolute discretion, without any liability whatsoever.



DUBAI CREEK  
HARBOUR

BREEZE AT  
CREEK BEACH

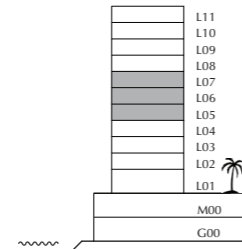
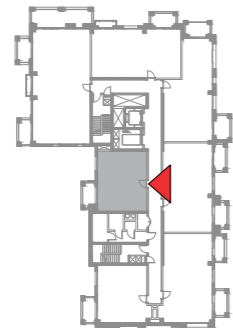
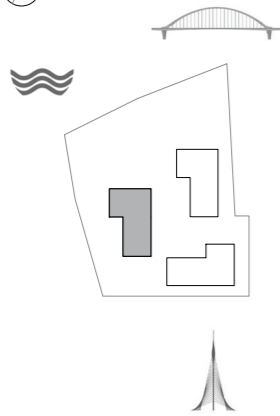
BUILDING 2

LEVEL 5,6,7

UNIT 01

1 BEDROOM

|                |             |               |
|----------------|-------------|---------------|
| APARTMENT AREA | 58.69 SQ.M. | 631.73 SQ.FT. |
| BALCONY AREA   | 6.58 SQ.M.  | 70.83 SQ.FT.  |
| TOTAL AREA     | 65.27 SQ.M. | 702.56 SQ.FT. |



FLOOR PLAN 1. All dimensions are in imperial and metric, and measured from finish to finish excluding construction tolerances. 2. All materials, dimensions, and drawings are approximate only. 3. Information is subject to change without notice, at developer's absolute discretion. 4. Actual area may vary from the stated area. 5. Drawings not to scale. 6. All images used are for illustrative purpose only and do not represent the actual size, features, specifications, fittings, and finishings. 7. The developer reserves the right to make revisions / alterations, at its absolute discretion, without any liability whatsoever.

DUBAI CREEK  
HARBOUR

BREEZE AT  
CREEK BEACH

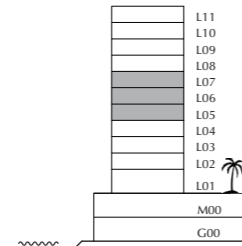
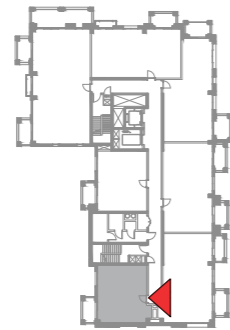
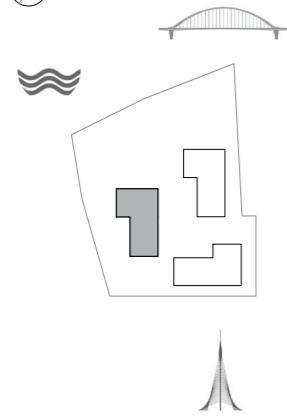
BUILDING 2

LEVEL 5,6,7

UNIT 02

1 BEDROOM

|                |             |               |
|----------------|-------------|---------------|
| APARTMENT AREA | 58.27 SQ.M. | 627.21 SQ.FT. |
| BALCONY AREA   | 6.96 SQ.M.  | 74.92 SQ.FT.  |
| TOTAL AREA     | 65.23 SQ.M. | 702.13 SQ.FT. |



FLOOR PLAN 1. All dimensions are in imperial and metric, and measured from finish to finish excluding construction tolerances. 2. All materials, dimensions, and drawings are approximate only. 3. Information is subject to change without notice, at developer's absolute discretion. 4. Actual area may vary from the stated area. 5. Drawings not to scale. 6. All images used are for illustrative purpose only and do not represent the actual size, features, specifications, fittings, and finishings. 7. The developer reserves the right to make revisions / alterations, at its absolute discretion, without any liability whatsoever.

DUBAI CREEK  
HARBOUR

BREEZE AT  
CREEK BEACH

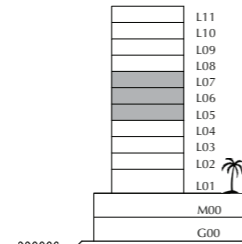
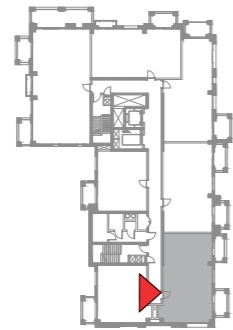
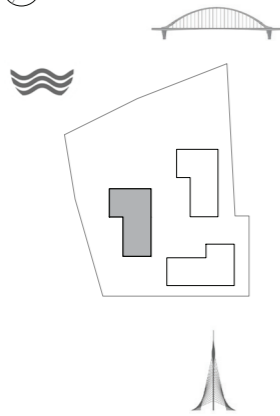
BUILDING 2

LEVEL 5,6,7

UNIT 03

2 BEDROOM

|                |             |                |
|----------------|-------------|----------------|
| APARTMENT AREA | 88.30 SQ.M. | 950.45 SQ.FT.  |
| BALCONY AREA   | 9.54 SQ.M.  | 102.69 SQ.FT.  |
| TOTAL AREA     | 97.84 SQ.M. | 1053.14 SQ.FT. |



FLOOR PLAN 1. All dimensions are in imperial and metric, and measured from finish to finish excluding construction tolerances. 2. All materials, dimensions, and drawings are approximate only. 3. Information is subject to change without notice, at developer's absolute discretion. 4. Actual area may vary from the stated area. 5. Drawings not to scale. 6. All images used are for illustrative purpose only and do not represent the actual size, features, specifications, fittings, and finishings. 7. The developer reserves the right to make revisions / alterations, at its absolute discretion, without any liability whatsoever.



DUBAI CREEK  
HARBOUR

BREEZE AT  
CREEK BEACH

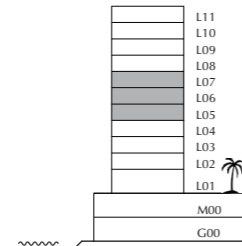
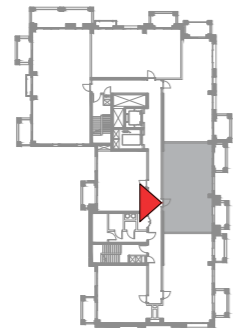
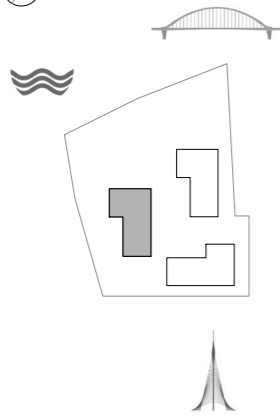
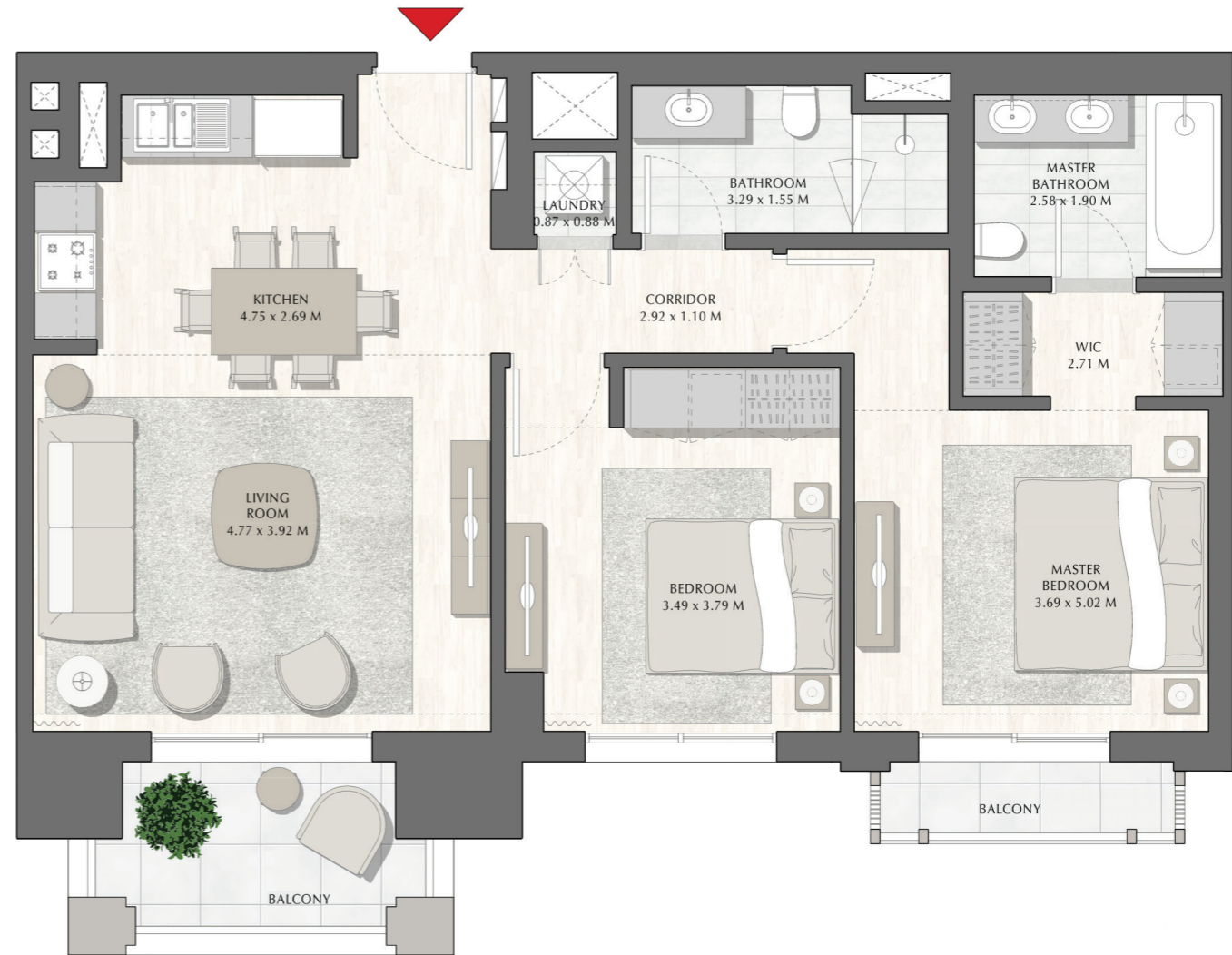
BUILDING 2

LEVEL 5,6,7

UNIT 04

2 BEDROOM

|                |             |                |
|----------------|-------------|----------------|
| APARTMENT AREA | 85.96 SQ.M. | 925.27 SQ.FT.  |
| BALCONY AREA   | 9.85 SQ.M.  | 106.02 SQ.FT.  |
| TOTAL AREA     | 95.81 SQ.M. | 1031.29 SQ.FT. |



FLOOR PLAN 1. All dimensions are in imperial and metric, and measured from finish to finish excluding construction tolerances. 2. All materials, dimensions, and drawings are approximate only. 3. Information is subject to change without notice, at developer's absolute discretion. 4. Actual area may vary from the stated area. 5. Drawings not to scale. 6. All images used are for illustrative purpose only and do not represent the actual size, features, specifications, fittings, and finishings. 7. The developer reserves the right to make revisions / alterations, at its absolute discretion, without any liability whatsoever.



DUBAI CREEK  
HARBOUR

BREEZE AT  
CREEK BEACH

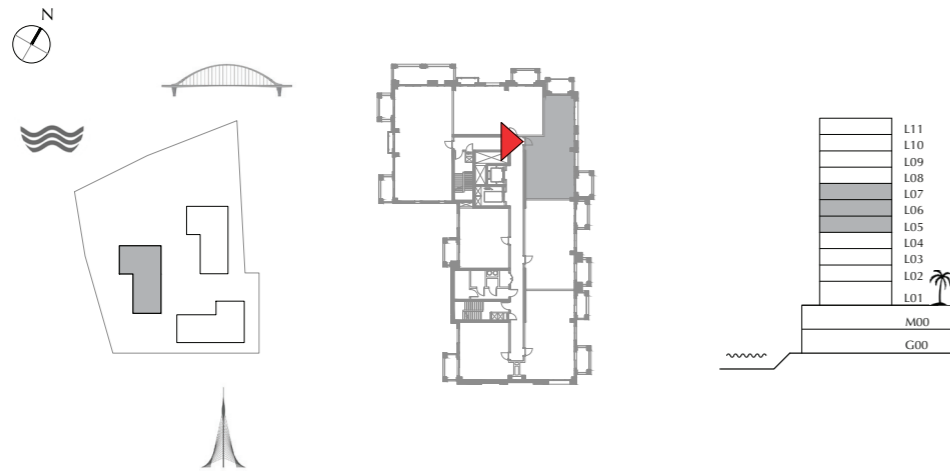
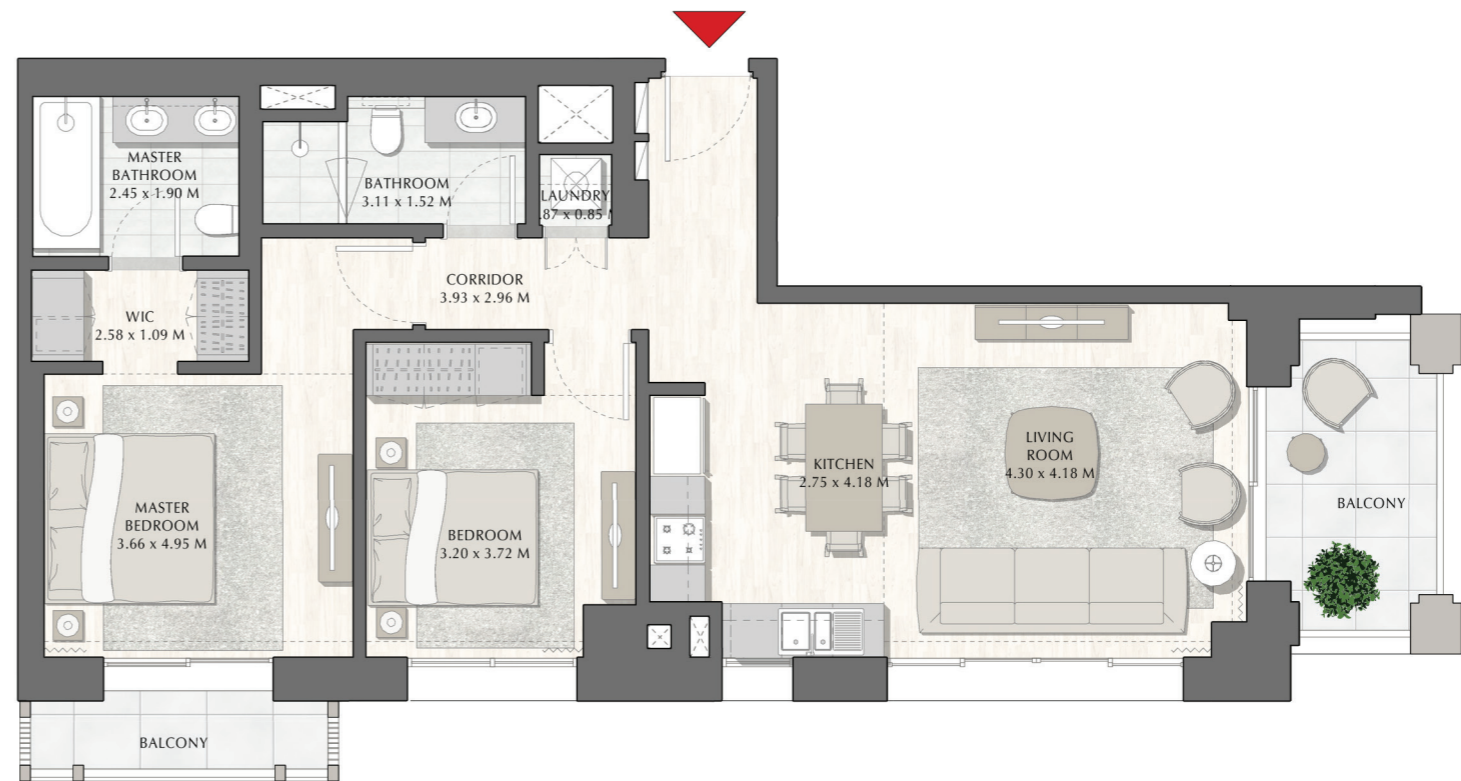
BUILDING 2

LEVEL 5,6,7

UNIT 05

2 BEDROOM

|                |             |                |
|----------------|-------------|----------------|
| APARTMENT AREA | 84.46 SQ.M. | 909.12 SQ.FT.  |
| BALCONY AREA   | 11.13 SQ.M. | 119.80 SQ.FT.  |
| TOTAL AREA     | 95.59 SQ.M. | 1028.92 SQ.FT. |



FLOOR PLAN 1. All dimensions are in imperial and metric, and measured from finish to finish excluding construction tolerances. 2. All materials, dimensions, and drawings are approximate only. 3. Information is subject to change without notice, at developer's absolute discretion. 4. Actual area may vary from the stated area. 5. Drawings not to scale. 6. All images used are for illustrative purpose only and do not represent the actual size, features, specifications, fittings, and furnishings. 7. The developer reserves the right to make revisions / alterations, at its absolute discretion, without any liability whatsoever.



DUBAI CREEK  
HARBOUR

BREEZE AT  
CREEK BEACH

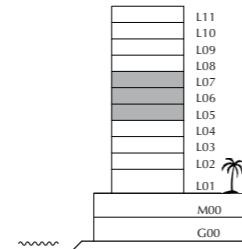
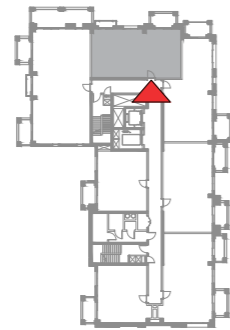
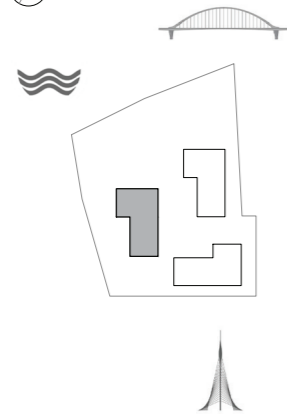
BUILDING 2

LEVEL 5,6,7

UNIT 06

2 BEDROOM

|                |             |                |
|----------------|-------------|----------------|
| APARTMENT AREA | 86.13 SQ.M. | 927.10 SQ.FT.  |
| BALCONY AREA   | 10.58 SQ.M. | 113.88 SQ.FT.  |
| TOTAL AREA     | 96.71 SQ.M. | 1040.98 SQ.FT. |



FLOOR PLAN 1. All dimensions are in imperial and metric, and measured from finish to finish excluding construction tolerances. 2. All materials, dimensions, and drawings are approximate only. 3. Information is subject to change without notice, at developer's absolute discretion. 4. Actual area may vary from the stated area. 5. Drawings not to scale. 6. All images used are for illustrative purpose only and do not represent the actual size, features, specifications, fittings, and finishings. 7. The developer reserves the right to make revisions / alterations, at its absolute discretion, without any liability whatsoever.



DUBAI CREEK  
HARBOUR

BREEZE AT  
CREEK BEACH

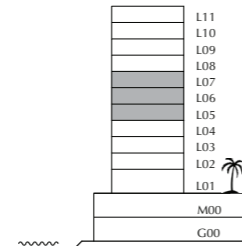
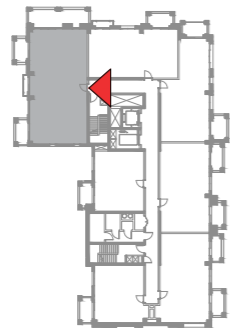
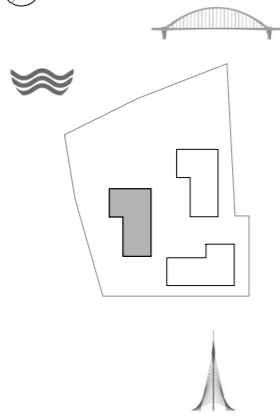
BUILDING 2

LEVEL 5,6,7

UNIT 07

3 BEDROOM

|                |              |                |
|----------------|--------------|----------------|
| APARTMENT AREA | 129.79 SQ.M. | 1397.05 SQ.FT. |
| BALCONY AREA   | 15.86 SQ.M.  | 170.72 SQ.FT.  |
| TOTAL AREA     | 145.65 SQ.M. | 1567.77 SQ.FT. |



FLOOR PLAN 1. All dimensions are in imperial and metric, and measured from finish to finish excluding construction tolerances. 2. All materials, dimensions, and drawings are approximate only. 3. Information is subject to change without notice, at developer's absolute discretion. 4. Actual area may vary from the stated area. 5. Drawings not to scale. 6. All images used are for illustrative purpose only and do not represent the actual size, features, specifications, fittings, and finishings. 7. The developer reserves the right to make revisions / alterations, at its absolute discretion, without any liability whatsoever.



DUBAI CREEK  
HARBOUR

BREEZE AT  
CREEK BEACH

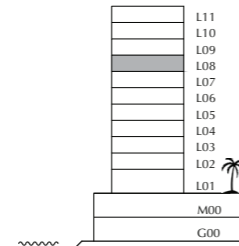
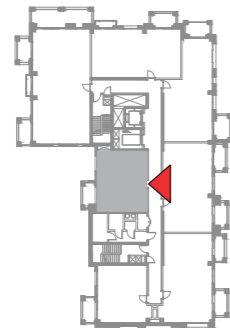
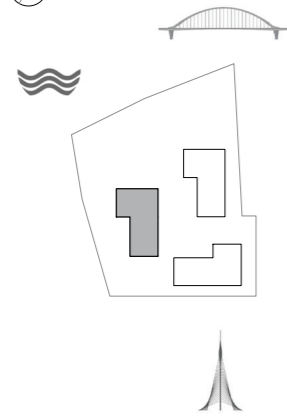
BUILDING 2

LEVEL 8

UNIT 801

1 BEDROOM

|                |             |               |
|----------------|-------------|---------------|
| APARTMENT AREA | 58.58 SQ.M. | 630.55 SQ.FT. |
| BALCONY AREA   | 7.31 SQ.M.  | 78.68 SQ.FT.  |
| TOTAL AREA     | 65.89 SQ.M. | 709.23 SQ.FT. |



FLOOR PLAN 1. All dimensions are in imperial and metric, and measured from finish to finish excluding construction tolerances. 2. All materials, dimensions, and drawings are approximate only. 3. Information is subject to change without notice, at developer's absolute discretion. 4. Actual area may vary from the stated area. 5. Drawings not to scale. 6. All images used are for illustrative purpose only and do not represent the actual size, features, specifications, fittings, and furnishings. 7. The developer reserves the right to make revisions / alterations, at its absolute discretion, without any liability whatsoever.

DUBAI CREEK  
HARBOUR

BREEZE AT  
CREEK BEACH

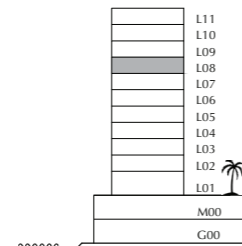
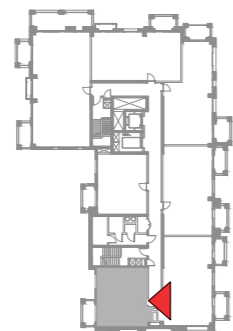
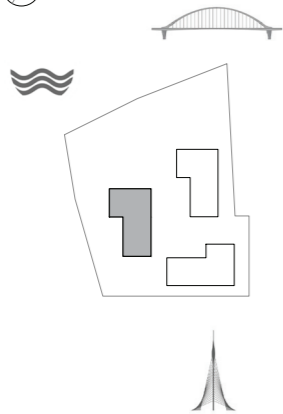
BUILDING 2

LEVEL 8

UNIT 802

1 BEDROOM

|                |             |               |
|----------------|-------------|---------------|
| APARTMENT AREA | 58.27 SQ.M. | 627.21 SQ.FT. |
| BALCONY AREA   | 7.31 SQ.M.  | 78.68 SQ.FT.  |
| TOTAL AREA     | 65.58 SQ.M. | 705.89 SQ.FT. |



FLOOR PLAN 1. All dimensions are in imperial and metric, and measured from finish to finish excluding construction tolerances. 2. All materials, dimensions, and drawings are approximate only. 3. Information is subject to change without notice, at developer's absolute discretion. 4. Actual area may vary from the stated area. 5. Drawings not to scale. 6. All images used are for illustrative purpose only and do not represent the actual size, features, specifications, fittings, and finishings. 7. The developer reserves the right to make revisions / alterations, at its absolute discretion, without any liability whatsoever.

DUBAI CREEK  
HARBOUR

BREEZE AT  
CREEK BEACH

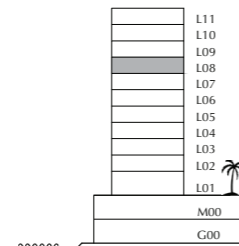
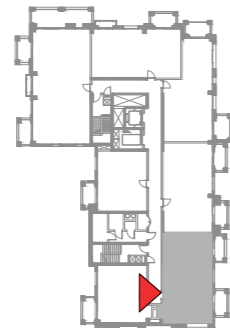
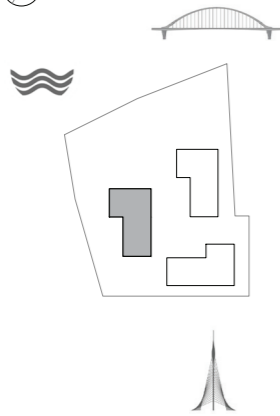
BUILDING 2

LEVEL 8

UNIT 803

2 BEDROOM

|                |             |                |
|----------------|-------------|----------------|
| APARTMENT AREA | 88.30 SQ.M. | 950.45 SQ.FT.  |
| BALCONY AREA   | 9.95 SQ.M.  | 107.10 SQ.FT.  |
| TOTAL AREA     | 98.25 SQ.M. | 1057.55 SQ.FT. |



FLOOR PLAN 1. All dimensions are in imperial and metric, and measured from finish to finish excluding construction tolerances. 2. All materials, dimensions, and drawings are approximate only. 3. Information is subject to change without notice, at developer's absolute discretion. 4. Actual area may vary from the stated area. 5. Drawings not to scale. 6. All images used are for illustrative purpose only and do not represent the actual size, features, specifications, fittings, and finishings. 7. The developer reserves the right to make revisions / alterations, at its absolute discretion, without any liability whatsoever.



DUBAI CREEK  
HARBOUR

BREEZE AT  
CREEK BEACH

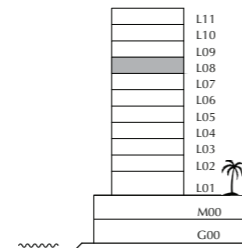
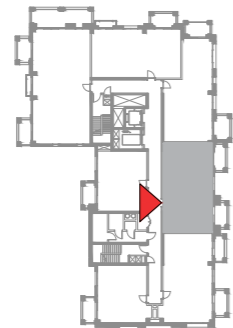
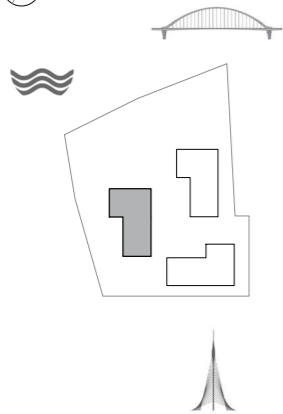
BUILDING 2

LEVEL 8

UNIT 804

2 BEDROOM

|                |             |                |
|----------------|-------------|----------------|
| APARTMENT AREA | 85.96 SQ.M. | 925.27 SQ.FT.  |
| BALCONY AREA   | 9.85 SQ.M.  | 106.02 SQ.FT.  |
| TOTAL AREA     | 95.81 SQ.M. | 1031.29 SQ.FT. |



FLOOR PLAN 1. All dimensions are in imperial and metric, and measured from finish to finish excluding construction tolerances. 2. All materials, dimensions, and drawings are approximate only. 3. Information is subject to change without notice, at developer's absolute discretion. 4. Actual area may vary from the stated area. 5. Drawings not to scale. 6. All images used are for illustrative purpose only and do not represent the actual size, features, specifications, fittings, and finishings. 7. The developer reserves the right to make revisions / alterations, at its absolute discretion, without any liability whatsoever.



**DUBAI CREEK**  
HARBOUR

**BREEZE AT  
CREEK BEACH**

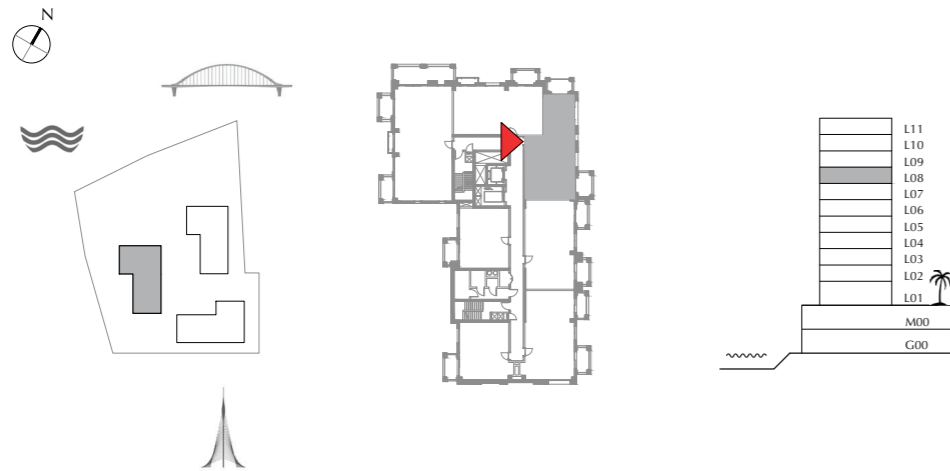
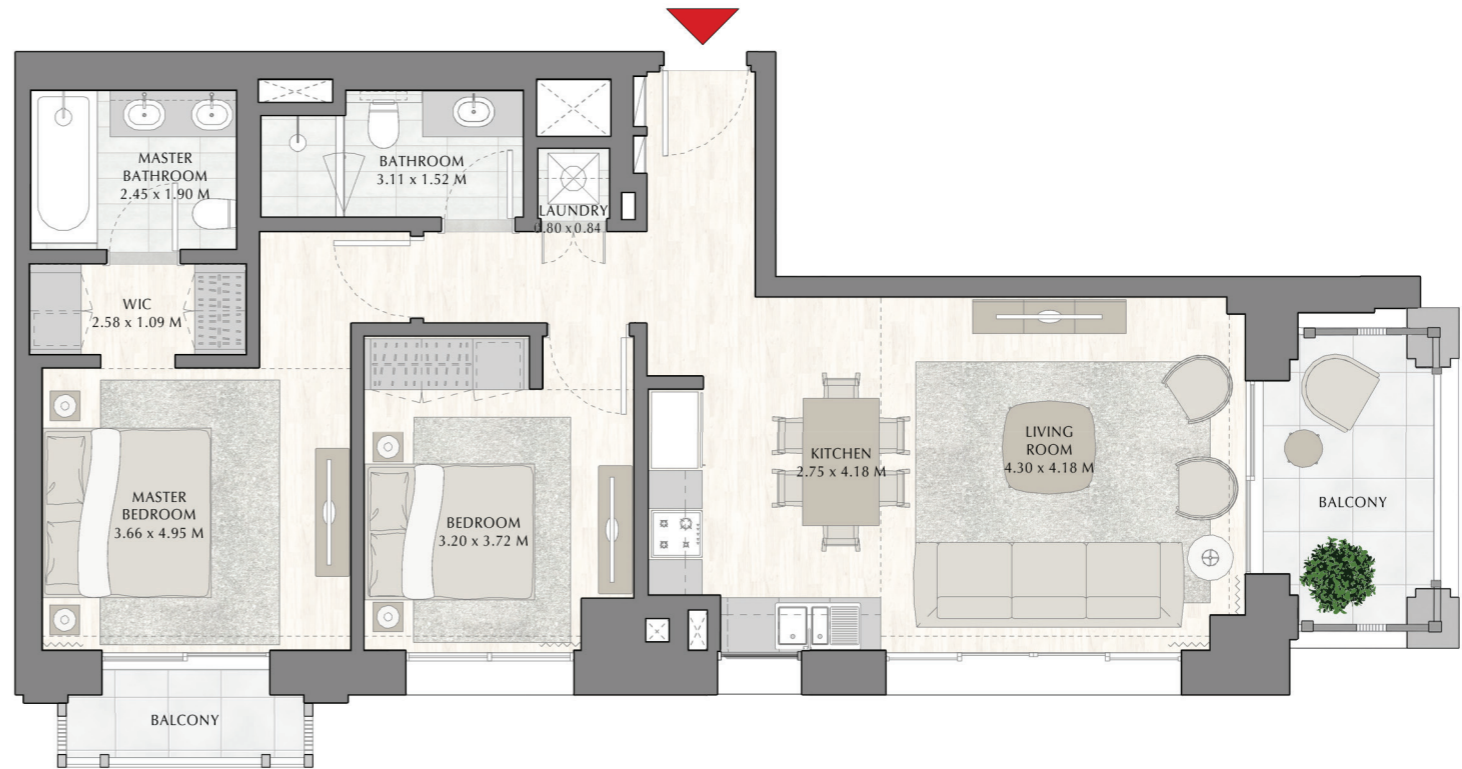
BUILDING 2

LEVEL 8

UNIT 805

**2 BEDROOM**

|                |             |                |
|----------------|-------------|----------------|
| APARTMENT AREA | 84.46 SQ.M. | 909.12 SQ.FT.  |
| BALCONY AREA   | 11.60 SQ.M. | 124.86 SQ.FT.  |
| TOTAL AREA     | 96.06 SQ.M. | 1033.98 SQ.FT. |



FLOOR PLAN 1. All dimensions are in imperial and metric, and measured from finish to finish excluding construction tolerances. 2. All materials, dimensions, and drawings are approximate only. 3. Information is subject to change without notice, at developer's absolute discretion. 4. Actual area may vary from the stated area. 5. Drawings not to scale. 6. All images used are for illustrative purpose only and do not represent the actual size, features, specifications, fittings, and finishings. 7. The developer reserves the right to make revisions / alterations, at its absolute discretion, without any liability whatsoever.



DUBAI CREEK  
HARBOUR

BREEZE AT  
CREEK BEACH

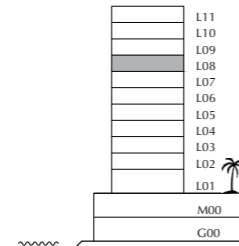
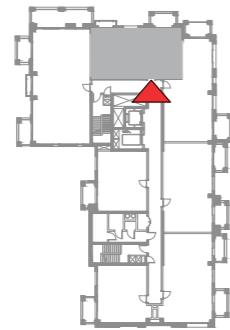
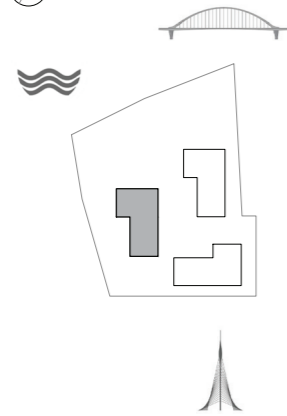
BUILDING 2

LEVEL 8

UNIT 806

2 BEDROOM

|                |             |                |
|----------------|-------------|----------------|
| APARTMENT AREA | 86.13 SQ.M. | 927.10 SQ.FT.  |
| BALCONY AREA   | 10.58 SQ.M. | 113.88 SQ.FT.  |
| TOTAL AREA     | 96.71 SQ.M. | 1040.98 SQ.FT. |



FLOOR PLAN 1. All dimensions are in imperial and metric, and measured from finish to finish excluding construction tolerances. 2. All materials, dimensions, and drawings are approximate only. 3. Information is subject to change without notice, at developer's absolute discretion. 4. Actual area may vary from the stated area. 5. Drawings not to scale. 6. All images used are for illustrative purpose only and do not represent the actual size, features, specifications, fittings, and finishings. 7. The developer reserves the right to make revisions / alterations, at its absolute discretion, without any liability whatsoever.

DUBAI CREEK  
HARBOUR

BREEZE AT  
CREEK BEACH

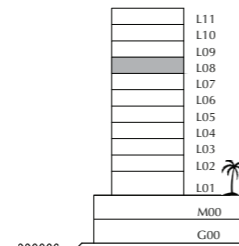
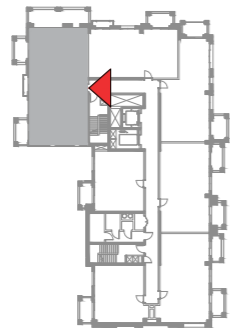
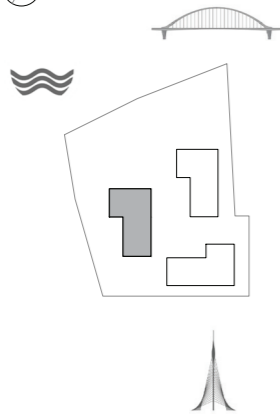
BUILDING 2

LEVEL 8

UNIT 807

3 BEDROOM

|                |              |                |
|----------------|--------------|----------------|
| APARTMENT AREA | 129.79 SQ.M. | 1397.05 SQ.FT. |
| BALCONY AREA   | 16.58 SQ.M.  | 178.47 SQ.FT.  |
| TOTAL AREA     | 146.37 SQ.M. | 1575.52 SQ.FT. |



FLOOR PLAN 1. All dimensions are in imperial and metric, and measured from finish to finish excluding construction tolerances. 2. All materials, dimensions, and drawings are approximate only. 3. Information is subject to change without notice, at developer's absolute discretion. 4. Actual area may vary from the stated area. 5. Drawings not to scale. 6. All images used are for illustrative purpose only and do not represent the actual size, features, specifications, fittings, and finishings. 7. The developer reserves the right to make revisions / alterations, at its absolute discretion, without any liability whatsoever.



DUBAI CREEK  
HARBOUR

BREEZE AT  
CREEK BEACH

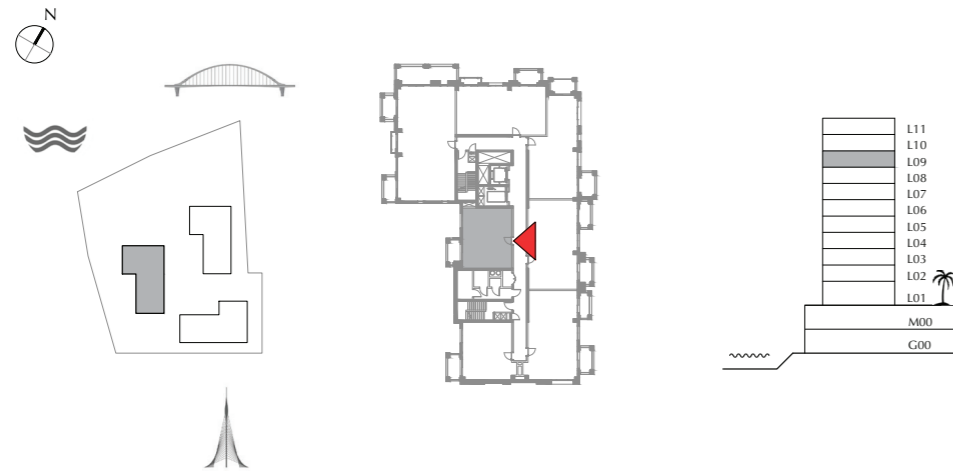
BUILDING 2

LEVEL 9

UNIT 01

1 BEDROOM

|                |             |               |
|----------------|-------------|---------------|
| APARTMENT AREA | 58.58 SQ.M. | 630.55 SQ.FT. |
| BALCONY AREA   | 7.31 SQ.M.  | 78.68 SQ.FT.  |
| TOTAL AREA     | 65.89 SQ.M. | 709.23 SQ.FT. |



FLOOR PLAN 1. All dimensions are in imperial and metric, and measured from finish to finish excluding construction tolerances. 2. All materials, dimensions, and drawings are approximate only. 3. Information is subject to change without notice, at developer's absolute discretion. 4. Actual area may vary from the stated area. 5. Drawings not to scale. 6. All images used are for illustrative purpose only and do not represent the actual size, features, specifications, fittings, and furnishings. 7. The developer reserves the right to make revisions / alterations, at its absolute discretion, without any liability whatsoever.



DUBAI CREEK  
HARBOUR

BREEZE AT  
CREEK BEACH

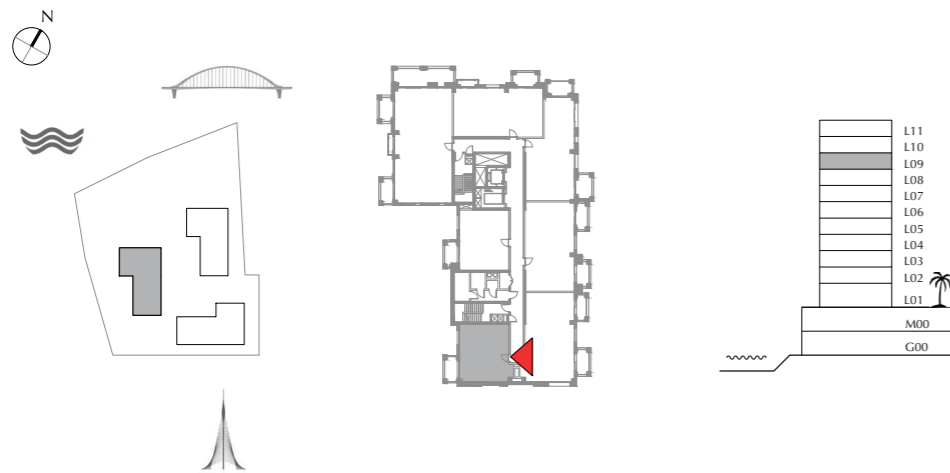
BUILDING 2

LEVEL 9

UNIT 02

1 BEDROOM

|                |             |               |
|----------------|-------------|---------------|
| APARTMENT AREA | 58.27 SQ.M. | 627.21 SQ.FT. |
| BALCONY AREA   | 7.31 SQ.M.  | 78.68 SQ.FT.  |
| TOTAL AREA     | 65.58 SQ.M. | 705.89 SQ.FT. |



FLOOR PLAN 1. All dimensions are in imperial and metric, and measured from finish to finish excluding construction tolerances. 2. All materials, dimensions, and drawings are approximate only. 3. Information is subject to change without notice, at developer's absolute discretion. 4. Actual area may vary from the stated area. 5. Drawings not to scale. 6. All images used are for illustrative purpose only and do not represent the actual size, features, specifications, fittings, and finishings. 7. The developer reserves the right to make revisions / alterations, at its absolute discretion, without any liability whatsoever.



DUBAI CREEK  
HARBOUR

BREEZE AT  
CREEK BEACH

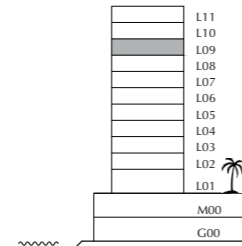
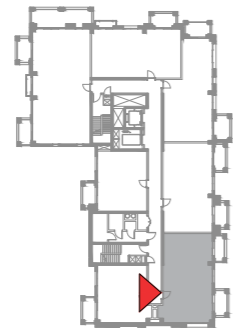
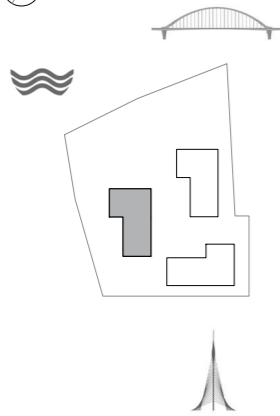
BUILDING 2

LEVEL 9

UNIT 03

2 BEDROOM

|                |             |                |
|----------------|-------------|----------------|
| APARTMENT AREA | 88.3 SQ.M.  | 950.45 SQ.FT.  |
| BALCONY AREA   | 9.95 SQ.M.  | 107.10 SQ.FT.  |
| TOTAL AREA     | 98.25 SQ.M. | 1057.55 SQ.FT. |



FLOOR PLAN 1. All dimensions are in imperial and metric, and measured from finish to finish excluding construction tolerances. 2. All materials, dimensions, and drawings are approximate only. 3. Information is subject to change without notice, at developer's absolute discretion. 4. Actual area may vary from the stated area. 5. Drawings not to scale. 6. All images used are for illustrative purpose only and do not represent the actual size, features, specifications, fittings, and finishings. 7. The developer reserves the right to make revisions / alterations, at its absolute discretion, without any liability whatsoever.



DUBAI CREEK  
HARBOUR

BREEZE AT  
CREEK BEACH

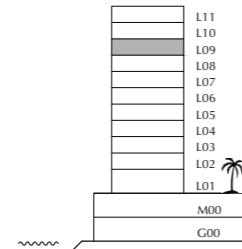
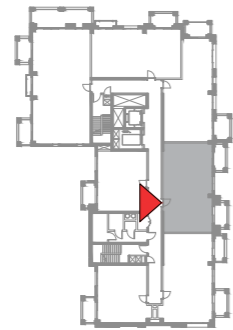
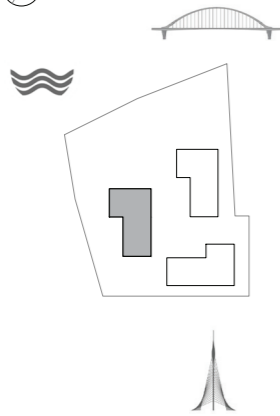
BUILDING 2

LEVEL 9

UNIT 04

2 BEDROOM

|                |             |                |
|----------------|-------------|----------------|
| APARTMENT AREA | 85.96 SQ.M. | 925.27 SQ.FT.  |
| BALCONY AREA   | 10.21 SQ.M. | 109.90 SQ.FT.  |
| TOTAL AREA     | 96.17 SQ.M. | 1035.17 SQ.FT. |



FLOOR PLAN 1. All dimensions are in imperial and metric, and measured from finish to finish excluding construction tolerances. 2. All materials, dimensions, and drawings are approximate only. 3. Information is subject to change without notice, at developer's absolute discretion. 4. Actual area may vary from the stated area. 5. Drawings not to scale. 6. All images used are for illustrative purpose only and do not represent the actual size, features, specifications, fittings, and finishings. 7. The developer reserves the right to make revisions / alterations, at its absolute discretion, without any liability whatsoever.



DUBAI CREEK  
HARBOUR

BREEZE AT  
CREEK BEACH

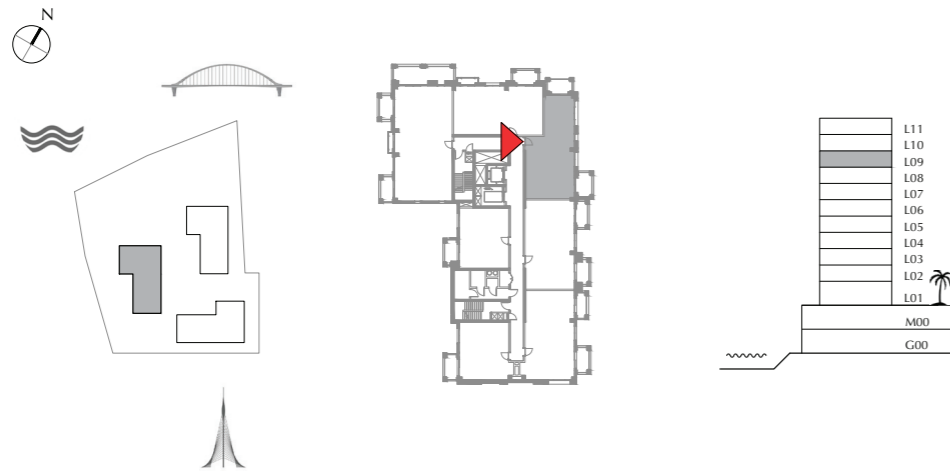
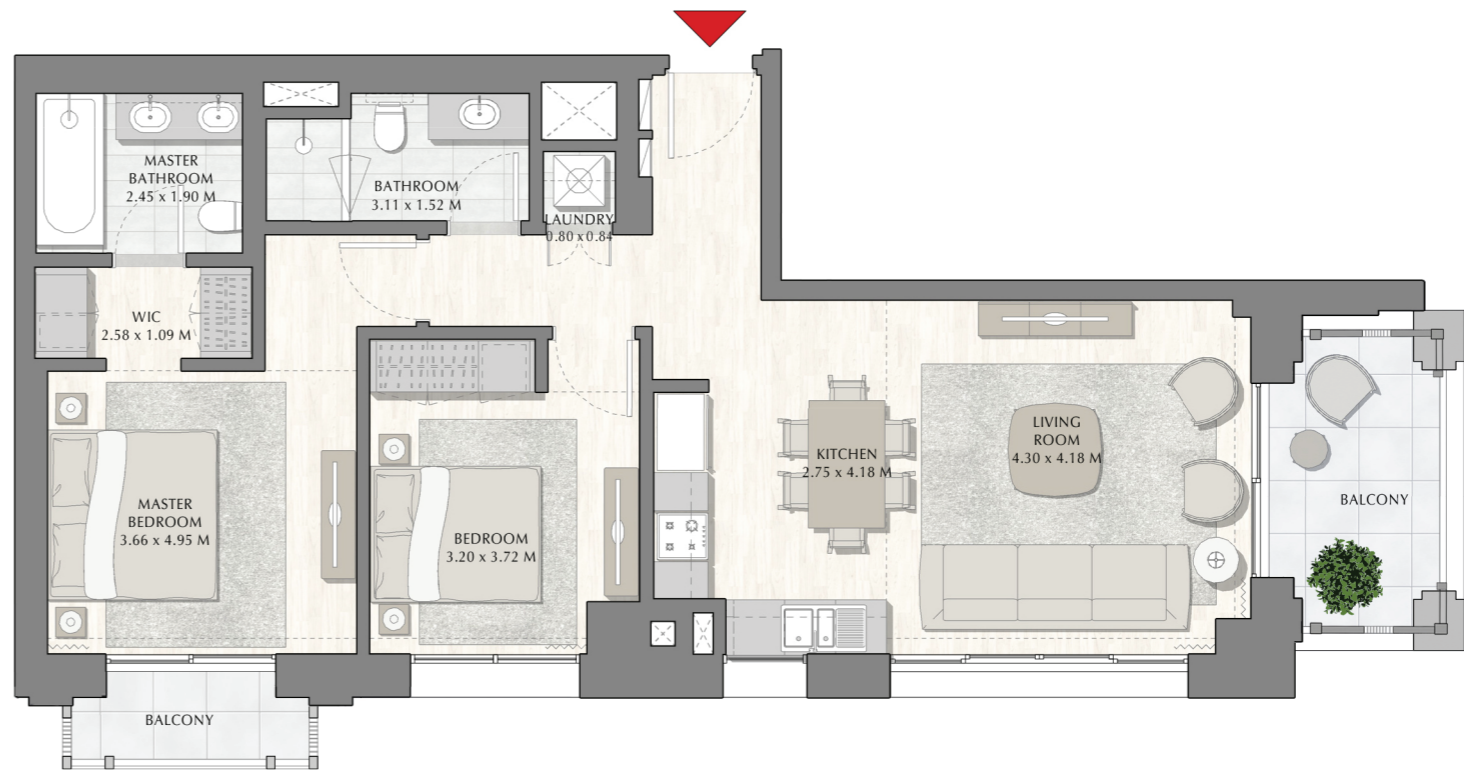
BUILDING 2

LEVEL 9

UNIT 05

2 BEDROOM

|                |             |                |
|----------------|-------------|----------------|
| APARTMENT AREA | 84.46 SQ.M. | 909.12 SQ.FT.  |
| BALCONY AREA   | 11.6 SQ.M.  | 124.86 SQ.FT.  |
| TOTAL AREA     | 96.06 SQ.M. | 1033.98 SQ.FT. |



FLOOR PLAN 1. All dimensions are in imperial and metric, and measured from finish to finish excluding construction tolerances. 2. All materials, dimensions, and drawings are approximate only. 3. Information is subject to change without notice, at developer's absolute discretion. 4. Actual area may vary from the stated area. 5. Drawings not to scale. 6. All images used are for illustrative purpose only and do not represent the actual size, features, specifications, fittings, and finishings. 7. The developer reserves the right to make revisions / alterations, at its absolute discretion, without any liability whatsoever.



DUBAI CREEK  
HARBOUR

BREEZE AT  
CREEK BEACH

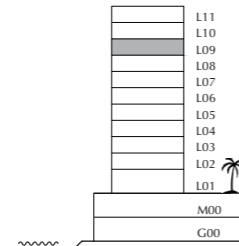
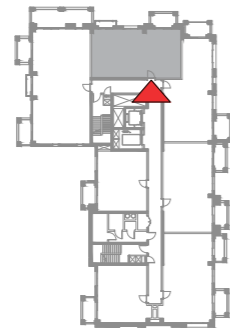
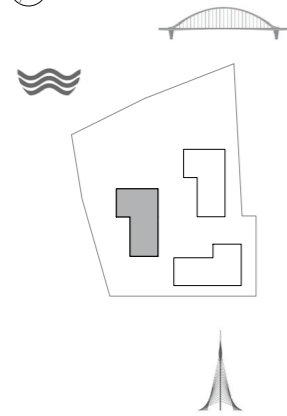
BUILDING 2

LEVEL 9

UNIT 06

2 BEDROOM

|                |             |                |
|----------------|-------------|----------------|
| APARTMENT AREA | 86.13 SQ.M. | 927.10 SQ.FT.  |
| BALCONY AREA   | 10.94 SQ.M. | 117.76 SQ.FT.  |
| TOTAL AREA     | 97.07 SQ.M. | 1044.86 SQ.FT. |



FLOOR PLAN 1. All dimensions are in imperial and metric, and measured from finish to finish excluding construction tolerances. 2. All materials, dimensions, and drawings are approximate only. 3. Information is subject to change without notice, at developer's absolute discretion. 4. Actual area may vary from the stated area. 5. Drawings not to scale. 6. All images used are for illustrative purpose only and do not represent the actual size, features, specifications, fittings, and finishings. 7. The developer reserves the right to make revisions / alterations, at its absolute discretion, without any liability whatsoever.



DUBAI CREEK  
HARBOUR

BREEZE AT  
CREEK BEACH

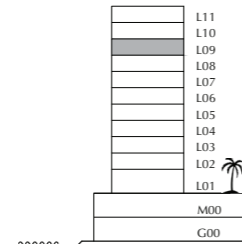
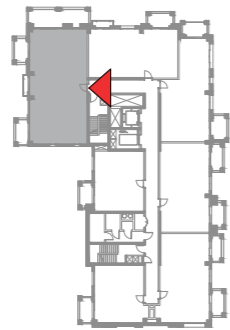
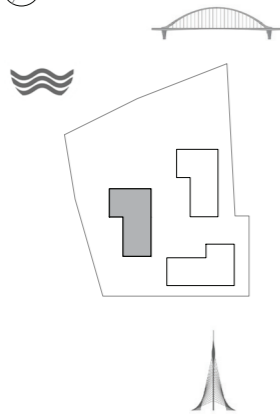
BUILDING 2

LEVEL 9

UNIT 07

3 BEDROOM

|                |              |                |
|----------------|--------------|----------------|
| APARTMENT AREA | 129.79 SQ.M. | 1397.05 SQ.FT. |
| BALCONY AREA   | 16.73 SQ.M.  | 180.08 SQ.FT.  |
| TOTAL AREA     | 146.52 SQ.M. | 1577.13 SQ.FT. |



FLOOR PLAN 1. All dimensions are in imperial and metric, and measured from finish to finish excluding construction tolerances. 2. All materials, dimensions, and drawings are approximate only. 3. Information is subject to change without notice, at developer's absolute discretion. 4. Actual area may vary from the stated area. 5. Drawings not to scale. 6. All images used are for illustrative purpose only and do not represent the actual size, features, specifications, fittings, and finishings. 7. The developer reserves the right to make revisions / alterations, at its absolute discretion, without any liability whatsoever.



DUBAI CREEK  
HARBOUR

BREEZE AT  
CREEK BEACH

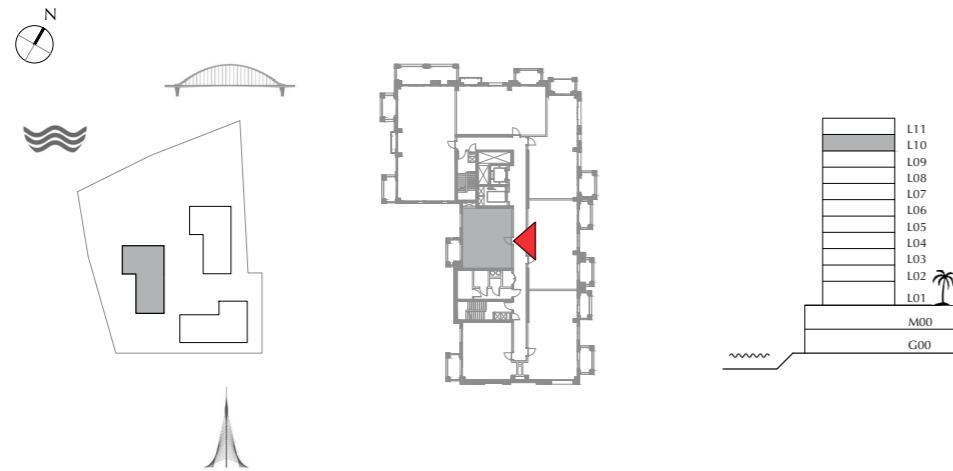
BUILDING 2

LEVEL 10

UNIT 01

1 BEDROOM

|                |             |               |
|----------------|-------------|---------------|
| APARTMENT AREA | 58.58 SQ.M. | 630.55 SQ.FT. |
| BALCONY AREA   | 7.31 SQ.M.  | 78.68 SQ.FT.  |
| TOTAL AREA     | 65.89 SQ.M. | 709.23 SQ.FT. |



FLOOR PLAN 1. All dimensions are in imperial and metric, and measured from finish to finish excluding construction tolerances. 2. All materials, dimensions, and drawings are approximate only. 3. Information is subject to change without notice, at developer's absolute discretion. 4. Actual area may vary from the stated area. 5. Drawings not to scale. 6. All images used are for illustrative purpose only and do not represent the actual size, features, specifications, fittings, and furnishings. 7. The developer reserves the right to make revisions / alterations, at its absolute discretion, without any liability whatsoever.

DUBAI CREEK  
HARBOUR

BREEZE AT  
CREEK BEACH

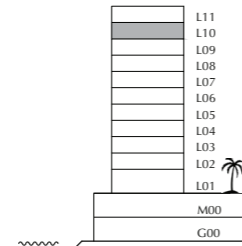
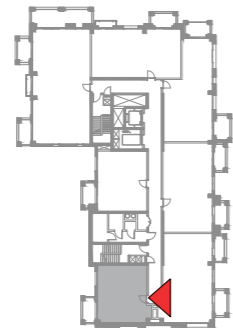
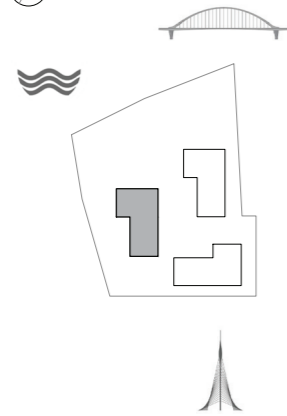
BUILDING 2

LEVEL 10

UNIT 02

1 BEDROOM

|                |             |               |
|----------------|-------------|---------------|
| APARTMENT AREA | 58.27 SQ.M. | 627.21 SQ.FT. |
| BALCONY AREA   | 7.31 SQ.M.  | 78.68 SQ.FT.  |
| TOTAL AREA     | 65.58 SQ.M. | 705.89 SQ.FT. |



FLOOR PLAN 1. All dimensions are in imperial and metric, and measured from finish to finish excluding construction tolerances. 2. All materials, dimensions, and drawings are approximate only. 3. Information is subject to change without notice, at developer's absolute discretion. 4. Actual area may vary from the stated area. 5. Drawings not to scale. 6. All images used are for illustrative purpose only and do not represent the actual size, features, specifications, fittings, and finishings. 7. The developer reserves the right to make revisions / alterations, at its absolute discretion, without any liability whatsoever.

DUBAI CREEK  
HARBOUR

BREEZE AT  
CREEK BEACH

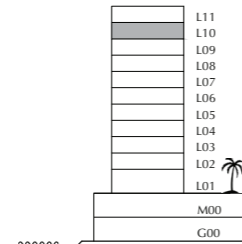
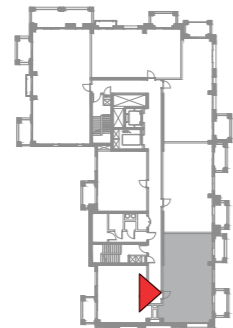
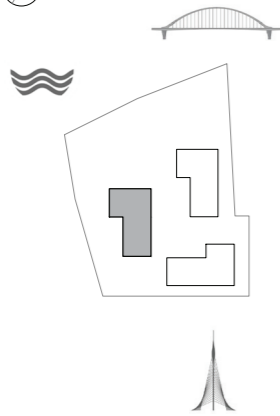
BUILDING 2

LEVEL 10

UNIT 03

2 BEDROOM

|                |             |                |
|----------------|-------------|----------------|
| APARTMENT AREA | 88.3 SQ.M.  | 950.45 SQ.FT.  |
| BALCONY AREA   | 9.95 SQ.M.  | 107.10 SQ.FT.  |
| TOTAL AREA     | 98.25 SQ.M. | 1057.55 SQ.FT. |



FLOOR PLAN 1. All dimensions are in imperial and metric, and measured from finish to finish excluding construction tolerances. 2. All materials, dimensions, and drawings are approximate only. 3. Information is subject to change without notice, at developer's absolute discretion. 4. Actual area may vary from the stated area. 5. Drawings not to scale. 6. All images used are for illustrative purpose only and do not represent the actual size, features, specifications, fittings, and finishings. 7. The developer reserves the right to make revisions / alterations, at its absolute discretion, without any liability whatsoever.



DUBAI CREEK  
HARBOUR

BREEZE AT  
CREEK BEACH

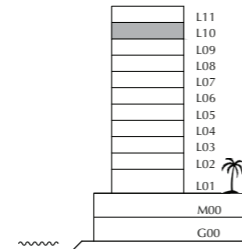
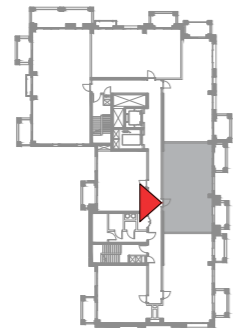
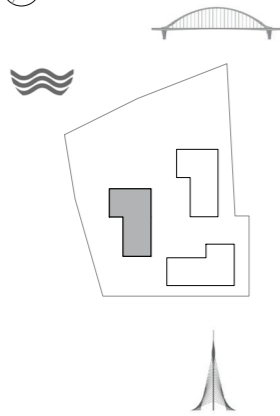
BUILDING 2

LEVEL 10

UNIT 04

2 BEDROOM

|                |             |                |
|----------------|-------------|----------------|
| APARTMENT AREA | 85.96 SQ.M. | 925.27 SQ.FT.  |
| BALCONY AREA   | 10.21 SQ.M. | 109.90 SQ.FT.  |
| TOTAL AREA     | 96.17 SQ.M. | 1035.17 SQ.FT. |



FLOOR PLAN 1. All dimensions are in imperial and metric, and measured from finish to finish excluding construction tolerances. 2. All materials, dimensions, and drawings are approximate only. 3. Information is subject to change without notice, at developer's absolute discretion. 4. Actual area may vary from the stated area. 5. Drawings not to scale. 6. All images used are for illustrative purpose only and do not represent the actual size, features, specifications, fittings, and finishings. 7. The developer reserves the right to make revisions / alterations, at its absolute discretion, without any liability whatsoever.

DUBAI CREEK  
HARBOUR

BREEZE AT  
CREEK BEACH

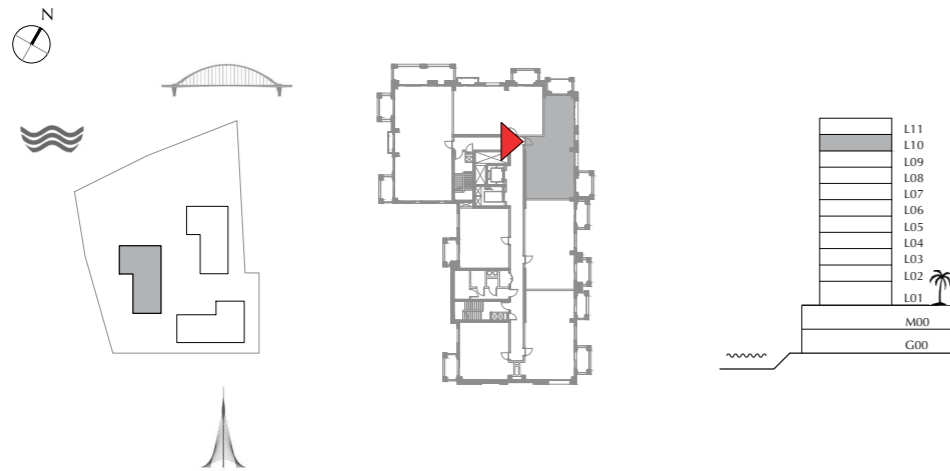
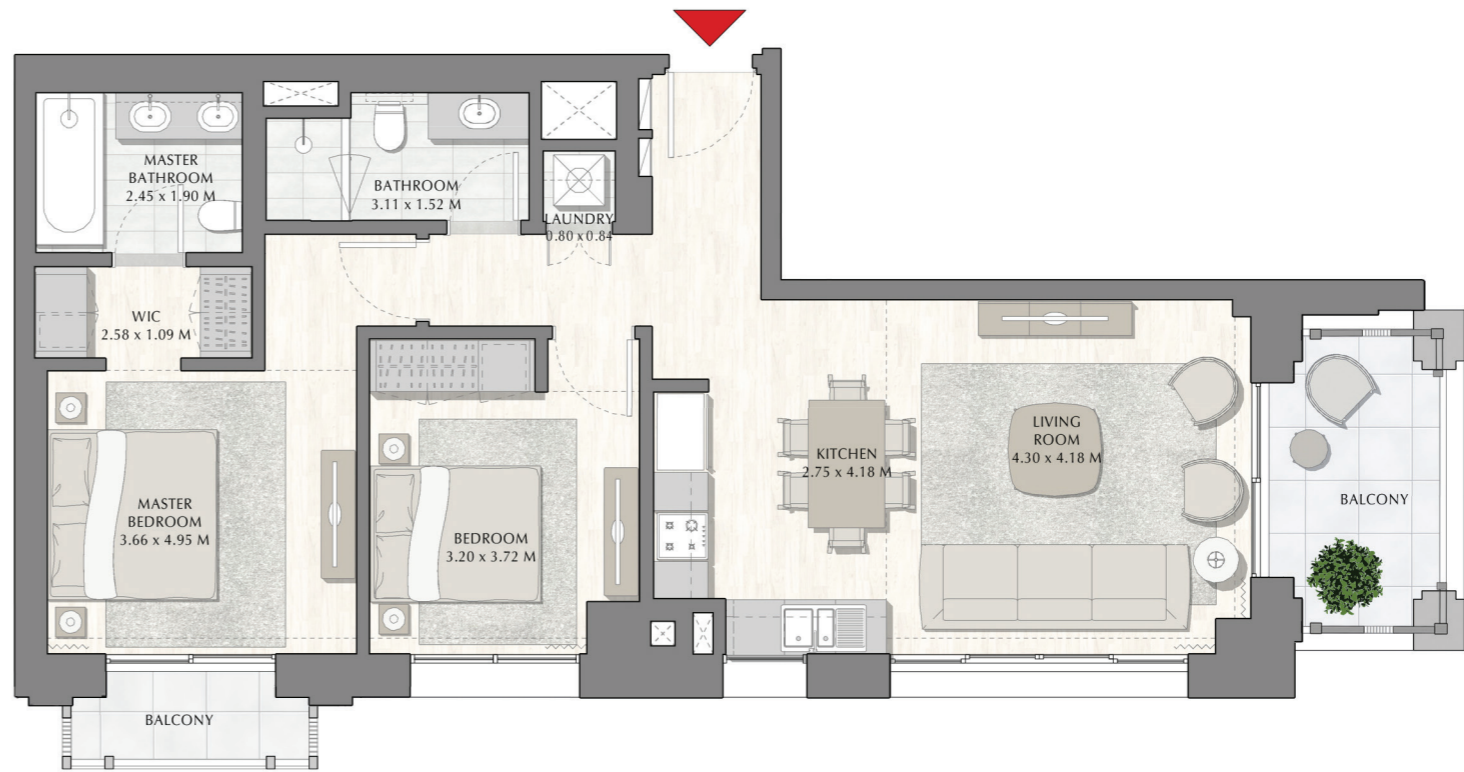
BUILDING 2

LEVEL 10

UNIT 05

2 BEDROOM

|                |             |                |
|----------------|-------------|----------------|
| APARTMENT AREA | 84.46 SQ.M. | 909.12 SQ.FT.  |
| BALCONY AREA   | 11.6 SQ.M.  | 124.86 SQ.FT.  |
| TOTAL AREA     | 96.06 SQ.M. | 1033.98 SQ.FT. |



FLOOR PLAN 1. All dimensions are in imperial and metric, and measured from finish to finish excluding construction tolerances. 2. All materials, dimensions, and drawings are approximate only. 3. Information is subject to change without notice, at developer's absolute discretion. 4. Actual area may vary from the stated area. 5. Drawings not to scale. 6. All images used are for illustrative purpose only and do not represent the actual size, features, specifications, fittings, and finishings. 7. The developer reserves the right to make revisions / alterations, at its absolute discretion, without any liability whatsoever.



DUBAI CREEK  
HARBOUR

BREEZE AT  
CREEK BEACH

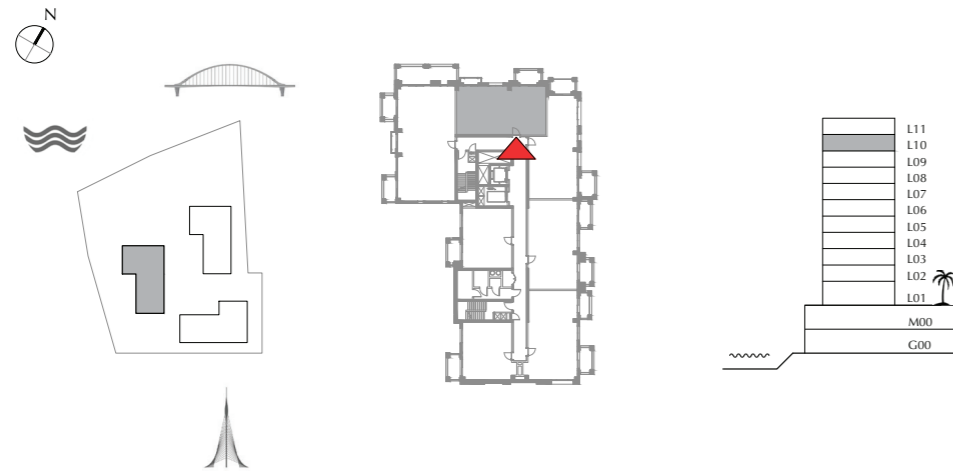
BUILDING 2

LEVEL 10

UNIT 06

2 BEDROOM

|                |             |                |
|----------------|-------------|----------------|
| APARTMENT AREA | 86.13 SQ.M. | 927.10 SQ.FT.  |
| BALCONY AREA   | 7.87 SQ.M.  | 84.71 SQ.FT.   |
| TOTAL AREA     | 94.00 SQ.M. | 1011.81 SQ.FT. |



FLOOR PLAN 1. All dimensions are in imperial and metric, and measured from finish to finish excluding construction tolerances. 2. All materials, dimensions, and drawings are approximate only. 3. Information is subject to change without notice, at developer's absolute discretion. 4. Actual area may vary from the stated area. 5. Drawings not to scale. 6. All images used are for illustrative purpose only and do not represent the actual size, features, specifications, fittings, and finishings. 7. The developer reserves the right to make revisions / alterations, at its absolute discretion, without any liability whatsoever.

DUBAI CREEK  
HARBOUR

BREEZE AT  
CREEK BEACH

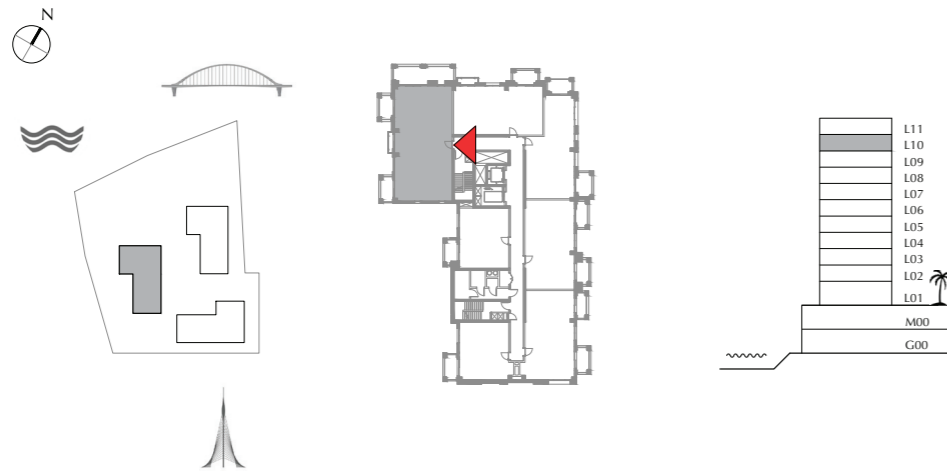
BUILDING 2

LEVEL 10

UNIT 07

3 BEDROOM

|                |              |                |
|----------------|--------------|----------------|
| APARTMENT AREA | 129.79 SQ.M. | 1397.05 SQ.FT. |
| BALCONY AREA   | 16.73 SQ.M.  | 180.08 SQ.FT.  |
| TOTAL AREA     | 146.52 SQ.M. | 1577.13 SQ.FT. |



FLOOR PLAN 1. All dimensions are in imperial and metric, and measured from finish to finish excluding construction tolerances. 2. All materials, dimensions, and drawings are approximate only. 3. Information is subject to change without notice, at developer's absolute discretion. 4. Actual area may vary from the stated area. 5. Drawings not to scale. 6. All images used are for illustrative purpose only and do not represent the actual size, features, specifications, fittings, and finishings. 7. The developer reserves the right to make revisions / alterations, at its absolute discretion, without any liability whatsoever.



DUBAI CREEK  
HARBOUR

BREEZE AT  
CREEK BEACH

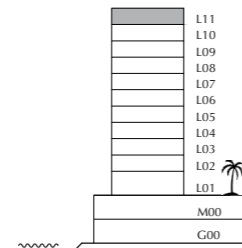
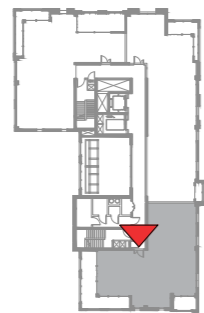
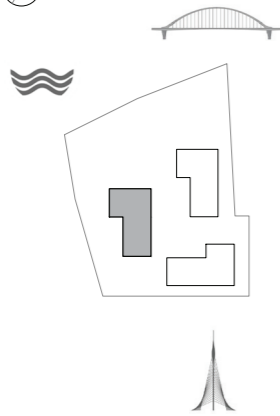
BUILDING 2

LEVEL 11(PENTHOUSE)

UNIT 1101

3 BEDROOM

|                |              |                |
|----------------|--------------|----------------|
| APARTMENT AREA | 145.26 SQ.M. | 1563.57 SQ.FT. |
| BALCONY AREA   | 34.03 SQ.M.  | 366.30 SQ.FT.  |
| TOTAL AREA     | 179.29 SQ.M. | 1929.87 SQ.FT. |



FLOOR PLAN 1. All dimensions are in imperial and metric, and measured from finish to finish excluding construction tolerances. 2. All materials, dimensions, and drawings are approximate only. 3. Information is subject to change without notice, at developer's absolute discretion. 4. Actual area may vary from the stated area. 5. Drawings not to scale. 6. All images used are for illustrative purpose only and do not represent the actual size, features, specifications, fittings, and finishings. 7. The developer reserves the right to make revisions / alterations, at its absolute discretion, without any liability whatsoever.



DUBAI CREEK  
HARBOUR

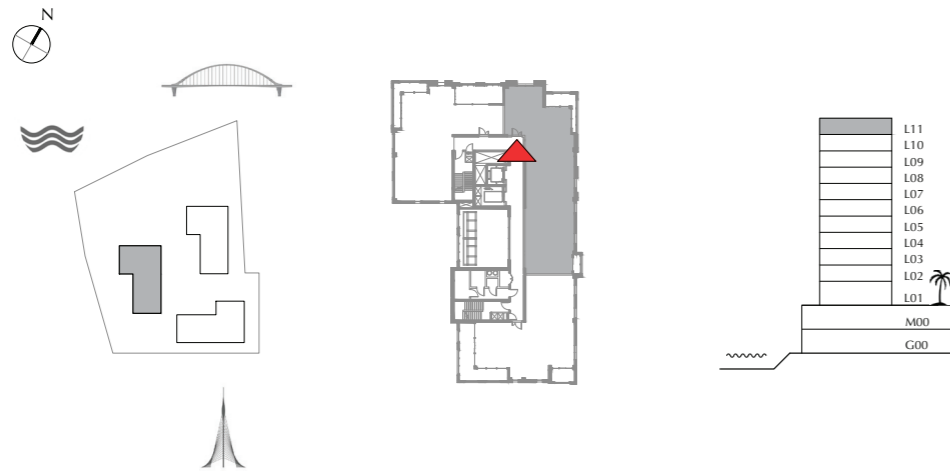
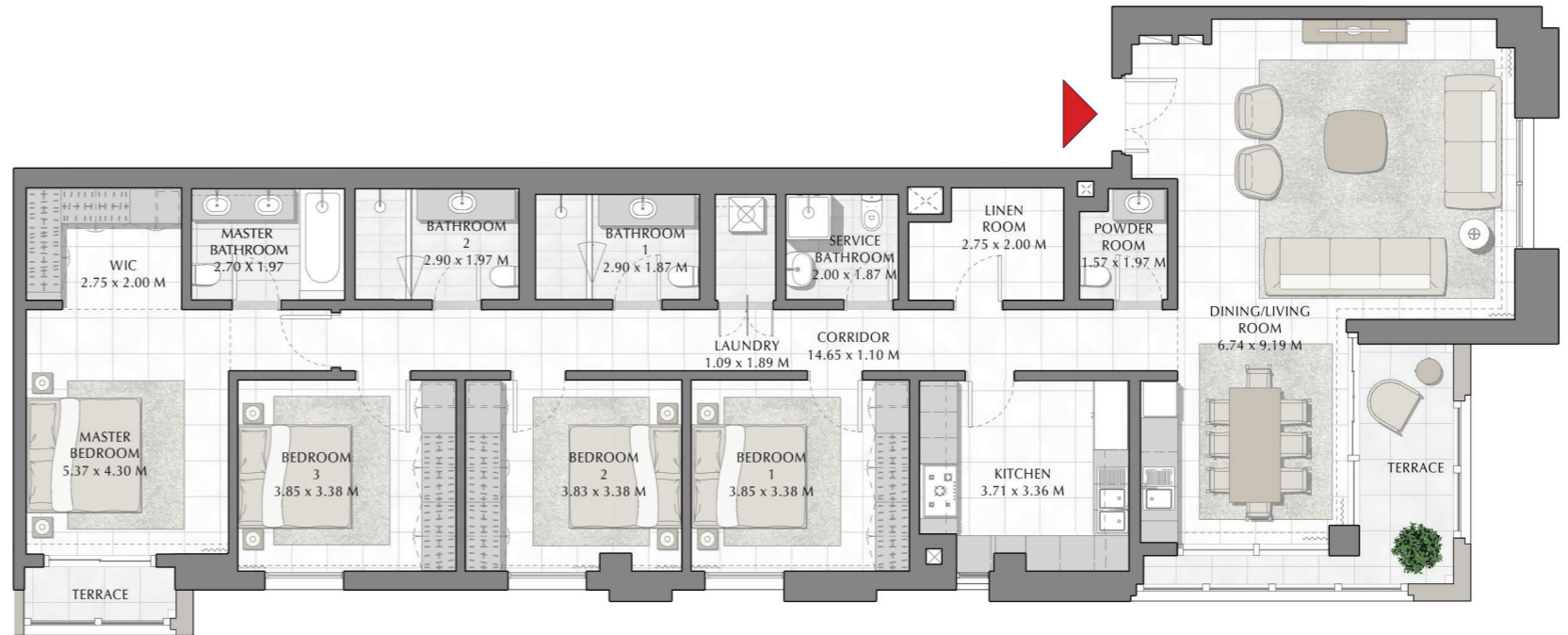
BREEZE AT  
CREEK BEACH

BUILDING 2  
LEVEL 11 (PENTHOUSE)

UNIT 1102

4 BEDROOM

|                |              |                |
|----------------|--------------|----------------|
| APARTMENT AREA | 188.70 SQ.M. | 2031.15 SQ.FT. |
| BALCONY AREA   | 14.11 SQ.M.  | 151.88 SQ.FT.  |
| TOTAL AREA     | 202.81 SQ.M. | 2183.03 SQ.FT. |



FLOOR PLAN 1. All dimensions are in imperial and metric, and measured from finish to finish excluding construction tolerances. 2. All materials, dimensions, and drawings are approximate only. 3. Information is subject to change without notice, at developer's absolute discretion. 4. Actual area may vary from the stated area. 5. Drawings not to scale. 6. All images used are for illustrative purpose only and do not represent the actual size, features, specifications, fittings, and furnishings. 7. The developer reserves the right to make revisions / alterations, at its absolute discretion, without any liability whatsoever.



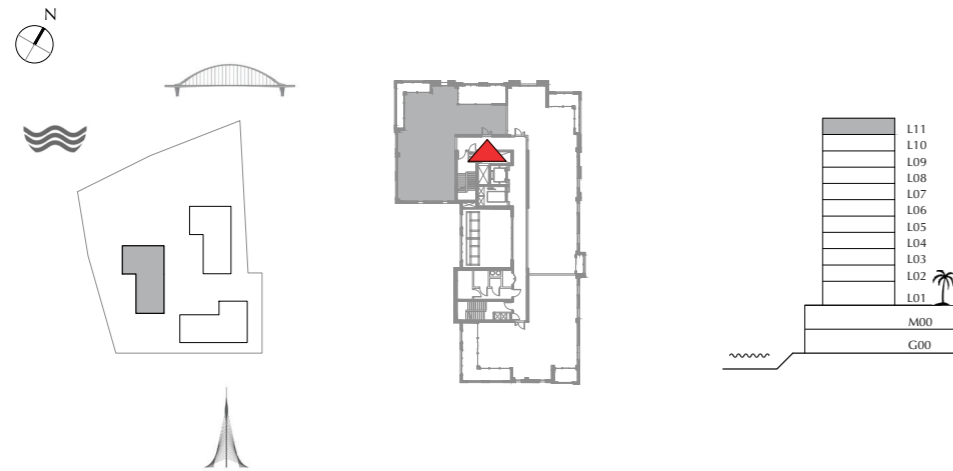
DUBAI CREEK  
HARBOUR

BREEZE AT  
CREEK BEACH

BUILDING 2  
LEVEL 11 (PENTHOUSE)  
UNIT 1103

3 BEDROOM

|                |              |                |
|----------------|--------------|----------------|
| APARTMENT AREA | 153.76 SQ.M. | 1655.06 SQ.FT. |
| BALCONY AREA   | 30.92 SQ.M.  | 332.82 SQ.FT.  |
| TOTAL AREA     | 184.68 SQ.M. | 1987.88 SQ.FT. |



FLOOR PLAN 1. All dimensions are in imperial and metric, and measured from finish to finish excluding construction tolerances. 2. All materials, dimensions, and drawings are approximate only. 3. Information is subject to change without notice, at developer's absolute discretion. 4. Actual area may vary from the stated area. 5. Drawings not to scale. 6. All images used are for illustrative purpose only and do not represent the actual size, features, specifications, fittings, and finishings. 7. The developer reserves the right to make revisions / alterations, at its absolute discretion, without any liability whatsoever.