

CREEKSIDE 18

DUBAI CREEK HARBOUR

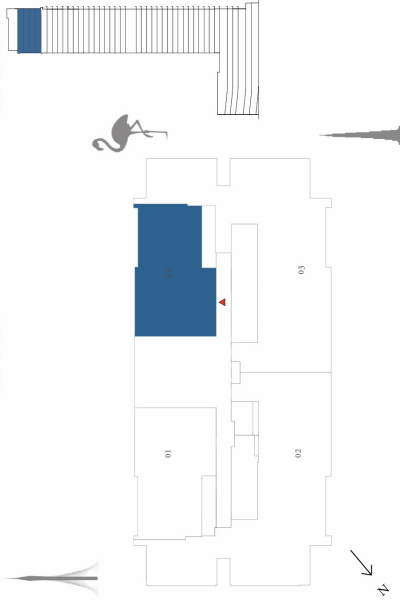
TOWER A

PH 2 BEDROOM

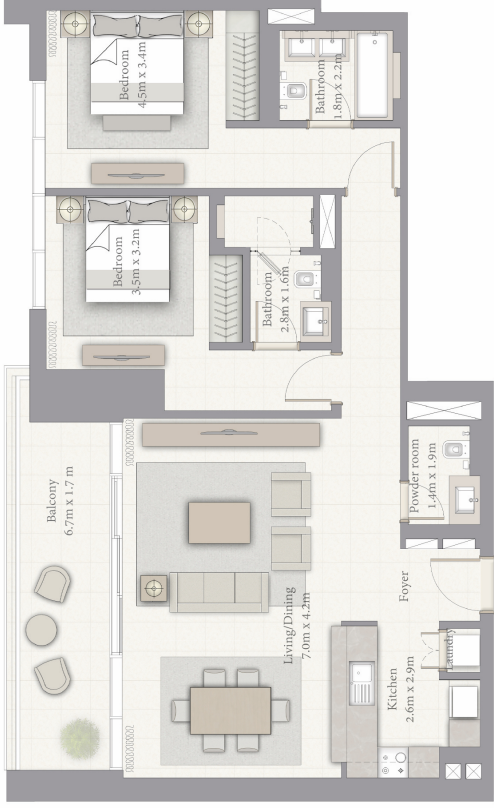
LEVEL 34+37 UNIT 04

SUITE AREA	1165.30 SQ.FT.	108.26 SQ.M.
BALCONY AREA	161.03 SQ.FT.	14.96 SQ.M.
TOTAL AREA	1326.33 SQ.FT.	123.22 SQ.M.

KEY PLAN



KEY SECTION



FLOOR PLAN 1. All dimensions are in imperial and metric, and measured from finish to finish excluding construction tolerances. 2. All materials, dimensions, and drawings are approximate only. 3. Information is subject to change without notice, at developer's absolute discretion. 4. Actual area may vary from the stated area. 5. Drawings not to scale. 6. All images used are for illustrative purposes only and do not represent the actual size, features, specifications, fittings, and furnishings. 7. The developer reserves the right to make revisions / alterations, at it's absolute discretion, without any liability whatsoever.

CREEKSIDE 18

Type 5



3 BEDROOM W / BALCONY TOWER B UNIT 05 / LEVEL 2-16, 18-33

Suite Area	1480.00 Sq.ft. / 137.48 Sq.m.
Balcony Area	150.00 Sq.ft. / 13.97 Sq.m.
Total Area	1630.00 Sq.ft. / 151.45 Sq.m.



1. All materials, dimensions & drawings are approximate. 2. Information is subject to change without notice.
3. Actual suite area may vary from the stated area. 4. Drawings not to scale.
5. The developer reserves the right to make revisions/alterations without any liability whatsoever.

CREEKSIDE 18

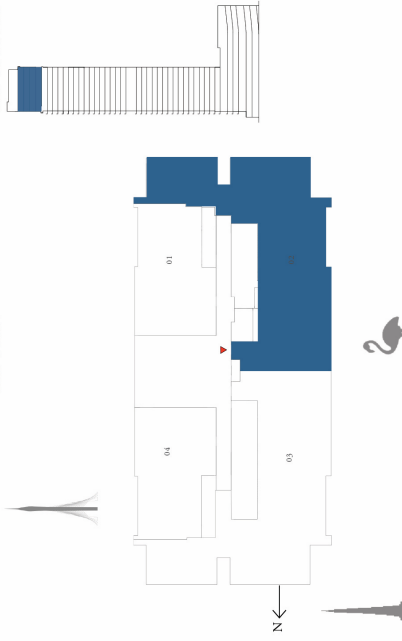
DUBAI CREEK HARBOUR

TOWER B PH 3 BEDROOM

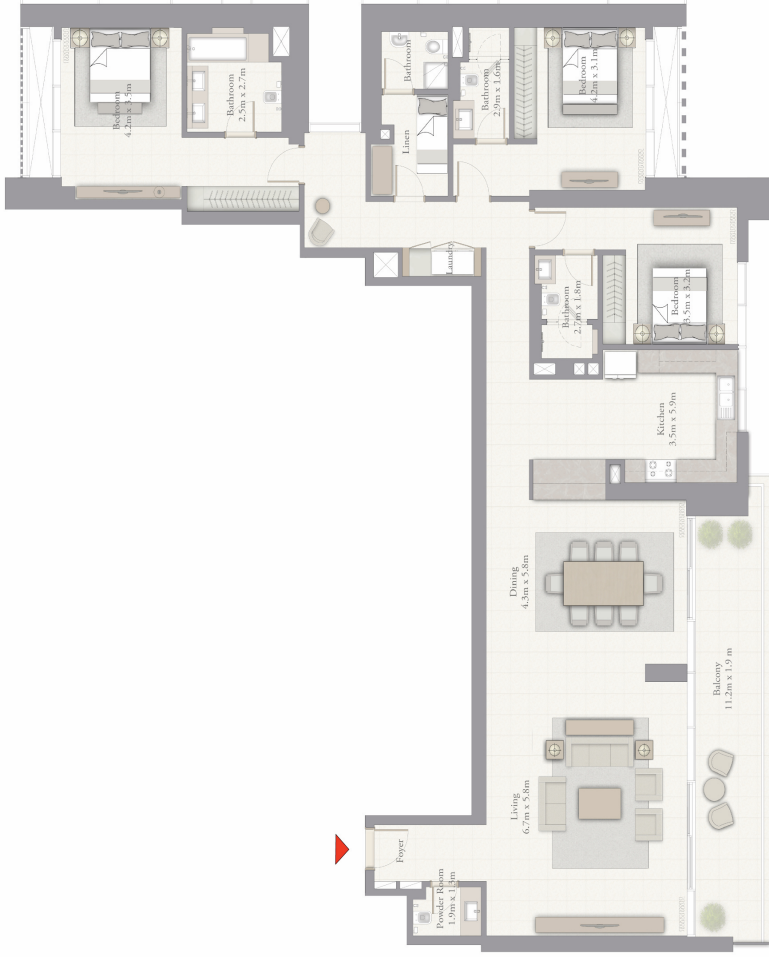
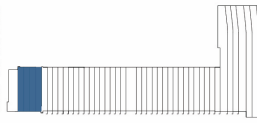
LEVEL 34+37 UNIT 02

SUITE AREA	2370.43 SQ.FT.	220.22 SQ.M.
BALCONY AREA	252.31 SQ.FT.	23.44 SQ.M.
TOTAL AREA	2622.74 SQ.FT.	243.66 SQ.M.

KEY PLAN



KEY SECTION



FLOOR PLAN 1. All dimensions are in imperial and metric, and measured from finish to finish excluding construction tolerances. 2. All materials, dimensions, and drawings are approximate only. 3. Information is subject to change without notice, at developer's absolute discretion. 4. Actual area may vary from the stated area. 5. Drawings not to scale. 6. All images used are for illustrative purposes only and do not represent the actual size, features, specifications, fittings, and furnishings. 7. The developer reserves the right to make revisions / alterations, at it's absolute discretion, without any liability whatsoever.

EMAAR

CREEKSIDE 18

DUBAI CREEK HARBOUR

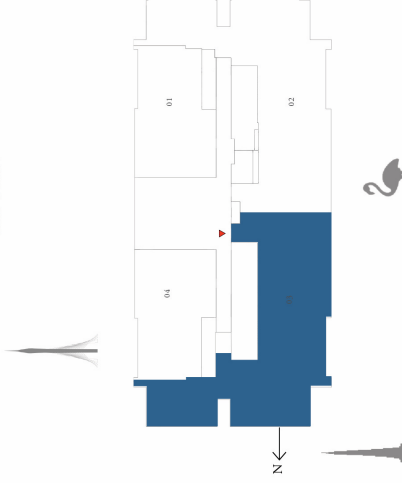
TOWER B

PH 3 BEDROOM

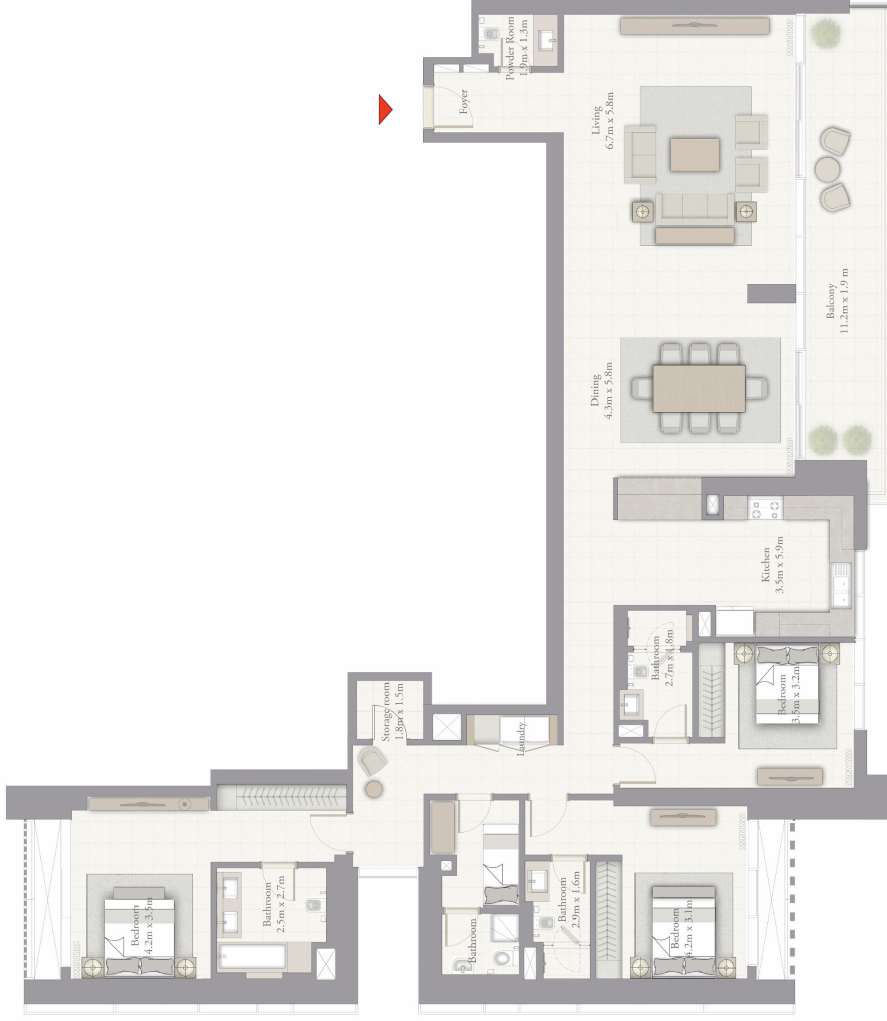
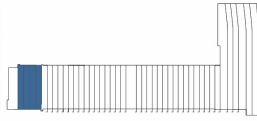
LEVEL 34+37 UNIT 03

SUITE AREA	2418.11 SQ.FT.	224.65 SQ.M.
BALCONY AREA	254.35 SQ.FT.	23.63 SQ.M.
TOTAL AREA	2672.46 SQ.FT.	248.28 SQ.M.

KEY PLAN



KEY SECTION



FLOOR PLAN 1. All dimensions are in imperial and metric, and measured from finish to finish excluding construction tolerances. 2. All materials, dimensions, and drawings are approximate only. 3. Information is subject to change without notice, at developer's absolute discretion. 4. Actual area may vary from the stated area. 5. Drawings not to scale. 6. All images used are for illustrative purposes only and do not represent the actual size, features, specifications, fittings, and furnishings. 7. The developer reserves the right to make revisions / alterations, at it's absolute discretion, without any liability whatsoever.