

DOWNTOWN  
DUBAI

---

GRANDE

SIGNATURE RESIDENCES

FLOOR PLANS

EMAAR

# DOWNTOWN DUBAI

GRANDE

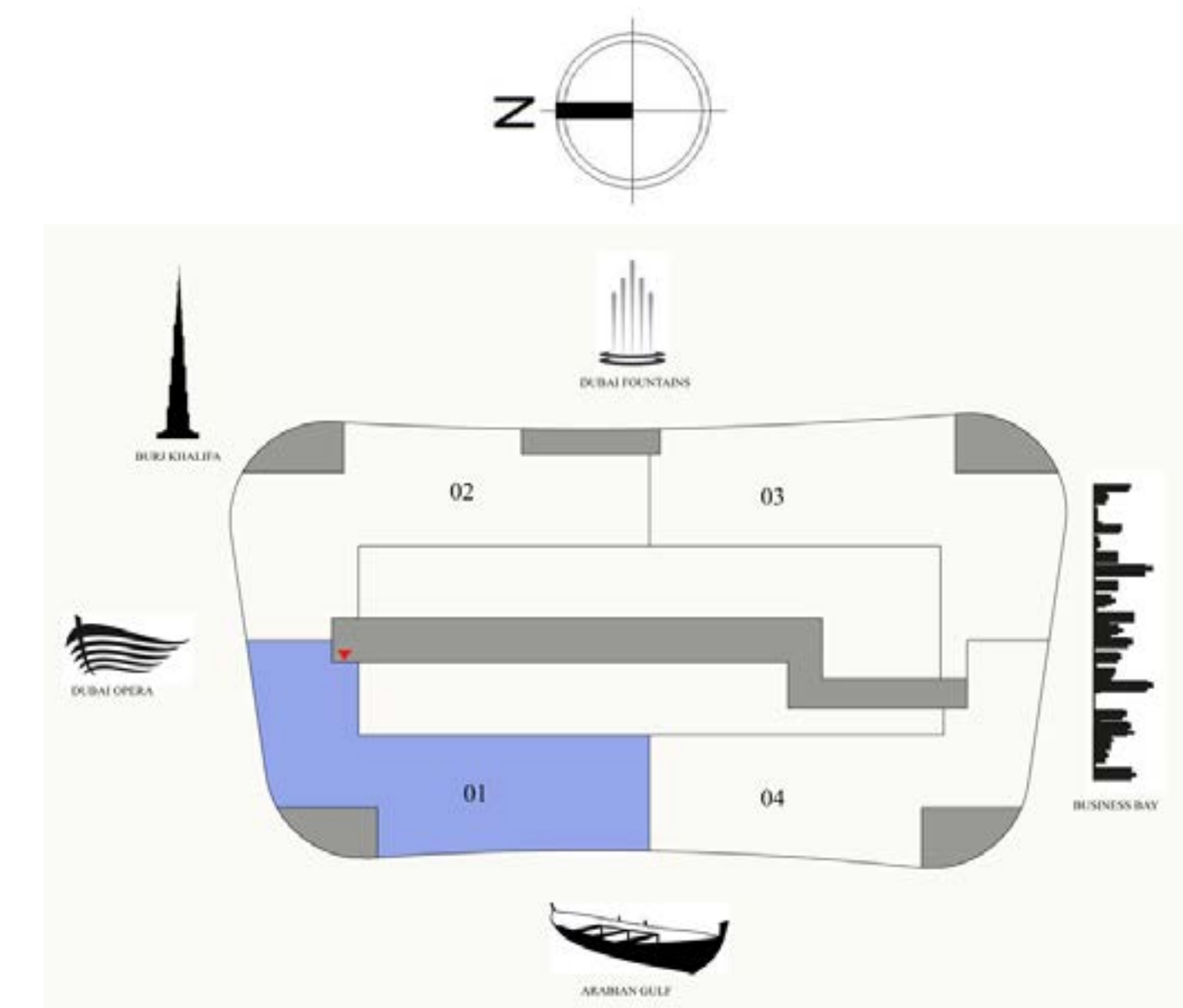
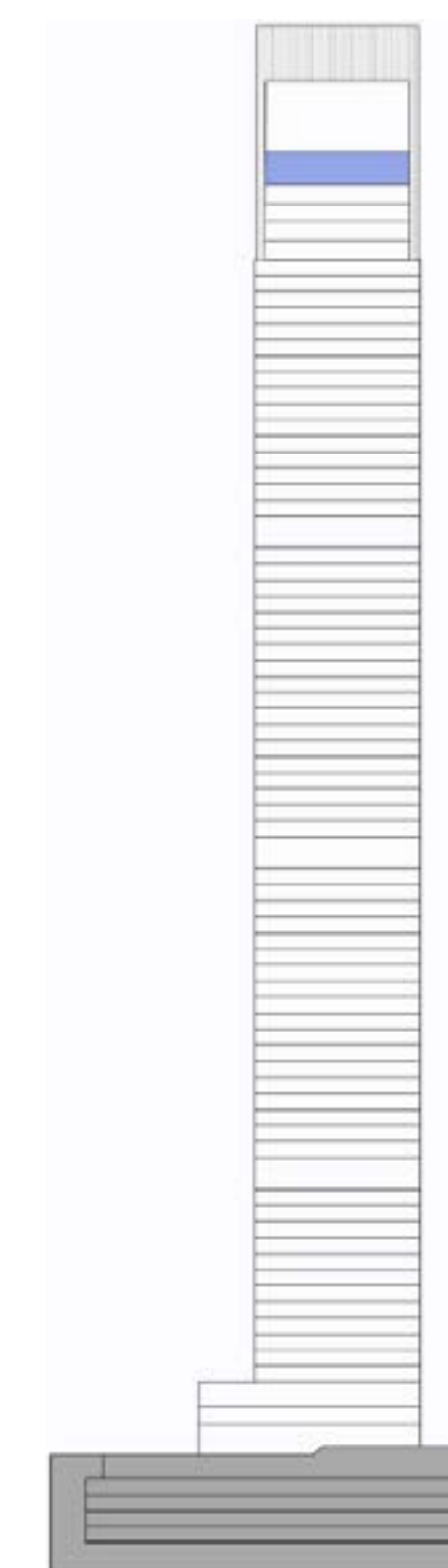
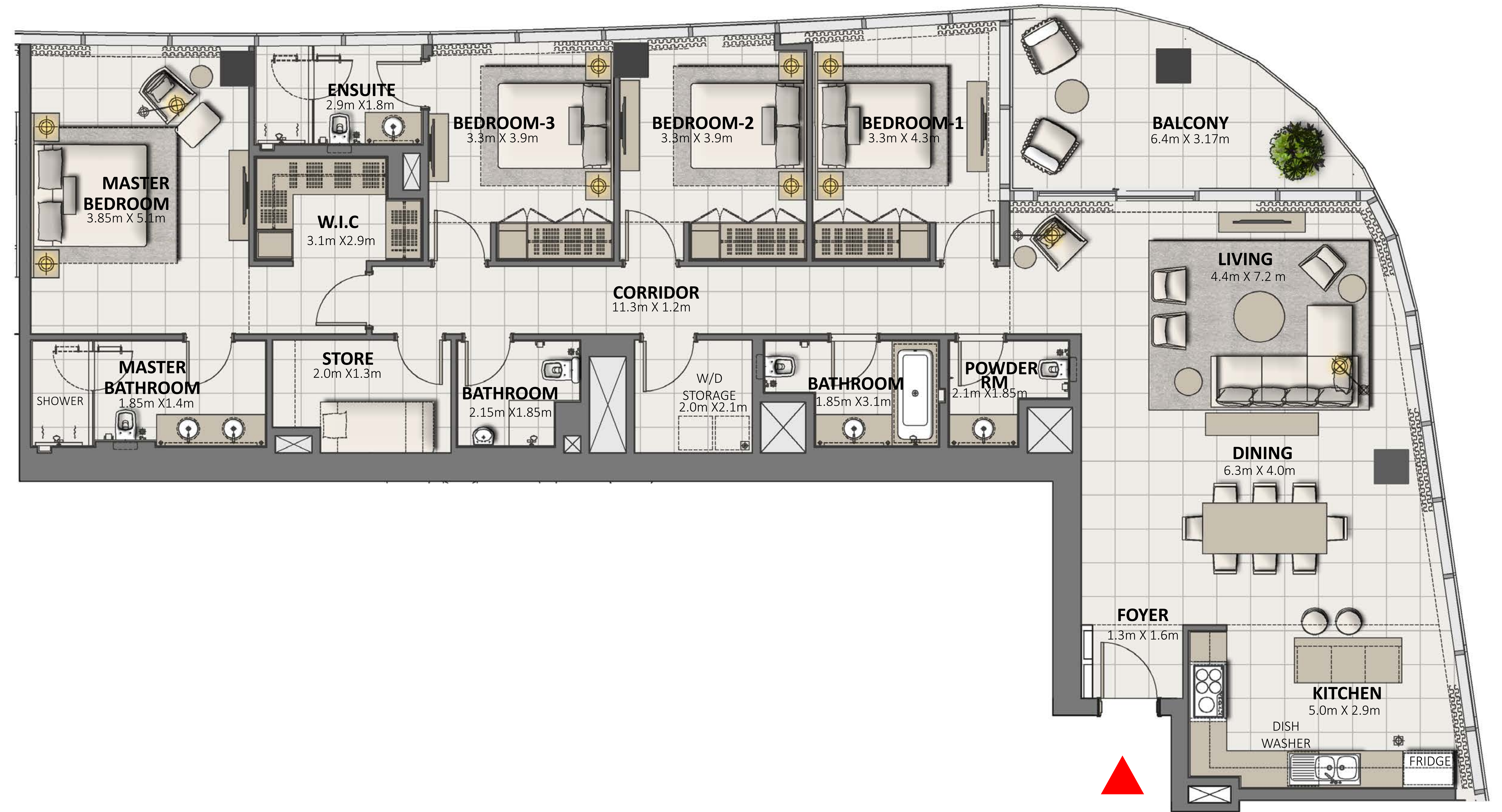
SIGNATURE RESIDENCES

LEVEL PENTHOUSE

4 BEDROOM

UNIT 1

SUITE AREA	2176.79 SQ.FT.	202.23 SQ.M.
BALCONY AREA	173.51 SQ.FT.	16.12 SQ.M.
TOTAL AREA	2350.30 SQ.FT.	218.35 SQ.M.



FLOOR PLAN 1. All dimensions are in imperial and metric, and measured from finish to finish excluding construction tolerances. 2. All materials, dimensions, and drawings are approximate only. 3. Information is subject to change without notice, at developer's absolute discretion. 4. Actual area may vary from the stated area. 5. Drawings not to scale. 6. All images used are for illustrative purposes only and do not represent the actual size, features, specifications, fittings, and furnishings. 7. The developer reserves the right to make revisions / alterations, at it's absolute discretion, without any liability whatsoever.

# DOWNTOWN DUBAI

GRANDE

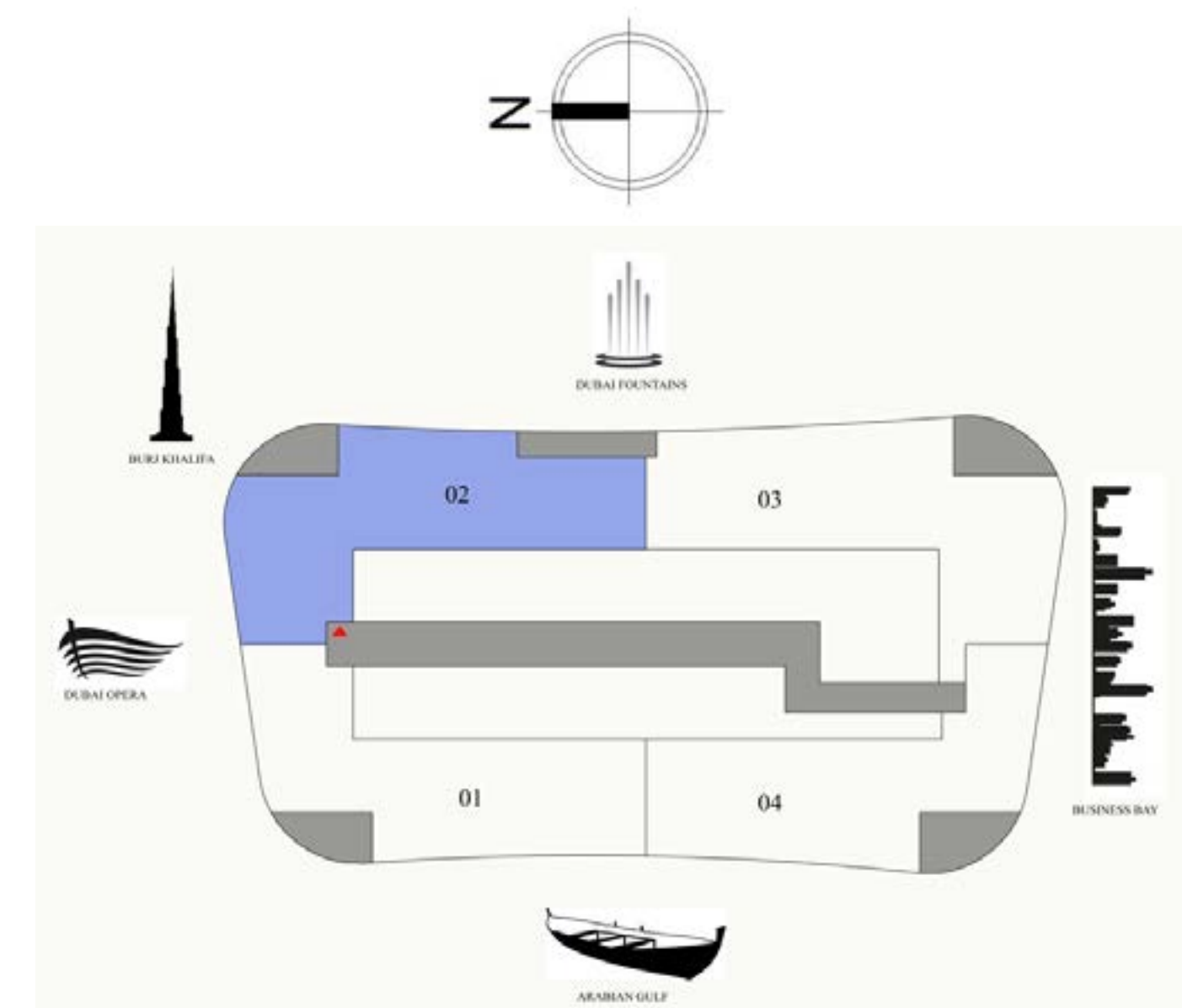
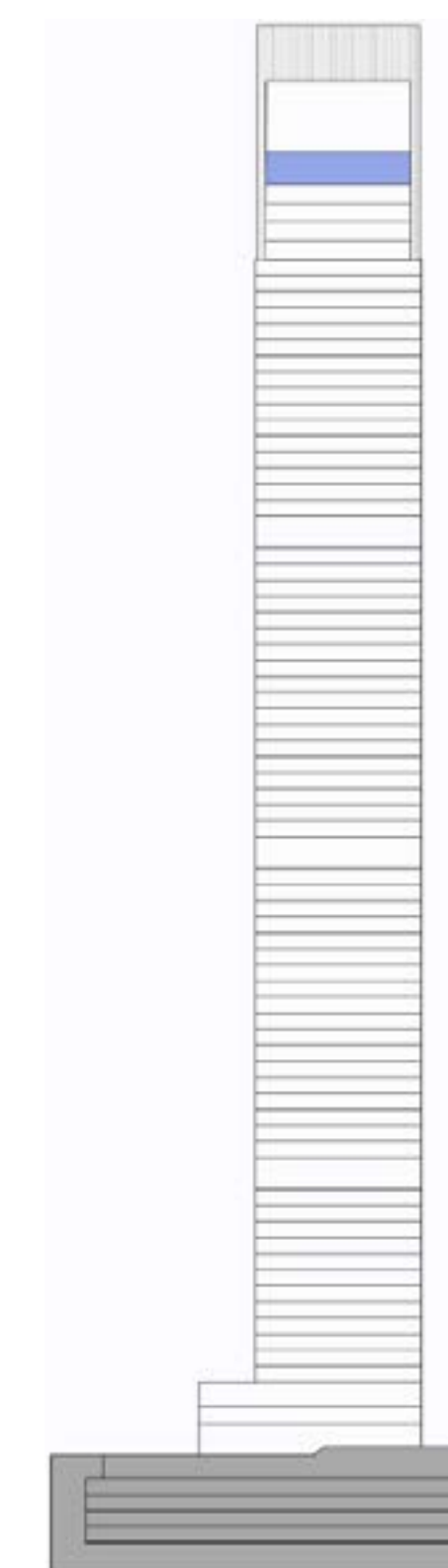
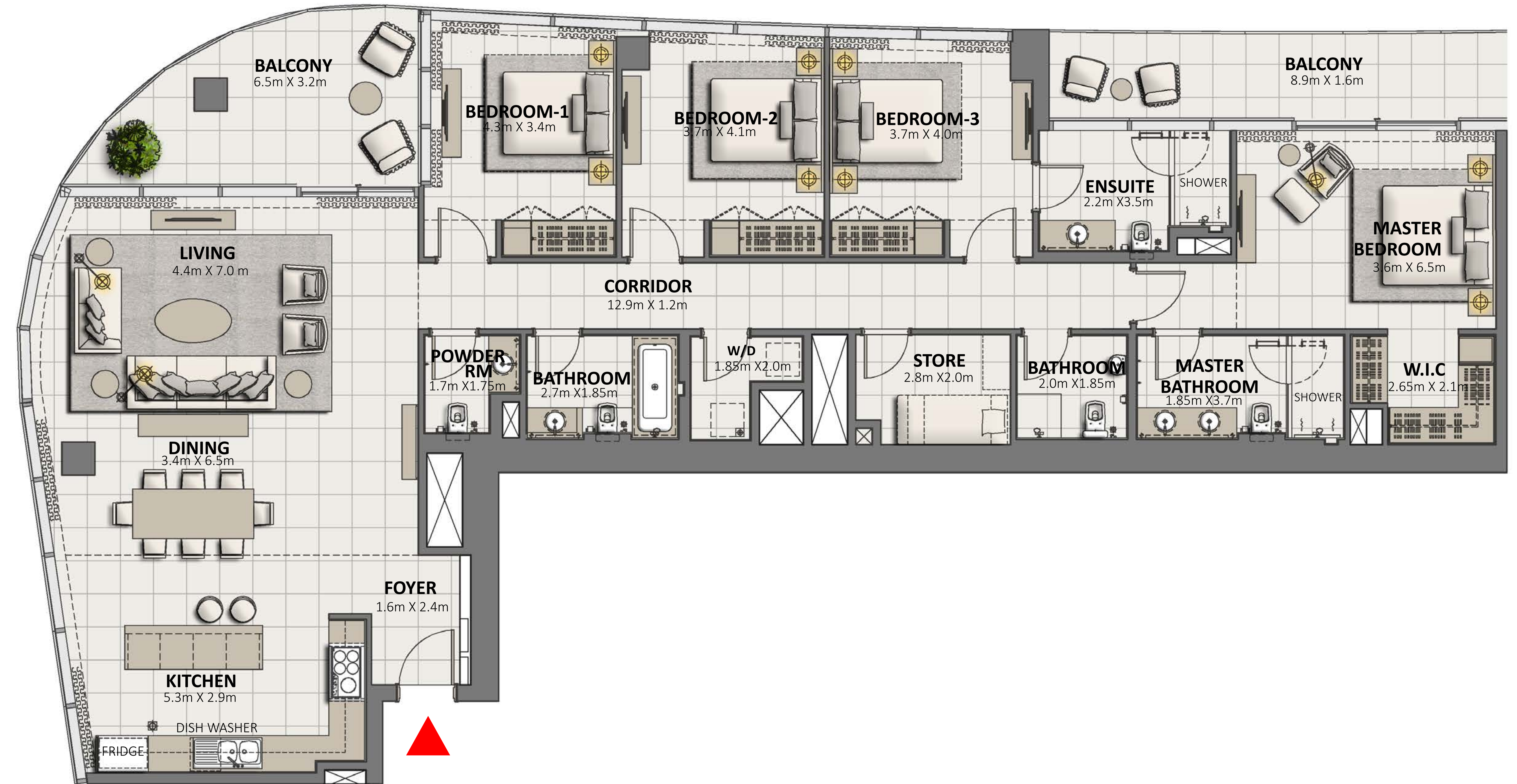
SIGNATURE RESIDENCES

LEVEL PENTHOUSE

4 BEDROOM

UNIT 2

SUITE AREA	2257.19 SQ.FT.	209.70 SQ.M.
BALCONY AREA	330.45 SQ.FT.	30.70 SQ.M.
TOTAL AREA	2587.64 SQ.FT.	240.40 SQ.M.



FLOOR PLAN 1. All dimensions are in imperial and metric, and measured from finish to finish excluding construction tolerances. 2. All materials, dimensions, and drawings are approximate only. 3. Information is subject to change without notice, at developer's absolute discretion. 4. Actual area may vary from the stated area. 5. Drawings not to scale. 6. All images used are for illustrative purposes only and do not represent the actual size, features, specifications, fittings, and furnishings. 7. The developer reserves the right to make revisions / alterations, at it's absolute discretion, without any liability whatsoever.

# DOWNTOWN DUBAI

GRANDE

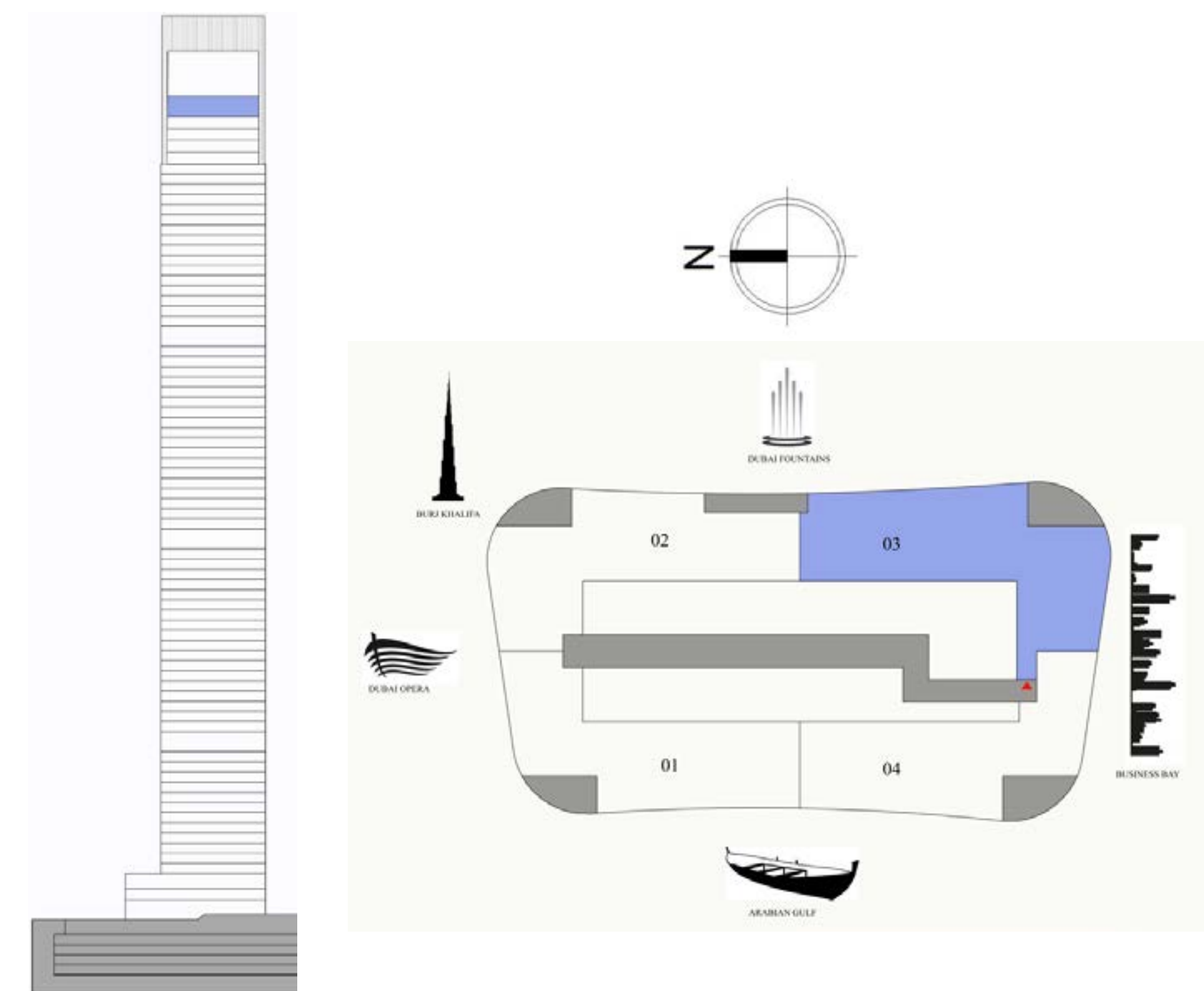
SIGNATURE RESIDENCES

LEVEL PENTHOUSE

4 BEDROOM

UNIT 3

SUITE AREA	2482.27 SQ.FT.	230.61 SQ.M.
BALCONY AREA	205.91 SQ.FT.	19.13 SQ.M.
TOTAL AREA	2688.18 SQ.FT.	249.74 SQ.M.



FLOOR PLAN 1. All dimensions are in imperial and metric, and measured from finish to finish excluding construction tolerances. 2. All materials, dimensions, and drawings are approximate only. 3. Information is subject to change without notice, at developer's absolute discretion. 4. Actual area may vary from the stated area. 5. Drawings not to scale. 6. All images used are for illustrative purposes only and do not represent the actual size, features, specifications, fittings, and furnishings. 7. The developer reserves the right to make revisions / alterations, at it's absolute discretion, without any liability whatsoever.

# DOWNTOWN DUBAI

GRANDE

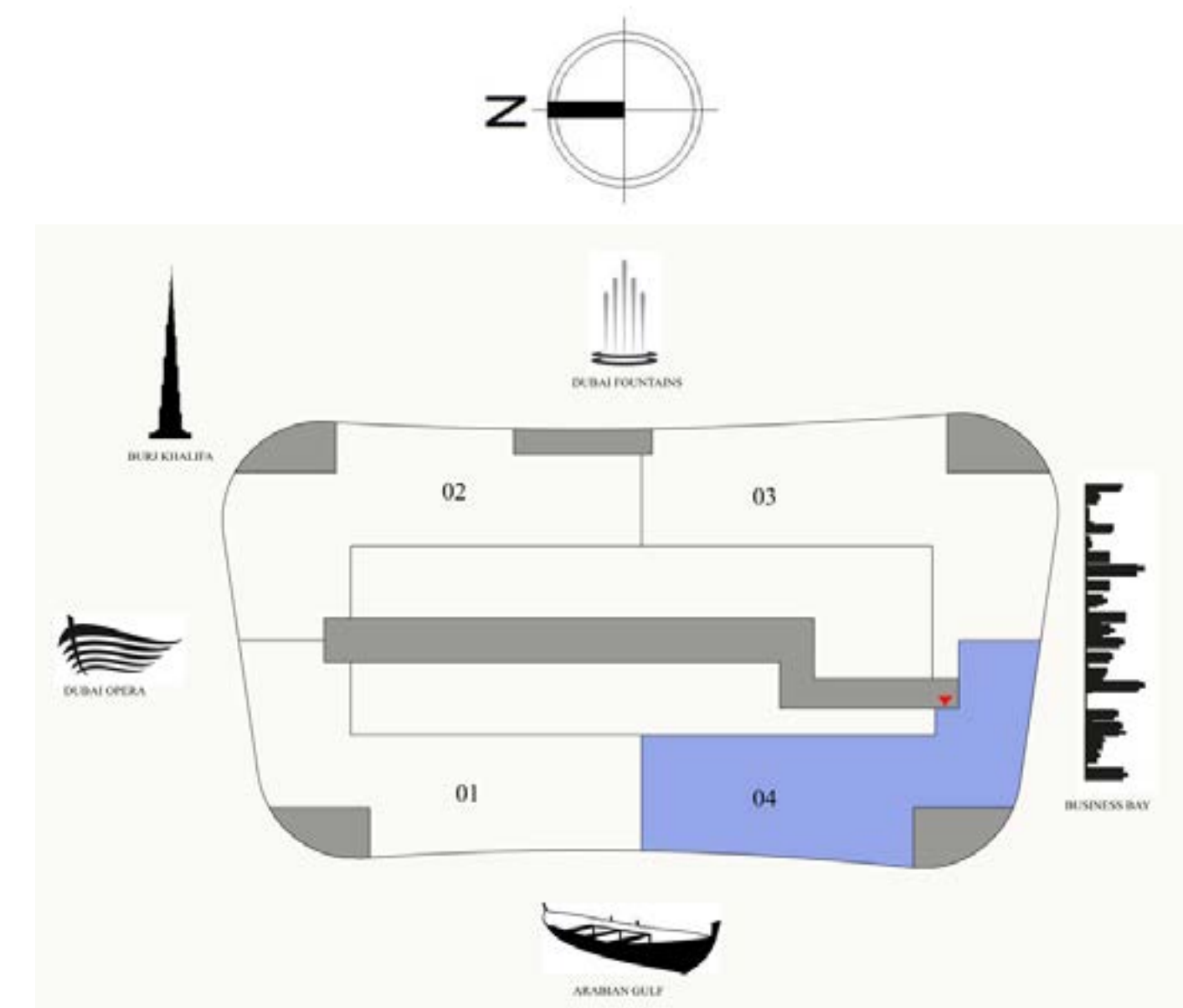
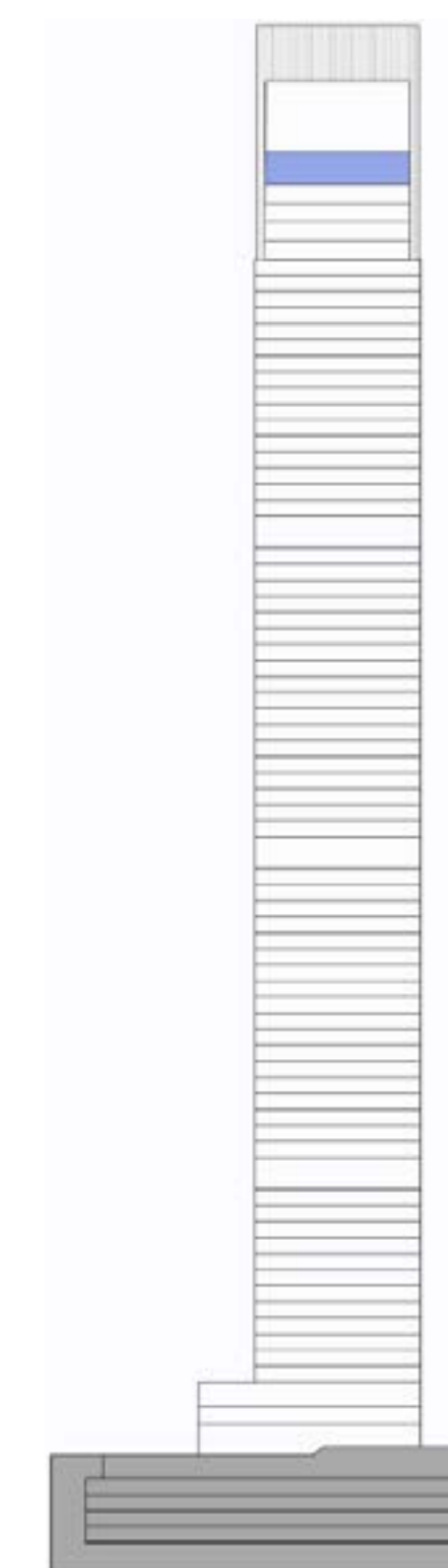
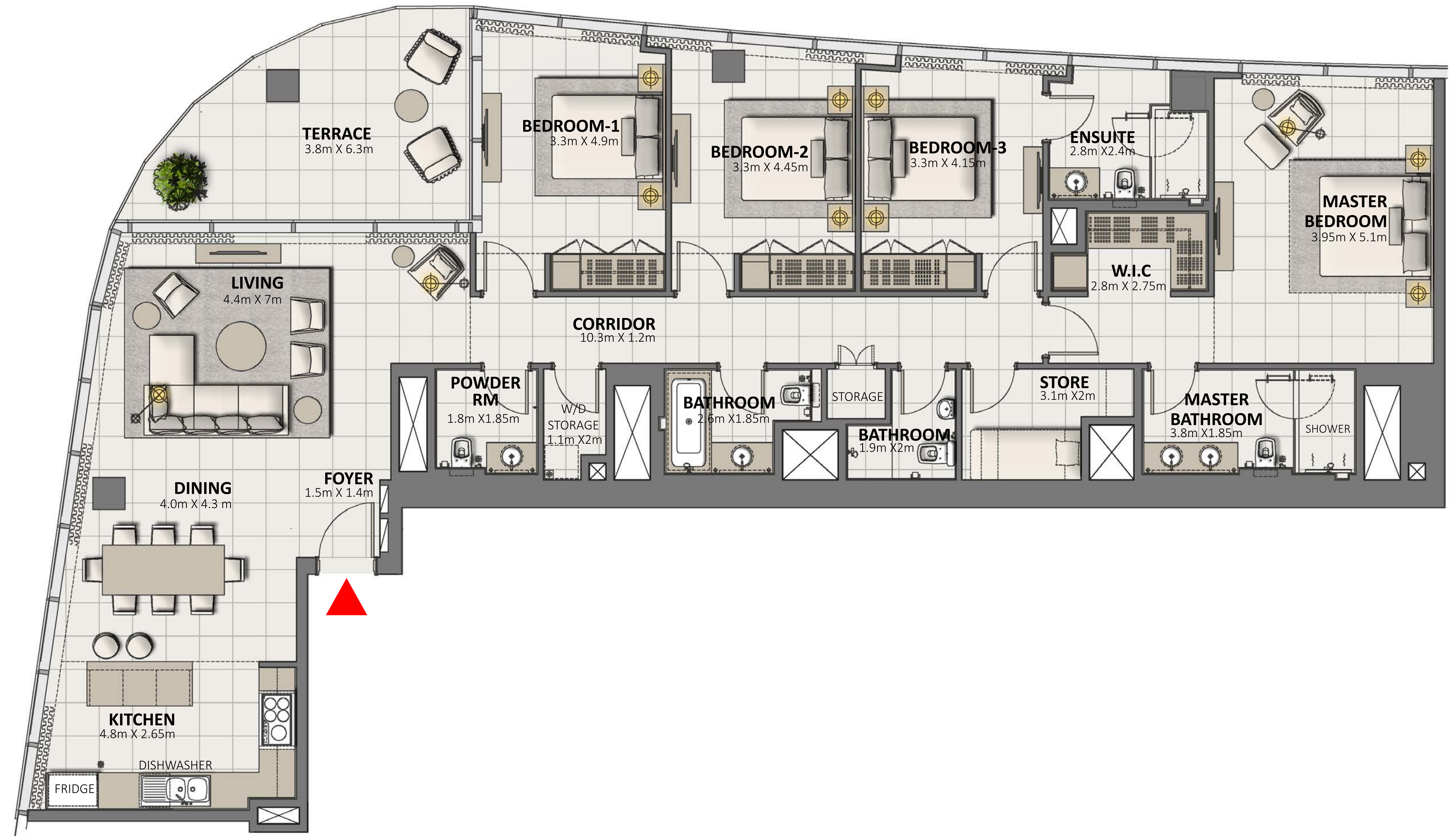
SIGNATURE RESIDENCES

LEVEL PENTHOUSE

4 BEDROOM

UNIT 4

SUITE AREA	2112.42 SQ.FT.	196.25 SQ.M.
BALCONY AREA	205.70 SQ.FT.	19.11 SQ.M.
TOTAL AREA	2318.12 SQ.FT.	215.36 SQ.M.



FLOOR PLAN 1. All dimensions are in imperial and metric, and measured from finish to finish excluding construction tolerances. 2. All materials, dimensions, and drawings are approximate only. 3. Information is subject to change without notice, at developer's absolute discretion. 4. Actual area may vary from the stated area. 5. Drawings not to scale. 6. All images used are for illustrative purposes only and do not represent the actual size, features, specifications, fittings, and furnishings. 7. The developer reserves the right to make revisions / alterations, at it's absolute discretion, without any liability whatsoever.

# DOWNTOWN DUBAI

GRANDE

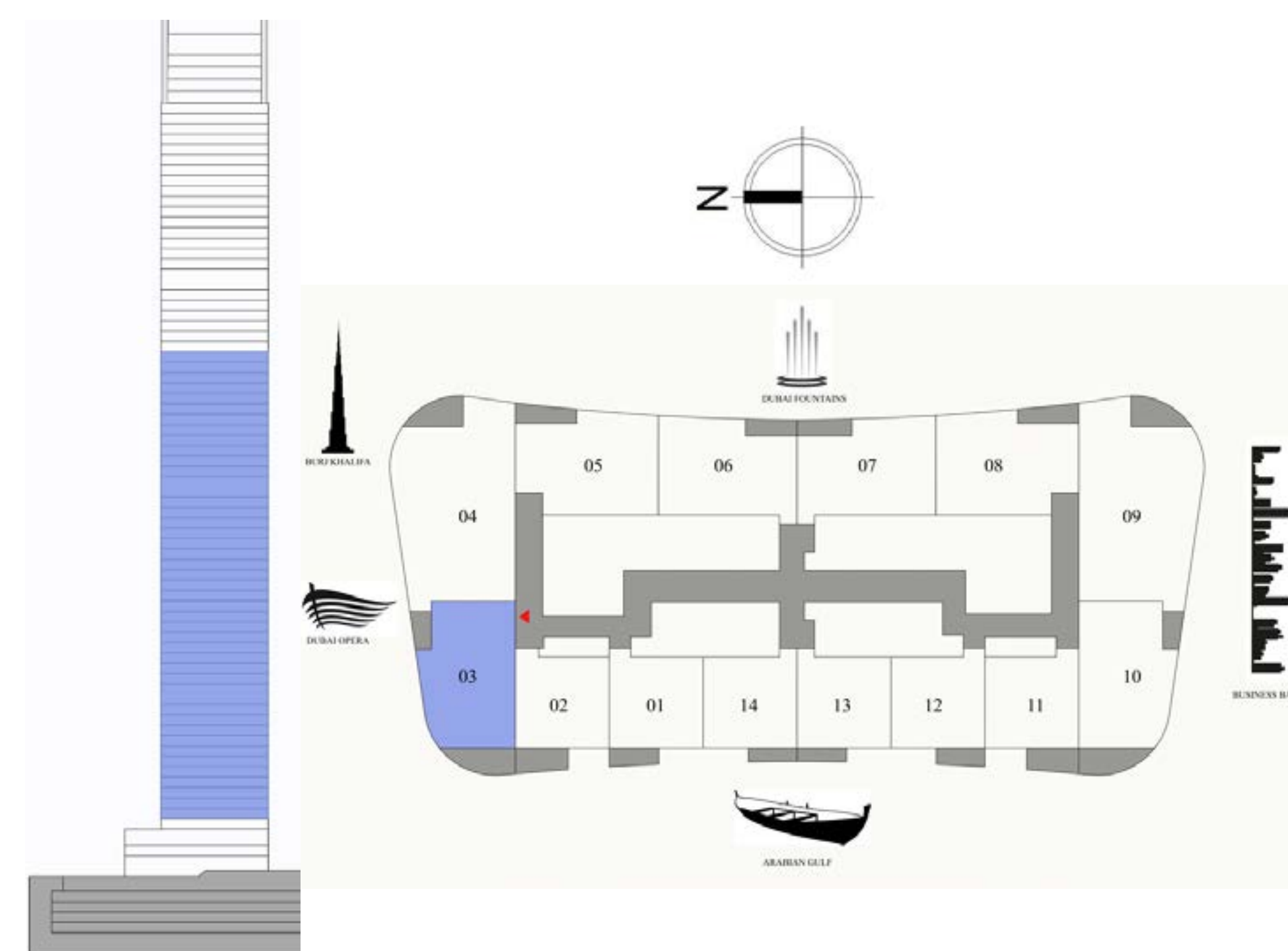
SIGNATURE RESIDENCES

LEVEL 4-52

2 BEDROOM

UNIT 3

SUITE AREA	1083.28 SQ.FT.	100.64 SQ.M.
BALCONY AREA	161.89 SQ.FT.	15.04 SQ.M.
TOTAL AREA	1245.17 SQ.FT.	115.68 SQ.M.



FLOOR PLAN 1. All dimensions are in imperial and metric, and measured from finish to finish excluding construction tolerances. 2. All materials, dimensions, and drawings are approximate only. 3. Information is subject to change without notice, at developer's absolute discretion. 4. Actual area may vary from the stated area. 5. Drawings not to scale. 6. All images used are for illustrative purposes only and do not represent the actual size, features, specifications, fittings, and furnishings. 7. The developer reserves the right to make revisions / alterations, at it's absolute discretion, without any liability whatsoever.

# DOWNTOWN DUBAI

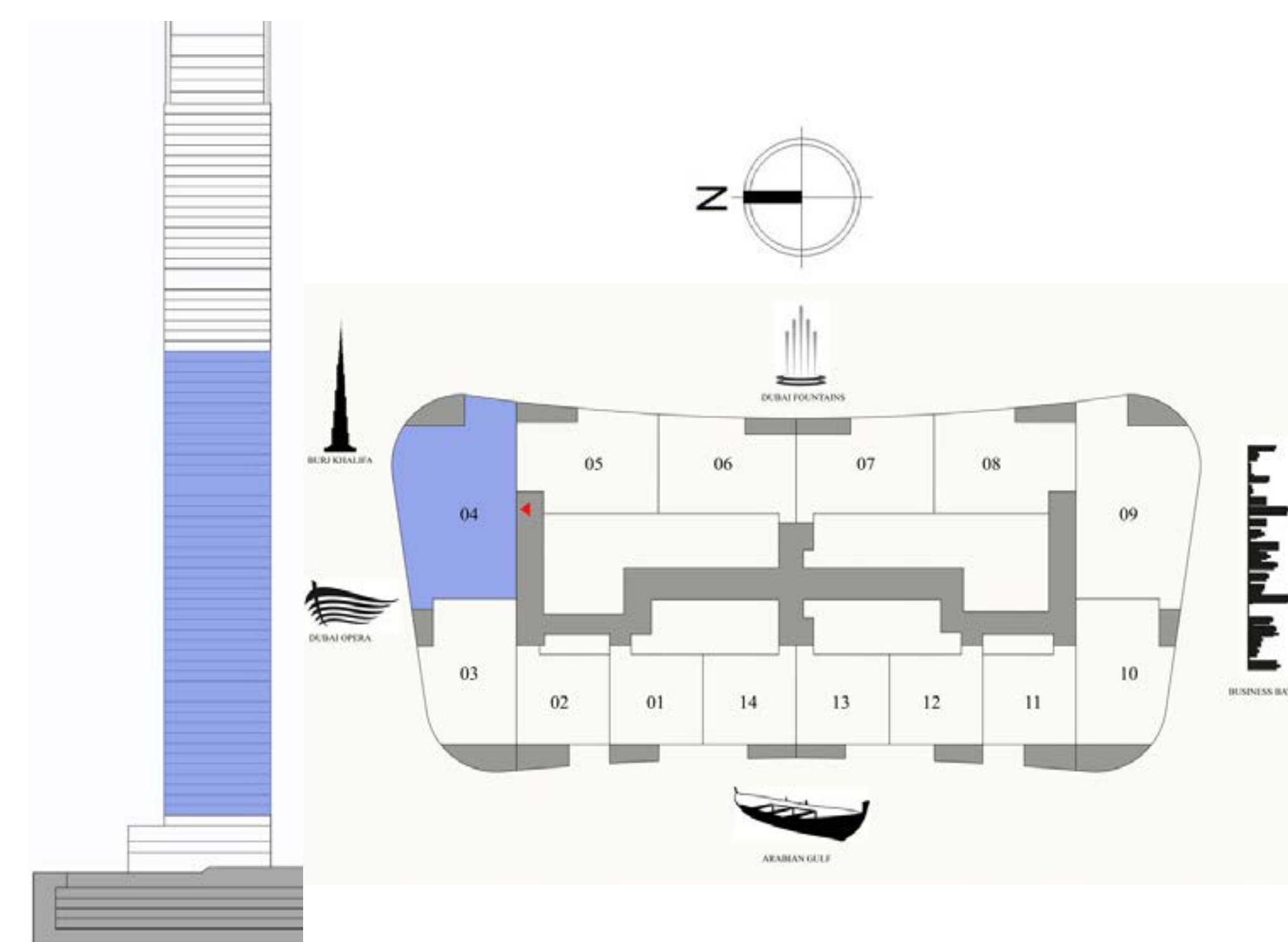
GRANDE  
SIGNATURE RESIDENCES

LEVEL 4-52

## 3 BEDROOM

UNIT 4

SUITE AREA	1756.67 SQ.FT.	163.20 SQ.M.
BALCONY AREA	104.73 SQ.FT.	9.73 SQ.M.
TOTAL AREA	1861.40 SQ.FT.	172.93 SQ.M.



FLOOR PLAN 1. All dimensions are in imperial and metric, and measured from finish to finish excluding construction tolerances. 2. All materials, dimensions, and drawings are approximate only. 3. Information is subject to change without notice, at developer's absolute discretion. 4. Actual area may vary from the stated area. 5. Drawings not to scale. 6. All images used are for illustrative purposes only and do not represent the actual size, features, specifications, fittings, and furnishings. 7. The developer reserves the right to make revisions / alterations, at its absolute discretion, without any liability whatsoever.

# DOWNTOWN DUBAI

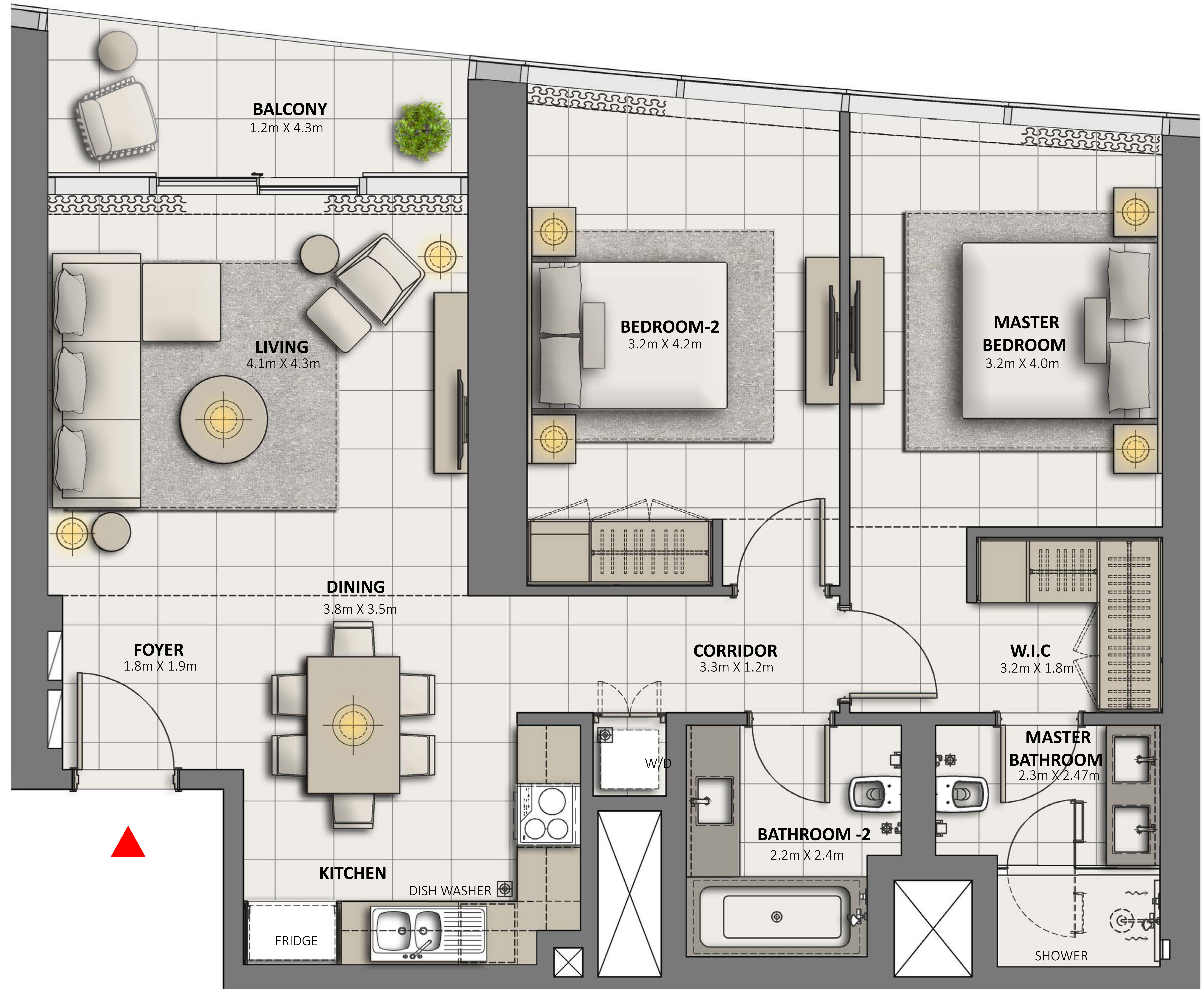
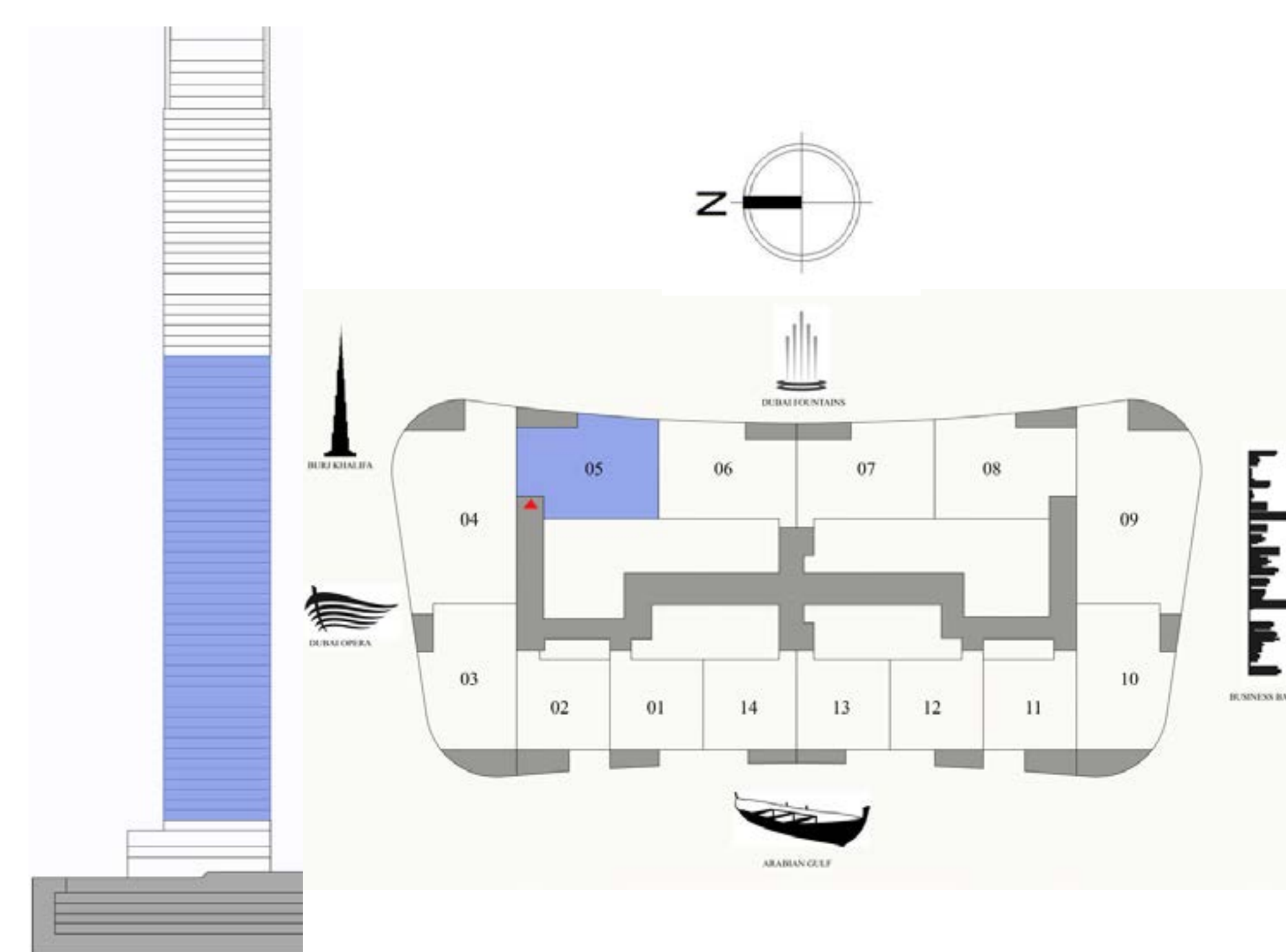
GRANDE  
SIGNATURE RESIDENCES

LEVEL 4-52

## 2 BEDROOM

UNIT 5

SUITE AREA	1124.29 SQ.FT.	104.45 SQ.M.
BALCONY AREA	67.60 SQ.FT.	6.28 SQ.M.
TOTAL AREA	1191.89 SQ.FT.	110.73 SQ.M.



FLOOR PLAN 1. All dimensions are in imperial and metric, and measured from finish to finish excluding construction tolerances. 2. All materials, dimensions, and drawings are approximate only. 3. Information is subject to change without notice, at developer's absolute discretion. 4. Actual area may vary from the stated area. 5. Drawings not to scale. 6. All images used are for illustrative purposes only and do not represent the actual size, features, specifications, fittings, and furnishings. 7. The developer reserves the right to make revisions / alterations, at it's absolute discretion, without any liability whatsoever.

# DOWNTOWN DUBAI

## GRANDE

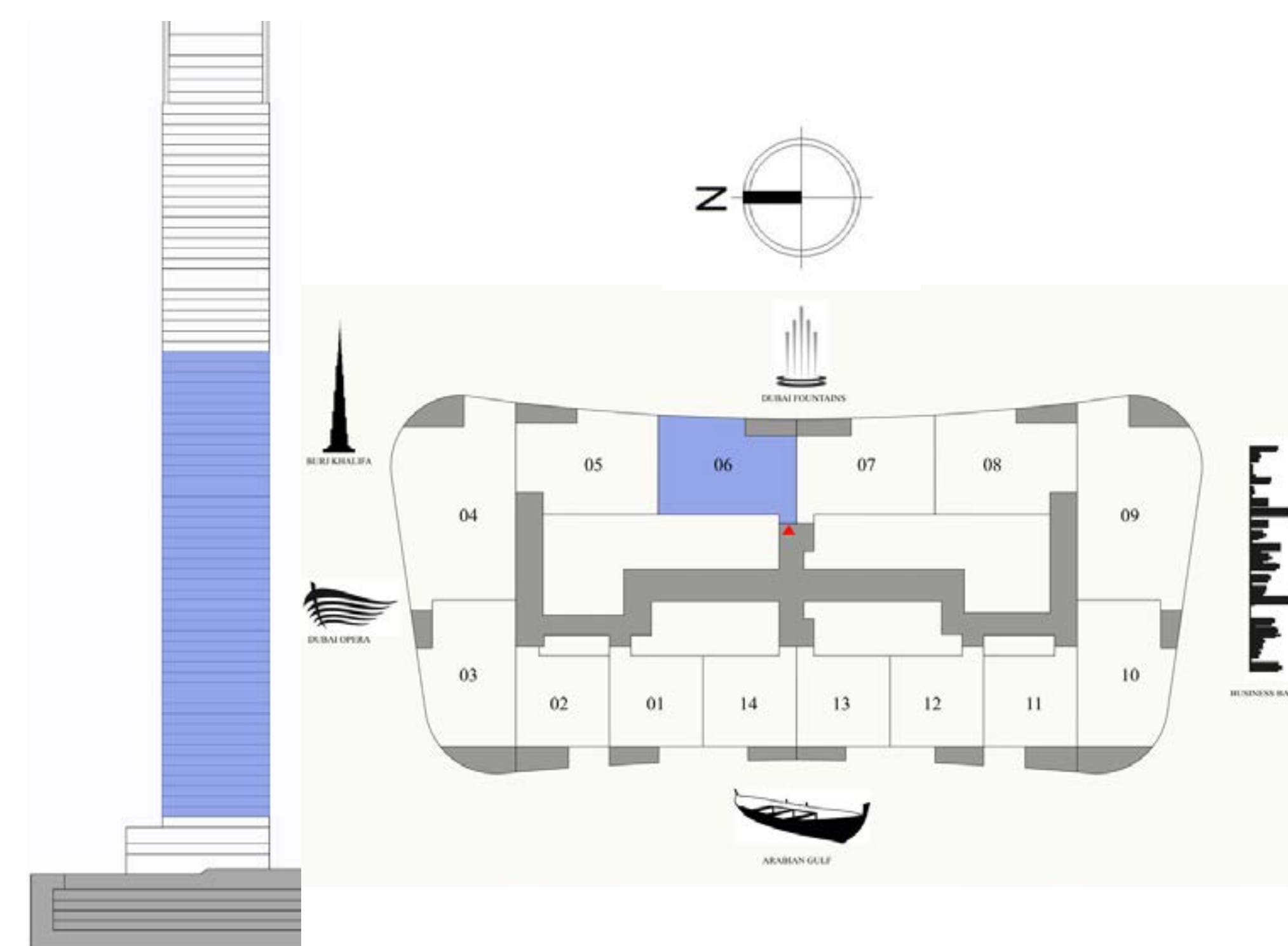
SIGNATURE RESIDENCES

LEVEL 4-52

## 2 BEDROOM

UNIT 6

SUITE AREA	1071.98 SQ.FT.	99.59 SQ.M.
BALCONY AREA	65.12 SQ.FT.	6.05 SQ.M.
TOTAL AREA	1137.10 SQ.FT.	105.64 SQ.M.



FLOOR PLAN 1. All dimensions are in imperial and metric, and measured from finish to finish excluding construction tolerances. 2. All materials, dimensions, and drawings are approximate only. 3. Information is subject to change without notice, at developer's absolute discretion. 4. Actual area may vary from the stated area. 5. Drawings not to scale. 6. All images used are for illustrative purposes only and do not represent the actual size, features, specifications, fittings, and furnishings. 7. The developer reserves the right to make revisions / alterations, at it's absolute discretion, without any liability whatsoever.

# DOWNTOWN DUBAI

## GRANDE

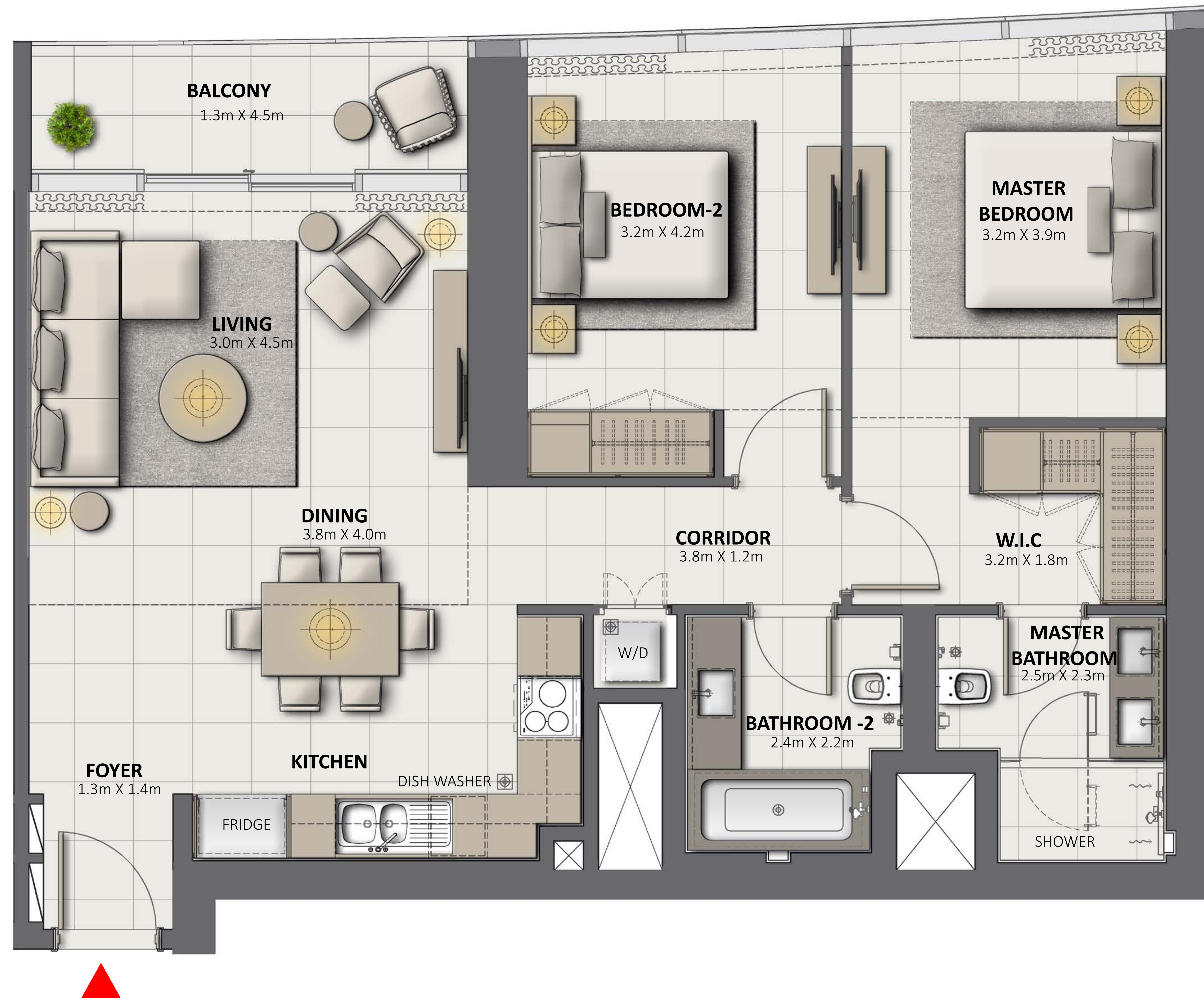
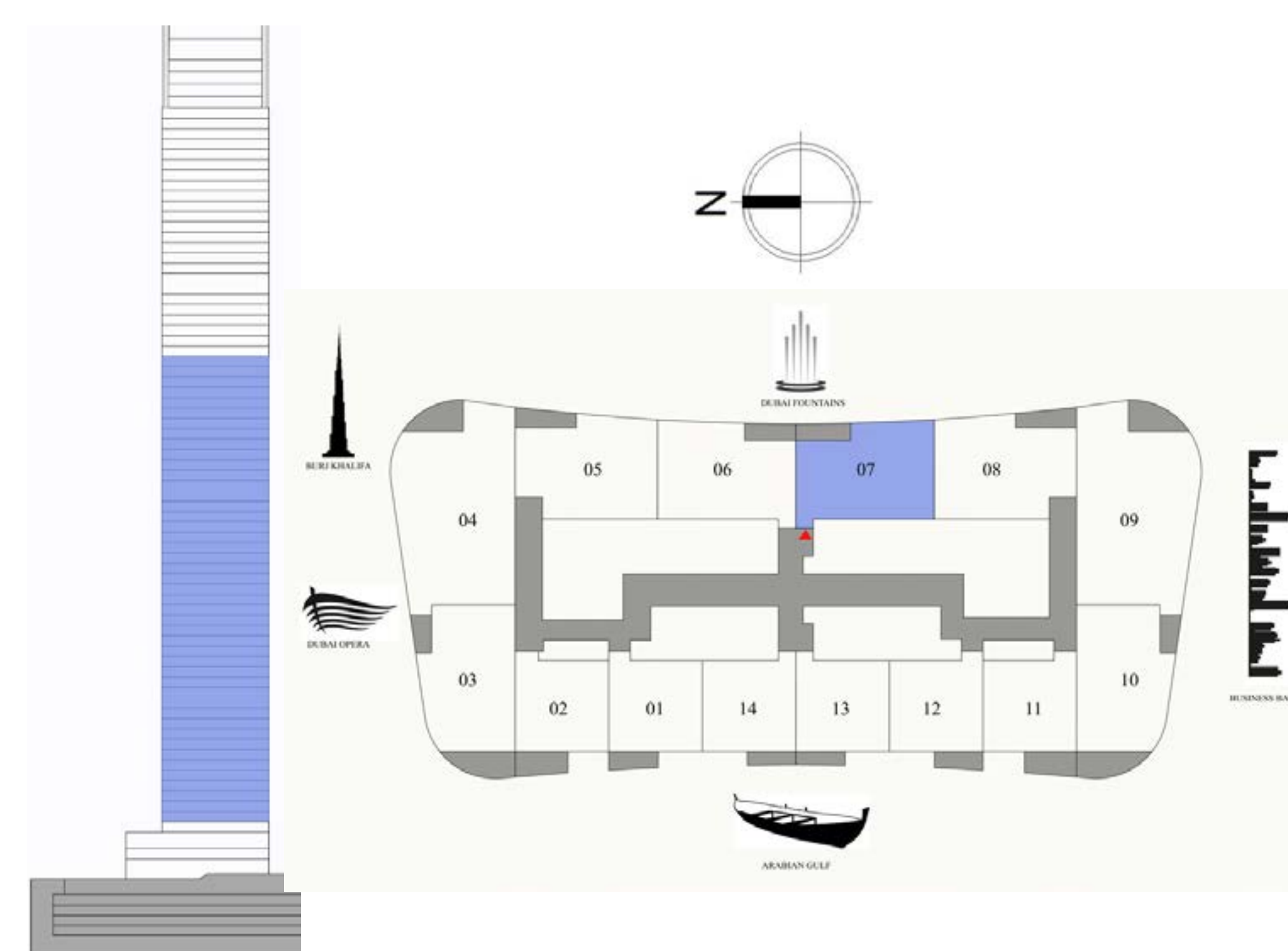
SIGNATURE RESIDENCES

LEVEL 4-52

## 2 BEDROOM

UNIT 7

SUITE AREA	1071.98 SQ.FT.	99.59 SQ.M.
BALCONY AREA	65.12 SQ.FT.	6.05 SQ.M.
TOTAL AREA	1137.10 SQ.FT.	105.64 SQ.M.



FLOOR PLAN 1. All dimensions are in imperial and metric, and measured from finish to finish excluding construction tolerances. 2. All materials, dimensions, and drawings are approximate only. 3. Information is subject to change without notice, at developer's absolute discretion. 4. Actual area may vary from the stated area. 5. Drawings not to scale. 6. All images used are for illustrative purposes only and do not represent the actual size, features, specifications, fittings, and furnishings. 7. The developer reserves the right to make revisions / alterations, at it's absolute discretion, without any liability whatsoever.

# DOWNTOWN DUBAI

GRANDE

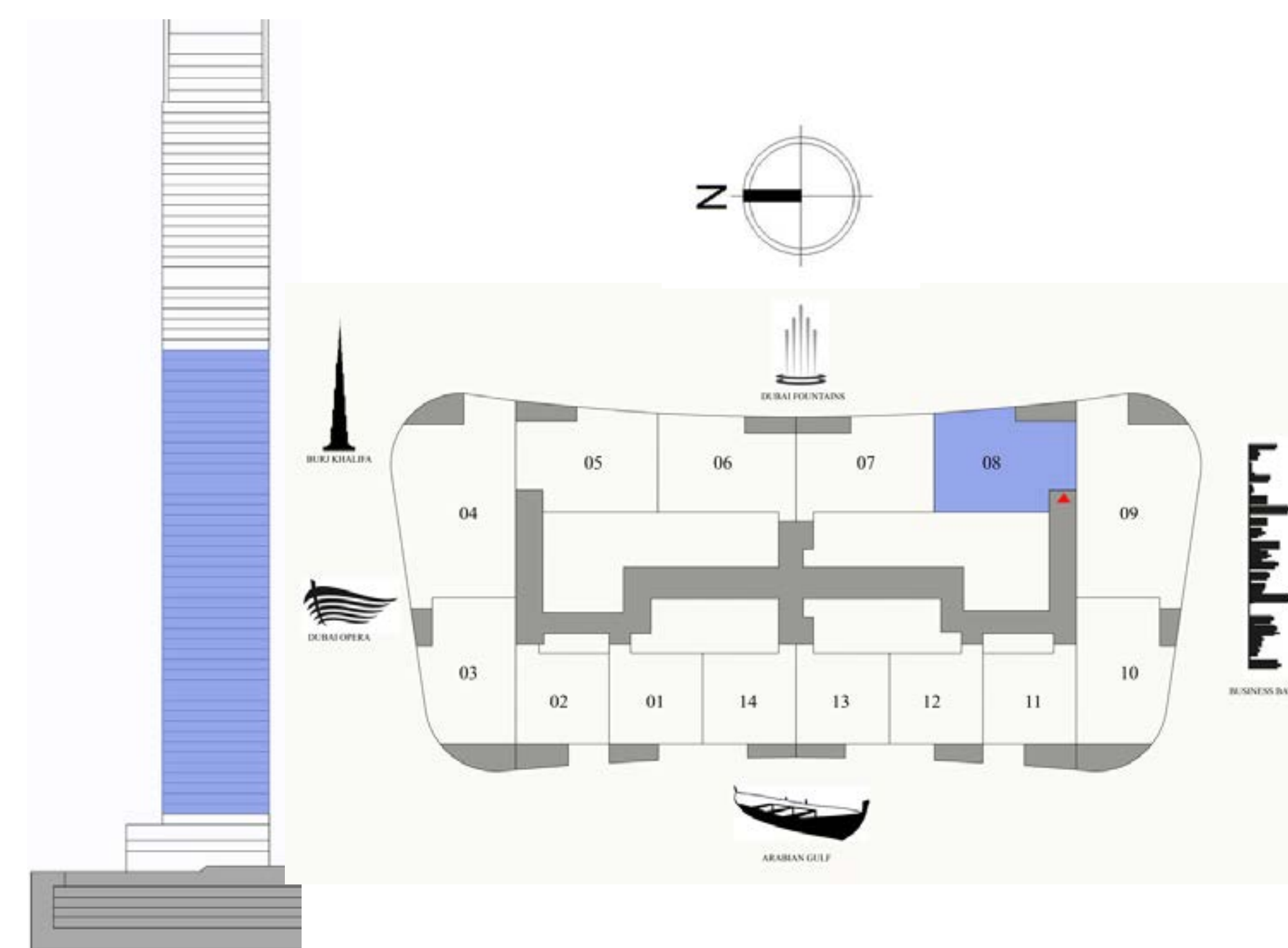
SIGNATURE RESIDENCES

LEVEL 4-52

2 BEDROOM

UNIT 8

SUITE AREA	1124.29 SQ.FT.	104.45 SQ.M.
BALCONY AREA	67.60 SQ.FT.	6.28 SQ.M.
TOTAL AREA	1191.89 SQ.FT.	110.73 SQ.M.



FLOOR PLAN 1. All dimensions are in imperial and metric, and measured from finish to finish excluding construction tolerances. 2. All materials, dimensions, and drawings are approximate only. 3. Information is subject to change without notice, at developer's absolute discretion. 4. Actual area may vary from the stated area. 5. Drawings not to scale. 6. All images used are for illustrative purposes only and do not represent the actual size, features, specifications, fittings, and furnishings. 7. The developer reserves the right to make revisions / alterations, at its absolute discretion, without any liability whatsoever.

# DOWNTOWN DUBAI

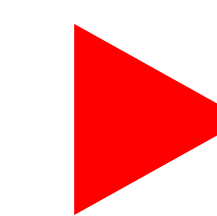
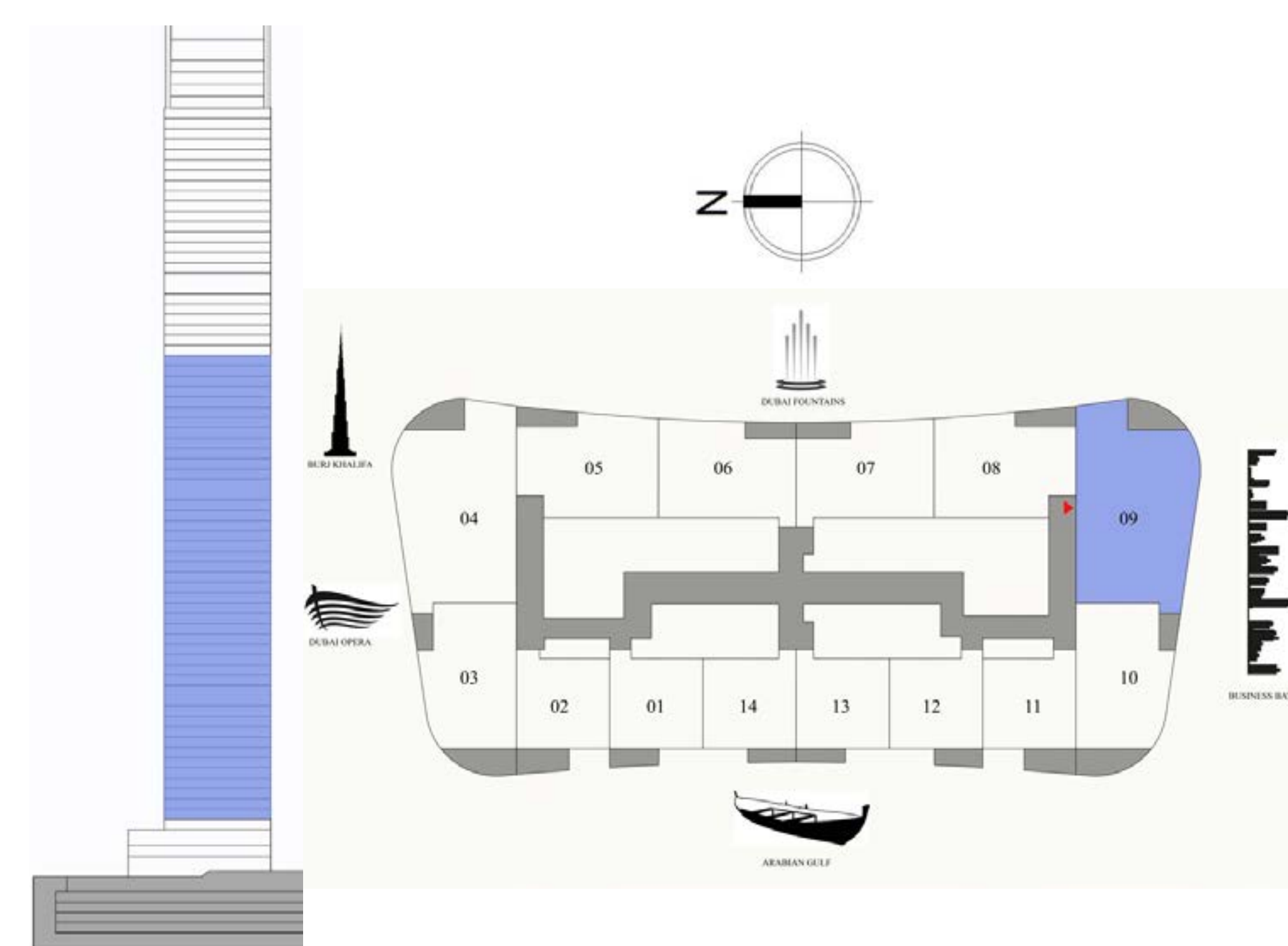
GRANDE  
SIGNATURE RESIDENCES

LEVEL 4-52

## 3 BEDROOM

UNIT 9

SUITE AREA	1756.67 SQ.FT.	163.20 SQ.M.
BALCONY AREA	104.73 SQ.FT.	9.73 SQ.M.
TOTAL AREA	1861.40 SQ.FT.	172.93 SQ.M.



FLOOR PLAN 1. All dimensions are in imperial and metric, and measured from finish to finish excluding construction tolerances. 2. All materials, dimensions, and drawings are approximate only. 3. Information is subject to change without notice, at developer's absolute discretion. 4. Actual area may vary from the stated area. 5. Drawings not to scale. 6. All images used are for illustrative purposes only and do not represent the actual size, features, specifications, fittings, and furnishings. 7. The developer reserves the right to make revisions / alterations, at its absolute discretion, without any liability whatsoever.

# DOWNTOWN DUBAI

## GRANDE

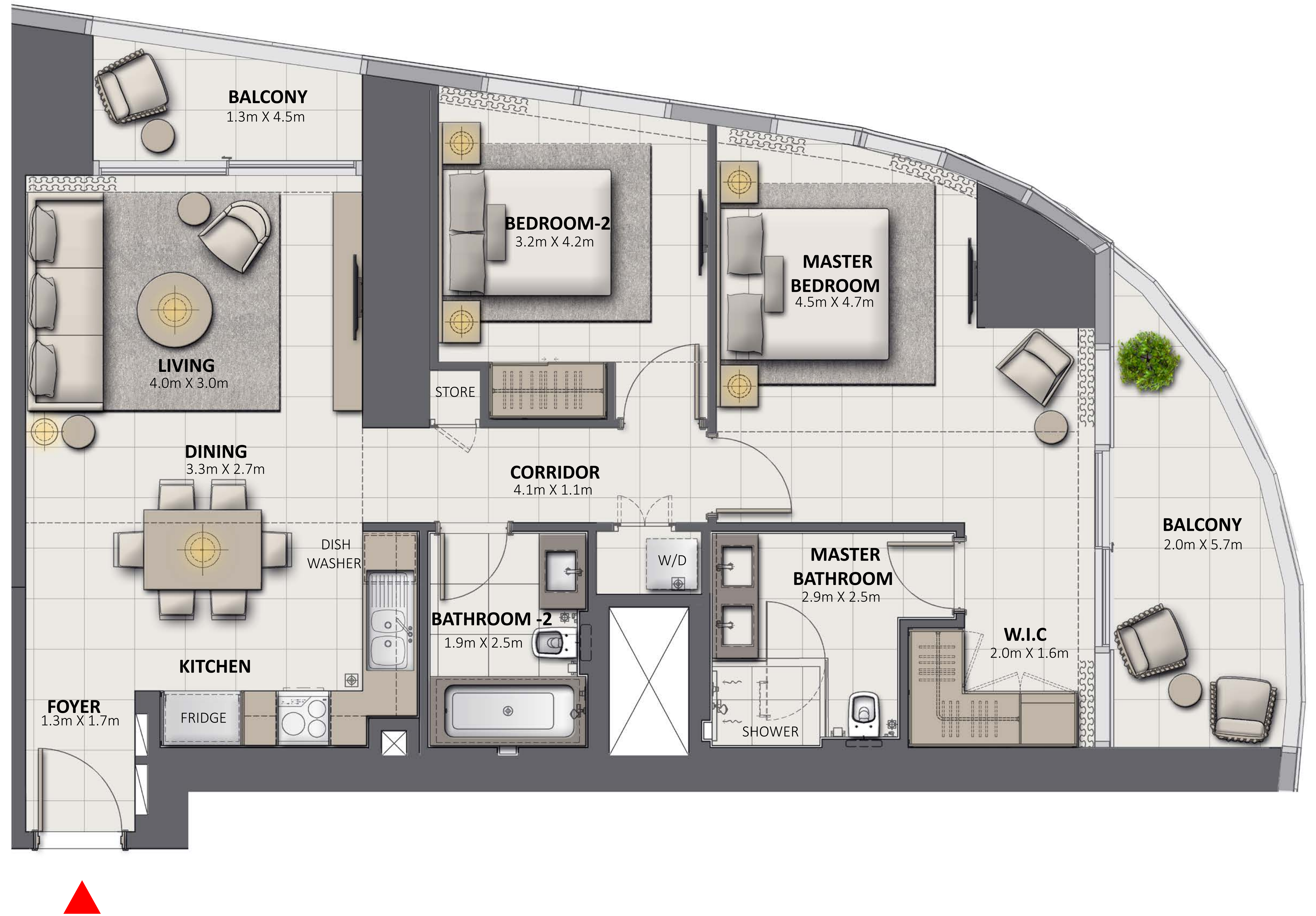
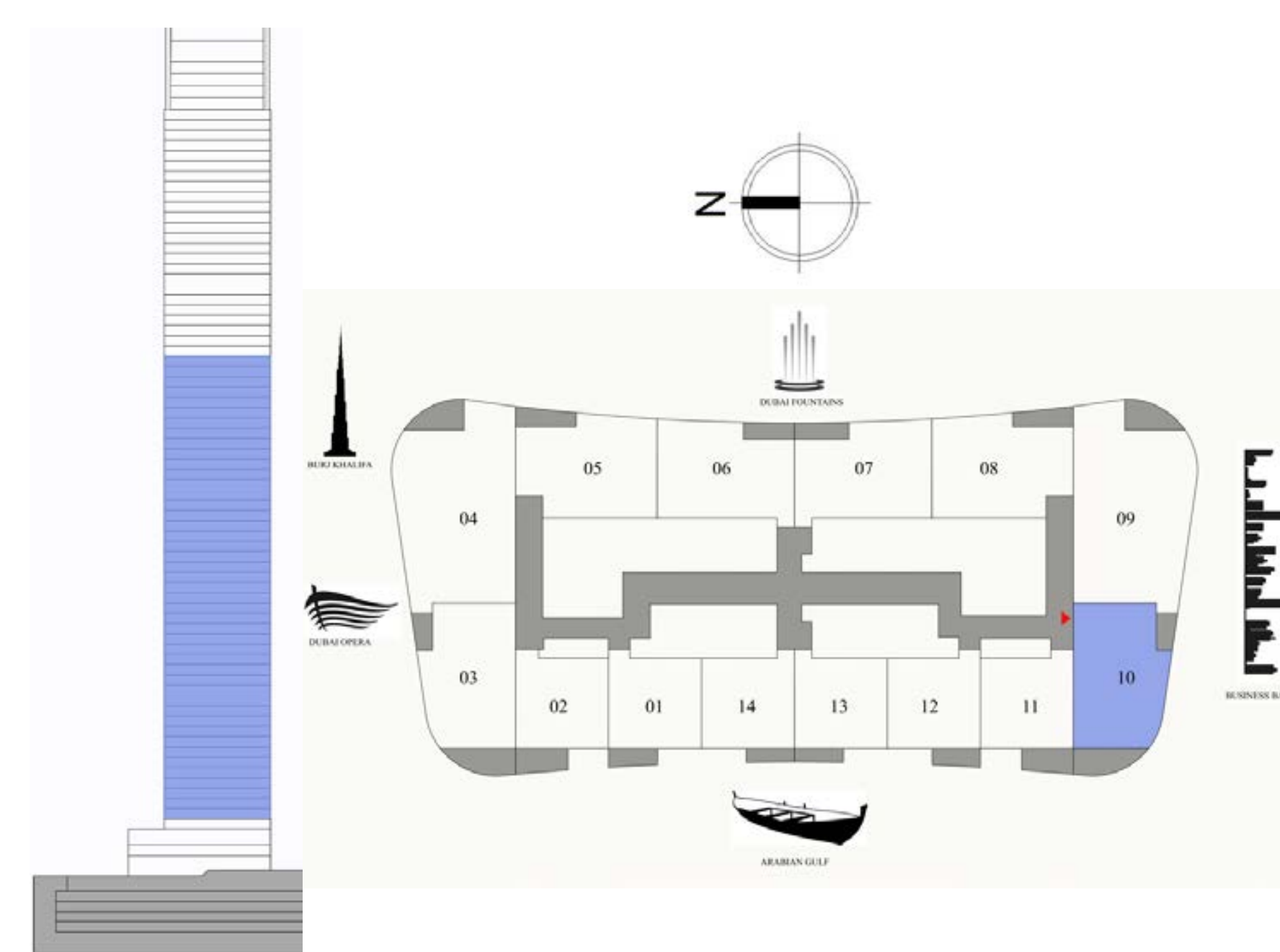
SIGNATURE RESIDENCES

LEVEL 4-52

## 2 BEDROOM

UNIT 10

SUITE AREA	1083.28 SQ.FT.	100.64 SQ.M.
BALCONY AREA	161.89 SQ.FT.	15.04 SQ.M.
TOTAL AREA	1245.17 SQ.FT.	115.68 SQ.M.



FLOOR PLAN 1. All dimensions are in imperial and metric, and measured from finish to finish excluding construction tolerances. 2. All materials, dimensions, and drawings are approximate only. 3. Information is subject to change without notice, at developer's absolute discretion. 4. Actual area may vary from the stated area. 5. Drawings not to scale. 6. All images used are for illustrative purposes only and do not represent the actual size, features, specifications, fittings, and furnishings. 7. The developer reserves the right to make revisions / alterations, at it's absolute discretion, without any liability whatsoever.

# DOWNTOWN DUBAI

## GRANDE

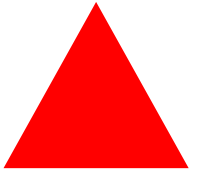
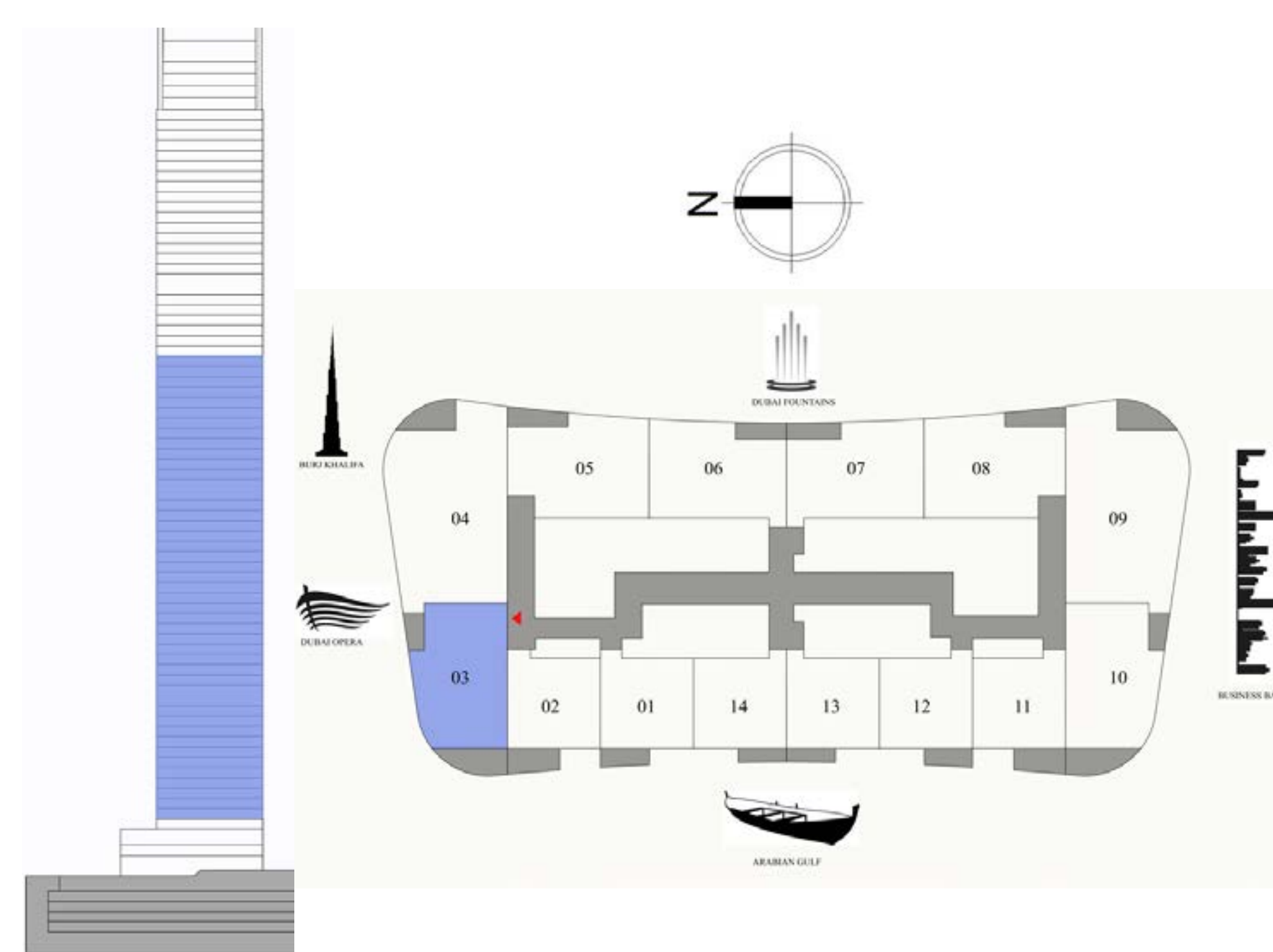
SIGNATURE RESIDENCES

LEVEL 4-52

## 2 BEDROOM

UNIT 3

SUITE AREA	1083.28 SQ.FT.	100.64 SQ.M.
BALCONY AREA	161.89 SQ.FT.	15.04 SQ.M.
TOTAL AREA	1245.17 SQ.FT.	115.68 SQ.M.



FLOOR PLAN 1. All dimensions are in imperial and metric, and measured from finish to finish excluding construction tolerances. 2. All materials, dimensions, and drawings are approximate only. 3. Information is subject to change without notice, at developer's absolute discretion. 4. Actual area may vary from the stated area. 5. Drawings not to scale. 6. All images used are for illustrative purposes only and do not represent the actual size, features, specifications, fittings, and furnishings. 7. The developer reserves the right to make revisions / alterations, at it's absolute discretion, without any liability whatsoever.