

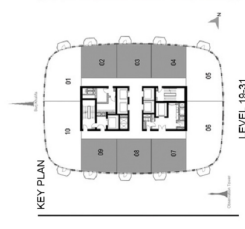
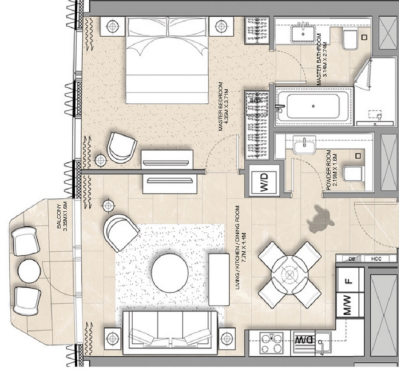


ADDRESS HARBOUR POINT

DUBAI CREEK HARBOUR

SERVICED APARTMENT 1 BEDROOM APARTMENT - T1-1A

LEVEL	UNIT NUMBER	INT. AREA		BALCONY AREA		TOTAL AREA	
		SQM	SQFT	SQM	SQFT	SQM	SQFT
TOWER 1							
10F	1002	62.63	674.14	3.99	32.18	66.62	706.32
	1003	62.71	675.00	3.98	32.14	66.51	705.14
	1004	62.71	675.00	3.98	32.14	66.51	705.14
	1007	63.30	681.36	3.99	32.18	67.29	713.54
	1008	62.69	674.79	3.80	30.14	66.49	704.93
	1009	63.01	668.29	3.99	32.18	67.00	708.47
	1010	62.71	675.00	3.98	32.14	66.51	705.14
	1013	62.64	676.40	3.59	27.67	66.24	714.07
	1014	62.72	675.22	3.73	30.15	66.45	715.37
	1017	63.34	681.79	3.73	30.15	67.07	711.94
20F	2009	62.69	668.22	3.75	30.15	66.44	708.37
	2102-3102	62.81	676.06	4.17	36.31	67.28	724.39
	2103-3103	62.84	676.49	4.20	35.21	67.04	721.61
	2104-3104	62.78	675.11	4.17	36.31	66.95	721.42
21F -31F	2105-3105	63.54	681.29	4.17	36.31	67.71	727.60
	2106-3106	62.81	676.06	4.20	35.21	67.01	721.29
	2107-3107	62.68	668.22	4.17	36.31	66.85	716.53



FLOOR PLAN 1. All dimensions are in imperial and metric, and measured from finish to finish excluding construction tolerances. 2. All materials, dimensions, and drawings are approximate only. 3. Information is subject to change without notice, at developer's absolute discretion. 4. Actual area may vary from the stated area. 5. Drawings not to scale. 6. All images used are for illustrative purposes only and do not represent the actual size, features, specifications, fittings, and furnishings. 7. The developer reserves the right to make revisions / alterations, at its absolute discretion, without any liability whatsoever.



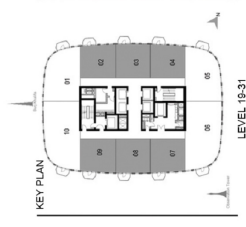
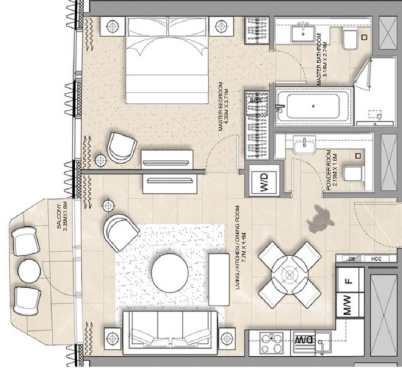


ADDRESS HARBOUR POINT

DUBAI CREEK HARBOUR

SERVICED APARTMENT 1 BEDROOM APARTMENT - T1-1A

LEVEL	UNIT NUMBER	INT. AREA		AREAS		TOTAL AREA
		SQM	SQFT	BALCONY AREA SQM	SQFT	
TOWER 1						
10F	1002	62.63	674.14	3.99	32.18	706.32
	1003	62.71	675.00	3.98	33.14	706.14
	1004	62.71	675.00	3.98	33.14	706.14
	1007	63.30	681.36	3.99	32.18	715.54
	1008	62.69	674.79	3.80	33.14	708.63
20F	2000	63.91	686.29	3.99	32.18	724.39
	2001	62.64	676.40	3.59	32.67	714.67
	2004	62.72	675.22	3.73	40.15	715.27
	2007	63.34	681.79	3.73	40.15	721.94
	2009	62.69	680.22	3.75	40.15	721.94
21F - 30F	2102-3102	62.81	676.06	4.17	48.31	724.19
	2103-3103	62.84	676.49	4.30	45.21	721.61
	2104-3104	62.78	675.11	4.17	48.31	721.61
	2105-3105	63.54	683.78	4.17	48.31	721.61
	2106-3106	62.81	676.06	4.30	45.21	721.29
2109-3109	62.68	680.22	4.17	48.31	716.33	



FLOOR PLAN 1. All dimensions are in imperial and metric, and measured from finish to finish excluding construction tolerances. 2. All materials, dimensions, and drawings are approximate only. 3. Information is subject to change without notice, at developer's absolute discretion. 4. Actual area may vary from the stated area. 5. Drawings not to scale. 6. All images used are for illustrative purposes only and do not represent the actual size, features, specifications, fittings, and furnishings. 7. The developer reserves the right to make revisions / alterations, at its absolute discretion, without any liability whatsoever.



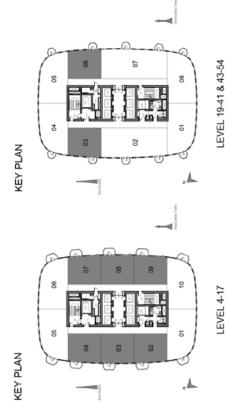
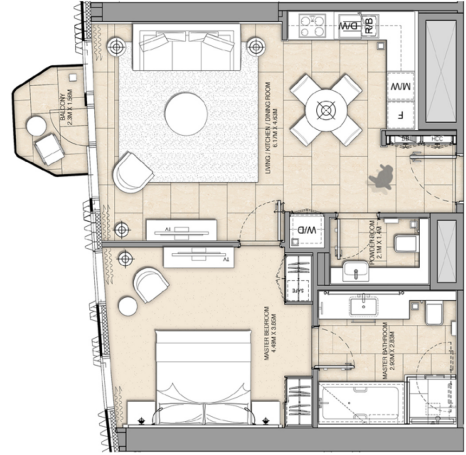


ADDRESS
HARBOUR POINT

DUBAI CREEK
HARBOUR

SERVICED APARTMENT
1 BEDROOM APARTMENT - T2-1A

LEVEL	UNIT NUMBER	UNIT AREA		BALCONY AREA		TOTAL AREA	
		SQM	SQFT	SQM	SQFT	SQM	SQFT
TOWER 2							
04F-15F	402-15E1	67.08	722.65	5.04	54.25	72.12	776.80
	402-15E2	69.52	748.11	5.08	54.90	74.60	803.02
	402-15E3	69.52	748.11	5.08	54.90	74.60	803.02
	402-15E4	69.27	744.85	5.03	54.14	74.30	799.00
	404-15E5	69.71	750.35	4.98	53.60	74.69	803.96
	404-15E6	69.54	747.31	5.04	54.25	74.58	799.00
	404-15E7	69.54	747.31	5.04	54.25	74.58	799.00
	404-15E8	69.54	747.31	5.04	54.25	74.58	799.00
	404-15E9	69.54	747.31	5.04	54.25	74.58	799.00
	404-15E10	69.54	747.31	5.04	54.25	74.58	799.00
06F	1904	67.90	728.57	4.15	44.67	72.05	771.24
	1907	68.15	733.37	4.15	44.67	72.30	775.24
	1910	68.15	733.37	4.15	44.67	72.30	775.24
	1913	67.80	728.85	4.15	44.67	71.95	766.66
	1916	67.80	728.85	4.15	44.67	71.95	766.66
	1919	67.80	728.85	4.15	44.67	71.95	766.66
	1922	67.80	728.85	4.15	44.67	71.95	766.66
	1925	67.80	728.85	4.15	44.67	71.95	766.66
	1928	67.80	728.85	4.15	44.67	71.95	766.66
	1931	67.80	728.85	4.15	44.67	71.95	766.66
17F	1702	67.08	722.65	3.46	34.01	70.54	756.66
	1705	69.52	748.11	3.16	34.01	72.68	782.13
	1708	69.52	748.11	3.16	34.01	72.68	782.13
	1711	69.52	748.11	3.16	34.01	72.68	782.13
	1714	69.52	748.11	3.16	34.01	72.68	782.13
	1717	69.52	748.11	3.16	34.01	72.68	782.13
	1720	69.52	748.11	3.16	34.01	72.68	782.13
	1723	69.52	748.11	3.16	34.01	72.68	782.13
	1726	69.52	748.11	3.16	34.01	72.68	782.13
	1729	69.52	748.11	3.16	34.01	72.68	782.13
19F	1906	69.67	749.93	3.16	34.01	72.83	783.84
	1909	69.67	749.93	3.16	34.01	72.83	783.84
	1912	69.67	749.93	3.16	34.01	72.83	783.84
	1915	69.67	749.93	3.16	34.01	72.83	783.84
	1918	69.67	749.93	3.16	34.01	72.83	783.84
	1921	69.67	749.93	3.16	34.01	72.83	783.84
	1924	69.67	749.93	3.16	34.01	72.83	783.84
	1927	69.67	749.93	3.16	34.01	72.83	783.84
	1930	69.67	749.93	3.16	34.01	72.83	783.84
	1933	69.67	749.93	3.16	34.01	72.83	783.84
20F	2003	67.51	726.66	4.15	44.67	71.66	771.35
	2006	68.12	733.24	4.15	44.67	72.27	777.91
	2009	68.12	733.24	4.15	44.67	72.27	777.91
	2012	67.51	726.66	4.15	44.67	71.66	771.35
	2015	67.51	726.66	4.15	44.67	71.66	771.35
	2018	67.51	726.66	4.15	44.67	71.66	771.35
	2021	67.51	726.66	4.15	44.67	71.66	771.35
	2024	67.51	726.66	4.15	44.67	71.66	771.35
	2027	67.51	726.66	4.15	44.67	71.66	771.35
	2030	67.51	726.66	4.15	44.67	71.66	771.35
31F-41F	4302-3203	67.51	726.66	5.04	54.25	72.55	780.93
	4302-3204	68.12	733.24	5.04	54.25	73.16	786.93
	4302-3205	68.12	733.24	5.04	54.25	73.16	786.93
	4302-3206	68.12	733.24	5.04	54.25	73.16	786.93
	4302-3207	68.12	733.24	5.04	54.25	73.16	786.93
	4302-3208	68.12	733.24	5.04	54.25	73.16	786.93
	4302-3209	68.12	733.24	5.04	54.25	73.16	786.93
	4302-3210	68.12	733.24	5.04	54.25	73.16	786.93
	4302-3211	68.12	733.24	5.04	54.25	73.16	786.93
	4302-3212	68.12	733.24	5.04	54.25	73.16	786.93
54F	5403	66.95	720.65	5.04	54.25	71.99	764.00
	5405	67.96	727.22	5.04	54.25	72.60	781.47



FLOOR PLAN 1. All dimensions are in imperial and metric, and measured from finish to finish excluding construction tolerances. 2. All materials, dimensions, and drawings are approximate only. 3. Information is subject to change without notice, at developer's absolute discretion. 4. Actual area may vary from the stated area. 5. Drawings not to scale. 6. All images used are for illustrative purposes only and do not represent the actual size, features, specifications, fittings, and furnishings. 7. The developer reserves the right to make revisions / alterations, at its absolute discretion, without any liability whatsoever.



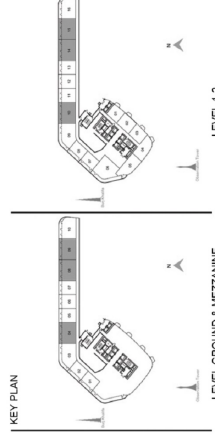
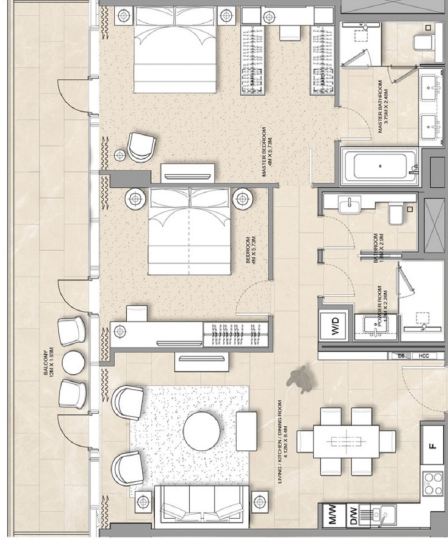


ADDRESS HARBOUR POINT

DUBAI CREEK HARBOUR

VILLAS APARTMENT 2 BEDROOM APARTMENT - PD-2D

LEVEL	UNIT NUMBER		AREA		TOTAL AREA		
	SQM	SQFT	SQM	SQFT	SQM	SQFT	
PODIUM	GROUND						
	GH4	104.16	1121.17	24.30	260.49	178.36	1914.66
	GH8	104.16	1121.17	24.30	260.49	178.36	1914.66
	M04	104.16	1121.17	24.30	260.49	178.36	1914.66
	MEZZANINE						
	M08	104.16	1121.17	24.30	260.49	178.36	1914.66
	M09	104.16	1121.17	24.30	260.49	178.36	1914.66
	M10	104.16	1121.17	24.30	260.49	178.36	1914.66
	M11	104.16	1121.17	24.30	260.49	178.36	1914.66
	M14	104.16	1121.17	24.30	260.49	178.36	1914.66
	P.L.I						
	115	104.16	1121.17	24.30	260.49	178.36	1914.66
210	104.16	1121.17	23.84	256.61	178.00	1877.78	
215	104.16	1121.17	23.84	256.61	178.00	1877.78	



FLOOR PLAN 1. All dimensions are in imperial and metric, and measured from finish to finish excluding construction tolerances. 2. All materials, dimensions, and drawings are approximate only. 3. Information is subject to change without notice, at developer's absolute discretion. 4. Actual area may vary from the stated area. 5. Drawings not to scale. 6. All images used are for illustrative purposes only and do not represent the actual size, features, specifications, fittings, and furnishings. 7. The developer reserves the right to make revisions / alterations, at its absolute discretion, without any liability whatsoever.



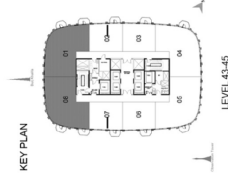
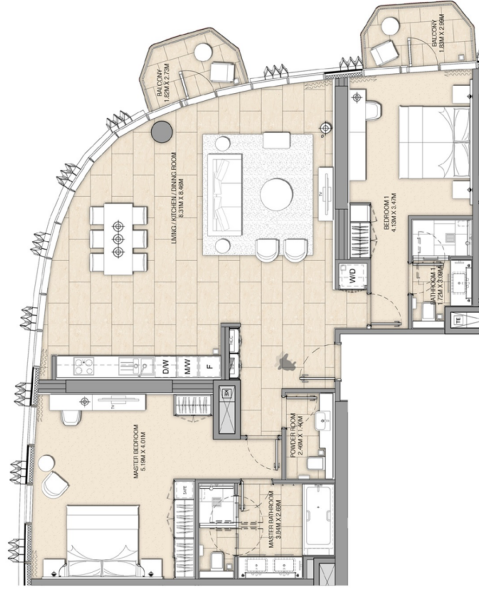


**ADDRESS
HARBOUR POINT**

**DUBAI CREEK
HARBOUR**

**SERVICED APARTMENT
2 BEDROOM APARTMENT - T1-2D**

LEVEL	UNIT NUMBER	UNIT AREA		BALCONY AREA		ABRAN		TOTAL AREA	
		SQM	SQFT	SQM	SQFT	SQM	SQFT	SQM	SQFT
TOWER 1									
05F	4201	118.8	1,281.04	8.84	95.15	127.64	1,509.20		
4305	188.5	1,200.28	8.57	95.48	127.32	1,505.75			
4405	188.5	1,200.28	8.57	95.48	127.32	1,505.75			
4505	188.5	1,200.28	8.57	95.48	127.32	1,505.75			
4605	188.5	1,200.28	8.57	95.48	127.32	1,505.75			
4705	188.5	1,200.28	8.57	95.48	127.32	1,505.75			
4805	188.5	1,200.28	8.57	95.48	127.32	1,505.75			
4905	188.5	1,200.28	8.57	95.48	127.32	1,505.75			



FLOOR PLAN 1. All dimensions are in imperial and metric, and measured from finish to finish excluding construction tolerances. 2. All materials, dimensions, and drawings are approximate only. 3. Information is subject to change without notice, at developer's absolute discretion. 4. Actual area may vary from the stated area. 5. Drawings not to scale. 6. All images used are for illustrative purposes only and do not represent the actual size, features, specifications, fittings, and furnishings. 7. The developer reserves the right to make revisions / alterations, at its absolute discretion, without any liability whatsoever.



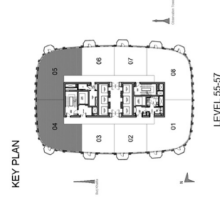
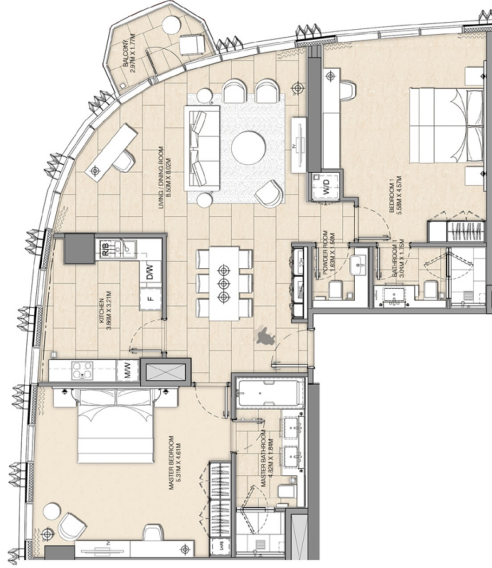


ADDRESS
HARBOUR POINT

DUBAI CREEK
HARBOUR

SERVICED APARTMENT
2 BEDROOM APARTMENT - T2-2B

LEVEL	UNIT NUMBER	UNIT AREA		BALCONY AREA		TOTAL AREA	
		SQM	SQFT	SQM	SQFT	SQM	SQFT
TOWER 2							
55F	5504	178.81	1,905.51	4.2	45.32	183.02	1,950.83
55F	5505	179.24	1,911.14	4.28	45.64	183.52	1,956.76
55F	5506	179.24	1,911.14	4.28	45.64	183.52	1,956.76
55F	5507	178.81	1,905.51	4.2	45.32	183.02	1,950.83
55F	5508	179.24	1,911.14	4.28	45.64	183.52	1,956.76



FLOOR PLAN 1. All dimensions are in imperial and metric, and measured from finish to finish excluding construction tolerances. 2. All materials, dimensions, and drawings are approximate only. 3. Information is subject to change without notice, at developer's absolute discretion. 4. Actual area may vary from the stated area. 5. Drawings not to scale. 6. All images used are for illustrative purposes only and do not represent the actual size, features, specifications, fittings, and furnishings. 7. The developer reserves the right to make revisions / alterations, at its absolute discretion, without any liability whatsoever.



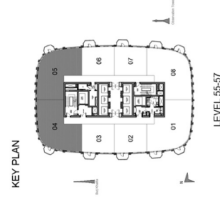
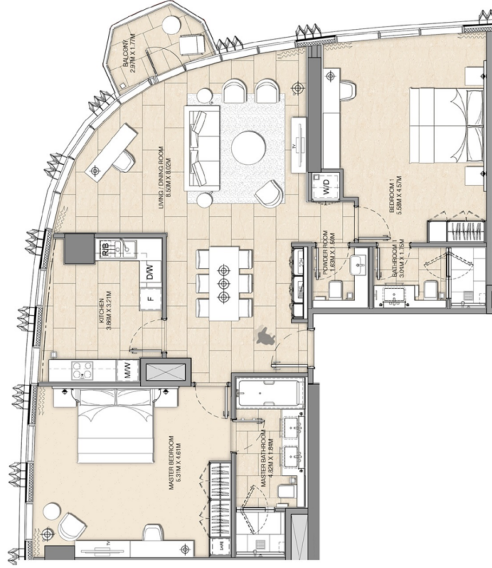


ADDRESS
HARBOUR POINT

DUBAI CREEK
HARBOUR

SERVICED APARTMENT
2 BEDROOM APARTMENT - T2-2B

LEVEL	UNIT NUMBER	UNIT AREA		BALCONY AREA		TOTAL AREA	
		SQM	SQFT	SQM	SQFT	SQM	SQFT
TOWER 2							
55F	5504	178.81	1,905.51	4.2	45.32	183.02	1,950.83
55F	5505	179.24	1,911.14	4.28	45.64	183.92	1,956.76
55F	5506	179.24	1,911.14	4.28	45.64	183.92	1,956.76
55F	5507	178.81	1,905.51	4.2	45.32	183.02	1,950.83
55F	5508	179.24	1,911.14	4.28	45.64	183.92	1,956.76



FLOOR PLAN 1. All dimensions are in imperial and metric, and measured from finish to finish excluding construction tolerances. 2. All materials, dimensions, and drawings are approximate only. 3. Information is subject to change without notice, at developer's absolute discretion. 4. Actual area may vary from the stated area. 5. Drawings not to scale. 6. All images used are for illustrative purposes only and do not represent the actual size, features, specifications, fittings, and furnishings. 7. The developer reserves the right to make revisions / alterations, at its absolute discretion, without any liability whatsoever.



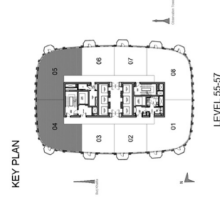
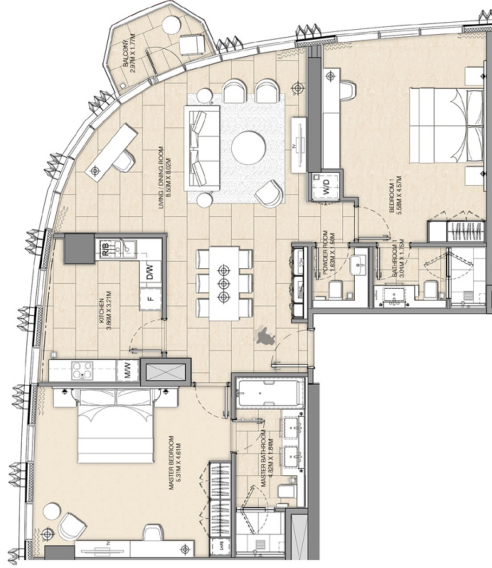


ADDRESS
HARBOUR POINT

DUBAI CREEK
HARBOUR

SERVICED APARTMENT
2 BEDROOM APARTMENT - T2-2B

LEVEL	UNIT NUMBER	UNIT AREA		BALCONY AREA		TOTAL AREA	
		SQM	SQFT	SQM	SQFT	SQM	SQFT
TOWER 2							
55F	5504	178.81	1,905.51	4.2	45.32	183.02	1,950.83
55F	5505	179.24	1,911.14	4.28	45.64	183.92	1,956.76
55F	5506	179.24	1,911.14	4.28	45.64	183.92	1,956.76
55F	5507	178.81	1,905.51	4.2	45.32	183.02	1,950.83
55F	5508	179.24	1,911.14	4.28	45.64	183.92	1,956.76



FLOOR PLAN 1. All dimensions are in imperial and metric, and measured from finish to finish excluding construction tolerances. 2. All materials, dimensions, and drawings are approximate only. 3. Information is subject to change without notice, at developer's absolute discretion. 4. Actual area may vary from the stated area. 5. Drawings not to scale. 6. All images used are for illustrative purposes only and do not represent the actual size, features, specifications, fittings, and furnishings. 7. The developer reserves the right to make revisions / alterations, at its absolute discretion, without any liability whatsoever.



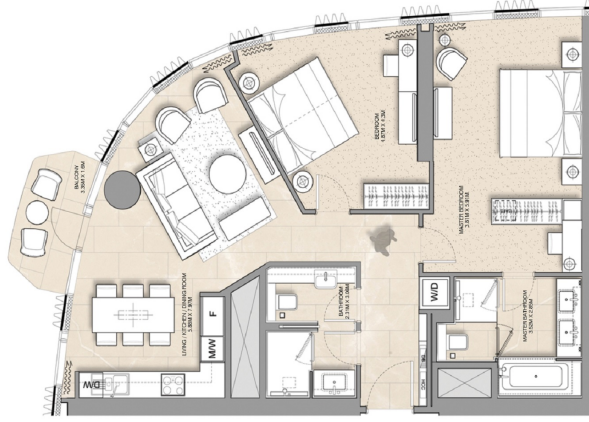


ADDRESS
HARBOUR POINT

DUBAI CREEK
HARBOUR

SERVICED APARTMENT
2 BEDROOM APARTMENT - T1-2A

LEVEL	UNIT NUMBER	INT. AREA		BALCONY AREA		TOTAL AREA	
		SQM	SQFT	SQM	SQFT	SQM	SQFT
TOWER 1							
10F	1001	99.83	1074.56	3.16	34.01	103.99	1108.57
	1005	99.83	1074.56	3.16	34.01	103.99	1108.57
20F	2001	99.83	1074.56	3.16	34.01	103.99	1108.57
	2005	99.83	1074.56	3.16	34.01	103.99	1108.57
21F-31F	2101-3101	99.88	1074.88	4.63	49.84	104.51	1124.22
	2105-3105	99.83	1074.56	4.63	49.84	104.46	1124.40
	3201-4101	100.04	1076.82	4.63	49.84	104.67	1126.65



FLOOR PLAN 1. All dimensions are in imperial and metric, and measured from finish to finish excluding construction tolerances. 2. All materials, dimensions, and drawings are approximate only. 3. Information is subject to change without notice, at developer's absolute discretion. 4. Actual area may vary from the stated area. 5. Drawings not to scale. 6. All images used are for illustrative purposes only and do not represent the actual size, features, specifications, fittings, and furnishings. 7. The developer reserves the right to make revisions / alterations, at its absolute discretion, without any liability whatsoever.



DUBAI
HOLDING

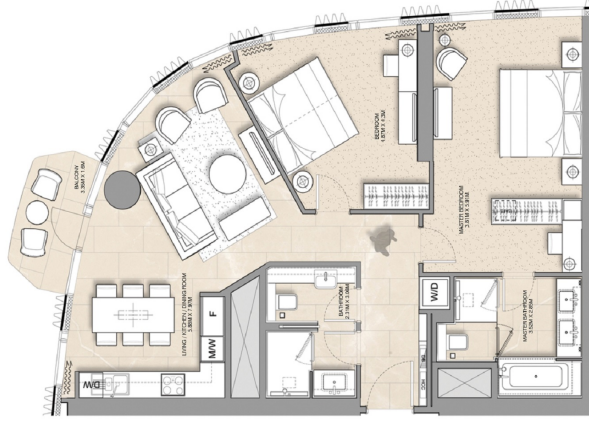


ADDRESS
HARBOUR POINT

DUBAI CREEK
HARBOUR

SERVICED APARTMENT
2 BEDROOM APARTMENT - T1-2A

LEVEL	UNIT NUMBER	INT. AREA		AREAS		TOTAL AREA	
		SQM	SQFT	BALCONY AREA SQM	SQFT	SQM	SQFT
TOWER 1							
10F	1001	99.83	1074.56	3.16	34.01	103.99	1108.67
	1005	99.83	1074.56	3.16	34.01	103.99	1108.67
20F	2001	99.83	1074.56	3.16	34.01	103.99	1108.67
	2005	99.83	1074.56	3.16	34.01	103.99	1108.67
31F-31F	3101-3101	99.88	1074.88	4.63	49.84	104.49	1124.72
	3105-3105	99.83	1074.56	4.63	49.84	104.46	1124.40
	3106-3106	99.83	1074.56	4.63	49.84	104.46	1124.40
32F-41F	3204-4104	100.04	1076.82	4.63	49.84	104.67	1126.65



FLOOR PLAN 1. All dimensions are in imperial and metric, and measured from finish to finish excluding construction tolerances. 2. All materials, dimensions, and drawings are approximate only. 3. Information is subject to change without notice, at developer's absolute discretion. 4. Actual area may vary from the stated area. 5. Drawings not to scale. 6. All images used are for illustrative purposes only and do not represent the actual size, features, specifications, fittings, and furnishings. 7. The developer reserves the right to make revisions / alterations, at its absolute discretion, without any liability whatsoever.



DUBAI
HOLDING



ADDRESS HARBOUR POINT

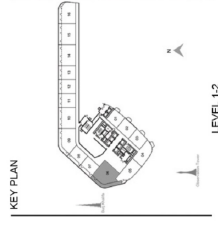
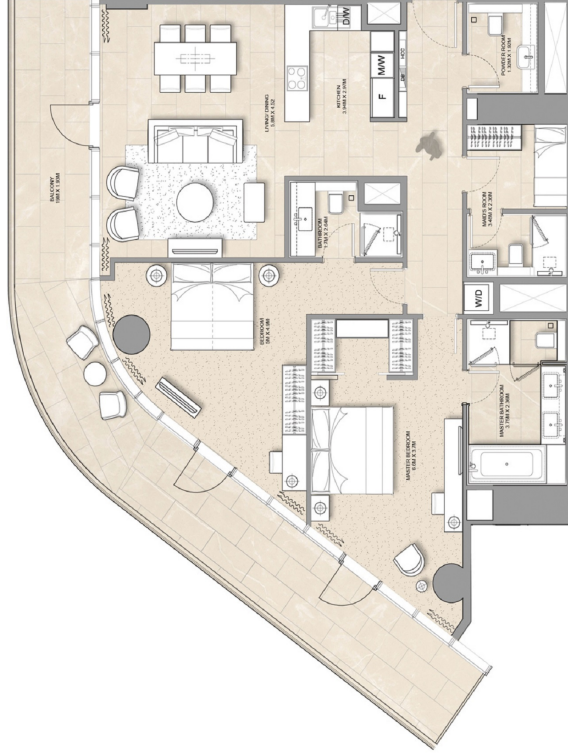
DUBAI CREEK HARBOUR

VILLAS APARTMENT 2 BEDROOM APARTMENT - PD-2B

LEVEL	UNIT NUMBER	INT. AREA		AREAS		TOTAL AREA	
		SQM	SQFT	BALCONY AREA SQM	SQFT	SQM	SQFT
PD-1	105	136.20	1466.04	40.99	441.14	177.09	1906.18
PD-2	206	190.04	1661.32	40.13	473.17	238.19	2086.49

PODIUM

LEVEL	UNIT NUMBER	INT. AREA SQM	INT. AREA SQFT	BALCONY AREA SQM	BALCONY AREA SQFT	TOTAL AREA SQM	TOTAL AREA SQFT
PD-1	105	136.20	1466.04	40.99	441.14	177.09	1906.18
PD-2	206	190.04	1661.32	40.13	473.17	238.19	2086.49



FLOOR PLAN 1. All dimensions are in imperial and metric, and measured from finish to finish excluding construction tolerances. 2. All materials, dimensions, and drawings are approximate only. 3. Information is subject to change without notice, at developer's absolute discretion. 4. Actual area may vary from the stated area. 5. Drawings not to scale. 6. All images used are for illustrative purposes only and do not represent the actual size, features, specifications, fittings, and furnishings. 7. The developer reserves the right to make revisions / alterations, at its absolute discretion, without any liability whatsoever.



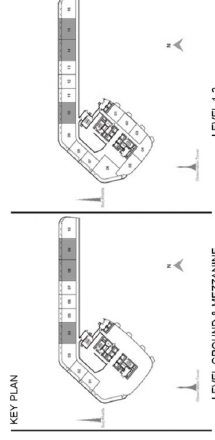


ADDRESS
HARBOUR POINT

DUBAI CREEK
HARBOUR

VILLAS APARTMENT
2 BEDROOM APARTMENT - PD-2D

LEVEL	UNIT NUMBER		AREA		TOTAL AREA		
	SQM	SQFT	SQM	SQFT	SQM	SQFT	
PODIUM	GROUND						
	GH4	104.16	1121.17	24.30	260.49	178.36	1381.66
	GH8	104.16	1121.17	24.30	260.49	178.36	1381.66
	M04	104.16	1121.17	24.30	260.49	178.36	1381.66
	MEZZANINE						
	M08	104.16	1121.17	24.30	260.49	178.36	1381.66
	M09	104.16	1121.17	24.30	260.49	178.36	1381.66
	M10	104.16	1121.17	24.30	260.49	178.36	1381.66
	M11	104.16	1121.17	24.30	260.49	178.36	1381.66
	P.L.I						
	115	104.16	1121.17	24.30	260.49	178.36	1381.66
	210	104.16	1121.17	23.84	256.61	178.00	1377.78
215	104.16	1121.17	23.84	256.61	178.00	1377.78	



FLOOR PLAN 1. All dimensions are in imperial and metric, and measured from finish to finish excluding construction tolerances. 2. All materials, dimensions, and drawings are approximate only. 3. Information is subject to change without notice, at developer's absolute discretion. 4. Actual area may vary from the stated area. 5. Drawings not to scale. 6. All images used are for illustrative purposes only and do not represent the actual size, features, specifications, fittings, and furnishings. 7. The developer reserves the right to make revisions / alterations, at its absolute discretion, without any liability whatsoever.



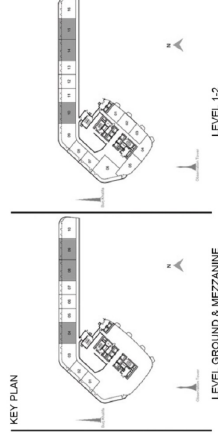
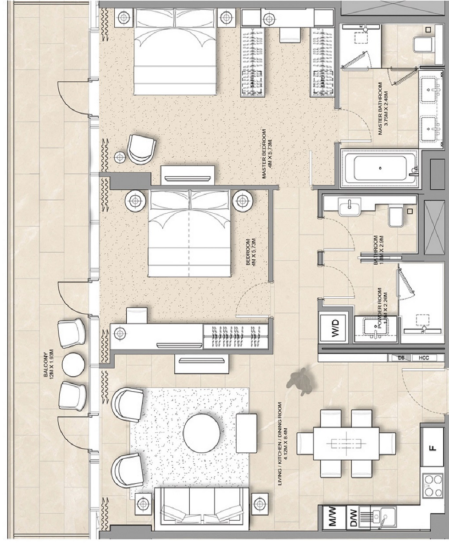


ADDRESS HARBOUR POINT

DUBAI CREEK HARBOUR

VILLAS APARTMENT 2 BEDROOM APARTMENT - PD-2D

LEVEL	UNIT NUMBER		AREA		TOTAL AREA	
	SQM	SQFT	SQM	SQFT	SQM	SQFT
PODIUM	104.16	1121.17	24.30	260.49	178.36	1927.96
	104.16	1121.17	24.30	260.49	178.36	1927.96
	104.16	1121.17	24.30	260.49	178.36	1927.96
	104.16	1121.17	24.30	260.49	178.36	1927.96
	104.16	1121.17	24.30	260.49	178.36	1927.96
	104.16	1121.17	24.30	260.49	178.36	1927.96
	104.16	1121.17	24.30	260.49	178.36	1927.96
	104.16	1121.17	24.30	260.49	178.36	1927.96
	104.16	1121.17	24.30	260.49	178.36	1927.96
	104.16	1121.17	24.30	260.49	178.36	1927.96
	104.16	1121.17	24.30	260.49	178.36	1927.96
	104.16	1121.17	24.30	260.49	178.36	1927.96



FLOOR PLAN 1. All dimensions are in imperial and metric, and measured from finish to finish excluding construction tolerances. 2. All materials, dimensions, and drawings are approximate only. 3. Information is subject to change without notice, at developer's absolute discretion. 4. Actual area may vary from the stated area. 5. Drawings not to scale. 6. All images used are for illustrative purposes only and do not represent the actual size, features, specifications, fittings, and furnishings. 7. The developer reserves the right to make revisions / alterations, at its absolute discretion, without any liability whatsoever.



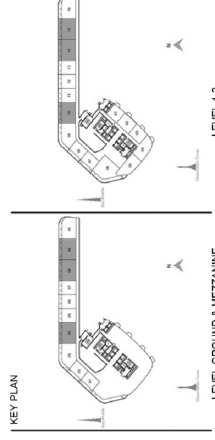
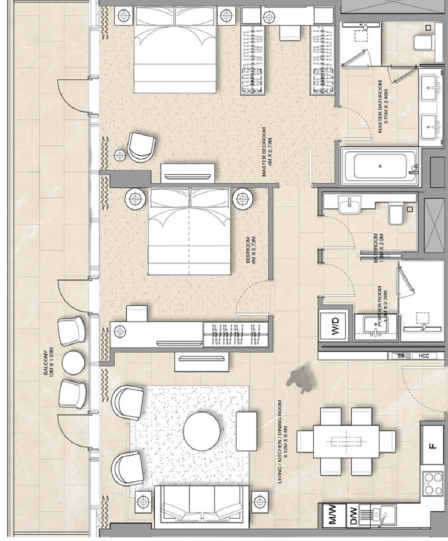


ADDRESS
HARBOUR POINT

DUBAI CREEK
HARBOUR

VILLAS APARTMENT
2 BEDROOM APARTMENT - PD-2D

LEVEL	UNIT NUMBER		AREA		TOTAL AREA		
	SQM	SQFT	SQM	SQFT	SQM	SQFT	
PODIUM	GROUND						
	GH4	104.16	1121.17	24.30	260.49	178.36	1914.66
	GH8	104.16	1121.17	24.30	260.49	178.36	1914.66
	M04	104.16	1121.17	24.30	260.49	178.36	1914.66
	MEZZANINE						
	M08	104.16	1121.17	24.30	260.49	178.36	1914.66
	M09	104.16	1121.17	24.30	260.49	178.36	1914.66
	M10	104.16	1121.17	24.30	260.49	178.36	1914.66
	M11	104.16	1121.17	24.30	260.49	178.36	1914.66
	M14	104.16	1121.17	24.30	260.49	178.36	1914.66
	P.L.I						
	115	104.16	1121.17	24.30	260.49	178.36	1914.66
P.L.2							
210	104.16	1121.17	23.84	256.61	178.00	1877.78	
211	104.16	1121.17	23.84	256.61	178.00	1877.78	
215	104.16	1121.17	23.84	256.61	178.00	1877.78	



FLOOR PLAN 1. All dimensions are in imperial and metric, and measured from finish to finish excluding construction tolerances. 2. All materials, dimensions, and drawings are approximate only. 3. Information is subject to change without notice, at developer's absolute discretion. 4. Actual area may vary from the stated area. 5. Drawings not to scale. 6. All images used are for illustrative purposes only and do not represent the actual size, features, specifications, fittings, and furnishings. 7. The developer reserves the right to make revisions / alterations, at its absolute discretion, without any liability whatsoever.



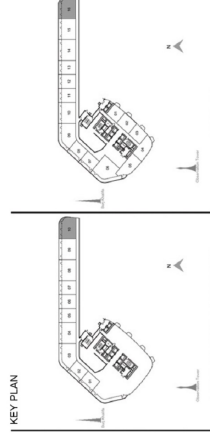
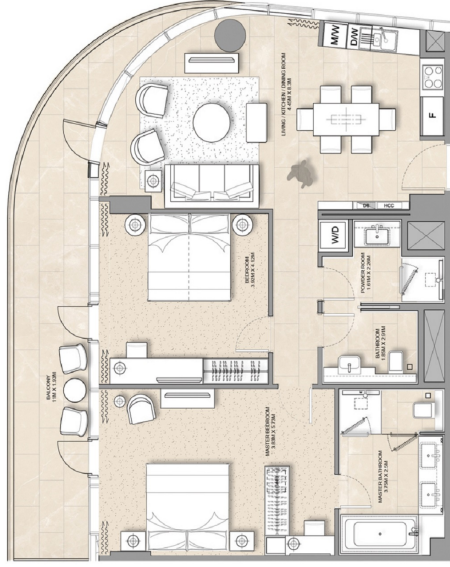


ADDRESS
HARBOUR POINT

DUBAI CREEK
HARBOUR

VILLAS APARTMENT
2 BEDROOM APARTMENT - PD-2E

LEVEL	UNIT NUMBER	INT. AREA		AREAS		TOTAL AREA
		SQM	SQFT	BALCONY AREA SQM	SQFT	
PODIUM						
GROUND	G10	104.84	1126.69	21.64	254.46	1382.05
MEZZANINE	M10	104.84	1126.69	21.64	254.46	1382.05
P4	210	104.84	1126.69	21.15	249.18	1377.67



FLOOR PLAN 1. All dimensions are in imperial and metric, and measured from finish to finish excluding construction tolerances. 2. All materials, dimensions, and drawings are approximate only. 3. Information is subject to change without notice, at developer's absolute discretion. 4. Actual area may vary from the stated area. 5. Drawings not to scale. 6. All images used are for illustrative purposes only and do not represent the actual size, features, specifications, fittings, and furnishings. 7. The developer reserves the right to make revisions / alterations, at its absolute discretion, without any liability whatsoever.



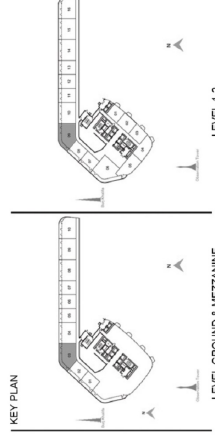
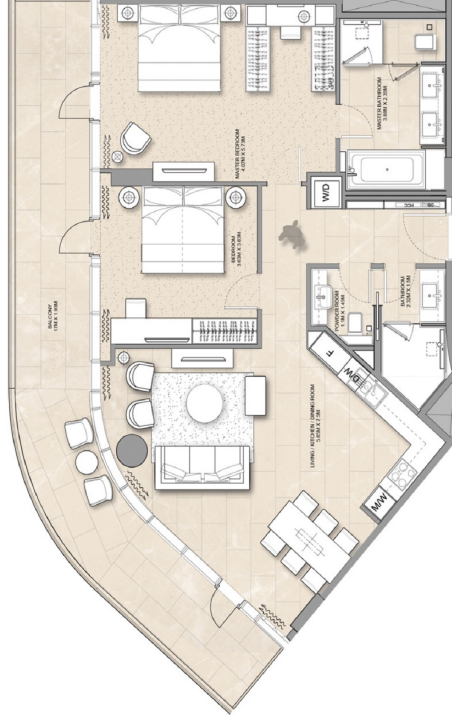


ADDRESS HARBOUR POINT

DUBAI CREEK HARBOUR

VILLAS APARTMENT 2 BEDROOM APARTMENT - PD-2C

LEVEL	UNIT NUMBER	UNIT AREA		AREAS		TOTAL AREA	
		SQM	SQFT	BALCONY AREA SQM	SQFT	SQM	SQFT
PODIUM							
GROUND	G01	108.908	1171.05	34.83	374.01	143.81	1547.06
MEZZANINE	M01	108.908	1171.05	34.83	374.01	143.81	1547.06
P+1	P01	108.908	1171.05	34.26	368.99	143.96	1542.04



FLOOR PLAN 1. All dimensions are in imperial and metric, and measured from finish to finish excluding construction tolerances. 2. All materials, dimensions, and drawings are approximate only. 3. Information is subject to change without notice, at developer's absolute discretion. 4. Actual area may vary from the stated area. 5. Drawings not to scale. 6. All images used are for illustrative purposes only and do not represent the actual size, features, specifications, fittings, and furnishings. 7. The developer reserves the right to make revisions / alterations, at its absolute discretion, without any liability whatsoever.



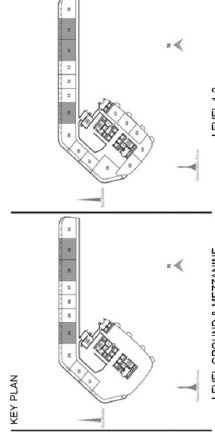
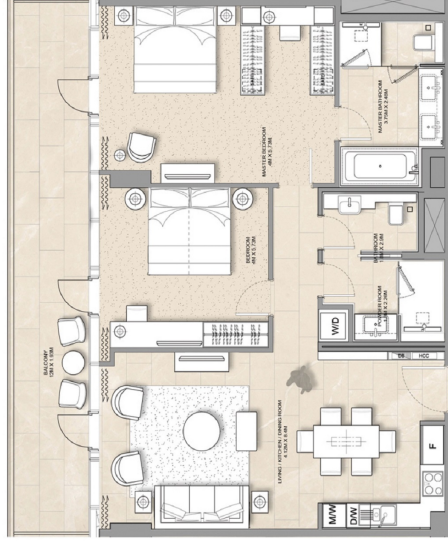


ADDRESS
HARBOUR POINT

DUBAI CREEK
HARBOUR

VILLAS APARTMENT
2 BEDROOM APARTMENT - PD-2D

LEVEL	UNIT NUMBER		AREA		TOTAL AREA		
	SQM	SQFT	SQM	SQFT	SQM	SQFT	
PODIUM	GROUND						
	GH4	104.16	1121.17	24.30	260.49	178.36	1381.66
	GH8	104.16	1121.17	24.30	260.49	178.36	1381.66
	M04	104.16	1121.17	24.30	260.49	178.36	1381.66
	MEZZANINE						
	M08	104.16	1121.17	24.30	260.49	178.36	1381.66
	M09	104.16	1121.17	24.30	260.49	178.36	1381.66
	M10	104.16	1121.17	24.30	260.49	178.36	1381.66
	M11	104.16	1121.17	24.30	260.49	178.36	1381.66
	M14	104.16	1121.17	24.30	260.49	178.36	1381.66
	P.L.I						
	115	104.16	1121.17	24.30	260.49	178.36	1381.66
210	104.16	1121.17	23.84	256.61	178.00	1377.78	
215	104.16	1121.17	23.84	256.61	178.00	1377.78	



FLOOR PLAN 1. All dimensions are in imperial and metric, and measured from finish to finish excluding construction tolerances. 2. All materials, dimensions, and drawings are approximate only. 3. Information is subject to change without notice, at developer's absolute discretion. 4. Actual area may vary from the stated area. 5. Drawings not to scale. 6. All images used are for illustrative purposes only and do not represent the actual size, features, specifications, fittings, and furnishings. 7. The developer reserves the right to make revisions / alterations, at its absolute discretion, without any liability whatsoever.



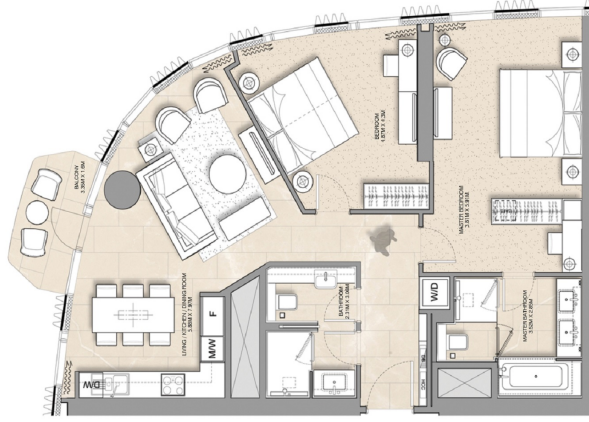


ADDRESS HARBOUR POINT

DUBAI CREEK HARBOUR

SERVICED APARTMENT 2 BEDROOM APARTMENT - T1-2A

LEVEL	UNIT NUMBER	INT. AREA		AREAS		TOTAL AREA
		SQM	SQFT	BALCONY AREA SQM	SQFT	
TOWER 1						
10F	1001	99.83	1074.56	3.15	34.01	1108.59
	1005	99.83	1074.56	3.15	34.01	1108.59
	1009	99.83	1074.56	3.15	34.01	1108.59
20F	2005	99.83	1074.56	3.91	42.09	1116.05
21F-31F	2101-3101	99.88	1074.88	4.63	49.84	1134.22
	2105-3105	99.83	1074.56	4.63	49.84	1134.40
	3204-4104	100.04	1076.82	4.63	49.84	1136.65



FLOOR PLAN 1. All dimensions are in imperial and metric, and measured from finish to finish excluding construction tolerances. 2. All materials, dimensions, and drawings are approximate only. 3. Information is subject to change without notice, at developer's absolute discretion. 4. Actual area may vary from the stated area. 5. Drawings not to scale. 6. All images used are for illustrative purposes only and do not represent the actual size, features, specifications, fittings, and furnishings. 7. The developer reserves the right to make revisions / alterations, at its absolute discretion, without any liability whatsoever.



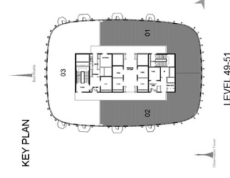
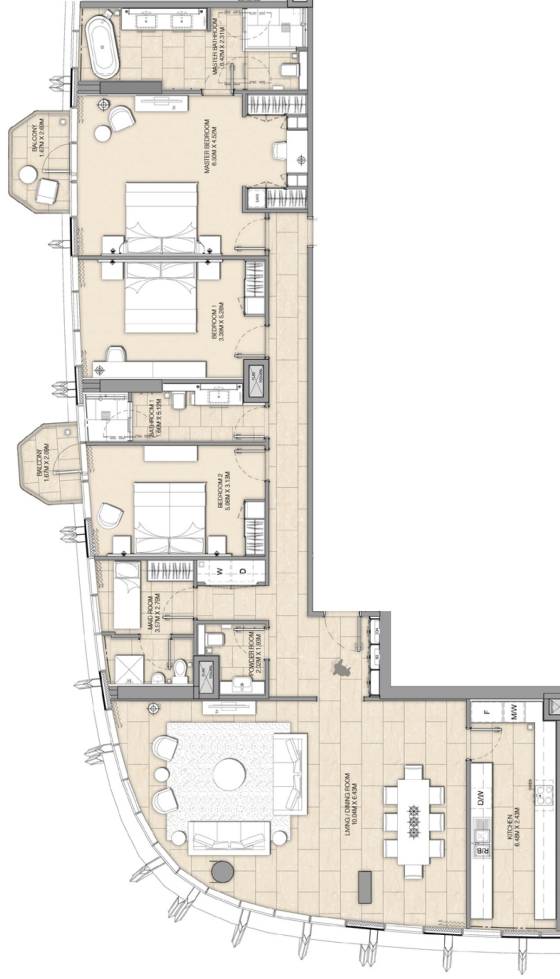


ADDRESS
HARBOUR POINT

DUBAI CREEK
HARBOUR

**SERVICED APARTMENT
3 BEDROOM APARTMENT - T1-3B**

LEVEL	UNIT NUMBER	UNIT AREA		BALCONY AREA		TOTAL AREA	
		SQM	SQFT	SQM	SQFT	SQM	SQFT
TOWER 1							
60F	6001	208.59	2,232.97	7.31	78.08	212.90	2,291.66
	6002	208.62	2,233.29	7.31	78.08	212.93	2,291.98
50F	5002	208.62	2,233.29	7.31	78.08	212.93	2,291.98
51F	5102	208.62	2,233.29	7.31	78.08	212.93	2,291.98



FLOOR PLAN 1. All dimensions are in imperial and metric, and measured from finish to finish excluding construction tolerances. 2. All materials, dimensions, and drawings are approximate only. 3. Information is subject to change without notice, at developer's absolute discretion. 4. Actual area may vary from the stated area. 5. Drawings not to scale. 6. All images used are for illustrative purposes only and do not represent the actual size, features, specifications, fittings, and furnishings. 7. The developer reserves the right to make revisions / alterations, at its absolute discretion, without any liability whatsoever.



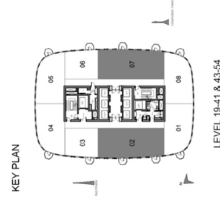
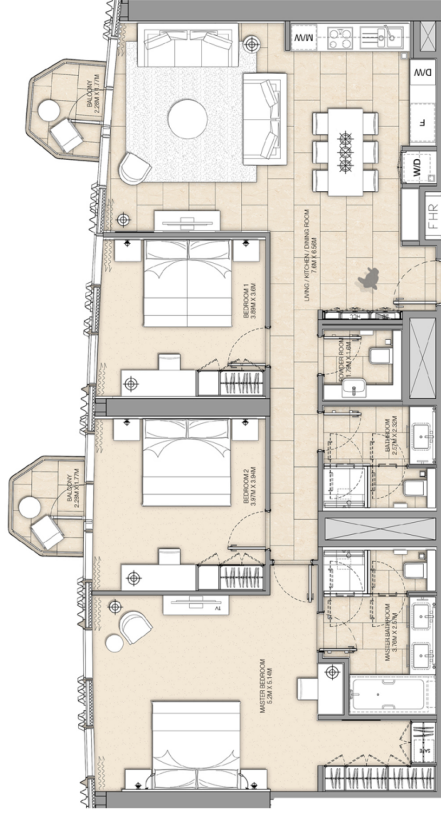


**ADDRESS
HARBOUR POINT**

**DUBAI CREEK
HARBOUR**

**SERVICED APARTMENT
3 BEDROOM APARTMENT - T2-3A**

LEVEL	UNIT NUMBER	UNIT AREA		BALCONY AREA		MEAS.		TOTAL AREA
		SQM	SQFT	SQM	SQFT	SQM	SQFT	
TOWER 2								
10F	1002	178.89	1,895.01	6.31	67.02	143.30	1,502.03	1,502.03
10F	1007	178.89	1,895.01	6.31	67.02	143.30	1,502.03	1,502.03
20F	2007	178.89	1,895.01	6.31	67.02	143.30	1,502.03	1,502.03
21F	2102-4102	178.88	1,894.90	13.02	107.86	148.90	1,602.76	1,602.76
21F	2102-4107	178.88	1,894.90	13.02	107.86	148.90	1,602.76	1,602.76
43F-52F	4307-5207	178.88	1,894.90	13.02	107.86	148.90	1,602.76	1,602.76
53F	5302	178.88	1,894.90	13.02	107.86	148.90	1,602.76	1,602.76
53F	5307	178.88	1,894.90	13.02	107.86	148.90	1,602.76	1,602.76
54F	5407	178.87	1,894.86	13.02	107.86	148.89	1,598.52	1,598.52



FLOOR PLAN 1. All dimensions are in imperial and metric, and measured from finish to finish excluding construction tolerances. 2. All materials, dimensions, and drawings are approximate only. 3. Information is subject to change without notice, at developer's absolute discretion. 4. Actual area may vary from the stated area. 5. Drawings not to scale. 6. All images used are for illustrative purposes only and do not represent the actual size, features, specifications, fittings, and furnishings. 7. The developer reserves the right to make revisions / alterations, at its absolute discretion, without any liability whatsoever.



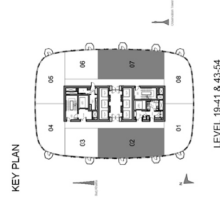
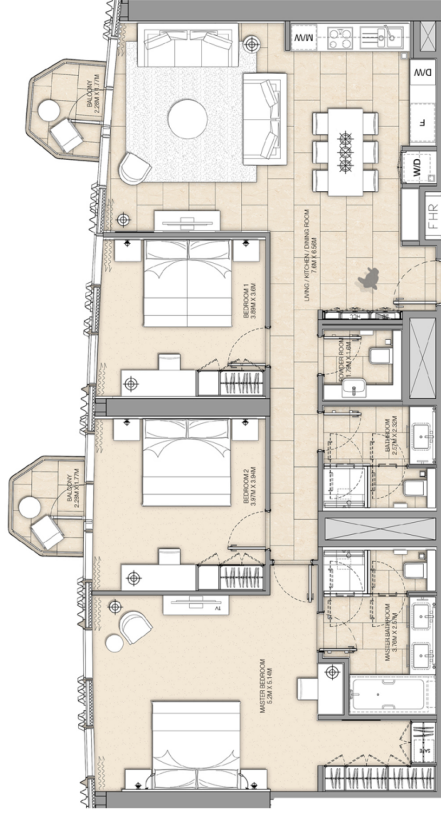


**ADDRESS
HARBOUR POINT**

**DUBAI CREEK
HARBOUR**

**SERVICED APARTMENT
3 BEDROOM APARTMENT - T2-3A**

LEVEL	UNIT NUMBER	UNIT AREA		BALCONY AREA		MEAS.		TOTAL AREA
		SQM	SQFT	SQM	SQFT	SQM	SQFT	
TOWER 2								
10F	1002	178.89	1,895.01	6.31	67.02	143.30	1,502.03	1,502.03
10F	1007	178.89	1,895.01	6.31	67.02	143.30	1,502.03	1,502.03
20F	2007	178.89	1,895.01	6.31	67.02	143.30	1,502.03	1,502.03
21F	2102-4102	178.88	1,894.90	13.02	107.86	148.90	1,602.76	1,602.76
21F	2102-4107	178.88	1,894.90	13.02	107.86	148.90	1,602.76	1,602.76
43F-52F	4307-5207	178.88	1,894.90	13.02	107.86	148.90	1,602.76	1,602.76
53F	5302	178.88	1,894.90	13.02	107.86	148.90	1,602.76	1,602.76
53F	5307	178.88	1,894.90	13.02	107.86	148.90	1,602.76	1,602.76
54F	5407	178.87	1,894.86	13.02	107.86	148.89	1,602.72	1,602.72



FLOOR PLAN 1. All dimensions are in imperial and metric, and measured from finish to finish excluding construction tolerances. 2. All materials, dimensions, and drawings are approximate only. 3. Information is subject to change without notice, at developer's absolute discretion. 4. Actual area may vary from the stated area. 5. Drawings not to scale. 6. All images used are for illustrative purposes only and do not represent the actual size, features, specifications, fittings, and furnishings. 7. The developer reserves the right to make revisions / alterations, at its absolute discretion, without any liability whatsoever.



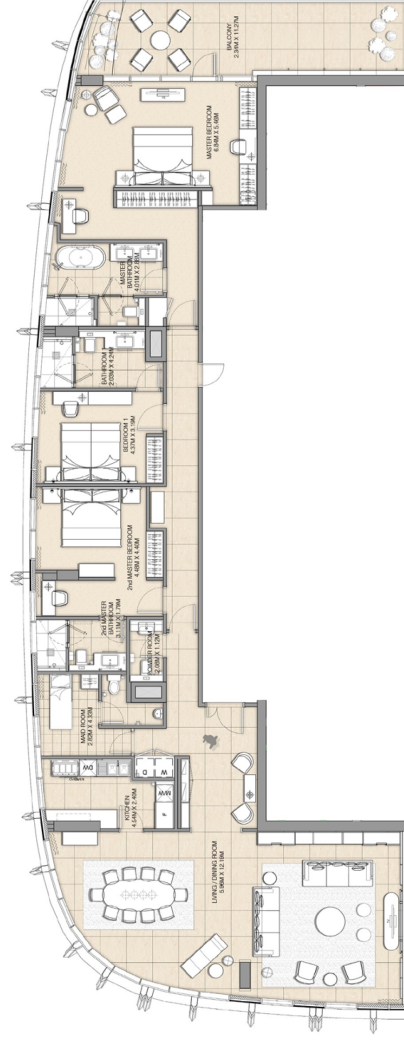


ADDRESS
HARBOUR POINT

DUBAI CREEK
HARBOUR

SERVICED APARTMENT
3 BEDROOM APARTMENT - T1-SKY UNIT-4B.1

LEVEL	UNIT NUMBER	UNIT AREA		BALCONY AREA		TOTAL AREA	
		SQM	SQFT	SQM	SQFT	SQM	SQFT
TOWER 1							
5/F	501	226.05	2,442.59	27.55	296.55	254.50	2,739.04

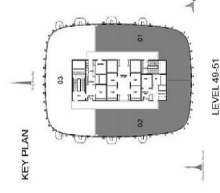
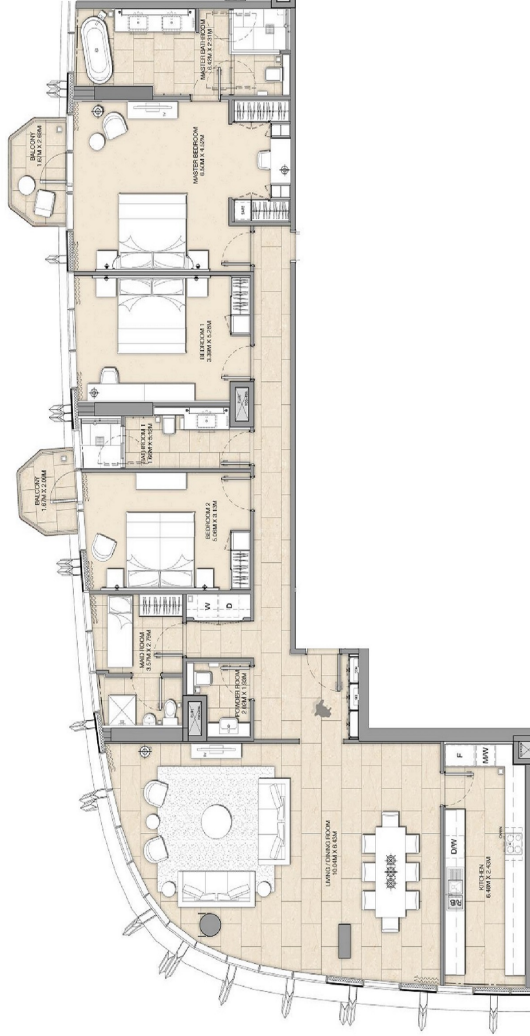


FLOOR PLAN 1. All dimensions are in imperial and metric, and measured from finish to finish excluding construction tolerances. 2. All materials, dimensions, and drawings are approximate only. 3. Information is subject to change without notice, at developer's absolute discretion. 4. Actual area may vary from the stated area. 5. Drawings not to scale. 6. All images used are for illustrative purposes only and do not represent the actual size, features, specifications, fittings, and furnishings. 7. The developer reserves the right to make revisions / alterations, at its absolute discretion, without any liability whatsoever.



SERVICED APARTMENT
3 BEDROOM APARTMENT - T1-3B

LEVEL	UNIT NUMBER	UNIT AREA		AREAS		TOTAL AREA	
		SQ.M	SQ.FEET	BALCONY AREA	SQ.M	SQ.FEET	SQ.M
TOWER 1							
08F	4001	205.59	2,213.97	7.14	76.68	213.00	2,291.66
08F	4002	205.63	2,213.29	7.14	76.68	213.03	2,291.98
08F	5001	205.59	2,213.97	7.14	76.68	213.00	2,291.66
08F	5101	205.59	2,213.97	7.14	76.68	213.00	2,291.66
08F	5102	205.63	2,213.29	7.14	76.68	213.03	2,291.98



FLOOR PLAN 1. All dimensions are in imperial and metric, and measured from finish to finish, excluding construction tolerances. 2. All materials, dimensions, and drawings are approximate only. 3. Information is subject to change without notice, at developer's absolute discretion. 4. Actual area may vary from the stated area. 5. Drawings not to scale. 6. All images used are for illustrative purposes only and do not represent the actual size, features, specifications, fittings, and furnishings. 7. The developer reserves the right to make revisions / alterations, at its absolute discretion, without any liability whatsoever.



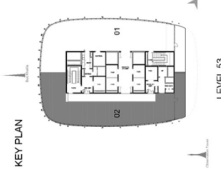
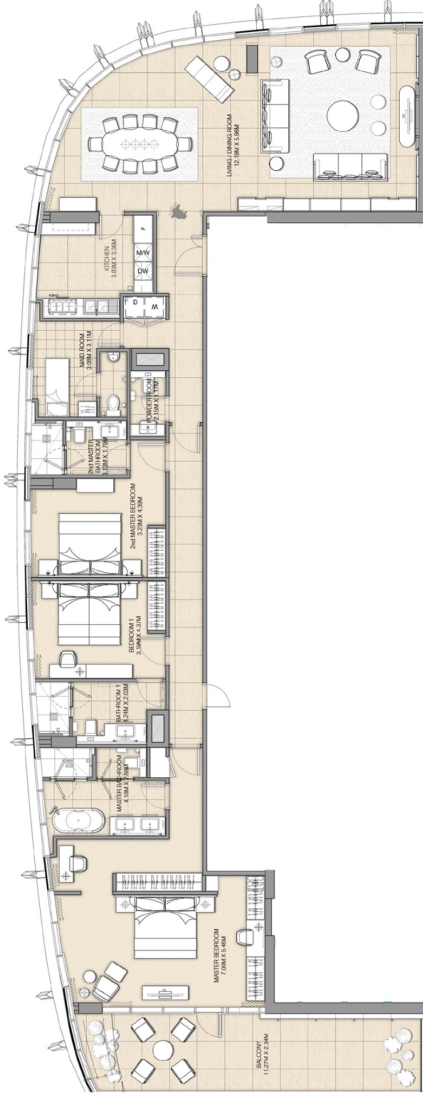


ADDRESS
HARBOUR POINT

DUBAI CREEK
HARBOUR

SERVICED APARTMENT
3 BEDROOM APARTMENT - T1-SKY UNIT-4B

LEVEL	UNIT NUMBER	AREA		BALCONY AREA		TOTAL AREA	
		SQM	SQFT	SQM	SQFT	SQM	SQFT
TOWER 1							
53F	5302	2,17.91	2,335.58	27.55	296.55	245.46	2,632.13



FLOOR PLAN 1. All dimensions are in imperial and metric, and measured from finish to finish excluding construction tolerances. 2. All materials, dimensions, and drawings are approximate only. 3. Information is subject to change without notice, at developer's absolute discretion. 4. Actual area may vary from the stated area. 5. Drawings not to scale. 6. All images used are for illustrative purposes only and do not represent the actual size, features, specifications, fittings, and furnishings. 7. The developer reserves the right to make revisions / alterations, at its absolute discretion, without any liability whatsoever.



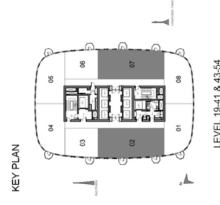
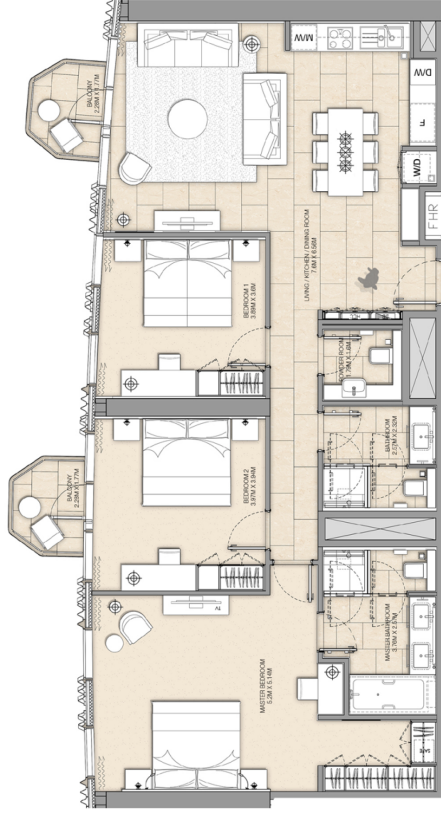


**ADDRESS
HARBOUR POINT**

**DUBAI CREEK
HARBOUR**

**SERVICED APARTMENT
3 BEDROOM APARTMENT - T2-3A**

LEVEL	UNIT NUMBER	UNIT AREA		BALCONY AREA		MEAS.		TOTAL AREA
		SQM	SQFT	SQM	SQFT	SQM	SQFT	
TOWER 2								
10F	1002	178.89	1,895.01	6.31	67.02	143.30	1,502.03	1,502.03
10F	1007	178.87	1,894.41	6.31	67.02	143.30	1,501.48	1,501.48
10F	2001	178.87	1,894.41	6.31	67.02	143.30	1,501.48	1,501.48
20F	2007	178.87	1,894.41	6.30	69.34	146.07	1,578.76	1,578.76
21F (A1)F	2102-A102	178.88	1,894.00	10.02	107.86	148.90	1,602.76	1,602.76
21F (A1)F	2102-A107	178.88	1,894.11	10.02	107.86	148.88	1,597.16	1,597.16
43F (S2)F	4302-S207	178.86	1,893.31	10.02	107.86	148.88	1,597.16	1,597.16
53F	5302	178.88	1,893.52	10.02	107.86	148.80	1,597.38	1,597.38
53F	5307	177.85	1,883.52	10.02	107.86	147.87	1,591.27	1,591.27
54F	5407	176.47	1,868.96	10.02	107.86	146.49	1,576.52	1,576.52



FLOOR PLAN 1. All dimensions are in imperial and metric, and measured from finish to finish excluding construction tolerances. 2. All materials, dimensions, and drawings are approximate only. 3. Information is subject to change without notice, at developer's absolute discretion. 4. Actual area may vary from the stated area. 5. Drawings not to scale. 6. All images used are for illustrative purposes only and do not represent the actual size, features, specifications, fittings, and furnishings. 7. The developer reserves the right to make revisions / alterations, at its absolute discretion, without any liability whatsoever.



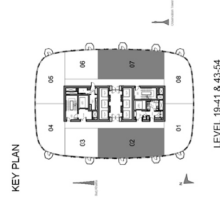
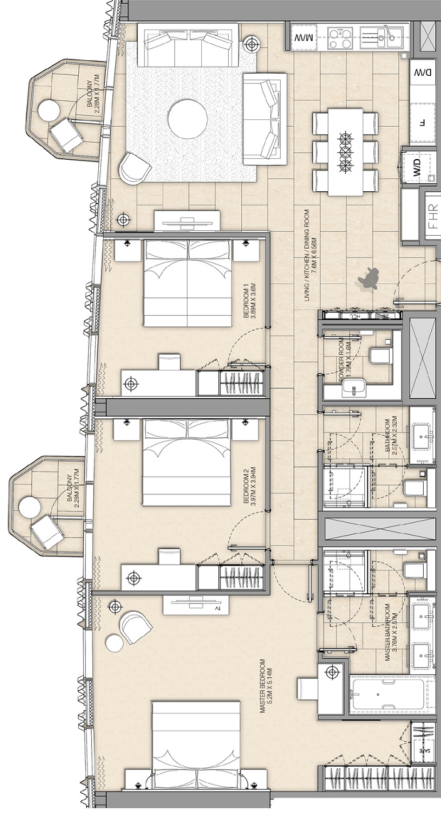


**ADDRESS
HARBOUR POINT**

**DUBAI CREEK
HARBOUR**

**SERVICED APARTMENT
3 BEDROOM APARTMENT - T2-3A**

LEVEL	UNIT NUMBER	UNIT AREA		BALCONY AREA		MEAS.		TOTAL AREA
		SQM	SQFT	SQM	SQFT	SQM	SQFT	
TOWER 2								
10F	1002	178.89	1,895.01	6.31	67.02	143.30	1,502.03	1,502.03
10F	1007	178.87	1,894.41	6.31	67.02	143.30	1,501.48	1,501.48
10F	2007	178.87	1,894.41	6.31	67.02	143.30	1,501.48	1,501.48
20F	2007	178.87	1,894.41	6.31	67.02	143.30	1,501.48	1,501.48
21F (A1)F	2102-A102	178.88	1,894.90	10.02	107.86	148.90	1,602.76	1,602.76
21F (A1)F	2102-A107	178.88	1,894.91	10.02	107.86	148.90	1,602.76	1,602.76
43F (S2)F	4302-S207	178.88	1,894.91	10.02	107.86	148.90	1,602.76	1,602.76
53F	5302	178.88	1,894.92	10.02	107.86	148.90	1,602.76	1,602.76
53F	5307	178.88	1,894.92	10.02	107.86	148.90	1,602.76	1,602.76
54F	5407	178.47	1,848.96	10.02	107.86	146.49	1,576.32	1,576.32



FLOOR PLAN 1. All dimensions are in imperial and metric, and measured from finish to finish excluding construction tolerances. 2. All materials, dimensions, and drawings are approximate only. 3. Information is subject to change without notice, at developer's absolute discretion. 4. Actual area may vary from the stated area. 5. Drawings not to scale. 6. All images used are for illustrative purposes only and do not represent the actual size, features, specifications, fittings, and furnishings. 7. The developer reserves the right to make revisions / alterations, at its absolute discretion, without any liability whatsoever.



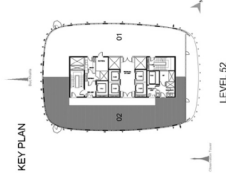
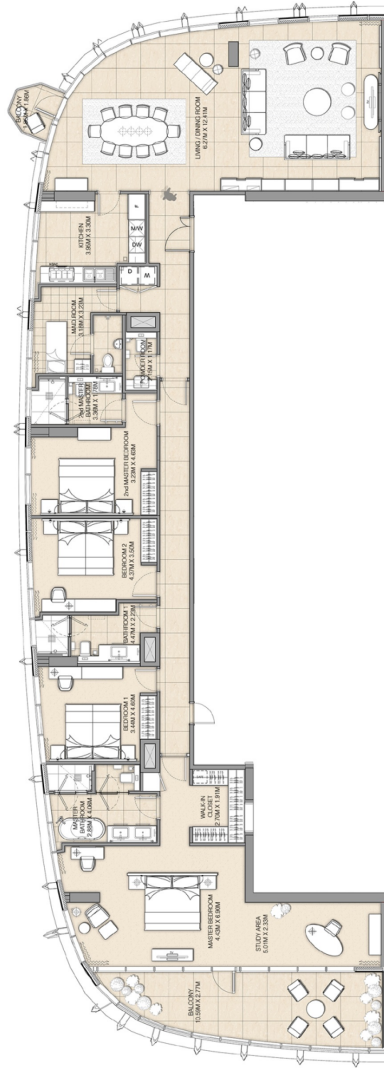


ADDRESS
HARBOUR POINT

DUBAI CREEK
HARBOUR

SERVICED APARTMENT
4 BEDROOM APARTMENT - T1-SKY UNIT-4A

LEVEL	UNIT NUMBER	UNIT AREA		BALCONY AREA		TOTAL AREA	
		SQM	SQFT	SQM	SQFT	SQM	SQFT
TOWER 1							
S/P	S203	299.97	3,234.01	28.35	306.16	297.02	3,209.12



FLOOR PLAN 1. All dimensions are in imperial and metric, and measured from finish to finish excluding construction tolerances. 2. All materials, dimensions, and drawings are approximate only. 3. Information is subject to change without notice, at developer's absolute discretion. 4. Actual area may vary from the stated area. 5. Drawings not to scale. 6. All images used are for illustrative purposes only and do not represent the actual size, features, specifications, fittings, and furnishings. 7. The developer reserves the right to make revisions / alterations, at its absolute discretion, without any liability whatsoever.



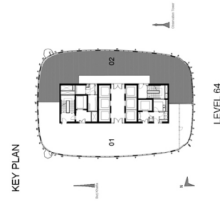
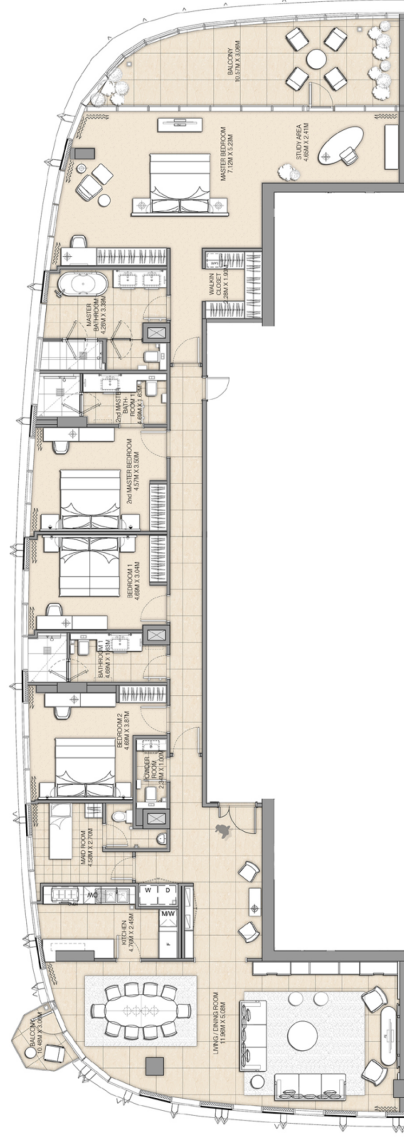


ADDRESS
HARBOUR POINT

DUBAI CREEK
HARBOUR

SERVICED APARTMENT
4 BEDROOM APARTMENT - T2-SKY UNIT 4A.1

LEVEL	UNIT NUMBER	AREA		TOTAL AREA	
		UNIT AREA SQM	BALCONY AREA SQFT	SQM	SQFT
TOWER 2					
64F	6402	261.13	32.44	346.18	3,733.57
				3,129.02	



FLOOR PLAN 1. All dimensions are in imperial and metric, and measured from finish to finish excluding construction tolerances. 2. All materials, dimensions, and drawings are approximate only. 3. Information is subject to change without notice, at developer's absolute discretion. 4. Actual area may vary from the stated area. 5. Drawings not to scale. 6. All images used are for illustrative purposes only and do not represent the actual size, features, specifications, fittings, and furnishings. 7. The developer reserves the right to make revisions / alterations, at its absolute discretion, without any liability whatsoever.





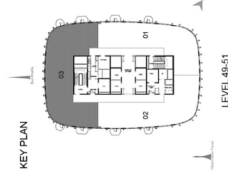
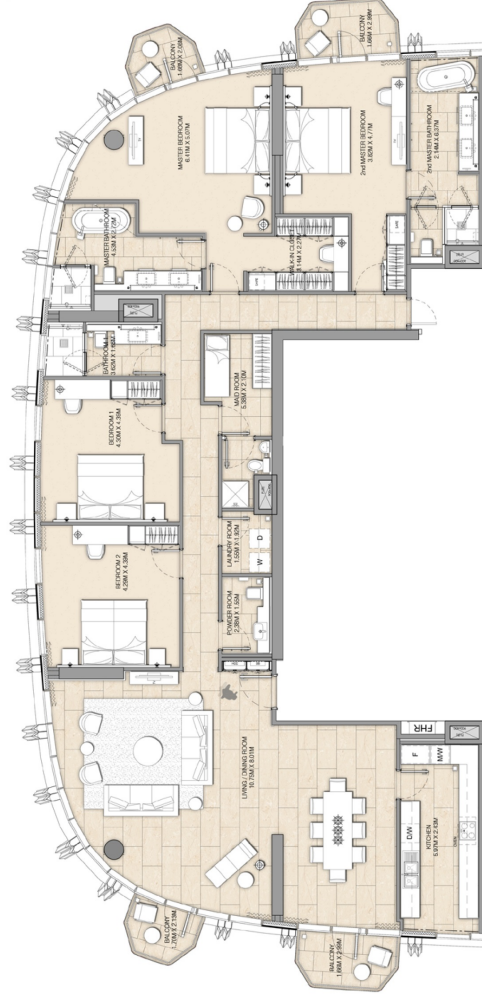
ADDRESS
HARBOUR POINT

DUBAI CREEK
HARBOUR

SERVICED APARTMENT
4 BEDROOM APARTMENT - T1-4A

LEVEL	UNIT NUMBER	UNIT AREA		BALCONY AREA		TOTAL AREA	
		SQM	SQFT	SQM	SQFT	SQM	SQFT
40F-S/F <td>4003</td> <td>2,620.07</td> <td>28,200.02</td> <td>15.66</td> <td>168.56</td> <td>2,772.23</td> <td>29,889.49</td>	4003	2,620.07	28,200.02	15.66	168.56	2,772.23	29,889.49
500	5007	2,520.02	27,173.1	15.66	168.56	2,772.23	29,889.49
503	5031	2,520.02	27,173.1	15.66	168.56	2,772.23	29,889.49

TOWER 1							
LEVEL	UNIT NUMBER	UNIT AREA		BALCONY AREA		TOTAL AREA	
		SQM	SQFT	SQM	SQFT	SQM	SQFT
40F-S/F	4003	2,620.07	28,200.02	15.66	168.56	2,772.23	29,889.49
500	5007	2,520.02	27,173.1	15.66	168.56	2,772.23	29,889.49
503	5031	2,520.02	27,173.1	15.66	168.56	2,772.23	29,889.49



FLOOR PLAN 1. All dimensions are in imperial and metric, and measured from finish to finish excluding construction tolerances. 2. All materials, dimensions, and drawings are approximate only. 3. Information is subject to change without notice, at developer's absolute discretion. 4. Actual area may vary from the stated area. 5. Drawings not to scale. 6. All images used are for illustrative purposes only and do not represent the actual size, features, specifications, fittings, and furnishings. 7. The developer reserves the right to make revisions / alterations, at its absolute discretion, without any liability whatsoever.



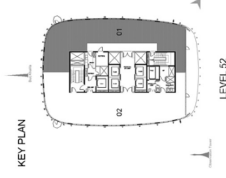
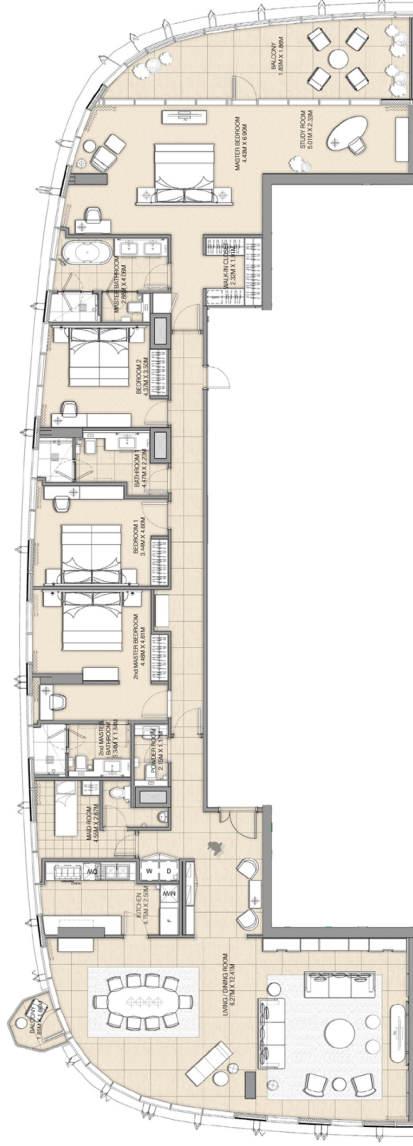


ADDRESS
HARBOUR POINT

DUBAI CREEK
HARBOUR

SERVICED APARTMENT
4 BEDROOM APARTMENT - T1-SKY UNIT-4A.1

LEVEL	UNIT NUMBER	AREA		TOTAL AREA	
		SQM	SQFT	SQM	SQFT
TOWER 1					
S/P	S/01	297.77	3,232.28	29.27	314.30
				296.04	3,196.02



FLOOR PLAN 1. All dimensions are in imperial and metric, and measured from finish to finish excluding construction tolerances. 2. All materials, dimensions, and drawings are approximate only. 3. Information is subject to change without notice, at developer's absolute discretion. 4. Actual area may vary from the stated area. 5. Drawings not to scale. 6. All images used are for illustrative purposes only and do not represent the actual size, features, specifications, fittings, and furnishings. 7. The developer reserves the right to make revisions / alterations, at its absolute discretion, without any liability whatsoever.



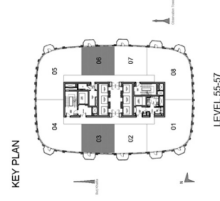
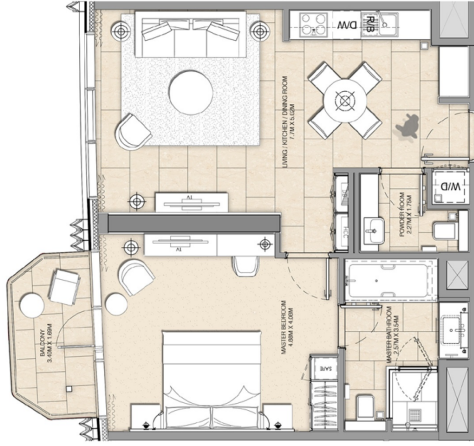


ADDRESS
HARBOUR POINT

DUBAI CREEK
HARBOUR

SERVICED APARTMENT
1 BEDROOM APARTMENT - T2-1B

LEVEL	UNIT NUMBER	UNIT AREA		BALCONY AREA		TOTAL AREA	
		SQM	SQFT	SQM	SQFT	SQM	SQFT
TOWER 2							
55F	500	62.98	711.14	5.04	54.25	71.02	785.69
500	62.98	711.14	5.04	54.25	71.02	785.69	
500	62.98	711.14	5.04	54.25	71.02	785.69	
500	62.98	711.14	5.04	54.25	71.02	785.69	
500	62.98	711.14	5.04	54.25	71.02	785.69	
500	62.98	711.14	5.04	54.25	71.02	785.69	
500	62.98	711.14	5.04	54.25	71.02	785.69	
500	62.98	711.14	5.04	54.25	71.02	785.69	



FLOOR PLAN 1. All dimensions are in imperial and metric, and measured from finish to finish excluding construction tolerances. 2. All materials, dimensions, and drawings are approximate only. 3. Information is subject to change without notice, at developer's absolute discretion. 4. Actual area may vary from the stated area. 5. Drawings not to scale. 6. All images used are for illustrative purposes only and do not represent the actual size, features, specifications, fittings, and furnishings. 7. The developer reserves the right to make revisions / alterations, at its absolute discretion, without any liability whatsoever.

