

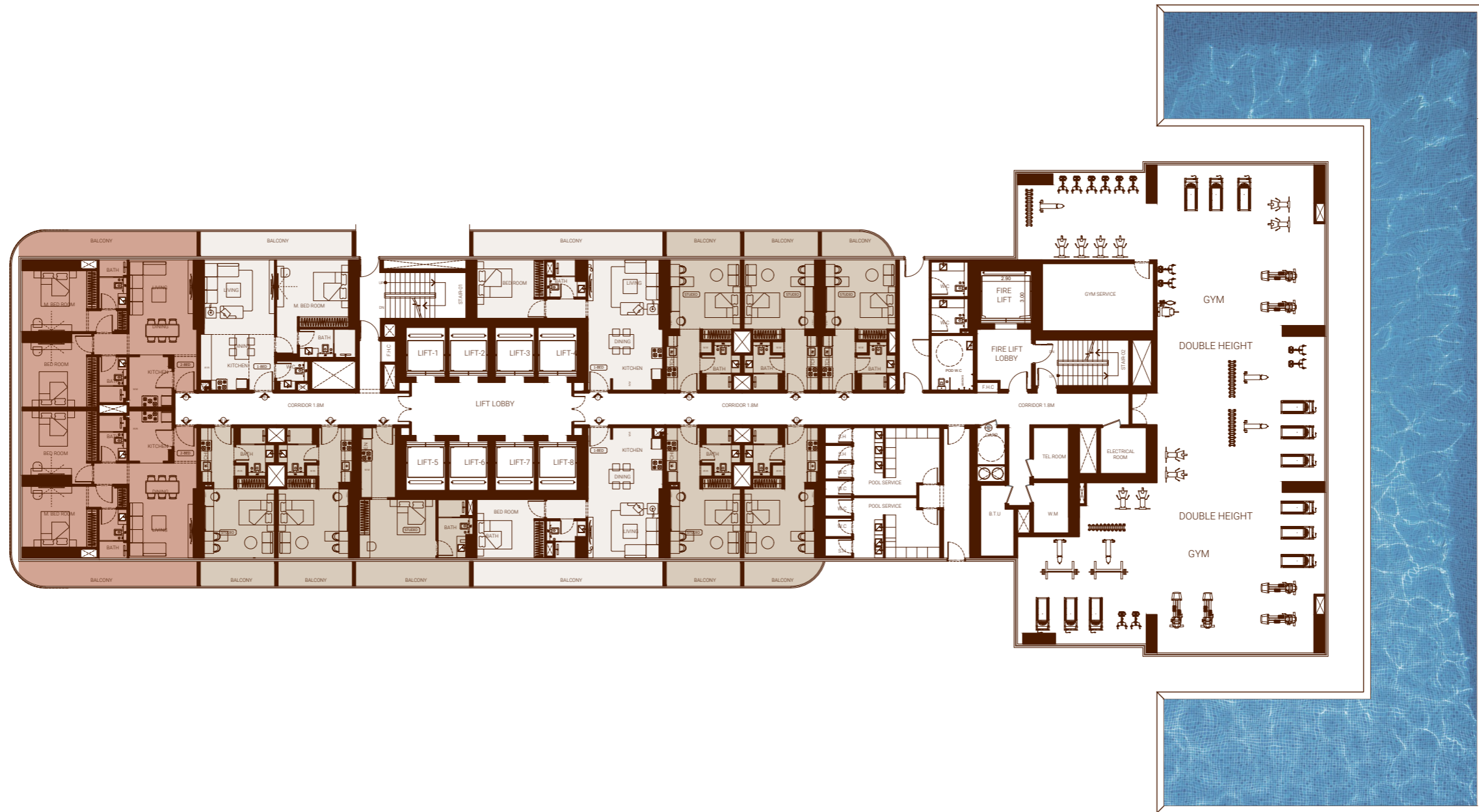
BINGHATTI

Hillviews



1st Floor Amenities

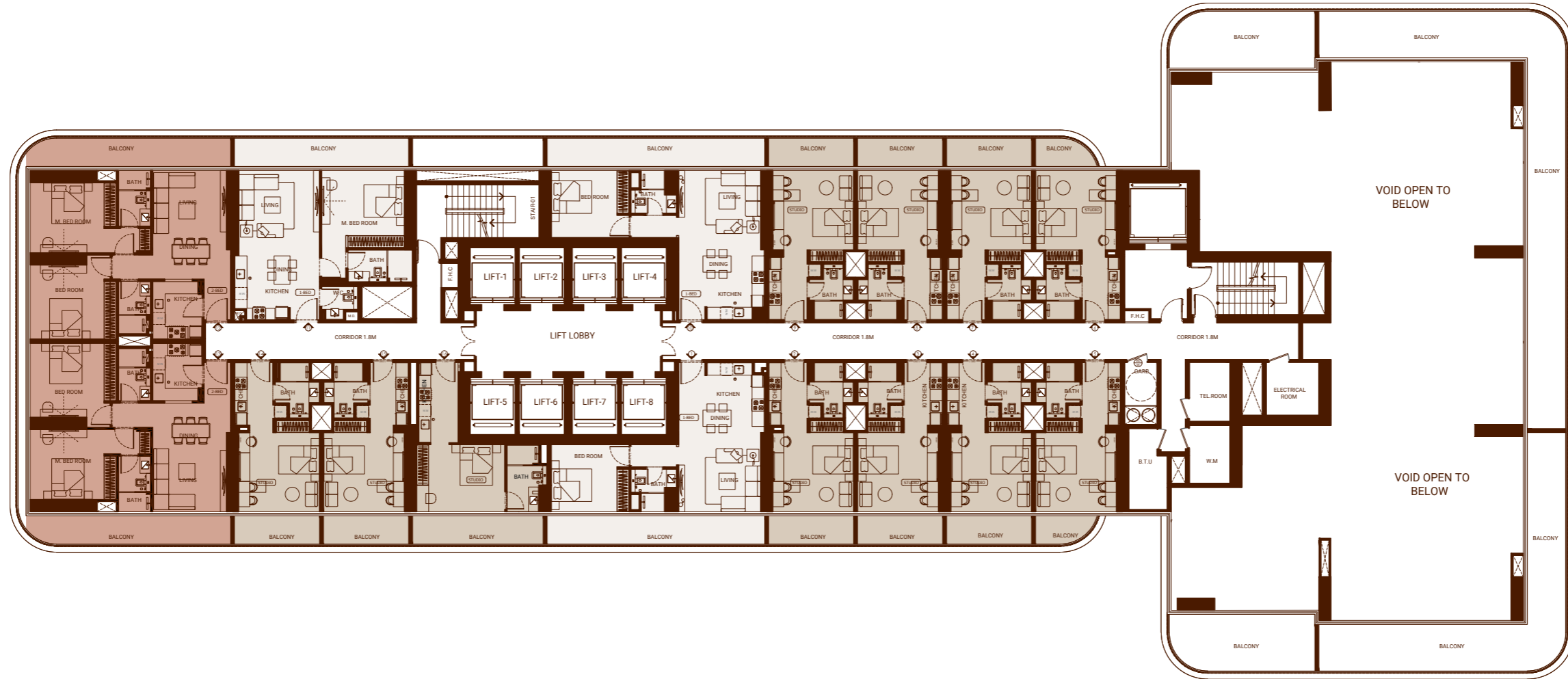
TYPICAL FLOOR PLAN



Disclaimer: 1. All room dimensions are measured to structural elements and exclude wall finishes and construction tolerances. 2. All dimensions have been provided by our consultant architects. 3. All materials, dimensions and drawings are approximate. Information is subject to change without notice. 4. Actual suite area may vary from the stated area. Drawings not to scale. The developer reserves the right to make revisions. 5. Calculation of suite area is measured as the area bounded by the centre line of demising or partition walls separating one unit from another unit, the exterior face of all exterior walls, and the exterior face of the corridor wall enclosing the adjoining unit. 6. Calculation of balcony area is measured as the area bounded by the centre line of demising or partition walls separating one unit from another unit, the outmost face of the enclosing guard and the external face of the adjoining balcony. 7. The units are measured at typical floor in the building. Columns may vary in size depending on the floor level. 8. For each unit type, unit sizes and details might be slightly different. Please refer to the sales and purchase agreement for the actual size of each specific unit.

2nd Floor

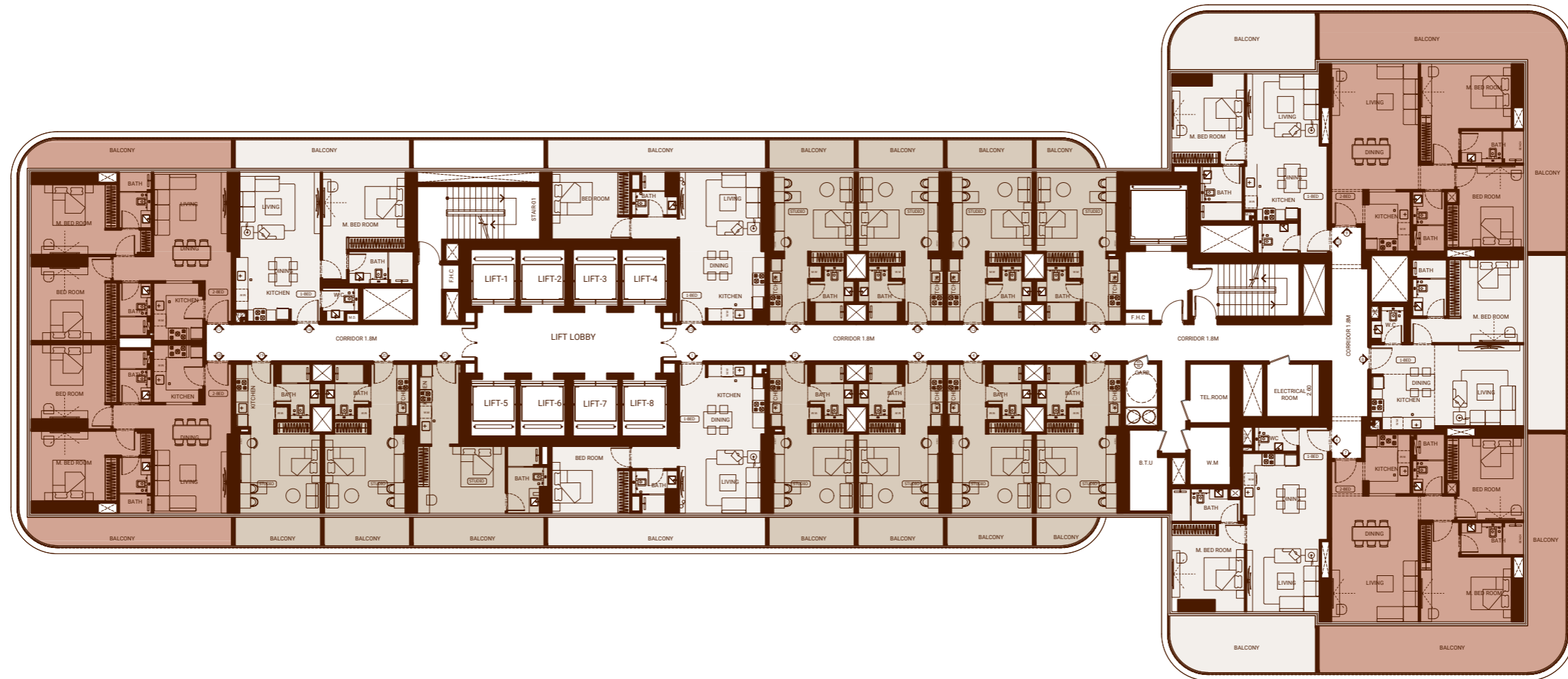
TYPICAL FLOOR PLAN



تنويه: ١. إن أبعاد الغرف يتم قياسها طبقاً للعناصر الهيكلية مع استبعاد تشطيبات الجدران ودرجة تحمل البناء. ٢. جميع القياسات تم تزويدها من قبل المهندسين المعماريين الاستشاريين لدينا. ٣. جميع المواد والأبعاد والرسومات تقريبية. تخضع المعلومات للتغيير دون إشعار مسبق. ٤. قد تختلف منطقة الجناح الفعلي عن المساحة المذكورة. الرسومات لا يتم توسيع نطاقها. يحتفظ المطور بالحق في إجراء التغييرات. ٥. يتم قياس حساب منطقة الجناح كمنطقة يحدها الخط المركزي للجدران الفاصلة أو الفاصلة التي تفصل وحدة عن وحدة أخرى، والوجه الخارجي لجميع الجدران الخارجية، والوجه الخارجي للممر المحيط بالوحدة المجاورة. ٦. ويقاس حساب منطقة الشرفة على أنها المنطقة التي يحدها الخط المركزي للجدران الفاصلة أو الفاصلة التي تفصل وحدة عن وحدة أخرى، والوجه الأبعد للحارس المرفق والوجه الخارجي للشرفة المجاورة. ٧. يتم قياس الوحدات في الطابق النموذجي في المبنى. قد تختلف الأعمدة في الحجم حسب مستوى الطابق. ٨. قد تكون أحجام الوحدات والتفاصيل المتعلقة بها مختلفة وذلك حسب نوع الوحدة. يرجى الرجوع إلى اتفاقية البيع والشراء لمعرفة الحجم الفعلي لكل وحدة.

Typical 3rd-9th & 19th-28th Floor

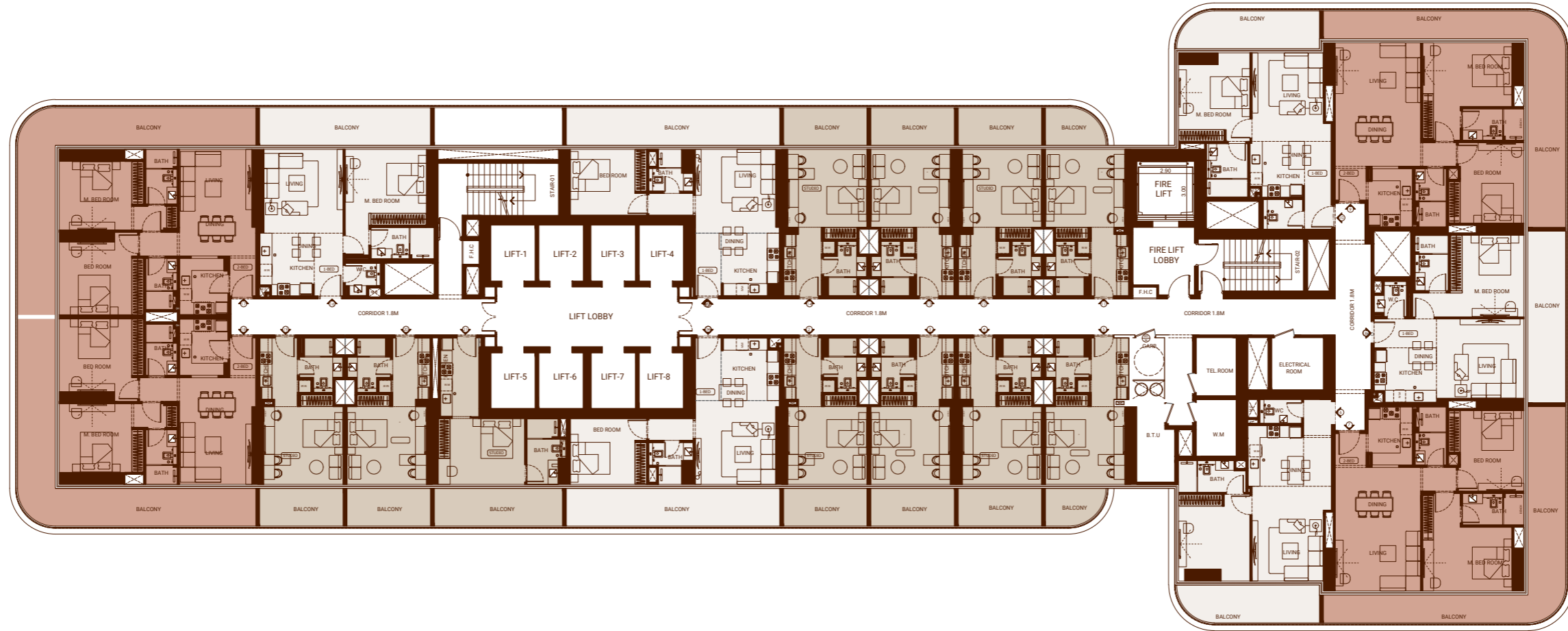
TYPICAL FLOOR PLAN



Disclaimer: 1. All room dimensions are measured to structural elements and exclude wall finishes and construction tolerances. 2. All dimensions have been provided by our consultant architects. 3. All materials, dimensions and drawings are approximate. Information is subject to change without notice. 4. Actual suite area may vary from the stated area. Drawings not to scale. The developer reserves the right to make revisions. 5. Calculation of suite area is measured as the area bounded by the centre line of demising or partition walls separating one unit from another unit, the exterior face of all exterior walls, and the exterior face of the corridor wall enclosing the adjoining unit. 6. Calculation of balcony area is measured as the area bounded by the centre line of demising or partition walls separating one unit from another unit, the outmost face of the enclosing guard and the external face of the adjoining balcony. 7. The units are measured at typical floor in the building. Columns may vary in size depending on the floor level. 8. For each unit type, unit sizes and details might be slightly different. Please refer to the sales and purchase agreement for the actual size of each specific unit.

Typical 10th-15th & 17th-18th & 29th-38th Floor

TYPICAL FLOOR PLAN

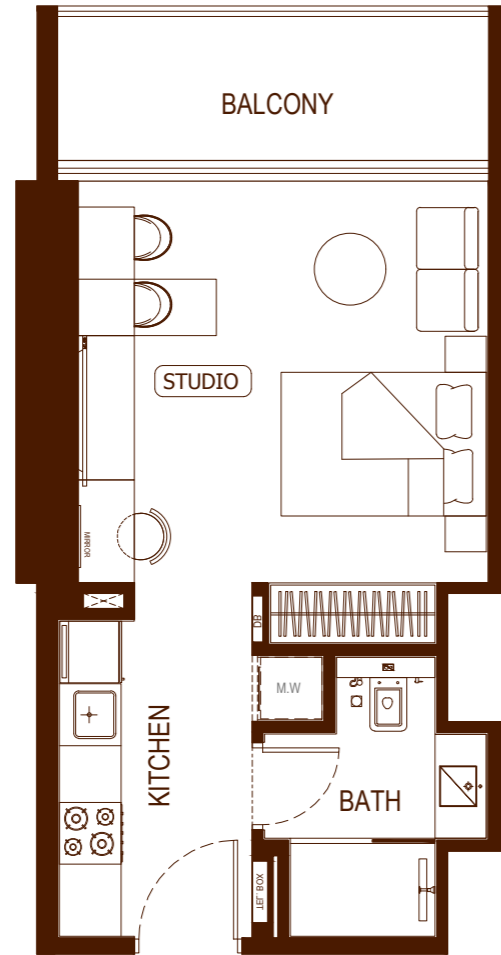


تنويه: ١. إن أبعاد الغرف يتم قياسها طبقاً للعناصر الهيكلية مع استبعاد تشطيبات الجدران ودرجة تحمل البناء. ٢. جميع القياسات تم تزويدها من قبل المهندسين المعماريين الاستشاريين لدينا. ٣. جميع المواد والأبعاد والرسومات تقريبية. تخضع المعلومات للتغيير دون إشعار مسبق. ٤. قد تختلف منطقة الجناح الفعلي عن المساحة المذكورة. الرسومات لا يتم توسيع نطاقها. يحتفظ المطور بالحق في إجراء التغييرات. ٥. يتم قياس حساب منطقة الجناح كمجموعة يحدها الخط المركزي للجدران الفاصلة أو الفاصلة التي تفصل وحدة عن وحدة أخرى، والوجه الخارجي لجميع الجدران الخارجية، والوجه الخارجي لجدار الممر المحيط بالوحدة المجاورة. ٦. ويقاس حساب منطقة الشرفة على أنها المنطقة التي يحدها الخط المركزي للحدود الفاصلة أو الفاصلة التي تفصل وحدة عن وحدة أخرى، والوجه الأبعد للحارس المرفق والوجه الخارجي للشرفة المجاورة. ٧. يتم قياس الوحدات في الطابق النموذجي في المبنى. قد تختلف الأعمدة في الحجم حسب مستوى الطابق. ٨. قد تكون أحجام الوحدات والتفاصيل المتعلقة بها مختلفة وذلك حسب نوع الوحدة. يرجى الرجوع إلى اتفاقية البيع والشراء لمعرفة الحجم الفعلي لكل وحدة.

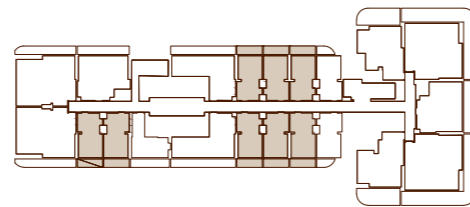


Studio - Type 01

UNIT FLOOR PLAN

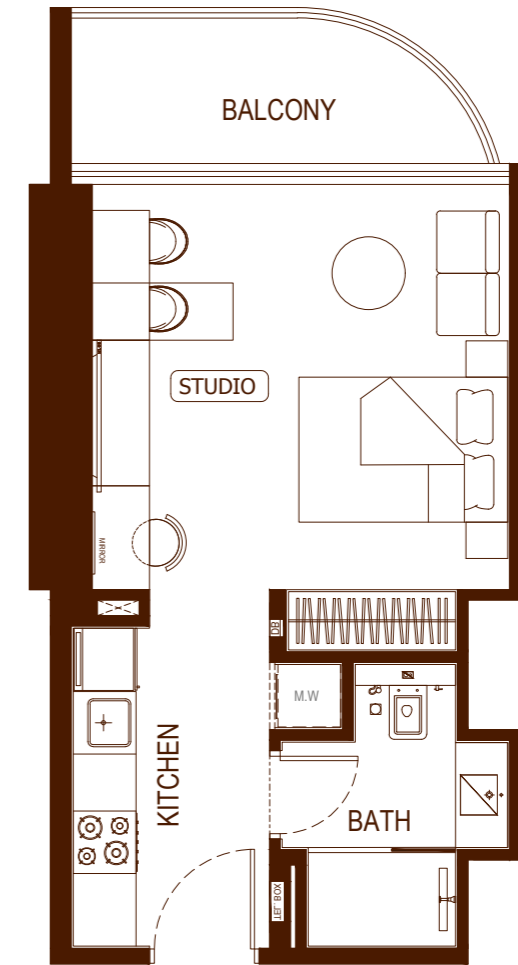


AREA	SQ. M	SQ. FT
SUITE AREA	31.63m ²	340.46ft ²
BALCONY AREA	4.24m ²	45.64ft ²
TOTAL UNIT AREA	35.87m ²	386.10ft ²

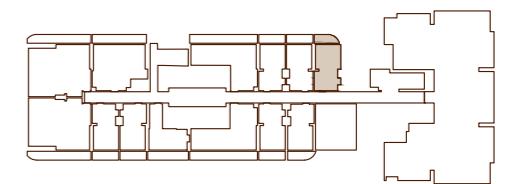


Studio - Type 02

UNIT FLOOR PLAN



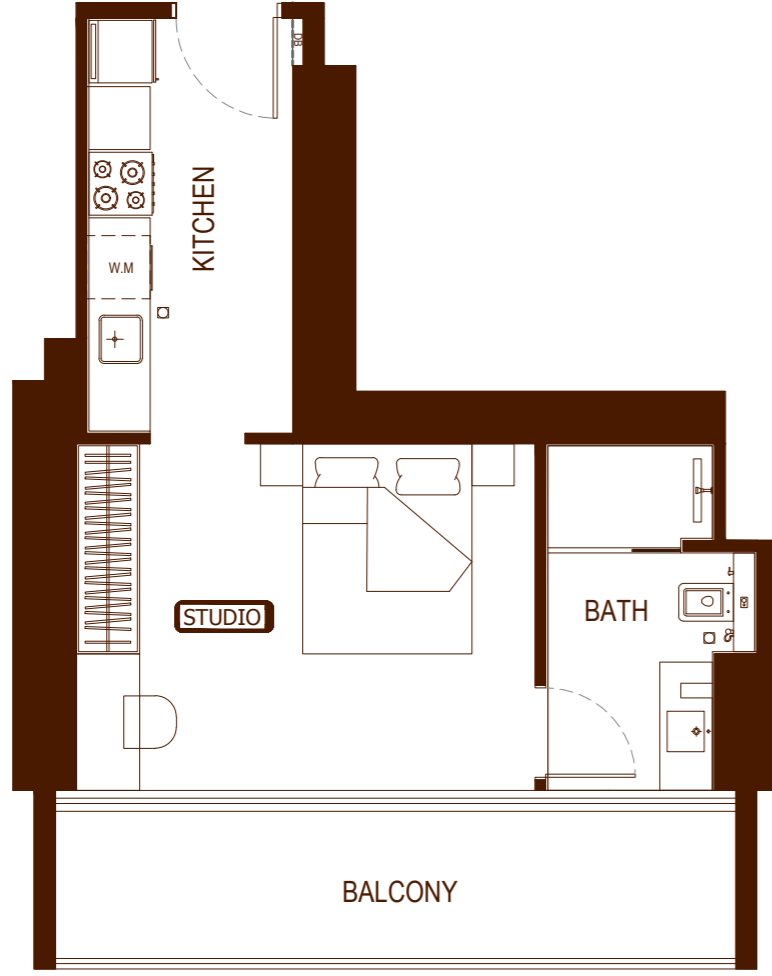
AREA	SQ. M	SQ. FT
SUITE AREA	31.63m ²	340.46ft ²
BALCONY AREA	5.73m ²	61.68ft ²
TOTAL UNIT AREA	37.36m ²	402.14ft ²



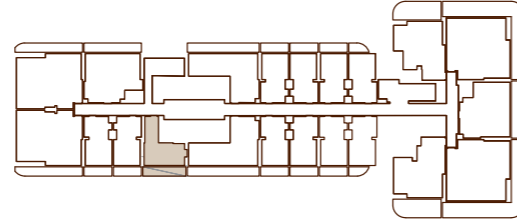
Disclaimer: 1. All room dimensions are measured to structural elements and exclude wall finishes and construction tolerances. 2. All dimensions have been provided by our consultant architects. 3. All materials, dimensions and drawings are approximate. Information is subject to change without notice. 4. Actual suite area may vary from the stated area. Drawings not to scale. The developer reserves the right to make revisions. 5. Calculation of suite area is measured as the area bounded by the centre line of demising or partition walls separating one unit from another unit, the exterior face of all exterior walls, and the exterior face of the corridor wall enclosing the adjoining unit. 6. Calculation of balcony area is measured as the area bounded by the centre line of demising or partition walls separating one unit from another unit, the outmost face of the enclosing guard and the external face of the adjoining balcony. 7. The units are measured at typical floor in the building. Columns may vary in size depending on the floor level. 8. For each unit type, unit sizes and details might be slightly different. Please refer to the sales and purchase agreement for the actual size of each specific unit.

Studio - Type 03

UNIT FLOOR PLAN

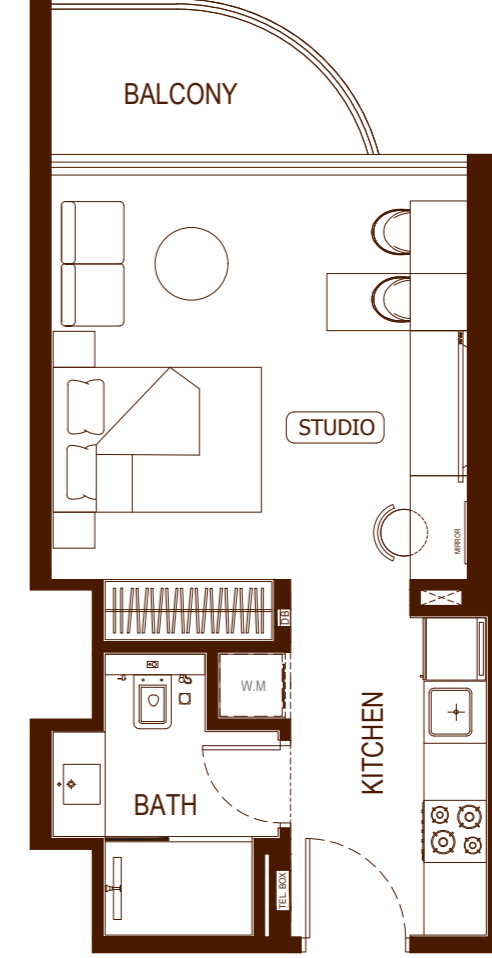


AREA	SQ. M	SQ. FT
SUITE AREA	33.26m ²	358.01ft ²
BALCONY AREA	10.31m ²	110.98ft ²
TOTAL UNIT AREA	43.57m ²	468.98ft ²



Studio - Type 04

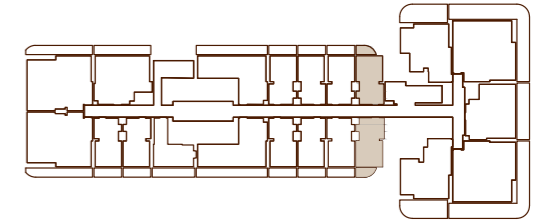
UNIT FLOOR PLAN



AREA	SQ. M	SQ. FT
SUITE AREA	31.63 m ²	340.46 ft ²
BALCONY AREA	4.24 m ²	45.64 ft ²
TOTAL UNIT AREA	35.87 m ²	386.10 ft ²

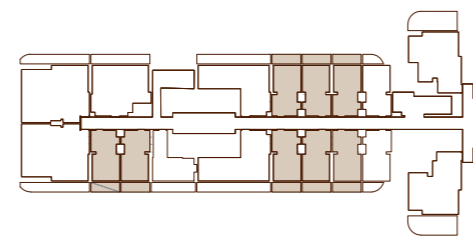
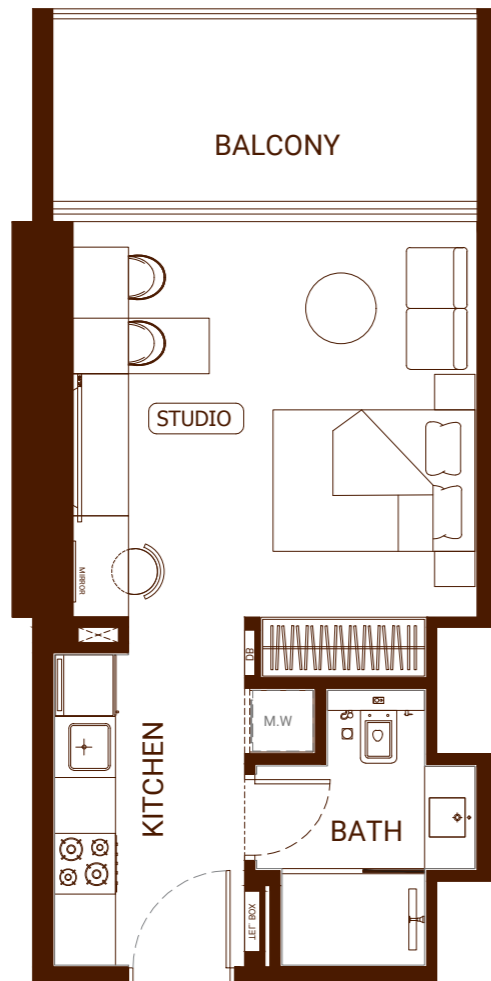
FLAT DESIGN COMPONENTS

STUDIO	16 m ²
KITCHEN	6 m ²
BATH	5 m ²



Studio - Type 05

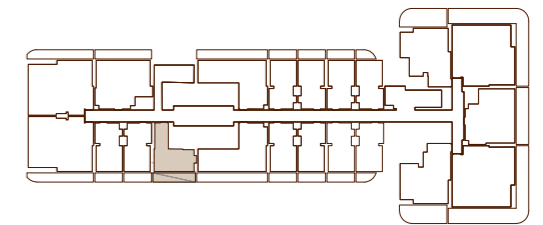
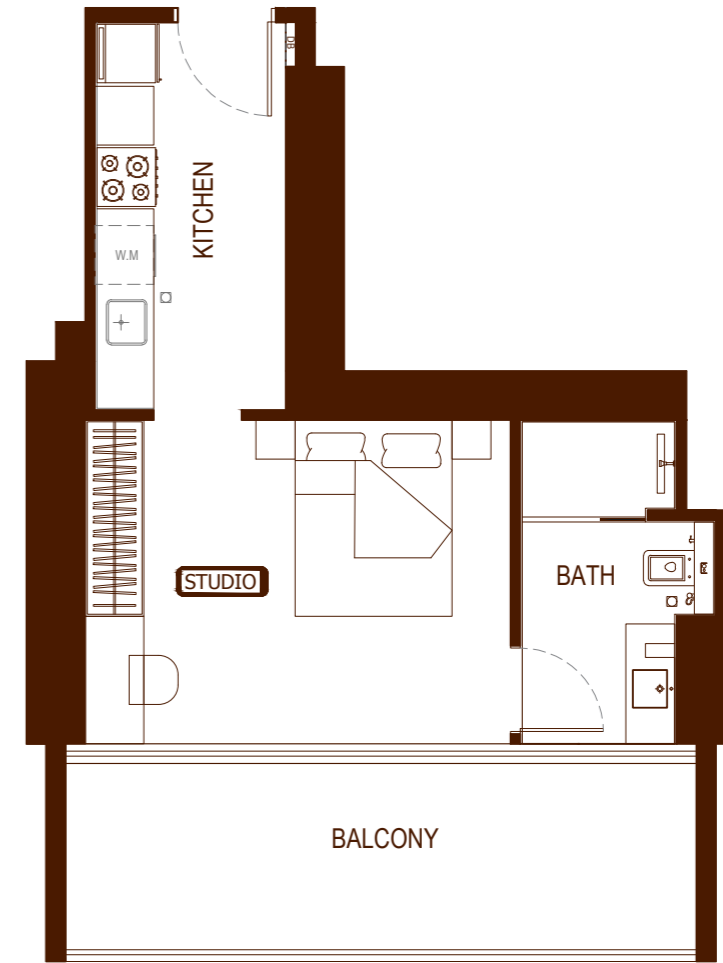
UNIT FLOOR PLAN



AREA	SQ. M	SQ. FT
SUITE AREA	31.60m ²	340.14ft ²
BALCONY AREA	9.02 m ²	97.09ft ²
TOTAL UNIT AREA	40.62 m ²	437.23ft ²

Studio - Type 06

UNIT FLOOR PLAN

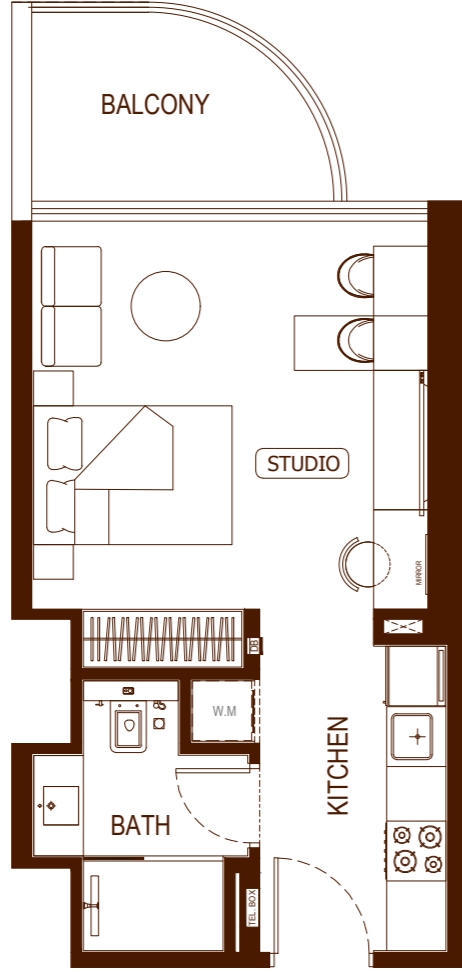


AREA	SQ. M	SQ. FT
SUITE AREA	33.26m ²	358.01ft ²
BALCONY AREA	13.63m ²	146.71ft ²
TOTAL UNIT AREA	46.89m ²	504.72ft ²

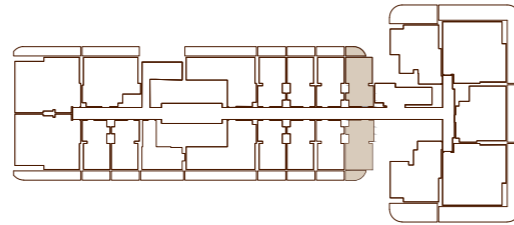
Disclaimer: 1. All room dimensions are measured to structural elements and exclude wall finishes and construction tolerances. 2. All dimensions have been provided by our consultant architects. 3. All materials, dimensions and drawings are approximate. Information is subject to change without notice. 4. Actual suite area may vary from the stated area. Drawings not to scale. The developer reserves the right to make revisions. 5. Calculation of suite area is measured as the area bounded by the centre line of demising or partition walls separating one unit from another unit, the exterior face of all exterior walls, and the exterior face of the corridor wall enclosing the adjoining unit. 6. Calculation of balcony area is measured as the area bounded by the centre line of demising or partition walls separating one unit from another unit, the outmost face of the enclosing guard and the external face of the adjoining balcony. 7. The units are measured at typical floor in the building. Columns may vary in size depending on the floor level. 8. For each unit type, unit sizes and details might be slightly different. Please refer to the sales and purchase agreement for the actual size of each specific unit.

Studio - Type 07

UNIT FLOOR PLAN

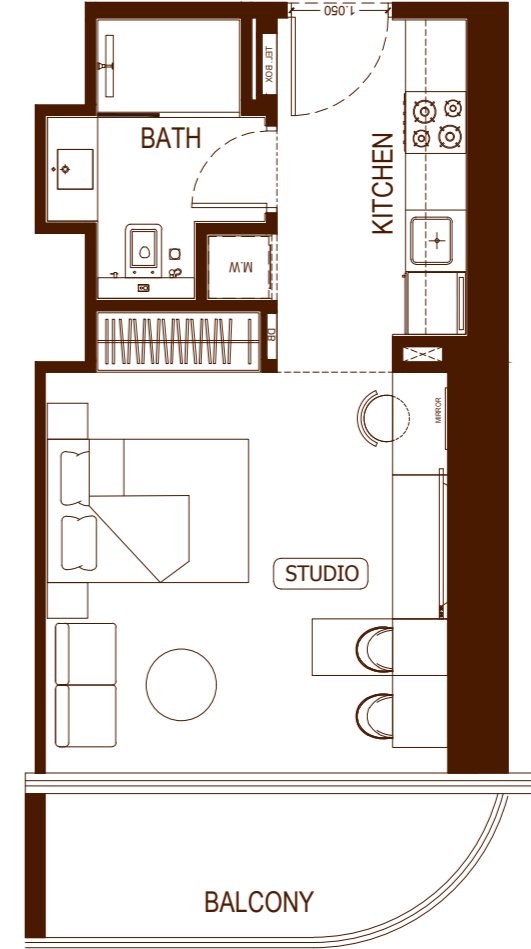


AREA	SQ. M	SQ. FT
SUITE AREA	31.63m ²	340.46ft ²
BALCONY AREA	5.74m ²	61.78ft ²
TOTAL UNIT AREA	37.37m ²	402.25ft ²

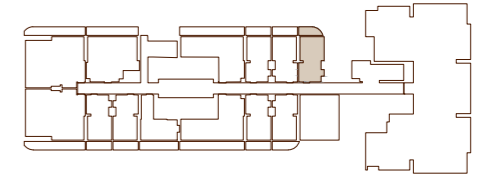


Studio - Type 08

UNIT FLOOR PLAN



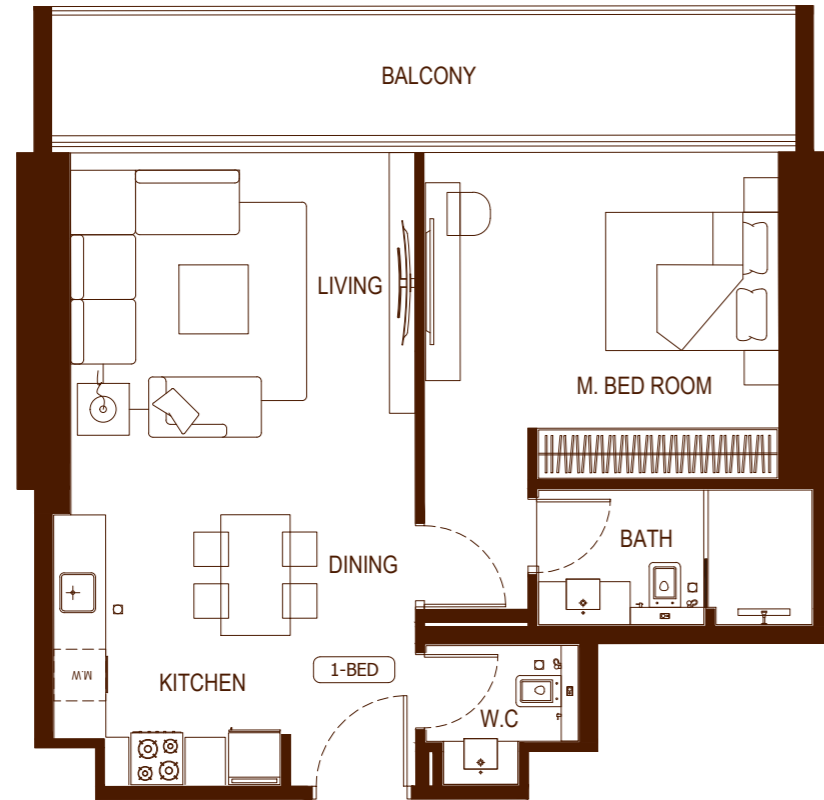
AREA	SQ. M	SQ. FT
SUITE AREA	31.95m ²	343.91ft ²
BALCONY AREA	6.49m ²	69.86ft ²
TOTAL UNIT AREA	38.44m ²	412.76ft ²





1 Bedroom - Type 1

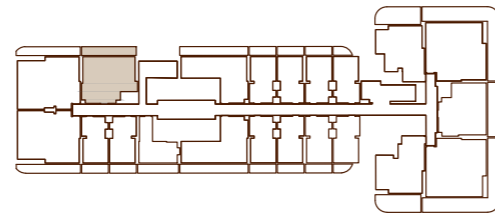
UNIT FLOOR PLAN



AREA	SQ. M	SQ. FT
SUITE AREA	61.20m ²	658.75ft ²
BALCONY AREA	13.64m ²	146.82ft ²
TOTAL UNIT AREA	74.84m ²	805.57ft ²

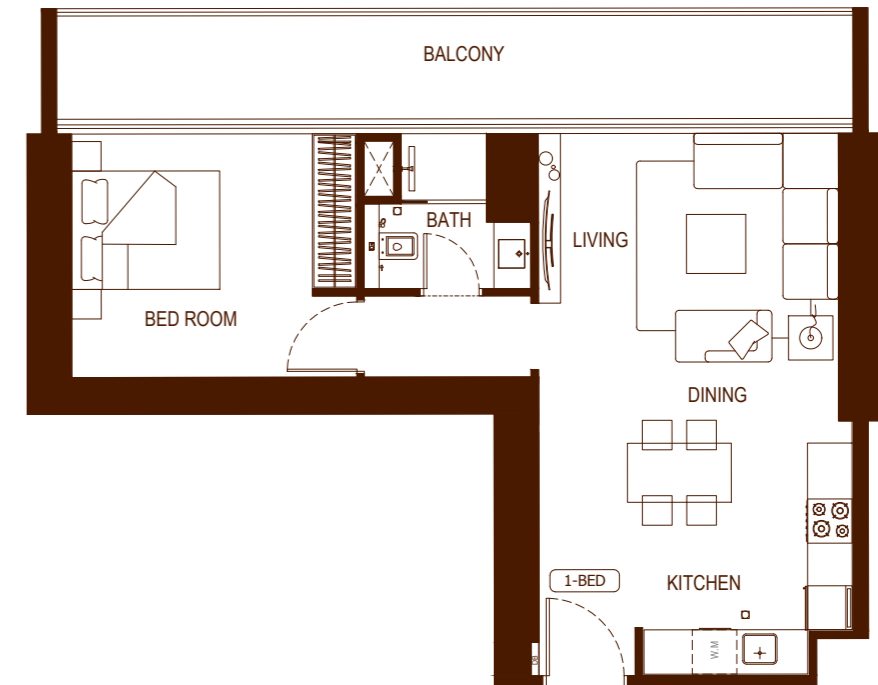
FLAT DESIGN COMPONENTS

M.BATH	5 m ²
M.BEDROOM	17 m ²
W.C	3 m ²
KITCHEN & DINING	13 m ²
LIVING	17 m ²



1 Bedroom - Type 2

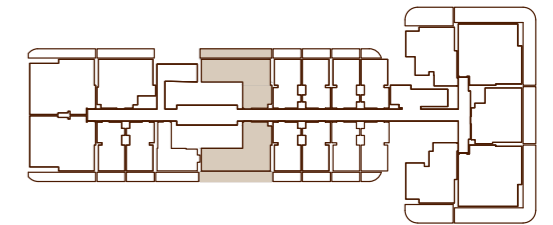
UNIT FLOOR PLAN



AREA	SQ. M	SQ. FT
SUITE AREA	56.53m ²	608.48ft ²
BALCONY AREA	116.97 m ²	182.66ft ²
TOTAL UNIT AREA	73.5m ²	791.15ft ²

FLAT DESIGN COMPONENTS

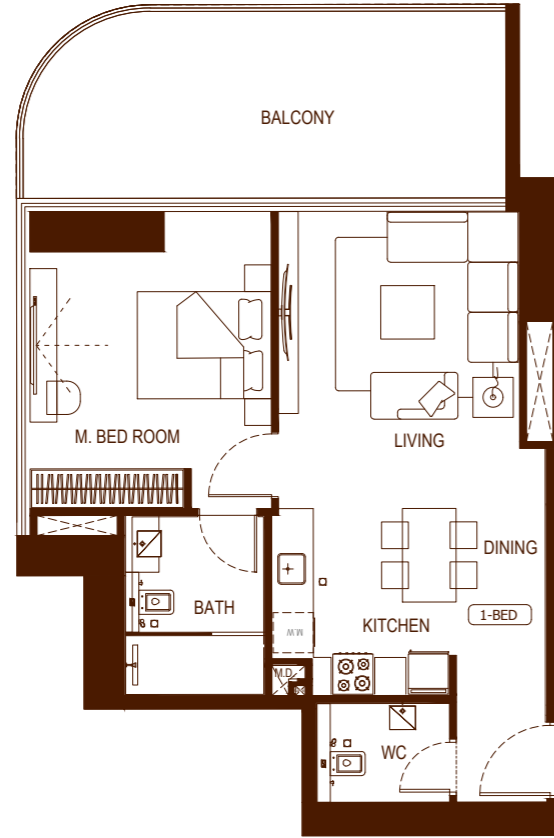
BATH	4 m ²
BEDROOM	13 m ²
LIVING	16 m ²
KITCHEN & DINING	13 m ²
CORRIDOR	4 m ²



Disclaimer: 1. All room dimensions are measured to structural elements and exclude wall finishes and construction tolerances. 2. All dimensions have been provided by our consultant architects. 3. All materials, dimensions and drawings are approximate. Information is subject to change without notice. 4. Actual suite area may vary from the stated area. Drawings not to scale. The developer reserves the right to make revisions. 5. Calculation of suite area is measured as the area bounded by the centre line of demising or partition walls separating one unit from another unit, the exterior face of all exterior walls, and the exterior face of the corridor wall enclosing the adjoining unit. 6. Calculation of balcony area is measured as the area bounded by the centre line of demising or partition walls separating one unit from another unit, the outmost face of the enclosing guard and the external face of the adjoining balcony. 7. The units are measured at typical floor in the building. Columns may vary in size depending on the floor level. 8. For each unit type, unit sizes and details might be slightly different. Please refer to the sales and purchase agreement for the actual size of each specific unit.

1 Bedroom - Type 3

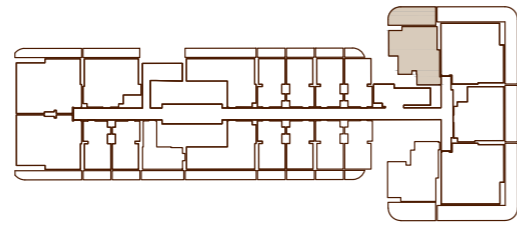
UNIT FLOOR PLAN



AREA	SQ. M	SQ. FT
SUITE AREA	59.49 m ²	640.35 ft ²
BALCONY AREA	21.69 m ²	233.47 ft ²
TOTAL UNIT AREA	81.18 m ²	873.81 ft ²

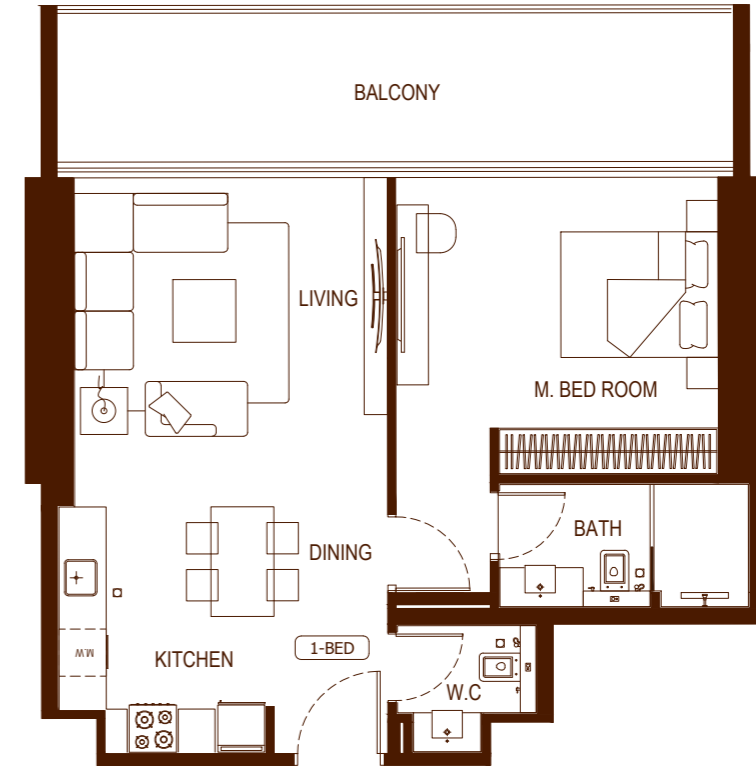
FLAT DESIGN COMPONENTS

M.BATH	6 m ²
M.BEDROOM	15 m ²
W.C	3 m ²
KITCHEN & DINING	10 m ²
FOYER	3 m ²
LIVING	16 m ²



1 Bedroom - Type 4

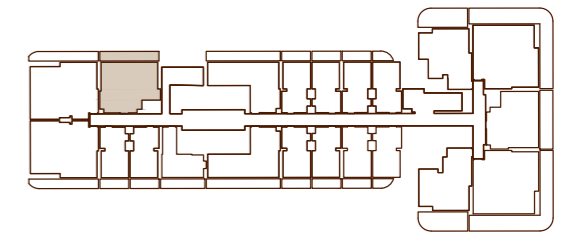
UNIT FLOOR PLAN



AREA	SQ. M	SQ. FT
SUITE AREA	61.20 m ²	658.75 ft ²
BALCONY AREA	18.04 m ²	194.18 ft ²
TOTAL UNIT AREA	79.24 m ²	852.93 ft ²

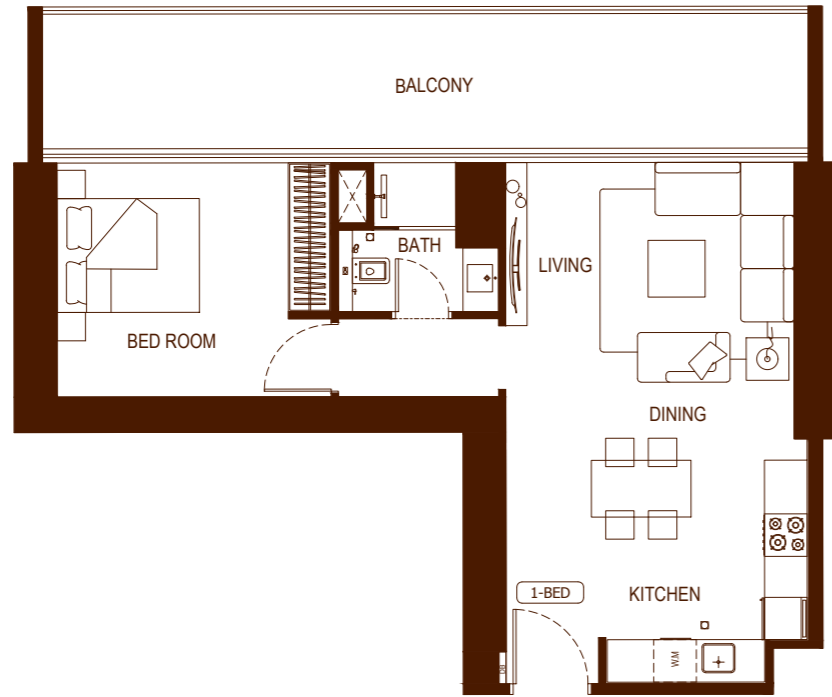
FLAT DESIGN COMPONENTS

M.BATH	5 m ²
M.BEDROOM	17 m ²
W.C	3 m ²
KITCHEN & DINING	13 m ²
LIVING	17 m ²



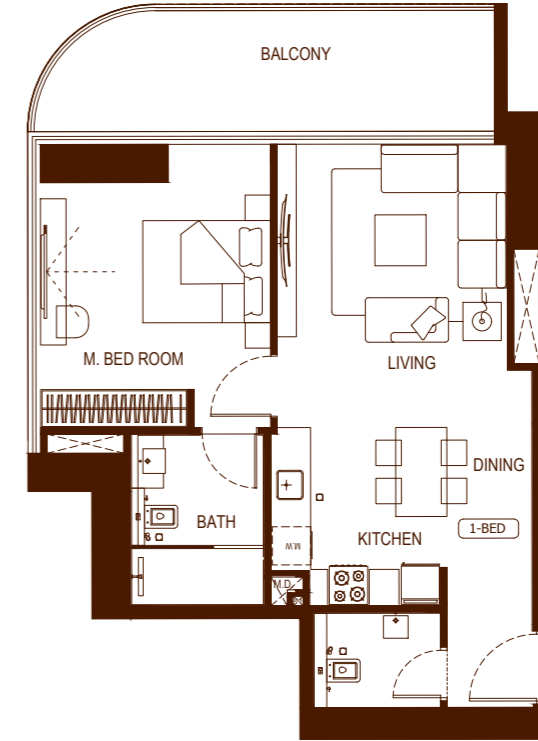
1 Bedroom - Type 5

UNIT FLOOR PLAN

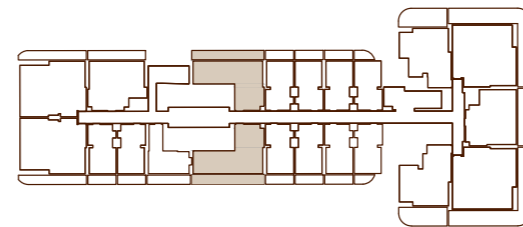


1 Bedroom - Type 6

UNIT FLOOR PLAN

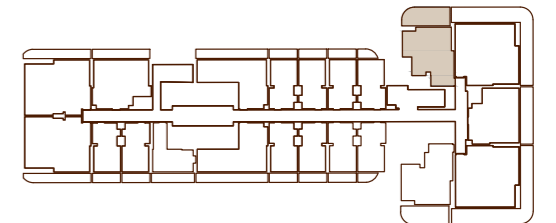


AREA	SQ. M	SQ. FT
SUITE AREA	56.53 m ²	608.48 ft ²
BALCONY AREA	22.45 m ²	241.65 ft ²
TOTAL UNIT AREA	78.98 m ²	850.13 ft ²



FLAT DESIGN COMPONENTS	
BATH	4 m ²
BEDROOM	13 m ²
LIVING	16 m ²
KITCHEN & DINING	13 m ²
CORRIDOR	4 m ²

AREA	SQ. M	SQ. FT
SUITE AREA	59.49 m ²	640.35 ft ²
BALCONY AREA	15.08 m ²	162.32 ft ²
TOTAL UNIT AREA	74.57 m ²	802.66 ft ²

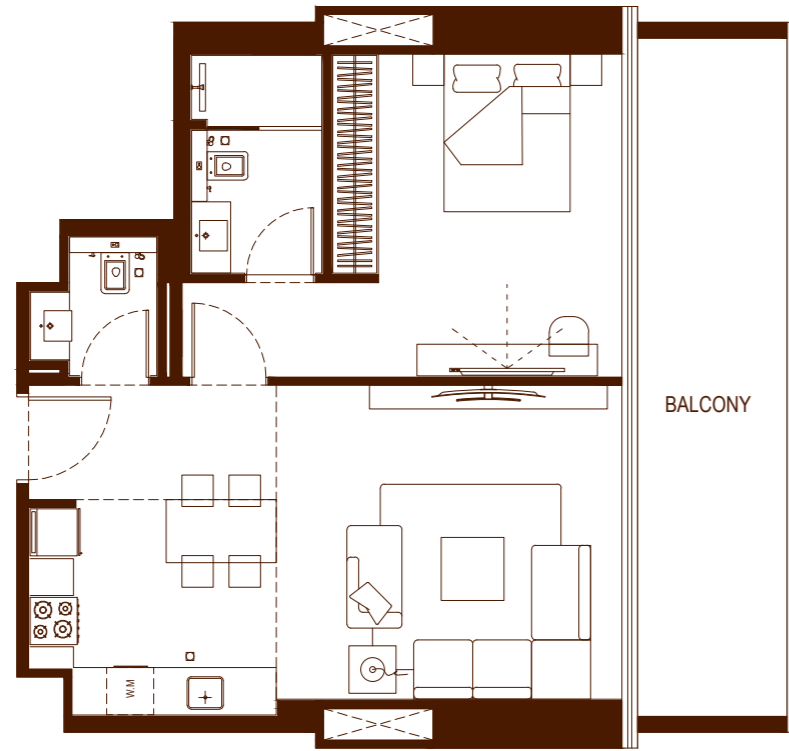


FLAT DESIGN COMPONENTS	
M.BATH	6 m ²
M.BEDROOM	15 m ²
W.C	3 m ²
KITCHEN & DINING	10 m ²
FOYER	3 m ²
LIVING	16 m ²

Disclaimer: 1. All room dimensions are measured to structural elements and exclude wall finishes and construction tolerances. 2. All dimensions have been provided by our consultant architects. 3. All materials, dimensions and drawings are approximate. Information is subject to change without notice. 4. Actual suite area may vary from the stated area. Drawings not to scale. The developer reserves the right to make revisions. 5. Calculation of suite area is measured as the area bounded by the centre line of demising or partition walls separating one unit from another unit, the exterior face of all exterior walls, and the exterior face of the corridor wall enclosing the adjoining unit. 6. Calculation of balcony area is measured as the area bounded by the centre line of demising or partition walls separating one unit from another unit, the outmost face of the enclosing guard and the external face of the adjoining balcony. 7. The units are measured at typical floor in the building. Columns may vary in size depending on the floor level. 8. For each unit type, unit sizes and details might be slightly different. Please refer to the sales and purchase agreement for the actual size of each specific unit.

1 Bedroom - Type 7

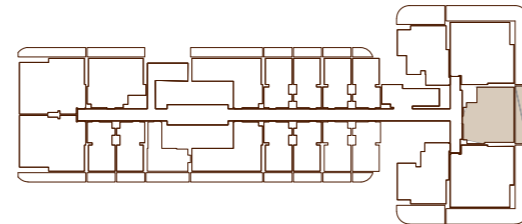
UNIT FLOOR PLAN



AREA	SQ. M	SQ. FT
SUITE AREA	61.20m ²	658.75ft ²
BALCONY AREA	18.04 m ²	194.18 ft ²
TOTAL UNIT AREA	79.24 m ²	852.93 ft ²

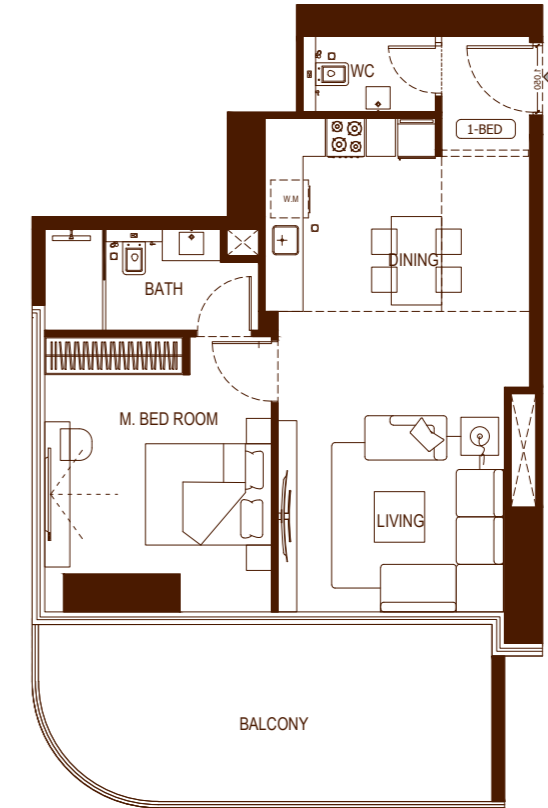
FLAT DESIGN COMPONENTS

M.BATH	5 m ²
M.BEDROOM	18 m ²
W.C	3 m ²
KITCHEN & DINING	13 m ²
LIVING	18 m ²



1 Bedroom - Type 8

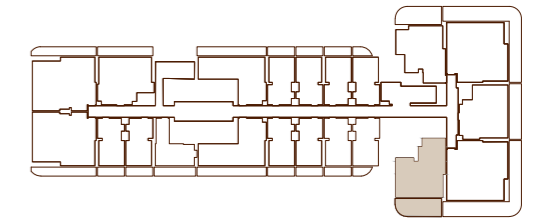
UNIT FLOOR PLAN



AREA	SQ. M	SQ. FT
SUITE AREA	60.60 m ²	652.29 ft ²
BALCONY AREA	21.75 m ²	234.12 ft ²
TOTAL UNIT AREA	82.35 m ²	886.41 ft ²

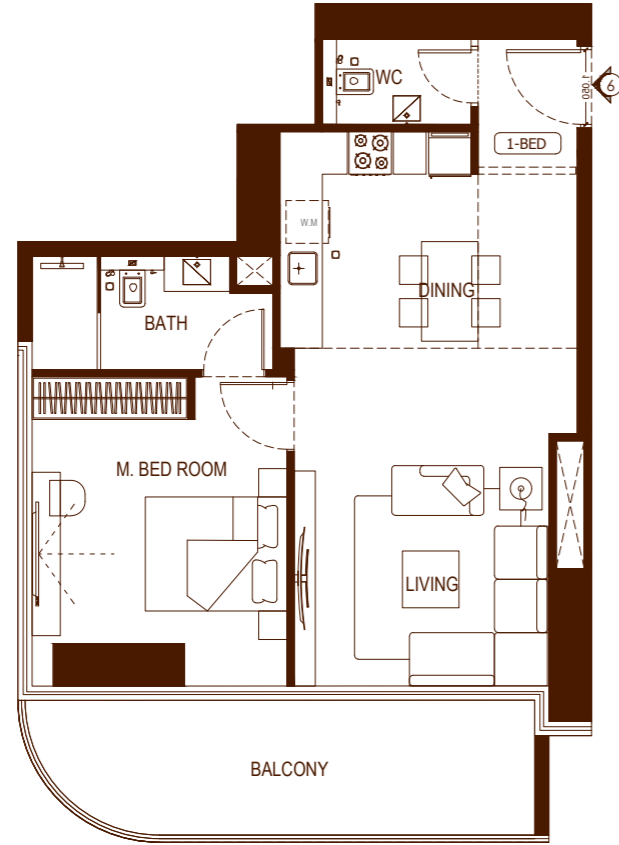
FLAT DESIGN COMPONENTS

M.BATH	5 m ²
M.BEDROOM	14 m ²
W.C	3 m ²
KITCHEN & DINING	12 m ²
FOYER	3 m ²
LIVING	18 m ²



1 Bedroom - Type 9

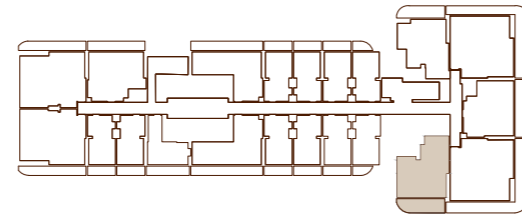
UNIT FLOOR PLAN



AREA	SQ. M	SQ. FT
SUITE AREA	60.76 m ²	654.02 ft ²
BALCONY AREA	14.98 m ²	161.24 ft ²
TOTAL UNIT AREA	75.74 m ²	815.26 ft ²

FLAT DESIGN COMPONENTS

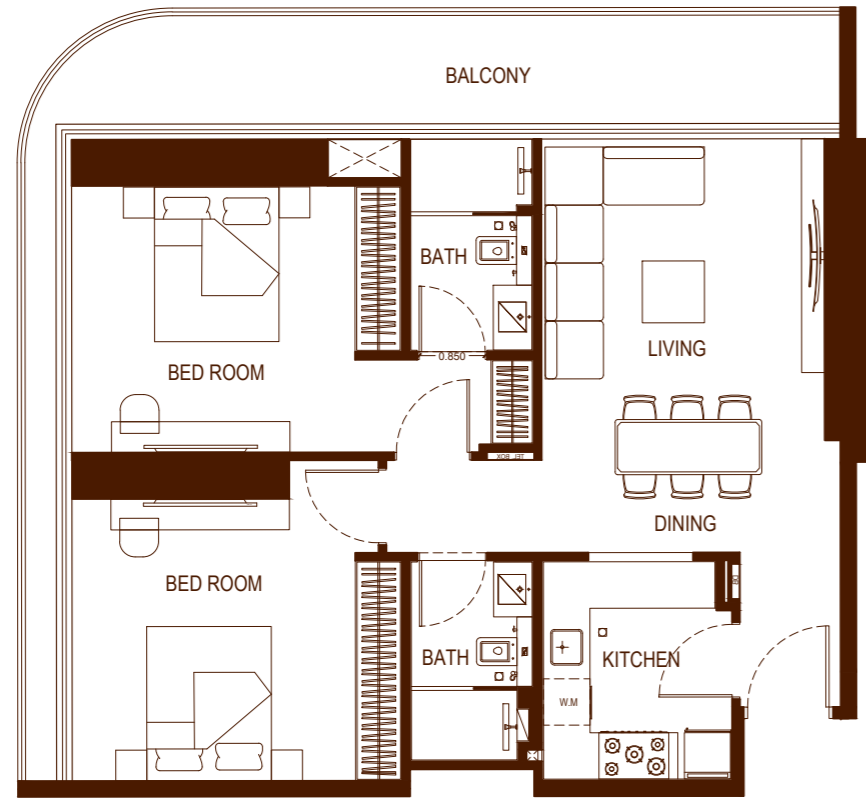
M.BATH	5 m ²
M.BEDROOM	14 m ²
W.C	3 m ²
KITCHEN & DINING	12 m ²
FOYER	3 m ²
LIVING	18 m ²



تنويه: ١. إن أبعاد الغرف يتم قياسها طبقاً للعناصر الهيكلية مع استبعاد تنشيطات الجدران ودرجة تحمل البناء. ٢. جميع القياسات تم تزويدها من قبل المهندسين المعماريين الاستشاريين لدينا. ٣. جميع المواد والأبعاد والرسومات تقريبية. تخضع المعلومات للتغيير دون إشعار مسبق. ٤. قد تختلف منطقة الجناح الفعلي عن المساحة المذكورة. الرسومات لا يتم توسيع نطاقها. يحتفظ المطور بالحق في إجراء التغييرات. ٥. يتم قياس حساب منطقة الجناح كمنطقة يحدها الخط المركزي للجدران الفاصلة أو الفاصلة التي تفصل وحدة عن وحدة أخرى، والوجه الخارجي لجميع الجدران الخارجية، والوجه الخارجي لجدار الممر المحيط بالوحدة المجاورة. ٦. ويقاس حساب منطقة الشرفة على أنها المنطقة التي يحدها الخط المركزي للجدران الفاصلة أو الفاصلة التي تفصل وحدة عن وحدة أخرى، والوجه الأبعد للحارس المرفق والوجه الخارجي للشرفة المجاورة. ٧. يتم قياس الوحدات في الطابق النموذجي في المبنى. قد تختلف الأعمدة في الحجم حسب مستوى الطابق. ٨. قد تكون أحجام الوحدات والتفاصيل المتعلقة بها مختلفة وذلك حسب نوع الوحدة. يرجى الرجوع إلى اتفاقية البيع والشراء لمعرفة الحجم الفعلي لكل وحدة.

2 Bedroom - Type 1

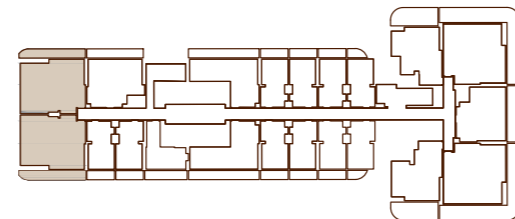
UNIT FLOOR PLAN



AREA	SQ. M	SQ. FT
SUITE AREA	81.91 m ²	881.67 ft ²
BALCONY AREA	21.73 m ²	233.90 ft ²
TOTAL UNIT AREA	103.64 m ²	1115.57 ft ²

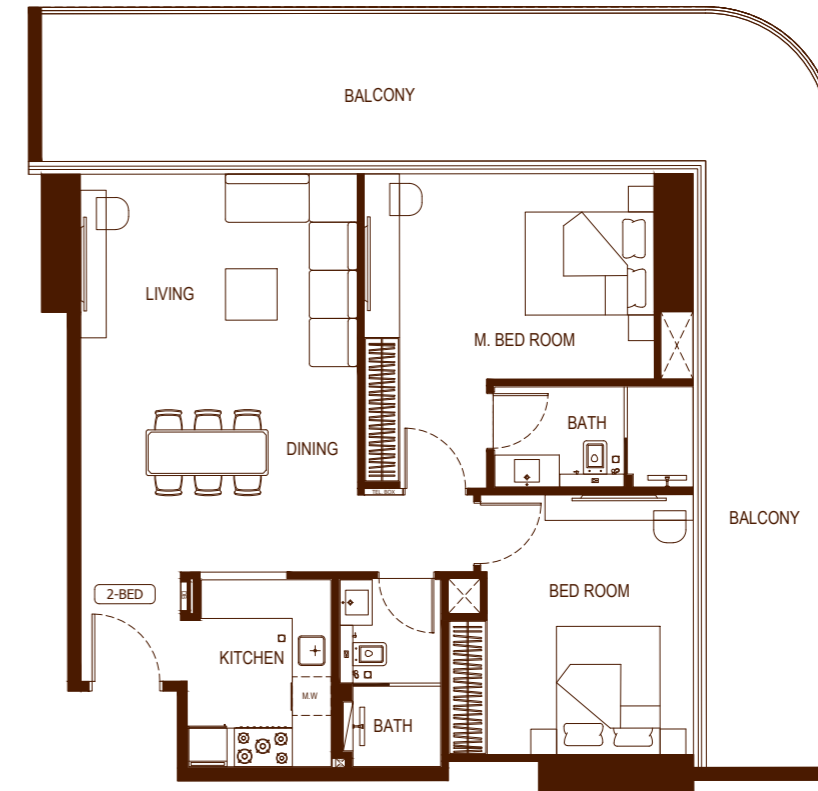
FLAT DESIGN COMPONENTS

M.BATH	4 m ²
M.BEDROOM	17 m ²
BATH	4 m ²
KITCHEN	7 m ²
CORRIDOR	5 m ²
BEDROOM	16 m ²
LIVING & DINING	20 m ²



2 Bedroom - Type 2

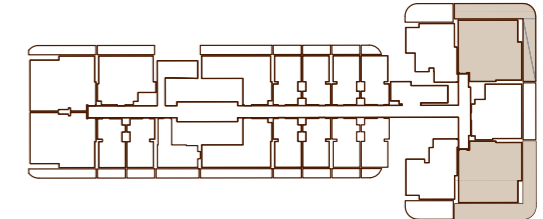
UNIT FLOOR PLAN



AREA	SQ. M	SQ. FT
SUITE AREA	87.29 m ²	939.58 ft ²
BALCONY AREA	49.71 m ²	535.07 ft ²
TOTAL UNIT AREA	137.00 m ²	1474.66 ft ²

FLAT DESIGN COMPONENTS

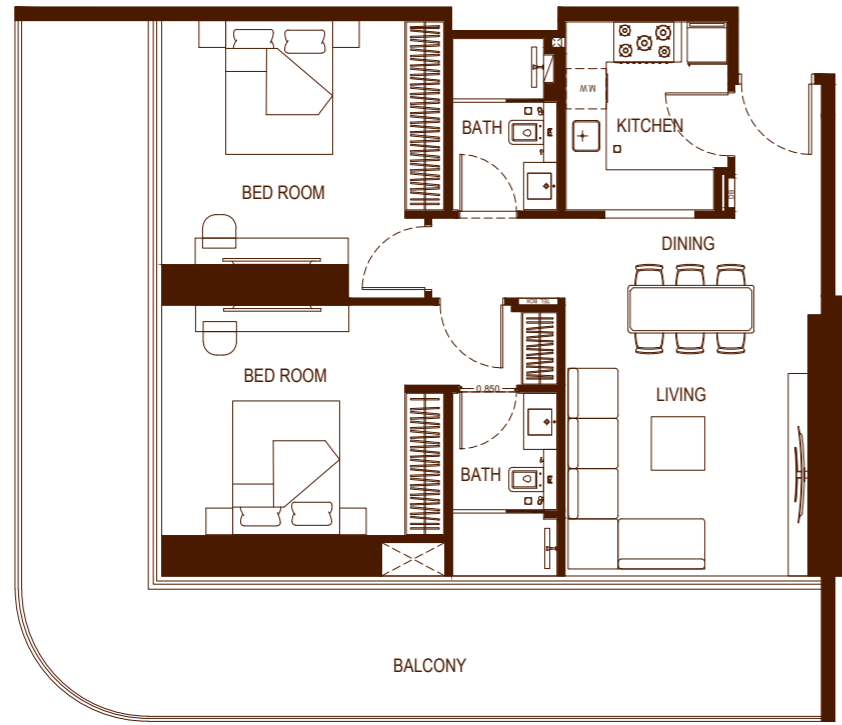
M.BATH	5 m ²
M.BEDROOM	18 m ²
BATH	5 m ²
KITCHEN	7 m ²
CORRIDOR	5 m ²
BEDROOM	14 m ²
LIVING & DINING	27 m ²



Disclaimer: 1. All room dimensions are measured to structural elements and exclude wall finishes and construction tolerances. 2. All dimensions have been provided by our consultant architects. 3. All materials, dimensions and drawings are approximate. Information is subject to change without notice. 4. Actual suite area may vary from the stated area. Drawings not to scale. The developer reserves the right to make revisions. 5. Calculation of suite area is measured as the area bounded by the centre line of demising or partition walls separating one unit from another unit, the exterior face of all exterior walls, and the exterior face of the corridor wall enclosing the adjoining unit. 6. Calculation of balcony area is measured as the area bounded by the centre line of demising or partition walls separating one unit from another unit, the outmost face of the enclosing guard and the external face of the adjoining balcony. 7. The units are measured at typical floor in the building. Columns may vary in size depending on the floor level. 8. For each unit type, unit sizes and details might be slightly different. Please refer to the sales and purchase agreement for the actual size of each specific unit.

2 Bedroom - Type 3

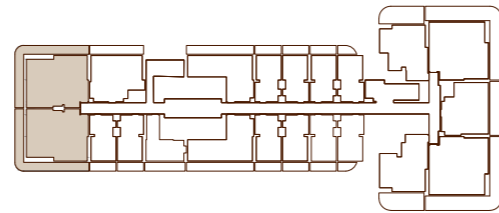
UNIT FLOOR PLAN



AREA	SQ. M	SQ. FT
SUITE AREA	81.91 m ²	881.67 ft ²
BALCONY AREA	42.88 m ²	461.56 ft ²
TOTAL UNIT AREA	124.79 m ²	1343.23 ft ²

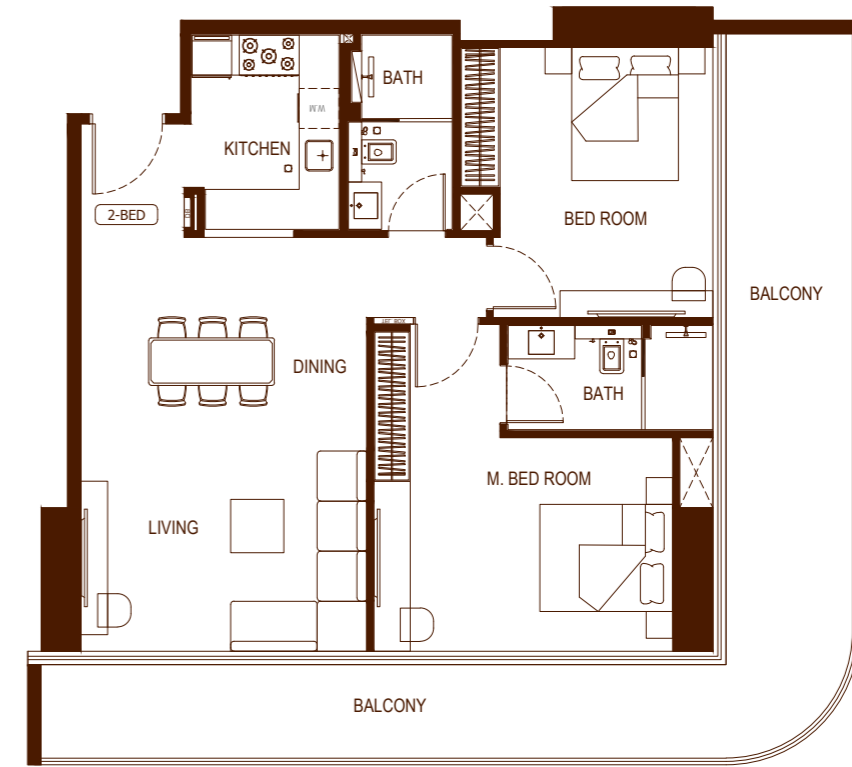
FLAT DESIGN COMPONENTS

M.BATH	4 m ²
M.BEDROOM	17 m ²
BATH	4 m ²
KITCHEN	7 m ²
CORRIDOR	5 m ²
BEDROOM	16 m ²
LIVING & DINING	20 m ²



2 Bedroom - Type 4

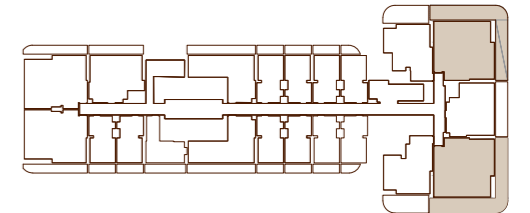
UNIT FLOOR PLAN



AREA	SQ. M	SQ. FT
SUITE AREA	87.34 m ²	940.12 ft ²
BALCONY AREA	38.60 m ²	415.49 ft ²
TOTAL UNIT AREA	125.94 m ²	1355.61 ft ²

FLAT DESIGN COMPONENTS

M.BATH	5 m ²
M.BEDROOM	18 m ²
BATH	5 m ²
KITCHEN	7 m ²
CORRIDOR	5 m ²
BEDROOM	14 m ²
LIVING & DINING	27 m ²







بن غاطي
BINGHATTI