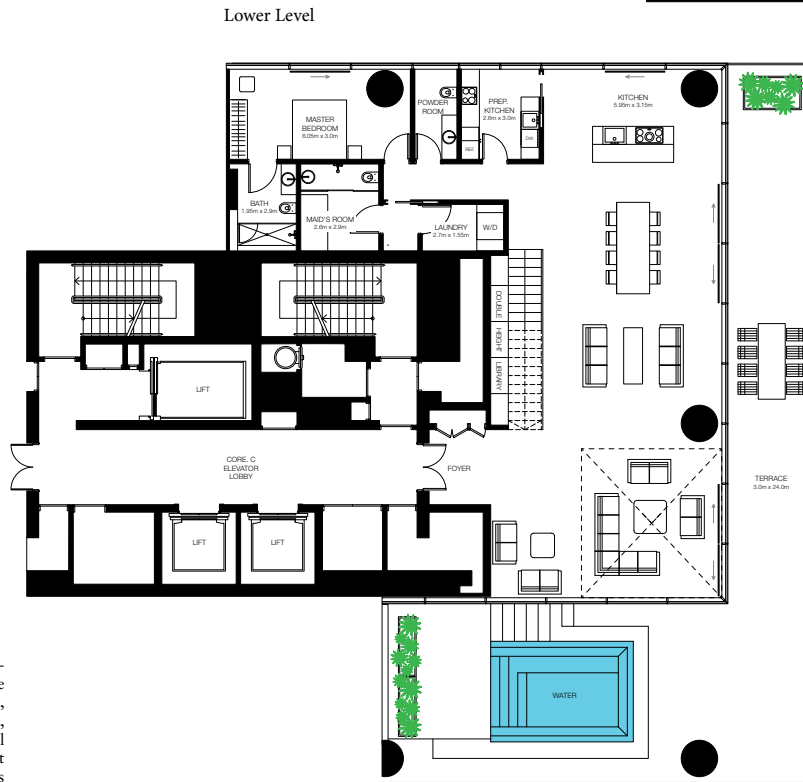
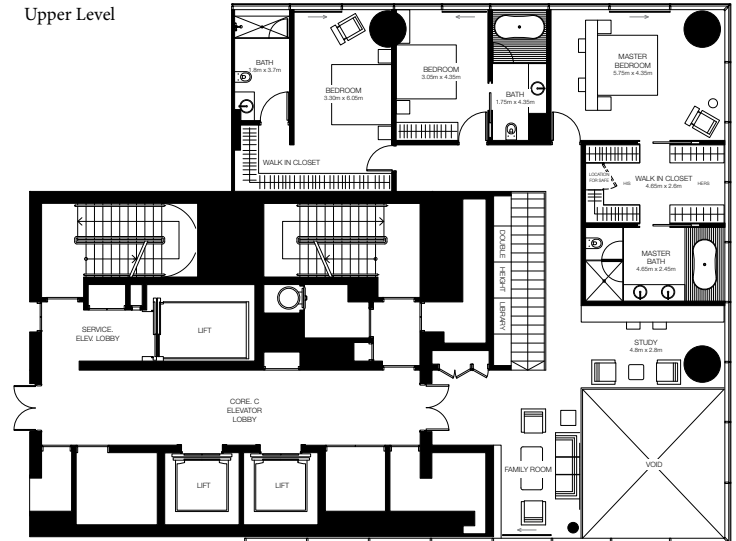
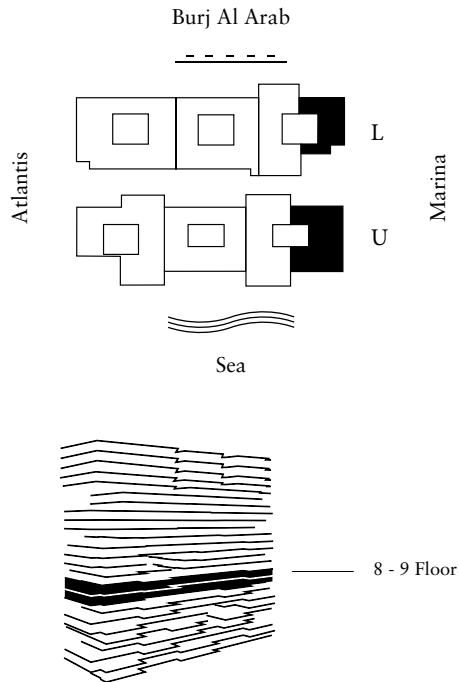


4-Bedroom Duplex

Unit 805 - 8th / 9th Floor

4 Bedrooms - 4.5 Bathrooms - 3 Parking Spaces

Residences	4,716 sq. ft.	438 sq. mt.
Terrace	2,027 sq. ft.	188 sq. mt.
Total	6,744 sq. ft.	626 sq. mt.



The layout representations and interior and exterior decorations in this document are provided for illustrative purposes only and are subject to change without notice. All internal and external areas of the units are sold unfurnished, unless agreed otherwise in writing, and any references to kitchens, studies, offices, gyms, spas, water features, pools, deck and terraced areas, dining areas, galleries, safes, safe cabins, closets, lifts, furnishings, plants and all forms of landscaping within this document are for illustrative purposes only. All square footages and dimensions are approximate only and may be subject to change at any time without notice. The square footage indicated herein may exceed the usable floor area. The placement, specifications and details of any appliances, fittings and white goods within the units are subject to the terms of the sale and purchase agreement and subject to change without notice. Omniyat reserves the right to make any changes to the content of this document at any time without notice. Any reference to Omniyat is a reference to Luxury Developments L.L.C. and/or the Omniyat group of companies, as the context requires.

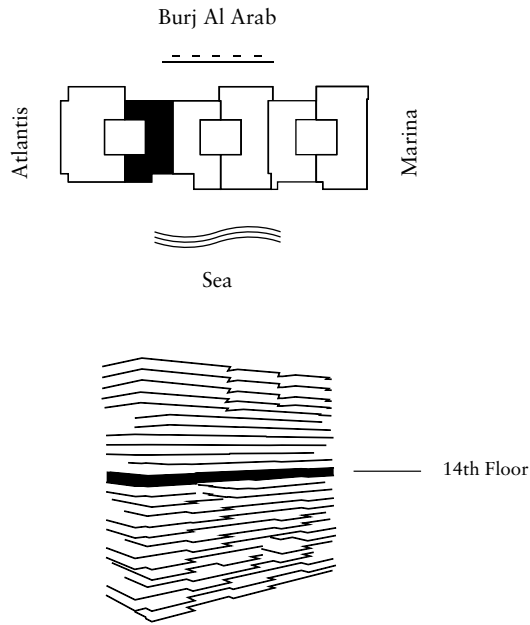


3-Bedroom Residence

Unit 1402 - 14th Floor

3 Bedrooms - 3.5 Bathrooms - 2 Parking Spaces

Residences	3,246 sq. ft.	301 sq. mt.
Terrace	260 sq. ft.	24 sq. mt.
Total	3,506 sq. ft.	325 sq. mt.



The layout representations and interior and exterior decorations in this document are provided for illustrative purposes only and are subject to change without notice. All internal and external areas of the units are sold unfurnished, unless agreed otherwise in writing, and any references to kitchens, studies, offices, gyms, spas, water features, pools, deck and terraced areas, dining areas, galleries, safes, safe cabins, closets, lifts, furnishings, plants and all forms of landscaping within this document are for illustrative purposes only. All square footages and dimensions are approximate only and may be subject to change at any time without notice. The square footage indicated herein may exceed the usable floor area. The placement, specifications and details of any appliances, fittings and white goods within the units are subject to the terms of the sale and purchase agreement and subject to change without notice. Omniyat reserves the right to make any changes to the content of this document at any time without notice. Any reference to Omniyat is a reference to Luxury Developments L.L.C. and/or the Omniyat group of companies, as the context requires.