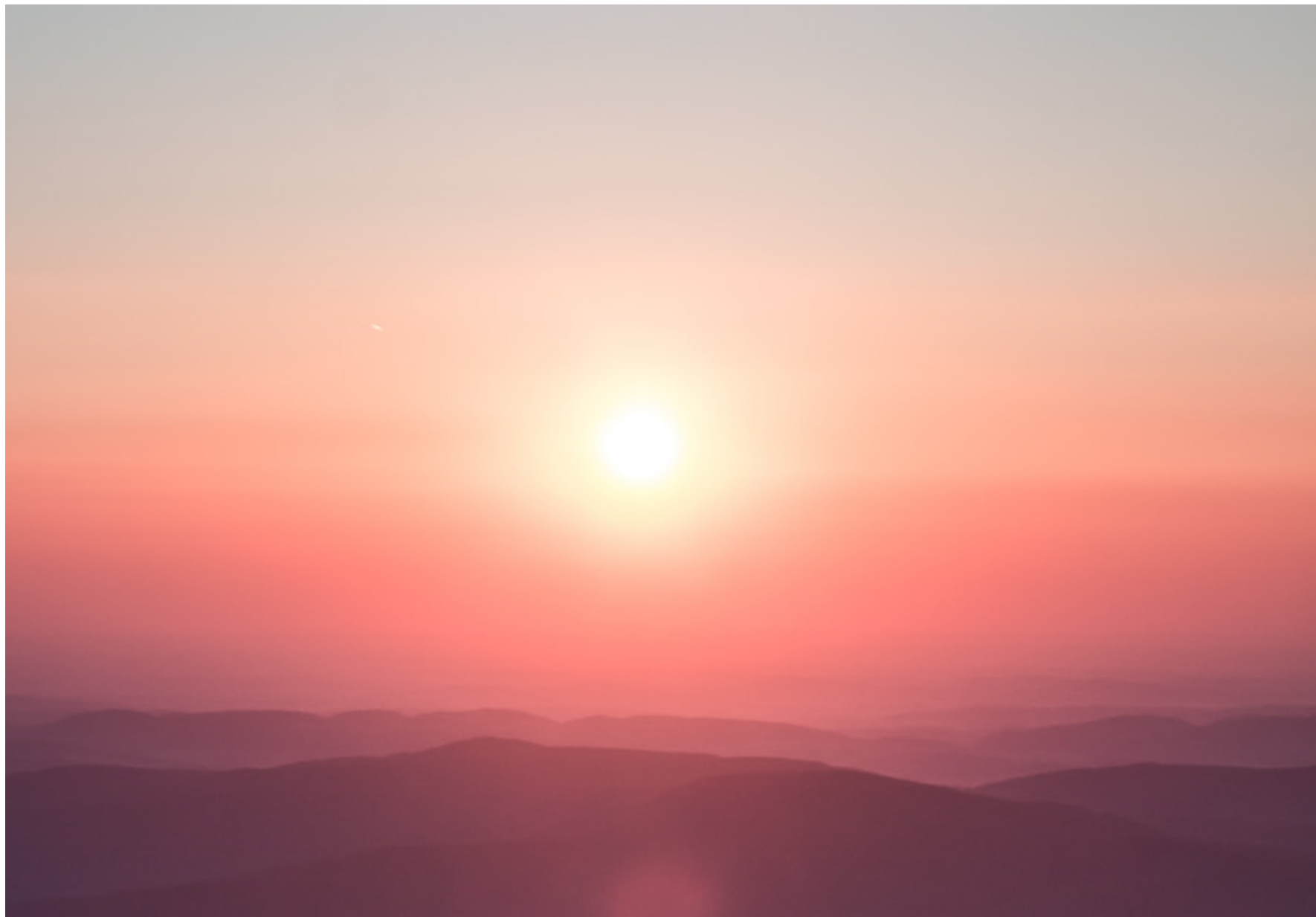


Raya
JEBEL SIFAH



—
CELEBRATE
SERENITY
—



CONTENTS

Overview

Jebel Sifah

Life at Raya

Specifications

Amenities

The Villas

Floor Plans

Life in Oman

The Developer



NATURE'S TRIBUTE TO YOU.

Basking in the sun, swiveling in the fresh mountain breeze, yearns a desire for a lush life. Your pursuit of a fulfilling life doesn't just involve its luxuries, but open skies and nature's warmth.

Here's to a life worth living well, a tribute to the sun's nurturing rays and the beauty of rolling greens. Here's to Raya at Jebel Sifah, where nature embraces you throughout.



JEBEL SIFAH

MUSCAT'S OASIS OF WONDER.

Situated on the northern coast of Oman, Jebel Sifah is less than an hour away from the vibrant city of Muscat. Developed by Muriya, it is nestled amidst almost 6 km of coastline and the majestic Al Hajar Mountains.



With a Harradine-designed golf course, a modern marina, hotel, restaurants, and an incredible choice of freehold residential properties, Jebel Sifah offers peace of mind and a serene living experience unlike anywhere else.

EMBRACE THE LIGHT OF LIFE.

Raya is a tribute to the nurturing rays of the sun. Every day is a celebration of sunny mornings, wholesome delights, and a serene lifestyle. Here's to a life amidst blissful coastlines and majestic hills.

Wake up to astonishing views of the mountains, breeze through the day in a lifestyle that suits you best, and unwind to nature's embrace into the night. When Raya is your home, every moment is a warm memory.





Raya
JEBEL SIFAH



RAYA AT JEBEL SIFAH

A collection of villas amidst the serenity of Jebel Sifah, just 35 minutes from Muscat City Centre

LOCATION:

Jebel Sifah, Muscat | Oman

MAJLIS VILLAS:

2 and 3-bedroom homes crafted to be contemporarily Arabian.

WELLNESS VILLAS:

2 and 3-bedroom homes fusing holistic ambiance and calming aesthetics.

HOME OWNERSHIP PLAN:

3 Years

THE
AMENITIES





SLOW DOWN,
BREATHE IN,
AND **EMBRACE**
NATURE.

Being at one with nature fosters peace of mind, body, and soul. From the breeze of the birds to the rustling leaves, embrace the life you fancy at Raya.

There's so much to do in the enclaves, or there's always a chance to step out for a quick putting session at the golf course. For friends, family, and frolic, find your share of fun.

Here, the amenities are for everyone. Let the Sultanate's rich heritage fuse with well-being and nature. Raya offers more than just a home – a complete living experience.



THE AMENITIES

- Secluded Private Gardens
- Versatile Multi-purpose Exercise Zones
- Spectacular Golf Course & Park Views
- Shaded Yoga Retreat
- Covered BBQ Pavilions
- Scenic Walking and Cycling Trail
- Fitness Pavilions
- Private Wellness Sanctuary
- Reserved Private Parking Spaces

THE
VILLAS





MAJLIS VILLAS

CRAFTED AND CONTEMPORARILY ARABIAN.

For the little moments that become core memories, of momentous occasions at the Majlis. The homes represent a seamless blend of craftsmanship and are authentically Omani.

In its timeless architecture, we preserve Oman's rich heritage and Jebel Sifah's vanity. Surround yourself with elegant interiors, thoughtful design, and an effortless fusion of personal and social life.



WELLNESS VILLAS

THE EASTERN AND WESTERN FUSION OF ZEN.

Imagine your home immersed in its unique aesthetic. Embrace the zen in the tranquil ambiance, surrounded by design elements that create a harmonious living space.

Natural elements, bright spaces, and clean aesthetics envelop your lifestyle at Wellness Villas, where wellness takes center stage. Your sanctuary of simplicity awaits in the mountains.

Discover your lifestyle - choose from Majlis or Wellness Studio

WELLNESS VILLAS

(2 Bed Villa)

Floorplan 1 – Maid Room + Wellness Studio

BUA: 157sqm **Plot Area:** 683 – 899 sqm

Floorplan 2 – Study Room + Wellness Studio

BUA: 157sqm **Plot Area:** 683 – 899 sqm

(3 Bed Villa)

Floorplan 1 – Maid Room + Wellness Studio

BUA: 183sqm **Plot Area:** 719 – 918 sqm

Floorplan 2 – Study Room + Wellness Studio

BUA: 183sqm **Plot Area:** 719 – 918 sqm

MAJLIS VILLAS

(2 Bed Villa)

Floorplan 1 – Maid Room + Majlis

BUA: 157sqm **Plot Area:** 683 – 899 sqm

Floorplan 2 – Study Room + Majlis

BUA: 157sqm **Plot Area:** 683 – 899 sqm

(3 Bed Villa)

Floorplan 1 – Maid Room + Majlis

BUA: 183sqm **Plot Area:** 719 – 918 sqm

Floorplan 2 – Study Room + Majlis

BUA: 183sqm **Plot Area:** 719 – 918 sqm

















FLOOR
PLANS

WELLNESS VILLAS

(2 BED VILLA)

Floorplan 1
Maid Room + Wellness Studio

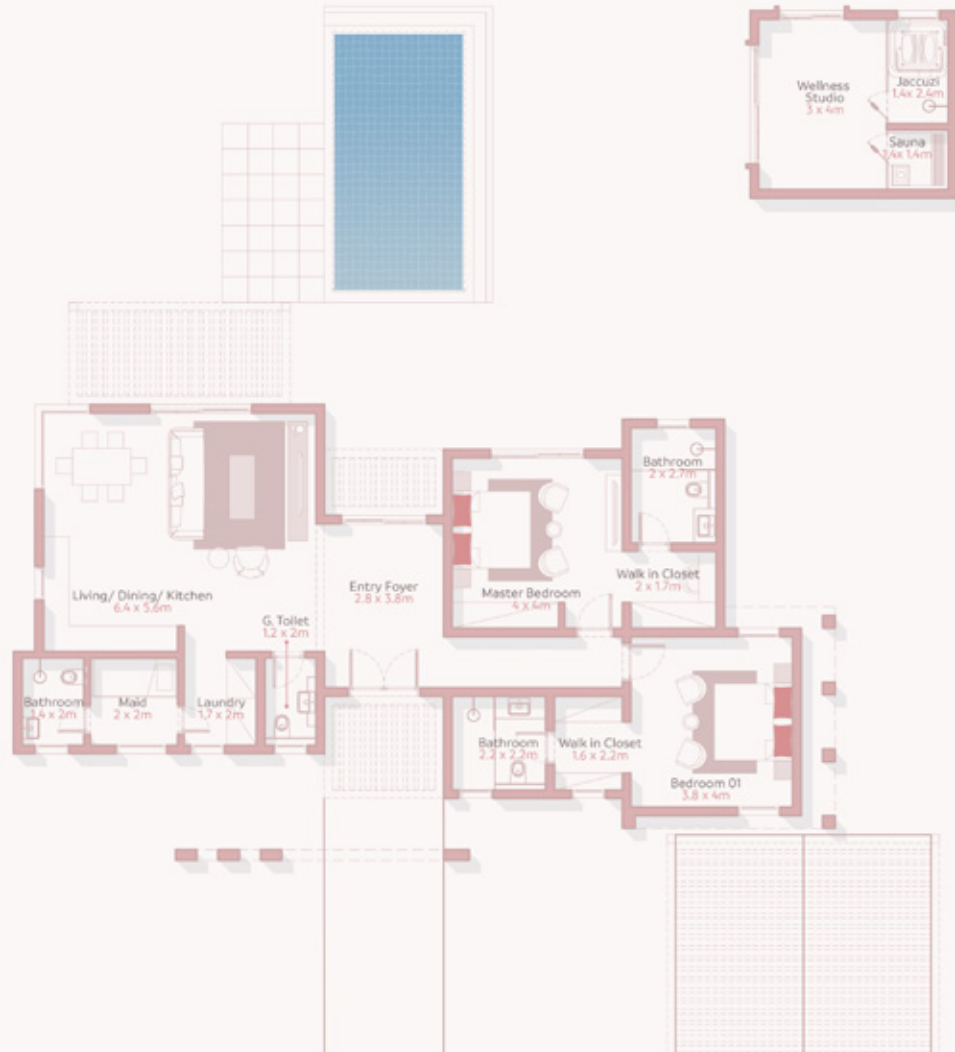
PLOT SIZE

Plot Area from 683 – 899 sqm

BUILT UP AREA

Build-up Area from 157 sqm

Disclaimer: All information and drawings used in this brochure and its annexes are for illustrative purposes only. The developer reserves the right to make revisions and changes to all drawings, features, and images and in relation to materials, amenities, and dimensions mentioned in this Brochure. Actual areas may vary from the stated areas, and unit direction may vary from unit to unit. All areas are based on gross external areas. Locations and dimensions for the pool and pool deck vary according to land dimensions if applicable. The inclusion of the swimming pool may incur an extra charge.



WELLNESS VILLA

(2 BED VILLA)

Floorplan 2
Study Room + Wellness Studio

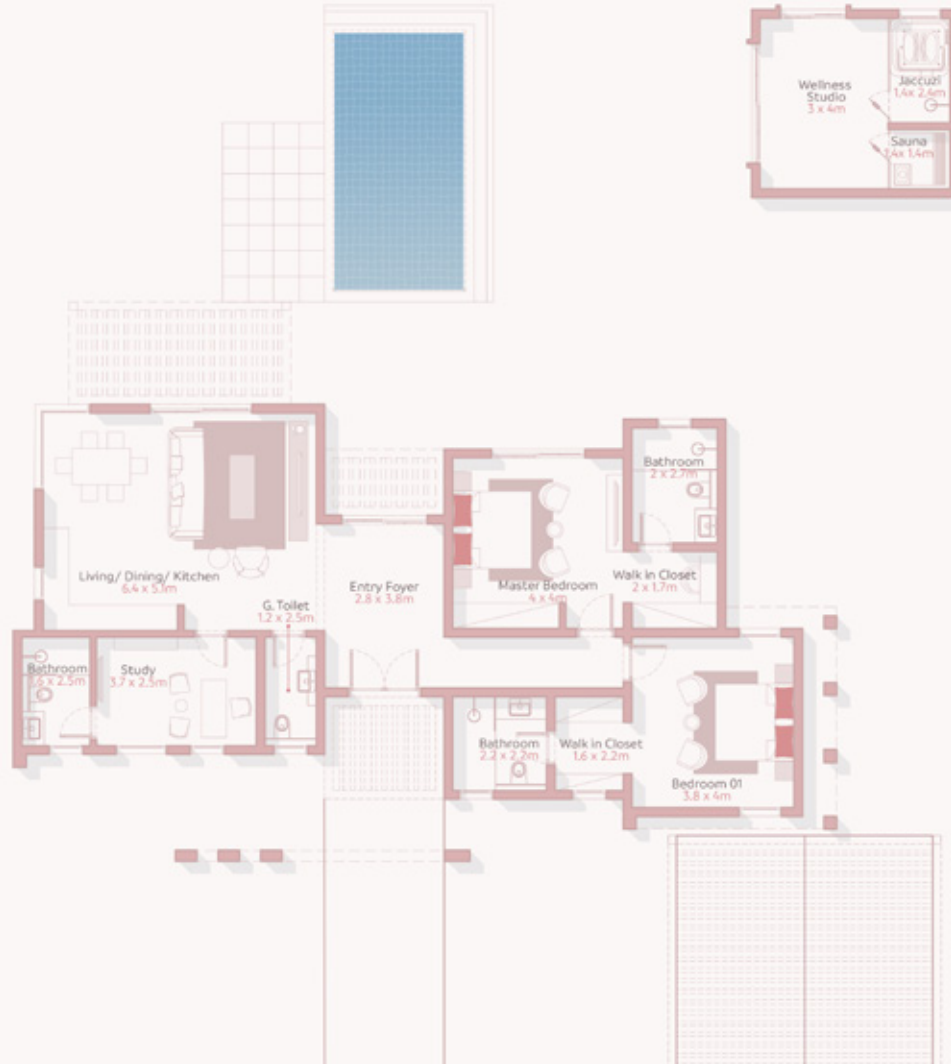
PLOT SIZE

Plot Area from 683 – 899 sqm

BUILT UP AREA

Build-up Area from 157 sqm

Disclaimer: All information and drawings used in this brochure and its annexes are for illustrative purposes only. The developer reserves the right to make revisions and changes to all drawings, features, and images and in relation to materials, amenities, and dimensions mentioned in this Brochure. Actual areas may vary from the stated areas, and unit direction may vary from unit to unit. All areas are based on gross external areas. Locations and dimensions for the pool and pool deck vary according to land dimensions if applicable. The inclusion of the swimming pool may incur an extra charge.



WELLNESS VILLAS

(3 BED VILLA)

Floorplan 1
Maid Room + Wellness Studio

PLOT SIZE

Plot Area from 719 – 918 sqm

BUILT UP AREA

Build-up Area from 183 sqm

Disclaimer: All information and drawings used in this brochure and its annexes are for illustrative purposes only. The developer reserves the right to make revisions and changes to all drawings, features, and images and in relation to materials, amenities, and dimensions mentioned in this Brochure. Actual areas may vary from the stated areas, and unit direction may vary from unit to unit. All areas are based on gross external areas. Locations and dimensions for the pool and pool deck vary according to land dimensions if applicable. The inclusion of the swimming pool may incur an extra charge.



WELLNESS VILLAS

(3 BED VILLA)

Floorplan 2
Study Room + Wellness Studio

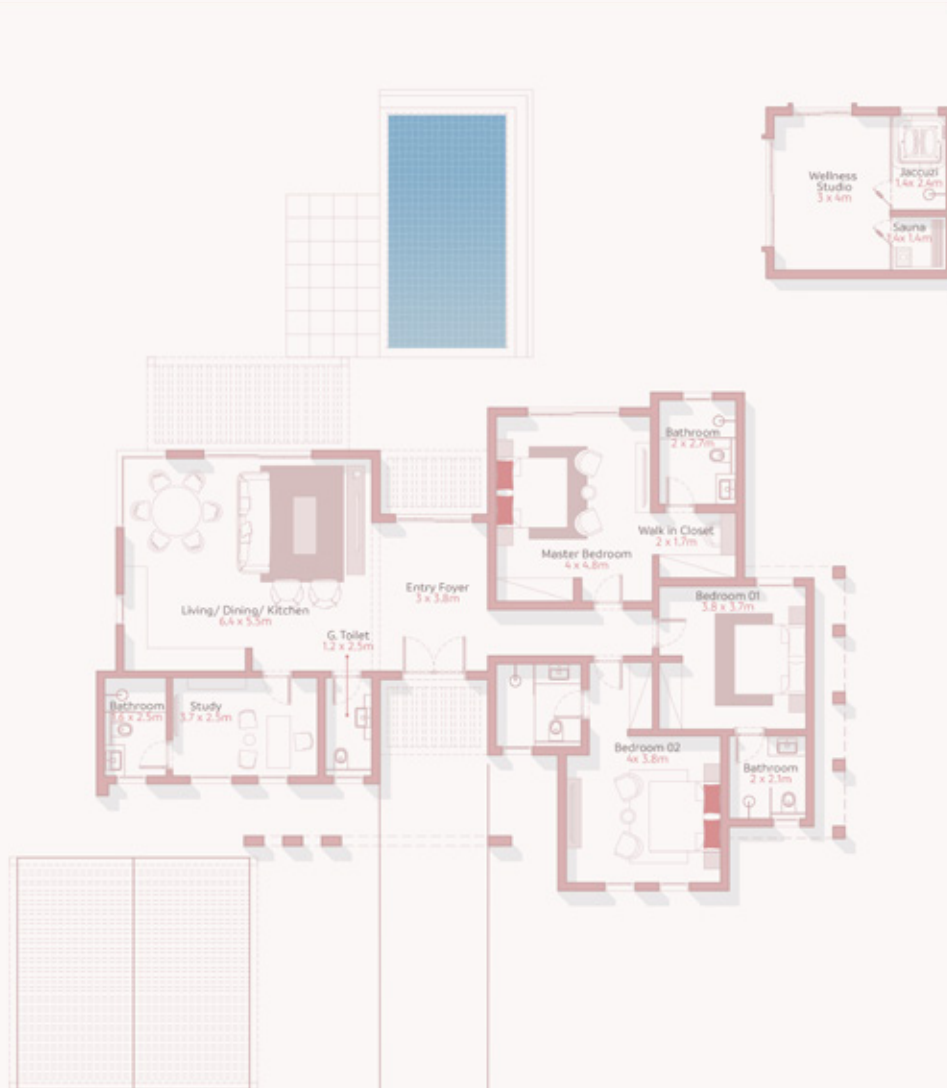
PLOT SIZE

Plot Area from 719 – 918 sqm

BUILT UP AREA

Build-up Area from 183 sqm

Disclaimer: All information and drawings used in this brochure and its annexes are for illustrative purposes only. The developer reserves the right to make revisions and changes to all drawings, features, and images and in relation to materials, amenities, and dimensions mentioned in this Brochure. Actual areas may vary from the stated areas, and unit direction may vary from unit to unit. All areas are based on gross external areas. Locations and dimensions for the pool and pool deck vary according to land dimensions if applicable. The inclusion of the swimming pool may incur an extra charge.



MAJLIS VILLAS

(2 BED VILLA)

Floorplan 1
Maid Room + Majlis

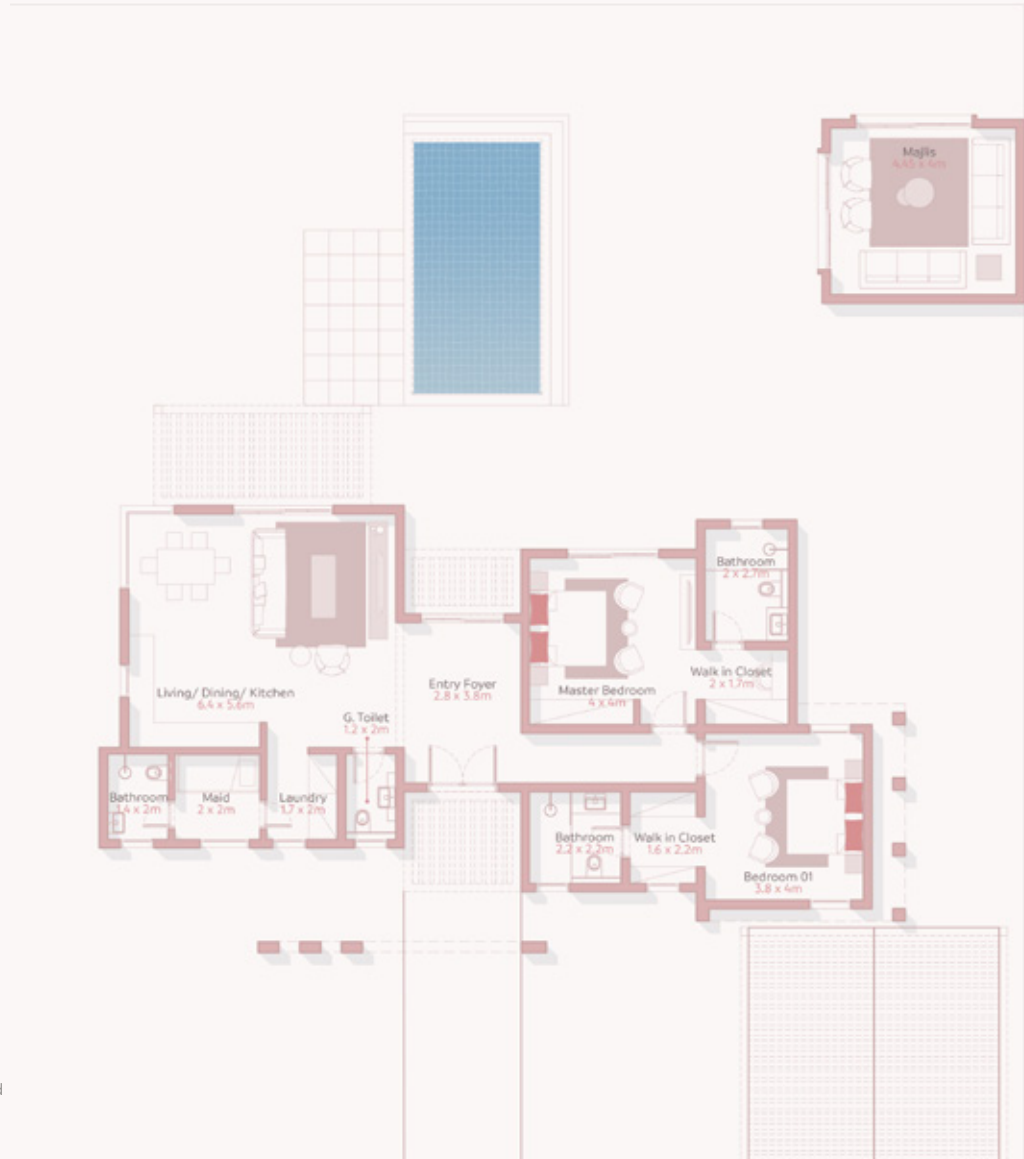
PLOT SIZE

Plot Area from 683 – 899 sqm

BUILT UP AREA

Build-up Area from 157 sqm

Disclaimer: All information and drawings used in this brochure and its annexes are for illustrative purposes only. The developer reserves the right to make revisions and changes to all drawings, features, and images and in relation to materials, amenities, and dimensions mentioned in this Brochure. Actual areas may vary from the stated areas, and unit direction may vary from unit to unit. All areas are based on gross external areas. Locations and dimensions for the pool and pool deck vary according to land dimensions if applicable. The inclusion of the swimming pool may incur an extra charge.



MAJLIS VILLAS

(2 BED VILLA)

Floorplan 2
Study Room + Majlis

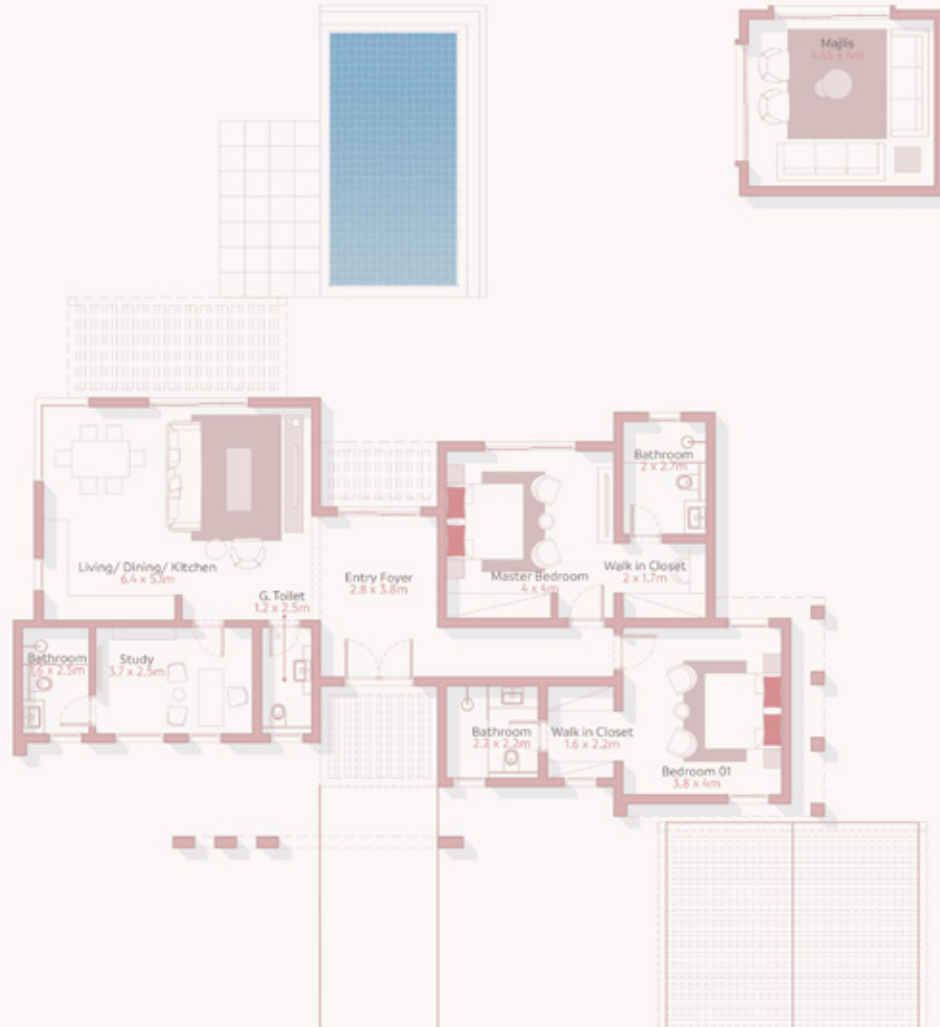
PLOT SIZE

Plot Area from 683 – 899 sqm

BUILT UP AREA

Build-up Area from 157 sqm

Disclaimer: All information and drawings used in this brochure and its annexes are for illustrative purposes only. The developer reserves the right to make revisions and changes to all drawings, features, and images and in relation to materials, amenities, and dimensions mentioned in this Brochure. Actual areas may vary from the stated areas, and unit direction may vary from unit to unit. All areas are based on gross external areas. Locations and dimensions for the pool and pool deck vary according to land dimensions if applicable. The inclusion of the swimming pool may incur an extra charge.



MAJLIS VILLAS

(3 BED VILLA)

Floorplan 1

Maid Room + Majlis

PLOT SIZE

Plot Area from 719 – 918 sqm

BUILT UP AREA

Build-up Area from 183 sqm

Disclaimer: All information and drawings used in this brochure and its annexes are for illustrative purposes only. The developer reserves the right to make revisions and changes to all drawings, features, and images and in relation to materials, amenities, and dimensions mentioned in this Brochure. Actual areas may vary from the stated areas, and unit direction may vary from unit to unit. All areas are based on gross external areas. Locations and dimensions for the pool and pool deck vary according to land dimensions if applicable. The inclusion of the swimming pool may incur an extra charge.



MAJLIS VILLAS

(3 BED VILLA)

Floorplan 2

Study Room + Majlis

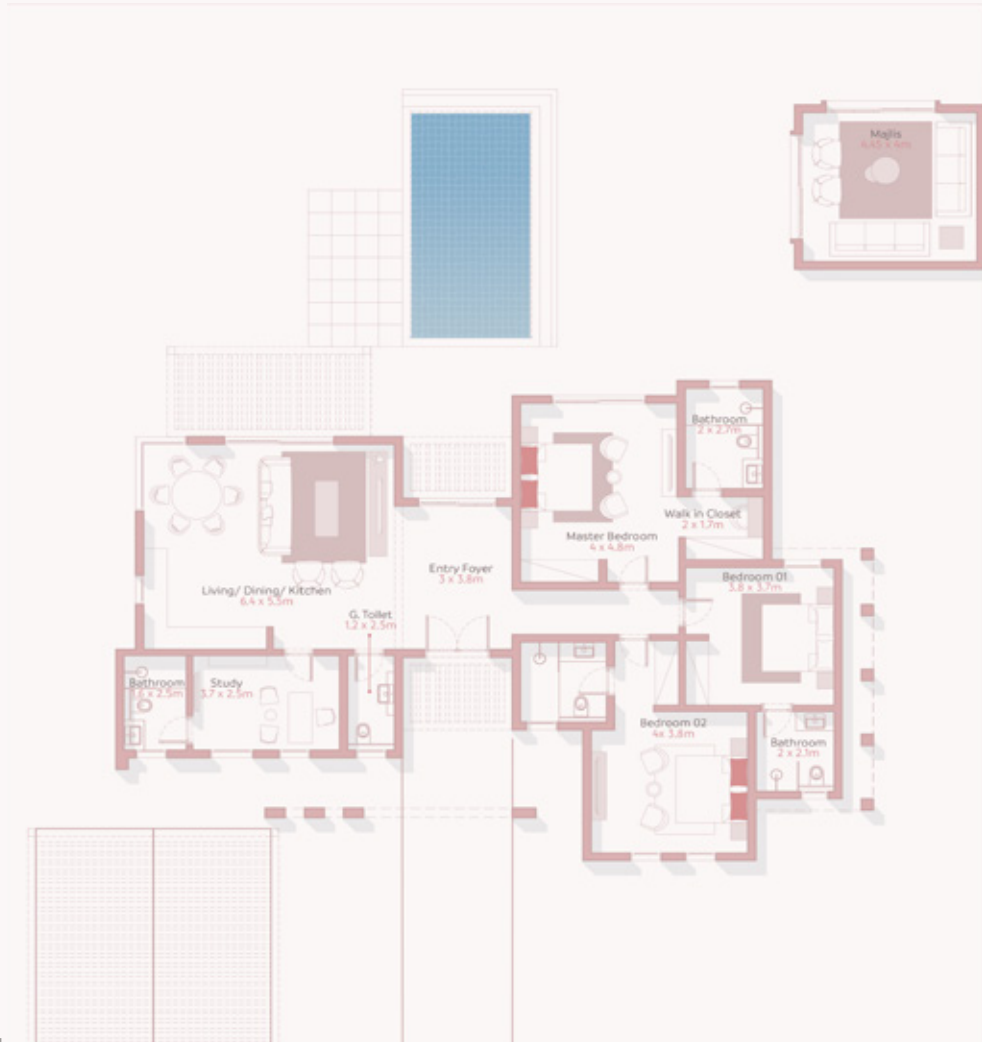
PLOT SIZE

Plot Area from 719 – 918 sqm

BUILT UP AREA

Build-up Area from 183 sqm

Disclaimer: All information and drawings used in this brochure and its annexes are for illustrative purposes only. The developer reserves the right to make revisions and changes to all drawings, features, and images and in relation to materials, amenities, and dimensions mentioned in this Brochure. Actual areas may vary from the stated areas, and unit direction may vary from unit to unit. All areas are based on gross external areas. Locations and dimensions for the pool and pool deck vary according to land dimensions if applicable. The inclusion of the swimming pool may incur an extra charge.



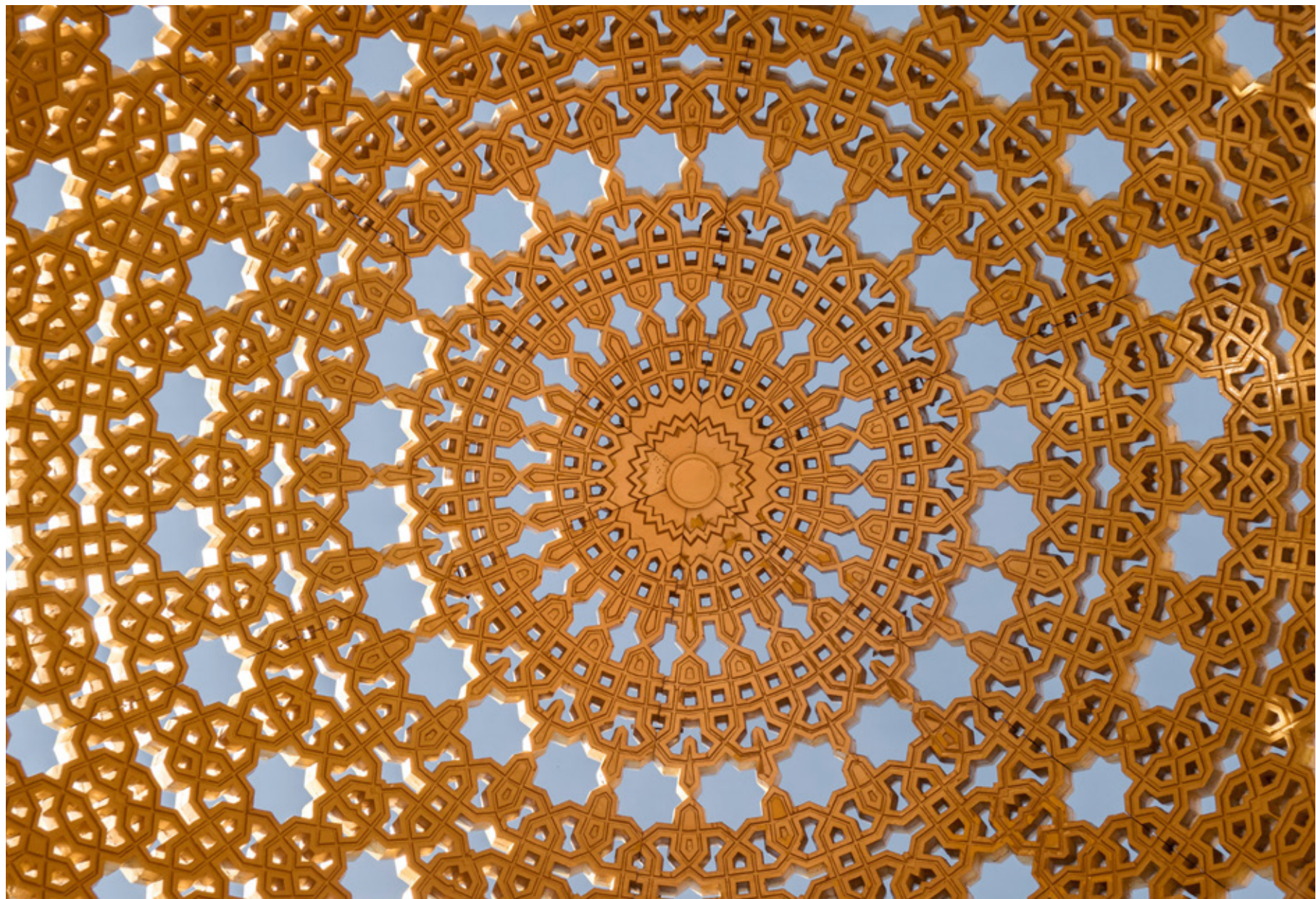




LIFE IN OMAN

OMAN; A TRIBUTE TO THE SPECTACULAR.

Beyond your valley of Raya, experience the richness of Omani culture. Where warm hospitality and diverse landscapes await. Raya seamlessly integrates with the Sultanate's lifestyle, creating a unique and enriching living experience.



LIFE IN OMAN

- A robust economy with **consistent growth opportunities**.
- The key **hub for trade and business** in the region.
- **Attractive incentives** for foreign and local investors.
- Ongoing projects enhancing **connectivity and accessibility**.
- Abundant resources supporting **diverse investment opportunities**.
- Stable governance fosters a **secure investment environment**.
- **Supportive policies** encouraging entrepreneurship and investment.
- **High living standards** attract professionals and investors alike.



MURIYA
مرييا



by ORASCOM
DEVELOPMENT

&



THE LARGEST REAL ESTATE DEVELOPER IN THE SULTANATE.

Muriya is one of Oman's largest and most diversified integrated real estate and tourism developers and a leading driver in establishing the Sultanate's tourism, real estate, and societal offerings.

For the past 15 years, we have developed large-scale destinations alive with thriving towns and communities, outstanding leisure, hospitality, and sports experiences in locations that bring significant inbound tourism and create unparalleled homes for our investors, partners, and homeowners.

RAYAJEBELSIFAH.COM

Raya
JEBEL SIFAH

MURIYA
موريا



by ORASCOM
DEVELOPMENT



MURIYA TOURISM DEVELOPMENT | BEACH ONE BLDG, SHATTI AL QURUM | P.O BOX 1719, P.C 130, MUSCAT | OMAN CR 1838806 | TEL 24646911 | FAX 24649073
س.ت: 1838806 | ص.ب 1719، رب 130مسقط، عُمان | شاطئ القرم | فاكس: +96824649073 | مبي بيتش ون | هاتف: +96824646911 | موريا للتنمية السياحية