



Redwood Avenue
at Jumeirah Golf Estates

COUNTRY DOWN-A



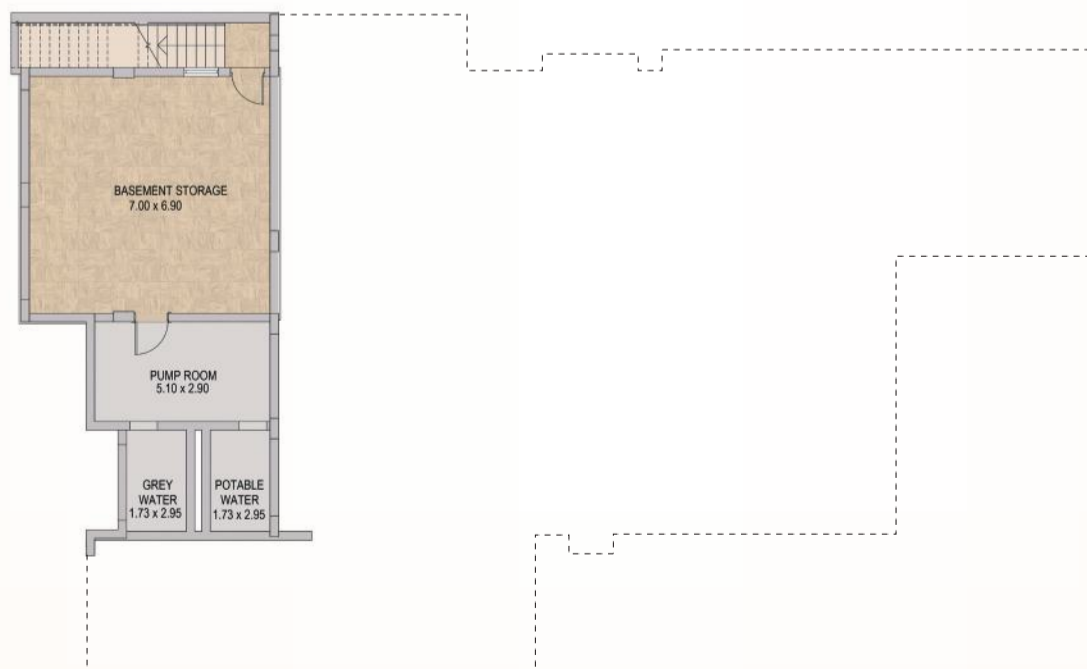
JUMEIRAH
GOLF ESTATES



GROUND FLOOR



FIRST FLOOR



BASEMENT FLOOR

Room dimensions are measured from internal wall to internal wall. Areas are measured from the exterior face of external walls and include all air-conditioned spaces, garages, fully enclosed balconies and covered terraces but exclude any open patios, terraces or balconies. All materials, dimensions and drawings are approximate. Information is subject to change notice. Drawings are not to scale and actual usable space may vary from stated floor plan. The developer reserves the right to make revisions to the floor plans.

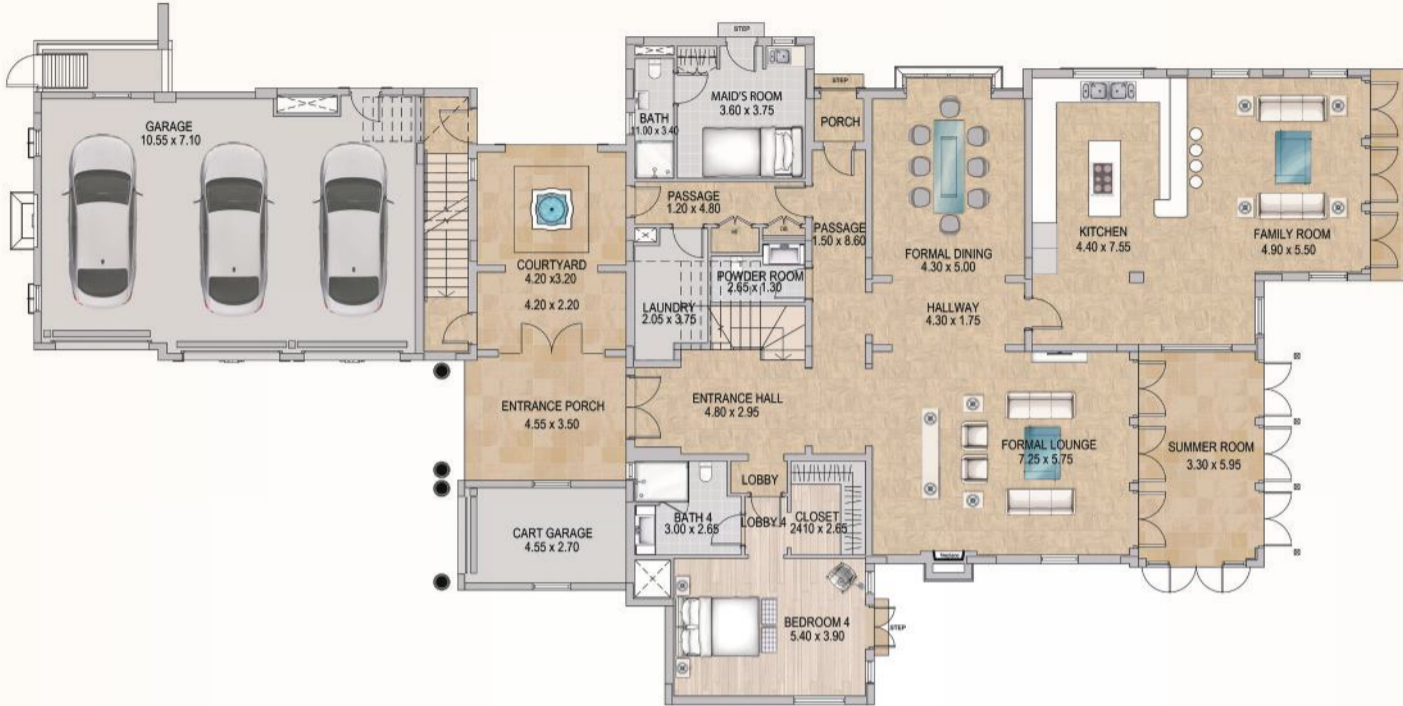


Redwood Avenue
at Jumeirah Golf Estates

MELBOURNE-B1



JUMEIRAH
GOLF ESTATES



GROUND FLOOR



FIRST FLOOR



BASEMENT FLOOR

Room dimensions are measured from internal wall to internal wall. Areas are measured from the exterior face of external walls and include all air-conditioned spaces, garages, fully enclosed balconies and covered terraces but exclude any open patios, terraces or balconies. All materials, dimensions and drawings are approximate. Information is subject to change notice. Drawings are not to scale and actual usable space may vary from stated floor plan. The developer reserves the right to make revisions to the floor plans.

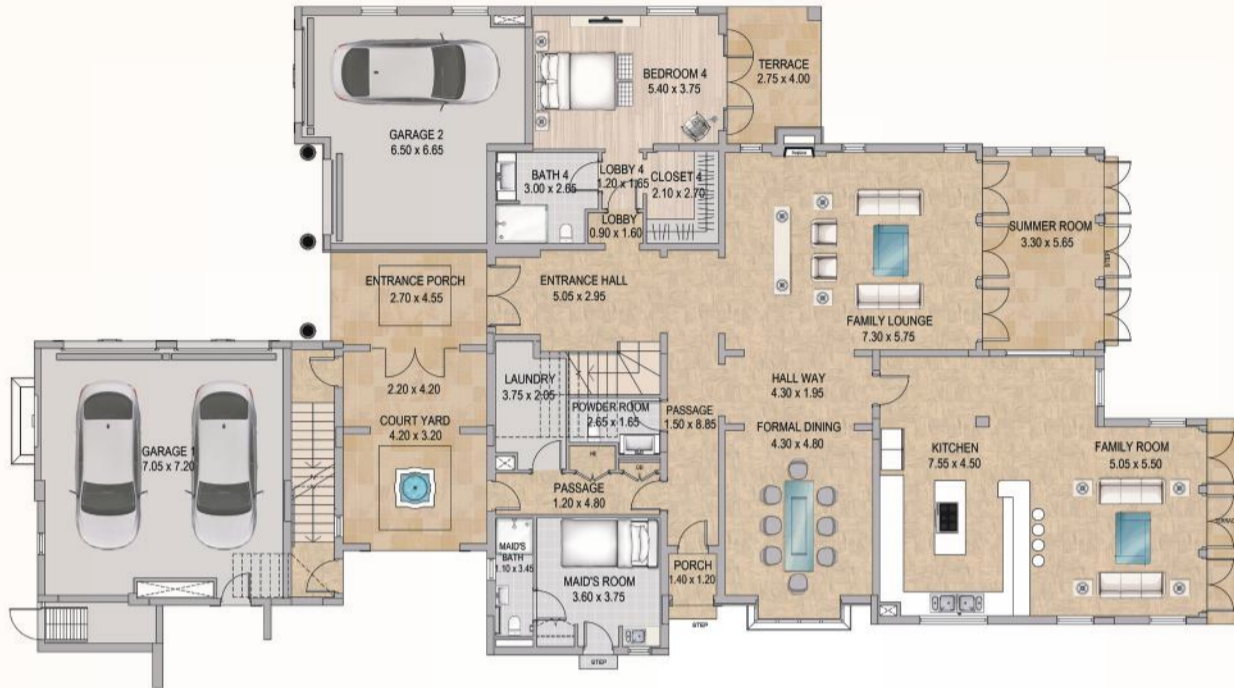


Redwood Avenue
at Jumeirah Golf Estates

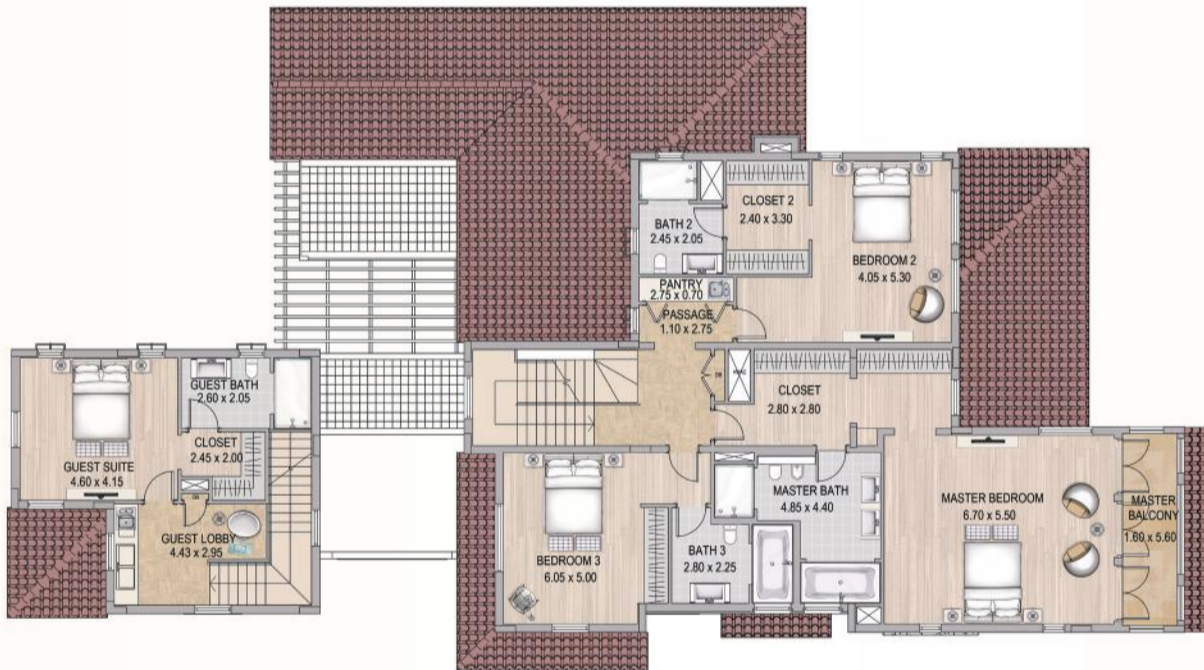
TROON-B2



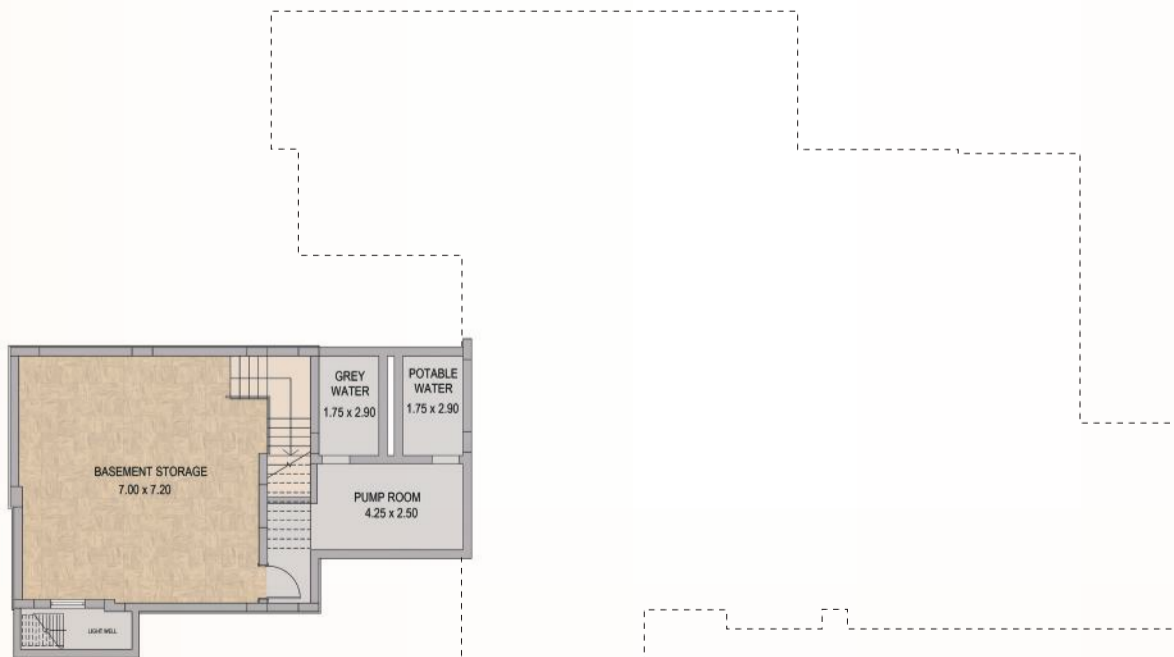
JUMEIRAH
GOLF ESTATES



GROUND FLOOR



FIRST FLOOR



BASEMENT FLOOR

Room dimensions are measured from internal wall to internal wall. Areas are measured from the exterior face of external walls and include all air-conditioned spaces, garages, fully enclosed balconies and covered terraces but exclude any open patios, terraces or balconies. All materials, dimensions and drawings are approximate. Information is subject to change notice. Drawings are not to scale and actual usable space may vary from stated floor plan. The developer reserves the right to make revisions to the floor plans.

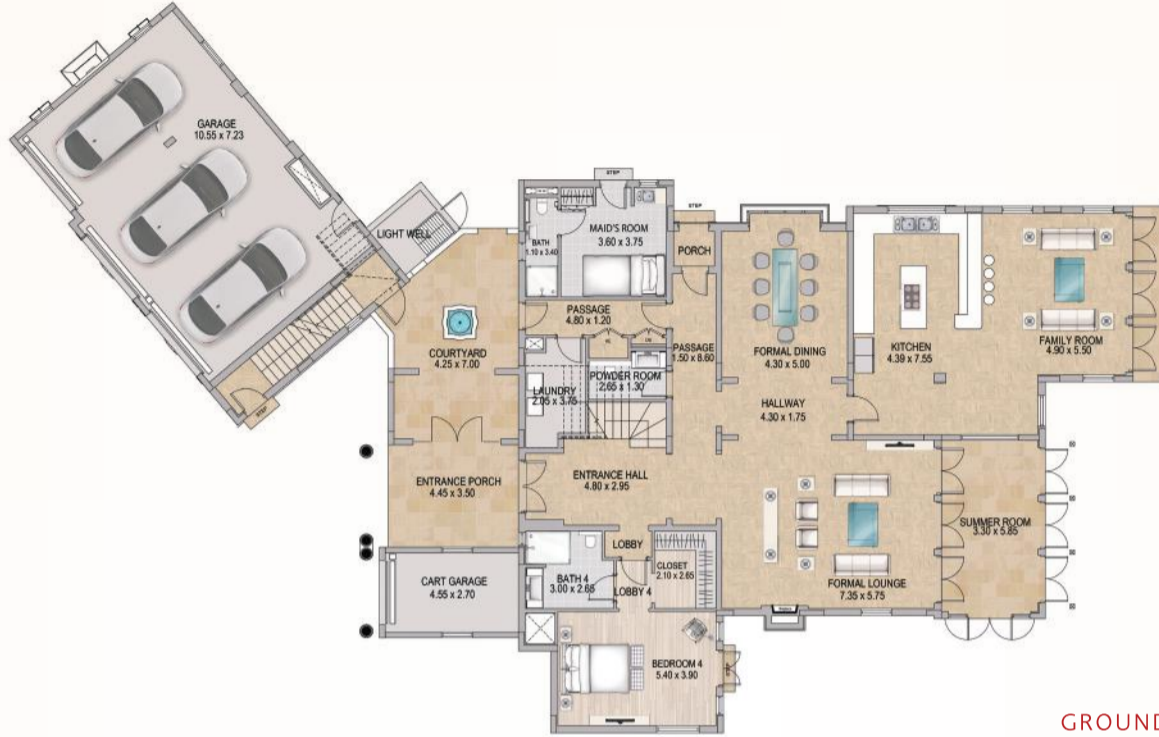


Redwood Avenue
at Jumeirah Golf Estates

MELBOURNE-B3



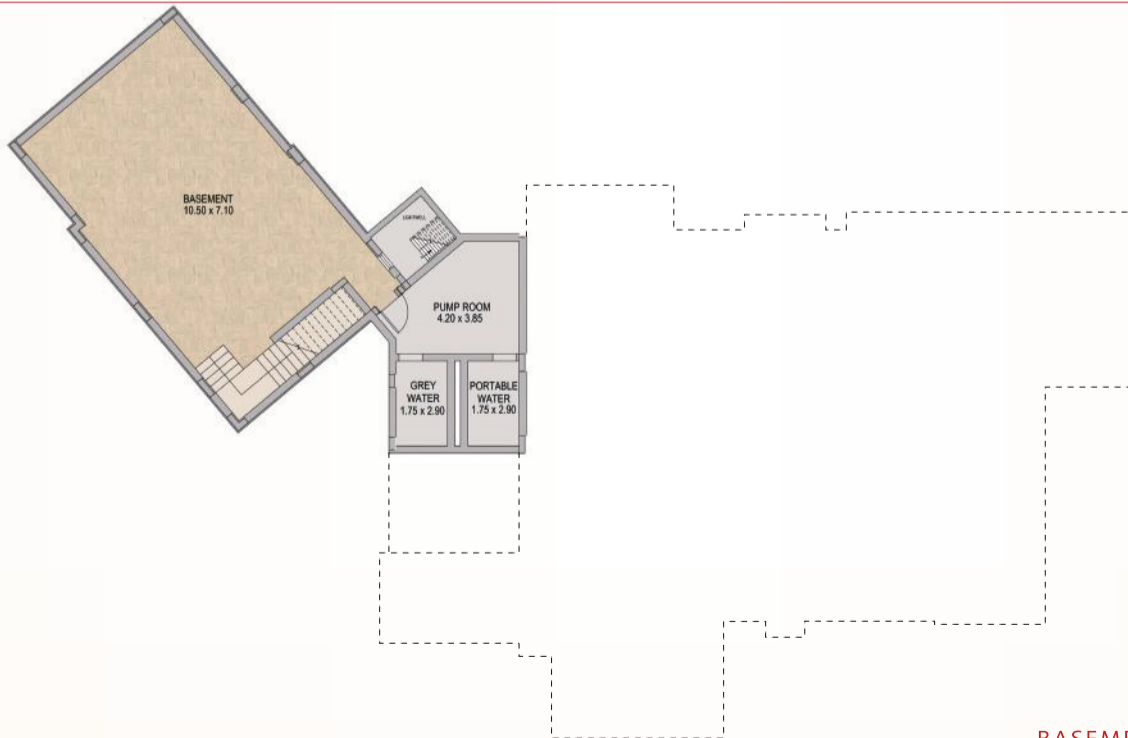
JUMEIRAH
GOLF ESTATES



GROUND FLOOR



FIRST FLOOR



BASEMENT FLOOR

Room dimensions are measured from internal wall to internal wall. Areas are measured from the exterior face of external walls and include all air-conditioned spaces, garages, fully enclosed balconies and covered terraces but exclude any open patios, terraces or balconies. All materials, dimensions and drawings are approximate. Information is subject to change notice. Drawings are not to scale and actual usable space may vary from stated floor plan. The developer reserves the right to make revisions to the floor plans.



Redwood Avenue
at Jumeirah Golf Estates

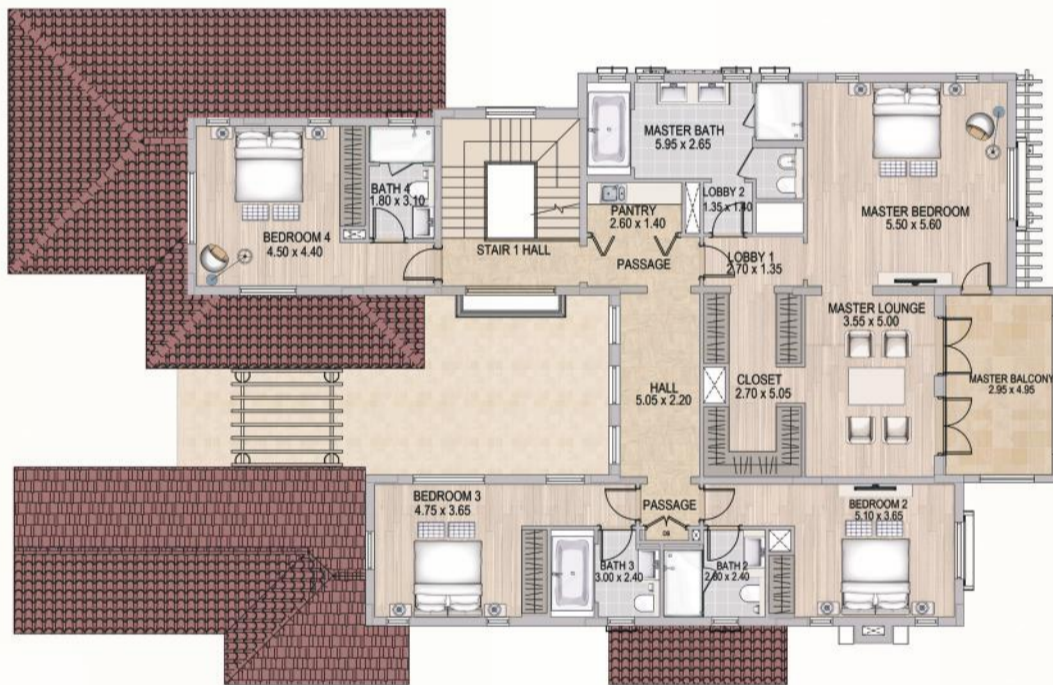
SYDNEY-C



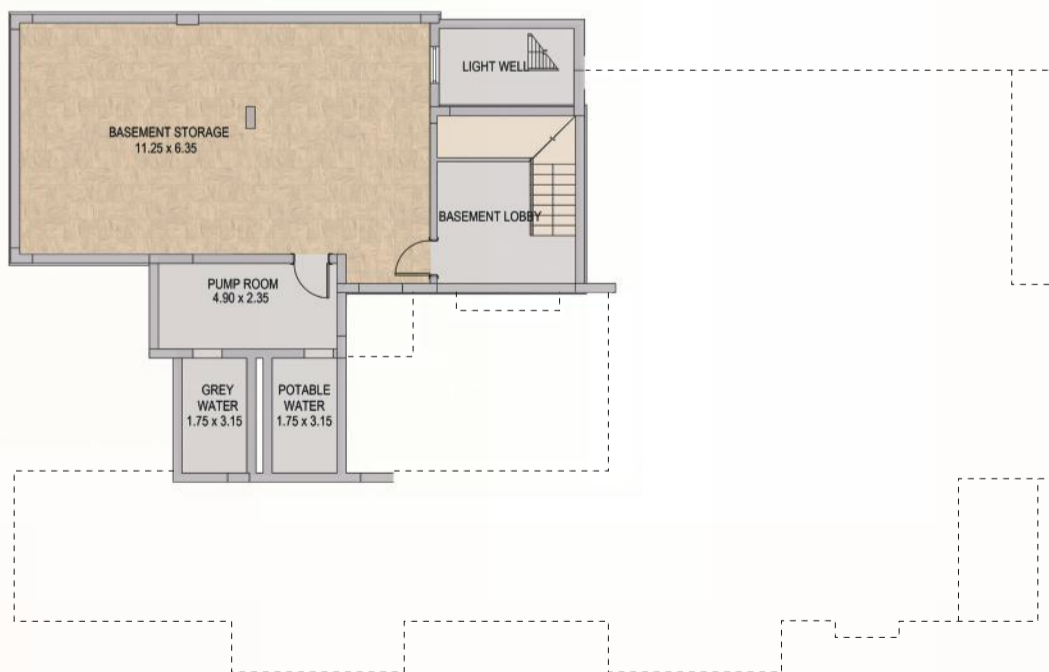
JUMEIRAH
GOLF ESTATES



GROUND FLOOR



FIRST FLOOR



BASEMENT FLOOR

Room dimensions are measured from internal wall to internal wall. Areas are measured from the exterior face of external walls and include all air-conditioned spaces, garages, fully enclosed balconies and covered terraces but exclude any open patios, terraces or balconies. All materials, dimensions and drawings are approximate. Information is subject to change notice. Drawings are not to scale and actual usable space may vary from stated floor plan. The developer reserves the right to make revisions to the floor plans.

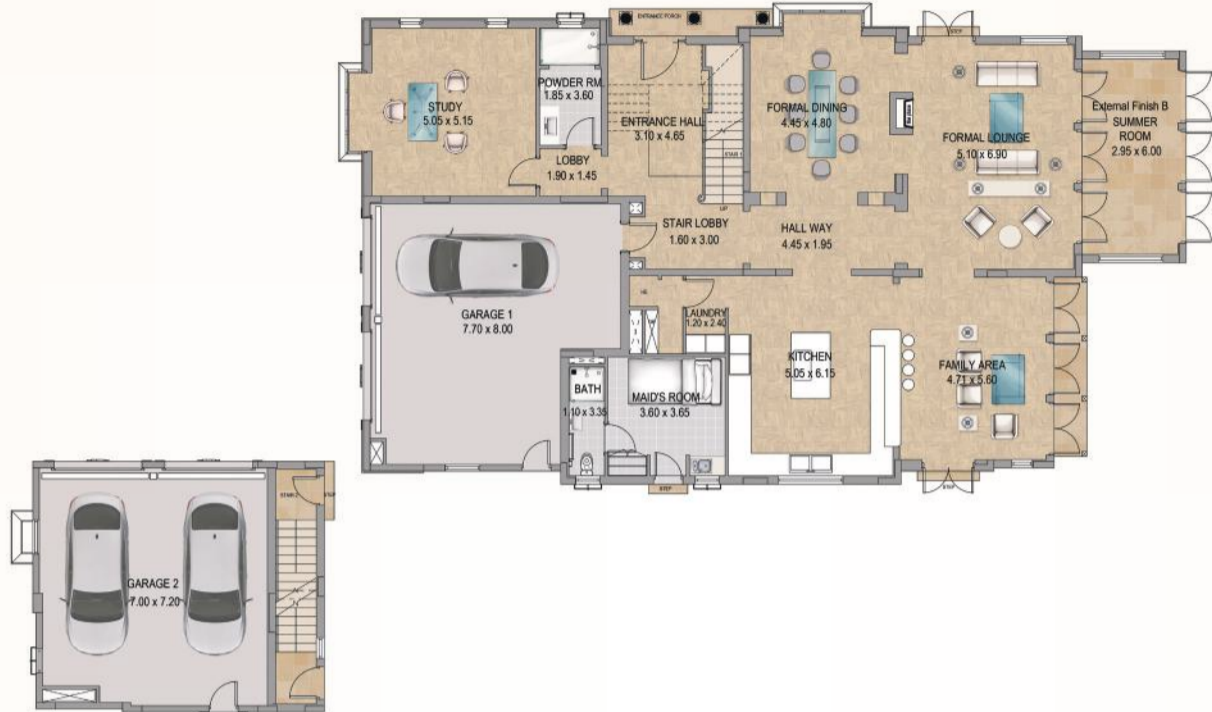


Redwood Avenue
at Jumeirah Golf Estates

JERSEY-D



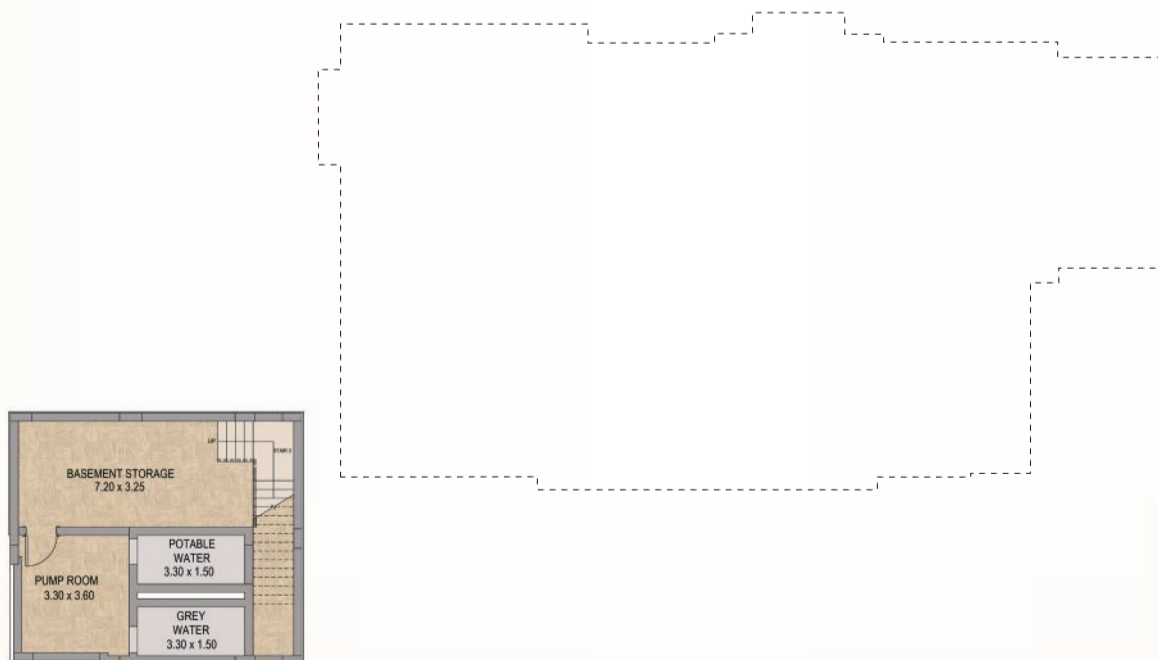
JUMEIRAH
GOLF ESTATES



GROUND FLOOR



FIRST FLOOR



BASEMENT FLOOR

Room dimensions are measured from internal wall to internal wall. Areas are measured from the exterior face of external walls and include all air-conditioned spaces, garages, fully enclosed balconies and covered terraces but exclude any open patios, terraces or balconies. All materials, dimensions and drawings are approximate. Information is subject to change notice. Drawings are not to scale and actual usable space may vary from stated floor plan. The developer reserves the right to make revisions to the floor plans.



Redwood Avenue
at Jumeirah Golf Estates

ONTARIO-E1



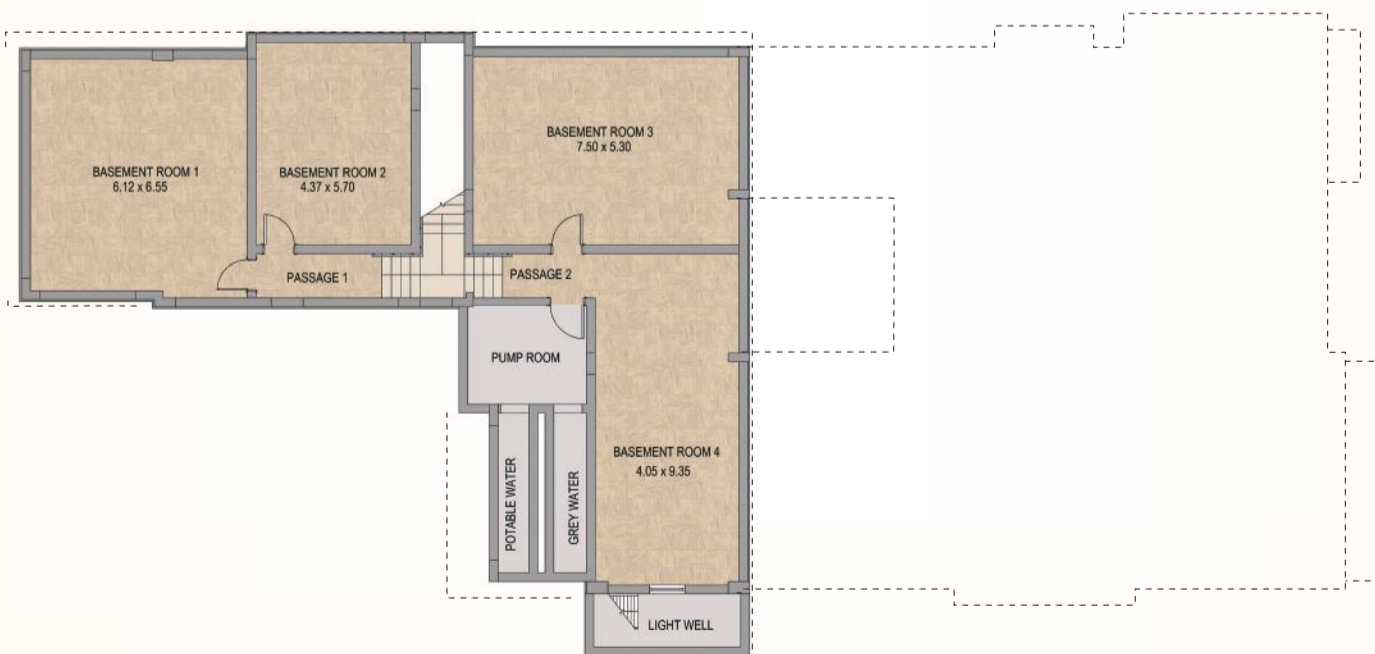
JUMEIRAH
GOLF ESTATES



GROUND FLOOR



FIRST FLOOR



BASEMENT FLOOR

Room dimensions are measured from internal wall to internal wall. Areas are measured from the exterior face of external walls and include all air-conditioned spaces, garages, fully enclosed balconies and covered terraces but exclude any open patios, terraces or balconies. All materials, dimensions and drawings are approximate. Information is subject to change notice. Drawings are not to scale and actual usable space may vary from stated floor plan. The developer reserves the right to make revisions to the floor plans.



Redwood Avenue
at Jumeirah Golf Estates

MOUGINS-E2



JUMEIRAH
GOLF ESTATES



GROUND FLOOR



FIRST FLOOR



BASEMENT FLOOR

Room dimensions are measured from internal wall to internal wall. Areas are measured from the exterior face of external walls and include all air-conditioned spaces, garages, fully enclosed balconies and covered terraces but exclude any open patios, terraces or balconies. All materials, dimensions and drawings are approximate. Information is subject to change notice. Drawings are not to scale and actual usable space may vary from stated floor plan. The developer reserves the right to make revisions to the floor plans.



Redwood Avenue
at Jumeirah Golf Estates

CAPE-E3



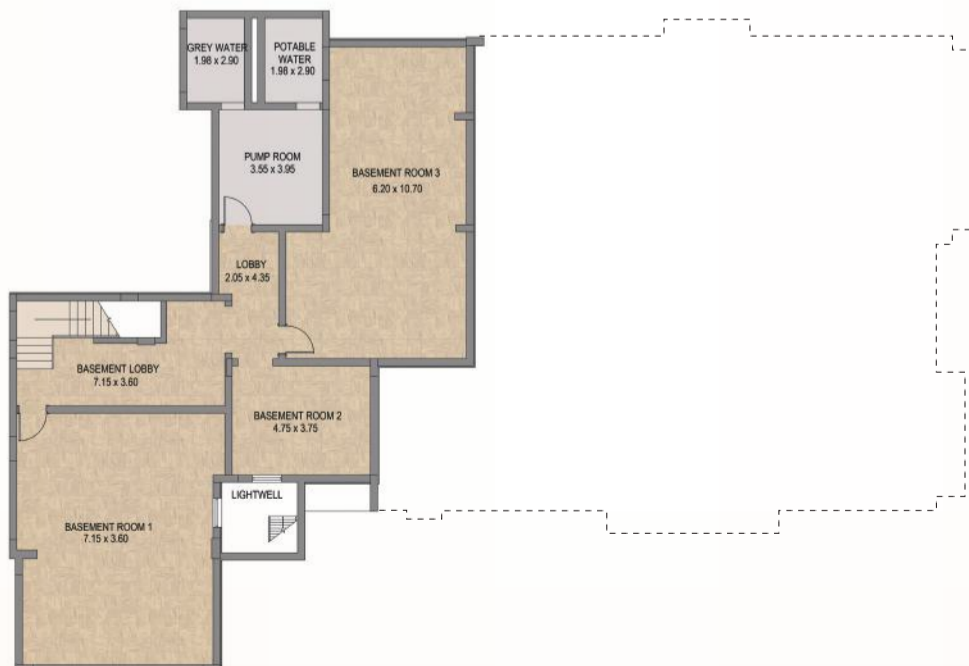
JUMEIRAH
GOLF ESTATES



GROUND FLOOR



FIRST FLOOR



BASEMENT FLOOR

Room dimensions are measured from internal wall to internal wall. Areas are measured from the exterior face of external walls and include all air-conditioned spaces, garages, fully enclosed balconies and covered terraces but exclude any open patios, terraces or balconies. All materials, dimensions and drawings are approximate. Information is subject to change notice. Drawings are not to scale and actual usable space may vary from stated floor plan. The developer reserves the right to make revisions to the floor plans.

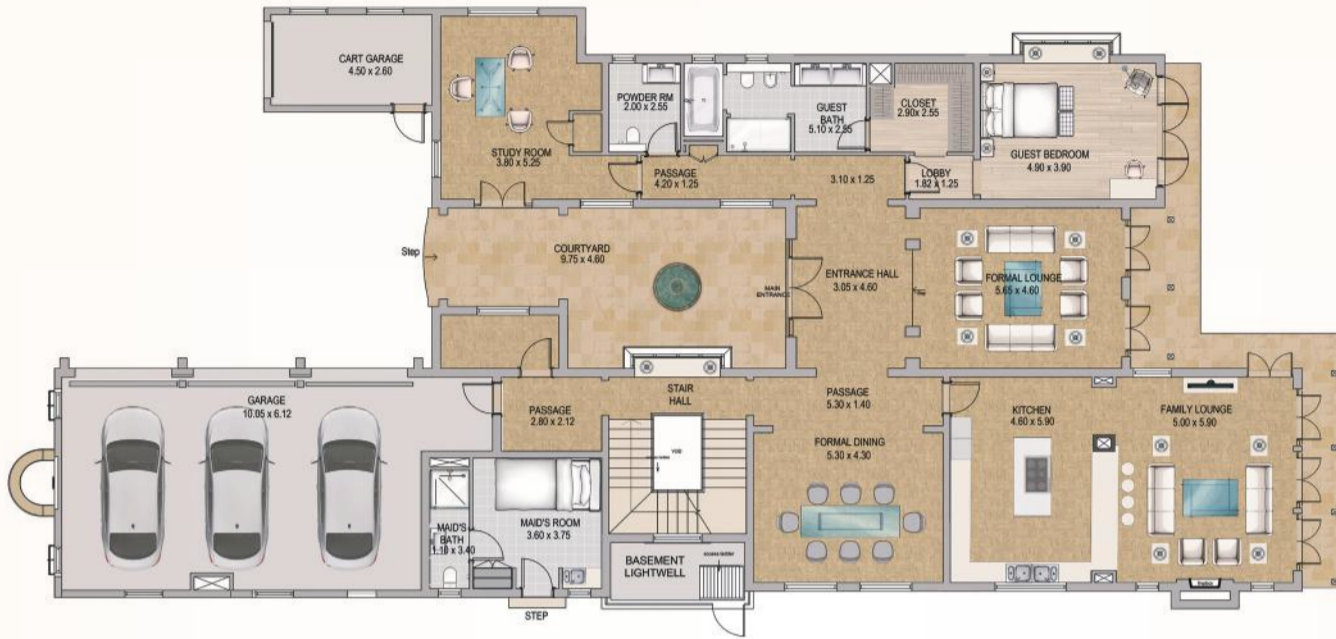


Redwood Avenue
at Jumeirah Golf Estates

ASHBURN-F1



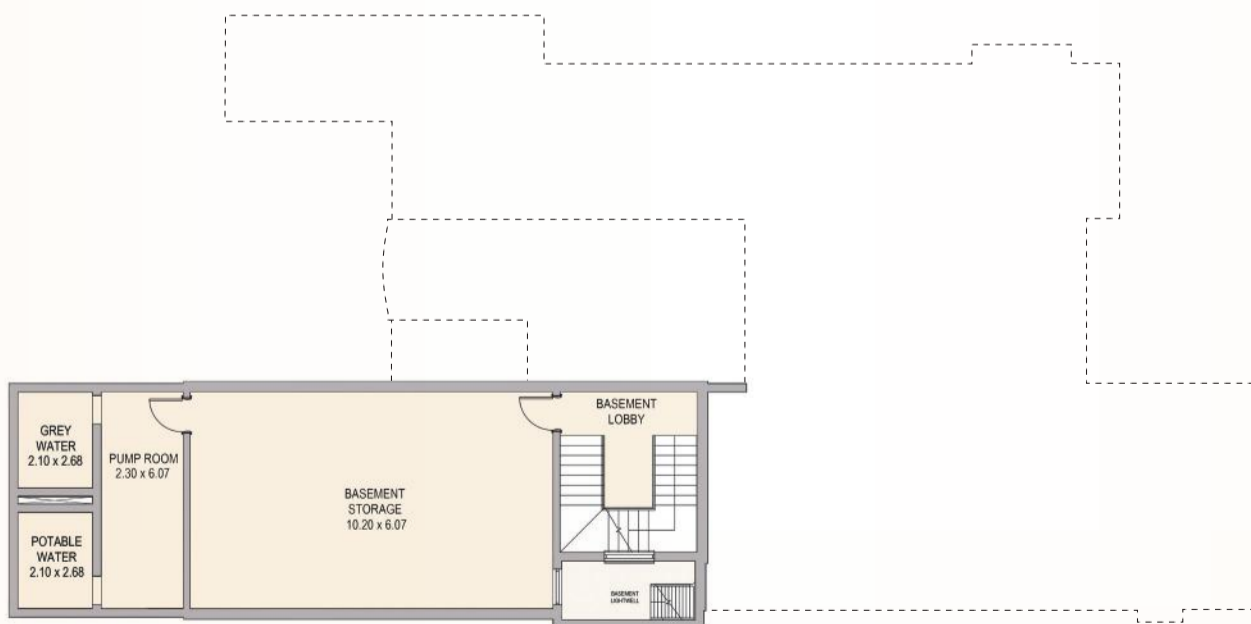
JUMEIRAH
GOLF ESTATES



GROUND FLOOR



FIRST FLOOR



BASEMENT FLOOR

Room dimensions are measured from internal wall to internal wall. Areas are measured from the exterior face of external walls and include all air-conditioned spaces, garages, fully enclosed balconies and covered terraces but exclude any open patios, terraces or balconies. All materials, dimensions and drawings are approximate. Information is subject to change notice. Drawings are not to scale and actual usable space may vary from stated floor plan. The developer reserves the right to make revisions to the floor plans.



Redwood Avenue
at Jumeirah Golf Estates

ABERDEEN-F2



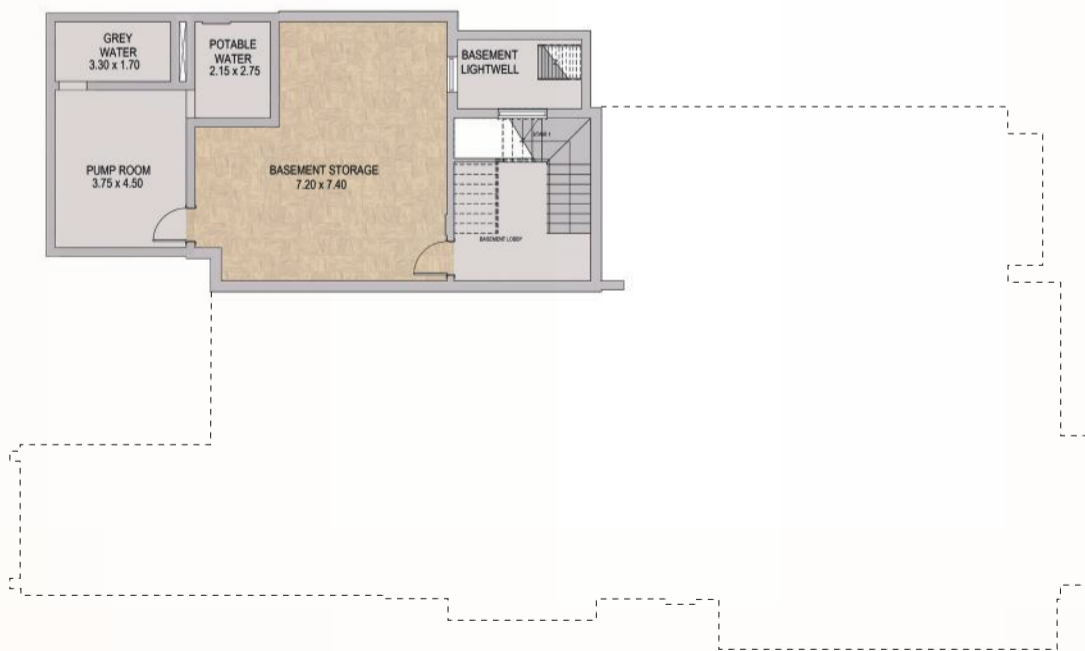
JUMEIRAH
GOLF ESTATES



GROUND FLOOR



FIRST FLOOR



BASEMENT FLOOR

Room dimensions are measured from internal wall to internal wall. Areas are measured from the exterior face of external walls and include all air-conditioned spaces, garages, fully enclosed balconies and covered terraces but exclude any open patios, terraces or balconies. All materials, dimensions and drawings are approximate. Information is subject to change notice. Drawings are not to scale and actual usable space may vary from stated floor plan. The developer reserves the right to make revisions to the floor plans.

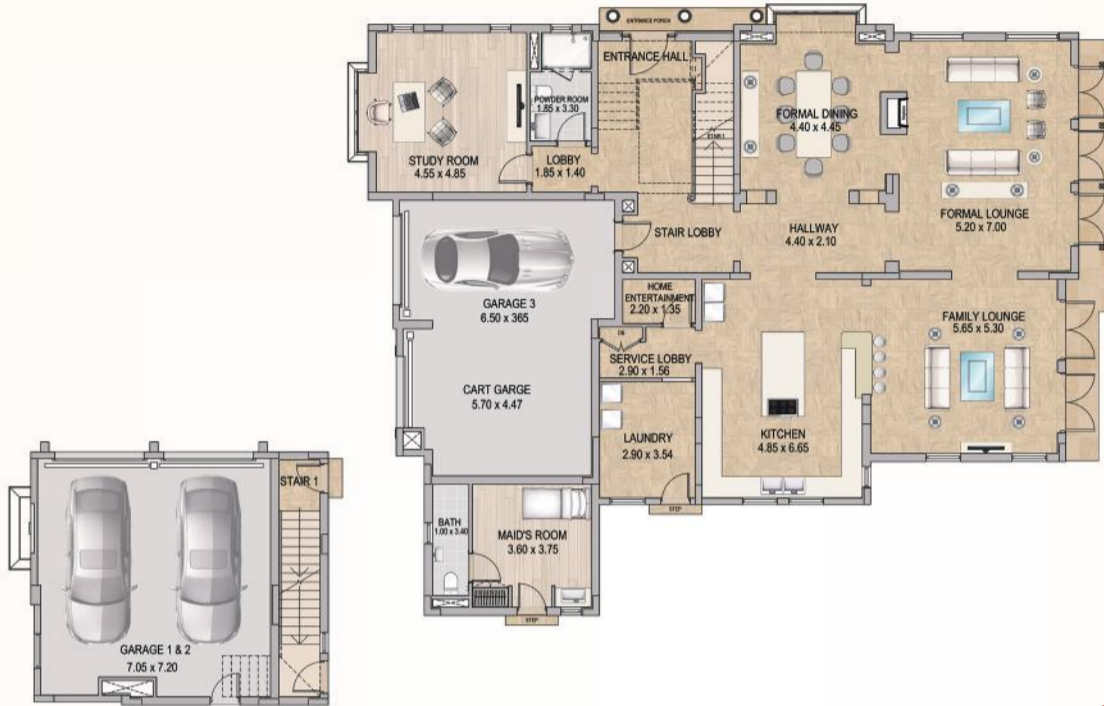


Redwood Avenue
at Jumeirah Golf Estates

BLACKHEATH-G



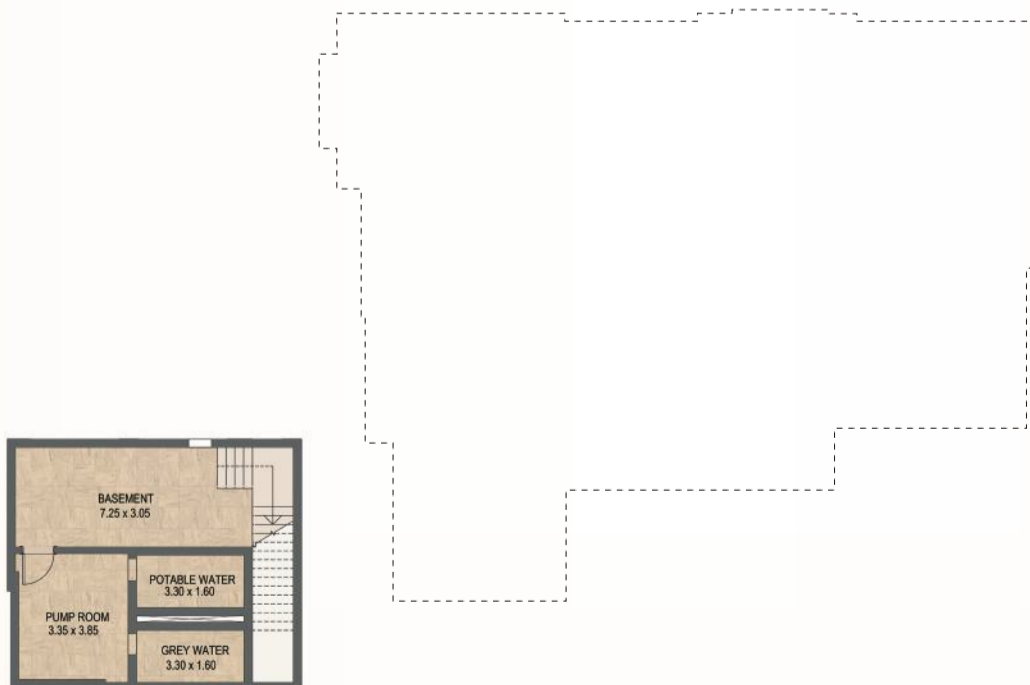
JUMEIRAH
GOLF ESTATES



GROUND FLOOR



FIRST FLOOR



BASEMENT FLOOR

Room dimensions are measured from internal wall to internal wall. Areas are measured from the exterior face of external walls and include all air-conditioned spaces, garages, fully enclosed balconies and covered terraces but exclude any open patios, terraces or balconies. All materials, dimensions and drawings are approximate. Information is subject to change notice. Drawings are not to scale and actual usable space may vary from stated floor plan. The developer reserves the right to make revisions to the floor plans.

Redwood Avenue
at Jumeirah Golf Estates



DISTRICT PLAN



- A - COUNTRY DOWN
- B1 - MELBOURNE
- B2 - TROON
- B3 - MELBOURNE
- C - SYDNEY
- D - JERSEY
- E1 - ONTARIO
- E2 - MOUGINS
- E3 - CAPE
- F1 - ASHBURN
- F2 - ABERDEEN
- G - BLACKHEATH
- H - GN
- PLOTS