

# Location

SEASIDE HILLS

AL ZORAH BEACHFRONT LIVING

Located within Al Zorah Shores neighboring the famous Oberoi Beach Resort.



ALZORAH

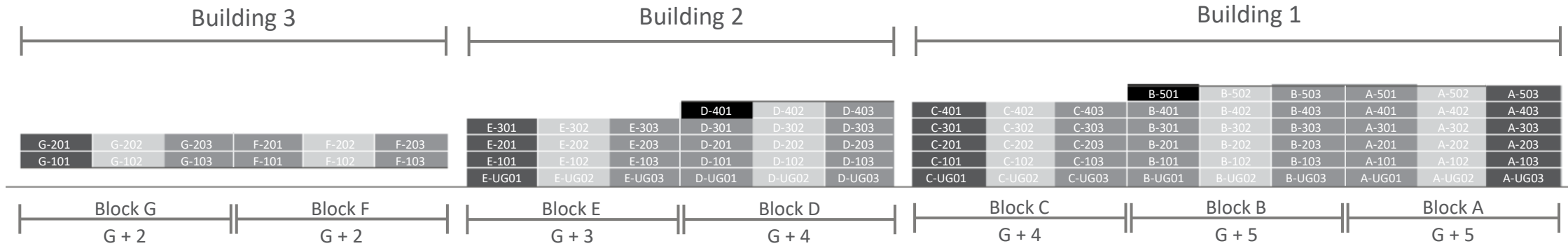
# Project

The project consists of 3 buildings with spectacular sea view and private beach access.



# Project Overview

A total of 90 units in Seaside Hills Residence, distributed into 3 Buildings and 7 Blocks:

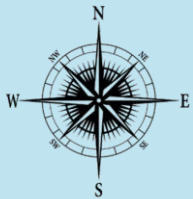


ONE BEDROOM  
30 UNITS

TWO BEDROOMS  
41 UNITS

THREE BEDROOMS  
17 UNITS

FOUR BEDROOMS  
2 UNITS



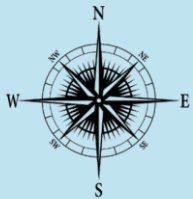
LEGEND:

- Block A
- Block B
- Block C
- Block D
- Block E



Floor Plates

UG FLOOR



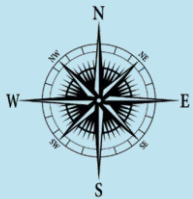
LEGEND:

- Block A
- Block B
- Block C
- Block D
- Block E
- Block F
- Block G



Floor Plates

1st & 2nd FLOOR



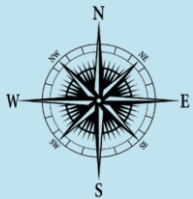
LEGEND:

- Block A
- Block B
- Block C
- Block D
- Block E



Floor Plates

3rd FLOOR



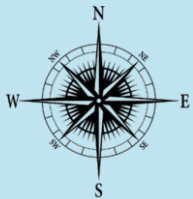
LEGEND:

- Block A
- Block B
- Block C
- Block D



Floor Plates

4th FLOOR



LEGEND:

Block A

Block B



Floor Plates

5th FLOOR

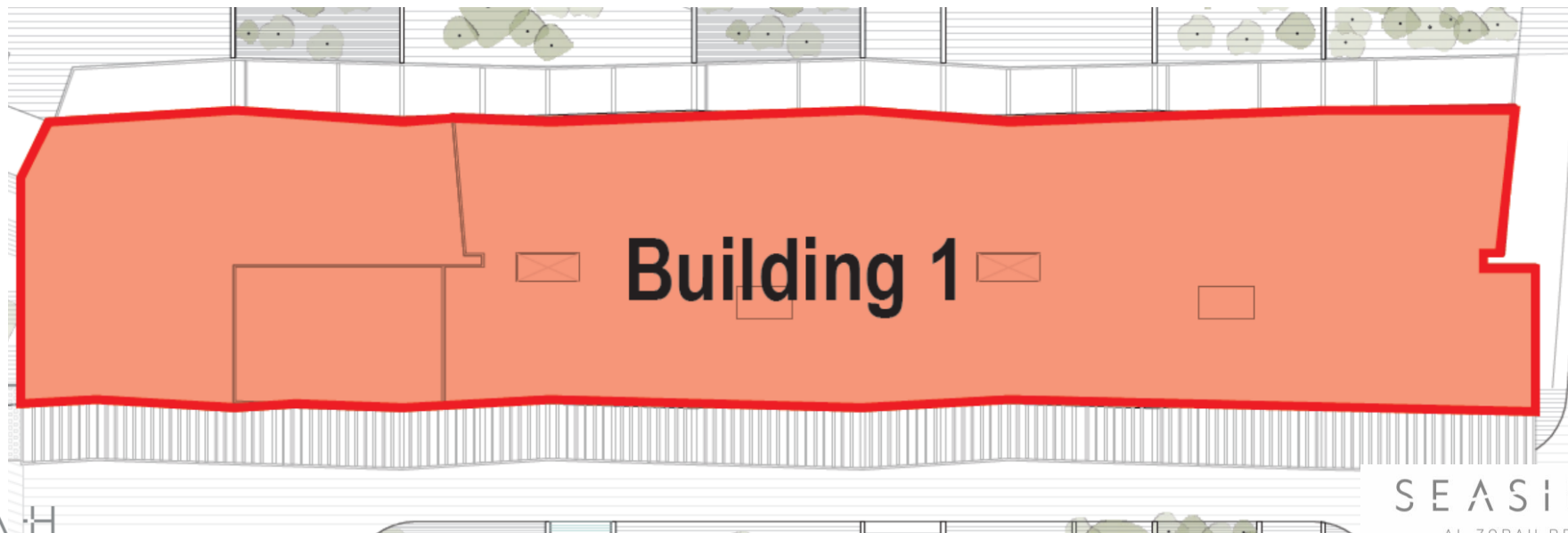
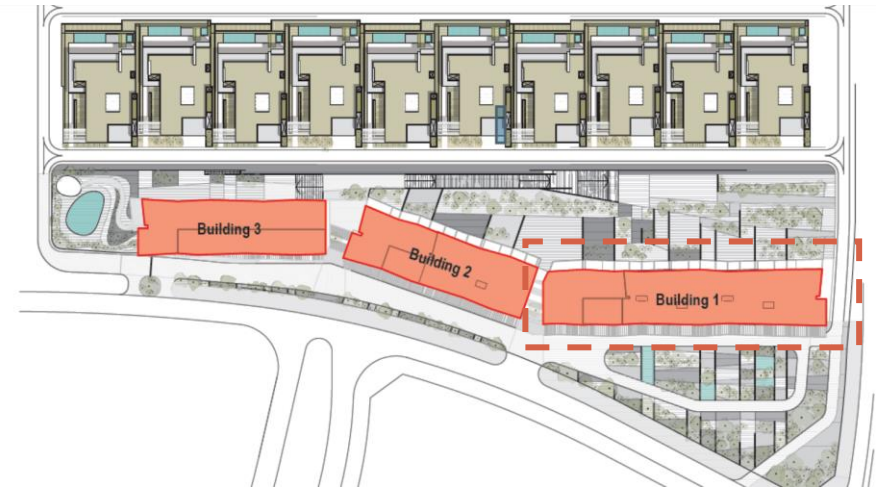
# Detailed Floor Plates

Building 1: Consists of 3 attached blocks (Block A, B & C)

Block A - G+5

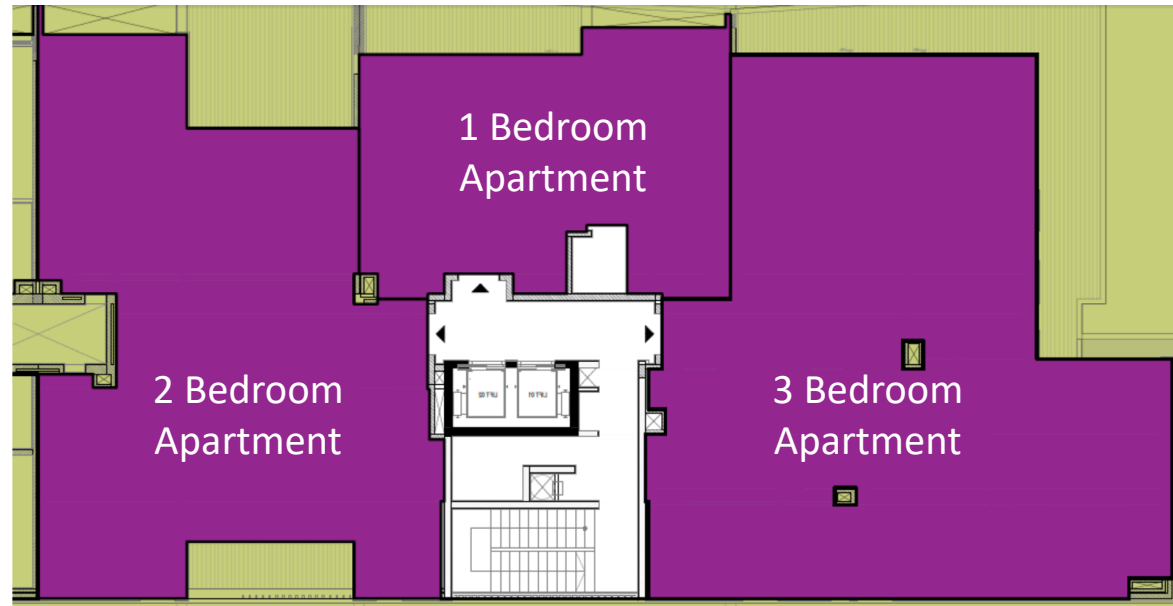
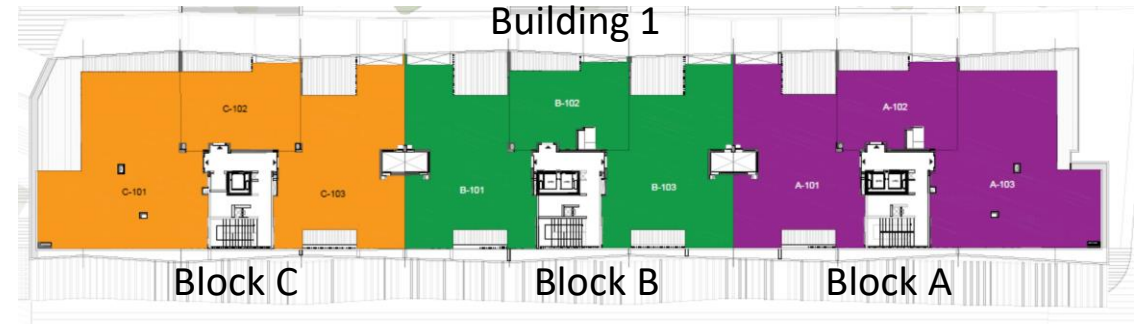
Block B - G+5

Block C - G+4



# Floor Plates – Block A

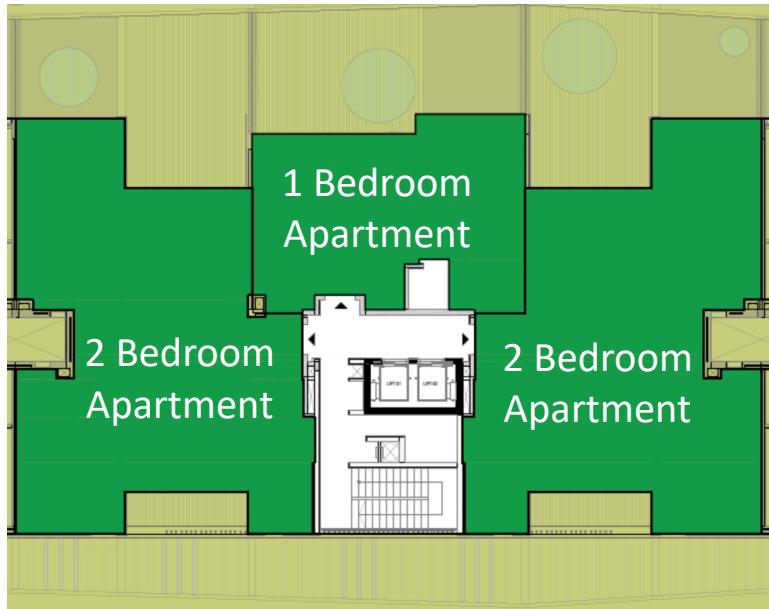
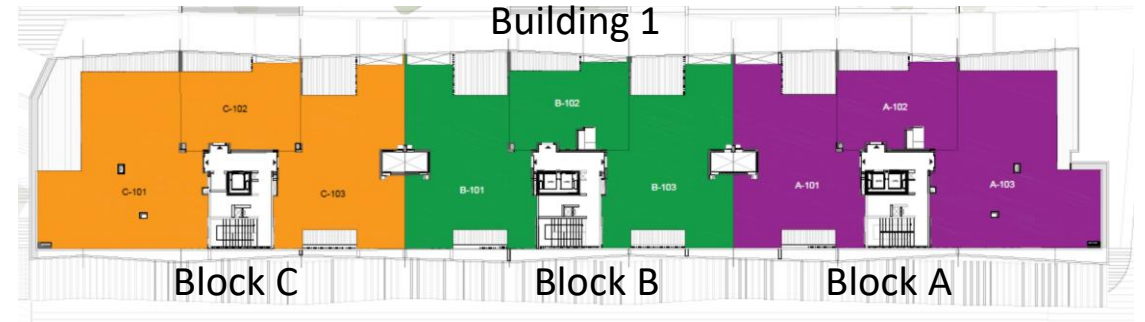
Block A: G+5



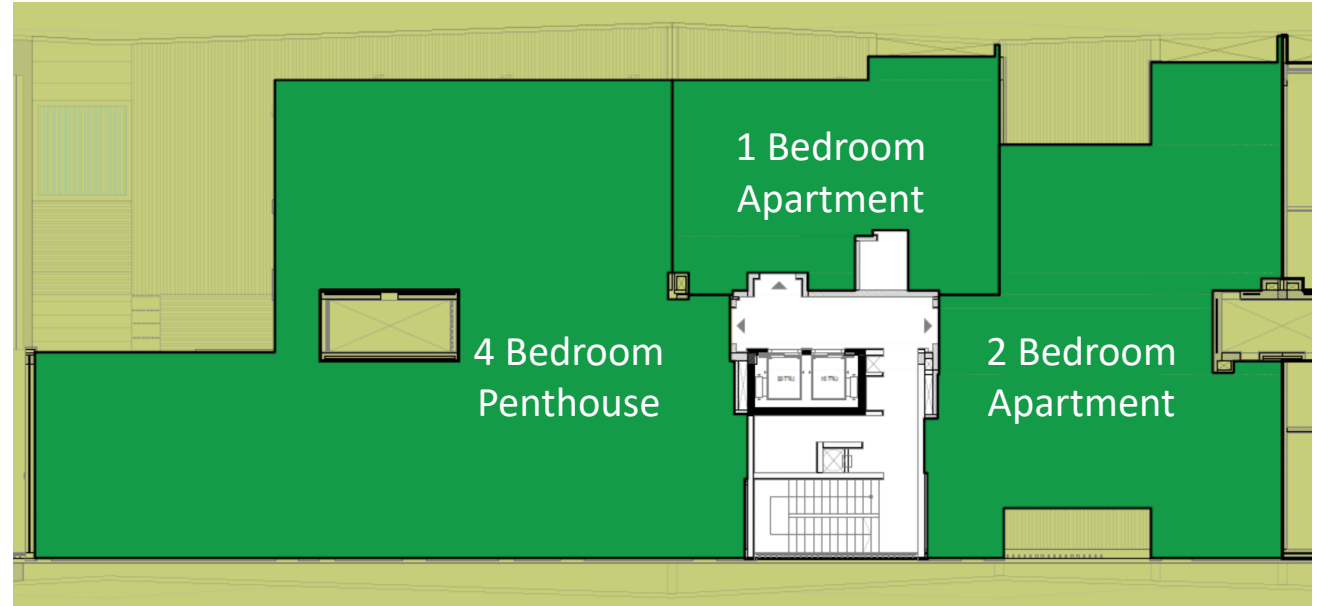
Typical Floor Plate (UG – 5<sup>th</sup> Floor)

# Floor Plates – Block B

Block B: G+5



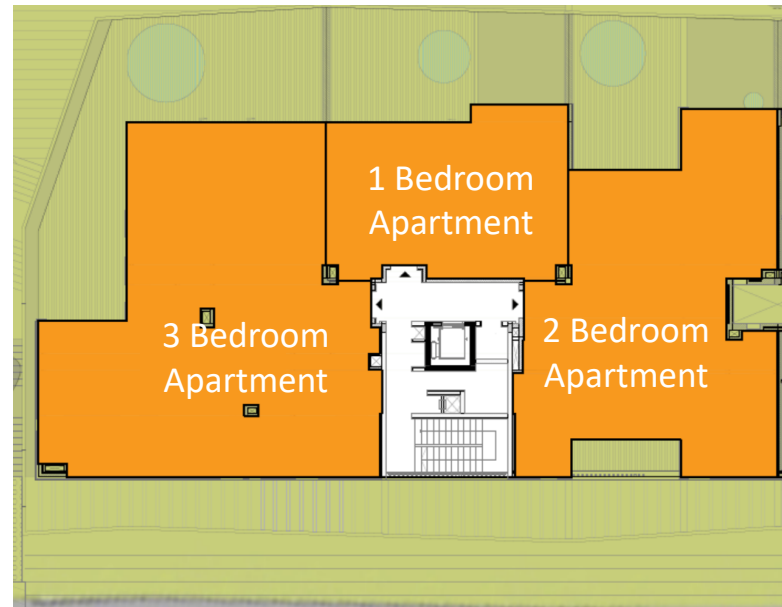
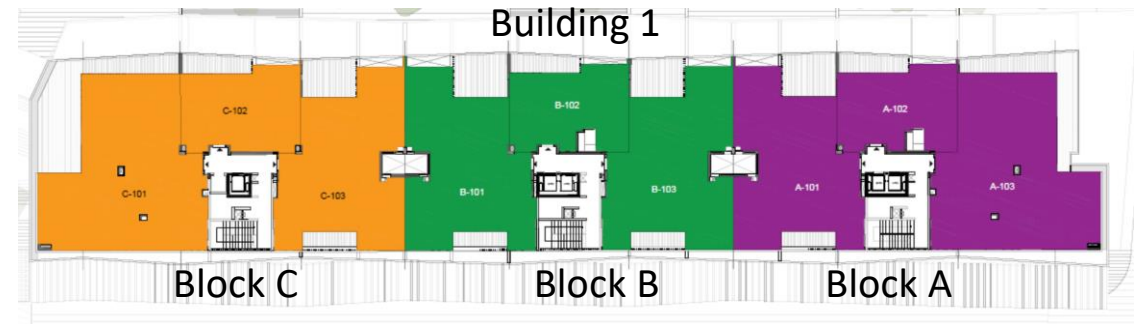
Typical Floor Plate (UG – 4<sup>th</sup> Floor)



Typical Floor Plate (5<sup>th</sup> Floor)

# Floor Plates – Block C

Block C: G+4



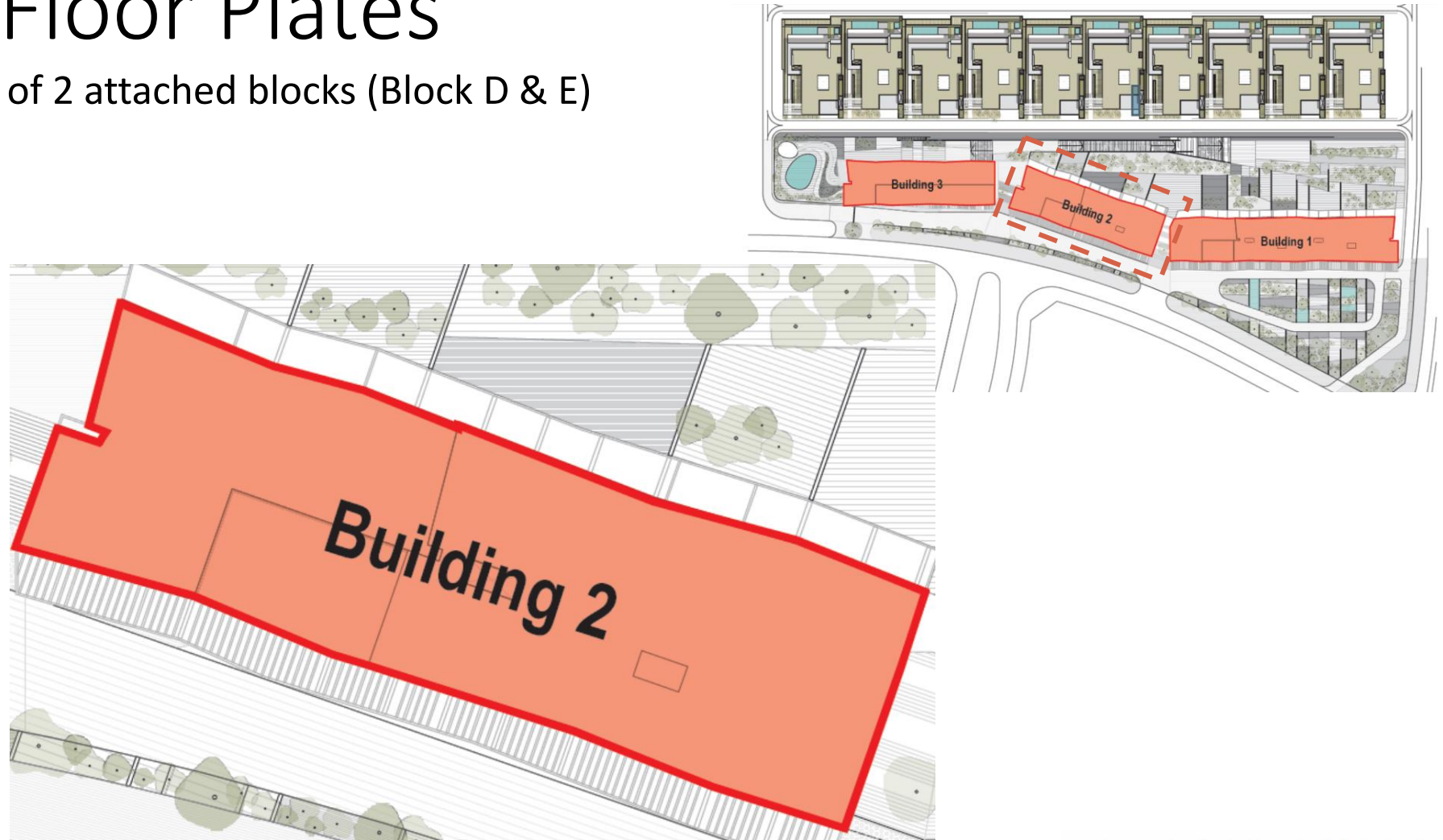
Typical Floor Plate (UG – 4<sup>th</sup> Floor)

# Detailed Floor Plates

Building 2: Consists of 2 attached blocks (Block D & E)

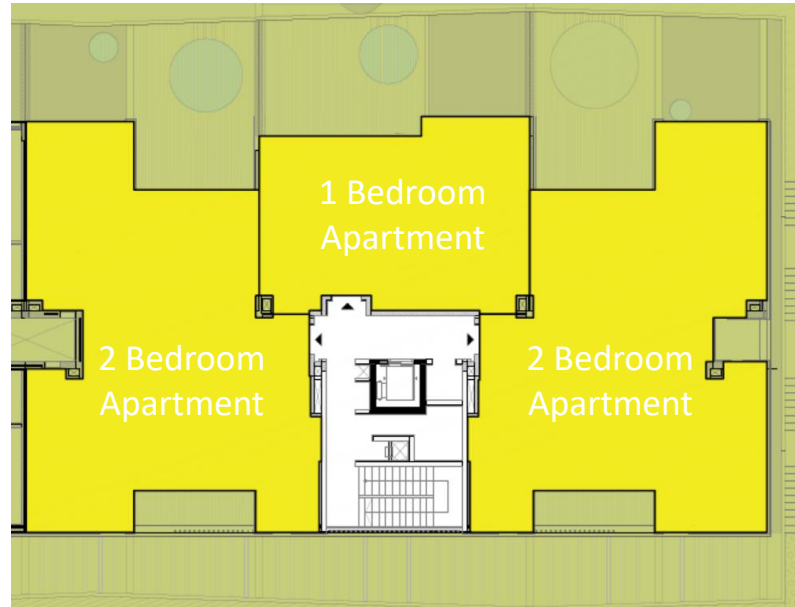
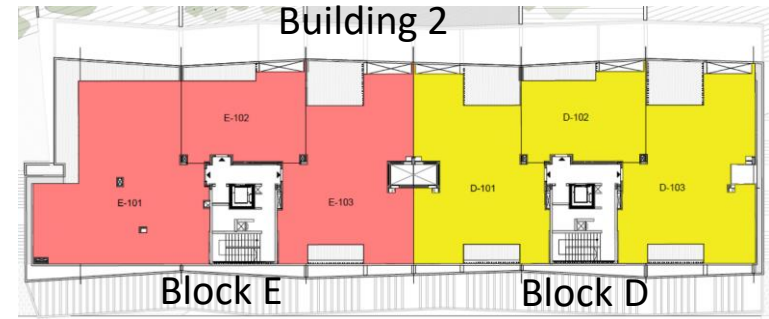
Block D - G+4

Block E - G+3

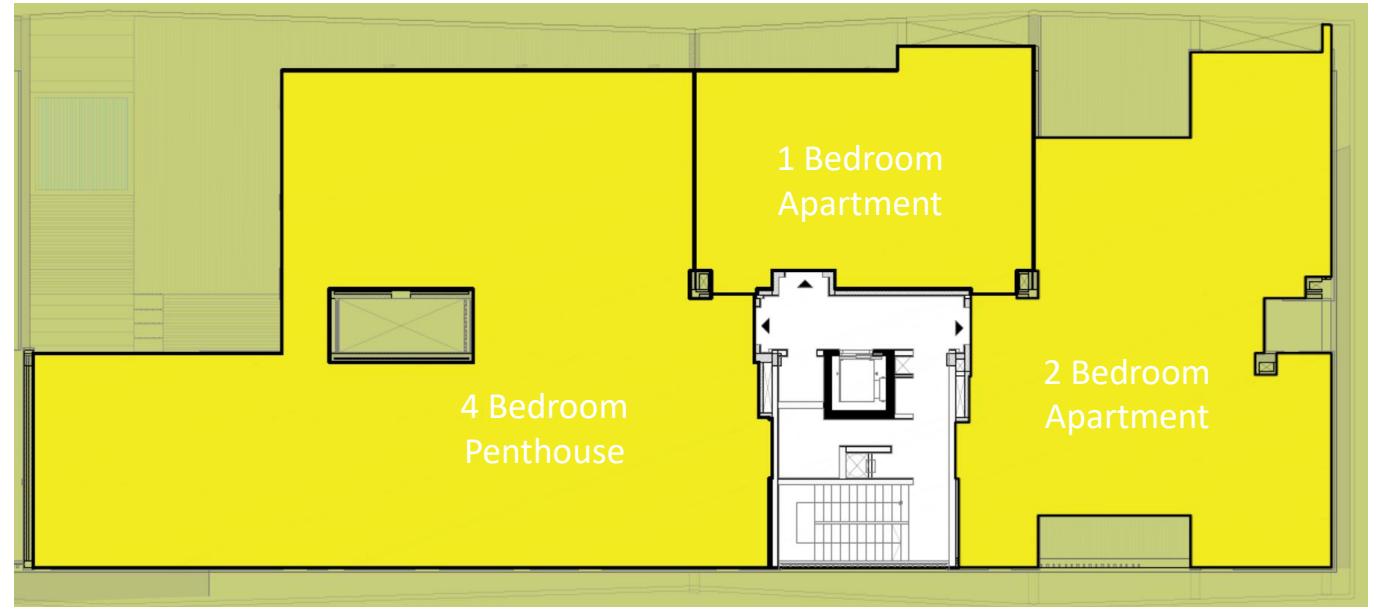


# Floor Plates – Block D

Block D: G+4



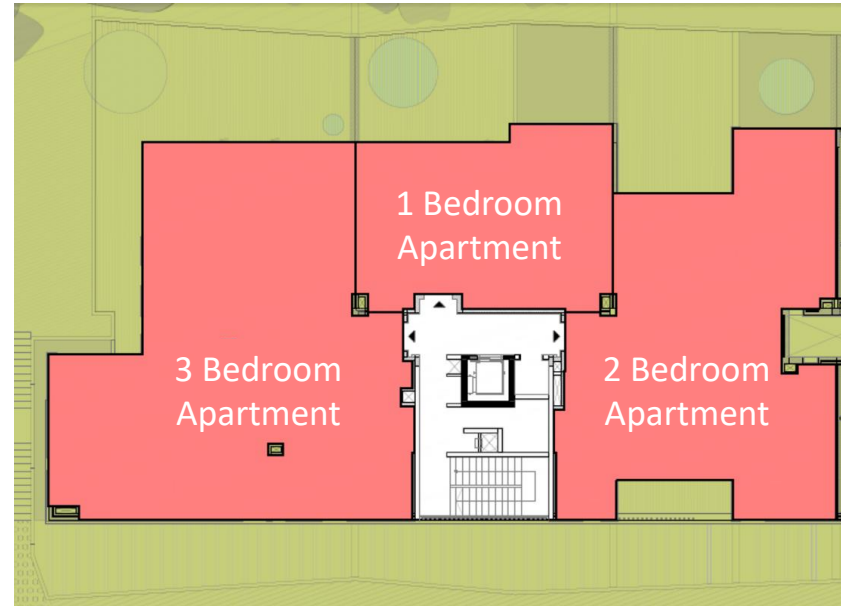
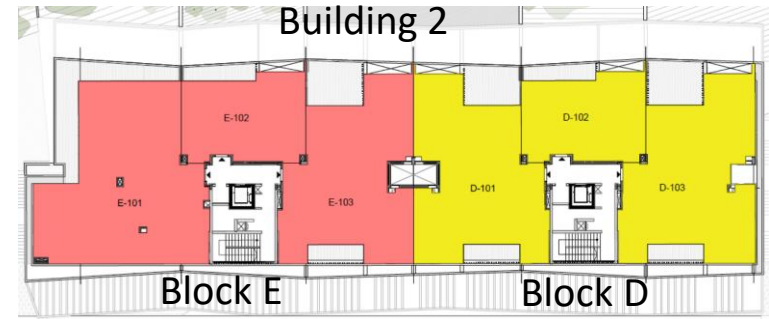
Typical Floor Plate (UG – 3<sup>rd</sup> Floor)



Typical Floor Plate (4<sup>th</sup> Floor)

# Floor Plates – Block E

Block E: G+3



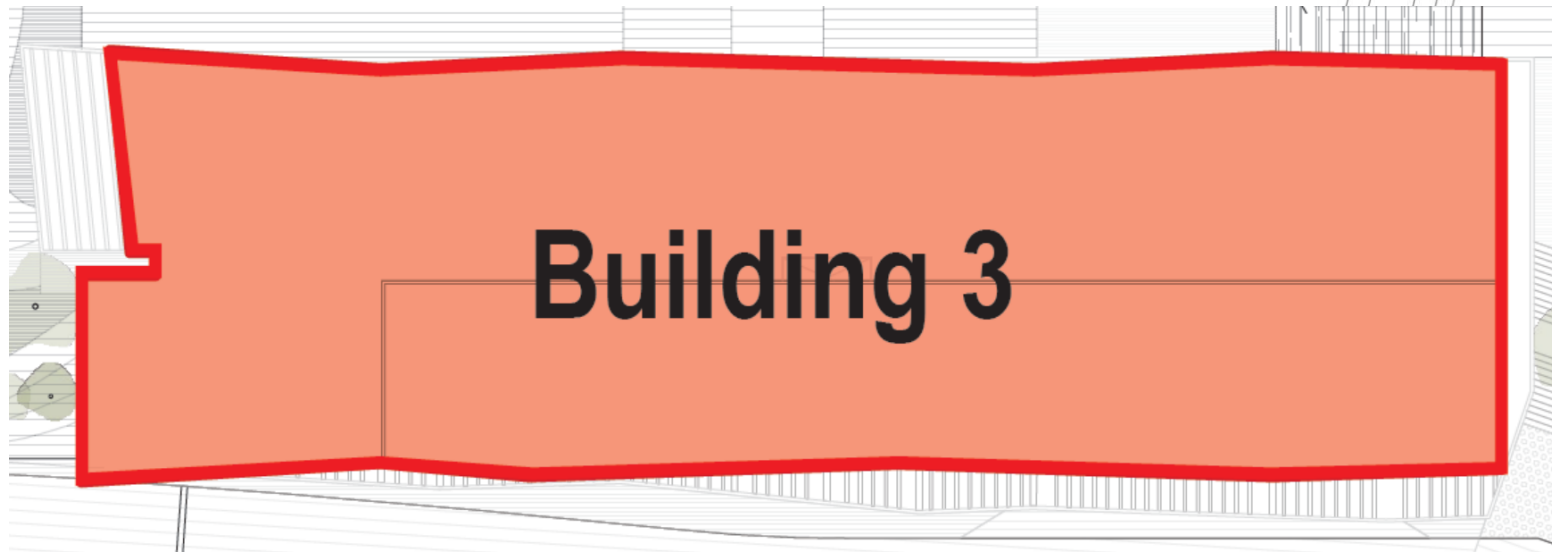
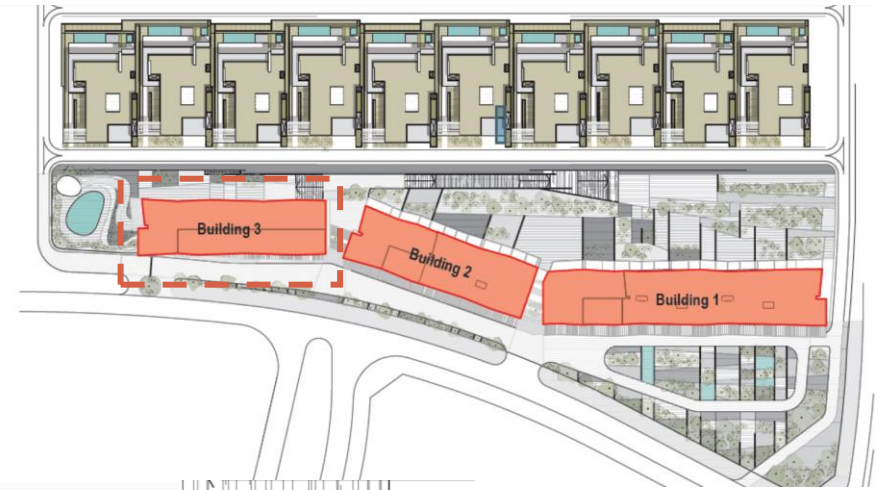
Typical Floor Plate (UG – 3<sup>rd</sup> Floor)

# Detailed Floor Plates

Building 3: Consists of 2 attached blocks (Block F & G)

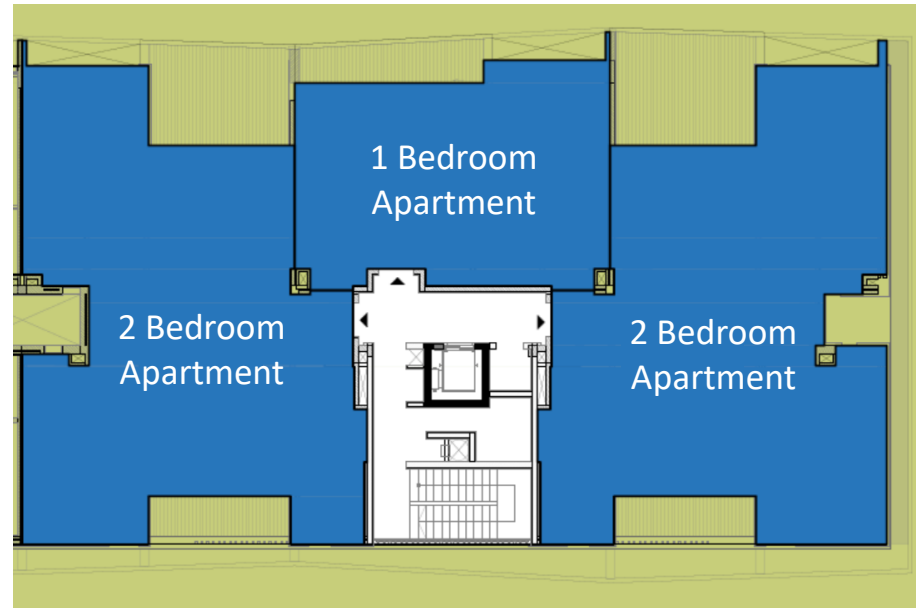
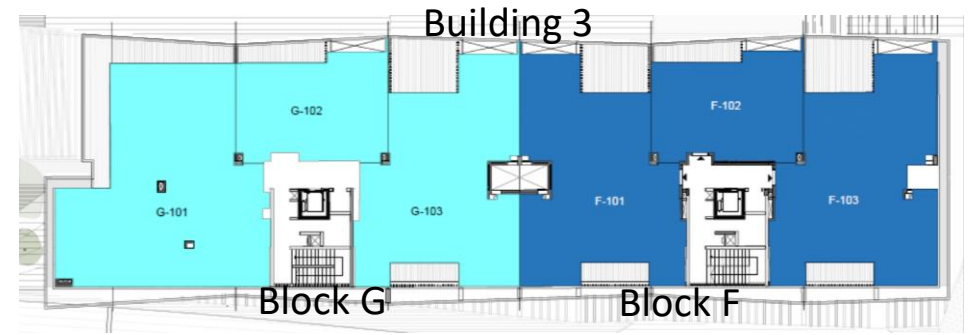
Block F - G+2

Block G - G+2



# Floor Plates – Block F

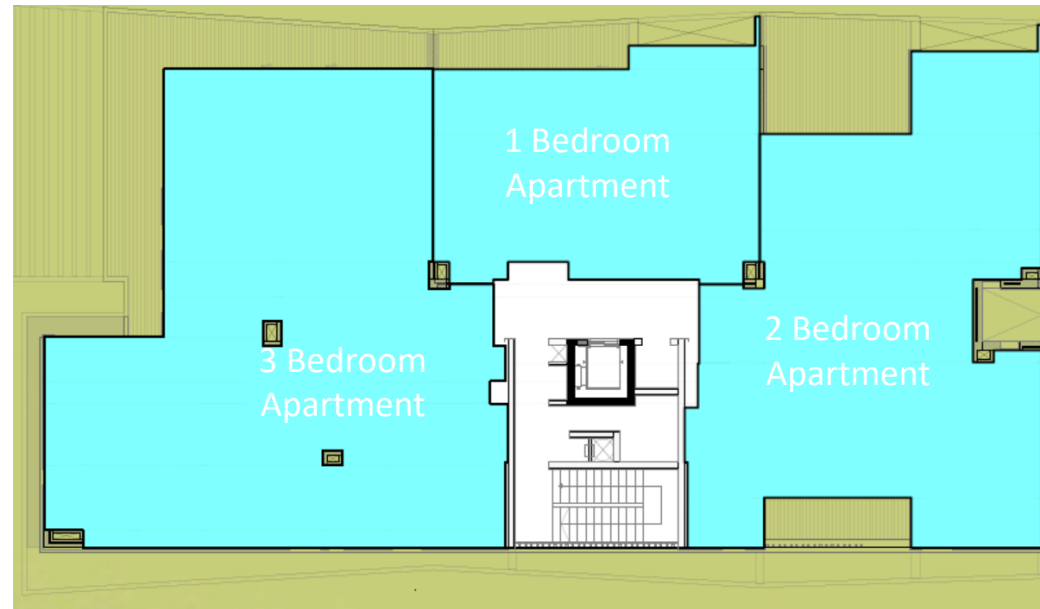
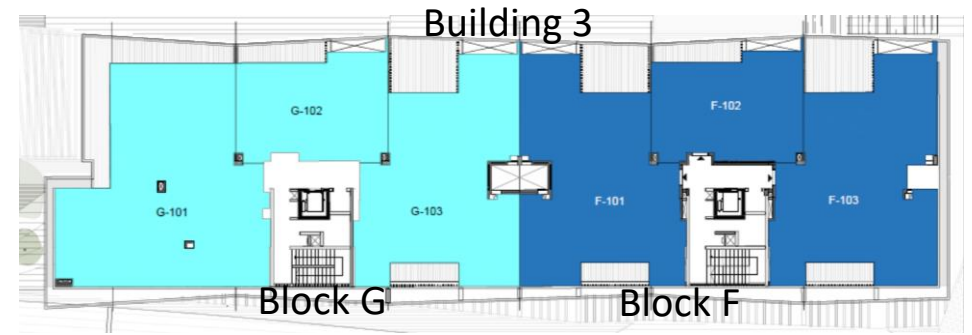
Block F: G+2 (UG Floor Amenities)



Typical Floor Plate (1<sup>st</sup> & 2<sup>nd</sup> Floor)

# Floor Plates – Block G

Block G: G+2 (UG Floor Amenities)



Typical Floor Plate (1<sup>st</sup> & 2<sup>nd</sup> Floor)

# Floor Plans

877

SQFT  
EXCLUDING TERRACE AREA

01 DINING AND LIVING  
6.7m x 5.0m (36sqm)

02 MASTER BEDROOM  
4.0m x 6.0m (30.8sqm)

03 KITCHEN  
2.4m x 2.9m

04 TERRACE  
(VARIABLE)

Entrance Lobby  
1.8m x 1.2m

Dressing  
2.3m x 1.7m

Guest Bathroom  
1.6m x 1.7m

Master Bathroom  
2.1m x 3.1m



# Floor Plans

1,619

SQFT  
EXCLUDING TERRACE AREA

- 01 DINING AND LIVING  
5.0m x 8.9m (56.6sqm)
  - 02 MASTER BEDROOM  
4.0m x 4.3m (27.3sqm)
  - 03 BEDROOM 1  
4.0m X 4.0m (25.2sqm)
  - 04 KITCHEN  
5.0m X 2.8m (25.0sqm)
  - 05 TERRACE  
(VARIABLE)
- Entrance Lobby  
2.2m x 1.8m
- Guest Bathroom  
2.1m x 2.0m
- Dressing  
2.0m x 2.7m
- Master Bathroom  
2.1m x 2.4m
- Dressing 1  
1.8m x 2.6m
- Bathroom 1  
2.0m x 2.3m
- Staff Bedroom  
2.4m x 2.9m
- Staff Bathroom  
2.5m x 1.4m

ALZORAH



SEASIDE HILLS  
AL ZORAH BEACHFRONT LIVING

# Floor Plans

2,115

SQFT  
EXCLUDING TERRACE AREA

01 DINING AND LIVING  
8.7m x 7.2m (69.2sqm)

Entrance Lobby  
7.2m x 1.8m

SAS  
2.0m x 2.2m

Guest Bathroom  
1.7m x 1.7m

02 MASTER BEDROOM  
5.0m x 4.0m (39.1sqm)

Dressing  
4.0m x 1.8m

Walk-in Closet  
2.2m x 2.4m

Master Bathroom  
2.7m x 2.4m

03 BEDROOM 1  
4.0m X 4.6m (18.5sqm)

04 BEDROOM 2  
4.0m X 4.6m (18.5sqm)

05 BATHROOM  
2.0m x 2.8m (5.4sqm)

Corridor  
2.0m x 3.7m

06 KITCHEN  
3.7m X 3.0m (17.6sqm)

Staff Bedroom  
2.0m x 2.0m

Staff Bathroom  
1.5m x 2.0m

07 TERRACE  
(VARIABLE)



ALZORAH

SEASIDE HILLS  
AL ZORAH BEACHFRONT LIVING

# Floor Plans

3,082

SQFT  
EXCLUDING TERRACE AREA

01 DINING AND LIVING  
13.1m x 9.0m (98.1sqm)

Entrance Lobby  
2.1m x 1.8m

Guest Bathroom  
1.8m x 1.7m

02 MASTER BEDROOM  
5.6m x 3.8m (39.7sqm)

Dressing  
2.7m x 1.6m

Walk-in Closet  
2.1m x 2.4m

Master Bathroom  
3.3m x 2.4m

03 BEDROOM 1  
3.8m x 4.6m (18.5sqm)

Bathroom  
2.0m x 2.8m

04 BEDROOM 2  
4.2m x 4.6m (18.3sqm)

05 BEDROOM 3  
3.9m x 4.6m (30.4sqm)

Dressing  
2.0m x 3.4m

Bathroom  
1.9m x 2.9m

06 KITCHEN  
4.4m x 2.7m (18.6sqm)

Room  
1.9m x 1.7m

Staff Bedroom  
2.4m x 2.2m

Staff Bathroom  
1.2m x 2.3m

07 TERRACE  
(VARIABLE)



ALZORAH

SEASIDE HILLS  
AL ZORAH BEACHFRONT LIVING

# Payment Plan: 50% / 50%

The payment will be scheduled as per the following structure:

1 <sup>st</sup> Payment	10%	On SPA* date
2 <sup>nd</sup> Payment	5%	3 Months from SPA date
3 <sup>rd</sup> Payment	10%	9 Months from SPA date
4 <sup>th</sup> Payment	10%	15 Months from SPA date
5 <sup>th</sup> Payment	15%	21 Months from SPA date
Last Payment	50%	On Handover (Q4 – 2025)