

سدر ريزيدنسز

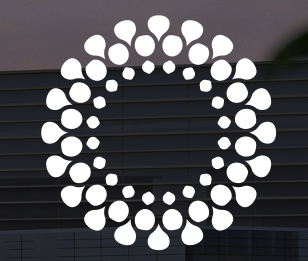
SIDR RESIDENCES

FLOOR PLANS



Live in the new centre of Dubai's future

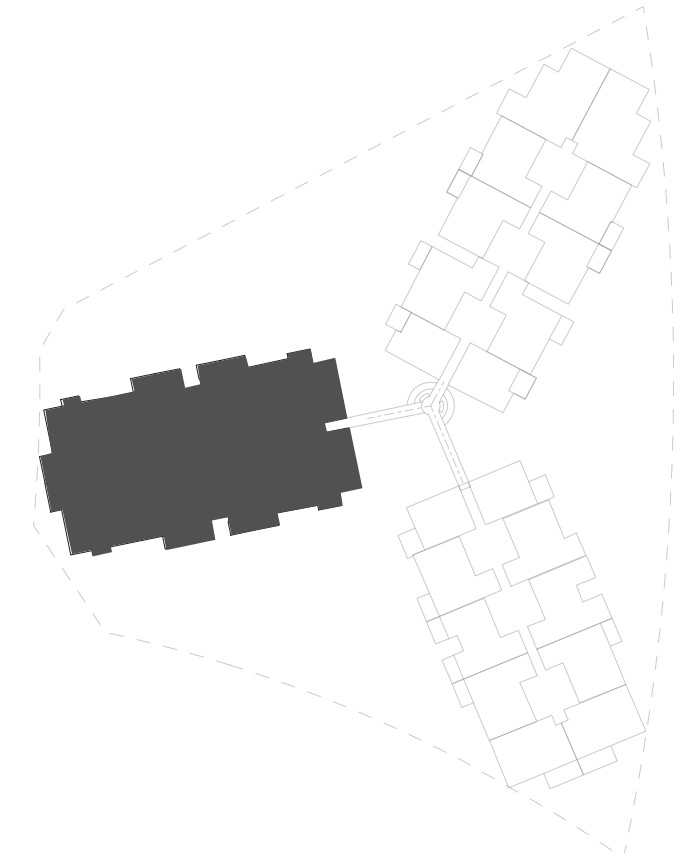
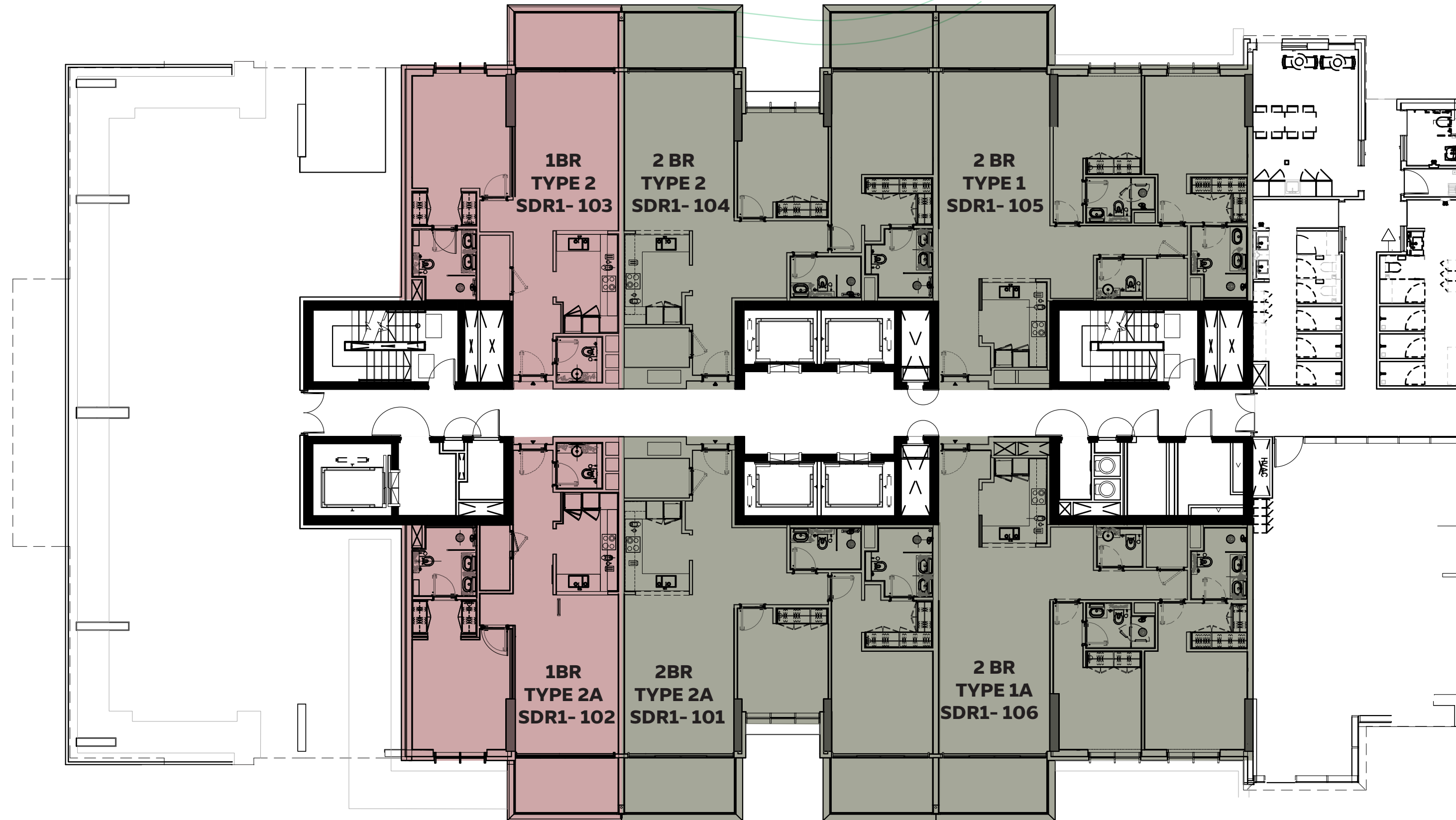
من تطوير  
DEVELOPED BY



مدينة إكسبو دبي  
EXPO CITY DUBAI

# Sidr Residences 1 - floor plans

سدر ريزيدنسز  
SIDR RESIDENCES



## SIDR RESIDENCES 1 1<sup>ST</sup> FLOOR

- 1BR TYPE 2 / TYPE 2A
- 2BR TYPE 1 / TYPE 1A  
2BR TYPE 2 / TYPE 2A

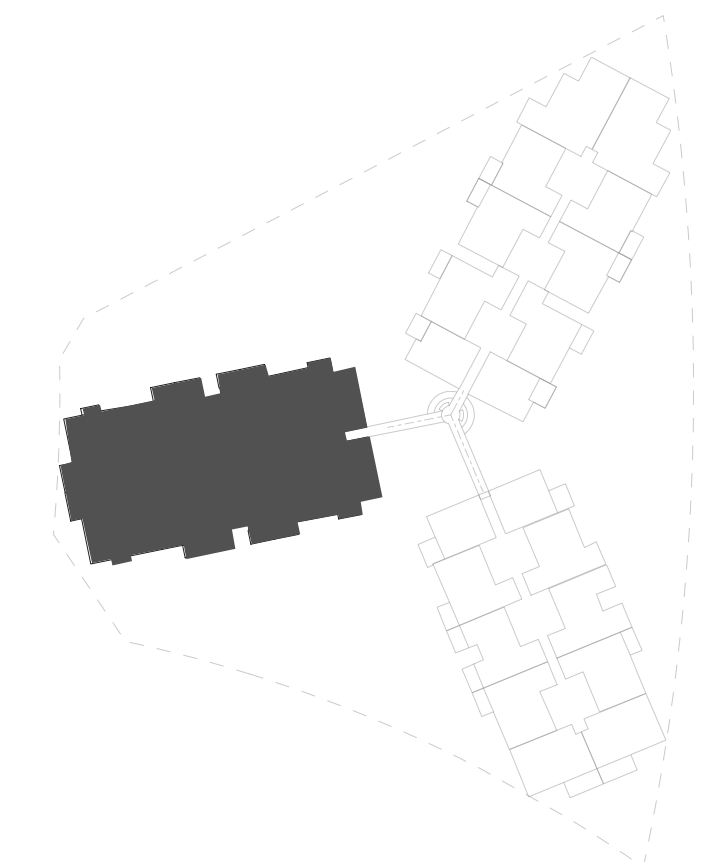
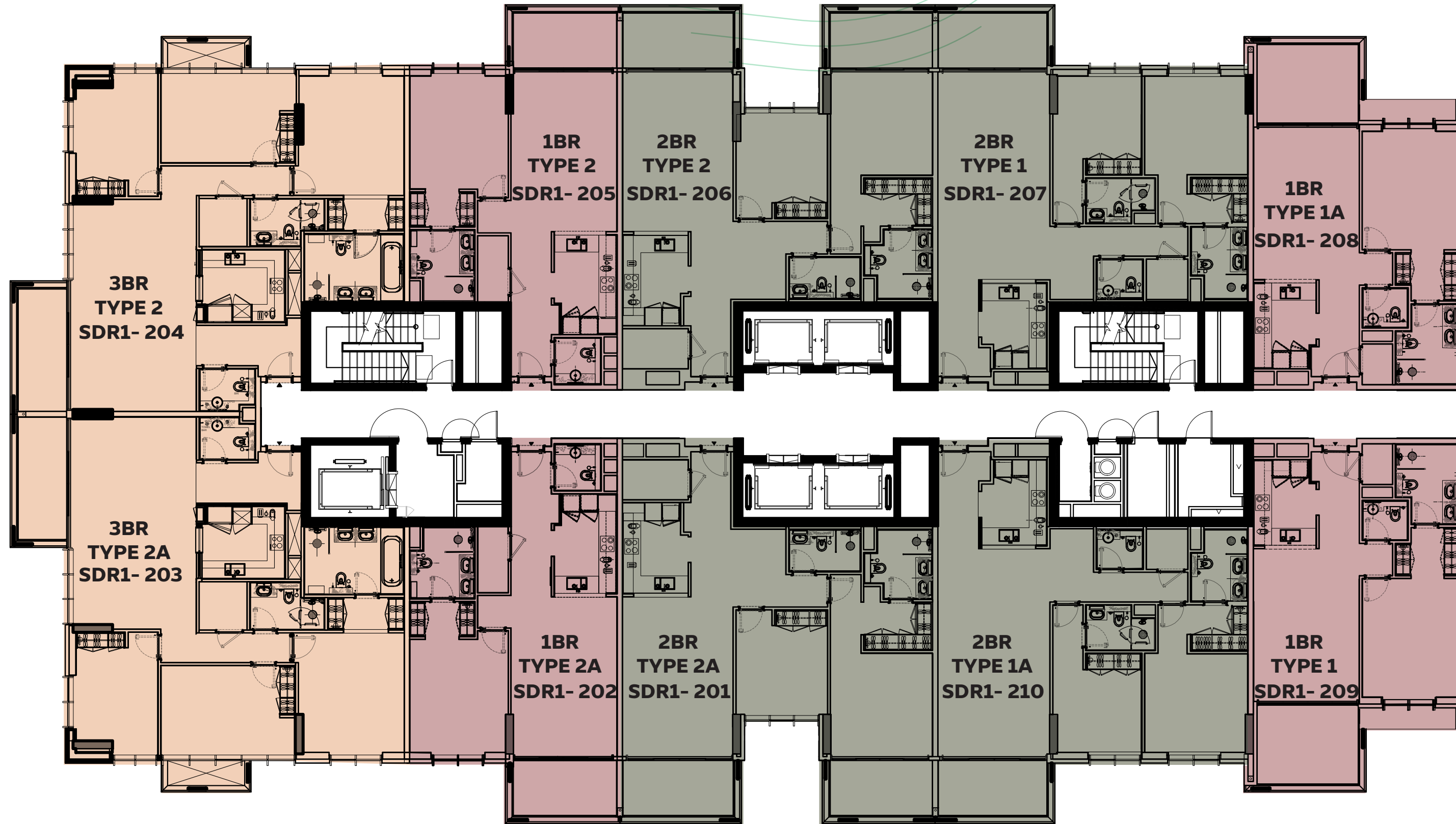
DEVELOPED BY



1. All room dimensions are in metric and measured to structural elements, and exclude wall finishes and construction tolerances. 2. All dimensions have been provided by our consultant architects. 3. All materials, dimensions, drawings, features and amenities, are approximate at the time of printing. 4. Actual area may vary from stated area. 5. Drawings are not to scale E&OE. 6. The developer reserves the right to make revisions to the floor plans and any features, materials, dimensions, drawings, and amenities mentioned on this plan and in the brochure without notice. 7. Unit plans may exist in mirrored version.

# Sidr Residences 1 - floor plans

سدر ريزيدنسز  
SIDR RESIDENCES



**SIDR RESIDENCES 1**  
TYPICAL FLOORS  
FROM 2<sup>ND</sup> TO 15<sup>TH</sup> FLOOR

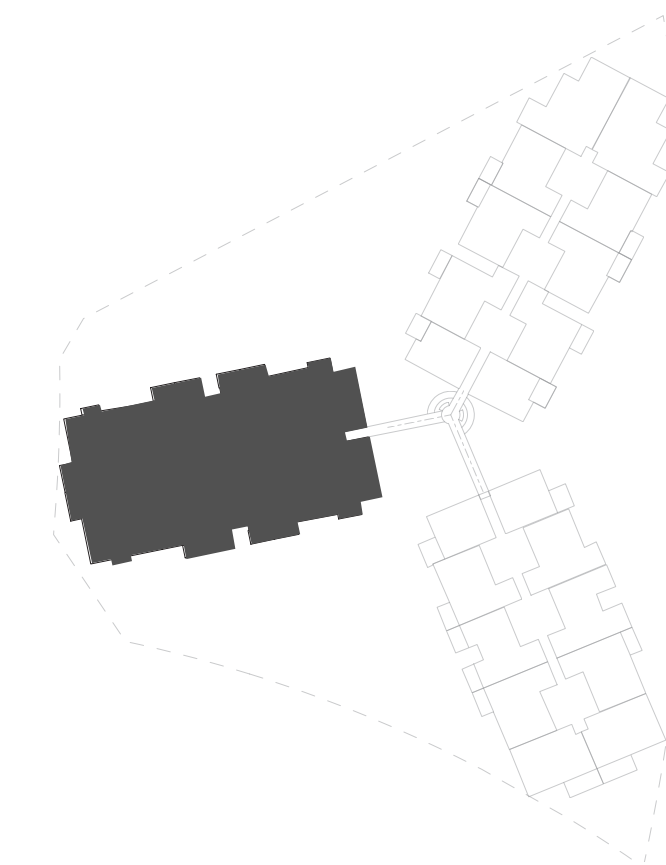
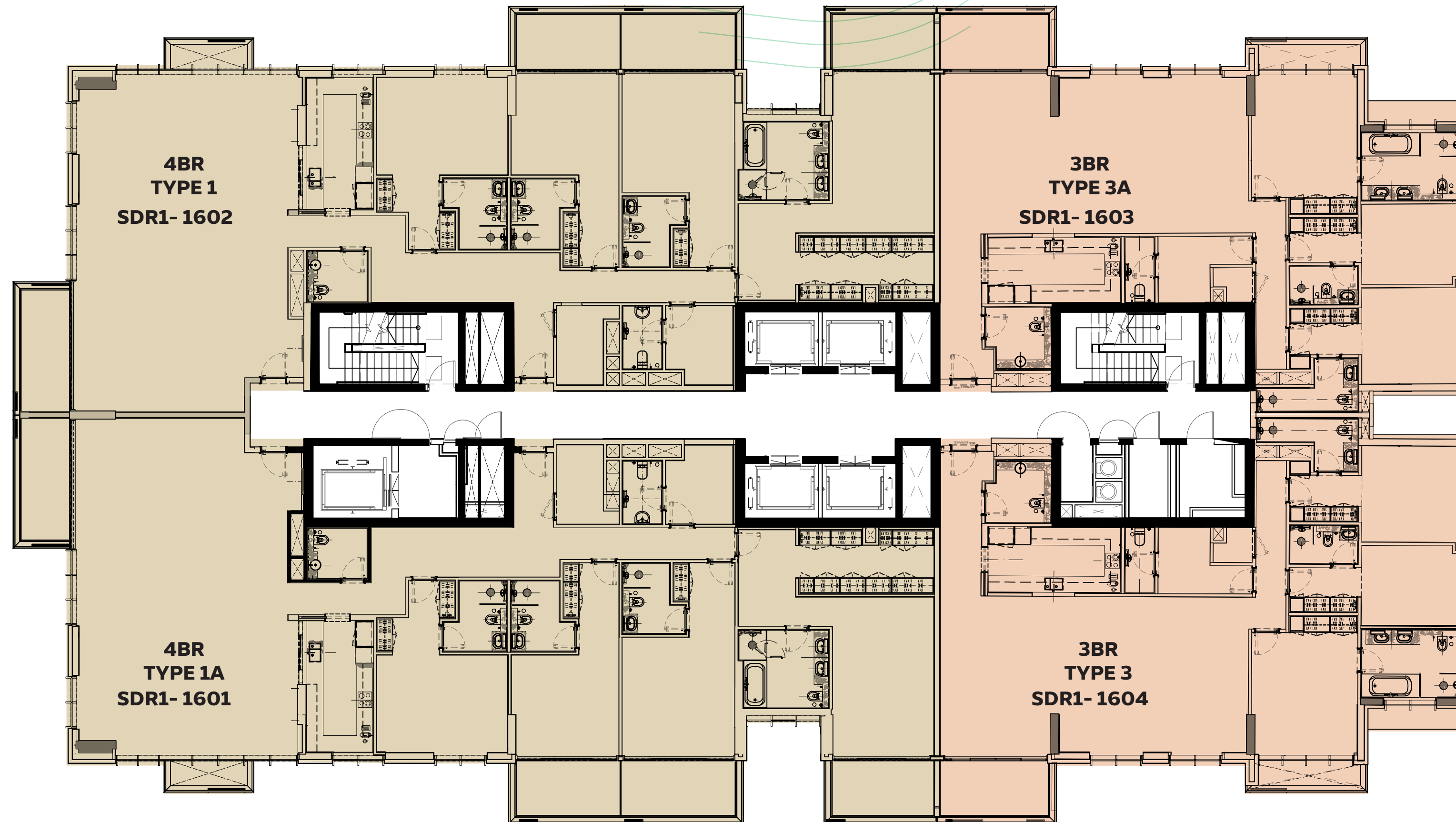
- 1BR TYPE 1 / TYPE 1A  
1BR TYPE 2 / TYPE 2A
- 2BR TYPE 1 / TYPE 1A  
2BR TYPE 2 / TYPE 2A
- 3BR TYPE 2 / TYPE 2A



1. All room dimensions are in metric and measured to structural elements, and exclude wall finishes and construction tolerances. 2. All dimensions have been provided by our consultant architects. 3. All materials, dimensions, drawings, features and amenities, are approximate at the time of printing. 4. Actual area may vary from stated area. 5. Drawings are not to scale E&OE. 6. The developer reserves the right to make revisions to the floor plans and any features, materials, dimensions, drawings, and amenities mentioned on this plan and in the brochure without notice. 7. Unit plans may exist in mirrored version.

# Sidr Residences 1 - floor plans

سدر ریزیدنسز  
SIDR RESIDENCES



**SIDR RESIDENCES 1**  
16<sup>TH</sup> FLOOR

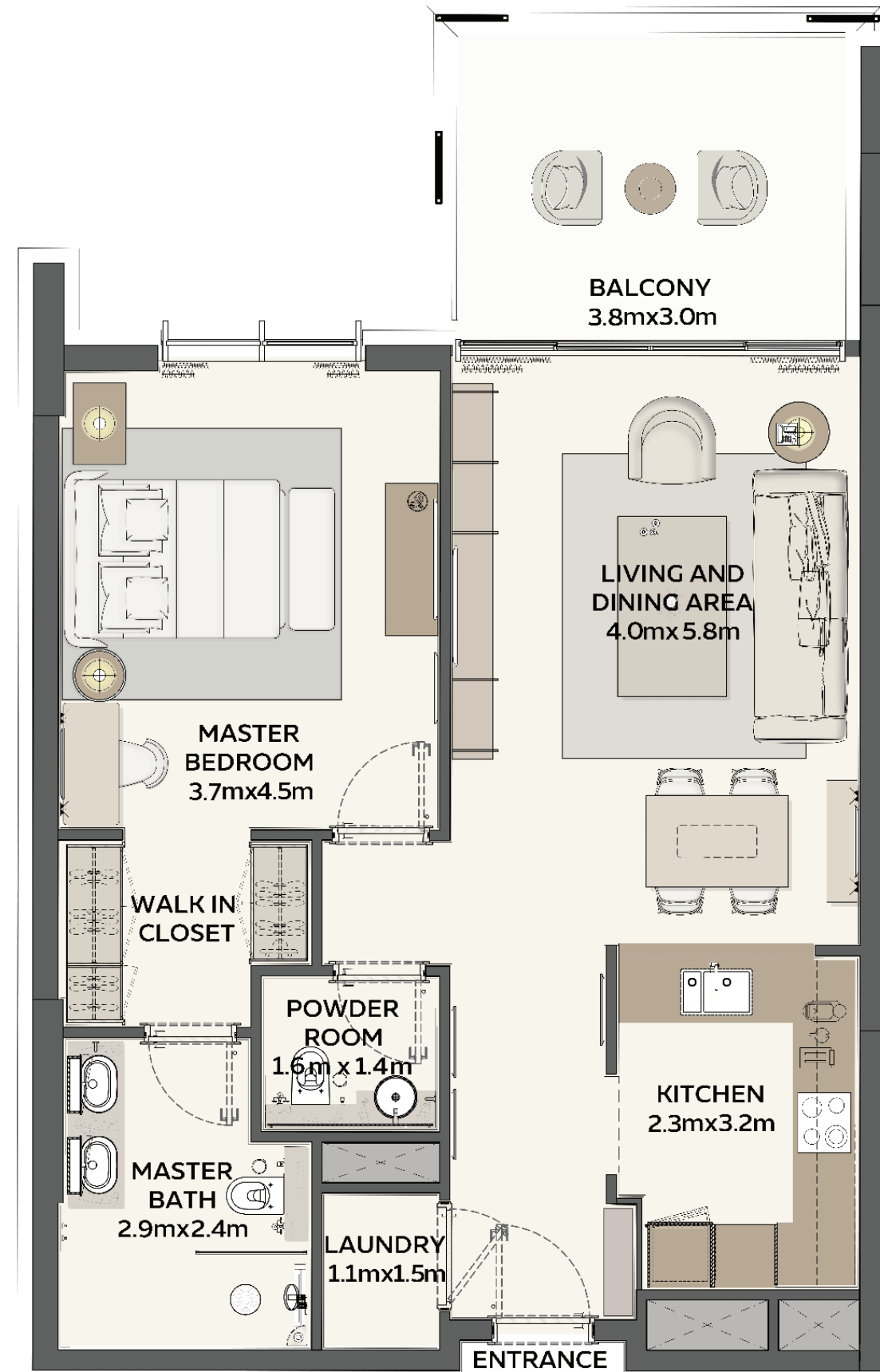
- 3BR TYPE 3 / TYPE 3A
- 4BR TYPE 1 / TYPE 1A



DEVELOPED BY  
1. All room dimensions are in metric and measured to structural elements, and exclude wall finishes and construction tolerances. 2. All dimensions have been provided by our consultant architects. 3. All materials, dimensions, drawings, features and amenities, are approximate at the time of printing. 4. Actual area may vary from stated area. 5. Drawings are not to scale E&OE. 6. The developer reserves the right to make revisions to the floor plans and any features, materials, dimensions, drawings, and amenities mentioned on this plan and in the brochure without notice. 7. Unit plans may exist in mirrored version.

# Sidr Residences 1 - unit plans

سدر ريزيدنسز  
SIDR RESIDENCES

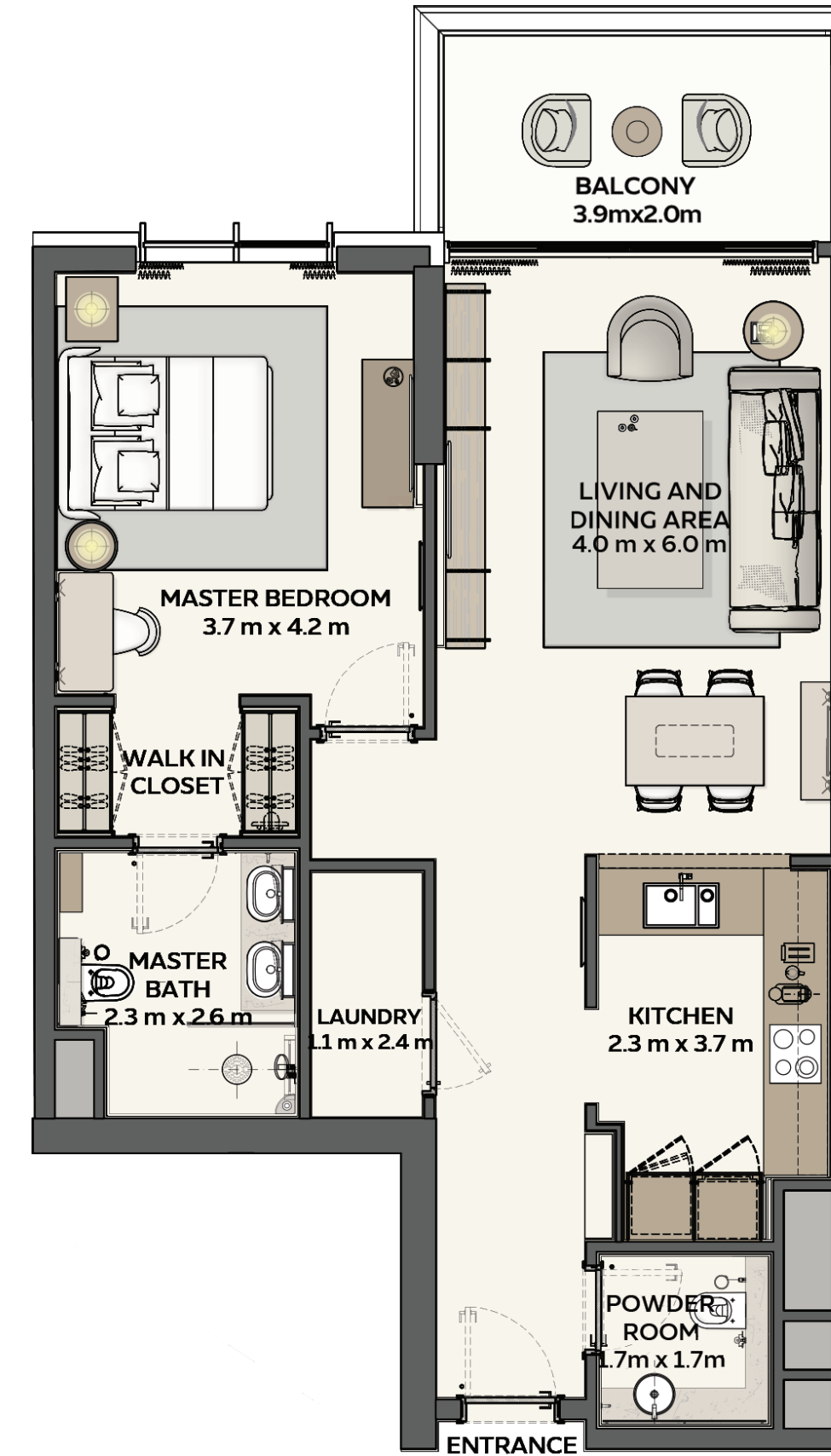


## 1 BEDROOM TYPE 1

Net Area starting from:  
78.74 sqm / 847.55 sqft

Balcony Area starting from:  
12.65 sqm / 136.16 sqft

Total Area starting from:  
91.39 sqm / 983.71 sqft



## 1 BEDROOM TYPE 2

Net Area starting from:  
83.30 sqm / 896.63 sqft

Balcony Area starting from:  
8.86 sqm / 95.37 sqft

Total Area starting from:  
92.16 sqm / 992.00 sqft

DEVELOPED BY



1. All room dimensions are in metric and measured to structural elements, and exclude wall finishes and construction tolerances. 2. All dimensions have been provided by our consultant architects. 3. All materials, dimensions, drawings, features and amenities, are approximate at the time of printing. 4. Actual area may vary from stated area. 5. Drawings are not to scale E&OE. 6. The developer reserves the right to make revisions to the floor plans and any features, materials, dimensions, drawings, and amenities mentioned on this plan and in the brochure without notice. 7. Unit plans may exist in mirrored version.

# Sidr Residences 1 - unit plans

سدر ريزيدنسز  
SIDR RESIDENCES



## 2 BEDROOM TYPE 1

**Net Area starting from:**  
118.70 sqm / 1277.68 sqft

**Balcony Area starting from:**  
9.28 sqm / 99.89 sqft

**Total Area starting from:**  
127.98 sqm / 1377.57 sqft

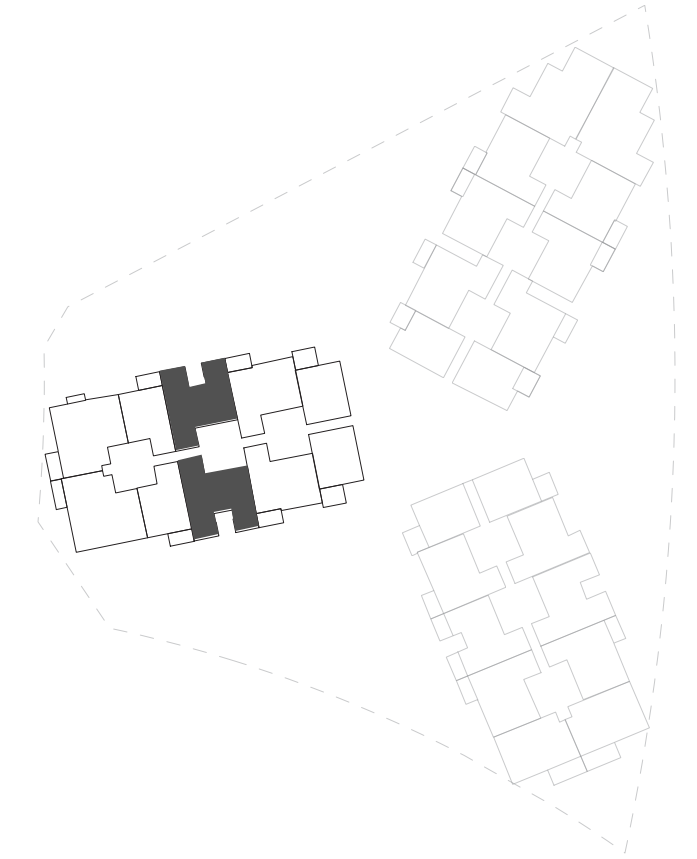
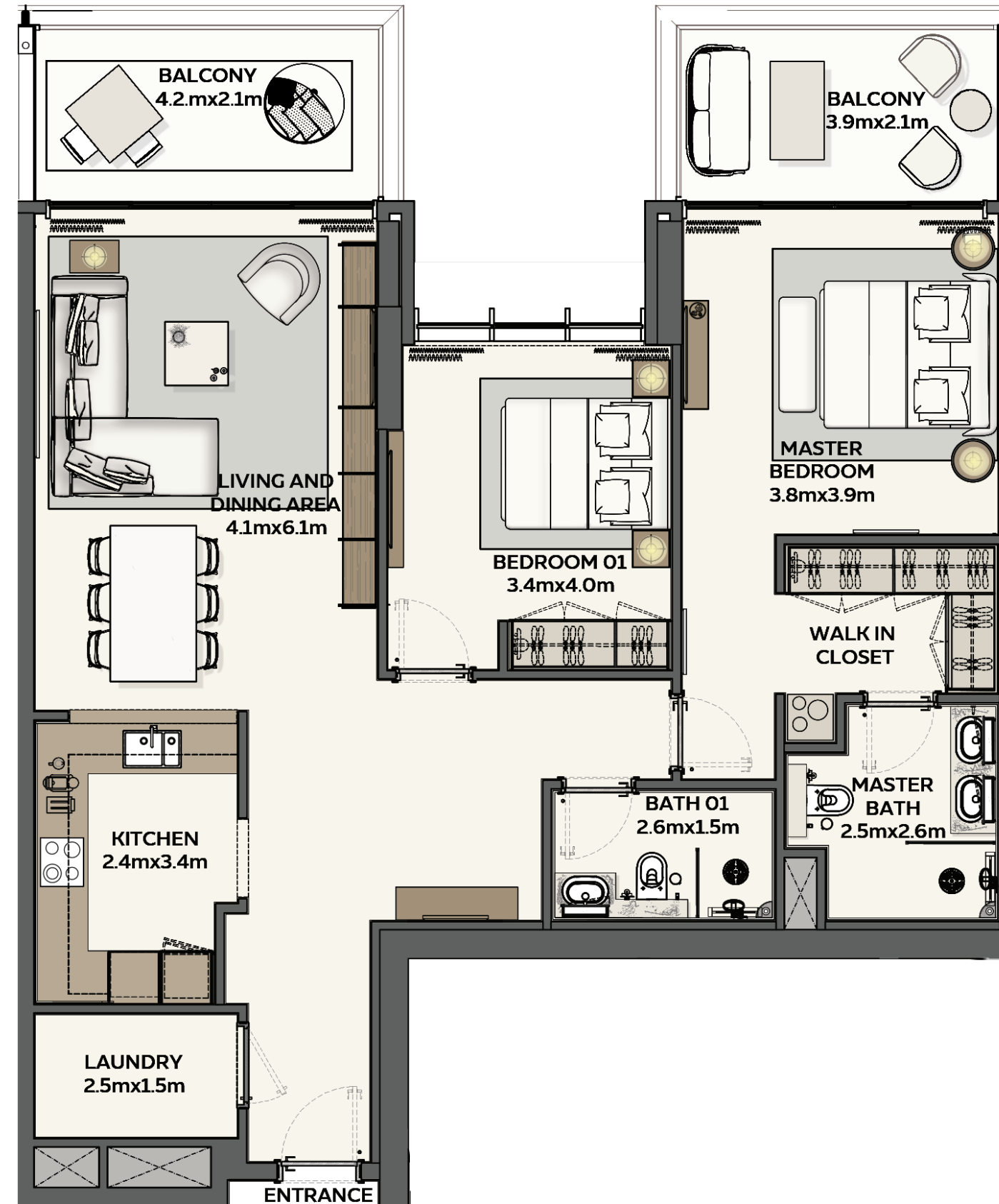
DEVELOPED BY



1. All room dimensions are in metric and measured to structural elements, and exclude wall finishes and construction tolerances. 2. All dimensions have been provided by our consultant architects. 3. All materials, dimensions, drawings, features and amenities, are approximate at the time of printing. 4. Actual area may vary from stated area. 5. Drawings are not to scale E&OE. 6. The developer reserves the right to make revisions to the floor plans and any features, materials, dimensions, drawings, and amenities mentioned on this plan and in the brochure without notice. 7. Unit plans may exist in mirrored version.

# Sidr Residences 1 - unit plans

سدر ريزيدنسز  
SIDR RESIDENCES



## 2 BEDROOM TYPE 2

Net Area starting from:  
114.26 sqm / 1229.88 sqft

Balcony Area starting from:  
18.19 sqm / 195.80 sqft

Total Area starting from:  
132.45 sqm / 1425.68 sqft

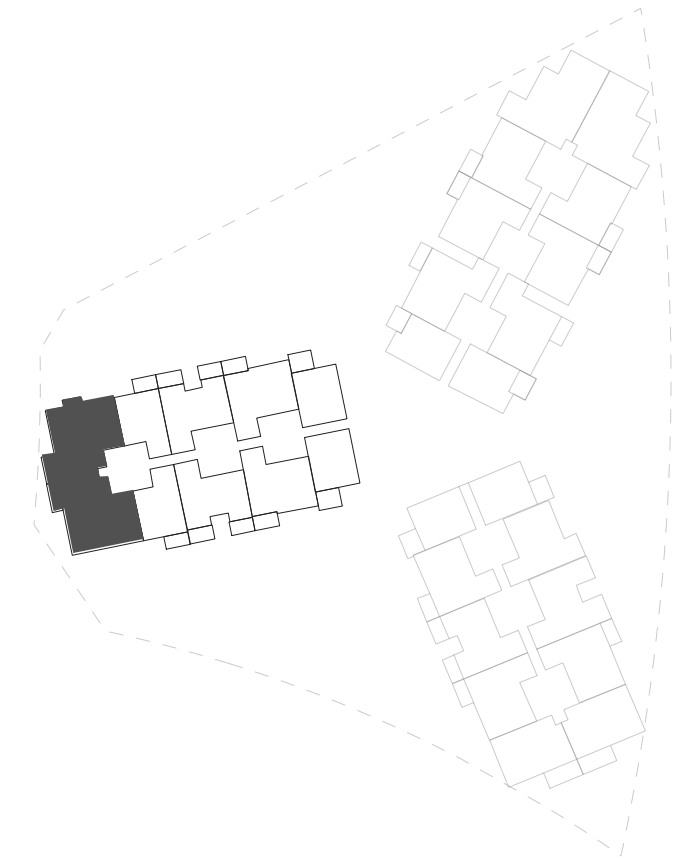
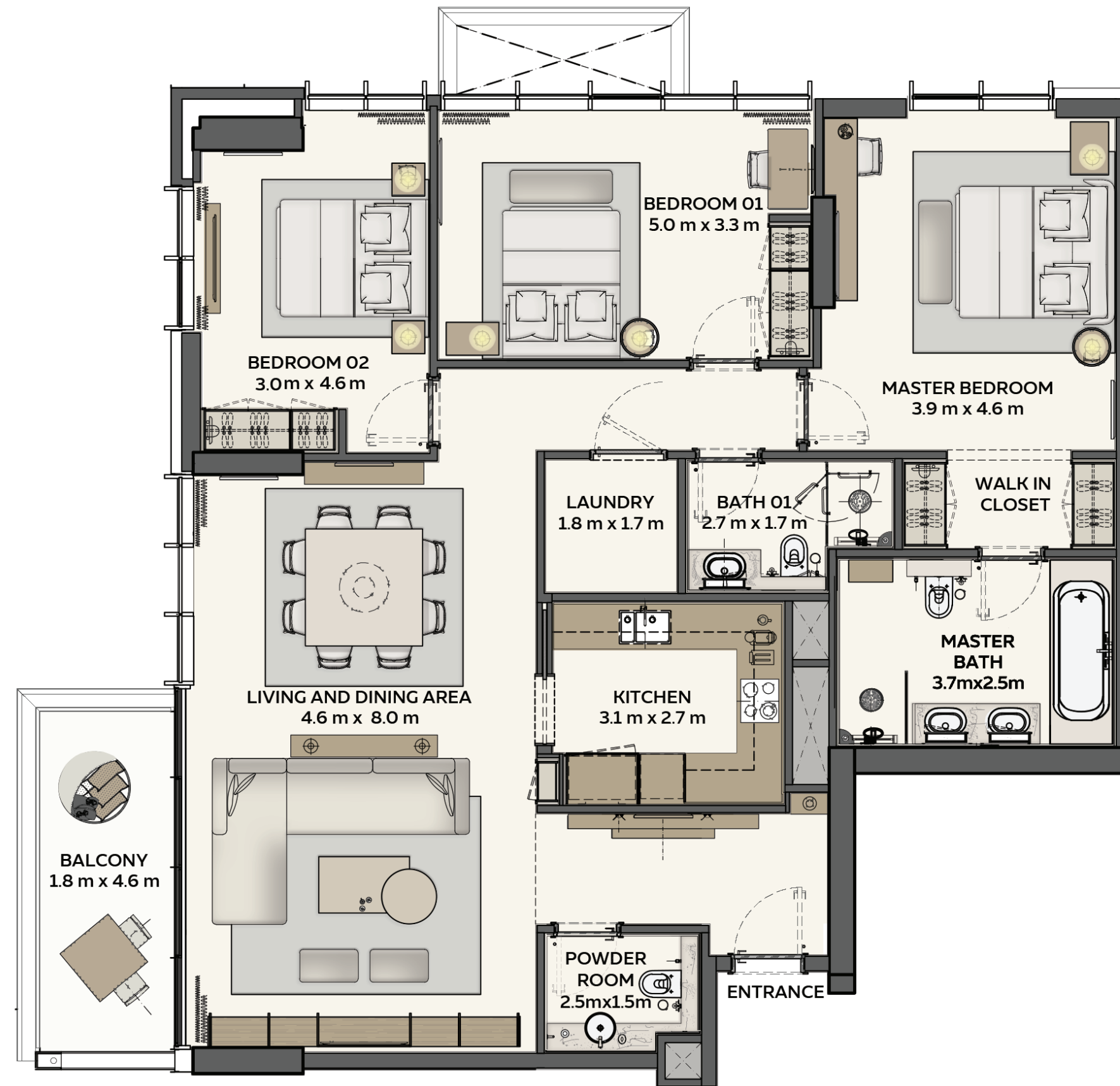
DEVELOPED BY



1. All room dimensions are in metric and measured to structural elements, and exclude wall finishes and construction tolerances. 2. All dimensions have been provided by our consultant architects. 3. All materials, dimensions, drawings, features and amenities, are approximate at the time of printing. 4. Actual area may vary from stated area. 5. Drawings are not to scale E&OE. 6. The developer reserves the right to make revisions to the floor plans and any features, materials, dimensions, drawings, and amenities mentioned on this plan and in the brochure without notice. 7. Unit plans may exist in mirrored version.

# Sidr Residences 1 - unit plans

سدر ريزيدنسز  
SIDR RESIDENCES



## 3 BEDROOM TYPE 2

**Net Area starting from:**  
148.26 sqm / 1595.86 sqft

**Balcony Area starting from:**  
9.22 sqm / 99.24 sqft

**Total Area starting from:**  
157.48 sqm / 1695.10 sqft

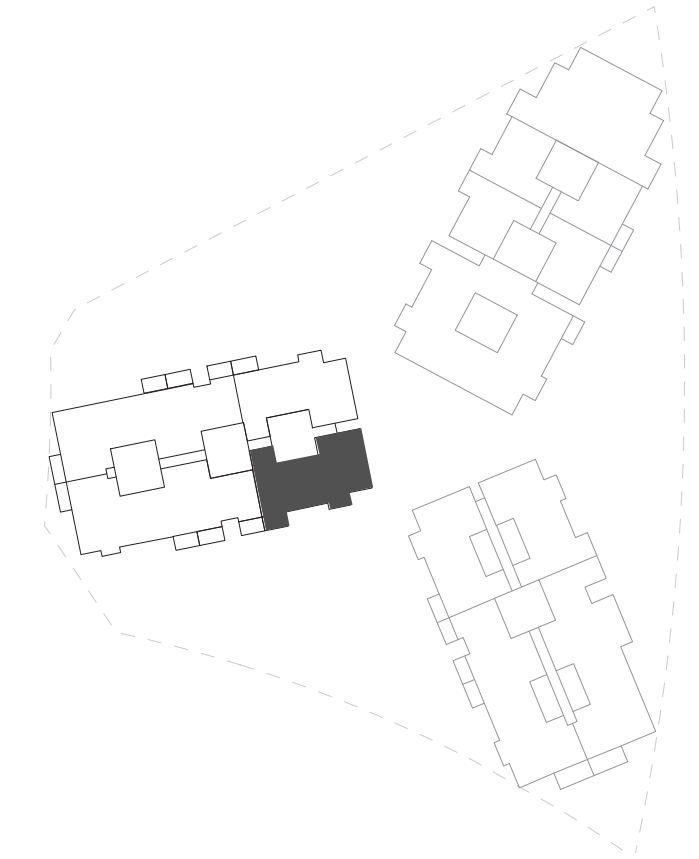
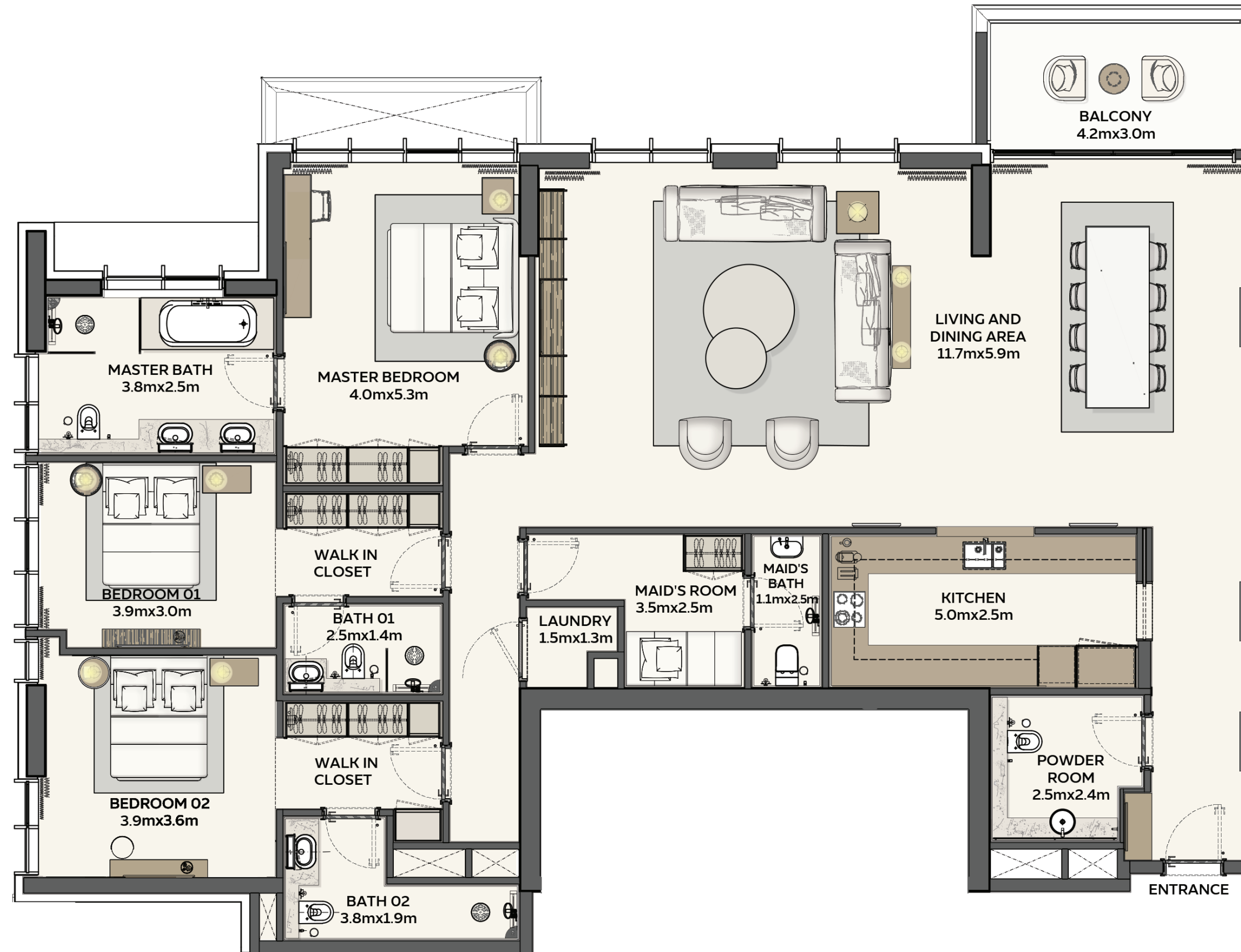
DEVELOPED BY



1. All room dimensions are in metric and measured to structural elements, and exclude wall finishes and construction tolerances. 2. All dimensions have been provided by our consultant architects. 3. All materials, dimensions, drawings, features and amenities, are approximate at the time of printing. 4. Actual area may vary from stated area. 5. Drawings are not to scale E&OE. 6. The developer reserves the right to make revisions to the floor plans and any features, materials, dimensions, drawings, and amenities mentioned on this plan and in the brochure without notice. 7. Unit plans may exist in mirrored version.

# Sidr Residences 1 - unit plans

سدر ريزيدنسز  
SIDR RESIDENCES



## 3 BEDROOM TYPE 3

Net Area starting from:  
213.02 sqm / 2292.93 sqft

Balcony Area starting from:  
9.28 sqm / 99.89 sqft

Total Area starting from:  
222.30 sqm / 2392.82 sqft

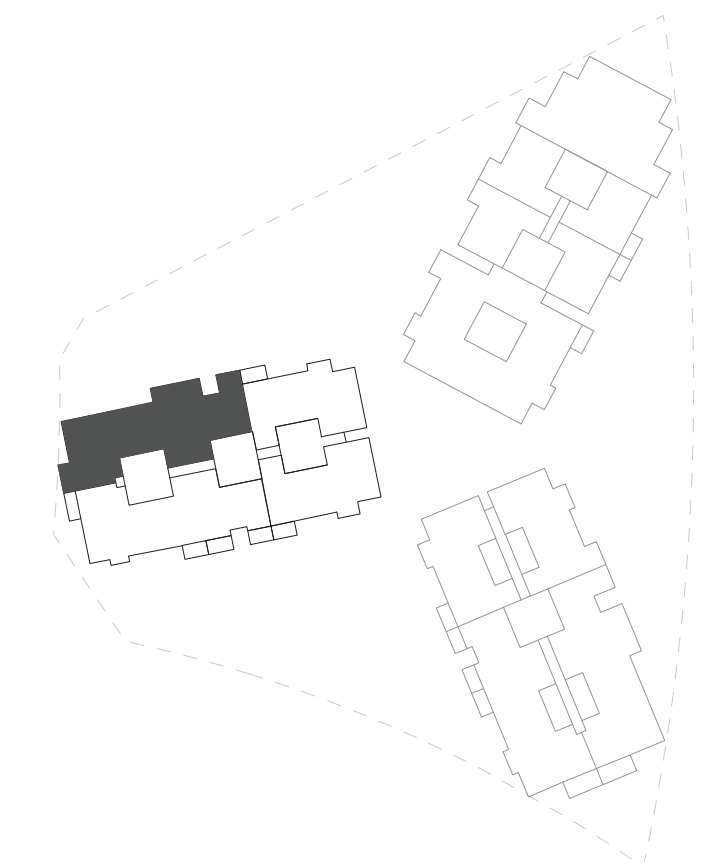
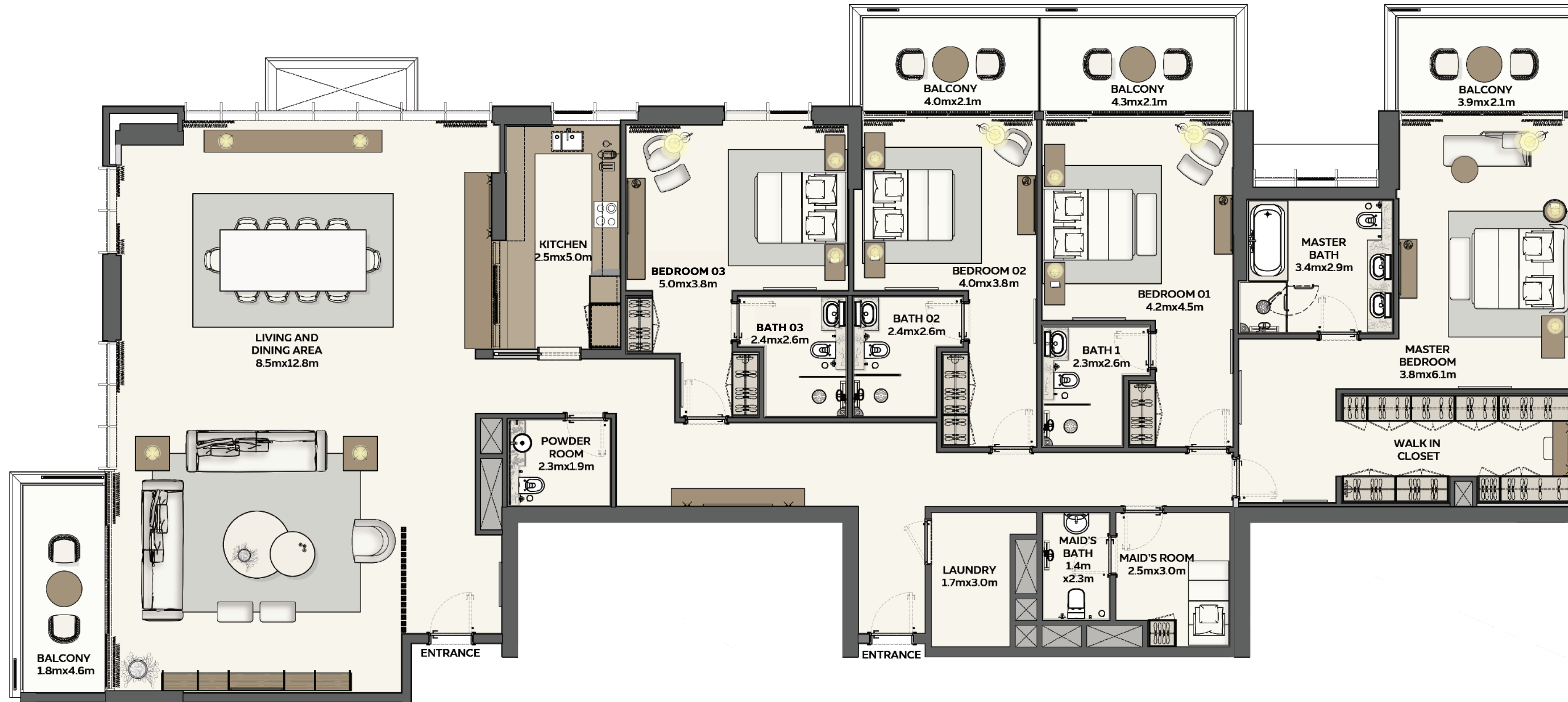
DEVELOPED BY



1. All room dimensions are in metric and measured to structural elements, and exclude wall finishes and construction tolerances. 2. All dimensions have been provided by our consultant architects. 3. All materials, dimensions, drawings, features and amenities, are approximate at the time of printing. 4. Actual area may vary from stated area. 5. Drawings are not to scale E&OE. 6. The developer reserves the right to make revisions to the floor plans and any features, materials, dimensions, drawings, and amenities mentioned on this plan and in the brochure without notice. 7. Unit plans may exist in mirrored version.

# Sidr Residences 1 - unit plans

سدر ريزيدنسز  
SIDR RESIDENCES



## 4 BEDROOM TYPE 1

Net Area starting from:  
346.92 sqm / 3734.22 sqft

Balcony Area starting from:  
36.19 sqm / 389.55 sqft

Total Area starting from:  
383.11 sqm / 4123.76 sqft