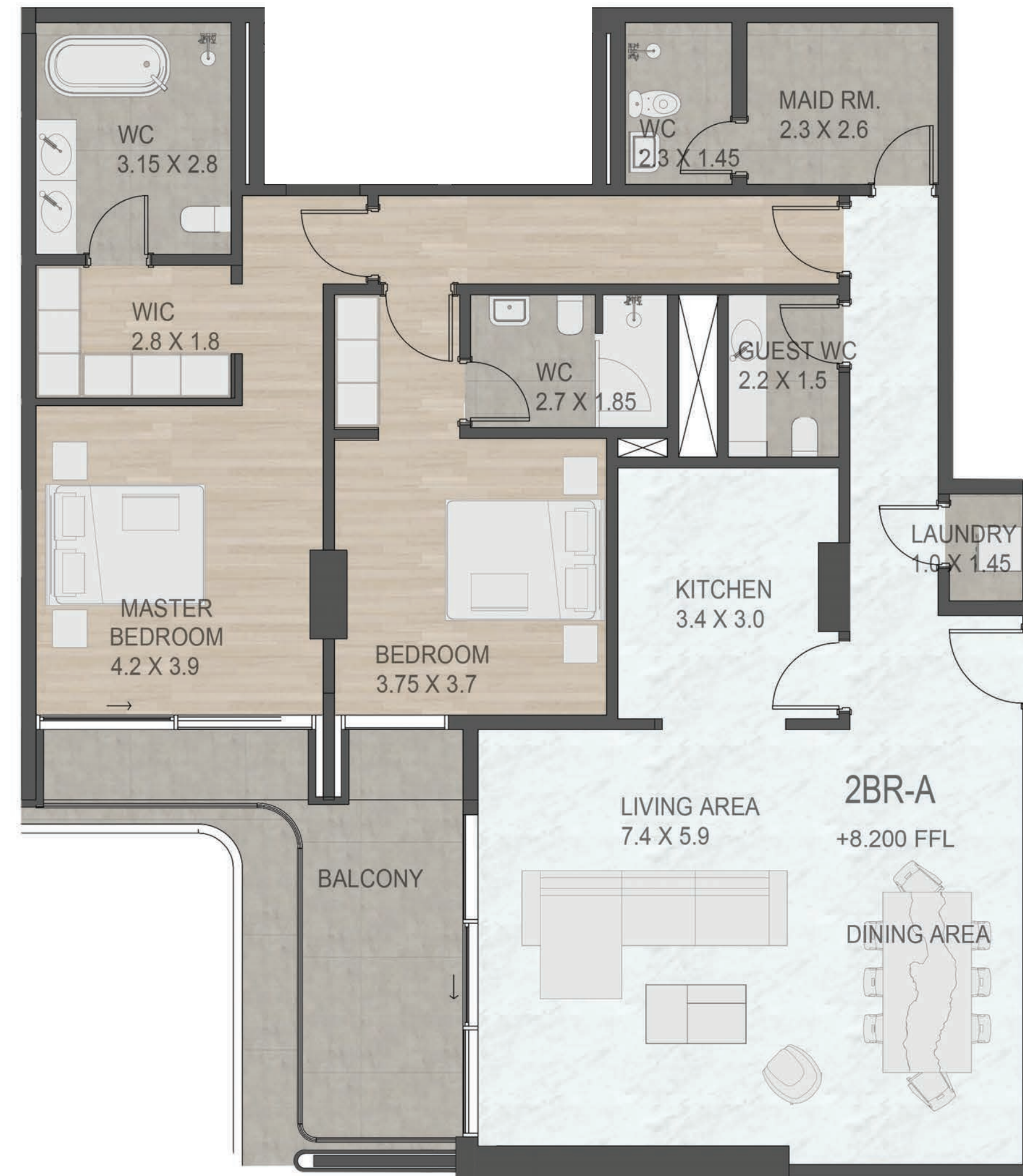


LUCE

2 BEDROOM

SUITE AREA	1,645 sqft
BALCONY AREA	180 sqft
TOTAL SELLABLE AREA	1,825 sqft

KEY PLAN (2ND - 7TH FLOOR)



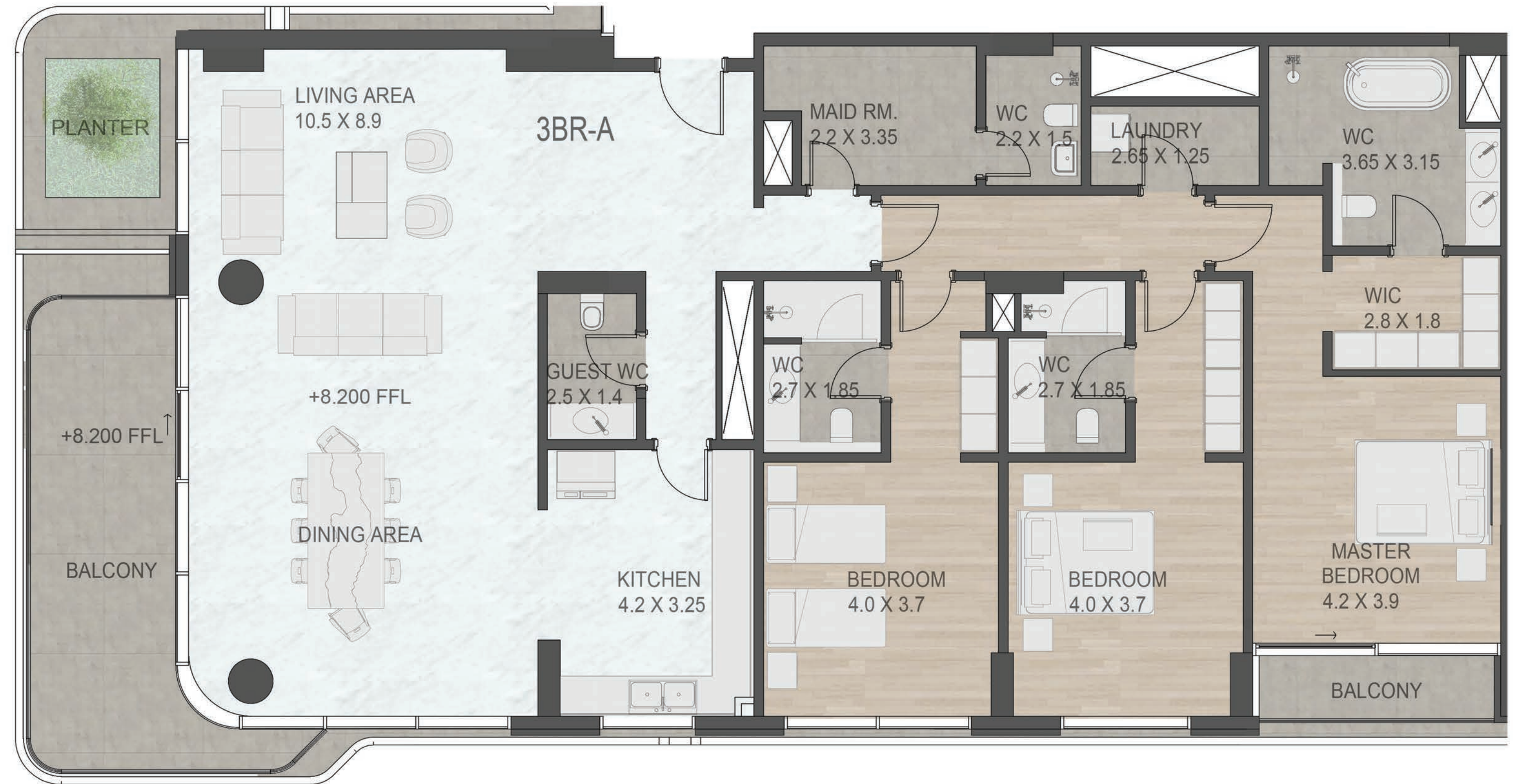
Numbers, square footage and floor plans are approximate. Final dimensions, square footage and floor plans may vary and are subject to change without notice. The developer reserves the right to make revisions. Built-Up Area is measured in accordance with Dubai Land Department standards. Plans, artistic renderings, landscaping and images are for illustrative purposes only and are subject to change without notice. Landscape shown is indicative and not provided by the developer. The pool shown is indicative and not provided by the developer unless selected as an option by the buyer

LUCE

3 BEDROOM TYPE A

SUITE AREA	2,298 sqft
BALCONY AREA	257 - 380 sqft
TOTAL SELLABLE AREA	2,555 - 2,677 sqft

KEY PLAN (2ND - 7TH FLOOR)



Numbers, square footage and floor plans are approximate. Final dimensions, square footage and floor plans may vary and are subject to change without notice. The developer reserves the right to make revisions. Built-Up Area is measured in accordance with Dubai Land Department standards. Plans, artistic renderings, landscaping and images are for illustrative purposes only and are subject to change without notice. Landscape shown is indicative and not provided by the developer. The pool shown is indicative and not provided by the developer unless selected as an option by the buyer

LUCE

3 BEDROOM TYPE B

SUITE AREA	2,296 sqft
BALCONY AREA	197 - 396 sqft
TOTAL SELLABLE AREA	2,492 - 2,692 sqft

KEY PLAN (2ND - 7TH FLOOR)



Numbers, square footage and floor plans are approximate. Final dimensions, square footage and floor plans may vary and are subject to change without notice. The developer reserves the right to make revisions. Built-Up Area is measured in accordance with Dubai Land Department standards. Plans, artistic renderings, landscaping and images are for illustrative purposes only and are subject to change without notice. Landscape shown is indicative and not provided by the developer. The pool shown is indicative and not provided by the developer unless selected as an option by the buyer

LUCE

3 BEDROOM TYPE C

SUITE AREA	2,138 - 2,142 sqft
BALCONY AREA	225 - 305 sqft
TOTAL SELLABLE AREA	2,365 - 2,443 sqft

KEY PLAN (2ND - 7TH FLOOR)



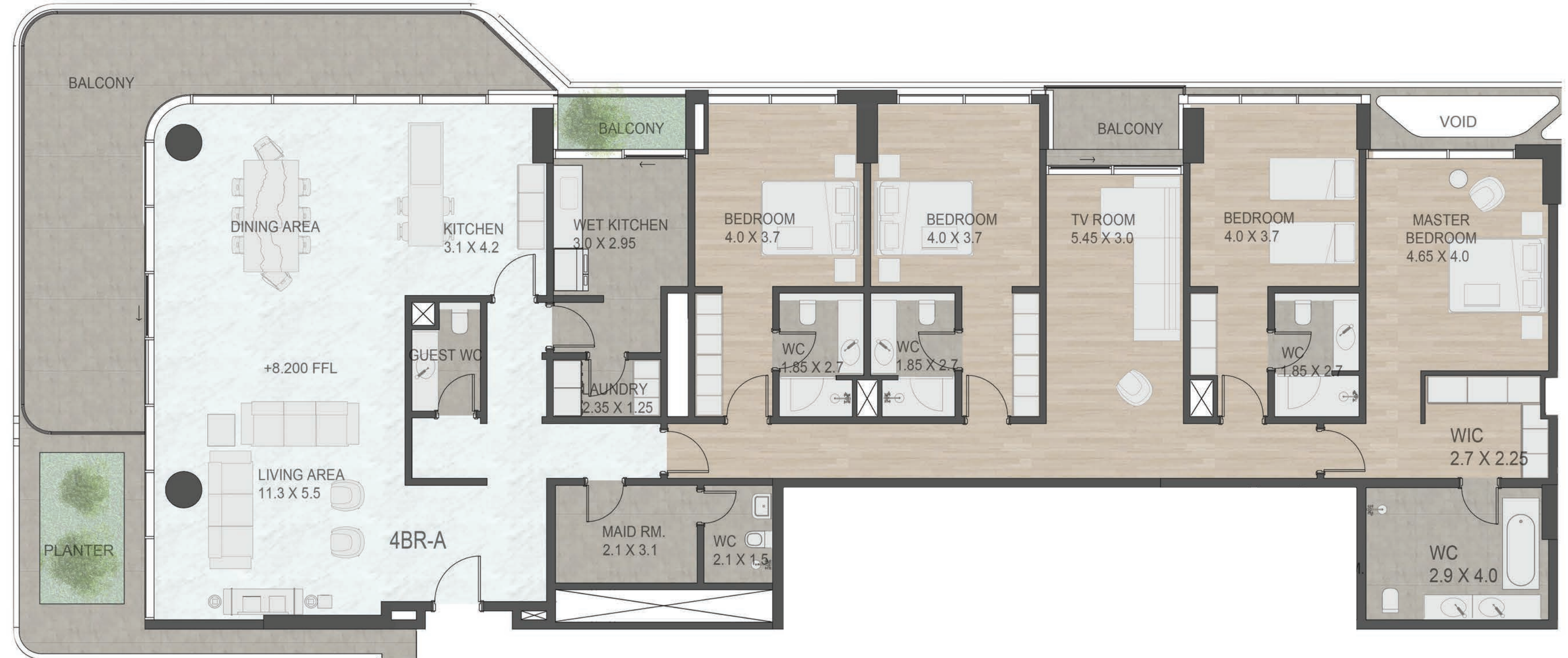
Numbers, square footage and floor plans are approximate. Final dimensions, square footage and floor plans may vary and are subject to change without notice. The developer reserves the right to make revisions. Built-Up Area is measured in accordance with Dubai Land Department standards. Plans, artistic renderings, landscaping and images are for illustrative purposes only and are subject to change without notice. Landscape shown is indicative and not provided by the developer. The pool shown is indicative and not provided by the developer unless selected as an option by the buyer

LUCE

4 BEDROOM

SUITE AREA	3,177 sqft
BALCONY AREA	379 - 531 sqft
TOTAL SELLABLE AREA	3,556 - 3,708 sqft

KEY PLAN (2ND - 7TH FLOOR)



Numbers, square footage and floor plans are approximate. Final dimensions, square footage and floor plans may vary and are subject to change without notice. The developer reserves the right to make revisions. Built-Up Area is measured in accordance with Dubai Land Department standards. Plans, artistic renderings, landscaping and images are for illustrative purposes only and are subject to change without notice. Landscape shown is indicative and not provided by the developer. The pool shown is indicative and not provided by the developer unless selected as an option by the buyer

LUCE

2 BEDROOM

SUITE AREA	1,894 sqft
BALCONY AREA	603 sqft
TOTAL SELLABLE AREA	2,497 sqft

KEY PLAN (8TH FLOOR)



Numbers, square footage and floor plans are approximate. Final dimensions, square footage and floor plans may vary and are subject to change without notice. The developer reserves the right to make revisions. Built-Up Area is measured in accordance with Dubai Land Department standards. Plans, artistic renderings, landscaping and images are for illustrative purposes only and are subject to change without notice. Landscape shown is indicative and not provided by the developer. The pool shown is indicative and not provided by the developer unless selected as an option by the buyer

LUCE

3 BEDROOM TYPE D

SUITE AREA	2,203 sqft
BALCONY AREA	485 sqft
TOTAL SELLABLE AREA	2,688 sqft

KEY PLAN (8TH FLOOR)



Numbers, square footage and floor plans are approximate. Final dimensions, square footage and floor plans may vary and are subject to change without notice. The developer reserves the right to make revisions. Built-Up Area is measured in accordance with Dubai Land Department standards. Plans, artistic renderings, landscaping and images are for illustrative purposes only and are subject to change without notice. Landscape shown is indicative and not provided by the developer. The pool shown is indicative and not provided by the developer unless selected as an option by the buyer

LUCE

4 BEDROOM TYPE C

SUITE AREA	3,615 sqft
BALCONY AREA	505 sqft
TOTAL SELLABLE AREA	4,117 sqft

KEY PLAN (8TH FLOOR)



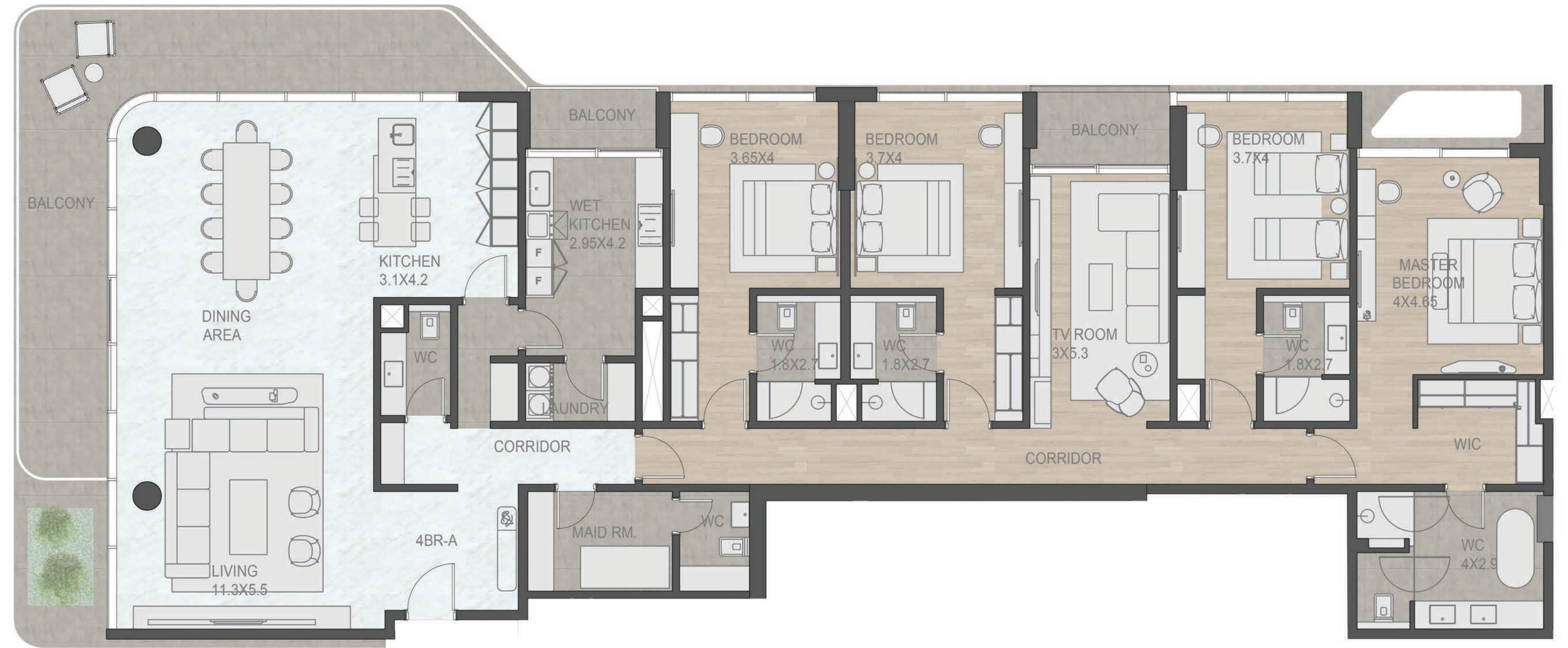
Numbers, square footage and floor plans are approximate. Final dimensions, square footage and floor plans may vary and are subject to change without notice. The developer reserves the right to make revisions. Built-Up Area is measured in accordance with Dubai Land Department standards. Plans, artistic renderings, landscaping and images are for illustrative purposes only and are subject to change without notice. Landscape shown is indicative and not provided by the developer. The pool shown is indicative and not provided by the developer unless selected as an option by the buyer

LUCE

4 BEDROOM TYPE A

SUITE AREA	3,179 sqft
BALCONY AREA	487 sqft
TOTAL SELLABLE AREA	3,666 sqft

KEY PLAN (8TH FLOOR)



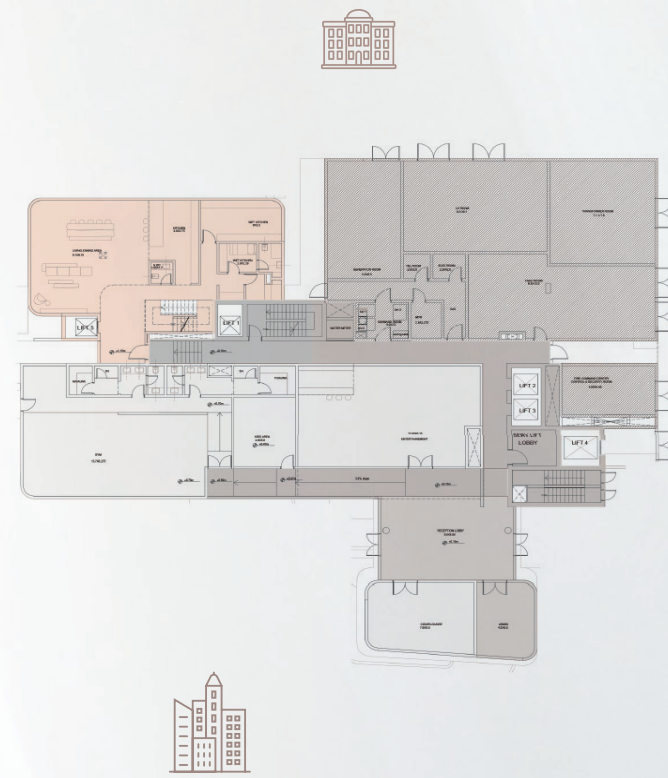
Numbers, square footage and floor plans are approximate. Final dimensions, square footage and floor plans may vary and are subject to change without notice. The developer reserves the right to make revisions. Built-Up Area is measured in accordance with Dubai Land Department standards. Plans, artistic renderings, landscaping and images are for illustrative purposes only and are subject to change without notice. Landscape shown is indicative and not provided by the developer. The pool shown is indicative and not provided by the developer unless selected as an option by the buyer

LUCE

G01 GROUND FLOOR

SUITE AREA	4,775 sqft
BALCONY AREA	3,412 sqft
TOTAL SELLABLE AREA	8,188 sqft

KEY PLAN (GROUND FLOOR)

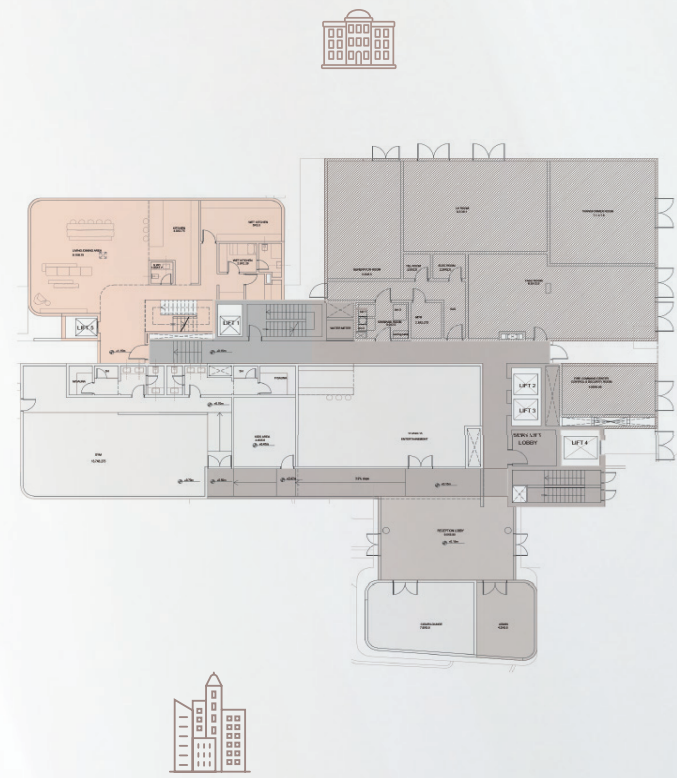


Numbers, square footage and floor plans are approximate. Final dimensions, square footage and floor plans may vary and are subject to change without notice. The developer reserves the right to make revisions. Built-Up Area is measured in accordance with Dubai Land Department standards. Plans, artistic renderings, landscaping and images are for illustrative purposes only and are subject to change without notice. Landscape shown is indicative and not provided by the developer. The pool shown is indicative and not provided by the developer unless selected as an option by the buyer

LUCE

G01
FIRST FLOOR

KEY PLAN



Numbers, square footage and floor plans are approximate. Final dimensions, square footage and floor plans may vary and are subject to change without notice. The developer reserves the right to make revisions. Built-Up Area is measured in accordance with Dubai Land Department standards. Plans, artistic renderings, landscaping and images are for illustrative purposes only and are subject to change without notice. Landscape shown is indicative and not provided by the developer. The pool shown is indicative and not provided by the developer unless selected as an option by the buyer

LUCE

900
9TH FLOOR

SUITE AREA	4,749 sqft
BALCONY AREA	4,687 sqft
TOTAL SELLABLE AREA	9,436 sqft

KEY PLAN



Numbers, square footage and floor plans are approximate. Final dimensions, square footage and floor plans may vary and are subject to change without notice. The developer reserves the right to make revisions. Built-Up Area is measured in accordance with Dubai Land Department standards. Plans, artistic renderings, landscaping and images are for illustrative purposes only and are subject to change without notice. Landscape shown is indicative and not provided by the developer. The pool shown is indicative and not provided by the developer unless selected as an option by the buyer