

# The Reserve

THE MODERNIST – FRONT VIEW



The Modernist style collection is lavishly curated with stunning spaces to enjoy living. Expansive terraces, a vast master suite, large ensuite bedrooms, spacious gardens and parking for 4 cars offer the ultimate inspired lifestyle.

*The Reserve*

THE MODERNIST – BACK VIEW





The Mediterranean style natural stone façade complements the bright open spaces. An impressive double-height entry leads the way to premium marble flooring and finishes throughout. Expansive floor-to-ceiling windows infuse the Grand Villa with natural light.

*The Reserve*

THE MEDITERRANEAN – BACK VIEW



FLOORPLAN

# The Reserve Grand Villa (Type A)

**Amenities**

- Private home elevator
- 4 parking spaces
- Garage Door
- Outdoor Majlis
- His & Hers walk-in closets
- 3 staff rooms
- Fitted laundry room

**4 Zen Suite options:**

- Heal
- Entertain
- Work
- Exercise

Internal Area	696 sq.m	7,487 sq.ft
Garage	95 sq.m	1,020 sq.ft
Balcony & Terrace	36 sq.m	385 sq.ft
<b>Total Area</b>	<b>827 sq.m</b>	<b>8,891 sq.ft</b>
Sky Suite Terrace Area	59 sq.m	631 sq.ft
<b>Gross Area</b>	<b>885 sq.m</b>	<b>9,522 sq.ft</b>

**Ground Floor**

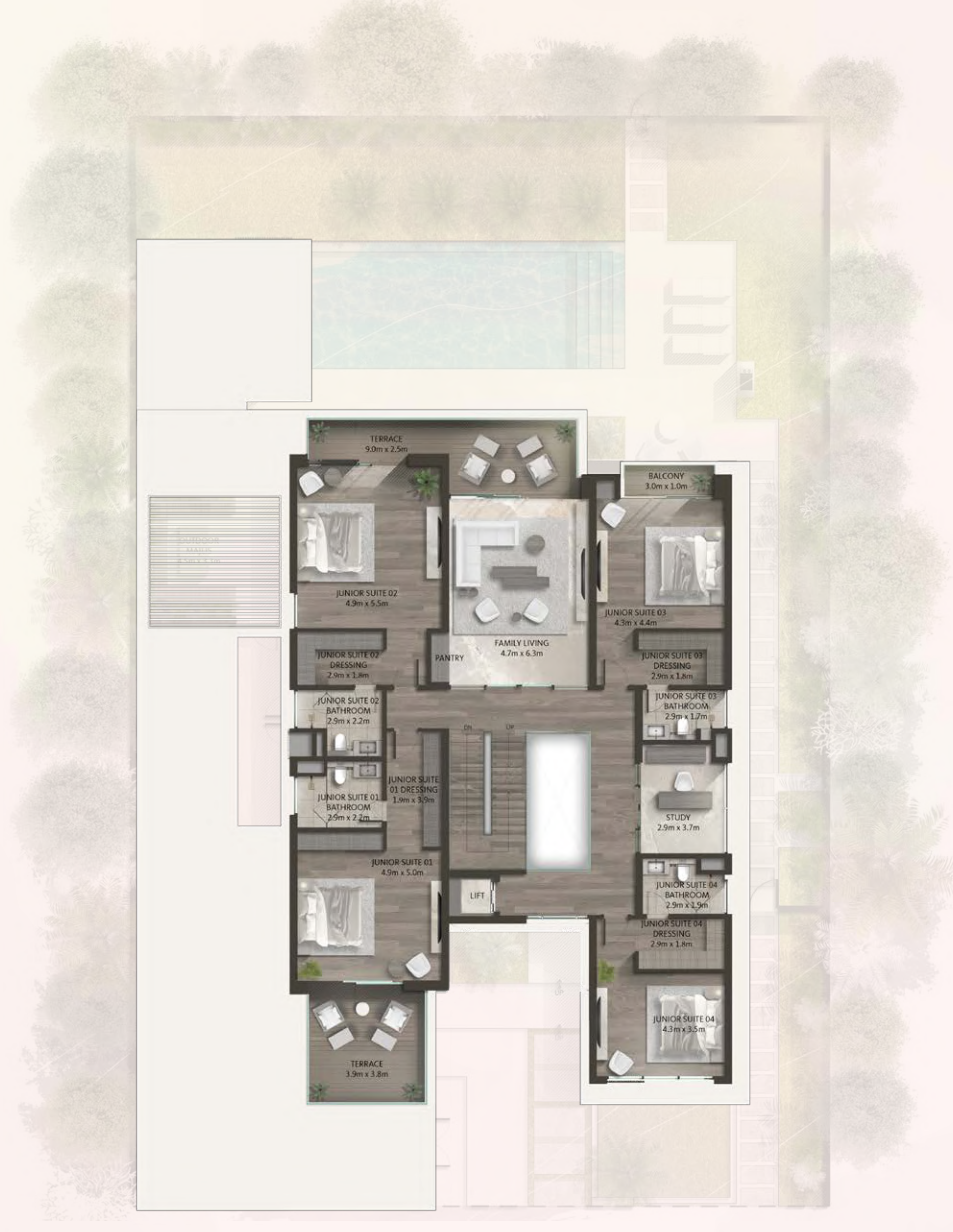
Total Area 400 sq.m / 4,303 sq.ft

**First Floor**

Total Area 284 sq.m / 3,060 sq.ft

**Penthouse**

Total Area 201 sq.m / 2,159 sq.ft



Disclaimer: The plans, drawings, images, dimensions, area and all information provided herein are indicative, provided for illustrative purposes.

FLOORPLAN

# The Reserve Grand Villa (Type B)

**Amenities**

- Private home elevator
- 4 parking spaces
- Garage Door
- Outdoor Majlis
- His & Hers walk-in closets
- 3 staff rooms
- Fitted laundry room

**4 Zen Suite options:**

- Heal
- Entertain
- Work
- Exercise

Internal Area	696 sq.m	7,487 sq.ft
Garage	95 sq.m	1,020 sq.ft
Balcony & Terrace	36 sq.m	385 sq.ft
<b>Total Area</b>	<b>827 sq.m</b>	<b>8,891 sq.ft</b>
Sky Suite Terrace Area	59 sq.m	631 sq.ft
<b>Gross Area</b>	<b>885 sq.m</b>	<b>9,522 sq.ft</b>

**Ground Floor**

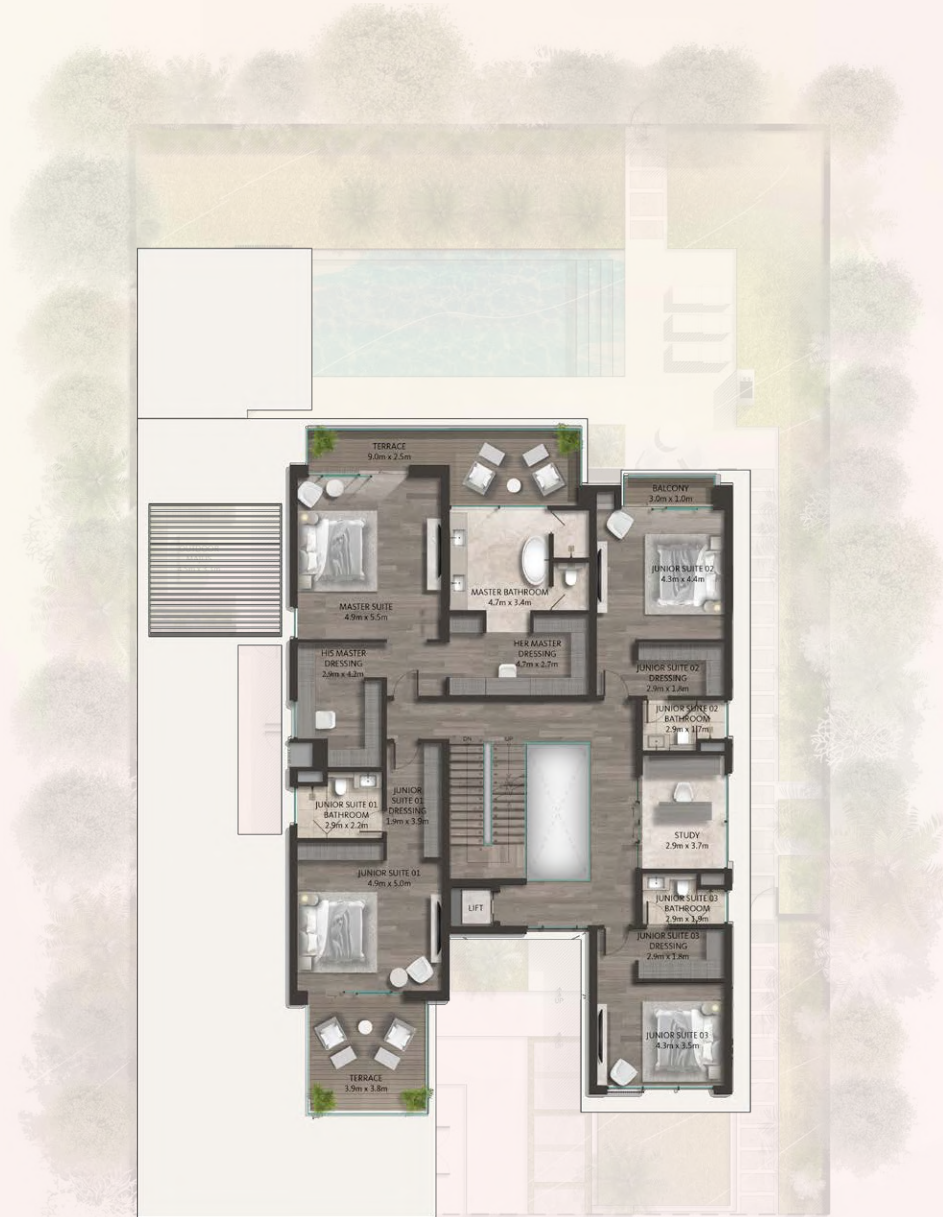
Total Area 400 sq.m / 4,303 sq.ft

**First Floor**

Total Area 284 sq.m / 3,060 sq.ft

**Penthouse**

Total Area 201 sq.m / 2,159 sq.ft



Disclaimer: The plans, drawings, images, dimensions, area and all information provided herein are indicative, provided for illustrative purposes.

*The Retreat*  
Grand Villa

# The Retreat

THE MODERNIST – FRONT VIEW



The Modernist style incorporates a rich textured façade which makes a statement from the very first glance. Premium marble and wooden flooring, stunning European manufactured kitchens and superb finishes throughout offer the finest in living.

*The Retreat*

THE MODERNIST - BACK VIEW



# The Retreat

THE MEDITERRANEAN – FRONT VIEW



The Mediterranean style collection of The Retreat features expansive master suites filled with natural light and His and Hers walk-in wardrobes. All bedrooms include stylish ensuites, modern European kitchens and vast outside terracing complemented by large garages.

*The Retreat*

THE MEDITERRANEAN – BACK VIEW



FLOORPLAN

# The Retreat Grand Villa (Type A)

**Amenities**

- Private home elevator
- 3 parking spaces
- Garage Door
- Outdoor Majlis
- His & Hers walk-in closets
- 2 staff rooms
- Fitted laundry/utility room

**4 Zen Suite options:**

- Heal
- Entertain
- Work
- Exercise

Internal Area	584 sq.m	6,288 sq.ft
Garage	70 sq.m	751 sq.ft
Balcony & Terrace	44 sq.m	470 sq.ft
<b>Total Area</b>	<b>698 sq.m</b>	<b>7,509 sq.ft</b>
Sky Suite Terrace Area	59 sq.m	639 sq.ft
<b>Gross Area</b>	<b>757 sq.m</b>	<b>8,149 sq.ft</b>

**Ground Floor**

Total Area 345 sq.m / 3,712 sq.ft

**First Floor**

Total Area 249 sq.m / 2,679 sq.ft

**Penthouse**

Total Area 163 sq.m / 1,757 sq.ft



Disclaimer: The plans, drawings, images, dimensions, area and all information provided herein are indicative, provided for illustrative purposes.

FLOORPLAN

# The Retreat Grand Villa (Type B)

**Amenities**

- Private home elevator
- 3 parking spaces
- Garage Door
- Outdoor Majlis
- His & Hers walk-in closets
- 2 staff rooms
- Fitted laundry/utility room

**4 Zen Suite options:**

- Heal
- Entertain
- Work
- Exercise

Internal Area	584 sq.m	6,288 sq.ft
Garage	70 sq.m	751 sq.ft
Balcony & Terrace	44 sq.m	470 sq.ft
<b>Total Area</b>	<b>698 sq.m</b>	<b>7,509 sq.ft</b>
Sky Suite Terrace Area	59 sq.m	639 sq.ft
<b>Gross Area</b>	<b>757 sq.m</b>	<b>8,149 sq.ft</b>

**Ground Floor**

Total Area 345 sq.m / 3,712 sq.ft

**First Floor**

Total Area 249 sq.m / 2,679 sq.ft

**Penthouse**

Total Area 163 sq.m / 1,757 sq.ft



Disclaimer: The plans, drawings, images, dimensions, area and all information provided herein are indicative, provided for illustrative purposes.

*The Haven*  
Grand Villa

# The Haven

THE MODERNIST - FRONT VIEW



The Modernist style offer an impressive double-height entry, a large top floor terrace, an expansive master suite with His and Hers walk-in wardrobes and a large garden.

*The Haven*

THE MODERNIST - BACK VIEW



# The Haven

THE MEDITERRANEAN – FRONT VIEW



The Mediterranean style offer stunning facades which reflect the bright open spaces and exquisite interiors of these 3 storey Grand Villas. The unique Rooftop suites and terraces are complemented by spacious bedrooms, all with ensuites and an impressive master bedroom suite.

*The Haven*

THE MEDITERRANEAN – BACK VIEW



FLOORPLAN

# The Haven Grand Villa (Type A)

**Amenities**

- Private home elevator
- 3 parking spaces
- Garage Door
- Outdoor Majlis
- His & Hers walk-in closets
- 2 staff rooms
- Fitted laundry area

**4 Zen Suite options:**

- Heal
- Entertain
- Work
- Exercise

Internal Area	413 sq.m	4,451 sq.ft
Garage	70 sq.m	756 sq.ft
Balcony & Terrace	17 sq.m	188 sq.ft
<b>Total Area</b>	<b>500 sq.m</b>	<b>5,394 sq.ft</b>
Sky Suite Terrace Area	40 sq.m	431 sq.ft
<b>Gross Area</b>	<b>541 sq.m</b>	<b>5,825 sq.ft</b>

**Ground Floor**

Total Area 255 sq.m / 2,749 sq.ft

**First Floor**

Total Area 168 sq.m / 1,811 sq.ft

**Penthouse**

Total Area 117 sq.m / 1,264 sq.ft



Disclaimer: The plans, drawings, images, dimensions, area and all information provided herein are indicative, provided for illustrative purposes.

FLOORPLAN

# The Haven Grand Villa (Type B)

**Amenities**

- Private home elevator
- 3 parking spaces
- Garage Door
- Outdoor Majlis
- His & Hers walk-in closets
- 2 staff rooms
- Fitted laundry area

**4 Zen Suite options:**

- Heal
- Entertain
- Work
- Exercise

Internal Area	413 sq.m	4,451 sq.ft
Garage	70 sq.m	756 sq.ft
Balcony & Terrace	17 sq.m	188 sq.ft
<b>Total Area</b>	<b>500 sq.m</b>	<b>5,394 sq.ft</b>
Sky Suite Terrace Area	40 sq.m	431 sq.ft
<b>Gross Area</b>	<b>541 sq.m</b>	<b>5,825 sq.ft</b>

**Ground Floor**

Total Area 255 sq.m / 2,749 sq.ft

**First Floor**

Total Area 168 sq.m / 1,811 sq.ft

**Penthouse**

Total Area 117 sq.m / 1,264 sq.ft



Disclaimer: The plans, drawings, images, dimensions, area and all information provided herein are indicative, provided for illustrative purposes.