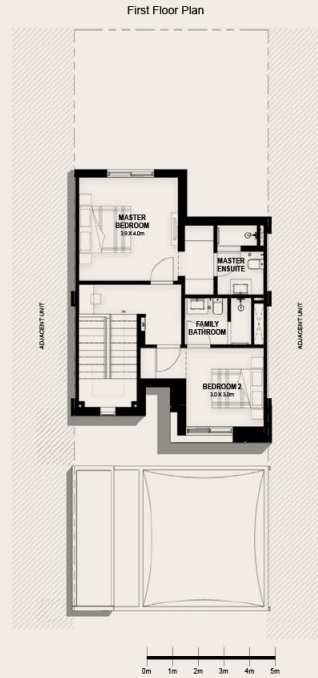
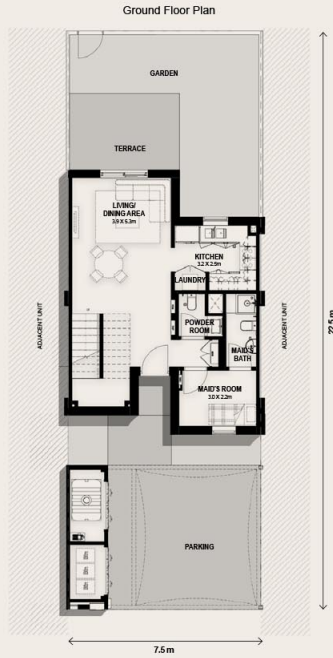


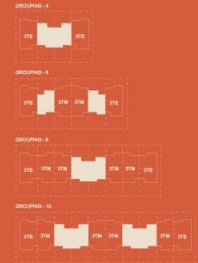
Noya at Yas Island - Townhouse

NOYA YAS ISLAND



TOWNHOUSE
2 BED
MID UNIT

Key Plan

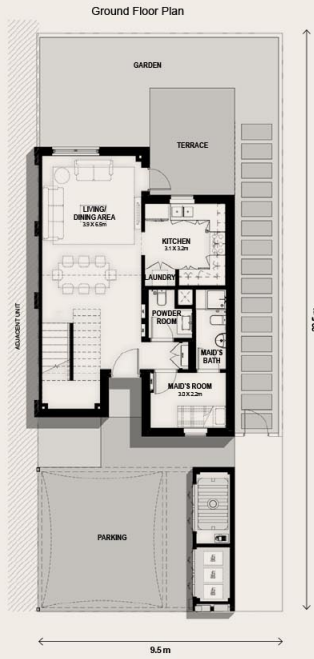


AREA: **124 SQM**

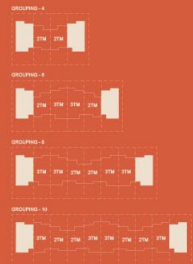
BEDROOMS: **2**

Note that this floor plan was produced prior to the completion of construction and is indicative only and not to scale. Changes may be made during the development and areas, fittings, finishes and specifications are subject to change without notice in accordance with the provision of the contract of sale. The furniture depicted is not included with any sale and should not be taken to indicate the final positions of power points, TV connections and the like. Prospective purchasers must rely on their own enquiries. Bulkheads necessary for services and structure are not depicted.

TOWNHOUSE
3 BED
END UNIT



Key Plan



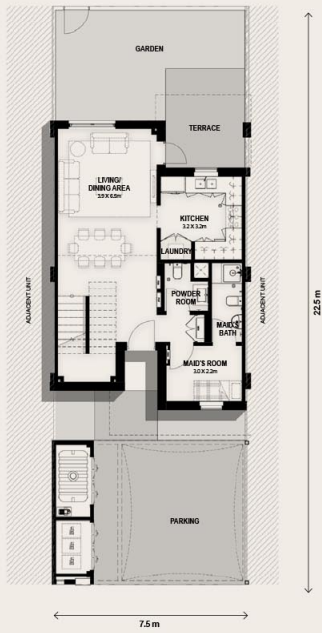
AREA: **166 SQM**

BEDROOMS: **3**

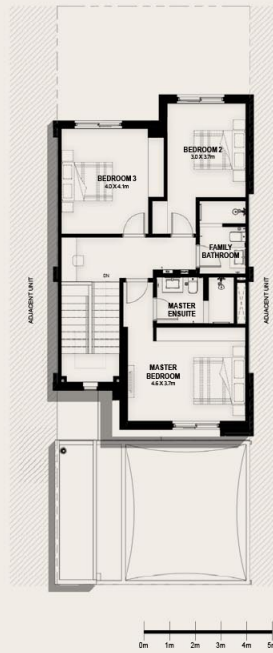
Note that this floor plan was produced prior to the completion of construction and is indicative only and not to scale. Changes may be made during the development and areas, fittings, finishes and specifications are subject to change without notice in accordance with the provision of the contract of sale. The furniture depicted is not included with any sale and should not be taken to indicate the final positions of power points, TV connections and the like. Prospective purchasers must rely on their own enquiries. Bulkheads necessary for services and structure are not depicted.

TOWNHOUSE
3 BED
MID UNIT

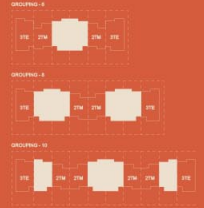
Ground Floor Plan



First Floor Plan



Key Plan



Note that this floor plan was produced prior to the completion of construction and is indicative only and not to scale. Changes may be made during the development and areas, fittings, finishes and specifications are subject to change without notice in accordance with the provision of the contract of sale. The furniture depicted is not included with any sale and should not be taken to indicate the final positions of power points, TV connections and the like. Prospective purchasers must rely on their own enquiries. Bulkheads necessary for services and structure are not depicted.

AREA: **163 SQM**

BEDROOMS: **3**



Note that this floor plan was produced prior to the completion of construction and is indicative only and not to scale. Changes may be made during the development and areas, fittings, finishes and specifications are subject to change without notice in accordance with the provision of the contract of sale. The furniture depicted is not included with any sale and should not be taken to indicate the final positions of power points, TV connections and the like. Prospective purchasers must rely on their own enquiries. Bulkheads necessary for services and structure are not depicted.

AREA: 210 SQM

BEDROOMS: 4

CONTACT US



Call Us [+971 4 248 3400](tel:+97142483400)



WhatsApp [+971 55 162 3236](https://wa.me/971551623236)

TANAMI
PROPERTIES