



OASIS TWO RESIDENCES

Reportage Properties LLC.

Masdar City

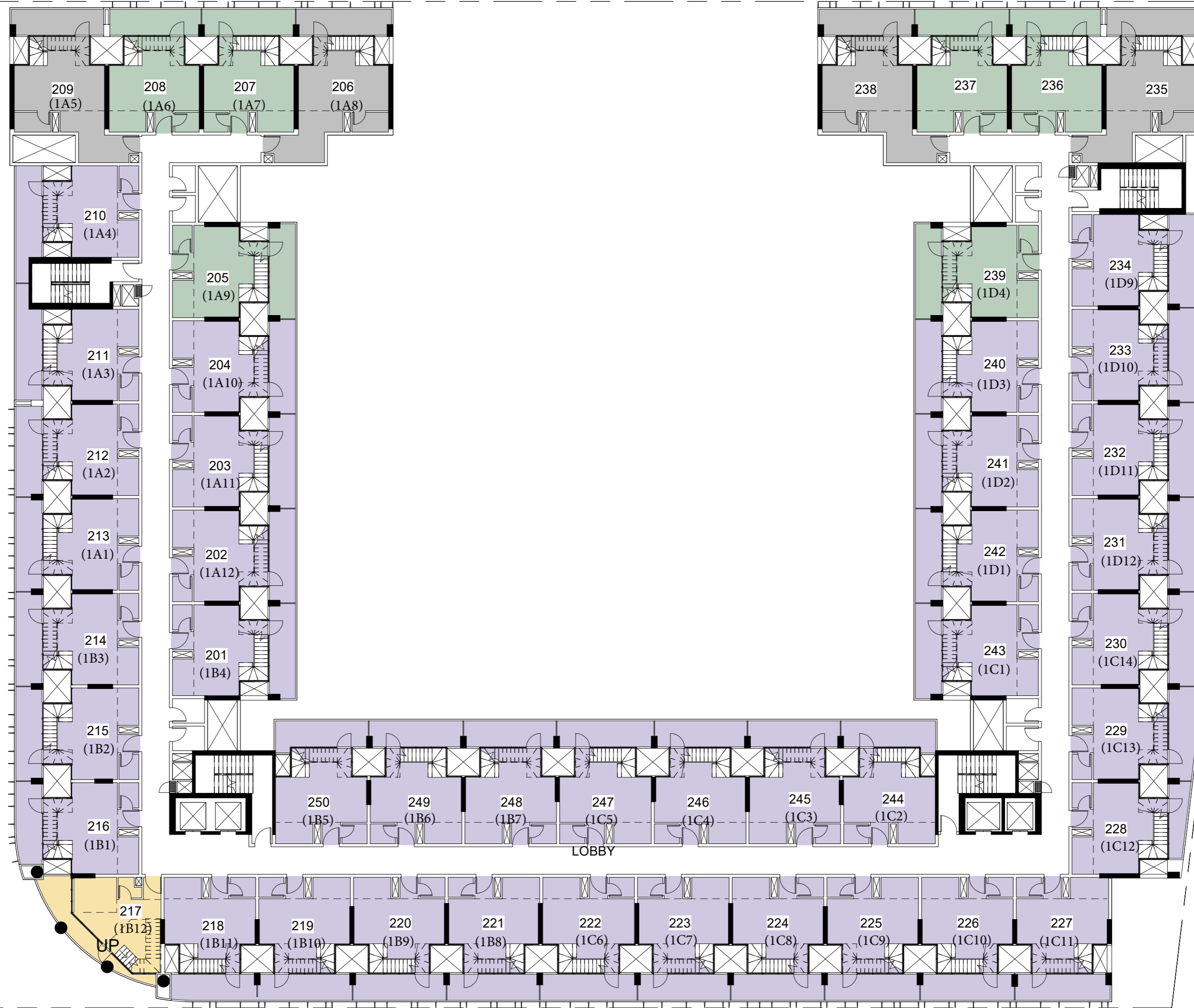
FIRST FLOOR



Unit Types

- 2 BED DUPLEX DELUXE
- 2 BED DUPLEX DELUXE
- 2 BED DUPLEX
- 2 BED DUPLEX

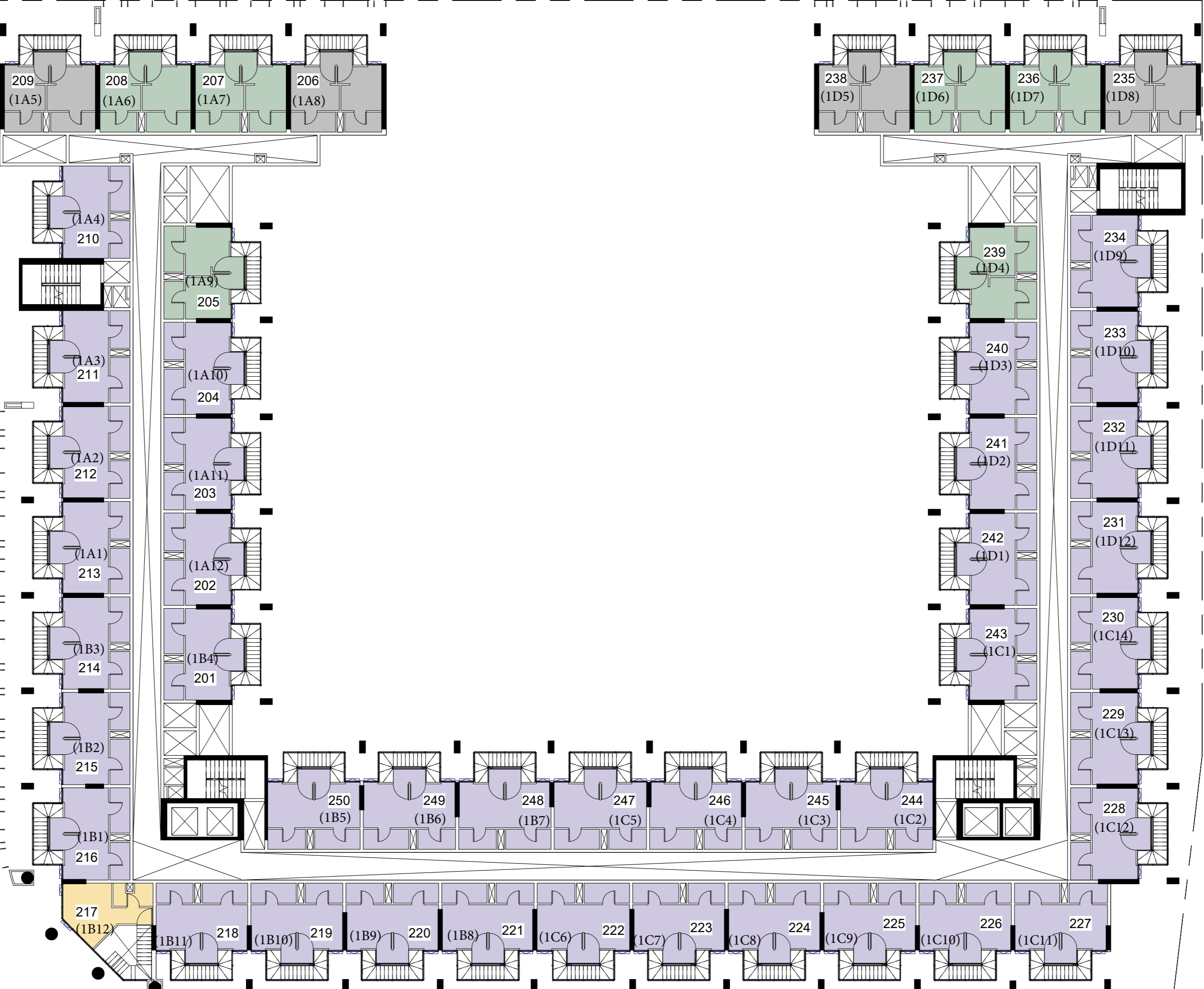
SECOND FLOOR



Unit Types

- 1 BED DUPLEX
- 2 BED DUPLEX DELUXE
- 2 BED DUPLEX
- 2 BED DUPLEX

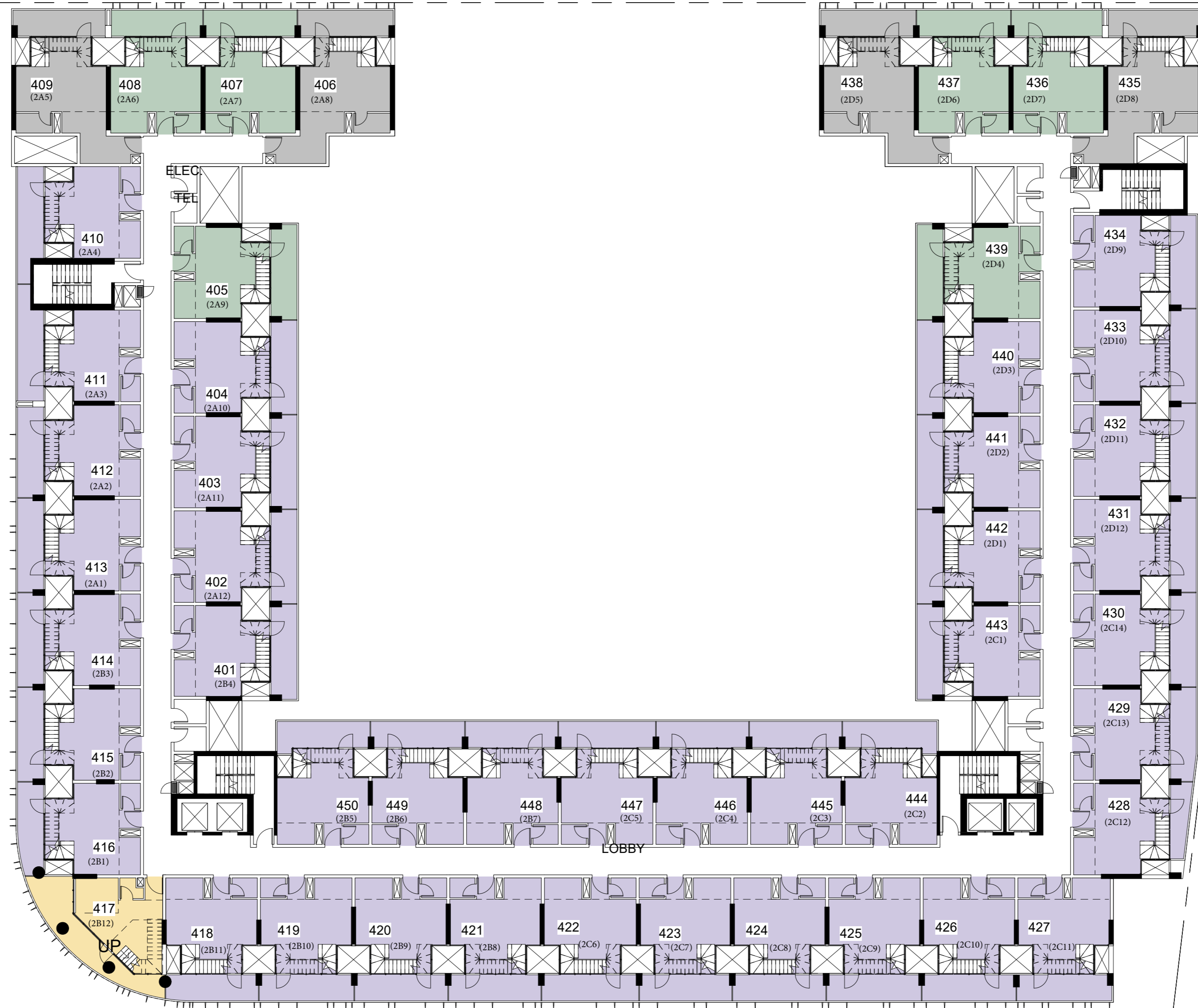
THIRD FLOOR



Unit Types

- 1 BED DUPLEX
- 2 BED DUPLEX DELUXE
- 2 BED DUPLEX
- 2 BED DUPLEX

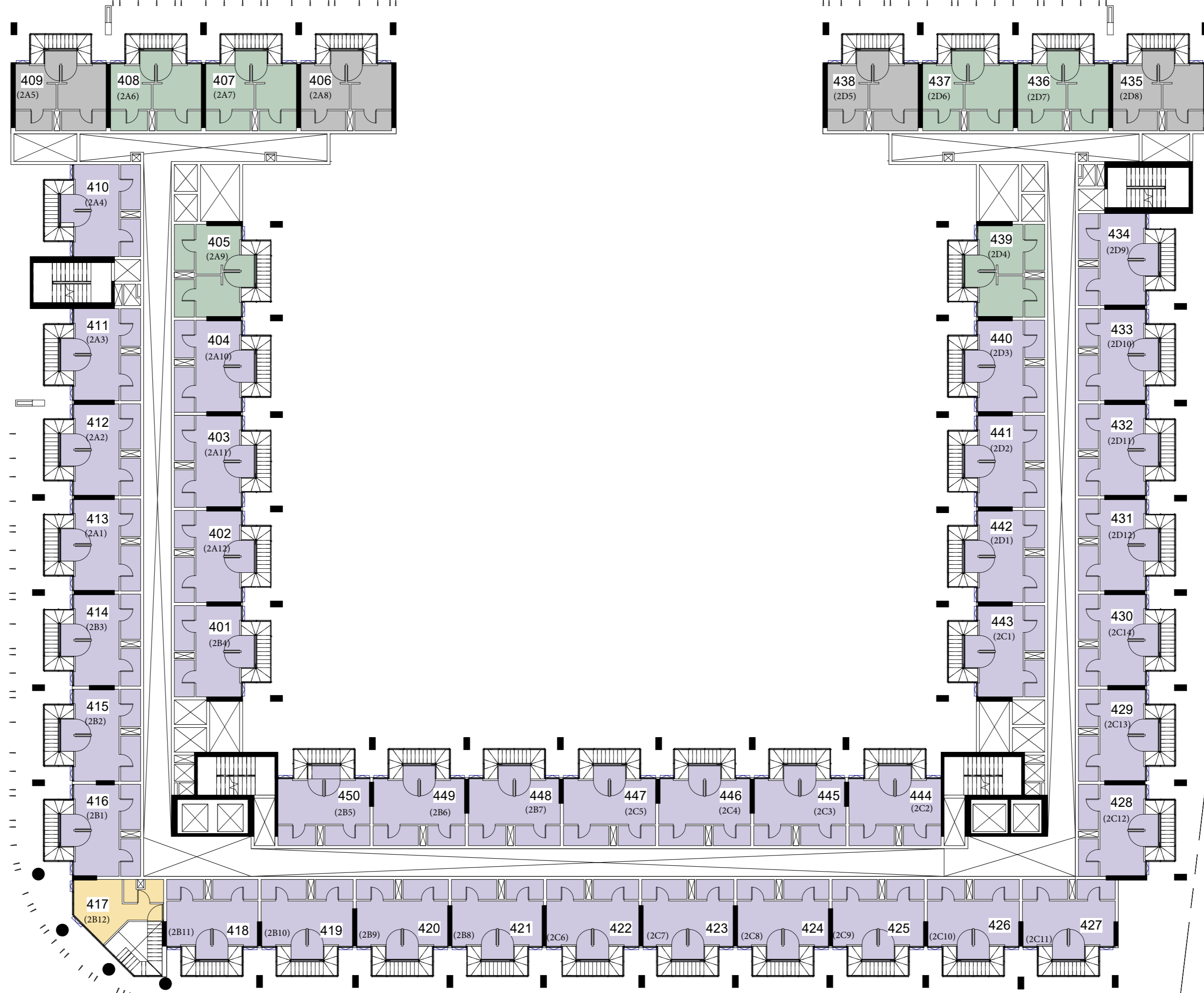
FOURTH FLOOR



Unit Types

- 1 BED DUPLEX
- 2 BED DUPLEX DELUXE
- 2 BED DUPLEX
- 2 BED DUPLEX

FIFTH FLOOR



- Unit Types**
- 1 BED DUPLEX
 - 2 BED DUPLEX DELUXE
 - 2 BED DUPLEX
 - 2 BED DUPLEX

SIXTH FLOOR



Unit Types

- 2 BED DUPLEX DELUX
- 2 BED DUPLEX
- 1 BED EXECUTIVE A
- 2 BED DUPLEX
- 1 BED EXECUTIVE A
- 1 BED EXECUTIVE B

SEVENTH FLOOR



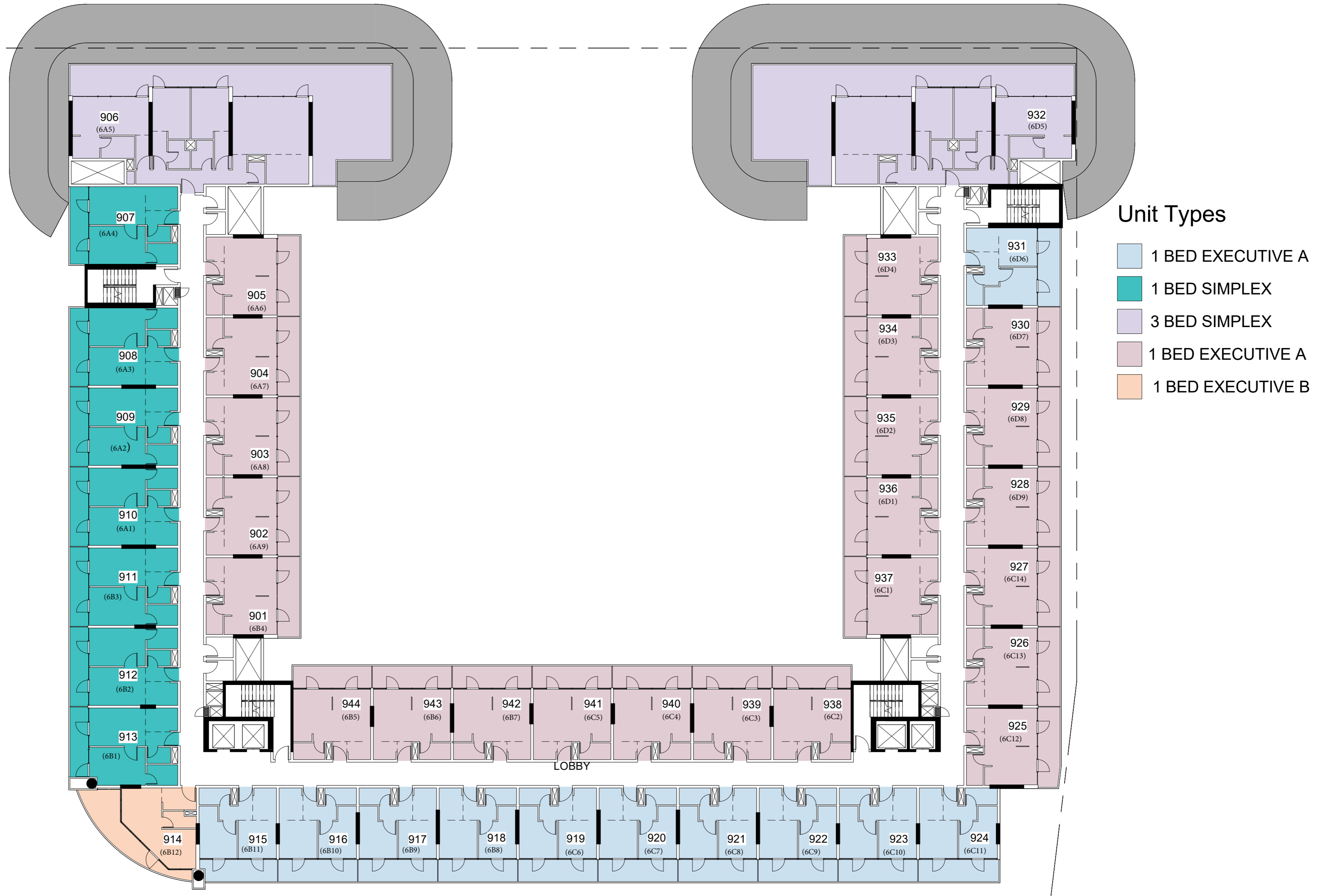
Unit Types

- 2 BED DUPLEX DELUXE
- 2 BED DUPLEX
- 2 BED DUPLEX
- 1 BED EXECUTIVE A
- 1 BED EXECUTIVE B

EIGHT FLOOR



NINTH FLOOR



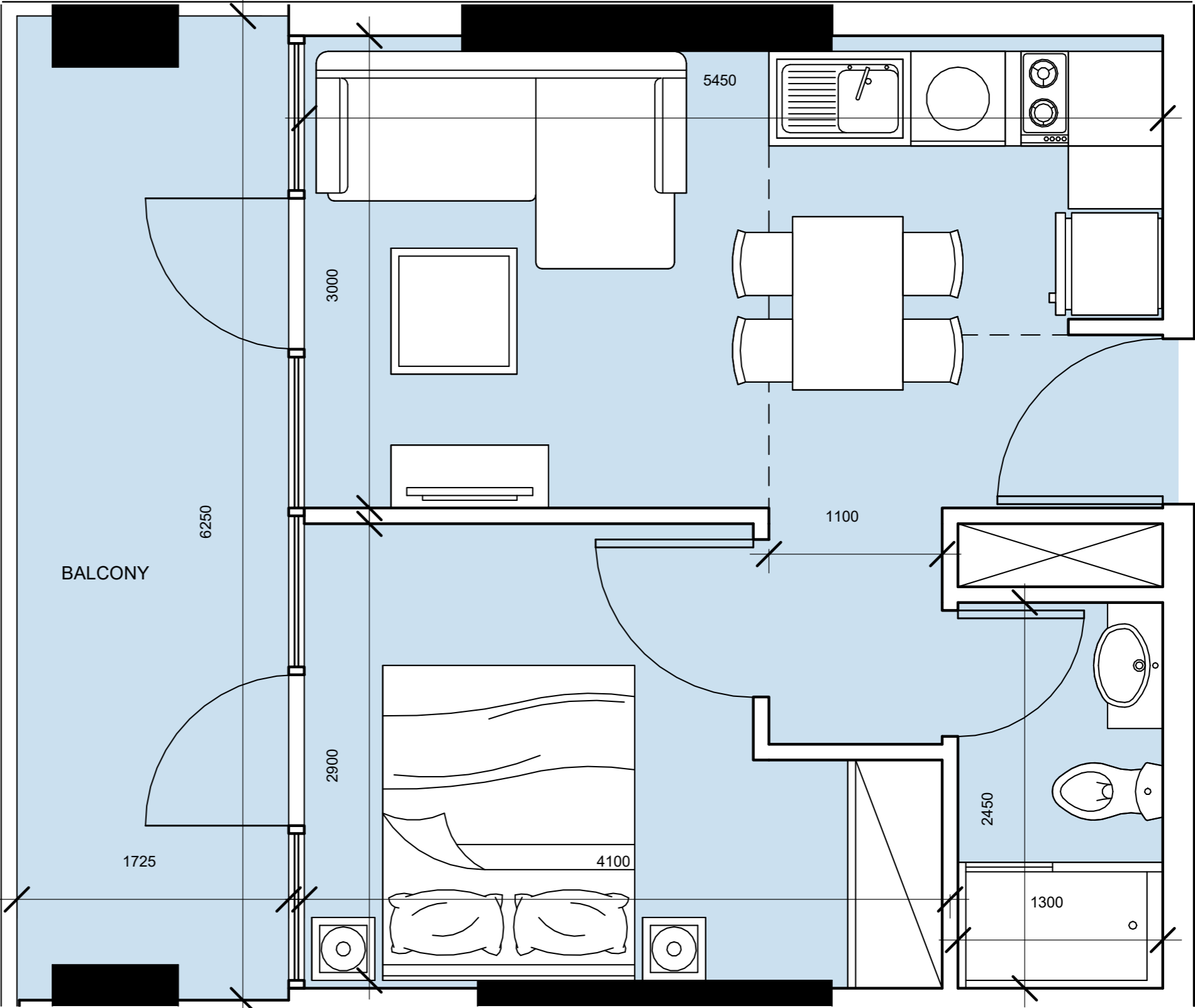
1 BEDROOM EXECUTIVE A

GROSS FLOOR Area

Suite Area	up to 36.34 sqm	up to 391 sqf
Balcony Area	up to 11.43 sqm	up to 122.98 sqf
Total Area	up to 47.71 sqm	up to 506.796 sqf



1 BEDROOM EXECUTIVE A



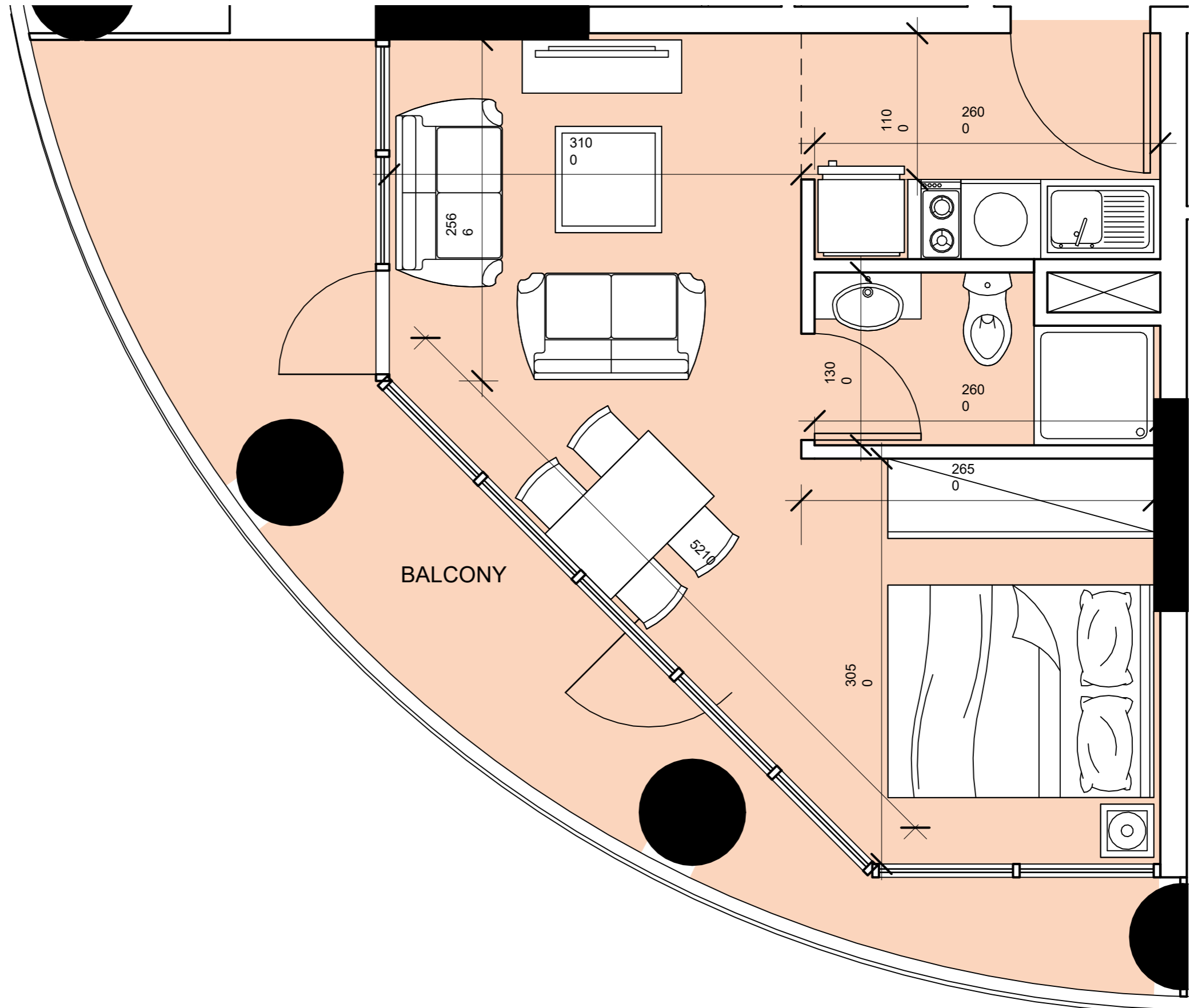
1 BEDROOM EXECUTIVE B

GROSS FLOOR Area

Suite Area	up to 32.07 sqm	up to 345 sqf
Balcony Area	up to 17.49 sqm	up to 188.19 sqf
Total Area	up to 48.21 sqm	up to 518.73 sqf



1 BEDROOM EXECUTIVE B



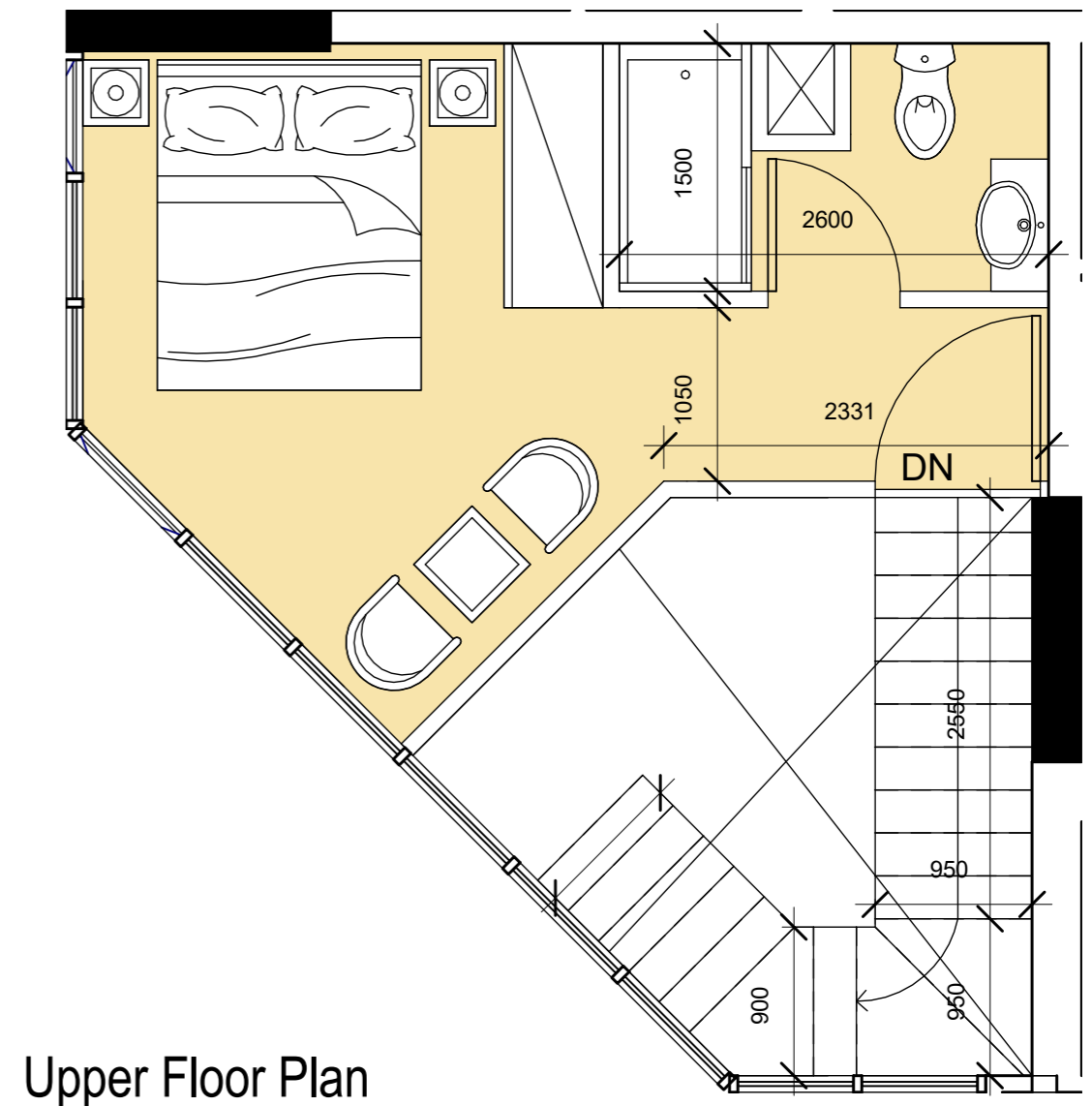
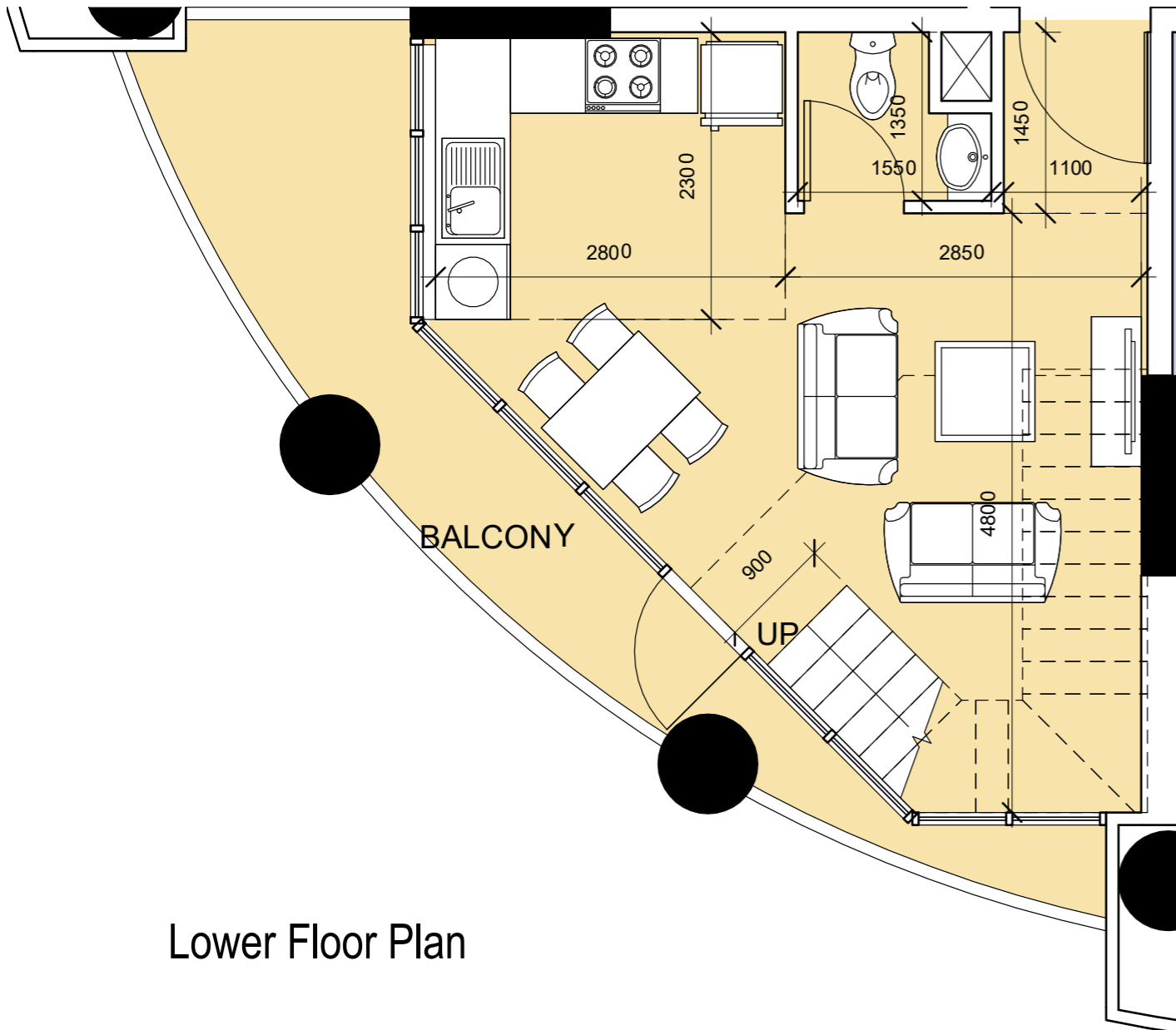
1 BEDROOM DUPLEX

GROSS FLOOR Area

Suite Area	up to 48.14 sqm	up to 517.98 sqf
Balcony Area	up to 19.84 sqm	up to 213.47sqf
Total Area	up to 67.98 sqm	up to 731.46 sqf



1 BEDROOM DUPLEX



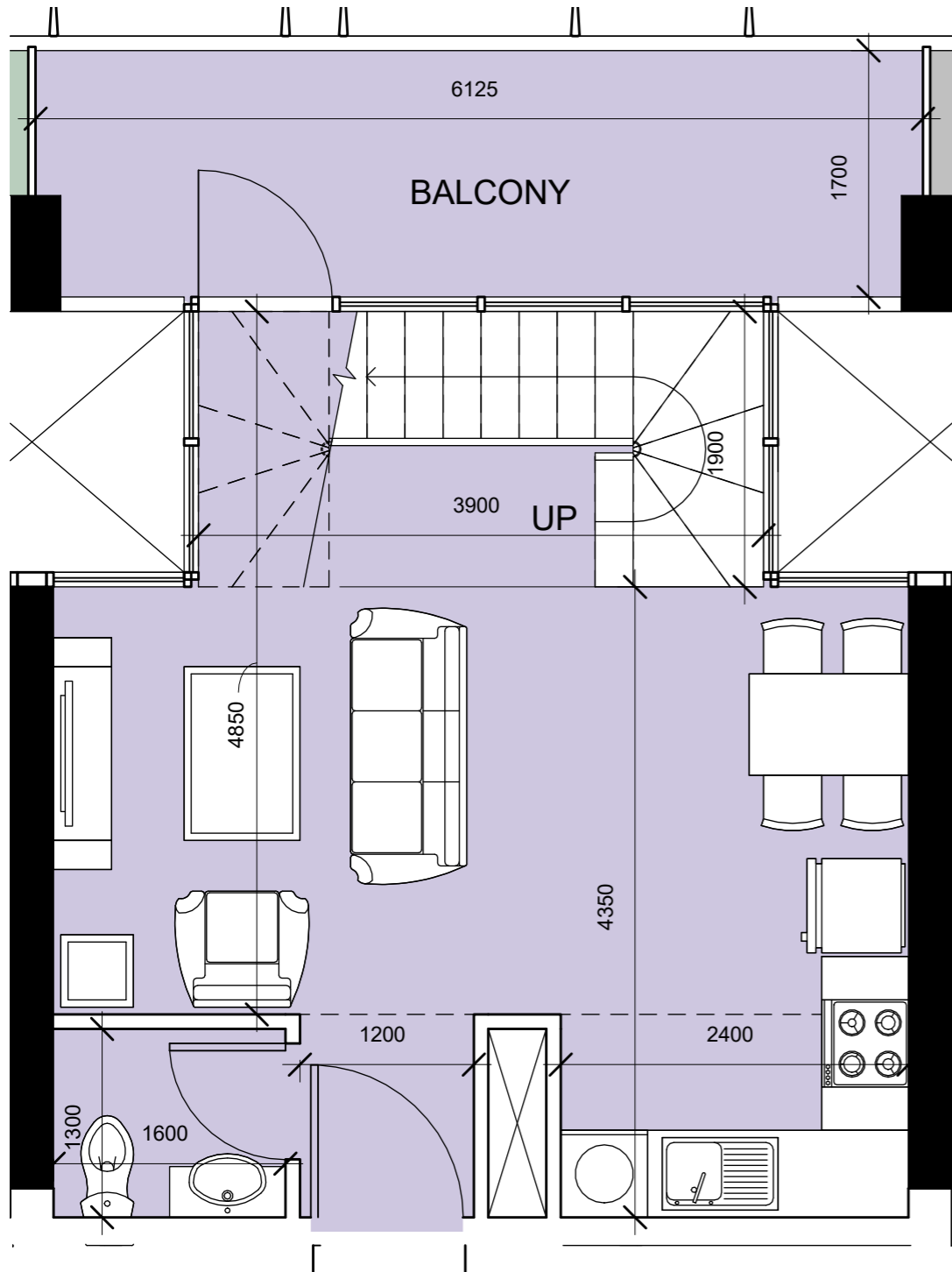
2 BEDROOM DUPLEX

GROSS FLOOR Area

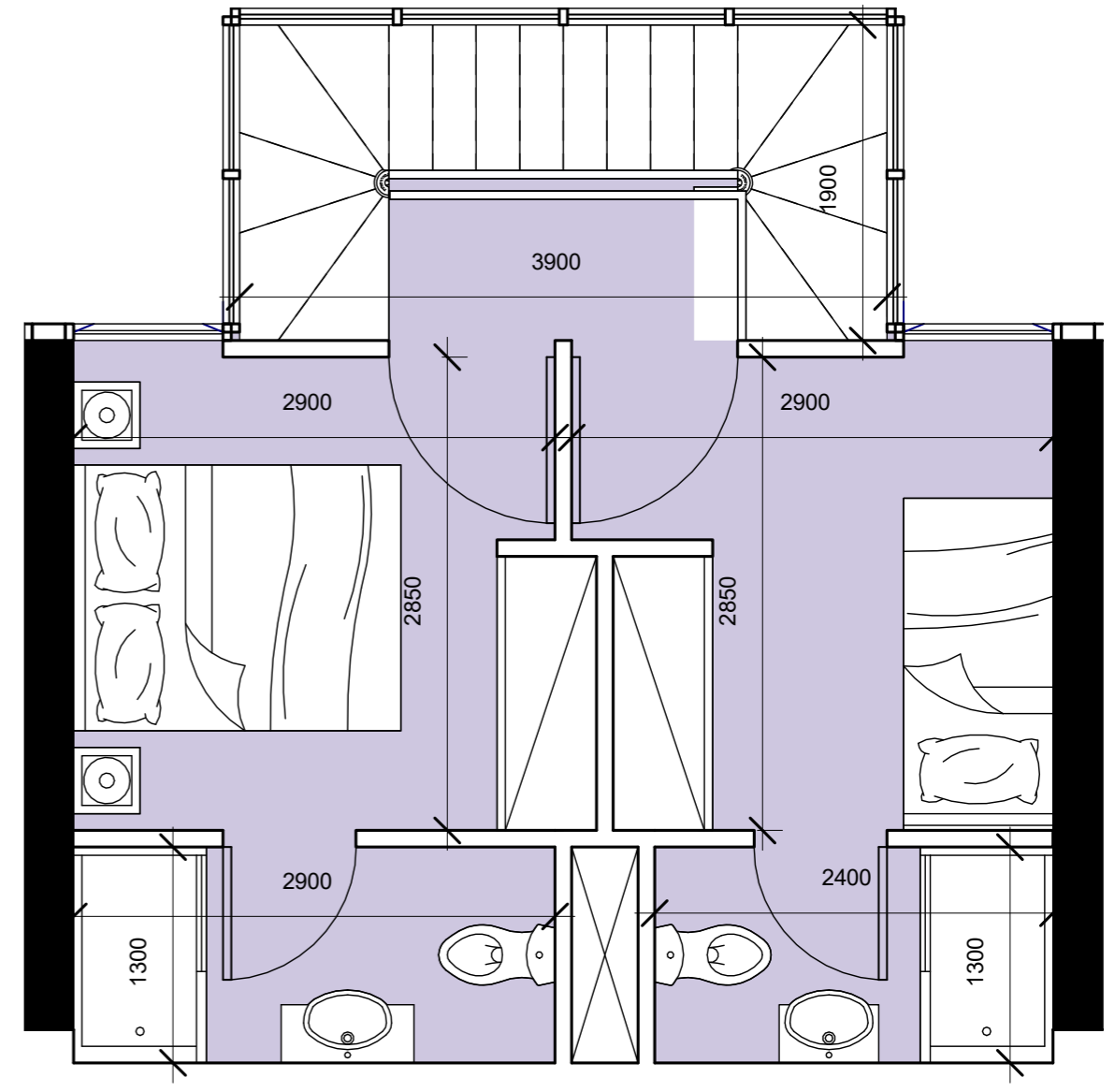
Suite Area	up to 74.64sqm	up to 803.12 sqf
Balcony Area	up to 12.84 sqm	up to 138.15 sqf
Total Area	up to 86.19 sqm	up to 927.40 sqf



2 BEDROOM DUPLEX



Lower Floor Plan



Upper Floor Plan

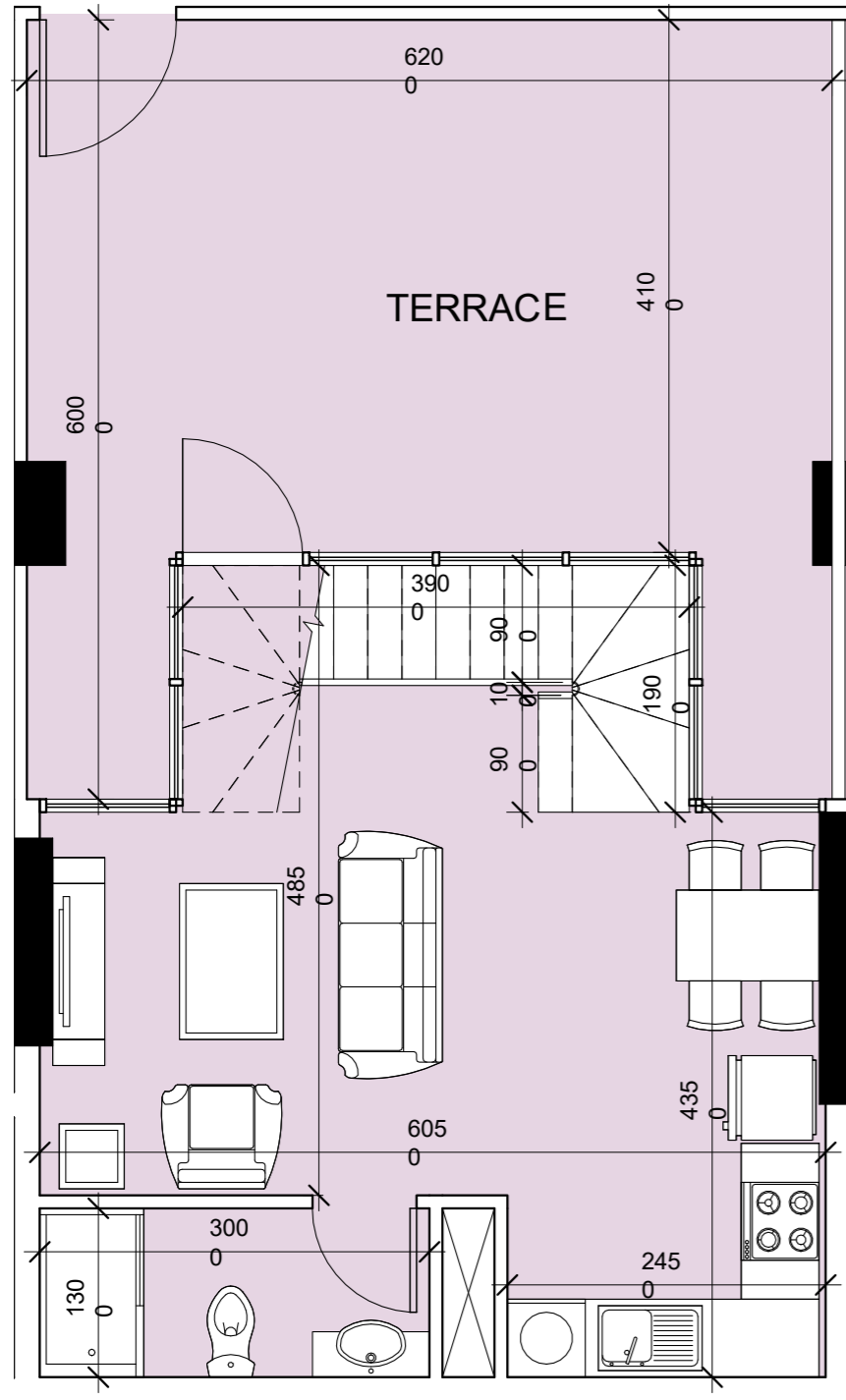
2 BEDROOM DUPLEX (GROUND FLOOR)

GROSS FLOOR Area

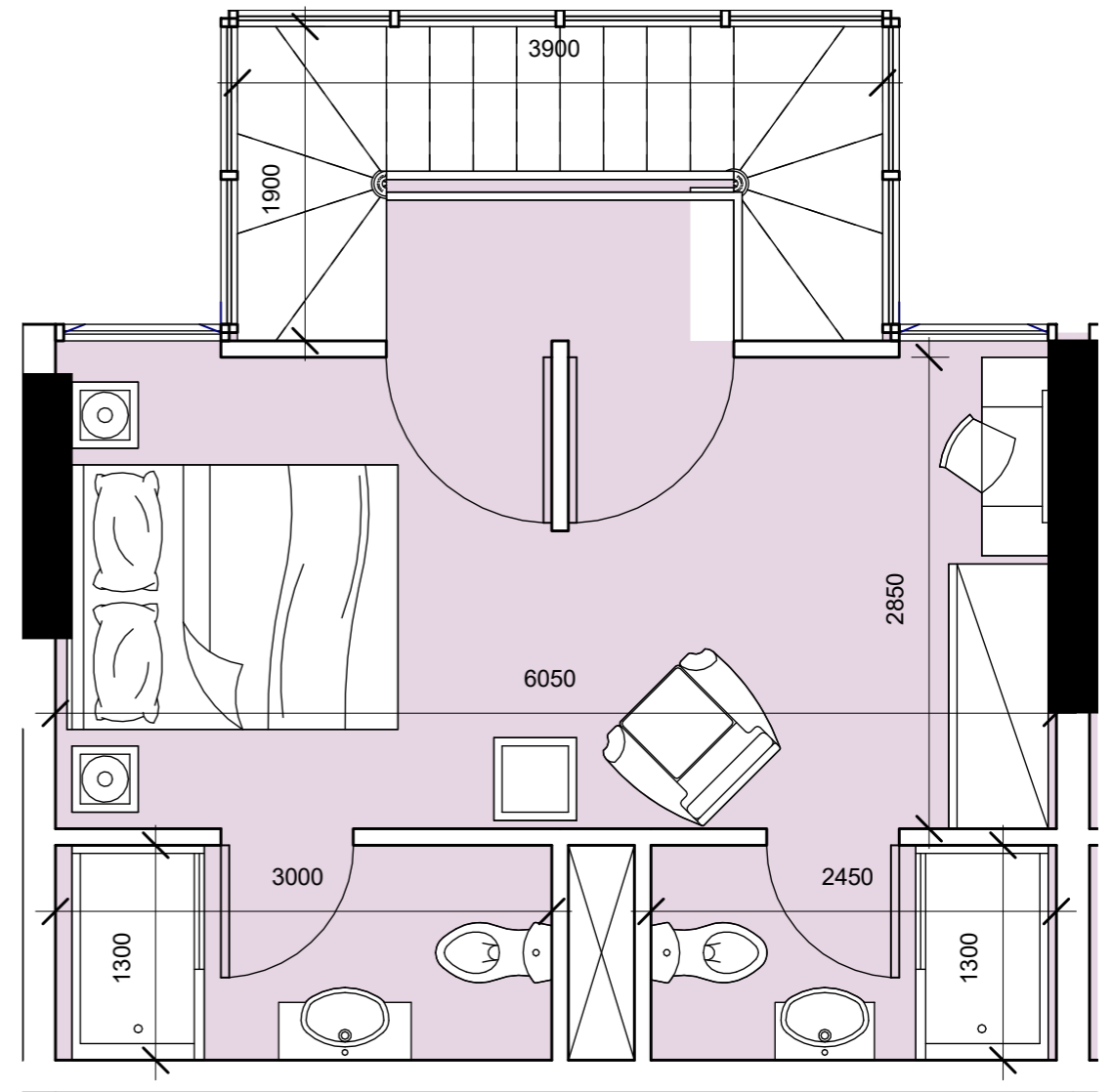
Suite Area	up to 74.67 sqm	up to 803.44 sqf
Balcony Area	up to 30.95 sqm	up to 803.44 sqf
Total Area	up to 105.61 sqm	up to 803.44 sqf



2 BEDROOM DUPLEX (GROUND FLOOR)



Lower Floor Plan



Upper Floor Plan

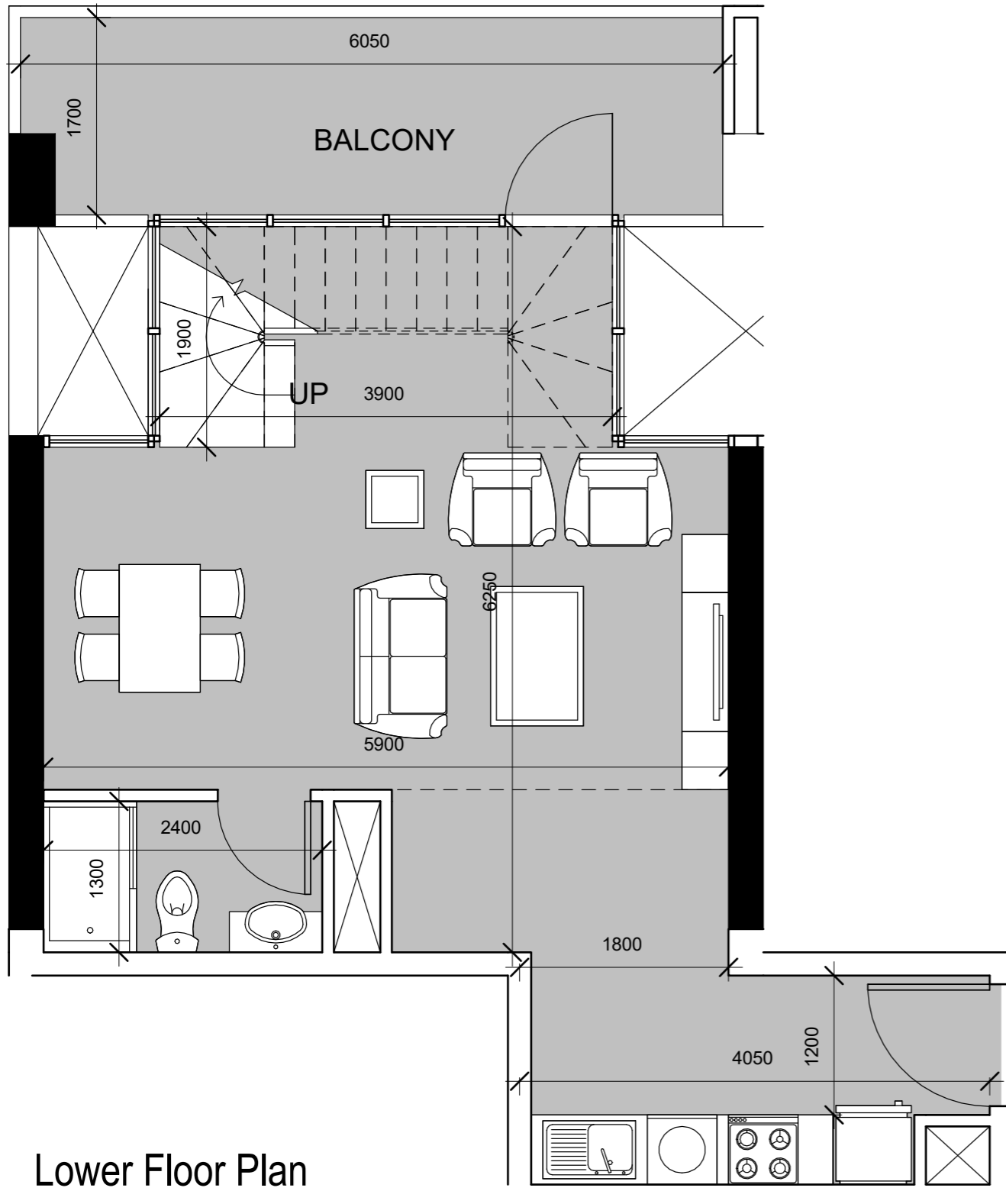
2 BEDROOM DUPLEX DELUXE

GROSS FLOOR Area

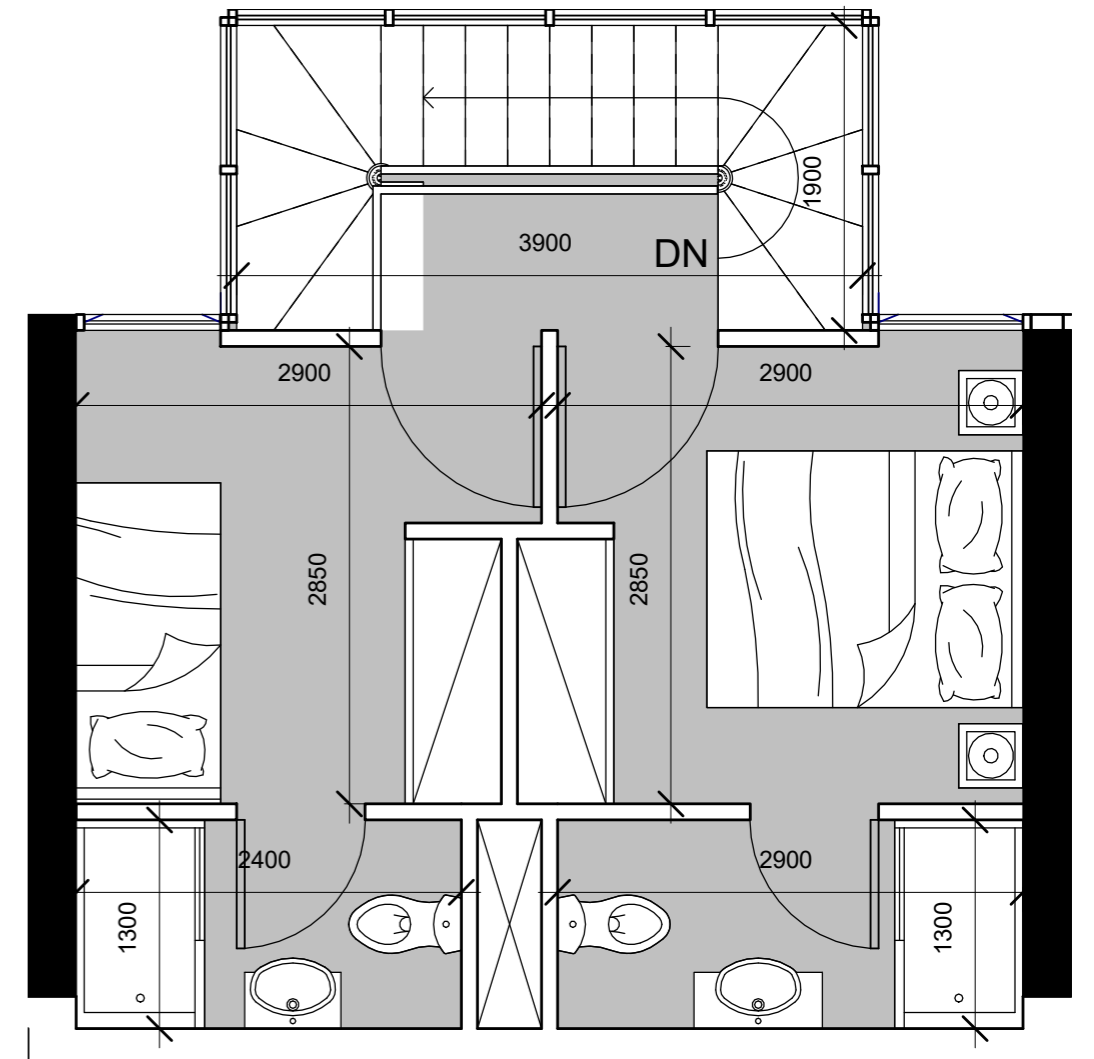
Suite Area	up to 83.67 sqm	up to 900.28 sqf
Balcony Area	up to 31 sqm	up to 333.56 sqf
Total Area	up to 104.8 sqm	up to 1127.64 sqf



2 BEDROOM DUPLEX DELUXE



Lower Floor Plan



Upper Floor Plan

2 BEDROOM SIMPLEX

OPTION B - GROSS FLOOR Area

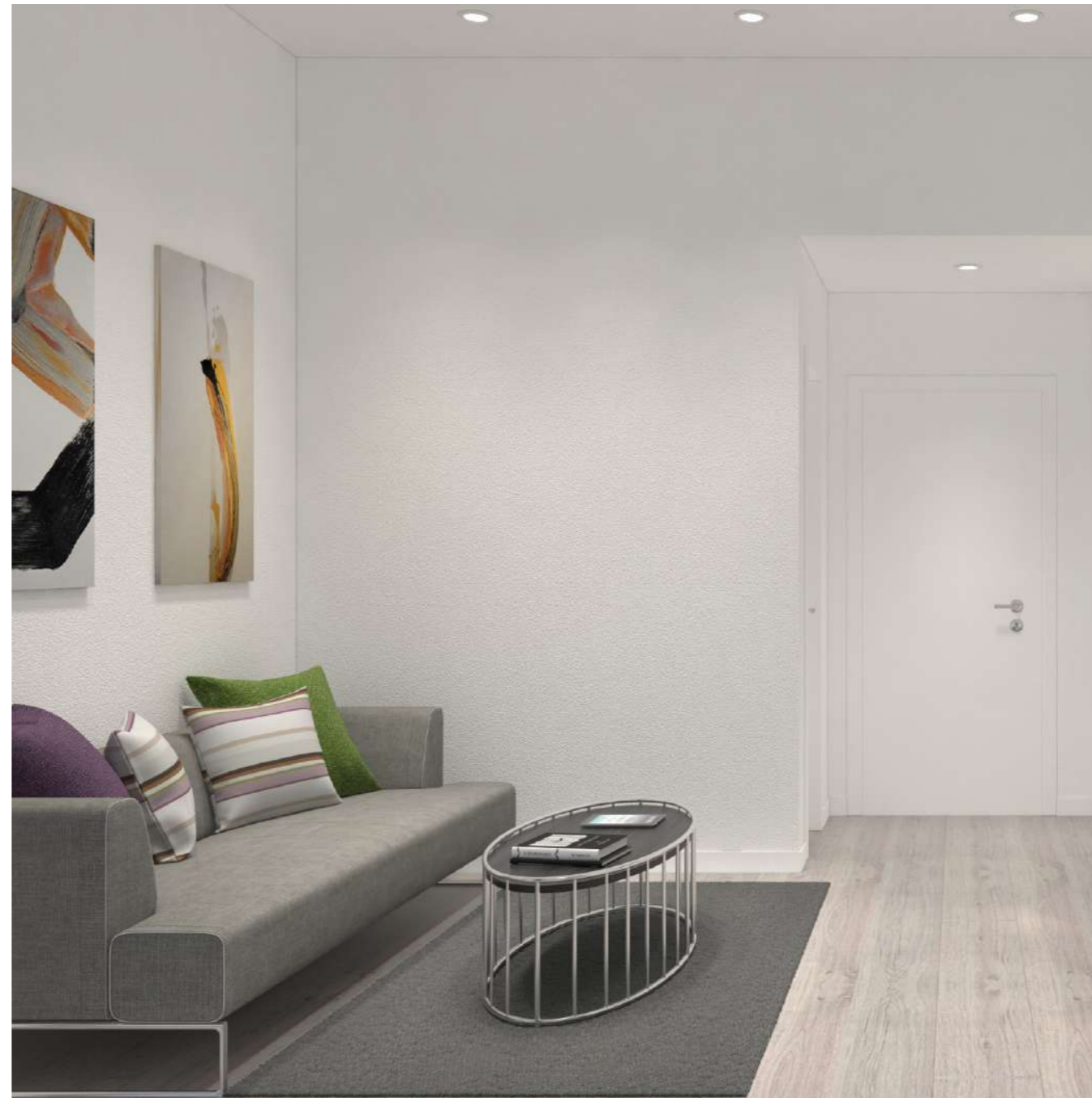
Suite Area	up to 72.73 sqm	up to 782.57 sqf
Balcony Area	up to 22.08 sqm	up to 237.58 sqf
Total Area	up to 94.81 sqm	up to 1020.15 sqf



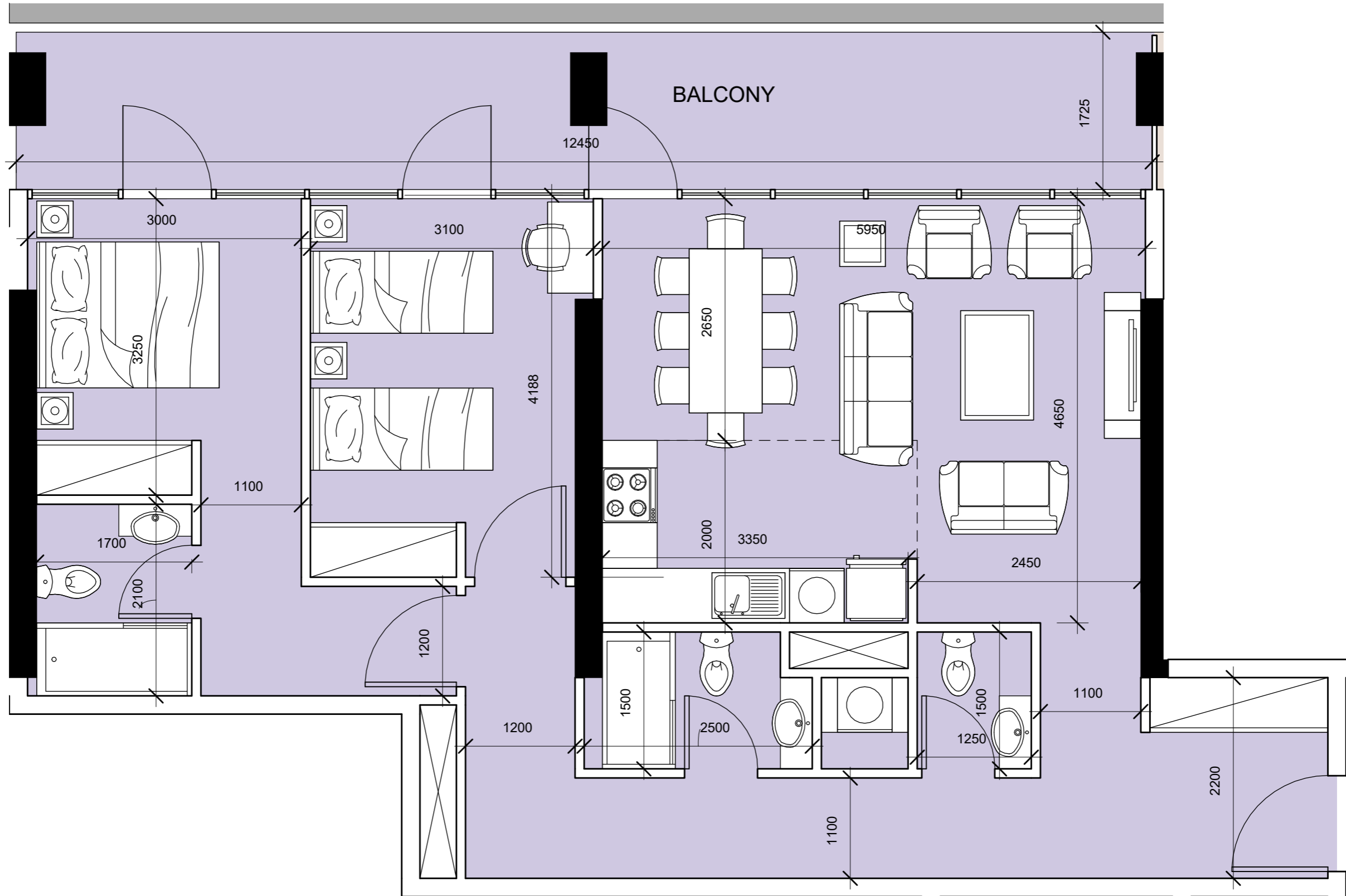
2 BEDROOM SIMPLEX

GROSS FLOOR Area

Suite Area	up to 86.27 sqm	up to 928.26 sqf
Balcony Area	up to 22.08 sqm	up to 237.58 sqf
Total Area	up to 108.34 sqm	up to 1165.73 sqf



2 BEDROOM SIMPLEX



3 BEDROOM SIMPLEX

GROSS FLOOR Area

Suite Area	up to 130.08 sqm	up to 1399.66 sqf
Balcony Area	up to 93.45 sqm	up to 1005.52 sqf
Total Area	up to 223.53 sqm	up to 2405.18 sqf

