

# Olvera at Bloom Living - Townhouse



OLVERA

## TYPE 2E Two Beds End TOWNHOUSE

GROUND FLOOR	764 sqft.	71 sqm.
FIRST FLOOR	570 sqft.	53 sqm.
TOTAL SELLABLE AREA	1334 sqft.	124 sqm.



GROUND FLOOR



FIRST FLOOR



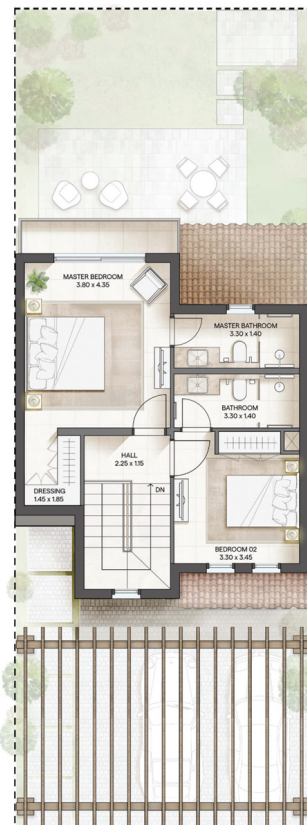
OLVERA

## TYPE 2M Two Beds Middle TOWNHOUSE

GROUND FLOOR	743 sqft.	69 sqm.
FIRST FLOOR	603 sqft.	56 sqm.
TOTAL SELLABLE AREA	1346 sqft.	125 sqm.



GROUND FLOOR



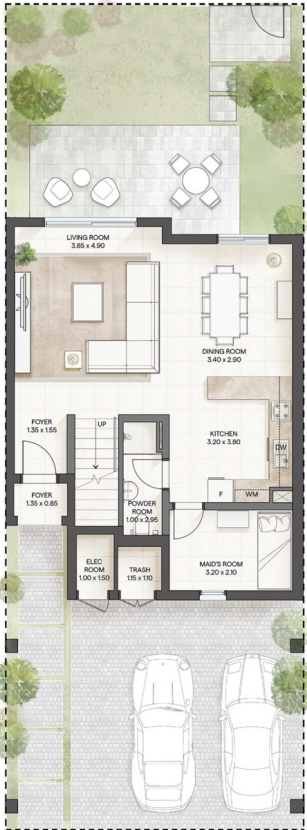
FIRST FLOOR



OLVERA

# TYPE 2M-1 Two Beds Middle 1 TOWNHOUSE

GROUND FLOOR	743 sqft.	69 sqm.
FIRST FLOOR	560 sqft.	52 sqm.
<b>TOTAL SELLABLE AREA</b>	<b>1303 sqft.</b>	<b>121 sqm.</b>



GROUND FLOOR



FIRST FLOOR



OLVERA

# TYPE 3E Three Beds End. TOWNHOUSE

GROUND FLOOR	958 sqft.	89 sqm.
FIRST FLOOR	883 sqft.	82 sqm.
<b>TOTAL SELLABLE AREA</b>	<b>1841 sqft.</b>	<b>171 sqm.</b>



GROUND FLOOR



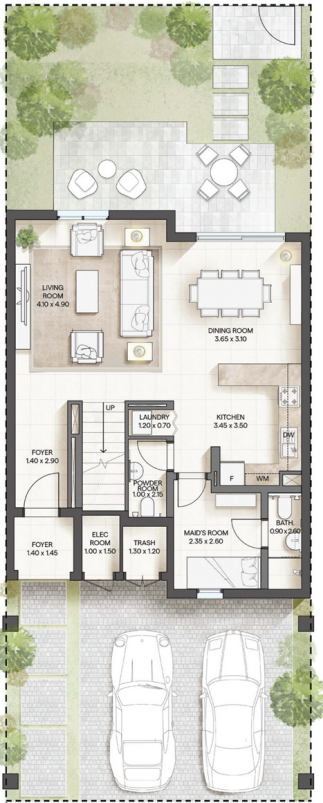
FIRST FLOOR



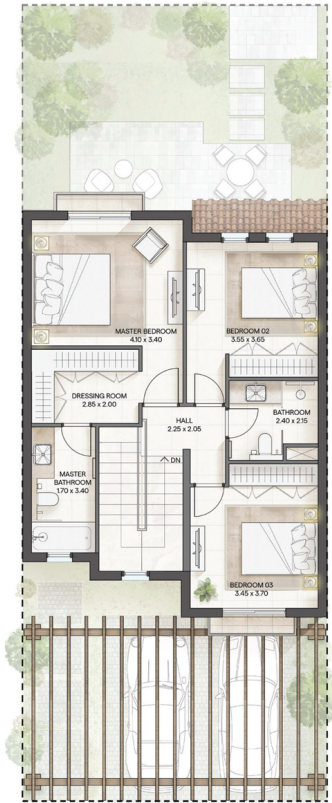
OLVERA

## TYPE 3M Three Beds Middle TOWNHOUSE

GROUND FLOOR	829 sqft.	77 sqm.
FIRST FLOOR	797 sqft.	74 sqm.
TOTAL SELLABLE AREA	1626 sqft.	151 sqm.



GROUND FLOOR



FIRST FLOOR

# CONTACT US



Call Us [+971 4 248 3400](tel:+97142483400)



WhatsApp [+971 55 162 3236](https://wa.me/971551623236)

**TANAMI**  
PROPERTIES