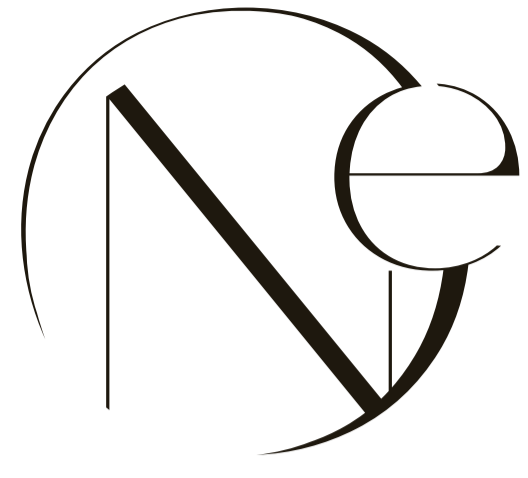




BY  
BINGHATTI

3B + G + 2P + 1ST FLOOR (AMENITY) + 62 RESIDENTIAL FLOORS  
1 MECH FLOOR + 1 MECH FLOOR (NON ACCESSIBLE) + ROOF FLOOR



BY  
BINGHATTI



PERSPECTIVE



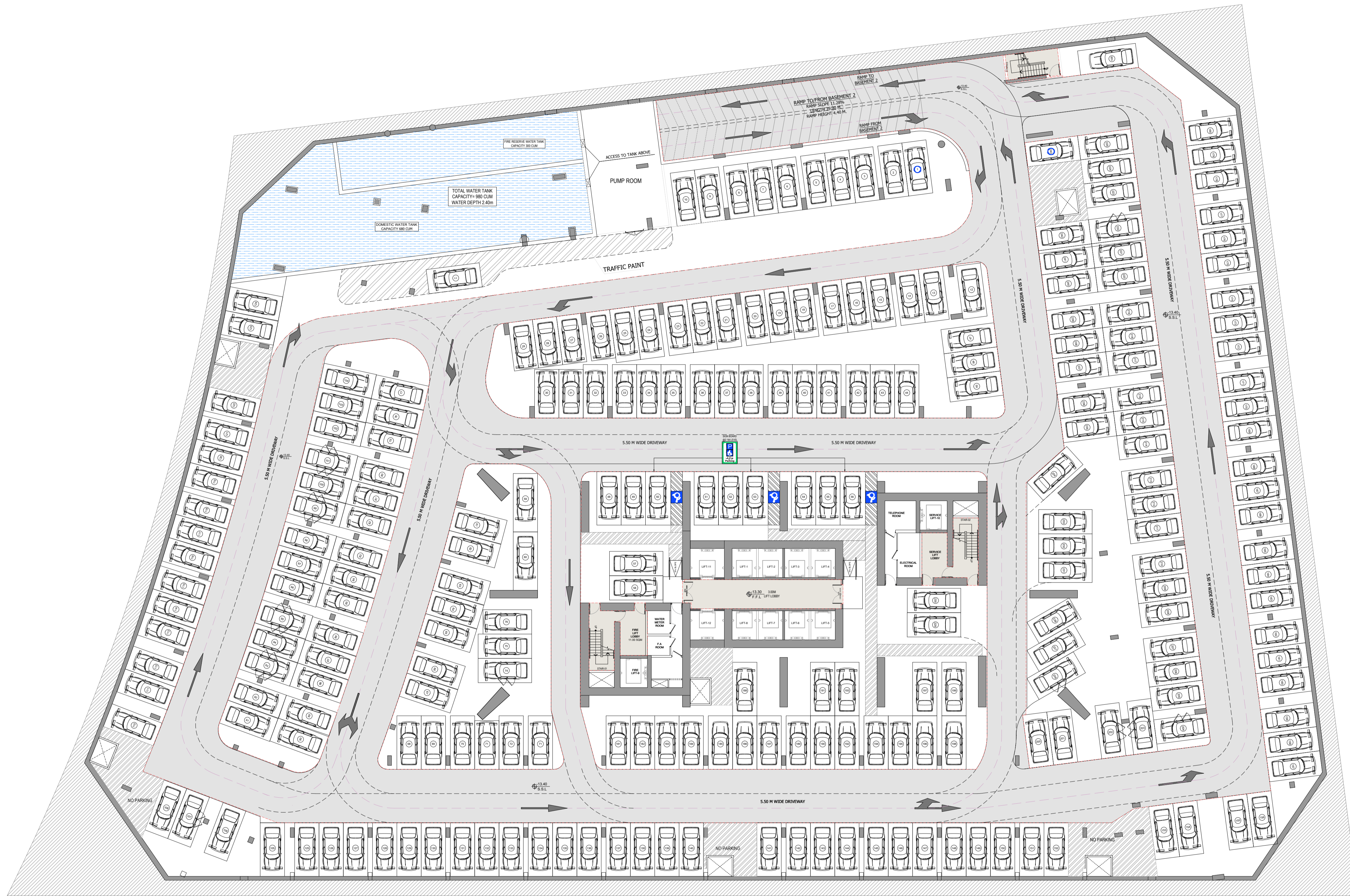
BY  
BINGHATTI

## UNIT TABULATION

<b>STUDIO</b>	<b>1-BEDROOM</b>	<b>2-BEDROOM</b>	<b>3-BEDROOM</b>	<b>4-BEDROOM</b>	<b>TOTAL</b>
111	496	110	11	8	736



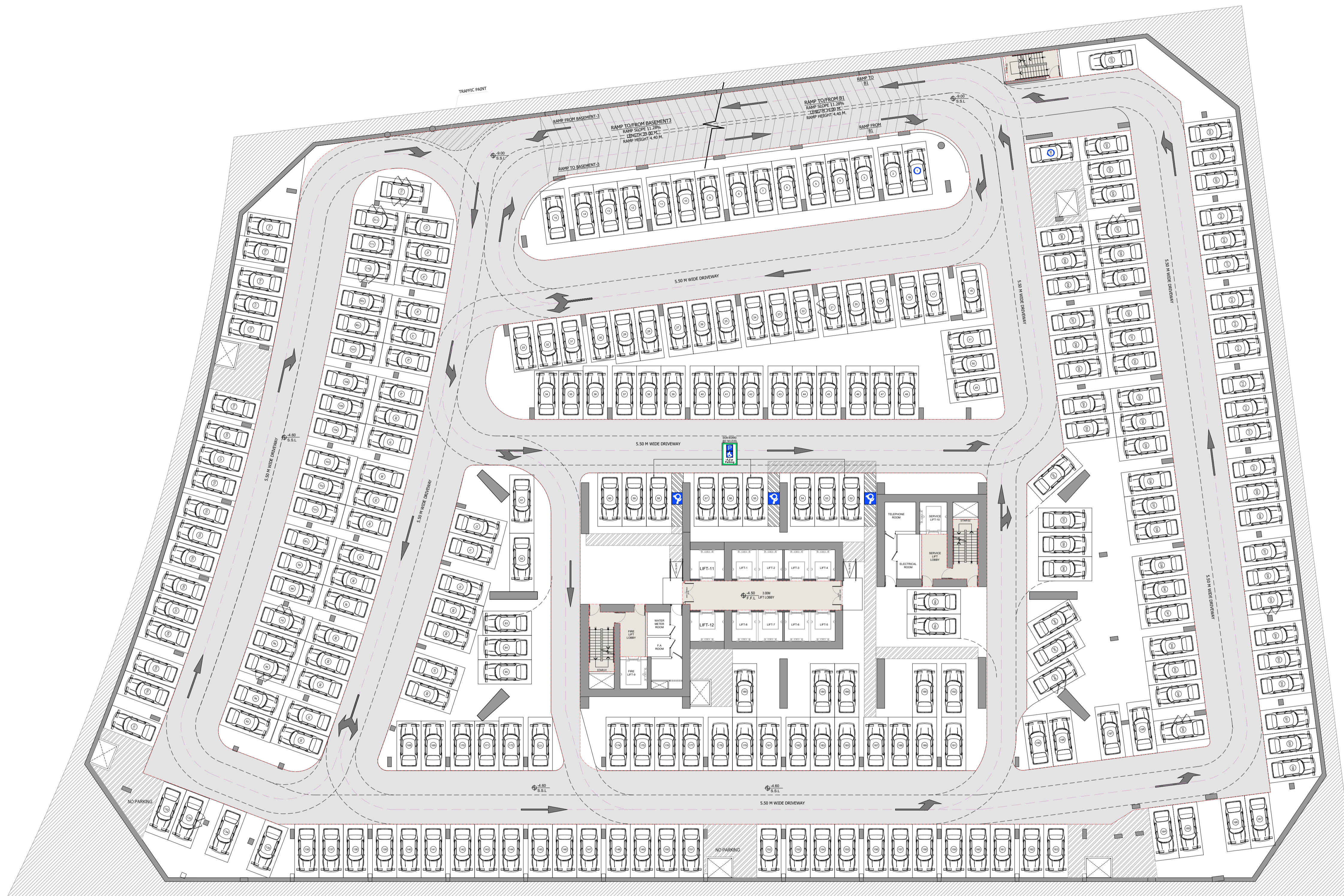
BY  
BINGHATTI



BASEMENT-3 = 243 NOS. PARKING



BY  
BINGHATTI



BASEMENT - = 261 NOS. PARKING



BY  
BINGHATTI

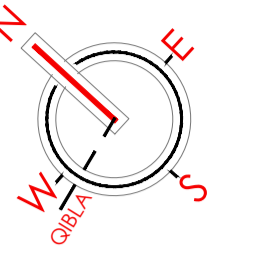


BASEMENT-1= 243 NOS. PARKING





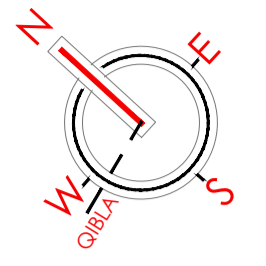
BY  
BINGHATTI



169 PARKING



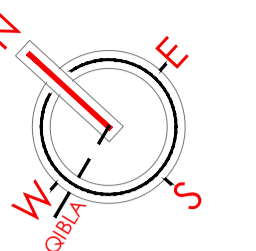
BY  
BINGHATTI



179 PARKING



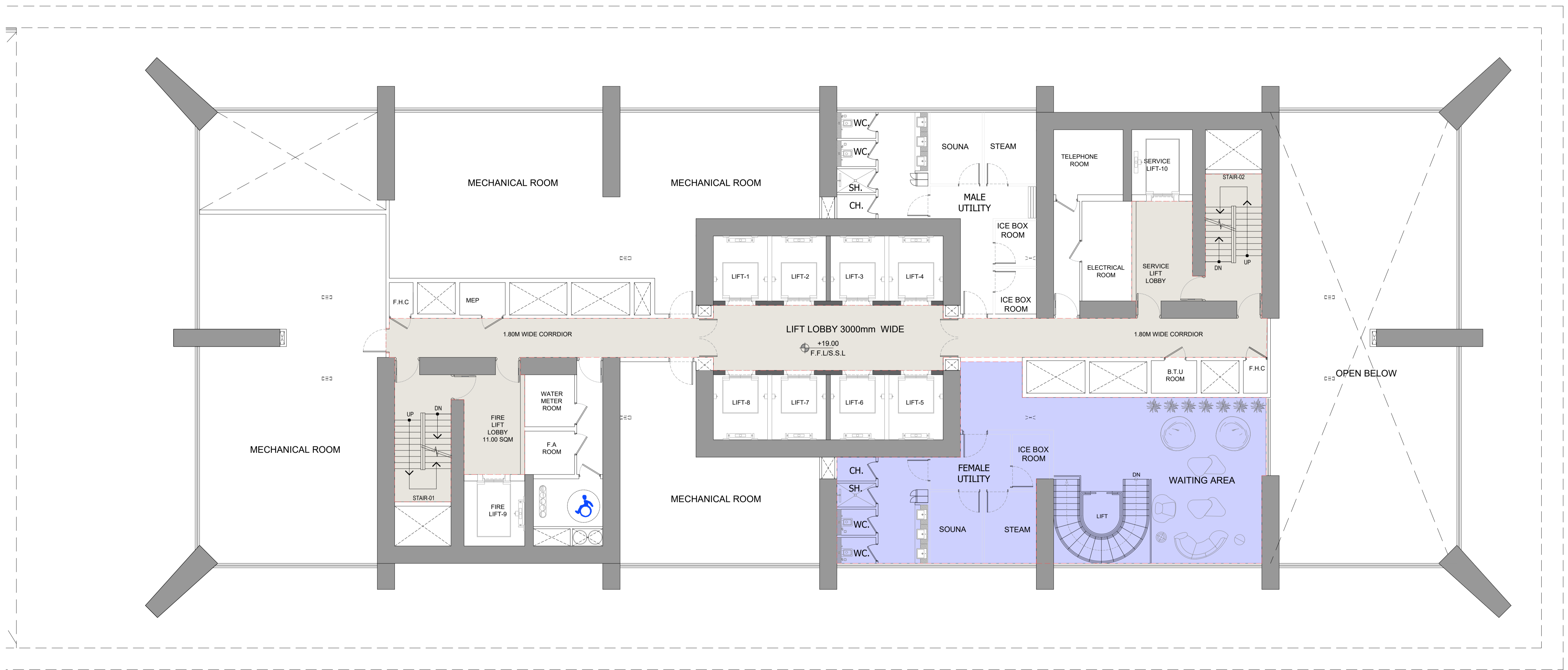
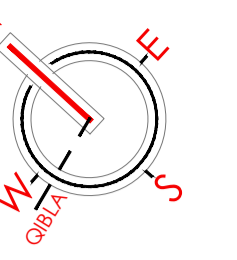
BY  
BINGHATTI



1ST FLOOR PLAN (AMENITIES)



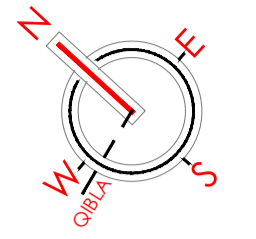
BY  
BINGHATTI







BY  
BINGHATTI



BURJ KHALIFA VIEW  
AMENITY VIEW

MAIN ROAD  
BUSINESS BAY COMMUNITY

DUBAI CANAL  
DUBAI CANAL BOARDWALK

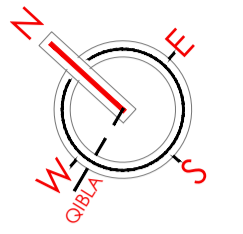


BUILDING AMENITIES  
SPORTS FIELD

4TH - 21ST, 23RD TO 41ST, 44TH TO 58TH FLOOR PLAN



BY  
BINGHATTI

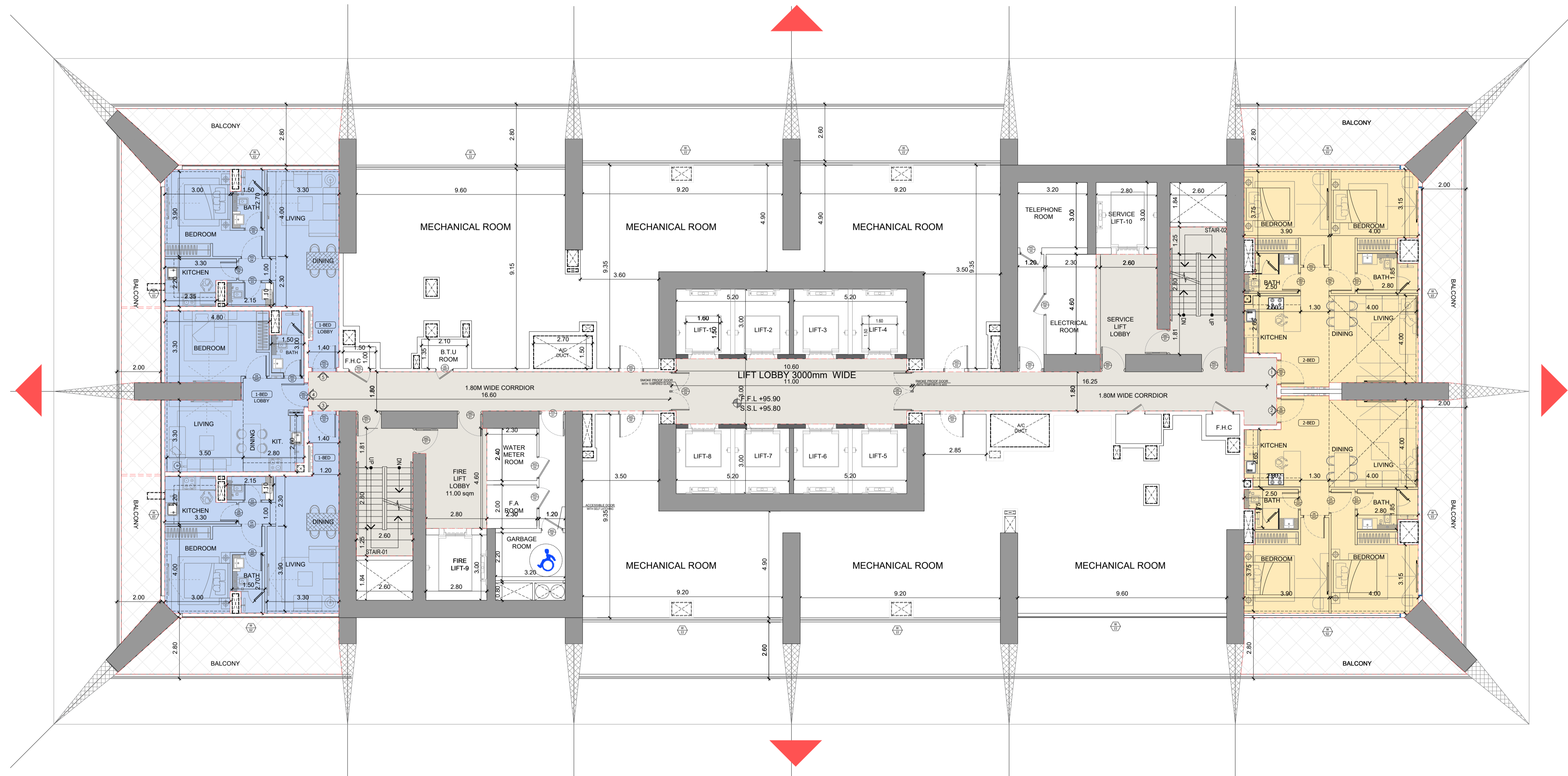


BURJ KHALIFA VIEW  
AMENITY VIEW

MAIN ROAD  
BUSINESS BAY COMMUNITY

DUBAI CANAL  
DUBAI CANAL BOARDWALK

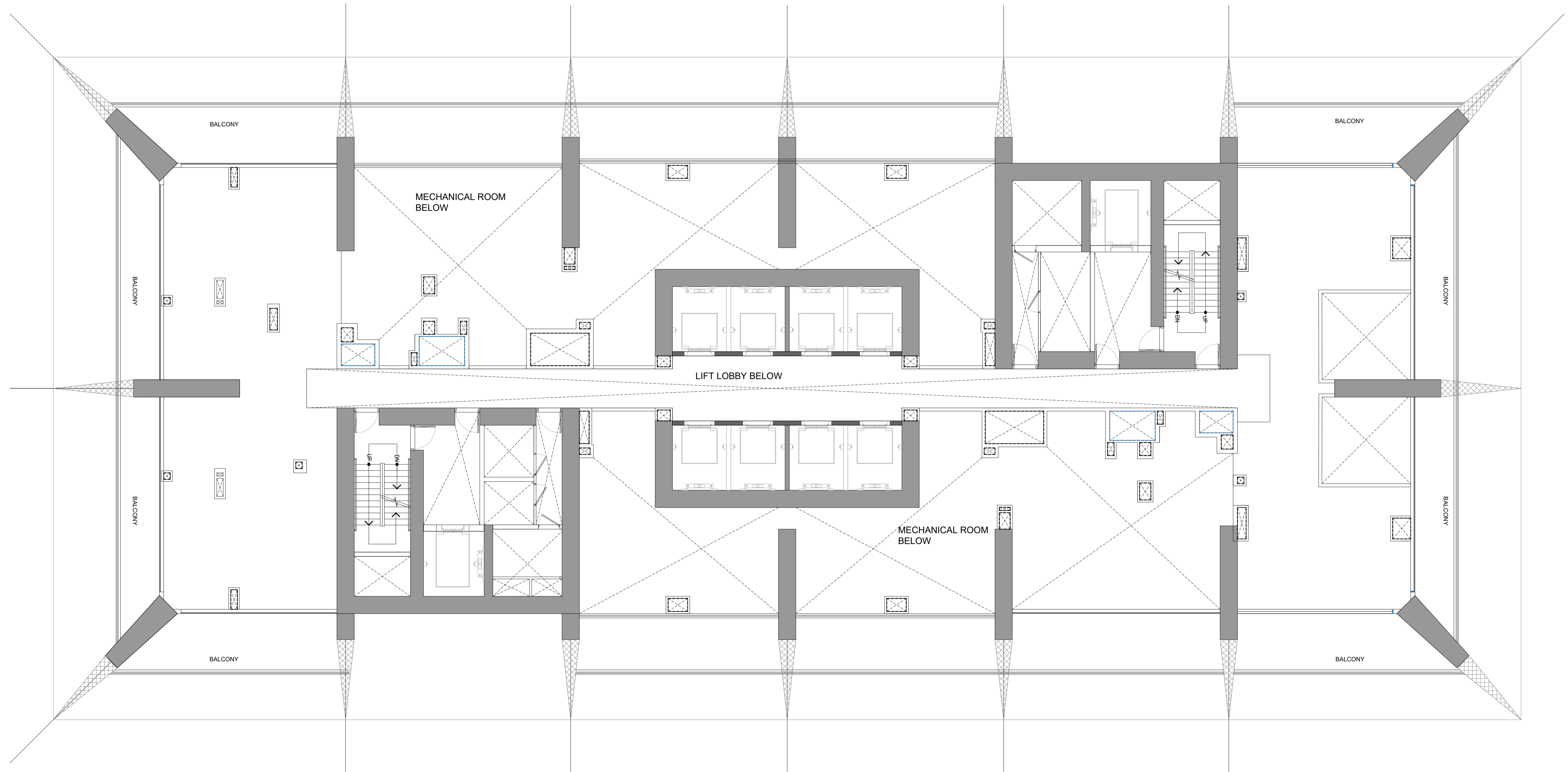
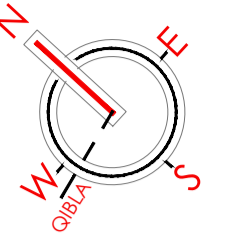
BUILDING AMENITIES  
SPORTS FIELD



4TH - 21ST, 23RD TO 41ST, 44TH TO 58TH FLOOR PLAN

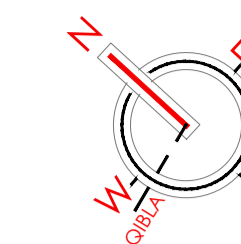


BY  
BINGHATTI





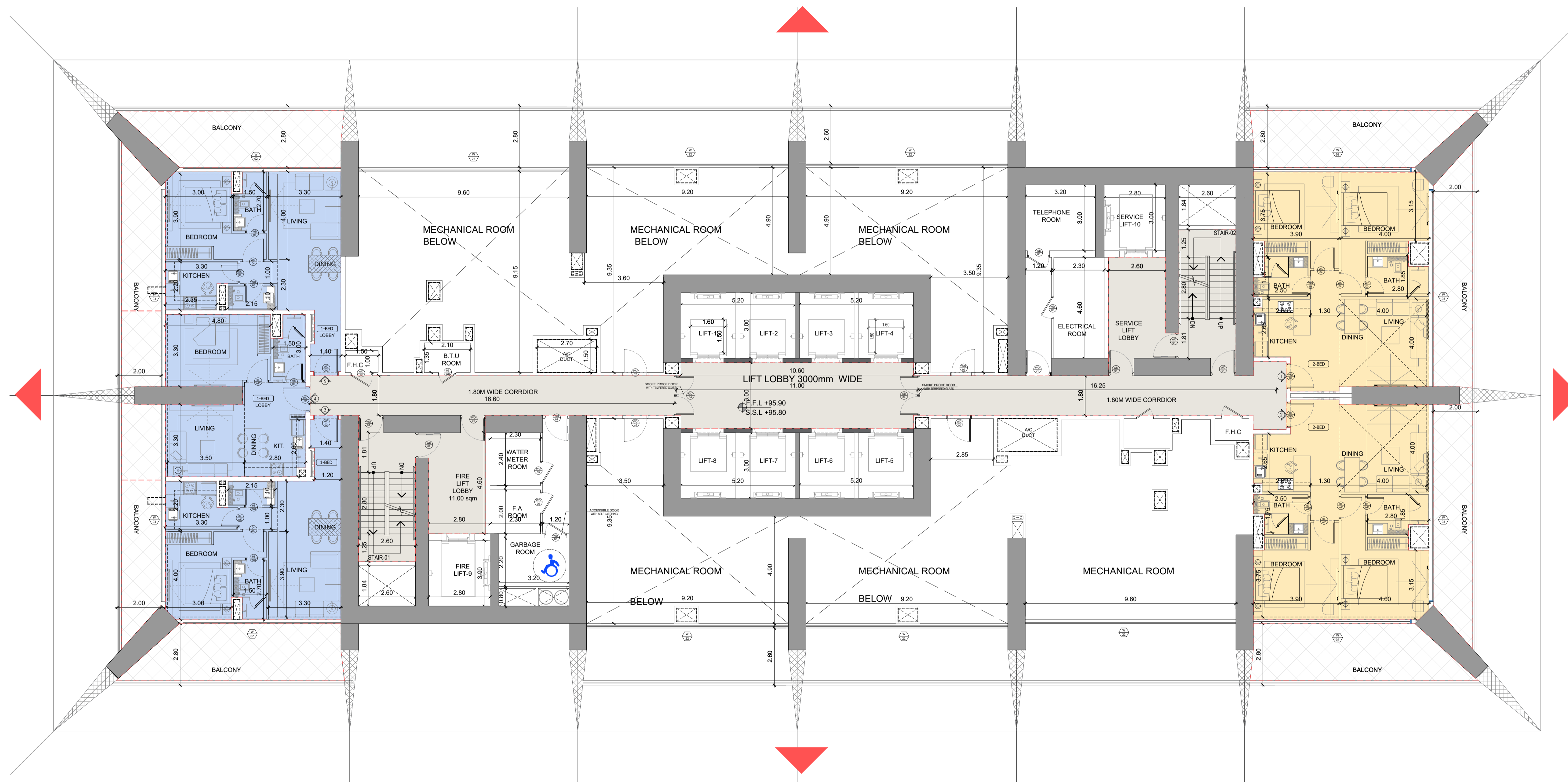
BY  
BINGHATTI



BURJ KHALIFA VIEW  
AMENITY VIEW

MAIN ROAD  
BUSINESS BAY COMMUNITY

DUBAI CANAL  
DUBAI CANAL BOARDWALK



BUILDING AMENITIES  
SPORTS FIELD



BY  
BINGHATTI



BURJ KHALIFA VIEW  
AMENITY VIEW

MAIN ROAD  
BUSINESS BAY COMMUNITY

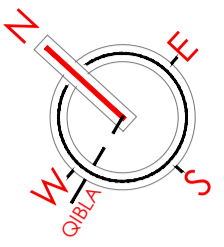
DUBAI CANAL  
DUBAI CANAL BOARDWALK



BUILDING AMENITIES  
SPORTS FIELD



BY  
BINGHATTI



BURJ KHALIFA VIEW  
AMENITY VIEW

MAIN ROAD  
BUSINESS BAY COMMUNITY

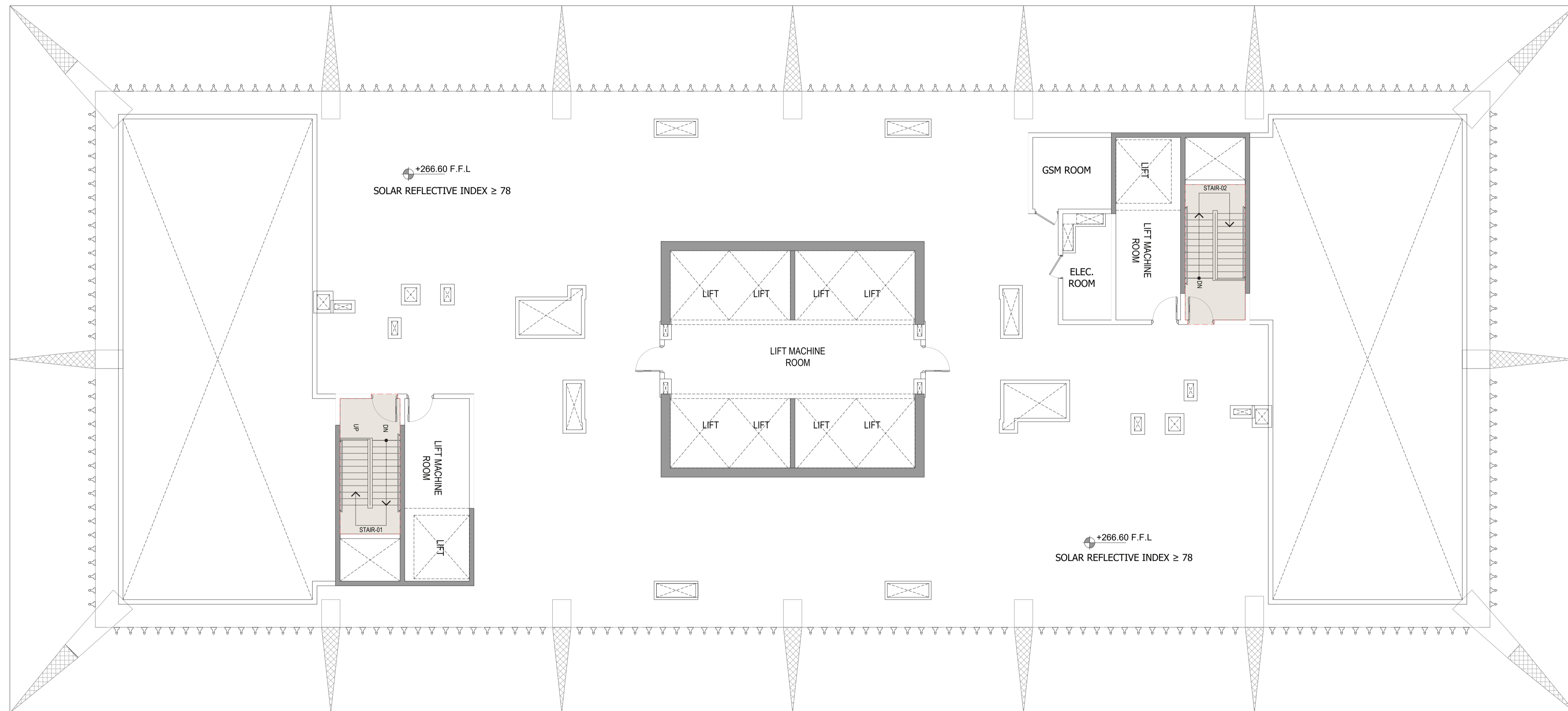
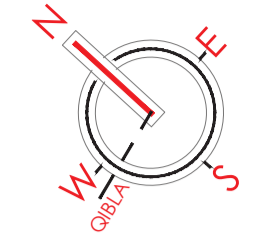
DUBAI CANAL  
DUBAI CANAL BOARDWALK



BUILDING AMENITIES  
SPORTS FIELD



BY  
BINGHATTI



ROOF FLOOR PLAN



## Contact Us

+971 4 248 3400, +971 55 162 3236

info@tanamiproperties.ae

*For More Info...*

[www.tanamiproperties.com/Projects/One-by-Binghatti-FloorPlans](http://www.tanamiproperties.com/Projects/One-by-Binghatti-FloorPlans)



3405, Marina Plaza, Al Marsa Street, Dubai Marina, UAE