

Palace Residences Hillside A - Apartment

PALACE
RESIDENCES
HILLSIDE

DUBAI HILLS ESTATE

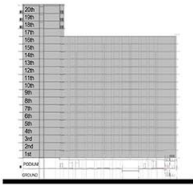
2 BEDROOM TYPE B

UNIT 107, 207, 307, 407, 507, 607, 707, 807, 907, 1007, 1107, 1207, 1307, 1407, 1507, 1607, 1707, 1807, 1907, 2007

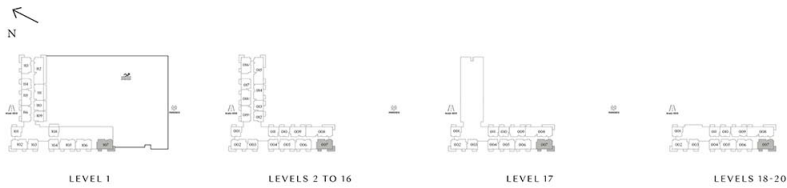
SUITE AREA	938.09 SQ.FT.	87.15 SQ.M.
BALCONY AREA	209.03 SQ.FT.	19.42 SQ.M.
TOTAL AREA	1147.12 SQ.FT.	106.57 SQ.M.



KEY SECTION



KEYPLAN



LOOR PLAN 1. All dimensions are in imperial and metric, and measured from finish to finish excluding construction tolerances. 2. All materials, dimensions, and drawings are approximate only. 3. Information is subject to change without notice, at developer's absolute discretion. 4. Actual area may vary from the stated area. Drawings not to scale. 6. All images used are for illustrative purposes only and do not represent the actual size, features, specifications, fittings, and furnishings. 7. The developer reserves the right to make revisions / alterations, at it's absolute discretion, without any liability whatsoever.

EMAAR

PALACE

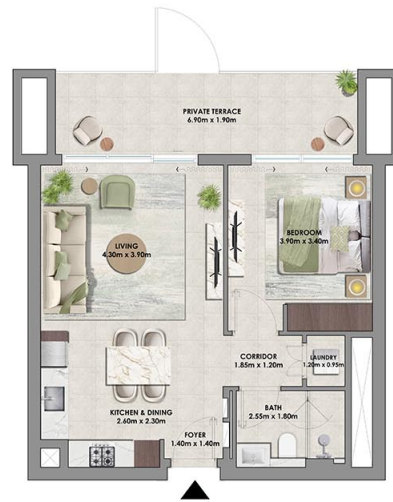
RESIDENCES HILLSIDE

DUBAI HILLS ESTATE

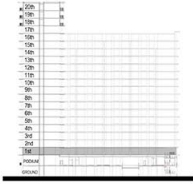
1 BEDROOM TYPE A2

UNIT 108, 109, 110

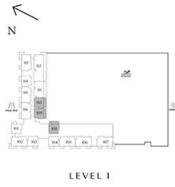
SUITE AREA	609.88 SQ.FT.	56.66 SQ.M.
BALCONY AREA	160.31 SQ.FT.	14.89 SQ.M.
TOTAL AREA	770.12 SQ.FT.	71.55 SQ.M.



KEY SECTION



KEYPLAN



FLOOR PLAN 1. All dimensions are in imperial and metric, and measured from finish to finish excluding construction tolerances. 2. All materials, dimensions, and drawings are approximate only. 3. Information is subject to change without notice, at developer's absolute discretion. 4. Actual area may vary from the stated area. Drawings not to scale. 6. All images used are for illustrative purposes only and do not represent the actual size, features, specifications, fittings, and furnishings. 7. The developer reserves the right to make revisions / alterations, at it's absolute discretion, without any liability whatsoever.

EMAAR

PALACE

RESIDENCES HILLSIDE

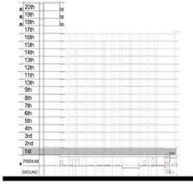
DUBAI HILLS ESTATE

2 BEDROOM TYPE A2

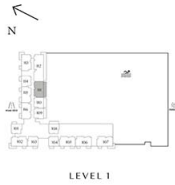
UNIT 111		
SUITE AREA	936.89 SQ.FT.	87.04 SQ.M.
BALCONY AREA	253.81 SQ.FT.	23.58 SQ.M.
TOTAL AREA	1190.70 SQ.FT.	110.62 SQ.M.



KEY SECTION



KEYPLAN



LEVEL 1

FLOOR PLAN 1. All dimensions are in imperial and metric, and measured from finish to finish excluding construction tolerances. 2. All materials, dimensions, and drawings are approximate only. 3. Information is subject to change without notice, at developer's absolute discretion. 4. Actual area may vary from the stated area. Drawings not to scale. 6. All images used are for illustrative purposes only and do not represent the actual size, features, specifications, fittings, and furnishings. 7. The developer reserves the right to make revisions / alterations, at it's absolute discretion, without any liability whatsoever.

EMAAR

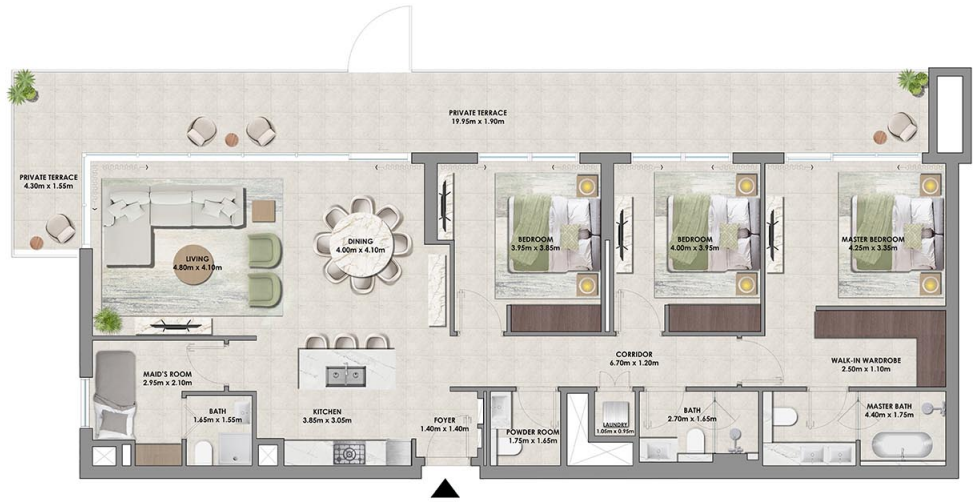
PALACE

RESIDENCES HILLSIDE

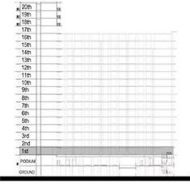
DUBAI HILLS ESTATE

3 BEDROOM TYPE A2

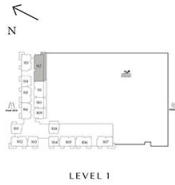
	UNIT 112	
SUITE AREA	1587.35 SQ.FT.	147.47 SQ.M.
BALCONY AREA	522.80 SQ.FT.	48.57 SQ.M.
TOTAL AREA	2110.15 SQ.FT.	196.04 SQ.M.



KEY SECTION



KEYPLAN



LEVEL 1

FLOOR PLAN 1. All dimensions are in imperial and metric, and measured from finish to finish excluding construction tolerances. 2. All materials, dimensions, and drawings are approximate only. 3. Information is subject to change without notice, at developer's absolute discretion. 4. Actual area may vary from the stated area. Drawings not to scale. 6. All images used are for illustrative purposes only and do not represent the actual size, features, specifications, fittings, and furnishings. 7. The developer reserves the right to make revisions / alterations, at it's absolute discretion, without any liability whatsoever.

EMAAR

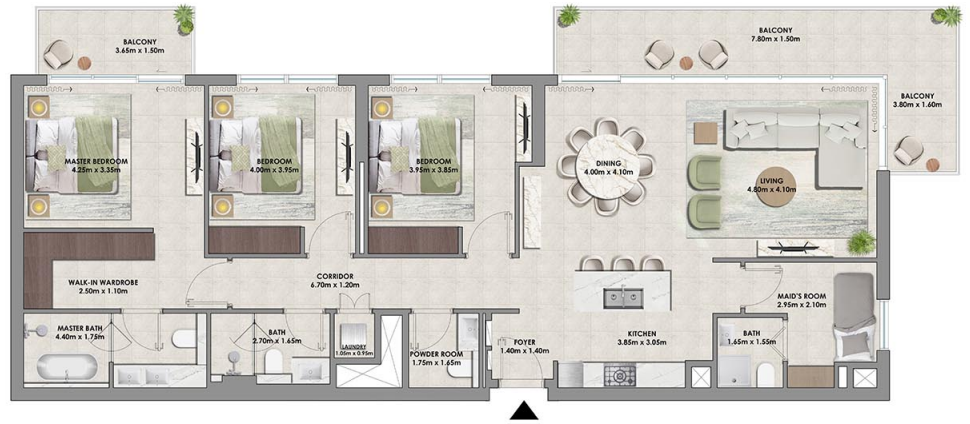
PALACE
RESIDENCES
HILLSIDE

DUBAI HILLS ESTATE

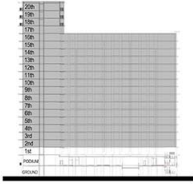
3 BEDROOM TYPE A

UNIT 208, 308, 408, 508, 608, 708, 808, 908, 1008, 1108, 1208, 1308, 1408, 1508, 1608, 1708, 1808, 1908, 2008

SUITE AREA	1587.46 SQ.FT.	147.48 SQ.M.
BALCONY AREA	294.59 SQ.FT.	27.37 SQ.M.
TOTAL AREA	1882.05 SQ.FT.	174.85 SQ.M.



KEY SECTION



KEYPLAN



FLOOR PLAN 1. All dimensions are in imperial and metric, and measured from finish to finish excluding construction tolerances. 2. All materials, dimensions, and drawings are approximate only. 3. Information is subject to change without notice, at developer's absolute discretion. 4. Actual area may vary from the stated area. 5. Drawings not to scale. 6. All images used are for illustrative purposes only and do not represent the actual size, features, specifications, fittings, and furnishings. 7. The developer reserves the right to make revisions / alterations, at it's absolute discretion, without any liability whatsoever.

PALACE

RESIDENCES HILLSIDE

DUBAI HILLS ESTATE

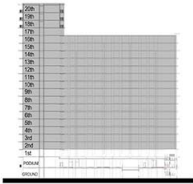
2 BEDROOM TYPE A1

UNIT 209, 309, 409, 509, 609, 709, 809, 909, 1009, 1109, 1209, 1309, 1409, 1509, 1609, 1709, 1809, 1909, 2009

SUITE AREA	937.00 SQ.FT.	87.05 SQ.M.
BALCONY AREA	124.56 SQ.FT.	11.57 SQ.M.
TOTAL AREA	1061.56 SQ.FT.	98.62 SQ.M.



KEY SECTION



KEYPLAN



FLOOR PLAN 1. All dimensions are in imperial and metric, and measured from finish to finish excluding construction tolerances. 2. All materials, dimensions, and drawings are approximate only. 3. Information is subject to change without notice, at developer's absolute discretion. 4. Actual area may vary from the stated area. Drawings not to scale. 6. All images used are for illustrative purposes only and do not represent the actual size, features, specifications, fittings, and furnishings. 7. The developer reserves the right to make revisions / alterations, at it's absolute discretion, without any liability whatsoever.

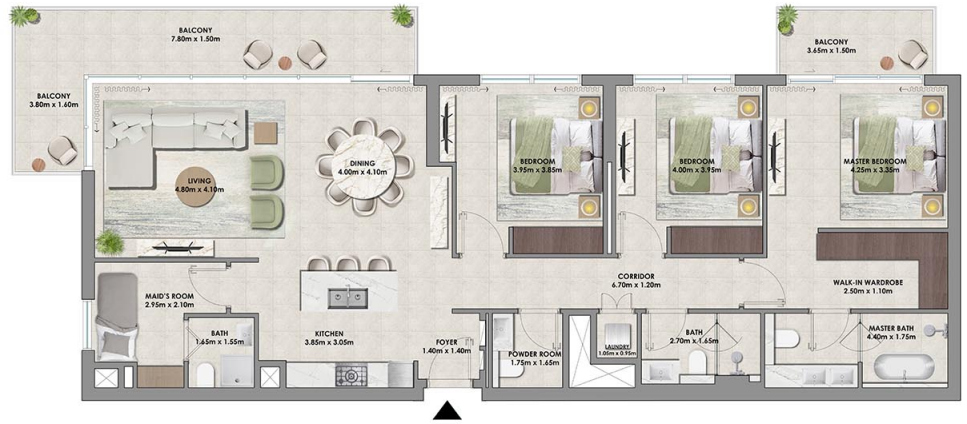
PALACE
RESIDENCES
HILLSIDE

DUBAI HILLS ESTATE

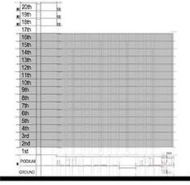
3 BEDROOM TYPE A1

UNIT 215, 315, 415, 515, 615, 715, 815, 915, 1015, 1115, 1215,
1315, 1415, 1515, 1615

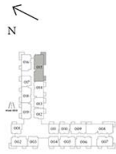
SUITE AREA	1587.46 SQ.FT.	147.48 SQ.M.
BALCONY AREA	294.61 SQ.FT.	27.37 SQ.M.
TOTAL AREA	1882.07 SQ.FT.	174.85 SQ.M.



KEY SECTION



KEYPLAN



LEVELS 2 TO 16

FLOOR PLAN 1. All dimensions are in imperial and metric, and measured from finish to finish excluding construction tolerances. 2. All materials, dimensions, and drawings are approximate only. 3. Information is subject to change without notice, at developer's absolute discretion. 4. Actual area may vary from the stated area. 5. Drawings not to scale. 6. All images used are for illustrative purposes only and do not represent the actual size, features, specifications, fittings, and furnishings. 7. The developer reserves the right to make revisions / alterations, at it's absolute discretion, without any liability whatsoever.

EMAAR

PALACE
RESIDENCES
HILLSIDE

DUBAI HILLS ESTATE

1 BEDROOM TYPE A

UNIT P01, 101, 103, 203, 210, 211, 212, 213, 303, 310, 311, 312, 313, 403, 410, 411, 412, 413, 503, 510, 511, 512, 513, 603, 610, 611, 612, 613, 703, 710, 711, 712, 713, 803, 810, 811, 812, 813, 903, 910, 911, 912, 913, 1003, 1010, 1011, 1012, 1013, 1103, 1110, 1111, 1112, 1113, 1203, 1210, 1211, 1212, 1213, 1303, 1310, 1311, 1312, 1313, 1403, 1410, 1411, 1412, 1413, 1503, 1510, 1511, 1512, 1513, 1603, 1610, 1611, 1612, 1613, 1703, 1710, 1711, 1803, 1810, 1811, 1903, 1910, 1911, 2003, 2010, 2011

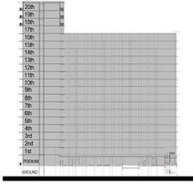
SUITE AREA	610.05 SQ.FT.	56.68 SQ.M.
BALCONY AREA	70.40 SQ.FT.	6.54 SQ.M.
TOTAL AREA	680.44 SQ.FT.	63.22 SQ.M.

UNIT 201, 301, 401, 501, 601, 701, 801, 901, 1001, 1101, 1201, 1301, 1401, 1501, 1601, 1701, 1801, 1901, 2001

SUITE AREA	614.94 SQ.FT.	57.13 SQ.M.
BALCONY AREA	70.40 SQ.FT.	6.54 SQ.M.
TOTAL AREA	685.34 SQ.FT.	63.67 SQ.M.



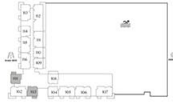
KEY SECTION



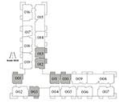
KEYPLAN



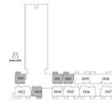
PODIUM LEVEL



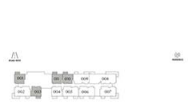
LEVEL 1



LEVELS 2 TO 16



LEVEL 17



LEVELS 18-20

FLOOR PLAN 1. All dimensions are in imperial and metric, and measured from finish to finish excluding construction tolerances. 2. All materials, dimensions, and drawings are approximate only. 3. Information is subject to change without notice, at developer's absolute discretion. 4. Actual area may vary from the stated area. Drawings not to scale. 6. All images used are for illustrative purposes only and do not represent the actual size, features, specifications, fittings, and furnishings. 7. The developer reserves the right to make revisions / alterations, at it's absolute discretion, without any liability whatsoever.

PALACE
RESIDENCES
HILLSIDE

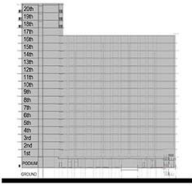
DUBAI HILLS ESTATE

2 BEDROOM TYPE C

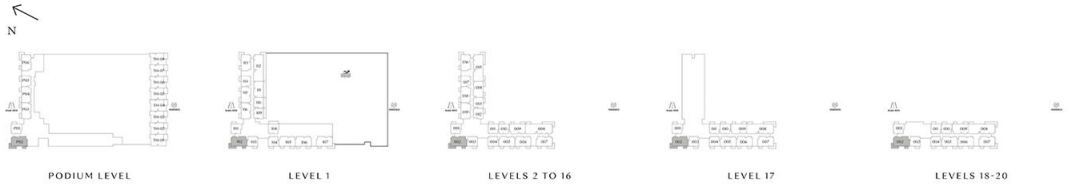
UNIT P02		
SUITE AREA	930.00 SQ.FT.	86.40 SQ.M.
BALCONY AREA	208.93 SQ.FT.	19.41 SQ.M.
TOTAL AREA	1138.93 SQ.FT.	105.81 SQ.M.
UNIT 102, 202, 302, 402, 502, 602, 702, 802, 902, 1002, 1102, 1202, 1302, 1402, 1502, 1602, 1702, 1802, 1902, 2002		
SUITE AREA	937.85 SQ.FT.	87.13 SQ.M.
BALCONY AREA	208.95 SQ.FT.	19.41 SQ.M.
TOTAL AREA	1146.81 SQ.FT.	106.54 SQ.M.



KEY SECTION



KEYPLAN



FLOOR PLAN 1. All dimensions are in imperial and metric, and measured from finish to finish excluding construction tolerances. 2. All materials, dimensions, and drawings are approximate only. 3. Information is subject to change without notice, at developer's absolute discretion. 4. Actual area may vary from the stated area. 5. Drawings not to scale. 6. All images used are for illustrative purposes only and do not represent the actual size, features, specifications, fittings, and furnishings. 7. The developer reserves the right to make revisions / alterations, at it's absolute discretion, without any liability whatsoever.

PALACE
RESIDENCES
HILLSIDE

DUBAI HILLS ESTATE

2 BEDROOM TYPE A

UNIT P03, P04, 105, 106, 115, 205, 206, 214, 218, 305, 306, 314, 318, 405, 406, 414, 418, 505, 506, 514, 518, 605, 606, 614, 618, 705, 706, 714, 718, 805, 806, 814, 818, 905, 906, 914, 918, 1005, 1006, 1014, 1018, 1105, 1106, 1114, 1118, 1205, 1206, 1214, 1218, 1305, 1306, 1314, 1318, 1405, 1406, 1414, 1418, 1505, 1506, 1514, 1518, 1605, 1606, 1614, 1618, 1705, 1706, 1805, 1806, 1905, 1906, 2005, 2006

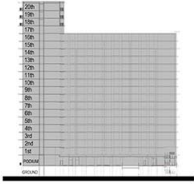
SUITE AREA	936.79 SQ.FT.	87.03 SQ.M.
BALCONY AREA	124.60 SQ.FT.	11.58 SQ.M.
TOTAL AREA	1061.39 SQ.FT.	98.61 SQ.M.

UNIT 116, 219, 319, 419, 519, 619, 719, 819, 919, 1019, 1119, 1219, 1319, 1419, 1519, 1619

SUITE AREA	937.00 SQ.FT.	87.05 SQ.M.
BALCONY AREA	128.20 SQ.FT.	11.91 SQ.M.
TOTAL AREA	1065.20 SQ.FT.	98.96 SQ.M.



KEY SECTION



KEYPLAN



FLOOR PLAN 1. All dimensions are in imperial and metric, and measured from finish to finish excluding construction tolerances. 2. All materials, dimensions, and drawings are approximate only. 3. Information is subject to change without notice, at developer's absolute discretion. 4. Actual area may vary from the stated area. Drawings not to scale. 6. All images used are for illustrative purposes only and do not represent the actual size, features, specifications, fittings, and furnishings. 7. The developer reserves the right to make revisions / alterations, at it's absolute discretion, without any liability whatsoever.

PALACE
RESIDENCES
HILLSIDE

DUBAI HILLS ESTATE

1 BEDROOM TYPE A1

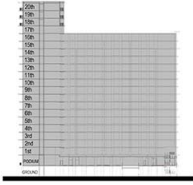
UNIT P05		
SUITE AREA	605.25 SQ.FT.	56.23 SQ.M.
BALCONY AREA	70.50 SQ.FT.	6.55 SQ.M.
TOTAL AREA	675.76 SQ.FT.	62.78 SQ.M.

UNIT 104, 114, 204, 217, 304, 317, 404, 417, 504, 517, 604, 617, 704, 717, 804, 817, 904, 917, 1004, 1017, 1104, 1117, 1204, 1217, 1304, 1317, 1404, 1417, 1504, 1517, 1604, 1617, 1704, 1804, 1904, 2004

SUITE AREA	610.52 SQ.FT.	56.72 SQ.M.
BALCONY AREA	70.40 SQ.FT.	6.54 SQ.M.
TOTAL AREA	680.91 SQ.FT.	63.26 SQ.M.



KEY SECTION



KEYPLAN



FLOOR PLAN 1. All dimensions are in imperial and metric, and measured from finish to finish excluding construction tolerances. 2. All materials, dimensions, and drawings are approximate only. 3. Information is subject to change without notice, at developer's absolute discretion. 4. Actual area may vary from the stated area. Drawings not to scale. 6. All images used are for illustrative purposes only and do not represent the actual size, features, specifications, fittings, and furnishings. 7. The developer reserves the right to make revisions / alterations, at it's absolute discretion, without any liability whatsoever.

EMAAR

PALACE
RESIDENCES
HILLSIDE

DUBAI HILLS ESTATE

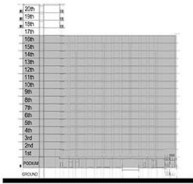
2 BEDROOM TYPE B1

UNIT P06		
SUITE AREA	935.02 SQ.FT.	86.68 SQ.M.
BALCONY AREA	209.04 SQ.FT.	19.42 SQ.M.
TOTAL AREA	1142.05 SQ.FT.	106.10 SQ.M.

UNIT 113, 216, 316, 416, 516, 616, 716, 816, 916, 1016, 1116, 1216, 1316, 1416, 1516, 1616		
SUITE AREA	938.11 SQ.FT.	87.15 SQ.M.
BALCONY AREA	209.04 SQ.FT.	19.42 SQ.M.
TOTAL AREA	1147.15 SQ.FT.	106.57 SQ.M.



KEY SECTION



KEYPLAN



FLOOR PLAN 1. All dimensions are in imperial and metric, and measured from finish to finish excluding construction tolerances. 2. All materials, dimensions, and drawings are approximate only. 3. Information is subject to change without notice, at developer's absolute discretion. 4. Actual area may vary from the stated area. Drawings not to scale. 6. All images used are for illustrative purposes only and do not represent the actual size, features, specifications, fittings, and furnishings. 7. The developer reserves the right to make revisions / alterations, at it's absolute discretion, without any liability whatsoever.

EMAAR

CONTACT US



Call Us [+971 4 248 3400](tel:+97142483400)



WhatsApp [+971 55 162 3236](https://wa.me/971551623236)

TANAMI
PROPERTIES