

# Peninsula Five - Apartment

A

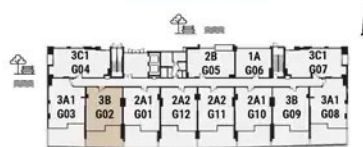
3 BEDROOM

BLOCK 2 DUPLEX | Type B | Unit G02



First Floor

Apartment Area	193.91 m <sup>2</sup>	2,087 ft <sup>2</sup>
Balcony Area	48.07 m <sup>2</sup>	518 ft <sup>2</sup>
<b>Total Area</b>	<b>241.98 m<sup>2</sup></b>	<b>2,605 ft<sup>2</sup></b>



Ground

# A

## 3 BEDROOM

BLOCK 2 DUPLEX | Type D2 | Unit 401



Fourth Floor



Fifth Floor



Fifth Floor



Fourth Floor

Apartment Area	187.82 m <sup>2</sup>	2,022 ft <sup>2</sup>
Balcony Area	24.59 m <sup>2</sup>	264 ft <sup>2</sup>
<b>Total Area</b>	<b>212.41 m<sup>2</sup></b>	<b>2,286 ft<sup>2</sup></b>

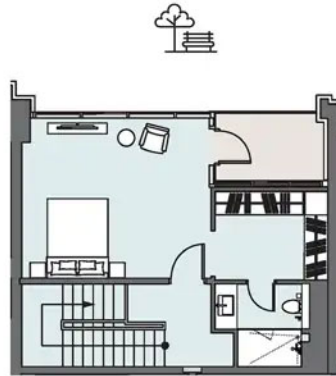
# A1

## 1 BEDROOM

BLOCK 2 DUPLEX | Type A | Unit G06



Ground

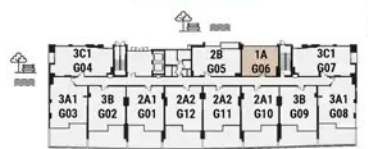


First Floor



First Floor

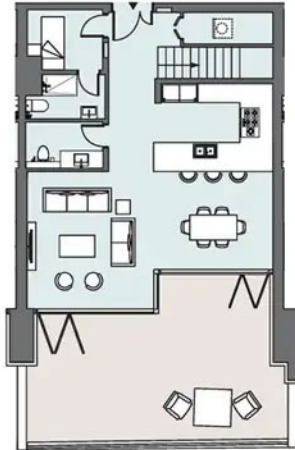
Apartment Area	105.88 m <sup>2</sup>	1,140 ft <sup>2</sup>
Balcony Area	6.46 m <sup>2</sup>	69 ft <sup>2</sup>
<b>Total Area</b>	<b>112.34 m<sup>2</sup></b>	<b>1,209 ft<sup>2</sup></b>



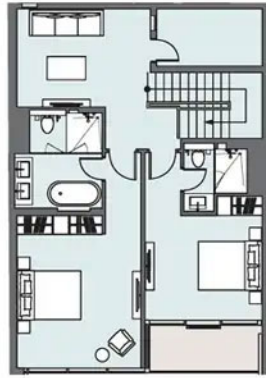
# A1

## 2 BEDROOM

BLOCK 2 DUPLEX | Type A2 | Unit G11



Ground



First Floor



First Floor

Apartment Area	172.35 m <sup>2</sup>	1,855 ft <sup>2</sup>
Balcony Area	51.12 m <sup>2</sup>	550 ft <sup>2</sup>
<b>Total Area</b>	<b>223.47 m<sup>2</sup></b>	<b>2,405 ft<sup>2</sup></b>

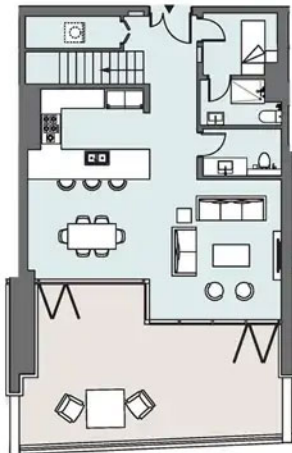


Ground

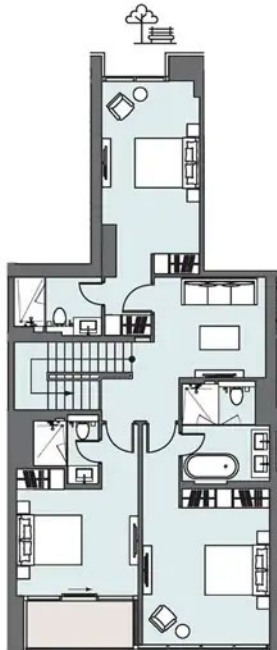
# A1

## 3 BEDROOM

BLOCK 2 DUPLEX | Type B | Unit G09



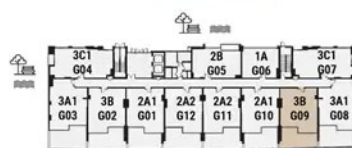
Ground



First Floor



First Floor



Apartment Area	193.88 m <sup>2</sup>	2,087 ft <sup>2</sup>
Balcony Area	46.41 m <sup>2</sup>	499 ft <sup>2</sup>
<b>Total Area</b>	<b>240.29 m<sup>2</sup></b>	<b>2,586 ft<sup>2</sup></b>

# A1

## 3 BEDROOM

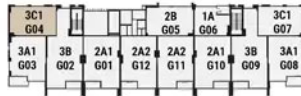
BLOCK 2 DUPLEX | Type C1 | Unit G04



Ground



First Floor



First Floor

Apartment Area	161.92 m <sup>2</sup>	1,743 ft <sup>2</sup>
Balcony Area	5.41 m <sup>2</sup>	58 ft <sup>2</sup>
<b>Total Area</b>	<b>167.33 m<sup>2</sup></b>	<b>1,801 ft<sup>2</sup></b>



Ground

# A1

## 3 BEDROOM

Tower | Type A1 | Unit 01  
Floors 23-26 & 28-31



Apartment Area	145.45 m <sup>2</sup>	1,566 ft <sup>2</sup>
Balcony Area	14.49 m <sup>2</sup>	156 ft <sup>2</sup>
<b>Total Area</b>	<b>159.94 m<sup>2</sup></b>	<b>1,722 ft<sup>2</sup></b>



Floors 23-26 & 28-31

# A1

## 2 BEDROOM

Tower | Type A1 | Unit 02  
 Floors 4-6, 8-11, 13-16 & 18-19



Apartment Area	110.94 m <sup>2</sup>	1,194 ft <sup>2</sup>
Balcony Area	14.69 m <sup>2</sup>	158 ft <sup>2</sup>
<b>Total Area</b>	<b>125.63 m<sup>2</sup></b>	<b>1,352 ft<sup>2</sup></b>

Floors 4-6, 8-11, 13-16 & 18-19

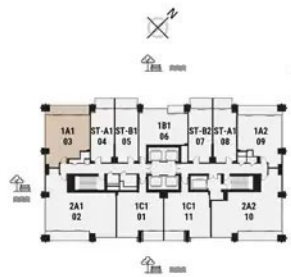
# A1

## 1 BEDROOM

Tower | Type A1 | Unit 03  
Floors 4-6, 8-11, 13-16 & 18-19



Apartment Area	67.06 m <sup>2</sup>	722 ft <sup>2</sup>
Balcony Area	14.26 m <sup>2</sup>	153 ft <sup>2</sup>
<b>Total Area</b>	<b>81.32 m<sup>2</sup></b>	<b>875 ft<sup>2</sup></b>



Floors 4-6, 8-11, 13-16 & 18-19

# A1

## 2 BEDROOM

Tower | Type A1 | Unit 02  
Floors 4-6, 8-11, 13-16 & 18-19



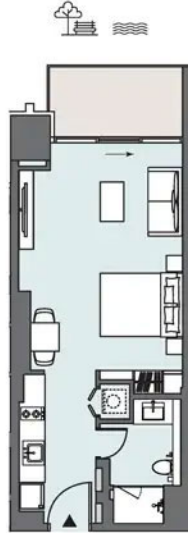
Apartment Area	110.94 m <sup>2</sup>	1,194 ft <sup>2</sup>
Balcony Area	14.69 m <sup>2</sup>	158 ft <sup>2</sup>
<b>Total Area</b>	<b>125.63 m<sup>2</sup></b>	<b>1,352 ft<sup>2</sup></b>

Floors 4-6, 8-11, 13-16 & 18-19

# A1

## STUDIO APARTMENT

Tower | Type A1 | Unit 04  
Floors 4-6, 8-11, 13-16 & 18-19



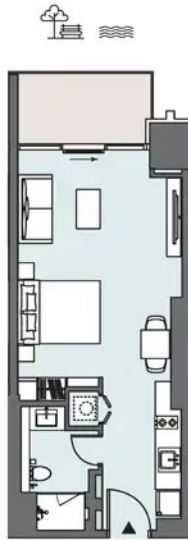
Apartment Area	41.31 m <sup>2</sup>	445 ft <sup>2</sup>
Balcony Area	6.72 m <sup>2</sup>	72 ft <sup>2</sup>
<b>Total Area</b>	<b>48.03 m<sup>2</sup></b>	<b>517 ft<sup>2</sup></b>



Floors 4-6, 8-11, 13-16 & 18-19

# A1

**STUDIO APARTMENT**  
Tower | Type A1 | Unit 08  
Floors 4-6, 8-11, 13-16 & 18-19



Apartment Area	41.23 m <sup>2</sup>	444 ft <sup>2</sup>
Balcony Area	6.8 m <sup>2</sup>	73 ft <sup>2</sup>
<b>Total Area</b>	<b>48.03 m<sup>2</sup></b>	<b>517 ft<sup>2</sup></b>

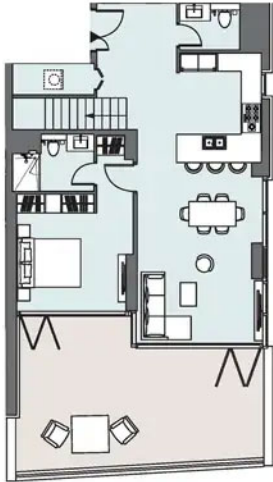


Floors 4-6, 8-11, 13-16 & 18-19

# A2

## 3 BEDROOM

BLOCK 2 DUPLEX | Type A1 | Unit G08



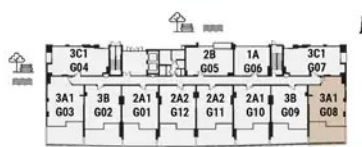
Ground



First Floor



First Floor



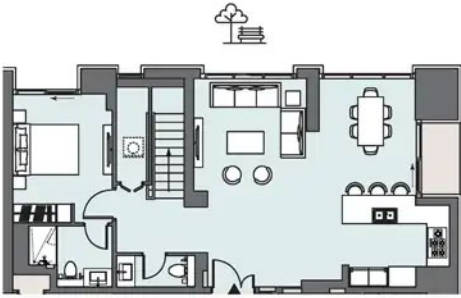
Ground

Apartment Area	169.17 m <sup>2</sup>	1,821 ft <sup>2</sup>
Balcony Area	49.01 m <sup>2</sup>	527 ft <sup>2</sup>
<b>Total Area</b>	<b>218.18 m<sup>2</sup></b>	<b>2,348 ft<sup>2</sup></b>

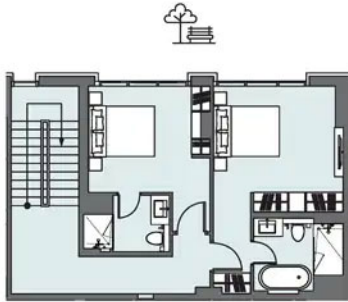
# A2

## 3 BEDROOM

BLOCK 2 DUPLEX | Type C1 | Unit G07



Ground

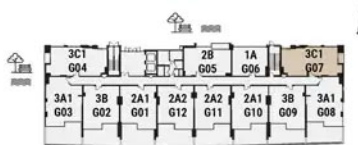


First Floor



First Floor

Apartment Area	162.05 m <sup>2</sup>	1,744 ft <sup>2</sup>
Balcony Area	5.4 m <sup>2</sup>	58 ft <sup>2</sup>
<b>Total Area</b>	<b>167.45 m<sup>2</sup></b>	<b>1,802 ft<sup>2</sup></b>

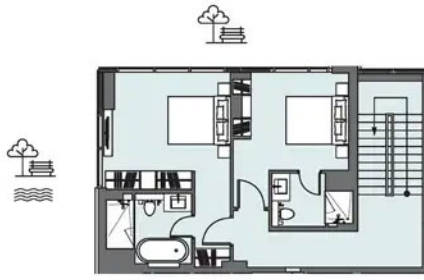


Ground

# A2

## 3 BEDROOM

BLOCK 2 DUPLEX | Type C2 | Unit 204



Third Floor

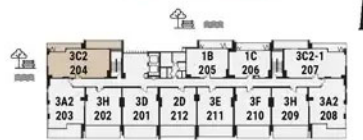


Second Floor



Third Floor

Apartment Area	163.16 m <sup>2</sup>	1,756 ft <sup>2</sup>
Balcony Area	30.46 m <sup>2</sup>	328 ft <sup>2</sup>
<b>Total Area</b>	<b>193.62 m<sup>2</sup></b>	<b>2,084 ft<sup>2</sup></b>



Second Floor

# A2

## 3 BEDROOM

BLOCK 2 DUPLEX | Type E | Unit 211



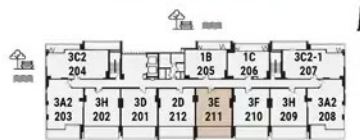
Second Floor

Third Floor



Third Floor

Apartment Area	218.62 m <sup>2</sup>	2,353 ft <sup>2</sup>
Balcony Area	38.42 m <sup>2</sup>	414 ft <sup>2</sup>
<b>Total Area</b>	<b>257.04 m<sup>2</sup></b>	<b>2,767 ft<sup>2</sup></b>



Second Floor

# A2

## 1 BEDROOM

Tower | Type A2 | Unit 09  
Floors 4-6, 8-11, 13-16 & 18-19



Apartment Area	64.95 m <sup>2</sup>	699 ft <sup>2</sup>
Balcony Area	14.45 m <sup>2</sup>	156 ft <sup>2</sup>
<b>Total Area</b>	<b>79.40 m<sup>2</sup></b>	<b>855 ft<sup>2</sup></b>



Floors 4-6, 8-11, 13-16 & 18-19

# A2

## 2 BEDROOM

Tower | Type A2 | Unit 10  
Floors 4-6, 8-11, 13-16 & 18-19



Apartment Area	106.75 m <sup>2</sup>	1,149 ft <sup>2</sup>
Balcony Area	14.49 m <sup>2</sup>	156 ft <sup>2</sup>
<b>Total Area</b>	<b>121.24 m<sup>2</sup></b>	<b>1,305 ft<sup>2</sup></b>



Floors 4-6, 8-11, 13-16 & 18-19

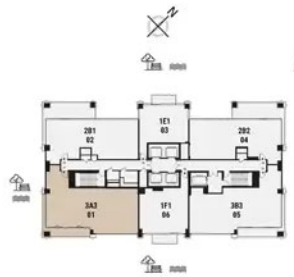
# A3

## 3 BEDROOM

Tower | Type A3 | Unit 01  
Floors 33-36



Apartment Area	145.98 m <sup>2</sup>	1,571 ft <sup>2</sup>
Balcony Area	18.1 m <sup>2</sup>	195 ft <sup>2</sup>
<b>Total Area</b>	<b>164.08 m<sup>2</sup></b>	<b>1,766 ft<sup>2</sup></b>



Floors 33-36

# A3

## 2 BEDROOM

Tower | Type A3 | Unit 02  
Floors 7, 12 & 17



Apartment Area	110.76 m <sup>2</sup>	1,192 ft <sup>2</sup>
Balcony Area	17.1 m <sup>2</sup>	184 ft <sup>2</sup>
<b>Total Area</b>	<b>127.86 m<sup>2</sup></b>	<b>1,376 ft<sup>2</sup></b>

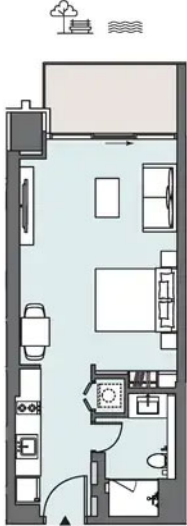


Floors 7, 12 & 17

# A3

## STUDIO APARTMENT

Tower | Type A3 | Unit 03  
 Floors 23-26 & 28-31



Apartment Area	41.41 m <sup>2</sup>	446 ft <sup>2</sup>
Balcony Area	6.72 m <sup>2</sup>	72 ft <sup>2</sup>
<b>Total Area</b>	<b>48.13 m<sup>2</sup></b>	<b>518 ft<sup>2</sup></b>

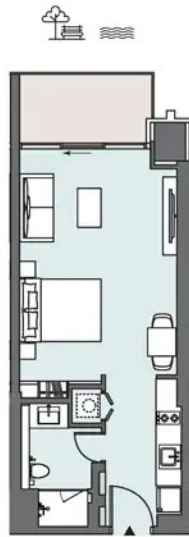


Floors 23-26 & 28-31

# A3

## STUDIO APARTMENT

Tower | Type A3 | Unit 07  
Floors 23-26 & 28-31



Apartment Area	41.41 m <sup>2</sup>	446 ft <sup>2</sup>
Balcony Area	6.72 m <sup>2</sup>	72 ft <sup>2</sup>
<b>Total Area</b>	<b>48.13 m<sup>2</sup></b>	<b>518 ft<sup>2</sup></b>

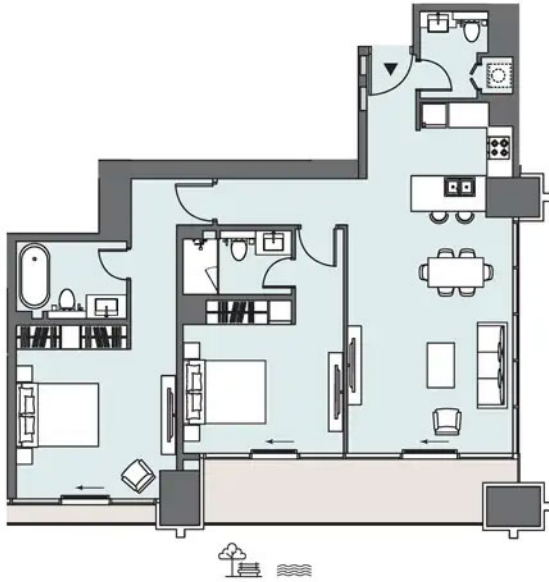


Floors 23-26 & 28-31

# A4

## 2 BEDROOM

Tower | Type A4 | Unit 10  
Floors 7, 12 & 17



Apartment Area	106.34 m <sup>2</sup>	1,145 ft <sup>2</sup>
Balcony Area	17.09 m <sup>2</sup>	184 ft <sup>2</sup>
<b>Total Area</b>	<b>123.43 m<sup>2</sup></b>	<b>1,329 ft<sup>2</sup></b>



Floors 7, 12 & 17

# A4

## 3 BEDROOM

Tower | Type A4 | Unit 3201



Apartment Area	145.77 m <sup>2</sup>	1,569 ft <sup>2</sup>
Balcony Area	22.87 m <sup>2</sup>	246 ft <sup>2</sup>
<b>Total Area</b>	<b>168.64 m<sup>2</sup></b>	<b>1,815 ft<sup>2</sup></b>



32<sup>nd</sup> Floor

# A5

## 1 BEDROOM

Tower | Type A5 | Unit 02  
Floors 23-26 & 28-31



Apartment Area	67.31 m <sup>2</sup>	725 ft <sup>2</sup>
Balcony Area	14.22 m <sup>2</sup>	153 ft <sup>2</sup>
<b>Total Area</b>	<b>81.53 m<sup>2</sup></b>	<b>878 ft<sup>2</sup></b>



Floors 23-26 & 28-31

# A5

## 1 BEDROOM

Tower | Type A5 | Unit 08  
Floors 23-26 & 28-31



Apartment Area	67.32 m <sup>2</sup>	725 ft <sup>2</sup>
Balcony Area	14.23 m <sup>2</sup>	153 ft <sup>2</sup>
<b>Total Area</b>	<b>81.55 m<sup>2</sup></b>	<b>878 ft<sup>2</sup></b>

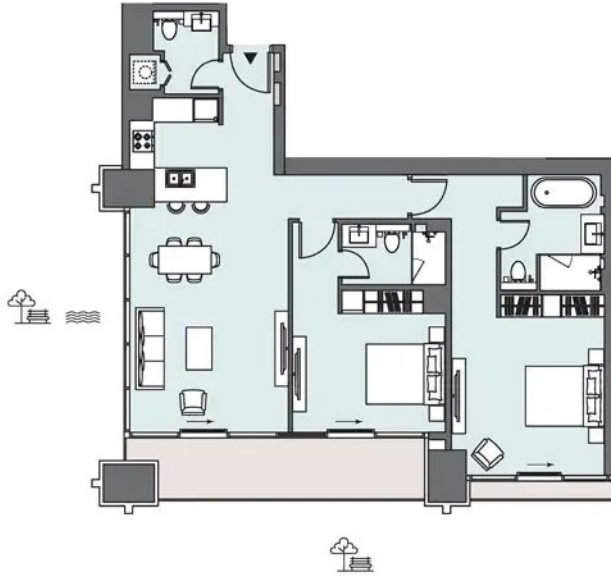


Floors 23-26 & 28-31

# A5

## 2 BEDROOM

Tower | Type A5 | Unit 302



Apartment Area	110.57 m <sup>2</sup>	1,190 ft <sup>2</sup>
Balcony Area	17.26 m <sup>2</sup>	186 ft <sup>2</sup>
<b>Total Area</b>	<b>127.83 m<sup>2</sup></b>	<b>1,376 ft<sup>2</sup></b>



Third Floor

# A6

## 2 BEDROOM

Tower | Type A6 | Unit 309



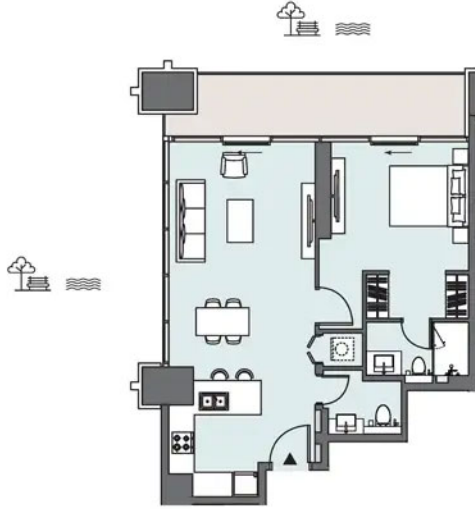
Apartment Area	106.36 m <sup>2</sup>	1,145 ft <sup>2</sup>
Balcony Area	17.09 m <sup>2</sup>	184 ft <sup>2</sup>
<b>Total Area</b>	<b>123.45 m<sup>2</sup></b>	<b>1,329 ft<sup>2</sup></b>



# A7

## 1 BEDROOM

Tower | Type A7 | Unit 303



Apartment Area	66.88 m <sup>2</sup>	720 ft <sup>2</sup>
Balcony Area	14.46 m <sup>2</sup>	156 ft <sup>2</sup>
<b>Total Area</b>	<b>81.34 m<sup>2</sup></b>	<b>876 ft<sup>2</sup></b>

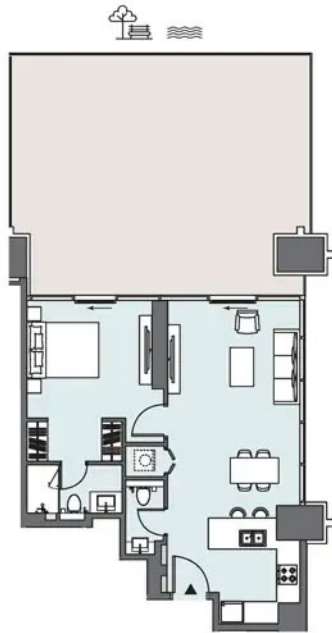


Third Floor

# A8

## 1 BEDROOM

Tower | Type A8 | Unit 308



Apartment Area	64.98 m <sup>2</sup>	699 ft <sup>2</sup>
Balcony Area	61 m <sup>2</sup>	657 ft <sup>2</sup>
<b>Total Area</b>	<b>125.98 m<sup>2</sup></b>	<b>1,356 ft<sup>2</sup></b>

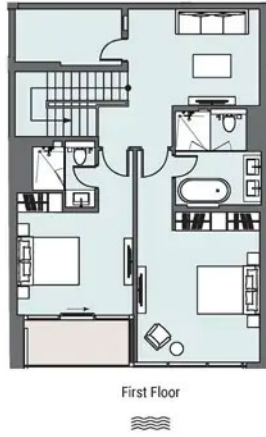
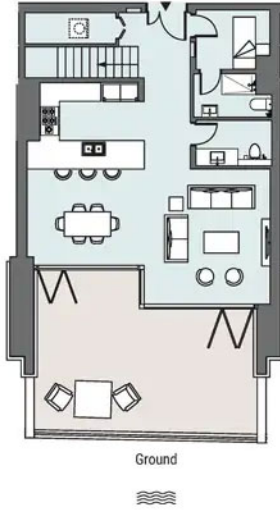


Third Floor

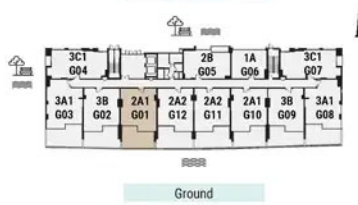
# B

## 2 BEDROOM

BLOCK 2 DUPLEX | Type A1 | Unit G01



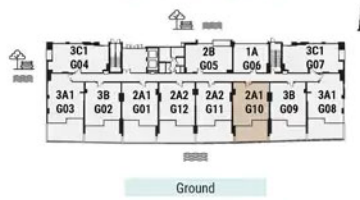
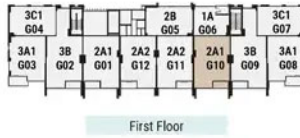
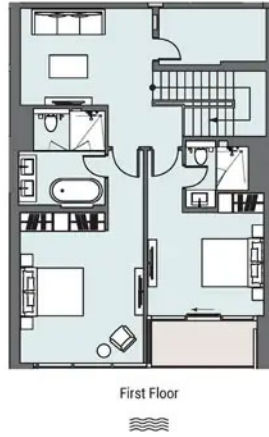
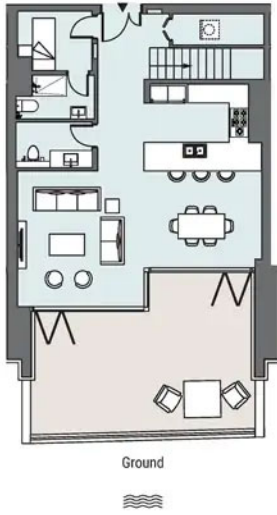
Apartment Area	173.08 m <sup>2</sup>	1,863 ft <sup>2</sup>
Balcony Area	46.84 m <sup>2</sup>	504ft <sup>2</sup>
<b>Total Area</b>	<b>219.92 m<sup>2</sup></b>	<b>2,367 ft<sup>2</sup></b>



# B

## 2 BEDROOM

BLOCK 2 DUPLEX | Type A1 | Unit G10

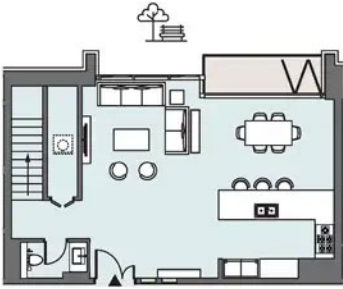


Apartment Area	173.13 m <sup>2</sup>	1,864 ft <sup>2</sup>
Balcony Area	45.96 m <sup>2</sup>	494 ft <sup>2</sup>
<b>Total Area</b>	<b>219.09 m<sup>2</sup></b>	<b>2,358 ft<sup>2</sup></b>

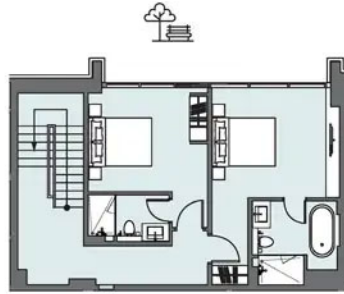
# B

## 2 BEDROOM

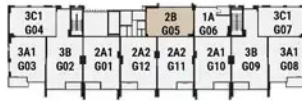
BLOCK 2 DUPLEX | Type B | Unit G05



Ground

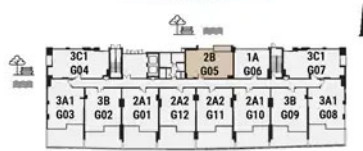


First Floor



First Floor

Apartment Area	145.04 m <sup>2</sup>	1,561 ft <sup>2</sup>
Balcony Area	5.73 m <sup>2</sup>	62 ft <sup>2</sup>
<b>Total Area</b>	<b>150.77 m<sup>2</sup></b>	<b>1,623 ft<sup>2</sup></b>



Ground

# B

## 3 BEDROOM

BLOCK 2 DUPLEX | Type D | Unit 201



Second Floor

Third Floor



Third Floor

Apartment Area	187.77 m <sup>2</sup>	2,021 ft <sup>2</sup>
Balcony Area	31.03 m <sup>2</sup>	334 ft <sup>2</sup>
<b>Total Area</b>	<b>218.80 m<sup>2</sup></b>	<b>2,355 ft<sup>2</sup></b>



Second Floor

# B1

## 2 BEDROOM

Tower | Type B1 | Unit 02  
Floors 33-36



Apartment Area	118.63 m <sup>2</sup>	1,277 ft <sup>2</sup>
Balcony Area	30.94 m <sup>2</sup>	333 ft <sup>2</sup>
<b>Total Area</b>	<b>149.57 m<sup>2</sup></b>	<b>1,610 ft<sup>2</sup></b>

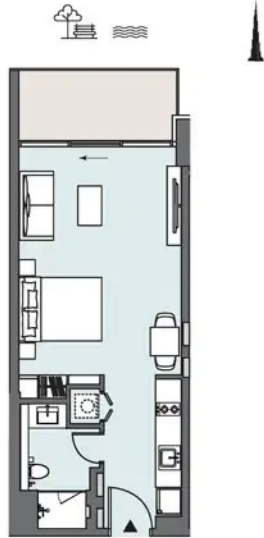


Floors 33-36

# B1

## STUDIO APARTMENT

Tower | Type B1 | Unit 05  
Floors 4-6, 8-11, 13-16 & 18-19



Apartment Area	41.54 m <sup>2</sup>	447 ft <sup>2</sup>
Balcony Area	7.82 m <sup>2</sup>	84 ft <sup>2</sup>
<b>Total Area</b>	<b>49.36 m<sup>2</sup></b>	<b>531 ft<sup>2</sup></b>



Floors 4-6, 8-11, 13-16 & 18-19

# B1

## 1 BEDROOM

Tower | Type B1 | Unit 06  
Floors 4-6, 8-11, 13-16 & 18-19



Apartment Area	60.19 m <sup>2</sup>	648 ft <sup>2</sup>
Balcony Area	5.05 m <sup>2</sup>	54 ft <sup>2</sup>
<b>Total Area</b>	<b>65.24 m<sup>2</sup></b>	<b>702 ft<sup>2</sup></b>



Floors 4-6, 8-11, 13-16 & 18-19

# B1

## 3 BEDROOM

Tower | Type B1 | Unit 09  
Floors 23-26 & 28-31



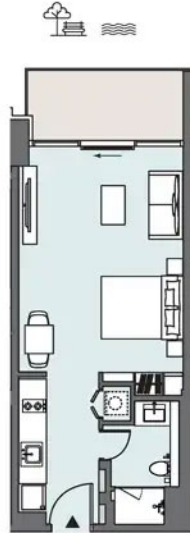
Apartment Area	141.91 m <sup>2</sup>	1,528 ft <sup>2</sup>
Balcony Area	14.49 m <sup>2</sup>	155 ft <sup>2</sup>
<b>Total Area</b>	<b>156.40 m<sup>2</sup></b>	<b>1,683 ft<sup>2</sup></b>

Floors 23-26 & 28-31

# B2

## STUDIO APARTMENT

Tower | Type B2 | Unit 07  
Floors 4-6, 8-11, 13-16 & 18-19



Apartment Area	42.35 m <sup>2</sup>	456 ft <sup>2</sup>
Balcony Area	7.93 m <sup>2</sup>	85 ft <sup>2</sup>
<b>Total Area</b>	<b>50.28 m<sup>2</sup></b>	<b>541 ft<sup>2</sup></b>



Floors 4-6, 8-11, 13-16 & 18-19

# B3

## 1 BEDROOM

Tower | Type B3 | Unit 05  
Floors 23-26 & 28-31



Apartment Area	61.66 m <sup>2</sup>	664 ft <sup>2</sup>
Balcony Area	4.78 m <sup>2</sup>	51 ft <sup>2</sup>
<b>Total Area</b>	<b>66.44 m<sup>2</sup></b>	<b>715 ft<sup>2</sup></b>



Floors 23-26 & 28-31

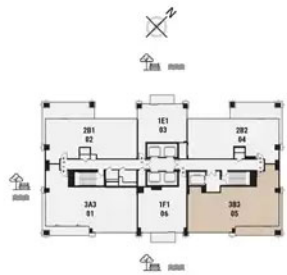
# B3

## 3 BEDROOM

Tower | Type B3 | Unit 05  
Floors 33-36



Apartment Area	142.51 m <sup>2</sup>	1,534 ft <sup>2</sup>
Balcony Area	18.11 m <sup>2</sup>	195 ft <sup>2</sup>
<b>Total Area</b>	<b>160.62 m<sup>2</sup></b>	<b>1,729 ft<sup>2</sup></b>

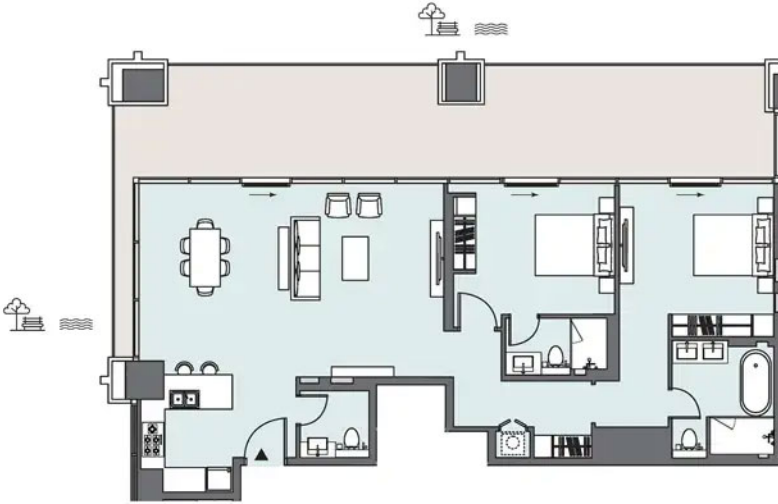


Floors 33-36

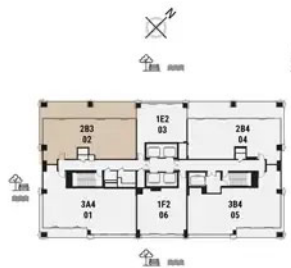
# B3

## 2 BEDROOM

Tower | Type B3 | Unit 3202



Apartment Area	118.36 m <sup>2</sup>	1,274 ft <sup>2</sup>
Balcony Area	54.6 m <sup>2</sup>	588 ft <sup>2</sup>
<b>Total Area</b>	<b>172.96 m<sup>2</sup></b>	<b>1,862 ft<sup>2</sup></b>

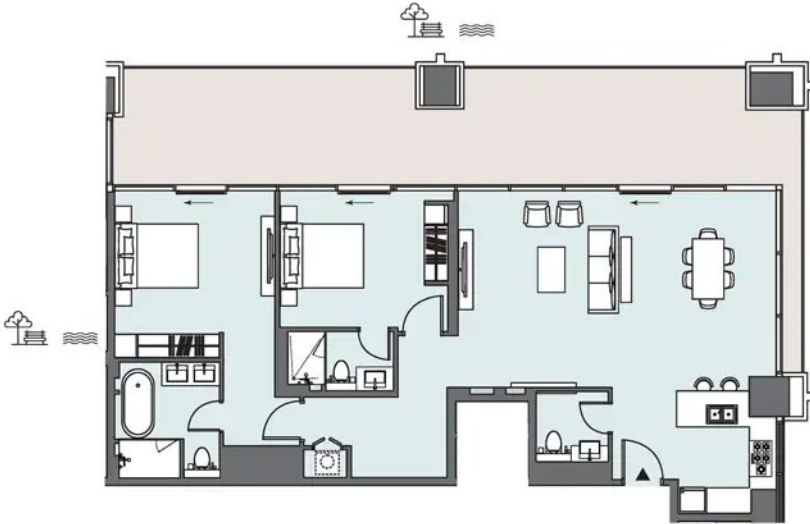


32<sup>nd</sup> Floor

# B4

## 2 BEDROOM

Tower | Type B4 | Unit 3204



Apartment Area	118.59 m <sup>2</sup>	1,276 ft <sup>2</sup>
Balcony Area	54.59 m <sup>2</sup>	588 ft <sup>2</sup>
<b>Total Area</b>	<b>173.18 m<sup>2</sup></b>	<b>1,864 ft<sup>2</sup></b>



32<sup>nd</sup> Floor

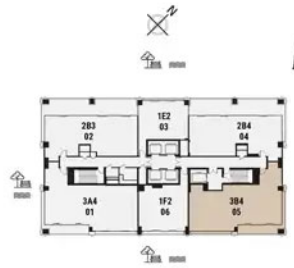
# B4

## 3 BEDROOM

Tower | Type B4 | Unit 3205



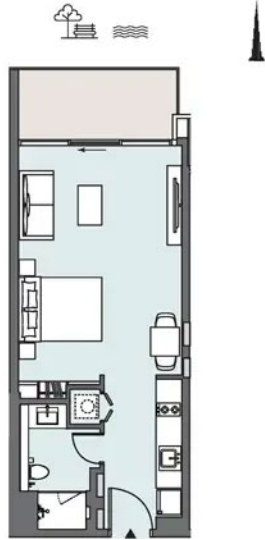
Apartment Area	142.28 m <sup>2</sup>	1,531 ft <sup>2</sup>
Balcony Area	22.88 m <sup>2</sup>	247 ft <sup>2</sup>
<b>Total Area</b>	<b>165.16 m<sup>2</sup></b>	<b>1,778 ft<sup>2</sup></b>



32<sup>nd</sup> Floor

# B5

**STUDIO APARTMENT**  
Tower | Type B5 | Unit 04  
Floors 23-26 & 28-31



Apartment Area	41.62 m <sup>2</sup>	448 ft <sup>2</sup>
Balcony Area	7.93 m <sup>2</sup>	85 ft <sup>2</sup>
<b>Total Area</b>	<b>49.55 m<sup>2</sup></b>	<b>533 ft<sup>2</sup></b>

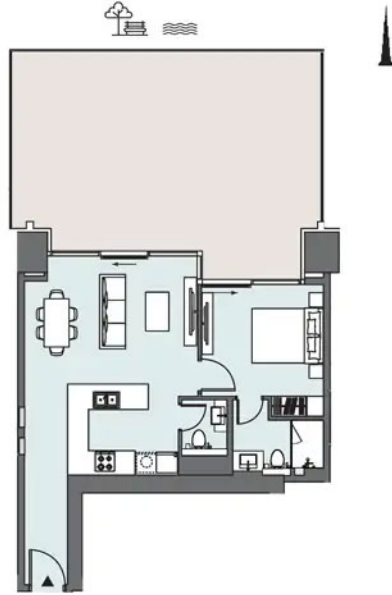


Floors 23-26 & 28-31

# B5

## 1 BEDROOM

Tower | Type B5 | Unit 306



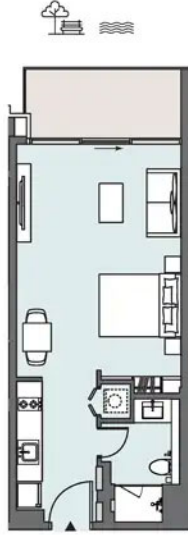
Apartment Area	59.94 m <sup>2</sup>	645 ft <sup>2</sup>
Balcony Area	56.21 m <sup>2</sup>	605 ft <sup>2</sup>
<b>Total Area</b>	<b>116.15 m<sup>2</sup></b>	<b>1,250 ft<sup>2</sup></b>



Third Floor

# B6

**STUDIO APARTMENT**  
Tower | Type B6 | Unit 06  
Floors 23-26 & 28-31



Apartment Area	42.52 m <sup>2</sup>	458 ft <sup>2</sup>
Balcony Area	7.93 m <sup>2</sup>	85 ft <sup>2</sup>
<b>Total Area</b>	<b>50.45 m<sup>2</sup></b>	<b>543 ft<sup>2</sup></b>



Floors 23-26 & 28-31

C

3 BEDROOM

BLOCK 2 DUPLEX | Type H | Unit 202



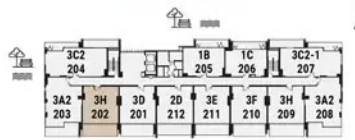
Second Floor

Third Floor



Third Floor

Apartment Area	177.06 m <sup>2</sup>	1,906 ft <sup>2</sup>
Balcony Area	32.62 m <sup>2</sup>	351 ft <sup>2</sup>
<b>Total Area</b>	<b>209.68 m<sup>2</sup></b>	<b>2,257 ft<sup>2</sup></b>



Second Floor

# C

## 2 BEDROOM

Tower | Type C | Unit 201



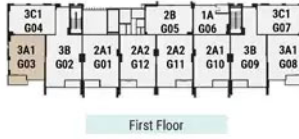
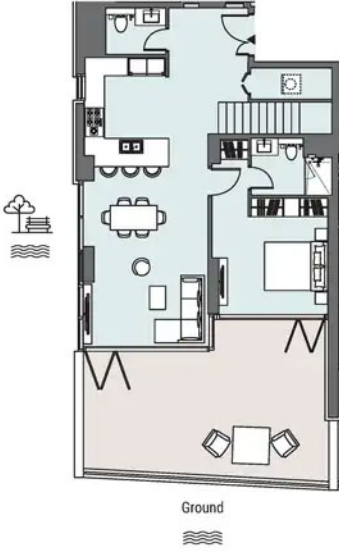
Apartment Area	107.88 m <sup>2</sup>	1,161 ft <sup>2</sup>
Balcony Area	N/A m <sup>2</sup>	N/A ft <sup>2</sup>
<b>Total Area</b>	<b>107.88 m<sup>2</sup></b>	<b>1,161 ft<sup>2</sup></b>

Second Floor

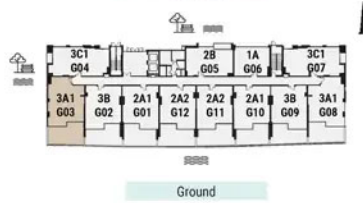
# C1

## 3 BEDROOM

BLOCK 2 DUPLEX | Type A1 | Unit G03



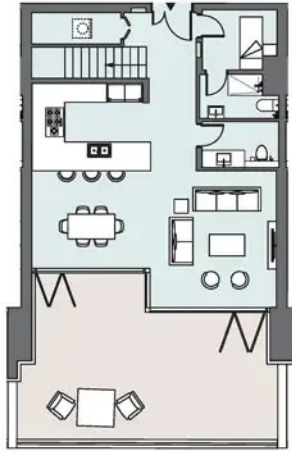
Apartment Area	168.9 m <sup>2</sup>	1,818 ft <sup>2</sup>
Balcony Area	51.1 m <sup>2</sup>	550 ft <sup>2</sup>
<b>Total Area</b>	<b>220.00 m<sup>2</sup></b>	<b>2,368 ft<sup>2</sup></b>



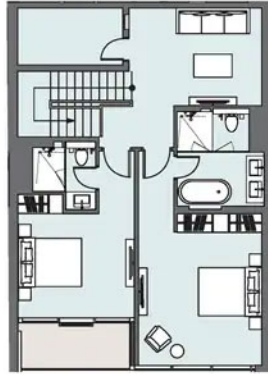
# C1

## 2 BEDROOM

BLOCK 2 DUPLEX | Type A2 | Unit G12



Ground

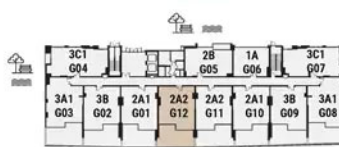


First Floor



First Floor

Apartment Area	172.53 m <sup>2</sup>	1,857 ft <sup>2</sup>
Balcony Area	51.12 m <sup>2</sup>	550 ft <sup>2</sup>
<b>Total Area</b>	<b>223.65 m<sup>2</sup></b>	<b>2,407 ft<sup>2</sup></b>



Ground

# C1

## 1 BEDROOM

Tower | Type C1 | Unit 01  
Floors 4-6, 8-11, 13-16 & 18-19



Apartment Area	68.74 m <sup>2</sup>	740 ft <sup>2</sup>
Balcony Area	7.42 m <sup>2</sup>	80 ft <sup>2</sup>
<b>Total Area</b>	<b>76.16 m<sup>2</sup></b>	<b>820 ft<sup>2</sup></b>

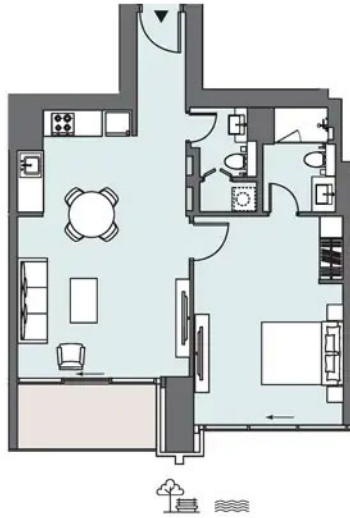


Floors 4-6, 8-11, 13-16 & 18-19

# C1

## 1 BEDROOM

Tower | Type C1 | Unit 11  
Floors 4-6, 8-11, 13-16 & 18-19



Apartment Area	68.07 m <sup>2</sup>	733 ft <sup>2</sup>
Balcony Area	7.41 m <sup>2</sup>	79 ft <sup>2</sup>
<b>Total Area</b>	<b>75.48 m<sup>2</sup></b>	<b>812 ft<sup>2</sup></b>



Floors 4-6, 8-11, 13-16 & 18-19

# D

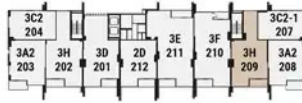
## 3 BEDROOM

BLOCK 2 DUPLEX | Type H | Unit 209



Second Floor

Third Floor



Third Floor

Apartment Area	176.93 m <sup>2</sup>	1,904 ft <sup>2</sup>
Balcony Area	32.62 m <sup>2</sup>	352 ft <sup>2</sup>
<b>Total Area</b>	<b>209.55 m<sup>2</sup></b>	<b>2,256 ft<sup>2</sup></b>



Second Floor

D

2 BEDROOM

Tower | Type D | Unit 203



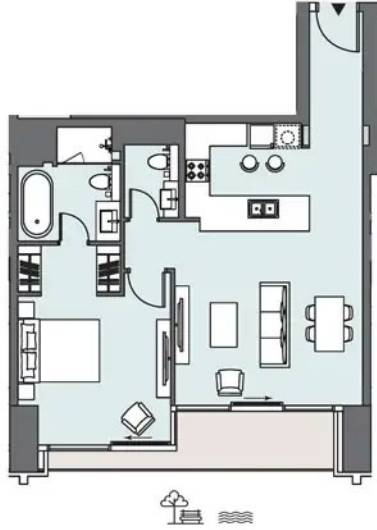
Apartment Area	117.96 m <sup>2</sup>	1,270 ft <sup>2</sup>
Balcony Area	N/A m <sup>2</sup>	N/A ft <sup>2</sup>
<b>Total Area</b>	<b>117.96 m<sup>2</sup></b>	<b>1,270 ft<sup>2</sup></b>

Second Floor

# D1

## 1 BEDROOM

Tower | Type D1 | Unit 10  
Floors 23-26 & 28-31



Apartment Area	73.55 m <sup>2</sup>	792 ft <sup>2</sup>
Balcony Area	9.57 m <sup>2</sup>	103 ft <sup>2</sup>
<b>Total Area</b>	<b>83.12 m<sup>2</sup></b>	<b>895 ft<sup>2</sup></b>

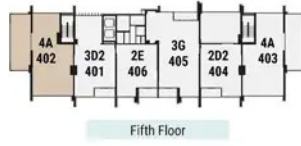
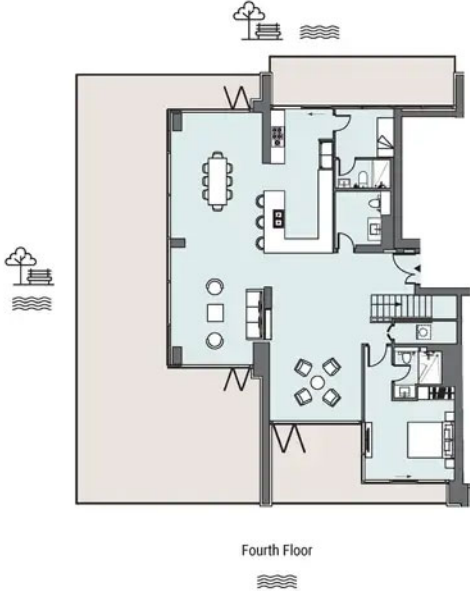


Floors 23-26 & 28-31

# D2

## 4 BEDROOM

BLOCK 2 DUPLEX | Type A | Unit 402

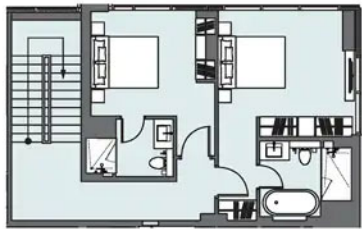
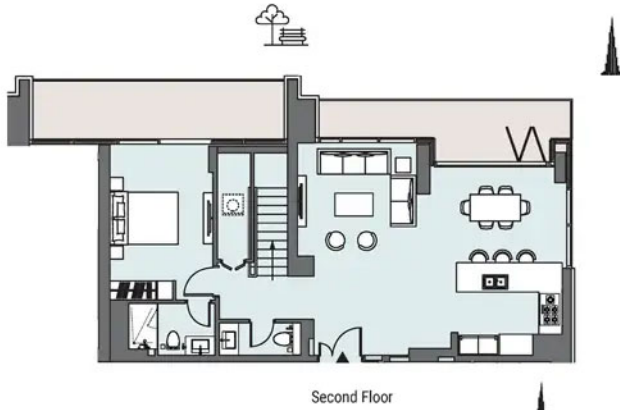


Apartment Area	288.8 m <sup>2</sup>	3,109 ft <sup>2</sup>
Balcony Area	150.61 m <sup>2</sup>	1,621 ft <sup>2</sup>
<b>Total Area</b>	<b>439.41 m<sup>2</sup></b>	<b>4,730 ft<sup>2</sup></b>

# E

## 3 BEDROOM

BLOCK 2 DUPLEX | Type C2-1 | Unit 207



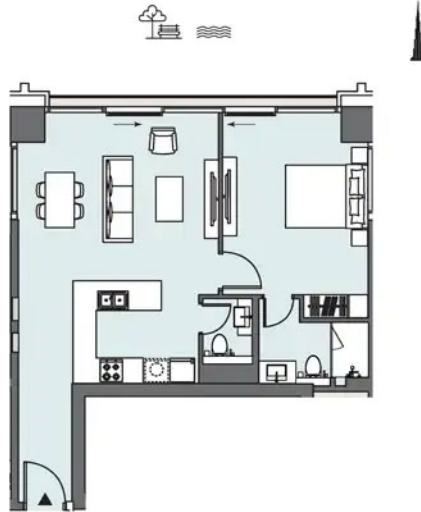
Apartment Area	163.16 m <sup>2</sup>	1,756 ft <sup>2</sup>
Balcony Area	30.21 m <sup>2</sup>	325 ft <sup>2</sup>
<b>Total Area</b>	<b>193.37 m<sup>2</sup></b>	<b>2,081 ft<sup>2</sup></b>



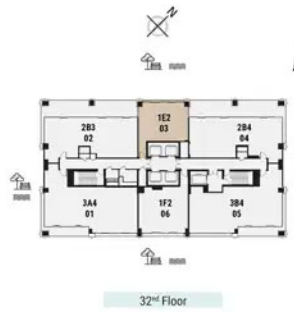
# E2

## 1 BEDROOM

Tower | Type E2 | Unit 3203



Apartment Area	67.66 m <sup>2</sup>	728 ft <sup>2</sup>
Balcony Area	2.52 m <sup>2</sup>	27 ft <sup>2</sup>
<b>Total Area</b>	<b>70.18 m<sup>2</sup></b>	<b>755 ft<sup>2</sup></b>

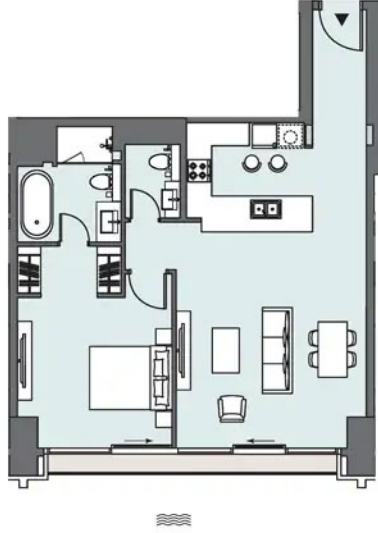


32<sup>nd</sup> Floor

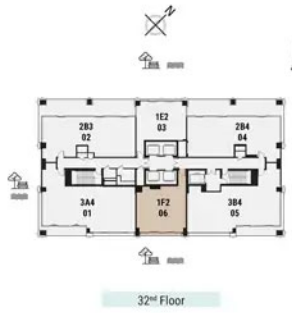
# F2

## 1 BEDROOM

Tower | Type F2 | Unit 3206



Apartment Area	78.42 m <sup>2</sup>	844 ft <sup>2</sup>
Balcony Area	4.7 m <sup>2</sup>	51 ft <sup>2</sup>
<b>Total Area</b>	<b>83.12 m<sup>2</sup></b>	<b>895 ft<sup>2</sup></b>

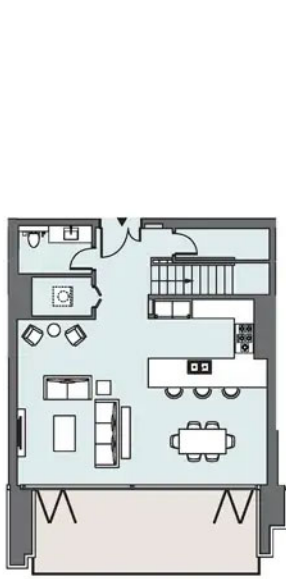


32<sup>nd</sup> Floor

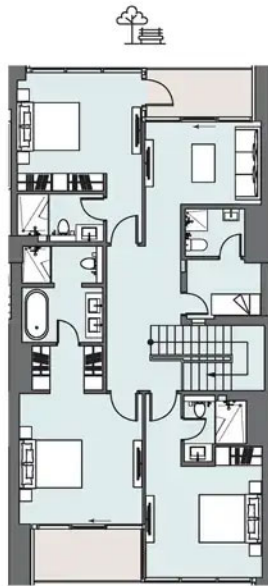
# H

## 3 BEDROOM

BLOCK 2 DUPLEX | Type F | Unit 210



Second Floor



Third Floor



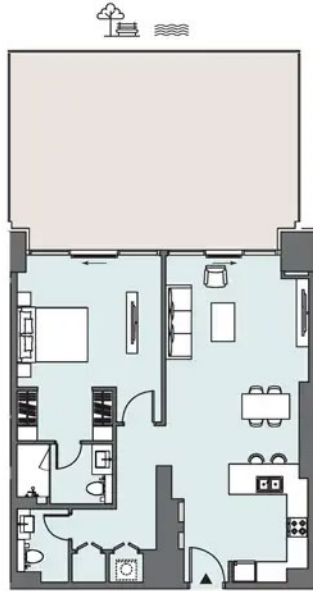
Third Floor



Second Floor

Apartment Area	202.17 m <sup>2</sup>	2,176 ft <sup>2</sup>
Balcony Area	37.89 m <sup>2</sup>	408 ft <sup>2</sup>
<b>Total Area</b>	<b>240.06 m<sup>2</sup></b>	<b>2,584 ft<sup>2</sup></b>

1 BEDROOM  
Tower | Type I | Unit 307



Apartment Area	83.49 m <sup>2</sup>	899 ft <sup>2</sup>
Balcony Area	50.08 m <sup>2</sup>	539 ft <sup>2</sup>
<b>Total Area</b>	<b>133.57 m<sup>2</sup></b>	<b>1,438 ft<sup>2</sup></b>



## CONTACT US



Call Us [+971 4 248 3400](tel:+97142483400)



WhatsApp [+971 55 162 3236](https://wa.me/971551623236)

**TANAMI**  
PROPERTIES