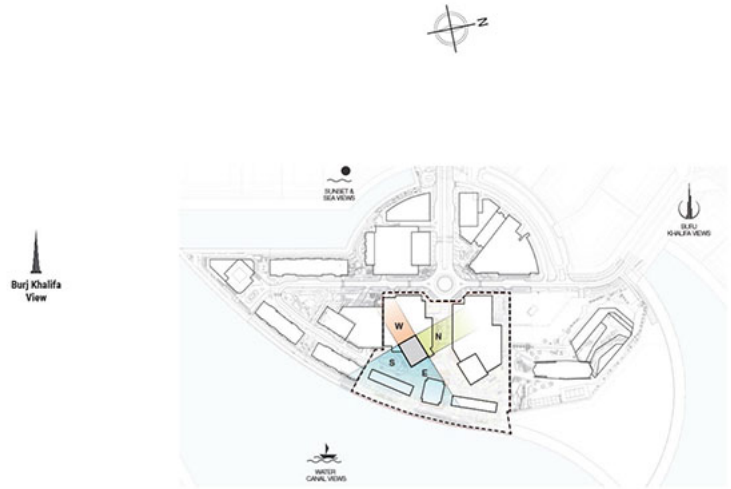


# Peninsula Four - Apartment



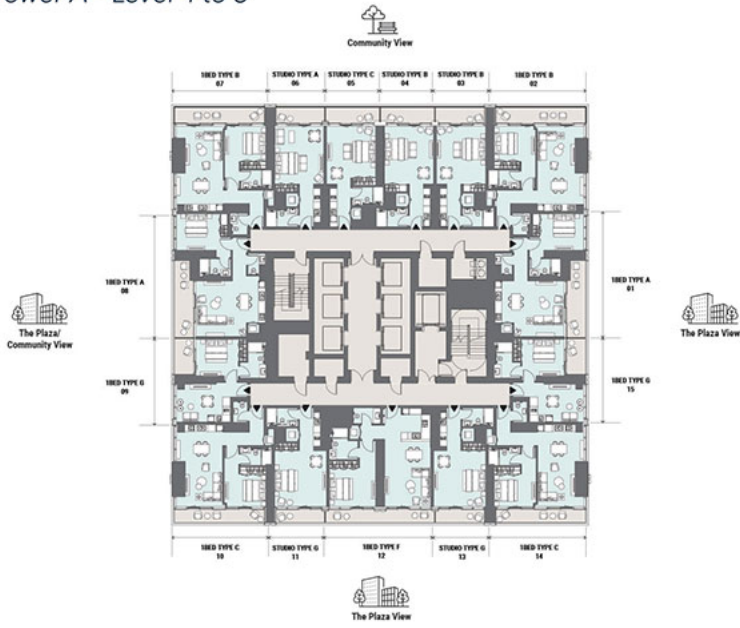
Tower A - Level 23



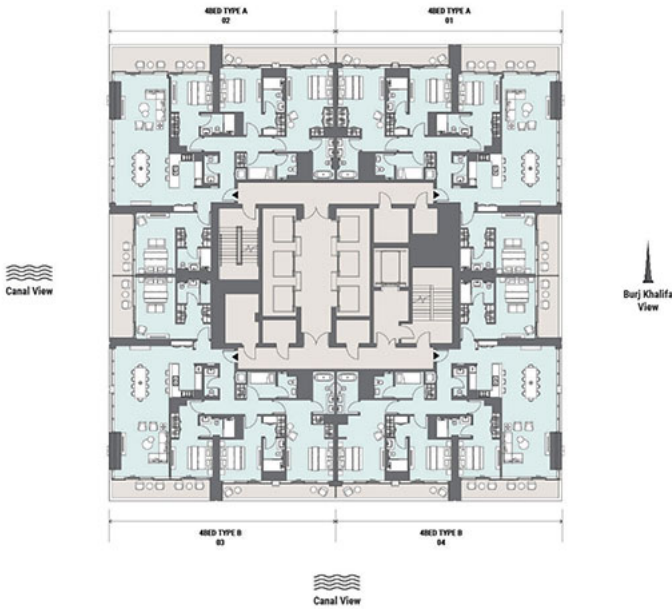
Tower A - Level 24 to 47



Tower A - Level 4 to 5



Tower A - Level 49 to 50



Tower A - Level 51



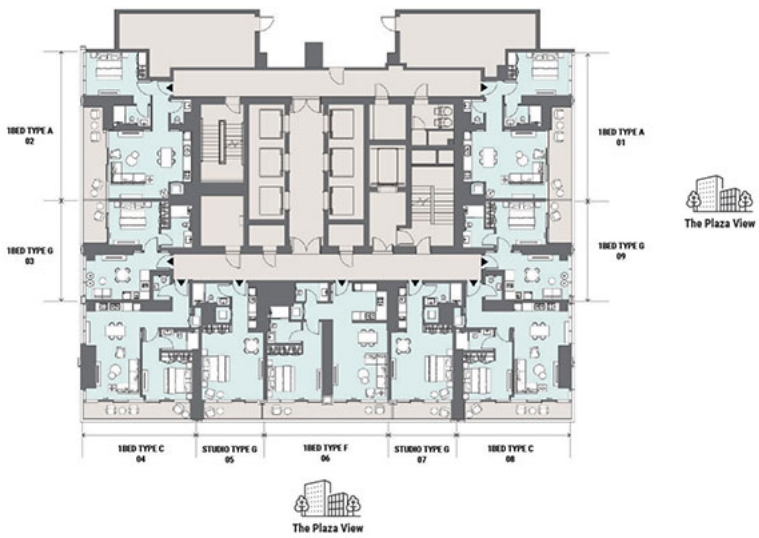
Tower A - Level 6



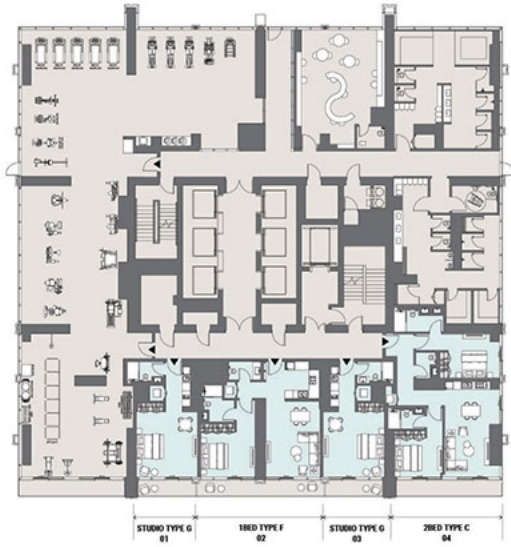
Tower A - Level 7 to 22



Tower A - Podium 2



Tower A - Podium 3



STUDIO TYPE G 01    1RD TYPE F 02    STUDIO TYPE G 03    2RD TYPE C 04



A

**FOUR BEDROOM**  
Tower A | Type A | Unit 01  
Levels 49-50

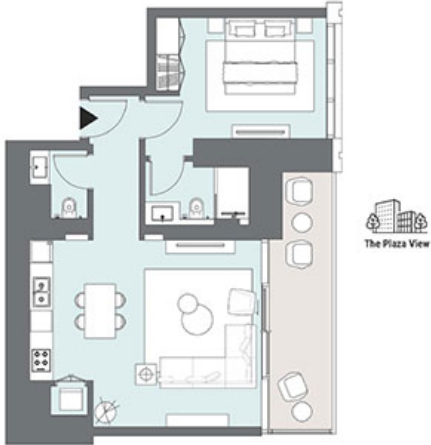


Apartment Area	208.7 m <sup>2</sup>	2,246 ft <sup>2</sup>
Balcony Area	41.01 m <sup>2</sup>	442 ft <sup>2</sup>
<b>Total Area</b>	<b>249.71 m<sup>2</sup></b>	<b>2,688 ft<sup>2</sup></b>

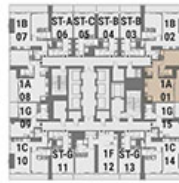
# A

## ONE BEDROOM

Tower A | Type A | Unit 01  
Levels 4-5



Community View



The Plaza View

Levels 4-5

Apartment Area	65.3 m <sup>2</sup>	703 ft <sup>2</sup>
Balcony Area	12.11 m <sup>2</sup>	130 ft <sup>2</sup>
<b>Total Area</b>	<b>77.41 m<sup>2</sup></b>	<b>833 ft<sup>2</sup></b>

# A

## ONE BEDROOM

Tower A | Type A | Unit 01  
Levels 7-22



Apartment Area	65.23 m <sup>2</sup>	702 ft <sup>2</sup>
Balcony Area	12.08 m <sup>2</sup>	130 ft <sup>2</sup>
<b>Total Area</b>	<b>77.31 m<sup>2</sup></b>	<b>832 ft<sup>2</sup></b>

Levels 7-22

A

TWO BEDROOM

Tower A | Type A | Unit 02  
Level 23



City Skyline View



Level 23

Apartment Area	114.42 m <sup>2</sup>	1,232 ft <sup>2</sup>
Balcony Area	19.11 m <sup>2</sup>	205 ft <sup>2</sup>
<b>Total Area</b>	<b>133.53 m<sup>2</sup></b>	<b>1,437 ft<sup>2</sup></b>

**THREE BEDROOM**

Tower A | Unit 05  
Level 23

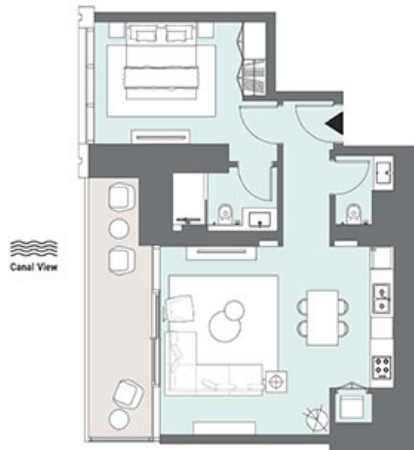


Apartment Area	153.5 m <sup>2</sup>	1,652 ft <sup>2</sup>
Balcony Area	26.49 m <sup>2</sup>	285 ft <sup>2</sup>
<b>Total Area</b>	<b>179.99 m<sup>2</sup></b>	<b>1,937 ft<sup>2</sup></b>

# A

## ONE BEDROOM

Tower A | Type A | Unit 07  
Levels 24-47



Apartment Area	65.29 m <sup>2</sup>	703 ft <sup>2</sup>
Balcony Area	12 m <sup>2</sup>	129 ft <sup>2</sup>
<b>Total Area</b>	<b>77.29 m<sup>2</sup></b>	<b>832 ft<sup>2</sup></b>

# A

## TWO BEDROOM

Tower A | Type A | Unit 08  
Levels 24-47



Apartment Area	114.33 m <sup>2</sup>	1,231 ft <sup>2</sup>
Balcony Area	19.06 m <sup>2</sup>	205 ft <sup>2</sup>
<b>Total Area</b>	<b>133.39 m<sup>2</sup></b>	<b>1,436 ft<sup>2</sup></b>

A

FOUR BEDROOM  
Tower B | Type A | Unit 01  
Levels 49-50



Apartment Area	208.7 m <sup>2</sup>	2,246 ft <sup>2</sup>
Balcony Area	41.01 m <sup>2</sup>	442 ft <sup>2</sup>
<b>Total Area</b>	<b>249.71 m<sup>2</sup></b>	<b>2,688 ft<sup>2</sup></b>

Drawings are provided by our consultants. All dimensions, features and amenities are approximate at time of printing. Actual size may vary from stated area. Drawings not to scale. E & OE. The developer reserves the right to make revisions to the floor plans and any features, materials and dimensions mentioned without further notice.

# A

## FOUR BEDROOM

Tower A | Type A | Unit 01  
Levels 49-50



Apartment Area	208.7 m <sup>2</sup>	2,246 ft <sup>2</sup>
Balcony Area	41.01 m <sup>2</sup>	442 ft <sup>2</sup>
<b>Total Area</b>	<b>249.71 m<sup>2</sup></b>	<b>2,688 ft<sup>2</sup></b>

Drawings are provided by our consultants. All dimensions, features and amenities are approximate at time of printing. Actual size may vary from stated area. Drawings not to scale. E & OE. The developer reserves the right to make revisions to the floor plans and any features, materials and dimensions mentioned without further notice.

**THREE BEDROOM**

Tower A | Unit 10  
Levels 24-47



Apartment Area	154.62 m <sup>2</sup>	1,664 ft <sup>2</sup>
Balcony Area	26.4 m <sup>2</sup>	284 ft <sup>2</sup>
<b>Total Area</b>	<b>181.02 m<sup>2</sup></b>	<b>1,948 ft<sup>2</sup></b>

**THREE BEDROOM**

Tower A | Unit 12  
Levels 7-22



Apartment Area	153.38 m <sup>2</sup>	1,651 ft <sup>2</sup>
Balcony Area	26.53 m <sup>2</sup>	286 ft <sup>2</sup>
<b>Total Area</b>	<b>179.91 m<sup>2</sup></b>	<b>1,937 ft<sup>2</sup></b>

A

FOUR BEDROOM

Tower B | Type A | Unit 02  
Levels 49-50



Apartment Area	208.75 m <sup>2</sup>	2,247 ft <sup>2</sup>
Balcony Area	41.05 m <sup>2</sup>	442 ft <sup>2</sup>
<b>Total Area</b>	<b>249.80 m<sup>2</sup></b>	<b>2,689 ft<sup>2</sup></b>

Drawings are provided by our consultants. All dimensions, features and amenities are approximate at time of printing. Actual size may vary from stated area. Drawings not to scale 1:8.50. The developer reserves the right to make revisions to the floor plans and any features, materials and dimensions mentioned without further notice.

A

FOUR BEDROOM

Tower A | Type A | Unit 02  
Levels 49-50



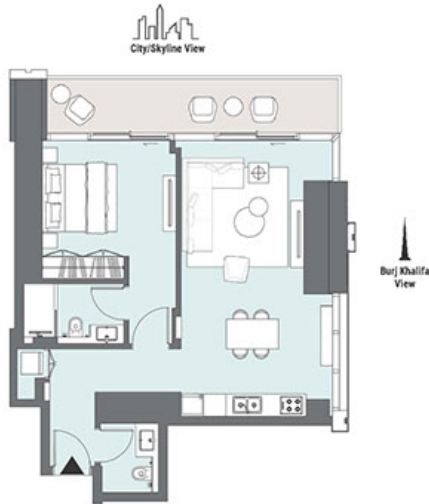
Apartment Area	208.75 m <sup>2</sup>	2,247 ft <sup>2</sup>
Balcony Area	41.05 m <sup>2</sup>	442 ft <sup>2</sup>
<b>Total Area</b>	<b>249.80 m<sup>2</sup></b>	<b>2,689 ft<sup>2</sup></b>

Drawings are provided by our consultants. All dimensions, features and amenities are approximate at time of printing. Actual size may vary from stated area. Drawings not to scale E & OE. The developer reserves the right to make revisions to the floor plans and any features, materials and dimensions mentioned without further notice.

# B

## ONE BEDROOM

Tower A | Type B | Unit 02  
Levels 24-47



Apartment Area	67.39 m <sup>2</sup>	725 ft <sup>2</sup>
Balcony Area	12.8 m <sup>2</sup>	138 ft <sup>2</sup>
<b>Total Area</b>	<b>80.19 m<sup>2</sup></b>	<b>863 ft<sup>2</sup></b>

Levels 24-47

# B

## ONE BEDROOM

Tower A | Type B | Unit 02  
Levels 4-5

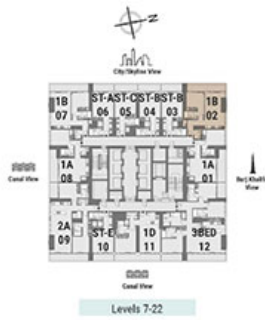
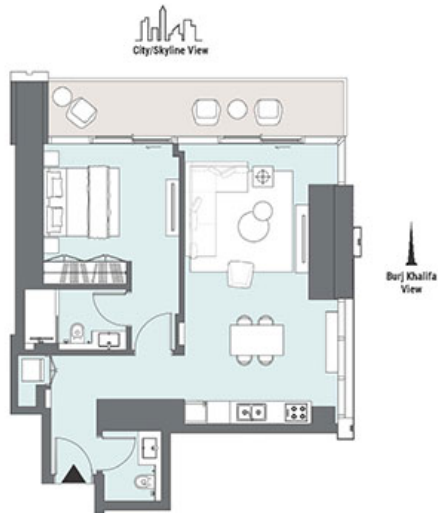


Apartment Area	67.15 m <sup>2</sup>	723 ft <sup>2</sup>
Balcony Area	12.81 m <sup>2</sup>	138 ft <sup>2</sup>
<b>Total Area</b>	<b>79.96 m<sup>2</sup></b>	<b>861 ft<sup>2</sup></b>

# B

## ONE BEDROOM

Tower A | Type B | Unit 02  
Levels 7-22



Apartment Area	67.12 m <sup>2</sup>	722 ft <sup>2</sup>
Balcony Area	12.81 m <sup>2</sup>	138 ft <sup>2</sup>
<b>Total Area</b>	<b>79.93 m<sup>2</sup></b>	<b>860 ft<sup>2</sup></b>

# B

**FOUR BEDROOM**  
Tower A | Type B | Unit 03  
Levels 49-50

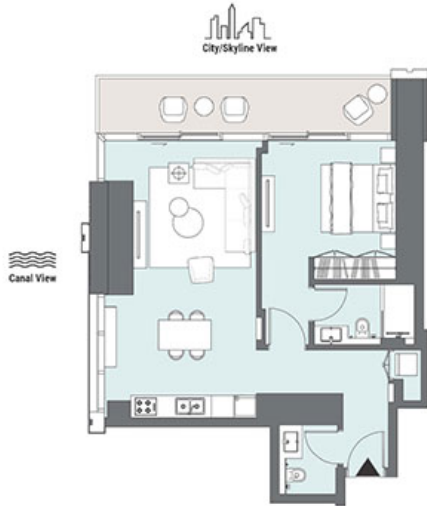


Apartment Area	206.85 m <sup>2</sup>	2,227 ft <sup>2</sup>
Balcony Area	33.92 m <sup>2</sup>	365 ft <sup>2</sup>
<b>Total Area</b>	<b>240.77 m<sup>2</sup></b>	<b>2,592 ft<sup>2</sup></b>

# B

## ONE BEDROOM

Tower A | Type B | Unit 06  
Levels 24-47



Apartment Area	67.38 m <sup>2</sup>	725 ft <sup>2</sup>
Balcony Area	12.8 m <sup>2</sup>	138 ft <sup>2</sup>
<b>Total Area</b>	<b>80.18m<sup>2</sup></b>	<b>863 ft<sup>2</sup></b>

Levels 24-47

# B

## ONE BEDROOM

Tower A | Type B | Unit 07  
Levels 4-5



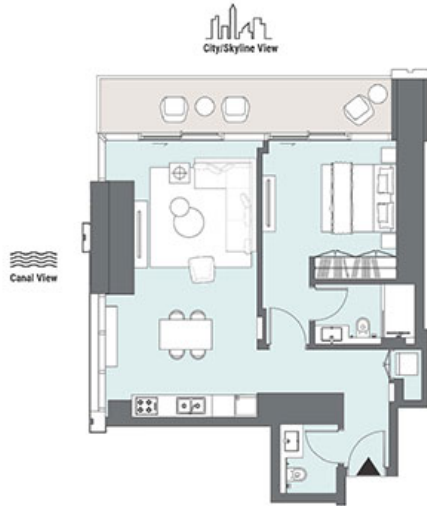
Apartment Area	67.15 m <sup>2</sup>	723 ft <sup>2</sup>
Balcony Area	12.81 m <sup>2</sup>	138 ft <sup>2</sup>
<b>Total Area</b>	<b>79.96 m<sup>2</sup></b>	<b>861 ft<sup>2</sup></b>

Levels 4-5

# B

## ONE BEDROOM

Tower A | Type B | Unit 07  
Levels 7-22

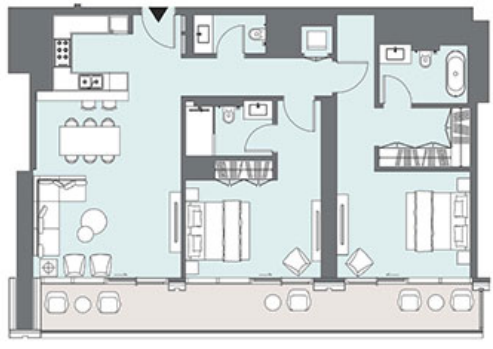


Apartment Area	67.12 m <sup>2</sup>	722 ft <sup>2</sup>
Balcony Area	12.8 m <sup>2</sup>	138 ft <sup>2</sup>
<b>Total Area</b>	<b>79.92 m<sup>2</sup></b>	<b>860 ft<sup>2</sup></b>

Levels 7-22

# B

**TWO BEDROOM**  
Tower A | Type B | Unit 09  
Levels 24-47



Canal View



Apartment Area	112.97 m <sup>2</sup>	1,216 ft <sup>2</sup>
Balcony Area	22.06 m <sup>2</sup>	237 ft <sup>2</sup>
<b>Total Area</b>	<b>135.03 m<sup>2</sup></b>	<b>1,453 ft<sup>2</sup></b>

# B

## FOUR BEDROOM

Tower A | Type B | Unit 03  
Levels 49-50



Apartment Area	206.85 m <sup>2</sup>	2,227 ft <sup>2</sup>
Balcony Area	33.92 m <sup>2</sup>	365 ft <sup>2</sup>
<b>Total Area</b>	<b>240.77 m<sup>2</sup></b>	<b>2,592 ft<sup>2</sup></b>

Drawings are provided by our consultants. All dimensions, features and amenities are approximate at time of printing. Actual size may vary from stated area. Drawings not to scale. E & OE. The developer reserves the right to make revisions to the floor plans and any features, materials and dimensions mentioned without further notice.

# B

## FOUR BEDROOM

Tower B | Type B | Unit 03  
Levels 49-50



Apartment Area	206.85 m <sup>2</sup>	2,227 ft <sup>2</sup>
Balcony Area	33.92 m <sup>2</sup>	365 ft <sup>2</sup>
<b>Total Area</b>	<b>240.77 m<sup>2</sup></b>	<b>2,592 ft<sup>2</sup></b>

Drawings are provided by our consultants. All dimensions, features and amenities are approximate at time of printing. Actual sizes may vary from stated area. Drawings not to scale. E & OE. The developer reserves the right to make revisions to the floor plans and any features, materials and dimensions mentioned without further notice.

**B**  
**FOUR BEDROOM**  
Tower A | Type B | Unit 04  
Levels 49-50



Apartment Area	207 m <sup>2</sup>	2,228 ft <sup>2</sup>
Balcony Area	33.93 m <sup>2</sup>	365 ft <sup>2</sup>
<b>Total Area</b>	<b>240.93 m<sup>2</sup></b>	<b>2,593 ft<sup>2</sup></b>

Drawings are provided by our consultants. All dimensions, features and amenities are approximate at time of printing. Actual size may vary from stated area. Drawings not to scale. E & OE. The developer reserves the right to make revisions to the floor plans and any features, materials and dimensions contained without further notice.

# B

## FOUR BEDROOM

Tower B | Type B | Unit 04  
Levels 49-50



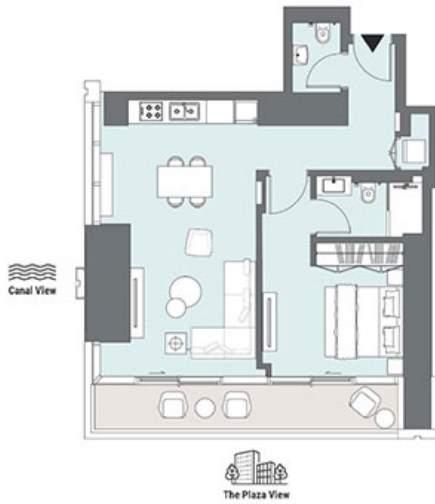
Apartment Area	207 m <sup>2</sup>	2,228 ft <sup>2</sup>
Balcony Area	33.93 m <sup>2</sup>	365 ft <sup>2</sup>
<b>Total Area</b>	<b>240.93 m<sup>2</sup></b>	<b>2,593 ft<sup>2</sup></b>

Drawings are provided by our consultants. All dimensions, features and amenities are approximate at time of printing. Actual size may vary from stated area. Drawings not to scale E & OC. The developer reserves the right to make revisions to the floor plans and any features, materials and dimensions mentioned without further notice.

C

ONE BEDROOM

Tower A | Type C | Unit 10  
Level 6

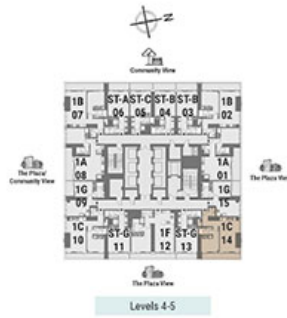
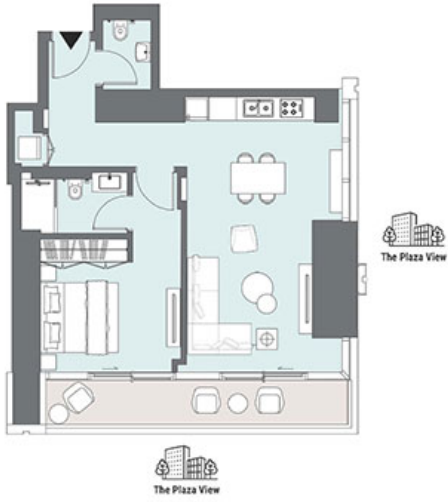


Apartment Area	64.27 m <sup>2</sup>	692 ft <sup>2</sup>
Balcony Area	10.36 m <sup>2</sup>	111 ft <sup>2</sup>
<b>Total Area</b>	<b>74.63 m<sup>2</sup></b>	<b>803 ft<sup>2</sup></b>

C

ONE BEDROOM

Tower A | Type C | Unit 14  
Levels 4-5



Apartment Area	64.26 m <sup>2</sup>	692 ft <sup>2</sup>
Balcony Area	10.34 m <sup>2</sup>	111 ft <sup>2</sup>
<b>Total Area</b>	<b>74.60 m<sup>2</sup></b>	<b>803 ft<sup>2</sup></b>

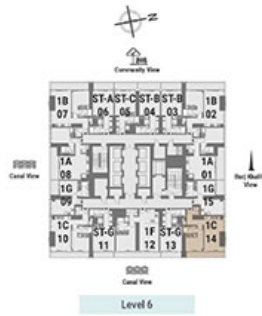
C

ONE BEDROOM

Tower A | Type C | Unit 14  
Level 6



Canal View



Apartment Area	64.26 m <sup>2</sup>	692 ft <sup>2</sup>
Balcony Area	10.34 m <sup>2</sup>	111 ft <sup>2</sup>
<b>Total Area</b>	<b>74.60 m<sup>2</sup></b>	<b>803 ft<sup>2</sup></b>

Level 6

D

ONE BEDROOM

Tower A | Type D | Unit 04  
Level 23



Canal View



Apartment Area	75.49 m <sup>2</sup>	813 ft <sup>2</sup>
Balcony Area	14.64 m <sup>2</sup>	157 ft <sup>2</sup>
<b>Total Area</b>	<b>90.13 m<sup>2</sup></b>	<b>970 ft<sup>2</sup></b>

Levels 23

D

ONE BEDROOM

Tower A | Type D | Unit 11  
Levels 7-22



Canal View



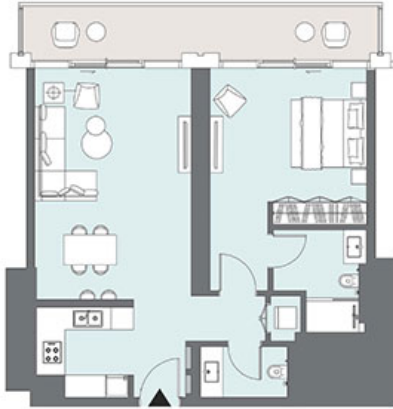
Levels 7-22

Apartment Area	75.49 m <sup>2</sup>	813 ft <sup>2</sup>
Balcony Area	14.74 m <sup>2</sup>	158 ft <sup>2</sup>
<b>Total Area</b>	<b>90.23 m<sup>2</sup></b>	<b>971 ft<sup>2</sup></b>

# E

## ONE BEDROOM

Tower A | Type E | Unit 04  
Levels 24-47



Apartment Area	77.5 m <sup>2</sup>	834 ft <sup>2</sup>
Balcony Area	14.72 m <sup>2</sup>	159 ft <sup>2</sup>
<b>Total Area</b>	<b>92.22 m<sup>2</sup></b>	<b>993 ft<sup>2</sup></b>

Levels 24-47

F

ONE BEDROOM

Tower A | Type F | Unit 02  
Podium 3



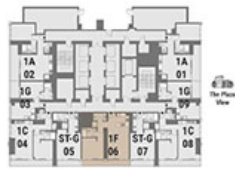
The Plaza View  
Podium 3

Apartment Area	75.81 m <sup>2</sup>	816 ft <sup>2</sup>
Balcony Area	11.72 m <sup>2</sup>	126 ft <sup>2</sup>
<b>Total Area</b>	<b>87.53 m<sup>2</sup></b>	<b>942 ft<sup>2</sup></b>

F

ONE BEDROOM

Tower A | Type F | Unit 06  
Podium 2



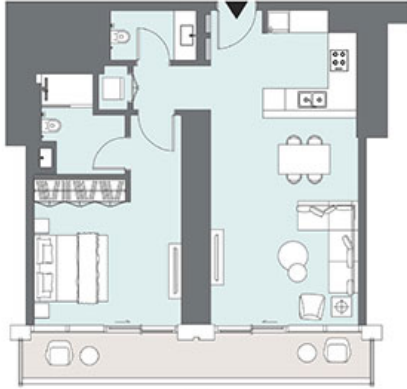
Podium 2

Apartment Area	76.03 m <sup>2</sup>	818 ft <sup>2</sup>
Balcony Area	11.65 m <sup>2</sup>	126 ft <sup>2</sup>
<b>Total Area</b>	<b>87.68 m<sup>2</sup></b>	<b>944 ft<sup>2</sup></b>

# F

## ONE BEDROOM

Tower A | Type F | Unit 12  
Levels 4-5

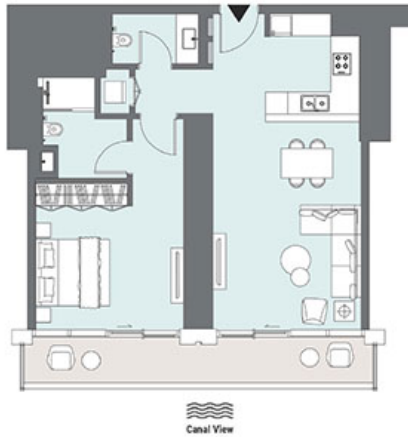


Apartment Area	75.71 m <sup>2</sup>	815 ft <sup>2</sup>
Balcony Area	11.86 m <sup>2</sup>	128 ft <sup>2</sup>
<b>Total Area</b>	<b>87.57 m<sup>2</sup></b>	<b>943 ft<sup>2</sup></b>

F

ONE BEDROOM

Tower A | Type F | Unit 12  
Level 6



Apartment Area	75.71 m <sup>2</sup>	815 ft <sup>2</sup>
Balcony Area	11.86 m <sup>2</sup>	128 ft <sup>2</sup>
<b>Total Area</b>	<b>87.57 m<sup>2</sup></b>	<b>943 ft<sup>2</sup></b>

## CONTACT US



Call Us [+971 4 248 3400](tel:+97142483400)



WhatsApp [+971 55 162 3236](https://wa.me/971551623236)

**TANAMI**  
PROPERTIES