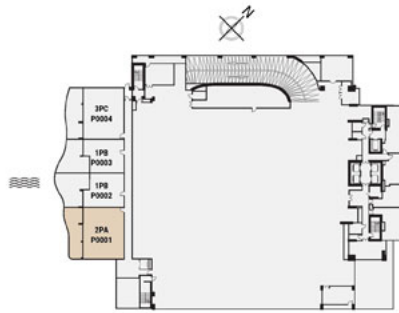
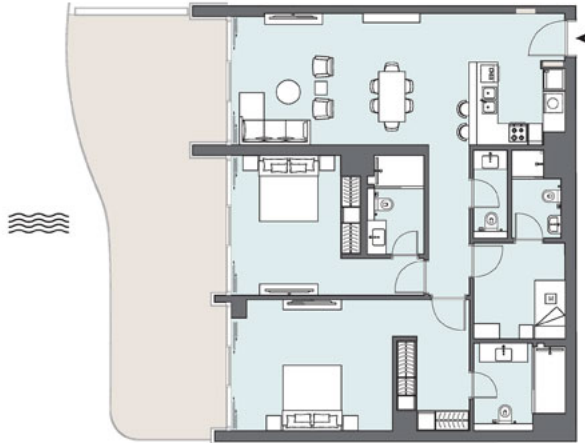


Peninsula One - Apartment

2 Bedroom - PA

2 BEDROOM

The Podium Simplexes | Type PA | Unit P0001



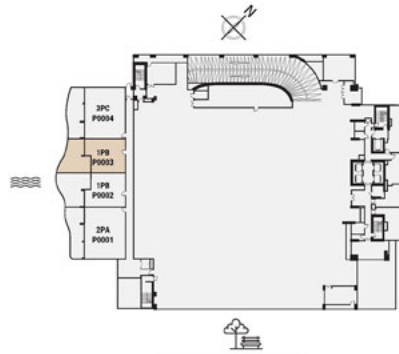
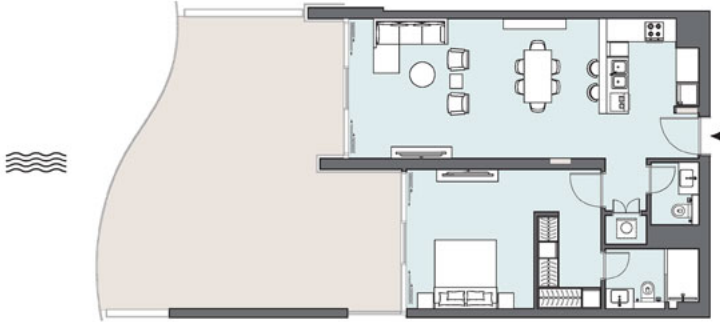
Ground Floor

Apartment Area	128.02 m ²	1,377.99 ft ²
Balcony Area	50.71 m ²	545.84 ft ²
Total Area	178.73 m²	1,923.83 ft²

1 Bedroom - PB

1 BEDROOM

The Podium Simplexes | Type PB | Unit P0003



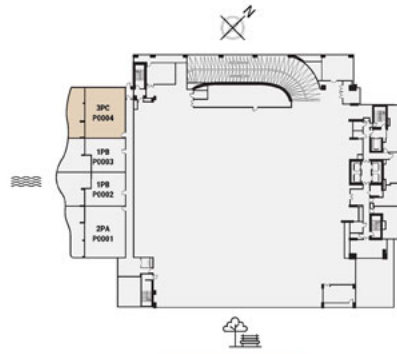
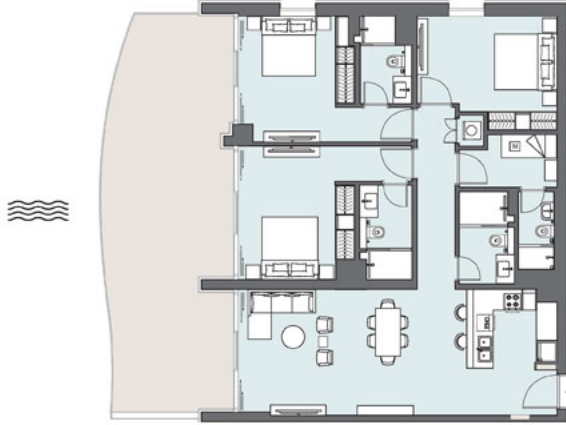
Ground Floor

Apartment Area	78.44 m ²	844.32 ft ²
Balcony Area	52.32 m ²	563.17 ft ²
Total Area	130.76 m²	1,407.49 ft²

3 Bedroom - PC

3 BEDROOM

The Podium Simplexes | Type PC | Unit P0004



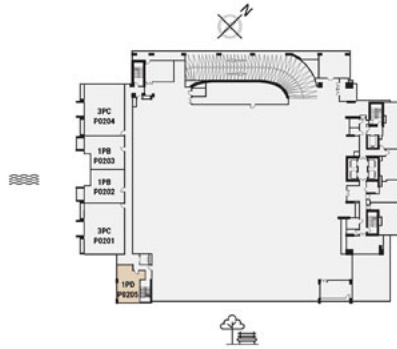
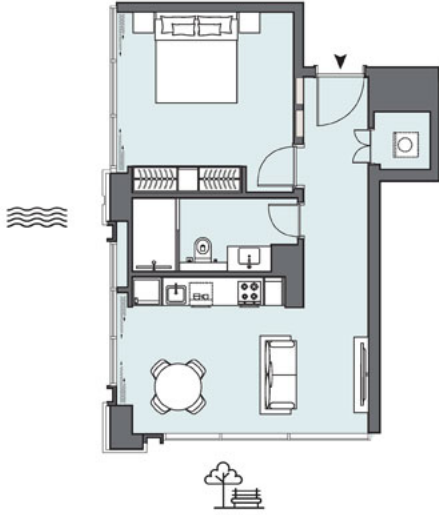
Ground Floor

Apartment Area	128.93 m ²	1,387.79 ft ²
Balcony Area	52.24 m ²	562.31 ft ²
Total Area	181.17 m²	1,950.10 ft²

1 Bedroom - PD

1 BEDROOM

The Podium Simplexes | Type PD | Unit P0205



Floor 2

Apartment Area	56.79 m ²	611.28 ft ²
Balcony Area	0 m ²	0 ft ²
Total Area	56.79 m²	611.28 ft²

2 Bedroom - TB

2 BEDROOM

The Tower | Type TB | Unit 02
 Floors 4-6, 8-11, 13-14, 18-21, 23-26, 28-31 & 33-35



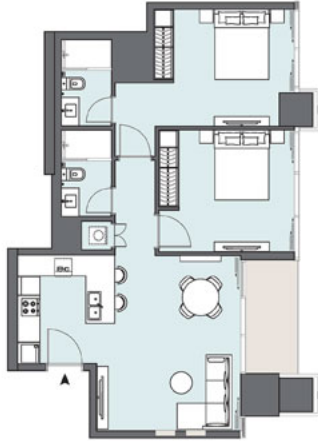
Apartment Area	77.65 m ²	835.82 ft ²
Balcony Area	5.74 m ²	61.78 ft ²
Total Area	83.39 m²	897.60 ft²

Floors 4-14, 17-35

2 Bedroom - TE

2 BEDROOM

The Tower | Type TE | Unit 05
 Floors 4-6, 8-11, 13-14, 18-21, 23-26, 28-31 & 33-35



Apartment Area	82.24 m ²	885.22 ft ²
Balcony Area	5.8 m ²	62.43 ft ²
Total Area	88.04 m²	947.65 ft²

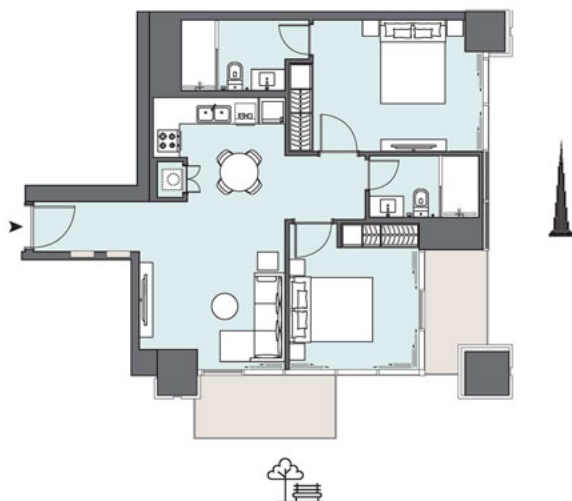


Floors 4-14, 17-35

2 Bedroom - TH

2 BEDROOM

The Tower | Type TH | Unit 09
Floors 4-6, 8-11,13-14, 18-21, 23-26, 28-31 & 33-35

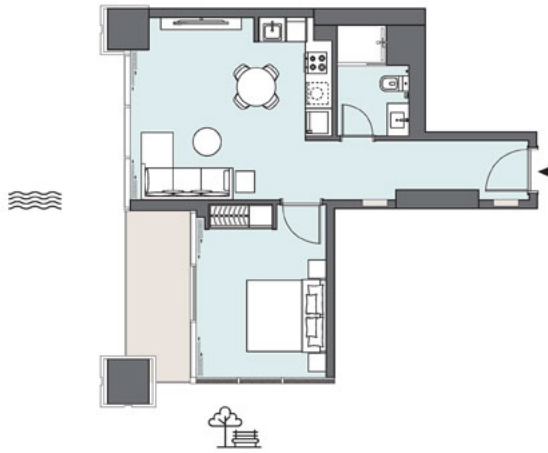


Apartment Area	74.03 m ²	796.85 ft ²
Balcony Area	10.73 m ²	115.50 ft ²
Total Area	84.76 m²	912.35 ft²

1 Bedroom - T1

1 BEDROOM

The Tower | Type T1 | Unit 11
 Floors 4-6, 8-11, 13-14, 18-21, 23-26, 28-31 & 33-35



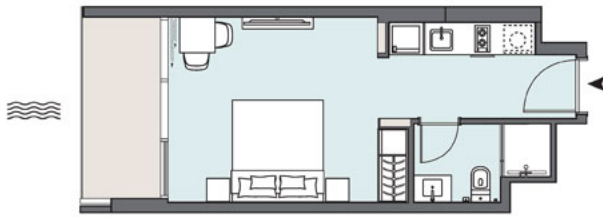
Apartment Area	50.18 m ²	540.13 ft ²
Balcony Area	6.88 m ²	74.06 ft ²
Total Area	57.06 m²	614.19 ft²

Floors 4-14, 17-35

null - TJ

STUDIO APARTMENT

The Tower | Type TJ | Unit 12
 Floors 7, 12, 17, 22, 27 & 32



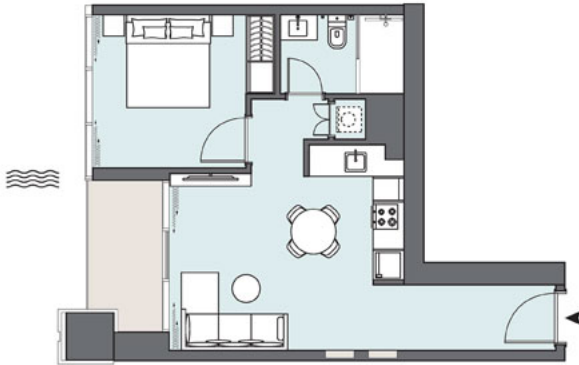
Apartment Area	30.1 m ²	323.99 ft ²
Balcony Area	7.77 m ²	83.64 ft ²
Total Area	37.87 m²	407.63 ft²



Floors 4-14, 17-35

1 Bedroom - TK

1 BEDROOM
 The Tower | Type TK | Unit 14
 Floors 7, 12, 17, 22, 27 & 32



Apartment Area	47.16 m ²	507.63 ft ²
Balcony Area	6.84 m ²	73.62 ft ²
Total Area	54.00 m²	581.25 ft²

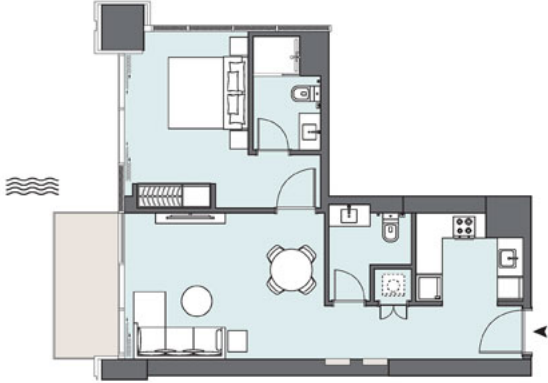


Floors 4-14, 17-35

1 Bedroom - TL

1 BEDROOM

The Tower | Type TL | Unit 301



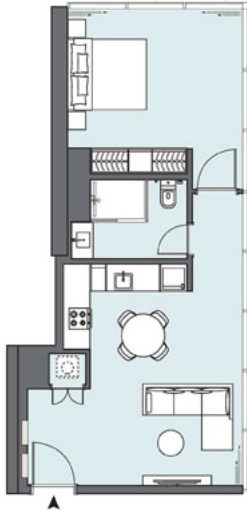
Apartment Area	59.15 m ²	636.69 ft ²
Balcony Area	5.66 m ²	60.92 ft ²
Total Area	64.81 m²	697.61 ft²

Floor 3

1 Bedroom - TM

1 BEDROOM

The Tower | Type TM | Unit 201



Apartment Area	57.86 m ²	622.80 ft ²
Balcony Area	0 m ²	0 ft ²
Total Area	57.86 m²	622.80 ft²



Floor 2

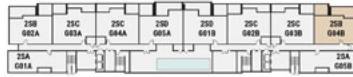
2 Bedroom - SB

2 BEDROOM

The Waterfront Simplexes | Type SB | Unit G04B



Apartment Area	101.5 m ²	1,092.54 ft ²
Balcony Area	72.67 m ²	782.21 ft ²
Total Area	174.17 m²	1,874.75 ft²

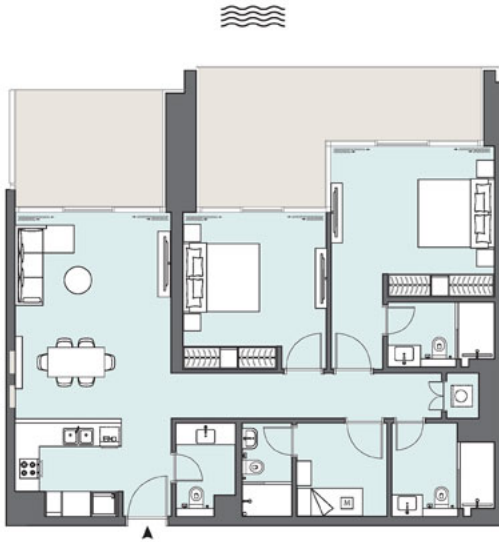


Ground Floor

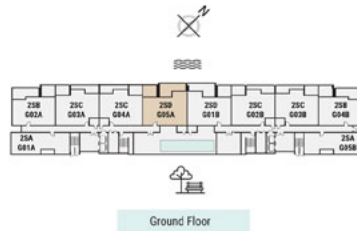
2 Bedroom - SD

2 BEDROOM

The Waterfront Simplexes | Type SD | Unit G05A



Apartment Area	112.36 m ²	1,209.43 ft ²
Balcony Area	61.47 m ²	661.66 ft ²
Total Area	173.83 m²	1,871.09 ft²



Ground Floor

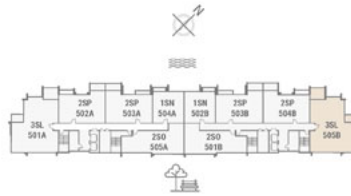
3 Bedroom - SL

3 BEDROOM

The Waterfront Simplexes | Type SL | Unit 505B



Apartment Area	161.42 m ²	1,737.51 ft ²
Balcony Area	20.49 m ²	220.55 ft ²
Total Area	181.91 m²	1,958.06 ft²

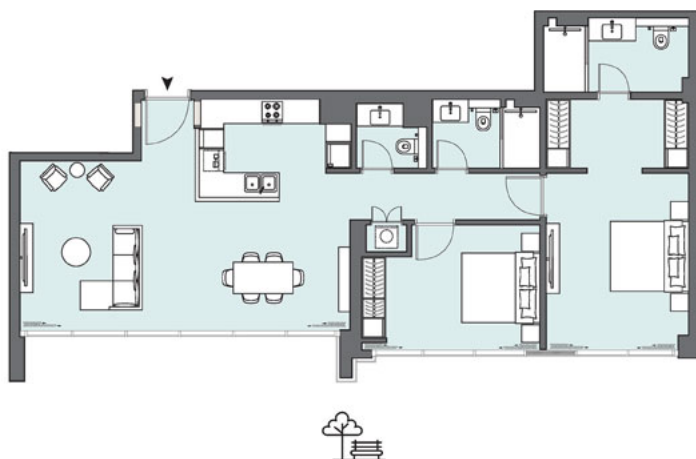


Floor 5

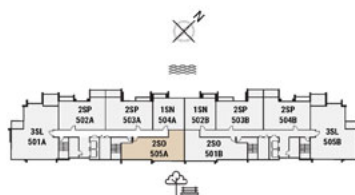
2 Bedroom - SO

2 BEDROOM

The Waterfront Simplexes | Type SO | Unit 505A



Apartment Area	109.11 m ²	1,174.45 ft ²
Balcony Area	9.03 m ²	97.20 ft ²
Total Area	118.14 m²	1,271.65 ft²



Floor 5

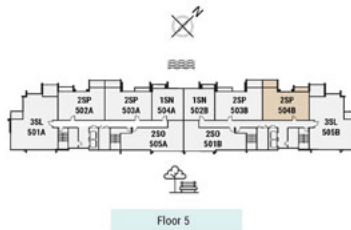
2 Bedroom - SM

2 BEDROOM

The Waterfront Simplexes | Type SP | Unit 504B



Apartment Area	100.5 m ²	1,081.77 ft ²
Balcony Area	12.46 m ²	134.12 ft ²
Total Area	112.96 m²	1,215.89 ft²



Floor 5

CONTACT US



Call Us [+971 4 248 3400](tel:+97142483400)



WhatsApp [+971 55 162 3236](https://wa.me/971551623236)