

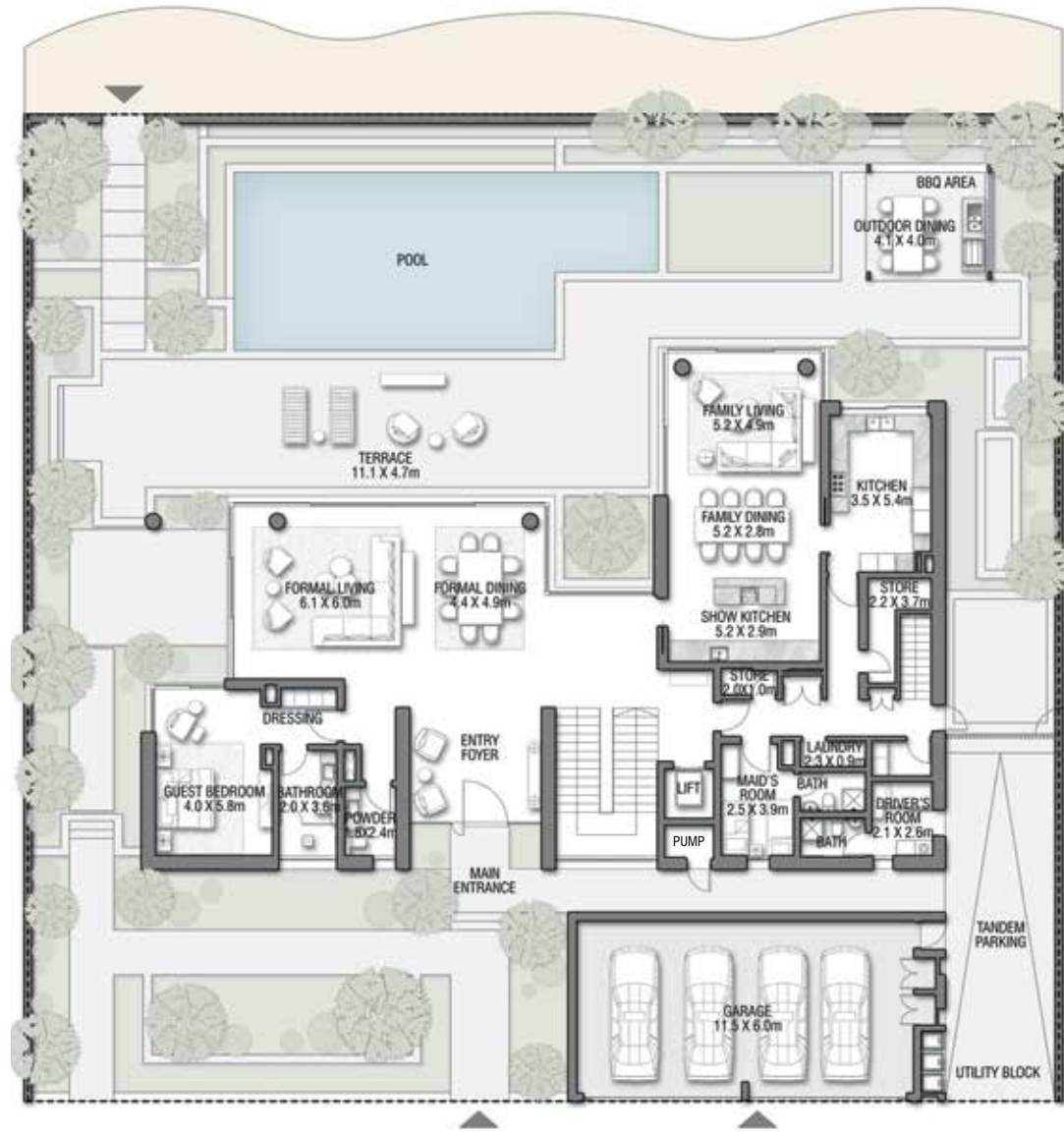


# REDWOOD

Coral Villas Collection

G + 2

7 BEDROOMS + FORMAL AND FAMILY LOUNGES + ROOF LOUNGE AND TERRACE



GROUND FLOOR

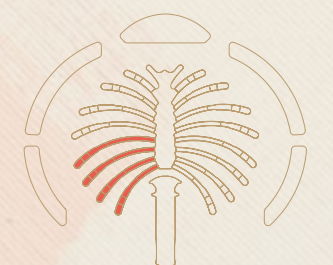


SECOND FLOOR



FIRST FLOOR

FLOOR TYPE	SQ. M.	SQ. FT.
Ground Floor	343.78	3,700.42
Balcony / Terrace / Porch - GF	6.44	69.32
First Floor Area	373.82	4,023.76
Balcony / Terrace - First Floor	36.75	395.57
Second Floor Area	209.40	2,253.96
Balcony / Terrace - Second Floor	78.29	842.71
Garage - Covered	81.72	879.63
<b>TOTAL BUILT-UP AREA</b>	<b>1,130.20</b>	<b>12,165.37</b>
Garage with Pergola	0.0	0.0
<b>TOTAL AREA</b>	<b>1,130.20</b>	<b>12,165.37</b>




Numbers, square footage and floor plans are approximate. Final dimensions, square footage and floor plans may vary and are subject to change without notice. The developer reserves the right to make revisions. Built-Up Area is measured in accordance with Dubai Land Department standards. Plans, artistic renderings, landscaping and images are for illustrative purposes only and are subject to change without notice. Landscape shown is indicative and not provided by the developer. Pool layout and configuration shown on floor plans are for general illustrative purposes only and are not provided by the developer. The Bespoke Edition Option offered to the buyer at additional price will include a standard pool offering.

INFO@NAKHEEL.COM  
800 NAKHEEL

THE CORAL COLLECTION

**PALM  
JEBEL ALI  
NAKHEEL**

For more information

 +971 4 248 3400

 +971 55 162 3236

 [info@goldpillars.ae](mailto:info@goldpillars.ae)

 [www.goldpillars.ae](http://www.goldpillars.ae)