



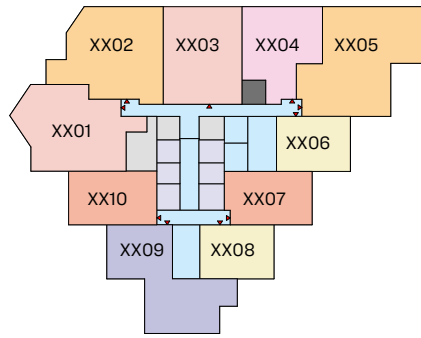
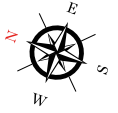
WAVES
OPULENCE



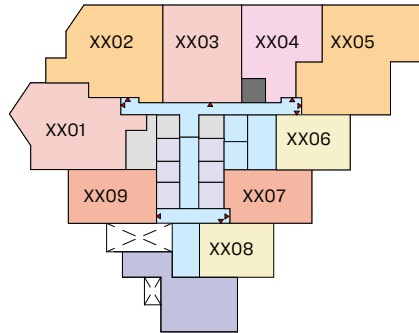
SOBHA HARTLAND

FLOOR PLANS
RESIDENTIAL UNIT PLANS

FLOOR PLAN LAYOUT



TYPICAL FLOOR PLAN
(10,12,14,16,18,22,24,26,28,30,32)_LOWER LEVEL



TYPICAL FLOOR PLAN
(11,13,15,17,19,23,25,27,29,31,33)_UPPER LEVEL

 1 BED UNIT	 2.5 BED UNIT	 CIRCULATION	 GARBAGE ROOM
 1.5 BED UNIT	 3 BED UNIT	 LIFT	
 2 BED UNIT	 4 BED UNIT	 SERVICES	

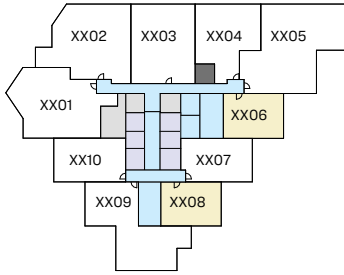
Disclaimer: 1. All dimensions are in metric, measured to wall finishes. 2. All materials, dimensions & drawings are approximate. 3. Information is subject to change without notice, at developer's absolute discretion. 4. Actual area may vary from the stated area. 5. Drawing are not to scale. 6. All images used are for illustrative purpose only and do not represent the actual size, features, specifications, fittings and furnishings. 7. The developer reserves the right to make revisions/ alterations, at its absolute discretion, without any liability whatsoever.

1 BEDROOM APARTMENT

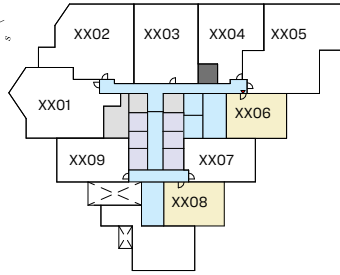
TYPE A (with powder room + balcony)

TOTAL SALEABLE AREA

SUITE = 728.39 SQ.FT.
 BALCONY = 70.18 SQ.FT.
 TOTAL = 798.57 SQ.FT.

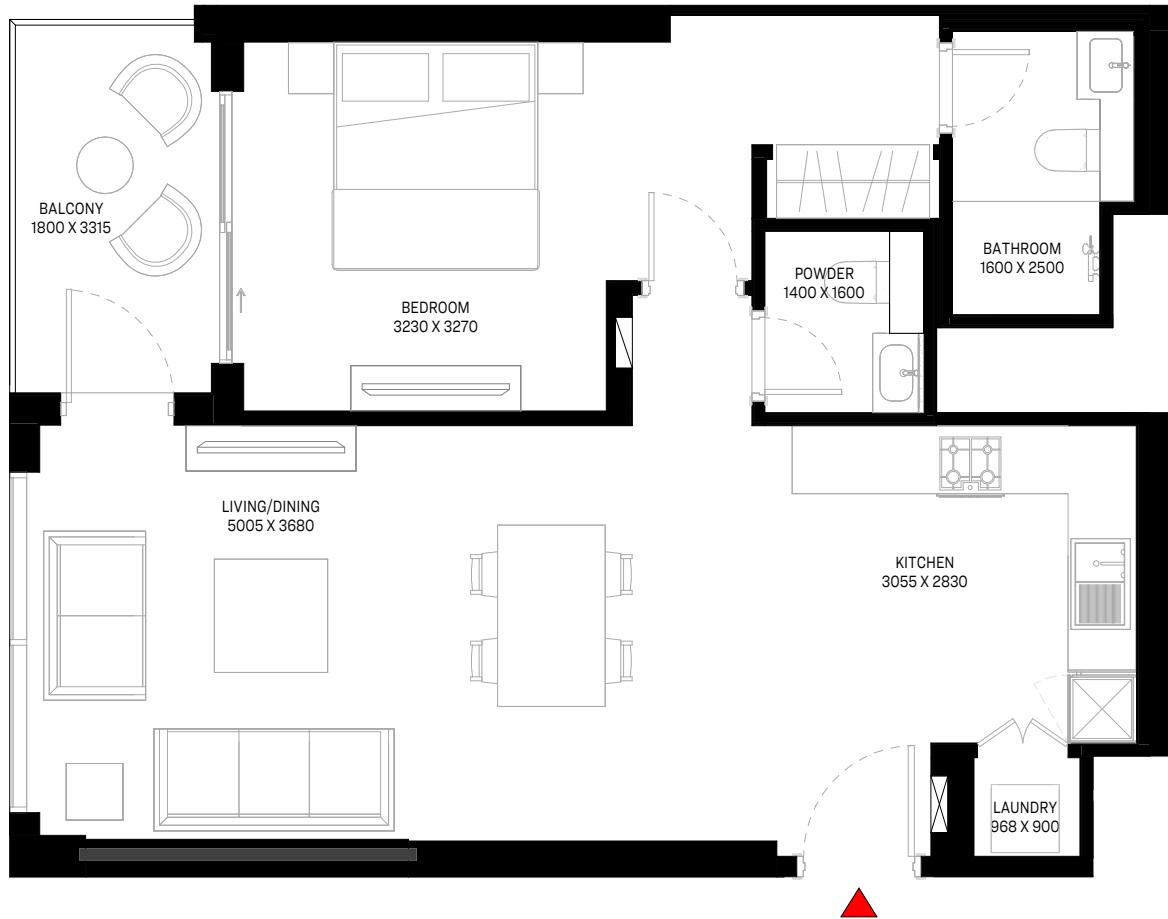


TYPICAL FLOOR PLAN
 (10,12,14,16,18,22,24,26,28,30,32)_LOWER LEVEL



TYPICAL FLOOR PLAN
 (11,13,15,17,19,23,25,27,29,31,33)_UPPER LEVEL

UNIT



List of unit numbers with this unit plan:

VIEWS

Hartland, Waterfront, Amenities

1006, 1008, 1106, 1108, 1206, 1208, 1306, 1308, 1406, 1408, 1506, 1508

Hartland, Waterfront

1606, 1608, 1706, 1708, 1806, 1808, 1906, 1908, 2206, 2208, 2306, 2308, 2406, 2408, 2506, 2508, 2606, 2608, 2706, 2708, 2806, 2808, 2906, 2908, 3006, 3008, 3106, 3108, 3206, 3208, 3306, 3308

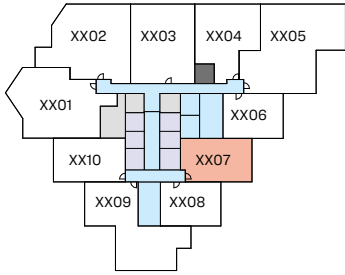
Disclaimer: 1. All dimensions are in metric, measured to wall finishes. 2. All materials, dimensions & drawings are approximate. 3. Information is subject to change without notice, at developer's absolute discretion. 4. Actual area may vary from the stated area. 5. Drawing are not to scale. 6. All images used are for illustrative purpose only and do not represent the actual size, features, specifications, fittings and furnishings. 7. The developer reserves the right to make revisions/ alterations, at its absolute discretion, without any liability whatsoever.

1.5 BEDROOM APARTMENT

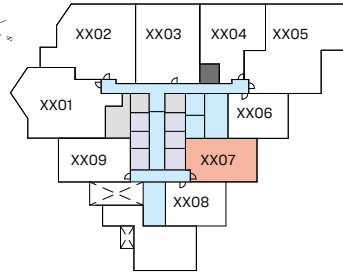
TYPE D (with study room + balcony)

TOTAL SALEABLE AREA

SUITE = 807.08 SQ.FT.
BALCONY = 87.83 SQ.FT.
TOTAL = 894.91 SQ.FT.

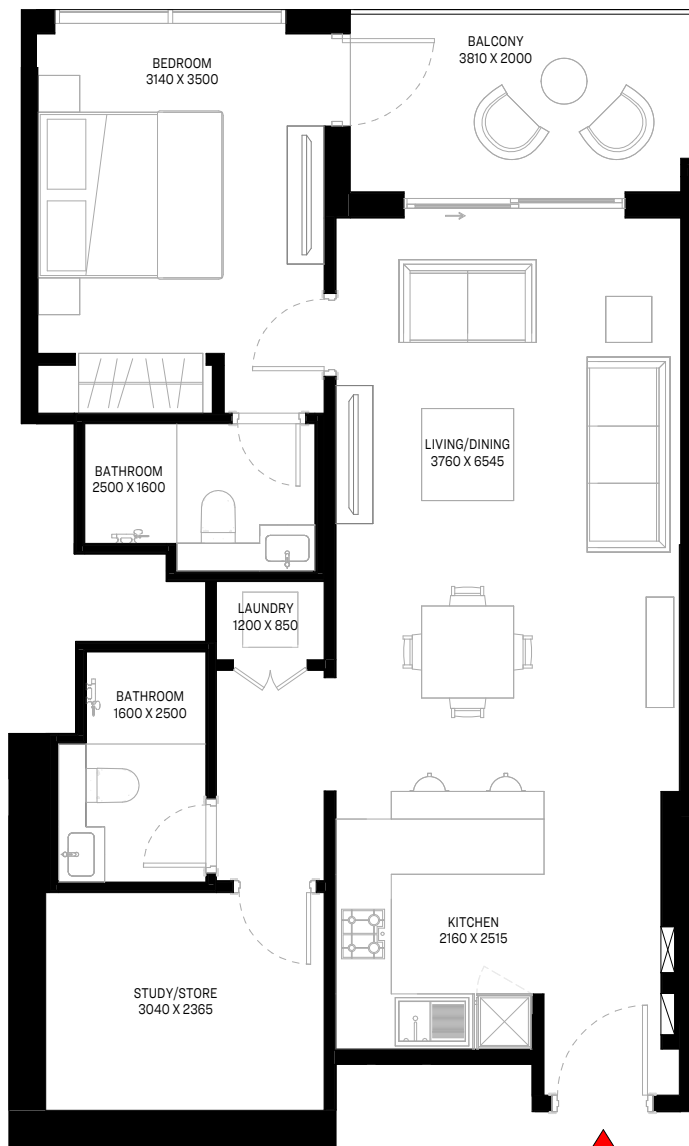


TYPICAL FLOOR PLAN
(10,12,14,16,18,22,24,26,28,30,32)_LOWER LEVEL



TYPICAL FLOOR PLAN
(11,13,15,17,19,23,25,27,29,31,33)_UPPER LEVEL

UNIT



List of unit numbers with this unit plan:

VIEWS

Hartland, Waterfront, Amenities
1007, 1107, 1207, 1307, 1407, 1507

Hartland, Waterfront
1607, 1707, 1807, 1907, 2207, 2307, 2407, 2507, 2607, 2707, 2807, 2907, 3007, 3107, 3207, 3307

Disclaimer: 1. All dimensions are in metric, measured to wall finishes. 2. All materials, dimensions & drawings are approximate. 3. Information is subject to change without notice, at developer's absolute discretion. 4. Actual area may vary from the stated area. 5. Drawing are not to scale. 6. All images used are for illustrative purpose only and do not represent the actual size, features, specifications, fittings and furnishings. 7. The developer reserves the right to make revisions/ alterations, at its absolute discretion, without any liability whatsoever.

1.5 BEDROOM APARTMENT

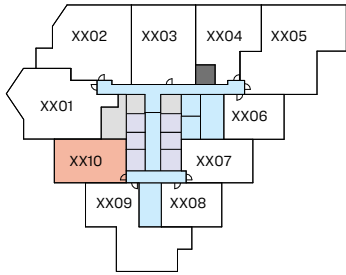
TYPE D1 (with study room + balcony)

TOTAL SALEABLE AREA

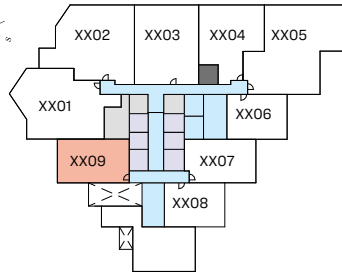
SUITE = 804.60 SQ.FT.

BALCONY = 88.37 SQ.FT.

TOTAL = 892.97 SQ.FT.

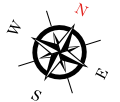


TYPICAL FLOOR PLAN
(10,12,14,16,18,22,24,26,28,30,32)_LOWER LEVEL



TYPICAL FLOOR PLAN
(11,13,15,17,19,23,25,27,29,31,33)_UPPER LEVEL

UNIT



List of unit numbers with this unit plan:

VIEWS

Hartland, Downtown

1010, 1109, 1210, 1309, 1410, 1509, 1610, 1709, 1810, 1909, 2210, 2309, 2410, 2509, 2610, 2709, 2810, 2909, 3010, 3109, 3210, 3309

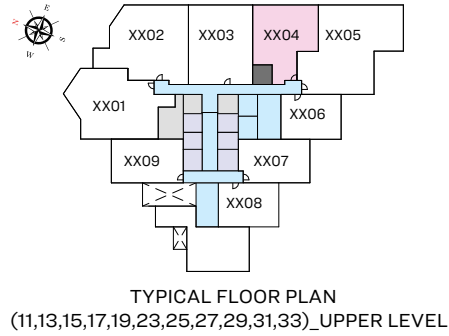
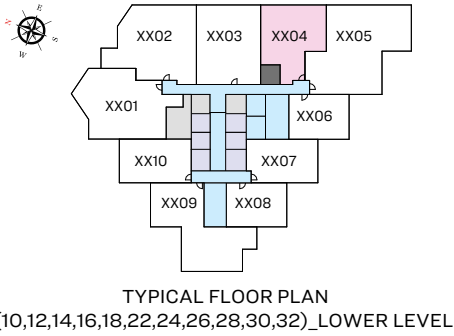
Disclaimer: 1. All dimensions are in metric, measured to wall finishes. 2. All materials, dimensions & drawings are approximate. 3. Information is subject to change without notice, at developer's absolute discretion. 4. Actual area may vary from the stated area. 5. Drawing are not to scale. 6. All images used are for illustrative purpose only and do not represent the actual size, features, specifications, fittings and furnishings. 7. The developer reserves the right to make revisions/ alterations, at its absolute discretion, without any liability whatsoever.

2 BEDROOM APARTMENT

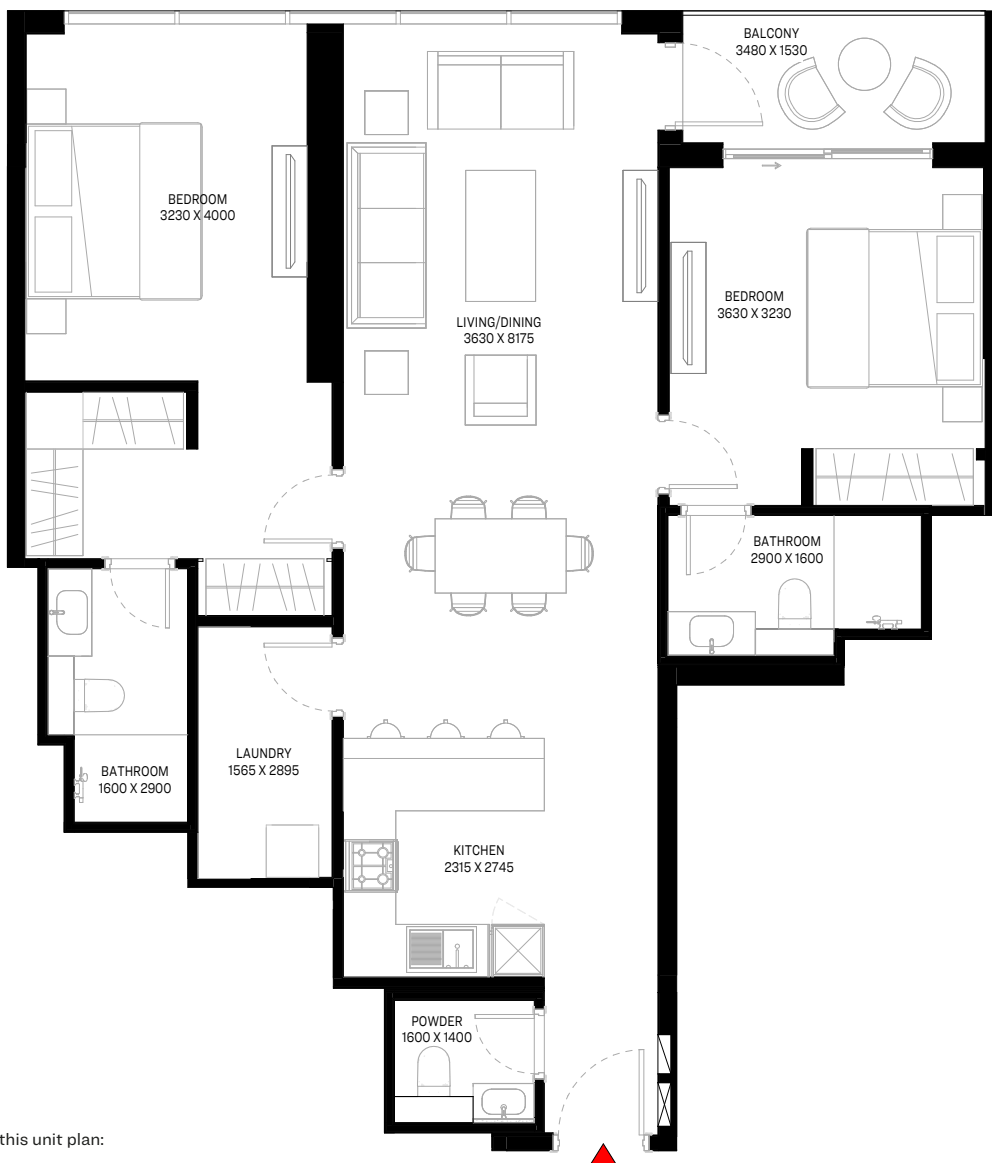
TYPE A (with powder room + balcony)

TOTAL SALEABLE AREA

SUITE = 1124.83 SQ.FT.
 BALCONY = 65.98 SQ.FT.
 TOTAL = 1190.81 SQ.FT.



UNIT



List of unit numbers with this unit plan:

VIEWS

Hartland, Waterfront
 1004,1104,1204,1304,1404,1504

Hartland, Waterfront, Ras Al Khor Sanctuary
 1604, 1704, 1804, 1904, 2204, 2304, 2404, 2504, 2604, 2704, 2804, 2904, 3004, 3104, 3204, 3304

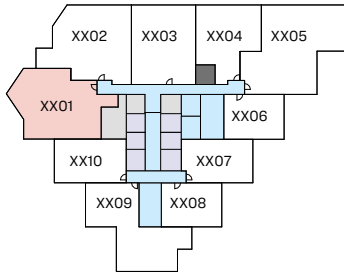
Disclaimer: 1. All dimensions are in metric, measured to wall finishes. 2. All materials, dimensions & drawings are approximate. 3. Information is subject to change without notice, at developer's absolute discretion. 4. Actual area may vary from the stated area. 5. Drawing are not to scale. 6. All images used are for illustrative purpose only and do not represent the actual size, features, specifications, fittings and furnishings. 7. The developer reserves the right to make revisions/ alterations, at its absolute discretion, without any liability whatsoever.

2.5 BEDROOM APARTMENT

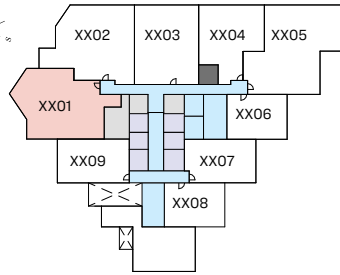
TYPE D (with study room, maid room and powder room + balcony)

TOTAL SALEABLE AREA

SUITE = 1455.39 SQ.FT.
BALCONY = 154.79 SQ.FT.
TOTAL = 1610.18 SQ.FT.



TYPICAL FLOOR PLAN
(10,12,14,16,18,22,24,26,28,30,32)_LOWER LEVEL



TYPICAL FLOOR PLAN
(11,13,15,17,23,25,27,31,33)_UPPER LEVEL

UNIT



List of unit numbers with this unit plan:

VIEWS

Hartland, Downtown

1001, 1101, 1201, 1301, 1401, 1501

Hartland, Downtown, Ras Al Khor Sanctuary

1601, 1701, 1801, 2201, 2301, 2401, 2501, 2601, 2701, 2801, 3001, 3101, 3201, 3301

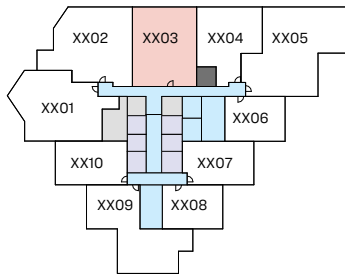
Disclaimer: 1. All dimensions are in metric, measured to wall finishes. 2. All materials, dimensions & drawings are approximate. 3. Information is subject to change without notice, at developer's absolute discretion. 4. Actual area may vary from the stated area. 5. Drawing are not to scale. 6. All images used are for illustrative purpose only and do not represent the actual size, features, specifications, fittings and furnishings. 7. The developer reserves the right to make revisions/ alterations, at its absolute discretion, without any liability whatsoever.

2.5 BEDROOM APARTMENT

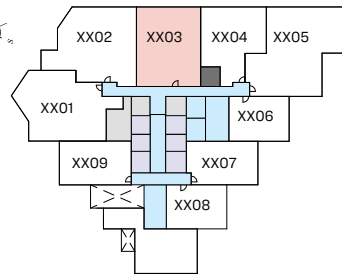
TYPE E (with study room, maid room and powder room + balcony)

TOTAL SALEABLE AREA

SUITE = 1437.95 SQ.FT.
BALCONY = 63.83 SQ.FT.
TOTAL = 1501.78 SQ.FT.



TYPICAL FLOOR PLAN
(10,12,14,16,18,22,24,26,28,30,32)_LOWER LEVEL



TYPICAL FLOOR PLAN
(11,13,15,17,19,23,25,27,29,31,33)_UPPER LEVEL

UNIT



List of unit numbers with this unit plan:

VIEWS

Hartland, Waterfront

1003, 1103, 1203, 1303, 1403, 1503

Hartland, Waterfront, Ras Al Khor Sanctuary

1603, 1703, 1803, 1903, 2203, 2303, 2403, 2503, 2603, 2703, 2803, 2903, 3003, 3103, 3203, 3303

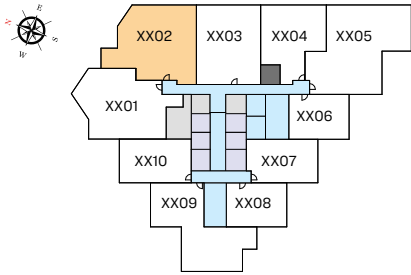
Disclaimer: 1. All dimensions are in metric, measured to wall finishes. 2. All materials, dimensions & drawings are approximate. 3. Information is subject to change without notice, at developer's absolute discretion. 4. Actual area may vary from the stated area. 5. Drawing are not to scale. 6. All images used are for illustrative purpose only and do not represent the actual size, features, specifications, fittings and furnishings. 7. The developer reserves the right to make revisions/ alterations, at its absolute discretion, without any liability whatsoever.

3 BEDROOM APARTMENT

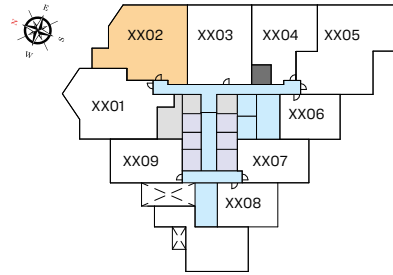
TYPE A (with maid room and powder room + balcony)

TOTAL SALEABLE AREA

SUITE = 1659.47 SQ.FT.
BALCONY = 87.62 SQ.FT.
TOTAL = 1747.09 SQ.FT.



TYPICAL FLOOR PLAN
(10,14,16,22,26,28,32)_LOWER LEVEL



TYPICAL FLOOR PLAN
(11,13,15,17,19,23,25,27,29,31,33)_UPPER LEVEL

UNIT



List of unit numbers with this unit plan:

VIEWS

Hartland, Waterfront
1002, 1102, 1302, 1402, 1502

Hartland, Waterfront, Ras Al Khor Sanctuary
1602, 1702, 1902, 2202, 2302, 2502, 2602, 2702, 2802, 2902, 3102, 3202, 3302

Disclaimer: 1. All dimensions are in metric, measured to wall finishes. 2. All materials, dimensions & drawings are approximate. 3. Information is subject to change without notice, at developer's absolute discretion. 4. Actual area may vary from the stated area. 5. Drawing are not to scale. 6. All images used are for illustrative purpose only and do not represent the actual size, features, specifications, fittings and furnishings. 7. The developer reserves the right to make revisions/ alterations, at its absolute discretion, without any liability whatsoever.

3 BEDROOM APARTMENT

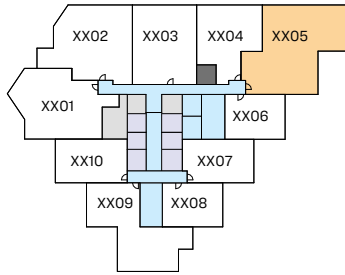
TYPE C (with maid room and powder room + balcony)

TOTAL SALEABLE AREA

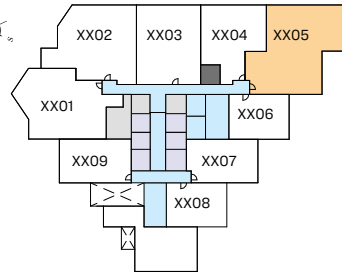
SUITE = 1914.68 SQ.FT.

BALCONY = 155.43 SQ.FT.

TOTAL = 2070.11 SQ.FT.



TYPICAL FLOOR PLAN
(10,12,14,16,18,22,24,26,28,30,32)_LOWER LEVEL



TYPICAL FLOOR PLAN
(11,13,15,17,19,23,25,27,29,31,33)_UPPER LEVEL

UNIT



List of unit numbers with this unit plan:

VIEWS

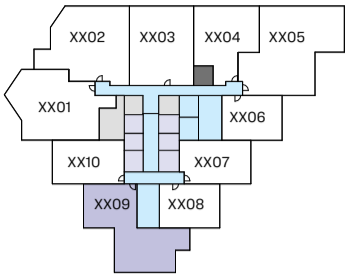
Hartland, Waterfront, Amenities
1005, 1105, 1205, 1305, 1405, 1505

Hartland, Waterfront, Ras Al Khor Sanctuary
1605, 1705, 1805, 1905, 2205, 2305, 2405, 2505, 2605, 2705, 2805, 2905, 3005, 3105, 3205, 3305

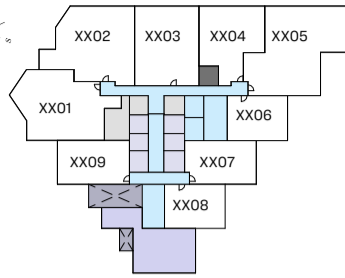
Disclaimer: 1. All dimensions are in metric, measured to wall finishes. 2. All materials, dimensions & drawings are approximate. 3. Information is subject to change without notice, at developer's absolute discretion. 4. Actual area may vary from the stated area. 5. Drawing are not to scale. 6. All images used are for illustrative purpose only and do not represent the actual size, features, specifications, fittings and furnishings. 7. The developer reserves the right to make revisions/ alterations, at its absolute discretion, without any liability whatsoever.

4 BEDROOM DUPLEX APARTMENT
TYPE A (with maid room and powder room + balcony)

TOTAL SALEABLE AREA
 SUITE = 2473.65 SQ.FT.
 BALCONY = 251.01 SQ.FT.
 TOTAL = 2724.66 SQ.FT.



TYPICAL FLOOR PLAN
 (10,12,14,16,18,22,24,26,28,30,32)_LOWER LEVEL



TYPICAL FLOOR PLAN
 (L11,13,15,17,19,23,25,27,29,31,33)_UPPER LEVEL

UNIT



LOWER LEVEL



UPPER LEVEL

List of unit numbers with this unit plan:

VIEWS

Hartland, Downtown, Waterfront, Amenities
 1009, 1209, 1409

Hartland, Downtown, Waterfront
 1609, 1809, 2209, 2409, 2609, 2809, 3009, 3209

Disclaimer: 1. All dimensions are in metric, measured to wall finishes. 2. All materials, dimensions & drawings are approximate. 3. Information is subject to change without notice, at developer's absolute discretion. 4. Actual area may vary from the stated area. 5. Drawing are not to scale. 6. All images used are for illustrative purpose only and do not represent the actual size, features, specifications, fittings and furnishings. 7. The developer reserves the right to make revisions/ alterations, at its absolute discretion, without any liability whatsoever.



TANAMI
P R O P E R T I E S

CONTACT US

 +971 4 248 3400 |  +971 55 162 3236

Email Us

info@tanamiproperties.ae

For More Info...

www.tanamiproperties.com/Projects/Sobha-Waves-Opulence



ADDRESS

Office 3405, Marina Plaza,
Al Marsa Street, Dubai Marina, UAE

SOBHA
REALTY