

A photograph of a bridge railing over water at sunset. The railing is in the foreground, and the water reflects the warm light of the setting sun. The title text is overlaid on the image.

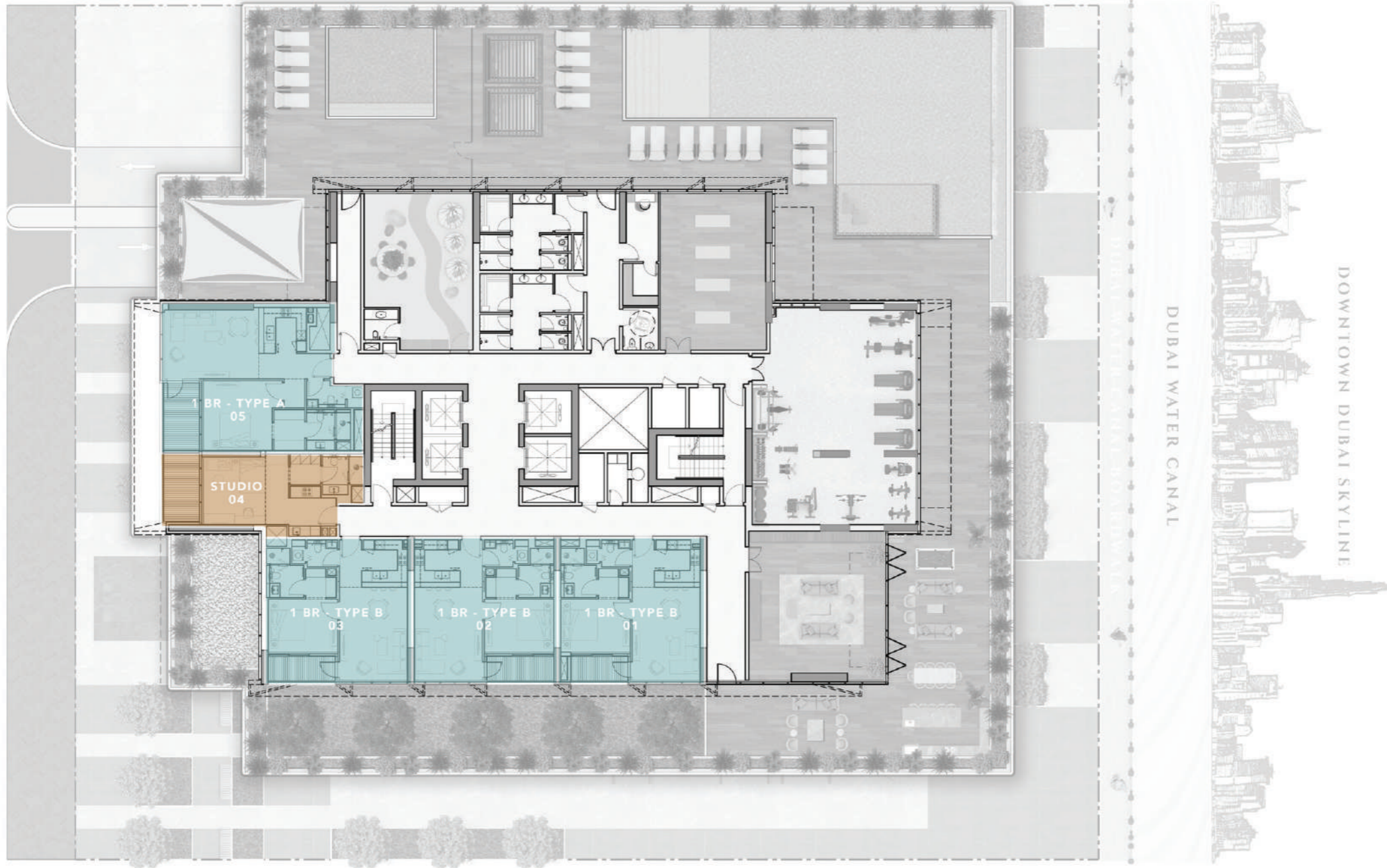
THE QUAYSIDE

BY ELLINGTON

PROJECT BRIEF

FLOOR PLANS

1ST FLOOR TYPICAL PLAN



1ST FLOOR TYPICAL PLAN



STUDIO APARTMENTS



1 BEDROOM APARTMENTS



2ND - 15TH FLOOR TYPICAL PLAN



2ND-15TH FLOOR TYPICAL PLAN

 STUDIO APARTMENTS

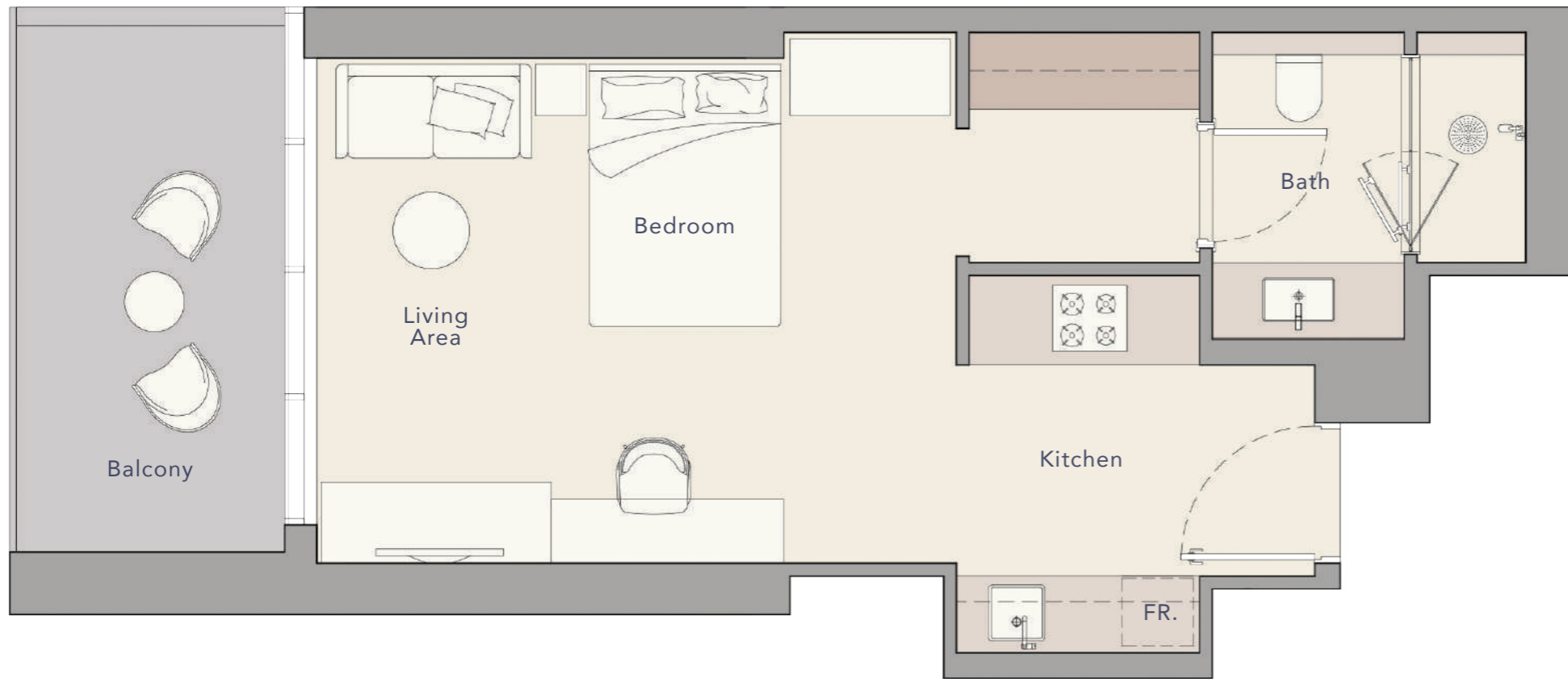
 1 BEDROOM APARTMENTS

 2 BEDROOM APARTMENTS

 3 BEDROOM APARTMENTS



STUDIO



Internal Living Area

Outdoor Living Area

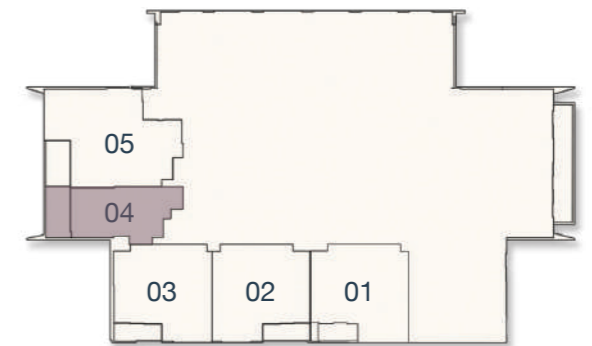
Total Living Area

438.52 sq.ft.

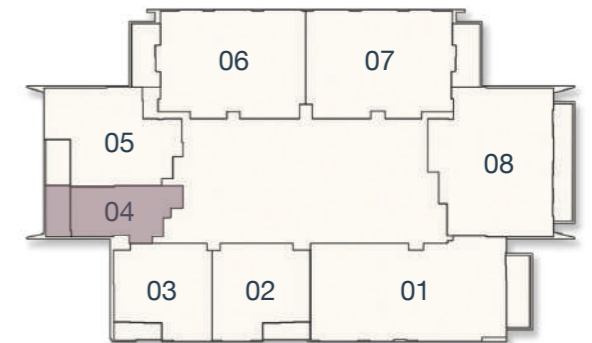
103.55 sq.ft.

542.07 sq.ft.

1ST FLOOR



2ND - 15TH FLOOR



1 BEDROOM TYPE A



Internal Living Area

Outdoor Living Area

Total Living Area

700.30 sq.ft.

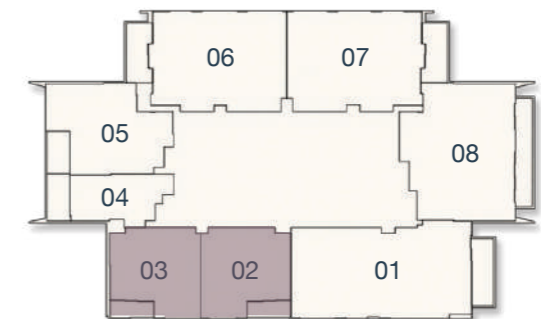
68.46 sq.ft.

768.76 sq.ft.

1ST FLOOR



2ND - 15TH FLOOR



1 BEDROOM TYPE B



Internal Living Area

Outdoor Living Area

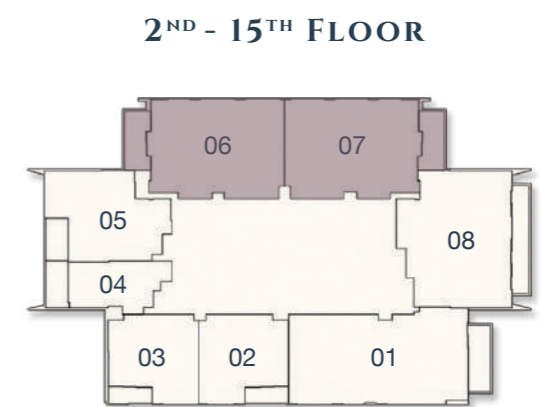
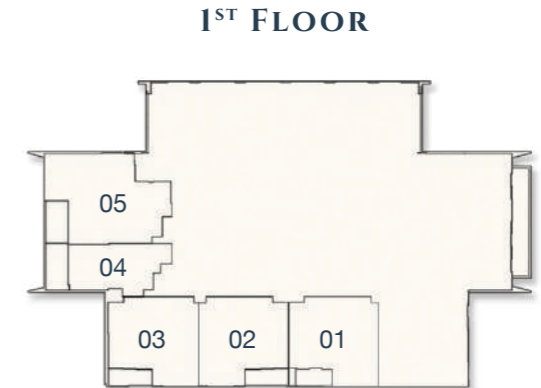
Total Living Area

893.19 sq.ft.

92.89 sq.ft.

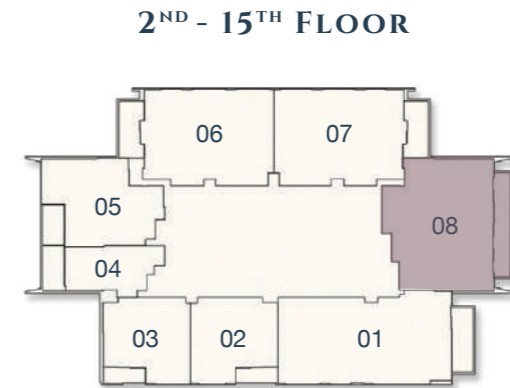
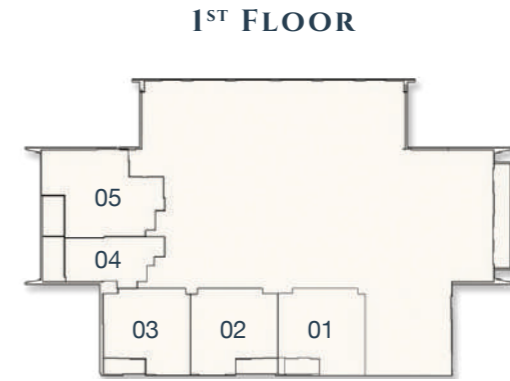
986.08 sq.ft.

2 BEDROOM TYPE A



Internal Living Area	Outdoor Living Area	Total Living Area
1280.47 sq.ft.	139.93 sq.ft.	1420.41 sq.ft.

2 BEDROOM TYPE B



Internal Living Area

Outdoor Living Area

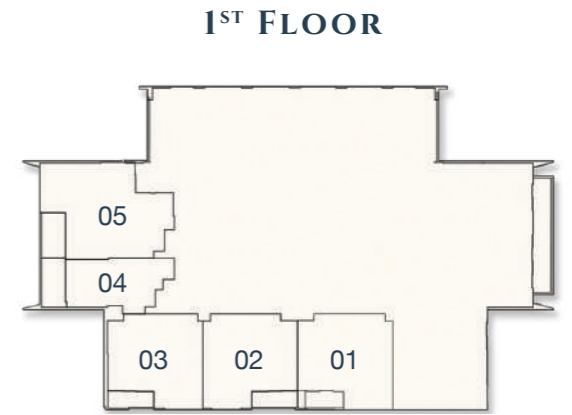
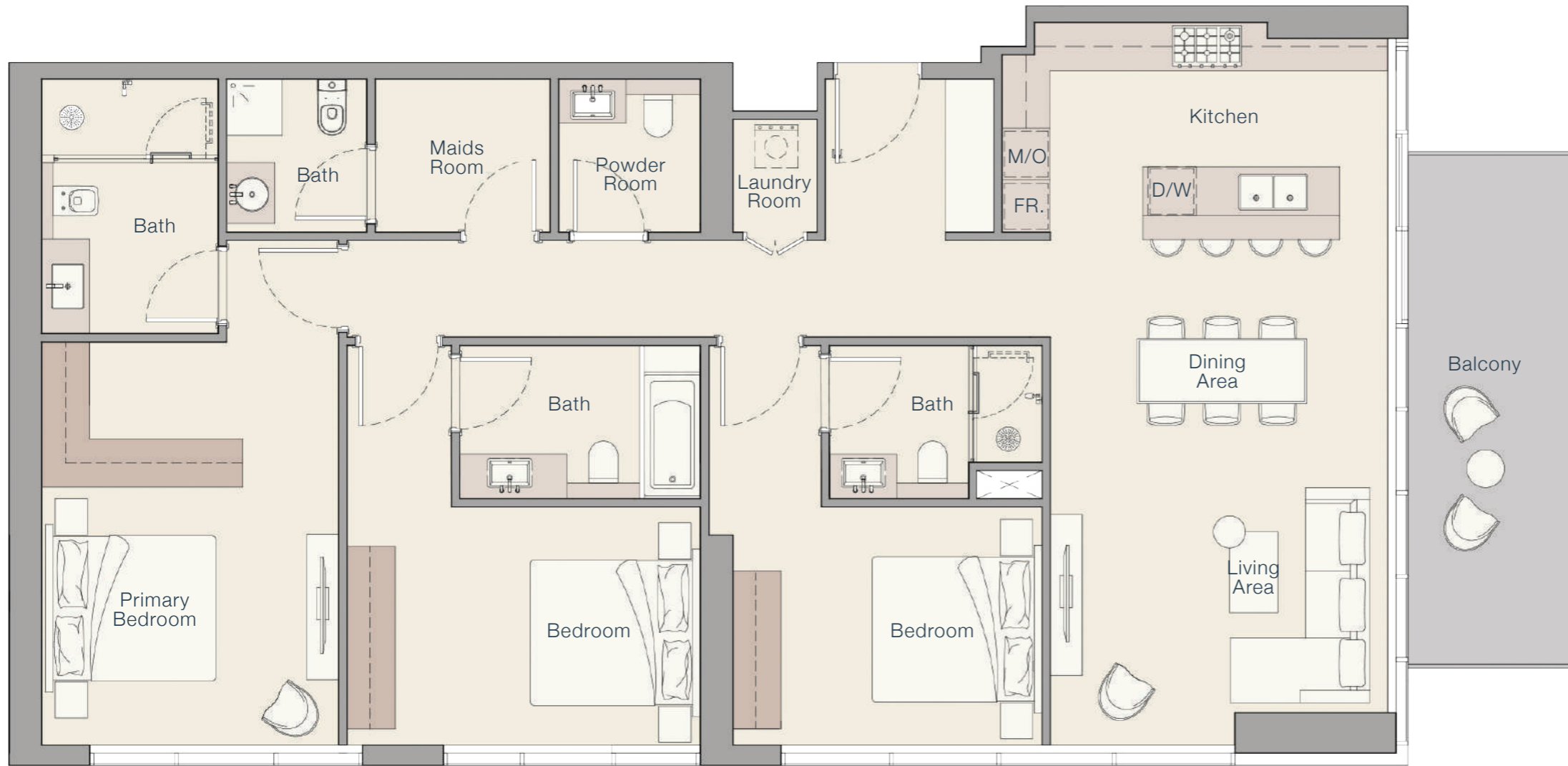
Total Living Area

1382.19 sq.ft.

185.68 sq.ft.

1567.87 sq.ft.

3 BEDROOM TYPE A



Internal Living Area

Outdoor Living Area

Total Living Area

1595.21 sq.ft.

144.02 sq.ft.

1739.23 sq.ft.



TANAMI
P R O P E R T I E S

CONTACT US

 +971 4 248 3400 |  +971 55 162 3236

Email Us

info@tanamiproperties.ae

For More Info...

www.tanamiproperties.com/Projects/The-Quayside



ADDRESS

Office 3405, Marina Plaza,
Al Marsa Street, Dubai Marina, UAE