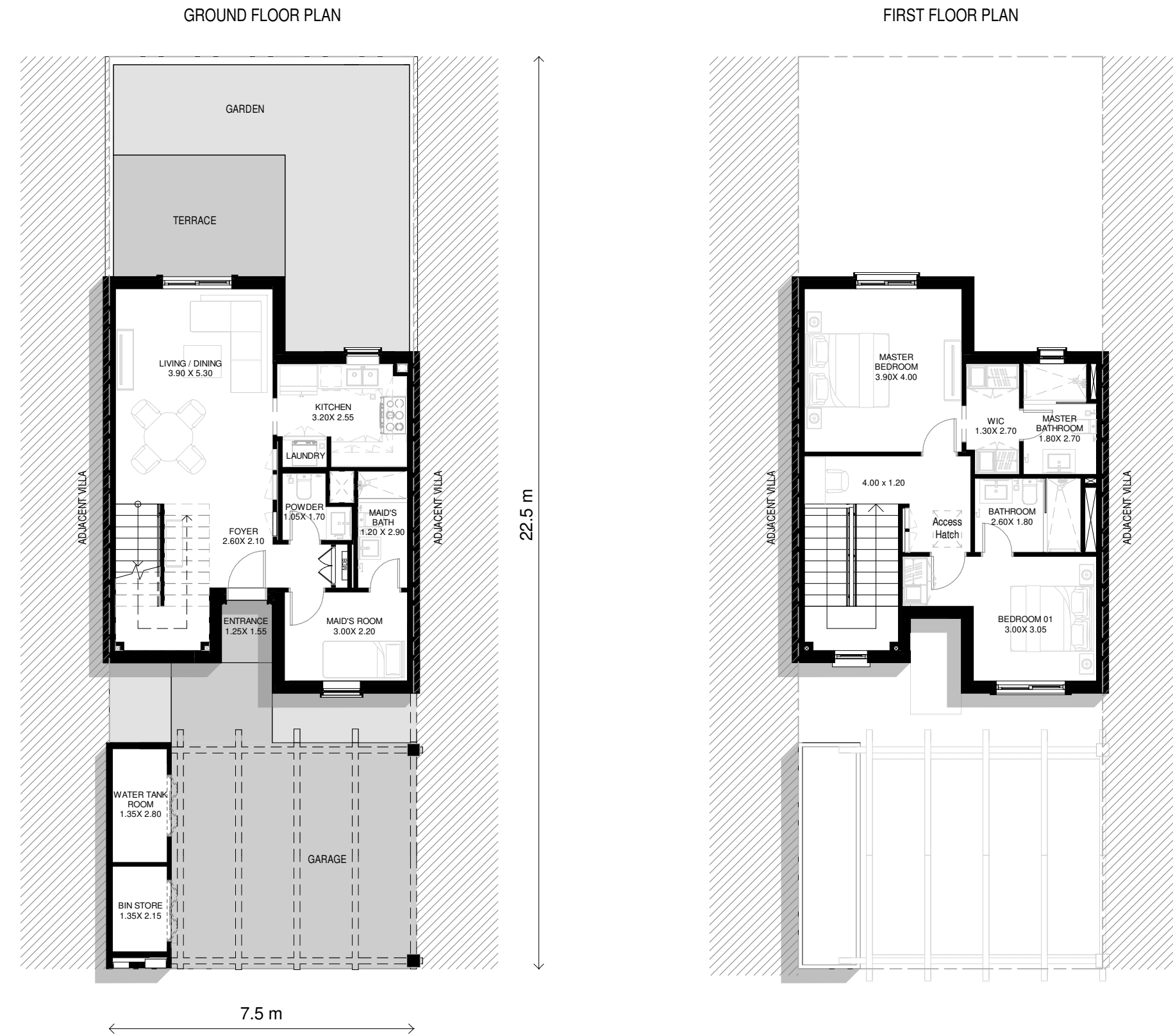
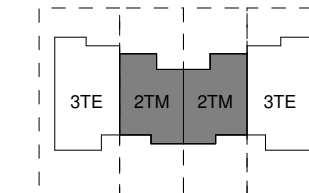


# TOWNHOUSES - 2BR - M

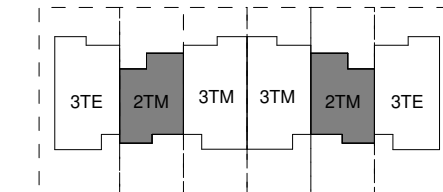


## KEY PLANS

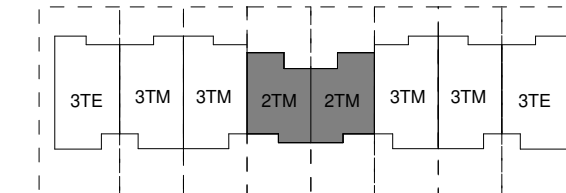
### GROUPING - 4



### GROUPING - 6



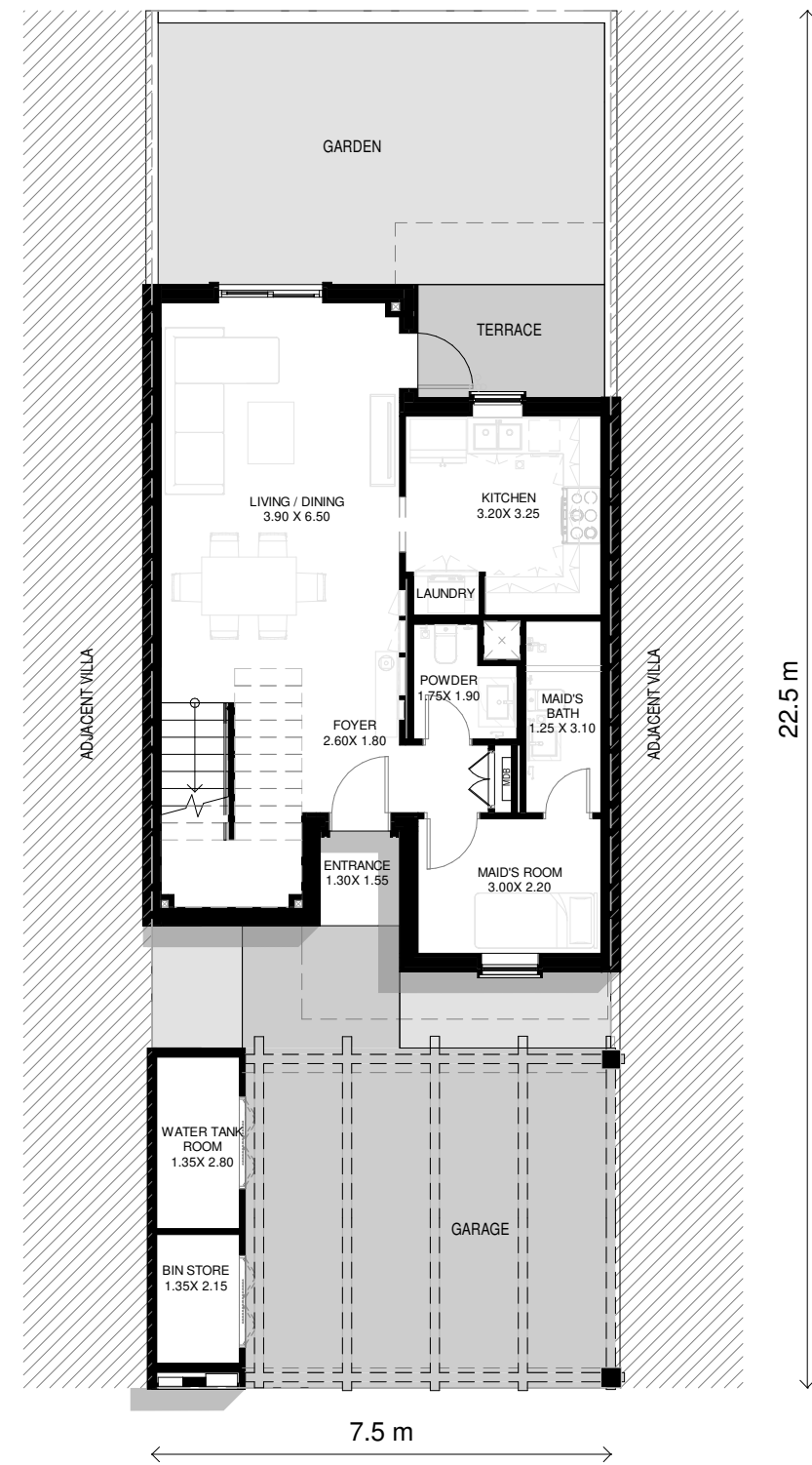
### GROUPING - 8



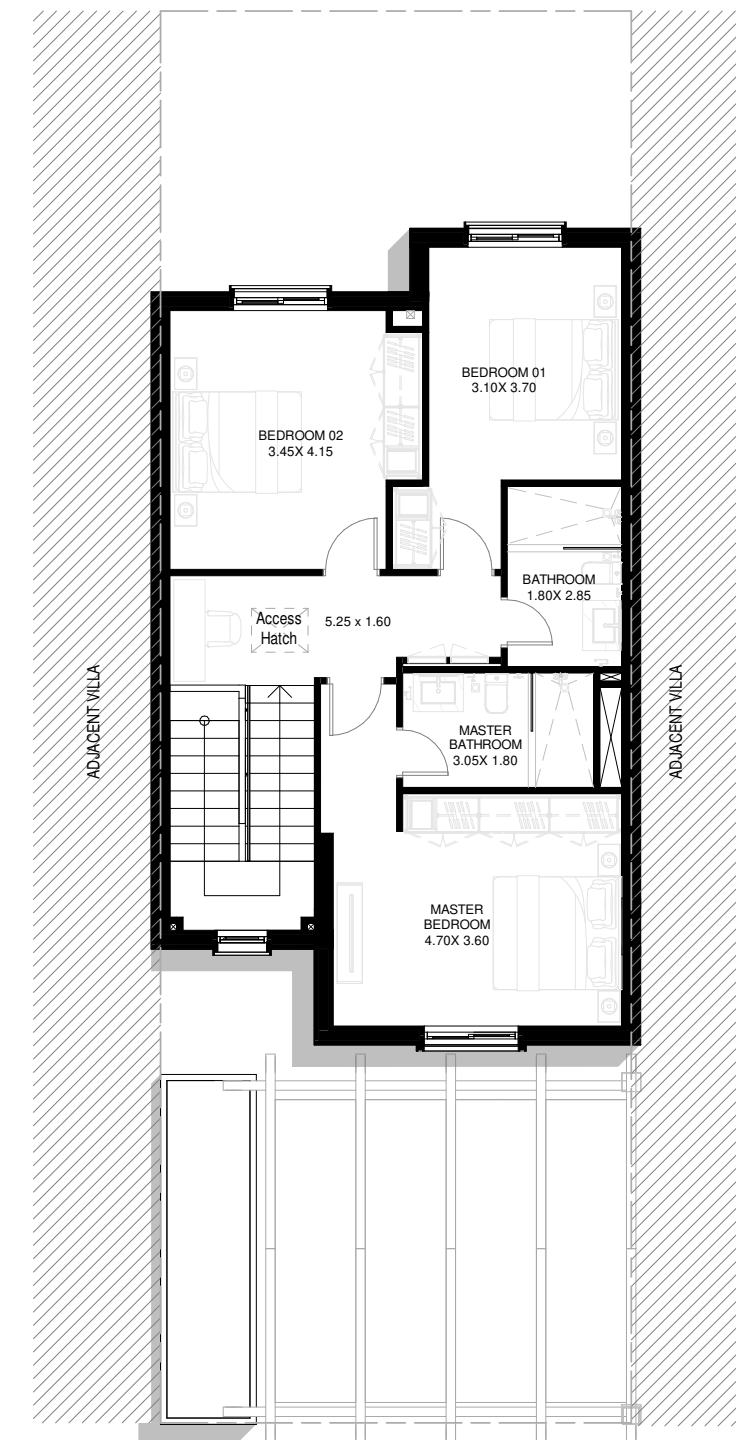
**DISCLAIMER:** Note that this floor plan was produced prior to the completion of construction and is indicative only and not to scale. Changes may be made during the development and areas, fittings, finishes and specifications are subject to change without notice in accordance with the provision of the contract of sale. The furniture depicted is not included with any sale and should not be taken to indicate the final positions of power points, TV connections and the like. Prospective purchasers must rely on their own enquiries. Bulkheads necessary for services and structure are not depicted.

# TOWNHOUSES - 3BR - M

GROUND FLOOR PLAN

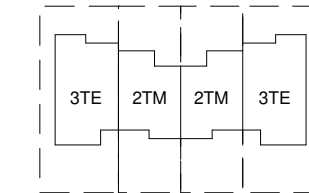


FIRST FLOOR PLAN

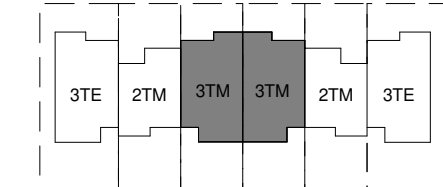


KEY PLANS

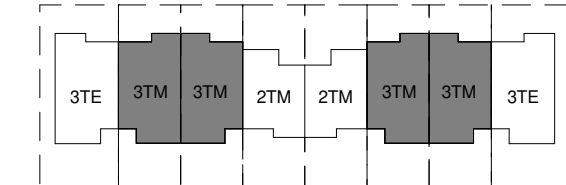
GROUPING - 4



GROUPING - 6

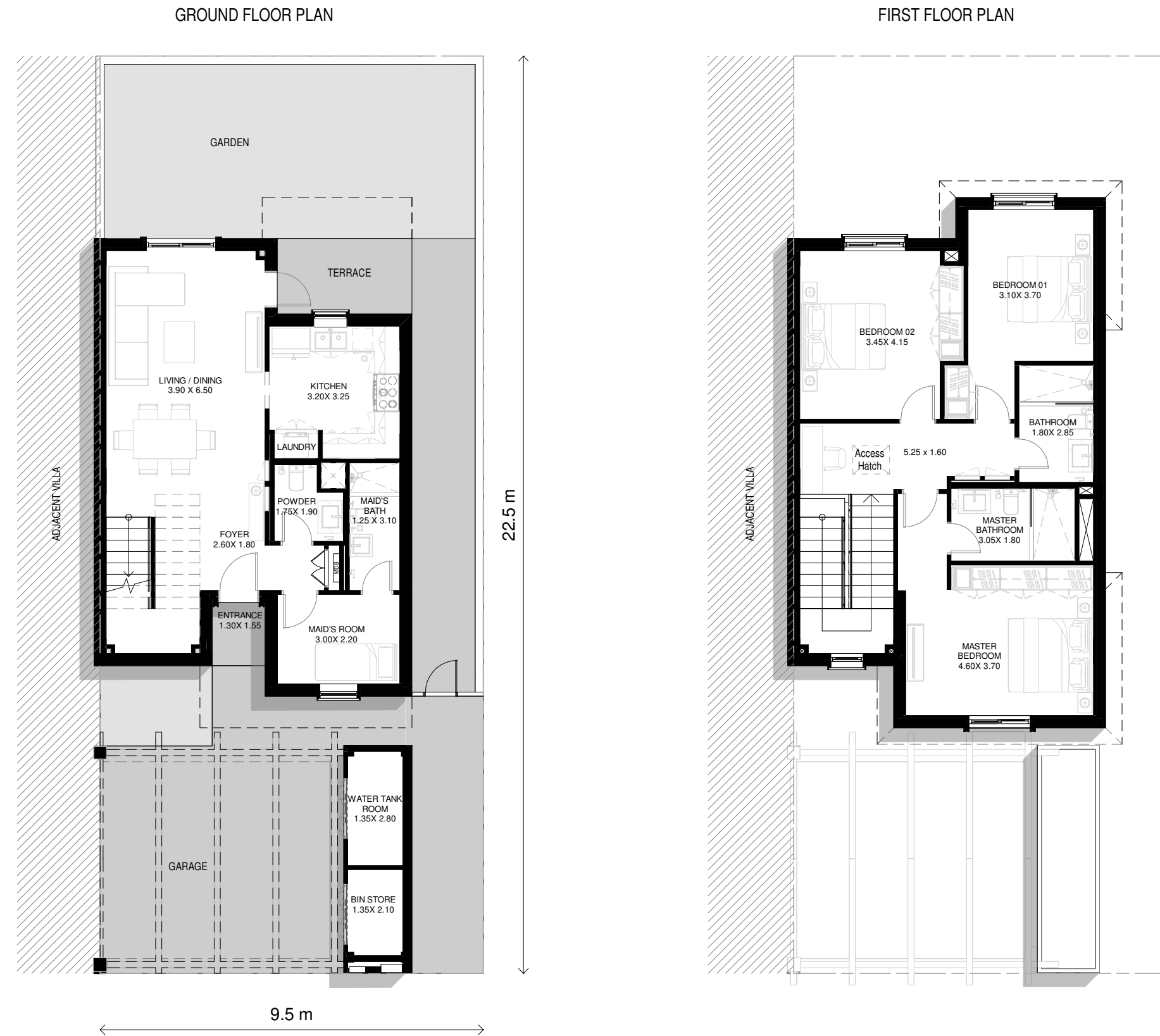


GROUPING - 8



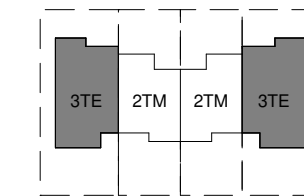
**DISCLAIMER:** Note that this floor plan was produced prior to the completion of construction and is indicative only and not to scale. Changes may be made during the development and areas, fittings, finishes and specifications are subject to change without notice in accordance with the provision of the contract of sale. The furniture depicted is not included with any sale and should not be taken to indicate the final positions of power points, TV connections and the like. Prospective purchasers must rely on their own enquiries. Bulkheads necessary for services and structure are not depicted.

# TOWNHOUSES - 3BR - E

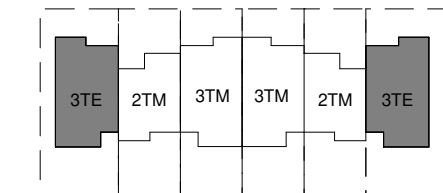


## KEY PLANS

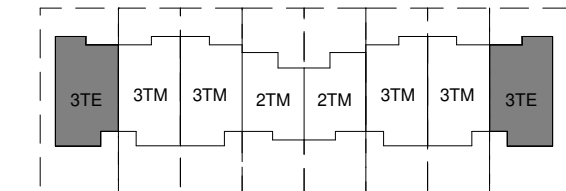
### GROUPING - 4



### GROUPING - 6



### GROUPING - 8



**DISCLAIMER:** Note that this floor plan was produced prior to the completion of construction and is indicative only and not to scale. Changes may be made during the development and areas, fittings, finishes and specifications are subject to change without notice in accordance with the provision of the contract of sale. The furniture depicted is not included with any sale and should not be taken to indicate the final positions of power points, TV connections and the like. Prospective purchasers must rely on their own enquiries. Bulkheads necessary for services and structure are not depicted.

# VILLA - 4BR



**DISCLAIMER:** Note that this floor plan was produced prior to the completion of construction and is indicative only and not to scale. Changes may be made during the development and areas, fittings, finishes and specifications are subject to change without notice in accordance with the provision of the contract of sale. The furniture depicted is not included with any sale and should not be taken to indicate the final positions of power points, TV connections and the like. Prospective purchasers must rely on their own enquiries. Bulkheads necessary for services and structure are not depicted.



### CONTACT US

 +971 4 248 3400 |  +971 55 162 3236

### Email Us

info@tanamiproperties.ae

For More Info...

[www.tanamiproperties.com/Projects/Yas-Park-Gate](http://www.tanamiproperties.com/Projects/Yas-Park-Gate)



### **ADDRESS**

Office 3405, Marina Plaza,  
Al Marsa Street, Dubai Marina, UAE