



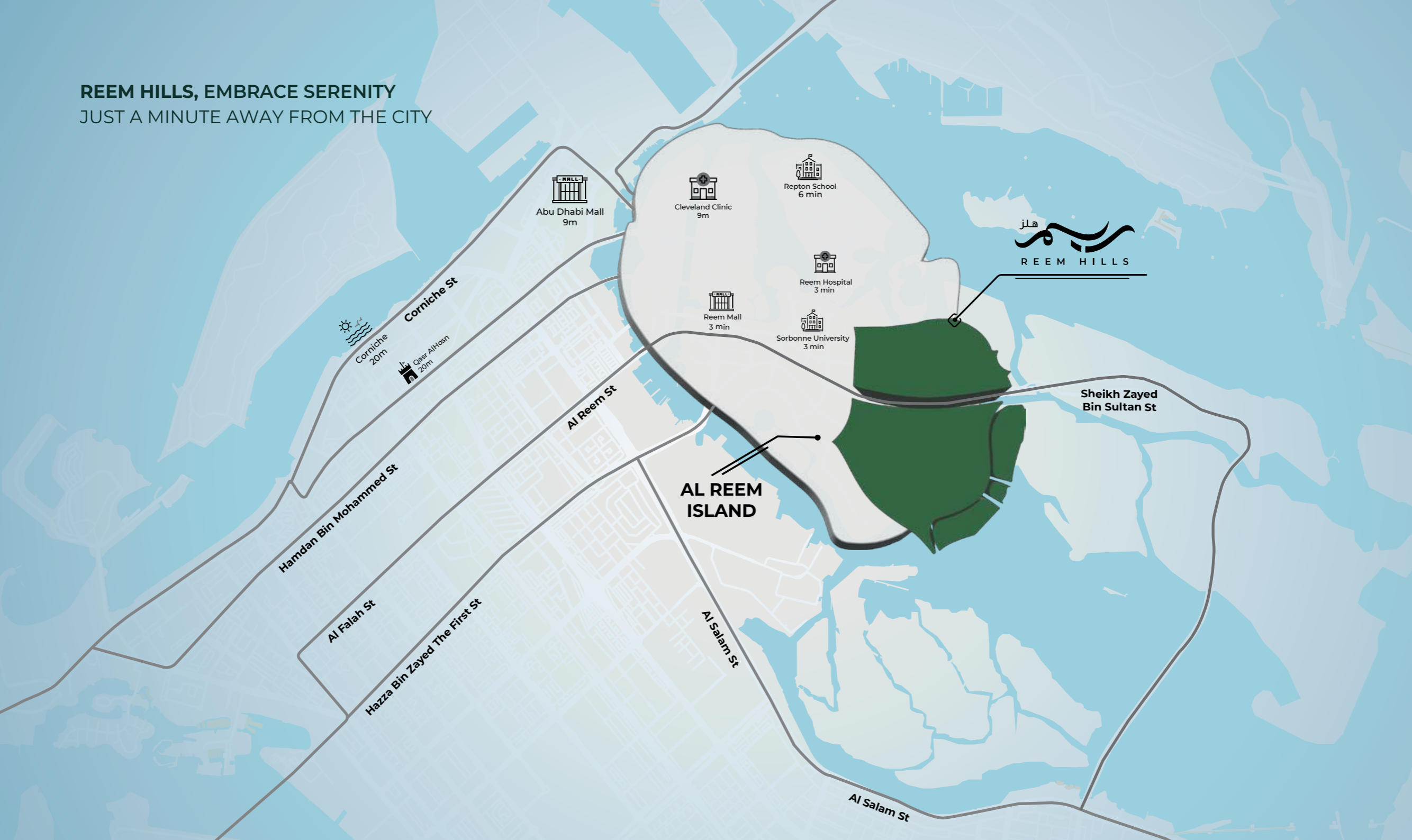
هلز
REEM HILLS

REEM HILLS NEW PHASE

**PEAK LIVING
IN THE HEART
OF THE CAPITAL**



REEM HILLS, EMBRACE SERENITY
JUST A MINUTE AWAY FROM THE CITY



Abu Dhabi Mall
9m

Cleveland Clinic
9m

Repton School
6 min

هجز
REEM HILLS

Reem Hospital
3 min

Reem Mall
3 min

Sorbonne University
3 min

Corniche
20m

Qasr AlHoesn
20m

Corniche St

Hamdan Bin Mohammed St

Al Falah St

Hazza Bin Zayed The First St

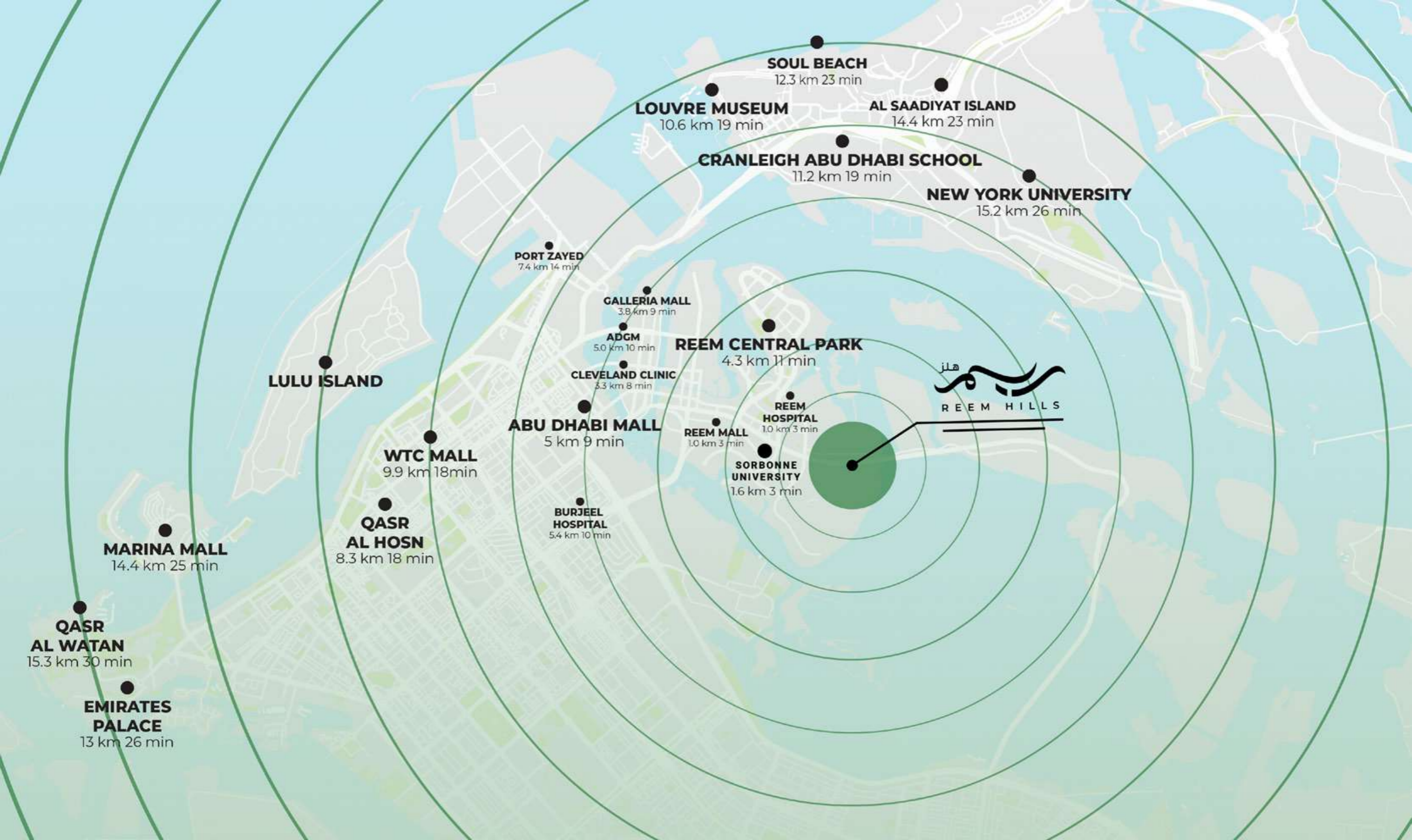
Al Reem St

AL REEM ISLAND

Al Salam St

Sheikh Zayed Bin Sultan St

Al Salam St



SOUL BEACH
12.3 km 23 min

LOUVRE MUSEUM
10.6 km 19 min

AL SAADIYAT ISLAND
14.4 km 23 min

CRANLEIGH ABU DHABI SCHOOL
11.2 km 19 min

NEW YORK UNIVERSITY
15.2 km 26 min

PORT ZAYED
7.4 km 14 min

GALLERIA MALL
3.8 km 9 min

ADGM
5.0 km 10 min

REEM CENTRAL PARK
4.3 km 11 min

CLEVELAND CLINIC
3.3 km 8 min



REEM HOSPITAL
1.0 km 3 min

REEM MALL
1.0 km 3 min

SORBONNE UNIVERSITY
1.6 km 3 min

ABU DHABI MALL
5 km 9 min

BURJEEL HOSPITAL
5.4 km 10 min

LULU ISLAND

WTC MALL
9.9 km 18 min

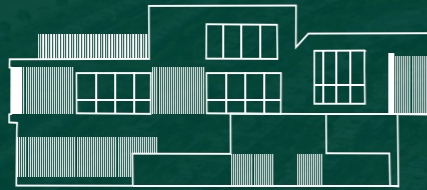
QASR AL HOSN
8.3 km 18 min

MARINA MALL
14.4 km 25 min

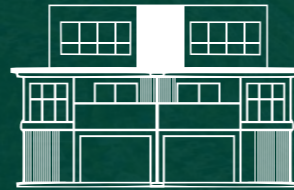
QASR AL WATAN
15.3 km 30 min

EMIRATES PALACE
13 km 26 min

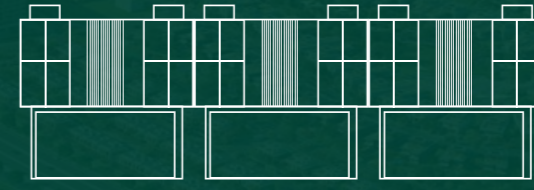
REEM HILLS IS THE BEGINNING OF EVERYTHING BEAUTIFUL



VILLAS
4 TO 7 BEDROOM



TWIN VILLAS
4 BEDROOM



TOWNHOUSES
3 BEDROOM

- An unparalleled first-gated community in the heart of the capital
- Expansive spaces
- Variety of designs & layouts
- Competitive prices
- Dominating proximity to the convenience of the capital
- Luxury and serenity in the heart of the capital

STEP INTO A WORLD OF OPULENT
COMFORT, TRANQUILLITY AND LUXURY



ENJOY THE BEAUTY OF NATURE







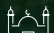






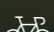


A LIFESTYLE THAT BRINGS YOU
MORE HAPPINESS AND COMFORT


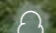
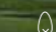
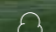


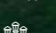


FACILITIES AND BENEFITS AT YOUR DOORSTEP

AMENITIES & RECREATIONAL AREAS

-  GATED COMMUNITY
-  PRIVATE SCHOOL
-  COMMUNITY CENTRE
-  EARLY LEARNING CENTRE
-  MOSQUES
-  RETAIL
-  SANDY BEACHES
-  CANAL PROMENADE
-  RESTAURANTS & CAFES
-  MEDICAL SERVICES
-  CLUBHOUSES
-  JOGGING & CYCLING TRACKS

PARKS

-  NEIGHBORHOOD PARK
-  LINEAR PARK
-  POCKET PARK
-  LANDSCAPED HILL
-  COMMUNITY PARKS & PLAYING AREAS
-  SPORTS COURTS
-  SHADED SEATING AREAS











THE NEW PHASE.. A PERFECT COMBINATION
OF LUXURY & SPACIOUSNESS







PARK VALLEY

NORTH BAY

GARDEN HOMES

COAST WAY

BEACH BAY



CHOOSE YOUR HOME OF LUXURY & SPACIOUSNESS

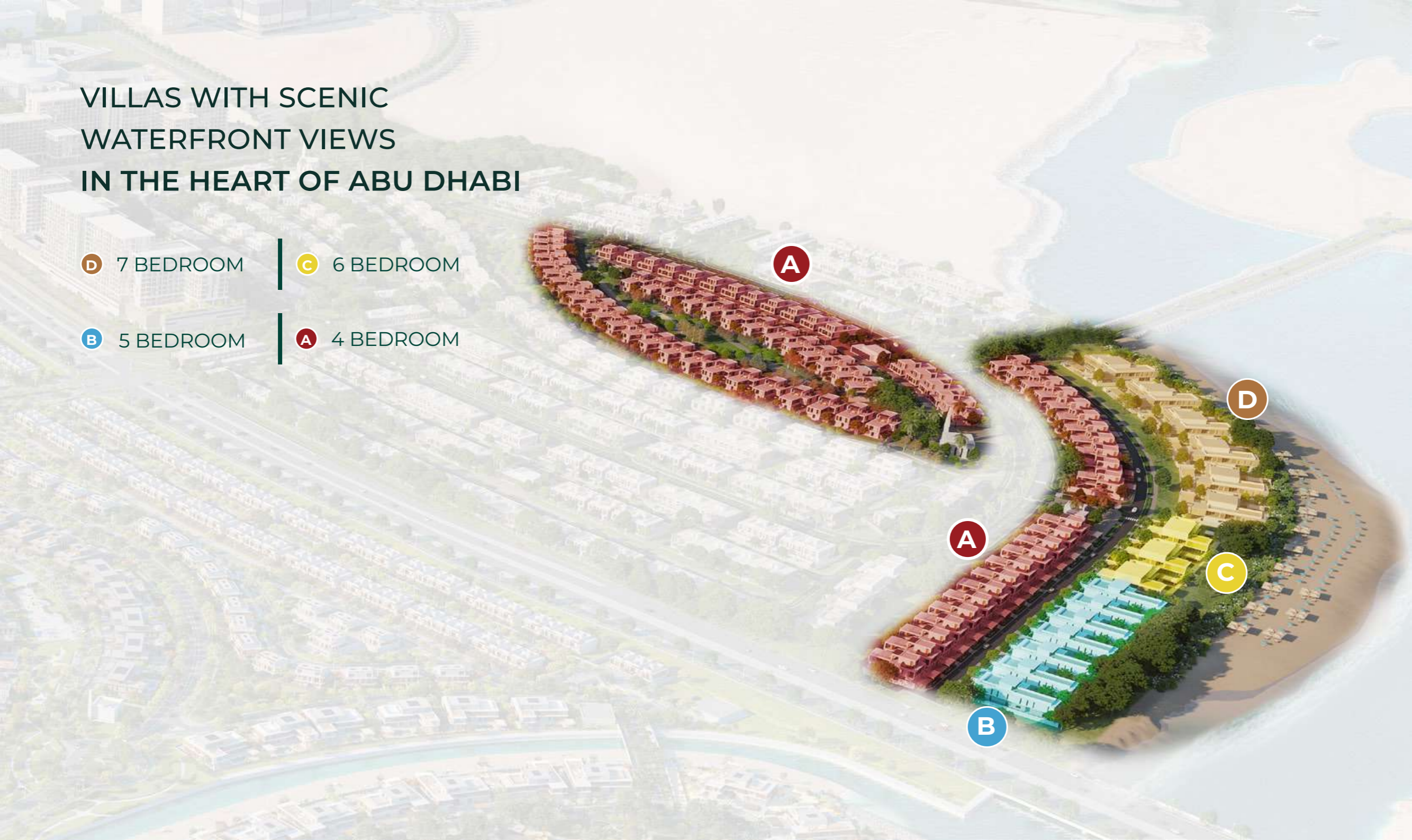
VILLAS WITH SCENIC WATERFRONT VIEWS IN THE HEART OF ABU DHABI

D 7 BEDROOM

C 6 BEDROOM

B 5 BEDROOM

A 4 BEDROOM



7 BEDROOM VILLA

MINIMAL DESIGN



A PLACE, WHICH BRINGS ALL
YOUR DREAMS TOGETHER



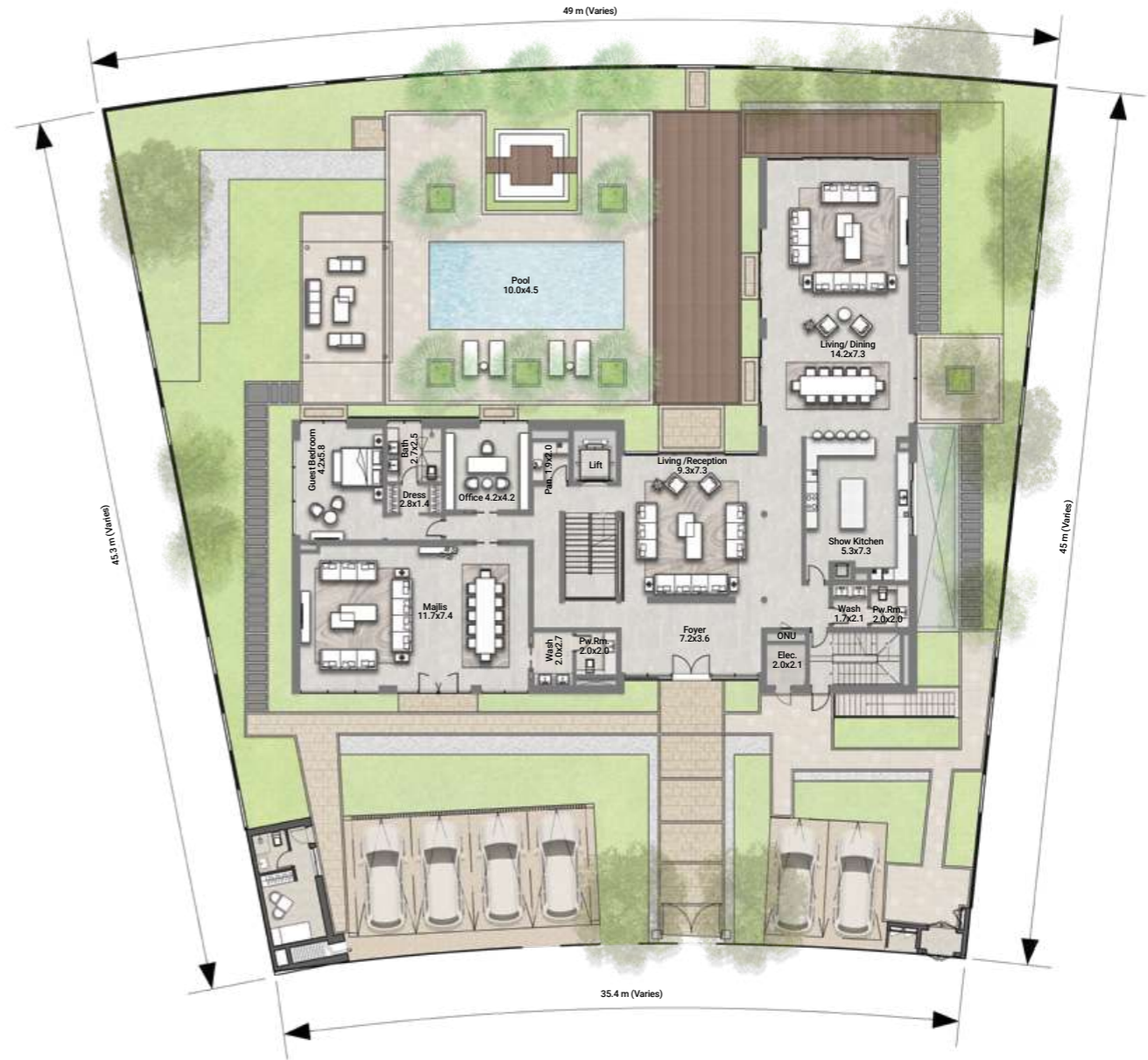


7 BEDROOM VILLA

MINIMAL DESIGN

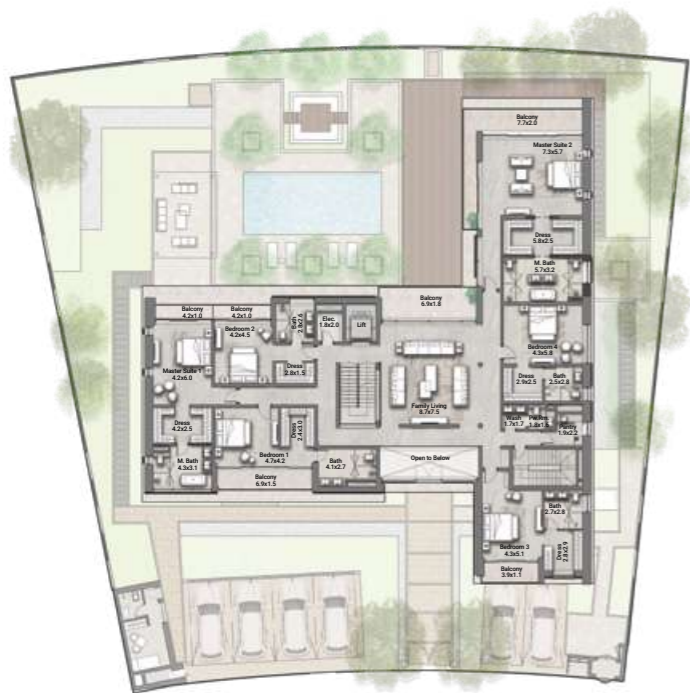
NO. OF BEDROOMS	07
FLOOR CONFIGURATION	B+G+1+Roof
TOTAL SALEABLE AREA	17,435 sqft
PLOT SIZE	20,082 sqft*

*Starting from

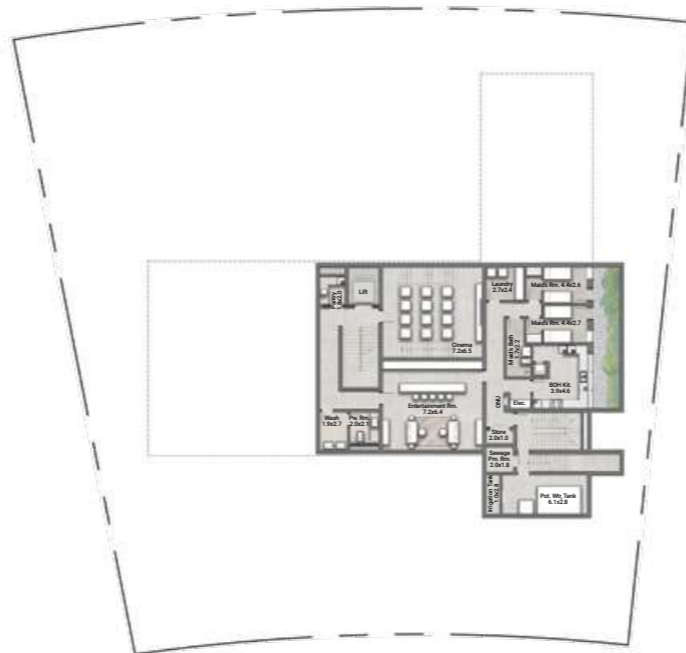


GROUND FLOOR

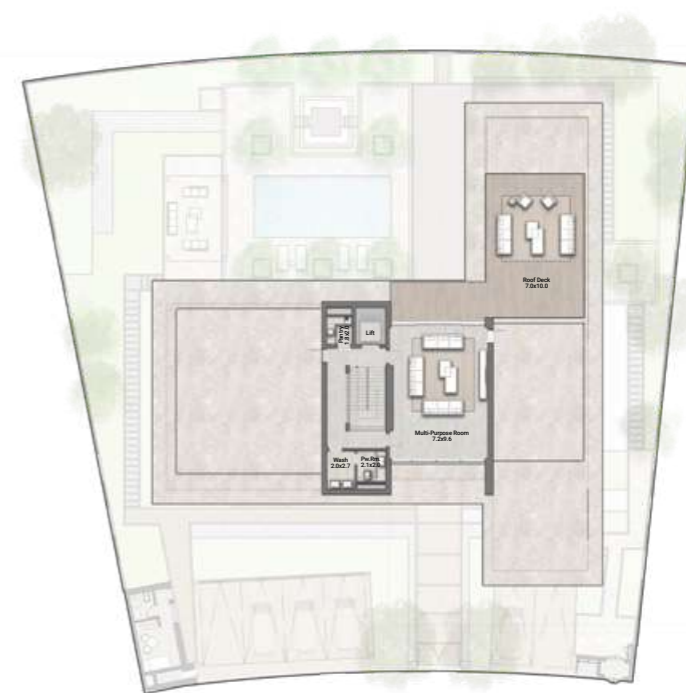
All materials, dimensions, and drawings are approximate only, including actual areas. / Information is subject to change at developer's discretion, without notice, and developer reserves the right to make revisions without liability. / All images used are for illustrative purposes only and do not represent the actual size, features, specifications, fittings, and furnishings.



FIRST FLOOR



BASEMENT



ROOF FLOOR

All materials, dimensions, and drawings are approximate only, including actual areas. / Information is subject to change at developer's discretion, without notice, and developer reserves the right to make revisions without liability. / All images used are for illustrative purposes only and do not represent the actual size, features, specifications, fittings, and furnishings.

6 BEDROOM VILLA

MINIMAL DESIGN



SERENITY LIVING
IN THE HEART OF THE CAPITAL

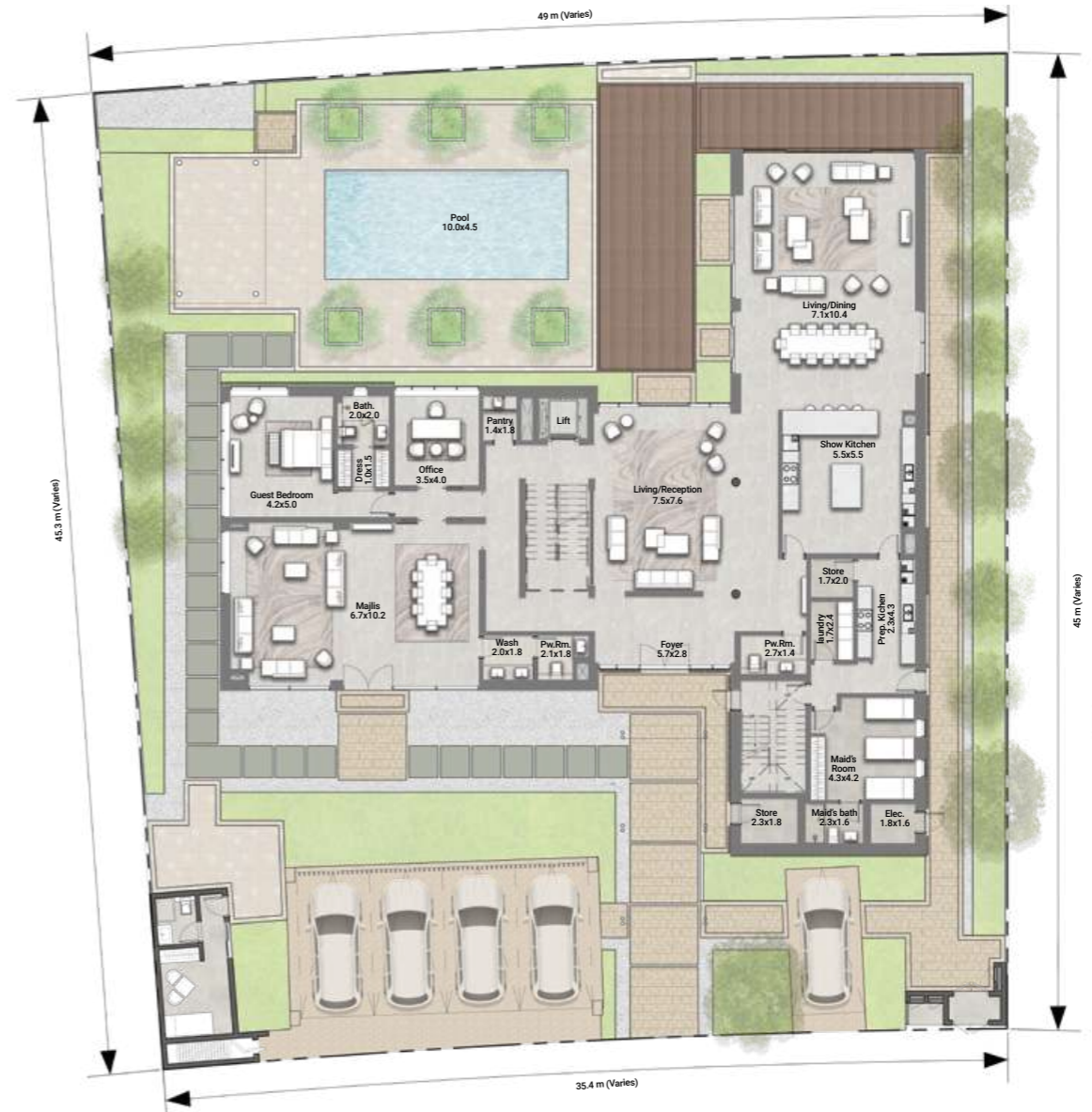




6 BEDROOM VILLA MINIMAL DESIGN

NO. OF BEDROOMS	06
FLOOR CONFIGURATION	G+1+Roof
TOTAL SALEABLE AREA	13,108 sqft
PLOT SIZE	17,480 sqft*

*Starting from

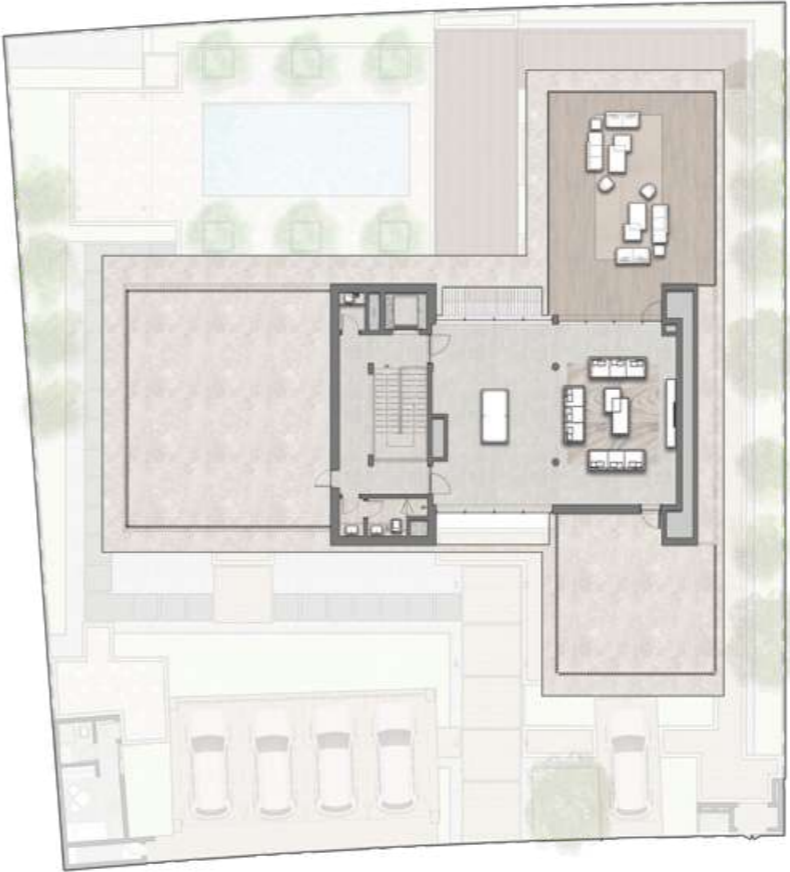


GROUND FLOOR

All materials, dimensions, and drawings are approximate only, including actual areas. / Information is subject to change at developer's discretion, without notice, and developer reserves the right to make revisions without liability. / All images used are for illustrative purposes only and do not represent the actual size, features, specifications, fittings, and furnishings.



FIRST FLOOR



ROOF FLOOR

All materials, dimensions, and drawings are approximate only, including actual areas. / Information is subject to change at developer's discretion, without notice, and developer reserves the right to make revisions without liability. / All images used are for illustrative purposes only and do not represent the actual size, features, specifications, fittings, and furnishings.

5 BEDROOM VILLA

MINIMAL DESIGN



095

A VIEW OVERLOOKING THE POOL
AND THE PARK





5 BEDROOM VILLA

MINIMAL DESIGN

NO. OF BEDROOMS	05
FLOOR CONFIGURATION	G+1+Roof
TOTAL SALEABLE AREA	10,487 sqft
PLOT SIZE	11,625 sqft*

*Starting from



GROUND FLOOR

All materials, dimensions, and drawings are approximate only, including actual areas. / Information is subject to change at developer's discretion, without notice, and developer reserves the right to make revisions without liability. / All images used are for illustrative purposes only and do not represent the actual size, features, specifications, fittings, and furnishings.



FIRST FLOOR



ROOF FLOOR

A flowing, draped piece of vibrant red fabric is set against a dark green background. The fabric has a smooth, slightly glossy texture and is captured in a dynamic, wind-blown pose, creating deep folds and highlights. The overall composition is elegant and sophisticated, serving as a backdrop for the text.

DESIGNS THAT MAKE YOU
FEEL LIKE ROYALTY

INTERIORS FOR 7,6,5
BEDROOM VILLAS

COMES WITH THE FINEST LEVEL OF
DESIGN AND SUPERB FLOW



BRIGHT AND WARM LIVING ROOM



ENDURING VALUE AND TIMELESS SPACES









4 BEDROOM VILLA

MINIMAL DESIGN



YOUR BEST LIFE BEGINS WITH
A HOME THAT INSPIRES YOU





UNWIND IN PEACEFUL SURROUNDINGS WITH
TRANQUIL COURTYARD & PRIVATE SWIMMING POOL

ELEVATE YOUR STYLE WITH OUR EXQUISITELY
DESIGNED AND EFFORTLESSLY FLOWING LIVING SPACE





A modern, open-plan living and dining area. The kitchen is on the left with dark cabinetry and a marble countertop. The dining table is set with white chairs and green upholstered chairs. The living area features a light-colored sectional sofa, a dark coffee table, and a patterned ottoman. Large windows on the right side offer a view of a garden with trees and a pool. The ceiling has recessed lighting and a modern chandelier.

EMBRACE THE BEST IN COMFORT AND EASE
WITH OUR LARGE SPACES



4 BEDROOM VILLA MINIMAL DESIGN

NO. OF BEDROOMS	04
FLOOR CONFIGURATION	G+1+Roof
TOTAL SALEABLE AREA	6,036 sqft
PLOT SIZE	6,394 sqft*

*Starting from



GROUND FLOOR

All materials, dimensions, and drawings are approximate only, including actual areas. / Information is subject to change at developer's discretion, without notice, and developer reserves the right to make revisions without liability. / All images used are for illustrative purposes only and do not represent the actual size, features, specifications, fittings, and furnishings.



FIRST FLOOR



ROOF FLOOR

FEATURES

- ✓ 4 EN SUITE BEDROOMS
- ✓ LIVING AND DINING
- ✓ MAJLIS
- ✓ KITCHEN
- ✓ FAMILY LOUNGE
- ✓ OFFICE/ STUDY LOUNGE (WITH ROOF DECK)
- ✓ DRIVER'S ROOM
- ✓ MAID'S ROOM
- ✓ STORE ROOM



**TWIN VILLAS
AMIDST SERENE VIBES
IN THE HEART OF ABU DHABI**

A 4 BEDROOM TWIN VILLAS
CHIC DESIGN

B 4 BEDROOM TWIN VILLAS
MINIMAL DESIGN

4 BEDROOM TWIN VILLAS

MINIMAL DESIGN





**STEP INTO A VISION OF INDIVIDUALIZED LUXURY AND
SOPHISTICATED LUSH INTERIORS**

4 BEDROOM TWIN VILLAS

CHIC DESIGN





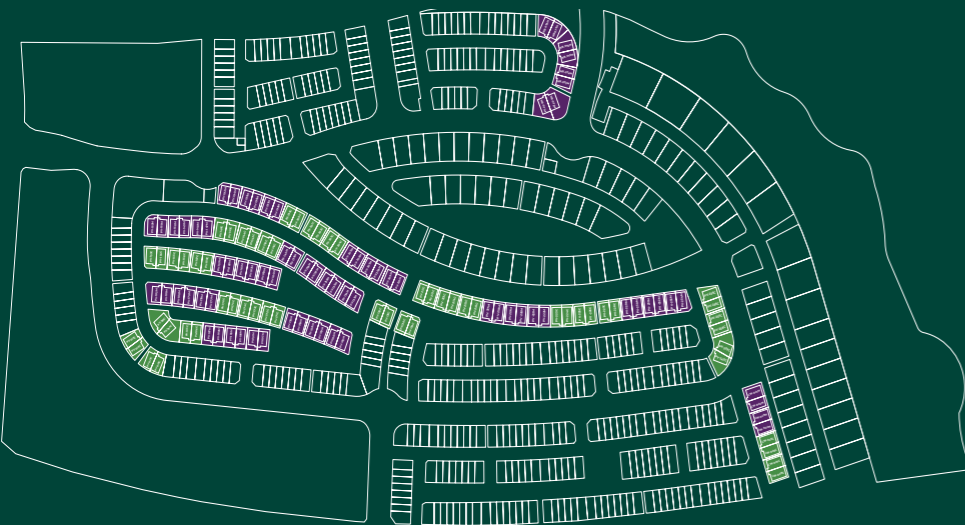
THE EPITOME OF COMFORTABLE LIVING

4 BEDROOM TWIN VILLAS MINIMAL & CHIC DESIGNS

NO. OF BEDROOMS	04 + (OFFICE+FAMILY LOUNGE)
FLOOR CONFIGURATION	G+1+Roof
TOTAL SALEABLE AREA	3,887 sqft
PLOT SIZE	3,251 sqft*

*Starting from

- CHIC DESIGN
- MINIMAL DESIGN



GROUND FLOOR

All materials, dimensions, and drawings are approximate only, including actual areas. / Information is subject to change at developer's discretion, without notice, and developer reserves the right to make revisions without liability. / All images used are for illustrative purposes only and do not represent the actual size, features, specifications, fittings, and furnishings.



FIRST FLOOR



ROOF FLOOR

FEATURES

- ✓ 4 EN-SUITE BEDROOMS
- ✓ FAMILY LOUNGE
- ✓ STUDY ROOM/ OFFICE
- ✓ MAID'S ROOM
- ✓ STORE ROOM
- ✓ ROOF TERRACE
- ✓ LIVING & DINING
- ✓ SEMI CLOSED KITCHEN
- ✓ OUTDOOR GARDEN AREA
- ✓ 3 PARKINGS



**TOWNHOUSES
AMIDST SERENE VIBES
IN THE HEART OF ABU DHABI**

A 3 BEDROOM TOWNHOUSES
MINIMAL DESIGN

B 3 BEDROOM TOWNHOUSES
CHIC DESIGN

3 BEDROOM TOWNHOUSE

MINIMAL DESIGN





3 BEDROOM TOWNHOUSES

CHIC DESIGN





3 BEDROOM TOWNHOUSES

MID-UNIT | TYPE RM

NO. OF BEDROOMS	03 + (FAMILY LOUNGE)
FLOOR CONFIGURATION	G+1
TOTAL SALEABLE AREA	2,377 sqft
PLOT SIZE	2,120 sqft*

*Starting from

 MINIMAL DESIGN

 CHIC DESIGN

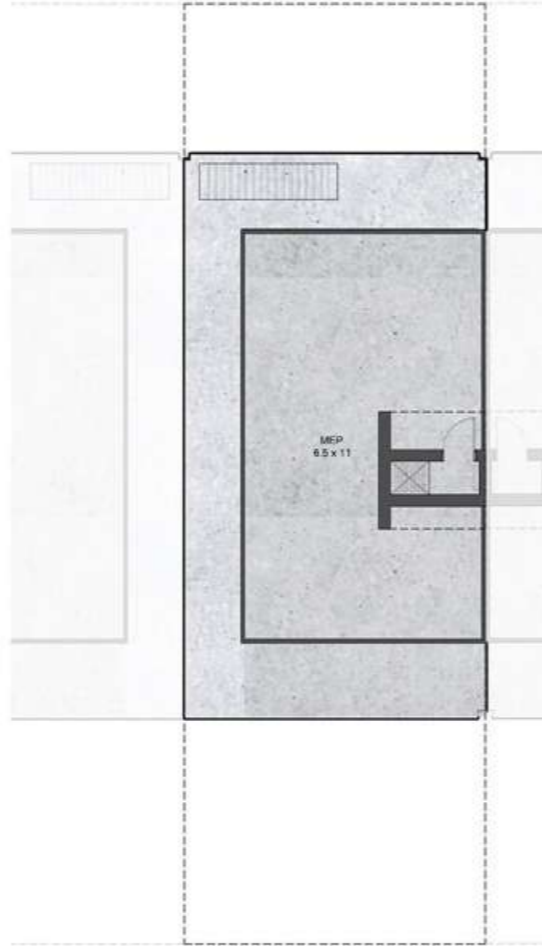


GROUND FLOOR

All materials, dimensions, and drawings are approximate only, including actual areas. / Information is subject to change at developer's discretion, without notice, and developer reserves the right to make revisions without liability. / All images used are for illustrative purposes only and do not represent the actual size, features, specifications, fittings, and furnishings.



FIRST FLOOR



ROOF FLOOR

FEATURES

- ✓ 3 EN-SUITE BEDROOMS
- ✓ FAMILY LOUNGE
- ✓ MAID'S ROOM
- ✓ STORE ROOM
- ✓ LIVING & DINING
- ✓ POWDER ROOM
- ✓ SEMI CLOSED KITCHEN
- ✓ OUTDOOR GARDEN
- ✓ 2 PARKINGS

3 BEDROOM TOWNHOUSES CORNER-UNIT | TYPE RC

NO. OF BEDROOMS	03 + (FAMILY LOUNGE)
FLOOR CONFIGURATION	G+1
TOTAL SALEABLE AREA	2,377 sqft
PLOT SIZE	2,772 sqft*

*Starting from

 MINIMAL DESIGN

 CHIC DESIGN

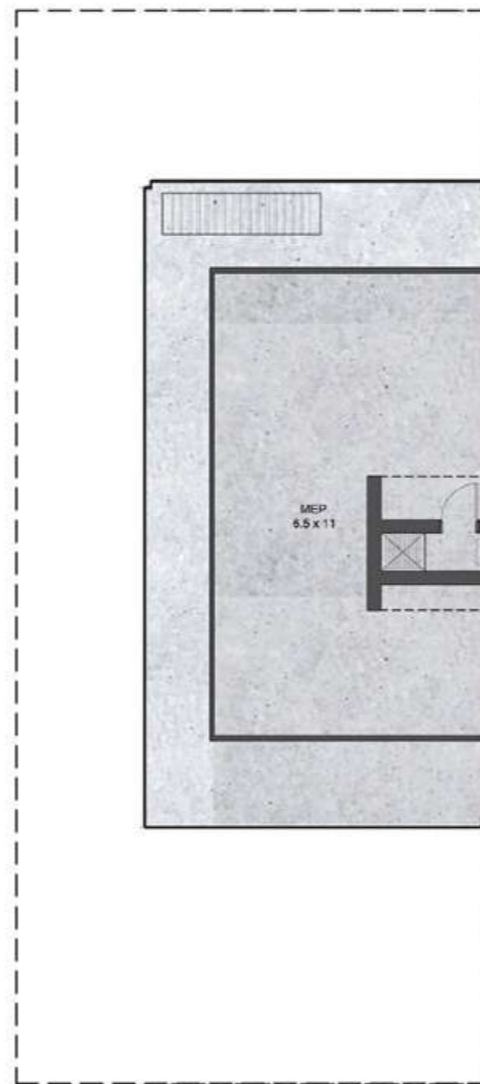


GROUND FLOOR

All materials, dimensions, and drawings are approximate only, including actual areas. / Information is subject to change at developer's discretion, without notice, and developer reserves the right to make revisions without liability. / All images used are for illustrative purposes only and do not represent the actual size, features, specifications, fittings, and furnishings.



FIRST FLOOR



ROOF FLOOR

FEATURES

- ✓ 3 EN-SUITE BEDROOMS
- ✓ FAMILY LOUNGE
- ✓ MAID'S ROOM
- ✓ STORE ROOM
- ✓ LIVING & DINING
- ✓ POWDER ROOM
- ✓ SEMI CLOSED KITCHEN
- ✓ OUTDOOR GARDEN
- ✓ 2 PARKINGS

A flowing, draped red fabric is set against a dark green background. The fabric has a smooth, slightly glossy texture and is captured in a dynamic, wind-blown pose, creating deep folds and highlights. The overall composition is elegant and modern.

DESIGNS THAT INSPIRE YOU

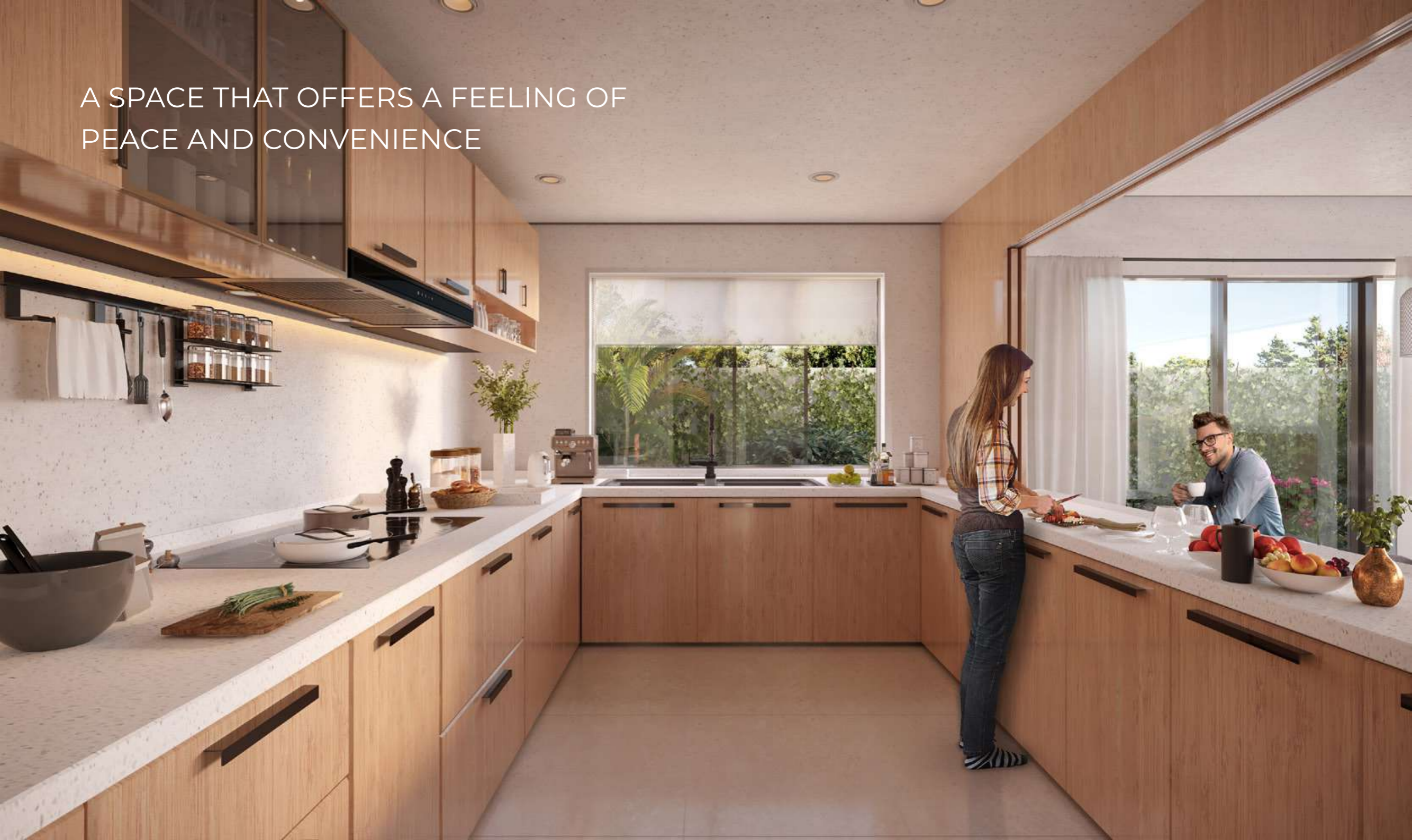
INTERIORS FOR 3 & 4 BEDROOM
TOWNHOUSES AND TWIN VILLAS

IMPRESS YOUR FAMILY AND FRIENDS
WITH SPACIOUSNESS





A SPACE THAT OFFERS A FEELING OF
PEACE AND CONVENIENCE



CREATING SPACES THAT ARE BOTH
BEAUTIFUL AND FUNCTIONAL





An aerial view of a modern residential development. The buildings are multi-story, with white facades and large glass windows. They are surrounded by lush greenery, including palm trees and other tropical plants. In the background, the ocean is visible under a clear blue sky with some light clouds. The overall scene is bright and sunny, suggesting a warm climate.

BE PART OF OUR EXCEPTIONAL COMMUNITY
AND BOOK YOUR DREAM HOME IN THE HEART OF THE CAPITAL