

# Rosehill at Dubai Hills Estate - Apartment

## Rosehill

DUBAI HILLS ESTATE

BLOCK B

### 1 BEDROOM TYPE 3A

UNITS

P09, P10, 111, 112, 113

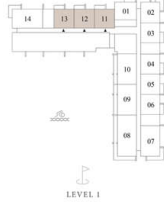
SUITE AREA	668.55 - 670.91 SQ.FT.	62.11 - 62.33 SQ.M.
BALCONY AREA	74.06 - 75.99 SQ.FT.	6.88 - 7.06 SQ.M.
TOTAL AREA	744.54 - 745.40 SQ.FT.	69.17 - 69.25 SQ.M.



KEY SECTION



KEY PLAN



FLOOR PLAN 1. All dimensions are in imperial and metric, and measured from finish to finish excluding construction tolerances. 2. All materials, dimensions, and drawings are approximate only. 3. Information is subject to change without notice, at developer's absolute discretion. 4. Actual area may vary from the stated area. 5. Drawings not to scale. 6. All images used are for illustrative purposes only and do not represent the actual size, features, specifications, fittings, and furnishings. 7. The developer reserves the right to make revisions / alterations, at its absolute discretion, without any liability whatsoever.

EMAAR

# Rosehill

DUBAI HILLS ESTATE

BLOCK B

## 1 BEDROOM TYPE 3A

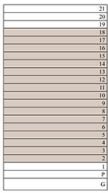
UNITS

215, 216, 217, 315, 316, 317, 415, 416, 417, 515, 516, 517, 615,  
616, 617, 715, 716, 717, 815, 816, 817, 915, 916, 917, 1015, 1016,  
1017, 1115, 1116, 1117, 1215, 1216, 1217, 1315, 1316, 1317, 1415,  
1416, 1417, 1515, 1516, 1517, 1615, 1616, 1617, 1715, 1716, 1717,  
1815, 1816, 1817

SUITE AREA	669.62 - 670.91 SQ.FT.	62.21 - 62.33 SQ.M.
BALCONY AREA	74.06 - 75.24 SQ.FT.	6.88 - 6.99 SQ.M.
TOTAL AREA	744.86 - 745.40 SQ.FT.	69.20 - 69.25 SQ.M.



KEY SECTION



KEY PLAN



FLOOR PLAN 1. All dimensions are in imperial and metric, and measured from finish to finish excluding construction tolerances. 2. All materials, dimensions, and drawings are approximate only. 3. Information is subject to change without notice, at developer's absolute discretion. 4. Actual area may vary from the stated area. 5. Drawings not to scale. 6. All images used are for illustrative purposes only and do not represent the actual size, features, specifications, fittings, and furnishings. 7. The developer reserves the right to make revisions / alterations, at its absolute discretion, without any liability whatsoever.

EMAAR

# Rosehill

DUBAI HILLS ESTATE

BLOCK B

## 1 BEDROOM TYPE 3A

UNITS

P11

SUITE AREA	673.93 SQ.FT.	62.61 SQ.M.
BALCONY AREA	74.59 SQ.FT.	6.93 SQ.M.
TOTAL AREA	748.52 SQ.FT.	69.54 SQ.M.



KEY SECTION



KEY PLAN



FLOOR PLAN 1. All dimensions are in imperial and metric, and measured from finish to finish excluding construction tolerances. 2. All materials, dimensions, and drawings are approximate only. 3. Information is subject to change without notice, at developer's absolute discretion. 4. Actual area may vary from the stated area. 5. Drawings not to scale. 6. All images used are for illustrative purposes only and do not represent the actual size, features, specifications, fittings, and furnishings. 7. The developer reserves the right to make revisions / alterations, at it's absolute discretion, without any liability whatsoever.

EMAAR

# Rosehill

DUBAI HILLS ESTATE

BLOCK B

## 2 BEDROOM TYPE 3A

UNITS

P07

SUITE AREA	1011.92 SQ.FT.	94.01 SQ.M.
BALCONY AREA	178.79 SQ.FT.	16.61 SQ.M.
TOTAL AREA	1190.71 SQ.FT.	110.62 SQ.M.



KEY SECTION



KEY PLAN



FLOOR PLAN 1. All dimensions are in imperial and metric, and measured from finish to finish excluding construction tolerances. 2. All materials, dimensions, and drawings are approximate only. 3. Information is subject to change without notice, at developer's absolute discretion. 4. Actual area may vary from the stated area. 5. Drawings not to scale. 6. All images used are for illustrative purposes only and do not represent the actual size, features, specifications, fittings, and furnishings. 7. The developer reserves the right to make revisions / alterations, at it's absolute discretion, without any liability whatsoever.

EMAAR

# Rosehill

DUBAI HILLS ESTATE

BLOCK B

## 3 BEDROOM TYPE 3A

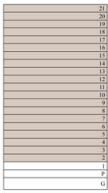
UNITS

208, 308, 408, 508, 608, 708, 808, 908, 1008, 1108, 1208, 1308, 1408,  
1508, 1608, 1708, 1808, 1908, 2008, 2108

SUITE AREA	1354.75 SQ.FT.	125.86 SQ.M.
BALCONY AREA	301.71 SQ.FT.	28.03 SQ.M.
TOTAL AREA	1656.46 SQ.FT.	153.89 SQ.M.



KEY SECTION



KEY PLAN



FLOOR PLAN 1. All dimensions are in imperial and metric, and measured from finish to finish excluding construction tolerances. 2. All materials, dimensions, and drawings are approximate only. 3. Information is subject to change without notice, at developer's absolute discretion. 4. Actual area may vary from the stated area. 5. Drawings not to scale. 6. All images used are for illustrative purposes only and do not represent the actual size, features, specifications, fittings, and furnishings. 7. The developer reserves the right to make revisions / alterations, at it's absolute discretion, without any liability whatsoever.

EMAAR

# Rosehill

DUBAI HILLS ESTATE

BLOCK B

## 2 BEDROOM TYPE 3A

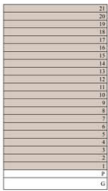
UNITS

107, 207, 307, 407, 507, 607, 707, 807, 907, 1007, 1107, 1207, 1307,  
1407, 1507, 1607, 1707, 1807, 1907, 2007, 2107

SUITE AREA	1016.76 SQ.FT.	94.46 SQ.M.
BALCONY AREA	178.25 SQ.FT.	16.56 SQ.M.
TOTAL AREA	1195.01 SQ.FT.	111.02 SQ.M.



KEY SECTION



KEY PLAN



FLOOR PLAN 1. All dimensions are in imperial and metric, and measured from finish to finish excluding construction tolerances. 2. All materials, dimensions, and drawings are approximate only. 3. Information is subject to change without notice, at developer's absolute discretion. 4. Actual area may vary from the stated area. 5. Drawings not to scale. 6. All images used are for illustrative purposes only and do not represent the actual size, features, specifications, fittings, and furnishings. 7. The developer reserves the right to make revisions / alterations, at it's absolute discretion, without any liability whatsoever.

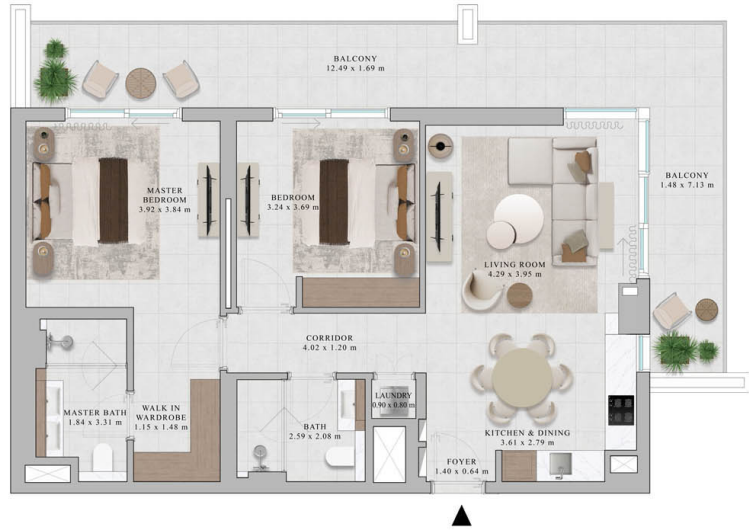
EMAAR

# Rosehill

DUBAI HILLS ESTATE  
BLOCK B

2 BEDROOM  
TYPE 3B  
UNITS  
G07

SUITE AREA	1010.30 SQ.FT.	93.86 SQ.M.
BALCONY AREA	354.56 SQ.FT.	32.94 SQ.M.
TOTAL AREA	1364.86 SQ.FT.	126.80 SQ.M.



KEY SECTION



KEY PLAN



FLOOR PLAN 1. All dimensions are in imperial and metric, and measured from finish to finish excluding construction tolerances. 2. All materials, dimensions, and drawings are approximate only. 3. Information is subject to change without notice, at developer's absolute discretion. 4. Actual area may vary from the stated area. 5. Drawings not to scale. 6. All images used are for illustrative purposes only and do not represent the actual size, features, specifications, fittings, and furnishings. 7. The developer reserves the right to make revisions / alterations, at it's absolute discretion, without any liability whatsoever.

EMAAR

# Rosehill

DUBAI HILLS ESTATE

BLOCK B

## 1 BEDROOM TYPE 3B

UNITS

103

SUITE AREA	674.04 SQ.FT.	62.62 SQ.M.
BALCONY AREA	75.67 SQ.FT.	7.03 SQ.M.
TOTAL AREA	749.71 SQ.FT.	69.65 SQ.M.



KEY SECTION



KEY PLAN



FLOOR PLAN 1. All dimensions are in imperial and metric, and measured from finish to finish excluding construction tolerances. 2. All materials, dimensions, and drawings are approximate only. 3. Information is subject to change without notice, at developer's absolute discretion. 4. Actual area may vary from the stated area. 5. Drawings not to scale. 6. All images used are for illustrative purposes only and do not represent the actual size, features, specifications, fittings, and furnishings. 7. The developer reserves the right to make revisions / alterations, at it's absolute discretion, without any liability whatsoever.

# Rosehill

DUBAI HILLS ESTATE

BLOCK B

## 1 BEDROOM TYPE 3B

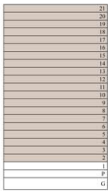
UNITS

203, 205, 303, 305, 403, 405, 503, 505, 603, 605, 703, 705, 803, 805,  
903, 905, 1003, 1005, 1103, 1105, 1203, 1205, 1303, 1305, 1403, 1405,  
1503, 1505, 1603, 1605, 1703, 1705, 1803, 1805, 1903, 1905, 2003,  
2005, 2103, 2105

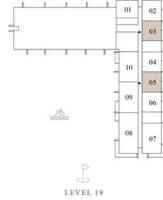
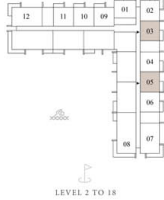
SUITE AREA	670.91 - 674.04 SQ.FT.	62.33 - 62.62 SQ.M.
BALCONY AREA	74.38 - 75.67 SQ.FT.	6.91 - 7.03 SQ.M.
TOTAL AREA	745.29 - 749.71 SQ.FT.	69.24 - 69.65 SQ.M.



KEY SECTION



KEY PLAN



FLOOR PLAN 1. All dimensions are in imperial and metric, and measured from finish to finish excluding construction tolerances. 2. All materials, dimensions, and drawings are approximate only. 3. Information is subject to change without notice, at developer's absolute discretion. 4. Actual area may vary from the stated area. 5. Drawings not to scale. 6. All images used are for illustrative purposes only and do not represent the actual size, features, specifications, fittings, and furnishings. 7. The developer reserves the right to make revisions / alterations, at it's absolute discretion, without any liability whatsoever.

# Rosehill

DUBAI HILLS ESTATE  
BLOCK B

3 BEDROOM  
TYPE 3B  
UNITS  
108

SUITE AREA	1355.28 SQ.FT.	125.91 SQ.M.
BALCONY AREA	443.47 SQ.FT.	41.20 SQ.M.
TOTAL AREA	1798.75 SQ.FT.	167.11 SQ.M.



KEY SECTION



KEY PLAN



FLOOR PLAN 1. All dimensions are in imperial and metric, and measured from finish to finish excluding construction tolerances. 2. All materials, dimensions, and drawings are approximate only. 3. Information is subject to change without notice, at developer's absolute discretion. 4. Actual area may vary from the stated area. 5. Drawings not to scale. 6. All images used are for illustrative purposes only and do not represent the actual size, features, specifications, fittings, and furnishings. 7. The developer reserves the right to make revisions / alterations, at it's absolute discretion, without any liability whatsoever.

# Rosehill

DUBAI HILLS ESTATE

BLOCK B

## 1 BEDROOM TYPE 3B

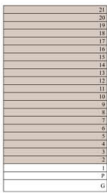
UNITS

204, 206 304, 306, 404, 406, 504, 506, 604, 606, 704, 706, 804, 806,  
904, 906, 1004, 1006, 1104, 1106, 1204, 1206, 1304, 1306, 1404, 1406,  
1504, 1506, 1604, 1606, 1704, 1706, 1804, 1806, 1904, 1906, 2004,  
2006, 2104, 2106

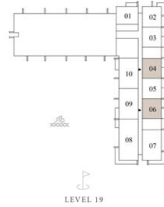
SUITE AREA	666.39 - 666.72 SQ.FT.	61.91 - 61.94 SQ.M.
BALCONY AREA	74.49 SQ.FT.	6.92 SQ.M.
TOTAL AREA	740.88 - 741.21 SQ.FT.	68.83 - 68.86 SQ.M.



KEY SECTION



KEY PLAN



FLOOR PLAN 1. All dimensions are in imperial and metric, and measured from finish to finish excluding construction tolerances. 2. All materials, dimensions, and drawings are approximate only. 3. Information is subject to change without notice, at developer's absolute discretion. 4. Actual area may vary from the stated area. 5. Drawings not to scale. 6. All images used are for illustrative purposes only and do not represent the actual size, features, specifications, fittings, and furnishings. 7. The developer reserves the right to make revisions / alterations, at its absolute discretion, without any liability whatsoever.

EMAAR

# Rosehill

DUBAI HILLS ESTATE

BLOCK B

## 1 BEDROOM TYPE 3B

UNITS

P03, P04, P05, P06, 104, 105, 106

SUITE AREA	666.39 - 670.91 SQ.FT.	61.91 - 62.33 SQ.M.
BALCONY AREA	74.38 - 76.10 SQ.FT.	6.91 - 7.07 SQ.M.
TOTAL AREA	740.88 - 745.94 SQ.FT.	68.83 - 69.30 SQ.M.



KEY SECTION



KEY PLAN



FLOOR PLAN 1. All dimensions are in imperial and metric, and measured from finish to finish excluding construction tolerances. 2. All materials, dimensions, and drawings are approximate only. 3. Information is subject to change without notice, at developer's absolute discretion. 4. Actual area may vary from the stated area. 5. Drawings not to scale. 6. All images used are for illustrative purposes only and do not represent the actual size, features, specifications, fittings, and furnishings. 7. The developer reserves the right to make revisions / alterations, at it's absolute discretion, without any liability whatsoever.

EMAAR

# Rosehill

DUBAI HILLS ESTATE

BLOCK B

## 1 BEDROOM TYPE 3D

UNITS  
G04

SUITE AREA	669.19 SQ.FT.	62.17 SQ.M.
BALCONY AREA	151.13 SQ.FT.	14.04 SQ.M.
TOTAL AREA	820.32 SQ.FT.	76.21 SQ.M.



KEY SECTION



KEY PLAN



FLOOR PLAN 1. All dimensions are in imperial and metric, and measured from finish to finish excluding construction tolerances. 2. All materials, dimensions, and drawings are approximate only. 3. Information is subject to change without notice, at developer's absolute discretion. 4. Actual area may vary from the stated area. 5. Drawings not to scale. 6. All images used are for illustrative purposes only and do not represent the actual size, features, specifications, fittings, and furnishings. 7. The developer reserves the right to make revisions / alterations, at it's absolute discretion, without any liability whatsoever.

EMAAR

# Rosehill

DUBAI HILLS ESTATE

BLOCK B

## 1 BEDROOM TYPE 3C

UNITS  
G06

SUITE AREA	669.19 SQ.FT.	62.17 SQ.M.
BALCONY AREA	152.31 SQ.FT.	14.15 SQ.M.
TOTAL AREA	821.50 SQ.FT.	76.32 SQ.M.



KEY SECTION



KEY PLAN



FLOOR PLAN 1. All dimensions are in imperial and metric, and measured from finish to finish excluding construction tolerances. 2. All materials, dimensions, and drawings are approximate only. 3. Information is subject to change without notice, at developer's absolute discretion. 4. Actual area may vary from the stated area. 5. Drawings not to scale. 6. All images used are for illustrative purposes only and do not represent the actual size, features, specifications, fittings, and furnishings. 7. The developer reserves the right to make revisions / alterations, at it's absolute discretion, without any liability whatsoever.

EMAAR

# Rosehill

DUBAI HILLS ESTATE

BLOCK B

## 1 BEDROOM TYPE 3C

UNITS  
G03

SUITE AREA	669.19 SQ.FT.	62.17 SQ.M.
BALCONY AREA	152.09 SQ.FT.	14.13 SQ.M.
TOTAL AREA	821.28 SQ.FT.	76.30 SQ.M.



KEY SECTION



KEY PLAN



FLOOR PLAN 1. All dimensions are in imperial and metric, and measured from finish to finish excluding construction tolerances. 2. All materials, dimensions, and drawings are approximate only. 3. Information is subject to change without notice, at developer's absolute discretion. 4. Actual area may vary from the stated area. 5. Drawings not to scale. 6. All images used are for illustrative purposes only and do not represent the actual size, features, specifications, fittings, and furnishings. 7. The developer reserves the right to make revisions / alterations, at it's absolute discretion, without any liability whatsoever.

EMAAR

# Rosehill

DUBAI HILLS ESTATE

BLOCK B

## 1 BEDROOM TYPE 4A

UNITS

P01, 101, 201, 301, 401, 501, 601, 701, 801, 901, 1001, 1101, 1201,  
1301, 1401, 1501, 1601, 1701, 1801, 1901, 2001, 2101

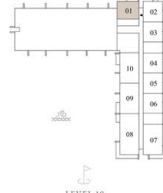
SUITE AREA	672.31 - 672.96 SQ.FT.	62.46 - 62.52 SQ.M.
BALCONY AREA	80.84 - 81.38 SQ.FT.	7.51 - 7.56 SQ.M.
TOTAL AREA	753.69 - 753.80 SQ.FT.	70.02 - 70.03 SQ.M.



KEY SECTION



KEY PLAN



FLOOR PLAN 1. All dimensions are in imperial and metric, and measured from finish to finish excluding construction tolerances. 2. All materials, dimensions, and drawings are approximate only. 3. Information is subject to change without notice, at developer's absolute discretion. 4. Actual area may vary from the stated area. 5. Drawings not to scale. 6. All images used are for illustrative purposes only and do not represent the actual size, features, specifications, fittings, and furnishings. 7. The developer reserves the right to make revisions / alterations, at it's absolute discretion, without any liability whatsoever.

EMAAR

# Rosehill

DUBAI HILLS ESTATE

BLOCK B

## 2 BEDROOM TYPE 4A

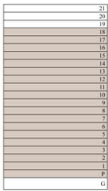
UNITS

P12, 114, 214, 314, 414, 514, 614, 714, 814, 914, 1014, 1114, 1214,  
1314, 1414, 1514, 1614, 1714, 1814

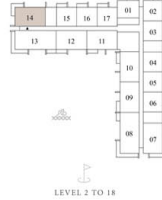
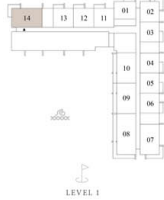
SUITE AREA	1011.59 - 1015.90 SQ.FT.	93.98 - 94.38 SQ.M.
BALCONY AREA	145.53 - 146.50 SQ.FT.	13.52 - 13.61 SQ.M.
TOTAL AREA	1158.09 - 1161.54 SQ.FT.	107.59 - 107.91 SQ.M.



KEY SECTION



KEY PLAN



FLOOR PLAN 1. All dimensions are in imperial and metric, and measured from finish to finish excluding construction tolerances. 2. All materials, dimensions, and drawings are approximate only. 3. Information is subject to change without notice, at developer's absolute discretion. 4. Actual area may vary from the stated area. 5. Drawings not to scale. 6. All images used are for illustrative purposes only and do not represent the actual size, features, specifications, fittings, and furnishings. 7. The developer reserves the right to make revisions / alterations, at it's absolute discretion, without any liability whatsoever.

# Rosehill

DUBAI HILLS ESTATE

BLOCK B

## 3 BEDROOM TYPE 4A

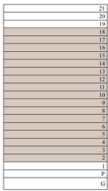
UNITS

213, 313, 413, 513, 613, 713, 813, 913, 1013, 1113, 1213, 1313, 1413,  
1513, 1613, 1713, 1813

SUITE AREA	1351.95 SQ.FT.	125.60 SQ.M.
BALCONY AREA	317.97 SQ.FT.	29.54 SQ.M.
TOTAL AREA	1669.92 SQ.FT.	155.14 SQ.M.



KEY SECTION



KEY PLAN



FLOOR PLAN 1. All dimensions are in imperial and metric, and measured from finish to finish excluding construction tolerances. 2. All materials, dimensions, and drawings are approximate only. 3. Information is subject to change without notice, at developer's absolute discretion. 4. Actual area may vary from the stated area. 5. Drawings not to scale. 6. All images used are for illustrative purposes only and do not represent the actual size, features, specifications, fittings, and furnishings. 7. The developer reserves the right to make revisions / alterations, at it's absolute discretion, without any liability whatsoever.

EMAAR

# Rosehill

DUBAI HILLS ESTATE

BLOCK B

## 1 BEDROOM TYPE 4B

UNITS  
G01

SUITE AREA	671.67 SQ.FT.	62.40 SQ.M.
BALCONY AREA	132.50 SQ.FT.	12.31 SQ.M.
TOTAL AREA	804.17 SQ.FT.	74.71 SQ.M.



KEY SECTION



KEY PLAN



FLOOR PLAN 1. All dimensions are in imperial and metric, and measured from finish to finish excluding construction tolerances. 2. All materials, dimensions, and drawings are approximate only. 3. Information is subject to change without notice, at developer's absolute discretion. 4. Actual area may vary from the stated area. 5. Drawings not to scale. 6. All images used are for illustrative purposes only and do not represent the actual size, features, specifications, fittings, and furnishings. 7. The developer reserves the right to make revisions / alterations, at it's absolute discretion, without any liability whatsoever.

EMAAR

# Rosehill

DUBAI HILLS ESTATE

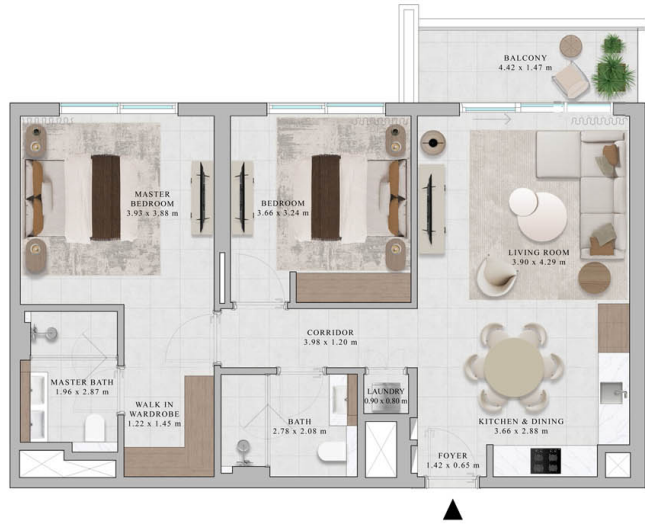
BLOCK B

## 2 BEDROOM TYPE 5A

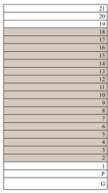
UNITS

211, 311, 411, 511, 611, 711, 811, 911, 1011, 1111, 1211, 1311, 1411,  
1511, 1611, 1711, 1811

SUITE AREA	1009.12 SQ.FT.	93.75 SQ.M.
BALCONY AREA	74.59 SQ.FT.	6.93 SQ.M.
TOTAL AREA	1083.71 SQ.FT.	100.68 SQ.M.



KEY SECTION



KEY PLAN



FLOOR PLAN 1. All dimensions are in imperial and metric, and measured from finish to finish excluding construction tolerances. 2. All materials, dimensions, and drawings are approximate only. 3. Information is subject to change without notice, at developer's absolute discretion. 4. Actual area may vary from the stated area. 5. Drawings not to scale. 6. All images used are for illustrative purposes only and do not represent the actual size, features, specifications, fittings, and furnishings. 7. The developer reserves the right to make revisions / alterations, at it's absolute discretion, without any liability whatsoever.

EMAAR

# Rosehill

DUBAI HILLS ESTATE

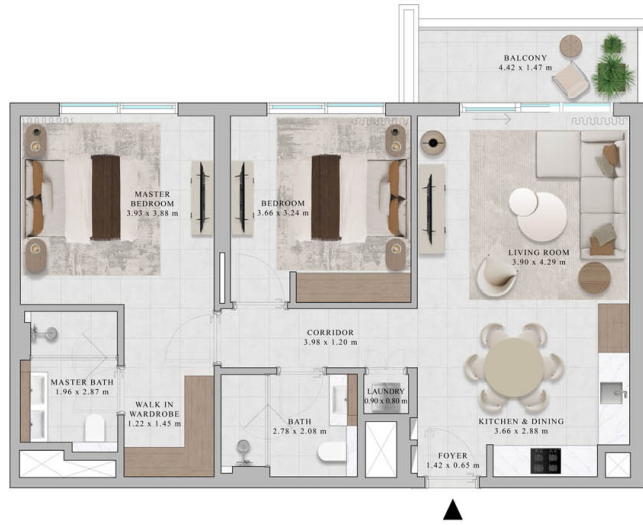
BLOCK B

## 2 BEDROOM TYPE 5A

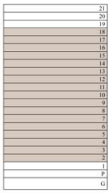
UNITS

212, 312, 412, 512, 612, 712, 812, 912, 1012, 1112, 1212, 1312, 1412,  
1512, 1612, 1712, 1812

SUITE AREA	1004.81 SQ.FT.	93.35 SQ.M.
BALCONY AREA	77.18 - 77.82 SQ.FT.	7.17 - 7.23 SQ.M.
TOTAL AREA	1081.99 - 1082.63 SQ.FT.	100.52 - 100.58 SQ.M.



KEY SECTION



KEY PLAN



FLOOR PLAN 1. All dimensions are in imperial and metric, and measured from finish to finish excluding construction tolerances. 2. All materials, dimensions, and drawings are approximate only. 3. Information is subject to change without notice, at developer's absolute discretion. 4. Actual area may vary from the stated area. 5. Drawings not to scale. 6. All images used are for illustrative purposes only and do not represent the actual size, features, specifications, fittings, and furnishings. 7. The developer reserves the right to make revisions / alterations, at it's absolute discretion, without any liability whatsoever.

EMAAR

# Rosehill

DUBAI HILLS ESTATE  
BLOCK B

## 1 BEDROOM TYPE 5A

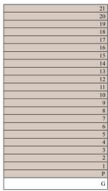
UNITS

P02, 102, 202, 302, 402, 502, 602, 702, 802, 902, 1002, 1102, 1202,  
1302, 1402, 1502, 1602, 1702, 1802, 1902, 2002, 2102

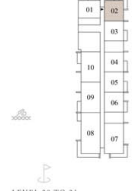
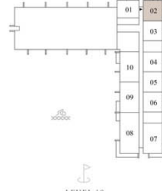
SUITE AREA	669.62 - 670.91 SQ.FT.	62.21 - 62.33 SQ.M.
BALCONY AREA	116.90 - 117.43 SQ.FT.	10.86 - 10.91 SQ.M.
TOTAL AREA	786.62 - 787.91 SQ.FT.	73.08 - 73.20 SQ.M.



KEY SECTION



KEY PLAN



FLOOR PLAN 1. All dimensions are in imperial and metric, and measured from finish to finish excluding construction tolerances. 2. All materials, dimensions, and drawings are approximate only. 3. Information is subject to change without notice, at developer's absolute discretion. 4. Actual area may vary from the stated area. 5. Drawings not to scale. 6. All images used are for illustrative purposes only and do not represent the actual size, features, specifications, fittings, and furnishings. 7. The developer reserves the right to make revisions / alterations, at it's absolute discretion, without any liability whatsoever.

EMAAR

# Rosehill

DUBAI HILLS ESTATE

BLOCK B

## 1 BEDROOM TYPE 5B

UNITS  
G02

SUITE AREA	668.01 SQ.FT.	62.06 SQ.M.
BALCONY AREA	140.47 SQ.FT.	13.05 SQ.M.
TOTAL AREA	808.48 SQ.FT.	75.11 SQ.M.



KEY SECTION



KEY PLAN



FLOOR PLAN 1. All dimensions are in imperial and metric, and measured from finish to finish excluding construction tolerances. 2. All materials, dimensions, and drawings are approximate only. 3. Information is subject to change without notice, at developer's absolute discretion. 4. Actual area may vary from the stated area. 5. Drawings not to scale. 6. All images used are for illustrative purposes only and do not represent the actual size, features, specifications, fittings, and furnishings. 7. The developer reserves the right to make revisions / alterations, at it's absolute discretion, without any liability whatsoever.

EMAAR

# Rosehill

DUBAI HILLS ESTATE

BLOCK B

## 2 BEDROOM TYPE 5B

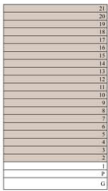
UNITS

209, 309, 409, 509, 609, 709, 809, 909, 1009, 1109, 1209, 1309, 1409,  
1509, 1609, 1709, 1809, 1909, 2009, 2109

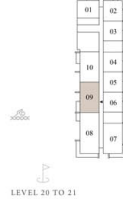
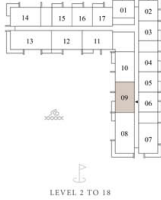
SUITE AREA	1004.38 - 1004.81 SQ.FT.	93.31 - 93.35 SQ.M.
BALCONY AREA	76.64 - 77.82 SQ.FT.	7.12 - 7.23 SQ.M.
TOTAL AREA	1081.02 - 1082.63 SQ.FT.	100.43 - 100.58 SQ.M.



### KEY SECTION



### KEY PLAN



FLOOR PLAN 1. All dimensions are in imperial and metric, and measured from finish to finish excluding construction tolerances. 2. All materials, dimensions, and drawings are approximate only. 3. Information is subject to change without notice, at developer's absolute discretion. 4. Actual area may vary from the stated area. 5. Drawings not to scale. 6. All images used are for illustrative purposes only and do not represent the actual size, features, specifications, fittings, and furnishings. 7. The developer reserves the right to make revisions / alterations, at it's absolute discretion, without any liability whatsoever.

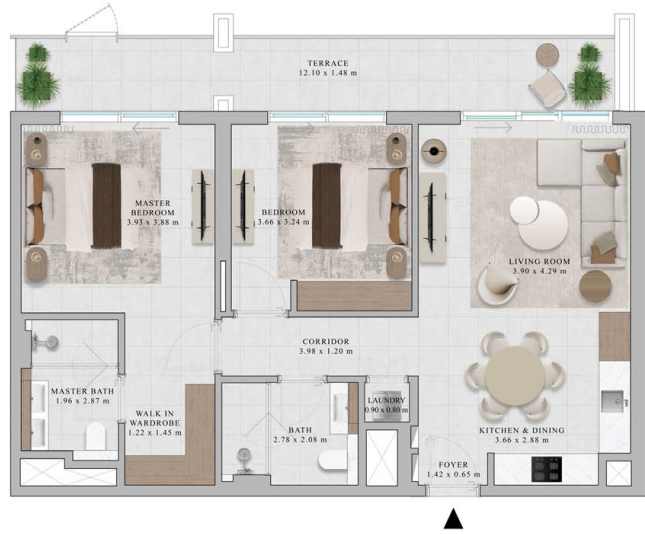
EMAAR

# Rosehill

DUBAI HILLS ESTATE  
BLOCK B

2 BEDROOM  
TYPE 5C  
UNITS  
110

SUITE AREA	1004.81 SQ.FT.	93.35 SQ.M.
BALCONY AREA	209.90 SQ.FT.	19.5 SQ.M.
TOTAL AREA	1214.71 SQ.FT.	112.85 SQ.M.



KEY SECTION



KEY PLAN



FLOOR PLAN 1. All dimensions are in imperial and metric, and measured from finish to finish excluding construction tolerances. 2. All materials, dimensions, and drawings are approximate only. 3. Information is subject to change without notice, at developer's absolute discretion. 4. Actual area may vary from the stated area. 5. Drawings not to scale. 6. All images used are for illustrative purposes only and do not represent the actual size, features, specifications, fittings, and furnishings. 7. The developer reserves the right to make revisions / alterations, at it's absolute discretion, without any liability whatsoever.

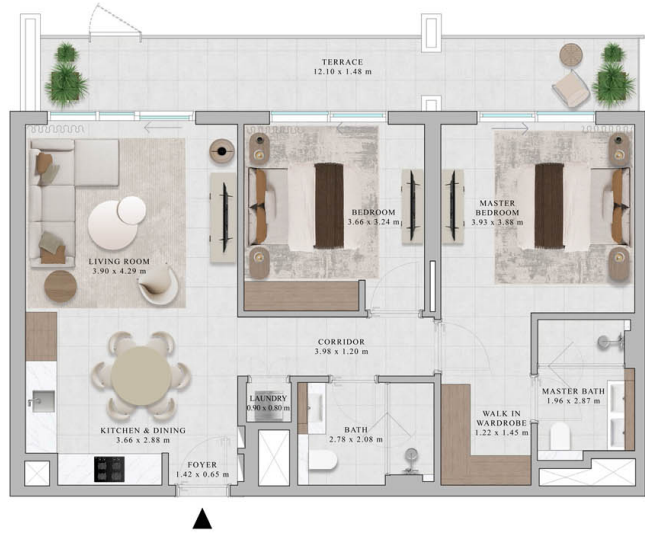
EMAAR

# Rosehill

DUBAI HILLS ESTATE  
BLOCK B

2 BEDROOM  
TYPE 5D  
UNITS  
109

SUITE AREA	1004.49 SQ.FT.	93.32 SQ.M.
BALCONY AREA	214.96 SQ.FT.	19.97 SQ.M.
TOTAL AREA	1219.45 SQ.FT.	113.29 SQ.M.



KEY SECTION



KEY PLAN



FLOOR PLAN 1. All dimensions are in imperial and metric, and measured from finish to finish excluding construction tolerances. 2. All materials, dimensions, and drawings are approximate only. 3. Information is subject to change without notice, at developer's absolute discretion. 4. Actual area may vary from the stated area. 5. Drawings not to scale. 6. All images used are for illustrative purposes only and do not represent the actual size, features, specifications, fittings, and furnishings. 7. The developer reserves the right to make revisions / alterations, at it's absolute discretion, without any liability whatsoever.

EMAAR

# Rosehill

DUBAI HILLS ESTATE

BLOCK B

## 1 BEDROOM TYPE 6A

UNITS  
G08, P08

SUITE AREA	599.87 - 599.98 SQ.FT.	55.73 - 55.74 SQ.M.
BALCONY AREA	241.97 - 244.34 SQ.FT.	22.48 - 22.70 SQ.M.
TOTAL AREA	841.84 - 844.32 SQ.FT.	78.21 - 78.44 SQ.M.



KEY SECTION



KEY PLAN



FLOOR PLAN 1. All dimensions are in imperial and metric, and measured from finish to finish excluding construction tolerances. 2. All materials, dimensions, and drawings are approximate only. 3. Information is subject to change without notice, at developer's absolute discretion. 4. Actual area may vary from the stated area. 5. Drawings not to scale. 6. All images used are for illustrative purposes only and do not represent the actual size, features, specifications, fittings, and furnishings. 7. The developer reserves the right to make revisions / alterations, at its absolute discretion, without any liability whatsoever.

EMAAR

# Rosehill

DUBAI HILLS ESTATE

BLOCK B

## 2 BEDROOM TYPE 5B

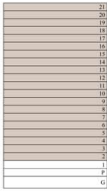
UNITS

210, 310, 410, 510, 610, 710, 810, 910, 1010, 1110, 1210, 1310, 1410,  
1510, 1610, 1710, 1810, 1910, 2010, 2110

SUITE AREA	1004.38 - 1004.81 SQ.FT.	93.31 - 93.35 SQ.M.
BALCONY AREA	76.64 - 77.82 SQ.FT.	7.12 - 7.23 SQ.M.
TOTAL AREA	1081.02 - 1082.63 SQ.FT.	100.43 - 100.58 SQ.M.



KEY SECTION



KEY PLAN



FLOOR PLAN 1. All dimensions are in imperial and metric, and measured from finish to finish excluding construction tolerances. 2. All materials, dimensions, and drawings are approximate only. 3. Information is subject to change without notice, at developer's absolute discretion. 4. Actual area may vary from the stated area. 5. Drawings not to scale. 6. All images used are for illustrative purposes only and do not represent the actual size, features, specifications, fittings, and furnishings. 7. The developer reserves the right to make revisions / alterations, at it's absolute discretion, without any liability whatsoever.

EMAAR

# CONTACT US



Call Us [+971 4 248 3400](tel:+97142483400)



WhatsApp [+971 55 162 3236](https://wa.me/971551623236)

**TANAMI**  
PROPERTIES