

Seamont Autograph Collection Residences Phase 2 - Apartment

11TH & 12TH FLOOR PLAN



DESCRIPTION

1BR · TYPE 1	2BR · TYPE 1	2BR · TYPE 7	3BR · TYPE 4
1BR · TYPE 2	2BR · TYPE 1A	2BR · TYPE 10	3BR · TYPE 5
	2BR · TYPE 2	2BR · TYPE 13	3BR · TYPE 7
	2BR · TYPE 3	2BR · TYPE 15	
	2BR · TYPE 4	2BR · TYPE 16	



Floor layouts must only be referred for locating the unit type on a floor. Balcony profiles may differ slightly during subsequent design development stages.

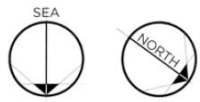
TH: Duplex Townhouse PH: Duplex Penthouse 1BR: One Bedroom 2BR: Two Bedroom 3BR: Three Bedroom

13TH TO 20TH FLOOR PLAN



DESCRIPTION

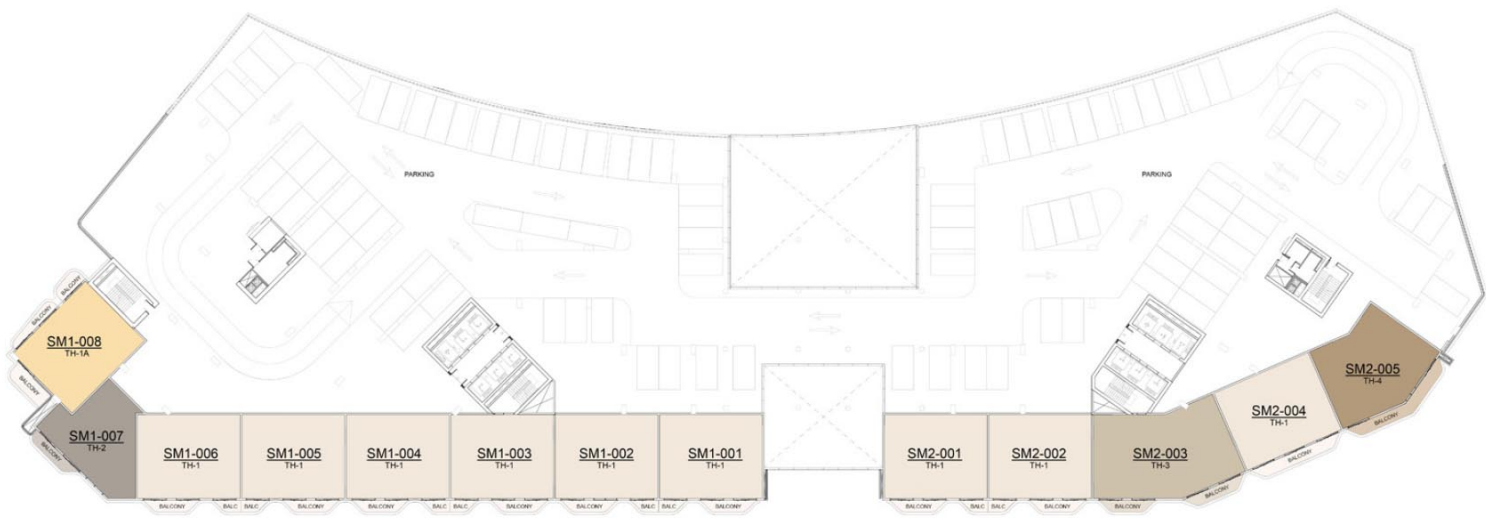
1BR - TYPE 1	2BR - TYPE 1	2BR - TYPE 10	2BR - TYPE 16	3BR - TYPE 5
1BR - TYPE 3	2BR - TYPE 2	2BR - TYPE 11		3BR - TYPE 7
	2BR - TYPE 3	2BR - TYPE 12		
	2BR - TYPE 4	2BR - TYPE 13		
	2BR - TYPE 7	2BR - TYPE 15		



Floor layouts must only be referred for locating the unit type on a floor. Balcony profiles may differ slightly during subsequent design development stages.

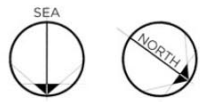
TH: Duplex Townhouse PH: Duplex Penthouse 1BR: One Bedroom 2BR: Two Bedroom 3BR: Three Bedroom

1ST PODIUM FLOOR PLAN



DESCRIPTION

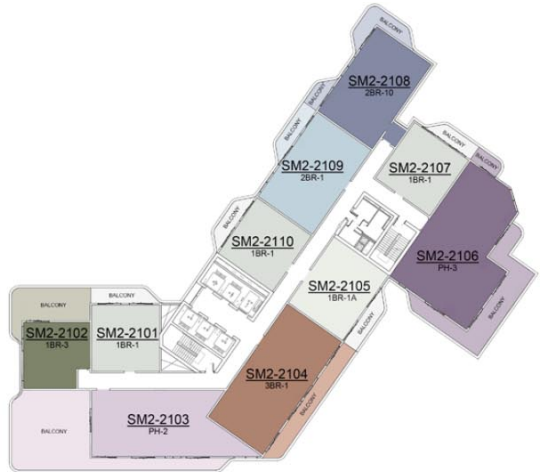
- TH - TYPE 1
- TH - TYPE 1A
- TH - TYPE 2
- TH - TYPE 3
- TH - TYPE 4



Floor layouts must only be referred for locating the unit type on a floor. Balcony profiles may differ slightly during subsequent design development stages.

TH: Duplex Townhouse PH: Duplex Penthouse 1BR: One Bedroom 2BR: Two Bedroom 3BR: Three Bedroom

21ST & 22ND FLOOR PLAN



DESCRIPTION

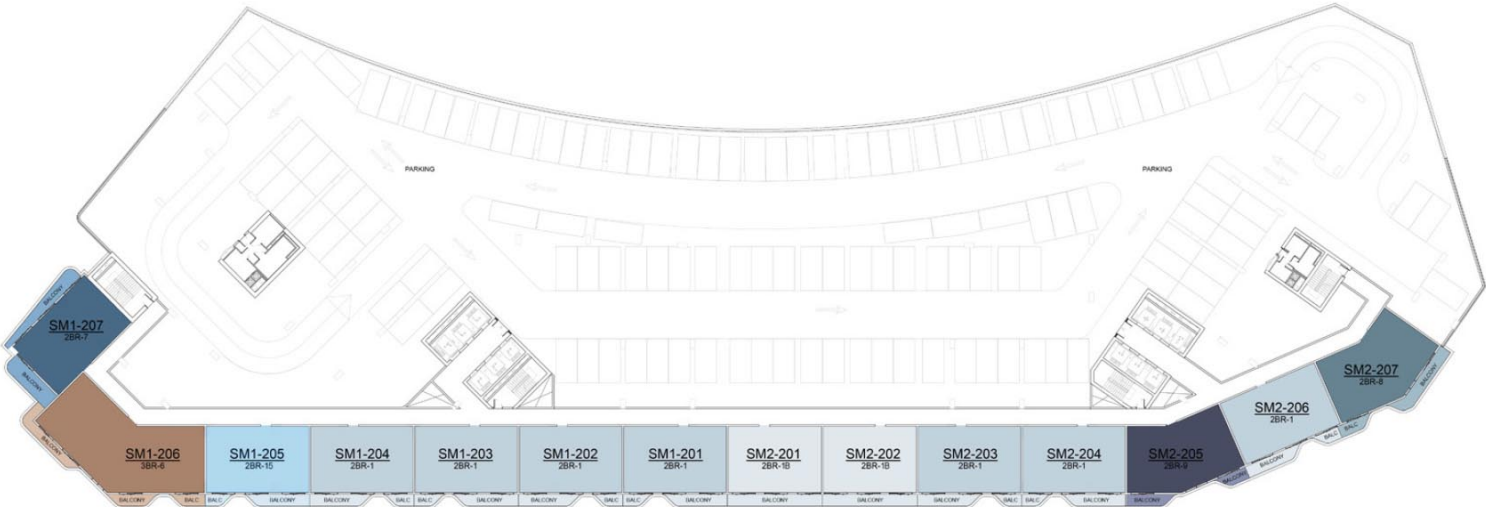
1BR - TYPE 1	2BR - TYPE 1	2BR - TYPE 15	3BR - TYPE 1	PH - TYPE 1
1BR - TYPE 1A	2BR - TYPE 4		3BR - TYPE 9	PH - TYPE 2
1BR - TYPE 3	2BR - TYPE 10			PH - TYPE 3
	2BR - TYPE 11			



Floor layouts must only be referred for locating the unit type on a floor. Balcony profiles may differ slightly during subsequent design development stages.

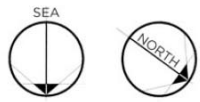
TH: Duplex Townhouse PH: Duplex Penthouse 1BR: One Bedroom 2BR: Two Bedroom 3BR: Three Bedroom

2ND PODIUM FLOOR PLAN



DESCRIPTION

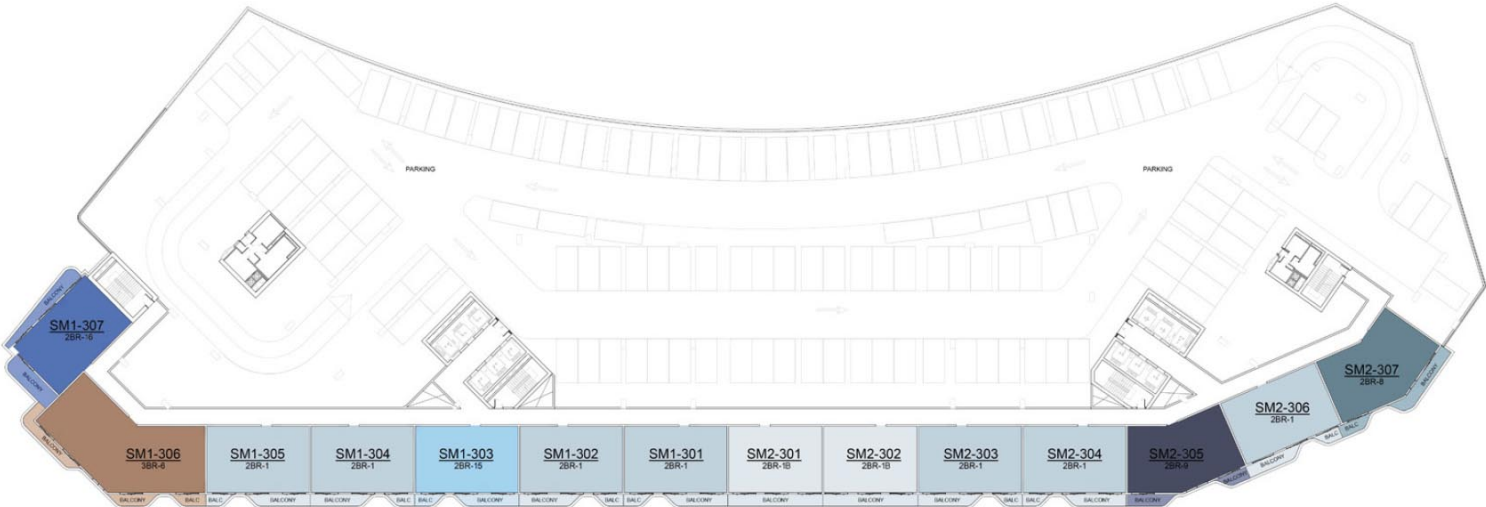
- 2BR - TYPE 1
- 2BR - TYPE 1B
- 2BR - TYPE 7
- 2BR - TYPE 8
- 2BR - TYPE 9
- 2BR - TYPE 15
- 3BR - TYPE 6



Floor layouts must only be referred for locating the unit type on a floor. Balcony profiles may differ slightly during subsequent design development stages.

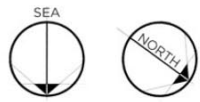
TH: Duplex Townhouse PH: Duplex Penthouse 1BR: One Bedroom 2BR: Two Bedroom 3BR: Three Bedroom

3RD PODIUM FLOOR PLAN



DESCRIPTION

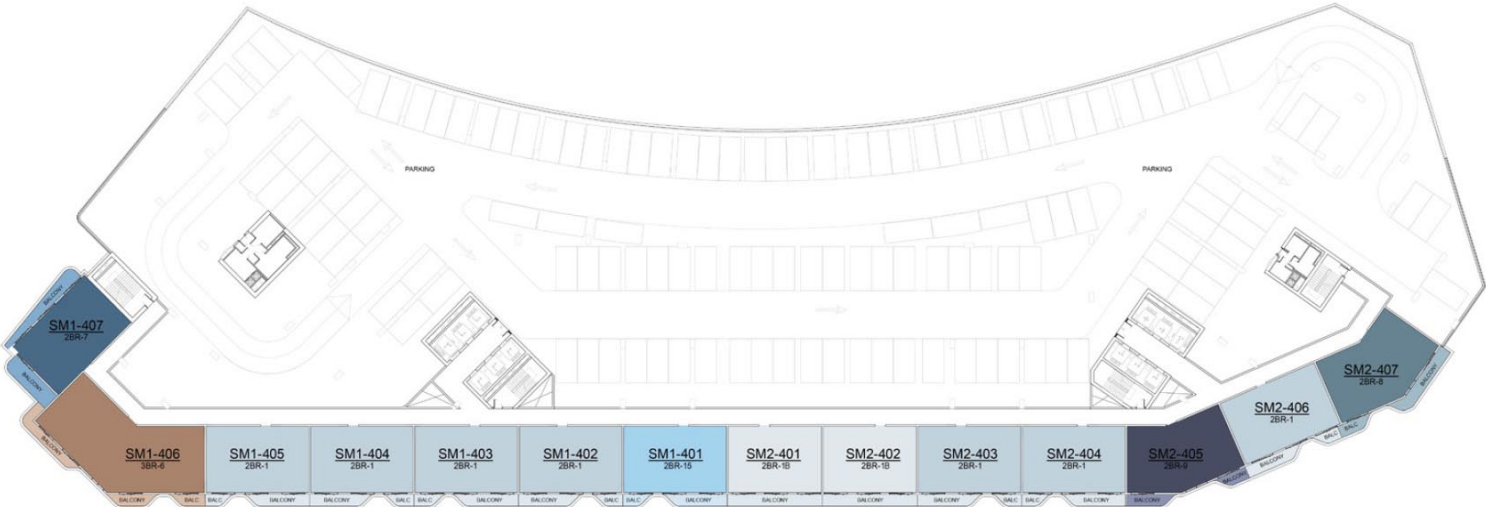
- 2BR · TYPE 1
- 2BR · TYPE 1B
- 2BR · TYPE 8
- 2BR · TYPE 9
- 2BR · TYPE 15
- 2BR · TYPE 16
- 3BR · TYPE 6



Floor layouts must only be referred for locating the unit type on a floor. Balcony profiles may differ slightly during subsequent design development stages.

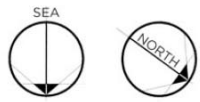
TH: Duplex Townhouse PH: Duplex Penthouse 1BR: One Bedroom 2BR: Two Bedroom 3BR: Three Bedroom

4TH PODIUM FLOOR PLAN



DESCRIPTION

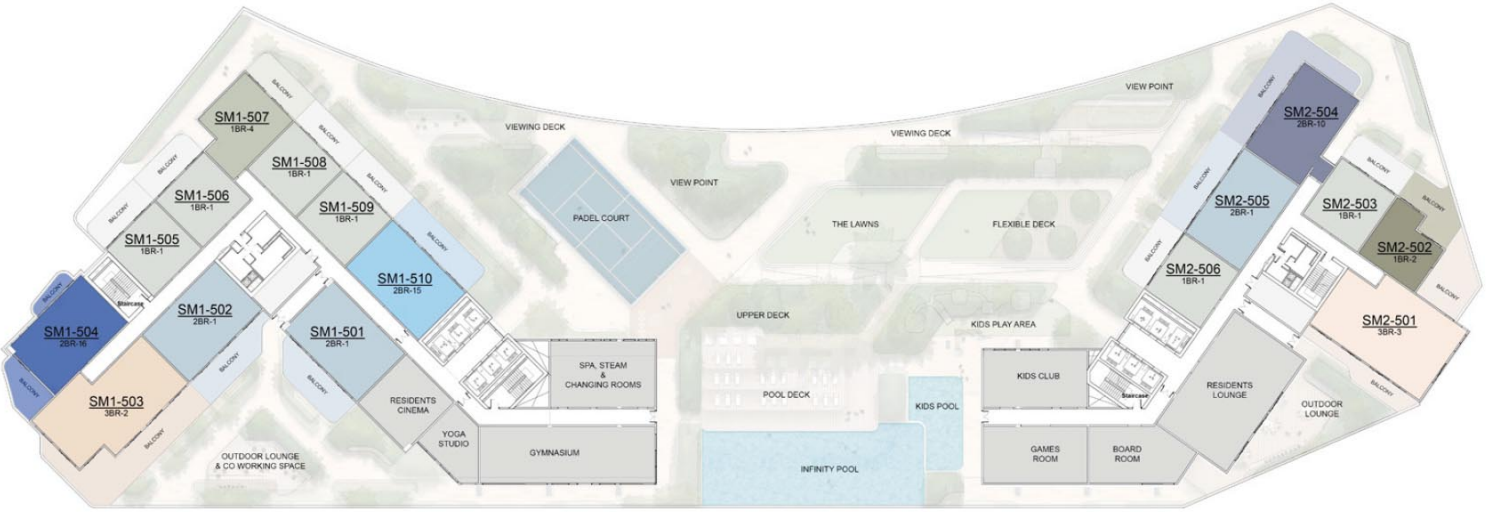
- 2BR - TYPE 1
- 2BR - TYPE 1B
- 2BR - TYPE 7
- 2BR - TYPE 8
- 2BR - TYPE 9
- 2BR - TYPE 15
- 3BR - TYPE 6



Floor layouts must only be referred for locating the unit type on a floor. Balcony profiles may differ slightly during subsequent design development stages.

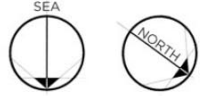
TH: Duplex Townhouse PH: Duplex Penthouse 1BR: One Bedroom 2BR: Two Bedroom 3BR: Three Bedroom

5TH FLOOR PLAN



DESCRIPTION

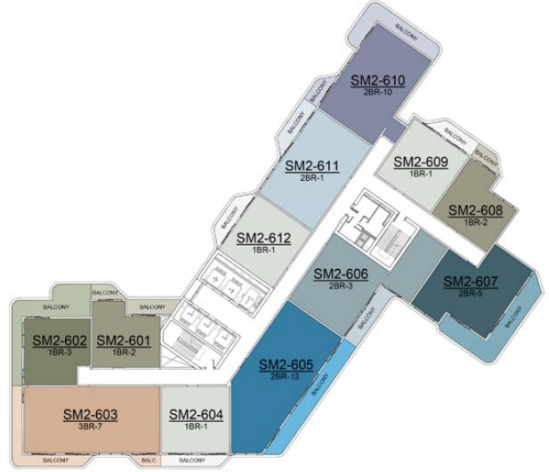
1BR - TYPE 1	2BR - TYPE 1	2BR - TYPE 15	3BR - TYPE 2
1BR - TYPE 2	2BR - TYPE 7	2BR - TYPE 16	3BR - TYPE 3
1BR - TYPE 4	2BR - TYPE 10		



Floor layouts must only be referred for locating the unit type on a floor. Balcony profiles may differ slightly during subsequent design development stages.

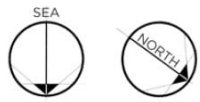
TH: Duplex Townhouse PH: Duplex Penthouse 1BR: One Bedroom 2BR: Two Bedroom 3BR: Three Bedroom

6TH & 10TH FLOOR PLAN



DESCRIPTION

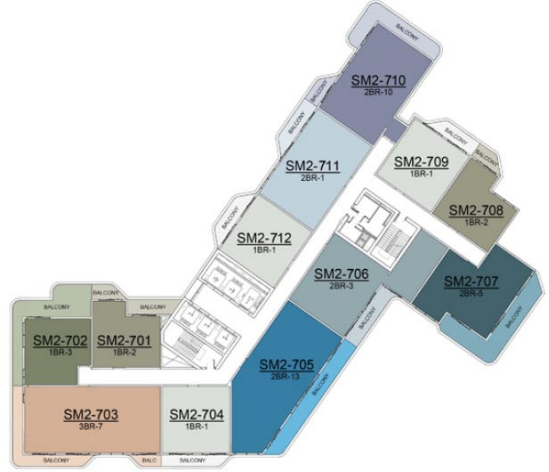
1BR - TYPE 1	2BR - TYPE 1	2BR - TYPE 7	2BR - TYPE 16	3BR - TYPE 7
1BR - TYPE 2	2BR - TYPE 3	2BR - TYPE 10		
1BR - TYPE 3	2BR - TYPE 4	2BR - TYPE 12		
1BR - TYPE 4	2BR - TYPE 5	2BR - TYPE 13		
	2BR - TYPE 6	2BR - TYPE 15		



Floor layouts must only be referred for locating the unit type on a floor. Balcony profiles may differ slightly during subsequent design development stages.

TH: Duplex Townhouse PH: Duplex Penthouse 1BR: One Bedroom 2BR: Two Bedroom 3BR: Three Bedroom

7TH FLOOR PLAN



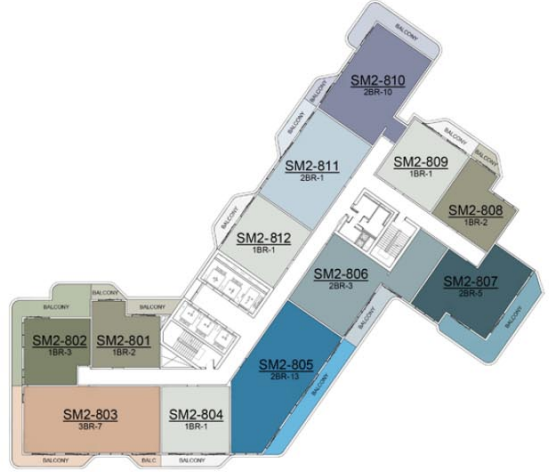
DESCRIPTION

1BR - TYPE 1	2BR - TYPE 1	2BR - TYPE 7	2BR - TYPE 16	3BR - TYPE 7
1BR - TYPE 2	2BR - TYPE 3	2BR - TYPE 10		
1BR - TYPE 3	2BR - TYPE 4	2BR - TYPE 12		
1BR - TYPE 4	2BR - TYPE 5	2BR - TYPE 13		
	2BR - TYPE 6	2BR - TYPE 15		



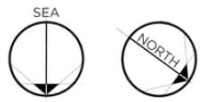
Floor layouts must only be referred for locating the unit type on a floor. Balcony profiles may differ slightly during subsequent design development stages. TH: Duplex Townhouse PH: Duplex Penthouse 1BR: One Bedroom 2BR: Two Bedroom 3BR: Three Bedroom

8TH & 9TH FLOOR PLAN



DESCRIPTION

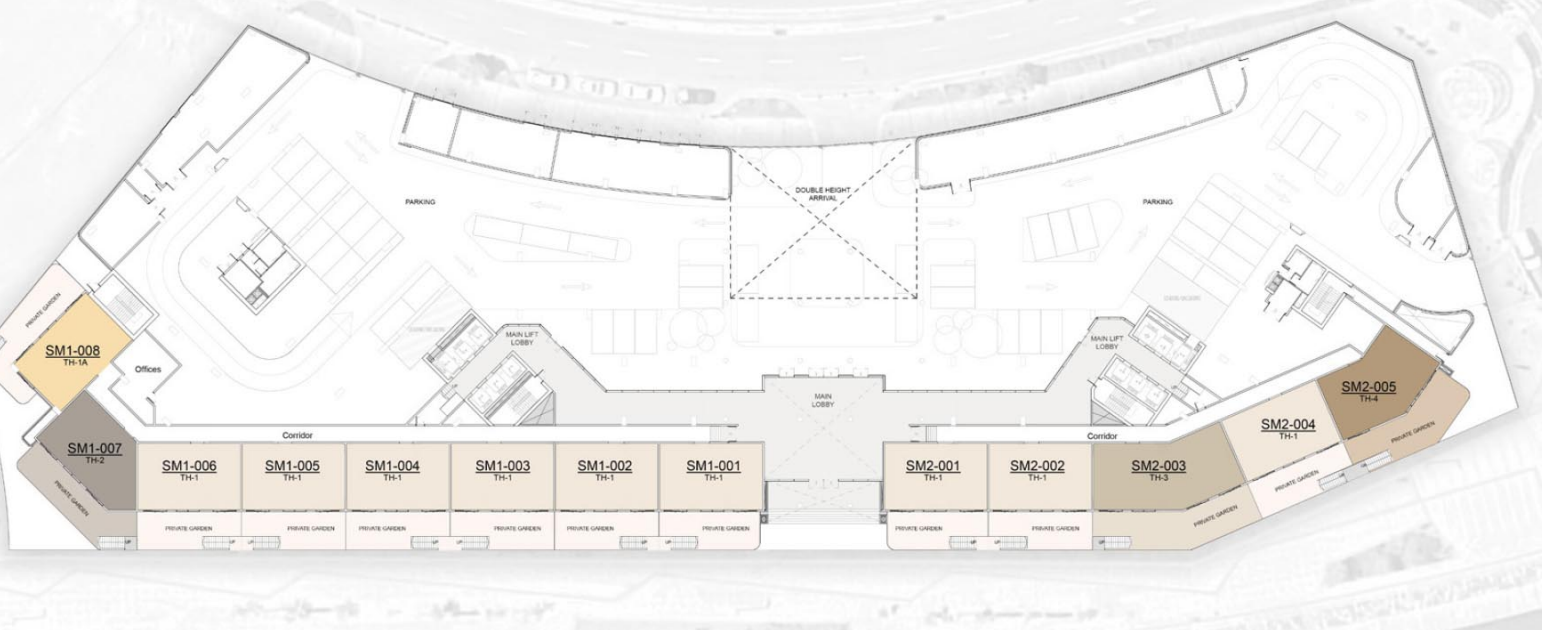
1BR - TYPE 1	2BR - TYPE 1	2BR - TYPE 7	2BR - TYPE 15	3BR - TYPE 7
1BR - TYPE 2	2BR - TYPE 3	2BR - TYPE 10	2BR - TYPE 16	3BR - TYPE 8
1BR - TYPE 3	2BR - TYPE 4	2BR - TYPE 12		
1BR - TYPE 4	2BR - TYPE 5	2BR - TYPE 13		
1BR - TYPE 5	2BR - TYPE 6	2BR - TYPE 14		



Floor layouts must only be referred for locating the unit type on a floor. Balcony profiles may differ slightly during subsequent design development stages.

TH: Duplex Townhouse PH: Duplex Penthouse 1BR: One Bedroom 2BR: Two Bedroom 3BR: Three Bedroom

GROUND FLOOR PLAN



DESCRIPTION

- TH - TYPE 1
- TH - TYPE 1A
- TH - TYPE 2
- TH - TYPE 3
- TH - TYPE 4

PROMENADE



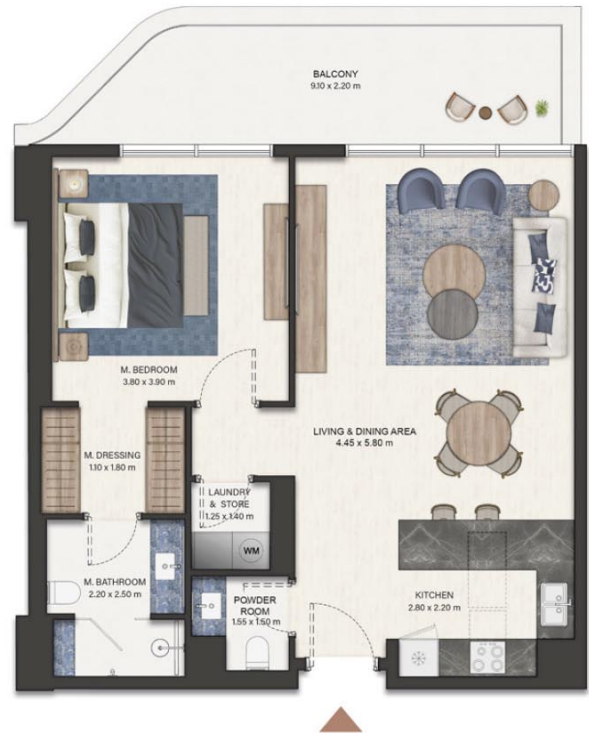
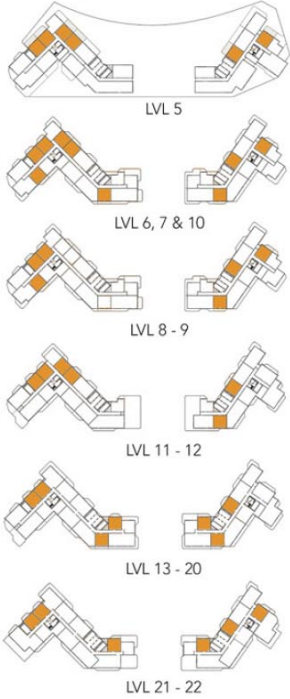
Floor layouts must only be referred for locating the unit type on a floor. Balcony profiles may differ slightly during subsequent design development stages.

TH: Duplex Townhouse PH: Duplex Penthouse 1BR: One Bedroom 2BR: Two Bedroom 3BR: Three Bedroom

ONE BEDROOM (TYPE - 1)

No. of BR	1
Total Area	808 Sq.ft *

(* Starting from

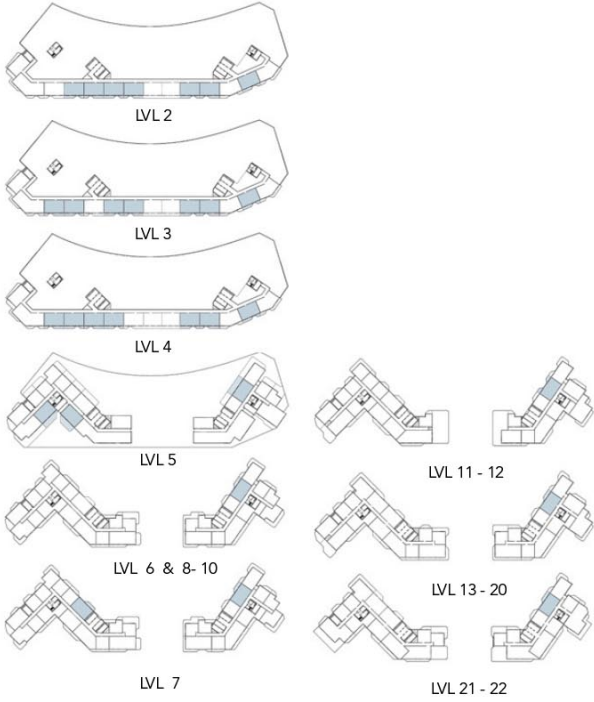


Disclaimer: Dimensions, apartment areas & layouts are indicative and may differ slightly during subsequent design development stages. Furniture shown is for illustration purpose only.

TWO BEDROOM (TYPE - 1)

No. of BR	2
Total Area	1,273 Sq.ft *

(* Starting from

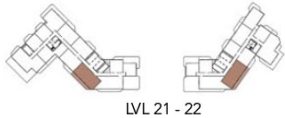


Disclaimer: Dimensions, apartment areas & layouts are indicative and may differ slightly during subsequent design development stages. Furniture shown is for illustration purpose only.

THREE BEDROOM (TYPE - 1)

No. of BR	3
Total Area	1,878 Sq.ft *

(*) Starting from



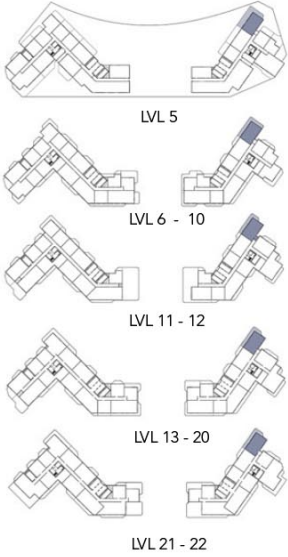
LVL 21 - 22

Disclaimer: Dimensions, apartment areas & layouts are indicative and may differ slightly during subsequent design development stages. Furniture shown is for illustration purpose only.

TWO BEDROOM (TYPE - 10)

No. of BR	2
Total Area	1,476 Sq.ft *

(*) Starting from

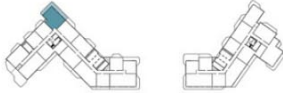


Disclaimer: Dimensions, apartment areas & layouts are indicative and may differ slightly during subsequent design development stages. Furniture shown is for illustration purpose only.

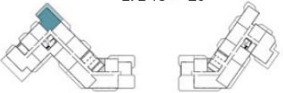
TWO BEDROOM (TYPE - 11)

No. of BR	2
Total Area	1,644 Sq.ft *

(* Starting from



LVL 13 - 20



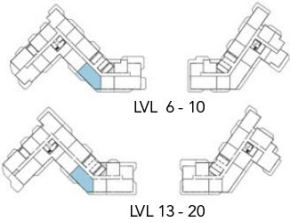
LVL 21 - 22

Disclaimer: Dimensions, apartment areas & layouts are indicative and may differ slightly during subsequent design development stages. Furniture shown is for illustration purpose only.

TWO BEDROOM (TYPE - 12)

No. of BR	2
Total Area	1,666 Sq.ft *

(*) Starting from

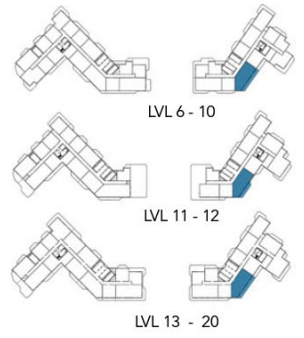


Disclaimer: Dimensions, apartment areas & layouts are indicative and may differ slightly during subsequent design development stages. Furniture shown is for illustration purpose only.

TWO BEDROOM (TYPE - 13)

No. of BR	2
Total Area	1,735 Sq.ft *

(*) Starting from

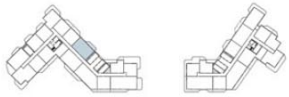
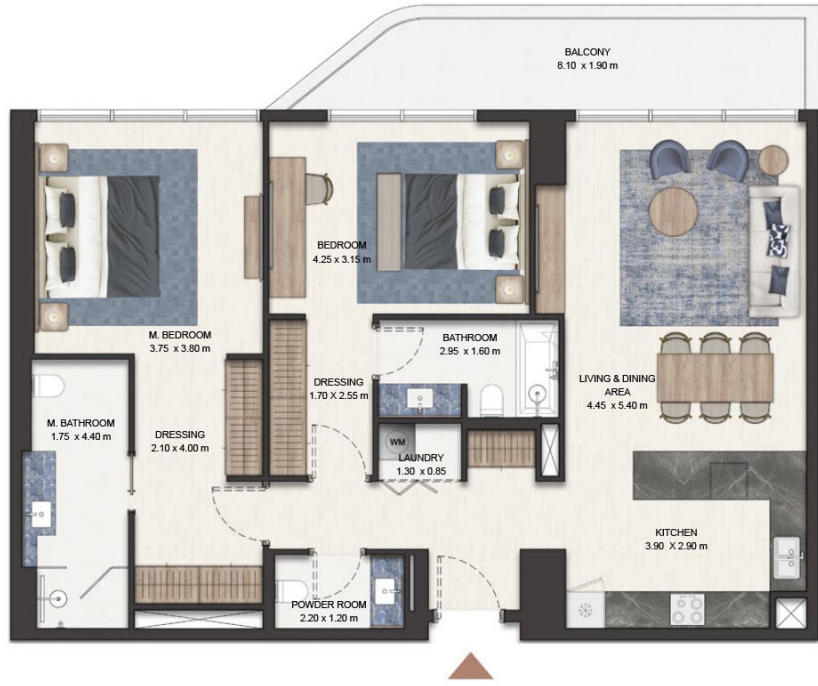


Disclaimer: Dimensions, apartment areas & layouts are indicative and may differ slightly during subsequent design development stages. Furniture shown is for illustration purpose only.

TWO BEDROOM (TYPE 14)

No. of BR	2
Total Area	1,273 Sq.ft *

(* Starting from



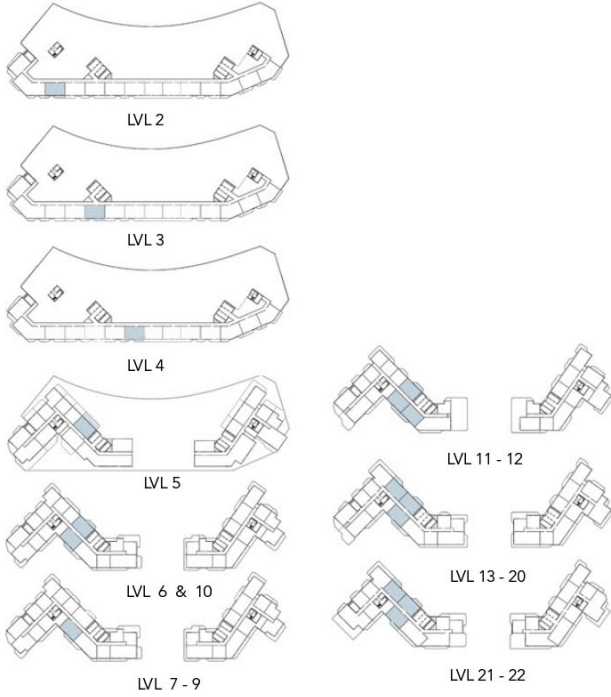
LVL 8 - 9

Disclaimer: Dimensions, apartment areas & layouts are indicative and may differ slightly during subsequent design development stages. Furniture shown is for illustration purpose only.

TWO BEDROOM (TYPE - 15)

No. of BR	2
Total Area	1,273 Sq.ft *

(* Starting from

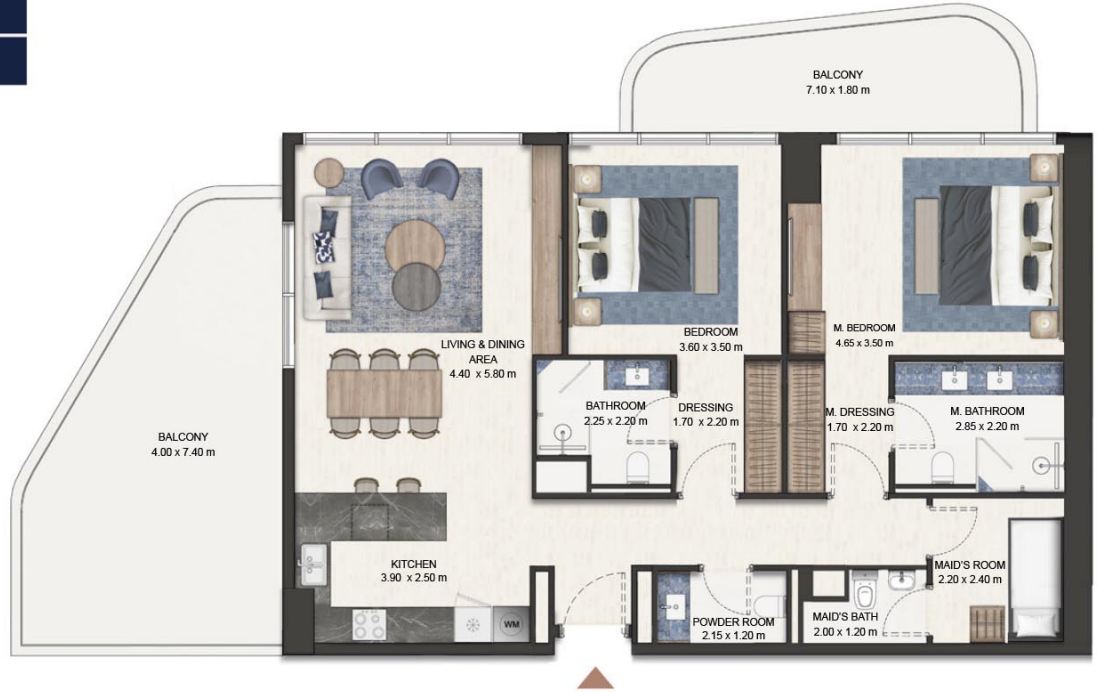
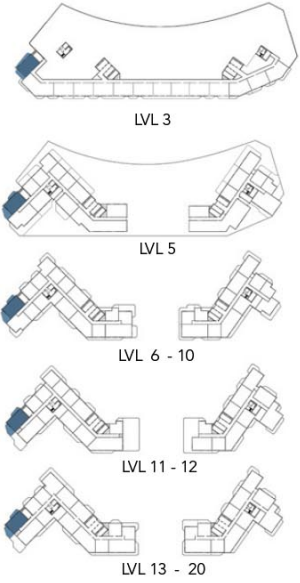


Disclaimer: Dimensions, apartment areas & layouts are indicative and may differ slightly during subsequent design development stages. Furniture shown is for illustration purpose only.

TWO BEDROOM (TYPE - 16)

No. of BR	2
Total Area	1,354 Sq.ft *

(*) Starting from

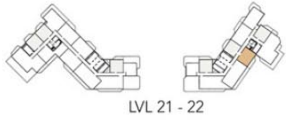


Disclaimer: Dimensions, apartment areas & layouts are indicative and may differ slightly during subsequent design development stages. Furniture shown is for illustration purpose only.

ONE BEDROOM (TYPE - 1A)

No. of BR	1
Total Area	1,038 Sq.ft

(*) Starting from



Disclaimer: Dimensions, apartment areas & layouts are indicative and may differ slightly during subsequent design development stages. Furniture shown is for illustration purpose only.

TWO BEDROOM (TYPE - 1A)

No. of BR	2
Total Area	3,311 Sq.ft *

(*) Starting from



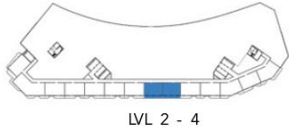
LVL 11-12

Disclaimer: Dimensions, apartment areas & layouts are indicative and may differ slightly during subsequent design development stages. Furniture shown is for illustration purpose only.

TWO BEDROOM (TYPE - 1B)

No. of BR	2
Total Area	1,237 Sq.ft *

(*) Starting from

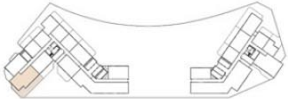


Disclaimer: Dimensions, apartment areas & layouts are indicative and may differ slightly during subsequent design development stages. Furniture shown is for illustration purpose only.

THREE BEDROOM (TYPE - 2)

No. of BR	3
Total Area	2,679 Sq.ft

(*) Starting from



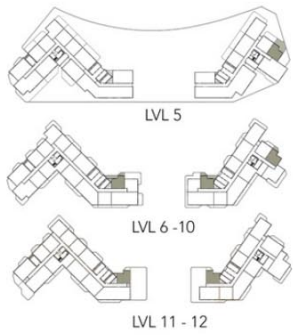
LVL 5

Disclaimer: Dimensions, apartment areas & layouts are indicative and may differ slightly during subsequent design development stages. Furniture shown is for illustration purpose only.

ONE BEDROOM (TYPE - 2)

No. of BR	1
Total Area	731 Sq.ft *

(*) Starting from

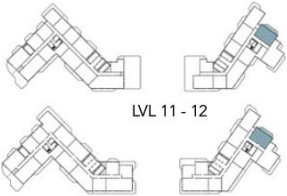


Disclaimer: Dimensions, apartment areas & layouts are indicative and may differ slightly during subsequent design development stages. Furniture shown is for illustration purpose only.

TWO BEDROOM (TYPE - 2)

No. of BR	2
Total Area	1,284 Sq.ft *

(*) Starting from



LVL 11 - 12

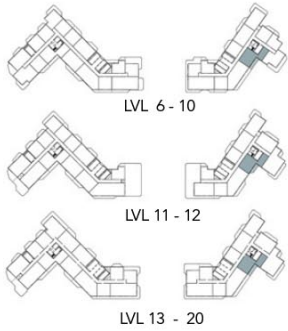
LVL 13 - 20

Disclaimer: Dimensions, apartment areas & layouts are indicative and may differ slightly during subsequent design development stages. Furniture shown is for illustration purpose only.

TWO BEDROOM (TYPE - 3)

No. of BR	2
Total Area	1,326 Sq.ft *

(*) Starting from

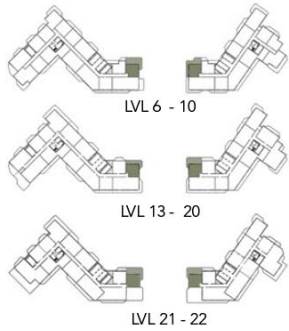


Disclaimer: Dimensions, apartment areas & layouts are indicative and may differ slightly during subsequent design development stages. Furniture shown is for illustration purpose only.

ONE BEDROOM (TYPE - 3)

No. of BR	1
Total Area	1,020 Sq.ft *

(*) Starting from

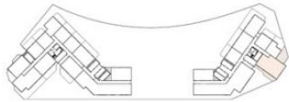


Disclaimer: Dimensions, apartment areas & layouts are indicative and may differ slightly during subsequent design development stages. Furniture shown is for illustration purpose only.

THREE BEDROOM (TYPE - 3)

No. of BR	3
Total Area	2,664 Sq.ft

(*) Starting from



LVL 5

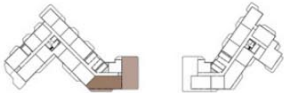
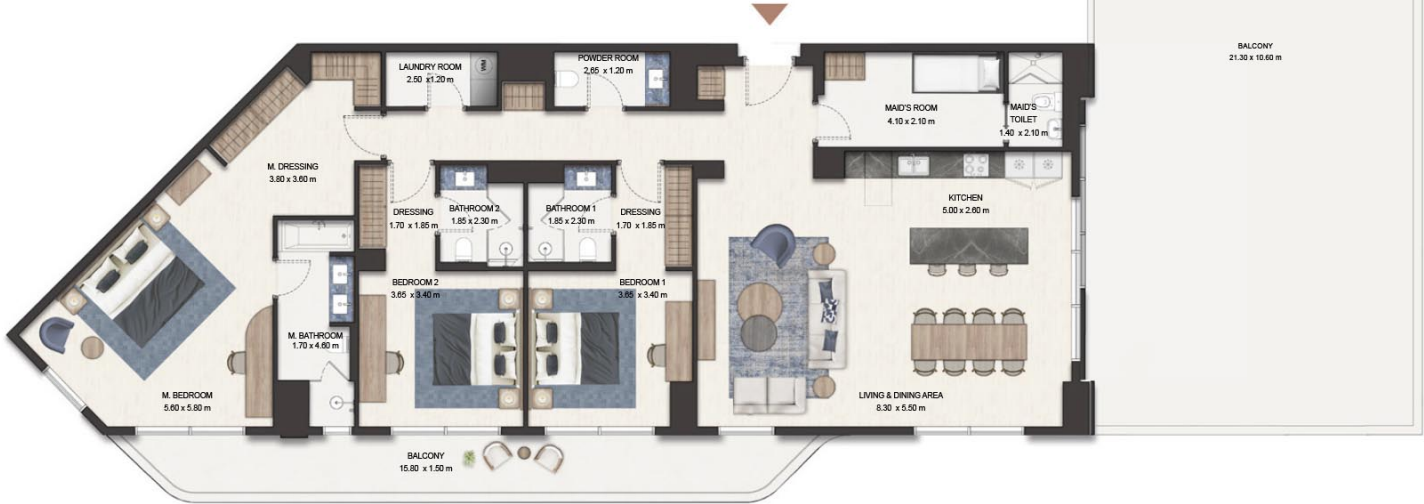


Disclaimer: Dimensions, apartment areas & layouts are indicative and may differ slightly during subsequent design development stages. Furniture shown is for illustration purpose only.

THREE BEDROOM (TYPE - 4)

No. of BR	3
Total Area	4,514 Sq.ft *

(* Starting from



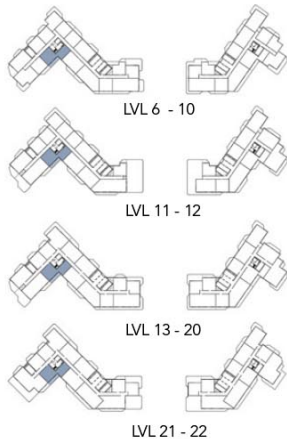
LVL 11 - 12

Disclaimer: Dimensions, apartment areas & layouts are indicative and may differ slightly during subsequent design development stages. Furniture shown is for illustration purpose only.

TWO BEDROOM (TYPE - 4)

No. of BR	2
Total Area	1,428 Sq.ft *

(*) Starting from

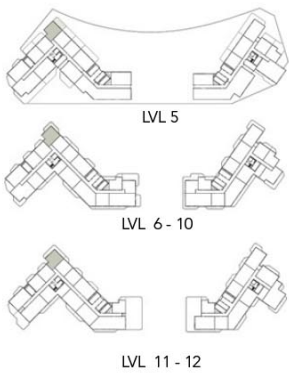


Disclaimer: Dimensions, apartment areas & layouts are indicative and may differ slightly during subsequent design development stages. Furniture shown is for illustration purpose only.

ONE BEDROOM (TYPE - 4)

No. of BR	1
Total Area	1,157 Sq.ft *

(*) Starting from

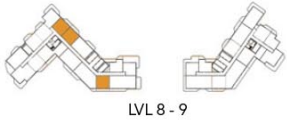


Disclaimer: Dimensions, apartment areas & layouts are indicative and may differ slightly during subsequent design development stages. Furniture shown is for illustration purpose only.

ONE BEDROOM (TYPE - 5)

No. of BR	1
Total Area	808 Sq.ft *

(*) Starting from



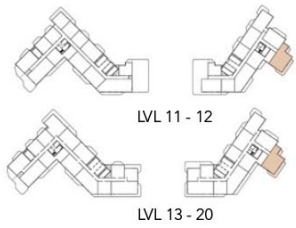
LVL 8 - 9

Disclaimer: Dimensions, apartment areas & layouts are indicative and may differ slightly during subsequent design development stages. Furniture shown is for illustration purpose only.

THREE BEDROOM (TYPE - 5)

No. of BR	3
Total Area	1,861 Sq.ft *

(*) Starting from

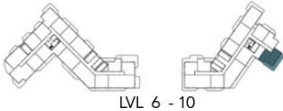


Disclaimer: Dimensions, apartment areas & layouts are indicative and may differ slightly during subsequent design development stages. Furniture shown is for illustration purpose only.

TWO BEDROOM (TYPE - 5)

No. of BR	2
Total Area	1,488 Sq.ft *

(*) Starting from

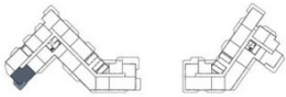


Disclaimer: Dimensions, apartment areas & layouts are indicative and may differ slightly during subsequent design development stages. Furniture shown is for illustration purpose only.

TWO BEDROOM (TYPE - 6)

No. of BR	2
Total Area	1,499 Sq.ft *

(*) Starting from



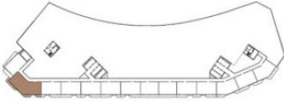
LVL 6 - 10

Disclaimer: Dimensions, apartment areas & layouts are indicative and may differ slightly during subsequent design development stages. Furniture shown is for illustration purpose only.

THREE BEDROOM (TYPE - 6)

No. of BR	3
Total Area	2,233 Sq.ft *

(* Starting from



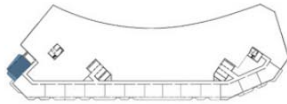
LVL 2 - 4

Disclaimer: Dimensions, apartment areas & layouts are indicative and may differ slightly during subsequent design development stages. Furniture shown is for illustration purpose only.

TWO BEDROOM (TYPE - 7)

No. of BR	2
Total Area	1,354 Sq.ft *

(* Starting from



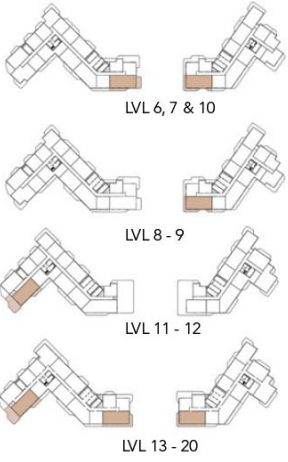
LVL 2 & 4

Disclaimer: Dimensions, apartment areas & layouts are indicative and may differ slightly during subsequent design development stages. Furniture shown is for illustration purpose only.

THREE BEDROOM (TYPE - 7)

No. of BR	3
Total Area	1,740 Sq.ft *

(* Starting from



Disclaimer: Dimensions, apartment areas & layouts are indicative and may differ slightly during subsequent design development stages. Furniture shown is for illustration purpose only.

THREE BEDROOM (TYPE -8)

No. of BR	3
Total Area	1,878 Sq.ft *

(* Starting from



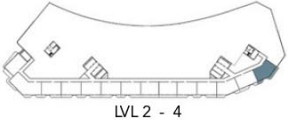
LVL 8 - 9

Disclaimer: Dimensions, apartment areas & layouts are indicative and may differ slightly during subsequent design development stages. Furniture shown is for illustration purpose only.

TWO BEDROOM (TYPE - 8)

No. of BR	2
Total Area	1,450 Sq.ft*

(*) Starting from



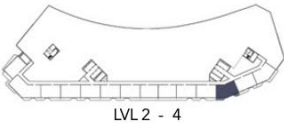
LVL 2 - 4

Disclaimer: Dimensions, apartment areas & layouts are indicative and may differ slightly during subsequent design development stages. Furniture shown is for illustration purpose only.

TWO BEDROOM (TYPE - 9)

No. of BR	2
Total Area	1,366 Sq.ft *

(* Starting from



LVL 2 - 4

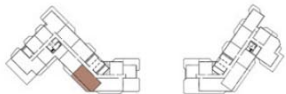
Disclaimer: Dimensions, apartment areas & layouts are indicative and may differ slightly during subsequent design development stages. Furniture shown is for illustration purpose only.

THREE BEDROOM (TYPE - 9)

No. of BR 3

Total Area 1,878 Sq.ft *

(*) Starting from



LVL 21 - 22

Disclaimer: Dimensions, apartment areas & layouts are indicative and may differ slightly during subsequent design development stages. Furniture shown is for illustration purpose only.