

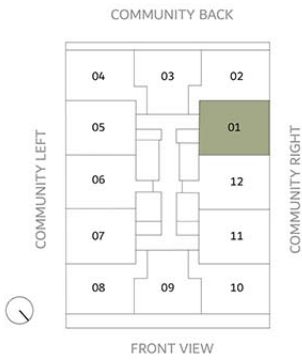
# The Cube Quarter Residences - Apartment



## THE CUBE RESIDENCES

### 1 BEDROOM -TYPE 1

|            |                        |
|------------|------------------------|
| LEVEL 1    | UNIT 101               |
| SUITE AREA | 639.91 FT <sup>2</sup> |
| BALCONY    | 68.24FT <sup>2</sup>   |
| TOTAL AREA | 708.16FT <sup>2</sup>  |



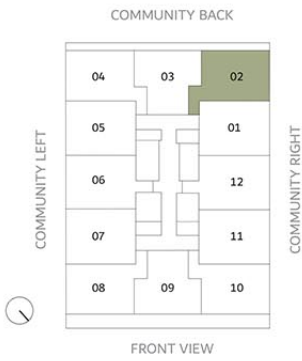
Disclaimer: This document is intended for estimation purposes only. The information contained herein is subject to change and may be modified during the course of construction. The developer reserves the right to make adjustments as necessary without prior notice. Any discrepancies or variations that arise during the construction process will be addressed and resolved in accordance with the project's requirements and best practices.



# THE CUBE RESIDENCES

## 1 BEDROOM -TYPE 2

|            |                        |
|------------|------------------------|
| LEVEL 1    | UNIT 102               |
| SUITE AREA | 689 FT <sup>2</sup>    |
| BALCONY    | 96.01 FT <sup>2</sup>  |
| TOTAL AREA | 785.01 FT <sup>2</sup> |



Disclaimer: This document is intended for estimation purposes only. The information contained herein is subject to change and may be modified during the course of construction. The developer reserves the right to make adjustments as necessary without prior notice. Any discrepancies or variations that arise during the construction process will be addressed and resolved in accordance with the project's requirements and best practices.

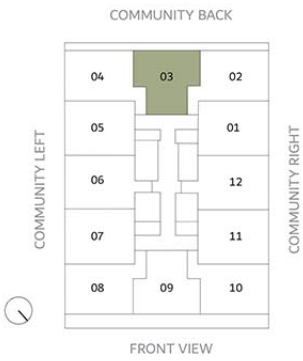
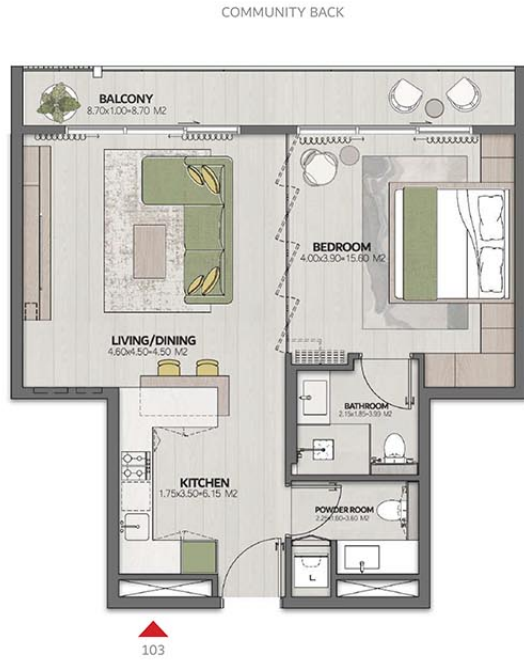


# THE CUBE

RESIDENCES

## 1 BEDROOM -TYPE 3

|            |                        |
|------------|------------------------|
| LEVEL 1    | UNIT 103               |
| SUITE AREA | 653.37FT <sup>2</sup>  |
| BALCONY    | 98.17 FT <sup>2</sup>  |
| TOTAL AREA | 751.54 FT <sup>2</sup> |



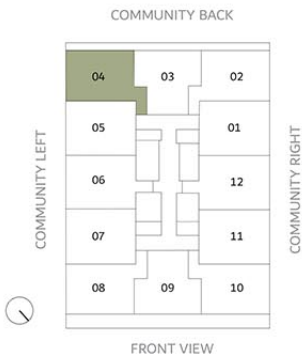
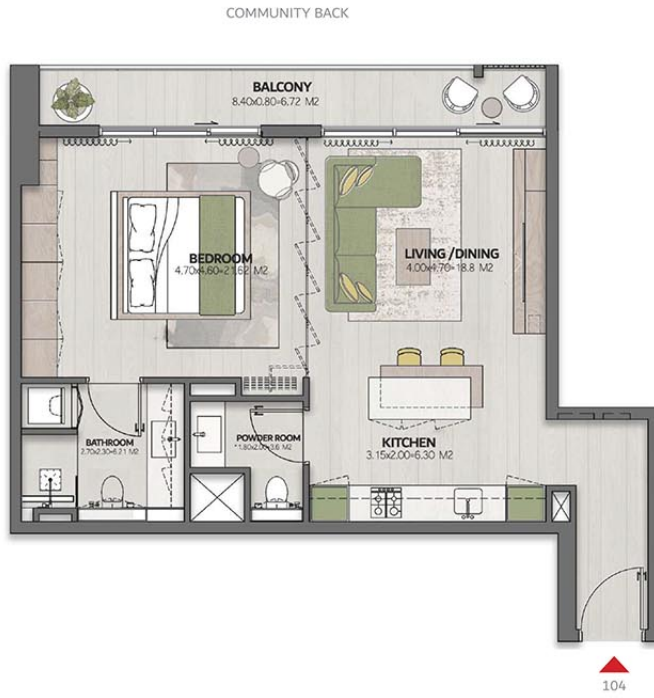
Disclaimer: This document is intended for estimation purposes only. The information contained herein is subject to change and may be modified during the course of construction. The developer reserves the right to make adjustments as necessary without prior notice. Any discrepancies or variations that arise during the construction process will be addressed and resolved in accordance with the project's requirements and best practices.



# THE CUBE RESIDENCES

## 1 BEDROOM -TYPE 2

|            |                        |
|------------|------------------------|
| LEVEL 1    | UNIT 104               |
| SUITE AREA | 689FT <sup>2</sup>     |
| BALCONY    | 96.01 FT <sup>2</sup>  |
| TOTAL AREA | 785.01 FT <sup>2</sup> |



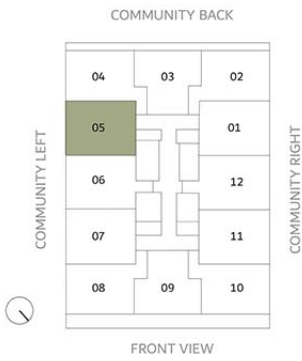
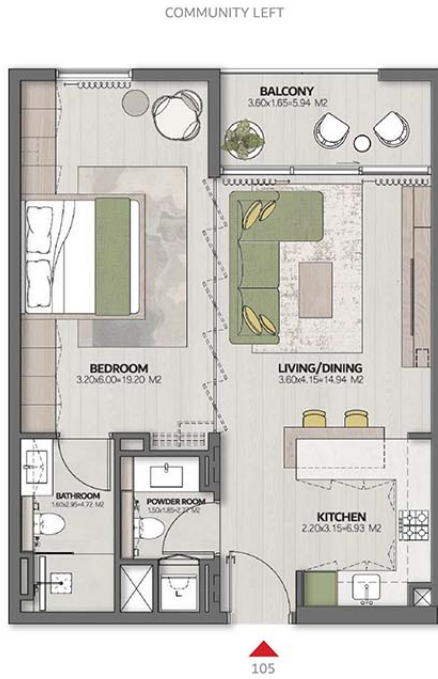
Disclaimer: This document is intended for estimation purposes only. The information contained herein is subject to change and may be modified during the course of construction. The developer reserves the right to make adjustments as necessary without prior notice. Any discrepancies or variations that arise during the construction process will be addressed and resolved in accordance with the project's requirements and best practices.



# THE CUBE RESIDENCES

## 1 BEDROOM -TYPE 1

|            |                        |
|------------|------------------------|
| LEVEL 1    | UNIT 105               |
| SUITE AREA | 639.91 FT <sup>2</sup> |
| BALCONY    | 68.24FT <sup>2</sup>   |
| TOTAL AREA | 708.16FT <sup>2</sup>  |



Disclaimer: This document is intended for estimation purposes only. The information contained herein is subject to change and may be modified during the course of construction. The developer reserves the right to make adjustments as necessary without prior notice. Any discrepancies or variations that arise during the construction process will be addressed and resolved in accordance with the project's requirements and best practices.

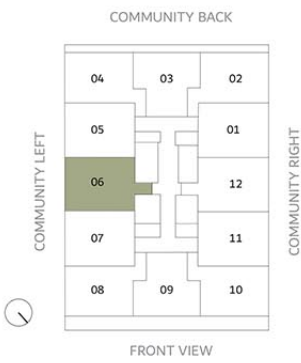




# THE CUBE RESIDENCES

## 1 BEDROOM -TYPE 1

|            |                        |
|------------|------------------------|
| LEVEL 1    | UNIT 106               |
| SUITE AREA | 681.57 FT <sup>2</sup> |
| BALCONY    | 68.14FT <sup>2</sup>   |
| TOTAL AREA | 749.71FT <sup>2</sup>  |



Disclaimer: This document is intended for estimation purposes only. The information contained herein is subject to change and may be modified during the course of construction. The developer reserves the right to make adjustments as necessary without prior notice. Any discrepancies or variations that arise during the construction process will be addressed and resolved in accordance with the project's requirements and best practices.

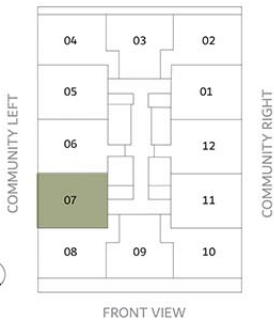


# THE CUBE RESIDENCES

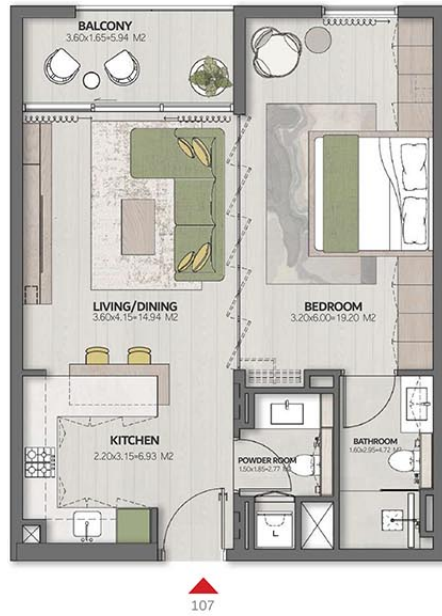
## 1 BEDROOM -TYPE 1

|            |                        |
|------------|------------------------|
| LEVEL 1    | UNIT 107               |
| SUITE AREA | 639.91 FT <sup>2</sup> |
| BALCONY    | 68.24FT <sup>2</sup>   |
| TOTAL AREA | 708.16FT <sup>2</sup>  |

COMMUNITY BACK



COMMUNITY LEFT



107

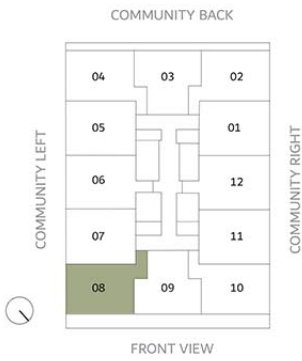
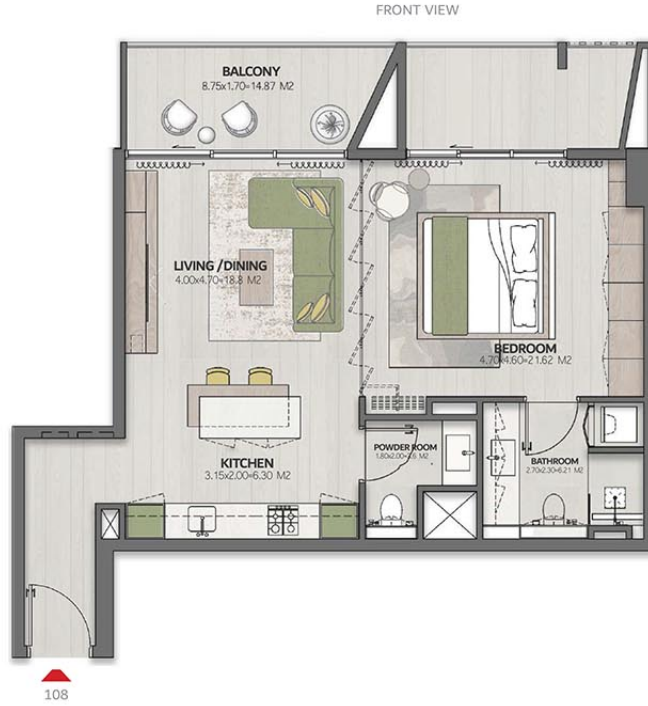
Disclaimer: This document is intended for estimation purposes only. The information contained herein is subject to change and may be modified during the course of construction. The developer reserves the right to make adjustments as necessary without prior notice. Any discrepancies or variations that arise during the construction process will be addressed and resolved in accordance with the project's requirements and best practices.



# THE CUBE RESIDENCES

## 1 BEDROOM -TYPE 2

|            |                        |
|------------|------------------------|
| LEVEL 1    | UNIT 108               |
| SUITE AREA | 689 FT <sup>2</sup>    |
| BALCONY    | 175.3 FT <sup>2</sup>  |
| TOTAL AREA | 864.34 FT <sup>2</sup> |



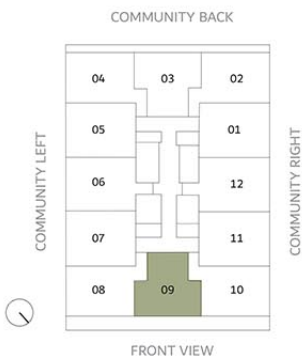
Disclaimer: This document is intended for estimation purposes only. The information contained herein is subject to change and may be modified during the course of construction. The developer reserves the right to make adjustments as necessary without prior notice. Any discrepancies or variations that arise during the construction process will be addressed and resolved in accordance with the project's requirements and best practices.



# THE CUBE RESIDENCES

## 1 BEDROOM -TYPE 3

|            |                        |
|------------|------------------------|
| LEVEL 1    | UNIT 109               |
| SUITE AREA | 653.37FT <sup>2</sup>  |
| BALCONY    | 177.80 FT <sup>2</sup> |
| TOTAL AREA | 831.19FT <sup>2</sup>  |



FRONT VIEW



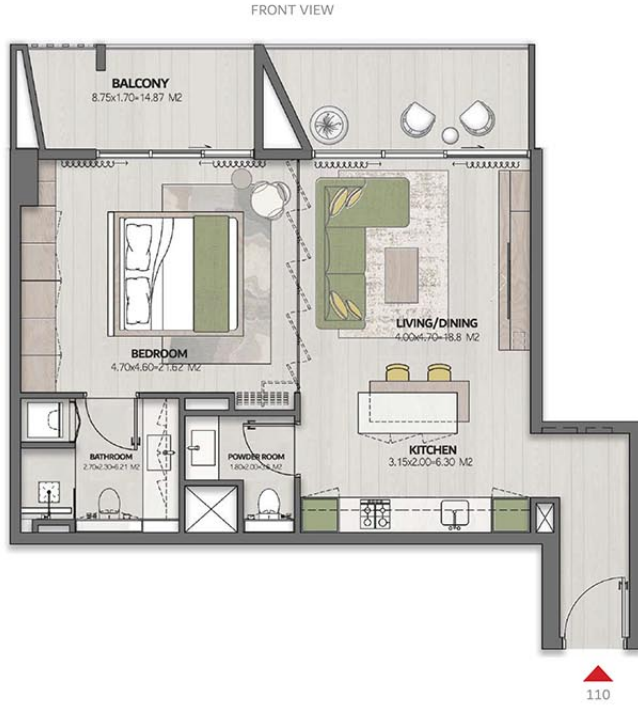
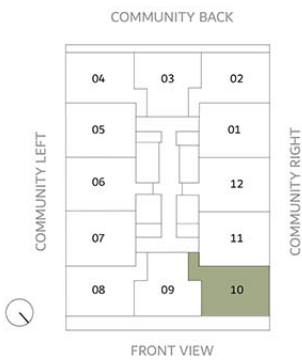
Disclaimer: This document is intended for estimation purposes only. The information contained herein is subject to change and may be modified during the course of construction. The developer reserves the right to make adjustments as necessary without prior notice. Any discrepancies or variations that arise during the construction process will be addressed and resolved in accordance with the project's requirements and best practices.



# THE CUBE RESIDENCES

## 1 BEDROOM -TYPE 2

|            |                        |
|------------|------------------------|
| LEVEL 1    | UNIT 110               |
| SUITE AREA | 689 FT <sup>2</sup>    |
| BALCONY    | 175.3 FT <sup>2</sup>  |
| TOTAL AREA | 864.34 FT <sup>2</sup> |



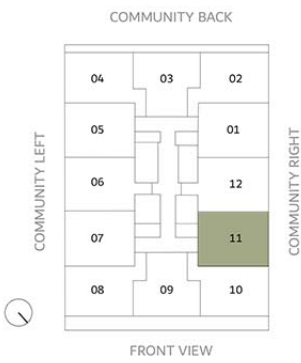
Disclaimer: This document is intended for estimation purposes only. The information contained herein is subject to change and may be modified during the course of construction. The developer reserves the right to make adjustments as necessary without prior notice. Any discrepancies or variations that arise during the construction process will be addressed and resolved in accordance with the project's requirements and best practices.



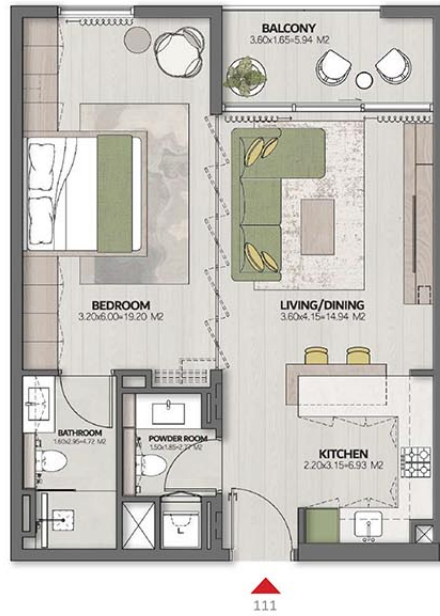
# THE CUBE RESIDENCES

## 1 BEDROOM -TYPE 1

|            |                        |
|------------|------------------------|
| LEVEL 1    | UNIT 111               |
| SUITE AREA | 639.91 FT <sup>2</sup> |
| BALCONY    | 68.24FT <sup>2</sup>   |
| TOTAL AREA | 708.16FT <sup>2</sup>  |



COMMUNITY RIGHT



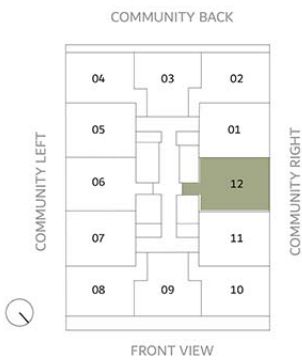
Disclaimer: This document is intended for estimation purposes only. The information contained herein is subject to change and may be modified during the course of construction. The developer reserves the right to make adjustments as necessary without prior notice. Any discrepancies or variations that arise during the construction process will be addressed and resolved in accordance with the project's requirements and best practices.



# THE CUBE RESIDENCES

## 1 BEDROOM -TYPE 1

|            |                        |
|------------|------------------------|
| LEVEL 1    | UNIT 112               |
| SUITE AREA | 681.57 FT <sup>2</sup> |
| BALCONY    | 68.14 FT <sup>2</sup>  |
| TOTAL AREA | 749.71 FT <sup>2</sup> |



COMMUNITY RIGHT



Disclaimer: This document is intended for estimation purposes only. The information contained herein is subject to change and may be modified during the course of construction. The developer reserves the right to make adjustments as necessary without prior notice. Any discrepancies or variations that arise during the construction process will be addressed and resolved in accordance with the project's requirements and best practices.

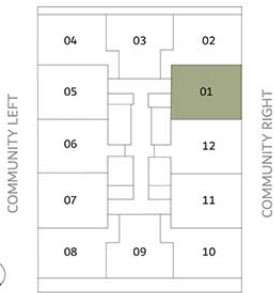


# THE CUBE RESIDENCES

## 1 BEDROOM -TYPE 1

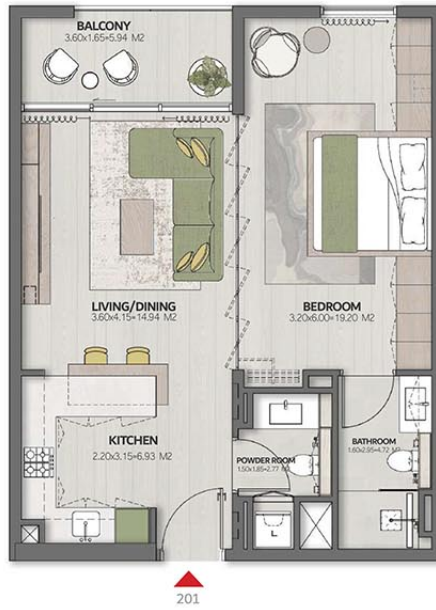
|            |                        |
|------------|------------------------|
| LEVEL 2    | UNIT 201               |
| SUITE AREA | 639.91 FT <sup>2</sup> |
| BALCONY    | 68.24FT <sup>2</sup>   |
| TOTAL AREA | 708.16FT <sup>2</sup>  |

COMMUNITY BACK



FRONT VIEW

COMMUNITY RIGHT



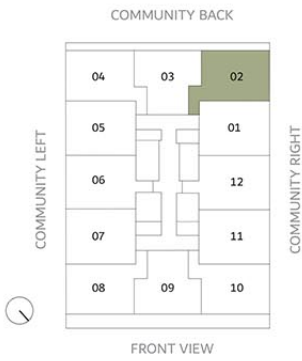
Disclaimer: This document is intended for estimation purposes only. The information contained herein is subject to change and may be modified during the course of construction. The developer reserves the right to make adjustments as necessary without prior notice. Any discrepancies or variations that arise during the construction process will be addressed and resolved in accordance with the project's requirements and best practices.



# THE CUBE RESIDENCES

## 1 BEDROOM -TYPE 2

|            |                        |
|------------|------------------------|
| LEVEL 2    | UNIT 202               |
| SUITE AREA | 689 FT <sup>2</sup>    |
| BALCONY    | 96.01 FT <sup>2</sup>  |
| TOTAL AREA | 785.01 FT <sup>2</sup> |



Disclaimer: This document is intended for estimation purposes only. The information contained herein is subject to change and may be modified during the course of construction. The developer reserves the right to make adjustments as necessary without prior notice. Any discrepancies or variations that arise during the construction process will be addressed and resolved in accordance with the project's requirements and best practices.

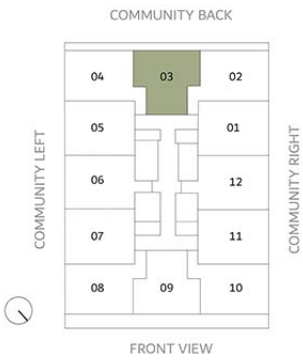
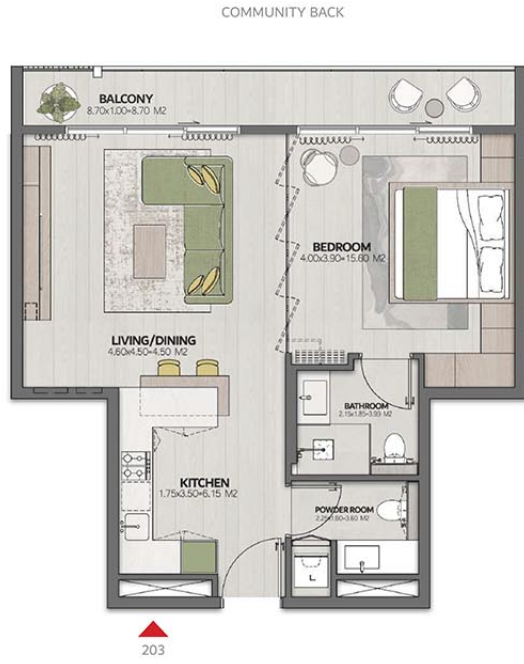


# THE CUBE

RESIDENCES

## 1 BEDROOM -TYPE 3

|            |                        |
|------------|------------------------|
| LEVEL 2    | UNIT 203               |
| SUITE AREA | 653.37FT <sup>2</sup>  |
| BALCONY    | 98.17 FT <sup>2</sup>  |
| TOTAL AREA | 751.54 FT <sup>2</sup> |



Disclaimer: This document is intended for estimation purposes only. The information contained herein is subject to change and may be modified during the course of construction. The developer reserves the right to make adjustments as necessary without prior notice. Any discrepancies or variations that arise during the construction process will be addressed and resolved in accordance with the project's requirements and best practices.



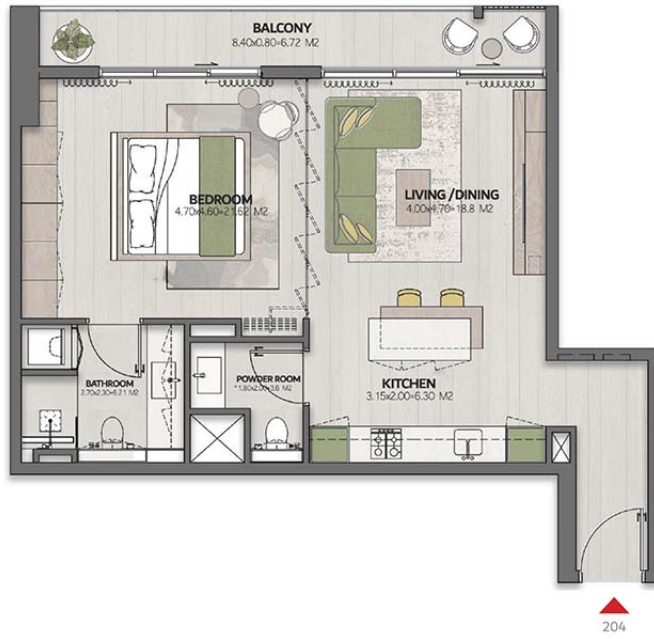


# THE CUBE RESIDENCES

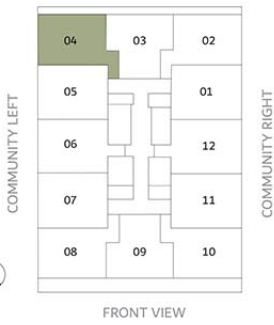
## 1 BEDROOM -TYPE 2

|            |                        |
|------------|------------------------|
| LEVEL 2    | UNIT 204               |
| SUITE AREA | 689FT <sup>2</sup>     |
| BALCONY    | 96.01 FT <sup>2</sup>  |
| TOTAL AREA | 785.01 FT <sup>2</sup> |

COMMUNITY BACK



COMMUNITY BACK



Disclaimer: This document is intended for estimation purposes only. The information contained herein is subject to change and may be modified during the course of construction. The developer reserves the right to make adjustments as necessary without prior notice. Any discrepancies or variations that arise during the construction process will be addressed and resolved in accordance with the project's requirements and best practices.

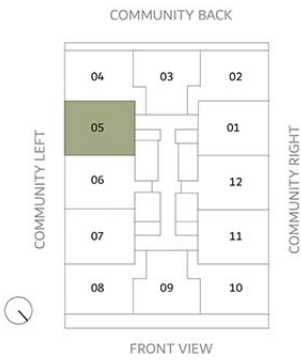




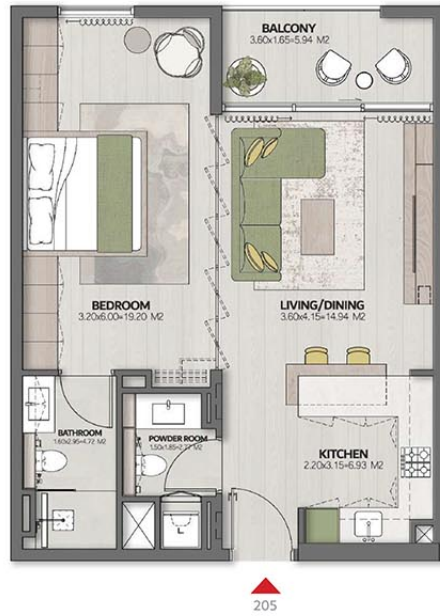
# THE CUBE RESIDENCES

## 1 BEDROOM -TYPE 1

|            |                        |
|------------|------------------------|
| LEVEL 2    | UNIT 205               |
| SUITE AREA | 639.91 FT <sup>2</sup> |
| BALCONY    | 68.24FT <sup>2</sup>   |
| TOTAL AREA | 708.16FT <sup>2</sup>  |



COMMUNITY LEFT



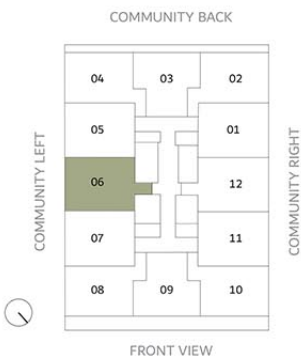
Disclaimer: This document is intended for estimation purposes only. The information contained herein is subject to change and may be modified during the course of construction. The developer reserves the right to make adjustments as necessary without prior notice. Any discrepancies or variations that arise during the construction process will be addressed and resolved in accordance with the project's requirements and best practices.



# THE CUBE RESIDENCES

## 1 BEDROOM -TYPE 1

|            |                        |
|------------|------------------------|
| LEVEL 2    | UNIT 206               |
| SUITE AREA | 681.57 FT <sup>2</sup> |
| BALCONY    | 68.14 FT <sup>2</sup>  |
| TOTAL AREA | 749.71 FT <sup>2</sup> |



Disclaimer: This document is intended for estimation purposes only. The information contained herein is subject to change and may be modified during the course of construction. The developer reserves the right to make adjustments as necessary without prior notice. Any discrepancies or variations that arise during the construction process will be addressed and resolved in accordance with the project's requirements and best practices.

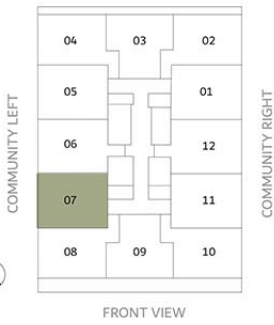


# THE CUBE RESIDENCES

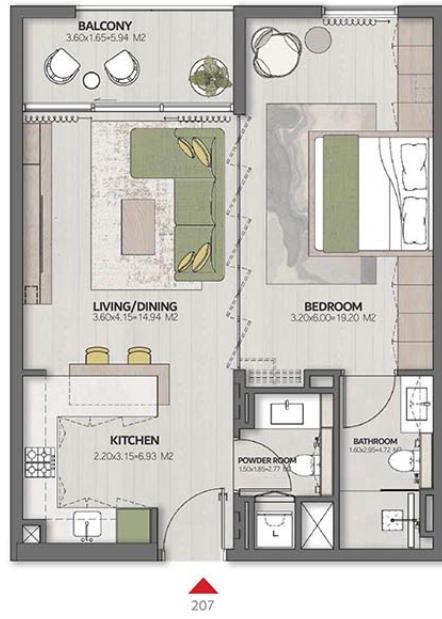
## 1 BEDROOM -TYPE 1

|            |                        |
|------------|------------------------|
| LEVEL 2    | UNIT 207               |
| SUITE AREA | 639.91 FT <sup>2</sup> |
| BALCONY    | 68.24FT <sup>2</sup>   |
| TOTAL AREA | 708.16FT <sup>2</sup>  |

COMMUNITY BACK



COMMUNITY LEFT



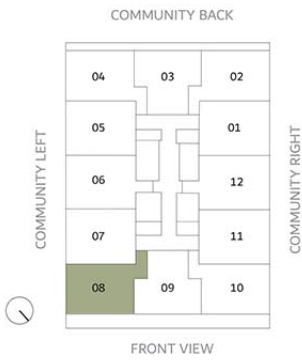
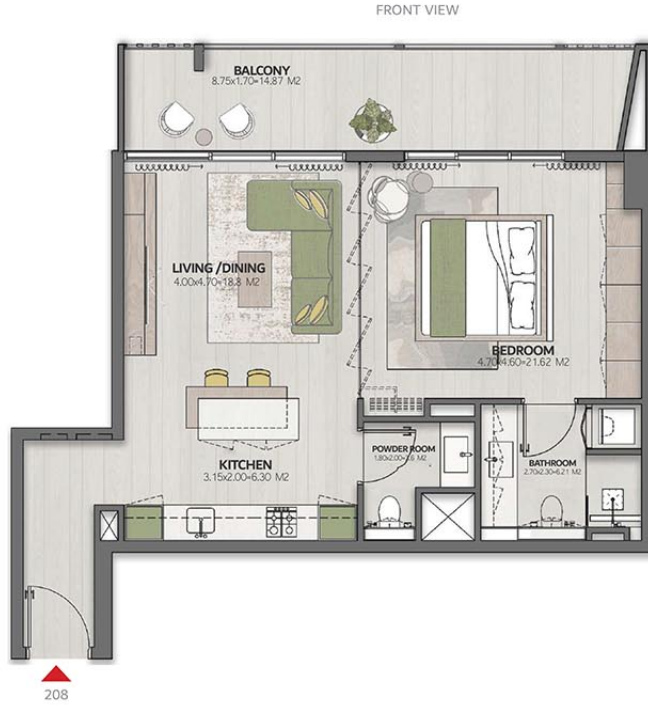
Disclaimer: This document is intended for estimation purposes only. The information contained herein is subject to change and may be modified during the course of construction. The developer reserves the right to make adjustments as necessary without prior notice. Any discrepancies or variations that arise during the construction process will be addressed and resolved in accordance with the project's requirements and best practices.



# THE CUBE RESIDENCES

## 1 BEDROOM -TYPE 2

|            |                        |
|------------|------------------------|
| LEVEL 2    | UNIT 208               |
| SUITE AREA | 689 FT <sup>2</sup>    |
| BALCONY    | 175.3 FT <sup>2</sup>  |
| TOTAL AREA | 864.34 FT <sup>2</sup> |



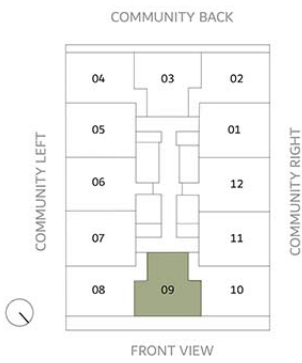
Disclaimer: This document is intended for estimation purposes only. The information contained herein is subject to change and may be modified during the course of construction. The developer reserves the right to make adjustments as necessary without prior notice. Any discrepancies or variations that arise during the construction process will be addressed and resolved in accordance with the project's requirements and best practices.



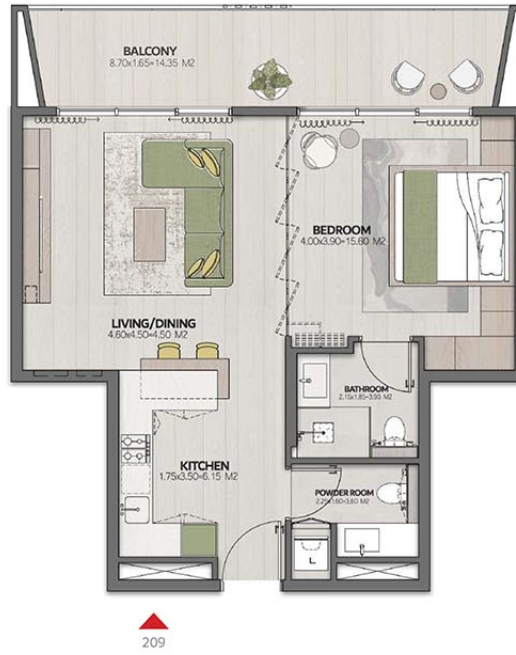
# THE CUBE RESIDENCES

## 1 BEDROOM -TYPE 3

|            |                        |
|------------|------------------------|
| LEVEL 2    | UNIT 209               |
| SUITE AREA | 653.37FT <sup>2</sup>  |
| BALCONY    | 177.80 FT <sup>2</sup> |
| TOTAL AREA | 831.19FT <sup>2</sup>  |



FRONT VIEW



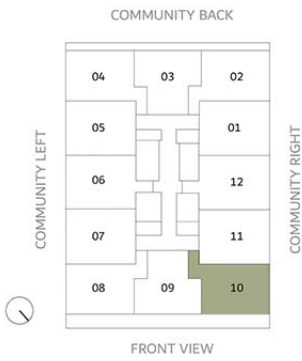
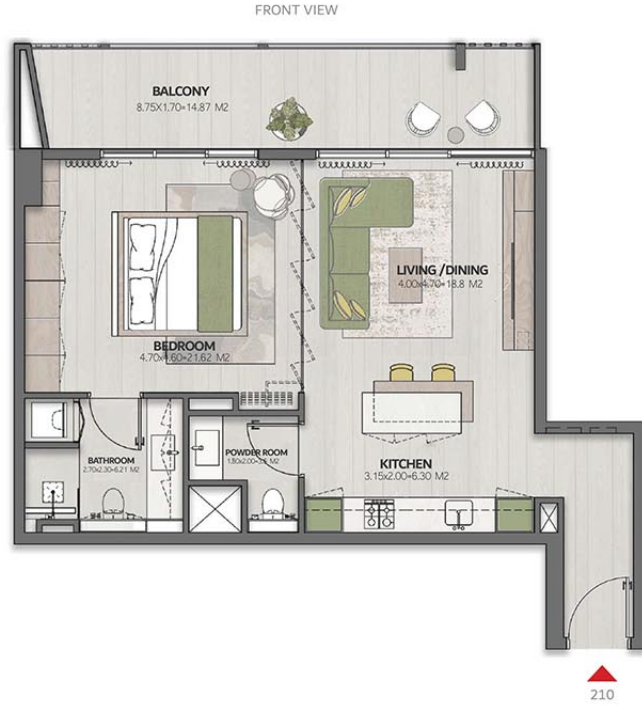
Disclaimer: This document is intended for estimation purposes only. The information contained herein is subject to change and may be modified during the course of construction. The developer reserves the right to make adjustments as necessary without prior notice. Any discrepancies or variations that arise during the construction process will be addressed and resolved in accordance with the project's requirements and best practices.



# THE CUBE RESIDENCES

## 1 BEDROOM -TYPE 2

|            |                        |
|------------|------------------------|
| LEVEL 2    | UNIT 210               |
| SUITE AREA | 689 FT <sup>2</sup>    |
| BALCONY    | 175.3 FT <sup>2</sup>  |
| TOTAL AREA | 864.34 FT <sup>2</sup> |



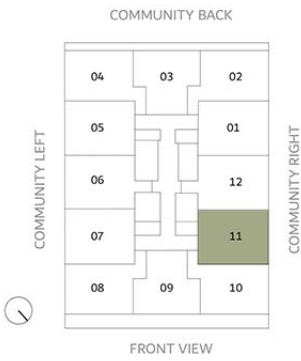
Disclaimer: This document is intended for estimation purposes only. The information contained herein is subject to change and may be modified during the course of construction. The developer reserves the right to make adjustments as necessary without prior notice. Any discrepancies or variations that arise during the construction process will be addressed and resolved in accordance with the project's requirements and best practices.



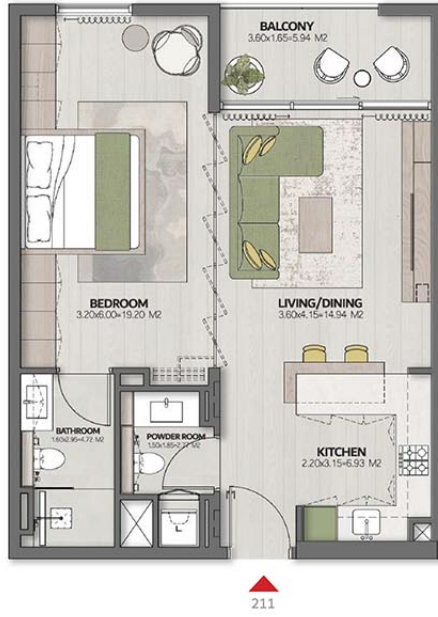
# THE CUBE RESIDENCES

## 1 BEDROOM -TYPE 1

|            |                        |
|------------|------------------------|
| LEVEL 2    | UNIT 211               |
| SUITE AREA | 639.91 FT <sup>2</sup> |
| BALCONY    | 68.24FT <sup>2</sup>   |
| TOTAL AREA | 708.16FT <sup>2</sup>  |



COMMUNITY RIGHT



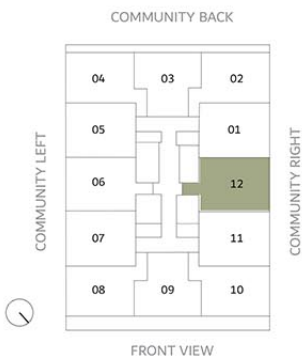
Disclaimer: This document is intended for estimation purposes only. The information contained herein is subject to change and may be modified during the course of construction. The developer reserves the right to make adjustments as necessary without prior notice. Any discrepancies or variations that arise during the construction process will be addressed and resolved in accordance with the project's requirements and best practices.



# THE CUBE RESIDENCES

## 1 BEDROOM -TYPE 1

|            |                        |
|------------|------------------------|
| LEVEL 2    | UNIT 212               |
| SUITE AREA | 681.57 FT <sup>2</sup> |
| BALCONY    | 68.14 FT <sup>2</sup>  |
| TOTAL AREA | 749.71 FT <sup>2</sup> |



COMMUNITY RIGHT



Disclaimer: This document is intended for estimation purposes only. The information contained herein is subject to change and may be modified during the course of construction. The developer reserves the right to make adjustments as necessary without prior notice. Any discrepancies or variations that arise during the construction process will be addressed and resolved in accordance with the project's requirements and best practices.

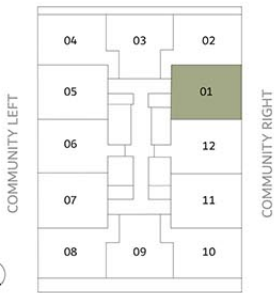


# THE CUBE RESIDENCES

## 1 BEDROOM -TYPE 1

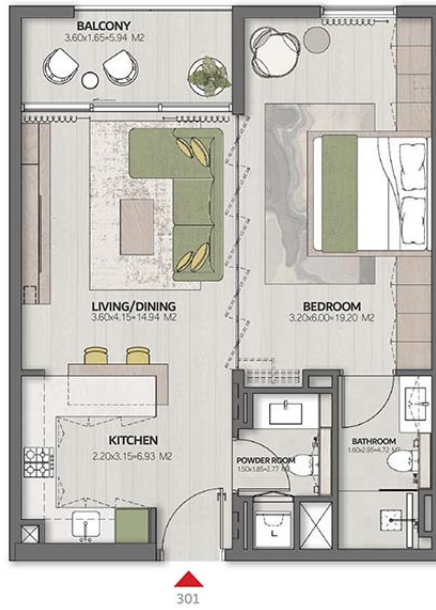
|            |                        |
|------------|------------------------|
| LEVEL 3    | UNIT 301               |
| SUITE AREA | 639.91 FT <sup>2</sup> |
| BALCONY    | 68.24FT <sup>2</sup>   |
| TOTAL AREA | 708.16FT <sup>2</sup>  |

COMMUNITY BACK



FRONT VIEW

COMMUNITY RIGHT



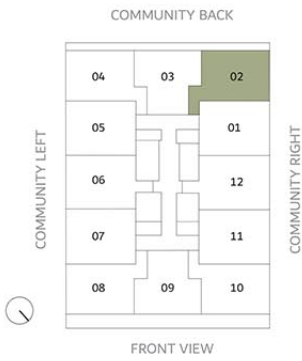
Disclaimer: This document is intended for estimation purposes only. The information contained herein is subject to change and may be modified during the course of construction. The developer reserves the right to make adjustments as necessary without prior notice. Any discrepancies or variations that arise during the construction process will be addressed and resolved in accordance with the project's requirements and best practices.



# THE CUBE RESIDENCES

## 1 BEDROOM -TYPE 2

|            |                        |
|------------|------------------------|
| LEVEL 3    | UNIT 302               |
| SUITE AREA | 689 FT <sup>2</sup>    |
| BALCONY    | 96.01 FT <sup>2</sup>  |
| TOTAL AREA | 785.01 FT <sup>2</sup> |



Disclaimer: This document is intended for estimation purposes only. The information contained herein is subject to change and may be modified during the course of construction. The developer reserves the right to make adjustments as necessary without prior notice. Any discrepancies or variations that arise during the construction process will be addressed and resolved in accordance with the project's requirements and best practices.

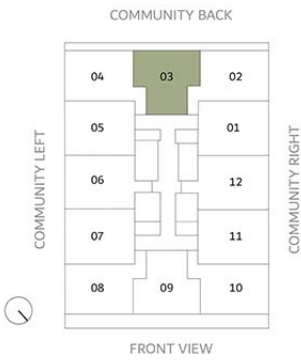


# THE CUBE

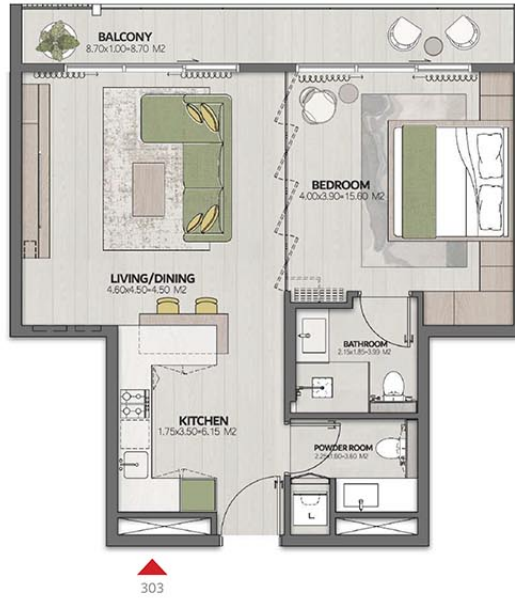
RESIDENCES

## 1 BEDROOM -TYPE 3

|            |                        |
|------------|------------------------|
| LEVEL 3    | UNIT 303               |
| SUITE AREA | 653.37FT <sup>2</sup>  |
| BALCONY    | 98.17 FT <sup>2</sup>  |
| TOTAL AREA | 751.54 FT <sup>2</sup> |



COMMUNITY BACK



Disclaimer: This document is intended for estimation purposes only. The information contained herein is subject to change and may be modified during the course of construction. The developer reserves the right to make adjustments as necessary without prior notice. Any discrepancies or variations that arise during the construction process will be addressed and resolved in accordance with the project's requirements and best practices.

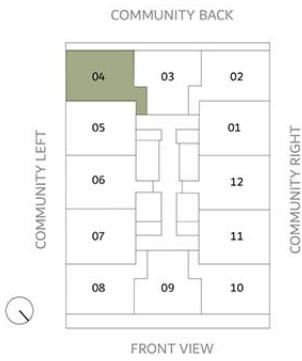
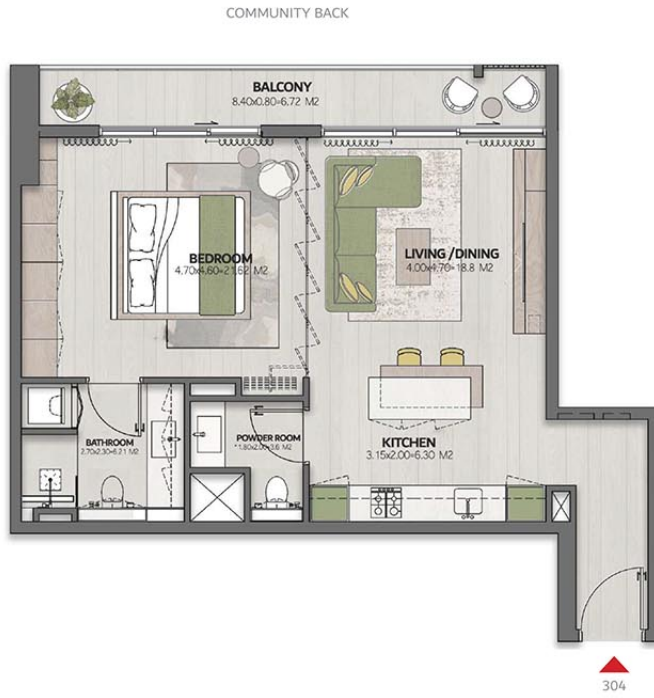


# THE CUBE

RESIDENCES

## 1 BEDROOM -TYPE 2

|            |                        |
|------------|------------------------|
| LEVEL 3    | UNIT 304               |
| SUITE AREA | 689FT <sup>2</sup>     |
| BALCONY    | 96.01 FT <sup>2</sup>  |
| TOTAL AREA | 785.01 FT <sup>2</sup> |



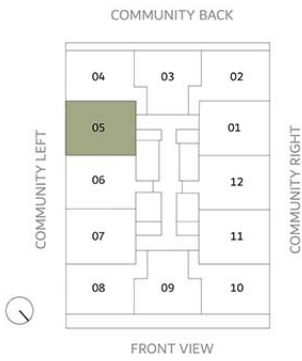
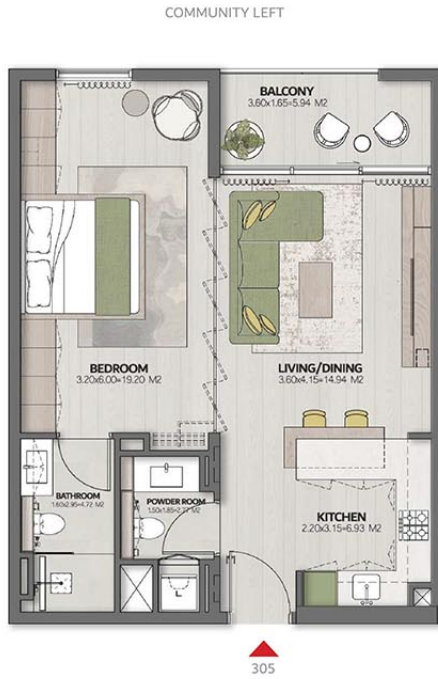
Disclaimer: This document is intended for estimation purposes only. The information contained herein is subject to change and may be modified during the course of construction. The developer reserves the right to make adjustments as necessary without prior notice. Any discrepancies or variations that arise during the construction process will be addressed and resolved in accordance with the project's requirements and best practices.



# THE CUBE RESIDENCES

## 1 BEDROOM -TYPE 1

|            |                        |
|------------|------------------------|
| LEVEL 3    | UNIT 305               |
| SUITE AREA | 639.91 FT <sup>2</sup> |
| BALCONY    | 68.24FT <sup>2</sup>   |
| TOTAL AREA | 708.16FT <sup>2</sup>  |



Disclaimer: This document is intended for estimation purposes only. The information contained herein is subject to change and may be modified during the course of construction. The developer reserves the right to make adjustments as necessary without prior notice. Any discrepancies or variations that arise during the construction process will be addressed and resolved in accordance with the project's requirements and best practices.

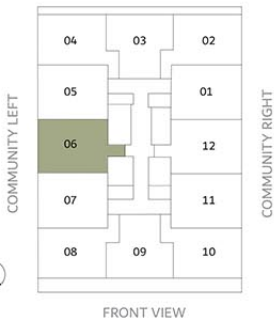


# THE CUBE RESIDENCES

## 1 BEDROOM -TYPE 1

|            |                        |
|------------|------------------------|
| LEVEL 3    | UNIT 306               |
| SUITE AREA | 681.57 FT <sup>2</sup> |
| BALCONY    | 68.14 FT <sup>2</sup>  |
| TOTAL AREA | 749.71 FT <sup>2</sup> |

COMMUNITY BACK



COMMUNITY LEFT



Disclaimer: This document is intended for estimation purposes only. The information contained herein is subject to change and may be modified during the course of construction. The developer reserves the right to make adjustments as necessary without prior notice. Any discrepancies or variations that arise during the construction process will be addressed and resolved in accordance with the project's requirements and best practices.

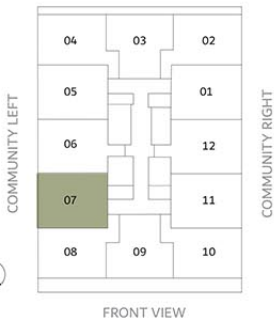


# THE CUBE RESIDENCES

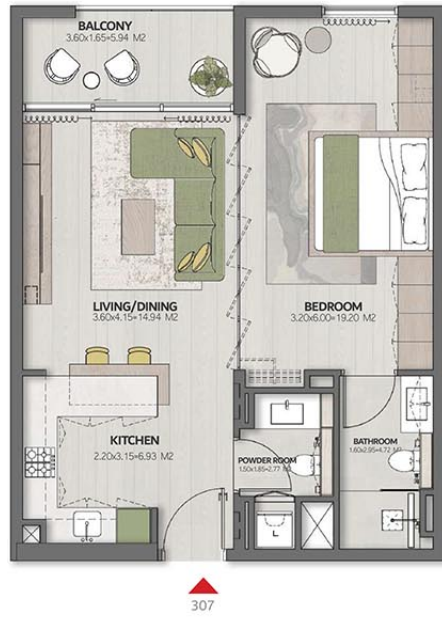
## 1 BEDROOM -TYPE 1

|            |                        |
|------------|------------------------|
| LEVEL 3    | UNIT 307               |
| SUITE AREA | 639.91 FT <sup>2</sup> |
| BALCONY    | 68.24FT <sup>2</sup>   |
| TOTAL AREA | 708.16FT <sup>2</sup>  |

COMMUNITY BACK



COMMUNITY LEFT



307

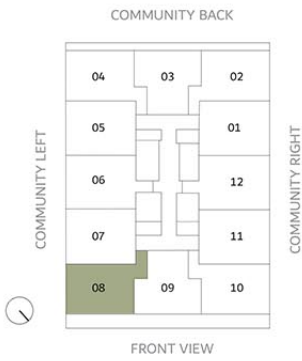
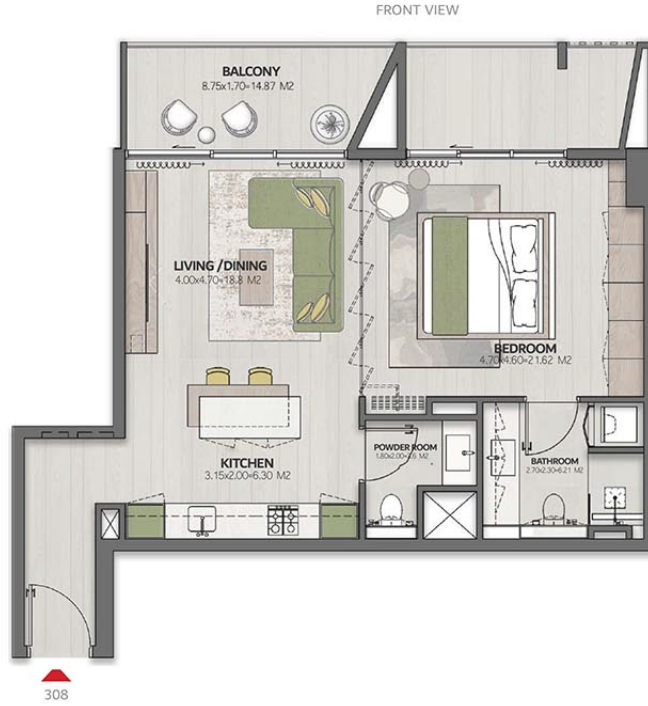
Disclaimer: This document is intended for estimation purposes only. The information contained herein is subject to change and may be modified during the course of construction. The developer reserves the right to make adjustments as necessary without prior notice. Any discrepancies or variations that arise during the construction process will be addressed and resolved in accordance with the project's requirements and best practices.



# THE CUBE RESIDENCES

## 1 BEDROOM -TYPE 2

|            |                        |
|------------|------------------------|
| LEVEL 3    | UNIT 308               |
| SUITE AREA | 689 FT <sup>2</sup>    |
| BALCONY    | 175.3 FT <sup>2</sup>  |
| TOTAL AREA | 864.34 FT <sup>2</sup> |



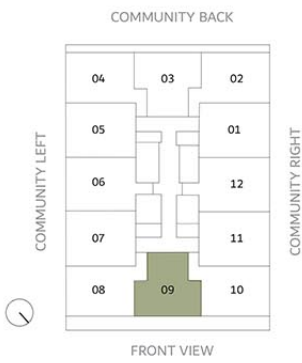
Disclaimer: This document is intended for estimation purposes only. The information contained herein is subject to change and may be modified during the course of construction. The developer reserves the right to make adjustments as necessary without prior notice. Any discrepancies or variations that arise during the construction process will be addressed and resolved in accordance with the project's requirements and best practices.



# THE CUBE RESIDENCES

## 1 BEDROOM -TYPE 3

|            |                        |
|------------|------------------------|
| LEVEL 3    | UNIT 309               |
| SUITE AREA | 653.37FT <sup>2</sup>  |
| BALCONY    | 177.80 FT <sup>2</sup> |
| TOTAL AREA | 831.19FT <sup>2</sup>  |



FRONT VIEW



309

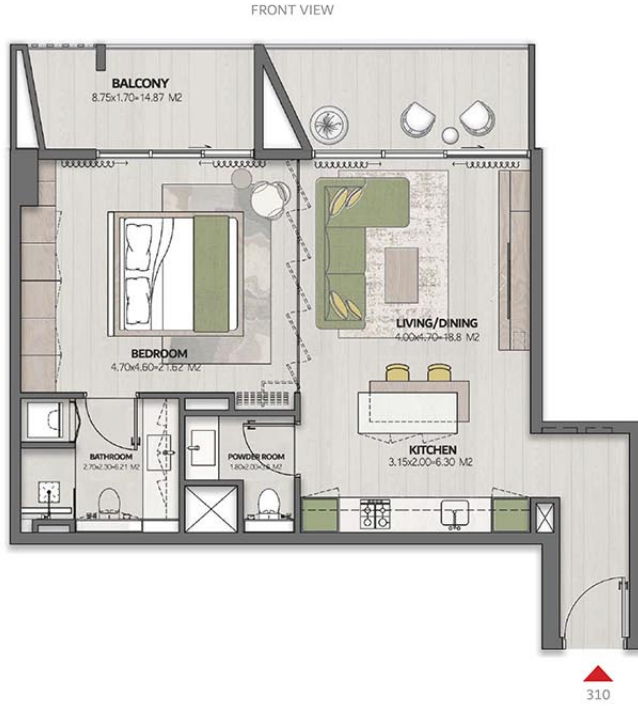
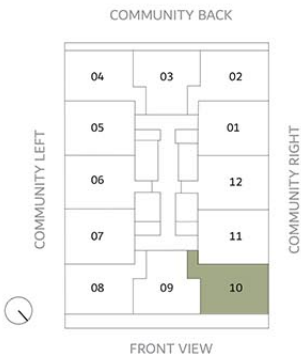
Disclaimer: This document is intended for estimation purposes only. The information contained herein is subject to change and may be modified during the course of construction. The developer reserves the right to make adjustments as necessary without prior notice. Any discrepancies or variations that arise during the construction process will be addressed and resolved in accordance with the project's requirements and best practices.



# THE CUBE RESIDENCES

## 1 BEDROOM -TYPE 2

|            |                        |
|------------|------------------------|
| LEVEL 3    | UNIT 310               |
| SUITE AREA | 689 FT <sup>2</sup>    |
| BALCONY    | 175.3 FT <sup>2</sup>  |
| TOTAL AREA | 864.34 FT <sup>2</sup> |



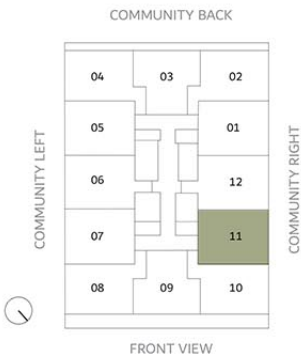
Disclaimer: This document is intended for estimation purposes only. The information contained herein is subject to change and may be modified during the course of construction. The developer reserves the right to make adjustments as necessary without prior notice. Any discrepancies or variations that arise during the construction process will be addressed and resolved in accordance with the project's requirements and best practices.



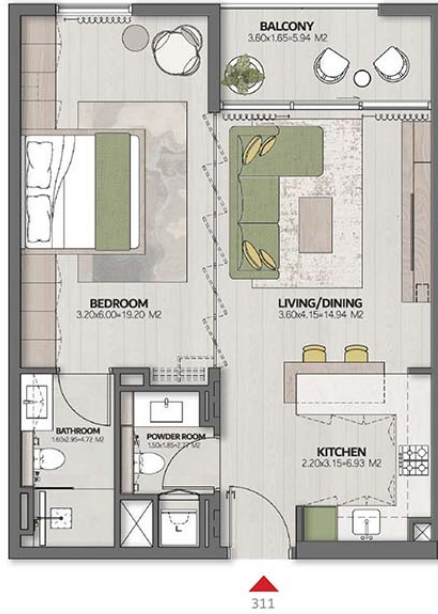
# THE CUBE RESIDENCES

## 1 BEDROOM -TYPE 1

|            |                        |
|------------|------------------------|
| LEVEL 3    | UNIT 311               |
| SUITE AREA | 639.91 FT <sup>2</sup> |
| BALCONY    | 68.24FT <sup>2</sup>   |
| TOTAL AREA | 708.16FT <sup>2</sup>  |



COMMUNITY RIGHT



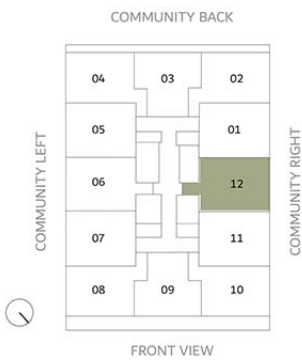
Disclaimer: This document is intended for estimation purposes only. The information contained herein is subject to change and may be modified during the course of construction. The developer reserves the right to make adjustments as necessary without prior notice. Any discrepancies or variations that arise during the construction process will be addressed and resolved in accordance with the project's requirements and best practices.



# THE CUBE RESIDENCES

## 1 BEDROOM -TYPE 1

|            |                        |
|------------|------------------------|
| LEVEL 3    | UNIT 312               |
| SUITE AREA | 681.57 FT <sup>2</sup> |
| BALCONY    | 68.14 FT <sup>2</sup>  |
| TOTAL AREA | 749.71 FT <sup>2</sup> |



Disclaimer: This document is intended for estimation purposes only. The information contained herein is subject to change and may be modified during the course of construction. The developer reserves the right to make adjustments as necessary without prior notice. Any discrepancies or variations that arise during the construction process will be addressed and resolved in accordance with the project's requirements and best practices.

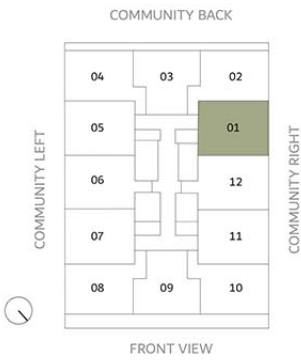




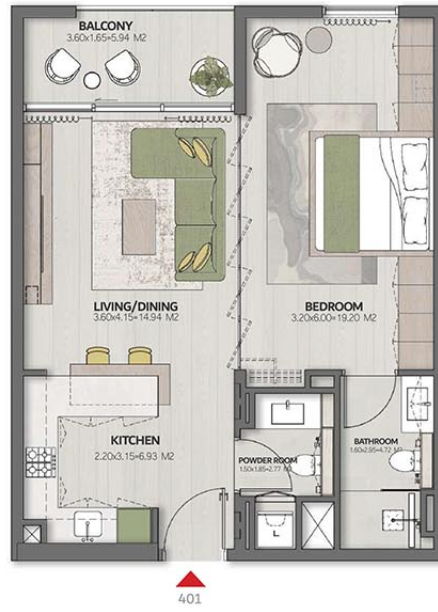
# THE CUBE RESIDENCES

## 1 BEDROOM -TYPE 1

|            |                        |
|------------|------------------------|
| LEVEL 4    | UNIT 401               |
| SUITE AREA | 639.91 FT <sup>2</sup> |
| BALCONY    | 68.24FT <sup>2</sup>   |
| TOTAL AREA | 708.16FT <sup>2</sup>  |



COMMUNITY RIGHT



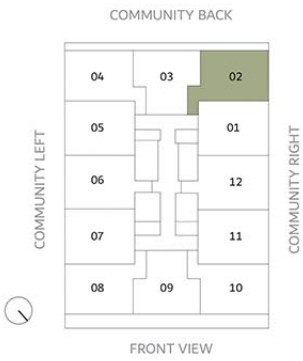
Disclaimer: This document is intended for estimation purposes only. The information contained herein is subject to change and may be modified during the course of construction. The developer reserves the right to make adjustments as necessary without prior notice. Any discrepancies or variations that arise during the construction process will be addressed and resolved in accordance with the project's requirements and best practices.



# THE CUBE RESIDENCES

## 1 BEDROOM -TYPE 2

|            |                        |
|------------|------------------------|
| LEVEL 4    | UNIT 402               |
| SUITE AREA | 689 FT <sup>2</sup>    |
| BALCONY    | 96.01 FT <sup>2</sup>  |
| TOTAL AREA | 785.01 FT <sup>2</sup> |



Disclaimer: This document is intended for estimation purposes only. The information contained herein is subject to change and may be modified during the course of construction. The developer reserves the right to make adjustments as necessary without prior notice. Any discrepancies or variations that arise during the construction process will be addressed and resolved in accordance with the project's requirements and best practices.

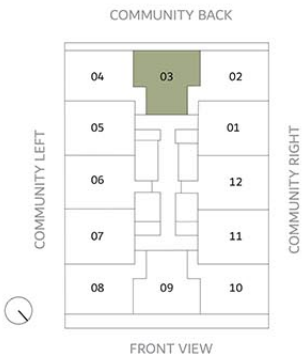
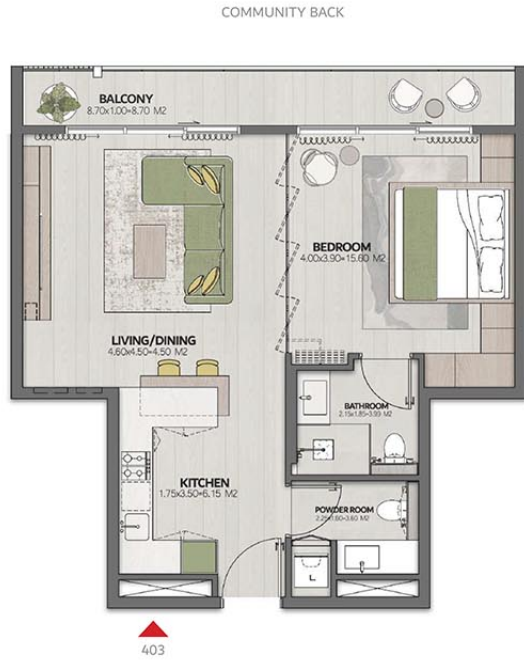


# THE CUBE

RESIDENCES

## 1 BEDROOM -TYPE 3

|            |                        |
|------------|------------------------|
| LEVEL 4    | UNIT 403               |
| SUITE AREA | 653.37FT <sup>2</sup>  |
| BALCONY    | 98.17 FT <sup>2</sup>  |
| TOTAL AREA | 751.54 FT <sup>2</sup> |



Disclaimer: This document is intended for estimation purposes only. The information contained herein is subject to change and may be modified during the course of construction. The developer reserves the right to make adjustments as necessary without prior notice. Any discrepancies or variations that arise during the construction process will be addressed and resolved in accordance with the project's requirements and best practices.

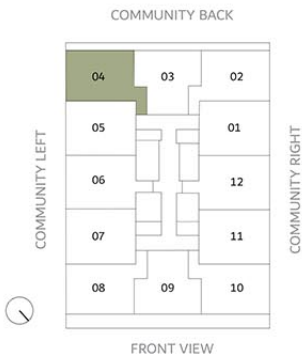
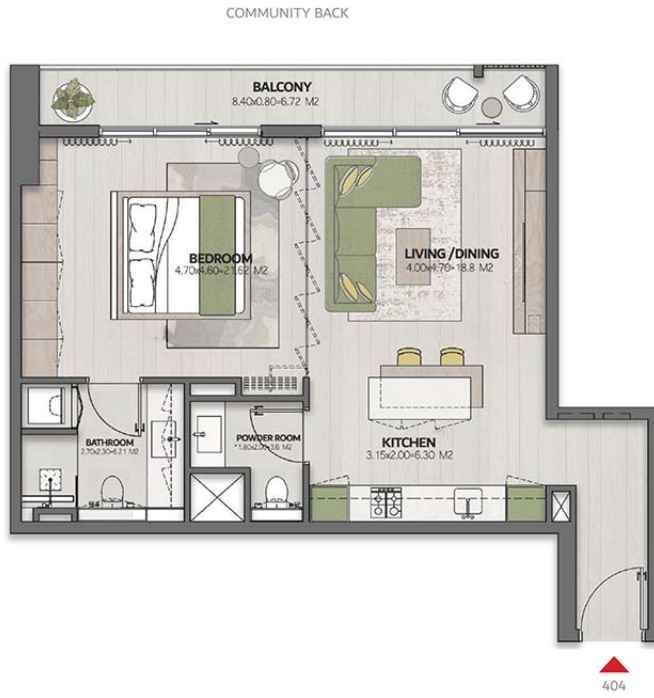




# THE CUBE RESIDENCES

## 1 BEDROOM -TYPE 2

|            |                        |
|------------|------------------------|
| LEVEL 4    | UNIT 404               |
| SUITE AREA | 689FT <sup>2</sup>     |
| BALCONY    | 96.01 FT <sup>2</sup>  |
| TOTAL AREA | 785.01 FT <sup>2</sup> |



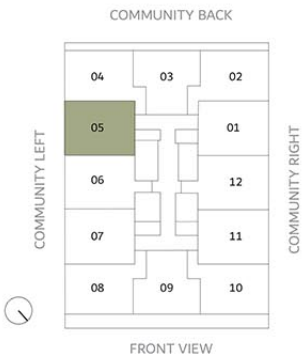
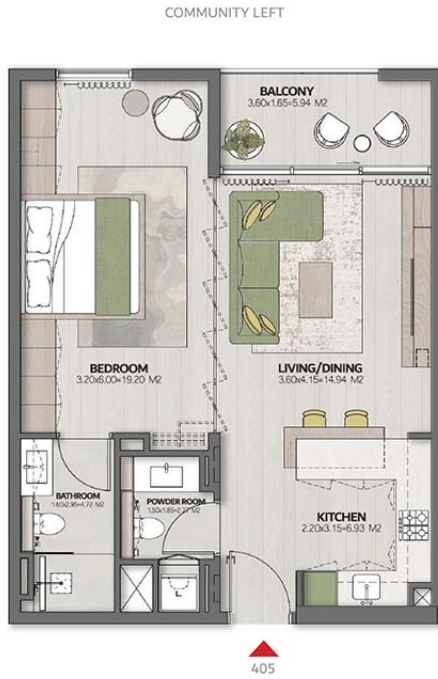
Disclaimer: This document is intended for estimation purposes only. The information contained herein is subject to change and may be modified during the course of construction. The developer reserves the right to make adjustments as necessary without prior notice. Any discrepancies or variations that arise during the construction process will be addressed and resolved in accordance with the project's requirements and best practices.



# THE CUBE RESIDENCES

## 1 BEDROOM -TYPE 1

|            |                        |
|------------|------------------------|
| LEVEL 4    | UNIT 405               |
| SUITE AREA | 639.91 FT <sup>2</sup> |
| BALCONY    | 68.24FT <sup>2</sup>   |
| TOTAL AREA | 708.16FT <sup>2</sup>  |



Disclaimer: This document is intended for estimation purposes only. The information contained herein is subject to change and may be modified during the course of construction. The developer reserves the right to make adjustments as necessary without prior notice. Any discrepancies or variations that arise during the construction process will be addressed and resolved in accordance with the project's requirements and best practices.

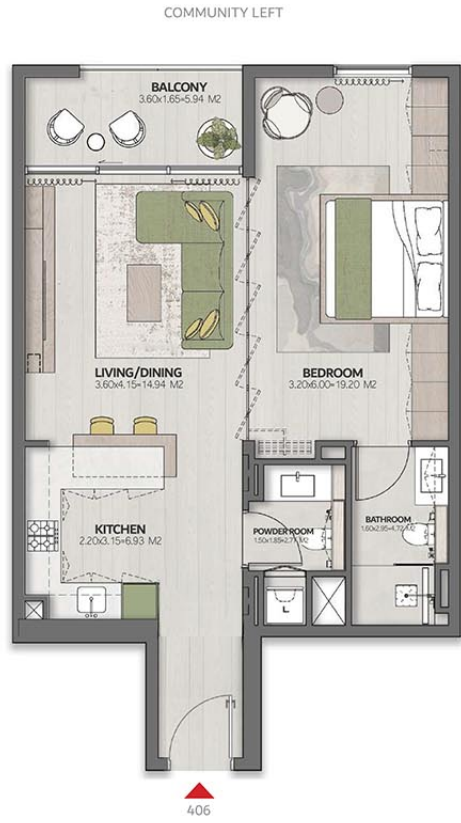
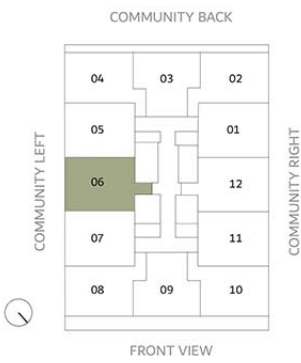




# THE CUBE RESIDENCES

## 1 BEDROOM -TYPE 1

|            |                        |
|------------|------------------------|
| LEVEL 4    | UNIT 406               |
| SUITE AREA | 681.57 FT <sup>2</sup> |
| BALCONY    | 68.14 FT <sup>2</sup>  |
| TOTAL AREA | 749.71 FT <sup>2</sup> |



Disclaimer: This document is intended for estimation purposes only. The information contained herein is subject to change and may be modified during the course of construction. The developer reserves the right to make adjustments as necessary without prior notice. Any discrepancies or variations that arise during the construction process will be addressed and resolved in accordance with the project's requirements and best practices.

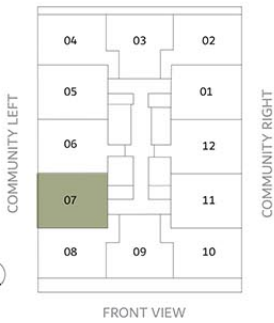


# THE CUBE RESIDENCES

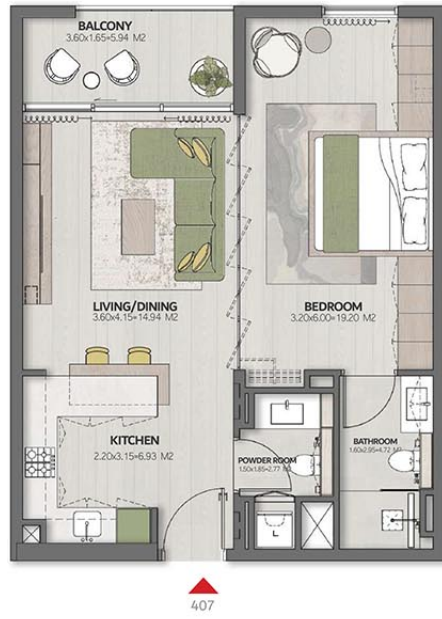
## 1 BEDROOM -TYPE 1

|            |                        |
|------------|------------------------|
| LEVEL 4    | UNIT 407               |
| SUITE AREA | 639.91 FT <sup>2</sup> |
| BALCONY    | 68.24FT <sup>2</sup>   |
| TOTAL AREA | 708.16FT <sup>2</sup>  |

COMMUNITY BACK



COMMUNITY LEFT



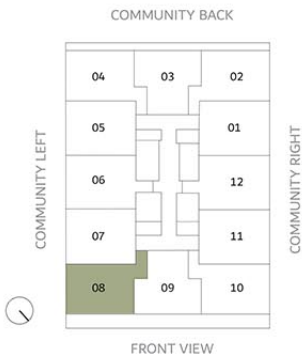
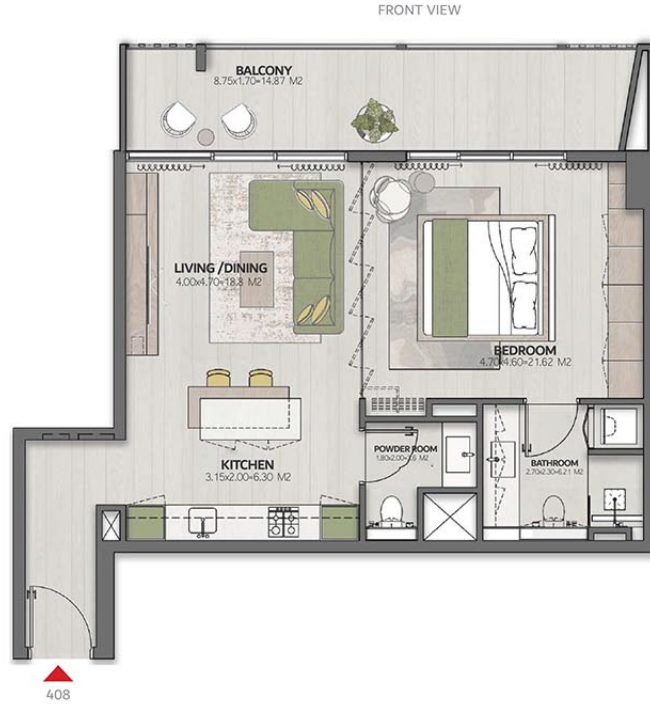
Disclaimer: This document is intended for estimation purposes only. The information contained herein is subject to change and may be modified during the course of construction. The developer reserves the right to make adjustments as necessary without prior notice. Any discrepancies or variations that arise during the construction process will be addressed and resolved in accordance with the project's requirements and best practices.



# THE CUBE RESIDENCES

## 1 BEDROOM -TYPE 2

|            |                        |
|------------|------------------------|
| LEVEL 4    | UNIT 408               |
| SUITE AREA | 689 FT <sup>2</sup>    |
| BALCONY    | 175.3 FT <sup>2</sup>  |
| TOTAL AREA | 864.34 FT <sup>2</sup> |



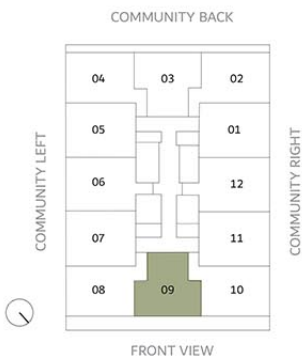
Disclaimer: This document is intended for estimation purposes only. The information contained herein is subject to change and may be modified during the course of construction. The developer reserves the right to make adjustments as necessary without prior notice. Any discrepancies or variations that arise during the construction process will be addressed and resolved in accordance with the project's requirements and best practices.



# THE CUBE RESIDENCES

## 1 BEDROOM -TYPE 3

|            |                        |
|------------|------------------------|
| LEVEL 4    | UNIT 409               |
| SUITE AREA | 653.37FT <sup>2</sup>  |
| BALCONY    | 177.80 FT <sup>2</sup> |
| TOTAL AREA | 831.19FT <sup>2</sup>  |



FRONT VIEW



409

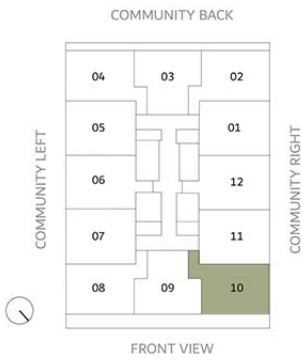
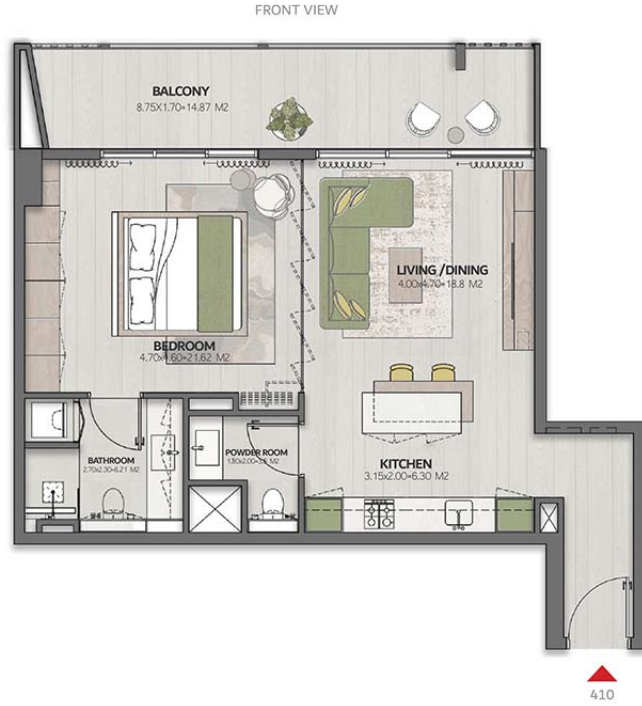
Disclaimer: This document is intended for estimation purposes only. The information contained herein is subject to change and may be modified during the course of construction. The developer reserves the right to make adjustments as necessary without prior notice. Any discrepancies or variations that arise during the construction process will be addressed and resolved in accordance with the project's requirements and best practices.



# THE CUBE RESIDENCES

## 1 BEDROOM -TYPE 2

|            |                        |
|------------|------------------------|
| LEVEL 4    | UNIT 410               |
| SUITE AREA | 689 FT <sup>2</sup>    |
| BALCONY    | 175.3 FT <sup>2</sup>  |
| TOTAL AREA | 864.34 FT <sup>2</sup> |



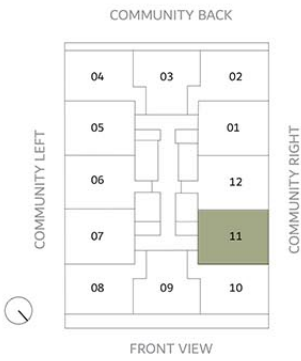
Disclaimer: This document is intended for estimation purposes only. The information contained herein is subject to change and may be modified during the course of construction. The developer reserves the right to make adjustments as necessary without prior notice. Any discrepancies or variations that arise during the construction process will be addressed and resolved in accordance with the project's requirements and best practices.



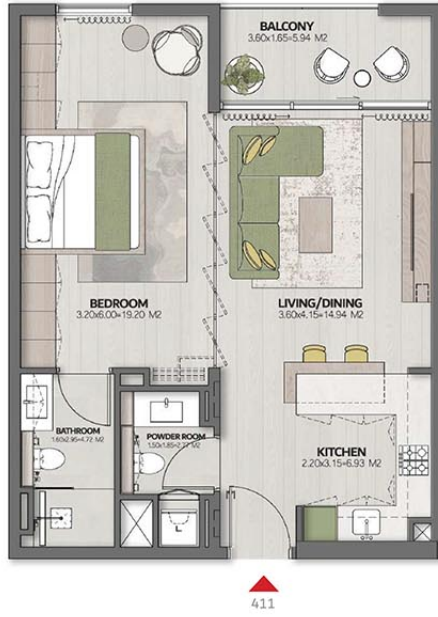
# THE CUBE RESIDENCES

## 1 BEDROOM -TYPE 1

|            |                        |
|------------|------------------------|
| LEVEL 4    | UNIT 411               |
| SUITE AREA | 639.91 FT <sup>2</sup> |
| BALCONY    | 68.24FT <sup>2</sup>   |
| TOTAL AREA | 708.16FT <sup>2</sup>  |



COMMUNITY RIGHT



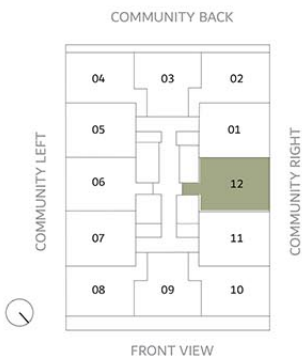
Disclaimer: This document is intended for estimation purposes only. The information contained herein is subject to change and may be modified during the course of construction. The developer reserves the right to make adjustments as necessary without prior notice. Any discrepancies or variations that arise during the construction process will be addressed and resolved in accordance with the project's requirements and best practices.



# THE CUBE RESIDENCES

## 1 BEDROOM -TYPE 1

|            |                        |
|------------|------------------------|
| LEVEL 4    | UNIT 412               |
| SUITE AREA | 681.57 FT <sup>2</sup> |
| BALCONY    | 68.14 FT <sup>2</sup>  |
| TOTAL AREA | 749.71 FT <sup>2</sup> |



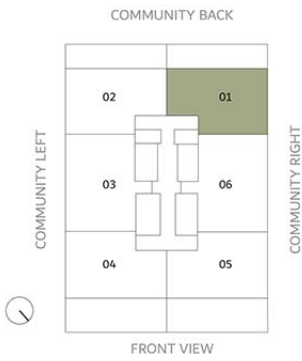
Disclaimer: This document is intended for estimation purposes only. The information contained herein is subject to change and may be modified during the course of construction. The developer reserves the right to make adjustments as necessary without prior notice. Any discrepancies or variations that arise during the construction process will be addressed and resolved in accordance with the project's requirements and best practices.



# THE CUBE RESIDENCES

## 2 BEDROOM -TYPE 1

|            |                        |
|------------|------------------------|
| LEVEL 5    | UNIT 501               |
| SUITE AREA | 1126.8 FT <sup>2</sup> |
| BALCONY    | 451.1FT <sup>2</sup>   |
| TOTAL AREA | 1577.9FT <sup>2</sup>  |



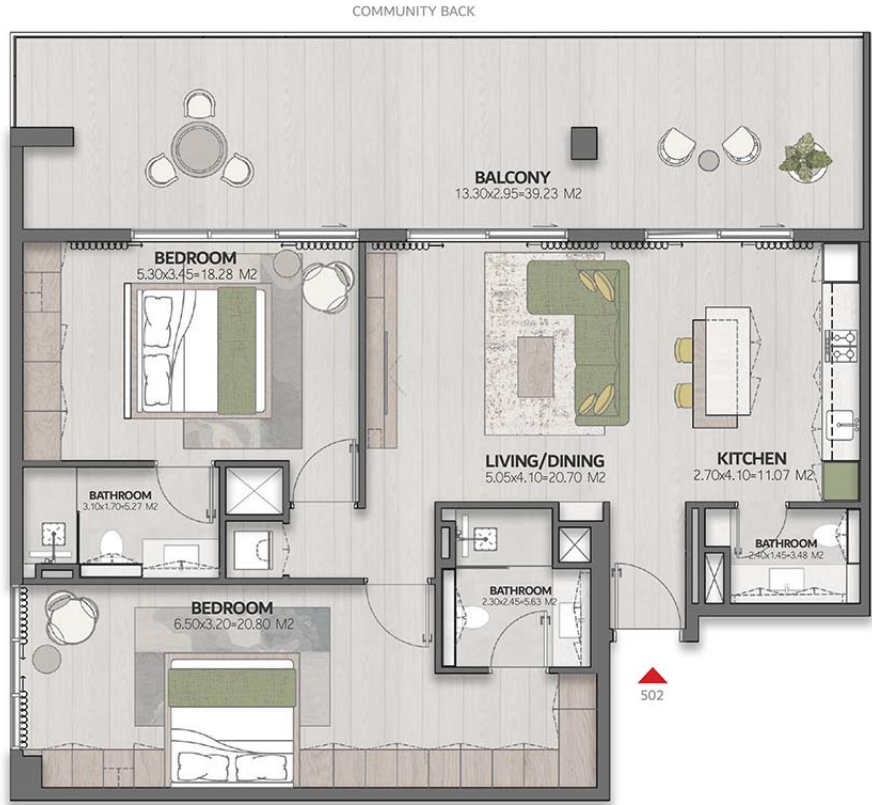
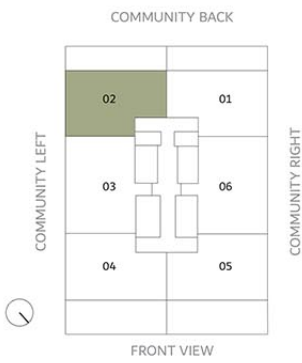
Disclaimer: This document is intended for estimation purposes only. The information contained herein is subject to change and may be modified during the course of construction. The developer reserves the right to make adjustments as necessary without prior notice. Any discrepancies or variations that arise during the construction process will be addressed and resolved in accordance with the project's requirements and best practices.



# THE CUBE RESIDENCES

## 2 BEDROOM -TYPE 1

|            |                        |
|------------|------------------------|
| LEVEL 5    | UNIT 502               |
| SUITE AREA | 1126.8 FT <sup>2</sup> |
| BALCONY    | 451.1FT <sup>2</sup>   |
| TOTAL AREA | 1577.9FT <sup>2</sup>  |



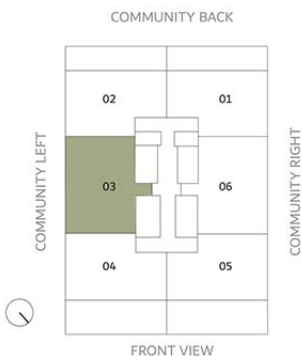
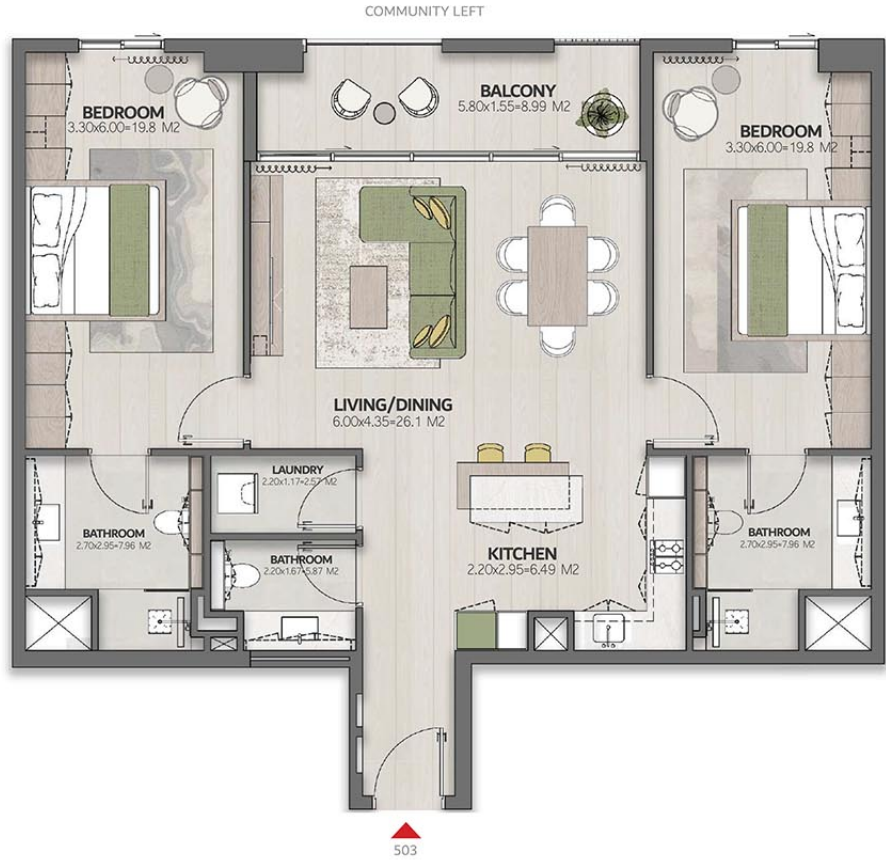
Disclaimer: This document is intended for estimation purposes only. The information contained herein is subject to change and may be modified during the course of construction. The developer reserves the right to make adjustments as necessary without prior notice. Any discrepancies or variations that arise during the construction process will be addressed and resolved in accordance with the project's requirements and best practices.



# THE CUBE RESIDENCES

## 2 BEDROOM -TYPE 2

|            |                        |
|------------|------------------------|
| LEVEL 5    | UNIT 503               |
| SUITE AREA | 1208.9 FT <sup>2</sup> |
| BALCONY    | 106.6 FT <sup>2</sup>  |
| TOTAL AREA | 1315.5 FT <sup>2</sup> |



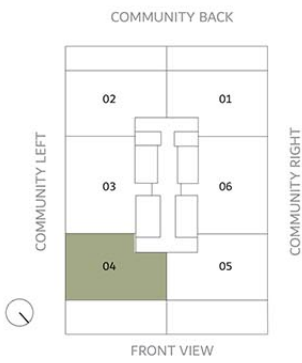
Disclaimer: This document is intended for estimation purposes only. The information contained herein is subject to change and may be modified during the course of construction. The developer reserves the right to make adjustments as necessary without prior notice. Any discrepancies or variations that arise during the construction process will be addressed and resolved in accordance with the project's requirements and best practices.



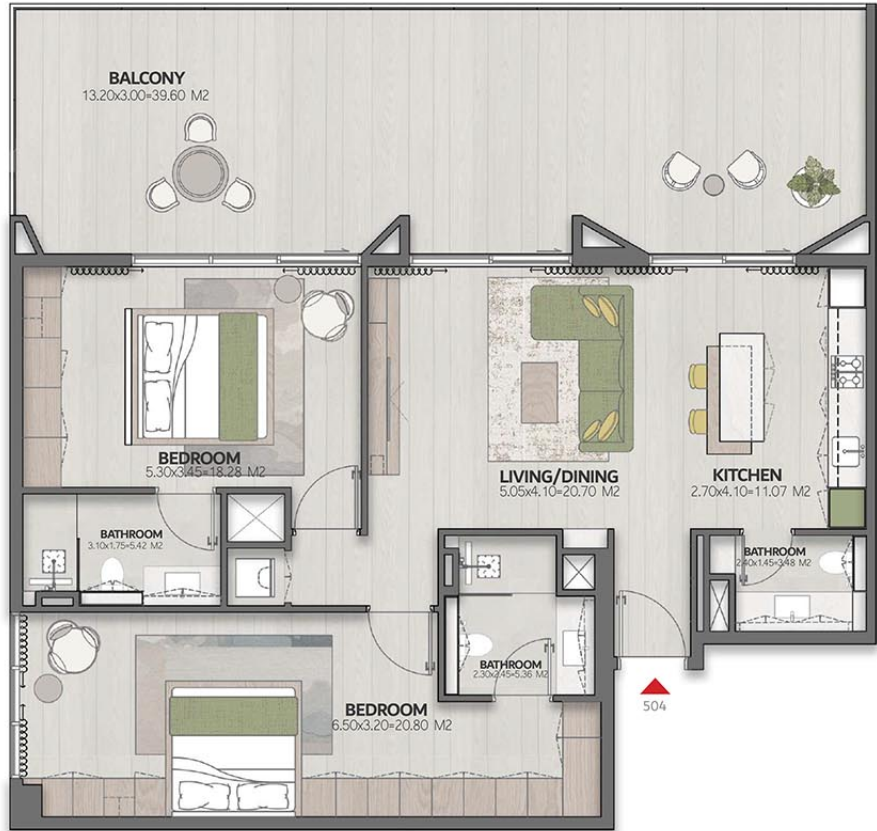
# THE CUBE RESIDENCES

## 2 BEDROOM -TYPE 1

|            |                        |
|------------|------------------------|
| LEVEL 5    | UNIT 504               |
| SUITE AREA | 1126.8 FT <sup>2</sup> |
| BALCONY    | 568.2 FT <sup>2</sup>  |
| TOTAL AREA | 1695 FT <sup>2</sup>   |



FRONT VIEW



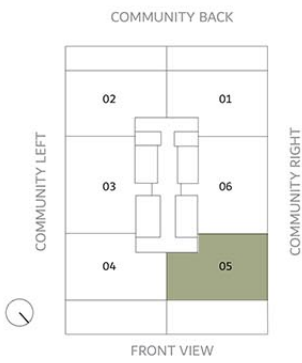
Disclaimer: This document is intended for estimation purposes only. The information contained herein is subject to change and may be modified during the course of construction. The developer reserves the right to make adjustments as necessary without prior notice. Any discrepancies or variations that arise during the construction process will be addressed and resolved in accordance with the project's requirements and best practices.



# THE CUBE RESIDENCES

## 2 BEDROOM -TYPE 1

|            |                        |
|------------|------------------------|
| LEVEL 5    | UNIT 505               |
| SUITE AREA | 1126.8 FT <sup>2</sup> |
| BALCONY    | 568.2 FT <sup>2</sup>  |
| TOTAL AREA | 1695 FT <sup>2</sup>   |



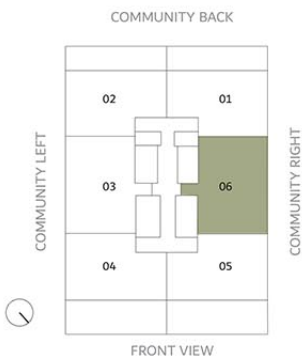
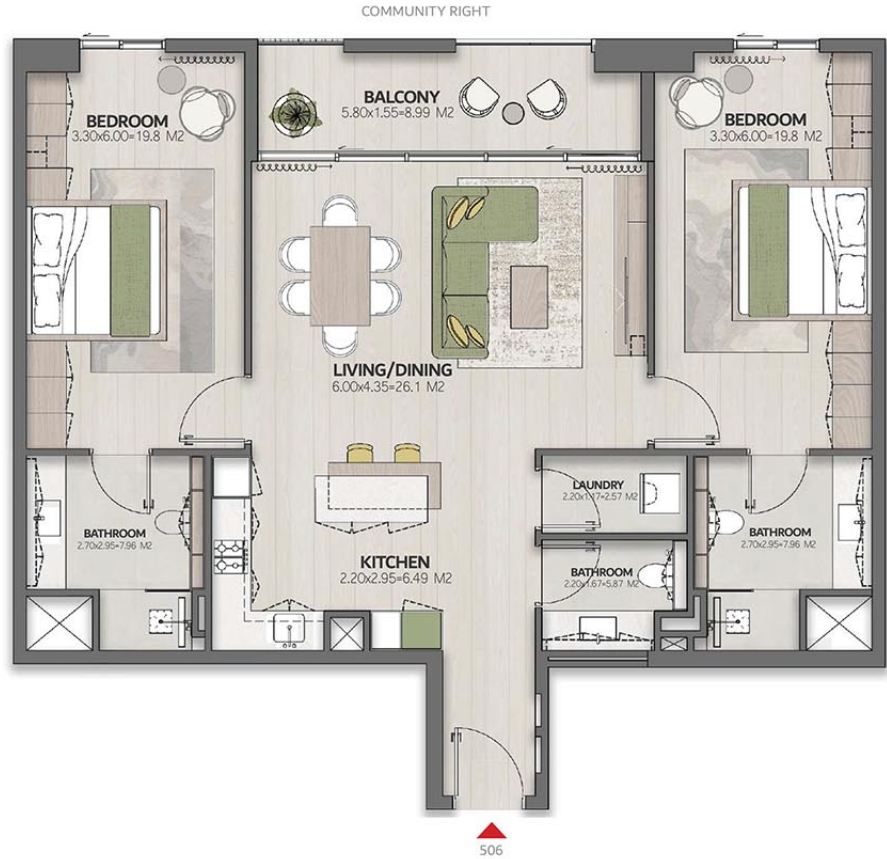
Disclaimer: This document is intended for estimation purposes only. The information contained herein is subject to change and may be modified during the course of construction. The developer reserves the right to make adjustments as necessary without prior notice. Any discrepancies or variations that arise during the construction process will be addressed and resolved in accordance with the project's requirements and best practices.



# THE CUBE RESIDENCES

## 2 BEDROOM -TYPE 2

|            |                        |
|------------|------------------------|
| LEVEL 5    | UNIT 506               |
| SUITE AREA | 1210.5 FT <sup>2</sup> |
| BALCONY    | 106.6 FT <sup>2</sup>  |
| TOTAL AREA | 1317.1 FT <sup>2</sup> |



Disclaimer: This document is intended for estimation purposes only. The information contained herein is subject to change and may be modified during the course of construction. The developer reserves the right to make adjustments as necessary without prior notice. Any discrepancies or variations that arise during the construction process will be addressed and resolved in accordance with the project's requirements and best practices.

AMWAJ  
DEVELOPMENT

# CONTACT US



Call Us [+971 4 248 3400](tel:+97142483400)



WhatsApp [+971 55 162 3236](https://wa.me/971551623236)

TANAMI  
PROPERTIES